

# PCS 1900 RF Interference Potential Test Report

## Hardware Setup

Probe | Calibration Date EF3DV3 - SN4028 | September 04, 2023  
DAE | Calibration Date DAE4 Sn1546 | March 11, 2024  
Software Version 1.2.0.1713

## Communication Systems

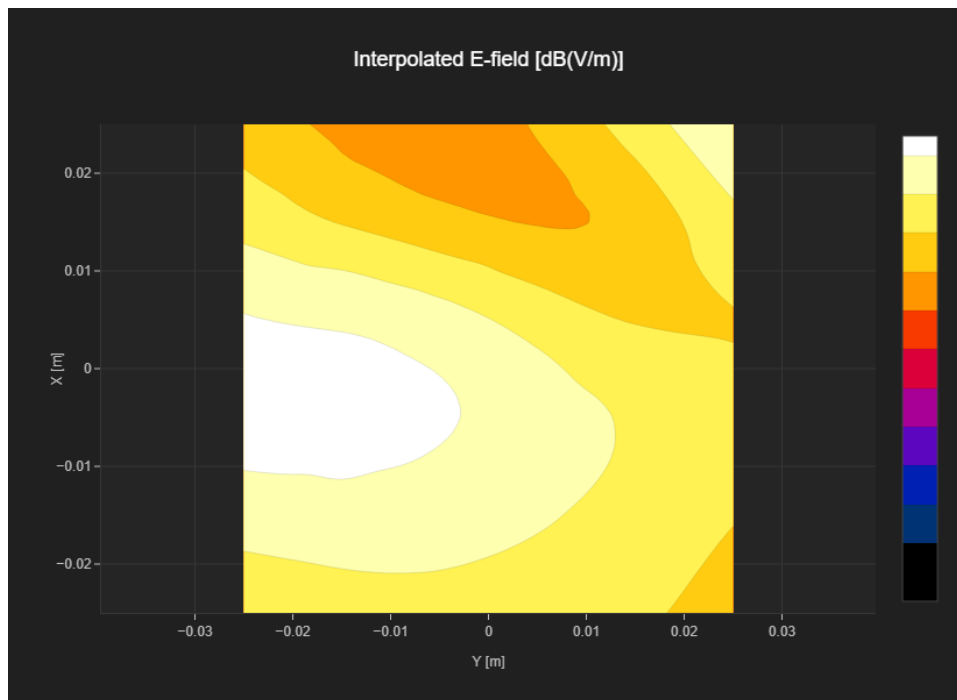
MIF 3.8  
Channel | Frequency [MHz] 512 | 1850.2  
Communication Systems' Name GPRS-FDD (TDMA, GMSK, TN 0)

## Grid Settings

Extent X [mm]	50.0	Step X [mm]	10.0
Extent Y [mm]	50.0	Step Y [mm]	10.0
Distance [mm]	15.0		

## Results

E <sub>max</sub> [dBV/m]	<b>24.37</b>	E <sub>avg 50x50 Max</sub> [dBV/m]	<b>21.47</b>
Drift [dB]	<b>0.34</b>	RFail [dBV/m]	<b>25.27</b>



# PCS 1900 RF Interference Potential Test Report

## Hardware Setup

Probe | Calibration Date EF3DV3 - SN4028 | September 04, 2023  
 DAE | Calibration Date DAE4 Sn1546 | March 11, 2024  
 Software Version 1.2.0.1713

## Communication Systems

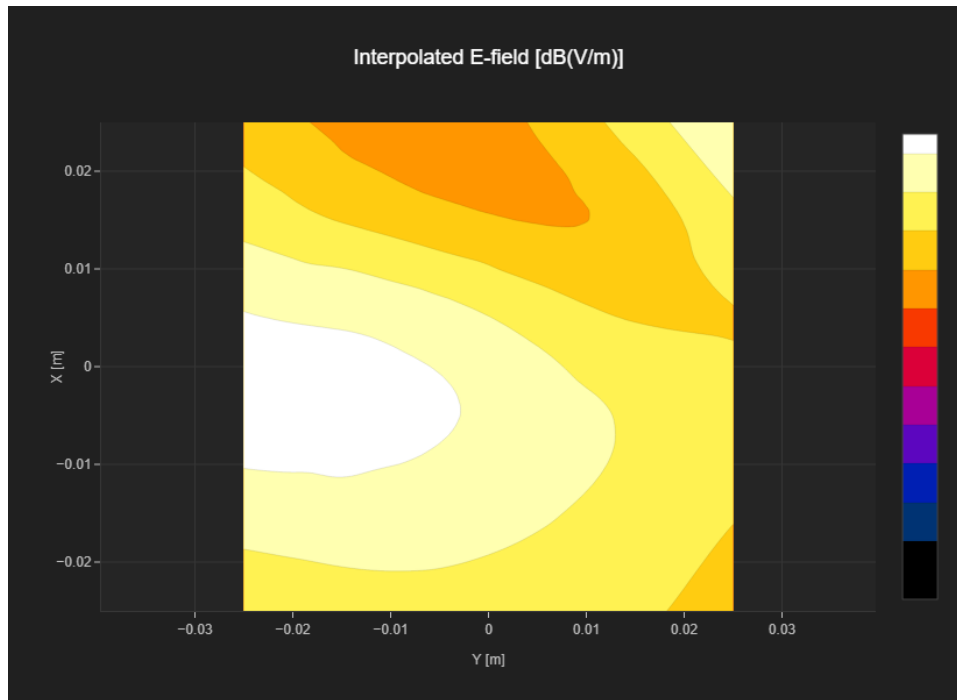
MIF 3.8  
 Channel | Frequency [MHz] 661 | 1880.0  
 Communication Systems' Name GPRS-FDD (TDMA, GMSK, TN 0)

## Grid Settings

Extent X [mm]	50.0	Step X [mm]	10.0
Extent Y [mm]	50.0	Step Y [mm]	10.0
Distance [mm]	15.0		

## Results

E <sub>max</sub> [dBV/m]	<b>23.32</b>	E <sub>avg 50x50 Max</sub> [dBV/m]	<b>20.44</b>
Drift [dB]	<b>-0.04</b>	RFail [dBV/m]	<b>24.24</b>



# PCS 1900 RF Interference Potential Test Report

## Hardware Setup

Probe | Calibration Date EF3DV3 - SN4028 | September 04, 2023  
 DAE | Calibration Date DAE4 Sn1546 | March 11, 2024  
 Software Version 1.2.0.1713

## Communication Systems

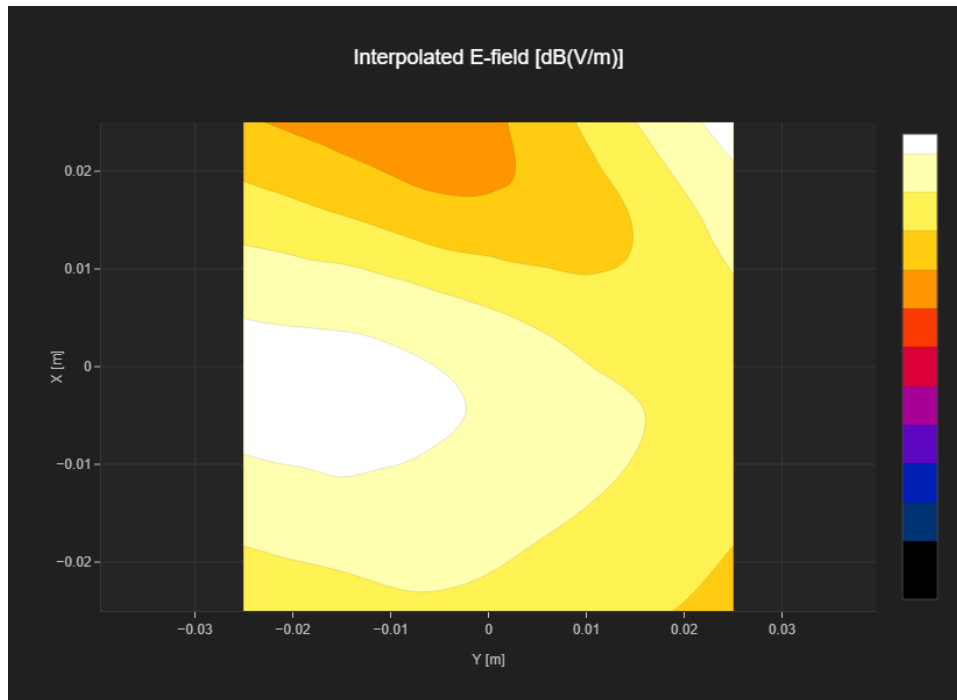
MIF 3.8  
 Channel | Frequency [MHz] 810 | 1909.8  
 Communication Systems' Name GPRS-FDD (TDMA, GMSK, TN 0)

## Grid Settings

Extent X [mm]	50.0	Step X [mm]	10.0
Extent Y [mm]	50.0	Step Y [mm]	10.0
Distance [mm]	15.0		

## Results

E <sub>max</sub> [dBV/m]	<b>23.53</b>	E <sub>avg 50x50 Max</sub> [dBV/m]	<b>20.96</b>
Drift [dB]	<b>0.16</b>	RFail [dBV/m]	<b>24.76</b>



# PCS 1900 RF Interference Potential Test Report

## Hardware Setup

Probe | Calibration Date EF3DV3 - SN4028 | September 04, 2023  
 DAE | Calibration Date DAE4 Sn1546 | March 11, 2024  
 Software Version 1.2.0.1713

## Communication Systems

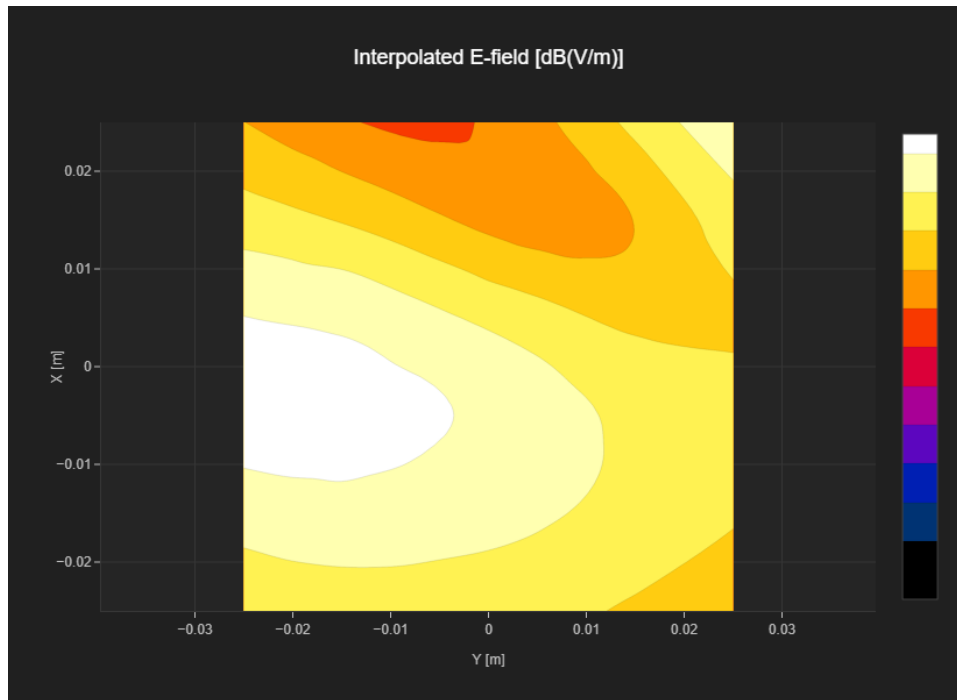
MIF 1.15  
 Channel | Frequency [MHz] 512 | 1850.2  
 Communication Systems' Name GPRS-FDD (TDMA, GMSK, TN 0-1)

## Grid Settings

Extent X [mm]	50.0	Step X [mm]	10.0
Extent Y [mm]	50.0	Step Y [mm]	10.0
Distance [mm]	15.0		

## Results

E <sub>max</sub> [dBV/m]	<b>25.74</b>	E <sub>avg 50x50 Max</sub> [dBV/m]	<b>22.66</b>
Drift [dB]	<b>0.01</b>	RFail [dBV/m]	<b>23.81</b>



# PCS 1900 RF Interference Potential Test Report

## Hardware Setup

Probe | Calibration Date EF3DV3 - SN4028 | September 04, 2023  
 DAE | Calibration Date DAE4 Sn1546 | March 11, 2024  
 Software Version 1.2.0.1713

## Communication Systems

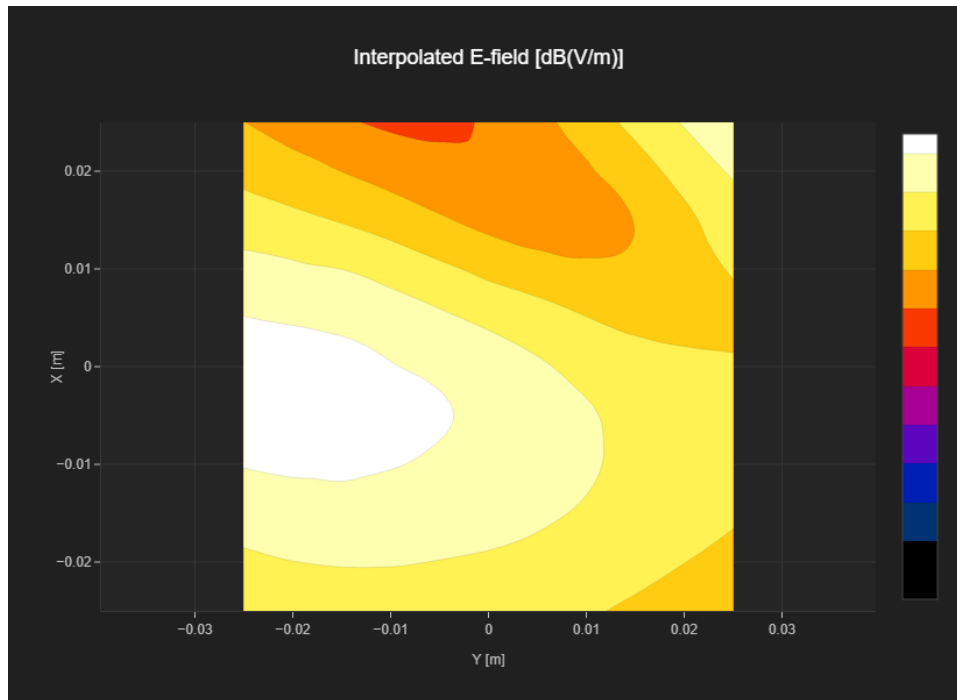
MIF 1.15  
 Channel | Frequency [MHz] 661 | 1880.0  
 Communication Systems' Name GPRS-FDD (TDMA, GMSK, TN 0-1)

## Grid Settings

Extent X [mm]	50.0	Step X [mm]	10.0
Extent Y [mm]	50.0	Step Y [mm]	10.0
Distance [mm]	15.0		

## Results

E <sub>max</sub> [dBV/m]	<b>25.6</b>	E <sub>avg 50x50 Max</sub> [dBV/m]	<b>22.56</b>
Drift [dB]	<b>0.09</b>	RFail [dBV/m]	<b>23.71</b>



# PCS 1900 RF Interference Potential Test Report

## Hardware Setup

Probe | Calibration Date EF3DV3 - SN4028 | September 04, 2023  
 DAE | Calibration Date DAE4 Sn1546 | March 11, 2024  
 Software Version 1.2.0.1713

## Communication Systems

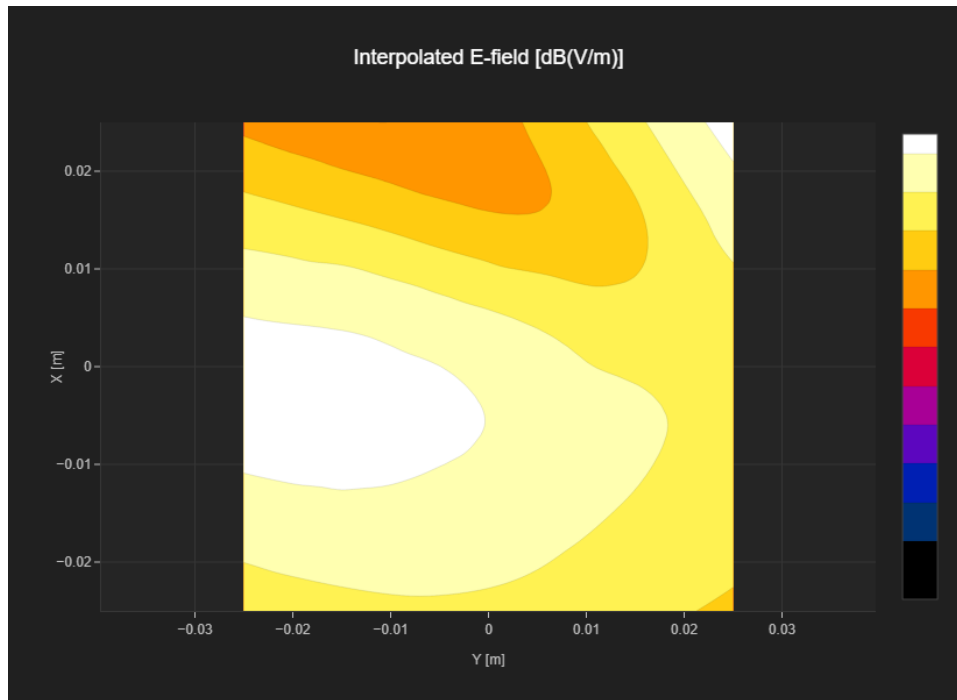
MIF 1.15  
 Channel | Frequency [MHz] 810 | 1909.8  
 Communication Systems' Name GPRS-FDD (TDMA, GMSK, TN 0-1)

## Grid Settings

Extent X [mm]	50.0	Step X [mm]	10.0
Extent Y [mm]	50.0	Step Y [mm]	10.0
Distance [mm]	15.0		

## Results

E <sub>max</sub> [dBV/m]	<b>25.18</b>	E <sub>avg 50x50 Max</sub> [dBV/m]	<b>22.6</b>
Drift [dB]	<b>-0.03</b>	RFail [dBV/m]	<b>23.75</b>



# PCS 1900 RF Interference Potential Test Report

## Hardware Setup

Probe | Calibration Date EF3DV3 - SN4028 | September 04, 2023  
 DAE | Calibration Date DAE4 Sn1546 | March 11, 2024  
 Software Version 1.2.0.1713

## Communication Systems

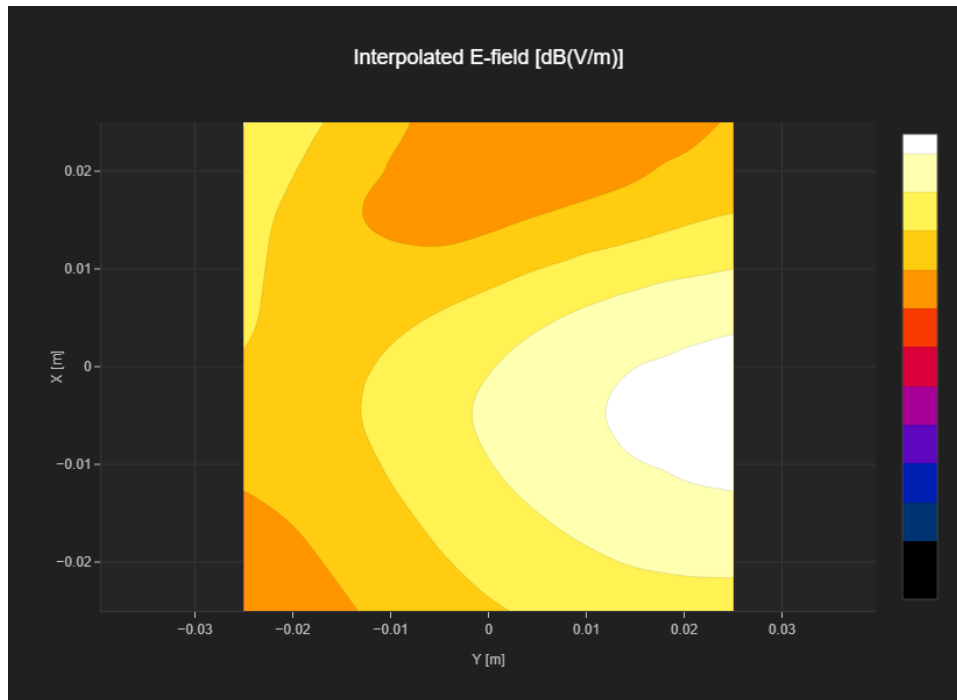
MIF 3.8  
 Channel | Frequency [MHz] 512 | 1850.2  
 Communication Systems' Name GPRS-FDD (TDMA, GMSK, TN 0)

## Grid Settings

Extent X [mm]	50.0	Step X [mm]	10.0
Extent Y [mm]	50.0	Step Y [mm]	10.0
Distance [mm]	15.0		

## Results

E <sub>max</sub> [dBV/m]	<b>24.62</b>	E <sub>avg 50x50 Max</sub> [dBV/m]	<b>21.93</b>
Drift [dB]	<b>0.19</b>	RFail [dBV/m]	<b>25.73</b>



# PCS 1900 RF Interference Potential Test Report

## Hardware Setup

Probe | Calibration Date EF3DV3 - SN4028 | September 04, 2023  
 DAE | Calibration Date DAE4 Sn1546 | March 11, 2024  
 Software Version 1.2.0.1713

## Communication Systems

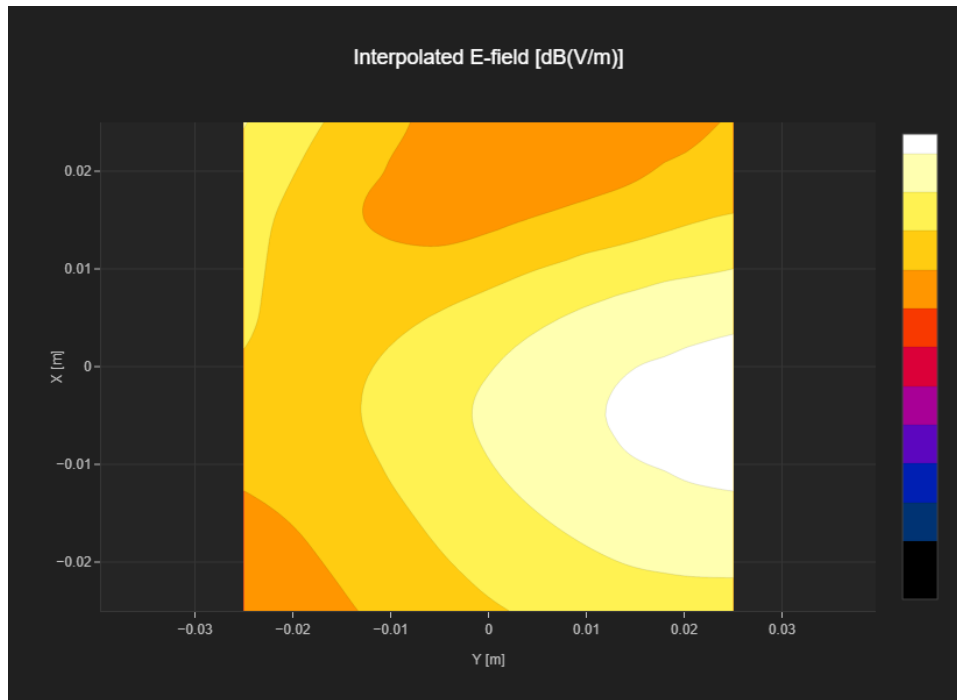
MIF 3.8  
 Channel | Frequency [MHz] 661 | 1880.0  
 Communication Systems' Name GPRS-FDD (TDMA, GMSK, TN 0)

## Grid Settings

Extent X [mm]	50.0	Step X [mm]	10.0
Extent Y [mm]	50.0	Step Y [mm]	10.0
Distance [mm]	15.0		

## Results

E <sub>max</sub> [dBV/m]	<b>26.47</b>	E <sub>avg 50x50 Max</sub> [dBV/m]	<b>22.78</b>
Drift [dB]	<b>-0.08</b>	RFail [dBV/m]	<b>26.58</b>





# PCS 1900 RF Interference Potential Test Report

## Hardware Setup

Probe | Calibration Date EF3DV3 - SN4028 | September 04, 2023  
 DAE | Calibration Date DAE4 Sn1546 | March 11, 2024  
 Software Version 1.2.0.1713

## Communication Systems

MIF 3.8  
 Channel | Frequency [MHz] 810 | 1909.8  
 Communication Systems' Name GPRS-FDD (TDMA, GMSK, TN 0)

## Grid Settings

Extent X [mm]	50.0	Step X [mm]	10.0
Extent Y [mm]	50.0	Step Y [mm]	10.0
Distance [mm]	15.0		

## Results

E <sub>max</sub> [dBV/m]	<b>26.27</b>	E <sub>avg 50x50 Max</sub> [dBV/m]	<b>22.76</b>
Drift [dB]	<b>-0.12</b>	RFail [dBV/m]	<b>26.56</b>

