

**Band n53: 5G NR (DFT-s-OFDM, 50% RB, 10 MHz, QPSK, 30 kHz) RBPosition:Mid  
AntennaCfg:SISO, CHEEK**

**Exposure Conditions**

Band	Band n53	TSL Permittivity	38.5
Frequency [MHz]   Channel Number	2489.300   497860	TSL Conductivity [S/m]	1.83
Group   UID	5G NR FR1 TDD   10908-AAC	Phantom Section   TSL	RightHead   HSL
Conversion Factor	7.3	Test Distance [mm]	0.00

**Hardware Setup**

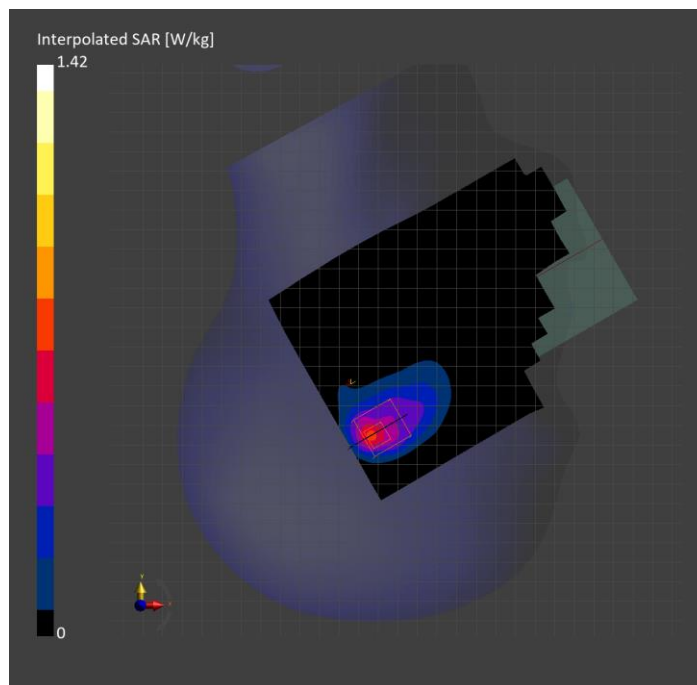
Probe   Calibration Date	EX3DV4 - SN7850   2023-10-27	Phantom	Twin-SAM V8.0 (30deg probe tilt)
DAE   Calibration Date	DAE4 Sn1673   2024-05-13	TSL Type	HBBL-600-10000
Software Version	16.2.4.2524		

**Scan Setup**

	Area Scan	Zoom Scan
Grid Extents [mm]	120.0 x 180.0	30.0 x 30.0 x 30.0
Grid Steps [mm]	10.0 x 10.0	5.0 x 5.0 x 1.5
Sensor Surface [mm]	3.0	1.4
Graded Grid	N/A	Yes
M2/M1 [%]		71.7
Dist 3dB Peak [mm]		7.3
Peak SAR [W/kg]   SAR Peak Location [mm]	N/A	1.42   [16.9, -335.3, -173.9]

**Measurement Results**

	Area Scan	Zoom Scan
psSAR1g [W/Kg]	0.542	<b>0.553</b>
psSAR10g [W/Kg]	0.262	<b>0.248</b>
Power Drift [dB]	N/A	0.02



# MSS: 1-PRB SC-FDMA, BACK

## Exposure Conditions

Band	MSS	TSL Permittivity	40.2
Frequency [MHz]   Channel Number	1617.600   262391	TSL Conductivity [S/m]	1.23
Group   UID	CW   0--	Phantom Section   TSL	Flat   HSL
Conversion Factor	8.51	Test Distance [mm]	0.00

## Hardware Setup

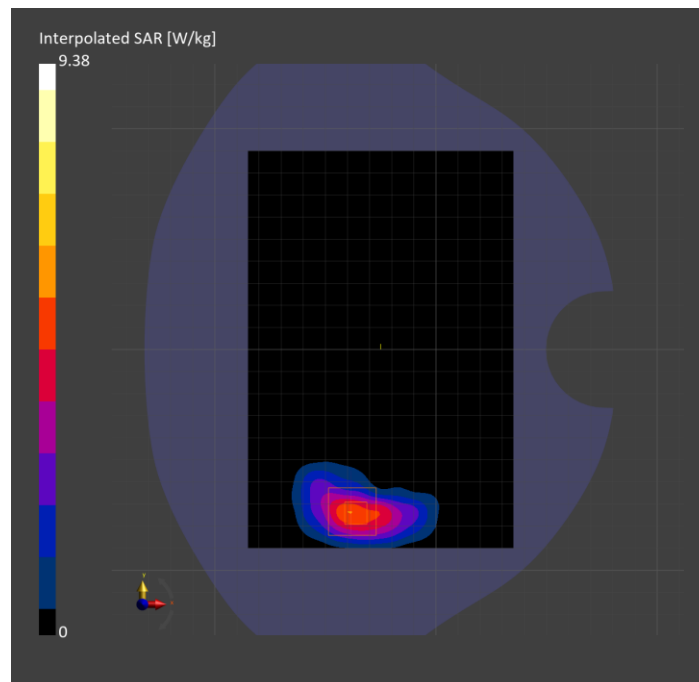
Probe   Calibration Date	EX3DV4 - SN3989   2024-01-09	Phantom	Twin-SAM V8.0 (30deg probe tilt)
DAE   Calibration Date	DAE4 Sn1433   2024-02-08	TSL Type	HBBL-600-10000
Software Version	16.2.4.2524		

## Scan Setup

	Area Scan	Zoom Scan
Grid Extents [mm]	120.0 x 180.0	30.0 x 30.0 x 30.0
Grid Steps [mm]	15.0 x 15.0	5.5 x 5.5 x 1.5
Sensor Surface [mm]	3.0	1.4
Graded Grid	N/A	Yes
M2/M1 [%]		78.6
Dist 3dB Peak [mm]		6.5
Peak SAR [W/kg]   SAR Peak Location [mm]	N/A	9.38   [-38.4, -72.6, -207.0]

## Measurement Results

	Area Scan	Zoom Scan
psSAR1g [W/Kg]	4.31	4.41
psSAR10g [W/Kg]	2.29	2.11
Power Drift [dB]	-0.01	0.05



**Band 30: LTE-FDD (SC-FDMA, 50% RB, 10 MHz, QPSK) RBPosition:Low**  
**AntennaCfg:SISO, CHEEK**

**Exposure Conditions**

Band	Band 30	TSL Permittivity	39.6
Frequency [MHz]   Channel Number	2310.000   27710	TSL Conductivity [S/m]	1.70
Group   UID	LTE-FDD   10154-CAH	Phantom Section   TSL	LeftHead   HSL
Conversion Factor	7.39	Test Distance [mm]	0.00

**Hardware Setup**

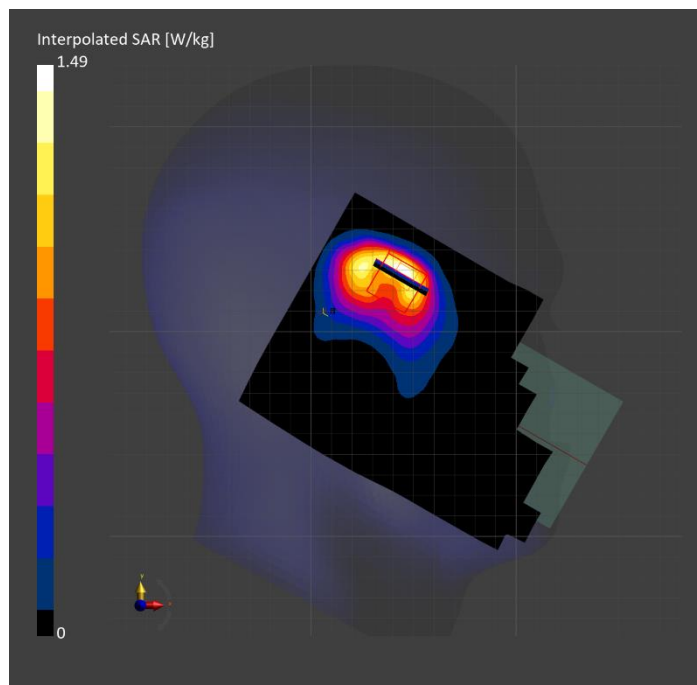
Probe   Calibration Date	EX3DV4 - SN3929   2024-03-14	Phantom	Twin-SAM V5.0 (30deg probe tilt)
DAE   Calibration Date	DAE4 Sn1546   2024-03-11	TSL Type	HBBL-600-10000
Software Version	16.2.4.2524		

**Scan Setup**

	Area Scan	Zoom Scan
Grid Extents [mm]	120.0 x 180.0	30.0 x 30.0 x 30.0
Grid Steps [mm]	10.0 x 10.0	5.0 x 5.0 x 1.5
Sensor Surface [mm]	3.0	1.4
Graded Grid	N/A	Yes
M2/M1 [%]		80.2
Dist 3dB Peak [mm]		6.7
Peak SAR [W/kg]   SAR Peak Location [mm]	N/A	1.49   [45.7, 328.3, -174.6]

**Measurement Results**

	Area Scan	Zoom Scan
psSAR1g [W/Kg]	0.674	<b>0.701</b>
psSAR10g [W/Kg]	0.352	<b>0.352</b>
Power Drift [dB]	N/A	-0.02



# Band 48: LTE-TDD (SC-FDMA, 1 RB, 20 MHz, QPSK, UL Subframe=2,3,4,7,8,9) RBPosition:Mid AntennaCfg:SISO, EDGE RIGHT

## Exposure Conditions

Band	Band 48	TSL Permittivity	38.1
Frequency [MHz]   Channel Number	3690.000   56640	TSL Conductivity [S/m]	2.93
Group   UID	LTE-TDD   10435-AAG	Phantom Section   TSL	Flat   HSL
Conversion Factor	6.88	Test Distance [mm]	5.00

## Hardware Setup

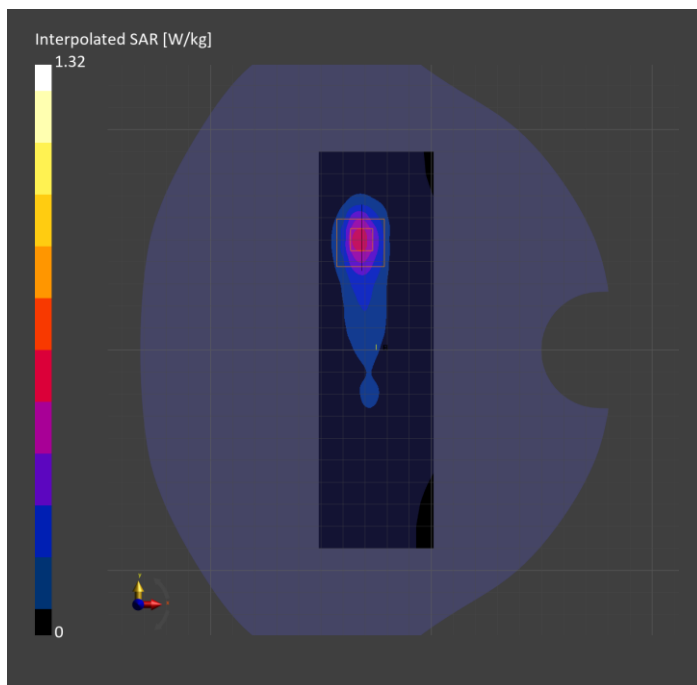
Probe   Calibration Date	EX3DV4 - SN7335   2024-01-09	Phantom	Twin-SAM V8.0 (30deg probe tilt)
DAE   Calibration Date	DAE4ip Sn1619   2024-04-11	TSL Type	HBBL-600-10000
Software Version	16.2.4.2524		

## Scan Setup

	Area Scan	Zoom Scan
Grid Extents [mm]	52.0 x 180.0	28.0 x 28.0 x 28.0
Grid Steps [mm]	8.66 x 10.0	5.0 x 5.0 x 1.4
Sensor Surface [mm]	3.0	1.4
Graded Grid	N/A	Yes
M2/M1 [%]		71.9
Dist 3dB Peak [mm]		7.1
Peak SAR [W/kg]   SAR Peak Location [mm]	N/A	1.32   [-31.4, 51.0, -210.3]

## Measurement Results

	Area Scan	Zoom Scan
psSAR1g [W/Kg]	0.435	<b>0.458</b>
psSAR10g [W/Kg]	0.163	<b>0.165</b>
Power Drift [dB]	N/A	-0.01



# WLAN 2.4GHz: IEEE 802.11b WiFi 2.4 GHz (DSSS, 1 Mbps, 99pc duty cycle), EDGE LEFT

## Exposure Conditions

Band	WLAN 2.4GHz	TSL Permittivity	41.0
Frequency [MHz]   Channel Number	2462.000   11	TSL Conductivity [S/m]	1.80
Group   UID	WLAN   10415-AAA	Phantom Section   TSL	Flat   HSL
Conversion Factor	7.18	Test Distance [mm]	5.00

## Hardware Setup

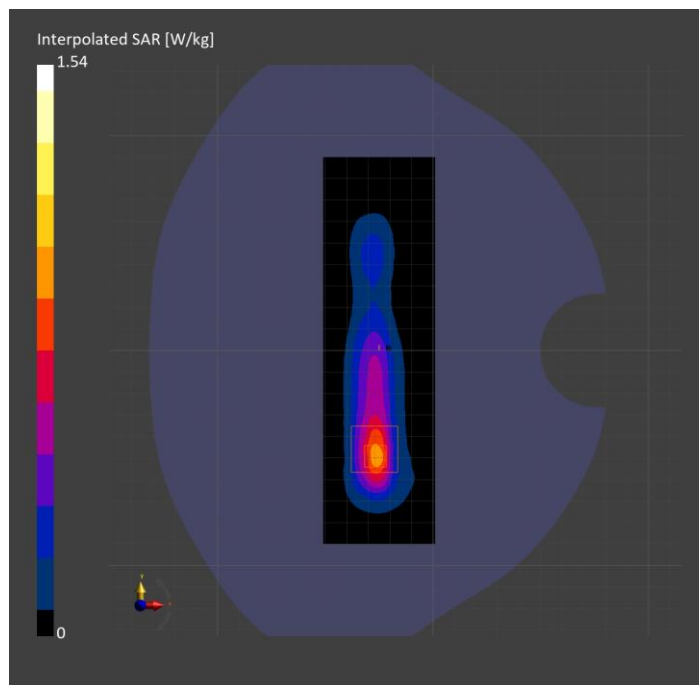
Probe   Calibration Date	EX3DV4 - SN3772   2024-02-07	Phantom	Twin-SAM V8.0 (30deg probe tilt)
DAE   Calibration Date	DAE4 Sn1258   2024-03-12	TSL Type	HBBL-600-10000
Software Version	16.2.4.2524		

## Scan Setup

	Area Scan	Zoom Scan
Grid Extents [mm]	52.0 x 180.0	30.0 x 30.0 x 30.0
Grid Steps [mm]	8.66 x 10.0	5.0 x 5.0 x 1.5
Sensor Surface [mm]	3.0	1.4
Graded Grid	N/A	Yes
M2/M1 [%]		81.4
Dist 3dB Peak [mm]		7.0
Peak SAR [W/kg]   SAR Peak Location [mm]	N/A	1.54   [-26.9, -49.0, -207.0]

## Measurement Results

	Area Scan	Zoom Scan
psSAR1g [W/Kg]	0.726	<b>0.743</b>
psSAR10g [W/Kg]	0.317	<b>0.324</b>
Power Drift [dB]	N/A	-0.01



# WLAN 5GHz: IEEE 802.11ac WiFi (160MHz, MCS0, 99pc duty cycle), BACK

## Exposure Conditions

Band	WLAN 5GHz	TSL Permittivity	34.3
Frequency [MHz]   Channel Number	5250.000   50	TSL Conductivity [S/m]	4.50
Group   UID	WLAN   10554-AAE	Phantom Section   TSL	Flat   HSL
Conversion Factor	5.19	Test Distance [mm]	5.00

## Hardware Setup

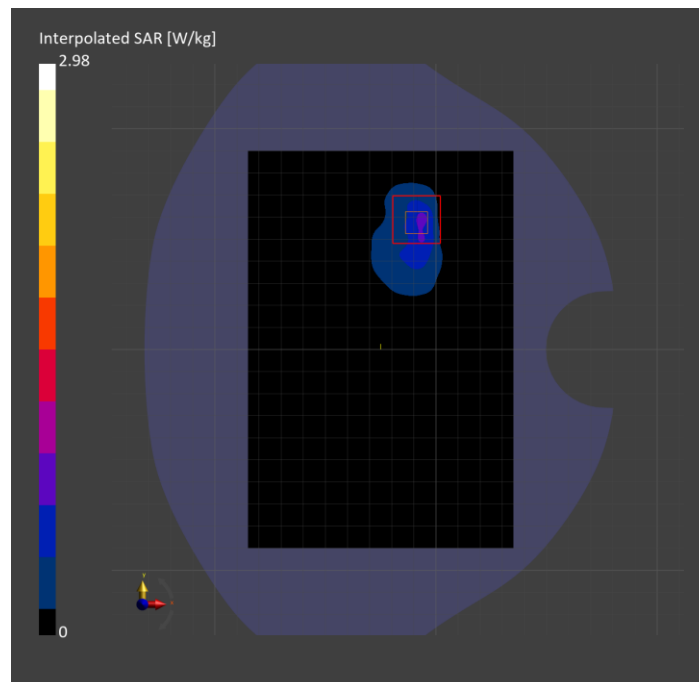
Probe   Calibration Date	EX3DV4 - SN3772   2024-02-07	Phantom	Twin-SAM V8.0 (30deg probe tilt)
DAE   Calibration Date	DAE4 Sn1258   2024-03-12	TSL Type	HBBL-600-10000
Software Version	16.2.4.2524		

## Scan Setup

	Area Scan	Zoom Scan
Grid Extents [mm]	120.0 x 180.0	22.0 x 22.0 x 22.0
Grid Steps [mm]	10.0 x 10.0	3.8 x 3.8 x 1.4
Sensor Surface [mm]	3.0	1.4
Graded Grid	N/A	Yes
M2/M1 [%]		63.5
Dist 3dB Peak [mm]		5.8
Peak SAR [W/kg]   SAR Peak Location [mm]	N/A	2.98   [-8.4, 58.1, -207.0]

## Measurement Results

	Area Scan	Zoom Scan
psSAR1g [W/Kg]	0.551	<b>0.737</b>
psSAR10g [W/Kg]	0.208	<b>0.227</b>
Power Drift [dB]	N/A	0.08



# ISM 2.4 GHz Band: IEEE 802.15.1 Bluetooth (GFSK, DH5), EDGE RIGHT

## Exposure Conditions

Band	ISM 2.4 GHz Band	TSL Permittivity	41.1
Frequency [MHz]   Channel Number	2441.000   39	TSL Conductivity [S/m]	1.79
Group   UID	Bluetooth   10032-CAA	Phantom Section   TSL	Flat   HSL
Conversion Factor	7.18	Test Distance [mm]	5.00

## Hardware Setup

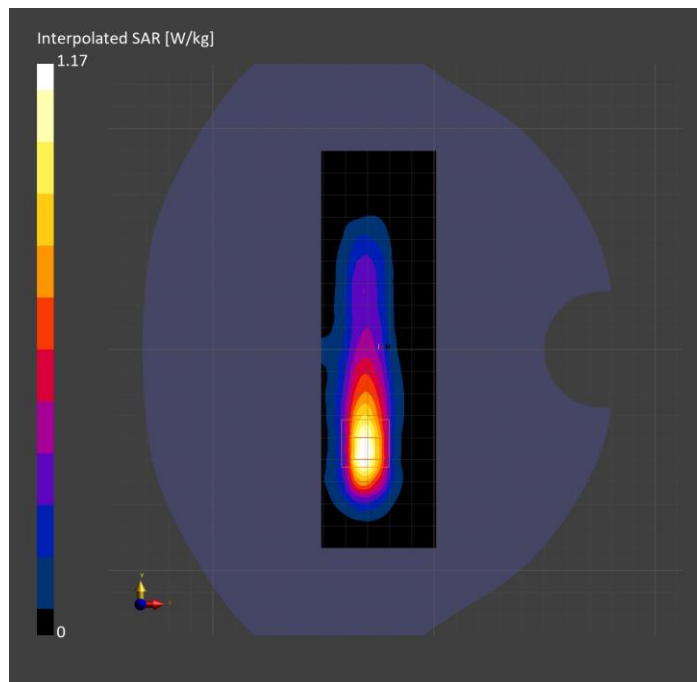
Probe   Calibration Date	EX3DV4 - SN3772   2024-02-07	Phantom	Twin-SAM V8.0 (30deg probe tilt)
DAE   Calibration Date	DAE4 Sn1258   2024-03-12	TSL Type	HBBL-600-10000
Software Version	16.2.4.2524		

## Scan Setup

	Area Scan	Zoom Scan
Grid Extents [mm]	52.0 x 180.0	30.0 x 30.0 x 30.0
Grid Steps [mm]	8.66 x 10.0	5.0 x 5.0 x 1.5
Sensor Surface [mm]	3.0	1.4
Graded Grid	N/A	Yes
M2/M1 [%]		81.7
Dist 3dB Peak [mm]		7.0
Peak SAR [W/kg]   SAR Peak Location [mm]	N/A	1.17   [-31.1, -45.5, -207.0]

## Measurement Results

	Area Scan	Zoom Scan
psSAR1g [W/Kg]	0.584	<b>0.571</b>
psSAR10g [W/Kg]	0.264	<b>0.260</b>
Power Drift [dB]	N/A	-0.10



# NFC: Type A, BACK

## Exposure Conditions

Band	NFC	TSL Permittivity	54.0
Frequency [MHz]   Channel Number	13.600   N/A	TSL Conductivity [S/m]	0.705
Group   UID	CW   0--	Phantom Section   TSL	Flat   HSL
Conversion Factor	17.98	Test Distance [mm]	0.00

## Hardware Setup

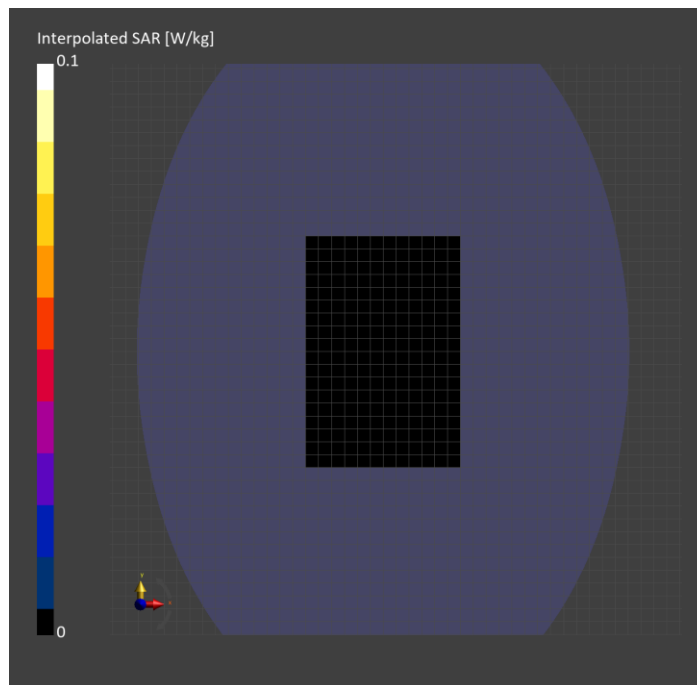
Probe   Calibration Date	EX3DV4 - SN3991   2023-10-12	Phantom	ELI V5.0 (20deg probe tilt)
DAE   Calibration Date	DAE4 Sn1380   2024-02-09	TSL Type	HBBL-600-10000
Software Version	16.2.4.2524		

## Scan Setup

	Area Scan
Grid Extents [mm]	120.0 x 180.0
Grid Steps [mm]	15.0 x 15.0
Sensor Surface [mm]	3.0
Graded Grid	N/A

## Measurement Results

	Area Scan
psSAR1g [W/Kg]	0
psSAR10g [W/Kg]	0
Power Drift [dB]	N/A





# U-NII-5: IEEE 802.11ax (160MHz, MCS0, 99pc duty cycle), BACK

## Exposure Conditions

Band	U-NII-5	TSL Permittivity	35.6
Frequency [MHz]   Channel Number	6025.000   15	TSL Conductivity [S/m]	5.56
Group   UID	WLAN   10755-AAC	Phantom Section   TSL	Flat   HSL
Conversion Factor	5.1	Test Distance [mm]	5.00

## Hardware Setup

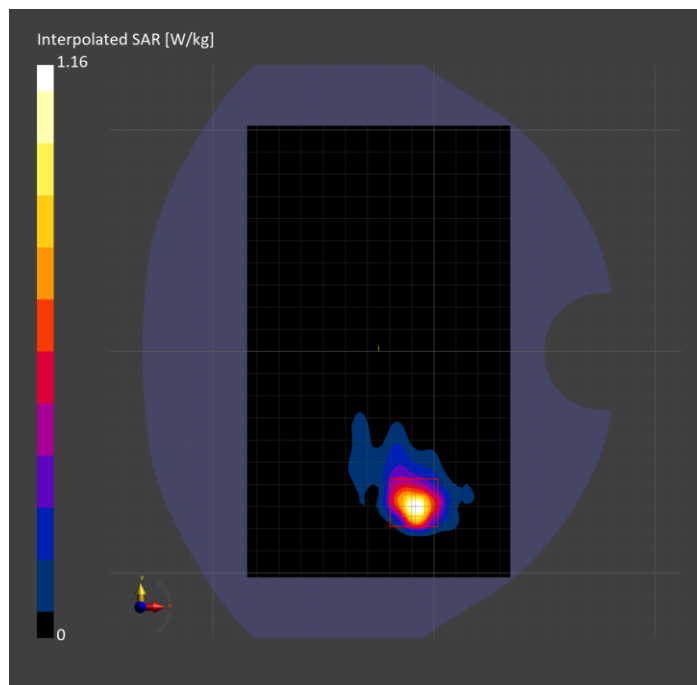
Probe   Calibration Date	EX3DV4 - SN7810   2024-05-08	Phantom	Twin-SAM V8.0 (30deg probe tilt)
DAE   Calibration Date	DAE4 Sn1787   2024-05-02	TSL Type	HBBL-600-10000
Software Version	16.2.4.2524		

## Scan Setup

	Area Scan	Zoom Scan
Grid Extents [mm]	119.0 x 204.0	22.0 x 22.0 x 22.0
Grid Steps [mm]	8.5 x 8.5	3.4 x 3.4 x 1.4
Sensor Surface [mm]	3.0	1.4
Graded Grid	N/A	Yes
M2/M1 [%]		54.7
Dist 3dB Peak [mm]		6.2
Peak SAR [W/kg]   SAR Peak Location [mm]	N/A	1.16   [-8.4, -69.9, -207.0]

## Measurement Results

	Area Scan	Zoom Scan	APD
psSAR1g [W/Kg]	0.212	<b>0.250</b>	N/A
psSAR8g [W/Kg]	0.070	<b>0.080</b>	N/A
psSAR10g [W/Kg]	0.060	<b>0.068</b>	N/A
psAPD (4.0cm <sup>2</sup> , sq.) [W/m <sup>2</sup> ]	N/A	N/A	<b>1.59</b>
Power Drift [dB]	N/A	-0.16	-0.16



# Band n53: 5G NR (DFT-s-OFDM, 50% RB, 10 MHz, QPSK, 30 kHz) RBPosition:Mid AntennaCfg:SISO, CHEEK

## Exposure Conditions

Band	Band n53	TSL Permittivity	38.5
Frequency [MHz]   Channel Number	2489.300   497860	TSL Conductivity [S/m]	1.83
Group   UID	5G NR FR1 TDD   10908-AAC	Phantom Section   TSL	RightHead   HSL
Conversion Factor	7.3	Test Distance [mm]	0.00

## Hardware Setup

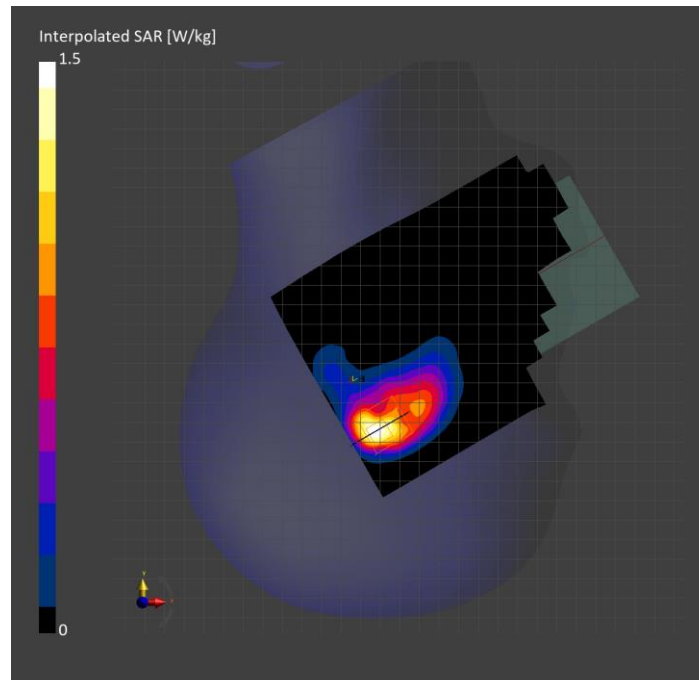
Probe   Calibration Date	EX3DV4 - SN7850   2023-10-27	Phantom	Twin-SAM V8.0 (30deg probe tilt)
DAE   Calibration Date	DAE4 Sn1673   2024-05-13	TSL Type	HBBL-600-10000
Software Version	16.2.4.2524		

## Scan Setup

	Area Scan	Zoom Scan
Grid Extents [mm]	120.0 x 180.0	30.0 x 30.0 x 30.0
Grid Steps [mm]	10.0 x 10.0	4.8 x 4.8 x 1.5
Sensor Surface [mm]	3.0	1.4
Graded Grid	N/A	Yes
M2/M1 [%]		74.2
Dist 3dB Peak [mm]		6.2
Peak SAR [W/kg]   SAR Peak Location [mm]	N/A	1.50   [17.7, -335.0, -174.0]

## Measurement Results

	Area Scan	Zoom Scan
psSAR1g [W/Kg]	0.560	<b>0.591</b>
psSAR10g [W/Kg]	0.268	<b>0.253</b>
Power Drift [dB]	N/A	-0.02



# MSS: 1-PRB SC-FDMA, BACK

## Exposure Conditions

Band	MSS	TSL Permittivity	40.2
Frequency [MHz]   Channel Number	1617.600   262391	TSL Conductivity [S/m]	1.23
Group   UID	CW   0--	Phantom Section   TSL	Flat   HSL
Conversion Factor	8.51	Test Distance [mm]	0.00

## Hardware Setup

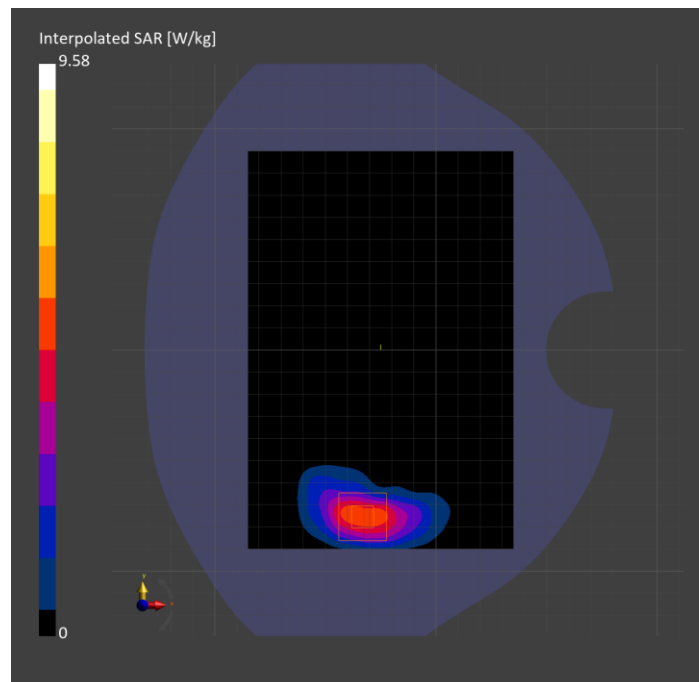
Probe   Calibration Date	EX3DV4 - SN3989   2024-01-09	Phantom	Twin-SAM V8.0 (30deg probe tilt)
DAE   Calibration Date	DAE4 Sn1433   2024-02-08	TSL Type	HBBL-600-10000
Software Version	16.2.4.2524		

## Scan Setup

	Area Scan	Zoom Scan
Grid Extents [mm]	120.0 x 180.0	30.0 x 30.0 x 30.0
Grid Steps [mm]	15.0 x 15.0	4.7 x 4.7 x 1.4
Sensor Surface [mm]	3.0	1.4
Graded Grid	N/A	Yes
M2/M1 [%]		81.8
Dist 3dB Peak [mm]		6.8
Peak SAR [W/kg]   SAR Peak Location [mm]	N/A	9.58   [-32.5, -74.5, -207.0]

## Measurement Results

	Area Scan	Zoom Scan
psSAR1g [W/Kg]	4.40	<b>4.54</b>
psSAR10g [W/Kg]	2.38	<b>2.17</b>
Power Drift [dB]	0.04	-0.03



**Band 30: LTE-FDD (SC-FDMA, 50% RB, 10 MHz, QPSK) RBPosition:Low**  
**AntennaCfg:SISO, CHEEK**

**Exposure Conditions**

Band	Band 30	TSL Permittivity	39.1
Frequency [MHz]   Channel Number	2310.000   27710	TSL Conductivity [S/m]	1.62
Group   UID	LTE-FDD   10154-CAH	Phantom Section   TSL	LeftHead   HSL
Conversion Factor	7.39	Test Distance [mm]	0.00

**Hardware Setup**

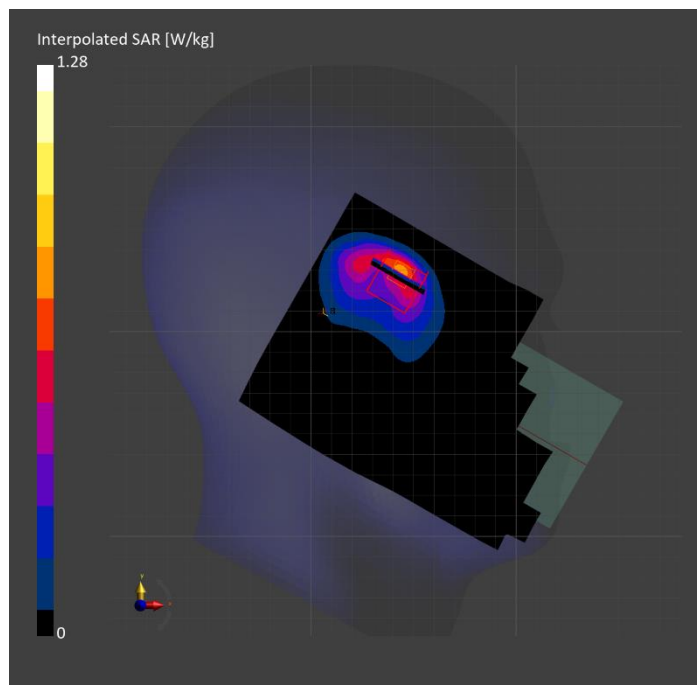
Probe   Calibration Date	EX3DV4 - SN3929   2024-03-14	Phantom	Twin-SAM V5.0 (30deg probe tilt)
DAE   Calibration Date	DAE4 Sn1546   2024-03-11	TSL Type	HBBL-600-10000
Software Version	16.2.4.2524		

**Scan Setup**

	Area Scan	Zoom Scan
Grid Extents [mm]	120.0 x 180.0	30.0 x 30.0 x 30.0
Grid Steps [mm]	10.0 x 10.0	5.0 x 5.0 x 1.5
Sensor Surface [mm]	3.0	1.4
Graded Grid	N/A	Yes
M2/M1 [%]		79.5
Dist 3dB Peak [mm]		6.3
Peak SAR [W/kg]   SAR Peak Location [mm]	N/A	1.28   [43.6, 329.5, -174.6]

**Measurement Results**

	Area Scan	Zoom Scan
psSAR1g [W/Kg]	0.566	<b>0.582</b>
psSAR10g [W/Kg]	0.276	<b>0.277</b>
Power Drift [dB]	N/A	-0.01



# Band 48: LTE-TDD (SC-FDMA, 1 RB, 20 MHz, QPSK, UL Subframe=2,3,4,7,8,9) RBPosition:Mid AntennaCfg:SISO, EDGE RIGHT

## Exposure Conditions

Band	Band 48	TSL Permittivity	35.7
Frequency [MHz]   Channel Number	3690.000   56640	TSL Conductivity [S/m]	3.08
Group   UID	LTE-TDD   10435-AAG	Phantom Section   TSL	Flat   HSL
Conversion Factor	6.99	Test Distance [mm]	5.00

## Hardware Setup

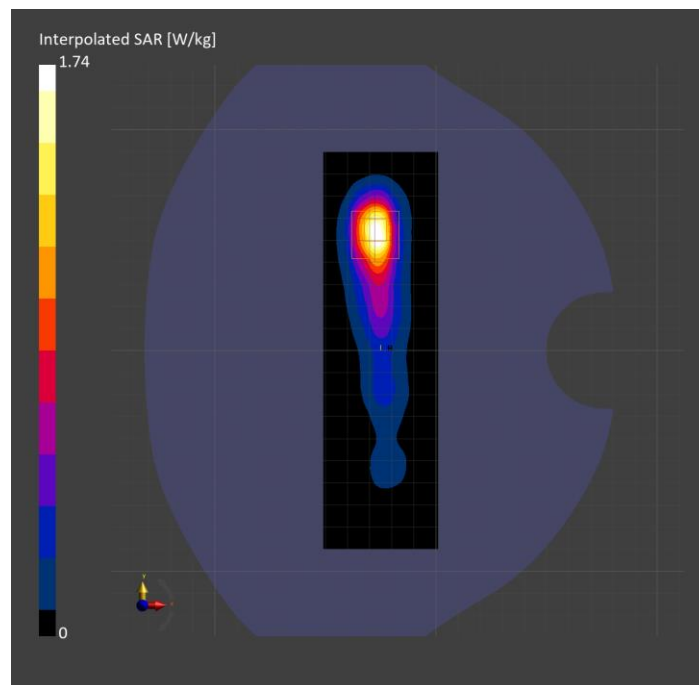
Probe   Calibration Date	EX3DV4 - SN7356   2024-03-14	Phantom	Twin-SAM V5.0 (30deg probe tilt)
DAE   Calibration Date	DAE4 Sn1259   2023-09-06	TSL Type	HBBL-600-10000
Software Version	16.2.4.2524		

## Scan Setup

	Area Scan	Zoom Scan
Grid Extents [mm]	52.0 x 180.0	28.0 x 28.0 x 28.0
Grid Steps [mm]	8.66 x 10.0	5.0 x 5.0 x 1.4
Sensor Surface [mm]	3.0	1.4
Graded Grid	N/A	Yes
M2/M1 [%]		72.5
Dist 3dB Peak [mm]		7.0
Peak SAR [W/kg]   SAR Peak Location [mm]	N/A	1.74   [-27.7, 54.5, -207.0]

## Measurement Results

	Area Scan	Zoom Scan
psSAR1g [W/Kg]	0.569	<b>0.594</b>
psSAR10g [W/Kg]	0.216	<b>0.208</b>
Power Drift [dB]	N/A	-0.05



# WLAN 2.4GHz: IEEE 802.11b WiFi 2.4 GHz (DSSS, 1 Mbps, 99pc duty cycle), EDGE LEFT

## Exposure Conditions

Band	WLAN 2.4GHz	TSL Permittivity	38.0
Frequency [MHz]   Channel Number	2462.000   11	TSL Conductivity [S/m]	1.72
Group   UID	WLAN   10415-AAA	Phantom Section   TSL	Flat   HSL
Conversion Factor	6.96	Test Distance [mm]	5.00

## Hardware Setup

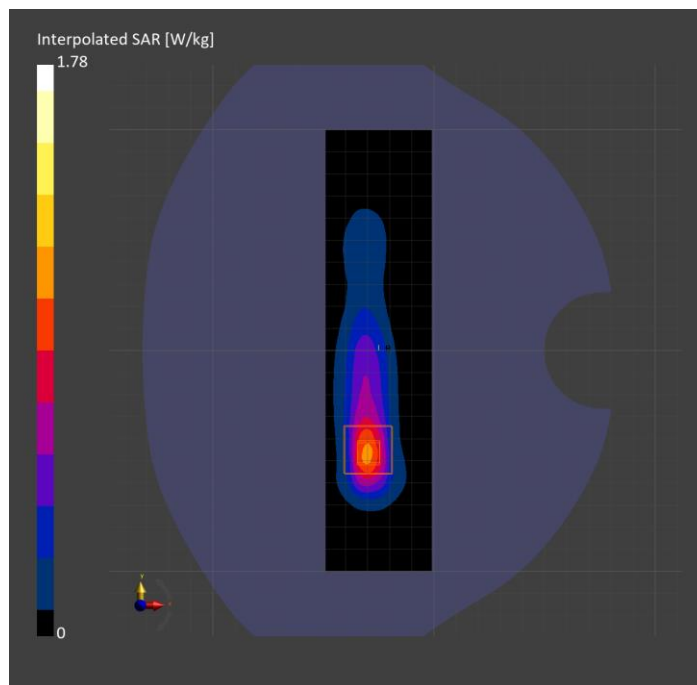
Probe   Calibration Date	EX3DV4 - SN7779   2024-05-10	Phantom	Twin-SAM V8.0 (30deg probe tilt)
DAE   Calibration Date	DAE4 Sn1439   2024-04-24	TSL Type	HBBL-600-10000
Software Version	16.2.4.2524		

## Scan Setup

	Area Scan	Zoom Scan
Grid Extents [mm]	48.0 x 200.0	30.0 x 30.0 x 30.0
Grid Steps [mm]	8.0 x 10.0	5.0 x 5.0 x 1.5
Sensor Surface [mm]	3.0	1.4
Graded Grid	N/A	Yes
M2/M1 [%]		81.7
Dist 3dB Peak [mm]		7.1
Peak SAR [W/kg]   SAR Peak Location [mm]	N/A	1.78   [-29.8, -47.0, -207.0]

## Measurement Results

	Area Scan	Zoom Scan
psSAR1g [W/Kg]	0.826	<b>0.854</b>
psSAR10g [W/Kg]	0.368	<b>0.367</b>
Power Drift [dB]	N/A	-0.02



# WLAN 5GHz: IEEE 802.11ac WiFi (160MHz, MCS0, 99pc duty cycle), BACK

## Exposure Conditions

Band	WLAN 5GHz	TSL Permittivity	36.5
Frequency [MHz]   Channel Number	5250.000   50	TSL Conductivity [S/m]	4.46
Group   UID	WLAN   10554-AAE	Phantom Section   TSL	Flat   HSL
Conversion Factor	5.17	Test Distance [mm]	5.00

## Hardware Setup

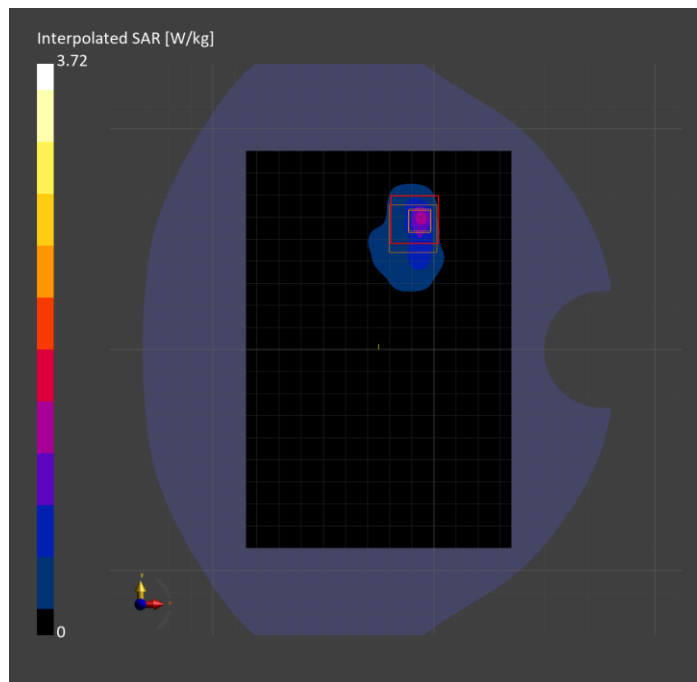
Probe   Calibration Date	EX3DV4 - SN7779   2024-05-10	Phantom	Twin-SAM V8.0 (30deg probe tilt)
DAE   Calibration Date	DAE4 Sn1439   2024-04-24	TSL Type	HBBL-600-10000
Software Version	16.2.4.2524		

## Scan Setup

	Area Scan	Zoom Scan
Grid Extents [mm]	120.0 x 180.0	22.0 x 22.0 x 22.0
Grid Steps [mm]	10.0 x 10.0	4.0 x 4.0 x 1.4
Sensor Surface [mm]	3.0	1.4
Graded Grid	N/A	Yes
M2/M1 [%]		63.5
Dist 3dB Peak [mm]		4.8
Peak SAR [W/kg]   SAR Peak Location [mm]	N/A	3.72   [-5.9, 57.6, -207.0]

## Measurement Results

	Area Scan	Zoom Scan
psSAR1g [W/Kg]	0.853	<b>0.883</b>
psSAR10g [W/Kg]	0.273	<b>0.252</b>
Power Drift [dB]	N/A	-0.04



# ISM 2.4 GHz Band: IEEE 802.15.1 Bluetooth (GFSK, DH5), EDGE RIGHT

## Exposure Conditions

Band	ISM 2.4 GHz Band	TSL Permittivity	38.0
Frequency [MHz]   Channel Number	2441.000   39	TSL Conductivity [S/m]	1.71
Group   UID	Bluetooth   10032-CAA	Phantom Section   TSL	Flat   HSL
Conversion Factor	6.96	Test Distance [mm]	5.00

## Hardware Setup

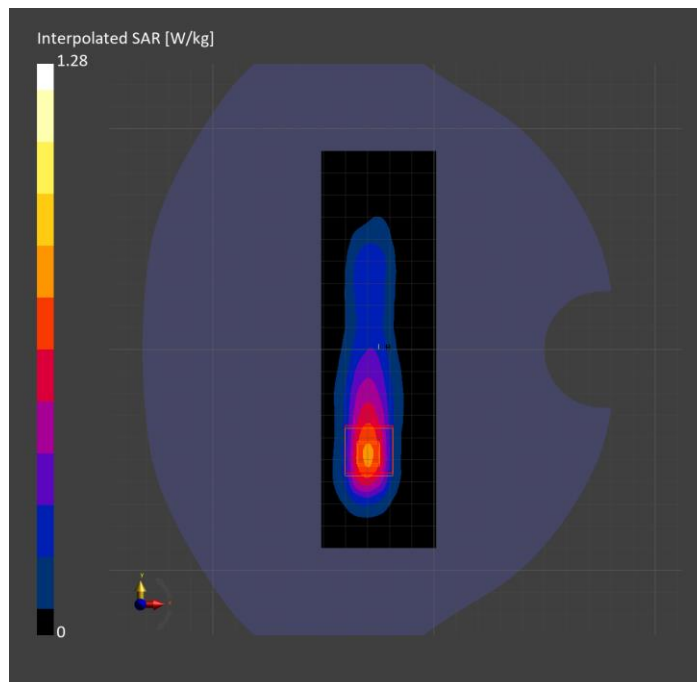
Probe   Calibration Date	EX3DV4 - SN7779   2024-05-10	Phantom	Twin-SAM V8.0 (30deg probe tilt)
DAE   Calibration Date	DAE4 Sn1439   2024-04-24	TSL Type	HBBL-600-10000
Software Version	16.2.4.2524		

## Scan Setup

	Area Scan	Zoom Scan
Grid Extents [mm]	52.0 x 180.0	30.0 x 30.0 x 30.0
Grid Steps [mm]	8.66 x 10.0	5.0 x 5.0 x 1.5
Sensor Surface [mm]	3.0	1.4
Graded Grid	N/A	Yes
M2/M1 [%]		81.0
Dist 3dB Peak [mm]		8.0
Peak SAR [W/kg]   SAR Peak Location [mm]	N/A	1.28   [-29.8, -52.5, -206.1]

## Measurement Results

	Area Scan	Zoom Scan
psSAR1g [W/Kg]	0.602	<b>0.619</b>
psSAR10g [W/Kg]	0.282	<b>0.280</b>
Power Drift [dB]	N/A	-0.10





# NFC: Type A, BACK

## Exposure Conditions

Band	NFC	TSL Permittivity	54.3
Frequency [MHz]   Channel Number	13.600   N/A	TSL Conductivity [S/m]	0.705
Group   UID	CW   0--	Phantom Section   TSL	Flat   HSL
Conversion Factor	17.98	Test Distance [mm]	0.00

## Hardware Setup

Probe   Calibration Date	EX3DV4 - SN3991   2023-10-12	Phantom	ELI V5.0 (20deg probe tilt)
DAE   Calibration Date	DAE4 Sn1380   2024-02-09	TSL Type	HBBL-600-10000
Software Version	16.2.4.2524		

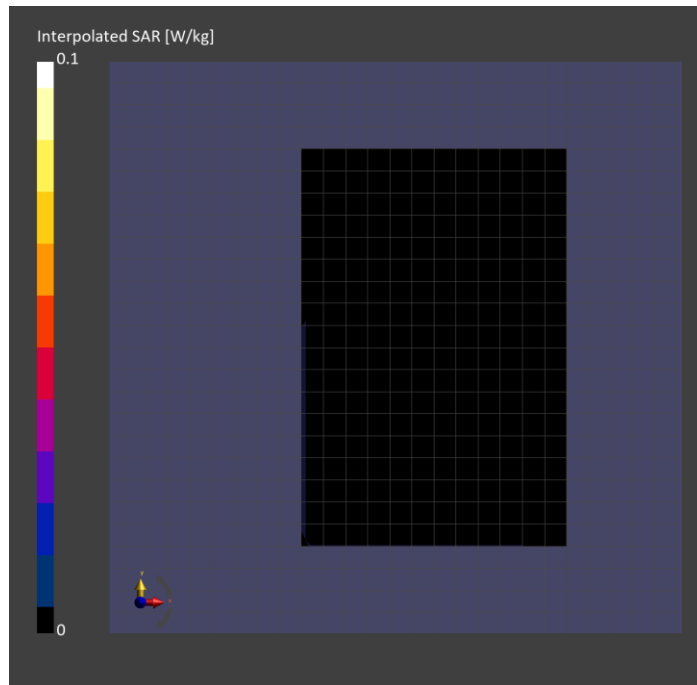
## Scan Setup

### Area Scan

Grid Extents [mm]	120.0 x 180.0
Grid Steps [mm]	15.0 x 15.0
Sensor Surface [mm]	3.0
Graded Grid	N/A

## Measurement Results

	Area Scan
psSAR1g [W/Kg]	0
psSAR10g [W/Kg]	0
Power Drift [dB]	N/A



# U-NII-5: IEEE 802.11ax (160MHz, MCS0, 99pc duty cycle), BACK

## Exposure Conditions

Band	U-NII-5	TSL Permittivity	34.4
Frequency [MHz]   Channel Number	6025.000   15	TSL Conductivity [S/m]	5.40
Group   UID	WLAN   10755-AAC	Phantom Section   TSL	Flat   HSL
Conversion Factor	5.24	Test Distance [mm]	5.00

## Hardware Setup

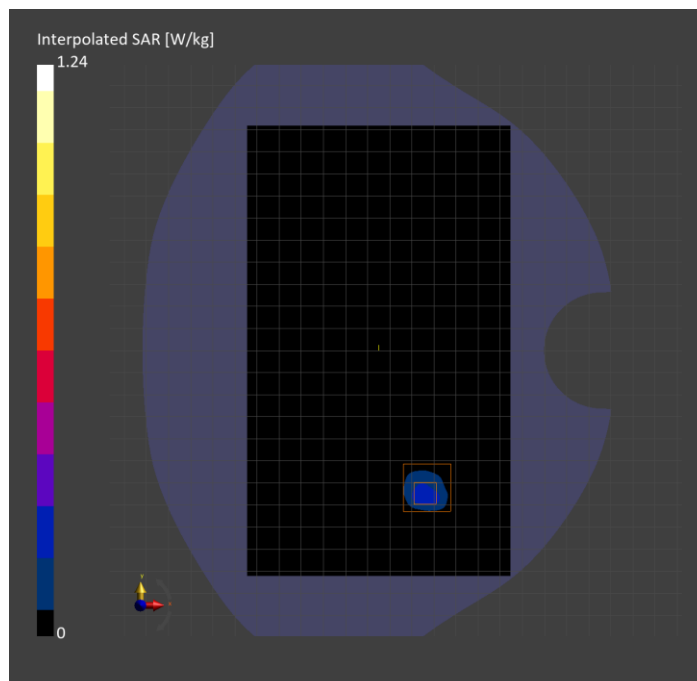
Probe   Calibration Date	EX3DV4 - SN7498   2024-03-12	Phantom	Twin-SAM V8.0 (30deg probe tilt)
DAE   Calibration Date	DAE4 Sn1796   2024-05-02	TSL Type	HBBL-600-10000
Software Version	16.2.4.2524		

## Scan Setup

	Area Scan	Zoom Scan
Grid Extents [mm]	119.0 x 204.0	23.8 x 23.8 x 22.0
Grid Steps [mm]	8.5 x 8.5	3.4 x 3.4 x 1.4
Sensor Surface [mm]	3.0	1.4
Graded Grid	N/A	Yes
M2/M1 [%]		56.0
Dist 3dB Peak [mm]		5.2
Peak SAR [W/kg]   SAR Peak Location [mm]	N/A	1.24   [-3.6, -65.1, -207.0]

## Measurement Results

	Area Scan	Zoom Scan	APD
psSAR1g [W/Kg]	0.193	<b>0.259</b>	N/A
psSAR8g [W/Kg]	0.064	<b>0.079</b>	N/A
psSAR10g [W/Kg]	0.055	<b>0.067</b>	N/A
psAPD (4.0cm <sup>2</sup> , sq.) [W/m <sup>2</sup> ]	N/A	N/A	<b>1.57</b>
Power Drift [dB]	0.09	0.04	0.04



# Band 30: LTE-FDD (SC-FDMA, 50% RB, 10 MHz, QPSK) RBPosition:Low AntennaCfg:SISO, CHEEK

## Exposure Conditions

Band	Band 30	TSL Permittivity	39.6
Frequency [MHz]   Channel Number	2310.000   27710	TSL Conductivity [S/m]	1.70
Group   UID	LTE-FDD   10154-CAH	Phantom Section   TSL	LeftHead   HSL
Conversion Factor	7.39	Test Distance [mm]	0.00

## Hardware Setup

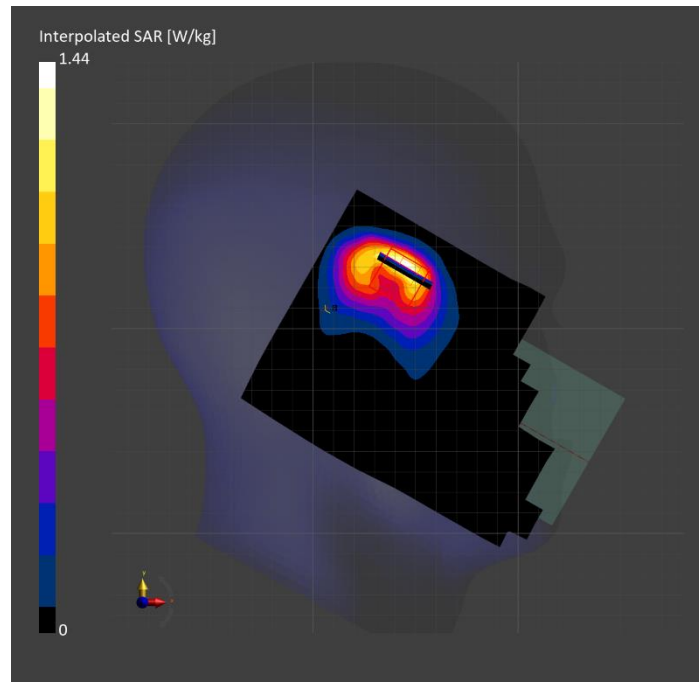
Probe   Calibration Date	EX3DV4 - SN3929   2024-03-14	Phantom	Twin-SAM V5.0 (30deg probe tilt)
DAE   Calibration Date	DAE4 Sn1546   2024-03-11	TSL Type	HBBL-600-10000
Software Version	16.2.4.2524		

## Scan Setup

	Area Scan	Zoom Scan
Grid Extents [mm]	120.0 x 180.0	30.0 x 30.0 x 30.0
Grid Steps [mm]	10.0 x 10.0	5.0 x 5.0 x 1.5
Sensor Surface [mm]	3.0	1.4
Graded Grid	N/A	Yes
M2/M1 [%]		78.9
Dist 3dB Peak [mm]		6.3
Peak SAR [W/kg]   SAR Peak Location [mm]	N/A	1.44   [45.8, 330.5, -174.3]

## Measurement Results

	Area Scan	Zoom Scan
psSAR1g [W/Kg]	0.652	<b>0.653</b>
psSAR10g [W/Kg]	0.322	<b>0.320</b>
Power Drift [dB]	N/A	-0.03



# Band 48: LTE-TDD (SC-FDMA, 1 RB, 20 MHz, QPSK, UL Subframe=2,3,4,7,8,9) RBPosition:Mid AntennaCfg:SISO, EDGE RIGHT

## Exposure Conditions

Band	Band 48	TSL Permittivity	35.6
Frequency [MHz]   Channel Number	3690.000   56640	TSL Conductivity [S/m]	3.18
Group   UID	LTE-TDD   10435-AAG	Phantom Section   TSL	Flat   HSL
Conversion Factor	6.99	Test Distance [mm]	5.00

## Hardware Setup

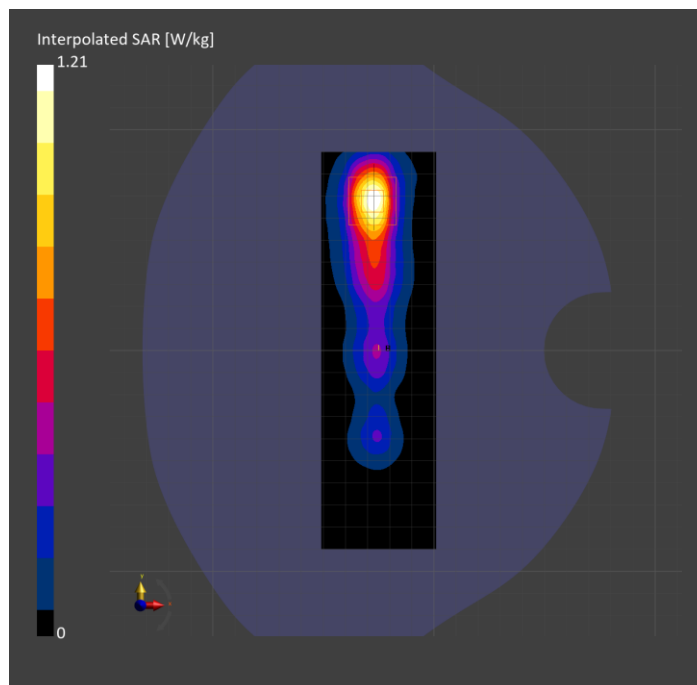
Probe   Calibration Date	EX3DV4 - SN7356   2024-03-14	Phantom	Twin-SAM V5.0 (30deg probe tilt)
DAE   Calibration Date	DAE4 Sn1259   2023-09-06	TSL Type	HBBL-600-10000
Software Version	16.2.4.2524		

## Scan Setup

	Area Scan	Zoom Scan
Grid Extents [mm]	52.0 x 180.0	28.0 x 28.0 x 28.0
Grid Steps [mm]	8.66 x 10.0	5.0 x 5.0 x 1.4
Sensor Surface [mm]	3.0	1.4
Graded Grid	N/A	Yes
M2/M1 [%]		74.5
Dist 3dB Peak [mm]		8.0
Peak SAR [W/kg]   SAR Peak Location [mm]	N/A	1.21   [-27.1, 69.5, -207.0]

## Measurement Results

	Area Scan	Zoom Scan
psSAR1g [W/Kg]	0.439	<b>0.450</b>
psSAR10g [W/Kg]	0.176	<b>0.170</b>
Power Drift [dB]	N/A	-0.05



# WLAN 2.4GHz: IEEE 802.11b WiFi 2.4 GHz (DSSS, 1 Mbps, 99pc duty cycle), EDGE LEFT

## Exposure Conditions

Band	WLAN 2.4GHz	TSL Permittivity	38.0
Frequency [MHz]   Channel Number	2462.000   11	TSL Conductivity [S/m]	1.72
Group   UID	WLAN   10415-AAA	Phantom Section   TSL	Flat   HSL
Conversion Factor	6.96	Test Distance [mm]	5.00

## Hardware Setup

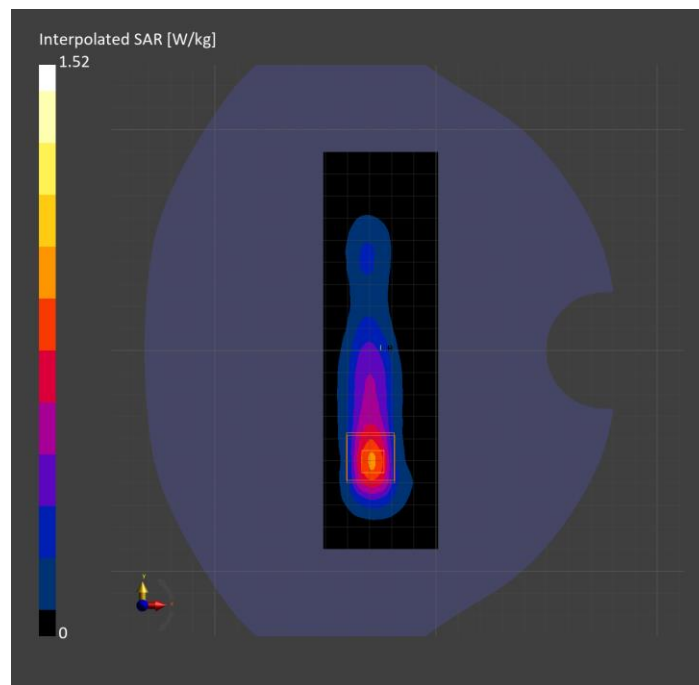
Probe   Calibration Date	EX3DV4 - SN7779   2024-05-10	Phantom	Twin-SAM V8.0 (30deg probe tilt)
DAE   Calibration Date	DAE4 Sn1439   2024-04-24	TSL Type	HBBL-600-10000
Software Version	16.2.4.2524		

## Scan Setup

	Area Scan	Zoom Scan
Grid Extents [mm]	52.0 x 180.0	30.0 x 30.0 x 30.0
Grid Steps [mm]	8.66 x 10.0	5.0 x 5.0 x 1.5
Sensor Surface [mm]	3.0	1.4
Graded Grid	N/A	Yes
M2/M1 [%]		82.4
Dist 3dB Peak [mm]		7.0
Peak SAR [W/kg]   SAR Peak Location [mm]	N/A	1.52   [-29.3, -50.5, -207.0]

## Measurement Results

	Area Scan	Zoom Scan
psSAR1g [W/Kg]	0.697	<b>0.740</b>
psSAR10g [W/Kg]	0.317	<b>0.318</b>
Power Drift [dB]	N/A	-0.12



# WLAN 5GHz: IEEE 802.11ac WiFi (160MHz, MCS0, 99pc duty cycle), BACK

## Exposure Conditions

Band	WLAN 5GHz	TSL Permittivity	36.2
Frequency [MHz]   Channel Number	5250.000   50	TSL Conductivity [S/m]	4.84
Group   UID	WLAN   10554-AAE	Phantom Section   TSL	Flat   HSL
Conversion Factor	5.75	Test Distance [mm]	5.00

## Hardware Setup

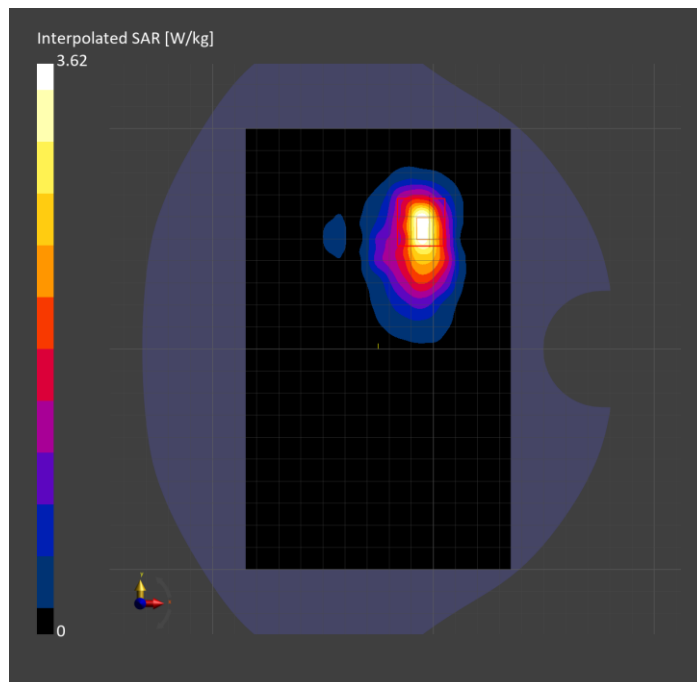
Probe   Calibration Date	EX3DV4 - SN7810   2024-05-08	Phantom	Twin-SAM V8.0 (30deg probe tilt)
DAE   Calibration Date	DAE4 Sn1787   2024-05-02	TSL Type	HBBL-600-10000
Software Version	16.2.4.2524		

## Scan Setup

	Area Scan	Zoom Scan
Grid Extents [mm]	120.0 x 200.0	24.0 x 24.0 x 22.0
Grid Steps [mm]	10.0 x 10.0	4.0 x 4.0 x 1.4
Sensor Surface [mm]	3.0	1.4
Graded Grid	N/A	Yes
M2/M1 [%]		60.4
Dist 3dB Peak [mm]		5.6
Peak SAR [W/kg]   SAR Peak Location [mm]	N/A	3.62   [-1.8, 54.0, -207.0]

## Measurement Results

	Area Scan	Zoom Scan
psSAR1g [W/Kg]	0.622	<b>0.833</b>
psSAR10g [W/Kg]	0.232	<b>0.252</b>
Power Drift [dB]	N/A	-0.00



# ISM 2.4 GHz Band: IEEE 802.15.1 Bluetooth (GFSK, DH5), EDGE RIGHT

## Exposure Conditions

Band	ISM 2.4 GHz Band	TSL Permittivity	38.0
Frequency [MHz]   Channel Number	2441.000   39	TSL Conductivity [S/m]	1.71
Group   UID	Bluetooth   10032-CAA	Phantom Section   TSL	Flat   HSL
Conversion Factor	6.96	Test Distance [mm]	5.00

## Hardware Setup

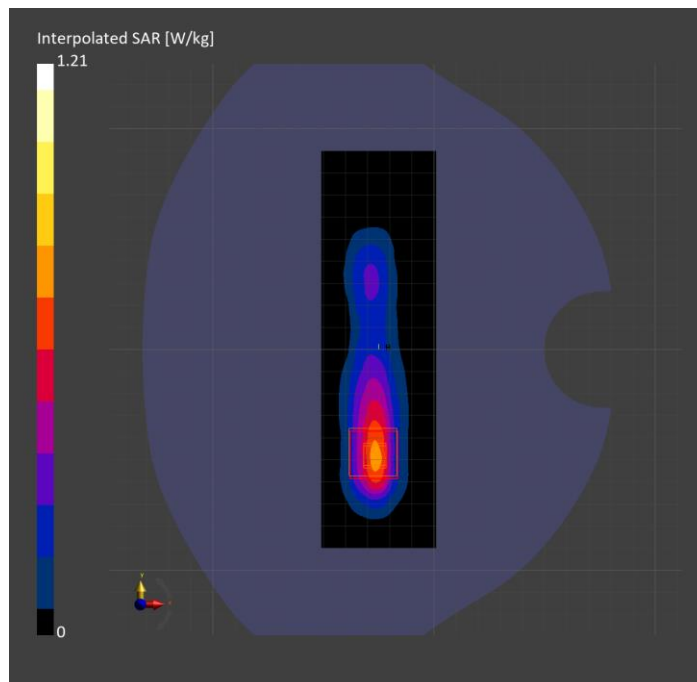
Probe   Calibration Date	EX3DV4 - SN7779   2024-05-10	Phantom	Twin-SAM V8.0 (30deg probe tilt)
DAE   Calibration Date	DAE4 Sn1439   2024-04-24	TSL Type	HBBL-600-10000
Software Version	16.2.4.2524		

## Scan Setup

	Area Scan	Zoom Scan
Grid Extents [mm]	52.0 x 180.0	30.0 x 30.0 x 30.0
Grid Steps [mm]	8.66 x 10.0	5.0 x 5.0 x 1.5
Sensor Surface [mm]	3.0	1.4
Graded Grid	N/A	Yes
M2/M1 [%]		80.6
Dist 3dB Peak [mm]		8.0
Peak SAR [W/kg]   SAR Peak Location [mm]	N/A	1.21   [-26.7, -52.0, -206.5]

## Measurement Results

	Area Scan	Zoom Scan
psSAR1g [W/Kg]	0.567	<b>0.578</b>
psSAR10g [W/Kg]	0.262	<b>0.263</b>
Power Drift [dB]	N/A	-0.03



# NFC: Type A, BACK

## Exposure Conditions

Band	NFC	TSL Permittivity	54.0
Frequency [MHz]   Channel Number	13.600   N/A	TSL Conductivity [S/m]	0.705
Group   UID	CW   0--	Phantom Section   TSL	Flat   HSL
Conversion Factor	17.98	Test Distance [mm]	0.00

## Hardware Setup

Probe   Calibration Date	EX3DV4 - SN3991   2023-10-12	Phantom	ELI V5.0 (20deg probe tilt)
DAE   Calibration Date	DAE4 Sn1380   2024-02-09	TSL Type	HBBL-600-10000
Software Version	16.2.4.2524		

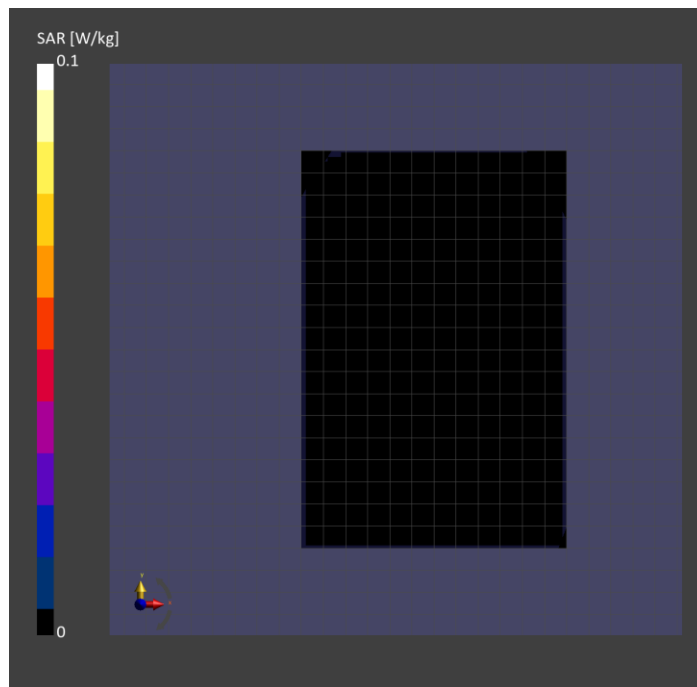
## Scan Setup

### Area Scan

Grid Extents [mm]	120.0 x 180.0
Grid Steps [mm]	15.0 x 15.0
Sensor Surface [mm]	3.0
Graded Grid	N/A

## Measurement Results

	Area Scan
psSAR1g [W/Kg]	0
psSAR10g [W/Kg]	0
Power Drift [dB]	N/A





# U-NII-5: IEEE 802.11ax (160MHz, MCS0, 99pc duty cycle), BACK

## Exposure Conditions

Band	U-NII-5	TSL Permittivity	34.5
Frequency [MHz]   Channel Number	6025.000   15	TSL Conductivity [S/m]	5.59
Group   UID	WLAN   10755-AAC	Phantom Section   TSL	Flat   HSL
Conversion Factor	4.63	Test Distance [mm]	5.00

## Hardware Setup

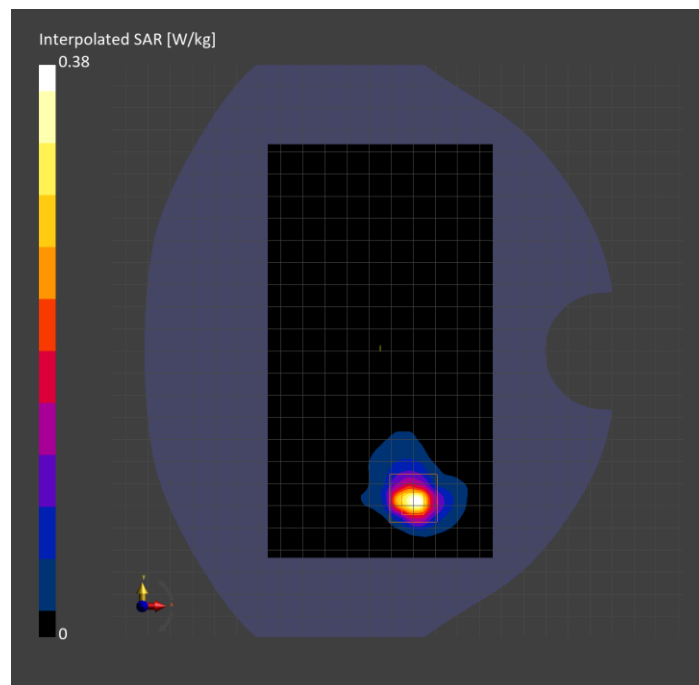
Probe   Calibration Date	EX3DV4 - SN7587   2024-04-15	Phantom	Twin-SAM V8.0 (30deg probe tilt)
DAE   Calibration Date	DAE4 Sn1797   2024-05-02	TSL Type	HBBL-600-10000
Software Version	16.2.4.2524		

## Scan Setup

	Area Scan	Zoom Scan
Grid Extents [mm]	102.0 x 187.0	22.0 x 22.0 x 22.0
Grid Steps [mm]	8.5 x 8.5	3.4 x 3.4 x 1.4
Sensor Surface [mm]	3.0	1.4
Graded Grid	N/A	Yes
M2/M1 [%]		53.0
Dist 3dB Peak [mm]		5.5
Peak SAR [W/kg]   SAR Peak Location [mm]	N/A	1.35   [-9.4, -69.3, -207.0]

## Measurement Results

	Area Scan	Zoom Scan	APD
psSAR1g [W/Kg]	0.246	<b>0.287</b>	N/A
psSAR8g [W/Kg]	0.080	<b>0.093</b>	N/A
psSAR10g [W/Kg]	0.069	<b>0.080</b>	N/A
psAPD (4.0cm <sup>2</sup> , sq.) [W/m <sup>2</sup> ]	N/A	N/A	<b>1.85</b>
Power Drift [dB]	N/A	0.10	0.10



# U-NII-8: IEEE 802.11ax (160MHz, MCS0, 99pc duty cycle), BACK

## Exposure Conditions

Band	U-NII-8	Phantom Section	5G
Frequency [MHz]   Channel Number	6985.0   207	Conversion Factor	1.0
Group   UID	WLAN, 10755-AAC	Position   Test Distance [mm]	BACK   2.00

## Hardware Setup

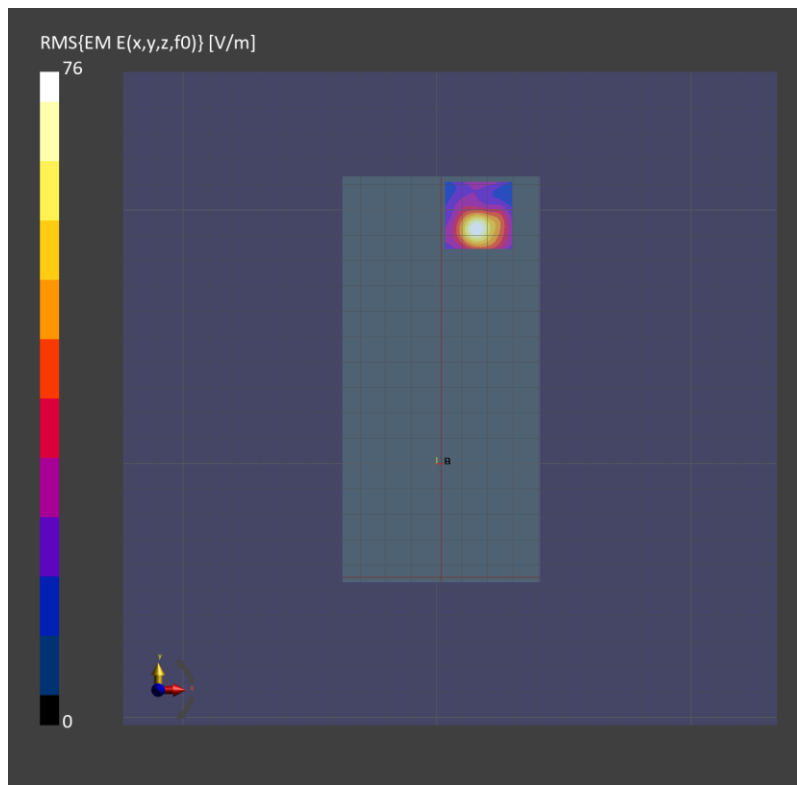
Probe   Calibration Date	EUmmWV4 - SN9619_F1-55GHz   2024-03-08	Phantom	mmWave   xxxx
DAE   Calibration Date	DAE4 Sn1472   2024-01-16	Medium	Air   -
Software Version	3.2.0.1840		

## Scan Setup

Scan Type	5G Scan	Grid Extents [mm]	25.0 x 25.0
Grid Steps [lambda]	0.041 x 0.041	Sensor Surface [mm]	2.0

## Measurement Results

Avg. Area [cm <sup>2</sup> ]	4.00
psPDn+ [W/m <sup>2</sup> ]	2.26
psPDtot+ [W/m <sup>2</sup> ]	3.56
psPDmod+ [W/m <sup>2</sup> ]	5.56
E <sub>max</sub> [V/m]	76.0
Power Drift [dB]	0.04



# U-NII-7: IEEE 802.11ax (160MHz, MCS0, 99pc duty cycle), BACK

## Exposure Conditions

Band	U-NII-7	Phantom Section	5G
Frequency [MHz]   Channel Number	6665.0   143	Conversion Factor	1.0
Group   UID	WLAN, 10755-AAC	Position   Test Distance [mm]	BACK   2.00

## Hardware Setup

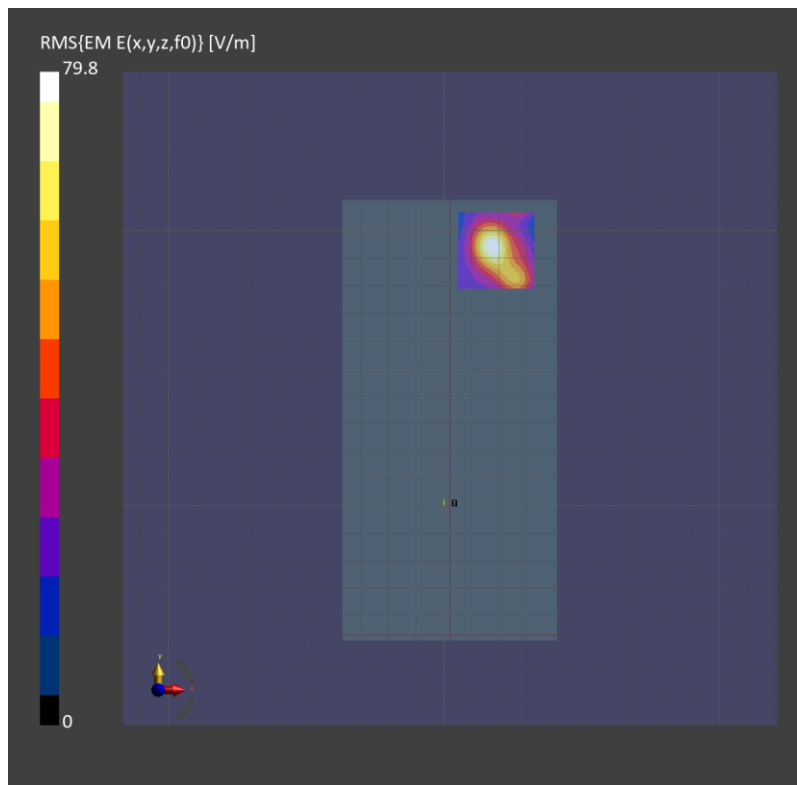
Probe   Calibration Date	EUmmWV4 - SN9619_F1-55GHz   2024-03-08	Phantom	mmWave   xxxx
DAE   Calibration Date	DAE4 Sn1472   2024-01-16	Medium	Air   -
Software Version	3.2.0.1840		

## Scan Setup

Scan Type	5G Scan	Grid Extents [mm]	25.0 x 25.0
Grid Steps [lambda]	0.041 x 0.041	Sensor Surface [mm]	2.0

## Measurement Results

Avg. Area [cm <sup>2</sup> ]	4.00
psPDn+ [W/m <sup>2</sup> ]	2.59
psPDtot+ [W/m <sup>2</sup> ]	3.32
psPDmod+ [W/m <sup>2</sup> ]	5.96
E <sub>max</sub> [V/m]	79.8
Power Drift [dB]	-0.89



# U-NII-5: IEEE 802.11ax (160MHz, MCS0, 99pc duty cycle), BACK

## Exposure Conditions

Band	U-NII-5	Phantom Section	5G
Frequency [MHz]   Channel Number	6345.0   79	Conversion Factor	1.0
Group   UID	WLAN, 10755-AAC	Position   Test Distance [mm]	BACK   2.00

## Hardware Setup

Probe   Calibration Date	EUmmWV4 - SN9619_F1-55GHz   2024-03-08	Phantom	mmWave   xxxx
DAE   Calibration Date	DAE4 Sn1472   2024-01-16	Medium	Air   -
Software Version	3.2.0.1840		

## Scan Setup

Scan Type	5G Scan	Grid Extents [mm]	25.0 x 25.0
Grid Steps [lambda]	0.041 x 0.041	Sensor Surface [mm]	2.0

## Measurement Results

Avg. Area [cm <sup>2</sup> ]	4.00
psPDn+ [W/m <sup>2</sup> ]	1.98
psPDtot+ [W/m <sup>2</sup> ]	3.26
psPDmod+ [W/m <sup>2</sup> ]	5.29
E <sub>max</sub> [V/m]	69.1
H <sub>max</sub> [A/m]	0.263
Power Drift [dB]	-0.04

