

# Measurement Report for GSM 850: GPRS-FDD (TDMA, GMSK, TN 0-1), BACK

## Exposure Conditions

Band	GSM 850	TSL Permittivity	41.4
Frequency [MHz]   Channel Number	836.600   190	TSL Conductivity [S/m]	0.874
Group   UID	GSM   10024-DAC	Phantom Section   TSL	Flat   HSL
Conversion Factor	8.76	Test Distance [mm]	5.00

## Hardware Setup

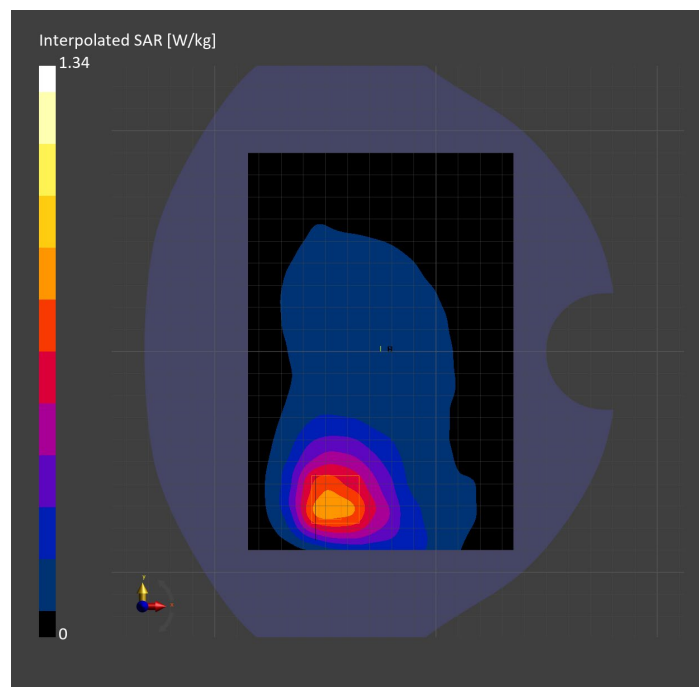
Probe   Calibration Date	EX3DV4 - SN7806   2023-04-04	Phantom	Twin-SAM V8.0 (30deg probe tilt)
DAE   Calibration Date	DAE4 Sn1784   2023-04-03	TSL Type	HBBL-600-10000
Software Version	16.2.4.2524		

## Scan Setup

	Area Scan	Zoom Scan
Grid Extents [mm]	120.0 x 180.0	30.0 x 30.0 x 30.0
Grid Steps [mm]	15.0 x 15.0	6.0 x 6.0 x 1.5
Sensor Surface [mm]	3.0	1.4
Graded Grid	N/A	Yes
M2/M1 [%]		81.0
Dist 3dB Peak [mm]		12.1

## Measurement Results

	Area Scan	Zoom Scan
psSAR1g [W/Kg]	0.749	<b>0.758</b>
psSAR10g [W/Kg]	0.484	<b>0.482</b>
Power Drift [dB]	N/A	-0.02



# Measurement Report for GSM 850: GPRS-FDD (TDMA, GMSK, TN 0-1), EDGE RIGHT

## Exposure Conditions

Band	GSM 850	TSL Permittivity	41.4
Frequency [MHz]   Channel Number	836.600   190	TSL Conductivity [S/m]	0.874
Group   UID	GSM   10024-DAC	Phantom Section   TSL	Flat   HSL
Conversion Factor	8.76	Test Distance [mm]	5.00

## Hardware Setup

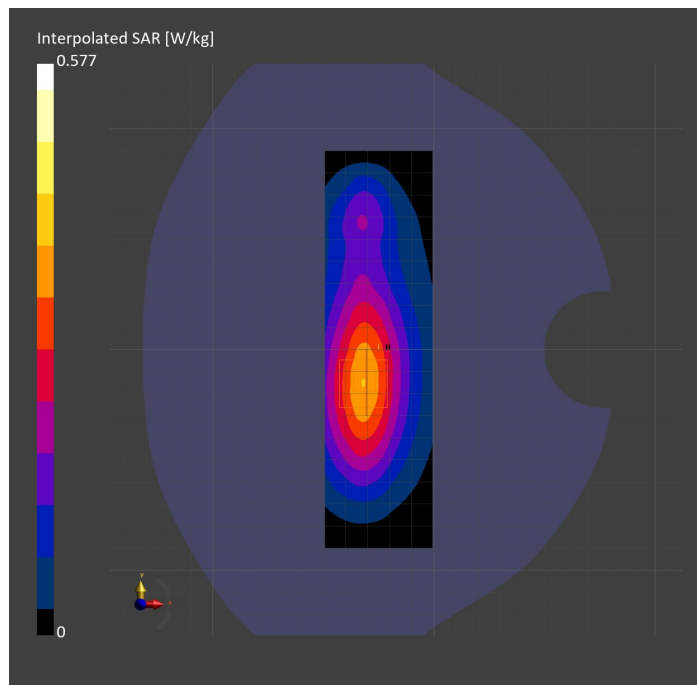
Probe   Calibration Date	EX3DV4 - SN7806   2023-04-04	Phantom	Twin-SAM V8.0 (30deg probe tilt)
DAE   Calibration Date	DAE4 Sn1784   2023-04-03	TSL Type	HBBL-600-10000
Software Version	16.2.4.2524		

## Scan Setup

	Area Scan	Zoom Scan
Grid Extents [mm]	48.6 x 180.0	30.0 x 30.0 x 30.0
Grid Steps [mm]	8.1 x 15.0	6.0 x 6.0 x 1.5
Sensor Surface [mm]	3.0	1.4
Graded Grid	N/A	Yes
M2/M1 [%]		81.6
Dist 3dB Peak [mm]		16.4

## Measurement Results

	Area Scan	Zoom Scan
psSAR1g [W/Kg]	0.332	<b>0.334</b>
psSAR10g [W/Kg]	0.216	<b>0.214</b>
Power Drift [dB]	N/A	-0.05



# Measurement Report for GSM 850: GPRS-FDD (TDMA, GMSK, TN 0-1), CHEEK

## Exposure Conditions

Band	GSM 850	TSL Permittivity	40.7
Frequency [MHz]   Channel Number	836.600   190	TSL Conductivity [S/m]	0.871
Group   UID	GSM   10024-DAC	Phantom Section   TSL	RightHead   HSL
Conversion Factor	7.83	Test Distance [mm]	0.00

## Hardware Setup

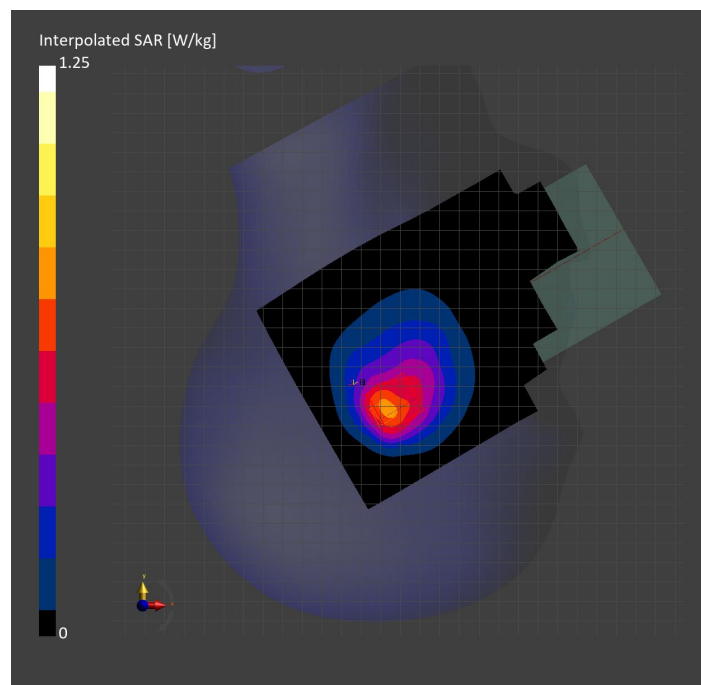
Probe   Calibration Date	EX3DV4 - SN3749   2023-01-27	Phantom	Twin-SAM V8.0 (30deg probe tilt)
DAE   Calibration Date	DAE4 Sn1357   2023-01-27	TSL Type	HBBL-600-10000
Software Version	16.2.4.2524		

## Scan Setup

	Area Scan	Zoom Scan
Grid Extents [mm]	120.0 x 210.0	30.0 x 30.0 x 30.0
Grid Steps [mm]	15.0 x 15.0	6.0 x 6.0 x 1.5
Sensor Surface [mm]	3.0	1.4
Graded Grid	N/A	Yes
M2/M1 [%]		75.4
Dist 3dB Peak [mm]		7.3

## Measurement Results

	Area Scan	Zoom Scan
psSAR1g [W/Kg]	0.645	<b>0.631</b>
psSAR10g [W/Kg]	0.410	<b>0.405</b>
Power Drift [dB]	N/A	-0.02



# Measurement Report for PCS 1900: GPRS-FDD (TDMA, GMSK, TN 0-1), BACK

## Exposure Conditions

Band	PCS 1900	TSL Permittivity	40.8
Frequency [MHz]   Channel Number	1850.200   512	TSL Conductivity [S/m]	1.34
Group   UID	GSM   10024-DAC	Phantom Section   TSL	Flat   HSL
Conversion Factor	8.43	Test Distance [mm]	5.00

## Hardware Setup

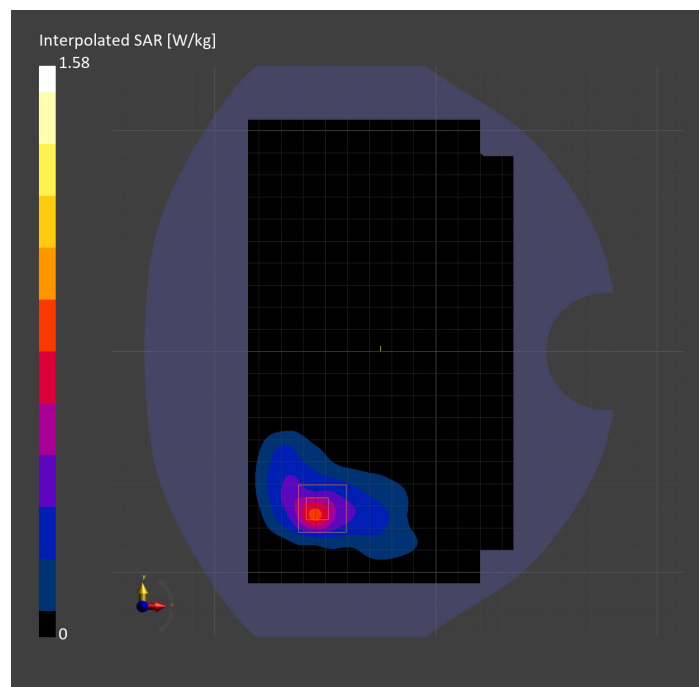
Probe   Calibration Date	EX3DV4 - SN3991   2022-09-22	Phantom	Twin-SAM V8.0 (30deg probe tilt)
DAE   Calibration Date	DAE4 Sn1674   2023-05-11	TSL Type	HBBL-600-10000
Software Version	16.2.4.2524		

## Scan Setup

	Area Scan	Zoom Scan
Grid Extents [mm]	120.0 x 210.0	30.0 x 30.0 x 30.0
Grid Steps [mm]	15.0 x 15.0	6.0 x 6.0 x 1.5
Sensor Surface [mm]	3.0	1.4
Graded Grid	N/A	Yes
M2/M1 [%]		78.4
Dist 3dB Peak [mm]		7.0

## Measurement Results

	Area Scan	Zoom Scan
psSAR1g [W/Kg]	0.614	<b>0.703</b>
psSAR10g [W/Kg]	0.304	<b>0.316</b>
Power Drift [dB]	N/A	0.05



# Measurement Report for PCS 1900: GPRS-FDD (TDMA, GMSK, TN 0-1), CHEEK

## Exposure Conditions

Band	PCS 1900	TSL Permittivity	40.3
Frequency [MHz]   Channel Number	1880.000   661	TSL Conductivity [S/m]	1.42
Group   UID	GSM   10024-DAC	Phantom Section   TSL	LeftHead   HSL
Conversion Factor	7.53	Test Distance [mm]	0.00

## Hardware Setup

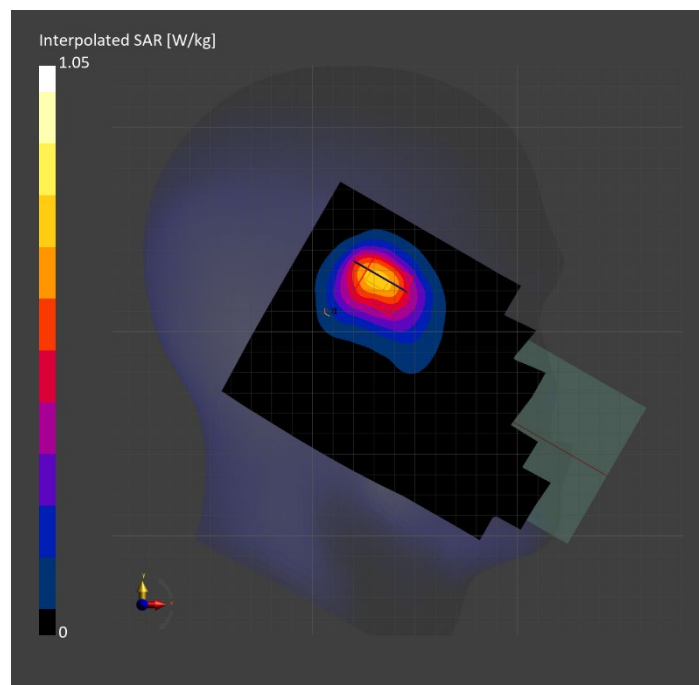
Probe   Calibration Date	EX3DV4 - SN7807   2023-04-11	Phantom	Twin-SAM V8.0 (30deg probe tilt)
DAE   Calibration Date	DAE4 Sn1799   2023-04-04	TSL Type	HBBL-600-10000
Software Version	16.2.4.2524		

## Scan Setup

	Area Scan	Zoom Scan
Grid Extents [mm]	120.0 x 210.0	30.0 x 30.0 x 30.0
Grid Steps [mm]	15.0 x 15.0	6.0 x 6.0 x 1.5
Sensor Surface [mm]	3.0	1.4
Graded Grid	N/A	Yes
M2/M1 [%]		86.5
Dist 3dB Peak [mm]		10.3

## Measurement Results

	Area Scan	Zoom Scan
psSAR1g [W/Kg]	0.597	<b>0.596</b>
psSAR10g [W/Kg]	0.334	<b>0.330</b>
Power Drift [dB]	N/A	-0.02



# Measurement Report for PCS 1900: GPRS-FDD (TDMA, GMSK, TN 0-1), EDGE RIGHT

## Exposure Conditions

Band	PCS 1900	TSL Permittivity	38.2
Frequency [MHz]   Channel Number	1880.000   661	TSL Conductivity [S/m]	1.39
Group   UID	GSM   10024-DAC	Phantom Section   TSL	Flat   HSL
Conversion Factor	7.53	Test Distance [mm]	5.00

## Hardware Setup

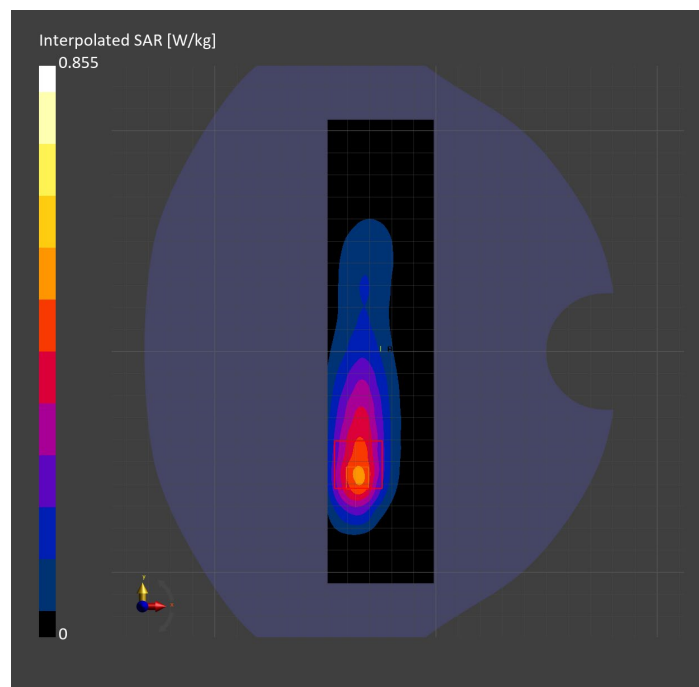
Probe   Calibration Date	EX3DV4 - SN7807   2023-04-11	Phantom	Twin-SAM V8.0 (30deg probe tilt)
DAE   Calibration Date	DAE4 Sn1799   2023-04-04	TSL Type	HBBL-600-10000
Software Version	16.2.4.2524		

## Scan Setup

	Area Scan	Zoom Scan
Grid Extents [mm]	48.0 x 210.0	30.0 x 30.0 x 30.0
Grid Steps [mm]	8.0 x 15.0	6.0 x 6.0 x 1.5
Sensor Surface [mm]	3.0	1.4
Graded Grid	N/A	Yes
M2/M1 [%]		75.7
Dist 3dB Peak [mm]		8.5

## Measurement Results

	Area Scan	Zoom Scan
psSAR1g [W/Kg]	0.413	<b>0.409</b>
psSAR10g [W/Kg]	0.216	<b>0.210</b>
Power Drift [dB]	N/A	0.01



# Measurement Report for Band 2: UMTS-FDD (WCDMA), CHEEK

## Exposure Conditions

Band	Band 2	TSL Permittivity	38.1
Frequency [MHz]   Channel Number	1907.600   9538	TSL Conductivity [S/m]	1.41
Group   UID	WCDMA   10011-CAC	Phantom Section   TSL	LeftHead   HSL
Conversion Factor	7.53	Test Distance [mm]	0.00

## Hardware Setup

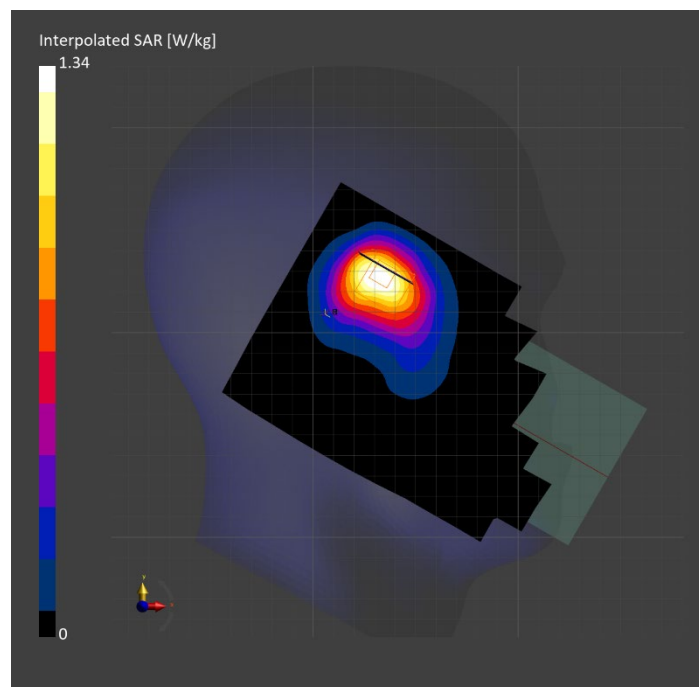
Probe   Calibration Date	EX3DV4 - SN7807   2023-04-11	Phantom	Twin-SAM V8.0 (30deg probe tilt)
DAE   Calibration Date	DAE4 Sn1799   2023-04-04	TSL Type	HBBL-600-10000
Software Version	16.2.4.2524		

## Scan Setup

	Area Scan	Zoom Scan
Grid Extents [mm]	120.0 x 210.0	30.0 x 30.0 x 30.0
Grid Steps [mm]	15.0 x 15.0	6.0 x 6.0 x 1.5
Sensor Surface [mm]	3.0	1.4
Graded Grid	N/A	Yes
M2/M1 [%]		79.2
Dist 3dB Peak [mm]		8.8

## Measurement Results

	Area Scan	Zoom Scan
psSAR1g [W/Kg]	0.707	<b>0.732</b>
psSAR10g [W/Kg]	0.402	<b>0.411</b>
Power Drift [dB]	N/A	0.01



# Measurement Report for Band 2: UMTS-FDD (WCDMA), BACK

## Exposure Conditions

Band	Band 2	TSL Permittivity	38.2
Frequency [MHz]   Channel Number	1880.000   9400	TSL Conductivity [S/m]	1.39
Group   UID	WCDMA   10011-CAC	Phantom Section   TSL	Flat   HSL
Conversion Factor	7.53	Test Distance [mm]	5.00

## Hardware Setup

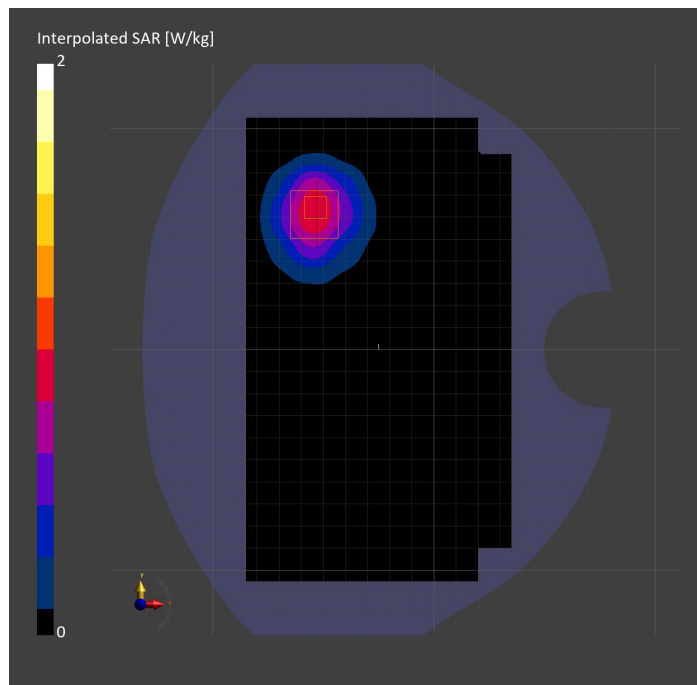
Probe   Calibration Date	EX3DV4 - SN7807   2023-04-11	Phantom	Twin-SAM V8.0 (30deg probe tilt)
DAE   Calibration Date	DAE4 Sn1799   2023-04-04	TSL Type	HBBL-600-10000
Software Version	16.2.4.2524		

## Scan Setup

	Area Scan	Zoom Scan
Grid Extents [mm]	120.0 x 210.0	30.0 x 30.0 x 30.0
Grid Steps [mm]	15.0 x 15.0	6.0 x 6.0 x 1.5
Sensor Surface [mm]	3.0	1.4
Graded Grid	N/A	Yes
M2/M1 [%]		69.7
Dist 3dB Peak [mm]		9.4

## Measurement Results

	Area Scan	Zoom Scan
psSAR1g [W/Kg]	0.831	<b>0.878</b>
psSAR10g [W/Kg]	0.467	<b>0.471</b>
Power Drift [dB]	N/A	0.00





# Measurement Report for Band 2: UMTS-FDD (WCDMA), EDGE RIGHT

## Exposure Conditions

Band	Band 2	TSL Permittivity	38.2
Frequency [MHz]   Channel Number	1880.000   9400	TSL Conductivity [S/m]	1.39
Group   UID	WCDMA   10011-CAC	Phantom Section   TSL	Flat   HSL
Conversion Factor	7.53	Test Distance [mm]	5.00

## Hardware Setup

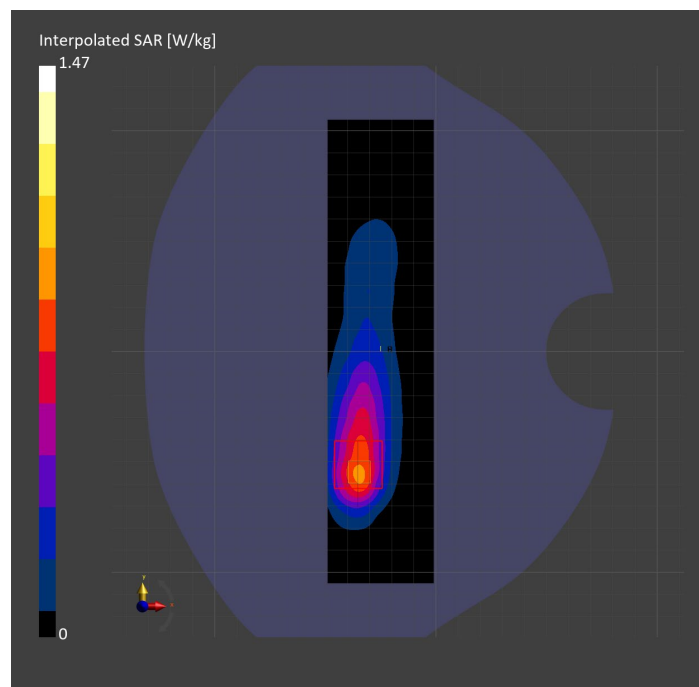
Probe   Calibration Date	EX3DV4 - SN7807   2023-04-11	Phantom	Twin-SAM V8.0 (30deg probe tilt)
DAE   Calibration Date	DAE4 Sn1799   2023-04-04	TSL Type	HBBL-600-10000
Software Version	16.2.4.2524		

## Scan Setup

	Area Scan	Zoom Scan
Grid Extents [mm]	48.0 x 210.0	30.0 x 30.0 x 30.0
Grid Steps [mm]	8.0 x 15.0	6.0 x 6.0 x 1.5
Sensor Surface [mm]	3.0	1.4
Graded Grid	N/A	Yes
M2/M1 [%]		79.1
Dist 3dB Peak [mm]		9.2

## Measurement Results

	Area Scan	Zoom Scan
psSAR1g [W/Kg]	0.708	<b>0.697</b>
psSAR10g [W/Kg]	0.368	<b>0.356</b>
Power Drift [dB]	N/A	0.00



# Measurement Report for Band 4: UMTS-FDD (WCDMA), EDGE BOTTOM

## Exposure Conditions

Band	Band 4	TSL Permittivity	40.1
Frequency [MHz]   Channel Number	1712.400   1312	TSL Conductivity [S/m]	1.29
Group   UID	WCDMA   10011-CAC	Phantom Section   TSL	Flat   HSL
Conversion Factor	8.98	Test Distance [mm]	5.00

## Hardware Setup

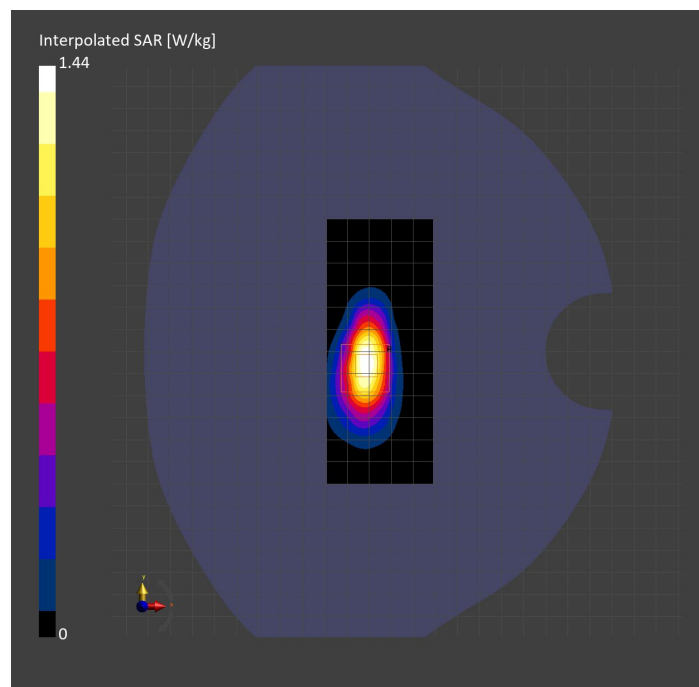
Probe   Calibration Date	EX3DV4 - SN3989   2023-01-26	Phantom	Twin-SAM V8.0 (30deg probe tilt)
DAE   Calibration Date	DAE4 Sn1257   2022-09-20	TSL Type	HBBL-600-10000
Software Version	16.2.4.2524		

## Scan Setup

	Area Scan	Zoom Scan
Grid Extents [mm]	48.0 x 120.0	30.0 x 30.0 x 30.0
Grid Steps [mm]	8.0 x 15.0	6.0 x 6.0 x 1.5
Sensor Surface [mm]	3.0	1.4
Graded Grid	N/A	Yes
M2/M1 [%]		81.4
Dist 3dB Peak [mm]		8.4

## Measurement Results

	Area Scan	Zoom Scan
psSAR1g [W/Kg]	0.753	<b>0.751</b>
psSAR10g [W/Kg]	0.375	<b>0.371</b>
Power Drift [dB]	N/A	-0.00



# Measurement Report for Band 4: UMTS-FDD (WCDMA), BACK

## Exposure Conditions

Band	Band 4	TSL Permittivity	40.0
Frequency [MHz]   Channel Number	1752.600   1513	TSL Conductivity [S/m]	1.32
Group   UID	WCDMA   10011-CAC	Phantom Section   TSL	Flat   HSL
Conversion Factor	8.98	Test Distance [mm]	5.00

## Hardware Setup

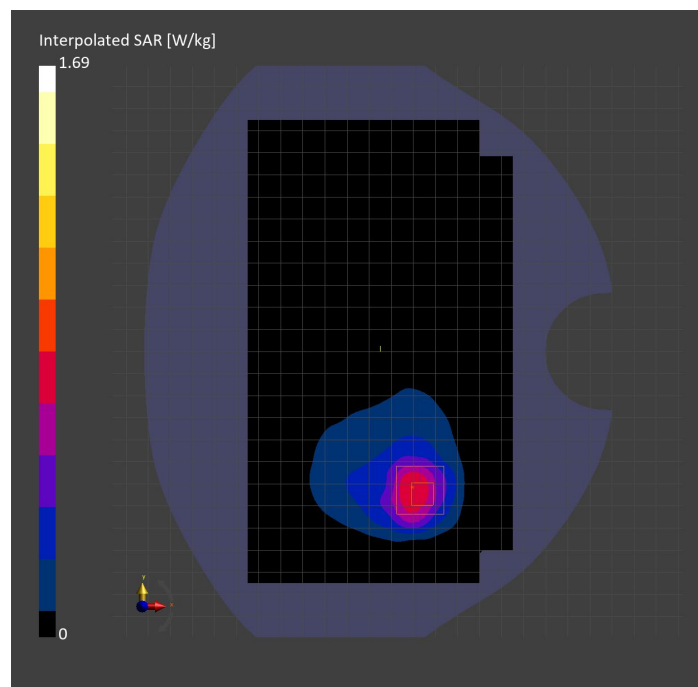
Probe   Calibration Date	EX3DV4 - SN3989   2023-01-26	Phantom	Twin-SAM V8.0 (30deg probe tilt)
DAE   Calibration Date	DAE4 Sn1257   2022-09-20	TSL Type	HBBL-600-10000
Software Version	16.2.4.2524		

## Scan Setup

	Area Scan	Zoom Scan
Grid Extents [mm]	120.0 x 210.0	30.0 x 30.0 x 30.0
Grid Steps [mm]	15.0 x 15.0	6.0 x 6.0 x 1.5
Sensor Surface [mm]	3.0	1.4
Graded Grid	N/A	Yes
M2/M1 [%]		81.3
Dist 3dB Peak [mm]		9.7

## Measurement Results

	Area Scan	Zoom Scan
psSAR1g [W/Kg]	0.700	<b>0.809</b>
psSAR10g [W/Kg]	0.385	<b>0.394</b>
Power Drift [dB]	N/A	0.03



# Measurement Report for Band 4: UMTS-FDD (WCDMA), CHEEK

## Exposure Conditions

Band	Band 4	TSL Permittivity	41.7
Frequency [MHz]   Channel Number	1732.600   1413	TSL Conductivity [S/m]	1.32
Group   UID	WCDMA   10011-CAC	Phantom Section   TSL	LeftHead   HSL
Conversion Factor	8.66	Test Distance [mm]	0.00

## Hardware Setup

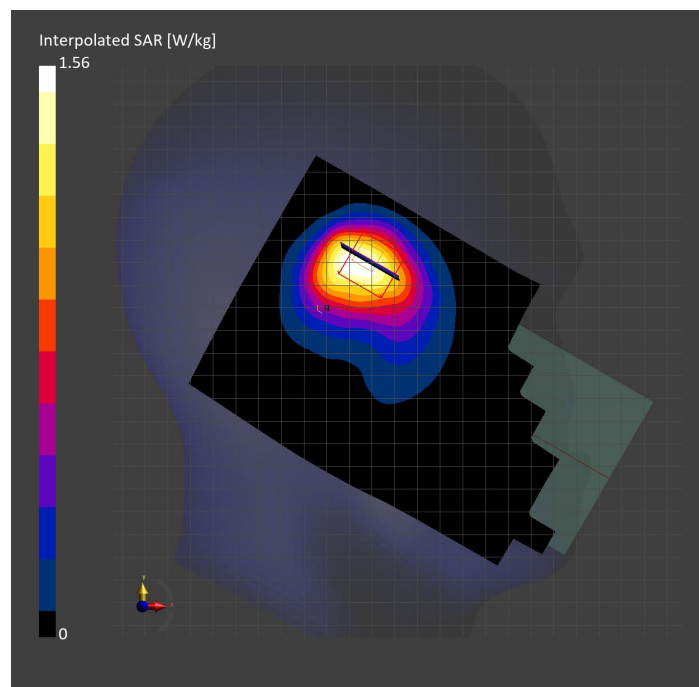
Probe   Calibration Date	EX3DV4 - SN7569   2023-04-18	Phantom	Twin-SAM V8.0 (30deg probe tilt)
DAE   Calibration Date	DAE4 Sn1547   2023-04-18	TSL Type	HBBL-600-10000
Software Version	16.2.4.2524		

## Scan Setup

	Area Scan	Zoom Scan
Grid Extents [mm]	120.0 x 210.0	30.0 x 30.0 x 30.0
Grid Steps [mm]	15.0 x 15.0	6.0 x 6.0 x 1.5
Sensor Surface [mm]	3.0	1.4
Graded Grid	N/A	Yes
M2/M1 [%]		74.7
Dist 3dB Peak [mm]		8.5

## Measurement Results

	Area Scan	Zoom Scan
psSAR1g [W/Kg]	0.745	<b>0.769</b>
psSAR10g [W/Kg]	0.440	<b>0.435</b>
Power Drift [dB]	N/A	0.01



# Measurement Report for Band 5: UMTS-FDD (WCDMA), BACK

## Exposure Conditions

Band	Band 5	TSL Permittivity	41.4
Frequency [MHz]   Channel Number	836.600   4183	TSL Conductivity [S/m]	0.874
Group   UID	WCDMA   10011-CAC	Phantom Section   TSL	Flat   HSL
Conversion Factor	8.76	Test Distance [mm]	5.00

## Hardware Setup

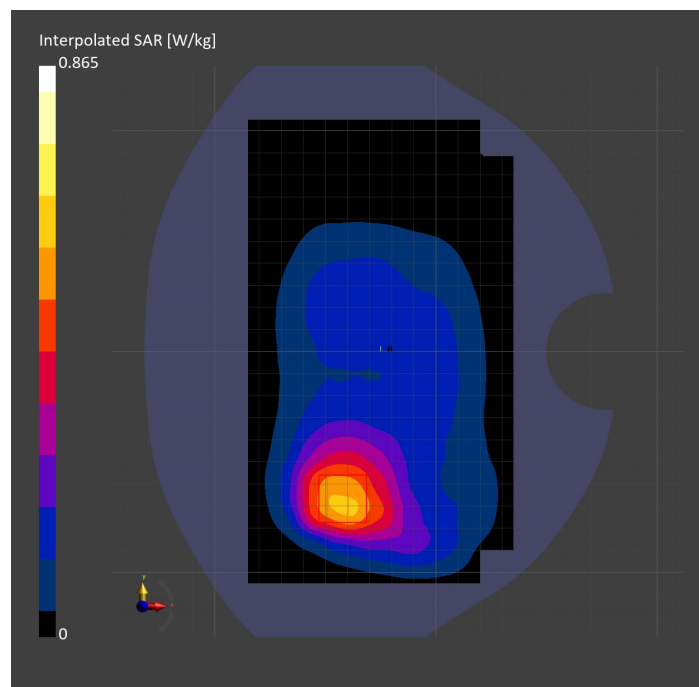
Probe   Calibration Date	EX3DV4 - SN7806   2023-04-04	Phantom	Twin-SAM V8.0 (30deg probe tilt)
DAE   Calibration Date	DAE4 Sn1784   2023-04-03	TSL Type	HBBL-600-10000
Software Version	16.2.4.2524		

## Scan Setup

	Area Scan	Zoom Scan
Grid Extents [mm]	120.0 x 210.0	30.0 x 30.0 x 30.0
Grid Steps [mm]	15.0 x 15.0	6.0 x 6.0 x 1.5
Sensor Surface [mm]	3.0	1.4
Graded Grid	N/A	Yes
M2/M1 [%]		83.2
Dist 3dB Peak [mm]		13.0

## Measurement Results

	Area Scan	Zoom Scan
psSAR1g [W/Kg]	0.528	<b>0.542</b>
psSAR10g [W/Kg]	0.349	<b>0.359</b>
Power Drift [dB]	N/A	-0.03



# Measurement Report for Band 5: UMTS-FDD (WCDMA), CHEEK

## Exposure Conditions

Band	Band 5	TSL Permittivity	40.6
Frequency [MHz]   Channel Number	826.400   4132	TSL Conductivity [S/m]	0.920
Group   UID	WCDMA   10011-CAC	Phantom Section   TSL	RightHead   HSL
Conversion Factor	7.83	Test Distance [mm]	0.00

## Hardware Setup

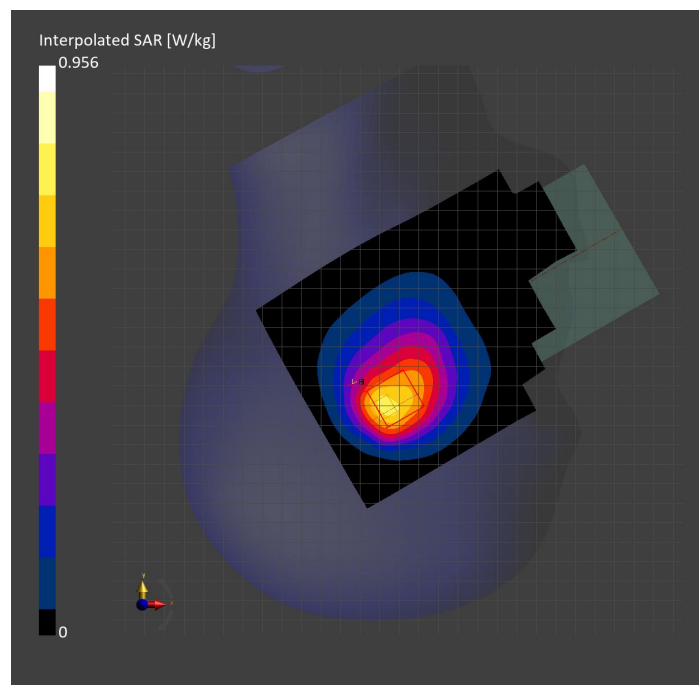
Probe   Calibration Date	EX3DV4 - SN3749   2023-01-27	Phantom	Twin-SAM V8.0 (30deg probe tilt)
DAE   Calibration Date	DAE4 Sn1357   2023-01-27	TSL Type	HBBL-600-10000
Software Version	16.2.4.2524		

## Scan Setup

	Area Scan	Zoom Scan
Grid Extents [mm]	120.0 x 210.0	30.0 x 30.0 x 30.0
Grid Steps [mm]	15.0 x 15.0	6.0 x 6.0 x 1.5
Sensor Surface [mm]	3.0	1.4
Graded Grid	N/A	Yes
M2/M1 [%]		86.9
Dist 3dB Peak [mm]		13.0

## Measurement Results

	Area Scan	Zoom Scan
psSAR1g [W/Kg]	0.642	<b>0.631</b>
psSAR10g [W/Kg]	0.420	<b>0.429</b>
Power Drift [dB]	N/A	0.05



# Measurement Report for Band 5: UMTS-FDD (WCDMA), EDGE LEFT

## Exposure Conditions

Band	Band 5	TSL Permittivity	40.6
Frequency [MHz]   Channel Number	836.600   4183	TSL Conductivity [S/m]	0.868
Group   UID	WCDMA   10011-CAC	Phantom Section   TSL	Flat   HSL
Conversion Factor	7.83	Test Distance [mm]	5.00

## Hardware Setup

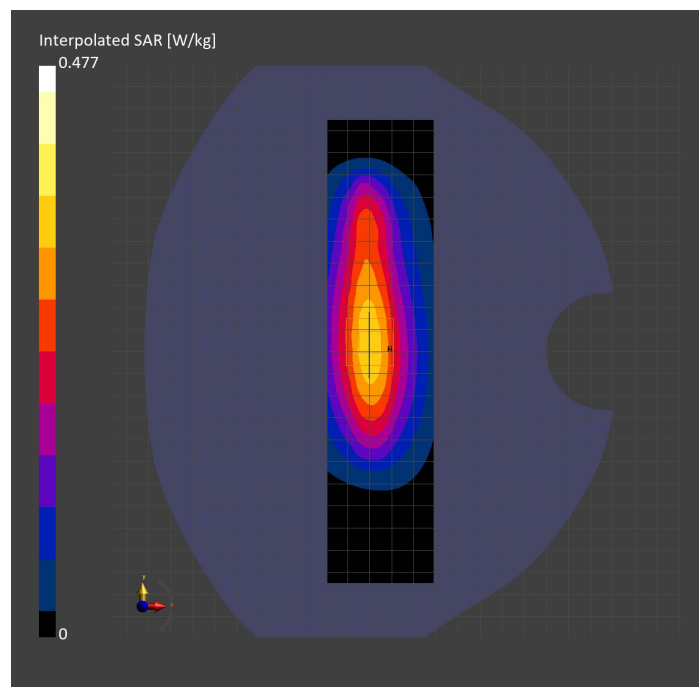
Probe   Calibration Date	EX3DV4 - SN3749   2023-01-27	Phantom	Twin-SAM V8.0 (30deg probe tilt)
DAE   Calibration Date	DAE4 Sn1357   2023-01-27	TSL Type	HBBL-600-10000
Software Version	16.2.4.2524		

## Scan Setup

	Area Scan	Zoom Scan
Grid Extents [mm]	48.0 x 210.0	30.0 x 30.0 x 30.0
Grid Steps [mm]	8.0 x 15.0	6.0 x 6.0 x 1.5
Sensor Surface [mm]	3.0	1.4
Graded Grid	N/A	Yes
M2/M1 [%]		86.3
Dist 3dB Peak [mm]		14.4

## Measurement Results

	Area Scan	Zoom Scan
psSAR1g [W/Kg]	0.301	<b>0.299</b>
psSAR10g [W/Kg]	0.195	<b>0.191</b>
Power Drift [dB]	N/A	-0.11



# Measurement Report for Band 5: LTE-FDD (SC-FDMA, 1 RB, 10 MHz, QPSK) RBPosition:Mid AntennaCfg:SISO, CHEEK

## Exposure Conditions

Band	Band 5	TSL Permittivity	40.7
Frequency [MHz]   Channel Number	836.500   20525	TSL Conductivity [S/m]	0.868
Group   UID	LTE-FDD   10175-CAH	Phantom Section   TSL	RightHead   HSL
Conversion Factor	7.83	Test Distance [mm]	0.00

## Hardware Setup

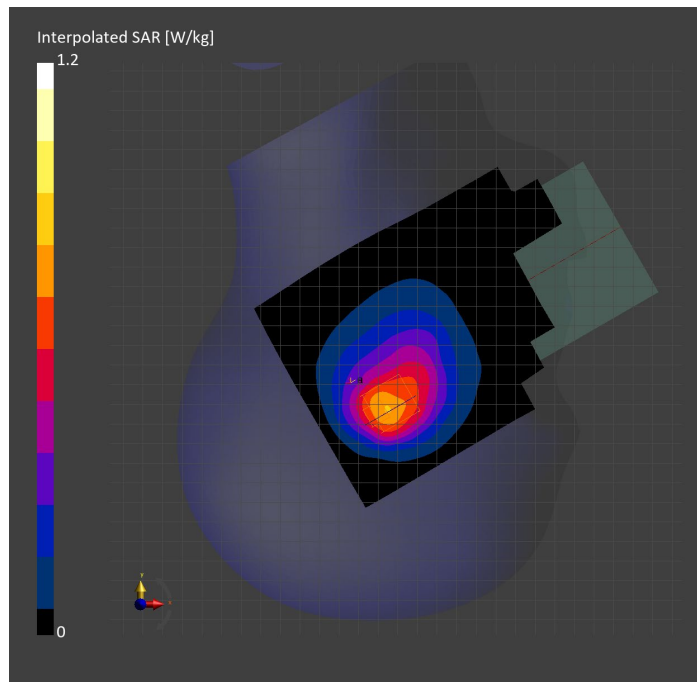
Probe   Calibration Date	EX3DV4 - SN3749   2023-01-27	Phantom	Twin-SAM V8.0 (30deg probe tilt)
DAE   Calibration Date	DAE4 Sn1357   2023-01-27	TSL Type	HBBL-600-10000
Software Version	16.2.4.2524		

## Scan Setup

	Area Scan	Zoom Scan
Grid Extents [mm]	120.0 x 210.0	30.0 x 30.0 x 30.0
Grid Steps [mm]	15.0 x 15.0	6.0 x 6.0 x 1.5
Sensor Surface [mm]	3.0	1.4
Graded Grid	N/A	Yes
M2/M1 [%]		83.1
Dist 3dB Peak [mm]		11.4

## Measurement Results

	Area Scan	Zoom Scan
psSAR1g [W/Kg]	0.683	<b>0.691</b>
psSAR10g [W/Kg]	0.445	<b>0.457</b>
Power Drift [dB]	N/A	-0.06





# Measurement Report for Band 5: LTE-FDD (SC-FDMA, 1 RB, 10 MHz, QPSK) RBPosition:Mid AntennaCfg:SISO, BACK

## Exposure Conditions

Band	Band 5	TSL Permittivity	41.4
Frequency [MHz]   Channel Number	836.500   20525	TSL Conductivity [S/m]	0.874
Group   UID	LTE-FDD   10175-CAH	Phantom Section   TSL	Flat   HSL
Conversion Factor	8.76	Test Distance [mm]	5.00

## Hardware Setup

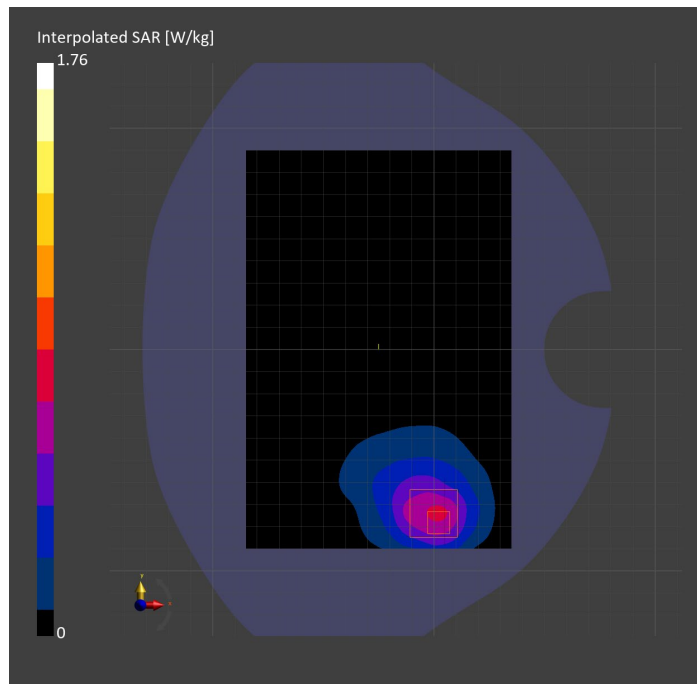
Probe   Calibration Date	EX3DV4 - SN7806   2023-04-04	Phantom	Twin-SAM V8.0 (30deg probe tilt)
DAE   Calibration Date	DAE4 Sn1784   2023-04-03	TSL Type	HBBL-600-10000
Software Version	16.2.4.2524		

## Scan Setup

	Area Scan	Zoom Scan
Grid Extents [mm]	120.0 x 180.0	30.0 x 30.0 x 30.0
Grid Steps [mm]	15.0 x 15.0	6.0 x 6.0 x 1.5
Sensor Surface [mm]	3.0	1.4
Graded Grid	N/A	Yes
M2/M1 [%]		65.9
Dist 3dB Peak [mm]		7.6

## Measurement Results

	Area Scan	Zoom Scan
psSAR1g [W/Kg]	0.650	<b>0.689</b>
psSAR10g [W/Kg]	0.409	<b>0.380</b>
Power Drift [dB]	N/A	-0.04



# Measurement Report for Band 5: LTE-FDD (SC-FDMA, 1 RB, 10 MHz, QPSK) RBPosition:Mid AntennaCfg:SISO, EDGE BOTTOM

## Exposure Conditions

Band	Band 5	TSL Permittivity	41.4
Frequency [MHz]   Channel Number	836.500   20525	TSL Conductivity [S/m]	0.874
Group   UID	LTE-FDD   10175-CAH	Phantom Section   TSL	Flat   HSL
Conversion Factor	8.76	Test Distance [mm]	5.00

## Hardware Setup

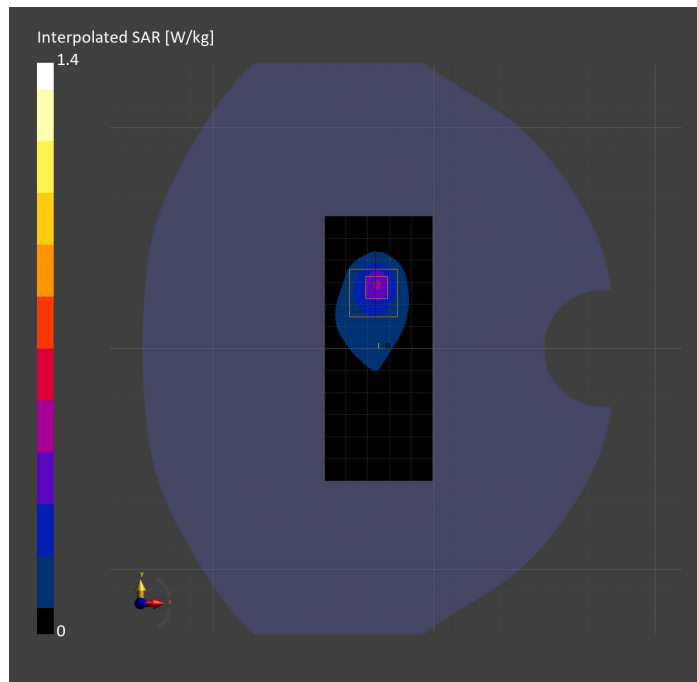
Probe   Calibration Date	EX3DV4 - SN7806   2023-04-04	Phantom	Twin-SAM V8.0 (30deg probe tilt)
DAE   Calibration Date	DAE4 Sn1784   2023-04-03	TSL Type	HBBL-600-10000
Software Version	16.2.4.2524		

## Scan Setup

	Area Scan	Zoom Scan
Grid Extents [mm]	48.6 x 120.0	30.0 x 30.0 x 30.0
Grid Steps [mm]	8.1 x 15.0	6.0 x 6.0 x 1.5
Sensor Surface [mm]	3.0	1.4
Graded Grid	N/A	Yes
M2/M1 [%]		57.0
Dist 3dB Peak [mm]		7.3

## Measurement Results

	Area Scan	Zoom Scan
psSAR1g [W/Kg]	0.358	<b>0.388</b>
psSAR10g [W/Kg]	0.186	<b>0.160</b>
Power Drift [dB]	N/A	0.04



# Measurement Report for Band 7: LTE-FDD (SC-FDMA, 50% RB, 20 MHz, QPSK) RBPosition:Mid AntennaCfg:SISO, EDGE RIGHT

## Exposure Conditions

Band	Band 7	TSL Permittivity	40.3
Frequency [MHz]   Channel Number	2510.000   20850	TSL Conductivity [S/m]	1.82
Group   UID	LTE-FDD   10297-AAE	Phantom Section   TSL	Flat   HSL
Conversion Factor	7.33	Test Distance [mm]	5.00

## Hardware Setup

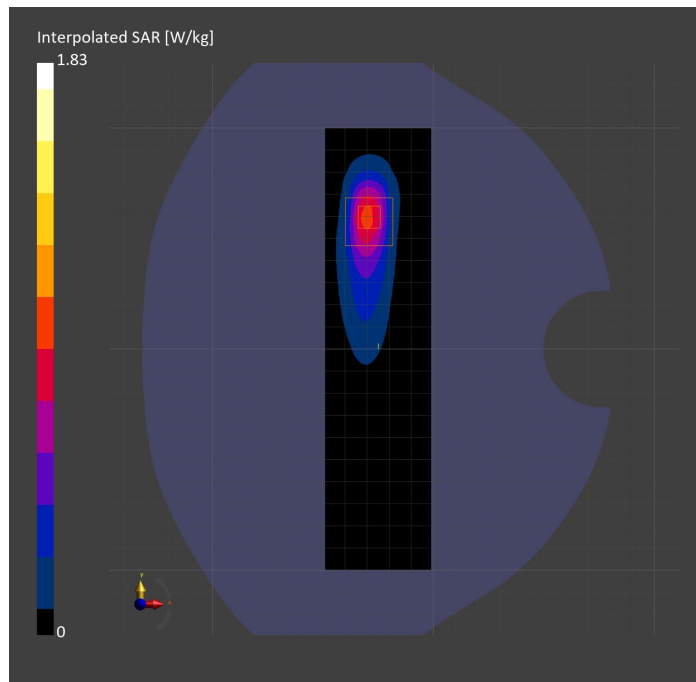
Probe   Calibration Date	EX3DV4 - SN7808   2023-04-18	Phantom	Twin-SAM V8.0 (30deg probe tilt)
DAE   Calibration Date	DAE4 Sn1796   2023-04-03	TSL Type	HBBL-600-10000
Software Version	16.2.4.2524		

## Scan Setup

	Area Scan	Zoom Scan
Grid Extents [mm]	48.0 x 200.0	30.0 x 30.0 x 30.0
Grid Steps [mm]	8.0 x 10.0	5.0 x 5.0 x 1.5
Sensor Surface [mm]	3.0	1.4
Graded Grid	N/A	Yes
M2/M1 [%]		74.5
Dist 3dB Peak [mm]		7.0

## Measurement Results

	Area Scan	Zoom Scan
psSAR1g [W/Kg]	0.739	<b>0.770</b>
psSAR10g [W/Kg]	0.327	<b>0.331</b>
Power Drift [dB]	N/A	-0.01



# Measurement Report for Band 7: LTE-FDD (SC-FDMA, 50% RB, 20 MHz, QPSK) RBPosition:Mid AntennaCfg:SISO, BACK

## Exposure Conditions

Band	Band 7	TSL Permittivity	37.4
Frequency [MHz]   Channel Number	2560.000   21350	TSL Conductivity [S/m]	1.89
Group   UID	LTE-FDD   10297-AAE	Phantom Section   TSL	Flat   HSL
Conversion Factor	7.32	Test Distance [mm]	5.00

## Hardware Setup

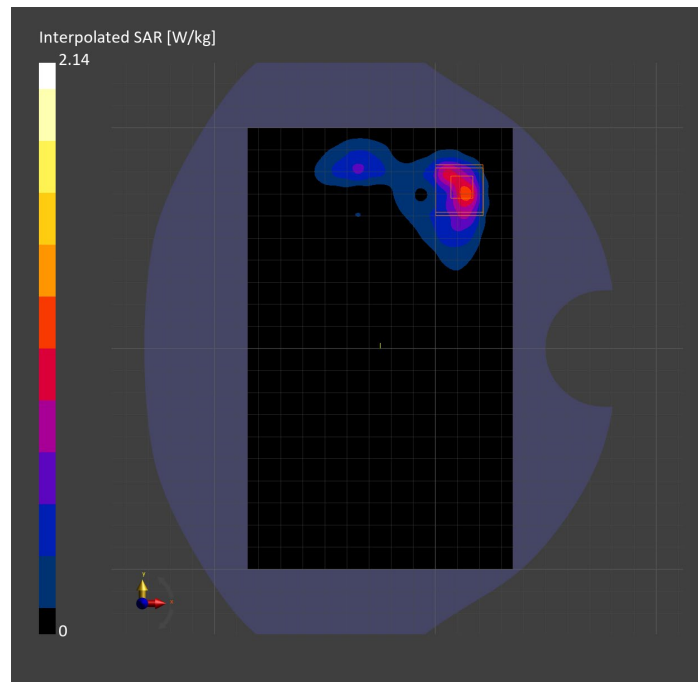
Probe   Calibration Date	EX3DV4 - SN3885   2022-09-20	Phantom	Twin-SAM V5.0 (30deg probe tilt)
DAE   Calibration Date	DAE4 Sn1548   2023-02-14	TSL Type	HBBL-600-10000
Software Version	16.2.4.2524		

## Scan Setup

	Area Scan	Zoom Scan
Grid Extents [mm]	120.0 x 200.0	30.0 x 30.0 x 30.0
Grid Steps [mm]	10.0 x 10.0	5.0 x 5.0 x 1.5
Sensor Surface [mm]	3.0	1.4
Graded Grid	N/A	Yes
M2/M1 [%]		77.9
Dist 3dB Peak [mm]		5.9

## Measurement Results

	Area Scan	Zoom Scan
psSAR1g [W/Kg]	0.822	<b>0.884</b>
psSAR10g [W/Kg]	0.363	<b>0.339</b>
Power Drift [dB]	N/A	-0.01



# Measurement Report for Band 7: LTE-FDD (SC-FDMA, 1 RB, 20 MHz, QPSK) RBPosition:Mid AntennaCfg:SISO, CHEEK

## Exposure Conditions

Band	Band 7	TSL Permittivity	38.0
Frequency [MHz]   Channel Number	2560.000   21350	TSL Conductivity [S/m]	1.93
Group   UID	LTE-FDD   10169-CAF	Phantom Section   TSL	LeftHead   HSL
Conversion Factor	7.32	Test Distance [mm]	0.00

## Hardware Setup

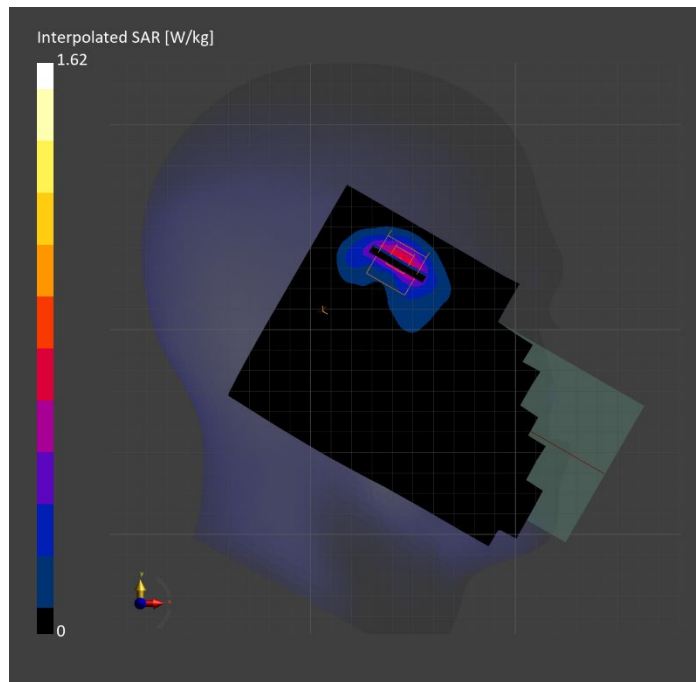
Probe   Calibration Date	EX3DV4 - SN3885   2022-09-20	Phantom	Twin-SAM V5.0 (30deg probe tilt)
DAE   Calibration Date	DAE4 Sn1548   2023-02-14	TSL Type	HBBL-600-10000
Software Version	16.2.4.2524		

## Scan Setup

	Area Scan	Zoom Scan
Grid Extents [mm]	120.0 x 200.0	30.0 x 30.0 x 30.0
Grid Steps [mm]	10.0 x 10.0	5.0 x 5.0 x 1.5
Sensor Surface [mm]	3.0	1.4
Graded Grid	N/A	Yes
M2/M1 [%]		73.0
Dist 3dB Peak [mm]		6.1

## Measurement Results

	Area Scan	Zoom Scan
psSAR1g [W/Kg]	0.588	<b>0.686</b>
psSAR10g [W/Kg]	0.260	<b>0.284</b>
Power Drift [dB]	N/A	0.02



# Measurement Report for Band 12: LTE-FDD (SC-FDMA, 1 RB, 10 MHz, QPSK) RBPosition:Mid AntennaCfg:SISO, EDGE RIGHT

## Exposure Conditions

Band	Band 12	TSL Permittivity	42.1
Frequency [MHz]   Channel Number	707.500   23095	TSL Conductivity [S/m]	0.863
Group   UID	LTE-FDD   10175-CAH	Phantom Section   TSL	Flat   HSL
Conversion Factor	10.62	Test Distance [mm]	5.00

## Hardware Setup

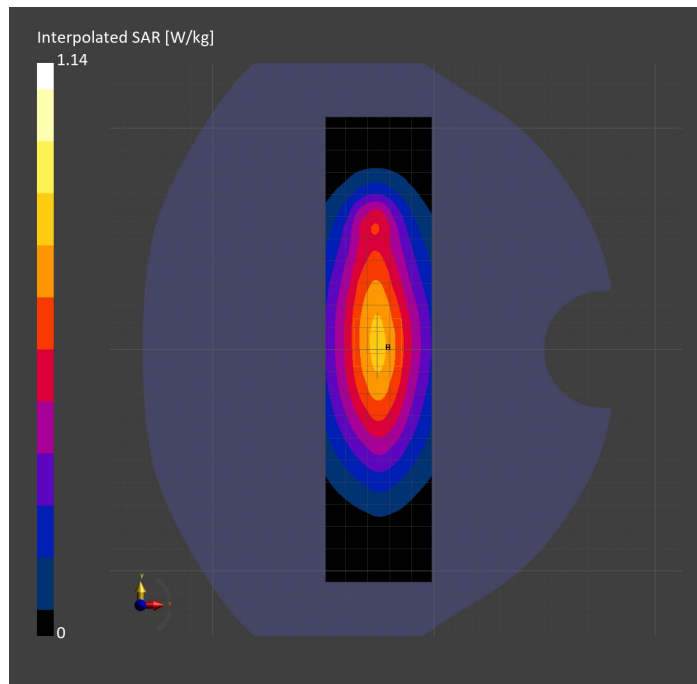
Probe   Calibration Date	EX3DV4 - SN7589   2023-04-18	Phantom	Twin-SAM V5.0 (30deg probe tilt)
DAE   Calibration Date	DAE4 Sn1544   2023-01-24	TSL Type	HBBL-600-10000
Software Version	16.2.4.2524		

## Scan Setup

	Area Scan	Zoom Scan
Grid Extents [mm]	48.0 x 210.0	30.0 x 30.0 x 30.0
Grid Steps [mm]	8.0 x 15.0	6.0 x 6.0 x 1.5
Sensor Surface [mm]	3.0	1.4
Graded Grid	N/A	Yes
M2/M1 [%]		83.1
Dist 3dB Peak [mm]		> 15.0

## Measurement Results

	Area Scan	Zoom Scan
psSAR1g [W/Kg]	0.690	<b>0.700</b>
psSAR10g [W/Kg]	0.463	<b>0.471</b>
Power Drift [dB]	N/A	0.02



# Measurement Report for Band 12: LTE-FDD (SC-FDMA, 1 RB, 10 MHz, QPSK) RBPosition:Mid AntennaCfg:SISO, CHEEK

## Exposure Conditions

Band	Band 12	TSL Permittivity	41.0
Frequency [MHz]   Channel Number	707.500   23095	TSL Conductivity [S/m]	0.860
Group   UID	LTE-FDD   10175-CAH	Phantom Section   TSL	RightHead   HSL
Conversion Factor	8.93	Test Distance [mm]	0.00

## Hardware Setup

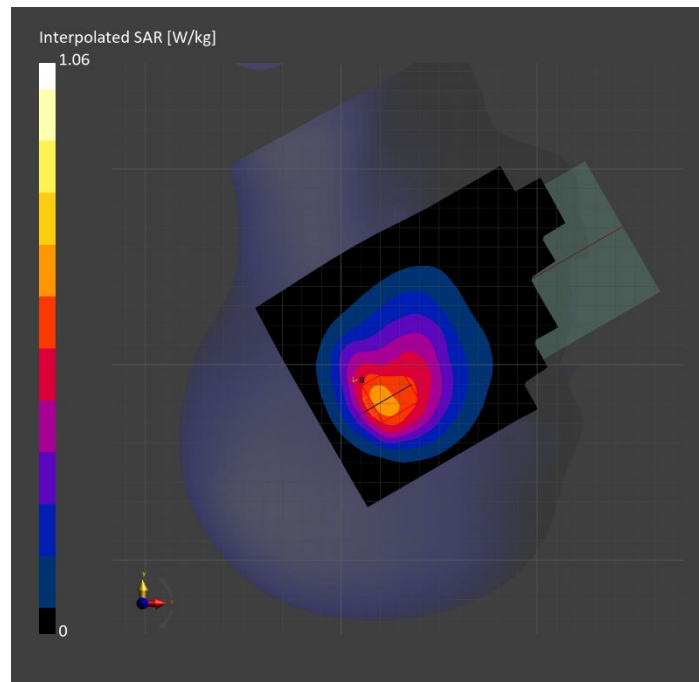
Probe   Calibration Date	EX3DV4 - SN7448   2023-02-14	Phantom	Twin-SAM V5.0 (30deg probe tilt)
DAE   Calibration Date	DAE4 Sn1472   2023-01-23	TSL Type	HBBL-600-10000
Software Version	16.2.4.2524		

## Scan Setup

	Area Scan	Zoom Scan
Grid Extents [mm]	120.0 x 210.0	30.0 x 30.0 x 30.0
Grid Steps [mm]	15.0 x 15.0	6.0 x 6.0 x 1.5
Sensor Surface [mm]	3.0	1.4
Graded Grid	N/A	Yes
M2/M1 [%]		78.5
Dist 3dB Peak [mm]		11.1

## Measurement Results

	Area Scan	Zoom Scan
psSAR1g [W/Kg]	0.583	<b>0.563</b>
psSAR10g [W/Kg]	0.387	<b>0.375</b>
Power Drift [dB]	N/A	-0.05



# Measurement Report for Band 12: LTE-FDD (SC-FDMA, 1 RB, 10 MHz, QPSK) RBPosition:Mid AntennaCfg:SISO, BACK

## Exposure Conditions

Band	Band 12	TSL Permittivity	41.6
Frequency [MHz]   Channel Number	707.500   23095	TSL Conductivity [S/m]	0.897
Group   UID	LTE-FDD   10175-CAH	Phantom Section   TSL	Flat   HSL
Conversion Factor	8.93	Test Distance [mm]	5.00

## Hardware Setup

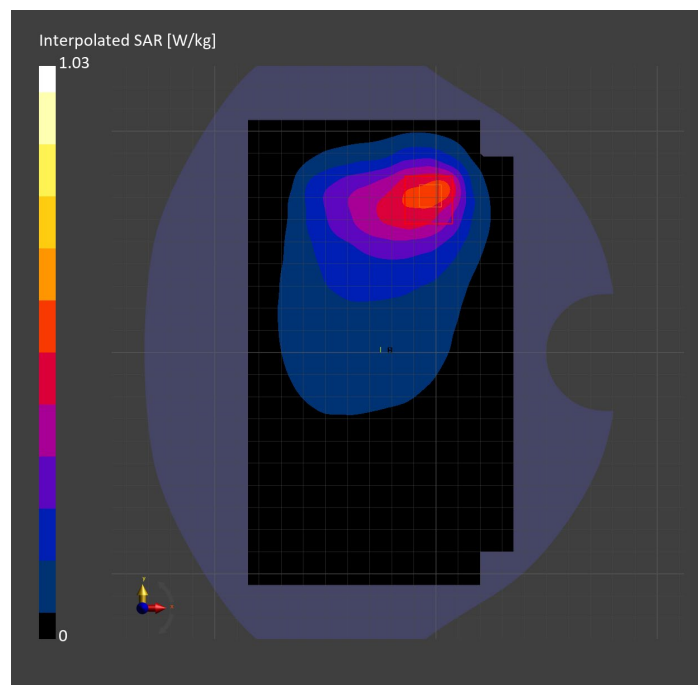
Probe   Calibration Date	EX3DV4 - SN7448   2023-02-14	Phantom	Twin-SAM V5.0 (30deg probe tilt)
DAE   Calibration Date	DAE4 Sn1472   2023-01-23	TSL Type	HBBL-600-10000
Software Version	16.2.4.2524		

## Scan Setup

	Area Scan	Zoom Scan
Grid Extents [mm]	120.0 x 210.0	30.0 x 30.0 x 30.0
Grid Steps [mm]	15.0 x 15.0	6.0 x 6.0 x 1.5
Sensor Surface [mm]	3.0	1.4
Graded Grid	N/A	Yes
M2/M1 [%]		73.5
Dist 3dB Peak [mm]		10.3

## Measurement Results

	Area Scan	Zoom Scan
psSAR1g [W/Kg]	0.496	<b>0.487</b>
psSAR10g [W/Kg]	0.327	<b>0.278</b>
Power Drift [dB]	N/A	-0.01





# Measurement Report for Band 13: LTE-FDD (SC-FDMA, 1 RB, 10 MHz, QPSK) RBPosition:Mid AntennaCfg:SISO, EDGE RIGHT

## Exposure Conditions

Band	Band 13	TSL Permittivity	41.9
Frequency [MHz]   Channel Number	782.000   23230	TSL Conductivity [S/m]	0.888
Group   UID	LTE-FDD   10175-CAH	Phantom Section   TSL	Flat   HSL
Conversion Factor	10.62	Test Distance [mm]	5.00

## Hardware Setup

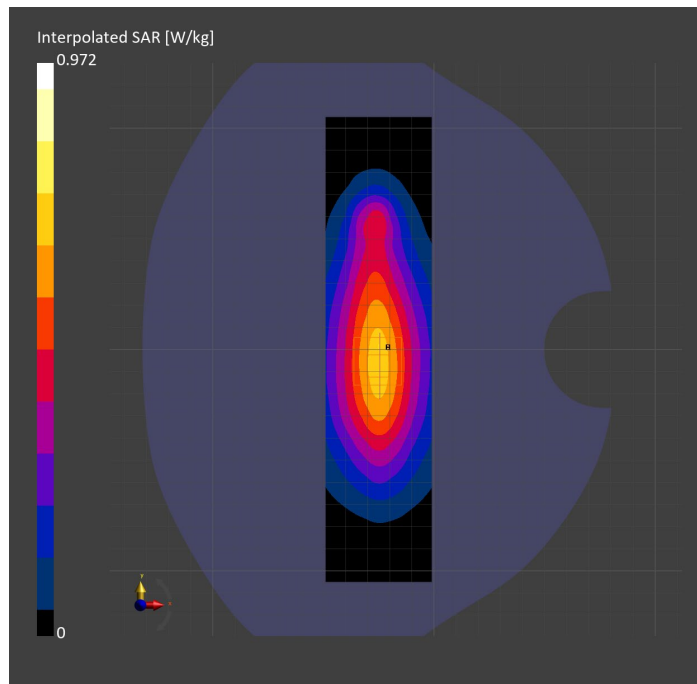
Probe   Calibration Date	EX3DV4 - SN7589   2023-04-18	Phantom	Twin-SAM V5.0 (30deg probe tilt)
DAE   Calibration Date	DAE4 Sn1544   2023-01-24	TSL Type	HBBL-600-10000
Software Version	16.2.4.2524		

## Scan Setup

	Area Scan	Zoom Scan
Grid Extents [mm]	48.0 x 210.0	30.0 x 30.0 x 30.0
Grid Steps [mm]	8.0 x 15.0	6.0 x 6.0 x 1.5
Sensor Surface [mm]	3.0	1.4
Graded Grid	N/A	Yes
M2/M1 [%]		84.7
Dist 3dB Peak [mm]		> 15.0

## Measurement Results

	Area Scan	Zoom Scan
psSAR1g [W/Kg]	0.603	<b>0.609</b>
psSAR10g [W/Kg]	0.400	<b>0.405</b>
Power Drift [dB]	N/A	-0.01



# Measurement Report for Band 13: LTE-FDD (SC-FDMA, 1 RB, 10 MHz, QPSK) RBPosition:Mid AntennaCfg:SISO, CHEEK

## Exposure Conditions

Band	Band 13	TSL Permittivity	41.2
Frequency [MHz]   Channel Number	782.000   23230	TSL Conductivity [S/m]	0.886
Group   UID	LTE-FDD   10175-CAH	Phantom Section   TSL	RightHead   HSL
Conversion Factor	10.62	Test Distance [mm]	0.00

## Hardware Setup

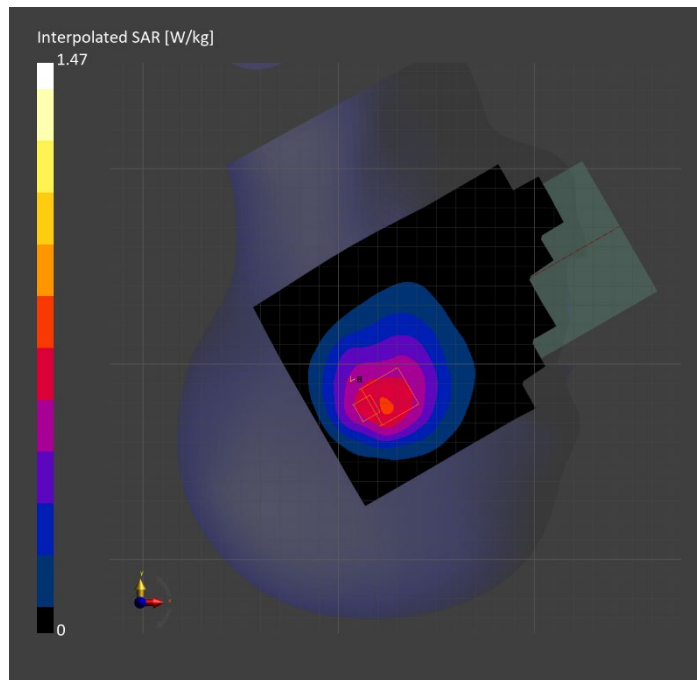
Probe   Calibration Date	EX3DV4 - SN7589   2023-04-18	Phantom	Twin-SAM V5.0 (30deg probe tilt)
DAE   Calibration Date	DAE4 Sn1544   2023-01-24	TSL Type	HBBL-600-10000
Software Version	16.2.4.2524		

## Scan Setup

	Area Scan	Zoom Scan
Grid Extents [mm]	120.0 x 210.0	30.0 x 30.0 x 30.0
Grid Steps [mm]	15.0 x 15.0	6.0 x 6.0 x 1.5
Sensor Surface [mm]	3.0	1.4
Graded Grid	N/A	Yes
M2/M1 [%]		72.4
Dist 3dB Peak [mm]		8.7

## Measurement Results

	Area Scan	Zoom Scan
psSAR1g [W/Kg]	0.646	<b>0.672</b>
psSAR10g [W/Kg]	0.438	<b>0.443</b>
Power Drift [dB]	N/A	-0.05



# Measurement Report for Band 13: LTE-FDD (SC-FDMA, 1 RB, 10 MHz, QPSK) RBPosition:Mid AntennaCfg:SISO, BACK

## Exposure Conditions

Band	Band 13	TSL Permittivity	41.5
Frequency [MHz]   Channel Number	782.000   23230	TSL Conductivity [S/m]	0.924
Group   UID	LTE-FDD   10175-CAH	Phantom Section   TSL	Flat   HSL
Conversion Factor	8.93	Test Distance [mm]	5.00

## Hardware Setup

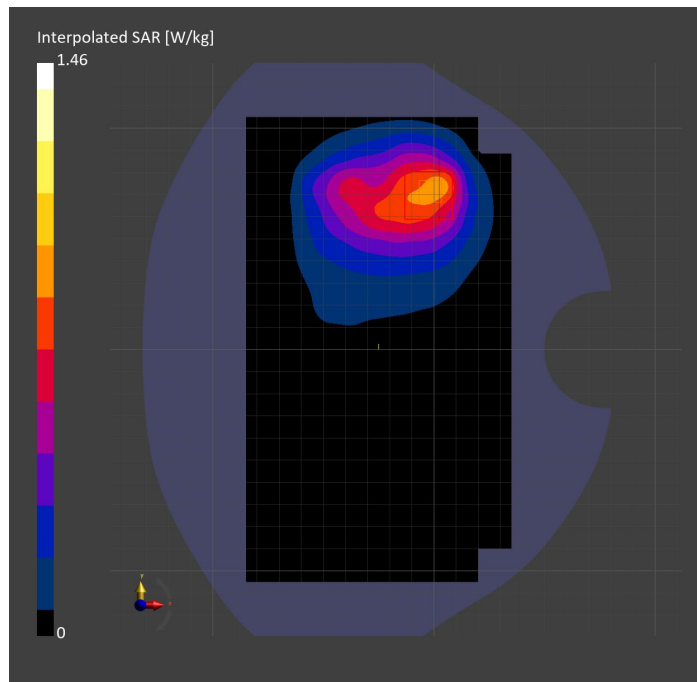
Probe   Calibration Date	EX3DV4 - SN7448   2023-02-14	Phantom	Twin-SAM V5.0 (30deg probe tilt)
DAE   Calibration Date	DAE4 Sn1472   2023-01-23	TSL Type	HBBL-600-10000
Software Version	16.2.4.2524		

## Scan Setup

	Area Scan	Zoom Scan
Grid Extents [mm]	120.0 x 210.0	30.0 x 30.0 x 30.0
Grid Steps [mm]	15.0 x 15.0	6.0 x 6.0 x 1.5
Sensor Surface [mm]	3.0	1.4
Graded Grid	N/A	Yes
M2/M1 [%]		82.8
Dist 3dB Peak [mm]		13.0

## Measurement Results

	Area Scan	Zoom Scan
psSAR1g [W/Kg]	0.807	<b>0.797</b>
psSAR10g [W/Kg]	0.530	<b>0.464</b>
Power Drift [dB]	N/A	-0.02



# Measurement Report for Band 14: LTE-FDD (SC-FDMA, 1 RB, 10 MHz, QPSK) RBPosition:Mid AntennaCfg:SISO, EDGE RIGHT

## Exposure Conditions

Band	Band 14	TSL Permittivity	41.8
Frequency [MHz]   Channel Number	793.000   23330	TSL Conductivity [S/m]	0.892
Group   UID	LTE-FDD   10175-CAH	Phantom Section   TSL	Flat   HSL
Conversion Factor	10.62	Test Distance [mm]	5.00

## Hardware Setup

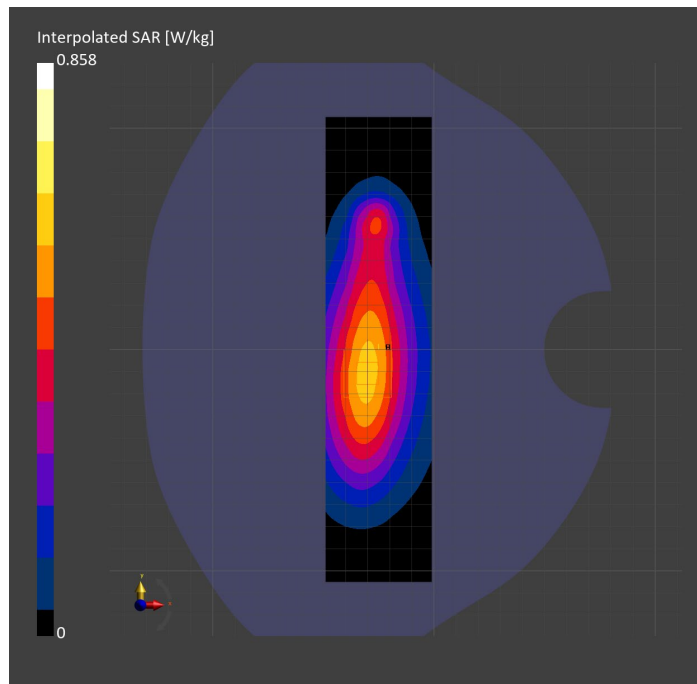
Probe   Calibration Date	EX3DV4 - SN7589   2023-04-18	Phantom	Twin-SAM V5.0 (30deg probe tilt)
DAE   Calibration Date	DAE4 Sn1544   2023-01-24	TSL Type	HBBL-600-10000
Software Version	16.2.4.2524		

## Scan Setup

	Area Scan	Zoom Scan
Grid Extents [mm]	48.0 x 210.0	30.0 x 30.0 x 30.0
Grid Steps [mm]	8.0 x 15.0	6.0 x 6.0 x 1.5
Sensor Surface [mm]	3.0	1.4
Graded Grid	N/A	Yes
M2/M1 [%]		84.7
Dist 3dB Peak [mm]		16.4

## Measurement Results

	Area Scan	Zoom Scan
psSAR1g [W/Kg]	0.528	<b>0.534</b>
psSAR10g [W/Kg]	0.350	<b>0.352</b>
Power Drift [dB]	N/A	-0.01



# Measurement Report for Band 14: LTE-FDD (SC-FDMA, 50% RB, 10 MHz, QPSK) RBPosition:Mid AntennaCfg:SISO, CHEEK

## Exposure Conditions

Band	Band 14	TSL Permittivity	41.2
Frequency [MHz]   Channel Number	793.000   23330	TSL Conductivity [S/m]	0.889
Group   UID	LTE-FDD   10154-CAH	Phantom Section   TSL	RightHead   HSL
Conversion Factor	10.62	Test Distance [mm]	0.00

## Hardware Setup

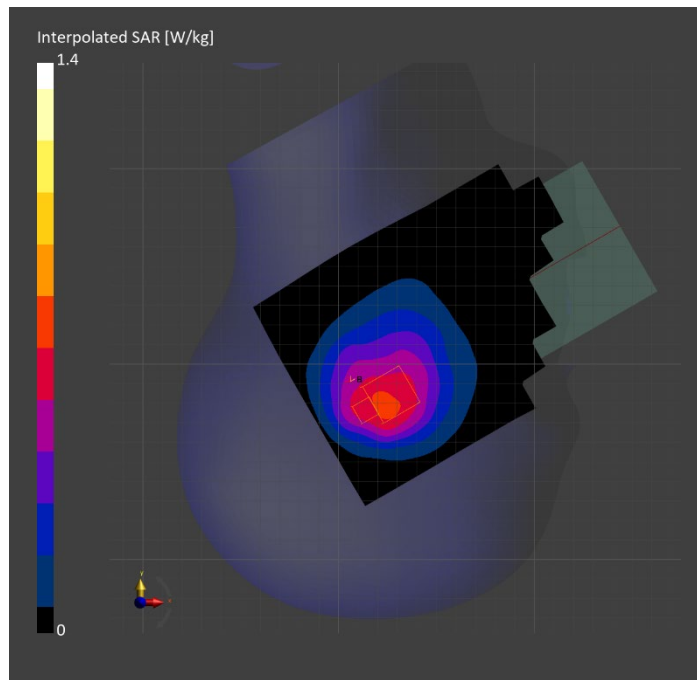
Probe   Calibration Date	EX3DV4 - SN7589   2023-04-18	Phantom	Twin-SAM V5.0 (30deg probe tilt)
DAE   Calibration Date	DAE4 Sn1544   2023-01-24	TSL Type	HBBL-600-10000
Software Version	16.2.4.2524		

## Scan Setup

	Area Scan	Zoom Scan
Grid Extents [mm]	120.0 x 210.0	30.0 x 30.0 x 30.0
Grid Steps [mm]	15.0 x 15.0	6.0 x 6.0 x 1.5
Sensor Surface [mm]	3.0	1.4
Graded Grid	N/A	Yes
M2/M1 [%]		73.5
Dist 3dB Peak [mm]		9.4

## Measurement Results

	Area Scan	Zoom Scan
psSAR1g [W/Kg]	0.639	<b>0.655</b>
psSAR10g [W/Kg]	0.434	<b>0.434</b>
Power Drift [dB]	N/A	0.01



# Measurement Report for Band 14: LTE-FDD (SC-FDMA, 1 RB, 10 MHz, QPSK) RBPosition:Mid AntennaCfg:SISO, BACK

## Exposure Conditions

Band	Band 14	TSL Permittivity	41.4
Frequency [MHz]   Channel Number	793.000   23330	TSL Conductivity [S/m]	0.927
Group   UID	LTE-FDD   10175-CAH	Phantom Section   TSL	Flat   HSL
Conversion Factor	8.93	Test Distance [mm]	5.00

## Hardware Setup

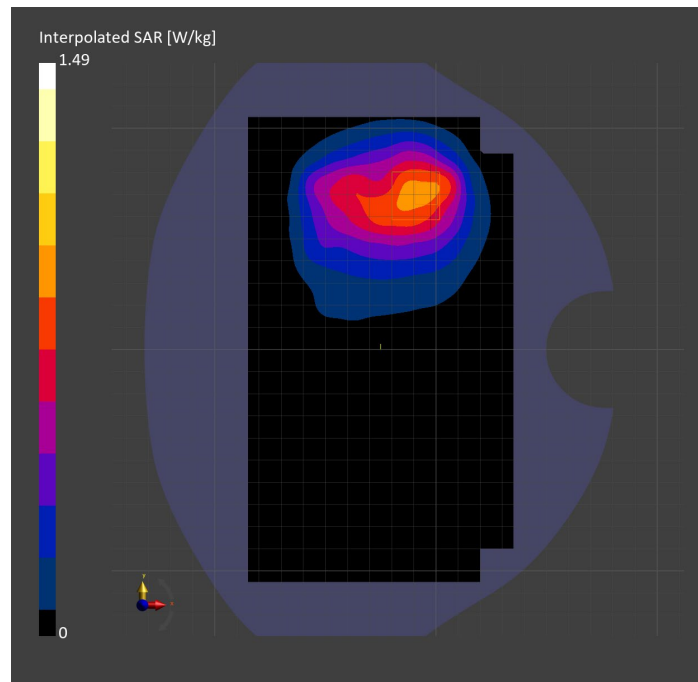
Probe   Calibration Date	EX3DV4 - SN7448   2023-02-14	Phantom	Twin-SAM V5.0 (30deg probe tilt)
DAE   Calibration Date	DAE4 Sn1472   2023-01-23	TSL Type	HBBL-600-10000
Software Version	16.2.4.2524		

## Scan Setup

	Area Scan	Zoom Scan
Grid Extents [mm]	120.0 x 210.0	30.0 x 30.0 x 30.0
Grid Steps [mm]	15.0 x 15.0	6.0 x 6.0 x 1.5
Sensor Surface [mm]	3.0	1.4
Graded Grid	N/A	Yes
M2/M1 [%]		81.3
Dist 3dB Peak [mm]		16.1

## Measurement Results

	Area Scan	Zoom Scan
psSAR1g [W/Kg]	0.815	<b>0.822</b>
psSAR10g [W/Kg]	0.546	<b>0.491</b>
Power Drift [dB]	N/A	-0.03



# Measurement Report for Band 25: LTE-FDD (SC-FDMA, 50% RB, 20 MHz, QPSK) RBPosition:Mid AntennaCfg:SISO, CHEEK

## Exposure Conditions

Band	Band 25	TSL Permittivity	40.3
Frequency [MHz]   Channel Number	1882.500   26365	TSL Conductivity [S/m]	1.42
Group   UID	LTE-FDD   10297-AAE	Phantom Section   TSL	LeftHead   HSL
Conversion Factor	7.53	Test Distance [mm]	0.00

## Hardware Setup

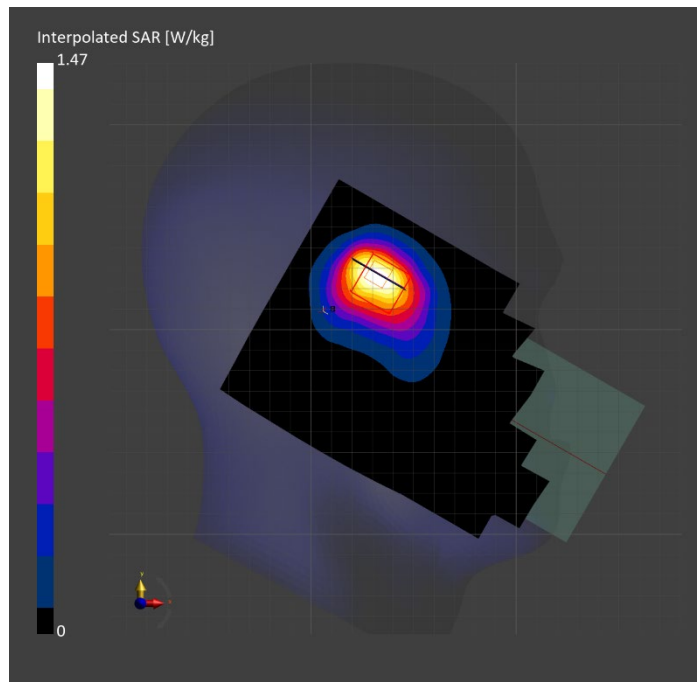
Probe   Calibration Date	EX3DV4 - SN7807   2023-04-11	Phantom	Twin-SAM V8.0 (30deg probe tilt)
DAE   Calibration Date	DAE4 Sn1799   2023-04-04	TSL Type	HBBL-600-10000
Software Version	16.2.4.2524		

## Scan Setup

	Area Scan	Zoom Scan
Grid Extents [mm]	120.0 x 210.0	30.0 x 30.0 x 30.0
Grid Steps [mm]	15.0 x 15.0	6.0 x 6.0 x 1.5
Sensor Surface [mm]	3.0	1.4
Graded Grid	N/A	Yes
M2/M1 [%]		86.3
Dist 3dB Peak [mm]		10.3

## Measurement Results

	Area Scan	Zoom Scan
psSAR1g [W/Kg]	0.824	<b>0.819</b>
psSAR10g [W/Kg]	0.461	<b>0.455</b>
Power Drift [dB]	N/A	0.01



# Measurement Report for Band 25: LTE-FDD (SC-FDMA, 1 RB, 20 MHz, QPSK) RBPosition:Mid AntennaCfg:SISO, BACK

## Exposure Conditions

Band	Band 25	TSL Permittivity	38.0
Frequency [MHz]   Channel Number	1905.000   26590	TSL Conductivity [S/m]	1.45
Group   UID	LTE-FDD   10169-CAF	Phantom Section   TSL	Flat   HSL
Conversion Factor	7.53	Test Distance [mm]	5.00

## Hardware Setup

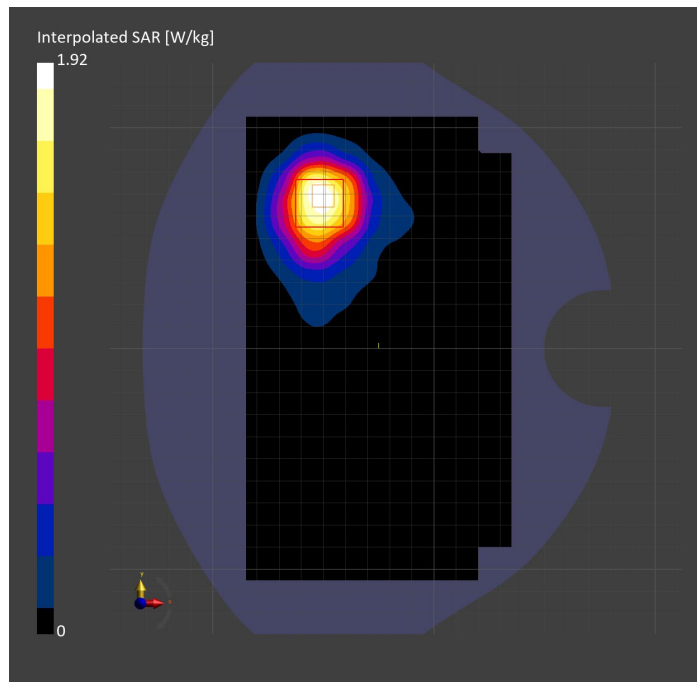
Probe   Calibration Date	EX3DV4 - SN7807   2023-04-11	Phantom	Twin-SAM V8.0 (30deg probe tilt)
DAE   Calibration Date	DAE4 Sn1799   2023-04-04	TSL Type	HBBL-600-10000
Software Version	16.2.4.2524		

## Scan Setup

	Area Scan	Zoom Scan
Grid Extents [mm]	120.0 x 210.0	30.0 x 30.0 x 30.0
Grid Steps [mm]	15.0 x 15.0	6.0 x 6.0 x 1.5
Sensor Surface [mm]	3.0	1.4
Graded Grid	N/A	Yes
M2/M1 [%]		73.7
Dist 3dB Peak [mm]		10.2

## Measurement Results

	Area Scan	Zoom Scan
psSAR1g [W/Kg]	0.767	<b>0.844</b>
psSAR10g [W/Kg]	0.434	<b>0.444</b>
Power Drift [dB]	N/A	-0.01





# Measurement Report for Band 25: LTE-FDD (SC-FDMA, 1 RB, 20 MHz, QPSK) RBPosition:Mid AntennaCfg:SISO, EDGE RIGHT

## Exposure Conditions

Band	Band 25	TSL Permittivity	38.2
Frequency [MHz]   Channel Number	1882.500   26365	TSL Conductivity [S/m]	1.39
Group   UID	LTE-FDD   10169-CAF	Phantom Section   TSL	Flat   HSL
Conversion Factor	7.53	Test Distance [mm]	5.00

## Hardware Setup

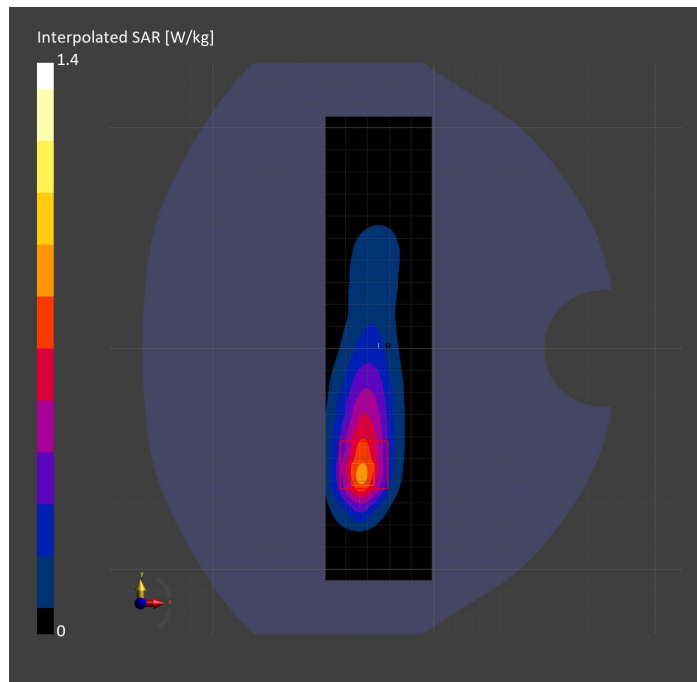
Probe   Calibration Date	EX3DV4 - SN7807   2023-04-11	Phantom	Twin-SAM V8.0 (30deg probe tilt)
DAE   Calibration Date	DAE4 Sn1799   2023-04-04	TSL Type	HBBL-600-10000
Software Version	16.2.4.2524		

## Scan Setup

	Area Scan	Zoom Scan
Grid Extents [mm]	48.0 x 210.0	30.0 x 30.0 x 30.0
Grid Steps [mm]	8.0 x 15.0	6.0 x 6.0 x 1.5
Sensor Surface [mm]	3.0	1.4
Graded Grid	N/A	Yes
M2/M1 [%]		78.6
Dist 3dB Peak [mm]		8.1

## Measurement Results

	Area Scan	Zoom Scan
psSAR1g [W/Kg]	0.675	<b>0.660</b>
psSAR10g [W/Kg]	0.345	<b>0.335</b>
Power Drift [dB]	N/A	0.01



# Measurement Report for Band 26: LTE-FDD (SC-FDMA, 1 RB, 10 MHz, QPSK) RBPosition:Mid AntennaCfg:SISO, BACK

## Exposure Conditions

Band	Band 26	TSL Permittivity	41.4
Frequency [MHz]   Channel Number	831.500   26865	TSL Conductivity [S/m]	0.872
Group   UID	LTE-FDD   10175-CAH	Phantom Section   TSL	Flat   HSL
Conversion Factor	8.76	Test Distance [mm]	5.00

## Hardware Setup

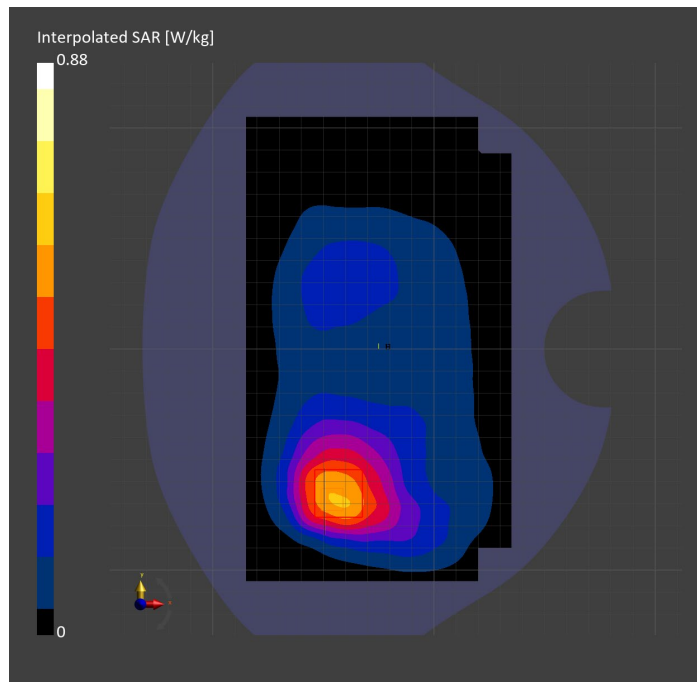
Probe   Calibration Date	EX3DV4 - SN7806   2023-04-04	Phantom	Twin-SAM V8.0 (30deg probe tilt)
DAE   Calibration Date	DAE4 Sn1784   2023-04-03	TSL Type	HBBL-600-10000
Software Version	16.2.4.2524		

## Scan Setup

	Area Scan	Zoom Scan
Grid Extents [mm]	120.0 x 210.0	30.0 x 30.0 x 30.0
Grid Steps [mm]	15.0 x 15.0	6.0 x 6.0 x 1.5
Sensor Surface [mm]	3.0	1.4
Graded Grid	N/A	Yes
M2/M1 [%]		87.1
Dist 3dB Peak [mm]		12.3

## Measurement Results

	Area Scan	Zoom Scan
psSAR1g [W/Kg]	0.525	<b>0.545</b>
psSAR10g [W/Kg]	0.349	<b>0.359</b>
Power Drift [dB]	N/A	0.03



# Measurement Report for Band 26: LTE-FDD (SC-FDMA, 100% RB, 10 MHz, QPSK) AntennaCfg:SISO, CHEEK

## Exposure Conditions

<b>Band</b>	Band 26	<b>TSL Permittivity</b>	41.1
<b>Frequency [MHz]   Channel Number</b>	831.500   26865	<b>TSL Conductivity [S/m]</b>	0.867
<b>Group   UID</b>	LTE-FDD   10108-CAH	<b>Phantom Section   TSL</b>	RightHead   HSL
<b>Conversion Factor</b>	7.83	<b>Test Distance [mm]</b>	0.00

## Hardware Setup

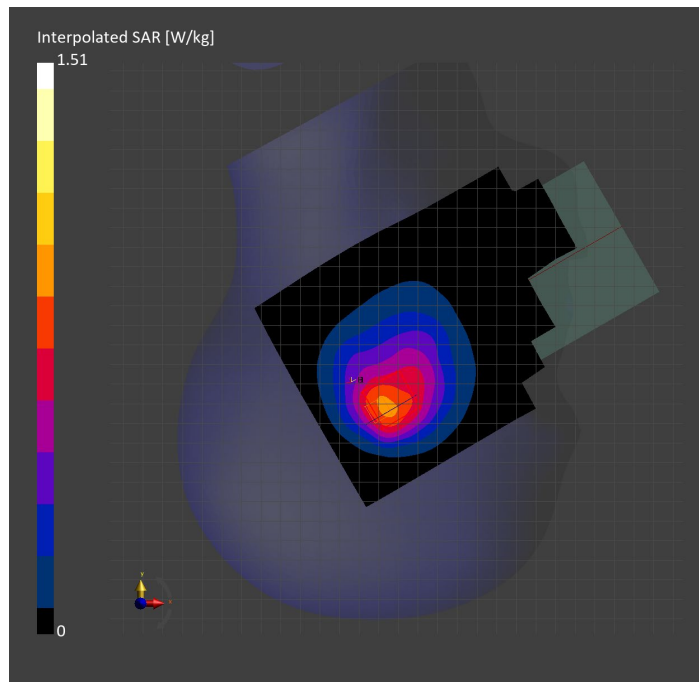
<b>Probe   Calibration Date</b>	EX3DV4 - SN3749   2023-01-27	<b>Phantom</b>	Twin-SAM V8.0 (30deg probe tilt)
<b>DAE   Calibration Date</b>	DAE4 Sn1357   2023-01-27	<b>TSL Type</b>	HBBL-600-10000
<b>Software Version</b>	16.2.4.2524		

## Scan Setup

	Area Scan	Zoom Scan
<b>Grid Extents [mm]</b>	120.0 x 210.0	30.0 x 30.0 x 30.0
<b>Grid Steps [mm]</b>	15.0 x 15.0	6.0 x 6.0 x 1.5
<b>Sensor Surface [mm]</b>	3.0	1.4
<b>Graded Grid</b>	N/A	Yes
<b>M2/M1 [%]</b>		76.4
<b>Dist 3dB Peak [mm]</b>		9.4

## Measurement Results

	Area Scan	Zoom Scan
<b>psSAR1g [W/Kg]</b>	0.786	<b>0.771</b>
<b>psSAR10g [W/Kg]</b>	0.512	<b>0.503</b>
<b>Power Drift [dB]</b>	N/A	0.02



# Measurement Report for Band 26: LTE-FDD (SC-FDMA, 1 RB, 10 MHz, QPSK) RBPosition:Mid AntennaCfg:SISO, EDGE BOTTOM

## Exposure Conditions

Band	Band 26	TSL Permittivity	41.4
Frequency [MHz]   Channel Number	831.500   26865	TSL Conductivity [S/m]	0.872
Group   UID	LTE-FDD   10175-CAH	Phantom Section   TSL	Flat   HSL
Conversion Factor	8.76	Test Distance [mm]	5.00

## Hardware Setup

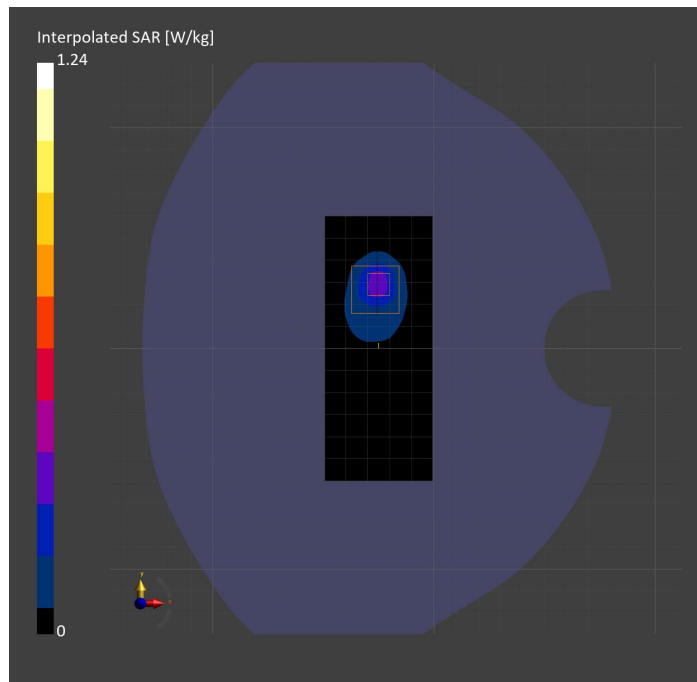
Probe   Calibration Date	EX3DV4 - SN7806   2023-04-04	Phantom	Twin-SAM V8.0 (30deg probe tilt)
DAE   Calibration Date	DAE4 Sn1784   2023-04-03	TSL Type	HBBL-600-10000
Software Version	16.2.4.2524		

## Scan Setup

	Area Scan	Zoom Scan
Grid Extents [mm]	48.6 x 120.0	30.0 x 30.0 x 30.0
Grid Steps [mm]	8.1 x 15.0	6.0 x 6.0 x 1.5
Sensor Surface [mm]	3.0	1.4
Graded Grid	N/A	Yes
M2/M1 [%]		55.0
Dist 3dB Peak [mm]		7.0

## Measurement Results

	Area Scan	Zoom Scan
psSAR1g [W/Kg]	0.298	<b>0.323</b>
psSAR10g [W/Kg]	0.149	<b>0.124</b>
Power Drift [dB]	N/A	-0.01



# Measurement Report for Band 30: LTE-FDD (SC-FDMA, 1 RB, 10 MHz, QPSK) RBPosition:Mid AntennaCfg:SISO, EDGE RIGHT

## Exposure Conditions

Band	Band 30	TSL Permittivity	41.1
Frequency [MHz]   Channel Number	2310.000   27710	TSL Conductivity [S/m]	1.71
Group   UID	LTE-FDD   10175-CAH	Phantom Section   TSL	Flat   HSL
Conversion Factor	7.71	Test Distance [mm]	5.00

## Hardware Setup

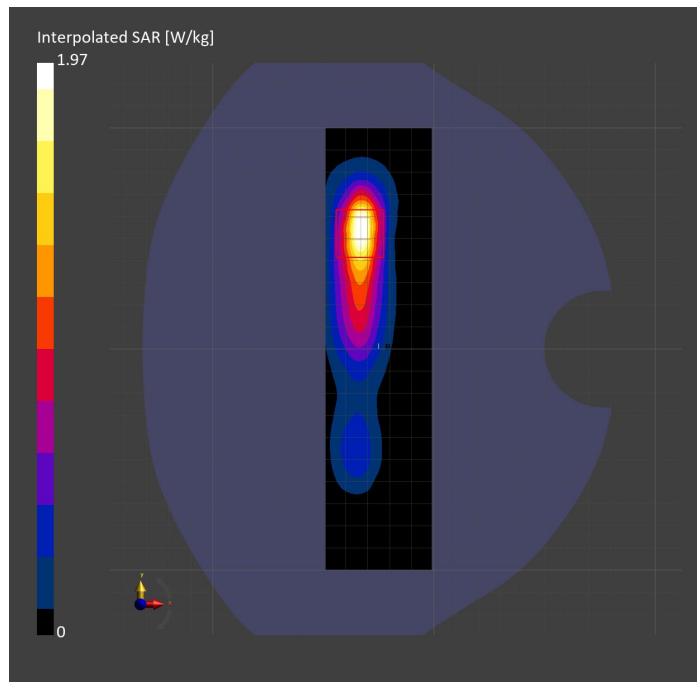
Probe   Calibration Date	EX3DV4 - SN7482   2023-04-18	Phantom	Twin-SAM V8.0 (30deg probe tilt)
DAE   Calibration Date	DAE4 Sn1380   2023-02-14	TSL Type	HBBL-600-10000
Software Version	16.2.4.2524		

## Scan Setup

	Area Scan	Zoom Scan
Grid Extents [mm]	48.0 x 200.0	30.0 x 30.0 x 30.0
Grid Steps [mm]	8.0 x 10.0	5.0 x 5.0 x 1.5
Sensor Surface [mm]	3.0	1.4
Graded Grid	N/A	Yes
M2/M1 [%]		76.9
Dist 3dB Peak [mm]		7.0

## Measurement Results

	Area Scan	Zoom Scan
psSAR1g [W/Kg]	0.840	<b>0.865</b>
psSAR10g [W/Kg]	0.375	<b>0.380</b>
Power Drift [dB]	N/A	0.00



# Measurement Report for Band 30: LTE-FDD (SC-FDMA, 50% RB, 10 MHz, QPSK) RBPosition:Mid AntennaCfg:SISO, BACK

## Exposure Conditions

Band	Band 30	TSL Permittivity	39.9
Frequency [MHz]   Channel Number	2310.000   27710	TSL Conductivity [S/m]	1.62
Group   UID	LTE-FDD   10154-CAH	Phantom Section   TSL	Flat   HSL
Conversion Factor	7.71	Test Distance [mm]	5.00

## Hardware Setup

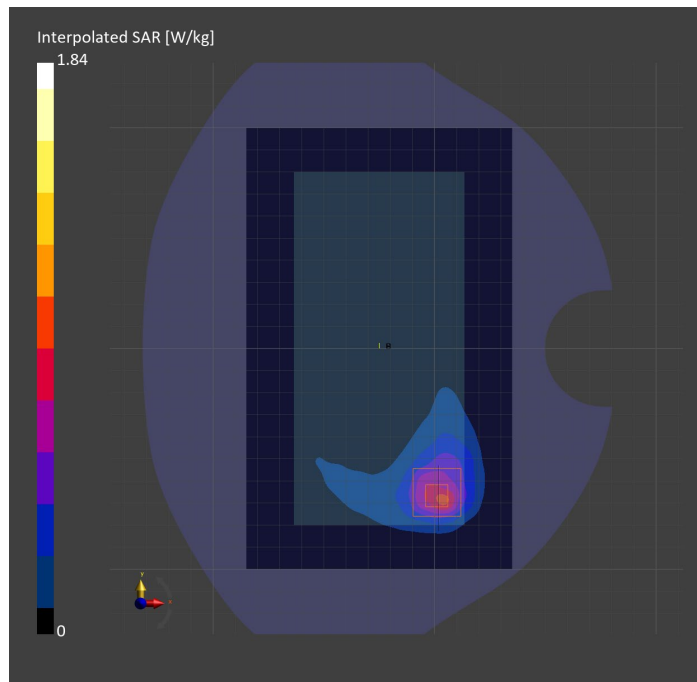
Probe   Calibration Date	EX3DV4 - SN7482   2023-04-18	Phantom	Twin-SAM V8.0 (30deg probe tilt)
DAE   Calibration Date	DAE4 Sn1380   2023-02-14	TSL Type	HBBL-600-10000
Software Version	16.2.4.2524		

## Scan Setup

	Area Scan	Zoom Scan
Grid Extents [mm]	120.0 x 200.0	30.0 x 30.0 x 30.0
Grid Steps [mm]	10.0 x 10.0	5.0 x 5.0 x 1.5
Sensor Surface [mm]	3.0	1.4
Graded Grid	N/A	Yes
M2/M1 [%]		75.1
Dist 3dB Peak [mm]		8.5

## Measurement Results

	Area Scan	Zoom Scan
psSAR1g [W/Kg]	0.725	<b>0.785</b>
psSAR10g [W/Kg]	0.356	<b>0.335</b>
Power Drift [dB]	N/A	-0.03



# Measurement Report for Band 30: LTE-FDD (SC-FDMA, 50% RB, 10 MHz, QPSK) RBPosition:Mid AntennaCfg:SISO, CHEEK

## Exposure Conditions

Band	Band 30	TSL Permittivity	38.6
Frequency [MHz]   Channel Number	2310.000   27710	TSL Conductivity [S/m]	1.68
Group   UID	LTE-FDD   10154-CAH	Phantom Section   TSL	LeftHead   HSL
Conversion Factor	7.71	Test Distance [mm]	0.00

## Hardware Setup

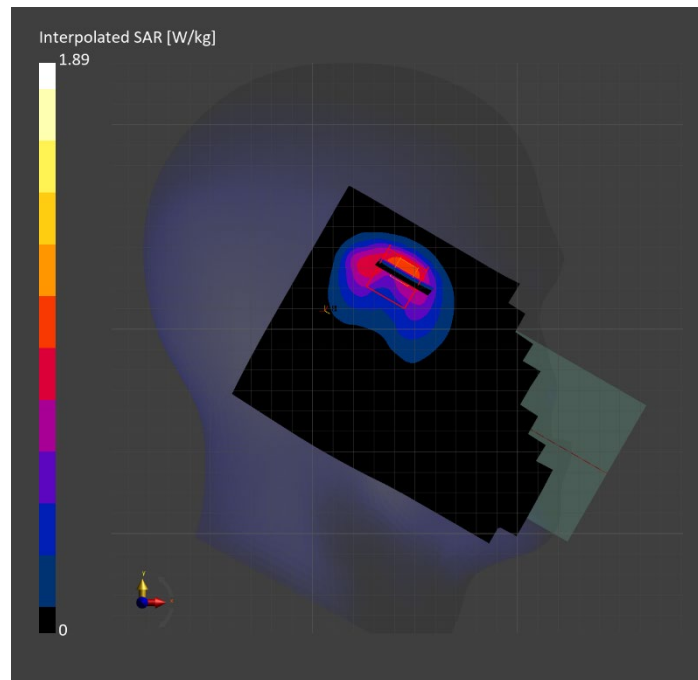
Probe   Calibration Date	EX3DV4 - SN7482   2023-04-18	Phantom	Twin-SAM V8.0 (30deg probe tilt)
DAE   Calibration Date	DAE4 Sn1380   2023-02-14	TSL Type	HBBL-600-10000
Software Version	16.2.4.2524		

## Scan Setup

	Area Scan	Zoom Scan
Grid Extents [mm]	120.0 x 200.0	30.0 x 30.0 x 30.0
Grid Steps [mm]	10.0 x 10.0	5.0 x 5.0 x 1.5
Sensor Surface [mm]	3.0	1.4
Graded Grid	N/A	Yes
M2/M1 [%]		77.7
Dist 3dB Peak [mm]		7.0

## Measurement Results

	Area Scan	Zoom Scan
psSAR1g [W/Kg]	0.806	<b>0.851</b>
psSAR10g [W/Kg]	0.409	<b>0.426</b>
Power Drift [dB]	N/A	-0.02



# Measurement Report for Band 41: LTE-TDD (SC-FDMA, 50% RB, 20 MHz, QPSK, UL Subframe=2,3,4,7,8,9) RBPosition:Mid AntennaCfg:SISO, BACK

## Exposure Conditions

Band	Band 41	TSL Permittivity	38.0
Frequency [MHz]   Channel Number	2549.500   40185	TSL Conductivity [S/m]	1.93
Group   UID	LTE-TDD   10494-AAG	Phantom Section   TSL	Flat   HSL
Conversion Factor	7.32	Test Distance [mm]	5.00

## Hardware Setup

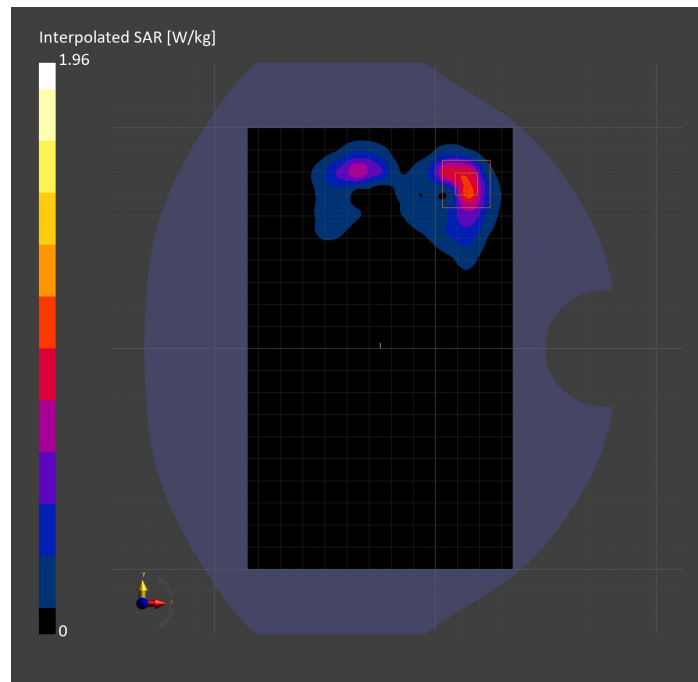
Probe   Calibration Date	EX3DV4 - SN3885   2022-09-20	Phantom	Twin-SAM V5.0 (30deg probe tilt)
DAE   Calibration Date	DAE4 Sn1548   2023-02-14	TSL Type	HBBL-600-10000
Software Version	16.2.4.2524		

## Scan Setup

	Area Scan	Zoom Scan
Grid Extents [mm]	120.0 x 200.0	30.0 x 30.0 x 30.0
Grid Steps [mm]	10.0 x 10.0	5.0 x 5.0 x 1.5
Sensor Surface [mm]	3.0	1.4
Graded Grid	N/A	Yes
M2/M1 [%]		78.0
Dist 3dB Peak [mm]		6.5

## Measurement Results

	Area Scan	Zoom Scan
psSAR1g [W/Kg]	0.772	<b>0.825</b>
psSAR10g [W/Kg]	0.331	<b>0.328</b>
Power Drift [dB]	N/A	0.00





# Measurement Report for Band 41: LTE-TDD (SC-FDMA, 100% RB, 20 MHz, QPSK, UL Subframe=2,3,4,7,8,9) AntennaCfg:SISO, CHEEK

## Exposure Conditions

Band	Band 41	TSL Permittivity	38.5
Frequency [MHz]   Channel Number	2593.000   40620	TSL Conductivity [S/m]	1.93
Group   UID	LTE-TDD   10512-AAG	Phantom Section   TSL	LeftHead   HSL
Conversion Factor	7.32	Test Distance [mm]	0.00

## Hardware Setup

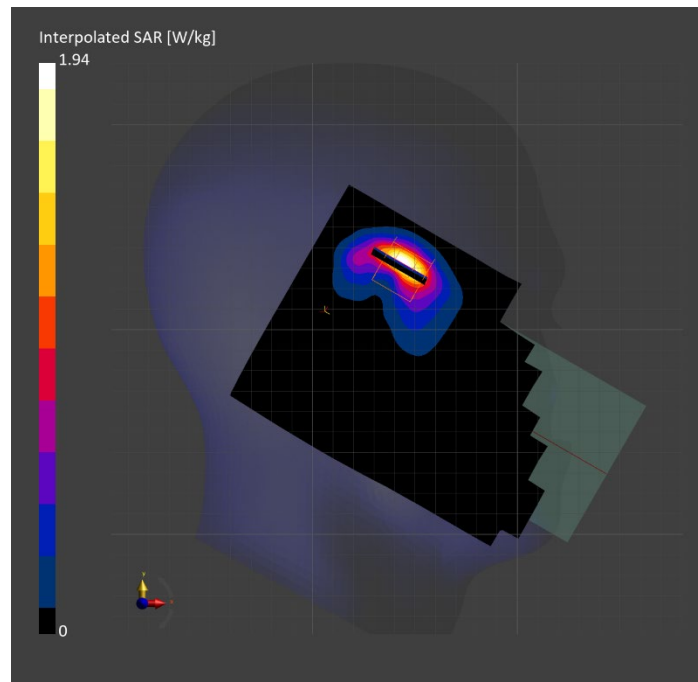
Probe   Calibration Date	EX3DV4 - SN3885   2022-09-20	Phantom	Twin-SAM V5.0 (30deg probe tilt)
DAE   Calibration Date	DAE4 Sn1548   2023-02-14	TSL Type	HBBL-600-10000
Software Version	16.2.4.2524		

## Scan Setup

	Area Scan	Zoom Scan
Grid Extents [mm]	120.0 x 200.0	30.0 x 30.0 x 30.0
Grid Steps [mm]	10.0 x 10.0	5.0 x 5.0 x 1.5
Sensor Surface [mm]	3.0	1.4
Graded Grid	N/A	Yes
M2/M1 [%]		72.1
Dist 3dB Peak [mm]		5.1

## Measurement Results

	Area Scan	Zoom Scan
psSAR1g [W/Kg]	0.674	<b>0.715</b>
psSAR10g [W/Kg]	0.282	<b>0.283</b>
Power Drift [dB]	N/A	-0.01



# Measurement Report for Band 41: LTE-TDD (SC-FDMA, 1 RB, 20 MHz, QPSK, UL Subframe=2,3,4,7,8,9) RBPosition:Mid AntennaCfg:SISO, EDGE RIGHT

## Exposure Conditions

Band	Band 41	TSL Permittivity	37.8
Frequency [MHz]   Channel Number	2636.500   41055	TSL Conductivity [S/m]	2.00
Group   UID	LTE-TDD   10435-AAG	Phantom Section   TSL	Flat   HSL
Conversion Factor	7.32	Test Distance [mm]	5.00

## Hardware Setup

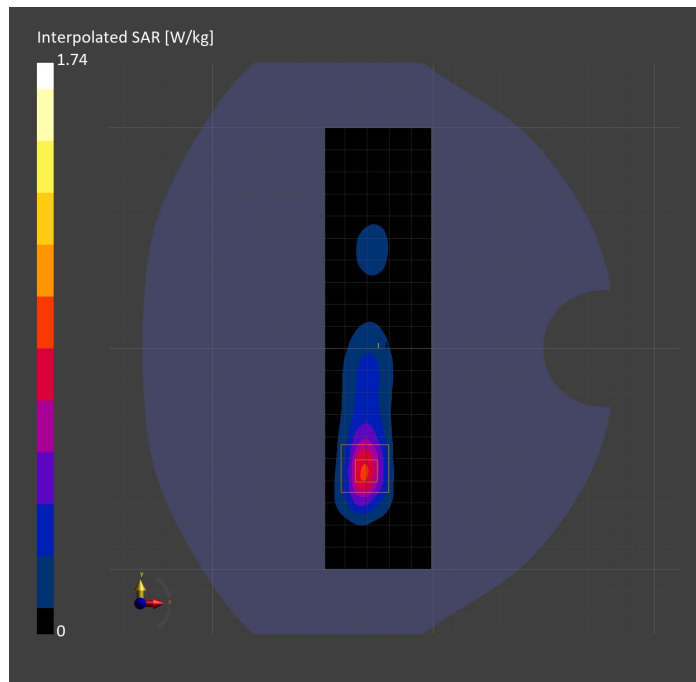
Probe   Calibration Date	EX3DV4 - SN3885   2022-09-20	Phantom	Twin-SAM V5.0 (30deg probe tilt)
DAE   Calibration Date	DAE4 Sn1548   2023-02-14	TSL Type	HBBL-600-10000
Software Version	16.2.4.2524		

## Scan Setup

	Area Scan	Zoom Scan
Grid Extents [mm]	48.0 x 200.0	30.0 x 30.0 x 30.0
Grid Steps [mm]	8.0 x 10.0	5.0 x 5.0 x 1.5
Sensor Surface [mm]	3.0	1.4
Graded Grid	N/A	Yes
M2/M1 [%]		77.0
Dist 3dB Peak [mm]		6.8

## Measurement Results

	Area Scan	Zoom Scan
psSAR1g [W/Kg]	0.664	<b>0.721</b>
psSAR10g [W/Kg]	0.285	<b>0.290</b>
Power Drift [dB]	N/A	-0.12



# Measurement Report for Band 48: LTE-TDD (SC-FDMA, 1 RB, 20 MHz, QPSK, UL Subframe=2,3,4,7,8,9) RBPosition:Mid AntennaCfg:SISO, CHEEK

## Exposure Conditions

Band	Band 48	TSL Permittivity	38.9
Frequency [MHz]   Channel Number	3646.700   56207	TSL Conductivity [S/m]	3.06
Group   UID	LTE-TDD   10435-AAG	Phantom Section   TSL	RightHead   HSL
Conversion Factor	6.66	Test Distance [mm]	0.00

## Hardware Setup

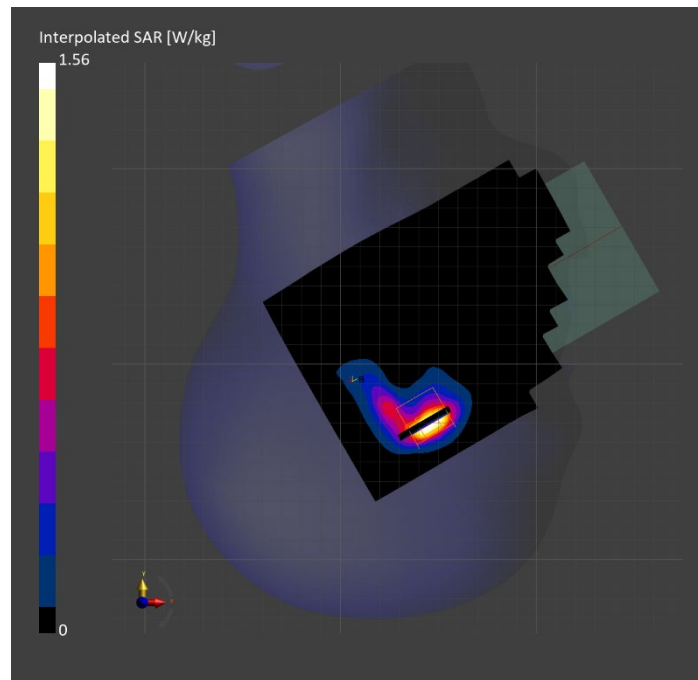
Probe   Calibration Date	EX3DV4 - SN3990   2023-02-17	Phantom	Twin-SAM V5.0 (30deg probe tilt)
DAE   Calibration Date	DAE4 Sn1545   2023-02-14	TSL Type	HBBL-600-10000
Software Version	16.2.4.2524		

## Scan Setup

	Area Scan	Zoom Scan
Grid Extents [mm]	120.0 x 200.0	30.0 x 30.0 x 28.0
Grid Steps [mm]	10.0 x 10.0	5.0 x 5.0 x 1.4
Sensor Surface [mm]	3.0	1.4
Graded Grid	N/A	Yes
M2/M1 [%]		70.9
Dist 3dB Peak [mm]		5.1

## Measurement Results

	Area Scan	Zoom Scan
psSAR1g [W/Kg]	0.466	<b>0.496</b>
psSAR10g [W/Kg]	0.171	<b>0.169</b>
Power Drift [dB]	N/A	0.04



# Measurement Report for Band 48: LTE-TDD (SC-FDMA, 50% RB, 20 MHz, QPSK, UL Subframe=2,3,4,7,8,9) RBPosition:Mid AntennaCfg:SISO, BACK

## Exposure Conditions

Band	Band 48	TSL Permittivity	38.8
Frequency [MHz]   Channel Number	3646.700   56207	TSL Conductivity [S/m]	3.14
Group   UID	LTE-TDD   10494-AAG	Phantom Section   TSL	Flat   HSL
Conversion Factor	6.92	Test Distance [mm]	5.00

## Hardware Setup

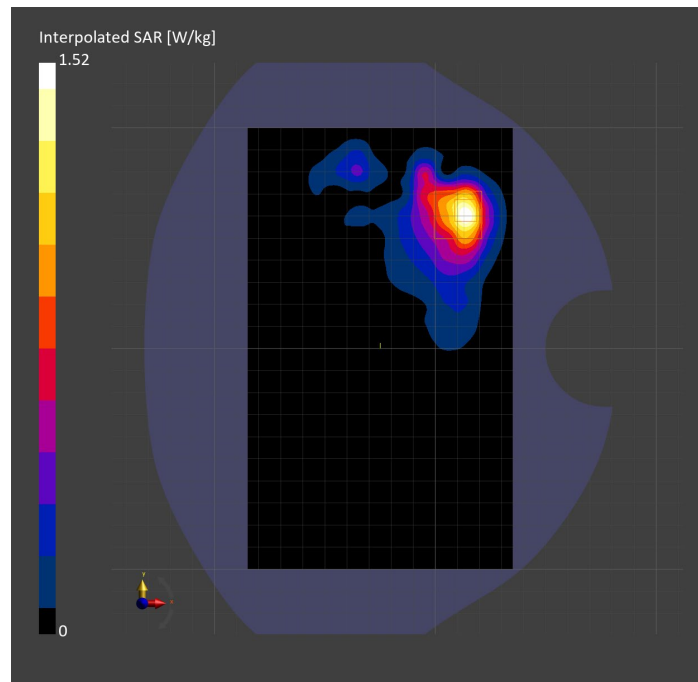
Probe   Calibration Date	EX3DV4 - SN7335   2023-01-26	Phantom	Twin-SAM V8.0 (30deg probe tilt)
DAE   Calibration Date	DAE4ip Sn1619   2023-04-18	TSL Type	HBBL-600-10000
Software Version	16.2.4.2524		

## Scan Setup

	Area Scan	Zoom Scan
Grid Extents [mm]	120.0 x 200.0	30.0 x 30.0 x 28.0
Grid Steps [mm]	10.0 x 10.0	5.0 x 5.0 x 1.4
Sensor Surface [mm]	3.0	1.4
Graded Grid	N/A	Yes
M2/M1 [%]		71.9
Dist 3dB Peak [mm]		8.1

## Measurement Results

	Area Scan	Zoom Scan
psSAR1g [W/Kg]	0.520	<b>0.516</b>
psSAR10g [W/Kg]	0.215	<b>0.205</b>
Power Drift [dB]	N/A	-0.01



# Measurement Report for Band 48: LTE-TDD (SC-FDMA, 50% RB, 20 MHz, QPSK, UL Subframe=2,3,4,7,8,9) RBPosition:Mid AntennaCfg:SISO, EDGE LEFT

## Exposure Conditions

Band	Band 48	TSL Permittivity	38.8
Frequency [MHz]   Channel Number	3646.700   56207	TSL Conductivity [S/m]	3.14
Group   UID	LTE-TDD   10494-AAG	Phantom Section   TSL	Flat   HSL
Conversion Factor	6.92	Test Distance [mm]	5.00

## Hardware Setup

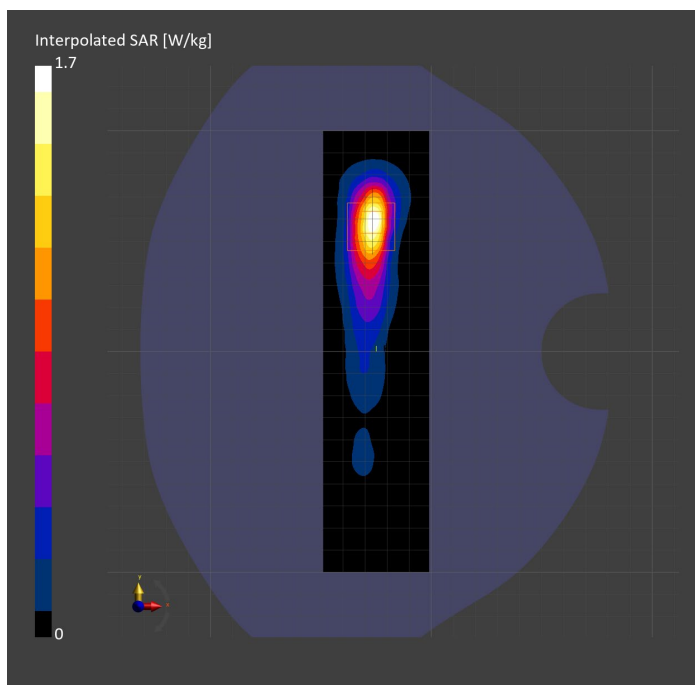
Probe   Calibration Date	EX3DV4 - SN7335   2023-01-26	Phantom	Twin-SAM V8.0 (30deg probe tilt)
DAE   Calibration Date	DAE4ip Sn1619   2023-04-18	TSL Type	HBBL-600-10000
Software Version	16.2.4.2524		

## Scan Setup

	Area Scan	Zoom Scan
Grid Extents [mm]	48.0 x 200.0	30.0 x 30.0 x 28.0
Grid Steps [mm]	8.0 x 10.0	5.0 x 5.0 x 1.4
Sensor Surface [mm]	3.0	1.4
Graded Grid	N/A	Yes
M2/M1 [%]		72.7
Dist 3dB Peak [mm]		6.8

## Measurement Results

	Area Scan	Zoom Scan
psSAR1g [W/Kg]	0.600	<b>0.599</b>
psSAR10g [W/Kg]	0.225	<b>0.217</b>
Power Drift [dB]	N/A	-0.00



# Measurement Report for Band 53: LTE-TDD (SC-FDMA, 50% RB, 10 MHz, QPSK, UL Subframe=2,3,4,7,8,9) RBPosition:Mid AntennaCfg:SISO, CHEEK

## Exposure Conditions

<b>Band</b>	Band 53	<b>TSL Permittivity</b>	37.8
<b>Frequency [MHz]   Channel Number</b>	2489.200   60197	<b>TSL Conductivity [S/m]</b>	1.83
<b>Group   UID</b>	LTE-TDD   10488-AAG	<b>Phantom Section   TSL</b>	RightHead   HSL
<b>Conversion Factor</b>	7.33	<b>Test Distance [mm]</b>	0.00

## Hardware Setup

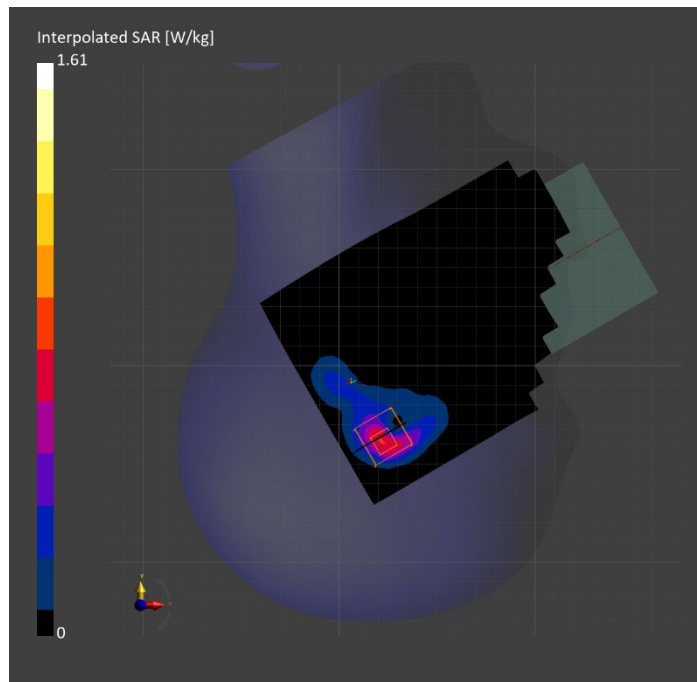
<b>Probe   Calibration Date</b>	EX3DV4 - SN3772   2023-02-13	<b>Phantom</b>	Twin-SAM V8.0 (30deg probe tilt)
<b>DAE   Calibration Date</b>	DAE4 Sn1359   2023-01-24	<b>TSL Type</b>	HBBL-600-10000
<b>Software Version</b>	16.2.4.2524		

## Scan Setup

	Area Scan	Zoom Scan
<b>Grid Extents [mm]</b>	120.0 x 200.0	30.0 x 30.0 x 30.0
<b>Grid Steps [mm]</b>	10.0 x 10.0	5.0 x 5.0 x 1.5
<b>Sensor Surface [mm]</b>	3.0	1.4
<b>Graded Grid</b>	N/A	Yes
<b>M2/M1 [%]</b>		74.2
<b>Dist 3dB Peak [mm]</b>		5.7

## Measurement Results

	Area Scan	Zoom Scan
<b>psSAR1g [W/Kg]</b>	0.604	<b>0.643</b>
<b>psSAR10g [W/Kg]</b>	0.262	<b>0.256</b>
<b>Power Drift [dB]</b>	N/A	-0.18



# Measurement Report for Band 53: LTE-TDD (SC-FDMA, 50% RB, 10 MHz, QPSK, UL Subframe=2,3,4,7,8,9) RBPosition:Mid AntennaCfg:SISO, BACK

## Exposure Conditions

Band	Band 53	TSL Permittivity	37.4
Frequency [MHz]   Channel Number	2489.200   60197	TSL Conductivity [S/m]	1.82
Group   UID	LTE-TDD   10488-AAG	Phantom Section   TSL	Flat   HSL
Conversion Factor	7.33	Test Distance [mm]	5.00

## Hardware Setup

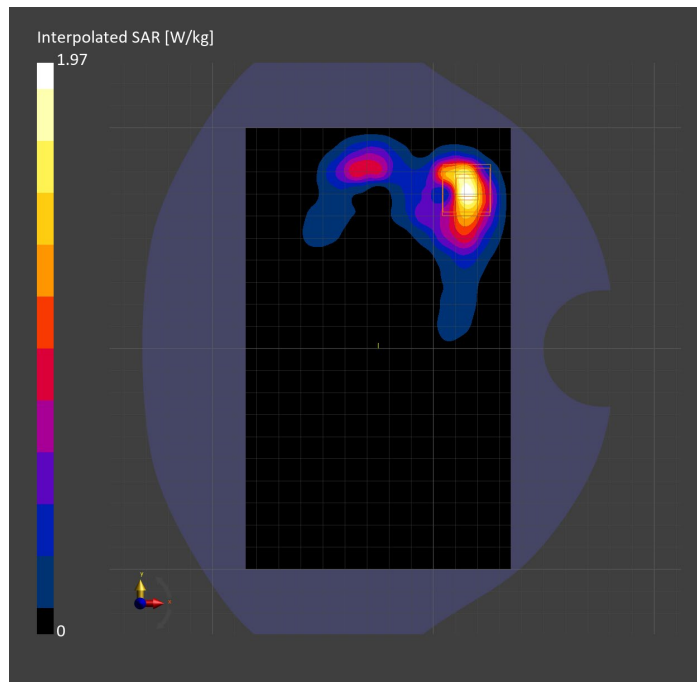
Probe   Calibration Date	EX3DV4 - SN3772   2023-02-13	Phantom	Twin-SAM V8.0 (30deg probe tilt)
DAE   Calibration Date	DAE4 Sn1359   2023-01-24	TSL Type	HBBL-600-10000
Software Version	16.2.4.2524		

## Scan Setup

	Area Scan	Zoom Scan
Grid Extents [mm]	120.0 x 200.0	30.0 x 30.0 x 30.0
Grid Steps [mm]	10.0 x 10.0	5.0 x 5.0 x 1.5
Sensor Surface [mm]	3.0	1.4
Graded Grid	N/A	Yes
M2/M1 [%]		78.3
Dist 3dB Peak [mm]		5.7

## Measurement Results

	Area Scan	Zoom Scan
psSAR1g [W/Kg]	0.785	<b>0.817</b>
psSAR10g [W/Kg]	0.345	<b>0.321</b>
Power Drift [dB]	N/A	-0.15



# Measurement Report for Band 53: LTE-TDD (SC-FDMA, 50% RB, 10 MHz, QPSK, UL Subframe=2,3,4,7,8,9) RBPosition:Mid AntennaCfg:SISO, EDGE LEFT

## Exposure Conditions

Band	Band 53	TSL Permittivity	37.4
Frequency [MHz]   Channel Number	2489.200   60197	TSL Conductivity [S/m]	1.82
Group   UID	LTE-TDD   10488-AAG	Phantom Section   TSL	Flat   HSL
Conversion Factor	7.33	Test Distance [mm]	5.00

## Hardware Setup

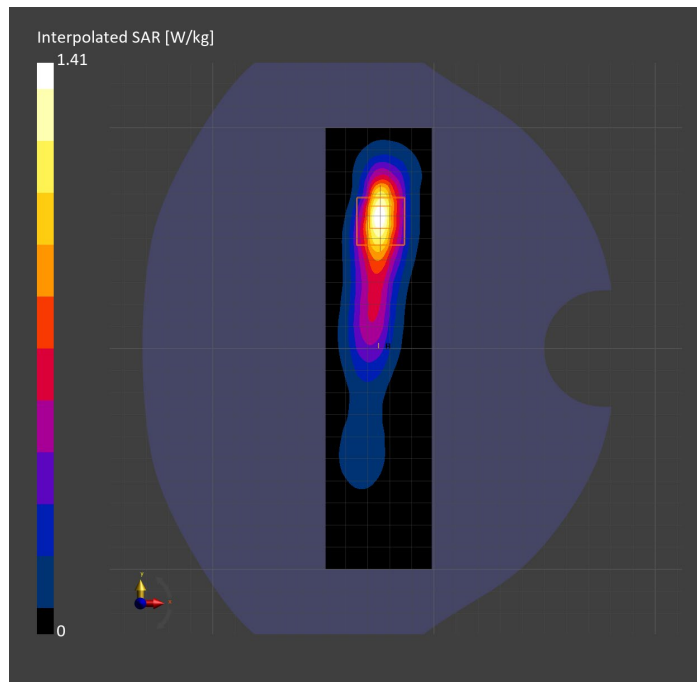
Probe   Calibration Date	EX3DV4 - SN3772   2023-02-13	Phantom	Twin-SAM V8.0 (30deg probe tilt)
DAE   Calibration Date	DAE4 Sn1359   2023-01-24	TSL Type	HBBL-600-10000
Software Version	16.2.4.2524		

## Scan Setup

	Area Scan	Zoom Scan
Grid Extents [mm]	48.0 x 200.0	30.0 x 30.0 x 30.0
Grid Steps [mm]	8.0 x 10.0	5.0 x 5.0 x 1.5
Sensor Surface [mm]	3.0	1.4
Graded Grid	N/A	Yes
M2/M1 [%]		77.8
Dist 3dB Peak [mm]		7.0

## Measurement Results

	Area Scan	Zoom Scan
psSAR1g [W/Kg]	0.639	<b>0.623</b>
psSAR10g [W/Kg]	0.279	<b>0.268</b>
Power Drift [dB]	N/A	0.01





# Measurement Report for Band 66: LTE-FDD (SC-FDMA, 50% RB, 20 MHz, QPSK) RBPosition:Mid AntennaCfg:SISO, EDGE BOTTOM

## Exposure Conditions

Band	Band 66	TSL Permittivity	40.1
Frequency [MHz]   Channel Number	1720.000   132072	TSL Conductivity [S/m]	1.30
Group   UID	LTE-FDD   10297-AAE	Phantom Section   TSL	Flat   HSL
Conversion Factor	8.98	Test Distance [mm]	5.00

## Hardware Setup

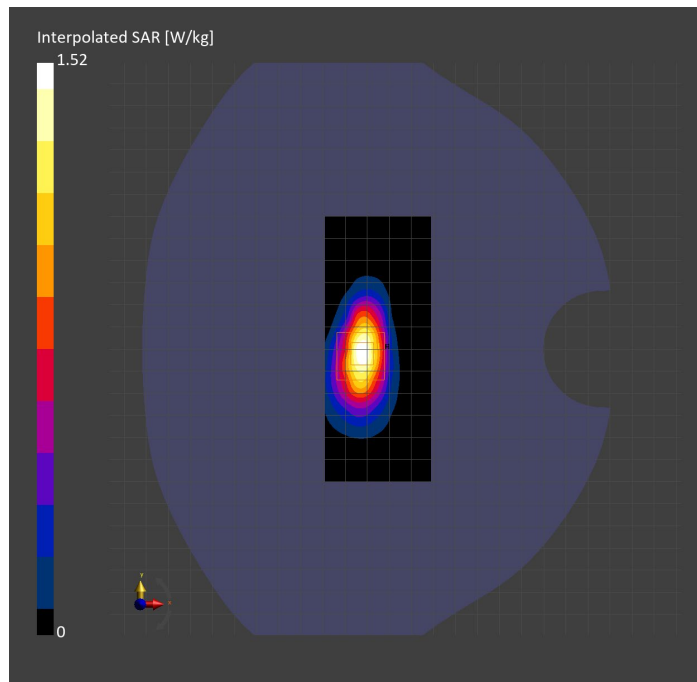
Probe   Calibration Date	EX3DV4 - SN3989   2023-01-26	Phantom	Twin-SAM V8.0 (30deg probe tilt)
DAE   Calibration Date	DAE4 Sn1257   2022-09-20	TSL Type	HBBL-600-10000
Software Version	16.2.4.2524		

## Scan Setup

	Area Scan	Zoom Scan
Grid Extents [mm]	48.0 x 120.0	30.0 x 30.0 x 30.0
Grid Steps [mm]	8.0 x 15.0	6.0 x 6.0 x 1.5
Sensor Surface [mm]	3.0	1.4
Graded Grid	N/A	Yes
M2/M1 [%]		80.7
Dist 3dB Peak [mm]		8.4

## Measurement Results

	Area Scan	Zoom Scan
psSAR1g [W/Kg]	0.785	<b>0.778</b>
psSAR10g [W/Kg]	0.388	<b>0.384</b>
Power Drift [dB]	N/A	0.01



# Measurement Report for Band 66: LTE-FDD (SC-FDMA, 1 RB, 20 MHz, QPSK) RBPosition:Mid AntennaCfg:SISO, CHEEK

## Exposure Conditions

Band	Band 66	TSL Permittivity	40.1
Frequency [MHz]   Channel Number	1770.000   132572	TSL Conductivity [S/m]	1.35
Group   UID	LTE-FDD   10169-CAF	Phantom Section   TSL	RightHead   HSL
Conversion Factor	8.66	Test Distance [mm]	0.00

## Hardware Setup

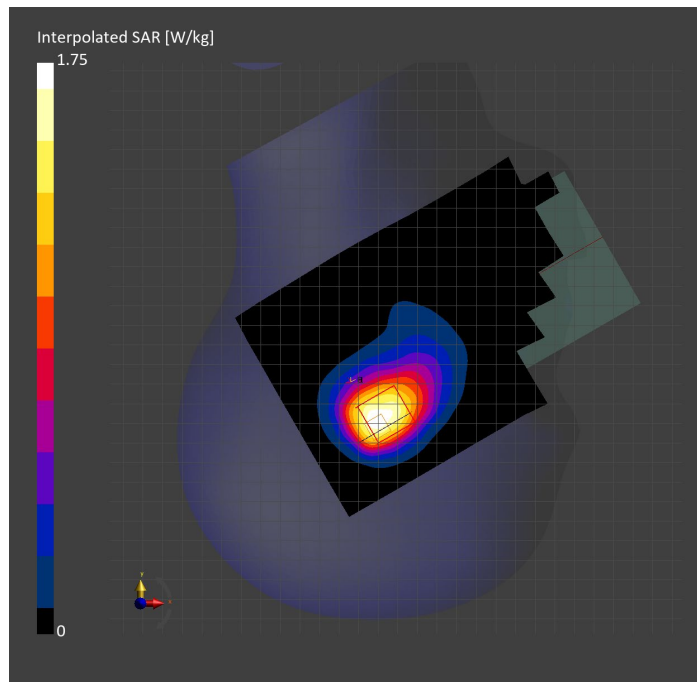
Probe   Calibration Date	EX3DV4 - SN7569   2023-04-18	Phantom	Twin-SAM V8.0 (30deg probe tilt)
DAE   Calibration Date	DAE4 Sn1547   2023-04-18	TSL Type	HBBL-600-10000
Software Version	16.2.4.2524		

## Scan Setup

	Area Scan	Zoom Scan
Grid Extents [mm]	120.0 x 210.0	30.0 x 30.0 x 30.0
Grid Steps [mm]	15.0 x 15.0	6.0 x 6.0 x 1.5
Sensor Surface [mm]	3.0	1.4
Graded Grid	N/A	Yes
M2/M1 [%]		71.7
Dist 3dB Peak [mm]		6.8

## Measurement Results

	Area Scan	Zoom Scan
psSAR1g [W/Kg]	0.805	<b>0.744</b>
psSAR10g [W/Kg]	0.470	<b>0.436</b>
Power Drift [dB]	N/A	-0.05



# Measurement Report for Band 66: LTE-FDD (SC-FDMA, 1 RB, 20 MHz, QPSK) RBPosition:Mid AntennaCfg:SISO, BACK

## Exposure Conditions

Band	Band 66	TSL Permittivity	40.0
Frequency [MHz]   Channel Number	1770.000   132572	TSL Conductivity [S/m]	1.32
Group   UID	LTE-FDD   10169-CAF	Phantom Section   TSL	Flat   HSL
Conversion Factor	8.98	Test Distance [mm]	5.00

## Hardware Setup

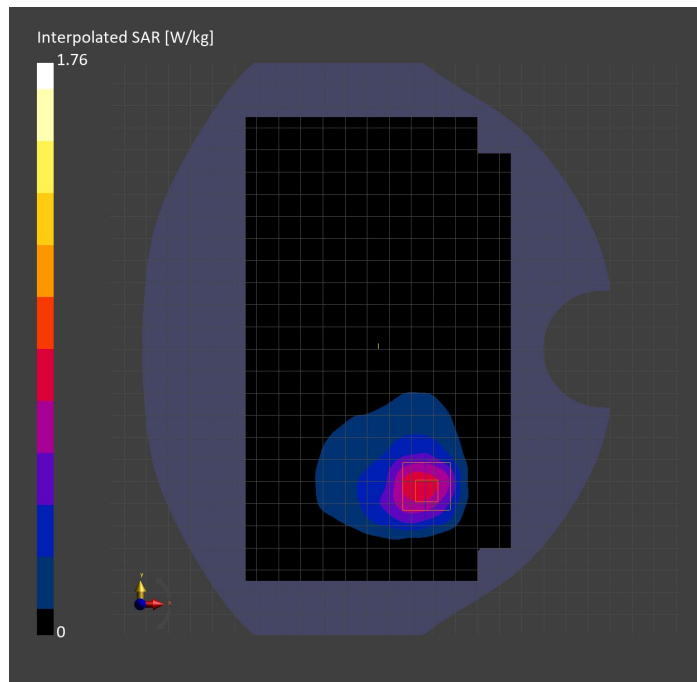
Probe   Calibration Date	EX3DV4 - SN3989   2023-01-26	Phantom	Twin-SAM V8.0 (30deg probe tilt)
DAE   Calibration Date	DAE4 Sn1257   2022-09-20	TSL Type	HBBL-600-10000
Software Version	16.2.4.2524		

## Scan Setup

	Area Scan	Zoom Scan
Grid Extents [mm]	120.0 x 210.0	30.0 x 30.0 x 30.0
Grid Steps [mm]	15.0 x 15.0	6.0 x 6.0 x 1.5
Sensor Surface [mm]	3.0	1.4
Graded Grid	N/A	Yes
M2/M1 [%]		79.5
Dist 3dB Peak [mm]		10.3

## Measurement Results

	Area Scan	Zoom Scan
psSAR1g [W/Kg]	0.691	<b>0.854</b>
psSAR10g [W/Kg]	0.395	<b>0.414</b>
Power Drift [dB]	N/A	-0.01



# Measurement Report for Band 71: LTE-FDD (SC-FDMA, 1 RB, 20 MHz, QPSK) RBPosition:Mid AntennaCfg:SISO, EDGE RIGHT

## Exposure Conditions

Band	Band 71	TSL Permittivity	42.2
Frequency [MHz]   Channel Number	680.500   133297	TSL Conductivity [S/m]	0.856
Group   UID	LTE-FDD   10169-CAF	Phantom Section   TSL	Flat   HSL
Conversion Factor	10.62	Test Distance [mm]	5.00

## Hardware Setup

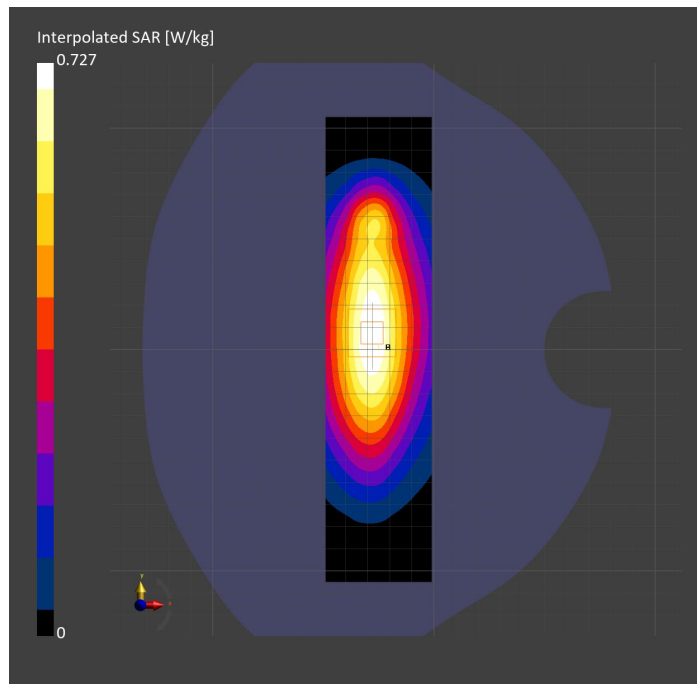
Probe   Calibration Date	EX3DV4 - SN7589   2023-04-18	Phantom	Twin-SAM V5.0 (30deg probe tilt)
DAE   Calibration Date	DAE4 Sn1544   2023-01-24	TSL Type	HBBL-600-10000
Software Version	16.2.4.2524		

## Scan Setup

	Area Scan	Zoom Scan
Grid Extents [mm]	48.0 x 210.0	30.0 x 30.0 x 30.0
Grid Steps [mm]	8.0 x 15.0	6.0 x 6.0 x 1.5
Sensor Surface [mm]	3.0	1.4
Graded Grid	N/A	Yes
M2/M1 [%]		86.2
Dist 3dB Peak [mm]		> 15.0

## Measurement Results

	Area Scan	Zoom Scan
psSAR1g [W/Kg]	0.456	<b>0.464</b>
psSAR10g [W/Kg]	0.307	<b>0.311</b>
Power Drift [dB]	N/A	-0.00



# Measurement Report for Band 71: LTE-FDD (SC-FDMA, 1 RB, 20 MHz, QPSK) RBPosition:Mid AntennaCfg:SISO, CHEEK

## Exposure Conditions

Band	Band 71	TSL Permittivity	41.7
Frequency [MHz]   Channel Number	680.500   133297	TSL Conductivity [S/m]	0.889
Group   UID	LTE-FDD   10169-CAF	Phantom Section   TSL	RightHead   HSL
Conversion Factor	8.93	Test Distance [mm]	0.00

## Hardware Setup

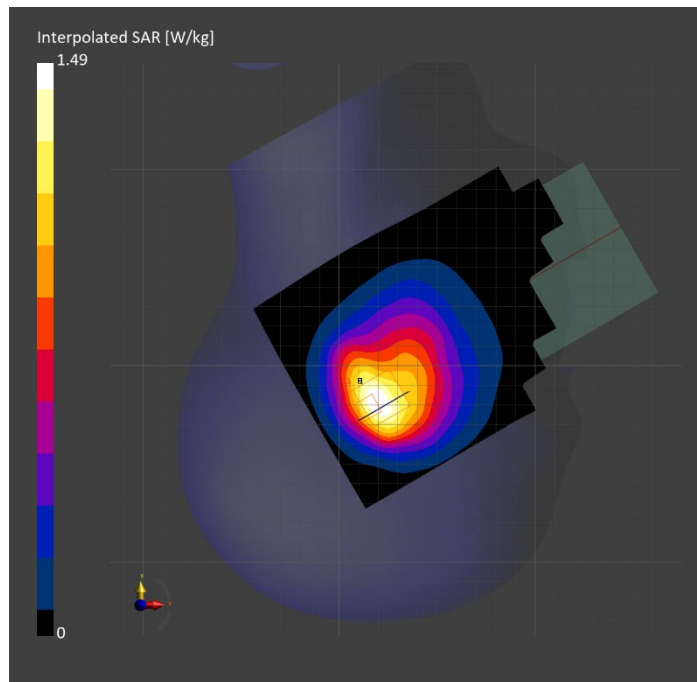
Probe   Calibration Date	EX3DV4 - SN7448   2023-02-14	Phantom	Twin-SAM V5.0 (30deg probe tilt)
DAE   Calibration Date	DAE4 Sn1472   2023-01-23	TSL Type	HBBL-600-10000
Software Version	16.2.4.2524		

## Scan Setup

	Area Scan	Zoom Scan
Grid Extents [mm]	120.0 x 210.0	30.0 x 30.0 x 30.0
Grid Steps [mm]	15.0 x 15.0	6.0 x 6.0 x 1.5
Sensor Surface [mm]	3.0	1.4
Graded Grid	N/A	Yes
M2/M1 [%]		71.8
Dist 3dB Peak [mm]		7.1

## Measurement Results

	Area Scan	Zoom Scan
psSAR1g [W/Kg]	0.638	<b>0.651</b>
psSAR10g [W/Kg]	0.418	<b>0.401</b>
Power Drift [dB]	N/A	-0.04



# Measurement Report for Band 71: LTE-FDD (SC-FDMA, 1 RB, 20 MHz, QPSK) RBPosition:Mid AntennaCfg:SISO, BACK

## Exposure Conditions

Band	Band 71	TSL Permittivity	41.7
Frequency [MHz]   Channel Number	680.500   133297	TSL Conductivity [S/m]	0.889
Group   UID	LTE-FDD   10169-CAF	Phantom Section   TSL	Flat   HSL
Conversion Factor	8.93	Test Distance [mm]	5.00

## Hardware Setup

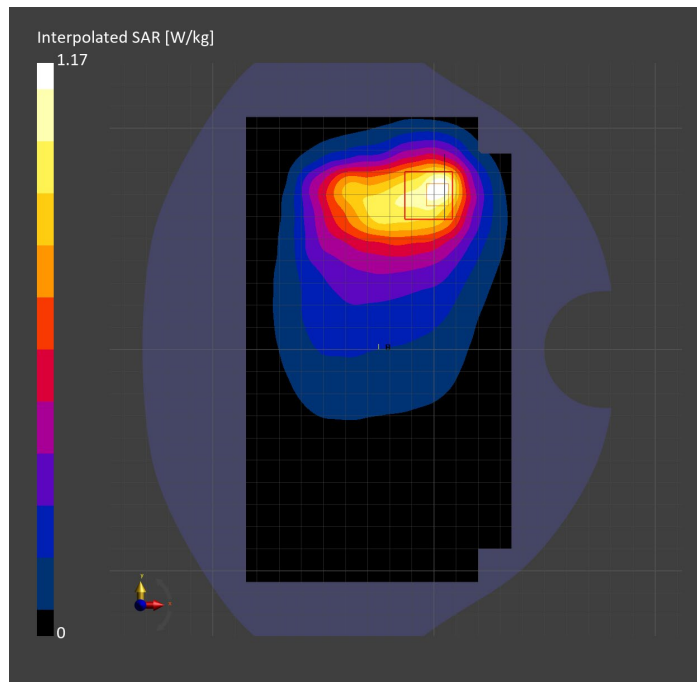
Probe   Calibration Date	EX3DV4 - SN7448   2023-02-14	Phantom	Twin-SAM V5.0 (30deg probe tilt)
DAE   Calibration Date	DAE4 Sn1472   2023-01-23	TSL Type	HBBL-600-10000
Software Version	16.2.4.2524		

## Scan Setup

	Area Scan	Zoom Scan
Grid Extents [mm]	120.0 x 210.0	30.0 x 30.0 x 30.0
Grid Steps [mm]	15.0 x 15.0	6.0 x 6.0 x 1.5
Sensor Surface [mm]	3.0	1.4
Graded Grid	N/A	Yes
M2/M1 [%]		77.5
Dist 3dB Peak [mm]		11.1

## Measurement Results

	Area Scan	Zoom Scan
psSAR1g [W/Kg]	0.591	<b>0.552</b>
psSAR10g [W/Kg]	0.384	<b>0.322</b>
Power Drift [dB]	N/A	0.03



# Measurement Report for Band n5: 5G NR (DFT-s-OFDM, 50% RB, 20 MHz, QPSK, 15 kHz) RBPosition:Mid AntennaCfg:SISO, CHEEK

## Exposure Conditions

Band	Band n5	TSL Permittivity	40.6
Frequency [MHz]   Channel Number	836.500   167300	TSL Conductivity [S/m]	0.868
Group   UID	5G NR FR1 FDD   10939-AAC	Phantom Section   TSL	RightHead   HSL
Conversion Factor	7.83	Test Distance [mm]	0.00

## Hardware Setup

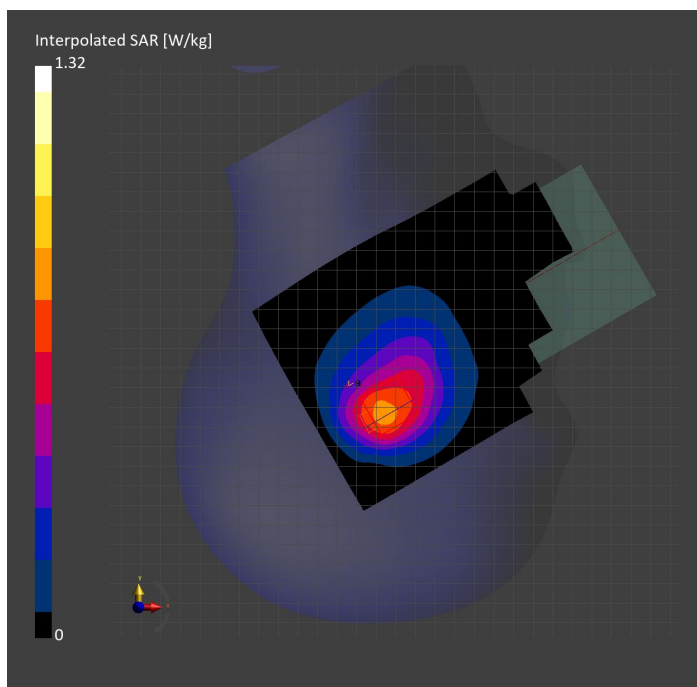
Probe   Calibration Date	EX3DV4 - SN3749   2023-01-27	Phantom	Twin-SAM V8.0 (30deg probe tilt)
DAE   Calibration Date	DAE4 Sn1357   2023-01-27	TSL Type	HBBL-600-10000
Software Version	16.2.4.2524		

## Scan Setup

	Area Scan	Zoom Scan
Grid Extents [mm]	120.0 x 210.0	30.0 x 30.0 x 30.0
Grid Steps [mm]	15.0 x 15.0	6.0 x 6.0 x 1.5
Sensor Surface [mm]	3.0	1.4
Graded Grid	N/A	Yes
M2/M1 [%]		87.0
Dist 3dB Peak [mm]		12.5

## Measurement Results

	Area Scan	Zoom Scan
psSAR1g [W/Kg]	0.702	<b>0.746</b>
psSAR10g [W/Kg]	0.460	<b>0.487</b>
Power Drift [dB]	N/A	-0.01



# Measurement Report for Band n5: 5G NR (DFT-s-OFDM, 1 RB, 20 MHz, QPSK, 15 kHz) RBPosition:Mid AntennaCfg:SISO, BACK

## Exposure Conditions

Band	Band n5	TSL Permittivity	40.6
Frequency [MHz]   Channel Number	836.500   167300	TSL Conductivity [S/m]	0.868
Group   UID	5G NR FR1 FDD   10931-AAC	Phantom Section   TSL	Flat   HSL
Conversion Factor	7.83	Test Distance [mm]	5.00

## Hardware Setup

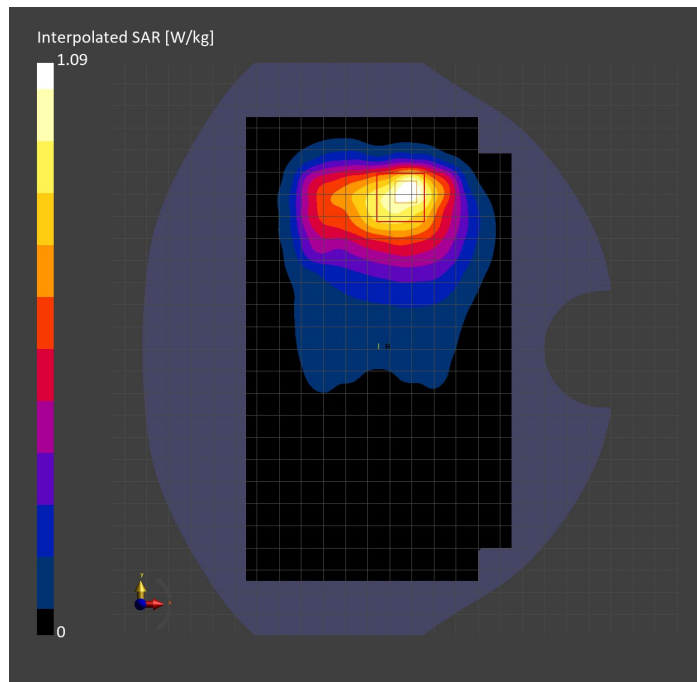
Probe   Calibration Date	EX3DV4 - SN3749   2023-01-27	Phantom	Twin-SAM V8.0 (30deg probe tilt)
DAE   Calibration Date	DAE4 Sn1357   2023-01-27	TSL Type	HBBL-600-10000
Software Version	16.2.4.2524		

## Scan Setup

	Area Scan	Zoom Scan
Grid Extents [mm]	120.0 x 210.0	30.0 x 30.0 x 30.0
Grid Steps [mm]	15.0 x 15.0	6.0 x 6.0 x 1.5
Sensor Surface [mm]	3.0	1.4
Graded Grid	N/A	Yes
M2/M1 [%]		82.4
Dist 3dB Peak [mm]		8.8

## Measurement Results

	Area Scan	Zoom Scan
psSAR1g [W/Kg]	0.660	<b>0.647</b>
psSAR10g [W/Kg]	0.420	<b>0.396</b>
Power Drift [dB]	N/A	-0.08





# Measurement Report for Band n5: 5G NR (DFT-s-OFDM, 50% RB, 20 MHz, QPSK, 15 kHz) RBPosition:Mid AntennaCfg:SISO, EDGE BOTTOM

## Exposure Conditions

Band	Band n5	TSL Permittivity	42.1
Frequency [MHz]   Channel Number	836.500   167300	TSL Conductivity [S/m]	0.898
Group   UID	5G NR FR1 FDD   10939-AAC	Phantom Section   TSL	Flat   HSL
Conversion Factor	8.76	Test Distance [mm]	5.00

## Hardware Setup

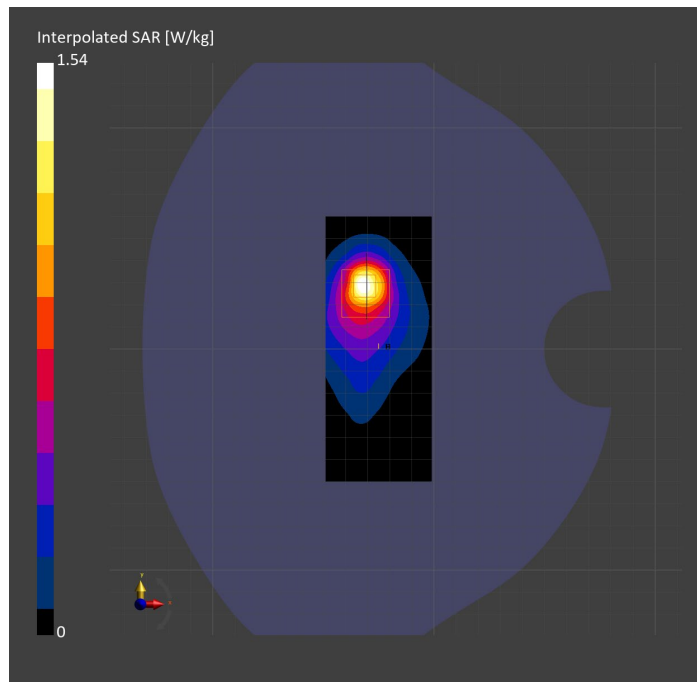
Probe   Calibration Date	EX3DV4 - SN7806   2023-04-04	Phantom	Twin-SAM V8.0 (30deg probe tilt)
DAE   Calibration Date	DAE4 Sn1784   2023-04-03	TSL Type	HBBL-600-10000
Software Version	16.2.4.2524		

## Scan Setup

	Area Scan	Zoom Scan
Grid Extents [mm]	48.0 x 120.0	30.0 x 30.0 x 30.0
Grid Steps [mm]	8.0 x 15.0	6.0 x 6.0 x 1.5
Sensor Surface [mm]	3.0	1.4
Graded Grid	N/A	Yes
M2/M1 [%]		55.1
Dist 3dB Peak [mm]		7.3

## Measurement Results

	Area Scan	Zoom Scan
psSAR1g [W/Kg]	0.382	<b>0.412</b>
psSAR10g [W/Kg]	0.198	<b>0.168</b>
Power Drift [dB]	N/A	-0.05



# Measurement Report for Band n7: 5G NR (DFT-s-OFDM, 50% RB, 40 MHz, QPSK, 15 kHz) RBPosition:Mid AntennaCfg:SISO, EDGE RIGHT

## Exposure Conditions

Band	Band n7	TSL Permittivity	40.3
Frequency [MHz]   Channel Number	2535.000   507000	TSL Conductivity [S/m]	1.85
Group   UID	5G NR FR1 FDD   10942-AAC	Phantom Section   TSL	Flat   HSL
Conversion Factor	7.33	Test Distance [mm]	5.00

## Hardware Setup

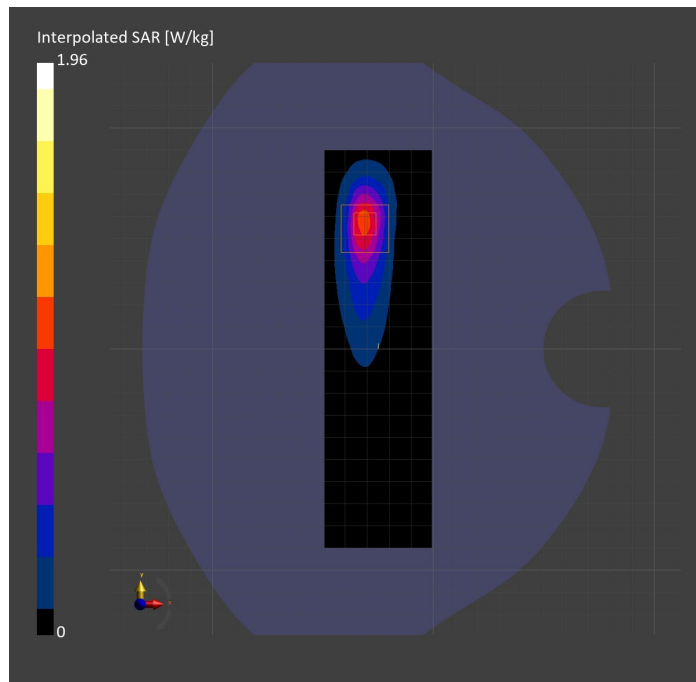
Probe   Calibration Date	EX3DV4 - SN7808   2023-04-18	Phantom	Twin-SAM V8.0 (30deg probe tilt)
DAE   Calibration Date	DAE4 Sn1796   2023-04-03	TSL Type	HBBL-600-10000
Software Version	16.2.4.2524		

## Scan Setup

	Area Scan	Zoom Scan
Grid Extents [mm]	48.6 x 180.0	30.0 x 30.0 x 30.0
Grid Steps [mm]	8.1 x 10.0	5.0 x 5.0 x 1.5
Sensor Surface [mm]	3.0	1.4
Graded Grid	N/A	Yes
M2/M1 [%]		75.0
Dist 3dB Peak [mm]		7.0

## Measurement Results

	Area Scan	Zoom Scan
psSAR1g [W/Kg]	0.790	<b>0.808</b>
psSAR10g [W/Kg]	0.344	<b>0.344</b>
Power Drift [dB]	N/A	-0.01



# Measurement Report for Band n7: 5G NR (DFT-s-OFDM, 50% RB, 40 MHz, QPSK, 15 kHz) RBPosition:Mid AntennaCfg:SISO, CHEEK

## Exposure Conditions

Band	Band n7	TSL Permittivity	38.0
Frequency [MHz]   Channel Number	2535.000   507000	TSL Conductivity [S/m]	1.92
Group   UID	5G NR FR1 FDD   10942-AAC	Phantom Section   TSL	RightHead   HSL
Conversion Factor	7.32	Test Distance [mm]	0.00

## Hardware Setup

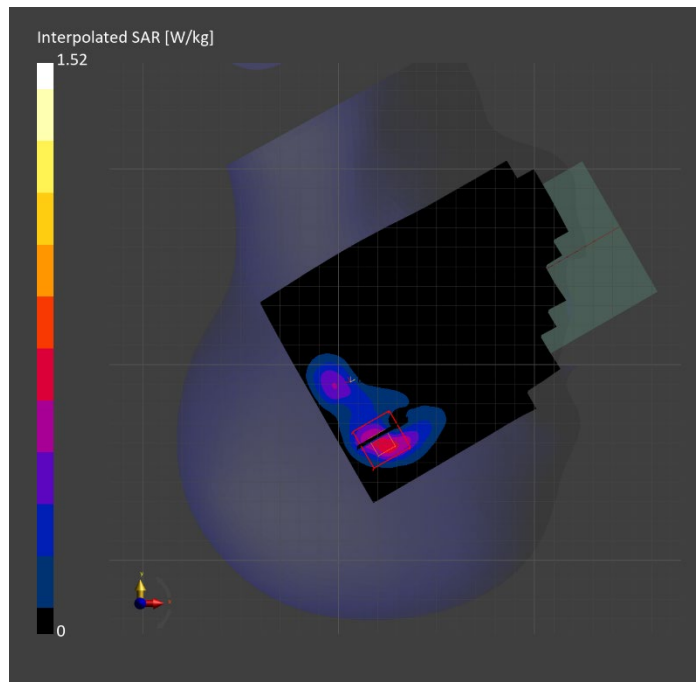
Probe   Calibration Date	EX3DV4 - SN3885   2022-09-20	Phantom	Twin-SAM V5.0 (30deg probe tilt)
DAE   Calibration Date	DAE4 Sn1548   2023-02-14	TSL Type	HBBL-600-10000
Software Version	16.2.4.2524		

## Scan Setup

	Area Scan	Zoom Scan
Grid Extents [mm]	120.0 x 200.0	30.0 x 30.0 x 30.0
Grid Steps [mm]	10.0 x 10.0	5.0 x 5.0 x 1.5
Sensor Surface [mm]	3.0	1.4
Graded Grid	N/A	Yes
M2/M1 [%]		74.6
Dist 3dB Peak [mm]		5.7

## Measurement Results

	Area Scan	Zoom Scan
psSAR1g [W/Kg]	0.532	<b>0.595</b>
psSAR10g [W/Kg]	0.231	<b>0.236</b>
Power Drift [dB]	N/A	0.02



# Measurement Report for Band n7: 5G NR (DFT-s-OFDM, 1 RB, 40 MHz, QPSK, 15 kHz) RBPosition:Mid AntennaCfg:SISO, BACK

## Exposure Conditions

Band	Band n7	TSL Permittivity	38.7
Frequency [MHz]   Channel Number	2535.000   507000	TSL Conductivity [S/m]	1.95
Group   UID	5G NR FR1 FDD   10934-AAC	Phantom Section   TSL	Flat   HSL
Conversion Factor	7.32	Test Distance [mm]	5.00

## Hardware Setup

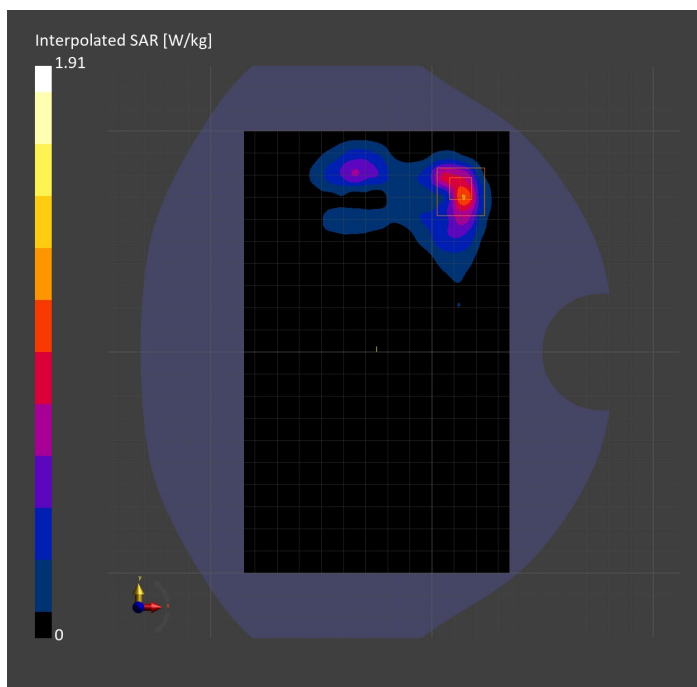
Probe   Calibration Date	EX3DV4 - SN3885   2022-09-20	Phantom	Twin-SAM V5.0 (30deg probe tilt)
DAE   Calibration Date	DAE4 Sn1548   2023-02-14	TSL Type	HBBL-600-10000
Software Version	16.2.4.2524		

## Scan Setup

	Area Scan	Zoom Scan
Grid Extents [mm]	120.0 x 200.0	30.0 x 30.0 x 30.0
Grid Steps [mm]	10.0 x 10.0	5.0 x 5.0 x 1.5
Sensor Surface [mm]	3.0	1.4
Graded Grid	N/A	Yes
M2/M1 [%]		78.2
Dist 3dB Peak [mm]		6.5

## Measurement Results

	Area Scan	Zoom Scan
psSAR1g [W/Kg]	0.760	<b>0.803</b>
psSAR10g [W/Kg]	0.329	<b>0.315</b>
Power Drift [dB]	N/A	0.02



# Measurement Report for Band n12: 5G NR (DFT-s-OFDM, 50% RB, 15 MHz, QPSK, 15 kHz) RBPosition:Mid AntennaCfg:SISO, EDGE RIGHT

## Exposure Conditions

Band	Band n12	TSL Permittivity	42.1
Frequency [MHz]   Channel Number	707.500   141500	TSL Conductivity [S/m]	0.863
Group   UID	5G NR FR1 FDD   10938-AAC	Phantom Section   TSL	Flat   HSL
Conversion Factor	10.62	Test Distance [mm]	5.00

## Hardware Setup

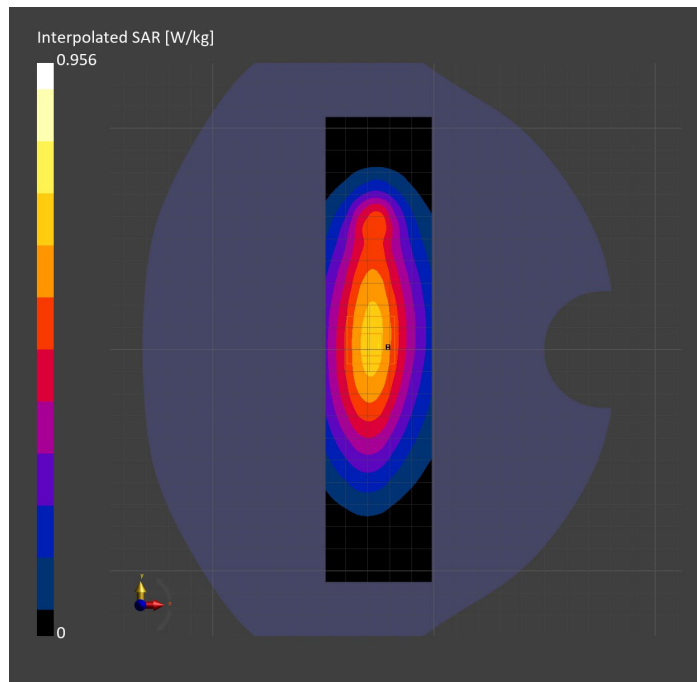
Probe   Calibration Date	EX3DV4 - SN7589   2023-04-18	Phantom	Twin-SAM V5.0 (30deg probe tilt)
DAE   Calibration Date	DAE4 Sn1544   2023-01-24	TSL Type	HBBL-600-10000
Software Version	16.2.4.2524		

## Scan Setup

	Area Scan	Zoom Scan
Grid Extents [mm]	48.0 x 210.0	30.0 x 30.0 x 30.0
Grid Steps [mm]	8.0 x 15.0	6.0 x 6.0 x 1.5
Sensor Surface [mm]	3.0	1.4
Graded Grid	N/A	Yes
M2/M1 [%]		84.7
Dist 3dB Peak [mm]		> 15.0

## Measurement Results

	Area Scan	Zoom Scan
psSAR1g [W/Kg]	0.593	<b>0.601</b>
psSAR10g [W/Kg]	0.399	<b>0.403</b>
Power Drift [dB]	N/A	0.04



# Measurement Report for Band n12: 5G NR (DFT-s-OFDM, 1 RB, 15 MHz, QPSK, 15 kHz) RBPosition:Mid AntennaCfg:SISO, CHEEK

## Exposure Conditions

Band	Band n12	TSL Permittivity	41.0
Frequency [MHz]   Channel Number	707.500   141500	TSL Conductivity [S/m]	0.860
Group   UID	5G NR FR1 FDD   10930-AAC	Phantom Section   TSL	RightHead   HSL
Conversion Factor	8.93	Test Distance [mm]	0.00

## Hardware Setup

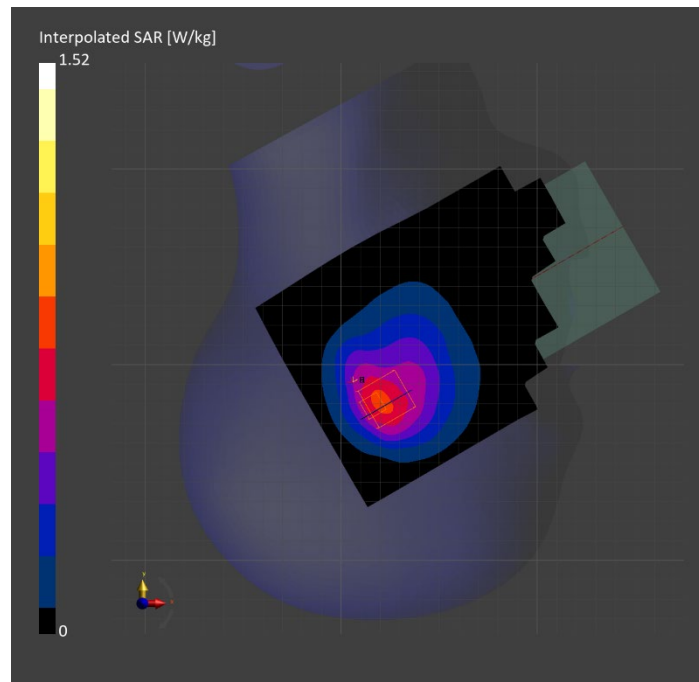
Probe   Calibration Date	EX3DV4 - SN7448   2023-02-14	Phantom	Twin-SAM V5.0 (30deg probe tilt)
DAE   Calibration Date	DAE4 Sn1472   2023-01-23	TSL Type	HBBL-600-10000
Software Version	16.2.4.2524		

## Scan Setup

	Area Scan	Zoom Scan
Grid Extents [mm]	120.0 x 210.0	30.0 x 30.0 x 30.0
Grid Steps [mm]	15.0 x 15.0	6.0 x 6.0 x 1.5
Sensor Surface [mm]	3.0	1.4
Graded Grid	N/A	Yes
M2/M1 [%]		74.1
Dist 3dB Peak [mm]		8.7

## Measurement Results

	Area Scan	Zoom Scan
psSAR1g [W/Kg]	0.690	<b>0.701</b>
psSAR10g [W/Kg]	0.451	<b>0.438</b>
Power Drift [dB]	N/A	-0.01



# Measurement Report for Band n12: 5G NR (DFT-s-OFDM, 1 RB, 15 MHz, QPSK, 15 kHz) RBPosition:Mid AntennaCfg:SISO, BACK

## Exposure Conditions

Band	Band n12	TSL Permittivity	41.0
Frequency [MHz]   Channel Number	707.500   141500	TSL Conductivity [S/m]	0.860
Group   UID	5G NR FR1 FDD   10930-AAC	Phantom Section   TSL	Flat   HSL
Conversion Factor	8.93	Test Distance [mm]	5.00

## Hardware Setup

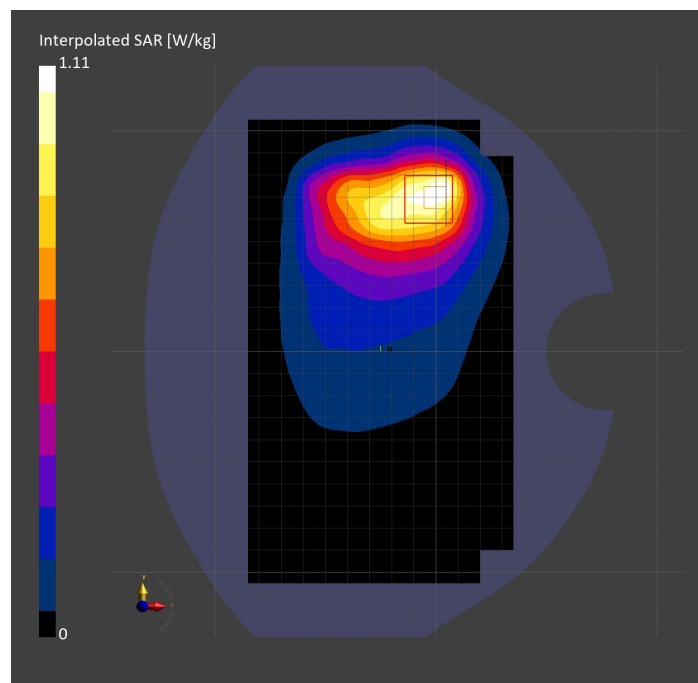
Probe   Calibration Date	EX3DV4 - SN7448   2023-02-14	Phantom	Twin-SAM V5.0 (30deg probe tilt)
DAE   Calibration Date	DAE4 Sn1472   2023-01-23	TSL Type	HBBL-600-10000
Software Version	16.2.4.2524		

## Scan Setup

	Area Scan	Zoom Scan
Grid Extents [mm]	120.0 x 210.0	30.0 x 30.0 x 30.0
Grid Steps [mm]	15.0 x 15.0	6.0 x 6.0 x 1.5
Sensor Surface [mm]	3.0	1.4
Graded Grid	N/A	Yes
M2/M1 [%]		75.4
Dist 3dB Peak [mm]		12.0

## Measurement Results

	Area Scan	Zoom Scan
psSAR1g [W/Kg]	0.584	<b>0.538</b>
psSAR10g [W/Kg]	0.385	<b>0.322</b>
Power Drift [dB]	N/A	-0.07



# Measurement Report for Band n14: 5G NR (DFT-s-OFDM, 50% RB, 10 MHz, QPSK, 15 kHz) RBPosition:Mid AntennaCfg:SISO, EDGE RIGHT

## Exposure Conditions

Band	Band n14	TSL Permittivity	41.8
Frequency [MHz]   Channel Number	793.000   158600	TSL Conductivity [S/m]	0.892
Group   UID	5G NR FR1 FDD   10937-AAD	Phantom Section   TSL	Flat   HSL
Conversion Factor	10.62	Test Distance [mm]	5.00

## Hardware Setup

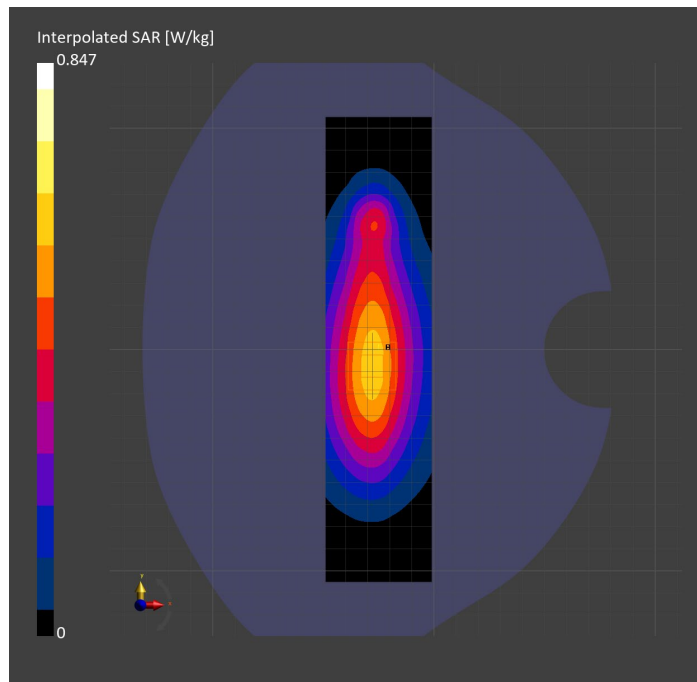
Probe   Calibration Date	EX3DV4 - SN7589   2023-04-18	Phantom	Twin-SAM V5.0 (30deg probe tilt)
DAE   Calibration Date	DAE4 Sn1544   2023-01-24	TSL Type	HBBL-600-10000
Software Version	16.2.4.2524		

## Scan Setup

	Area Scan	Zoom Scan
Grid Extents [mm]	48.0 x 210.0	30.0 x 30.0 x 30.0
Grid Steps [mm]	8.0 x 15.0	6.0 x 6.0 x 1.5
Sensor Surface [mm]	3.0	1.4
Graded Grid	N/A	Yes
M2/M1 [%]		85.2
Dist 3dB Peak [mm]		21.3

## Measurement Results

	Area Scan	Zoom Scan
psSAR1g [W/Kg]	0.527	<b>0.534</b>
psSAR10g [W/Kg]	0.350	<b>0.354</b>
Power Drift [dB]	N/A	-0.01





# Measurement Report for Band n14: 5G NR (DFT-s-OFDM, 50% RB, 10 MHz, QPSK, 15 kHz) RBPosition:Mid AntennaCfg:SISO, CHEEK

## Exposure Conditions

Band	Band n14	TSL Permittivity	41.2
Frequency [MHz]   Channel Number	793.000   158600	TSL Conductivity [S/m]	0.889
Group   UID	5G NR FR1 FDD   10937-AAD	Phantom Section   TSL	RightHead   HSL
Conversion Factor	10.62	Test Distance [mm]	0.00

## Hardware Setup

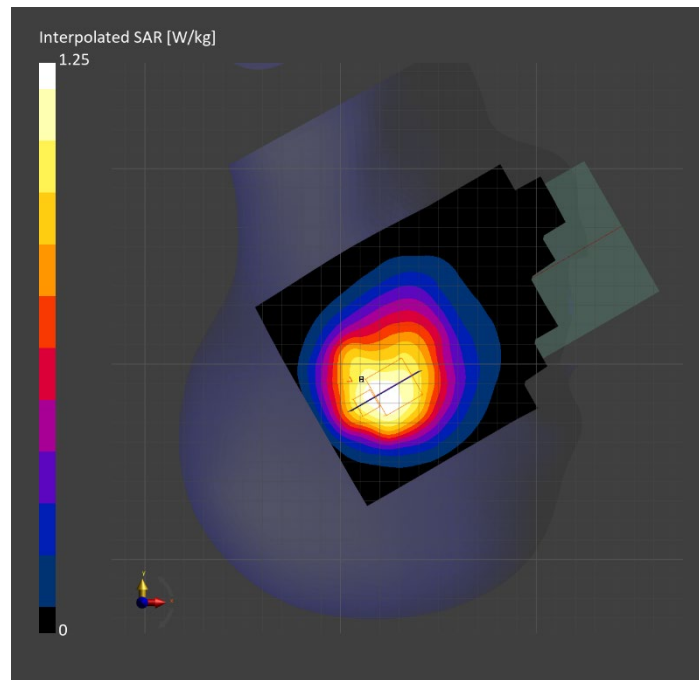
Probe   Calibration Date	EX3DV4 - SN7589   2023-04-18	Phantom	Twin-SAM V5.0 (30deg probe tilt)
DAE   Calibration Date	DAE4 Sn1544   2023-01-24	TSL Type	HBBL-600-10000
Software Version	16.2.4.2524		

## Scan Setup

	Area Scan	Zoom Scan
Grid Extents [mm]	120.0 x 210.0	30.0 x 30.0 x 30.0
Grid Steps [mm]	15.0 x 15.0	6.0 x 6.0 x 1.5
Sensor Surface [mm]	3.0	1.4
Graded Grid	N/A	Yes
M2/M1 [%]		73.9
Dist 3dB Peak [mm]		11.1

## Measurement Results

	Area Scan	Zoom Scan
psSAR1g [W/Kg]	0.605	<b>0.603</b>
psSAR10g [W/Kg]	0.413	<b>0.418</b>
Power Drift [dB]	N/A	0.01



# Measurement Report for Band n14: 5G NR (DFT-s-OFDM, 1 RB, 10 MHz, QPSK, 15 kHz) RBPosition:Mid AntennaCfg:SISO, BACK

## Exposure Conditions

Band	Band n14	TSL Permittivity	41.8
Frequency [MHz]   Channel Number	793.000   158600	TSL Conductivity [S/m]	0.892
Group   UID	5G NR FR1 FDD   10929-AAD	Phantom Section   TSL	Flat   HSL
Conversion Factor	10.62	Test Distance [mm]	5.00

## Hardware Setup

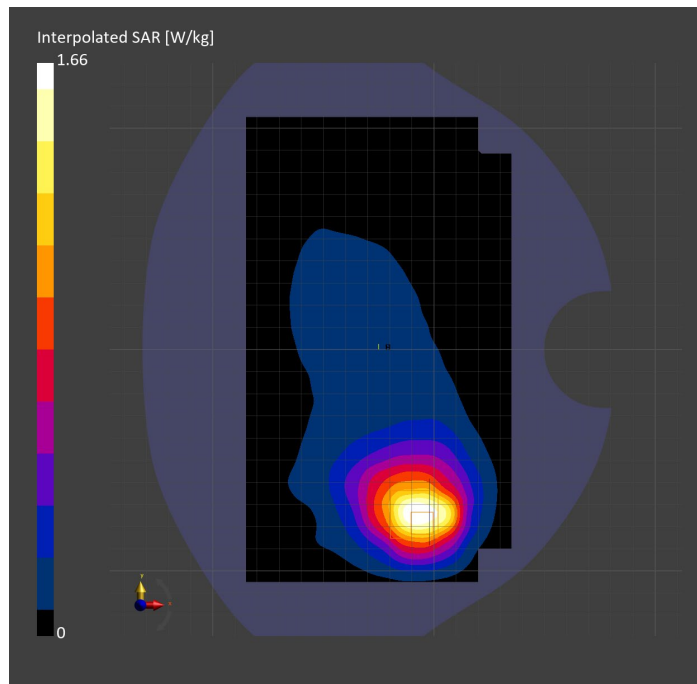
Probe   Calibration Date	EX3DV4 - SN7589   2023-04-18	Phantom	Twin-SAM V5.0 (30deg probe tilt)
DAE   Calibration Date	DAE4 Sn1544   2023-01-24	TSL Type	HBBL-600-10000
Software Version	16.2.4.2524		

## Scan Setup

	Area Scan	Zoom Scan
Grid Extents [mm]	120.0 x 210.0	30.0 x 30.0 x 30.0
Grid Steps [mm]	15.0 x 15.0	6.0 x 6.0 x 1.5
Sensor Surface [mm]	3.0	1.4
Graded Grid	N/A	Yes
M2/M1 [%]		69.5
Dist 3dB Peak [mm]		8.7

## Measurement Results

	Area Scan	Zoom Scan
psSAR1g [W/Kg]	0.710	<b>0.676</b>
psSAR10g [W/Kg]	0.444	<b>0.372</b>
Power Drift [dB]	N/A	-0.04



# Measurement Report for Band n25: 5G NR (DFT-s-OFDM, 50% RB, 40 MHz, QPSK, 15 kHz) RBPosition:Mid AntennaCfg:SISO, BACK

## Exposure Conditions

Band	Band n25	TSL Permittivity	40.0
Frequency [MHz]   Channel Number	1882.500   376500	TSL Conductivity [S/m]	1.43
Group   UID	5G NR FR1 FDD   10942-AAC	Phantom Section   TSL	Flat   HSL
Conversion Factor	7.53	Test Distance [mm]	5.00

## Hardware Setup

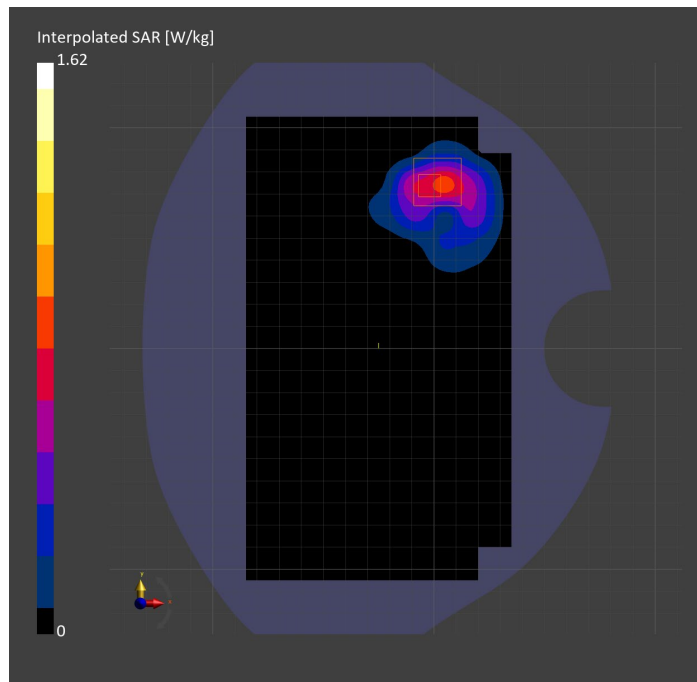
Probe   Calibration Date	EX3DV4 - SN7807   2023-04-11	Phantom	Twin-SAM V8.0 (30deg probe tilt)
DAE   Calibration Date	DAE4 Sn1799   2023-04-04	TSL Type	HBBL-600-10000
Software Version	16.2.4.2524		

## Scan Setup

	Area Scan	Zoom Scan
Grid Extents [mm]	120.0 x 210.0	30.0 x 30.0 x 30.0
Grid Steps [mm]	15.0 x 15.0	6.0 x 6.0 x 1.5
Sensor Surface [mm]	3.0	1.4
Graded Grid	N/A	Yes
M2/M1 [%]		77.2
Dist 3dB Peak [mm]		8.1

## Measurement Results

	Area Scan	Zoom Scan
psSAR1g [W/Kg]	0.680	<b>0.748</b>
psSAR10g [W/Kg]	0.355	<b>0.345</b>
Power Drift [dB]	N/A	0.04



# Measurement Report for Band n25: 5G NR (DFT-s-OFDM, 1 RB, 40 MHz, QPSK, 15 kHz) RBPosition:Mid AntennaCfg:SISO, CHEEK

## Exposure Conditions

Band	Band n25	TSL Permittivity	38.2
Frequency [MHz]   Channel Number	1882.500   376500	TSL Conductivity [S/m]	1.39
Group   UID	5G NR FR1 FDD   10934-AAC	Phantom Section   TSL	LeftHead   HSL
Conversion Factor	7.53	Test Distance [mm]	0.00

## Hardware Setup

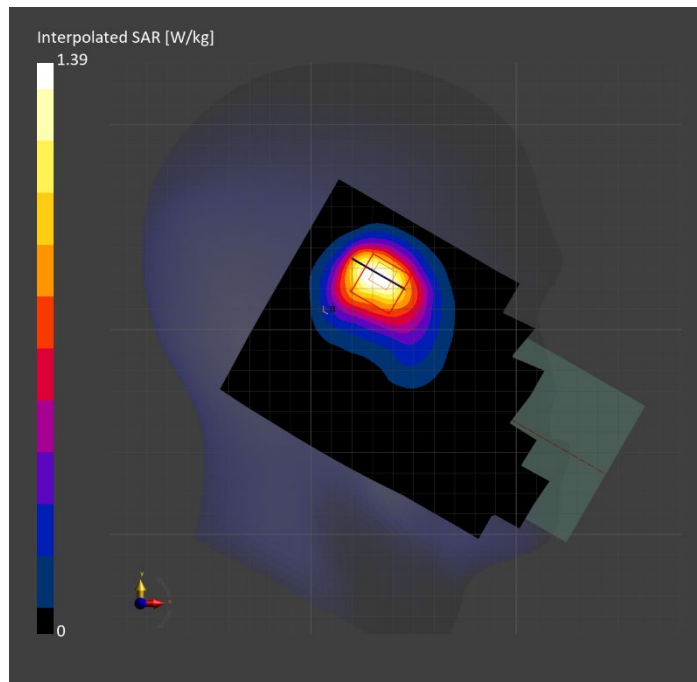
Probe   Calibration Date	EX3DV4 - SN7807   2023-04-11	Phantom	Twin-SAM V8.0 (30deg probe tilt)
DAE   Calibration Date	DAE4 Sn1799   2023-04-04	TSL Type	HBBL-600-10000
Software Version	16.2.4.2524		

## Scan Setup

	Area Scan	Zoom Scan
Grid Extents [mm]	120.0 x 210.0	30.0 x 30.0 x 30.0
Grid Steps [mm]	15.0 x 15.0	6.0 x 6.0 x 1.5
Sensor Surface [mm]	3.0	1.4
Graded Grid	N/A	Yes
M2/M1 [%]		87.1
Dist 3dB Peak [mm]		8.5

## Measurement Results

	Area Scan	Zoom Scan
psSAR1g [W/Kg]	0.761	<b>0.750</b>
psSAR10g [W/Kg]	0.430	<b>0.421</b>
Power Drift [dB]	N/A	-0.03



# Measurement Report for Band n25: 5G NR (DFT-s-OFDM, 50% RB, 40 MHz, QPSK, 15 kHz) RBPosition:Mid AntennaCfg:SISO, EDGE RIGHT

## Exposure Conditions

Band	Band n25	TSL Permittivity	38.2
Frequency [MHz]   Channel Number	1882.500   376500	TSL Conductivity [S/m]	1.39
Group   UID	5G NR FR1 FDD   10942-AAC	Phantom Section   TSL	Flat   HSL
Conversion Factor	7.53	Test Distance [mm]	5.00

## Hardware Setup

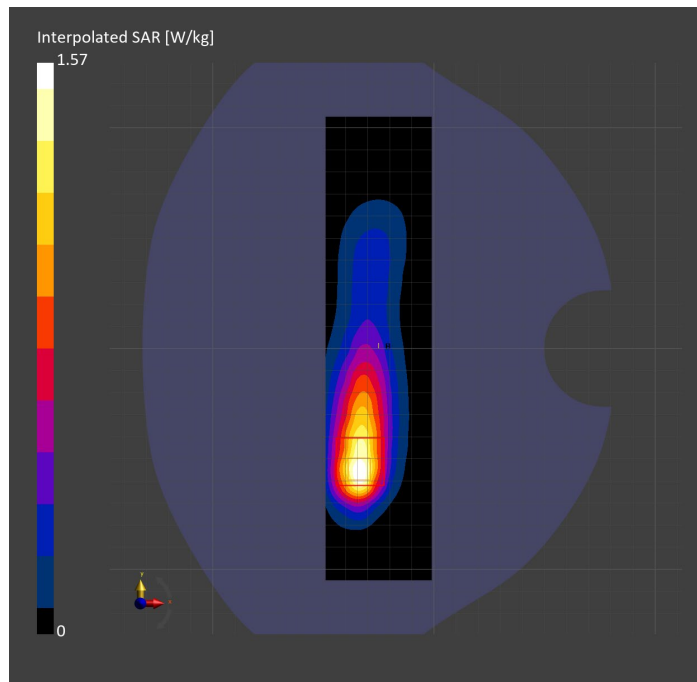
Probe   Calibration Date	EX3DV4 - SN7807   2023-04-11	Phantom	Twin-SAM V8.0 (30deg probe tilt)
DAE   Calibration Date	DAE4 Sn1799   2023-04-04	TSL Type	HBBL-600-10000
Software Version	16.2.4.2524		

## Scan Setup

	Area Scan	Zoom Scan
Grid Extents [mm]	48.0 x 210.0	30.0 x 30.0 x 30.0
Grid Steps [mm]	8.0 x 15.0	6.0 x 6.0 x 1.5
Sensor Surface [mm]	3.0	1.4
Graded Grid	N/A	Yes
M2/M1 [%]		77.9
Dist 3dB Peak [mm]		8.5

## Measurement Results

	Area Scan	Zoom Scan
psSAR1g [W/Kg]	0.748	<b>0.731</b>
psSAR10g [W/Kg]	0.381	<b>0.365</b>
Power Drift [dB]	N/A	0.02



# Measurement Report for Band n26: 5G NR (DFT-s-OFDM, 1 RB, 20 MHz, QPSK, 15 kHz) RBPosition:Mid AntennaCfg:SISO, BACK

## Exposure Conditions

Band	Band n26	TSL Permittivity	41.4
Frequency [MHz]   Channel Number	831.500   166300	TSL Conductivity [S/m]	0.872
Group   UID	5G NR FR1 FDD   10931-AAC	Phantom Section   TSL	Flat   HSL
Conversion Factor	8.76	Test Distance [mm]	5.00

## Hardware Setup

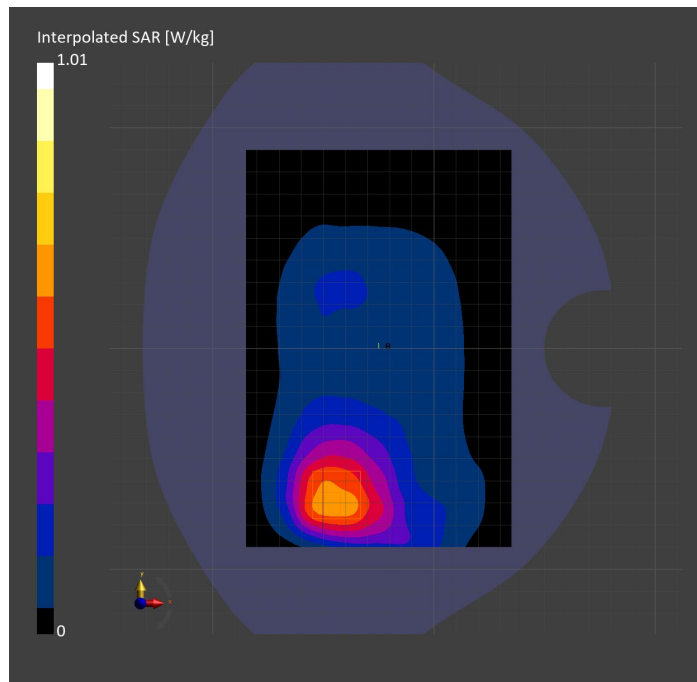
Probe   Calibration Date	EX3DV4 - SN7806   2023-04-04	Phantom	Twin-SAM V8.0 (30deg probe tilt)
DAE   Calibration Date	DAE4 Sn1784   2023-04-03	TSL Type	HBBL-600-10000
Software Version	16.2.4.2524		

## Scan Setup

	Area Scan	Zoom Scan
Grid Extents [mm]	120.0 x 180.0	30.0 x 30.0 x 30.0
Grid Steps [mm]	15.0 x 15.0	6.0 x 6.0 x 1.5
Sensor Surface [mm]	3.0	1.4
Graded Grid	N/A	Yes
M2/M1 [%]		83.0
Dist 3dB Peak [mm]		12.3

## Measurement Results

	Area Scan	Zoom Scan
psSAR1g [W/Kg]	0.580	<b>0.592</b>
psSAR10g [W/Kg]	0.382	<b>0.386</b>
Power Drift [dB]	N/A	-0.07



# Measurement Report for Band n26: 5G NR (DFT-s-OFDM, 50% RB, 20 MHz, QPSK, 15 kHz) RBPosition:Mid AntennaCfg:SISO, CHEEK

## Exposure Conditions

Band	Band n26	TSL Permittivity	41.1
Frequency [MHz]   Channel Number	831.500   166300	TSL Conductivity [S/m]	0.867
Group   UID	5G NR FR1 FDD   10939-AAC	Phantom Section   TSL	RightHead   HSL
Conversion Factor	7.83	Test Distance [mm]	0.00

## Hardware Setup

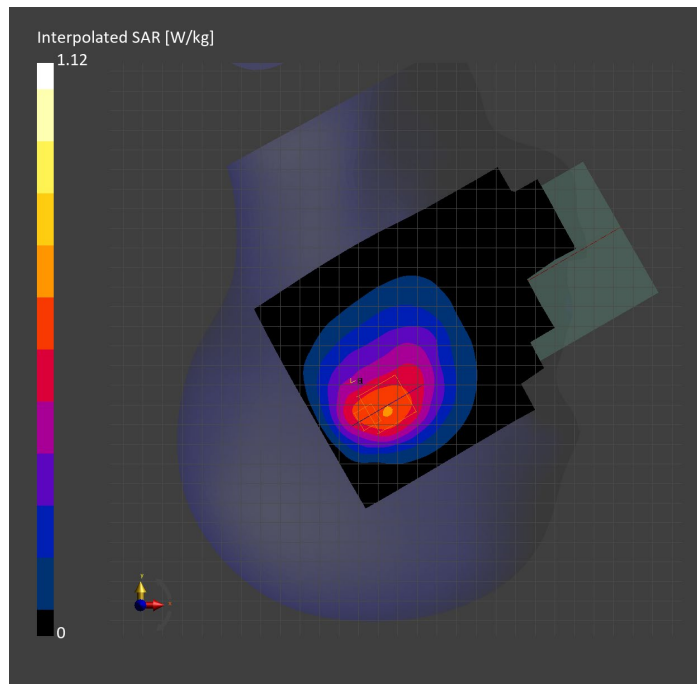
Probe   Calibration Date	EX3DV4 - SN3749   2023-01-27	Phantom	Twin-SAM V8.0 (30deg probe tilt)
DAE   Calibration Date	DAE4 Sn1357   2023-01-27	TSL Type	HBBL-600-10000
Software Version	16.2.4.2524		

## Scan Setup

	Area Scan	Zoom Scan
Grid Extents [mm]	120.0 x 210.0	30.0 x 30.0 x 30.0
Grid Steps [mm]	15.0 x 15.0	6.0 x 6.0 x 1.5
Sensor Surface [mm]	3.0	1.4
Graded Grid	N/A	Yes
M2/M1 [%]		79.3
Dist 3dB Peak [mm]		8.7

## Measurement Results

	Area Scan	Zoom Scan
psSAR1g [W/Kg]	0.564	<b>0.604</b>
psSAR10g [W/Kg]	0.380	<b>0.393</b>
Power Drift [dB]	N/A	0.01



# Measurement Report for Band n26: 5G NR (DFT-s-OFDM, 1 RB, 20 MHz, QPSK, 15 kHz) RBPosition:Mid AntennaCfg:SISO, EDGE BOTTOM

## Exposure Conditions

Band	Band n26	TSL Permittivity	42.1
Frequency [MHz]   Channel Number	831.500   166300	TSL Conductivity [S/m]	0.897
Group   UID	5G NR FR1 FDD   10931-AAC	Phantom Section   TSL	Flat   HSL
Conversion Factor	8.76	Test Distance [mm]	5.00

## Hardware Setup

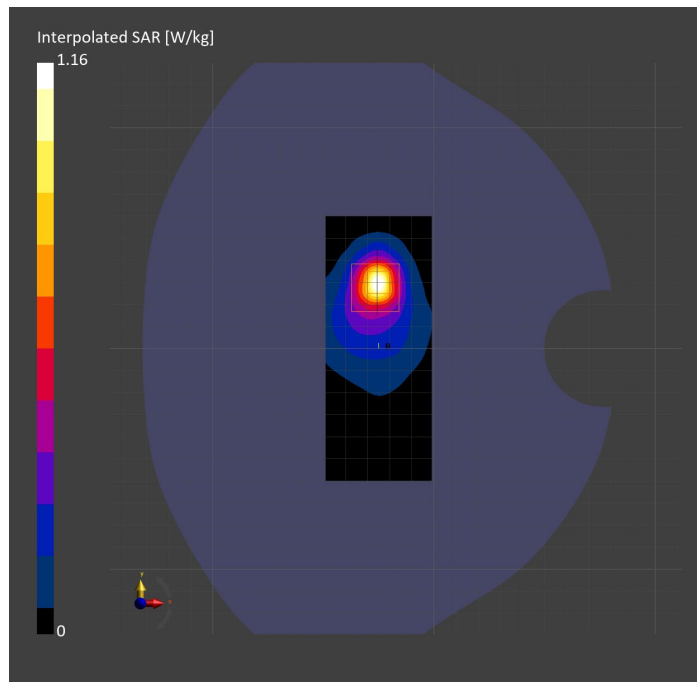
Probe   Calibration Date	EX3DV4 - SN7806   2023-04-04	Phantom	Twin-SAM V8.0 (30deg probe tilt)
DAE   Calibration Date	DAE4 Sn1784   2023-04-03	TSL Type	HBBL-600-10000
Software Version	16.2.4.2524		

## Scan Setup

	Area Scan	Zoom Scan
Grid Extents [mm]	48.0 x 120.0	30.0 x 30.0 x 30.0
Grid Steps [mm]	8.0 x 15.0	6.0 x 6.0 x 1.5
Sensor Surface [mm]	3.0	1.4
Graded Grid	N/A	Yes
M2/M1 [%]		53.8
Dist 3dB Peak [mm]		7.2

## Measurement Results

	Area Scan	Zoom Scan
psSAR1g [W/Kg]	0.276	<b>0.299</b>
psSAR10g [W/Kg]	0.137	<b>0.113</b>
Power Drift [dB]	N/A	0.04





# Measurement Report for Band n30: 5G NR (DFT-s-OFDM, 1 RB, 10 MHz, QPSK, 15 kHz) RBPosition:Mid AntennaCfg:SISO, CHEEK

## Exposure Conditions

Band	Band n30	TSL Permittivity	41.1
Frequency [MHz]   Channel Number	2310.000   462000	TSL Conductivity [S/m]	1.71
Group   UID	5G NR FR1 FDD   10929-AAD	Phantom Section   TSL	RightHead   HSL
Conversion Factor	7.71	Test Distance [mm]	0.00

## Hardware Setup

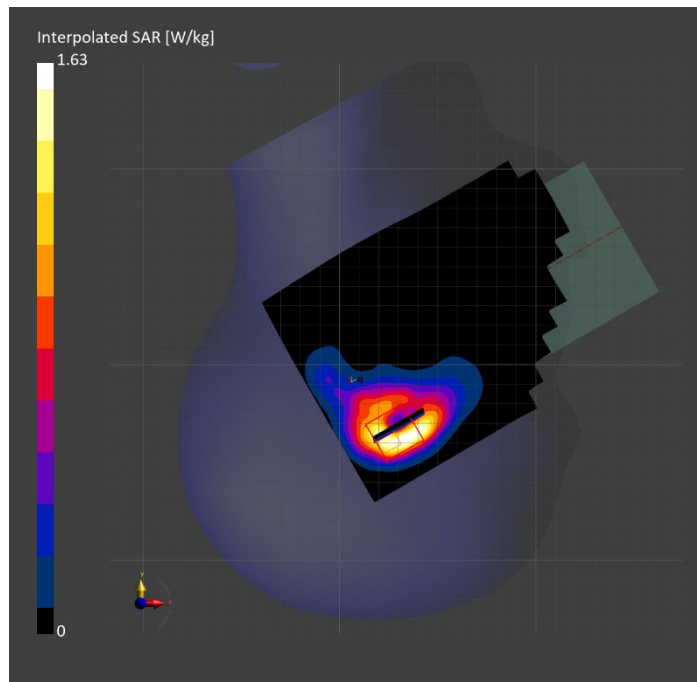
Probe   Calibration Date	EX3DV4 - SN7482   2023-04-18	Phantom	Twin-SAM V8.0 (30deg probe tilt)
DAE   Calibration Date	DAE4 Sn1380   2023-02-14	TSL Type	HBBL-600-10000
Software Version	16.2.4.2524		

## Scan Setup

	Area Scan	Zoom Scan
Grid Extents [mm]	120.0 x 200.0	30.0 x 30.0 x 30.0
Grid Steps [mm]	10.0 x 10.0	5.0 x 5.0 x 1.5
Sensor Surface [mm]	3.0	1.4
Graded Grid	N/A	Yes
M2/M1 [%]		75.7
Dist 3dB Peak [mm]		5.7

## Measurement Results

	Area Scan	Zoom Scan
psSAR1g [W/Kg]	0.636	<b>0.712</b>
psSAR10g [W/Kg]	0.324	<b>0.324</b>
Power Drift [dB]	N/A	0.02



# Measurement Report for Band n30: 5G NR (DFT-s-OFDM, 1 RB, 10 MHz, QPSK, 15 kHz) RBPosition:Mid AntennaCfg:SISO, BACK

## Exposure Conditions

Band	Band n30	TSL Permittivity	38.6
Frequency [MHz]   Channel Number	2310.000   462000	TSL Conductivity [S/m]	1.68
Group   UID	5G NR FR1 FDD   10929-AAD	Phantom Section   TSL	Flat   HSL
Conversion Factor	7.71	Test Distance [mm]	5.00

## Hardware Setup

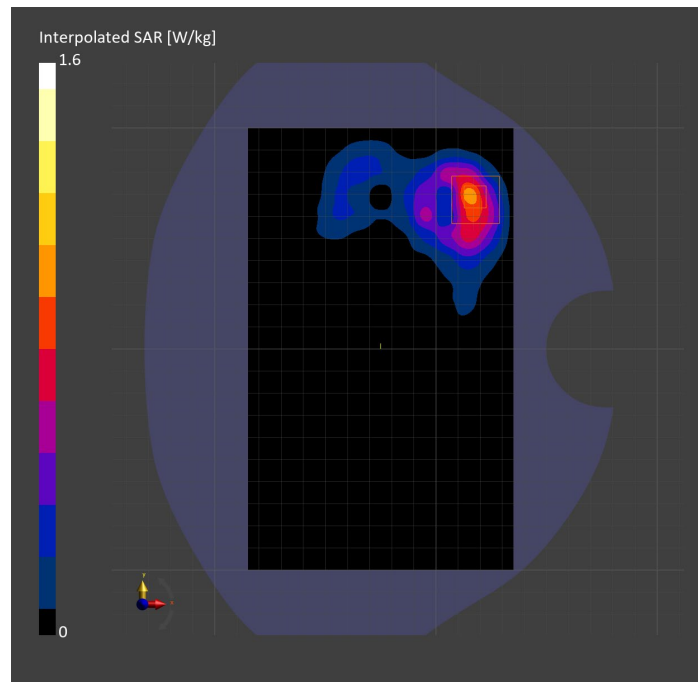
Probe   Calibration Date	EX3DV4 - SN7482   2023-04-18	Phantom	Twin-SAM V8.0 (30deg probe tilt)
DAE   Calibration Date	DAE4 Sn1380   2023-02-14	TSL Type	HBBL-600-10000
Software Version	16.2.4.2524		

## Scan Setup

	Area Scan	Zoom Scan
Grid Extents [mm]	120.0 x 200.0	30.0 x 30.0 x 30.0
Grid Steps [mm]	10.0 x 10.0	5.0 x 5.0 x 1.5
Sensor Surface [mm]	3.0	1.4
Graded Grid	N/A	Yes
M2/M1 [%]		83.3
Dist 3dB Peak [mm]		5.9

## Measurement Results

	Area Scan	Zoom Scan
psSAR1g [W/Kg]	0.747	<b>0.762</b>
psSAR10g [W/Kg]	0.353	<b>0.338</b>
Power Drift [dB]	N/A	0.03



# Measurement Report for Band n30: 5G NR (DFT-s-OFDM, 1 RB, 10 MHz, QPSK, 15 kHz) RBPosition:Mid AntennaCfg:SISO, EDGE LEFT

## Exposure Conditions

Band	Band n30	TSL Permittivity	40.2
Frequency [MHz]   Channel Number	2310.000   462000	TSL Conductivity [S/m]	1.63
Group   UID	5G NR FR1 FDD   10929-AAD	Phantom Section   TSL	Flat   HSL
Conversion Factor	7.71	Test Distance [mm]	5.00

## Hardware Setup

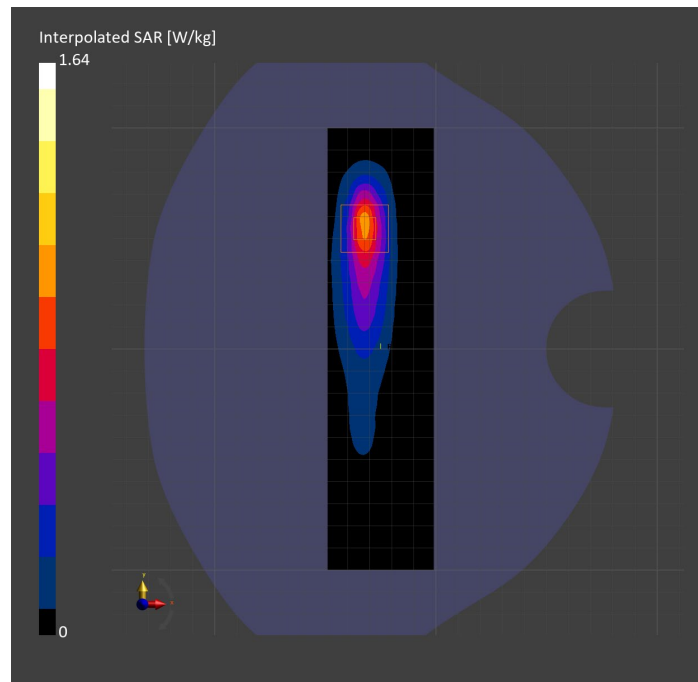
Probe   Calibration Date	EX3DV4 - SN7482   2023-04-18	Phantom	Twin-SAM V8.0 (30deg probe tilt)
DAE   Calibration Date	DAE4 Sn1380   2023-02-14	TSL Type	HBBL-600-10000
Software Version	16.2.4.2524		

## Scan Setup

	Area Scan	Zoom Scan
Grid Extents [mm]	48.0 x 200.0	30.0 x 30.0 x 30.0
Grid Steps [mm]	8.0 x 10.0	5.0 x 5.0 x 1.5
Sensor Surface [mm]	3.0	1.4
Graded Grid	N/A	Yes
M2/M1 [%]		80.1
Dist 3dB Peak [mm]		7.0

## Measurement Results

	Area Scan	Zoom Scan
psSAR1g [W/Kg]	0.751	<b>0.760</b>
psSAR10g [W/Kg]	0.335	<b>0.339</b>
Power Drift [dB]	N/A	-0.00



# Measurement Report for Band n41: 5G NR (DFT-s-OFDM, 50% RB, 100 MHz, QPSK, 30 kHz) RBPosition:Mid AntennaCfg:SISO, BACK

## Exposure Conditions

Band	Band n41	TSL Permittivity	40.2
Frequency [MHz]   Channel Number	2592.990   518598	TSL Conductivity [S/m]	1.96
Group   UID	5G NR FR1 TDD   10917-AAD	Phantom Section   TSL	Flat   HSL
Conversion Factor	7.33	Test Distance [mm]	5.00

## Hardware Setup

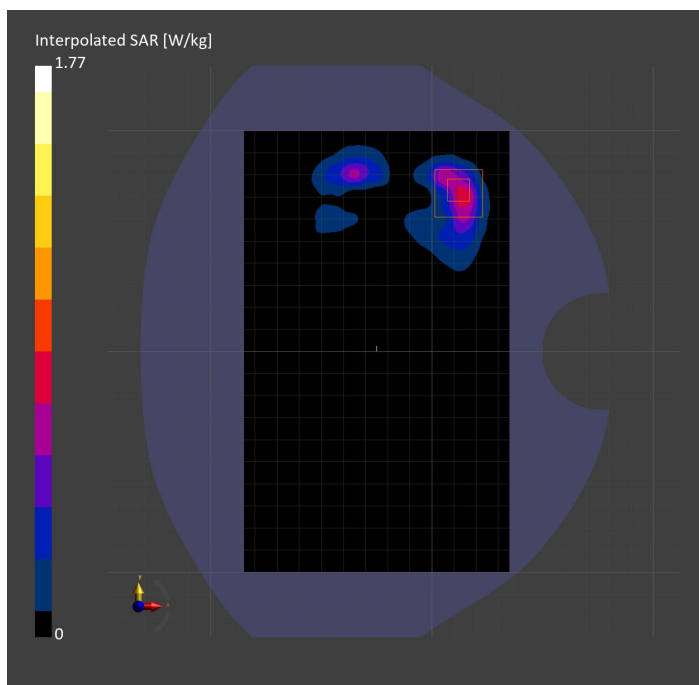
Probe   Calibration Date	EX3DV4 - SN7808   2023-04-18	Phantom	Twin-SAM V8.0 (30deg probe tilt)
DAE   Calibration Date	DAE4 Sn1796   2023-04-03	TSL Type	HBBL-600-10000
Software Version	16.2.4.2524		

## Scan Setup

	Area Scan	Zoom Scan
Grid Extents [mm]	120.0 x 200.0	30.0 x 30.0 x 30.0
Grid Steps [mm]	10.0 x 10.0	4.5 x 4.5 x 1.5
Sensor Surface [mm]	3.0	1.4
Graded Grid	N/A	Yes
M2/M1 [%]		75.8
Dist 3dB Peak [mm]		5.8

## Measurement Results

	Area Scan	Zoom Scan
psSAR1g [W/Kg]	0.601	<b>0.747</b>
psSAR10g [W/Kg]	0.260	<b>0.300</b>
Power Drift [dB]	N/A	-0.00



# Measurement Report for Band n41: 5G NR (DFT-s-OFDM, 1 RB, 100 MHz, QPSK, 30 kHz) RBPosition:Mid AntennaCfg:SISO, CHEEK

## Exposure Conditions

<b>Band</b>	Band n41	<b>TSL Permittivity</b>	39.4
<b>Frequency [MHz]   Channel Number</b>	2592.990   518598	<b>TSL Conductivity [S/m]</b>	1.89
<b>Group   UID</b>	5G NR FR1 TDD   10866-AAF	<b>Phantom Section   TSL</b>	LeftHead   HSL
<b>Conversion Factor</b>	7.32	<b>Test Distance [mm]</b>	0.00

## Hardware Setup

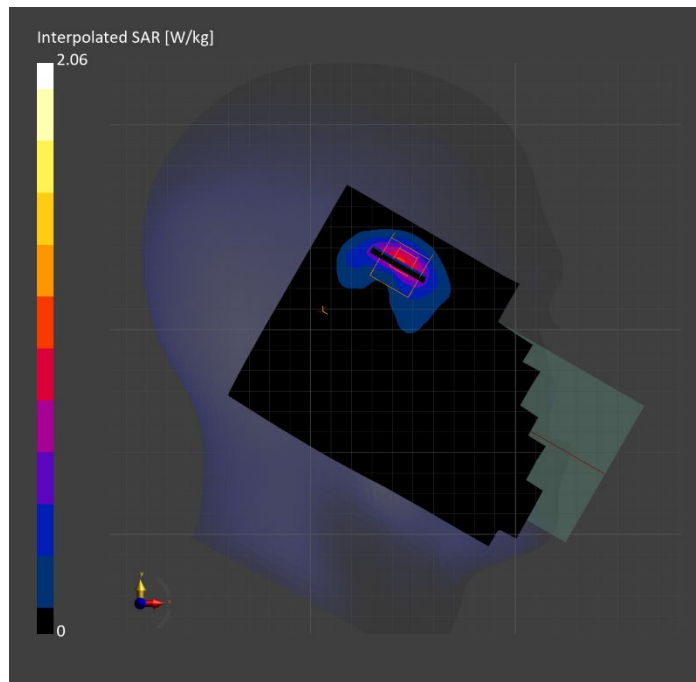
<b>Probe   Calibration Date</b>	EX3DV4 - SN3885   2022-09-20	<b>Phantom</b>	Twin-SAM V5.0 (30deg probe tilt)
<b>DAE   Calibration Date</b>	DAE4 Sn1548   2023-02-14	<b>TSL Type</b>	HBBL-600-10000
<b>Software Version</b>	16.2.4.2524		

## Scan Setup

	Area Scan	Zoom Scan
<b>Grid Extents [mm]</b>	120.0 x 200.0	30.0 x 30.0 x 30.0
<b>Grid Steps [mm]</b>	10.0 x 10.0	5.0 x 5.0 x 1.5
<b>Sensor Surface [mm]</b>	3.0	1.4
<b>Graded Grid</b>	N/A	Yes
<b>M2/M1 [%]</b>		71.8
<b>Dist 3dB Peak [mm]</b>		5.1

## Measurement Results

	Area Scan	Zoom Scan
<b>psSAR1g [W/Kg]</b>	0.747	<b>0.774</b>
<b>psSAR10g [W/Kg]</b>	0.325	<b>0.316</b>
<b>Power Drift [dB]</b>	N/A	-0.00



# Measurement Report for Band n41: 5G NR (DFT-s-OFDM, 1 RB, 100 MHz, QPSK, 30 kHz) RBPosition:Mid AntennaCfg:SISO, EDGE RIGHT

## Exposure Conditions

Band	Band n41	TSL Permittivity	39.4
Frequency [MHz]   Channel Number	2592.990   518598	TSL Conductivity [S/m]	1.89
Group   UID	5G NR FR1 TDD   10866-AAF	Phantom Section   TSL	Flat   HSL
Conversion Factor	7.32	Test Distance [mm]	5.00

## Hardware Setup

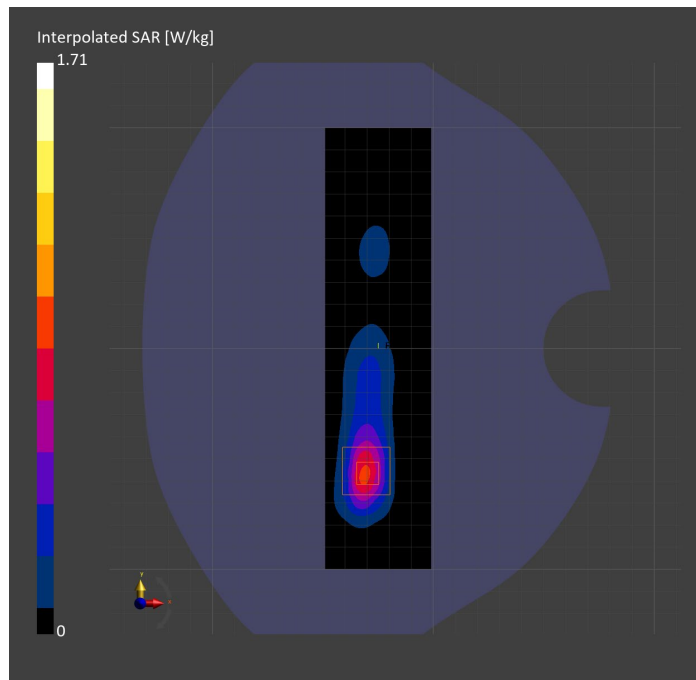
Probe   Calibration Date	EX3DV4 - SN3885   2022-09-20	Phantom	Twin-SAM V5.0 (30deg probe tilt)
DAE   Calibration Date	DAE4 Sn1548   2023-02-14	TSL Type	HBBL-600-10000
Software Version	16.2.4.2524		

## Scan Setup

	Area Scan	Zoom Scan
Grid Extents [mm]	48.0 x 200.0	30.0 x 30.0 x 30.0
Grid Steps [mm]	8.0 x 10.0	5.0 x 5.0 x 1.5
Sensor Surface [mm]	3.0	1.4
Graded Grid	N/A	Yes
M2/M1 [%]		77.8
Dist 3dB Peak [mm]		7.0

## Measurement Results

	Area Scan	Zoom Scan
psSAR1g [W/Kg]	0.671	<b>0.727</b>
psSAR10g [W/Kg]	0.291	<b>0.297</b>
Power Drift [dB]	N/A	-0.14



# Measurement Report for Band n48: 5G NR (DFT-s-OFDM, 50% RB, 40 MHz, QPSK, 30 kHz) RBPosition:Mid AntennaCfg:SISO, EDGE RIGHT

## Exposure Conditions

Band	Band n48	TSL Permittivity	38.9
Frequency [MHz]   Channel Number	3643.315   642888	TSL Conductivity [S/m]	3.14
Group   UID	5G NR FR1 TDD   10913-AAD	Phantom Section   TSL	Flat   HSL
Conversion Factor	6.92	Test Distance [mm]	5.00

## Hardware Setup

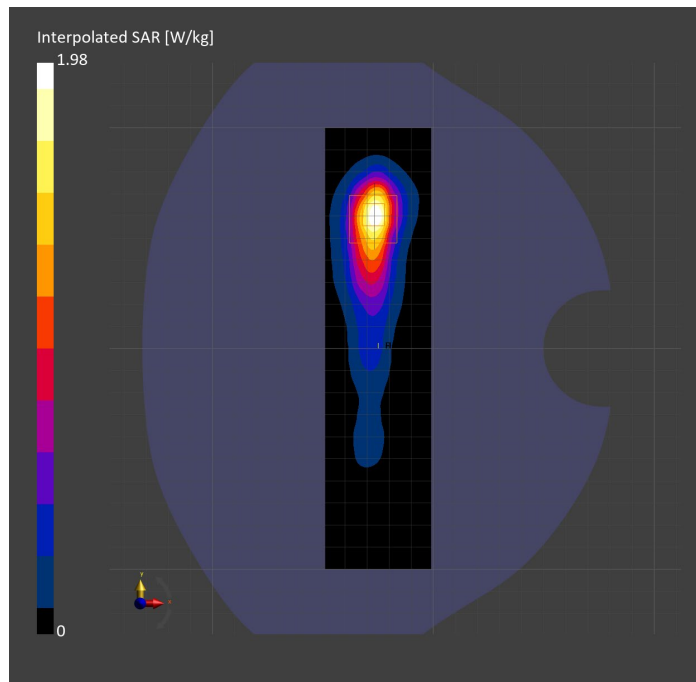
Probe   Calibration Date	EX3DV4 - SN7335   2023-01-26	Phantom	Twin-SAM V8.0 (30deg probe tilt)
DAE   Calibration Date	DAE4ip Sn1619   2023-04-18	TSL Type	HBBL-600-10000
Software Version	16.2.4.2524		

## Scan Setup

	Area Scan	Zoom Scan
Grid Extents [mm]	48.0 x 200.0	30.0 x 30.0 x 28.0
Grid Steps [mm]	8.0 x 10.0	5.0 x 5.0 x 1.4
Sensor Surface [mm]	3.0	1.4
Graded Grid	N/A	Yes
M2/M1 [%]		72.8
Dist 3dB Peak [mm]		8.0

## Measurement Results

	Area Scan	Zoom Scan
psSAR1g [W/Kg]	0.722	<b>0.721</b>
psSAR10g [W/Kg]	0.285	<b>0.277</b>
Power Drift [dB]	N/A	0.02



# Measurement Report for Band n48: 5G NR (DFT-s-OFDM, 1 RB, 40 MHz, QPSK, 30 kHz) RBPosition:Mid AntennaCfg:SISO, CHEEK

## Exposure Conditions

Band	Band n48	TSL Permittivity	38.9
Frequency [MHz]   Channel Number	3643.315   642888	TSL Conductivity [S/m]	3.06
Group   UID	5G NR FR1 TDD   10903-AAD	Phantom Section   TSL	RightHead   HSL
Conversion Factor	6.66	Test Distance [mm]	0.00

## Hardware Setup

Probe   Calibration Date	EX3DV4 - SN3990   2023-02-17	Phantom	Twin-SAM V5.0 (30deg probe tilt)
DAE   Calibration Date	DAE4 Sn1545   2023-02-14	TSL Type	HBBL-600-10000
Software Version	16.2.4.2524		

## Scan Setup

	Area Scan	Zoom Scan
Grid Extents [mm]	120.0 x 200.0	30.0 x 30.0 x 28.0
Grid Steps [mm]	10.0 x 10.0	5.0 x 5.0 x 1.4
Sensor Surface [mm]	3.0	1.4
Graded Grid	N/A	Yes
M2/M1 [%]		72.4
Dist 3dB Peak [mm]		5.1

## Measurement Results

	Area Scan	Zoom Scan
psSAR1g [W/Kg]	0.711	<b>0.771</b>
psSAR10g [W/Kg]	0.270	<b>0.264</b>
Power Drift [dB]	N/A	0.01

