

Measurement Report for Band n48: 5G NR (DFT-s-OFDM, 50% RB, 40 MHz, QPSK, 30 kHz) RBPosition:Mid AntennaCfg:SISO, BACK

Exposure Conditions

Band	Band n48	TSL Permittivity	36.7
Frequency [MHz] Channel Number	3643.315 642888	TSL Conductivity [S/m]	2.94
Group UID	5G NR FR1 TDD 10913-AAD	Phantom Section TSL	Flat HSL
Conversion Factor	6.92	Test Distance [mm]	5.00

Hardware Setup

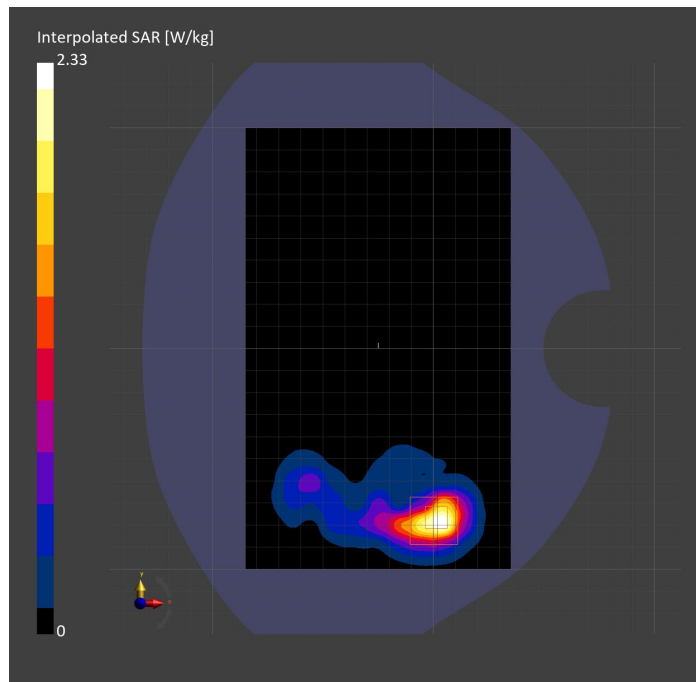
Probe Calibration Date	EX3DV4 - SN7335 2023-01-26	Phantom	Twin-SAM V8.0 (30deg probe tilt)
DAE Calibration Date	DAE4ip Sn1619 2023-04-18	TSL Type	HBBL-600-10000
Software Version	16.2.4.2524		

Scan Setup

	Area Scan	Zoom Scan
Grid Extents [mm]	120.0 x 200.0	30.0 x 30.0 x 28.0
Grid Steps [mm]	10.0 x 10.0	5.0 x 5.0 x 1.4
Sensor Surface [mm]	3.0	1.4
Graded Grid	N/A	Yes
M2/M1 [%]		74.3
Dist 3dB Peak [mm]		5.9

Measurement Results

	Area Scan	Zoom Scan
psSAR1g [W/Kg]	0.592	0.808
psSAR10g [W/Kg]	0.227	0.279
Power Drift [dB]	N/A	1.01



Measurement Report for Band n53: 5G NR (DFT-s-OFDM, 1 RB, 10 MHz, QPSK, 30 kHz) RBPosition:Mid AntennaCfg:SISO, EDGE RIGHT

Exposure Conditions

Band	Band n53	TSL Permittivity	37.5
Frequency [MHz] Channel Number	2489.200 497840	TSL Conductivity [S/m]	1.78
Group UID	5G NR FR1 TDD 10898-AAC	Phantom Section TSL	Flat HSL
Conversion Factor	7.64	Test Distance [mm]	5.00

Hardware Setup

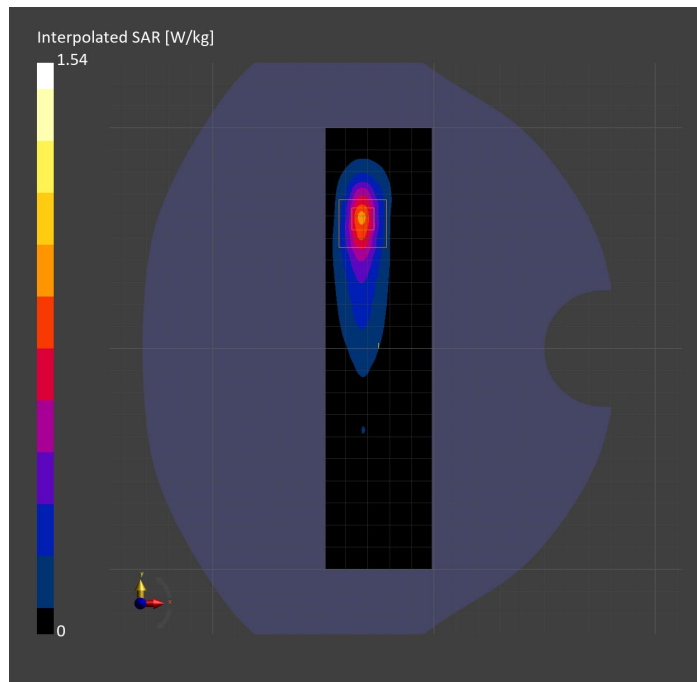
Probe Calibration Date	EX3DV4 - SN7587 2023-04-18	Phantom	Twin-SAM V8.0 (30deg probe tilt)
DAE Calibration Date	DAE4 Sn1239 2023-03-16	TSL Type	HBBL-600-10000
Software Version	16.2.4.2524		

Scan Setup

	Area Scan	Zoom Scan
Grid Extents [mm]	48.0 x 200.0	30.0 x 30.0 x 30.0
Grid Steps [mm]	8.0 x 10.0	5.0 x 5.0 x 1.5
Sensor Surface [mm]	3.0	1.4
Graded Grid	N/A	Yes
M2/M1 [%]		78.8
Dist 3dB Peak [mm]		6.4

Measurement Results

	Area Scan	Zoom Scan
psSAR1g [W/Kg]	0.653	0.675
psSAR10g [W/Kg]	0.269	0.276
Power Drift [dB]	N/A	0.03



Measurement Report for Band n53: 5G NR (DFT-s-OFDM, 50% RB, 10 MHz, QPSK, 30 kHz) RBPosition:Mid AntennaCfg:SISO, CHEEK

Exposure Conditions

Band	Band n53	TSL Permittivity	37.5
Frequency [MHz] Channel Number	2489.200 497840	TSL Conductivity [S/m]	1.78
Group UID	5G NR FR1 TDD 10908-AAC	Phantom Section TSL	RightHead HSL
Conversion Factor	7.64	Test Distance [mm]	0.00

Hardware Setup

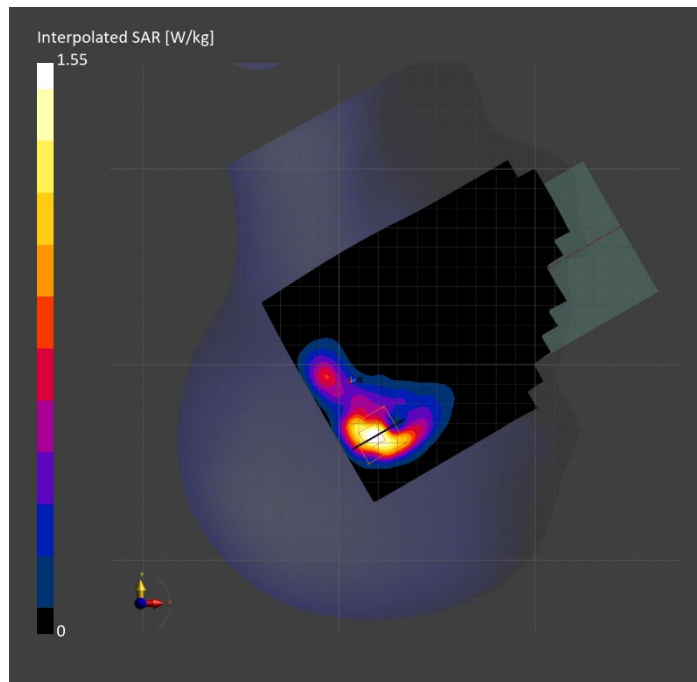
Probe Calibration Date	EX3DV4 - SN7587 2023-04-18	Phantom	Twin-SAM V8.0 (30deg probe tilt)
DAE Calibration Date	DAE4 Sn1239 2023-03-16	TSL Type	HBBL-600-10000
Software Version	16.2.4.2524		

Scan Setup

	Area Scan	Zoom Scan
Grid Extents [mm]	120.0 x 200.0	30.0 x 30.0 x 30.0
Grid Steps [mm]	10.0 x 10.0	5.0 x 5.0 x 1.5
Sensor Surface [mm]	3.0	1.4
Graded Grid	N/A	Yes
M2/M1 [%]		75.1
Dist 3dB Peak [mm]		5.7

Measurement Results

	Area Scan	Zoom Scan
psSAR1g [W/Kg]	0.553	0.630
psSAR10g [W/Kg]	0.248	0.259
Power Drift [dB]	N/A	-0.01



Measurement Report for Band n53: 5G NR (DFT-s-OFDM, 1 RB, 10 MHz, QPSK, 30 kHz) RBPosition:Mid AntennaCfg:SISO, BACK

Exposure Conditions

Band	Band n53	TSL Permittivity	37.5
Frequency [MHz] Channel Number	2489.200 497840	TSL Conductivity [S/m]	1.78
Group UID	5G NR FR1 TDD 10898-AAC	Phantom Section TSL	Flat HSL
Conversion Factor	7.64	Test Distance [mm]	5.00

Hardware Setup

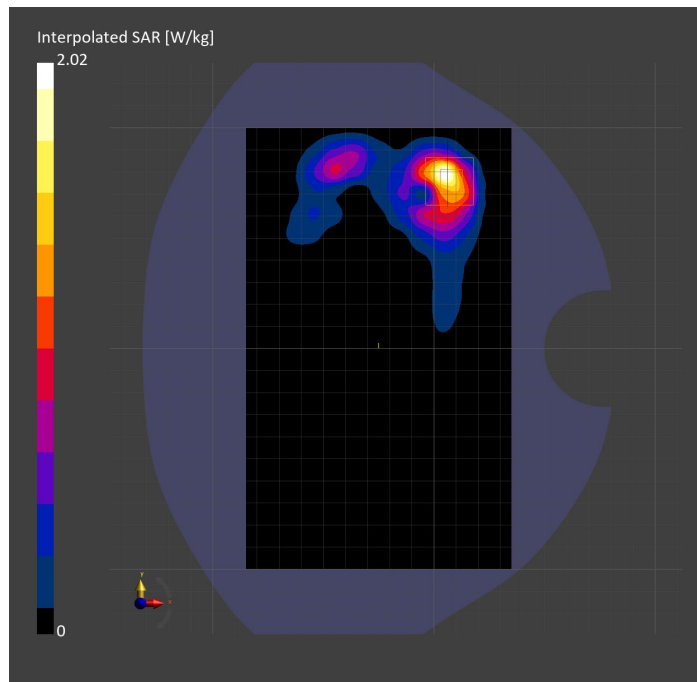
Probe Calibration Date	EX3DV4 - SN7587 2023-04-18	Phantom	Twin-SAM V8.0 (30deg probe tilt)
DAE Calibration Date	DAE4 Sn1239 2023-03-16	TSL Type	HBBL-600-10000
Software Version	16.2.4.2524		

Scan Setup

	Area Scan	Zoom Scan
Grid Extents [mm]	120.0 x 200.0	30.0 x 30.0 x 30.0
Grid Steps [mm]	10.0 x 10.0	5.0 x 5.0 x 1.5
Sensor Surface [mm]	3.0	1.4
Graded Grid	N/A	Yes
M2/M1 [%]		78.3
Dist 3dB Peak [mm]		5.7

Measurement Results

	Area Scan	Zoom Scan
psSAR1g [W/Kg]	0.830	0.873
psSAR10g [W/Kg]	0.356	0.349
Power Drift [dB]	N/A	-0.06



Measurement Report for Band n66: 5G NR (DFT-s-OFDM, 50% RB, 40 MHz, QPSK, 15 kHz) RBPosition:Mid AntennaCfg:SISO, EDGE BOTTOM

Exposure Conditions

Band	Band n66	TSL Permittivity	40.0
Frequency [MHz] Channel Number	1745.000 349000	TSL Conductivity [S/m]	1.31
Group UID	5G NR FR1 FDD 10942-AAC	Phantom Section TSL	Flat HSL
Conversion Factor	8.98	Test Distance [mm]	5.00

Hardware Setup

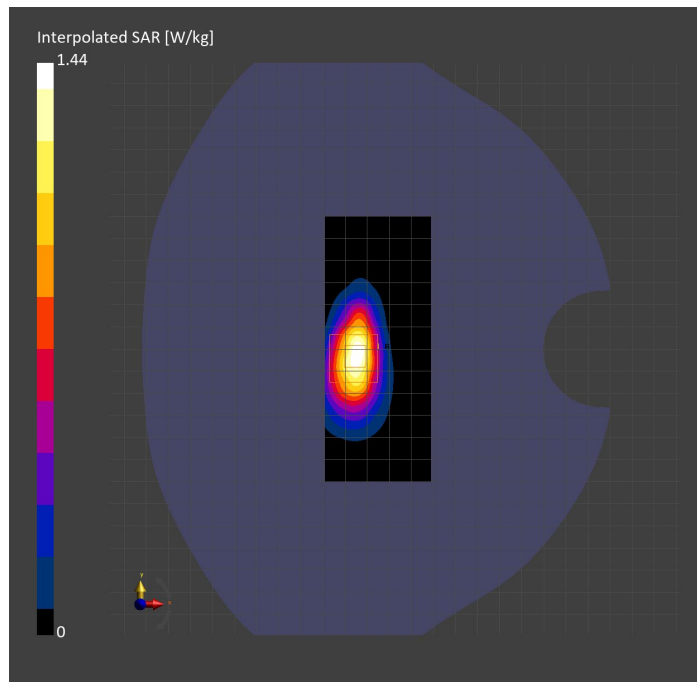
Probe Calibration Date	EX3DV4 - SN3989 2023-01-26	Phantom	Twin-SAM V8.0 (30deg probe tilt)
DAE Calibration Date	DAE4 Sn1257 2022-09-20	TSL Type	HBBL-600-10000
Software Version	16.2.4.2524		

Scan Setup

	Area Scan	Zoom Scan
Grid Extents [mm]	48.0 x 120.0	30.0 x 30.0 x 30.0
Grid Steps [mm]	8.0 x 15.0	6.0 x 6.0 x 1.5
Sensor Surface [mm]	3.0	1.4
Graded Grid	N/A	Yes
M2/M1 [%]		82.7
Dist 3dB Peak [mm]		7.6

Measurement Results

	Area Scan	Zoom Scan
psSAR1g [W/Kg]	0.740	0.751
psSAR10g [W/Kg]	0.372	0.369
Power Drift [dB]	N/A	-0.03



Measurement Report for Band n66: 5G NR (DFT-s-OFDM, 50% RB, 40 MHz, QPSK, 15 kHz) RBPosition:Mid AntennaCfg:SISO, BACK

Exposure Conditions

Band	Band n66	TSL Permittivity	40.0
Frequency [MHz] Channel Number	1745.000 349000	TSL Conductivity [S/m]	1.31
Group UID	5G NR FR1 FDD 10942-AAC	Phantom Section TSL	Flat HSL
Conversion Factor	8.98	Test Distance [mm]	5.00

Hardware Setup

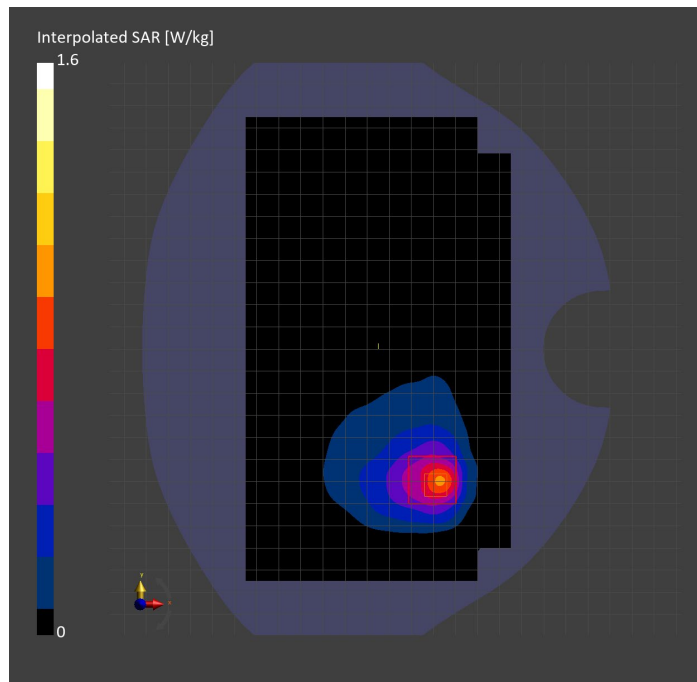
Probe Calibration Date	EX3DV4 - SN3989 2023-01-26	Phantom	Twin-SAM V8.0 (30deg probe tilt)
DAE Calibration Date	DAE4 Sn1257 2022-09-20	TSL Type	HBBL-600-10000
Software Version	16.2.4.2524		

Scan Setup

	Area Scan	Zoom Scan
Grid Extents [mm]	120.0 x 210.0	30.0 x 30.0 x 30.0
Grid Steps [mm]	15.0 x 15.0	6.0 x 6.0 x 1.5
Sensor Surface [mm]	3.0	1.4
Graded Grid	N/A	Yes
M2/M1 [%]		81.0
Dist 3dB Peak [mm]		9.9

Measurement Results

	Area Scan	Zoom Scan
psSAR1g [W/Kg]	0.742	0.797
psSAR10g [W/Kg]	0.386	0.391
Power Drift [dB]	N/A	-0.01



Measurement Report for Band n66: 5G NR (DFT-s-OFDM, 50% RB, 40 MHz, QPSK, 15 kHz) RBPosition:Mid AntennaCfg:SISO, CHEEK

Exposure Conditions

Band	Band n66	TSL Permittivity	41.6
Frequency [MHz] Channel Number	1745.000 349000	TSL Conductivity [S/m]	1.33
Group UID	5G NR FR1 FDD 10942-AAC	Phantom Section TSL	LeftHead HSL
Conversion Factor	8.66	Test Distance [mm]	0.00

Hardware Setup

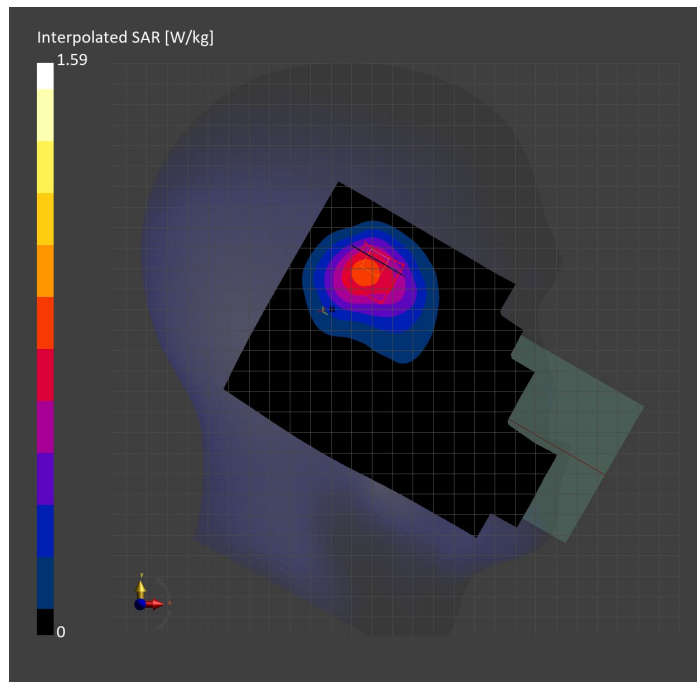
Probe Calibration Date	EX3DV4 - SN7569 2023-04-18	Phantom	Twin-SAM V8.0 (30deg probe tilt)
DAE Calibration Date	DAE4 Sn1547 2023-04-18	TSL Type	HBBL-600-10000
Software Version	16.2.4.2524		

Scan Setup

	Area Scan	Zoom Scan
Grid Extents [mm]	120.0 x 210.0	30.0 x 30.0 x 30.0
Grid Steps [mm]	15.0 x 15.0	6.0 x 6.0 x 1.5
Sensor Surface [mm]	3.0	1.4
Graded Grid	N/A	Yes
M2/M1 [%]		77.7
Dist 3dB Peak [mm]		10.2

Measurement Results

	Area Scan	Zoom Scan
psSAR1g [W/Kg]	0.723	0.782
psSAR10g [W/Kg]	0.420	0.450
Power Drift [dB]	N/A	-0.01



Measurement Report for Band n70: 5G NR (DFT-s-OFDM, 1 RB, 15 MHz, QPSK, 15 kHz) RBPosition:Mid AntennaCfg:SISO, EDGE BOTTOM

Exposure Conditions

Band	Band n70	TSL Permittivity	40.1
Frequency [MHz] Channel Number	1702.500 340500	TSL Conductivity [S/m]	1.29
Group UID	5G NR FR1 FDD 10930-AAC	Phantom Section TSL	Flat HSL
Conversion Factor	8.98	Test Distance [mm]	5.00

Hardware Setup

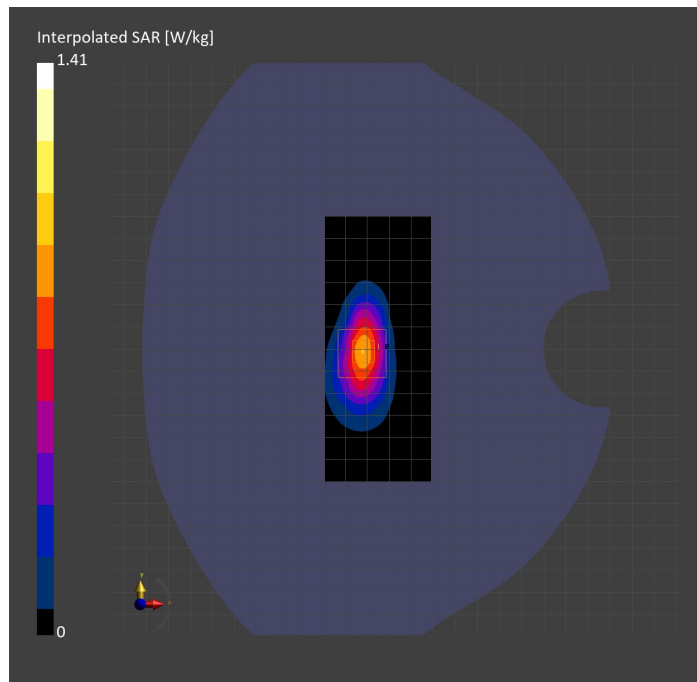
Probe Calibration Date	EX3DV4 - SN3989 2023-01-26	Phantom	Twin-SAM V8.0 (30deg probe tilt)
DAE Calibration Date	DAE4 Sn1257 2022-09-20	TSL Type	HBBL-600-10000
Software Version	16.2.4.2524		

Scan Setup

	Area Scan	Zoom Scan
Grid Extents [mm]	48.0 x 120.0	30.0 x 30.0 x 30.0
Grid Steps [mm]	8.0 x 15.0	6.0 x 6.0 x 1.5
Sensor Surface [mm]	3.0	1.4
Graded Grid	N/A	Yes
M2/M1 [%]		81.5
Dist 3dB Peak [mm]		7.2

Measurement Results

	Area Scan	Zoom Scan
psSAR1g [W/Kg]	0.735	0.730
psSAR10g [W/Kg]	0.363	0.362
Power Drift [dB]	N/A	0.04



Measurement Report for Band n70: 5G NR (DFT-s-OFDM, 50% RB, 15 MHz, QPSK, 15 kHz) RBPosition:Mid AntennaCfg:SISO, BACK

Exposure Conditions

Band	Band n70	TSL Permittivity	40.1
Frequency [MHz] Channel Number	1702.500 340500	TSL Conductivity [S/m]	1.29
Group UID	5G NR FR1 FDD 10938-AAC	Phantom Section TSL	Flat HSL
Conversion Factor	8.98	Test Distance [mm]	5.00

Hardware Setup

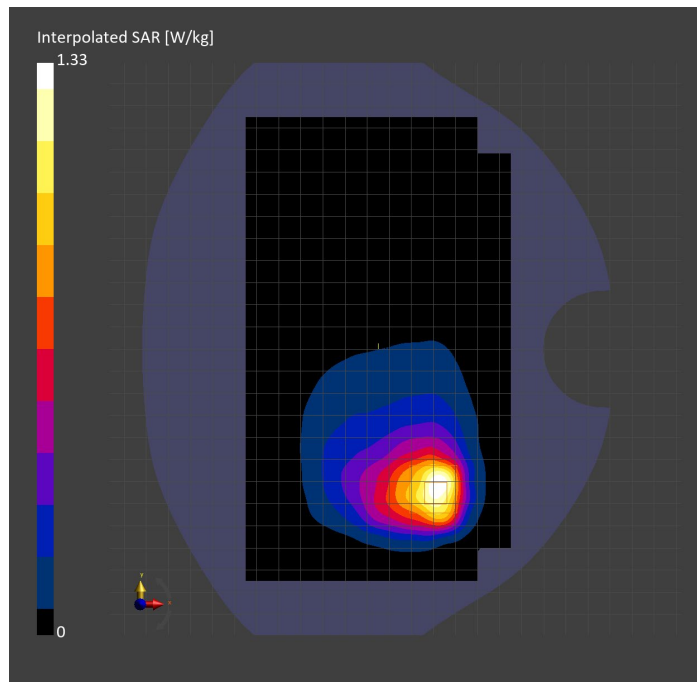
Probe Calibration Date	EX3DV4 - SN3989 2023-01-26	Phantom	Twin-SAM V8.0 (30deg probe tilt)
DAE Calibration Date	DAE4 Sn1257 2022-09-20	TSL Type	HBBL-600-10000
Software Version	16.2.4.2524		

Scan Setup

	Area Scan	Zoom Scan
Grid Extents [mm]	120.0 x 210.0	30.0 x 30.0 x 30.0
Grid Steps [mm]	15.0 x 15.0	6.0 x 6.0 x 1.5
Sensor Surface [mm]	3.0	1.4
Graded Grid	N/A	Yes
M2/M1 [%]		78.9
Dist 3dB Peak [mm]		10.3

Measurement Results

	Area Scan	Zoom Scan
psSAR1g [W/Kg]	0.587	0.677
psSAR10g [W/Kg]	0.325	0.339
Power Drift [dB]	N/A	-0.02



Measurement Report for Band n70: 5G NR (DFT-s-OFDM, 50% RB, 15 MHz, QPSK, 15 kHz) RBPosition:Mid AntennaCfg:SISO, CHEEK

Exposure Conditions

Band	Band n70	TSL Permittivity	40.4
Frequency [MHz] Channel Number	1702.500 340500	TSL Conductivity [S/m]	1.31
Group UID	5G NR FR1 FDD 10938-AAC	Phantom Section TSL	LeftHead HSL
Conversion Factor	8.66	Test Distance [mm]	0.00

Hardware Setup

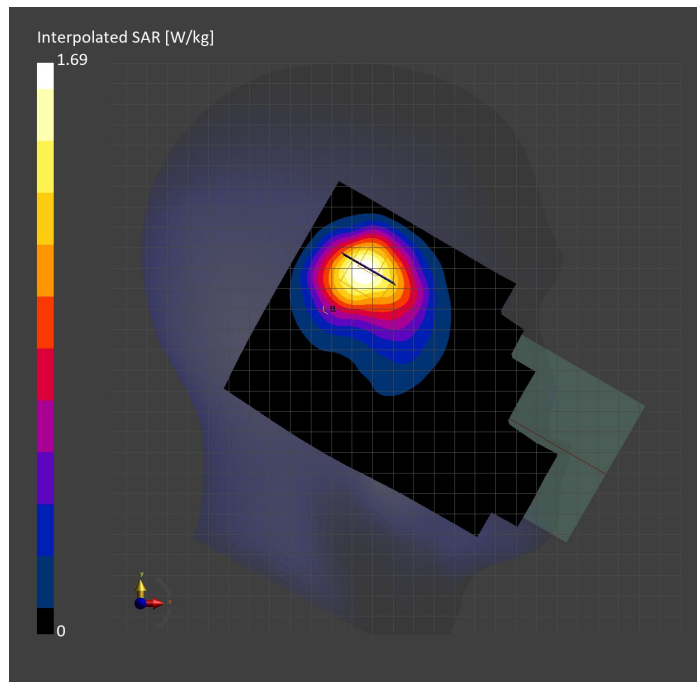
Probe Calibration Date	EX3DV4 - SN7569 2023-04-18	Phantom	Twin-SAM V8.0 (30deg probe tilt)
DAE Calibration Date	DAE4 Sn1547 2023-04-18	TSL Type	HBBL-600-10000
Software Version	16.2.4.2524		

Scan Setup

	Area Scan	Zoom Scan
Grid Extents [mm]	120.0 x 210.0	30.0 x 30.0 x 30.0
Grid Steps [mm]	15.0 x 15.0	6.0 x 6.0 x 1.5
Sensor Surface [mm]	3.0	1.4
Graded Grid	N/A	Yes
M2/M1 [%]		70.3
Dist 3dB Peak [mm]		7.7

Measurement Results

	Area Scan	Zoom Scan
psSAR1g [W/Kg]	0.705	0.751
psSAR10g [W/Kg]	0.413	0.437
Power Drift [dB]	N/A	-0.00



Measurement Report for Band n71: 5G NR (DFT-s-OFDM, 1 RB, 20 MHz, QPSK, 15 kHz) RBPosition:Mid AntennaCfg:SISO, EDGE RIGHT

Exposure Conditions

Band	Band n71	TSL Permittivity	42.2
Frequency [MHz] Channel Number	680.500 136100	TSL Conductivity [S/m]	0.856
Group UID	5G NR FR1 FDD 10931-AAC	Phantom Section TSL	Flat HSL
Conversion Factor	10.62	Test Distance [mm]	5.00

Hardware Setup

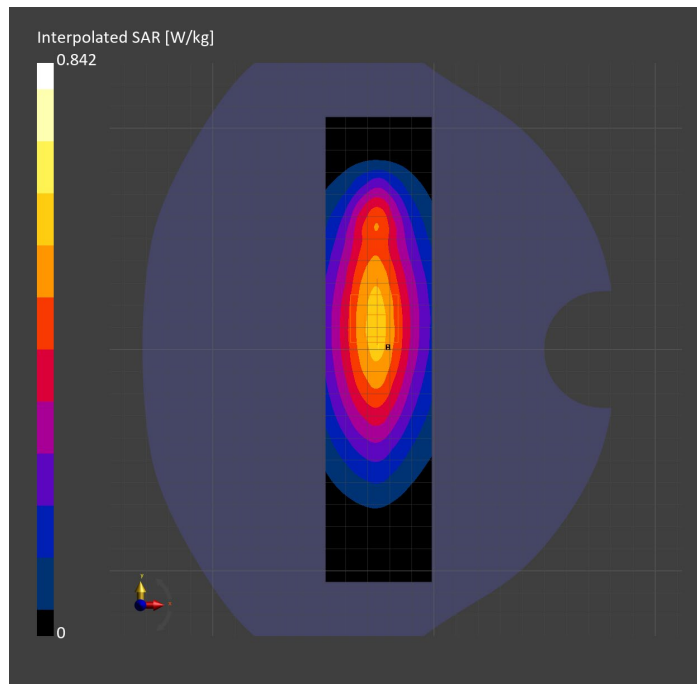
Probe Calibration Date	EX3DV4 - SN7589 2023-04-18	Phantom	Twin-SAM V5.0 (30deg probe tilt)
DAE Calibration Date	DAE4 Sn1544 2023-01-24	TSL Type	HBBL-600-10000
Software Version	16.2.4.2524		

Scan Setup

	Area Scan	Zoom Scan
Grid Extents [mm]	48.0 x 210.0	30.0 x 30.0 x 30.0
Grid Steps [mm]	8.0 x 15.0	6.0 x 6.0 x 1.5
Sensor Surface [mm]	3.0	1.4
Graded Grid	N/A	Yes
M2/M1 [%]		84.8
Dist 3dB Peak [mm]		> 15.0

Measurement Results

	Area Scan	Zoom Scan
psSAR1g [W/Kg]	0.519	0.526
psSAR10g [W/Kg]	0.350	0.353
Power Drift [dB]	N/A	-0.01



Measurement Report for Band n71: 5G NR (DFT-s-OFDM, 1 RB, 20 MHz, QPSK, 15 kHz) RBPosition:Mid AntennaCfg:SISO, CHEEK

Exposure Conditions

Band	Band n71	TSL Permittivity	41.1
Frequency [MHz] Channel Number	680.500 136100	TSL Conductivity [S/m]	0.852
Group UID	5G NR FR1 FDD 10931-AAC	Phantom Section TSL	RightHead HSL
Conversion Factor	8.93	Test Distance [mm]	0.00

Hardware Setup

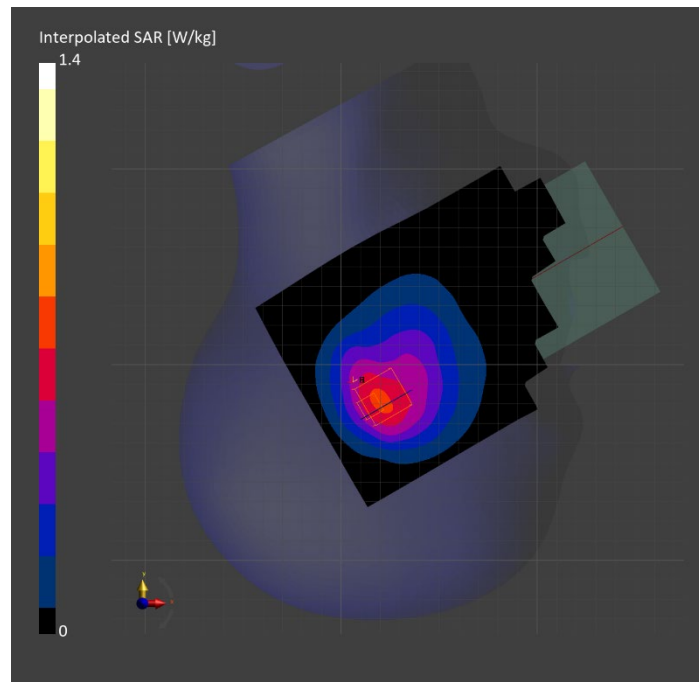
Probe Calibration Date	EX3DV4 - SN7448 2023-02-14	Phantom	Twin-SAM V5.0 (30deg probe tilt)
DAE Calibration Date	DAE4 Sn1472 2023-01-23	TSL Type	HBBL-600-10000
Software Version	16.2.4.2524		

Scan Setup

	Area Scan	Zoom Scan
Grid Extents [mm]	120.0 x 210.0	30.0 x 30.0 x 30.0
Grid Steps [mm]	15.0 x 15.0	6.0 x 6.0 x 1.5
Sensor Surface [mm]	3.0	1.4
Graded Grid	N/A	Yes
M2/M1 [%]		74.4
Dist 3dB Peak [mm]		10.4

Measurement Results

	Area Scan	Zoom Scan
psSAR1g [W/Kg]	0.636	0.648
psSAR10g [W/Kg]	0.424	0.404
Power Drift [dB]	N/A	-0.03



Measurement Report for Band n71: 5G NR (DFT-s-OFDM, 1 RB, 20 MHz, QPSK, 15 kHz) RBPosition:Mid AntennaCfg:SISO, BACK

Exposure Conditions

Band	Band n71	TSL Permittivity	41.1
Frequency [MHz] Channel Number	680.500 136100	TSL Conductivity [S/m]	0.852
Group UID	5G NR FR1 FDD 10931-AAC	Phantom Section TSL	Flat HSL
Conversion Factor	8.93	Test Distance [mm]	5.00

Hardware Setup

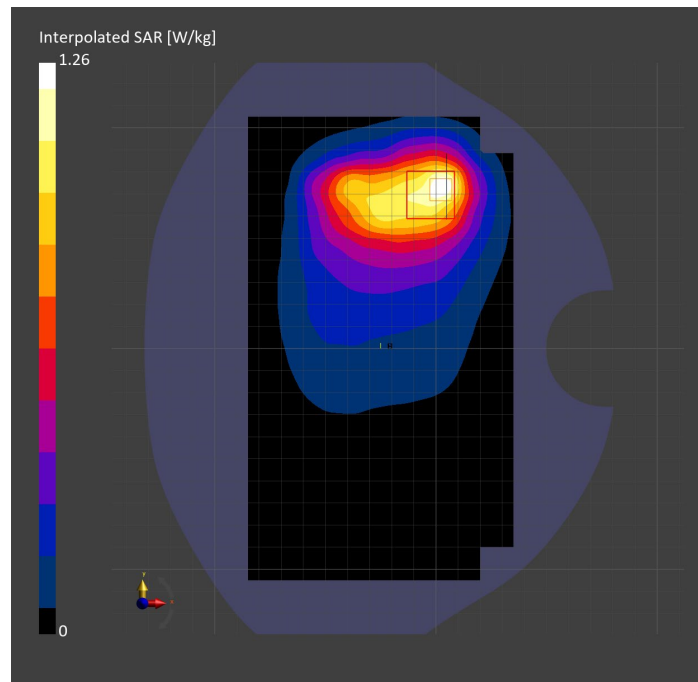
Probe Calibration Date	EX3DV4 - SN7448 2023-02-14	Phantom	Twin-SAM V5.0 (30deg probe tilt)
DAE Calibration Date	DAE4 Sn1472 2023-01-23	TSL Type	HBBL-600-10000
Software Version	16.2.4.2524		

Scan Setup

	Area Scan	Zoom Scan
Grid Extents [mm]	120.0 x 210.0	30.0 x 30.0 x 30.0
Grid Steps [mm]	15.0 x 15.0	6.0 x 6.0 x 1.5
Sensor Surface [mm]	3.0	1.4
Graded Grid	N/A	Yes
M2/M1 [%]		75.1
Dist 3dB Peak [mm]		11.9

Measurement Results

	Area Scan	Zoom Scan
psSAR1g [W/Kg]	0.646	0.601
psSAR10g [W/Kg]	0.417	0.353
Power Drift [dB]	N/A	0.03



Measurement Report for Band n77: 5G NR (DFT-s-OFDM, 50% RB, 100 MHz, QPSK, 30 kHz) RBPosition:Mid AntennaCfg:SISO, EDGE RIGHT

Exposure Conditions

Band	Band n77	TSL Permittivity	39.2
Frequency [MHz] Channel Number	3499.980 633332	TSL Conductivity [S/m]	2.98
Group UID	5G NR FR1 TDD 10917-AAD	Phantom Section TSL	Flat HSL
Conversion Factor	6.87	Test Distance [mm]	5.00

Hardware Setup

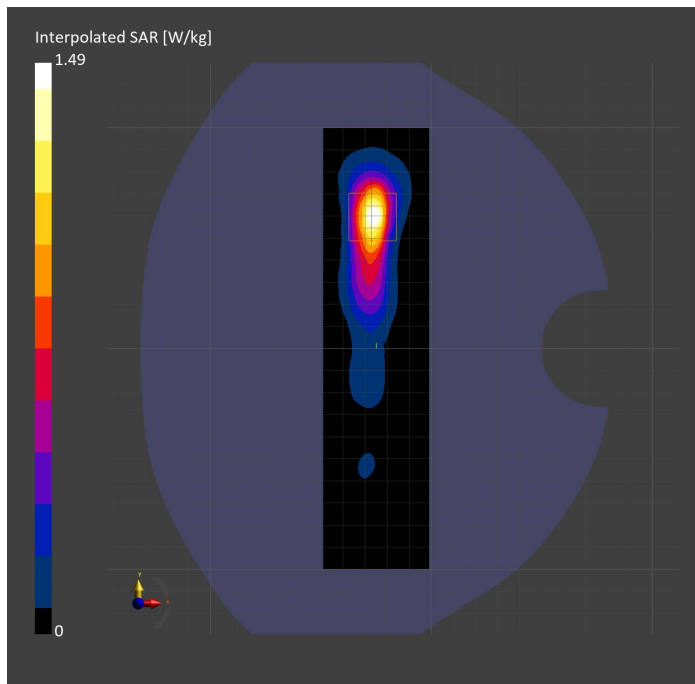
Probe Calibration Date	EX3DV4 - SN7335 2023-01-26	Phantom	Twin-SAM V8.0 (30deg probe tilt)
DAE Calibration Date	DAE4ip Sn1619 2023-04-18	TSL Type	HBBL-600-10000
Software Version	16.2.4.2524		

Scan Setup

	Area Scan	Zoom Scan
Grid Extents [mm]	48.0 x 200.0	28.0 x 28.0 x 28.0
Grid Steps [mm]	8.0 x 10.0	5.0 x 5.0 x 1.4
Sensor Surface [mm]	3.0	1.4
Graded Grid	N/A	Yes
M2/M1 [%]		74.2
Dist 3dB Peak [mm]		6.8

Measurement Results

	Area Scan	Zoom Scan
psSAR1g [W/Kg]	0.539	0.547
psSAR10g [W/Kg]	0.202	0.196
Power Drift [dB]	N/A	0.01



Measurement Report for Band n77: 5G NR (DFT-s-OFDM, 1 RB, 100 MHz, QPSK, 30 kHz) RBPosition:Mid AntennaCfg:SISO, CHEEK

Exposure Conditions

Band	Band n77	TSL Permittivity	36.3
Frequency [MHz] Channel Number	3499.980 633332	TSL Conductivity [S/m]	2.83
Group UID	5G NR FR1 TDD 10866-AAF	Phantom Section TSL	RightHead HSL
Conversion Factor	6.79	Test Distance [mm]	0.00

Hardware Setup

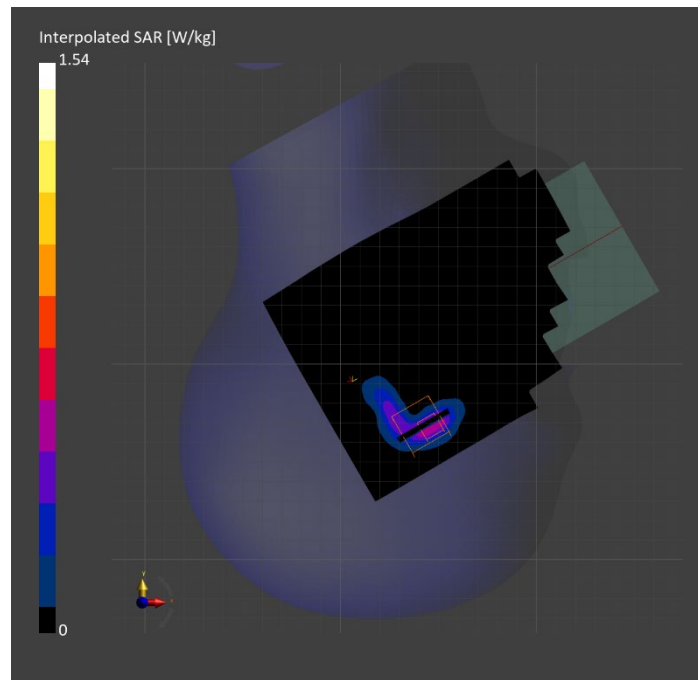
Probe Calibration Date	EX3DV4 - SN3990 2023-02-17	Phantom	Twin-SAM V5.0 (30deg probe tilt)
DAE Calibration Date	DAE4 Sn1545 2023-02-14	TSL Type	HBBL-600-10000
Software Version	16.2.4.2524		

Scan Setup

	Area Scan	Zoom Scan
Grid Extents [mm]	120.0 x 200.0	30.0 x 30.0 x 28.0
Grid Steps [mm]	10.0 x 10.0	5.0 x 5.0 x 1.4
Sensor Surface [mm]	3.0	1.4
Graded Grid	N/A	Yes
M2/M1 [%]		70.9
Dist 3dB Peak [mm]		4.1

Measurement Results

	Area Scan	Zoom Scan
psSAR1g [W/Kg]	0.426	0.487
psSAR10g [W/Kg]	0.160	0.162
Power Drift [dB]	N/A	0.02



Measurement Report for Band n77: 5G NR (DFT-s-OFDM, 50% RB, 100 MHz, QPSK, 30 kHz) RBPosition:Mid AntennaCfg:SISO, BACK

Exposure Conditions

Band	Band n77	TSL Permittivity	39.4
Frequency [MHz] Channel Number	3499.980 633332	TSL Conductivity [S/m]	2.77
Group UID	5G NR FR1 TDD 10917-AAD	Phantom Section TSL	Flat HSL
Conversion Factor	6.87	Test Distance [mm]	5.00

Hardware Setup

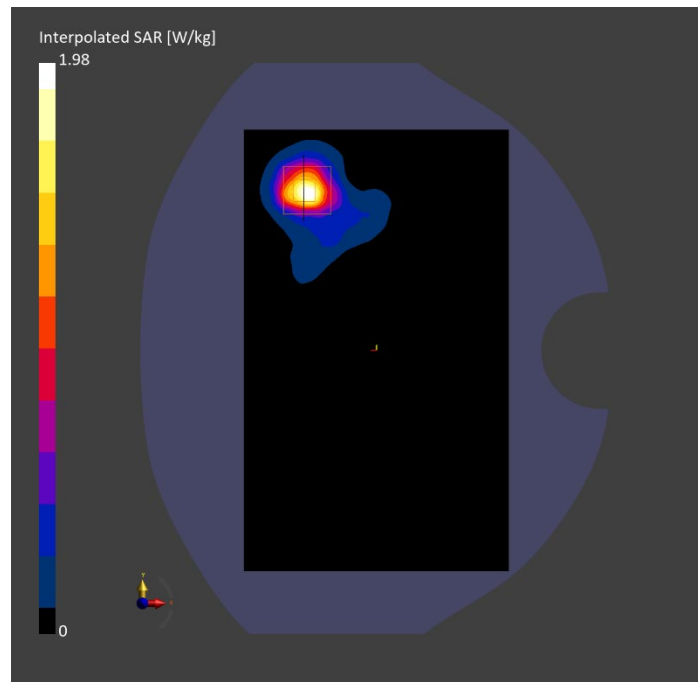
Probe Calibration Date	EX3DV4 - SN7335 2023-01-26	Phantom	Twin-SAM V8.0 (30deg probe tilt)
DAE Calibration Date	DAE4ip Sn1619 2023-04-18	TSL Type	HBBL-600-10000
Software Version	16.2.4.2524		

Scan Setup

	Area Scan	Zoom Scan
Grid Extents [mm]	120.0 x 200.0	28.0 x 28.0 x 28.0
Grid Steps [mm]	10.0 x 10.0	5.0 x 5.0 x 1.4
Sensor Surface [mm]	3.0	1.4
Graded Grid	N/A	Yes
M2/M1 [%]		73.7
Dist 3dB Peak [mm]		7.9

Measurement Results

	Area Scan	Zoom Scan
psSAR1g [W/Kg]	0.644	0.705
psSAR10g [W/Kg]	0.241	0.246
Power Drift [dB]	N/A	0.01



Measurement Report for Band n77: 5G NR (DFT-s-OFDM, 50% RB, 100 MHz, QPSK, 30 kHz) RBPosition:Mid AntennaCfg:SISO, CHEEK

Exposure Conditions

Band	Band n77	TSL Permittivity	38.2
Frequency [MHz] Channel Number	3858.000 657200	TSL Conductivity [S/m]	3.34
Group UID	5G NR FR1 TDD 10917-AAD	Phantom Section TSL	RightHead HSL
Conversion Factor	6.15	Test Distance [mm]	0.00

Hardware Setup

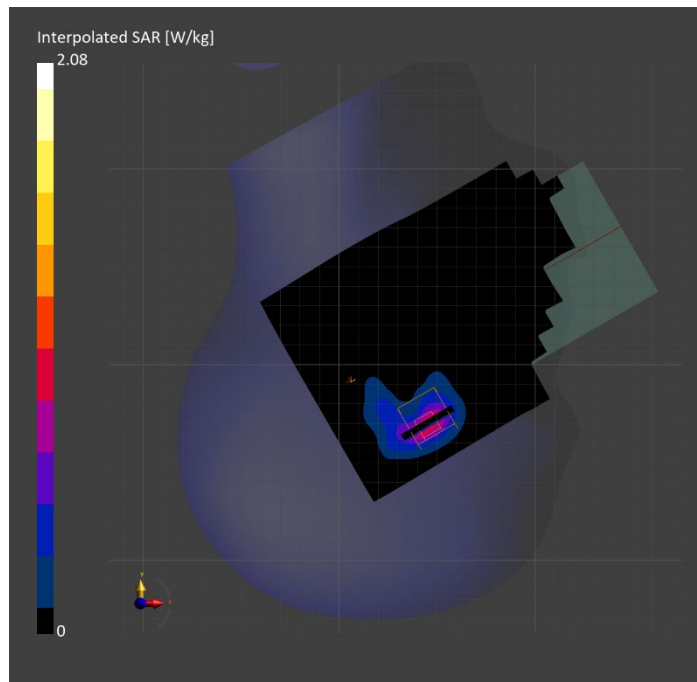
Probe Calibration Date	EX3DV4 - SN7463 2023-04-19	Phantom	Twin-SAM V8.0 (30deg probe tilt)
DAE Calibration Date	DAE4 Sn1673 2023-05-12	TSL Type	HBBL-600-10000
Software Version	16.2.4.2524		

Scan Setup

	Area Scan	Zoom Scan
Grid Extents [mm]	120.0 x 200.0	28.0 x 28.0 x 28.0
Grid Steps [mm]	10.0 x 10.0	5.0 x 5.0 x 1.4
Sensor Surface [mm]	3.0	1.4
Graded Grid	N/A	Yes
M2/M1 [%]		74.0
Dist 3dB Peak [mm]		6.7

Measurement Results

	Area Scan	Zoom Scan
psSAR1g [W/Kg]	0.665	0.725
psSAR10g [W/Kg]	0.259	0.272
Power Drift [dB]	N/A	-0.04



Measurement Report for Band n77: 5G NR (DFT-s-OFDM, 50% RB, 100 MHz, QPSK, 30 kHz) RBPosition:Mid AntennaCfg:SISO, EDGE LEFT

Exposure Conditions

Band	Band n77	TSL Permittivity	37.4
Frequency [MHz] Channel Number	3858.000 657200	TSL Conductivity [S/m]	3.18
Group UID	5G NR FR1 TDD 10917-AAD	Phantom Section TSL	Flat HSL
Conversion Factor	6.15	Test Distance [mm]	5.00

Hardware Setup

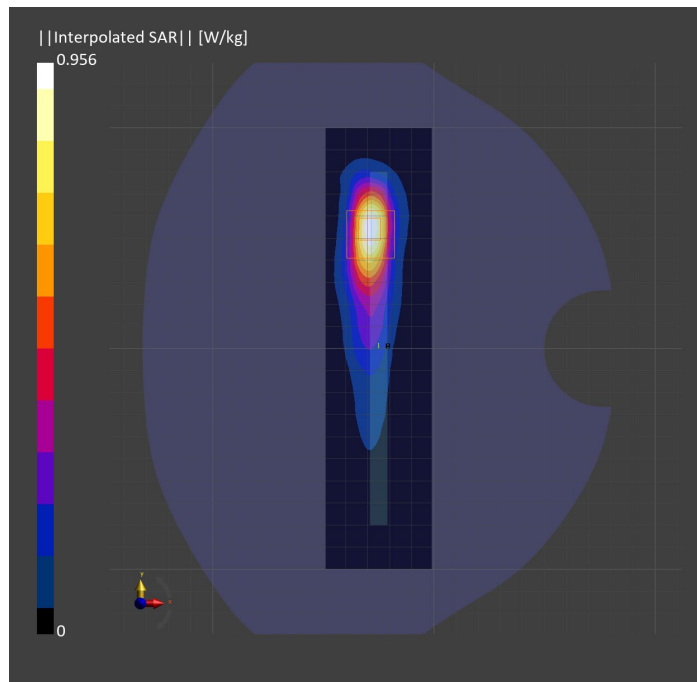
Probe Calibration Date	EX3DV4 - SN7463 2023-04-19	Phantom	Twin-SAM V8.0 (30deg probe tilt)
DAE Calibration Date	DAE4 Sn1673 2023-05-12	TSL Type	HBBL-600-10000
Software Version	16.2.4.2524		

Scan Setup

	Area Scan	Zoom Scan
Grid Extents [mm]	48.0 x 200.0	30.0 x 30.0 x 28.0
Grid Steps [mm]	8.0 x 10.0	5.0 x 5.0 x 1.4
Sensor Surface [mm]	3.0	1.4
Graded Grid	N/A	Yes
M2/M1 [%]		72.7
Dist 3dB Peak [mm]		7.0

Measurement Results

	Area Scan	Zoom Scan
psSAR1g [W/Kg]	0.681	0.733
psSAR10g [W/Kg]	0.264	0.284
Power Drift [dB]	N/A	-0.07



Measurement Report for Band n77: 5G NR (DFT-s-OFDM, 1 RB, 100 MHz, QPSK, 30 kHz) RBPosition:Mid AntennaCfg:SISO, BACK

Exposure Conditions

Band	Band n77	TSL Permittivity	38.7
Frequency [MHz] Channel Number	3858.000 657200	TSL Conductivity [S/m]	3.25
Group UID	5G NR FR1 TDD 10866-AAF	Phantom Section TSL	Flat HSL
Conversion Factor	6.15	Test Distance [mm]	5.00

Hardware Setup

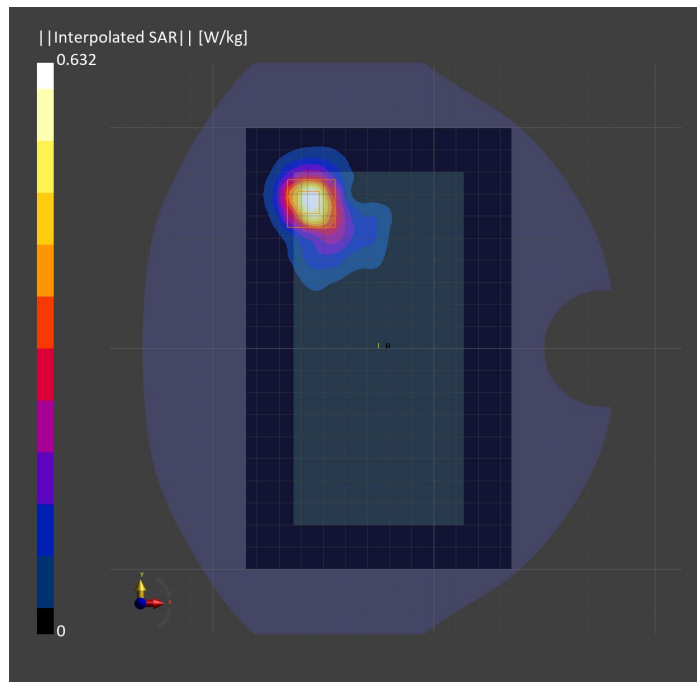
Probe Calibration Date	EX3DV4 - SN7463 2023-04-19	Phantom	Twin-SAM V8.0 (30deg probe tilt)
DAE Calibration Date	DAE4 Sn1673 2023-05-12	TSL Type	HBBL-600-10000
Software Version	16.2.4.2524		

Scan Setup

	Area Scan	Zoom Scan
Grid Extents [mm]	120.0 x 200.0	30.0 x 30.0 x 28.0
Grid Steps [mm]	10.0 x 10.0	5.0 x 5.0 x 1.4
Sensor Surface [mm]	3.0	1.4
Graded Grid	N/A	Yes
M2/M1 [%]		77.9
Dist 3dB Peak [mm]		7.3

Measurement Results

	Area Scan	Zoom Scan
psSAR1g [W/Kg]	0.462	0.546
psSAR10g [W/Kg]	0.182	0.211
Power Drift [dB]	N/A	0.04



THIS PAGE INTENTIONALLY LEFT BLANK

THIS PAGE INTENTIONALLY LEFT BLANK

THIS PAGE INTENTIONALLY LEFT BLANK

Measurement Report for WLAN 2.4GHz: IEEE 802.11b WiFi 2.4 GHz (DSSS, 1 Mbps, 99pc duty cycle), BACK

Exposure Conditions

Band	WLAN 2.4GHz	TSL Permittivity	40.0
Frequency [MHz] Channel Number	2412.000 1	TSL Conductivity [S/m]	1.72
Group UID	WLAN 10415-AAA	Phantom Section TSL	Flat HSL
Conversion Factor	7.64	Test Distance [mm]	5.00

Hardware Setup

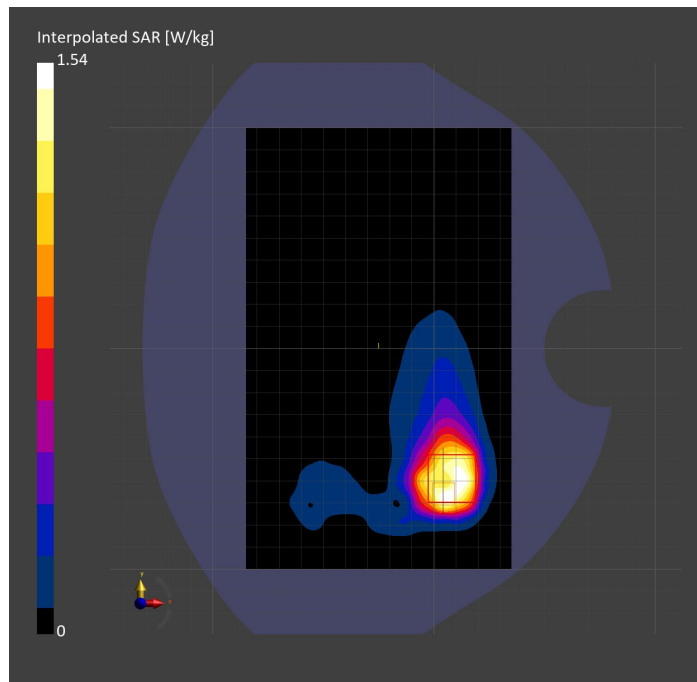
Probe Calibration Date	EX3DV4 - SN7587 2023-04-18	Phantom	Twin-SAM V8.0 (30deg probe tilt)
DAE Calibration Date	DAE4 Sn1239 2023-03-16	TSL Type	HBBL-600-10000
Software Version	16.2.4.2524		

Scan Setup

	Area Scan	Zoom Scan
Grid Extents [mm]	120.0 x 200.0	30.0 x 30.0 x 30.0
Grid Steps [mm]	10.0 x 10.0	5.0 x 5.0 x 1.5
Sensor Surface [mm]	3.0	1.4
Graded Grid	N/A	Yes
M2/M1 [%]		76.9
Dist 3dB Peak [mm]		7.7

Measurement Results

	Area Scan	Zoom Scan
psSAR1g [W/Kg]	0.653	0.664
psSAR10g [W/Kg]	0.358	0.344
Power Drift [dB]	N/A	0.00



Measurement Report for WLAN 2.4GHz: IEEE 802.11b WiFi 2.4 GHz (DSSS, 1 Mbps, 99pc duty cycle), CHEEK

Exposure Conditions

Band	WLAN 2.4GHz	TSL Permittivity	38.9
Frequency [MHz] Channel Number	2437.000 6	TSL Conductivity [S/m]	1.73
Group UID	WLAN 10415-AAA	Phantom Section TSL	LeftHead HSL
Conversion Factor	7.64	Test Distance [mm]	0.00

Hardware Setup

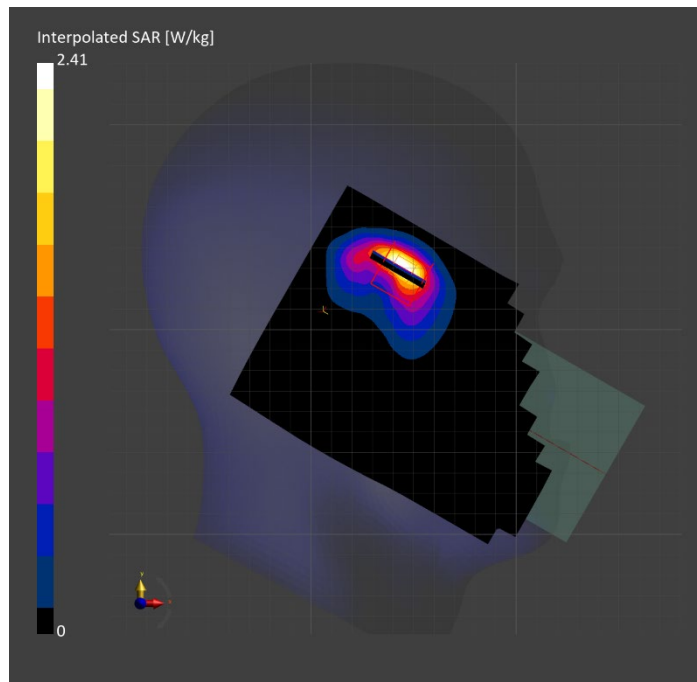
Probe Calibration Date	EX3DV4 - SN7587 2023-04-18	Phantom	Twin-SAM V8.0 (30deg probe tilt)
DAE Calibration Date	DAE4 Sn1239 2023-03-16	TSL Type	HBBL-600-10000
Software Version	16.2.4.2524		

Scan Setup

	Area Scan	Zoom Scan
Grid Extents [mm]	120.0 x 200.0	30.0 x 30.0 x 30.0
Grid Steps [mm]	10.0 x 10.0	5.0 x 5.0 x 1.5
Sensor Surface [mm]	3.0	1.4
Graded Grid	N/A	Yes
M2/M1 [%]		75.6
Dist 3dB Peak [mm]		5.1

Measurement Results

	Area Scan	Zoom Scan
psSAR1g [W/Kg]	0.925	0.974
psSAR10g [W/Kg]	0.413	0.423
Power Drift [dB]	N/A	-0.01



Measurement Report for WLAN 2.4GHz: IEEE 802.11b WiFi 2.4 GHz (DSSS, 1 Mbps, 99pc duty cycle), EDGE RIGHT

Exposure Conditions

Band	WLAN 2.4GHz	TSL Permittivity	37.8
Frequency [MHz] Channel Number	2462.000 11	TSL Conductivity [S/m]	1.81
Group UID	WLAN 10415-AAA	Phantom Section TSL	Flat HSL
Conversion Factor	7.33	Test Distance [mm]	5.00

Hardware Setup

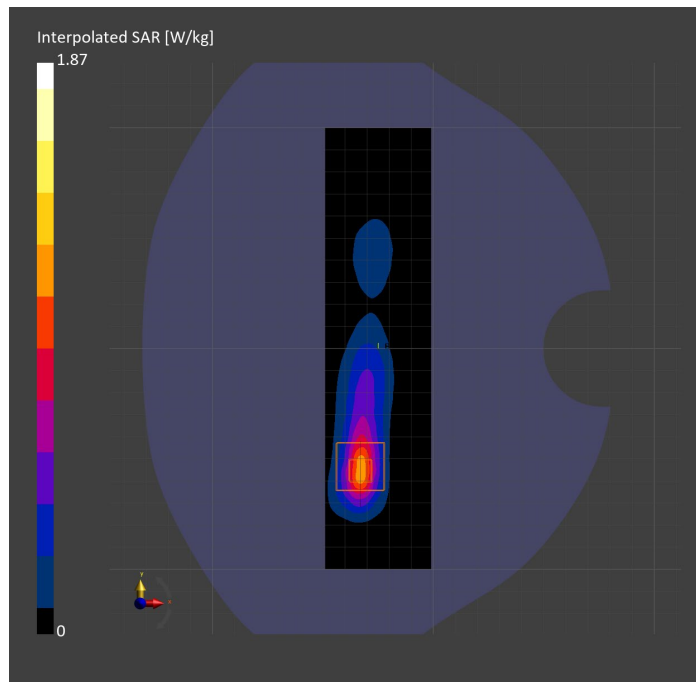
Probe Calibration Date	EX3DV4 - SN3772 2023-02-13	Phantom	Twin-SAM V8.0 (30deg probe tilt)
DAE Calibration Date	DAE4 Sn1359 2023-01-24	TSL Type	HBBL-600-10000
Software Version	16.2.4.2524		

Scan Setup

	Area Scan	Zoom Scan
Grid Extents [mm]	48.0 x 200.0	30.0 x 30.0 x 30.0
Grid Steps [mm]	8.0 x 10.0	5.0 x 5.0 x 1.5
Sensor Surface [mm]	3.0	1.4
Graded Grid	N/A	Yes
M2/M1 [%]		78.1
Dist 3dB Peak [mm]		7.0

Measurement Results

	Area Scan	Zoom Scan
psSAR1g [W/Kg]	0.854	0.826
psSAR10g [W/Kg]	0.362	0.345
Power Drift [dB]	N/A	-0.03



Measurement Report for WLAN 5GHz: IEEE 802.11n (HT Greenfield, 13.5 Mbps, BPSK), BACK

Exposure Conditions

Band	WLAN 5GHz	TSL Permittivity	35.6
Frequency [MHz] Channel Number	5230.000 46	TSL Conductivity [S/m]	4.53
Group UID	WLAN 10114-CAE	Phantom Section TSL	Flat HSL
Conversion Factor	5.14	Test Distance [mm]	5.00

Hardware Setup

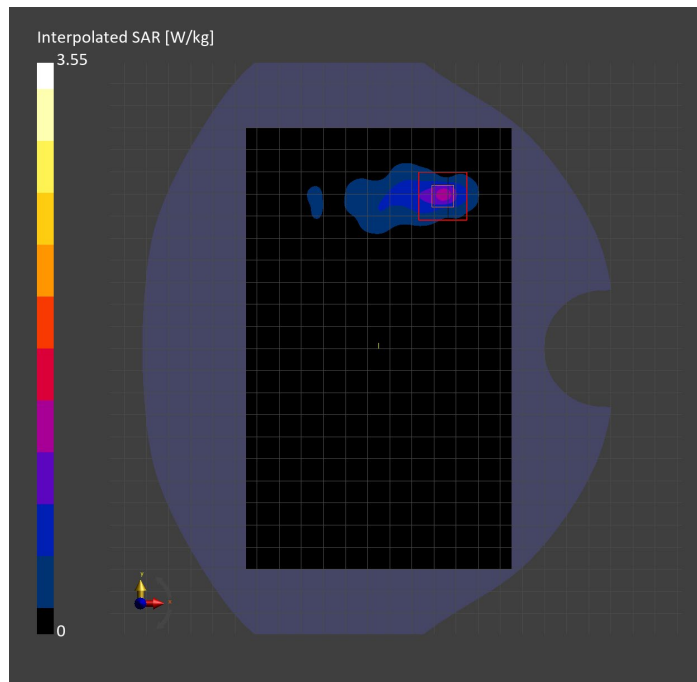
Probe Calibration Date	EX3DV4 - SN3773 2023-02-13	Phantom	Twin-SAM V5.0 (30deg probe tilt)
DAE Calibration Date	DAE4 Sn1258 2023-03-16	TSL Type	HBBL-600-10000
Software Version	16.2.4.2524		

Scan Setup

	Area Scan	Zoom Scan
Grid Extents [mm]	120.0 x 200.0	24.0 x 24.0 x 22.0
Grid Steps [mm]	10.0 x 10.0	4.0 x 4.0 x 1.4
Sensor Surface [mm]	3.0	1.4
Graded Grid	N/A	Yes
M2/M1 [%]		63.5
Dist 3dB Peak [mm]		5.6

Measurement Results

	Area Scan	Zoom Scan
psSAR1g [W/Kg]	0.860	0.894
psSAR10g [W/Kg]	0.275	0.278
Power Drift [dB]	N/A	0.02



Measurement Report for WLAN 5GHz: IEEE 802.11n (HT Greenfield, 13.5 Mbps, BPSK), EDGE LEFT

Exposure Conditions

Band	WLAN 5GHz	TSL Permittivity	35.6
Frequency [MHz] Channel Number	5230.000 46	TSL Conductivity [S/m]	4.53
Group UID	WLAN 10114-CAE	Phantom Section TSL	Flat HSL
Conversion Factor	5.14	Test Distance [mm]	5.00

Hardware Setup

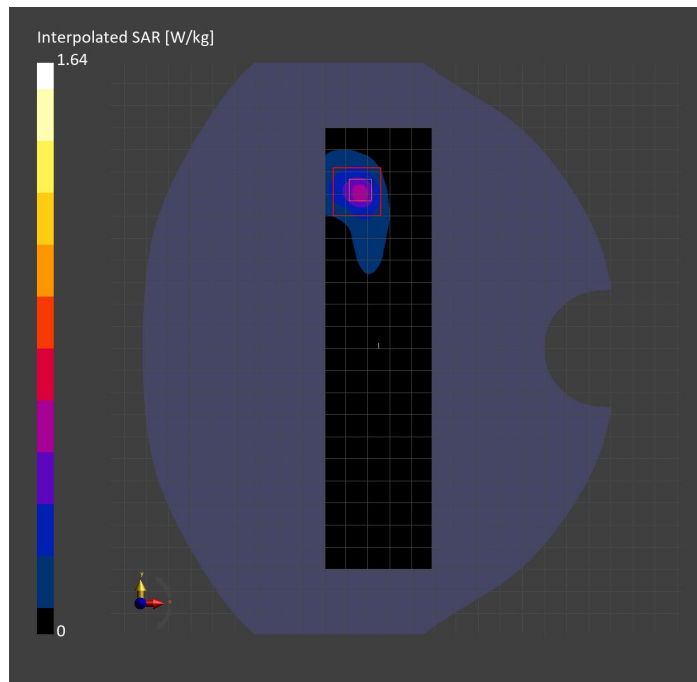
Probe Calibration Date	EX3DV4 - SN3773 2023-02-13	Phantom	Twin-SAM V5.0 (30deg probe tilt)
DAE Calibration Date	DAE4 Sn1258 2023-03-16	TSL Type	HBBL-600-10000
Software Version	16.2.4.2524		

Scan Setup

	Area Scan	Zoom Scan
Grid Extents [mm]	48.0 x 200.0	24.0 x 24.0 x 22.0
Grid Steps [mm]	8.0 x 10.0	4.0 x 4.0 x 1.4
Sensor Surface [mm]	3.0	1.4
Graded Grid	N/A	Yes
M2/M1 [%]		65.6
Dist 3dB Peak [mm]		7.2

Measurement Results

	Area Scan	Zoom Scan
psSAR1g [W/Kg]	0.422	0.440
psSAR10g [W/Kg]	0.142	0.145
Power Drift [dB]	N/A	-0.08



Measurement Report for U-NII-1, U-NII-2A: IEEE 802.11n (HT Greenfield, 13.5 Mbps, BPSK), CHEEK

Exposure Conditions

Band	U-NII-1, U-NII-2A	TSL Permittivity	34.4
Frequency [MHz] Channel Number	5270.000 54	TSL Conductivity [S/m]	4.57
Group UID	WLAN 10114-CAE	Phantom Section TSL	RightHead HSL
Conversion Factor	5.14	Test Distance [mm]	0.00

Hardware Setup

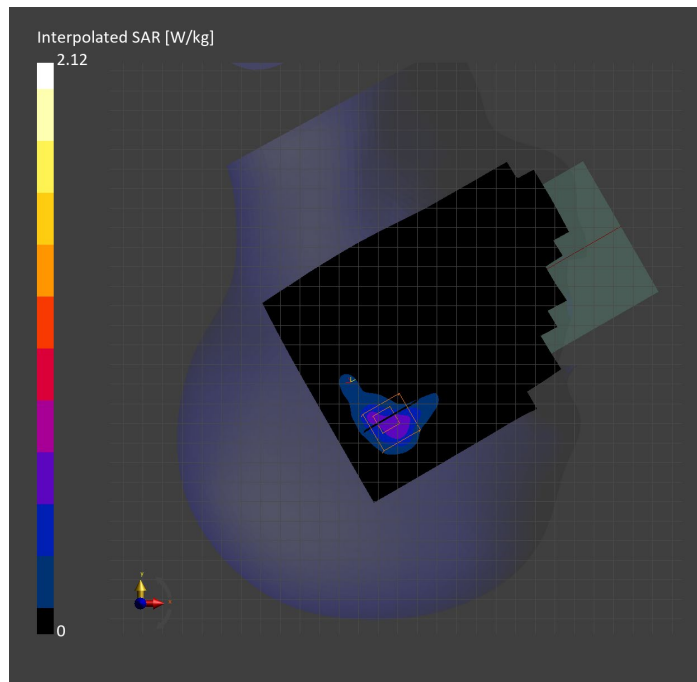
Probe Calibration Date	EX3DV4 - SN3773 2023-02-13	Phantom	Twin-SAM V5.0 (30deg probe tilt)
DAE Calibration Date	DAE4 Sn1258 2023-03-16	TSL Type	HBBL-600-10000
Software Version	16.2.4.2524		

Scan Setup

	Area Scan	Zoom Scan
Grid Extents [mm]	120.0 x 200.0	24.0 x 24.0 x 22.0
Grid Steps [mm]	10.0 x 10.0	4.0 x 4.0 x 1.4
Sensor Surface [mm]	3.0	1.4
Graded Grid	N/A	Yes
M2/M1 [%]		70.6
Dist 3dB Peak [mm]		5.4

Measurement Results

	Area Scan	Zoom Scan
psSAR1g [W/Kg]	0.497	0.544
psSAR10g [W/Kg]	0.182	0.184
Power Drift [dB]	N/A	-0.19



Measurement Report for WLAN 5GHz: IEEE 802.11ac WiFi (80MHz, MCS0, 99pc duty cycle), EDGE LEFT

Exposure Conditions

Band	WLAN 5GHz	TSL Permittivity	35.5
Frequency [MHz] Channel Number	5610.000 122	TSL Conductivity [S/m]	4.84
Group UID	WLAN 10544-AAD	Phantom Section TSL	Flat HSL
Conversion Factor	4.98	Test Distance [mm]	5.00

Hardware Setup

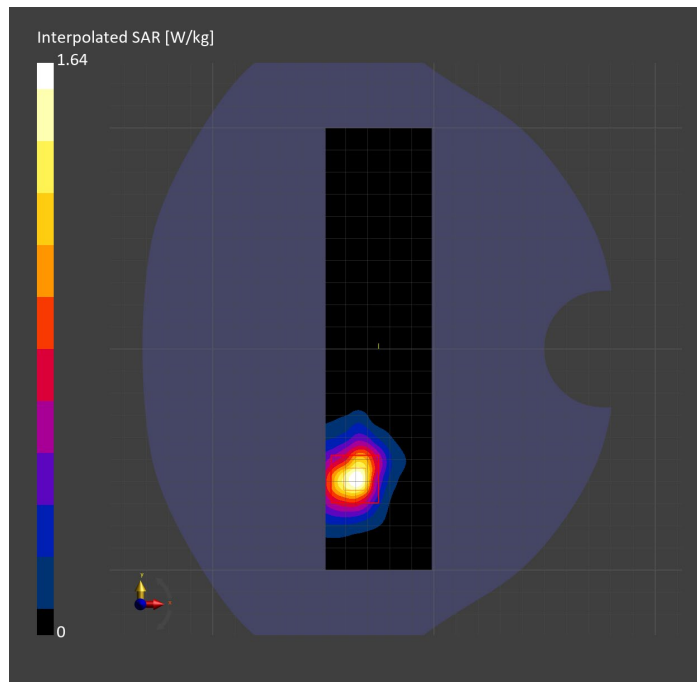
Probe Calibration Date	EX3DV4 - SN3902 2023-03-17	Phantom	Twin-SAM V5.0 (30deg probe tilt)
DAE Calibration Date	DAE4 Sn1797 2023-04-03	TSL Type	HBBL-600-10000
Software Version	16.2.4.2524		

Scan Setup

	Area Scan	Zoom Scan
Grid Extents [mm]	48.0 x 200.0	24.0 x 24.0 x 22.0
Grid Steps [mm]	8.0 x 10.0	4.0 x 4.0 x 1.4
Sensor Surface [mm]	3.0	1.4
Graded Grid	N/A	Yes
M2/M1 [%]		62.9
Dist 3dB Peak [mm]		7.6

Measurement Results

	Area Scan	Zoom Scan
psSAR1g [W/Kg]	0.417	0.425
psSAR10g [W/Kg]	0.147	0.137
Power Drift [dB]	N/A	-0.05



Measurement Report for WLAN 5GHz: IEEE 802.11ac WiFi (80MHz, MCS0, 99pc duty cycle), CHEEK

Exposure Conditions

Band	WLAN 5GHz	TSL Permittivity	34.6
Frequency [MHz] Channel Number	5610.000 122	TSL Conductivity [S/m]	4.89
Group UID	WLAN 10544-AAD	Phantom Section TSL	RightHead HSL
Conversion Factor	4.98	Test Distance [mm]	0.00

Hardware Setup

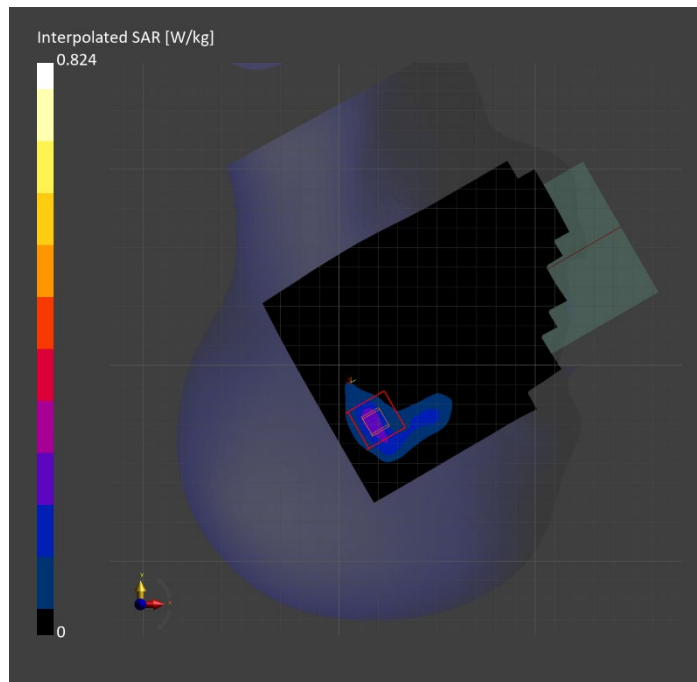
Probe Calibration Date	EX3DV4 - SN3902 2023-03-17	Phantom	Twin-SAM V5.0 (30deg probe tilt)
DAE Calibration Date	DAE4 Sn1797 2023-04-03	TSL Type	HBBL-600-10000
Software Version	16.2.4.2524		

Scan Setup

	Area Scan	Zoom Scan	Secondary Zoom Scan
Grid Extents [mm]	120.0 x 200.0	24.0 x 24.0 x 22.0	24.0 x 24.0 x 22.0
Grid Steps [mm]	10.0 x 10.0	4.0 x 4.0 x 1.4	4.0 x 4.0 x 1.4
Sensor Surface [mm]	3.0	1.4	1.4
Graded Grid	N/A	Yes	Yes
M2/M1 [%]		60.0	59.6
Dist 3dB Peak [mm]		5.9	6.4

Measurement Results

	Area Scan	Zoom Scan	Secondary Zoom Scan
psSAR1g [W/Kg]	0.177	0.200	0.186
psSAR10g [W/Kg]	0.061	0.057	0.054
Power Drift [dB]	N/A	-0.51	-0.07



Measurement Report for WLAN 5GHz: IEEE 802.11ac WiFi (80MHz, MCS0, 99pc duty cycle), BACK

Exposure Conditions

Band	WLAN 5GHz	TSL Permittivity	34.7
Frequency [MHz] Channel Number	5690.000 138	TSL Conductivity [S/m]	4.92
Group UID	WLAN 10544-AAD	Phantom Section TSL	Flat HSL
Conversion Factor	4.69	Test Distance [mm]	5.00

Hardware Setup

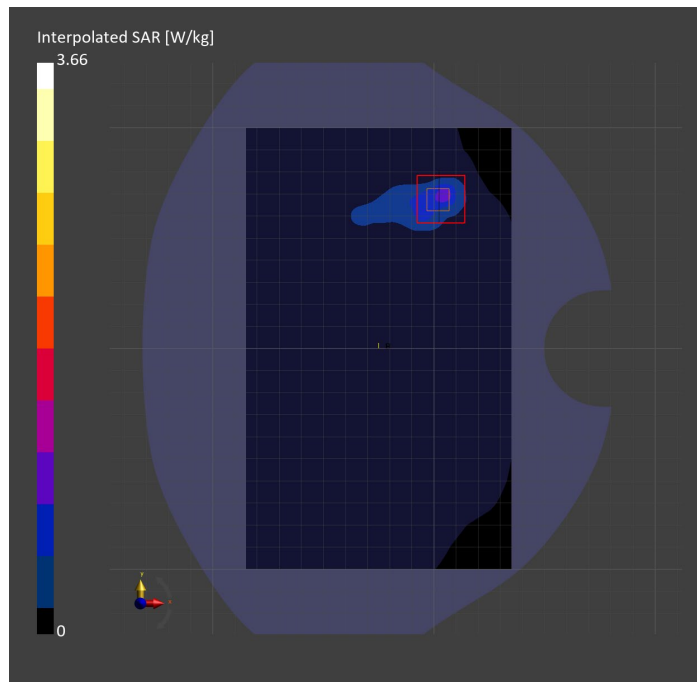
Probe Calibration Date	EX3DV4 - SN7585 2023-04-18	Phantom	Twin-SAM V5.0 (30deg probe tilt)
DAE Calibration Date	DAE4 Sn1434 2023-06-13	TSL Type	HBBL-600-10000
Software Version	16.2.4.2524		

Scan Setup

	Area Scan	Zoom Scan
Grid Extents [mm]	120.0 x 200.0	24.0 x 24.0 x 22.0
Grid Steps [mm]	10.0 x 10.0	4.0 x 4.0 x 1.4
Sensor Surface [mm]	3.0	1.4
Graded Grid	N/A	Yes
M2/M1 [%]		58.9
Dist 3dB Peak [mm]		5.8

Measurement Results

	Area Scan	Zoom Scan
psSAR1g [W/Kg]	0.676	0.790
psSAR10g [W/Kg]	0.224	0.223
Power Drift [dB]	N/A	0.07



Measurement Report for WLAN 5GHz: IEEE 802.11ac WiFi (80MHz, MCS0, 99pc duty cycle), EDGE LEFT

Exposure Conditions

Band	WLAN 5GHz	TSL Permittivity	35.2
Frequency [MHz] Channel Number	5775.000 155	TSL Conductivity [S/m]	5.20
Group UID	WLAN 10544-AAD	Phantom Section TSL	Flat HSL
Conversion Factor	4.86	Test Distance [mm]	5.00

Hardware Setup

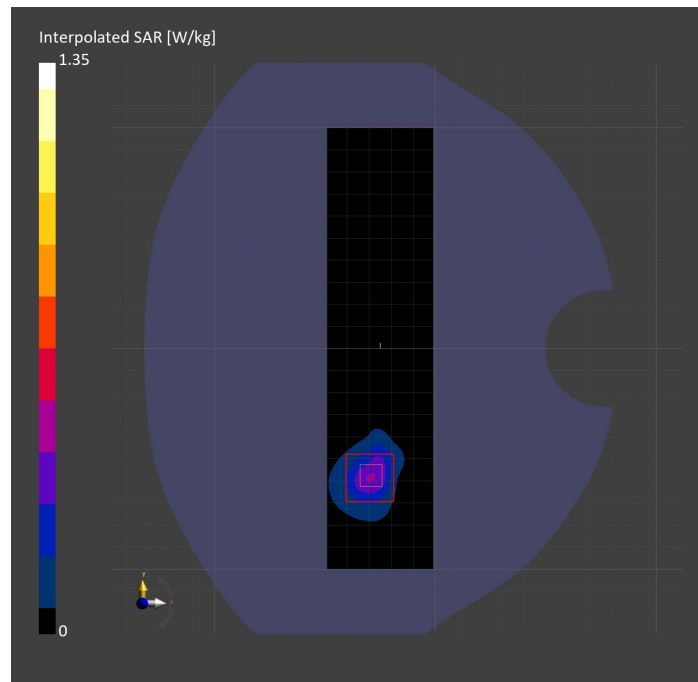
Probe Calibration Date	EX3DV4 - SN7810 2023-04-25	Phantom	Twin-SAM V8.0 (30deg probe tilt)
DAE Calibration Date	DAE4 Sn1439 2023-03-16	TSL Type	HBBL-600-10000
Software Version	16.2.4.2524		

Scan Setup

	Area Scan	Zoom Scan	Secondary Zoom Scan
Grid Extents [mm]	48.0 x 200.0	24.0 x 24.0 x 22.0	24.0 x 24.0 x 22.0
Grid Steps [mm]	8.0 x 10.0	4.0 x 4.0 x 1.4	4.0 x 4.0 x 1.4
Sensor Surface [mm]	3.0	1.4	1.4
Graded Grid	N/A	Yes	Yes
M2/M1 [%]		60.6	60.5
Dist 3dB Peak [mm]		7.4	7.9

Measurement Results

	Area Scan	Zoom Scan	Secondary Zoom Scan
psSAR1g [W/Kg]	0.328	0.341	0.326
psSAR10g [W/Kg]	0.115	0.110	0.105
Power Drift [dB]	N/A	6.77	-2.01



Measurement Report for WLAN 5GHz: IEEE 802.11a/h WiFi 5 GHz (OFDM, 6 Mbps, 99pc duty cycle), CHEEK

Exposure Conditions

Band	WLAN 5GHz	TSL Permittivity	34.2
Frequency [MHz] Channel Number	5745.000 149	TSL Conductivity [S/m]	5.18
Group UID	WLAN 10417-AAD	Phantom Section TSL	RightHead HSL
Conversion Factor	4.86	Test Distance [mm]	0.00

Hardware Setup

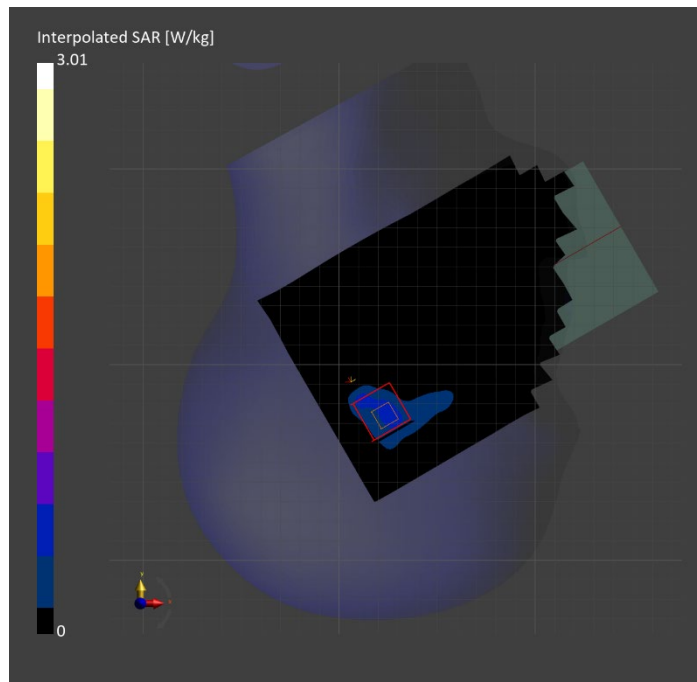
Probe Calibration Date	EX3DV4 - SN7810 2023-04-25	Phantom	Twin-SAM V8.0 (30deg probe tilt)
DAE Calibration Date	DAE4 Sn1439 2023-03-16	TSL Type	HBBL-600-10000
Software Version	16.2.4.2524		

Scan Setup

	Area Scan	Zoom Scan
Grid Extents [mm]	120.0 x 200.0	24.0 x 24.0 x 22.0
Grid Steps [mm]	10.0 x 10.0	4.0 x 4.0 x 1.4
Sensor Surface [mm]	3.0	1.4
Graded Grid	N/A	Yes
M2/M1 [%]		19.4
Dist 3dB Peak [mm]		4.6

Measurement Results

	Area Scan	Zoom Scan
psSAR1g [W/Kg]	0.442	0.597
psSAR10g [W/Kg]	0.169	0.182
Power Drift [dB]	N/A	0.04



Measurement Report for WLAN 5GHz: IEEE 802.11ac WiFi (80MHz, MCS0, 99pc duty cycle), BACK

Exposure Conditions

Band	WLAN 5GHz	TSL Permittivity	33.9
Frequency [MHz] Channel Number	5775.000 155	TSL Conductivity [S/m]	5.35
Group UID	WLAN 10544-AAD	Phantom Section TSL	Flat HSL
Conversion Factor	4.86	Test Distance [mm]	5.00

Hardware Setup

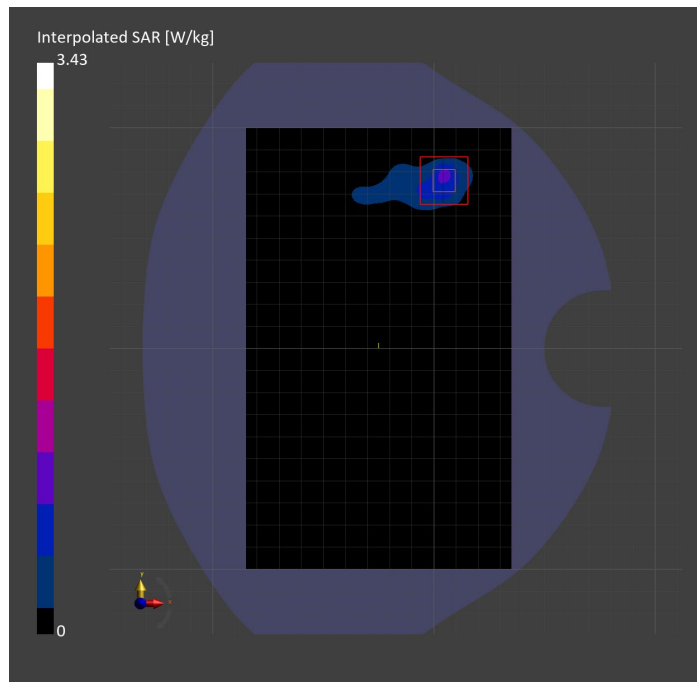
Probe Calibration Date	EX3DV4 - SN7810 2023-04-25	Phantom	Twin-SAM V8.0 (30deg probe tilt)
DAE Calibration Date	DAE4 Sn1439 2023-03-16	TSL Type	HBBL-600-10000
Software Version	16.2.4.2524		

Scan Setup

	Area Scan	Zoom Scan
Grid Extents [mm]	120.0 x 200.0	24.0 x 24.0 x 22.0
Grid Steps [mm]	10.0 x 10.0	4.0 x 4.0 x 1.4
Sensor Surface [mm]	3.0	1.4
Graded Grid	N/A	Yes
M2/M1 [%]		61.5
Dist 3dB Peak [mm]		5.8

Measurement Results

	Area Scan	Zoom Scan
psSAR1g [W/Kg]	0.644	0.766
psSAR10g [W/Kg]	0.212	0.205
Power Drift [dB]	N/A	-0.05



Measurement Report for ISM 2.4 GHz Band: IEEE 802.15.1 Bluetooth (GFSK, DH5), CHEEK

Exposure Conditions

Band	ISM 2.4 GHz Band	TSL Permittivity	37.3
Frequency [MHz] Channel Number	2441.000 39	TSL Conductivity [S/m]	1.87
Group UID	Bluetooth 10032-CAA	Phantom Section TSL	LeftHead HSL
Conversion Factor	7.33	Test Distance [mm]	0.00

Hardware Setup

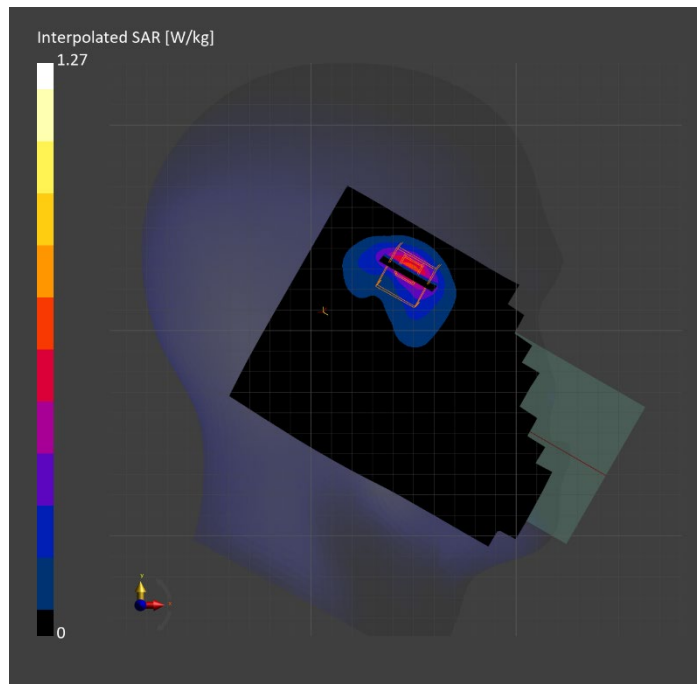
Probe Calibration Date	EX3DV4 - SN3772 2023-02-13	Phantom	Twin-SAM V8.0 (30deg probe tilt)
DAE Calibration Date	DAE4 Sn1359 2023-01-24	TSL Type	HBBL-600-10000
Software Version	16.2.4.2524		

Scan Setup

	Area Scan	Zoom Scan
Grid Extents [mm]	120.0 x 200.0	30.0 x 30.0 x 30.0
Grid Steps [mm]	10.0 x 10.0	5.0 x 5.0 x 1.5
Sensor Surface [mm]	3.0	1.4
Graded Grid	N/A	Yes
M2/M1 [%]		74.9
Dist 3dB Peak [mm]		6.1

Measurement Results

	Area Scan	Zoom Scan
psSAR1g [W/Kg]	0.497	0.517
psSAR10g [W/Kg]	0.220	0.222
Power Drift [dB]	N/A	0.06



Measurement Report for ISM 2.4 GHz Band: IEEE 802.15.1 Bluetooth (GFSK, DH5), BACK

Exposure Conditions

Band	ISM 2.4 GHz Band	TSL Permittivity	37.3
Frequency [MHz] Channel Number	2441.000 39	TSL Conductivity [S/m]	1.87
Group UID	Bluetooth 10032-CAA	Phantom Section TSL	Flat HSL
Conversion Factor	7.33	Test Distance [mm]	5.00

Hardware Setup

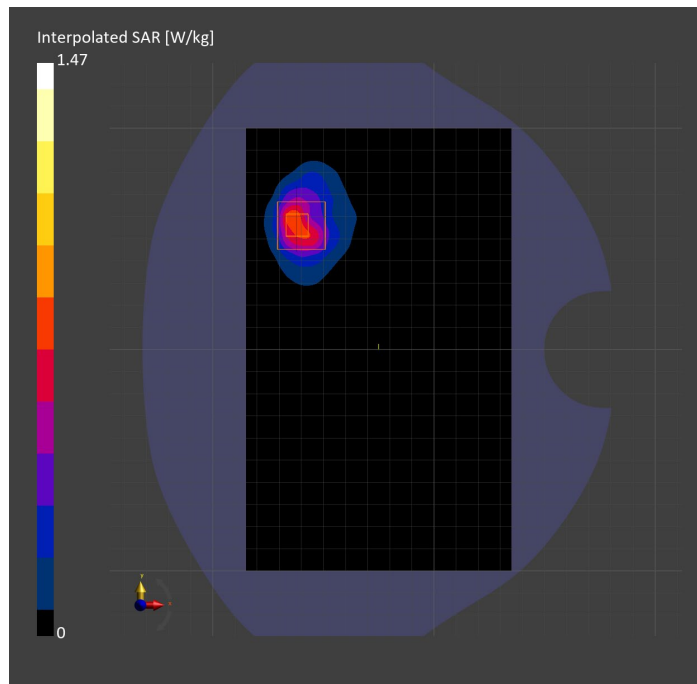
Probe Calibration Date	EX3DV4 - SN3772 2023-02-13	Phantom	Twin-SAM V8.0 (30deg probe tilt)
DAE Calibration Date	DAE4 Sn1359 2023-01-24	TSL Type	HBBL-600-10000
Software Version	16.2.4.2524		

Scan Setup

	Area Scan	Zoom Scan
Grid Extents [mm]	120.0 x 200.0	30.0 x 30.0 x 30.0
Grid Steps [mm]	10.0 x 10.0	5.0 x 5.0 x 1.5
Sensor Surface [mm]	3.0	1.4
Graded Grid	N/A	Yes
M2/M1 [%]		78.8
Dist 3dB Peak [mm]		7.3

Measurement Results

	Area Scan	Zoom Scan
psSAR1g [W/Kg]	0.632	0.646
psSAR10g [W/Kg]	0.299	0.280
Power Drift [dB]	N/A	-0.02



Measurement Report for ISM 2.4 GHz Band: IEEE 802.15.1 Bluetooth (GFSK, DH5), EDGE RIGHT

Exposure Conditions

Band	ISM 2.4 GHz Band	TSL Permittivity	37.3
Frequency [MHz] Channel Number	2441.000 39	TSL Conductivity [S/m]	1.87
Group UID	Bluetooth 10032-CAA	Phantom Section TSL	Flat HSL
Conversion Factor	7.33	Test Distance [mm]	5.00

Hardware Setup

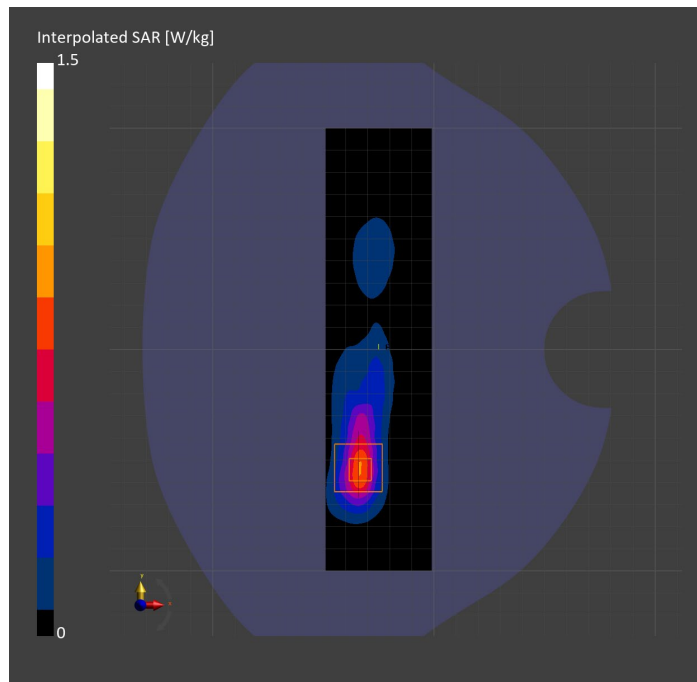
Probe Calibration Date	EX3DV4 - SN3772 2023-02-13	Phantom	Twin-SAM V8.0 (30deg probe tilt)
DAE Calibration Date	DAE4 Sn1359 2023-01-24	TSL Type	HBBL-600-10000
Software Version	16.2.4.2524		

Scan Setup

	Area Scan	Zoom Scan
Grid Extents [mm]	48.0 x 200.0	30.0 x 30.0 x 30.0
Grid Steps [mm]	8.0 x 10.0	5.0 x 5.0 x 1.5
Sensor Surface [mm]	3.0	1.4
Graded Grid	N/A	Yes
M2/M1 [%]		77.8
Dist 3dB Peak [mm]		7.0

Measurement Results

	Area Scan	Zoom Scan
psSAR1g [W/Kg]	0.651	0.666
psSAR10g [W/Kg]	0.279	0.280
Power Drift [dB]	N/A	0.01



Measurement Report for NB U-NII 1: IEEE 802.15.1 Bluetooth (PI/4-DQPSK, DH5), CHEEK

Exposure Conditions

Band	NB U-NII 1	TSL Permittivity	35.2
Frequency [MHz] Channel Number	5230.000 Mid	TSL Conductivity [S/m]	4.49
Group UID	CW 10035-CAA	Phantom Section TSL	RightHead HSL
Conversion Factor	5.14	Test Distance [mm]	0.00

Hardware Setup

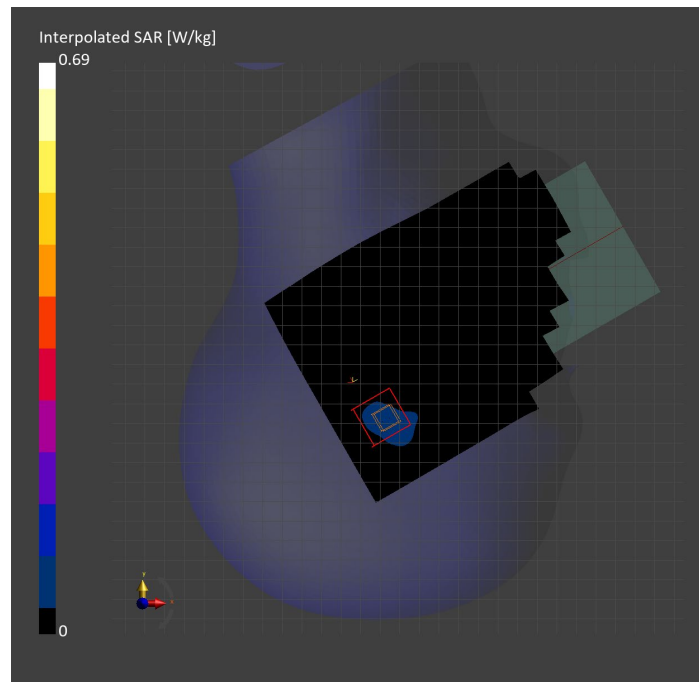
Probe Calibration Date	EX3DV4 - SN3773 2023-02-13	Phantom	Twin-SAM V5.0 (30deg probe tilt)
DAE Calibration Date	DAE4 Sn1258 2023-03-16	TSL Type	HBBL-600-10000
Software Version	16.2.4.2524		

Scan Setup

	Area Scan	Zoom Scan	Secondary Zoom Scan
Grid Extents [mm]	120.0 x 200.0	24.0 x 24.0 x 22.0	24.0 x 24.0 x 22.0
Grid Steps [mm]	10.0 x 10.0	4.0 x 4.0 x 1.4	4.0 x 4.0 x 1.4
Sensor Surface [mm]	3.0	1.4	1.4
Graded Grid	N/A	Yes	Yes
M2/M1 [%]		63.8	64.6
Dist 3dB Peak [mm]		5.2	5.2

Measurement Results

	Area Scan	Zoom Scan	Secondary Zoom Scan
psSAR1g [W/Kg]	0.073	0.090	0.090
psSAR10g [W/Kg]	0.028	0.024	0.025
Power Drift [dB]	N/A	0.57	-0.37



Measurement Report for NB U-NII 1: IEEE 802.15.1 Bluetooth (PI/4-DQPSK, DH5), BACK

Exposure Conditions

Band	NB U-NII 1	TSL Permittivity	35.2
Frequency [MHz] Channel Number	5230.000 Mid	TSL Conductivity [S/m]	4.49
Group UID	CW 10035-CAA	Phantom Section TSL	Flat HSL
Conversion Factor	5.14	Test Distance [mm]	5.00

Hardware Setup

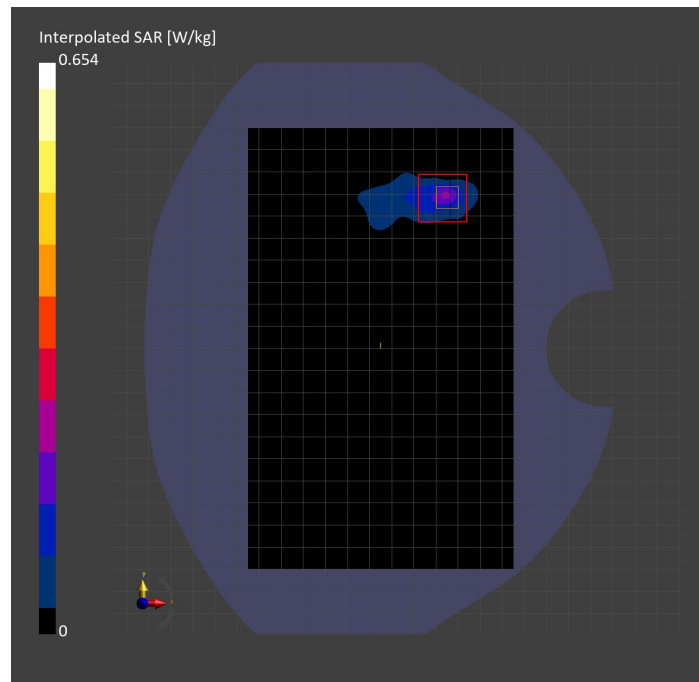
Probe Calibration Date	EX3DV4 - SN3773 2023-02-13	Phantom	Twin-SAM V5.0 (30deg probe tilt)
DAE Calibration Date	DAE4 Sn1258 2023-03-16	TSL Type	HBBL-600-10000
Software Version	16.2.4.2524		

Scan Setup

	Area Scan	Zoom Scan	Secondary Zoom Scan
Grid Extents [mm]	120.0 x 200.0	24.0 x 24.0 x 22.0	24.0 x 24.0 x 22.0
Grid Steps [mm]	10.0 x 10.0	4.0 x 4.0 x 1.4	4.0 x 4.0 x 1.4
Sensor Surface [mm]	3.0	1.4	1.4
Graded Grid	N/A	Yes	Yes
M2/M1 [%]		63.2	60.5
Dist 3dB Peak [mm]		5.6	5.4

Measurement Results

	Area Scan	Zoom Scan	Secondary Zoom Scan
psSAR1g [W/Kg]	0.143	0.153	0.153
psSAR10g [W/Kg]	0.044	0.045	0.041
Power Drift [dB]	N/A	-0.27	-0.13



Measurement Report for NB U-NII 1: IEEE 802.15.1 Bluetooth (PI/4-DQPSK, DH5), EDGE LEFT

Exposure Conditions

Band	NB U-NII 1	TSL Permittivity	35.6
Frequency [MHz] Channel Number	5230.000 Mid	TSL Conductivity [S/m]	4.48
Group UID	CW 10035-CAA	Phantom Section TSL	Flat HSL
Conversion Factor	5.59	Test Distance [mm]	5.00

Hardware Setup

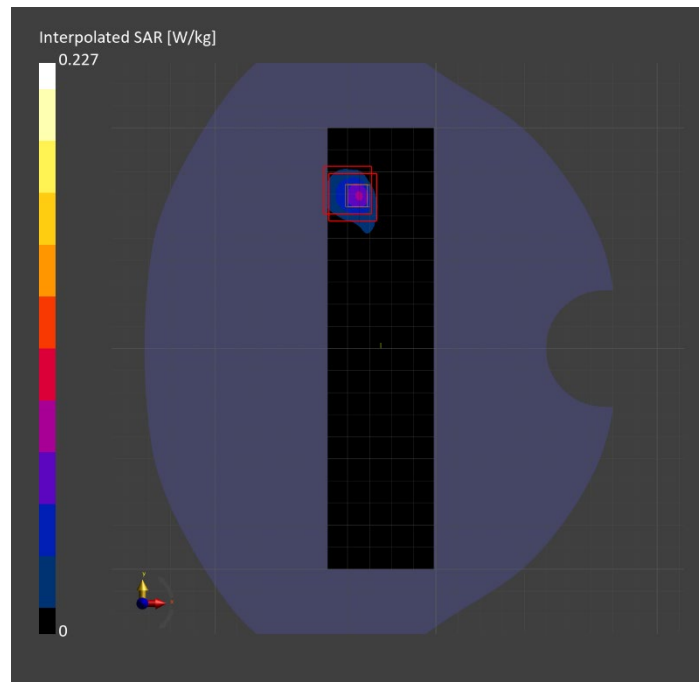
Probe Calibration Date	EX3DV4 - SN3929 2023-04-26	Phantom	Twin-SAM V5.0 (30deg probe tilt)
DAE Calibration Date	DAE4 Sn1675 2023-05-11	TSL Type	HBBL-600-10000
Software Version	16.2.4.2524		

Scan Setup

	Area Scan	Zoom Scan	Secondary Zoom Scan
Grid Extents [mm]	48.0 x 200.0	24.0 x 24.0 x 22.0	24.0 x 24.0 x 22.0
Grid Steps [mm]	8.0 x 10.0	4.0 x 4.0 x 1.4	4.0 x 4.0 x 1.4
Sensor Surface [mm]	3.0	1.4	1.4
Graded Grid	N/A	Yes	Yes
M2/M1 [%]		56.2	62.1
Dist 3dB Peak [mm]		6.4	6.4

Measurement Results

	Area Scan	Zoom Scan	Secondary Zoom Scan
psSAR1g [W/Kg]	0.049	0.044	0.054
psSAR10g [W/Kg]	0.015	0.004	0.012
Power Drift [dB]	N/A	0.56	0.73



Measurement Report for NB U-NII 3: IEEE 802.15.1 Bluetooth (GFSK, DH5), TILT

Exposure Conditions

Band	NB U-NII 3	TSL Permittivity	34.0
Frequency [MHz] Channel Number	5788.000 Mid	TSL Conductivity [S/m]	5.05
Group UID	CW 10032-CAA	Phantom Section TSL	RightHead HSL
Conversion Factor	5.15	Test Distance [mm]	0.00

Hardware Setup

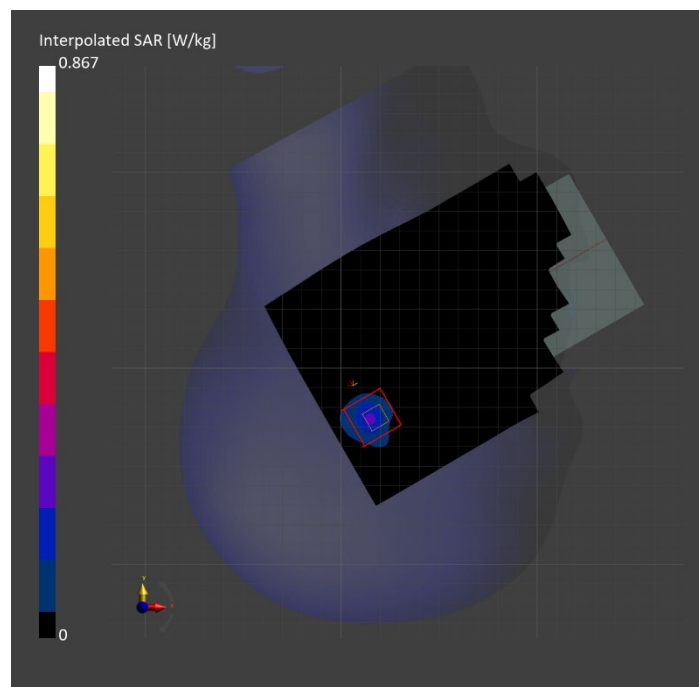
Probe Calibration Date	EX3DV4 - SN3902 2023-03-17	Phantom	Twin-SAM V5.0 (30deg probe tilt)
DAE Calibration Date	DAE4 Sn1797 2023-04-03	TSL Type	HBBL-600-10000
Software Version	16.2.4.2524		

Scan Setup

	Area Scan	Zoom Scan	Secondary Zoom Scan
Grid Extents [mm]	120.0 x 200.0	24.0 x 24.0 x 22.0	24.0 x 24.0 x 22.0
Grid Steps [mm]	10.0 x 10.0	4.0 x 4.0 x 1.4	4.0 x 4.0 x 1.4
Sensor Surface [mm]	3.0	1.4	1.4
Graded Grid	N/A	Yes	Yes
M2/M1 [%]		61.9	61.8
Dist 3dB Peak [mm]		7.3	6.5

Measurement Results

	Area Scan	Zoom Scan	Secondary Zoom Scan
psSAR1g [W/Kg]	0.155	0.158	0.158
psSAR10g [W/Kg]	0.050	0.045	0.047
Power Drift [dB]	N/A	0.51	-0.45



Measurement Report for NB U-NII 3: IEEE 802.15.1 Bluetooth (GFSK, DH5), BACK

Exposure Conditions

Band	NB U-NII 3	TSL Permittivity	34.0
Frequency [MHz] Channel Number	5844.000 5844000	TSL Conductivity [S/m]	5.29
Group UID	CW 10032-CAA	Phantom Section TSL	Flat HSL
Conversion Factor	4.86	Test Distance [mm]	5.00

Hardware Setup

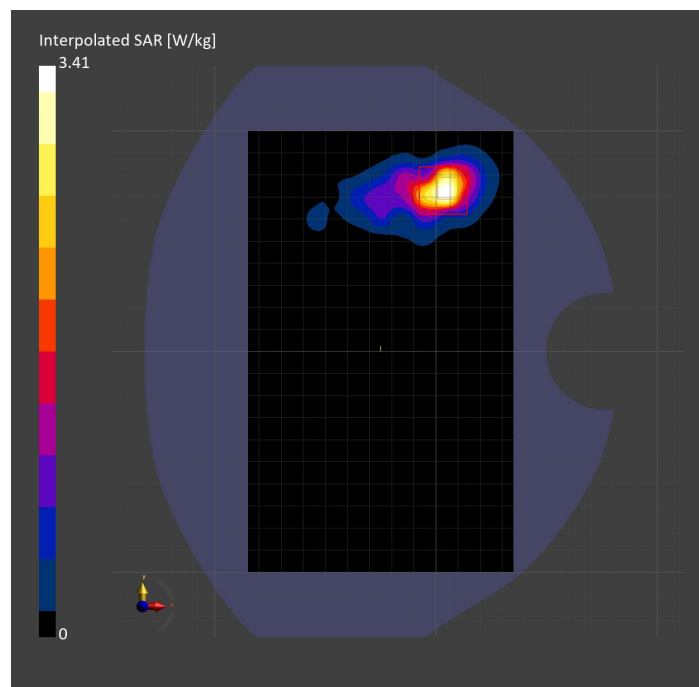
Probe Calibration Date	EX3DV4 - SN7810 2023-04-25	Phantom	Twin-SAM V8.0 (30deg probe tilt)
DAE Calibration Date	DAE4 Sn1439 2023-03-16	TSL Type	HBBL-600-10000
Software Version	16.2.4.2524		

Scan Setup

	Area Scan	Zoom Scan
Grid Extents [mm]	120.0 x 200.0	24.0 x 24.0 x 22.0
Grid Steps [mm]	10.0 x 10.0	4.0 x 4.0 x 1.4
Sensor Surface [mm]	3.0	1.4
Graded Grid	N/A	Yes
M2/M1 [%]		59.1
Dist 3dB Peak [mm]		5.8

Measurement Results

	Area Scan	Zoom Scan
psSAR1g [W/Kg]	0.704	0.781
psSAR10g [W/Kg]	0.232	0.229
Power Drift [dB]	N/A	-0.09



Measurement Report for NB U-NII 3: IEEE 802.15.1 Bluetooth (GFSK, DH5), EDGE LEFT

Exposure Conditions

Band	NB U-NII 3	TSL Permittivity	34.1
Frequency [MHz] Channel Number	5788.000 Mid	TSL Conductivity [S/m]	5.22
Group UID	CW 10032-CAA	Phantom Section TSL	Flat HSL
Conversion Factor	4.86	Test Distance [mm]	5.00

Hardware Setup

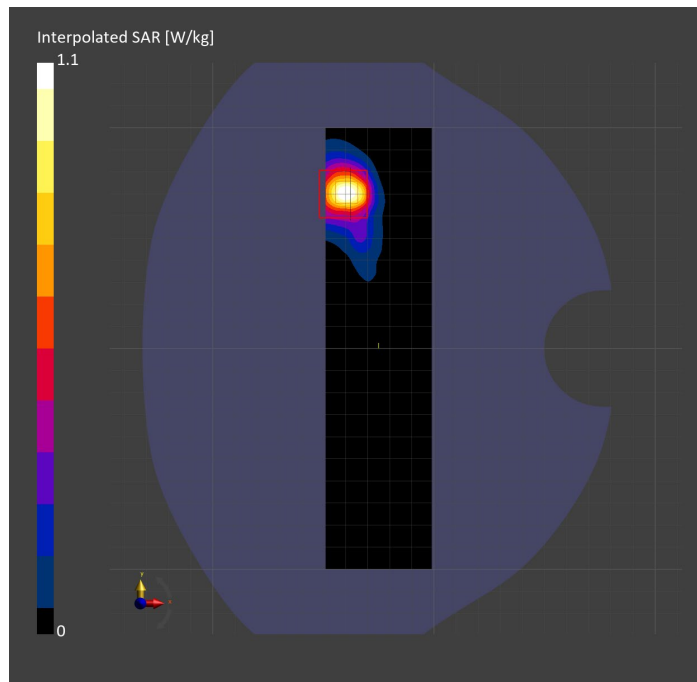
Probe Calibration Date	EX3DV4 - SN7810 2023-04-25	Phantom	Twin-SAM V8.0 (30deg probe tilt)
DAE Calibration Date	DAE4 Sn1439 2023-03-16	TSL Type	HBBL-600-10000
Software Version	16.2.4.2524		

Scan Setup

	Area Scan	Zoom Scan
Grid Extents [mm]	48.0 x 200.0	24.0 x 24.0 x 22.0
Grid Steps [mm]	8.0 x 10.0	4.0 x 4.0 x 1.4
Sensor Surface [mm]	3.0	1.4
Graded Grid	N/A	Yes
M2/M1 [%]		62.8
Dist 3dB Peak [mm]		6.8

Measurement Results

	Area Scan	Zoom Scan
psSAR1g [W/Kg]	0.287	0.282
psSAR10g [W/Kg]	0.093	0.091
Power Drift [dB]	N/A	-0.03



Measurement Report for Custom Band: CW, BACK

Exposure Conditions

Band	Custom Band	TSL Permittivity	39.7
Frequency [MHz] Channel Number	1617.600 1617600	TSL Conductivity [S/m]	1.27
Group UID	CW 0--	Phantom Section TSL	Flat HSL
Conversion Factor	8.86	Test Distance [mm]	5.00

Hardware Setup

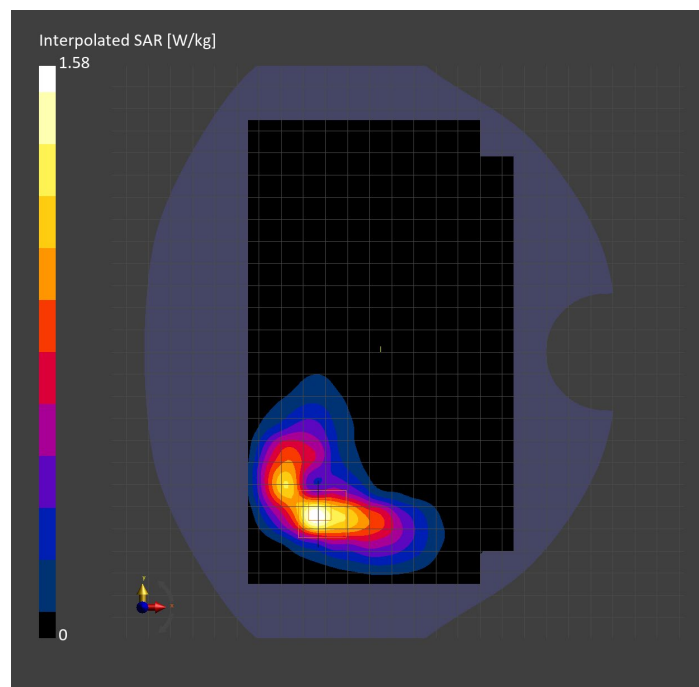
Probe Calibration Date	EX3DV4 - SN3989 2023-01-26	Phantom	Twin-SAM V8.0 (30deg probe tilt)
DAE Calibration Date	DAE4 Sn1257 2022-09-20	TSL Type	HBBL-600-10000
Software Version	16.2.4.2524		

Scan Setup

	Area Scan	Zoom Scan
Grid Extents [mm]	120.0 x 210.0	30.0 x 30.0 x 30.0
Grid Steps [mm]	15.0 x 15.0	6.0 x 6.0 x 1.5
Sensor Surface [mm]	3.0	1.4
Graded Grid	N/A	Yes
M2/M1 [%]		84.9
Dist 3dB Peak [mm]		8.4

Measurement Results

	Area Scan	Zoom Scan
psSAR1g [W/Kg]	0.732	0.858
psSAR10g [W/Kg]	0.378	0.430
Power Drift [dB]	N/A	-0.00



Measurement Report for Custom Band: CW, EDGE RIGHT

Exposure Conditions

Band	Custom Band	TSL Permittivity	40.1
Frequency [MHz] Channel Number	1625.100 1625100	TSL Conductivity [S/m]	1.24
Group UID	CW 0--	Phantom Section TSL	Flat HSL
Conversion Factor	8.86	Test Distance [mm]	5.00

Hardware Setup

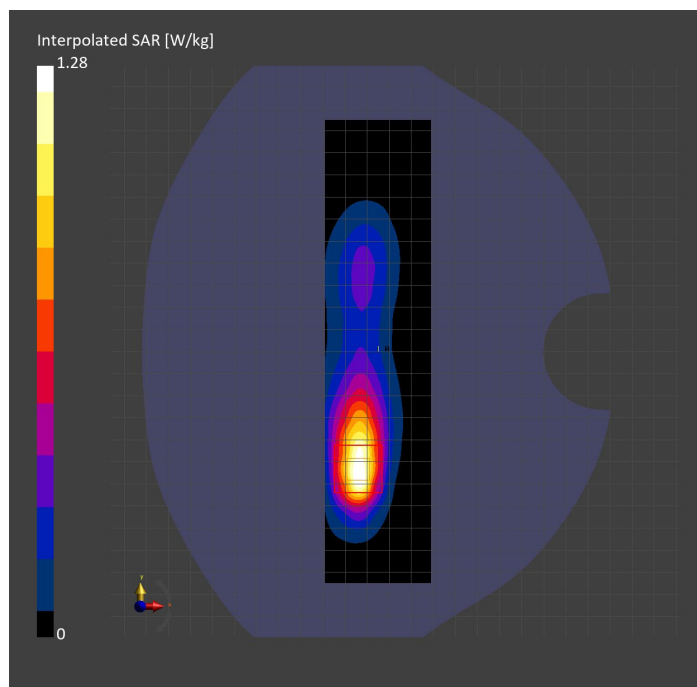
Probe Calibration Date	EX3DV4 - SN3989 2023-01-26	Phantom	Twin-SAM V8.0 (30deg probe tilt)
DAE Calibration Date	DAE4 Sn1257 2022-09-20	TSL Type	HBBL-600-10000
Software Version	16.2.4.2524		

Scan Setup

	Area Scan	Zoom Scan
Grid Extents [mm]	48.0 x 210.0	30.0 x 30.0 x 30.0
Grid Steps [mm]	8.0 x 15.0	6.0 x 6.0 x 1.5
Sensor Surface [mm]	3.0	1.4
Graded Grid	N/A	Yes
M2/M1 [%]		82.8
Dist 3dB Peak [mm]		7.2

Measurement Results

	Area Scan	Zoom Scan
psSAR1g [W/Kg]	0.735	0.716
psSAR10g [W/Kg]	0.375	0.359
Power Drift [dB]	N/A	-0.02



Measurement Report for Thread 2.4 (802.15.4): CW, CHEEK

Exposure Conditions

Band	Thread 2.4 (802.15.4)	TSL Permittivity	37.5
Frequency [MHz] Channel Number	2440.000 Mid	TSL Conductivity [S/m]	1.83
Group UID	CW 0--	Phantom Section TSL	LeftHead HSL
Conversion Factor	7.33	Test Distance [mm]	0.00

Hardware Setup

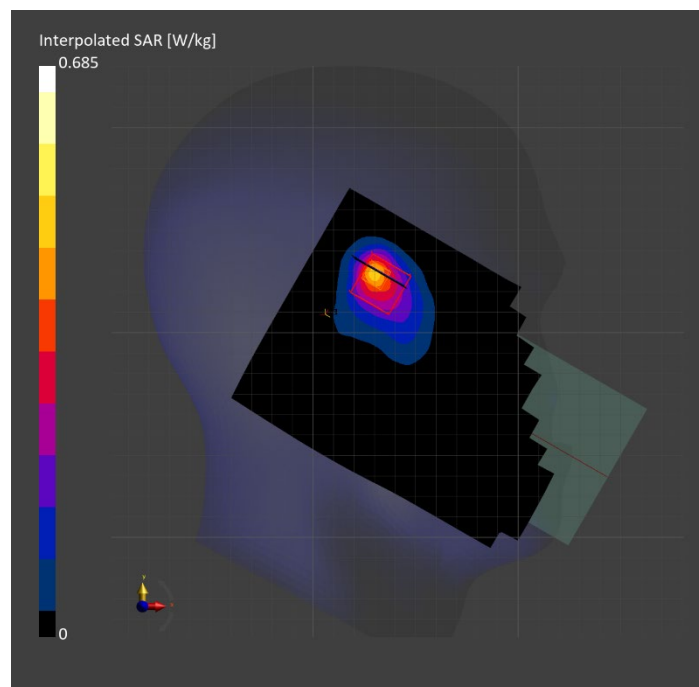
Probe Calibration Date	EX3DV4 - SN3772 2023-02-13	Phantom	Twin-SAM V8.0 (30deg probe tilt)
DAE Calibration Date	DAE4 Sn1359 2023-01-24	TSL Type	HBBL-600-10000
Software Version	16.2.4.2524		

Scan Setup

	Area Scan	Zoom Scan
Grid Extents [mm]	120.0 x 200.0	30.0 x 30.0 x 30.0
Grid Steps [mm]	10.0 x 10.0	5.0 x 5.0 x 1.5
Sensor Surface [mm]	3.0	1.4
Graded Grid	N/A	Yes
M2/M1 [%]		86.9
Dist 3dB Peak [mm]		9.0

Measurement Results

	Area Scan	Zoom Scan
psSAR1g [W/Kg]	0.355	0.368
psSAR10g [W/Kg]	0.164	0.169
Power Drift [dB]	N/A	0.00



Measurement Report for Thread 2.4 (802.15.4): CW, BACK

Exposure Conditions

Band	Thread 2.4 (802.15.4)	TSL Permittivity	37.5
Frequency [MHz] Channel Number	2440.000 Mid	TSL Conductivity [S/m]	1.83
Group UID	CW 0--	Phantom Section TSL	Flat HSL
Conversion Factor	7.33	Test Distance [mm]	5.00

Hardware Setup

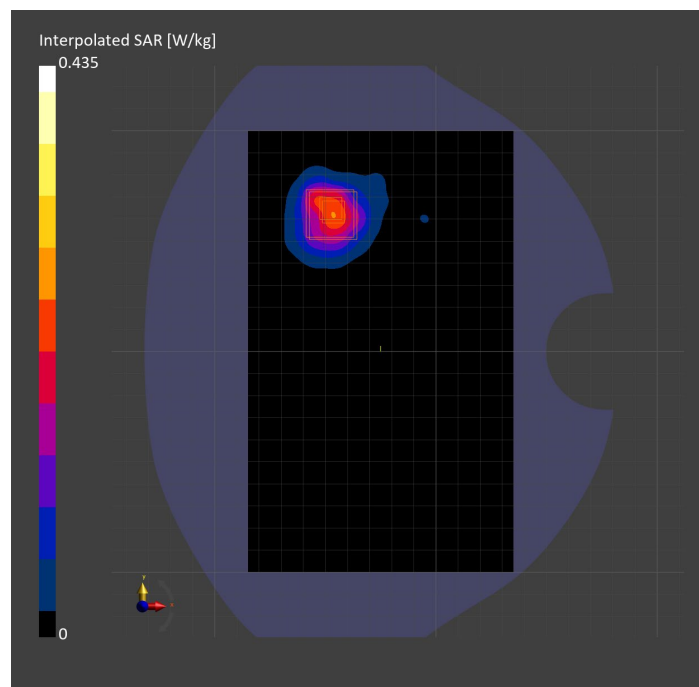
Probe Calibration Date	EX3DV4 - SN3772 2023-02-13	Phantom	Twin-SAM V8.0 (30deg probe tilt)
DAE Calibration Date	DAE4 Sn1359 2023-01-24	TSL Type	HBBL-600-10000
Software Version	16.2.4.2524		

Scan Setup

	Area Scan	Zoom Scan
Grid Extents [mm]	120.0 x 200.0	30.0 x 30.0 x 30.0
Grid Steps [mm]	10.0 x 10.0	5.0 x 5.0 x 1.5
Sensor Surface [mm]	3.0	1.4
Graded Grid	N/A	Yes
M2/M1 [%]		77.9
Dist 3dB Peak [mm]		9.5

Measurement Results

	Area Scan	Zoom Scan
psSAR1g [W/Kg]	0.201	0.209
psSAR10g [W/Kg]	0.10	0.098
Power Drift [dB]	N/A	0.01



Measurement Report for Thread 2.4 (802.15.4): CW, EDGE RIGHT

Exposure Conditions

Band	Thread 2.4 (802.15.4)	TSL Permittivity	37.5
Frequency [MHz] Channel Number	2440.000 Mid	TSL Conductivity [S/m]	1.83
Group UID	CW 0--	Phantom Section TSL	Flat HSL
Conversion Factor	7.33	Test Distance [mm]	5.00

Hardware Setup

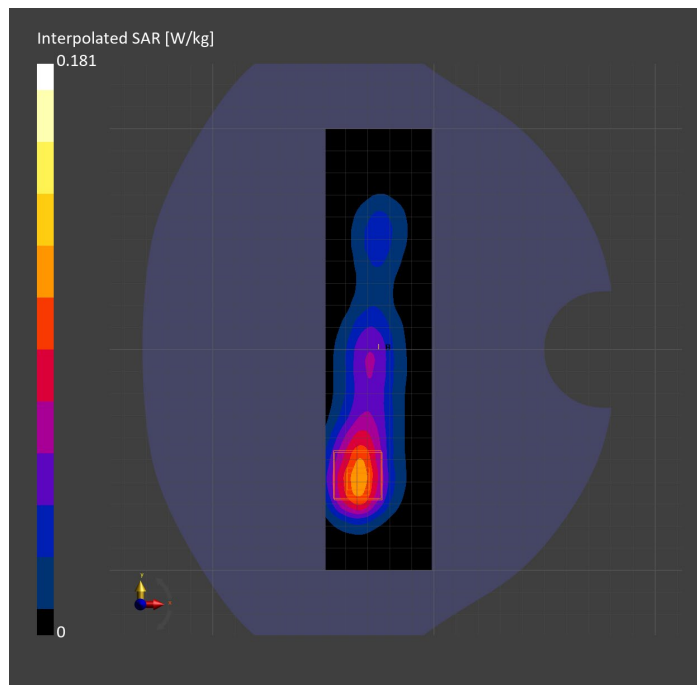
Probe Calibration Date	EX3DV4 - SN3772 2023-02-13	Phantom	Twin-SAM V8.0 (30deg probe tilt)
DAE Calibration Date	DAE4 Sn1359 2023-01-24	TSL Type	HBBL-600-10000
Software Version	16.2.4.2524		

Scan Setup

	Area Scan	Zoom Scan
Grid Extents [mm]	48.0 x 200.0	30.0 x 30.0 x 30.0
Grid Steps [mm]	8.0 x 10.0	5.0 x 5.0 x 1.5
Sensor Surface [mm]	3.0	1.4
Graded Grid	N/A	Yes
M2/M1 [%]		79.5
Dist 3dB Peak [mm]		10.8

Measurement Results

	Area Scan	Zoom Scan
psSAR1g [W/Kg]	0.090	0.086
psSAR10g [W/Kg]	0.046	0.043
Power Drift [dB]	N/A	-0.15



Measurement Report for 802.15.4ab: Pulse Waveform (200Hz, 10%), CHEEK

Exposure Conditions

Band	802.15.4ab	TSL Permittivity	34.2
Frequency [MHz] Channel Number	5786.300 18	TSL Conductivity [S/m]	5.01
Group UID	CW 10658-AAB	Phantom Section TSL	RightHead HSL
Conversion Factor	4.86	Test Distance [mm]	0.00

Hardware Setup

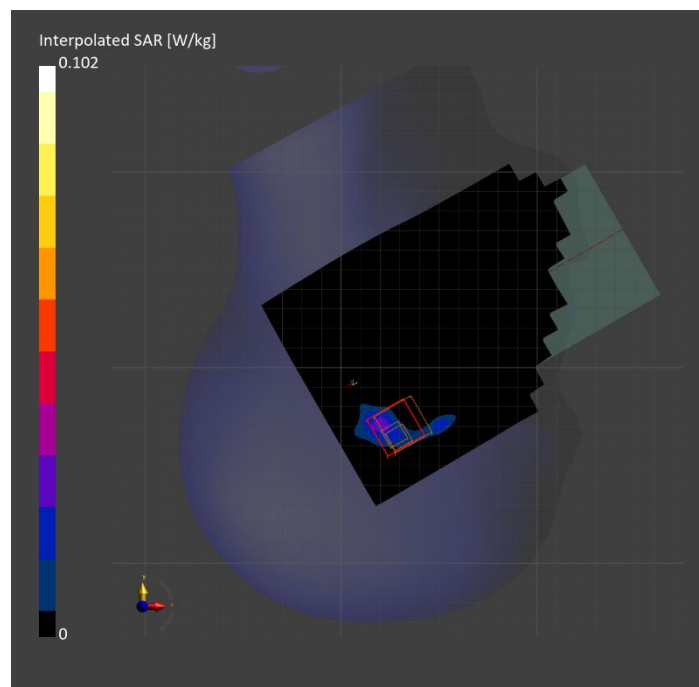
Probe Calibration Date	EX3DV4 - SN7810 2023-04-25	Phantom	Twin-SAM V8.0 (30deg probe tilt)
DAE Calibration Date	DAE4 Sn1439 2023-03-16	TSL Type	HBBL-600-10000
Software Version	16.2.4.2524		

Scan Setup

	Area Scan	Zoom Scan	Secondary Zoom Scan
Grid Extents [mm]	120.0 x 200.0	24.0 x 24.0 x 22.0	24.0 x 24.0 x 22.0
Grid Steps [mm]	10.0 x 10.0	4.0 x 4.0 x 1.4	4.0 x 4.0 x 1.4
Sensor Surface [mm]	3.0	1.4	1.4
Graded Grid	N/A	Yes	Yes
M2/M1 [%]		56.6	52.8
Dist 3dB Peak [mm]		2.5	4.7

Measurement Results

	Area Scan	Zoom Scan	Secondary Zoom Scan
psSAR1g [W/Kg]	0.020	0.016	0.016
psSAR10g [W/Kg]	0.006	0.004	0.003
Power Drift [dB]	N/A	0.29	-6.23



Measurement Report for 802.15.4ab: Pulse Waveform (200Hz, 10%), BACK

Exposure Conditions

Band	802.15.4ab	TSL Permittivity	33.9
Frequency [MHz] Channel Number	5786.300 18	TSL Conductivity [S/m]	5.36
Group UID	CW 10658-AAB	Phantom Section TSL	Flat HSL
Conversion Factor	4.86	Test Distance [mm]	5.00

Hardware Setup

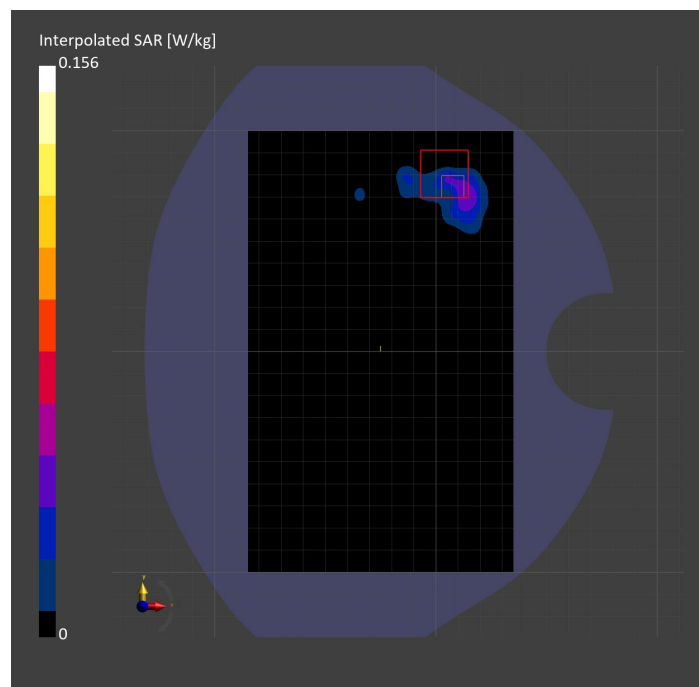
Probe Calibration Date	EX3DV4 - SN7810 2023-04-25	Phantom	Twin-SAM V8.0 (30deg probe tilt)
DAE Calibration Date	DAE4 Sn1439 2023-03-16	TSL Type	HBBL-600-10000
Software Version	16.2.4.2524		

Scan Setup

	Area Scan	Zoom Scan
Grid Extents [mm]	120.0 x 200.0	24.0 x 24.0 x 22.0
Grid Steps [mm]	10.0 x 10.0	4.0 x 4.0 x 1.4
Sensor Surface [mm]	3.0	1.4
Graded Grid	N/A	Yes
M2/M1 [%]		61.3
Dist 3dB Peak [mm]		3.2

Measurement Results

	Area Scan	Zoom Scan
psSAR1g [W/Kg]	0.022	0.027
psSAR10g [W/Kg]	0.008	0.002
Power Drift [dB]	N/A	0.18



Measurement Report for 802.15.4ab: Pulse Waveform (200Hz, 10%), EDGE LEFT

Exposure Conditions

Band	802.15.4ab	TSL Permittivity	34.0
Frequency [MHz] Channel Number	5786.300 18	TSL Conductivity [S/m]	5.04
Group UID	CW 10658-AAB	Phantom Section TSL	Flat HSL
Conversion Factor	5.15	Test Distance [mm]	5.00

Hardware Setup

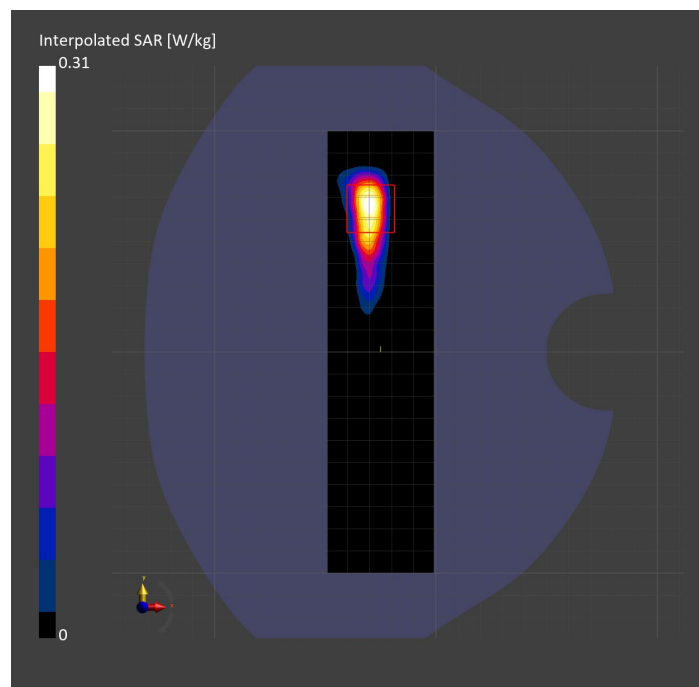
Probe Calibration Date	EX3DV4 - SN3902 2023-03-17	Phantom	Twin-SAM V5.0 (30deg probe tilt)
DAE Calibration Date	DAE4 Sn1797 2023-04-03	TSL Type	HBBL-600-10000
Software Version	16.2.4.2524		

Scan Setup

	Area Scan	Zoom Scan
Grid Extents [mm]	48.0 x 200.0	24.0 x 24.0 x 22.0
Grid Steps [mm]	8.0 x 10.0	4.0 x 4.0 x 1.4
Sensor Surface [mm]	3.0	1.4
Graded Grid	N/A	Yes
M2/M1 [%]		58.8
Dist 3dB Peak [mm]		6.1

Measurement Results

	Area Scan	Zoom Scan
psSAR1g [W/Kg]	0.074	0.068
psSAR10g [W/Kg]	0.022	0.016
Power Drift [dB]	N/A	-0.19



Measurement Report for Custom Band: CW, EDGE TOP

Exposure Conditions

Band	Custom Band	TSL Permittivity	55.4
Frequency [MHz] Channel Number	13.600 13600	TSL Conductivity [S/m]	0.718
Group UID	CW 0--	Phantom Section TSL	Flat HSL
Conversion Factor	19.03	Test Distance [mm]	0.00

Hardware Setup

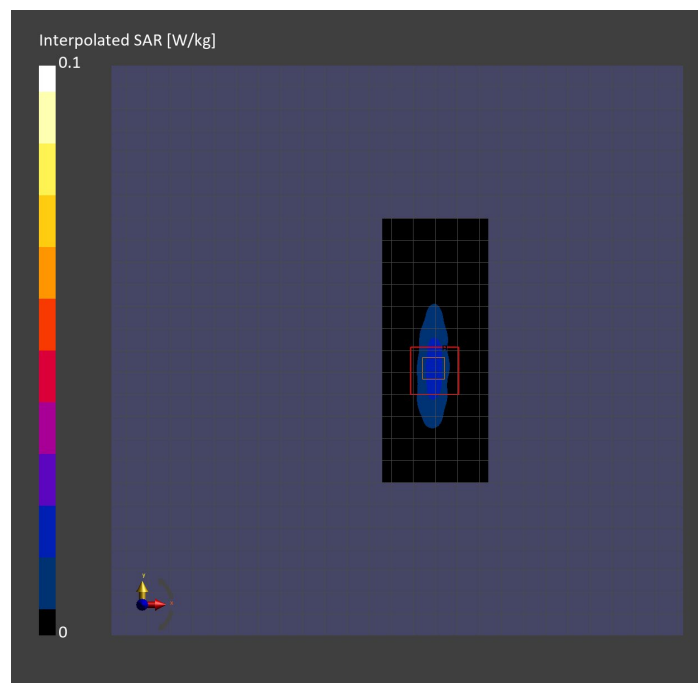
Probe Calibration Date	EX3DV4 - SN3989 2023-01-26	Phantom	ELI V8.0 (20deg probe tilt)
DAE Calibration Date	DAE4 Sn1257 2022-09-20	TSL Type	HBBL4-250V3
Software Version	16.2.4.2524		

Scan Setup

	Area Scan	Zoom Scan
Grid Extents [mm]	48.0 x 120.0	30.0 x 30.0 x 30.0
Grid Steps [mm]	8.0 x 15.0	6.0 x 6.0 x 1.5
Sensor Surface [mm]	3.0	1.4
Graded Grid	N/A	Yes
M2/M1 [%]		58.3
Dist 3dB Peak [mm]		6.1

Measurement Results

	Area Scan	Zoom Scan
psSAR1g [W/Kg]	0.018	0.017
psSAR10g [W/Kg]	0.010	0.006
Power Drift [dB]	N/A	-0.01



Band n41: 5G NR (DFT-s-OFDM, 1 RB, 100 MHz, QPSK, 30 kHz) RBPosition:Mid AntennaCfg:SISO, EDGE RIGHT

Exposure Conditions

Band	Band n41	TSL Permittivity	39.6
Frequency [MHz] Channel Number	2592.990 518598	TSL Conductivity [S/m]	1.93
Group UID	5G NR FR1 TDD 10866-AAF	Phantom Section TSL	Flat HSL
Conversion Factor	7.39	Test Distance [mm]	25.00

Hardware Setup

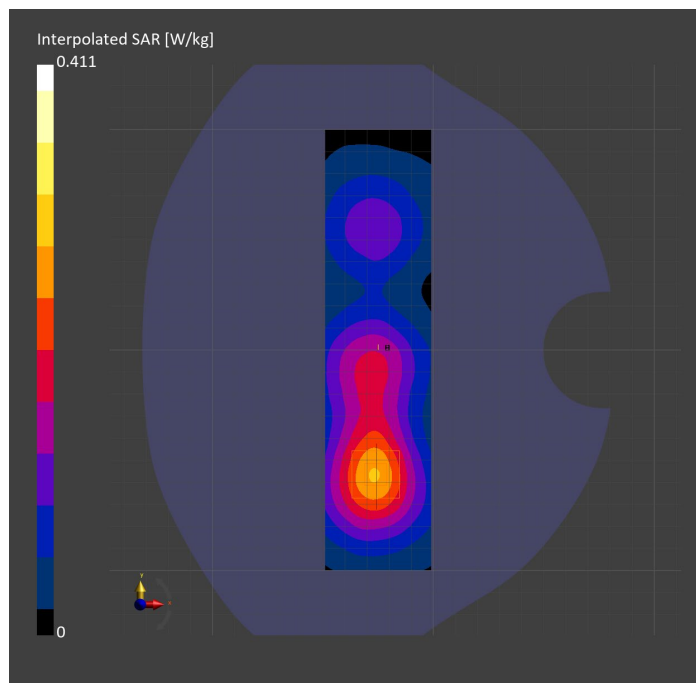
Probe Calibration Date	EX3DV4 - SN7448 2023-02-14	Phantom	Twin-SAM V5.0 (30deg probe tilt)
DAE Calibration Date	DAE4 Sn1472 2023-01-23	TSL Type	HBBL-600-10000
Software Version	16.2.4.2524		

Scan Setup

	Area Scan	Zoom Scan
Grid Extents [mm]	48.0 x 200.0	30.0 x 30.0 x 30.0
Grid Steps [mm]	8.0 x 10.0	5.0 x 5.0 x 1.5
Sensor Surface [mm]	3.0	1.4
Graded Grid	N/A	Yes
M2/M1 [%]		80.5
Dist 3dB Peak [mm]		22.1
Peak SAR [W/kg] SAR Peak Location [mm]	N/A	0.411 [-25.6, -60.5, -207.0]

Measurement Results

	Area Scan	Zoom Scan
psSAR1g [W/Kg]	0.223	0.221
psSAR10g [W/Kg]	0.123	0.120
Power Drift [dB]	N/A	-0.03



**Band n77: 5G NR (DFT-s-OFDM, 50% RB, 100 MHz, QPSK, 30 kHz) RBPosition:Mid
AntennaCfg:SISO, BACK**

Exposure Conditions

Band	Band n77	TSL Permittivity	39.3
Frequency [MHz] Channel Number	3858.000 657200	TSL Conductivity [S/m]	3.13
Group UID	5G NR FR1 TDD 10917-AAD	Phantom Section TSL	Flat HSL
Conversion Factor	7.12	Test Distance [mm]	25.00

Hardware Setup

Probe Calibration Date	EX3DV4 - SN3989 2023-01-26	Phantom	Twin-SAM V8.0 (30deg probe tilt)
DAE Calibration Date	DAE4 Sn1547 2023-04-18	TSL Type	HBBL-600-10000
Software Version	16.2.4.2524		

Scan Setup

	Area Scan	Zoom Scan
Grid Extents [mm]	120.0 x 200.0	30.0 x 30.0 x 28.0
Grid Steps [mm]	10.0 x 10.0	5.0 x 5.0 x 1.4
Sensor Surface [mm]	3.0	1.4
Graded Grid	N/A	Yes
M2/M1 [%]		75.0
Dist 3dB Peak [mm]		19.2
Peak SAR [W/kg] SAR Peak Location [mm]	N/A	0.371 [12.0, -78.0, -207.0]

Measurement Results

	Area Scan	Zoom Scan
psSAR1g [W/Kg]	0.162	0.161
psSAR10g [W/Kg]	0.078	0.078
Power Drift [dB]	N/A	0.16

