

Measurement Report for GSM 850: GPRS-FDD (TDMA, GMSK, TN 0-1), BACK

Exposure Conditions

Band	GSM 850	TSL Permittivity	41.4
Frequency [MHz] Channel Number	836.600 190	TSL Conductivity [S/m]	0.874
Group UID	GSM 10024-DAC	Phantom Section TSL	Flat HSL
Conversion Factor	8.76	Test Distance [mm]	5.00

Hardware Setup

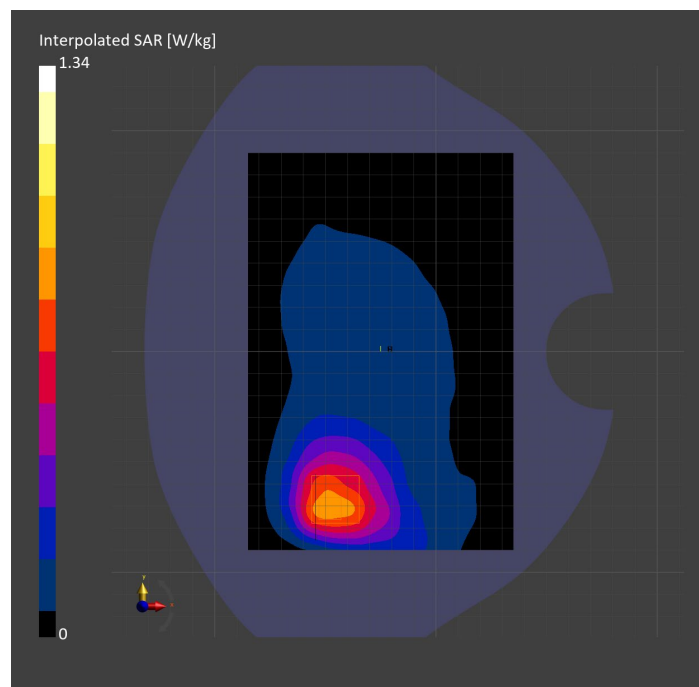
Probe Calibration Date	EX3DV4 - SN7806 2023-04-04	Phantom	Twin-SAM V8.0 (30deg probe tilt)
DAE Calibration Date	DAE4 Sn1784 2023-04-03	TSL Type	HBBL-600-10000
Software Version	16.2.4.2524		

Scan Setup

	Area Scan	Zoom Scan
Grid Extents [mm]	120.0 x 180.0	30.0 x 30.0 x 30.0
Grid Steps [mm]	15.0 x 15.0	6.0 x 6.0 x 1.5
Sensor Surface [mm]	3.0	1.4
Graded Grid	N/A	Yes
M2/M1 [%]		81.0
Dist 3dB Peak [mm]		12.1

Measurement Results

	Area Scan	Zoom Scan
psSAR1g [W/Kg]	0.749	0.758
psSAR10g [W/Kg]	0.484	0.482
Power Drift [dB]	N/A	-0.02



Measurement Report for GSM 850: GPRS-FDD (TDMA, GMSK, TN 0-1), EDGE RIGHT

Exposure Conditions

Band	GSM 850	TSL Permittivity	41.4
Frequency [MHz] Channel Number	836.600 190	TSL Conductivity [S/m]	0.874
Group UID	GSM 10024-DAC	Phantom Section TSL	Flat HSL
Conversion Factor	8.76	Test Distance [mm]	5.00

Hardware Setup

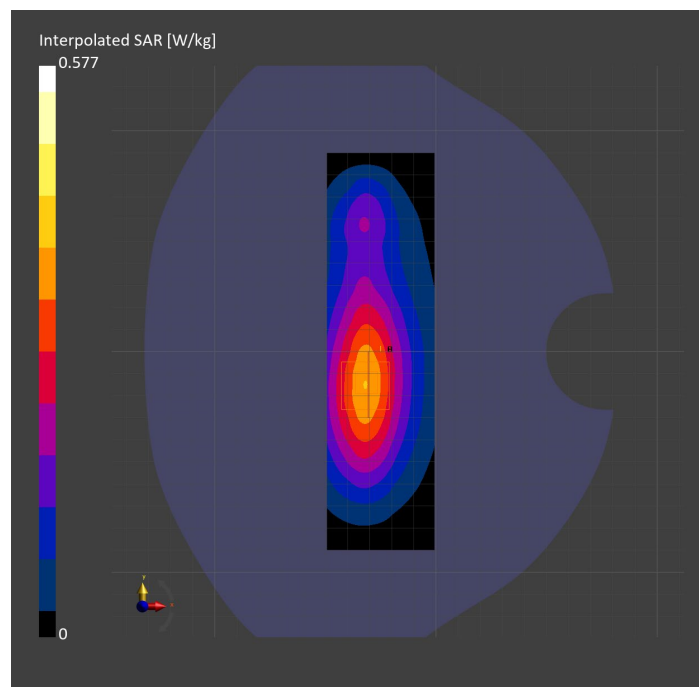
Probe Calibration Date	EX3DV4 - SN7806 2023-04-04	Phantom	Twin-SAM V8.0 (30deg probe tilt)
DAE Calibration Date	DAE4 Sn1784 2023-04-03	TSL Type	HBBL-600-10000
Software Version	16.2.4.2524		

Scan Setup

	Area Scan	Zoom Scan
Grid Extents [mm]	48.6 x 180.0	30.0 x 30.0 x 30.0
Grid Steps [mm]	8.1 x 15.0	6.0 x 6.0 x 1.5
Sensor Surface [mm]	3.0	1.4
Graded Grid	N/A	Yes
M2/M1 [%]		81.6
Dist 3dB Peak [mm]		16.4

Measurement Results

	Area Scan	Zoom Scan
psSAR1g [W/Kg]	0.332	0.334
psSAR10g [W/Kg]	0.216	0.214
Power Drift [dB]	N/A	-0.05



Measurement Report for GSM 850: GPRS-FDD (TDMA, GMSK, TN 0-1), CHEEK

Exposure Conditions

Band	GSM 850	TSL Permittivity	40.7
Frequency [MHz] Channel Number	836.600 190	TSL Conductivity [S/m]	0.871
Group UID	GSM 10024-DAC	Phantom Section TSL	RightHead HSL
Conversion Factor	7.83	Test Distance [mm]	0.00

Hardware Setup

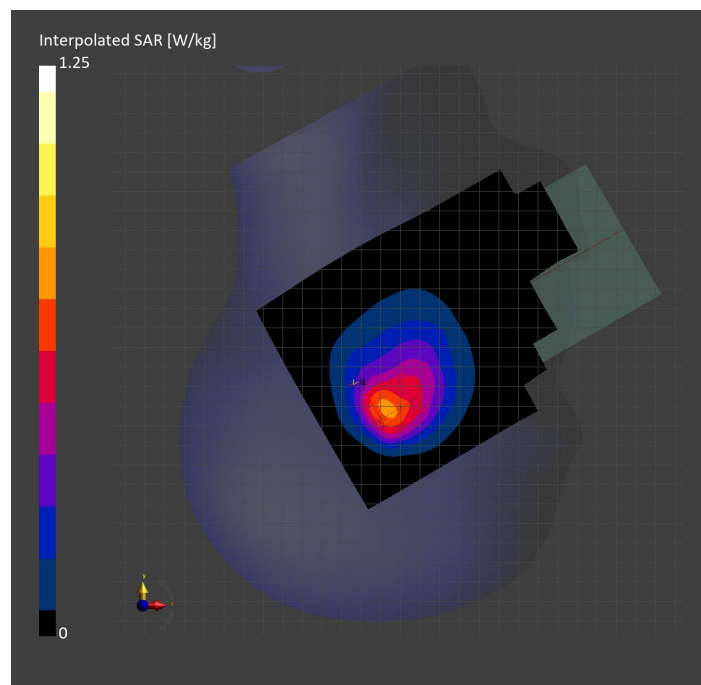
Probe Calibration Date	EX3DV4 - SN3749 2023-01-27	Phantom	Twin-SAM V8.0 (30deg probe tilt)
DAE Calibration Date	DAE4 Sn1357 2023-01-27	TSL Type	HBBL-600-10000
Software Version	16.2.4.2524		

Scan Setup

	Area Scan	Zoom Scan
Grid Extents [mm]	120.0 x 210.0	30.0 x 30.0 x 30.0
Grid Steps [mm]	15.0 x 15.0	6.0 x 6.0 x 1.5
Sensor Surface [mm]	3.0	1.4
Graded Grid	N/A	Yes
M2/M1 [%]		75.4
Dist 3dB Peak [mm]		7.3

Measurement Results

	Area Scan	Zoom Scan
psSAR1g [W/Kg]	0.645	0.631
psSAR10g [W/Kg]	0.410	0.405
Power Drift [dB]	N/A	-0.02



Measurement Report for PCS 1900: GPRS-FDD (TDMA, GMSK, TN 0-1), BACK

Exposure Conditions

Band	PCS 1900	TSL Permittivity	40.8
Frequency [MHz] Channel Number	1850.200 512	TSL Conductivity [S/m]	1.34
Group UID	GSM 10024-DAC	Phantom Section TSL	Flat HSL
Conversion Factor	8.43	Test Distance [mm]	5.00

Hardware Setup

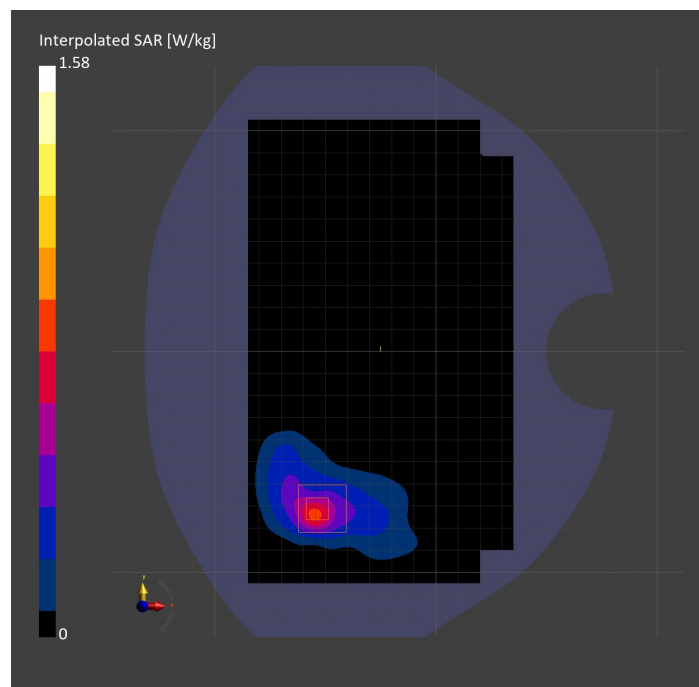
Probe Calibration Date	EX3DV4 - SN3991 2022-09-22	Phantom	Twin-SAM V8.0 (30deg probe tilt)
DAE Calibration Date	DAE4 Sn1674 2023-05-11	TSL Type	HBBL-600-10000
Software Version	16.2.4.2524		

Scan Setup

	Area Scan	Zoom Scan
Grid Extents [mm]	120.0 x 210.0	30.0 x 30.0 x 30.0
Grid Steps [mm]	15.0 x 15.0	6.0 x 6.0 x 1.5
Sensor Surface [mm]	3.0	1.4
Graded Grid	N/A	Yes
M2/M1 [%]		78.4
Dist 3dB Peak [mm]		7.0

Measurement Results

	Area Scan	Zoom Scan
psSAR1g [W/Kg]	0.614	0.703
psSAR10g [W/Kg]	0.304	0.316
Power Drift [dB]	N/A	0.05



Measurement Report for PCS 1900: GPRS-FDD (TDMA, GMSK, TN 0-1), CHEEK

Exposure Conditions

Band	PCS 1900	TSL Permittivity	40.3
Frequency [MHz] Channel Number	1880.000 661	TSL Conductivity [S/m]	1.42
Group UID	GSM 10024-DAC	Phantom Section TSL	LeftHead HSL
Conversion Factor	7.53	Test Distance [mm]	0.00

Hardware Setup

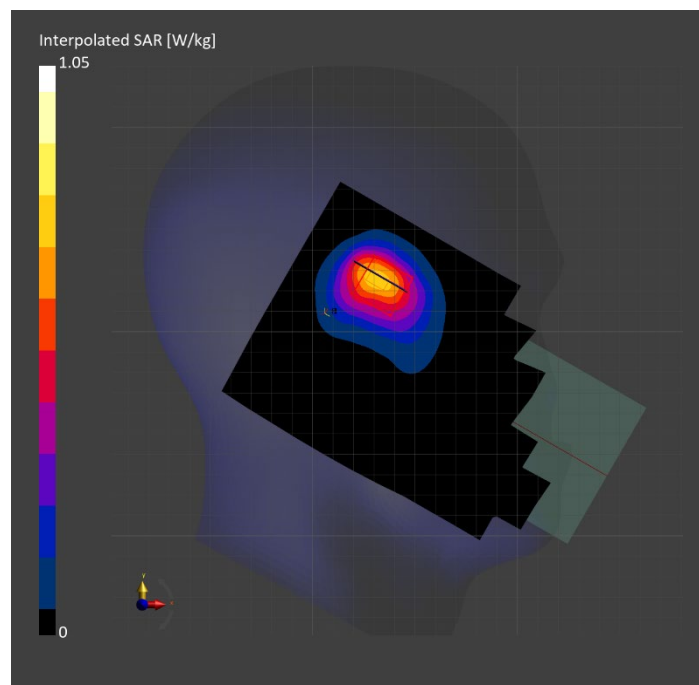
Probe Calibration Date	EX3DV4 - SN7807 2023-04-11	Phantom	Twin-SAM V8.0 (30deg probe tilt)
DAE Calibration Date	DAE4 Sn1799 2023-04-04	TSL Type	HBBL-600-10000
Software Version	16.2.4.2524		

Scan Setup

	Area Scan	Zoom Scan
Grid Extents [mm]	120.0 x 210.0	30.0 x 30.0 x 30.0
Grid Steps [mm]	15.0 x 15.0	6.0 x 6.0 x 1.5
Sensor Surface [mm]	3.0	1.4
Graded Grid	N/A	Yes
M2/M1 [%]		86.5
Dist 3dB Peak [mm]		10.3

Measurement Results

	Area Scan	Zoom Scan
psSAR1g [W/Kg]	0.597	0.596
psSAR10g [W/Kg]	0.334	0.330
Power Drift [dB]	N/A	-0.02



Measurement Report for PCS 1900: GPRS-FDD (TDMA, GMSK, TN 0-1), EDGE RIGHT

Exposure Conditions

Band	PCS 1900	TSL Permittivity	38.2
Frequency [MHz] Channel Number	1880.000 661	TSL Conductivity [S/m]	1.39
Group UID	GSM 10024-DAC	Phantom Section TSL	Flat HSL
Conversion Factor	7.53	Test Distance [mm]	5.00

Hardware Setup

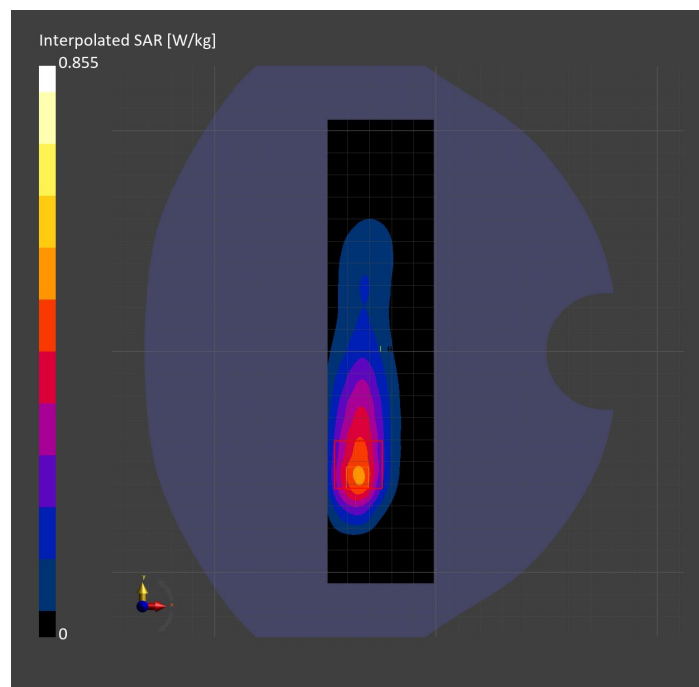
Probe Calibration Date	EX3DV4 - SN7807 2023-04-11	Phantom	Twin-SAM V8.0 (30deg probe tilt)
DAE Calibration Date	DAE4 Sn1799 2023-04-04	TSL Type	HBBL-600-10000
Software Version	16.2.4.2524		

Scan Setup

	Area Scan	Zoom Scan
Grid Extents [mm]	48.0 x 210.0	30.0 x 30.0 x 30.0
Grid Steps [mm]	8.0 x 15.0	6.0 x 6.0 x 1.5
Sensor Surface [mm]	3.0	1.4
Graded Grid	N/A	Yes
M2/M1 [%]		75.7
Dist 3dB Peak [mm]		8.5

Measurement Results

	Area Scan	Zoom Scan
psSAR1g [W/Kg]	0.413	0.409
psSAR10g [W/Kg]	0.216	0.210
Power Drift [dB]	N/A	0.01



Measurement Report for Band 2: UMTS-FDD (WCDMA), CHEEK

Exposure Conditions

Band	Band 2	TSL Permittivity	38.1
Frequency [MHz] Channel Number	1907.600 9538	TSL Conductivity [S/m]	1.41
Group UID	WCDMA 10011-CAC	Phantom Section TSL	LeftHead HSL
Conversion Factor	7.53	Test Distance [mm]	0.00

Hardware Setup

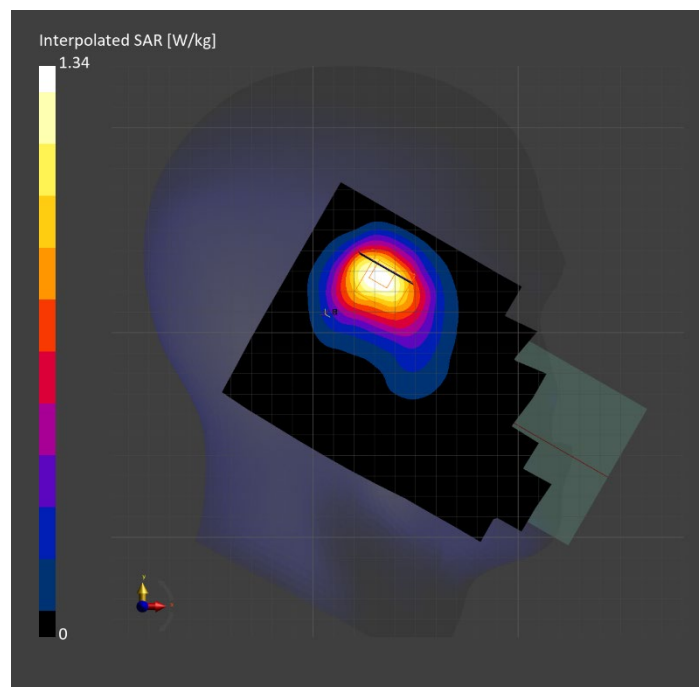
Probe Calibration Date	EX3DV4 - SN7807 2023-04-11	Phantom	Twin-SAM V8.0 (30deg probe tilt)
DAE Calibration Date	DAE4 Sn1799 2023-04-04	TSL Type	HBBL-600-10000
Software Version	16.2.4.2524		

Scan Setup

	Area Scan	Zoom Scan
Grid Extents [mm]	120.0 x 210.0	30.0 x 30.0 x 30.0
Grid Steps [mm]	15.0 x 15.0	6.0 x 6.0 x 1.5
Sensor Surface [mm]	3.0	1.4
Graded Grid	N/A	Yes
M2/M1 [%]		79.2
Dist 3dB Peak [mm]		8.8

Measurement Results

	Area Scan	Zoom Scan
psSAR1g [W/Kg]	0.707	0.732
psSAR10g [W/Kg]	0.402	0.411
Power Drift [dB]	N/A	0.01



Measurement Report for Band 2: UMTS-FDD (WCDMA), BACK

Exposure Conditions

Band	Band 2	TSL Permittivity	38.2
Frequency [MHz] Channel Number	1880.000 9400	TSL Conductivity [S/m]	1.39
Group UID	WCDMA 10011-CAC	Phantom Section TSL	Flat HSL
Conversion Factor	7.53	Test Distance [mm]	5.00

Hardware Setup

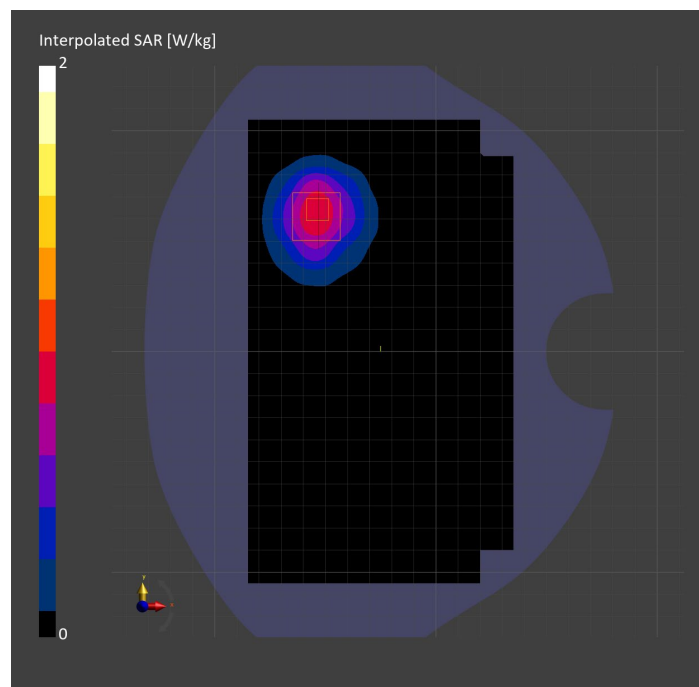
Probe Calibration Date	EX3DV4 - SN7807 2023-04-11	Phantom	Twin-SAM V8.0 (30deg probe tilt)
DAE Calibration Date	DAE4 Sn1799 2023-04-04	TSL Type	HBBL-600-10000
Software Version	16.2.4.2524		

Scan Setup

	Area Scan	Zoom Scan
Grid Extents [mm]	120.0 x 210.0	30.0 x 30.0 x 30.0
Grid Steps [mm]	15.0 x 15.0	6.0 x 6.0 x 1.5
Sensor Surface [mm]	3.0	1.4
Graded Grid	N/A	Yes
M2/M1 [%]		69.7
Dist 3dB Peak [mm]		9.4

Measurement Results

	Area Scan	Zoom Scan
psSAR1g [W/Kg]	0.831	0.878
psSAR10g [W/Kg]	0.467	0.471
Power Drift [dB]	N/A	0.00



Measurement Report for Band 2: UMTS-FDD (WCDMA), EDGE RIGHT

Exposure Conditions

Band	Band 2	TSL Permittivity	38.2
Frequency [MHz] Channel Number	1880.000 9400	TSL Conductivity [S/m]	1.39
Group UID	WCDMA 10011-CAC	Phantom Section TSL	Flat HSL
Conversion Factor	7.53	Test Distance [mm]	5.00

Hardware Setup

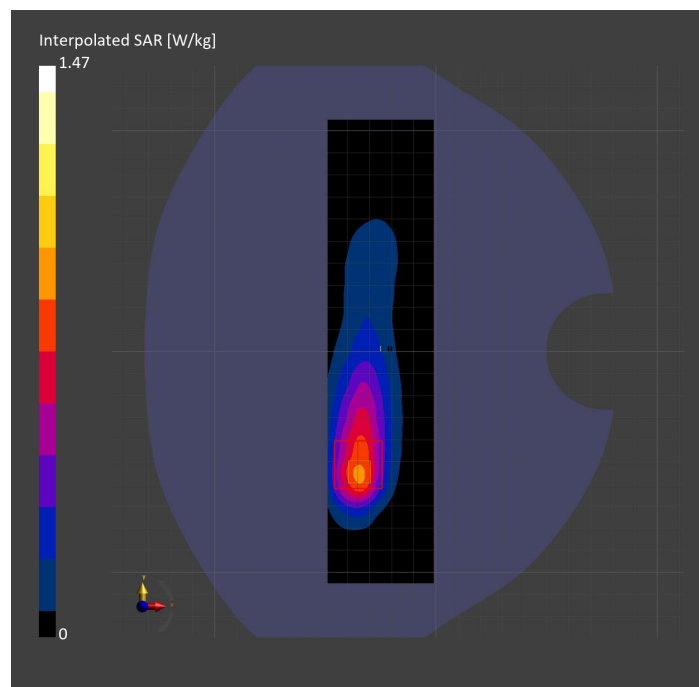
Probe Calibration Date	EX3DV4 - SN7807 2023-04-11	Phantom	Twin-SAM V8.0 (30deg probe tilt)
DAE Calibration Date	DAE4 Sn1799 2023-04-04	TSL Type	HBBL-600-10000
Software Version	16.2.4.2524		

Scan Setup

	Area Scan	Zoom Scan
Grid Extents [mm]	48.0 x 210.0	30.0 x 30.0 x 30.0
Grid Steps [mm]	8.0 x 15.0	6.0 x 6.0 x 1.5
Sensor Surface [mm]	3.0	1.4
Graded Grid	N/A	Yes
M2/M1 [%]		79.1
Dist 3dB Peak [mm]		9.2

Measurement Results

	Area Scan	Zoom Scan
psSAR1g [W/Kg]	0.708	0.697
psSAR10g [W/Kg]	0.368	0.356
Power Drift [dB]	N/A	0.00



Measurement Report for Band 4: UMTS-FDD (WCDMA), EDGE BOTTOM

Exposure Conditions

Band	Band 4	TSL Permittivity	40.1
Frequency [MHz] Channel Number	1712.400 1312	TSL Conductivity [S/m]	1.29
Group UID	WCDMA 10011-CAC	Phantom Section TSL	Flat HSL
Conversion Factor	8.98	Test Distance [mm]	5.00

Hardware Setup

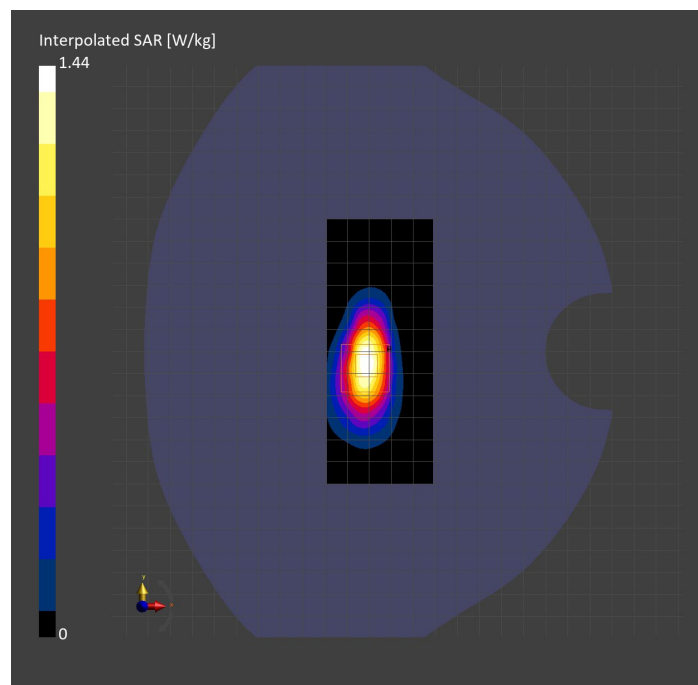
Probe Calibration Date	EX3DV4 - SN3989 2023-01-26	Phantom	Twin-SAM V8.0 (30deg probe tilt)
DAE Calibration Date	DAE4 Sn1257 2022-09-20	TSL Type	HBBL-600-10000
Software Version	16.2.4.2524		

Scan Setup

	Area Scan	Zoom Scan
Grid Extents [mm]	48.0 x 120.0	30.0 x 30.0 x 30.0
Grid Steps [mm]	8.0 x 15.0	6.0 x 6.0 x 1.5
Sensor Surface [mm]	3.0	1.4
Graded Grid	N/A	Yes
M2/M1 [%]		81.4
Dist 3dB Peak [mm]		8.4

Measurement Results

	Area Scan	Zoom Scan
psSAR1g [W/Kg]	0.753	0.751
psSAR10g [W/Kg]	0.375	0.371
Power Drift [dB]	N/A	-0.00



Measurement Report for Band 4: UMTS-FDD (WCDMA), BACK

Exposure Conditions

Band	Band 4	TSL Permittivity	40.0
Frequency [MHz] Channel Number	1752.600 1513	TSL Conductivity [S/m]	1.32
Group UID	WCDMA 10011-CAC	Phantom Section TSL	Flat HSL
Conversion Factor	8.98	Test Distance [mm]	5.00

Hardware Setup

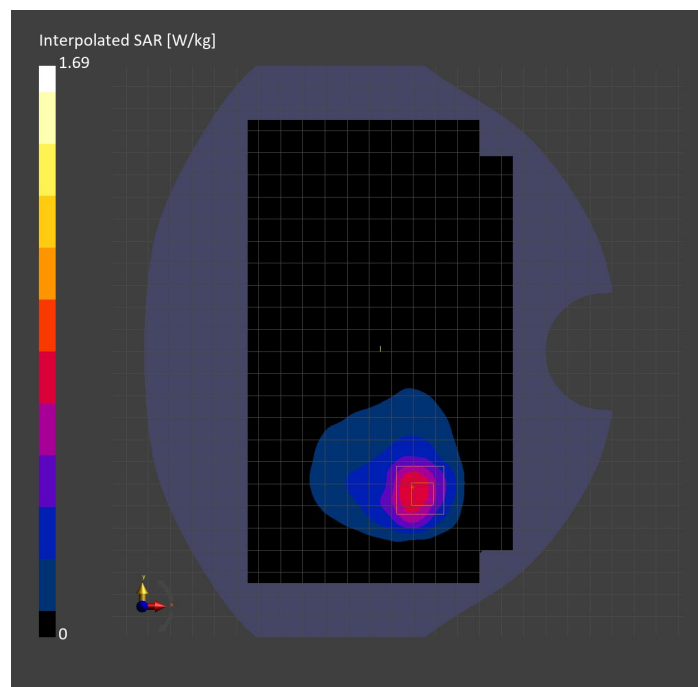
Probe Calibration Date	EX3DV4 - SN3989 2023-01-26	Phantom	Twin-SAM V8.0 (30deg probe tilt)
DAE Calibration Date	DAE4 Sn1257 2022-09-20	TSL Type	HBBL-600-10000
Software Version	16.2.4.2524		

Scan Setup

	Area Scan	Zoom Scan
Grid Extents [mm]	120.0 x 210.0	30.0 x 30.0 x 30.0
Grid Steps [mm]	15.0 x 15.0	6.0 x 6.0 x 1.5
Sensor Surface [mm]	3.0	1.4
Graded Grid	N/A	Yes
M2/M1 [%]		81.3
Dist 3dB Peak [mm]		9.7

Measurement Results

	Area Scan	Zoom Scan
psSAR1g [W/Kg]	0.700	0.809
psSAR10g [W/Kg]	0.385	0.394
Power Drift [dB]	N/A	0.03



Measurement Report for Band 4: UMTS-FDD (WCDMA), CHEEK

Exposure Conditions

Band	Band 4	TSL Permittivity	41.7
Frequency [MHz] Channel Number	1732.600 1413	TSL Conductivity [S/m]	1.32
Group UID	WCDMA 10011-CAC	Phantom Section TSL	LeftHead HSL
Conversion Factor	8.66	Test Distance [mm]	0.00

Hardware Setup

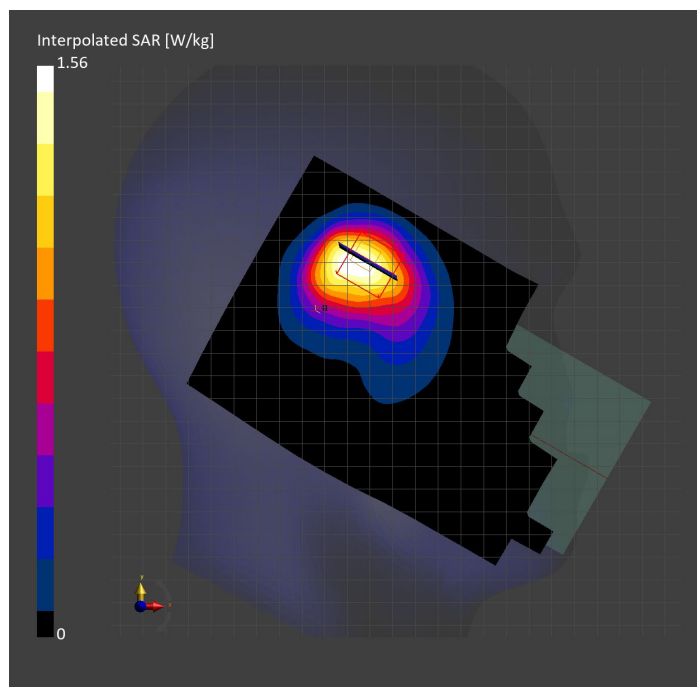
Probe Calibration Date	EX3DV4 - SN7569 2023-04-18	Phantom	Twin-SAM V8.0 (30deg probe tilt)
DAE Calibration Date	DAE4 Sn1547 2023-04-18	TSL Type	HBBL-600-10000
Software Version	16.2.4.2524		

Scan Setup

	Area Scan	Zoom Scan
Grid Extents [mm]	120.0 x 210.0	30.0 x 30.0 x 30.0
Grid Steps [mm]	15.0 x 15.0	6.0 x 6.0 x 1.5
Sensor Surface [mm]	3.0	1.4
Graded Grid	N/A	Yes
M2/M1 [%]		74.7
Dist 3dB Peak [mm]		8.5

Measurement Results

	Area Scan	Zoom Scan
psSAR1g [W/Kg]	0.745	0.769
psSAR10g [W/Kg]	0.440	0.435
Power Drift [dB]	N/A	0.01



Measurement Report for Band 5: UMTS-FDD (WCDMA), BACK

Exposure Conditions

Band	Band 5	TSL Permittivity	41.4
Frequency [MHz] Channel Number	836.600 4183	TSL Conductivity [S/m]	0.874
Group UID	WCDMA 10011-CAC	Phantom Section TSL	Flat HSL
Conversion Factor	8.76	Test Distance [mm]	5.00

Hardware Setup

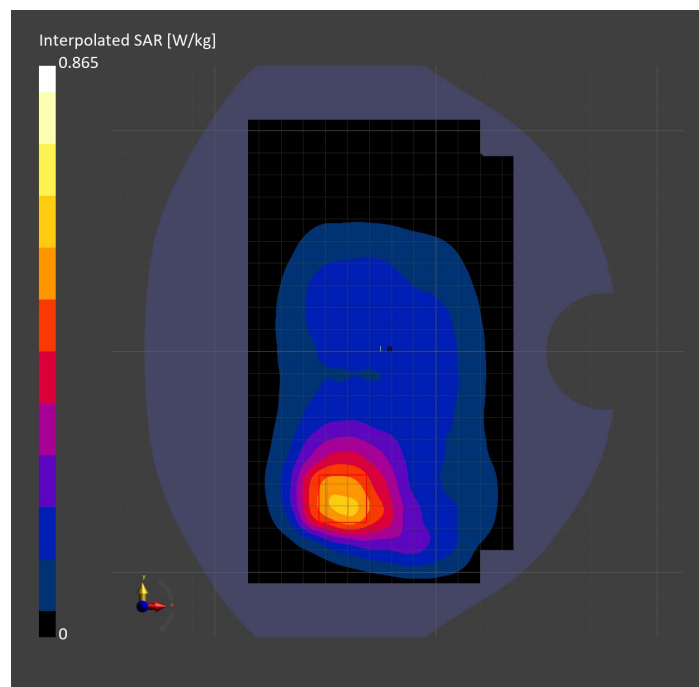
Probe Calibration Date	EX3DV4 - SN7806 2023-04-04	Phantom	Twin-SAM V8.0 (30deg probe tilt)
DAE Calibration Date	DAE4 Sn1784 2023-04-03	TSL Type	HBBL-600-10000
Software Version	16.2.4.2524		

Scan Setup

	Area Scan	Zoom Scan
Grid Extents [mm]	120.0 x 210.0	30.0 x 30.0 x 30.0
Grid Steps [mm]	15.0 x 15.0	6.0 x 6.0 x 1.5
Sensor Surface [mm]	3.0	1.4
Graded Grid	N/A	Yes
M2/M1 [%]		83.2
Dist 3dB Peak [mm]		13.0

Measurement Results

	Area Scan	Zoom Scan
psSAR1g [W/Kg]	0.528	0.542
psSAR10g [W/Kg]	0.349	0.359
Power Drift [dB]	N/A	-0.03



Measurement Report for Band 5: UMTS-FDD (WCDMA), CHEEK

Exposure Conditions

Band	Band 5	TSL Permittivity	40.6
Frequency [MHz] Channel Number	826.400 4132	TSL Conductivity [S/m]	0.920
Group UID	WCDMA 10011-CAC	Phantom Section TSL	RightHead HSL
Conversion Factor	7.83	Test Distance [mm]	0.00

Hardware Setup

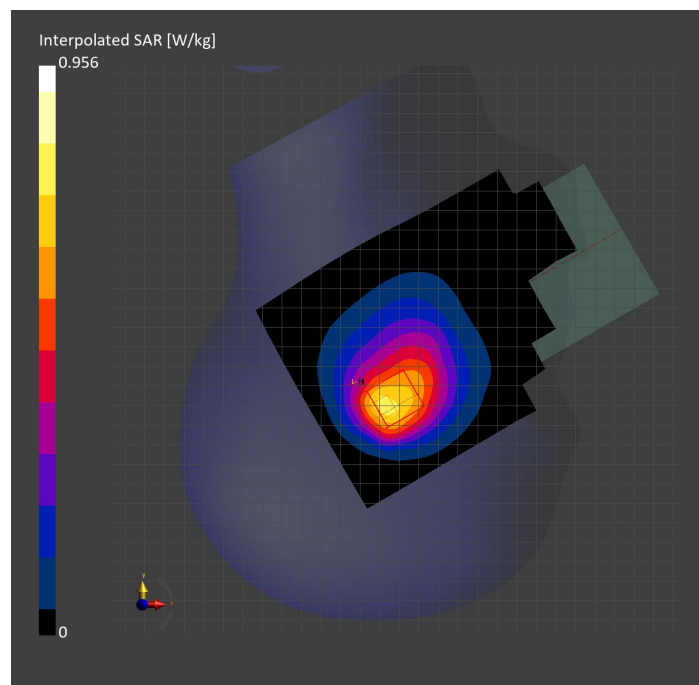
Probe Calibration Date	EX3DV4 - SN3749 2023-01-27	Phantom	Twin-SAM V8.0 (30deg probe tilt)
DAE Calibration Date	DAE4 Sn1357 2023-01-27	TSL Type	HBBL-600-10000
Software Version	16.2.4.2524		

Scan Setup

	Area Scan	Zoom Scan
Grid Extents [mm]	120.0 x 210.0	30.0 x 30.0 x 30.0
Grid Steps [mm]	15.0 x 15.0	6.0 x 6.0 x 1.5
Sensor Surface [mm]	3.0	1.4
Graded Grid	N/A	Yes
M2/M1 [%]		86.9
Dist 3dB Peak [mm]		13.0

Measurement Results

	Area Scan	Zoom Scan
psSAR1g [W/Kg]	0.642	0.631
psSAR10g [W/Kg]	0.420	0.429
Power Drift [dB]	N/A	0.05



Measurement Report for Band 5: UMTS-FDD (WCDMA), EDGE LEFT

Exposure Conditions

Band	Band 5	TSL Permittivity	40.6
Frequency [MHz] Channel Number	836.600 4183	TSL Conductivity [S/m]	0.868
Group UID	WCDMA 10011-CAC	Phantom Section TSL	Flat HSL
Conversion Factor	7.83	Test Distance [mm]	5.00

Hardware Setup

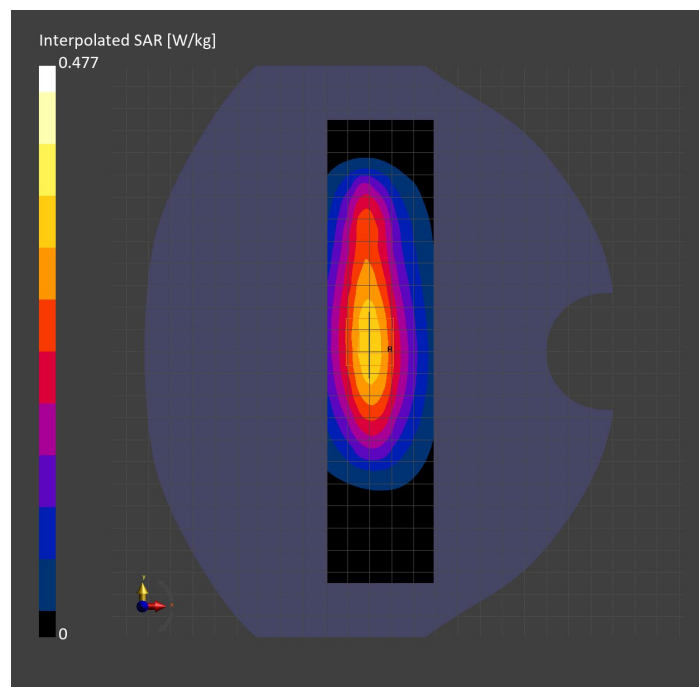
Probe Calibration Date	EX3DV4 - SN3749 2023-01-27	Phantom	Twin-SAM V8.0 (30deg probe tilt)
DAE Calibration Date	DAE4 Sn1357 2023-01-27	TSL Type	HBBL-600-10000
Software Version	16.2.4.2524		

Scan Setup

	Area Scan	Zoom Scan
Grid Extents [mm]	48.0 x 210.0	30.0 x 30.0 x 30.0
Grid Steps [mm]	8.0 x 15.0	6.0 x 6.0 x 1.5
Sensor Surface [mm]	3.0	1.4
Graded Grid	N/A	Yes
M2/M1 [%]		86.3
Dist 3dB Peak [mm]		14.4

Measurement Results

	Area Scan	Zoom Scan
psSAR1g [W/Kg]	0.301	0.299
psSAR10g [W/Kg]	0.195	0.191
Power Drift [dB]	N/A	-0.11



Measurement Report for Band 5: LTE-FDD (SC-FDMA, 1 RB, 10 MHz, QPSK) RBPosition:Mid AntennaCfg:SISO, CHEEK

Exposure Conditions

Band	Band 5	TSL Permittivity	40.7
Frequency [MHz] Channel Number	836.500 20525	TSL Conductivity [S/m]	0.868
Group UID	LTE-FDD 10175-CAH	Phantom Section TSL	RightHead HSL
Conversion Factor	7.83	Test Distance [mm]	0.00

Hardware Setup

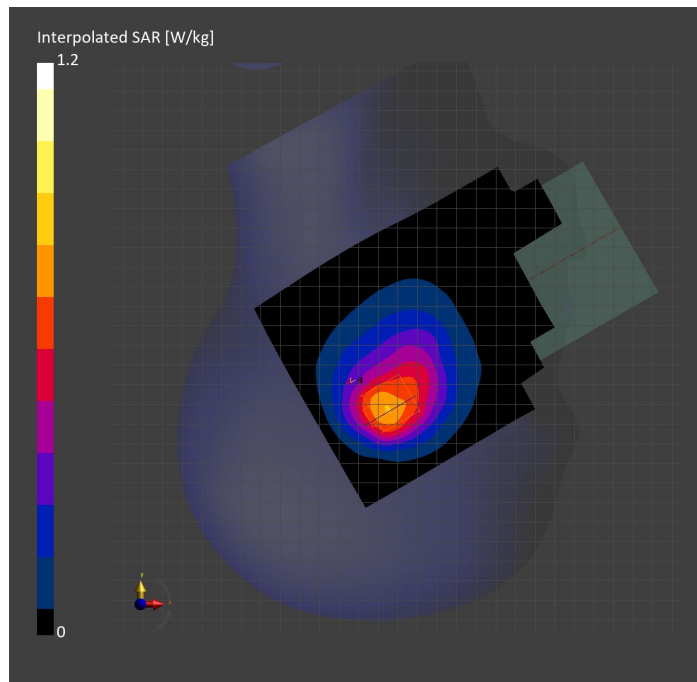
Probe Calibration Date	EX3DV4 - SN3749 2023-01-27	Phantom	Twin-SAM V8.0 (30deg probe tilt)
DAE Calibration Date	DAE4 Sn1357 2023-01-27	TSL Type	HBBL-600-10000
Software Version	16.2.4.2524		

Scan Setup

	Area Scan	Zoom Scan
Grid Extents [mm]	120.0 x 210.0	30.0 x 30.0 x 30.0
Grid Steps [mm]	15.0 x 15.0	6.0 x 6.0 x 1.5
Sensor Surface [mm]	3.0	1.4
Graded Grid	N/A	Yes
M2/M1 [%]		83.1
Dist 3dB Peak [mm]		11.4

Measurement Results

	Area Scan	Zoom Scan
psSAR1g [W/Kg]	0.683	0.691
psSAR10g [W/Kg]	0.445	0.457
Power Drift [dB]	N/A	-0.06



Measurement Report for Band 5: LTE-FDD (SC-FDMA, 1 RB, 10 MHz, QPSK) RBPosition:Mid AntennaCfg:SISO, BACK

Exposure Conditions

Band	Band 5	TSL Permittivity	41.4
Frequency [MHz] Channel Number	836.500 20525	TSL Conductivity [S/m]	0.874
Group UID	LTE-FDD 10175-CAH	Phantom Section TSL	Flat HSL
Conversion Factor	8.76	Test Distance [mm]	5.00

Hardware Setup

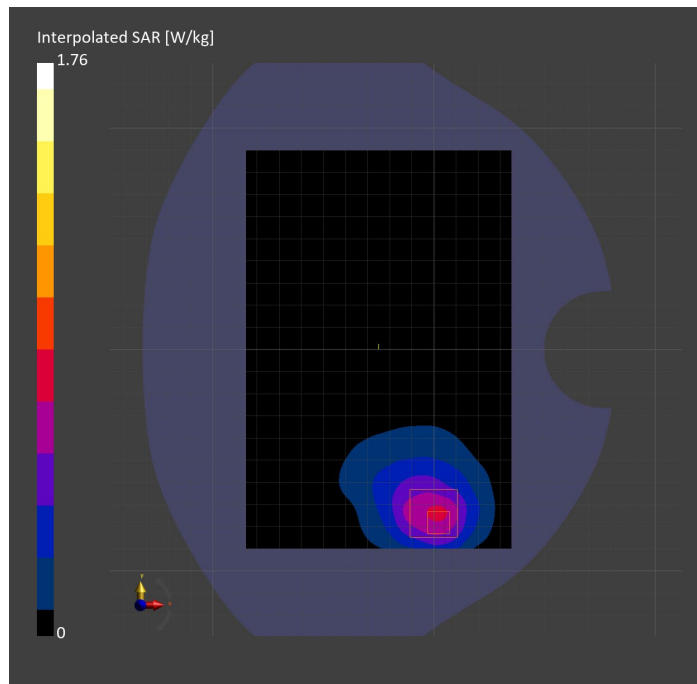
Probe Calibration Date	EX3DV4 - SN7806 2023-04-04	Phantom	Twin-SAM V8.0 (30deg probe tilt)
DAE Calibration Date	DAE4 Sn1784 2023-04-03	TSL Type	HBBL-600-10000
Software Version	16.2.4.2524		

Scan Setup

	Area Scan	Zoom Scan
Grid Extents [mm]	120.0 x 180.0	30.0 x 30.0 x 30.0
Grid Steps [mm]	15.0 x 15.0	6.0 x 6.0 x 1.5
Sensor Surface [mm]	3.0	1.4
Graded Grid	N/A	Yes
M2/M1 [%]		65.9
Dist 3dB Peak [mm]		7.6

Measurement Results

	Area Scan	Zoom Scan
psSAR1g [W/Kg]	0.650	0.689
psSAR10g [W/Kg]	0.409	0.380
Power Drift [dB]	N/A	-0.04



Measurement Report for Band 5: LTE-FDD (SC-FDMA, 1 RB, 10 MHz, QPSK) RBPosition:Mid AntennaCfg:SISO, EDGE BOTTOM

Exposure Conditions

Band	Band 5	TSL Permittivity	41.4
Frequency [MHz] Channel Number	836.500 20525	TSL Conductivity [S/m]	0.874
Group UID	LTE-FDD 10175-CAH	Phantom Section TSL	Flat HSL
Conversion Factor	8.76	Test Distance [mm]	5.00

Hardware Setup

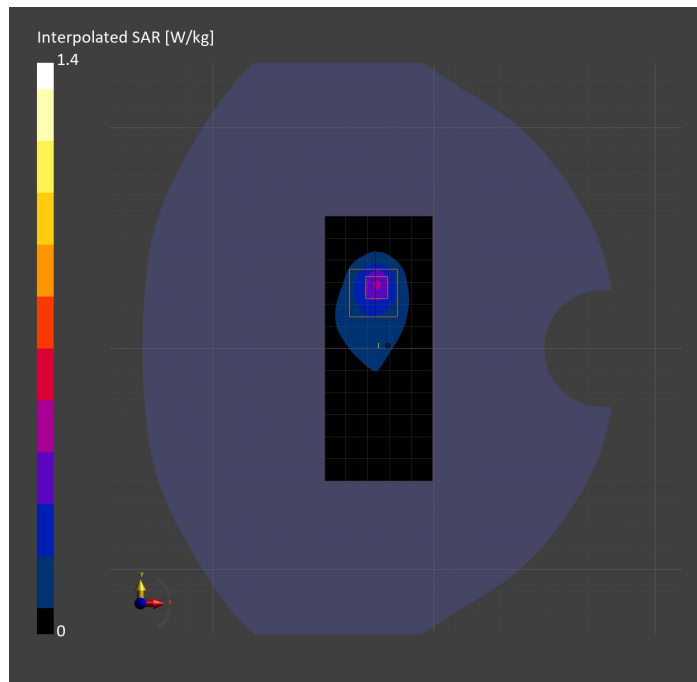
Probe Calibration Date	EX3DV4 - SN7806 2023-04-04	Phantom	Twin-SAM V8.0 (30deg probe tilt)
DAE Calibration Date	DAE4 Sn1784 2023-04-03	TSL Type	HBBL-600-10000
Software Version	16.2.4.2524		

Scan Setup

	Area Scan	Zoom Scan
Grid Extents [mm]	48.6 x 120.0	30.0 x 30.0 x 30.0
Grid Steps [mm]	8.1 x 15.0	6.0 x 6.0 x 1.5
Sensor Surface [mm]	3.0	1.4
Graded Grid	N/A	Yes
M2/M1 [%]		57.0
Dist 3dB Peak [mm]		7.3

Measurement Results

	Area Scan	Zoom Scan
psSAR1g [W/Kg]	0.358	0.388
psSAR10g [W/Kg]	0.186	0.160
Power Drift [dB]	N/A	0.04



Measurement Report for Band 7: LTE-FDD (SC-FDMA, 50% RB, 20 MHz, QPSK) RBPosition:Mid AntennaCfg:SISO, EDGE RIGHT

Exposure Conditions

Band	Band 7	TSL Permittivity	40.3
Frequency [MHz] Channel Number	2510.000 20850	TSL Conductivity [S/m]	1.82
Group UID	LTE-FDD 10297-AAE	Phantom Section TSL	Flat HSL
Conversion Factor	7.33	Test Distance [mm]	5.00

Hardware Setup

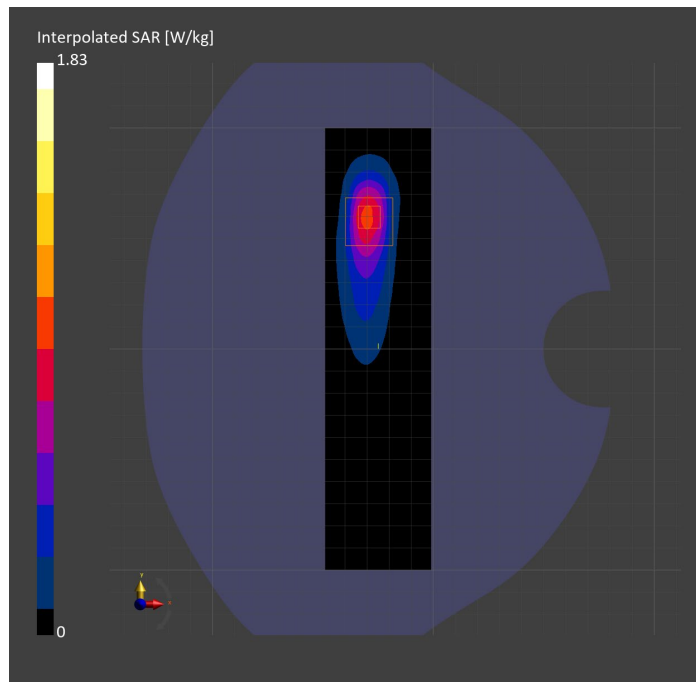
Probe Calibration Date	EX3DV4 - SN7808 2023-04-18	Phantom	Twin-SAM V8.0 (30deg probe tilt)
DAE Calibration Date	DAE4 Sn1796 2023-04-03	TSL Type	HBBL-600-10000
Software Version	16.2.4.2524		

Scan Setup

	Area Scan	Zoom Scan
Grid Extents [mm]	48.0 x 200.0	30.0 x 30.0 x 30.0
Grid Steps [mm]	8.0 x 10.0	5.0 x 5.0 x 1.5
Sensor Surface [mm]	3.0	1.4
Graded Grid	N/A	Yes
M2/M1 [%]		74.5
Dist 3dB Peak [mm]		7.0

Measurement Results

	Area Scan	Zoom Scan
psSAR1g [W/Kg]	0.739	0.770
psSAR10g [W/Kg]	0.327	0.331
Power Drift [dB]	N/A	-0.01



Measurement Report for Band 7: LTE-FDD (SC-FDMA, 50% RB, 20 MHz, QPSK) RBPosition:Mid AntennaCfg:SISO, BACK

Exposure Conditions

Band	Band 7	TSL Permittivity	37.4
Frequency [MHz] Channel Number	2560.000 21350	TSL Conductivity [S/m]	1.89
Group UID	LTE-FDD 10297-AAE	Phantom Section TSL	Flat HSL
Conversion Factor	7.32	Test Distance [mm]	5.00

Hardware Setup

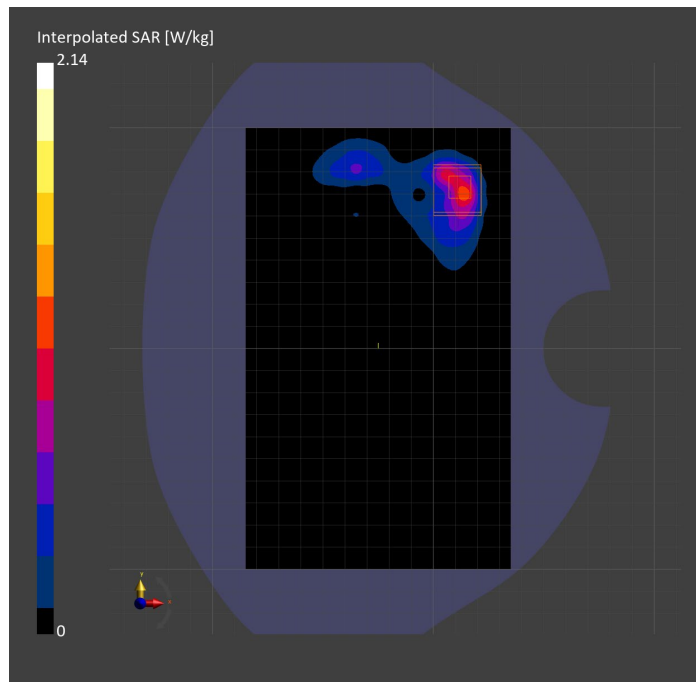
Probe Calibration Date	EX3DV4 - SN3885 2022-09-20	Phantom	Twin-SAM V5.0 (30deg probe tilt)
DAE Calibration Date	DAE4 Sn1548 2023-02-14	TSL Type	HBBL-600-10000
Software Version	16.2.4.2524		

Scan Setup

	Area Scan	Zoom Scan
Grid Extents [mm]	120.0 x 200.0	30.0 x 30.0 x 30.0
Grid Steps [mm]	10.0 x 10.0	5.0 x 5.0 x 1.5
Sensor Surface [mm]	3.0	1.4
Graded Grid	N/A	Yes
M2/M1 [%]		77.9
Dist 3dB Peak [mm]		5.9

Measurement Results

	Area Scan	Zoom Scan
psSAR1g [W/Kg]	0.822	0.884
psSAR10g [W/Kg]	0.363	0.339
Power Drift [dB]	N/A	-0.01



Measurement Report for Band 7: LTE-FDD (SC-FDMA, 1 RB, 20 MHz, QPSK) RBPosition:Mid AntennaCfg:SISO, CHEEK

Exposure Conditions

Band	Band 7	TSL Permittivity	38.0
Frequency [MHz] Channel Number	2560.000 21350	TSL Conductivity [S/m]	1.93
Group UID	LTE-FDD 10169-CAF	Phantom Section TSL	LeftHead HSL
Conversion Factor	7.32	Test Distance [mm]	0.00

Hardware Setup

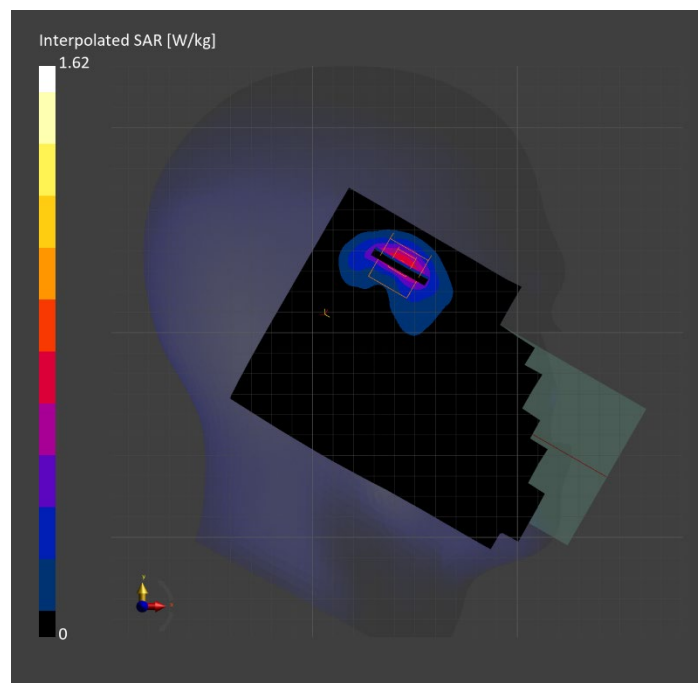
Probe Calibration Date	EX3DV4 - SN3885 2022-09-20	Phantom	Twin-SAM V5.0 (30deg probe tilt)
DAE Calibration Date	DAE4 Sn1548 2023-02-14	TSL Type	HBBL-600-10000
Software Version	16.2.4.2524		

Scan Setup

	Area Scan	Zoom Scan
Grid Extents [mm]	120.0 x 200.0	30.0 x 30.0 x 30.0
Grid Steps [mm]	10.0 x 10.0	5.0 x 5.0 x 1.5
Sensor Surface [mm]	3.0	1.4
Graded Grid	N/A	Yes
M2/M1 [%]		73.0
Dist 3dB Peak [mm]		6.1

Measurement Results

	Area Scan	Zoom Scan
psSAR1g [W/Kg]	0.588	0.686
psSAR10g [W/Kg]	0.260	0.284
Power Drift [dB]	N/A	0.02



Measurement Report for Band 12: LTE-FDD (SC-FDMA, 1 RB, 10 MHz, QPSK) RBPosition:Mid AntennaCfg:SISO, EDGE RIGHT

Exposure Conditions

Band	Band 12	TSL Permittivity	42.1
Frequency [MHz] Channel Number	707.500 23095	TSL Conductivity [S/m]	0.863
Group UID	LTE-FDD 10175-CAH	Phantom Section TSL	Flat HSL
Conversion Factor	10.62	Test Distance [mm]	5.00

Hardware Setup

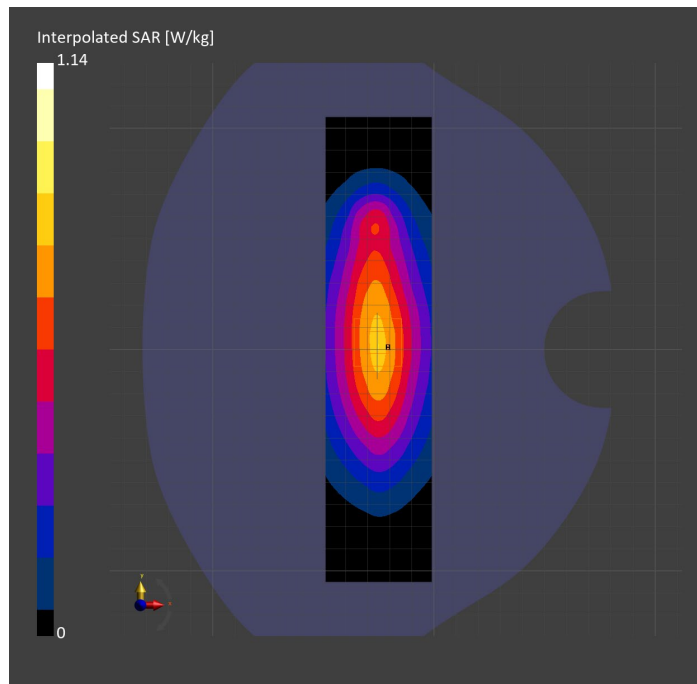
Probe Calibration Date	EX3DV4 - SN7589 2023-04-18	Phantom	Twin-SAM V5.0 (30deg probe tilt)
DAE Calibration Date	DAE4 Sn1544 2023-01-24	TSL Type	HBBL-600-10000
Software Version	16.2.4.2524		

Scan Setup

	Area Scan	Zoom Scan
Grid Extents [mm]	48.0 x 210.0	30.0 x 30.0 x 30.0
Grid Steps [mm]	8.0 x 15.0	6.0 x 6.0 x 1.5
Sensor Surface [mm]	3.0	1.4
Graded Grid	N/A	Yes
M2/M1 [%]		83.1
Dist 3dB Peak [mm]		> 15.0

Measurement Results

	Area Scan	Zoom Scan
psSAR1g [W/Kg]	0.690	0.700
psSAR10g [W/Kg]	0.463	0.471
Power Drift [dB]	N/A	0.02



Measurement Report for Band 12: LTE-FDD (SC-FDMA, 1 RB, 10 MHz, QPSK) RBPosition:Mid AntennaCfg:SISO, CHEEK

Exposure Conditions

Band	Band 12	TSL Permittivity	41.0
Frequency [MHz] Channel Number	707.500 23095	TSL Conductivity [S/m]	0.860
Group UID	LTE-FDD 10175-CAH	Phantom Section TSL	RightHead HSL
Conversion Factor	8.93	Test Distance [mm]	0.00

Hardware Setup

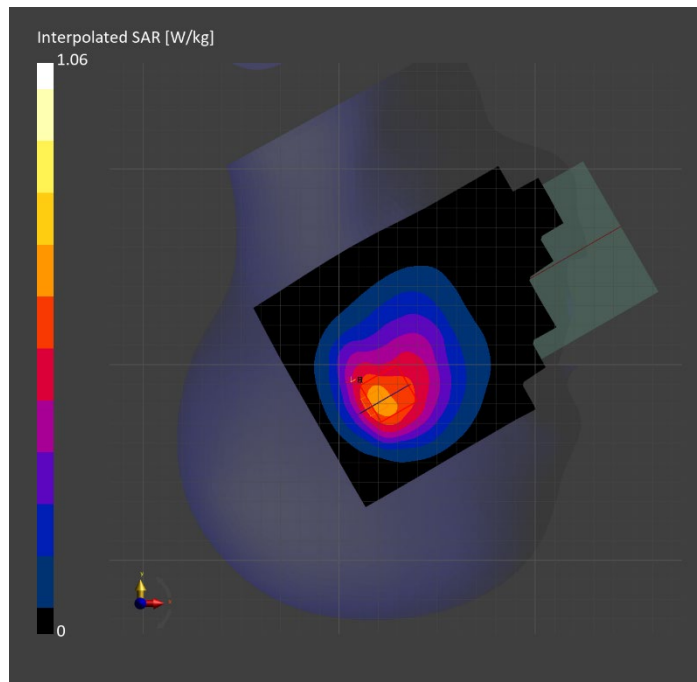
Probe Calibration Date	EX3DV4 - SN7448 2023-02-14	Phantom	Twin-SAM V5.0 (30deg probe tilt)
DAE Calibration Date	DAE4 Sn1472 2023-01-23	TSL Type	HBBL-600-10000
Software Version	16.2.4.2524		

Scan Setup

	Area Scan	Zoom Scan
Grid Extents [mm]	120.0 x 210.0	30.0 x 30.0 x 30.0
Grid Steps [mm]	15.0 x 15.0	6.0 x 6.0 x 1.5
Sensor Surface [mm]	3.0	1.4
Graded Grid	N/A	Yes
M2/M1 [%]		78.5
Dist 3dB Peak [mm]		11.1

Measurement Results

	Area Scan	Zoom Scan
psSAR1g [W/Kg]	0.583	0.563
psSAR10g [W/Kg]	0.387	0.375
Power Drift [dB]	N/A	-0.05



Measurement Report for Band 12: LTE-FDD (SC-FDMA, 1 RB, 10 MHz, QPSK) RBPosition:Mid AntennaCfg:SISO, BACK

Exposure Conditions

Band	Band 12	TSL Permittivity	41.6
Frequency [MHz] Channel Number	707.500 23095	TSL Conductivity [S/m]	0.897
Group UID	LTE-FDD 10175-CAH	Phantom Section TSL	Flat HSL
Conversion Factor	8.93	Test Distance [mm]	5.00

Hardware Setup

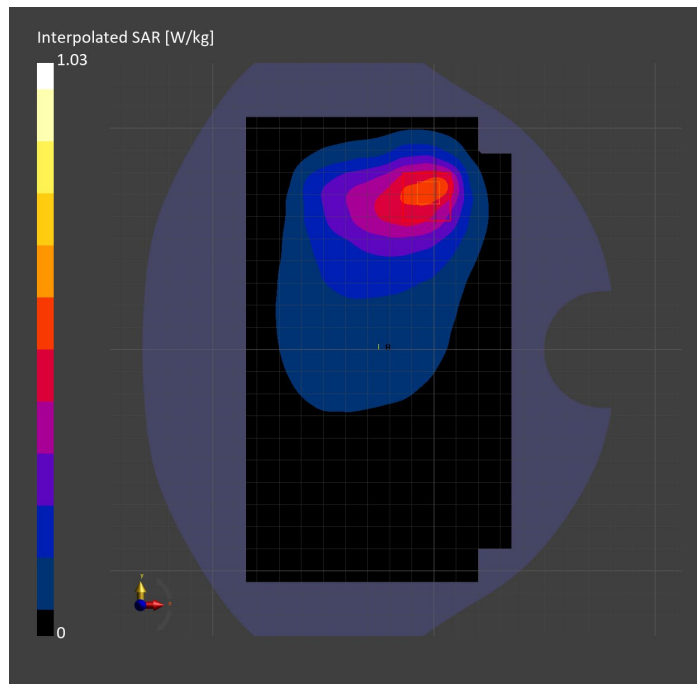
Probe Calibration Date	EX3DV4 - SN7448 2023-02-14	Phantom	Twin-SAM V5.0 (30deg probe tilt)
DAE Calibration Date	DAE4 Sn1472 2023-01-23	TSL Type	HBBL-600-10000
Software Version	16.2.4.2524		

Scan Setup

	Area Scan	Zoom Scan
Grid Extents [mm]	120.0 x 210.0	30.0 x 30.0 x 30.0
Grid Steps [mm]	15.0 x 15.0	6.0 x 6.0 x 1.5
Sensor Surface [mm]	3.0	1.4
Graded Grid	N/A	Yes
M2/M1 [%]		73.5
Dist 3dB Peak [mm]		10.3

Measurement Results

	Area Scan	Zoom Scan
psSAR1g [W/Kg]	0.496	0.487
psSAR10g [W/Kg]	0.327	0.278
Power Drift [dB]	N/A	-0.01



Measurement Report for Band 13: LTE-FDD (SC-FDMA, 1 RB, 10 MHz, QPSK) RBPosition:Mid AntennaCfg:SISO, EDGE RIGHT

Exposure Conditions

Band	Band 13	TSL Permittivity	41.9
Frequency [MHz] Channel Number	782.000 23230	TSL Conductivity [S/m]	0.888
Group UID	LTE-FDD 10175-CAH	Phantom Section TSL	Flat HSL
Conversion Factor	10.62	Test Distance [mm]	5.00

Hardware Setup

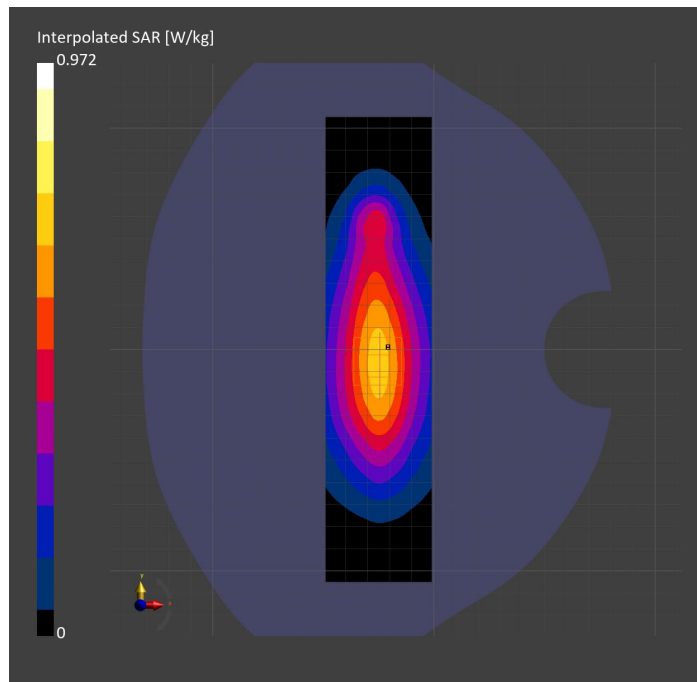
Probe Calibration Date	EX3DV4 - SN7589 2023-04-18	Phantom	Twin-SAM V5.0 (30deg probe tilt)
DAE Calibration Date	DAE4 Sn1544 2023-01-24	TSL Type	HBBL-600-10000
Software Version	16.2.4.2524		

Scan Setup

	Area Scan	Zoom Scan
Grid Extents [mm]	48.0 x 210.0	30.0 x 30.0 x 30.0
Grid Steps [mm]	8.0 x 15.0	6.0 x 6.0 x 1.5
Sensor Surface [mm]	3.0	1.4
Graded Grid	N/A	Yes
M2/M1 [%]		84.7
Dist 3dB Peak [mm]		> 15.0

Measurement Results

	Area Scan	Zoom Scan
psSAR1g [W/Kg]	0.603	0.609
psSAR10g [W/Kg]	0.400	0.405
Power Drift [dB]	N/A	-0.01



Measurement Report for Band 13: LTE-FDD (SC-FDMA, 1 RB, 10 MHz, QPSK) RBPosition:Mid AntennaCfg:SISO, CHEEK

Exposure Conditions

Band	Band 13	TSL Permittivity	41.2
Frequency [MHz] Channel Number	782.000 23230	TSL Conductivity [S/m]	0.886
Group UID	LTE-FDD 10175-CAH	Phantom Section TSL	RightHead HSL
Conversion Factor	10.62	Test Distance [mm]	0.00

Hardware Setup

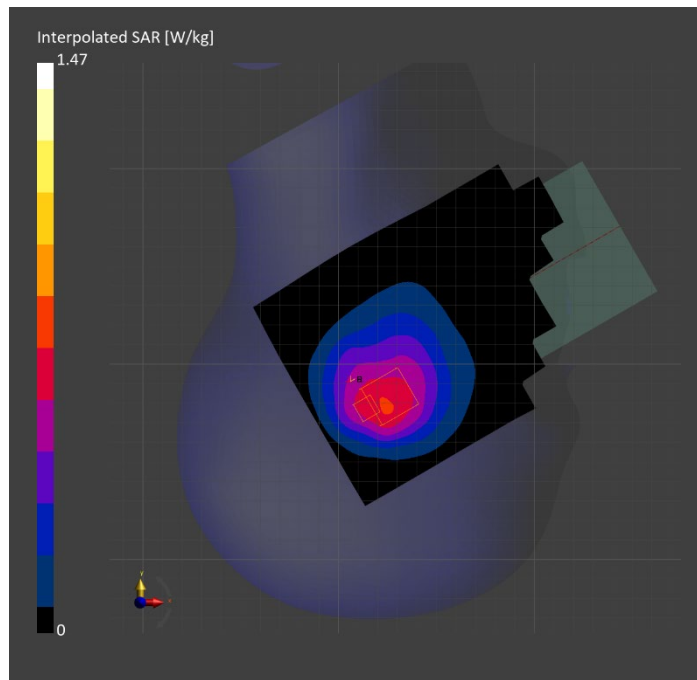
Probe Calibration Date	EX3DV4 - SN7589 2023-04-18	Phantom	Twin-SAM V5.0 (30deg probe tilt)
DAE Calibration Date	DAE4 Sn1544 2023-01-24	TSL Type	HBBL-600-10000
Software Version	16.2.4.2524		

Scan Setup

	Area Scan	Zoom Scan
Grid Extents [mm]	120.0 x 210.0	30.0 x 30.0 x 30.0
Grid Steps [mm]	15.0 x 15.0	6.0 x 6.0 x 1.5
Sensor Surface [mm]	3.0	1.4
Graded Grid	N/A	Yes
M2/M1 [%]		72.4
Dist 3dB Peak [mm]		8.7

Measurement Results

	Area Scan	Zoom Scan
psSAR1g [W/Kg]	0.646	0.672
psSAR10g [W/Kg]	0.438	0.443
Power Drift [dB]	N/A	-0.05



Measurement Report for Band 13: LTE-FDD (SC-FDMA, 1 RB, 10 MHz, QPSK) RBPosition:Mid AntennaCfg:SISO, BACK

Exposure Conditions

Band	Band 13	TSL Permittivity	41.5
Frequency [MHz] Channel Number	782.000 23230	TSL Conductivity [S/m]	0.924
Group UID	LTE-FDD 10175-CAH	Phantom Section TSL	Flat HSL
Conversion Factor	8.93	Test Distance [mm]	5.00

Hardware Setup

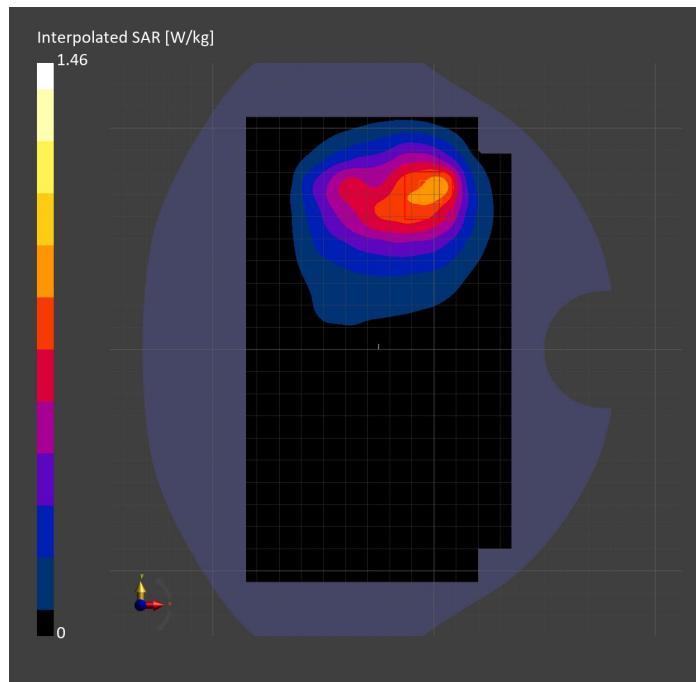
Probe Calibration Date	EX3DV4 - SN7448 2023-02-14	Phantom	Twin-SAM V5.0 (30deg probe tilt)
DAE Calibration Date	DAE4 Sn1472 2023-01-23	TSL Type	HBBL-600-10000
Software Version	16.2.4.2524		

Scan Setup

	Area Scan	Zoom Scan
Grid Extents [mm]	120.0 x 210.0	30.0 x 30.0 x 30.0
Grid Steps [mm]	15.0 x 15.0	6.0 x 6.0 x 1.5
Sensor Surface [mm]	3.0	1.4
Graded Grid	N/A	Yes
M2/M1 [%]		82.8
Dist 3dB Peak [mm]		13.0

Measurement Results

	Area Scan	Zoom Scan
psSAR1g [W/Kg]	0.807	0.797
psSAR10g [W/Kg]	0.530	0.464
Power Drift [dB]	N/A	-0.02



Measurement Report for Band 14: LTE-FDD (SC-FDMA, 1 RB, 10 MHz, QPSK) RBPosition:Mid AntennaCfg:SISO, EDGE RIGHT

Exposure Conditions

Band	Band 14	TSL Permittivity	41.8
Frequency [MHz] Channel Number	793.000 23330	TSL Conductivity [S/m]	0.892
Group UID	LTE-FDD 10175-CAH	Phantom Section TSL	Flat HSL
Conversion Factor	10.62	Test Distance [mm]	5.00

Hardware Setup

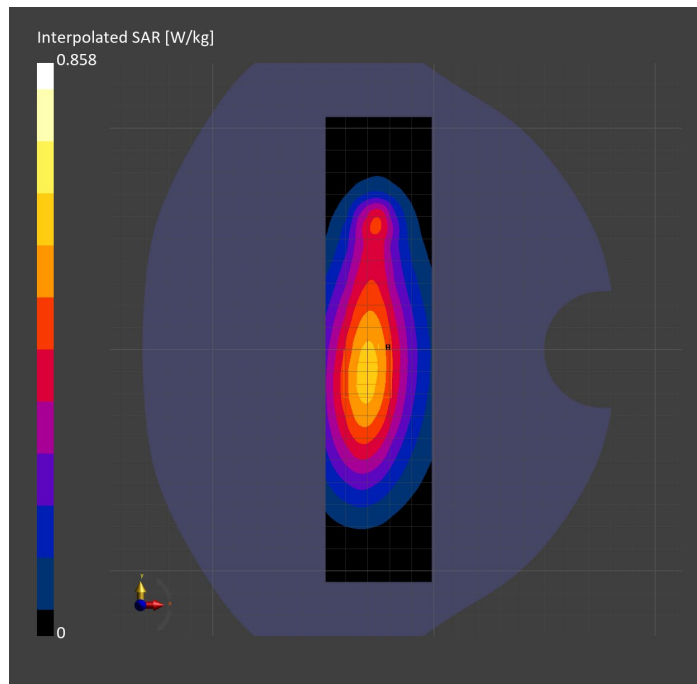
Probe Calibration Date	EX3DV4 - SN7589 2023-04-18	Phantom	Twin-SAM V5.0 (30deg probe tilt)
DAE Calibration Date	DAE4 Sn1544 2023-01-24	TSL Type	HBBL-600-10000
Software Version	16.2.4.2524		

Scan Setup

	Area Scan	Zoom Scan
Grid Extents [mm]	48.0 x 210.0	30.0 x 30.0 x 30.0
Grid Steps [mm]	8.0 x 15.0	6.0 x 6.0 x 1.5
Sensor Surface [mm]	3.0	1.4
Graded Grid	N/A	Yes
M2/M1 [%]		84.7
Dist 3dB Peak [mm]		16.4

Measurement Results

	Area Scan	Zoom Scan
psSAR1g [W/Kg]	0.528	0.534
psSAR10g [W/Kg]	0.350	0.352
Power Drift [dB]	N/A	-0.01



Measurement Report for Band 14: LTE-FDD (SC-FDMA, 50% RB, 10 MHz, QPSK) RBPosition:Mid AntennaCfg:SISO, CHEEK

Exposure Conditions

Band	Band 14	TSL Permittivity	41.2
Frequency [MHz] Channel Number	793.000 23330	TSL Conductivity [S/m]	0.889
Group UID	LTE-FDD 10154-CAH	Phantom Section TSL	RightHead HSL
Conversion Factor	10.62	Test Distance [mm]	0.00

Hardware Setup

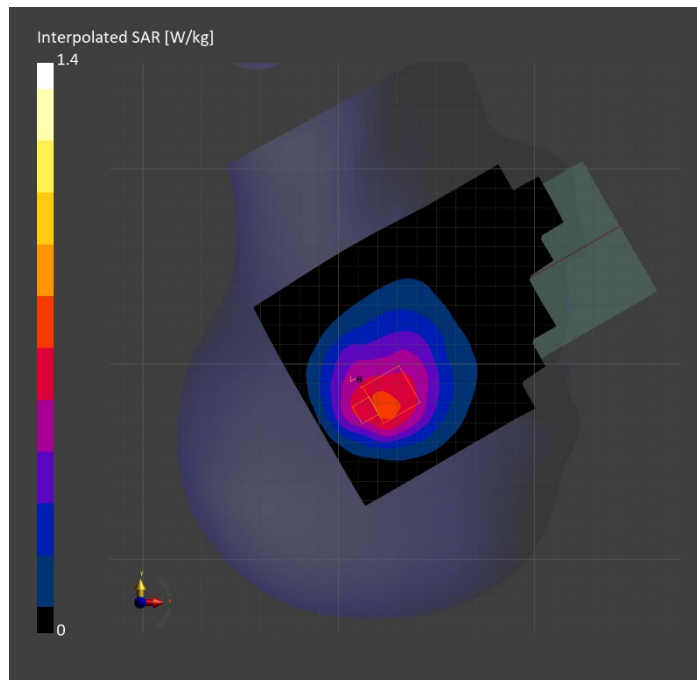
Probe Calibration Date	EX3DV4 - SN7589 2023-04-18	Phantom	Twin-SAM V5.0 (30deg probe tilt)
DAE Calibration Date	DAE4 Sn1544 2023-01-24	TSL Type	HBBL-600-10000
Software Version	16.2.4.2524		

Scan Setup

	Area Scan	Zoom Scan
Grid Extents [mm]	120.0 x 210.0	30.0 x 30.0 x 30.0
Grid Steps [mm]	15.0 x 15.0	6.0 x 6.0 x 1.5
Sensor Surface [mm]	3.0	1.4
Graded Grid	N/A	Yes
M2/M1 [%]		73.5
Dist 3dB Peak [mm]		9.4

Measurement Results

	Area Scan	Zoom Scan
psSAR1g [W/Kg]	0.639	0.655
psSAR10g [W/Kg]	0.434	0.434
Power Drift [dB]	N/A	0.01



Measurement Report for Band 14: LTE-FDD (SC-FDMA, 1 RB, 10 MHz, QPSK) RBPosition:Mid AntennaCfg:SISO, BACK

Exposure Conditions

Band	Band 14	TSL Permittivity	41.4
Frequency [MHz] Channel Number	793.000 23330	TSL Conductivity [S/m]	0.927
Group UID	LTE-FDD 10175-CAH	Phantom Section TSL	Flat HSL
Conversion Factor	8.93	Test Distance [mm]	5.00

Hardware Setup

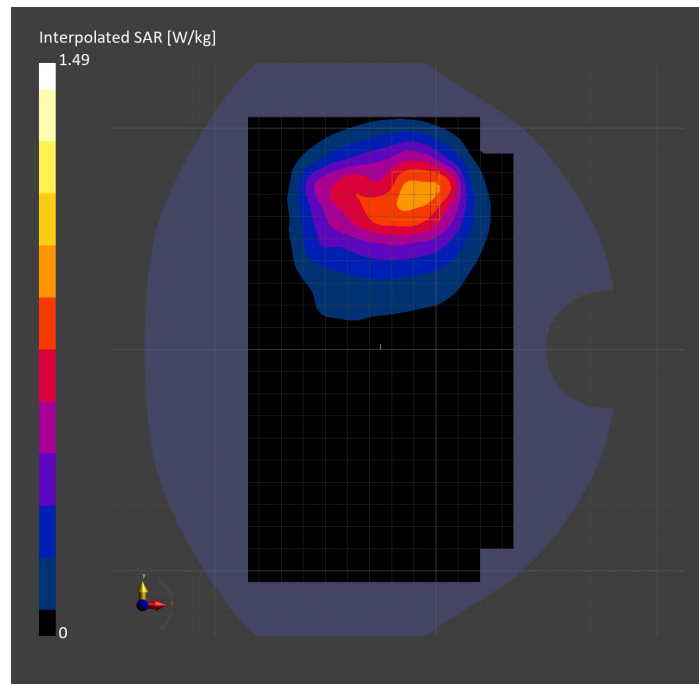
Probe Calibration Date	EX3DV4 - SN7448 2023-02-14	Phantom	Twin-SAM V5.0 (30deg probe tilt)
DAE Calibration Date	DAE4 Sn1472 2023-01-23	TSL Type	HBBL-600-10000
Software Version	16.2.4.2524		

Scan Setup

	Area Scan	Zoom Scan
Grid Extents [mm]	120.0 x 210.0	30.0 x 30.0 x 30.0
Grid Steps [mm]	15.0 x 15.0	6.0 x 6.0 x 1.5
Sensor Surface [mm]	3.0	1.4
Graded Grid	N/A	Yes
M2/M1 [%]		81.3
Dist 3dB Peak [mm]		16.1

Measurement Results

	Area Scan	Zoom Scan
psSAR1g [W/Kg]	0.815	0.822
psSAR10g [W/Kg]	0.546	0.491
Power Drift [dB]	N/A	-0.03



Measurement Report for Band 25: LTE-FDD (SC-FDMA, 50% RB, 20 MHz, QPSK) RBPosition:Mid AntennaCfg:SISO, CHEEK

Exposure Conditions

Band	Band 25	TSL Permittivity	40.3
Frequency [MHz] Channel Number	1882.500 26365	TSL Conductivity [S/m]	1.42
Group UID	LTE-FDD 10297-AAE	Phantom Section TSL	LeftHead HSL
Conversion Factor	7.53	Test Distance [mm]	0.00

Hardware Setup

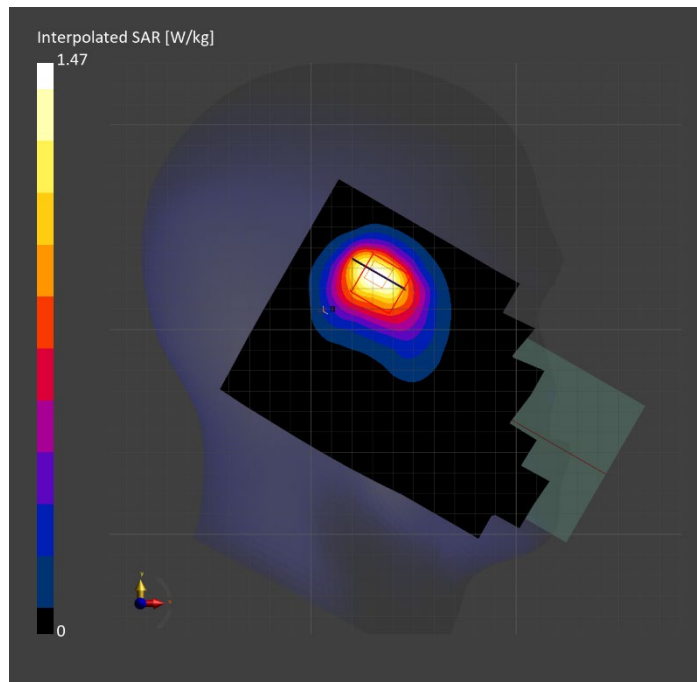
Probe Calibration Date	EX3DV4 - SN7807 2023-04-11	Phantom	Twin-SAM V8.0 (30deg probe tilt)
DAE Calibration Date	DAE4 Sn1799 2023-04-04	TSL Type	HBBL-600-10000
Software Version	16.2.4.2524		

Scan Setup

	Area Scan	Zoom Scan
Grid Extents [mm]	120.0 x 210.0	30.0 x 30.0 x 30.0
Grid Steps [mm]	15.0 x 15.0	6.0 x 6.0 x 1.5
Sensor Surface [mm]	3.0	1.4
Graded Grid	N/A	Yes
M2/M1 [%]		86.3
Dist 3dB Peak [mm]		10.3

Measurement Results

	Area Scan	Zoom Scan
psSAR1g [W/Kg]	0.824	0.819
psSAR10g [W/Kg]	0.461	0.455
Power Drift [dB]	N/A	0.01



Measurement Report for Band 25: LTE-FDD (SC-FDMA, 1 RB, 20 MHz, QPSK) RBPosition:Mid AntennaCfg:SISO, BACK

Exposure Conditions

Band	Band 25	TSL Permittivity	38.0
Frequency [MHz] Channel Number	1905.000 26590	TSL Conductivity [S/m]	1.45
Group UID	LTE-FDD 10169-CAF	Phantom Section TSL	Flat HSL
Conversion Factor	7.53	Test Distance [mm]	5.00

Hardware Setup

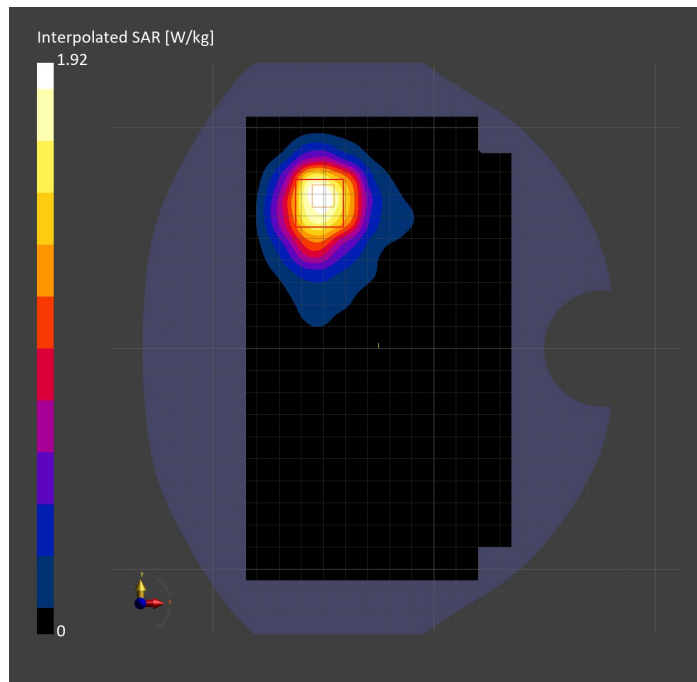
Probe Calibration Date	EX3DV4 - SN7807 2023-04-11	Phantom	Twin-SAM V8.0 (30deg probe tilt)
DAE Calibration Date	DAE4 Sn1799 2023-04-04	TSL Type	HBBL-600-10000
Software Version	16.2.4.2524		

Scan Setup

	Area Scan	Zoom Scan
Grid Extents [mm]	120.0 x 210.0	30.0 x 30.0 x 30.0
Grid Steps [mm]	15.0 x 15.0	6.0 x 6.0 x 1.5
Sensor Surface [mm]	3.0	1.4
Graded Grid	N/A	Yes
M2/M1 [%]		73.7
Dist 3dB Peak [mm]		10.2

Measurement Results

	Area Scan	Zoom Scan
psSAR1g [W/Kg]	0.767	0.844
psSAR10g [W/Kg]	0.434	0.444
Power Drift [dB]	N/A	-0.01



Measurement Report for Band 25: LTE-FDD (SC-FDMA, 1 RB, 20 MHz, QPSK) RBPosition:Mid AntennaCfg:SISO, EDGE RIGHT

Exposure Conditions

Band	Band 25	TSL Permittivity	38.2
Frequency [MHz] Channel Number	1882.500 26365	TSL Conductivity [S/m]	1.39
Group UID	LTE-FDD 10169-CAF	Phantom Section TSL	Flat HSL
Conversion Factor	7.53	Test Distance [mm]	5.00

Hardware Setup

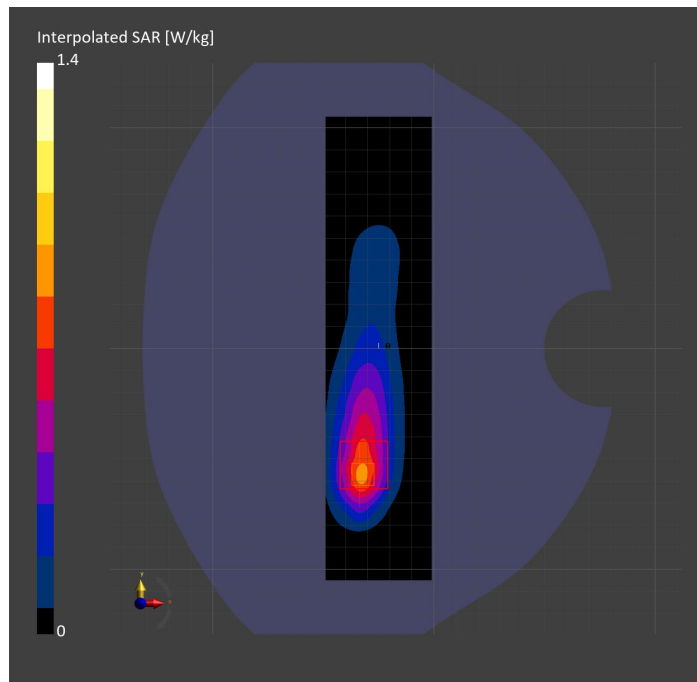
Probe Calibration Date	EX3DV4 - SN7807 2023-04-11	Phantom	Twin-SAM V8.0 (30deg probe tilt)
DAE Calibration Date	DAE4 Sn1799 2023-04-04	TSL Type	HBBL-600-10000
Software Version	16.2.4.2524		

Scan Setup

	Area Scan	Zoom Scan
Grid Extents [mm]	48.0 x 210.0	30.0 x 30.0 x 30.0
Grid Steps [mm]	8.0 x 15.0	6.0 x 6.0 x 1.5
Sensor Surface [mm]	3.0	1.4
Graded Grid	N/A	Yes
M2/M1 [%]		78.6
Dist 3dB Peak [mm]		8.1

Measurement Results

	Area Scan	Zoom Scan
psSAR1g [W/Kg]	0.675	0.660
psSAR10g [W/Kg]	0.345	0.335
Power Drift [dB]	N/A	0.01



Measurement Report for Band 26: LTE-FDD (SC-FDMA, 1 RB, 10 MHz, QPSK) RBPosition:Mid AntennaCfg:SISO, BACK

Exposure Conditions

Band	Band 26	TSL Permittivity	41.4
Frequency [MHz] Channel Number	831.500 26865	TSL Conductivity [S/m]	0.872
Group UID	LTE-FDD 10175-CAH	Phantom Section TSL	Flat HSL
Conversion Factor	8.76	Test Distance [mm]	5.00

Hardware Setup

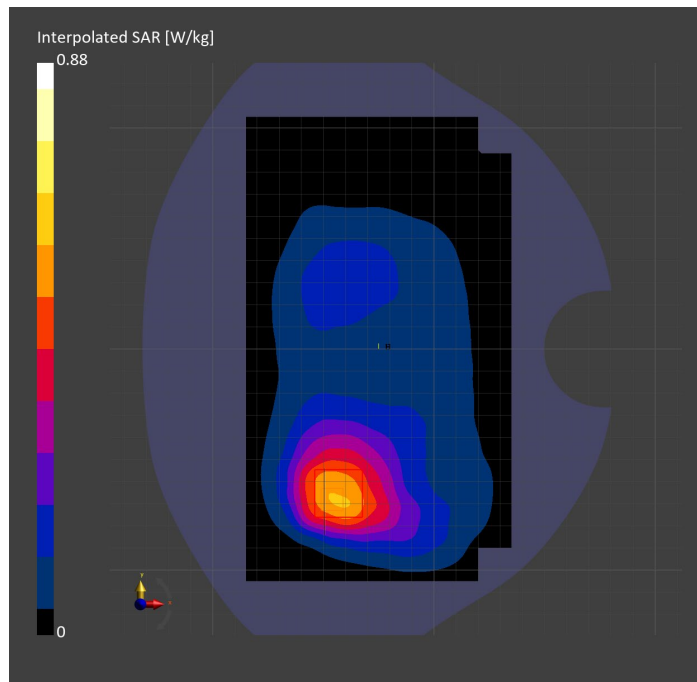
Probe Calibration Date	EX3DV4 - SN7806 2023-04-04	Phantom	Twin-SAM V8.0 (30deg probe tilt)
DAE Calibration Date	DAE4 Sn1784 2023-04-03	TSL Type	HBBL-600-10000
Software Version	16.2.4.2524		

Scan Setup

	Area Scan	Zoom Scan
Grid Extents [mm]	120.0 x 210.0	30.0 x 30.0 x 30.0
Grid Steps [mm]	15.0 x 15.0	6.0 x 6.0 x 1.5
Sensor Surface [mm]	3.0	1.4
Graded Grid	N/A	Yes
M2/M1 [%]		87.1
Dist 3dB Peak [mm]		12.3

Measurement Results

	Area Scan	Zoom Scan
psSAR1g [W/Kg]	0.525	0.545
psSAR10g [W/Kg]	0.349	0.359
Power Drift [dB]	N/A	0.03



Measurement Report for Band 26: LTE-FDD (SC-FDMA, 100% RB, 10 MHz, QPSK) AntennaCfg:SISO, CHEEK

Exposure Conditions

Band	Band 26	TSL Permittivity	41.1
Frequency [MHz] Channel Number	831.500 26865	TSL Conductivity [S/m]	0.867
Group UID	LTE-FDD 10108-CAH	Phantom Section TSL	RightHead HSL
Conversion Factor	7.83	Test Distance [mm]	0.00

Hardware Setup

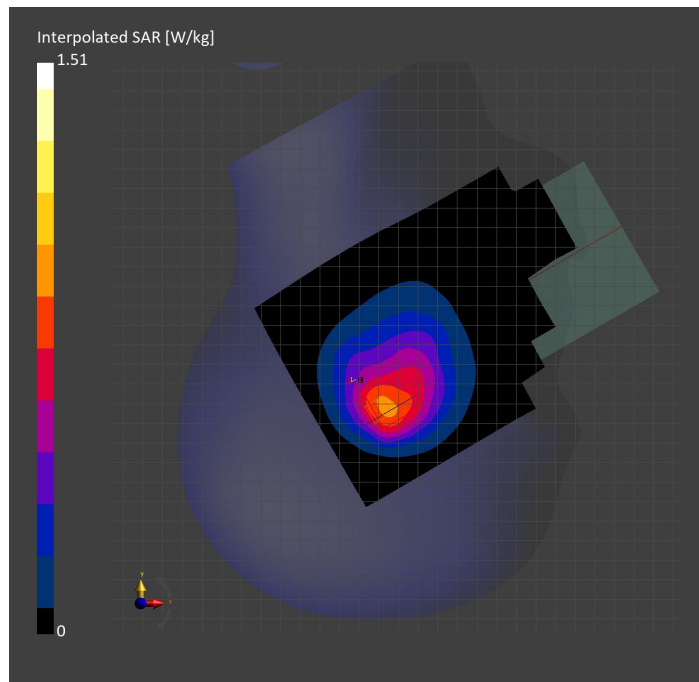
Probe Calibration Date	EX3DV4 - SN3749 2023-01-27	Phantom	Twin-SAM V8.0 (30deg probe tilt)
DAE Calibration Date	DAE4 Sn1357 2023-01-27	TSL Type	HBBL-600-10000
Software Version	16.2.4.2524		

Scan Setup

	Area Scan	Zoom Scan
Grid Extents [mm]	120.0 x 210.0	30.0 x 30.0 x 30.0
Grid Steps [mm]	15.0 x 15.0	6.0 x 6.0 x 1.5
Sensor Surface [mm]	3.0	1.4
Graded Grid	N/A	Yes
M2/M1 [%]		76.4
Dist 3dB Peak [mm]		9.4

Measurement Results

	Area Scan	Zoom Scan
psSAR1g [W/Kg]	0.786	0.771
psSAR10g [W/Kg]	0.512	0.503
Power Drift [dB]	N/A	0.02



Measurement Report for Band 26: LTE-FDD (SC-FDMA, 1 RB, 10 MHz, QPSK) RBPosition:Mid AntennaCfg:SISO, EDGE BOTTOM

Exposure Conditions

Band	Band 26	TSL Permittivity	41.4
Frequency [MHz] Channel Number	831.500 26865	TSL Conductivity [S/m]	0.872
Group UID	LTE-FDD 10175-CAH	Phantom Section TSL	Flat HSL
Conversion Factor	8.76	Test Distance [mm]	5.00

Hardware Setup

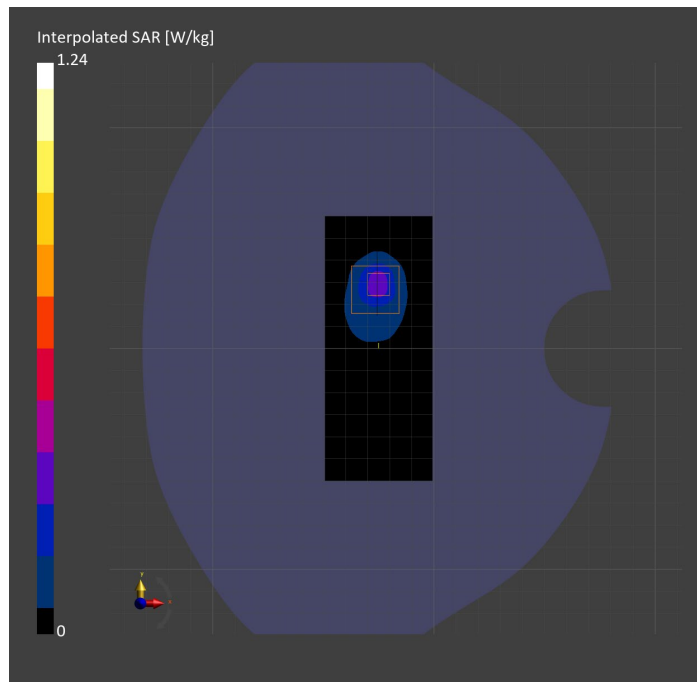
Probe Calibration Date	EX3DV4 - SN7806 2023-04-04	Phantom	Twin-SAM V8.0 (30deg probe tilt)
DAE Calibration Date	DAE4 Sn1784 2023-04-03	TSL Type	HBBL-600-10000
Software Version	16.2.4.2524		

Scan Setup

	Area Scan	Zoom Scan
Grid Extents [mm]	48.6 x 120.0	30.0 x 30.0 x 30.0
Grid Steps [mm]	8.1 x 15.0	6.0 x 6.0 x 1.5
Sensor Surface [mm]	3.0	1.4
Graded Grid	N/A	Yes
M2/M1 [%]		55.0
Dist 3dB Peak [mm]		7.0

Measurement Results

	Area Scan	Zoom Scan
psSAR1g [W/Kg]	0.298	0.323
psSAR10g [W/Kg]	0.149	0.124
Power Drift [dB]	N/A	-0.01



Measurement Report for Band 30: LTE-FDD (SC-FDMA, 1 RB, 10 MHz, QPSK) RBPosition:Mid AntennaCfg:SISO, EDGE RIGHT

Exposure Conditions

Band	Band 30	TSL Permittivity	41.1
Frequency [MHz] Channel Number	2310.000 27710	TSL Conductivity [S/m]	1.71
Group UID	LTE-FDD 10175-CAH	Phantom Section TSL	Flat HSL
Conversion Factor	7.71	Test Distance [mm]	5.00

Hardware Setup

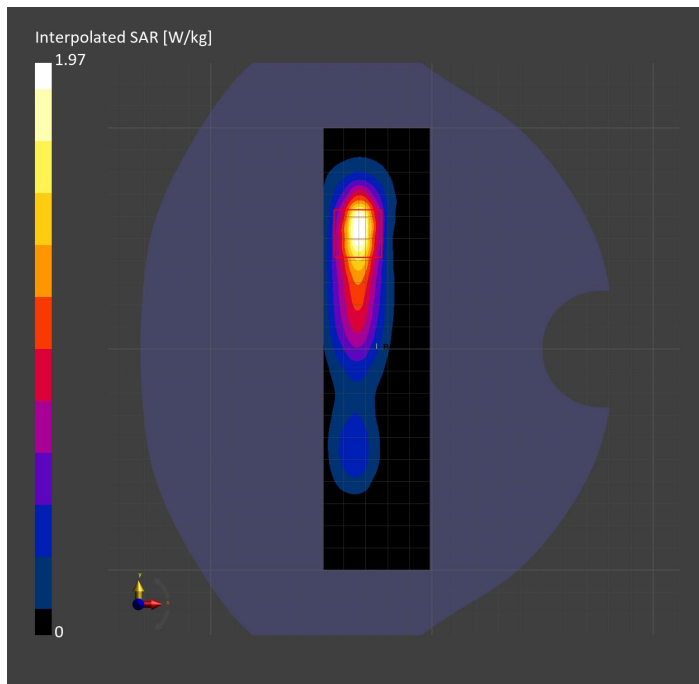
Probe Calibration Date	EX3DV4 - SN7482 2023-04-18	Phantom	Twin-SAM V8.0 (30deg probe tilt)
DAE Calibration Date	DAE4 Sn1380 2023-02-14	TSL Type	HBBL-600-10000
Software Version	16.2.4.2524		

Scan Setup

	Area Scan	Zoom Scan
Grid Extents [mm]	48.0 x 200.0	30.0 x 30.0 x 30.0
Grid Steps [mm]	8.0 x 10.0	5.0 x 5.0 x 1.5
Sensor Surface [mm]	3.0	1.4
Graded Grid	N/A	Yes
M2/M1 [%]		76.9
Dist 3dB Peak [mm]		7.0

Measurement Results

	Area Scan	Zoom Scan
psSAR1g [W/Kg]	0.840	0.865
psSAR10g [W/Kg]	0.375	0.380
Power Drift [dB]	N/A	0.00



Measurement Report for Band 30: LTE-FDD (SC-FDMA, 50% RB, 10 MHz, QPSK) RBPosition:Mid AntennaCfg:SISO, BACK

Exposure Conditions

Band	Band 30	TSL Permittivity	39.9
Frequency [MHz] Channel Number	2310.000 27710	TSL Conductivity [S/m]	1.62
Group UID	LTE-FDD 10154-CAH	Phantom Section TSL	Flat HSL
Conversion Factor	7.71	Test Distance [mm]	5.00

Hardware Setup

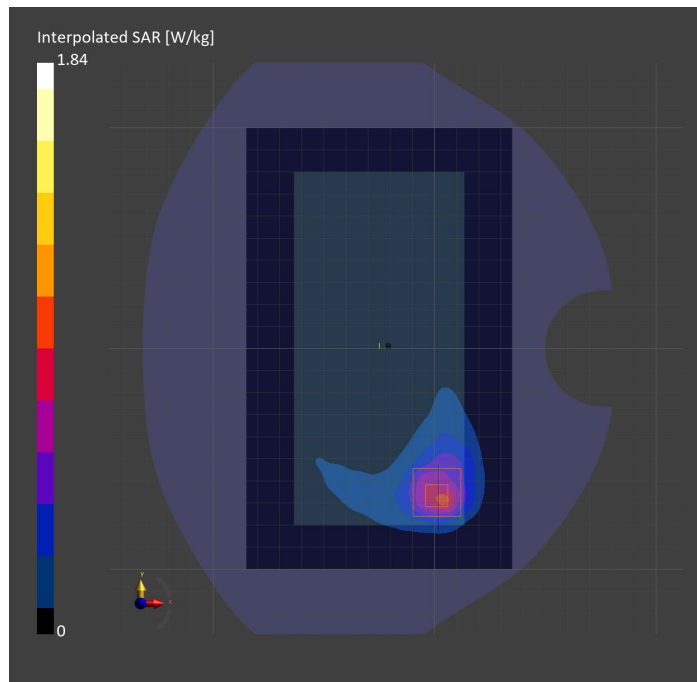
Probe Calibration Date	EX3DV4 - SN7482 2023-04-18	Phantom	Twin-SAM V8.0 (30deg probe tilt)
DAE Calibration Date	DAE4 Sn1380 2023-02-14	TSL Type	HBBL-600-10000
Software Version	16.2.4.2524		

Scan Setup

	Area Scan	Zoom Scan
Grid Extents [mm]	120.0 x 200.0	30.0 x 30.0 x 30.0
Grid Steps [mm]	10.0 x 10.0	5.0 x 5.0 x 1.5
Sensor Surface [mm]	3.0	1.4
Graded Grid	N/A	Yes
M2/M1 [%]		75.1
Dist 3dB Peak [mm]		8.5

Measurement Results

	Area Scan	Zoom Scan
psSAR1g [W/Kg]	0.725	0.785
psSAR10g [W/Kg]	0.356	0.335
Power Drift [dB]	N/A	-0.03



Measurement Report for Band 30: LTE-FDD (SC-FDMA, 50% RB, 10 MHz, QPSK) RBPosition:Mid AntennaCfg:SISO, CHEEK

Exposure Conditions

Band	Band 30	TSL Permittivity	38.6
Frequency [MHz] Channel Number	2310.000 27710	TSL Conductivity [S/m]	1.68
Group UID	LTE-FDD 10154-CAH	Phantom Section TSL	LeftHead HSL
Conversion Factor	7.71	Test Distance [mm]	0.00

Hardware Setup

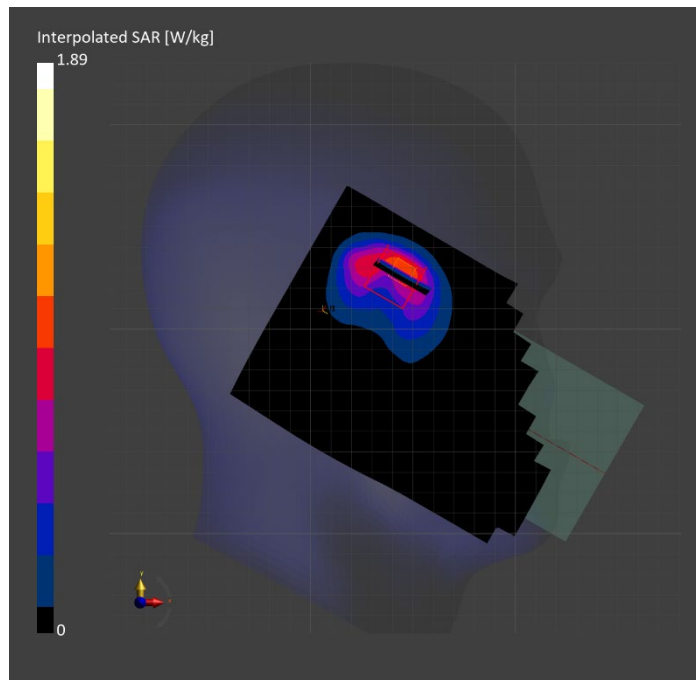
Probe Calibration Date	EX3DV4 - SN7482 2023-04-18	Phantom	Twin-SAM V8.0 (30deg probe tilt)
DAE Calibration Date	DAE4 Sn1380 2023-02-14	TSL Type	HBBL-600-10000
Software Version	16.2.4.2524		

Scan Setup

	Area Scan	Zoom Scan
Grid Extents [mm]	120.0 x 200.0	30.0 x 30.0 x 30.0
Grid Steps [mm]	10.0 x 10.0	5.0 x 5.0 x 1.5
Sensor Surface [mm]	3.0	1.4
Graded Grid	N/A	Yes
M2/M1 [%]		77.7
Dist 3dB Peak [mm]		7.0

Measurement Results

	Area Scan	Zoom Scan
psSAR1g [W/Kg]	0.806	0.851
psSAR10g [W/Kg]	0.409	0.426
Power Drift [dB]	N/A	-0.02



Measurement Report for Band 41: LTE-TDD (SC-FDMA, 50% RB, 20 MHz, QPSK, UL Subframe=2,3,4,7,8,9) RBPosition:Mid AntennaCfg:SISO, BACK

Exposure Conditions

Band	Band 41	TSL Permittivity	38.0
Frequency [MHz] Channel Number	2549.500 40185	TSL Conductivity [S/m]	1.93
Group UID	LTE-TDD 10494-AAG	Phantom Section TSL	Flat HSL
Conversion Factor	7.32	Test Distance [mm]	5.00

Hardware Setup

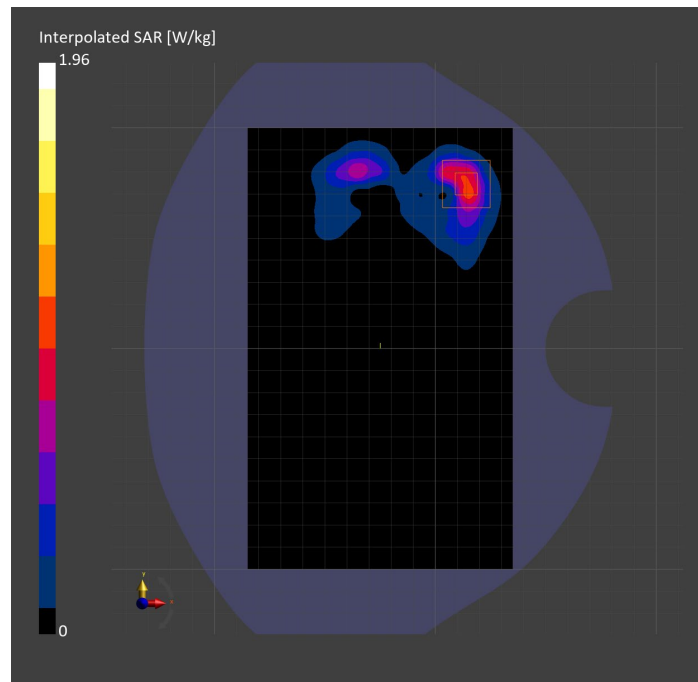
Probe Calibration Date	EX3DV4 - SN3885 2022-09-20	Phantom	Twin-SAM V5.0 (30deg probe tilt)
DAE Calibration Date	DAE4 Sn1548 2023-02-14	TSL Type	HBBL-600-10000
Software Version	16.2.4.2524		

Scan Setup

	Area Scan	Zoom Scan
Grid Extents [mm]	120.0 x 200.0	30.0 x 30.0 x 30.0
Grid Steps [mm]	10.0 x 10.0	5.0 x 5.0 x 1.5
Sensor Surface [mm]	3.0	1.4
Graded Grid	N/A	Yes
M2/M1 [%]		78.0
Dist 3dB Peak [mm]		6.5

Measurement Results

	Area Scan	Zoom Scan
psSAR1g [W/Kg]	0.772	0.825
psSAR10g [W/Kg]	0.331	0.328
Power Drift [dB]	N/A	0.00



Measurement Report for Band 41: LTE-TDD (SC-FDMA, 100% RB, 20 MHz, QPSK, UL Subframe=2,3,4,7,8,9) AntennaCfg:SISO, CHEEK

Exposure Conditions

Band	Band 41	TSL Permittivity	38.5
Frequency [MHz] Channel Number	2593.000 40620	TSL Conductivity [S/m]	1.93
Group UID	LTE-TDD 10512-AAG	Phantom Section TSL	LeftHead HSL
Conversion Factor	7.32	Test Distance [mm]	0.00

Hardware Setup

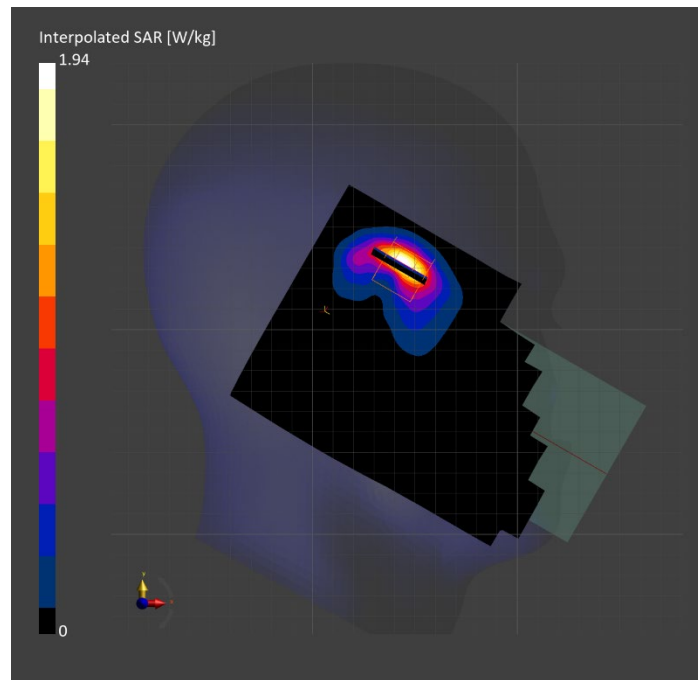
Probe Calibration Date	EX3DV4 - SN3885 2022-09-20	Phantom	Twin-SAM V5.0 (30deg probe tilt)
DAE Calibration Date	DAE4 Sn1548 2023-02-14	TSL Type	HBBL-600-10000
Software Version	16.2.4.2524		

Scan Setup

	Area Scan	Zoom Scan
Grid Extents [mm]	120.0 x 200.0	30.0 x 30.0 x 30.0
Grid Steps [mm]	10.0 x 10.0	5.0 x 5.0 x 1.5
Sensor Surface [mm]	3.0	1.4
Graded Grid	N/A	Yes
M2/M1 [%]		72.1
Dist 3dB Peak [mm]		5.1

Measurement Results

	Area Scan	Zoom Scan
psSAR1g [W/Kg]	0.674	0.715
psSAR10g [W/Kg]	0.282	0.283
Power Drift [dB]	N/A	-0.01



Measurement Report for Band 41: LTE-TDD (SC-FDMA, 1 RB, 20 MHz, QPSK, UL Subframe=2,3,4,7,8,9) RBPosition:Mid AntennaCfg:SISO, EDGE RIGHT

Exposure Conditions

Band	Band 41	TSL Permittivity	37.8
Frequency [MHz] Channel Number	2636.500 41055	TSL Conductivity [S/m]	2.00
Group UID	LTE-TDD 10435-AAG	Phantom Section TSL	Flat HSL
Conversion Factor	7.32	Test Distance [mm]	5.00

Hardware Setup

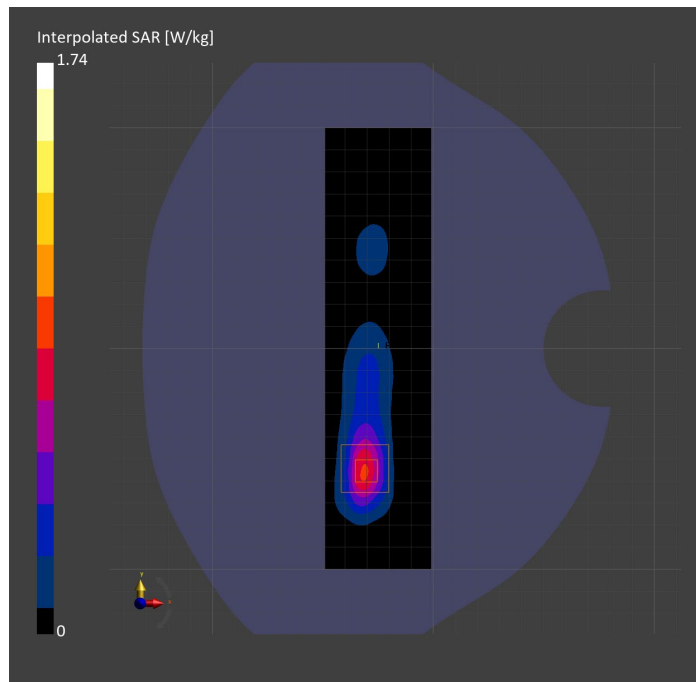
Probe Calibration Date	EX3DV4 - SN3885 2022-09-20	Phantom	Twin-SAM V5.0 (30deg probe tilt)
DAE Calibration Date	DAE4 Sn1548 2023-02-14	TSL Type	HBBL-600-10000
Software Version	16.2.4.2524		

Scan Setup

	Area Scan	Zoom Scan
Grid Extents [mm]	48.0 x 200.0	30.0 x 30.0 x 30.0
Grid Steps [mm]	8.0 x 10.0	5.0 x 5.0 x 1.5
Sensor Surface [mm]	3.0	1.4
Graded Grid	N/A	Yes
M2/M1 [%]		77.0
Dist 3dB Peak [mm]		6.8

Measurement Results

	Area Scan	Zoom Scan
psSAR1g [W/Kg]	0.664	0.721
psSAR10g [W/Kg]	0.285	0.290
Power Drift [dB]	N/A	-0.12



Measurement Report for Band 48: LTE-TDD (SC-FDMA, 1 RB, 20 MHz, QPSK, UL Subframe=2,3,4,7,8,9) RBPosition:Mid AntennaCfg:SISO, CHEEK

Exposure Conditions

Band	Band 48	TSL Permittivity	38.9
Frequency [MHz] Channel Number	3646.700 56207	TSL Conductivity [S/m]	3.06
Group UID	LTE-TDD 10435-AAG	Phantom Section TSL	RightHead HSL
Conversion Factor	6.66	Test Distance [mm]	0.00

Hardware Setup

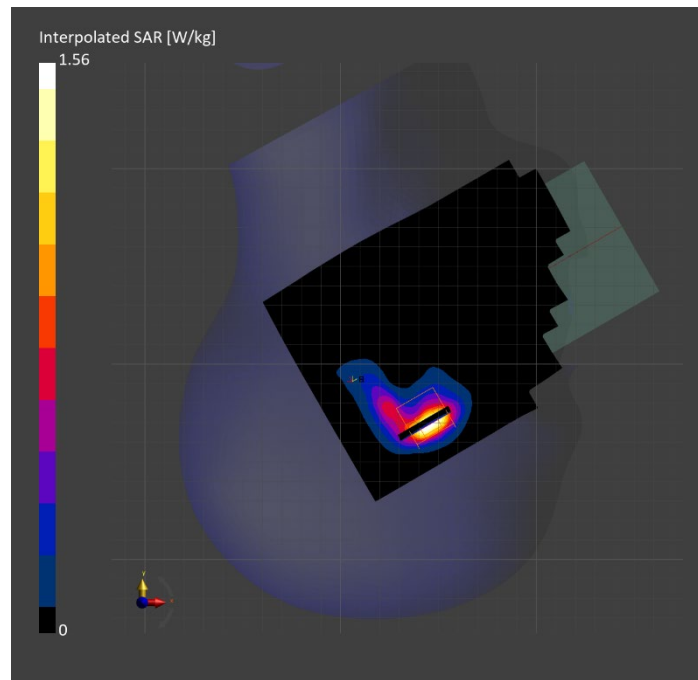
Probe Calibration Date	EX3DV4 - SN3990 2023-02-17	Phantom	Twin-SAM V5.0 (30deg probe tilt)
DAE Calibration Date	DAE4 Sn1545 2023-02-14	TSL Type	HBBL-600-10000
Software Version	16.2.4.2524		

Scan Setup

	Area Scan	Zoom Scan
Grid Extents [mm]	120.0 x 200.0	30.0 x 30.0 x 28.0
Grid Steps [mm]	10.0 x 10.0	5.0 x 5.0 x 1.4
Sensor Surface [mm]	3.0	1.4
Graded Grid	N/A	Yes
M2/M1 [%]		70.9
Dist 3dB Peak [mm]		5.1

Measurement Results

	Area Scan	Zoom Scan
psSAR1g [W/Kg]	0.466	0.496
psSAR10g [W/Kg]	0.171	0.169
Power Drift [dB]	N/A	0.04



Measurement Report for Band 48: LTE-TDD (SC-FDMA, 50% RB, 20 MHz, QPSK, UL Subframe=2,3,4,7,8,9) RBPosition:Mid AntennaCfg:SISO, BACK

Exposure Conditions

Band	Band 48	TSL Permittivity	38.8
Frequency [MHz] Channel Number	3646.700 56207	TSL Conductivity [S/m]	3.14
Group UID	LTE-TDD 10494-AAG	Phantom Section TSL	Flat HSL
Conversion Factor	6.92	Test Distance [mm]	5.00

Hardware Setup

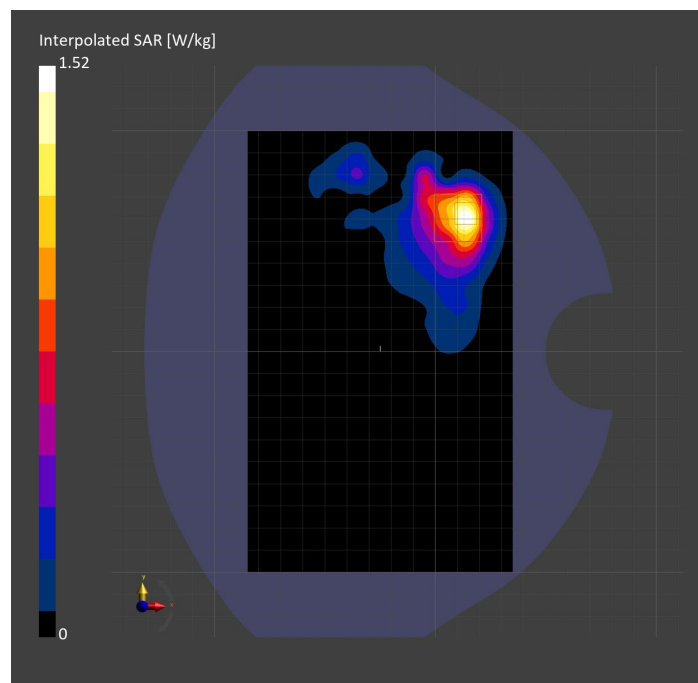
Probe Calibration Date	EX3DV4 - SN7335 2023-01-26	Phantom	Twin-SAM V8.0 (30deg probe tilt)
DAE Calibration Date	DAE4ip Sn1619 2023-04-18	TSL Type	HBBL-600-10000
Software Version	16.2.4.2524		

Scan Setup

	Area Scan	Zoom Scan
Grid Extents [mm]	120.0 x 200.0	30.0 x 30.0 x 28.0
Grid Steps [mm]	10.0 x 10.0	5.0 x 5.0 x 1.4
Sensor Surface [mm]	3.0	1.4
Graded Grid	N/A	Yes
M2/M1 [%]		71.9
Dist 3dB Peak [mm]		8.1

Measurement Results

	Area Scan	Zoom Scan
psSAR1g [W/Kg]	0.520	0.516
psSAR10g [W/Kg]	0.215	0.205
Power Drift [dB]	N/A	-0.01



Measurement Report for Band 48: LTE-TDD (SC-FDMA, 50% RB, 20 MHz, QPSK, UL Subframe=2,3,4,7,8,9) RBPosition:Mid AntennaCfg:SISO, EDGE LEFT

Exposure Conditions

Band	Band 48	TSL Permittivity	38.8
Frequency [MHz] Channel Number	3646.700 56207	TSL Conductivity [S/m]	3.14
Group UID	LTE-TDD 10494-AAG	Phantom Section TSL	Flat HSL
Conversion Factor	6.92	Test Distance [mm]	5.00

Hardware Setup

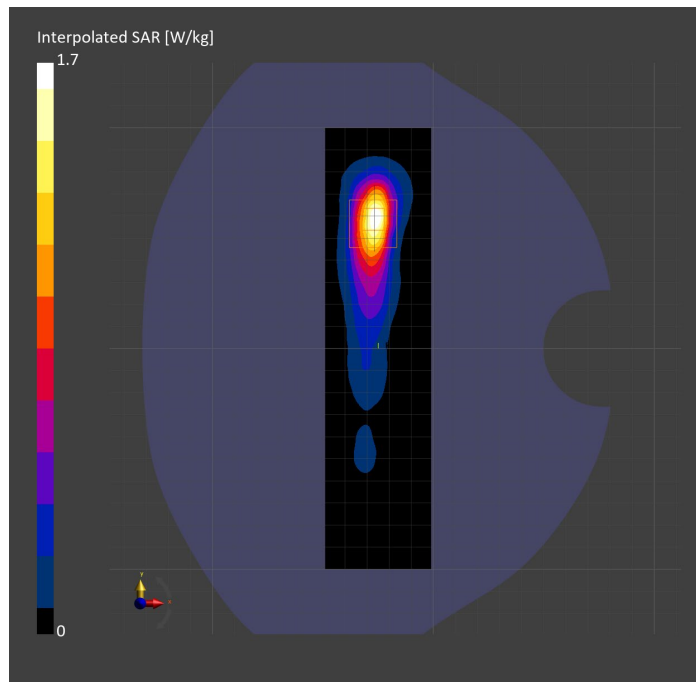
Probe Calibration Date	EX3DV4 - SN7335 2023-01-26	Phantom	Twin-SAM V8.0 (30deg probe tilt)
DAE Calibration Date	DAE4ip Sn1619 2023-04-18	TSL Type	HBBL-600-10000
Software Version	16.2.4.2524		

Scan Setup

	Area Scan	Zoom Scan
Grid Extents [mm]	48.0 x 200.0	30.0 x 30.0 x 28.0
Grid Steps [mm]	8.0 x 10.0	5.0 x 5.0 x 1.4
Sensor Surface [mm]	3.0	1.4
Graded Grid	N/A	Yes
M2/M1 [%]		72.7
Dist 3dB Peak [mm]		6.8

Measurement Results

	Area Scan	Zoom Scan
psSAR1g [W/Kg]	0.600	0.599
psSAR10g [W/Kg]	0.225	0.217
Power Drift [dB]	N/A	-0.00



Measurement Report for Band 53: LTE-TDD (SC-FDMA, 50% RB, 10 MHz, QPSK, UL Subframe=2,3,4,7,8,9) RBPosition:Mid AntennaCfg:SISO, CHEEK

Exposure Conditions

Band	Band 53	TSL Permittivity	37.8
Frequency [MHz] Channel Number	2489.200 60197	TSL Conductivity [S/m]	1.83
Group UID	LTE-TDD 10488-AAG	Phantom Section TSL	RightHead HSL
Conversion Factor	7.33	Test Distance [mm]	0.00

Hardware Setup

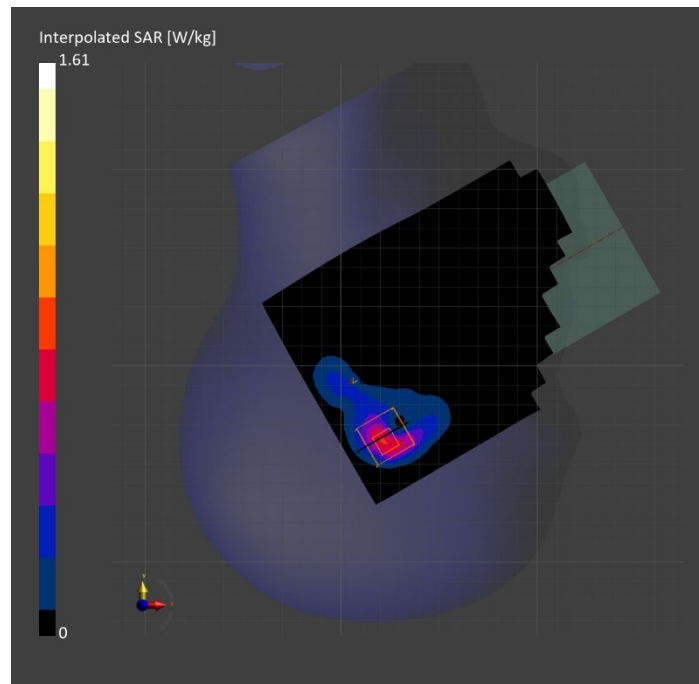
Probe Calibration Date	EX3DV4 - SN3772 2023-02-13	Phantom	Twin-SAM V8.0 (30deg probe tilt)
DAE Calibration Date	DAE4 Sn1359 2023-01-24	TSL Type	HBBL-600-10000
Software Version	16.2.4.2524		

Scan Setup

	Area Scan	Zoom Scan
Grid Extents [mm]	120.0 x 200.0	30.0 x 30.0 x 30.0
Grid Steps [mm]	10.0 x 10.0	5.0 x 5.0 x 1.5
Sensor Surface [mm]	3.0	1.4
Graded Grid	N/A	Yes
M2/M1 [%]		74.2
Dist 3dB Peak [mm]		5.7

Measurement Results

	Area Scan	Zoom Scan
psSAR1g [W/Kg]	0.604	0.643
psSAR10g [W/Kg]	0.262	0.256
Power Drift [dB]	N/A	-0.18



Measurement Report for Band 53: LTE-TDD (SC-FDMA, 50% RB, 10 MHz, QPSK, UL Subframe=2,3,4,7,8,9) RBPosition:Mid AntennaCfg:SISO, BACK

Exposure Conditions

Band	Band 53	TSL Permittivity	37.4
Frequency [MHz] Channel Number	2489.200 60197	TSL Conductivity [S/m]	1.82
Group UID	LTE-TDD 10488-AAG	Phantom Section TSL	Flat HSL
Conversion Factor	7.33	Test Distance [mm]	5.00

Hardware Setup

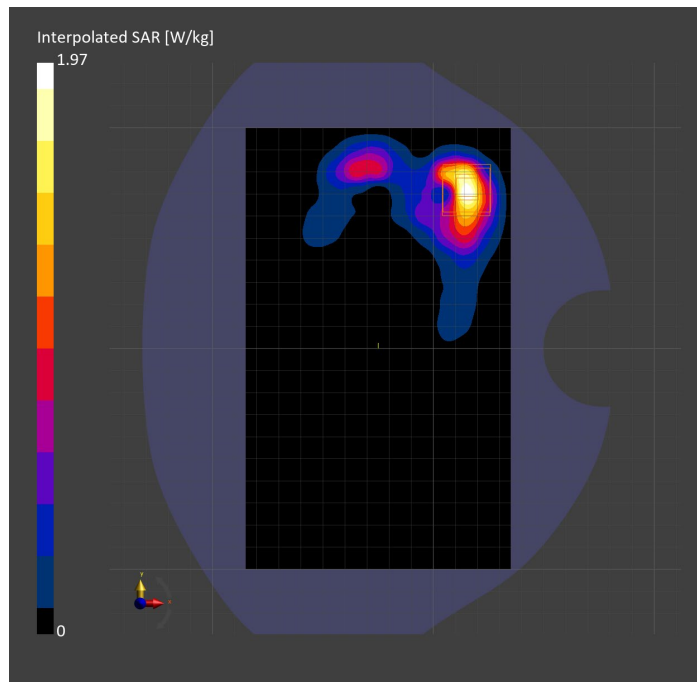
Probe Calibration Date	EX3DV4 - SN3772 2023-02-13	Phantom	Twin-SAM V8.0 (30deg probe tilt)
DAE Calibration Date	DAE4 Sn1359 2023-01-24	TSL Type	HBBL-600-10000
Software Version	16.2.4.2524		

Scan Setup

	Area Scan	Zoom Scan
Grid Extents [mm]	120.0 x 200.0	30.0 x 30.0 x 30.0
Grid Steps [mm]	10.0 x 10.0	5.0 x 5.0 x 1.5
Sensor Surface [mm]	3.0	1.4
Graded Grid	N/A	Yes
M2/M1 [%]		78.3
Dist 3dB Peak [mm]		5.7

Measurement Results

	Area Scan	Zoom Scan
psSAR1g [W/Kg]	0.785	0.817
psSAR10g [W/Kg]	0.345	0.321
Power Drift [dB]	N/A	-0.15



Measurement Report for Band 53: LTE-TDD (SC-FDMA, 50% RB, 10 MHz, QPSK, UL Subframe=2,3,4,7,8,9) RBPosition:Mid AntennaCfg:SISO, EDGE LEFT

Exposure Conditions

Band	Band 53	TSL Permittivity	37.4
Frequency [MHz] Channel Number	2489.200 60197	TSL Conductivity [S/m]	1.82
Group UID	LTE-TDD 10488-AAG	Phantom Section TSL	Flat HSL
Conversion Factor	7.33	Test Distance [mm]	5.00

Hardware Setup

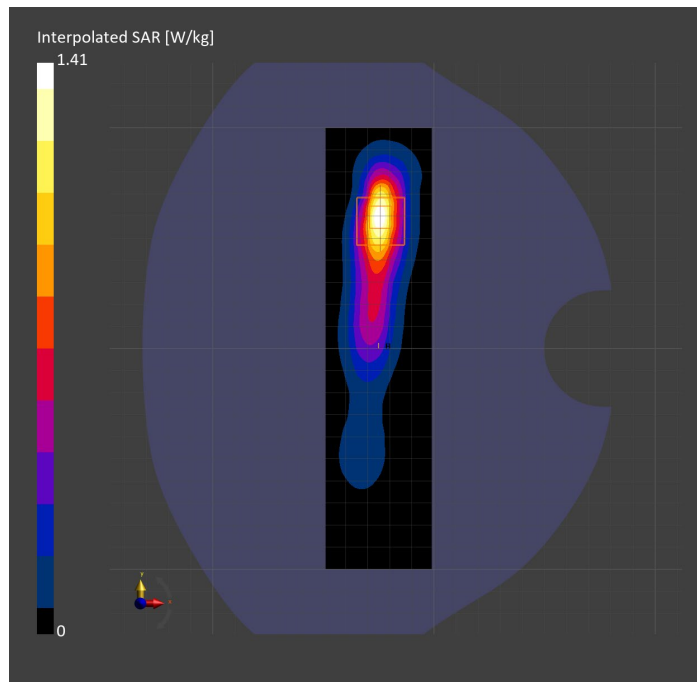
Probe Calibration Date	EX3DV4 - SN3772 2023-02-13	Phantom	Twin-SAM V8.0 (30deg probe tilt)
DAE Calibration Date	DAE4 Sn1359 2023-01-24	TSL Type	HBBL-600-10000
Software Version	16.2.4.2524		

Scan Setup

	Area Scan	Zoom Scan
Grid Extents [mm]	48.0 x 200.0	30.0 x 30.0 x 30.0
Grid Steps [mm]	8.0 x 10.0	5.0 x 5.0 x 1.5
Sensor Surface [mm]	3.0	1.4
Graded Grid	N/A	Yes
M2/M1 [%]		77.8
Dist 3dB Peak [mm]		7.0

Measurement Results

	Area Scan	Zoom Scan
psSAR1g [W/Kg]	0.639	0.623
psSAR10g [W/Kg]	0.279	0.268
Power Drift [dB]	N/A	0.01



Measurement Report for Band 66: LTE-FDD (SC-FDMA, 50% RB, 20 MHz, QPSK) RBPosition:Mid AntennaCfg:SISO, EDGE BOTTOM

Exposure Conditions

Band	Band 66	TSL Permittivity	40.1
Frequency [MHz] Channel Number	1720.000 132072	TSL Conductivity [S/m]	1.30
Group UID	LTE-FDD 10297-AAE	Phantom Section TSL	Flat HSL
Conversion Factor	8.98	Test Distance [mm]	5.00

Hardware Setup

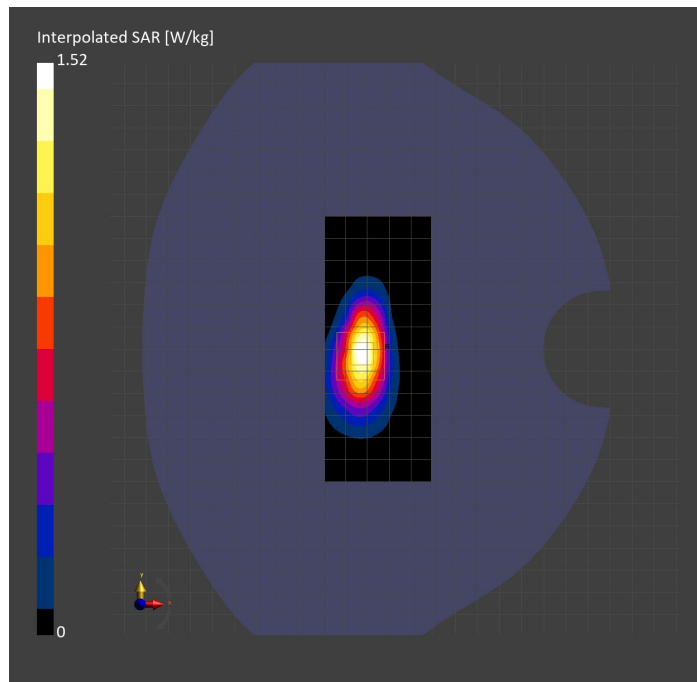
Probe Calibration Date	EX3DV4 - SN3989 2023-01-26	Phantom	Twin-SAM V8.0 (30deg probe tilt)
DAE Calibration Date	DAE4 Sn1257 2022-09-20	TSL Type	HBBL-600-10000
Software Version	16.2.4.2524		

Scan Setup

	Area Scan	Zoom Scan
Grid Extents [mm]	48.0 x 120.0	30.0 x 30.0 x 30.0
Grid Steps [mm]	8.0 x 15.0	6.0 x 6.0 x 1.5
Sensor Surface [mm]	3.0	1.4
Graded Grid	N/A	Yes
M2/M1 [%]		80.7
Dist 3dB Peak [mm]		8.4

Measurement Results

	Area Scan	Zoom Scan
psSAR1g [W/Kg]	0.785	0.778
psSAR10g [W/Kg]	0.388	0.384
Power Drift [dB]	N/A	0.01



Measurement Report for Band 66: LTE-FDD (SC-FDMA, 1 RB, 20 MHz, QPSK) RBPosition:Mid AntennaCfg:SISO, CHEEK

Exposure Conditions

Band	Band 66	TSL Permittivity	40.1
Frequency [MHz] Channel Number	1770.000 132572	TSL Conductivity [S/m]	1.35
Group UID	LTE-FDD 10169-CAF	Phantom Section TSL	RightHead HSL
Conversion Factor	8.66	Test Distance [mm]	0.00

Hardware Setup

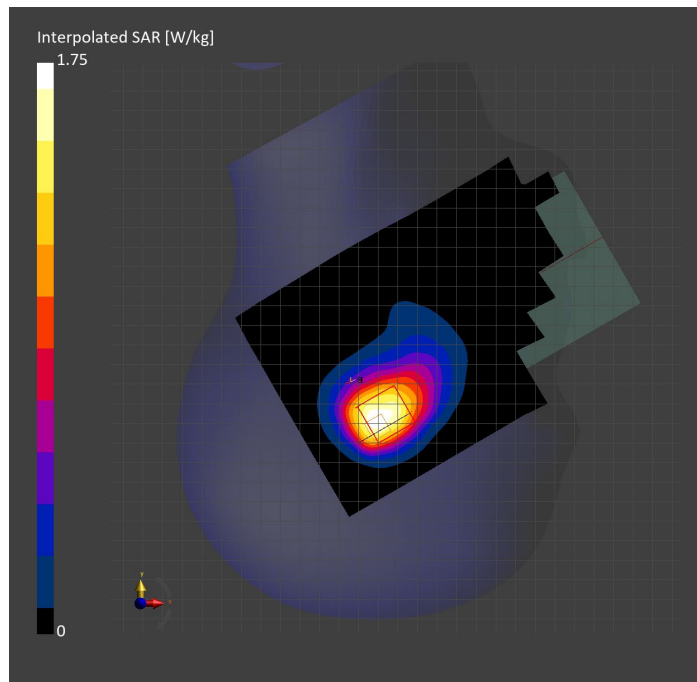
Probe Calibration Date	EX3DV4 - SN7569 2023-04-18	Phantom	Twin-SAM V8.0 (30deg probe tilt)
DAE Calibration Date	DAE4 Sn1547 2023-04-18	TSL Type	HBBL-600-10000
Software Version	16.2.4.2524		

Scan Setup

	Area Scan	Zoom Scan
Grid Extents [mm]	120.0 x 210.0	30.0 x 30.0 x 30.0
Grid Steps [mm]	15.0 x 15.0	6.0 x 6.0 x 1.5
Sensor Surface [mm]	3.0	1.4
Graded Grid	N/A	Yes
M2/M1 [%]		71.7
Dist 3dB Peak [mm]		6.8

Measurement Results

	Area Scan	Zoom Scan
psSAR1g [W/Kg]	0.805	0.744
psSAR10g [W/Kg]	0.470	0.436
Power Drift [dB]	N/A	-0.05



Measurement Report for Band 66: LTE-FDD (SC-FDMA, 1 RB, 20 MHz, QPSK) RBPosition:Mid AntennaCfg:SISO, BACK

Exposure Conditions

Band	Band 66	TSL Permittivity	40.0
Frequency [MHz] Channel Number	1770.000 132572	TSL Conductivity [S/m]	1.32
Group UID	LTE-FDD 10169-CAF	Phantom Section TSL	Flat HSL
Conversion Factor	8.98	Test Distance [mm]	5.00

Hardware Setup

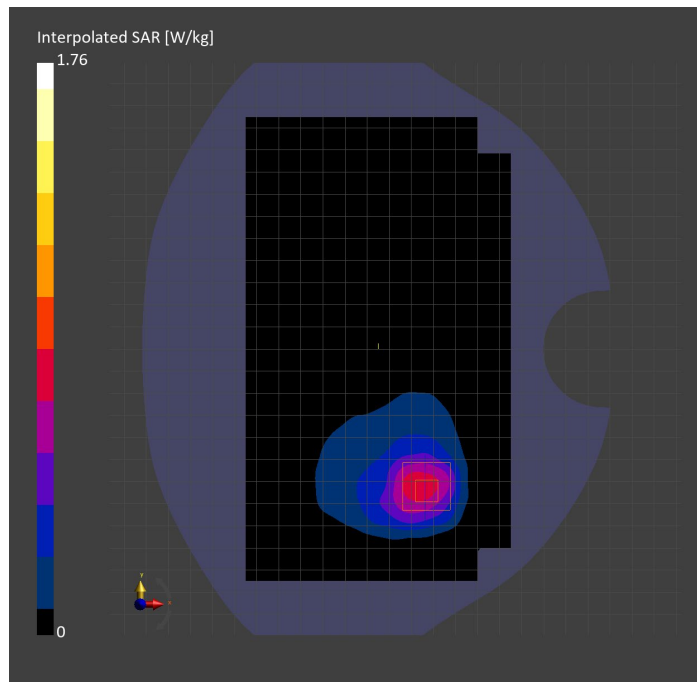
Probe Calibration Date	EX3DV4 - SN3989 2023-01-26	Phantom	Twin-SAM V8.0 (30deg probe tilt)
DAE Calibration Date	DAE4 Sn1257 2022-09-20	TSL Type	HBBL-600-10000
Software Version	16.2.4.2524		

Scan Setup

	Area Scan	Zoom Scan
Grid Extents [mm]	120.0 x 210.0	30.0 x 30.0 x 30.0
Grid Steps [mm]	15.0 x 15.0	6.0 x 6.0 x 1.5
Sensor Surface [mm]	3.0	1.4
Graded Grid	N/A	Yes
M2/M1 [%]		79.5
Dist 3dB Peak [mm]		10.3

Measurement Results

	Area Scan	Zoom Scan
psSAR1g [W/Kg]	0.691	0.854
psSAR10g [W/Kg]	0.395	0.414
Power Drift [dB]	N/A	-0.01



Measurement Report for Band 71: LTE-FDD (SC-FDMA, 1 RB, 20 MHz, QPSK) RBPosition:Mid AntennaCfg:SISO, EDGE RIGHT

Exposure Conditions

Band	Band 71	TSL Permittivity	42.2
Frequency [MHz] Channel Number	680.500 133297	TSL Conductivity [S/m]	0.856
Group UID	LTE-FDD 10169-CAF	Phantom Section TSL	Flat HSL
Conversion Factor	10.62	Test Distance [mm]	5.00

Hardware Setup

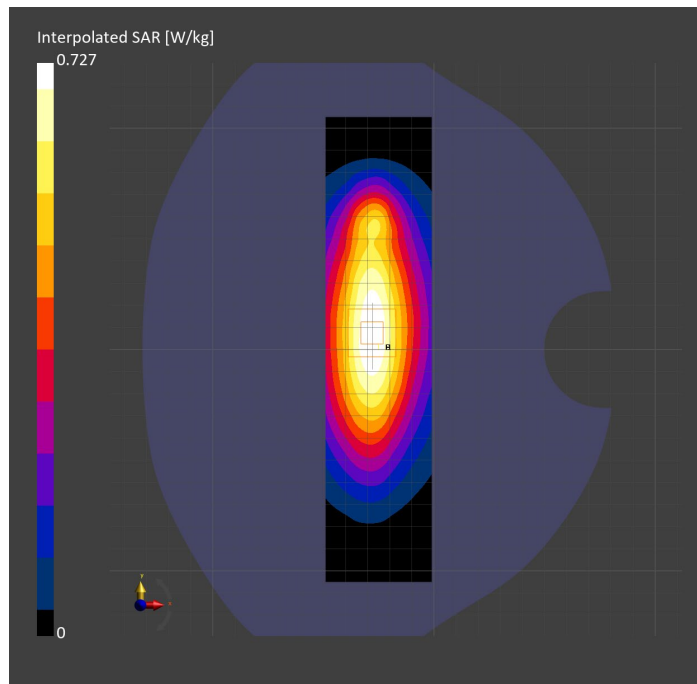
Probe Calibration Date	EX3DV4 - SN7589 2023-04-18	Phantom	Twin-SAM V5.0 (30deg probe tilt)
DAE Calibration Date	DAE4 Sn1544 2023-01-24	TSL Type	HBBL-600-10000
Software Version	16.2.4.2524		

Scan Setup

	Area Scan	Zoom Scan
Grid Extents [mm]	48.0 x 210.0	30.0 x 30.0 x 30.0
Grid Steps [mm]	8.0 x 15.0	6.0 x 6.0 x 1.5
Sensor Surface [mm]	3.0	1.4
Graded Grid	N/A	Yes
M2/M1 [%]		86.2
Dist 3dB Peak [mm]		> 15.0

Measurement Results

	Area Scan	Zoom Scan
psSAR1g [W/Kg]	0.456	0.464
psSAR10g [W/Kg]	0.307	0.311
Power Drift [dB]	N/A	-0.00



Measurement Report for Band 71: LTE-FDD (SC-FDMA, 1 RB, 20 MHz, QPSK) RBPosition:Mid AntennaCfg:SISO, CHEEK

Exposure Conditions

Band	Band 71	TSL Permittivity	41.7
Frequency [MHz] Channel Number	680.500 133297	TSL Conductivity [S/m]	0.889
Group UID	LTE-FDD 10169-CAF	Phantom Section TSL	RightHead HSL
Conversion Factor	8.93	Test Distance [mm]	0.00

Hardware Setup

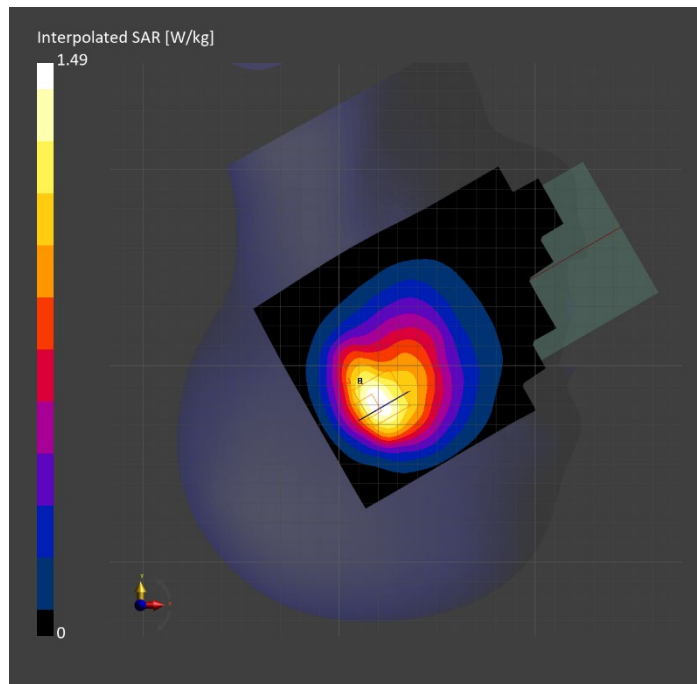
Probe Calibration Date	EX3DV4 - SN7448 2023-02-14	Phantom	Twin-SAM V5.0 (30deg probe tilt)
DAE Calibration Date	DAE4 Sn1472 2023-01-23	TSL Type	HBBL-600-10000
Software Version	16.2.4.2524		

Scan Setup

	Area Scan	Zoom Scan
Grid Extents [mm]	120.0 x 210.0	30.0 x 30.0 x 30.0
Grid Steps [mm]	15.0 x 15.0	6.0 x 6.0 x 1.5
Sensor Surface [mm]	3.0	1.4
Graded Grid	N/A	Yes
M2/M1 [%]		71.8
Dist 3dB Peak [mm]		7.1

Measurement Results

	Area Scan	Zoom Scan
psSAR1g [W/Kg]	0.638	0.651
psSAR10g [W/Kg]	0.418	0.401
Power Drift [dB]	N/A	-0.04



Measurement Report for Band 71: LTE-FDD (SC-FDMA, 1 RB, 20 MHz, QPSK) RBPosition:Mid AntennaCfg:SISO, BACK

Exposure Conditions

Band	Band 71	TSL Permittivity	41.7
Frequency [MHz] Channel Number	680.500 133297	TSL Conductivity [S/m]	0.889
Group UID	LTE-FDD 10169-CAF	Phantom Section TSL	Flat HSL
Conversion Factor	8.93	Test Distance [mm]	5.00

Hardware Setup

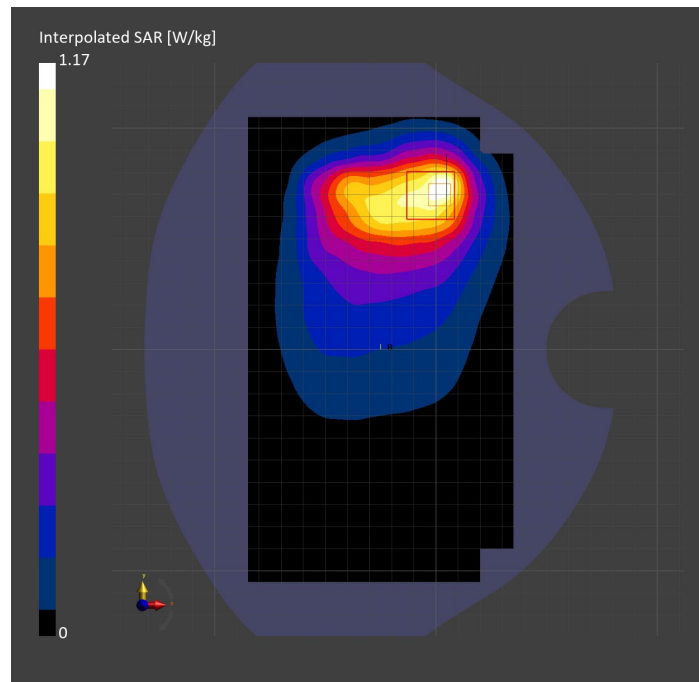
Probe Calibration Date	EX3DV4 - SN7448 2023-02-14	Phantom	Twin-SAM V5.0 (30deg probe tilt)
DAE Calibration Date	DAE4 Sn1472 2023-01-23	TSL Type	HBBL-600-10000
Software Version	16.2.4.2524		

Scan Setup

	Area Scan	Zoom Scan
Grid Extents [mm]	120.0 x 210.0	30.0 x 30.0 x 30.0
Grid Steps [mm]	15.0 x 15.0	6.0 x 6.0 x 1.5
Sensor Surface [mm]	3.0	1.4
Graded Grid	N/A	Yes
M2/M1 [%]		77.5
Dist 3dB Peak [mm]		11.1

Measurement Results

	Area Scan	Zoom Scan
psSAR1g [W/Kg]	0.591	0.552
psSAR10g [W/Kg]	0.384	0.322
Power Drift [dB]	N/A	0.03



Measurement Report for Band n5: 5G NR (DFT-s-OFDM, 50% RB, 20 MHz, QPSK, 15 kHz) RBPosition:Mid AntennaCfg:SISO, CHEEK

Exposure Conditions

Band	Band n5	TSL Permittivity	40.6
Frequency [MHz] Channel Number	836.500 167300	TSL Conductivity [S/m]	0.868
Group UID	5G NR FR1 FDD 10939-AAC	Phantom Section TSL	RightHead HSL
Conversion Factor	7.83	Test Distance [mm]	0.00

Hardware Setup

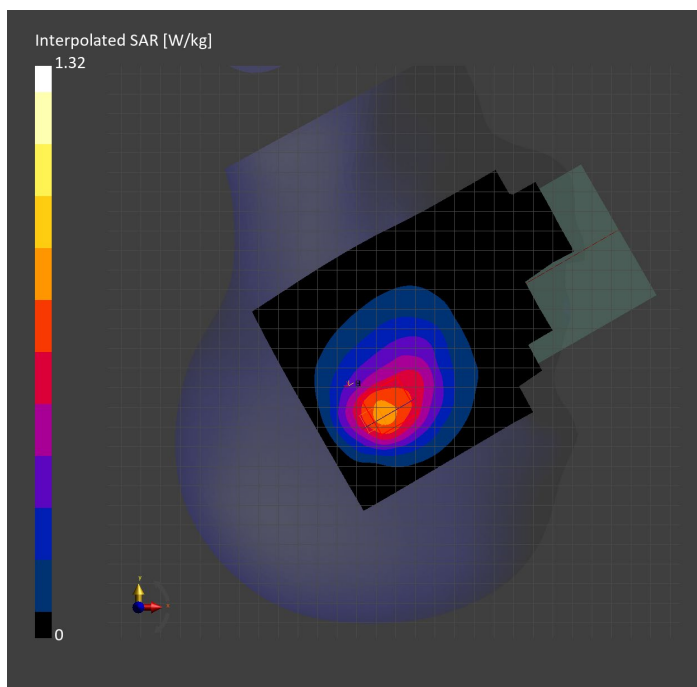
Probe Calibration Date	EX3DV4 - SN3749 2023-01-27	Phantom	Twin-SAM V8.0 (30deg probe tilt)
DAE Calibration Date	DAE4 Sn1357 2023-01-27	TSL Type	HBBL-600-10000
Software Version	16.2.4.2524		

Scan Setup

	Area Scan	Zoom Scan
Grid Extents [mm]	120.0 x 210.0	30.0 x 30.0 x 30.0
Grid Steps [mm]	15.0 x 15.0	6.0 x 6.0 x 1.5
Sensor Surface [mm]	3.0	1.4
Graded Grid	N/A	Yes
M2/M1 [%]		87.0
Dist 3dB Peak [mm]		12.5

Measurement Results

	Area Scan	Zoom Scan
psSAR1g [W/Kg]	0.702	0.746
psSAR10g [W/Kg]	0.460	0.487
Power Drift [dB]	N/A	-0.01



Measurement Report for Band n5: 5G NR (DFT-s-OFDM, 1 RB, 20 MHz, QPSK, 15 kHz) RBPosition:Mid AntennaCfg:SISO, BACK

Exposure Conditions

Band	Band n5	TSL Permittivity	40.6
Frequency [MHz] Channel Number	836.500 167300	TSL Conductivity [S/m]	0.868
Group UID	5G NR FR1 FDD 10931-AAC	Phantom Section TSL	Flat HSL
Conversion Factor	7.83	Test Distance [mm]	5.00

Hardware Setup

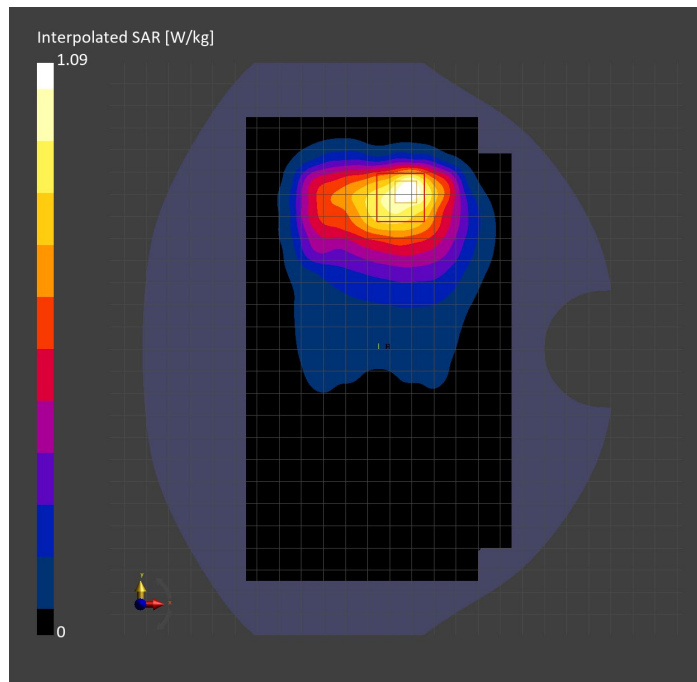
Probe Calibration Date	EX3DV4 - SN3749 2023-01-27	Phantom	Twin-SAM V8.0 (30deg probe tilt)
DAE Calibration Date	DAE4 Sn1357 2023-01-27	TSL Type	HBBL-600-10000
Software Version	16.2.4.2524		

Scan Setup

	Area Scan	Zoom Scan
Grid Extents [mm]	120.0 x 210.0	30.0 x 30.0 x 30.0
Grid Steps [mm]	15.0 x 15.0	6.0 x 6.0 x 1.5
Sensor Surface [mm]	3.0	1.4
Graded Grid	N/A	Yes
M2/M1 [%]		82.4
Dist 3dB Peak [mm]		8.8

Measurement Results

	Area Scan	Zoom Scan
psSAR1g [W/Kg]	0.660	0.647
psSAR10g [W/Kg]	0.420	0.396
Power Drift [dB]	N/A	-0.08



Measurement Report for Band n5: 5G NR (DFT-s-OFDM, 50% RB, 20 MHz, QPSK, 15 kHz) RBPosition:Mid AntennaCfg:SISO, EDGE BOTTOM

Exposure Conditions

Band	Band n5	TSL Permittivity	42.1
Frequency [MHz] Channel Number	836.500 167300	TSL Conductivity [S/m]	0.898
Group UID	5G NR FR1 FDD 10939-AAC	Phantom Section TSL	Flat HSL
Conversion Factor	8.76	Test Distance [mm]	5.00

Hardware Setup

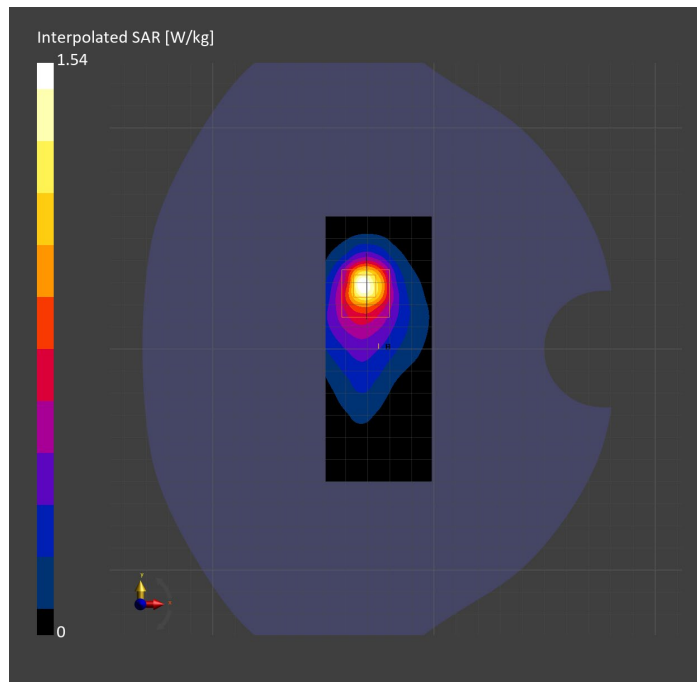
Probe Calibration Date	EX3DV4 - SN7806 2023-04-04	Phantom	Twin-SAM V8.0 (30deg probe tilt)
DAE Calibration Date	DAE4 Sn1784 2023-04-03	TSL Type	HBBL-600-10000
Software Version	16.2.4.2524		

Scan Setup

	Area Scan	Zoom Scan
Grid Extents [mm]	48.0 x 120.0	30.0 x 30.0 x 30.0
Grid Steps [mm]	8.0 x 15.0	6.0 x 6.0 x 1.5
Sensor Surface [mm]	3.0	1.4
Graded Grid	N/A	Yes
M2/M1 [%]		55.1
Dist 3dB Peak [mm]		7.3

Measurement Results

	Area Scan	Zoom Scan
psSAR1g [W/Kg]	0.382	0.412
psSAR10g [W/Kg]	0.198	0.168
Power Drift [dB]	N/A	-0.05



Measurement Report for Band n7: 5G NR (DFT-s-OFDM, 50% RB, 40 MHz, QPSK, 15 kHz) RBPosition:Mid AntennaCfg:SISO, EDGE RIGHT

Exposure Conditions

Band	Band n7	TSL Permittivity	40.3
Frequency [MHz] Channel Number	2535.000 507000	TSL Conductivity [S/m]	1.85
Group UID	5G NR FR1 FDD 10942-AAC	Phantom Section TSL	Flat HSL
Conversion Factor	7.33	Test Distance [mm]	5.00

Hardware Setup

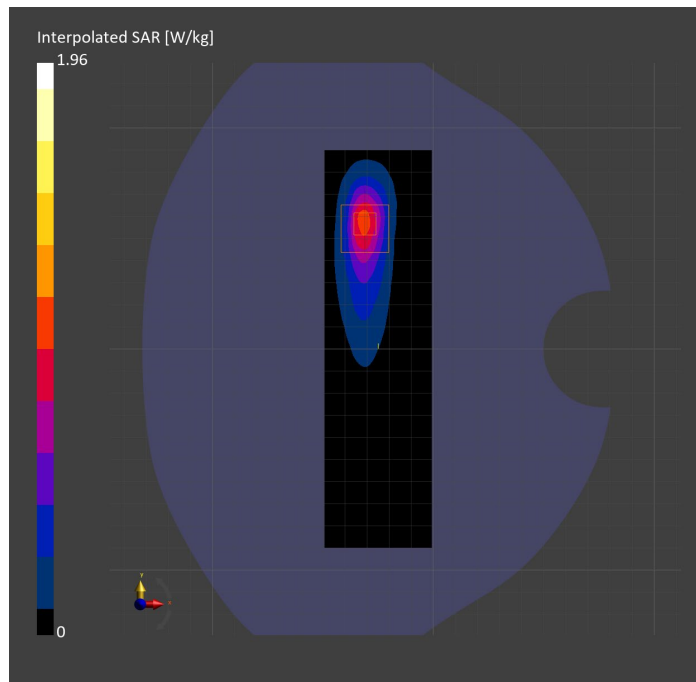
Probe Calibration Date	EX3DV4 - SN7808 2023-04-18	Phantom	Twin-SAM V8.0 (30deg probe tilt)
DAE Calibration Date	DAE4 Sn1796 2023-04-03	TSL Type	HBBL-600-10000
Software Version	16.2.4.2524		

Scan Setup

	Area Scan	Zoom Scan
Grid Extents [mm]	48.6 x 180.0	30.0 x 30.0 x 30.0
Grid Steps [mm]	8.1 x 10.0	5.0 x 5.0 x 1.5
Sensor Surface [mm]	3.0	1.4
Graded Grid	N/A	Yes
M2/M1 [%]		75.0
Dist 3dB Peak [mm]		7.0

Measurement Results

	Area Scan	Zoom Scan
psSAR1g [W/Kg]	0.790	0.808
psSAR10g [W/Kg]	0.344	0.344
Power Drift [dB]	N/A	-0.01



Measurement Report for Band n7: 5G NR (DFT-s-OFDM, 50% RB, 40 MHz, QPSK, 15 kHz) RBPosition:Mid AntennaCfg:SISO, CHEEK

Exposure Conditions

Band	Band n7	TSL Permittivity	38.0
Frequency [MHz] Channel Number	2535.000 507000	TSL Conductivity [S/m]	1.92
Group UID	5G NR FR1 FDD 10942-AAC	Phantom Section TSL	RightHead HSL
Conversion Factor	7.32	Test Distance [mm]	0.00

Hardware Setup

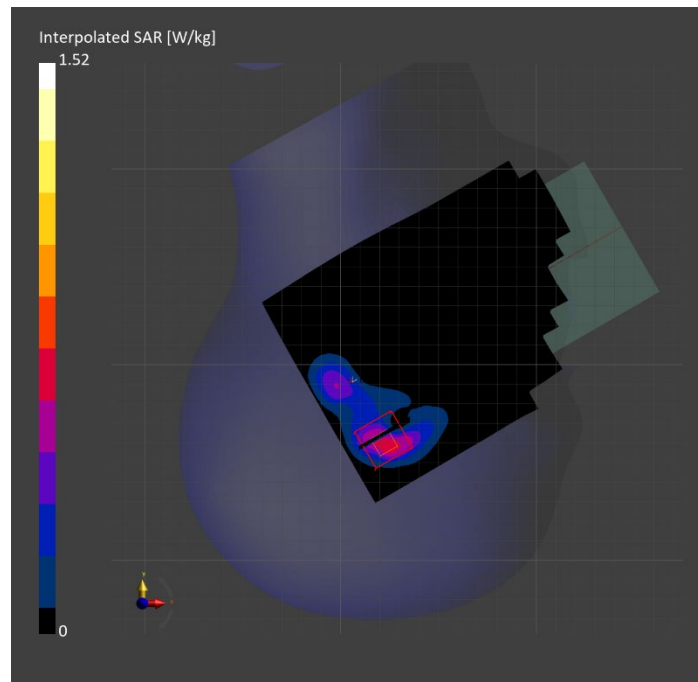
Probe Calibration Date	EX3DV4 - SN3885 2022-09-20	Phantom	Twin-SAM V5.0 (30deg probe tilt)
DAE Calibration Date	DAE4 Sn1548 2023-02-14	TSL Type	HBBL-600-10000
Software Version	16.2.4.2524		

Scan Setup

	Area Scan	Zoom Scan
Grid Extents [mm]	120.0 x 200.0	30.0 x 30.0 x 30.0
Grid Steps [mm]	10.0 x 10.0	5.0 x 5.0 x 1.5
Sensor Surface [mm]	3.0	1.4
Graded Grid	N/A	Yes
M2/M1 [%]		74.6
Dist 3dB Peak [mm]		5.7

Measurement Results

	Area Scan	Zoom Scan
psSAR1g [W/Kg]	0.532	0.595
psSAR10g [W/Kg]	0.231	0.236
Power Drift [dB]	N/A	0.02



Measurement Report for Band n7: 5G NR (DFT-s-OFDM, 1 RB, 40 MHz, QPSK, 15 kHz) RBPosition:Mid AntennaCfg:SISO, BACK

Exposure Conditions

Band	Band n7	TSL Permittivity	38.7
Frequency [MHz] Channel Number	2535.000 507000	TSL Conductivity [S/m]	1.95
Group UID	5G NR FR1 FDD 10934-AAC	Phantom Section TSL	Flat HSL
Conversion Factor	7.32	Test Distance [mm]	5.00

Hardware Setup

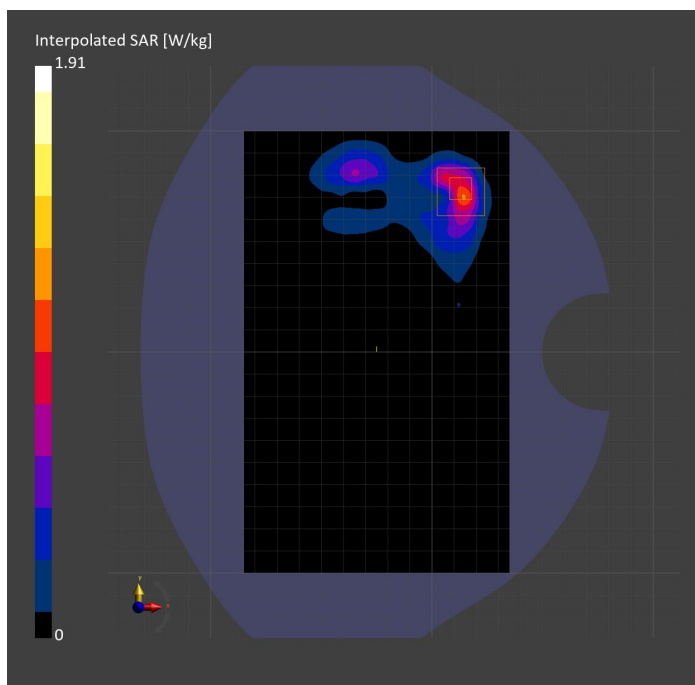
Probe Calibration Date	EX3DV4 - SN3885 2022-09-20	Phantom	Twin-SAM V5.0 (30deg probe tilt)
DAE Calibration Date	DAE4 Sn1548 2023-02-14	TSL Type	HBBL-600-10000
Software Version	16.2.4.2524		

Scan Setup

	Area Scan	Zoom Scan
Grid Extents [mm]	120.0 x 200.0	30.0 x 30.0 x 30.0
Grid Steps [mm]	10.0 x 10.0	5.0 x 5.0 x 1.5
Sensor Surface [mm]	3.0	1.4
Graded Grid	N/A	Yes
M2/M1 [%]		78.2
Dist 3dB Peak [mm]		6.5

Measurement Results

	Area Scan	Zoom Scan
psSAR1g [W/Kg]	0.760	0.803
psSAR10g [W/Kg]	0.329	0.315
Power Drift [dB]	N/A	0.02



Measurement Report for Band n12: 5G NR (DFT-s-OFDM, 50% RB, 15 MHz, QPSK, 15 kHz) RBPosition:Mid AntennaCfg:SISO, EDGE RIGHT

Exposure Conditions

Band	Band n12	TSL Permittivity	42.1
Frequency [MHz] Channel Number	707.500 141500	TSL Conductivity [S/m]	0.863
Group UID	5G NR FR1 FDD 10938-AAC	Phantom Section TSL	Flat HSL
Conversion Factor	10.62	Test Distance [mm]	5.00

Hardware Setup

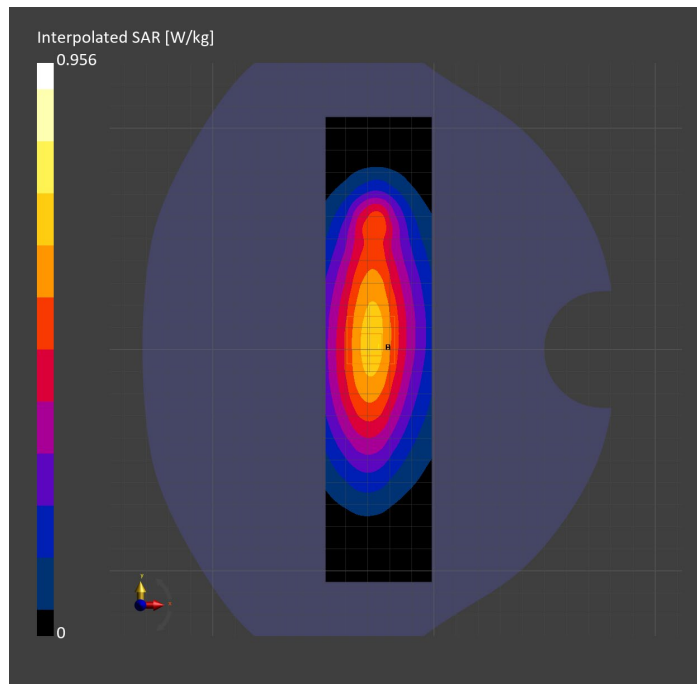
Probe Calibration Date	EX3DV4 - SN7589 2023-04-18	Phantom	Twin-SAM V5.0 (30deg probe tilt)
DAE Calibration Date	DAE4 Sn1544 2023-01-24	TSL Type	HBBL-600-10000
Software Version	16.2.4.2524		

Scan Setup

	Area Scan	Zoom Scan
Grid Extents [mm]	48.0 x 210.0	30.0 x 30.0 x 30.0
Grid Steps [mm]	8.0 x 15.0	6.0 x 6.0 x 1.5
Sensor Surface [mm]	3.0	1.4
Graded Grid	N/A	Yes
M2/M1 [%]		84.7
Dist 3dB Peak [mm]		> 15.0

Measurement Results

	Area Scan	Zoom Scan
psSAR1g [W/Kg]	0.593	0.601
psSAR10g [W/Kg]	0.399	0.403
Power Drift [dB]	N/A	0.04



Measurement Report for Band n12: 5G NR (DFT-s-OFDM, 1 RB, 15 MHz, QPSK, 15 kHz) RBPosition:Mid AntennaCfg:SISO, CHEEK

Exposure Conditions

Band	Band n12	TSL Permittivity	41.0
Frequency [MHz] Channel Number	707.500 141500	TSL Conductivity [S/m]	0.860
Group UID	5G NR FR1 FDD 10930-AAC	Phantom Section TSL	RightHead HSL
Conversion Factor	8.93	Test Distance [mm]	0.00

Hardware Setup

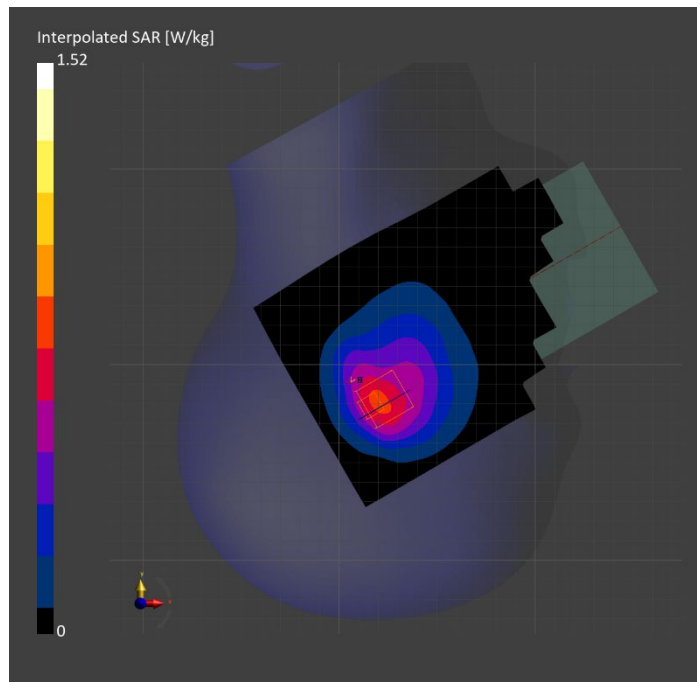
Probe Calibration Date	EX3DV4 - SN7448 2023-02-14	Phantom	Twin-SAM V5.0 (30deg probe tilt)
DAE Calibration Date	DAE4 Sn1472 2023-01-23	TSL Type	HBBL-600-10000
Software Version	16.2.4.2524		

Scan Setup

	Area Scan	Zoom Scan
Grid Extents [mm]	120.0 x 210.0	30.0 x 30.0 x 30.0
Grid Steps [mm]	15.0 x 15.0	6.0 x 6.0 x 1.5
Sensor Surface [mm]	3.0	1.4
Graded Grid	N/A	Yes
M2/M1 [%]		74.1
Dist 3dB Peak [mm]		8.7

Measurement Results

	Area Scan	Zoom Scan
psSAR1g [W/Kg]	0.690	0.701
psSAR10g [W/Kg]	0.451	0.438
Power Drift [dB]	N/A	-0.01



Measurement Report for Band n12: 5G NR (DFT-s-OFDM, 1 RB, 15 MHz, QPSK, 15 kHz) RBPosition:Mid AntennaCfg:SISO, BACK

Exposure Conditions

Band	Band n12	TSL Permittivity	41.0
Frequency [MHz] Channel Number	707.500 141500	TSL Conductivity [S/m]	0.860
Group UID	5G NR FR1 FDD 10930-AAC	Phantom Section TSL	Flat HSL
Conversion Factor	8.93	Test Distance [mm]	5.00

Hardware Setup

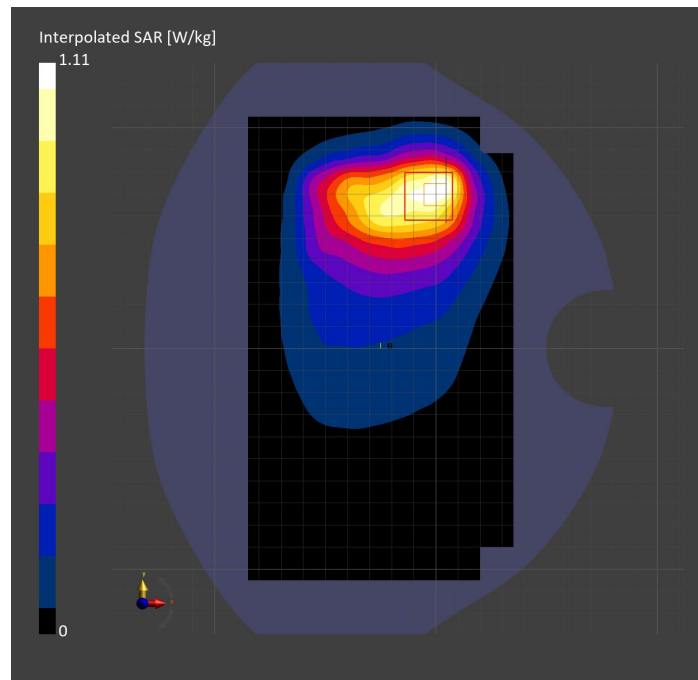
Probe Calibration Date	EX3DV4 - SN7448 2023-02-14	Phantom	Twin-SAM V5.0 (30deg probe tilt)
DAE Calibration Date	DAE4 Sn1472 2023-01-23	TSL Type	HBBL-600-10000
Software Version	16.2.4.2524		

Scan Setup

	Area Scan	Zoom Scan
Grid Extents [mm]	120.0 x 210.0	30.0 x 30.0 x 30.0
Grid Steps [mm]	15.0 x 15.0	6.0 x 6.0 x 1.5
Sensor Surface [mm]	3.0	1.4
Graded Grid	N/A	Yes
M2/M1 [%]		75.4
Dist 3dB Peak [mm]		12.0

Measurement Results

	Area Scan	Zoom Scan
psSAR1g [W/Kg]	0.584	0.538
psSAR10g [W/Kg]	0.385	0.322
Power Drift [dB]	N/A	-0.07



Measurement Report for Band n14: 5G NR (DFT-s-OFDM, 50% RB, 10 MHz, QPSK, 15 kHz) RBPosition:Mid AntennaCfg:SISO, EDGE RIGHT

Exposure Conditions

Band	Band n14	TSL Permittivity	41.8
Frequency [MHz] Channel Number	793.000 158600	TSL Conductivity [S/m]	0.892
Group UID	5G NR FR1 FDD 10937-AAD	Phantom Section TSL	Flat HSL
Conversion Factor	10.62	Test Distance [mm]	5.00

Hardware Setup

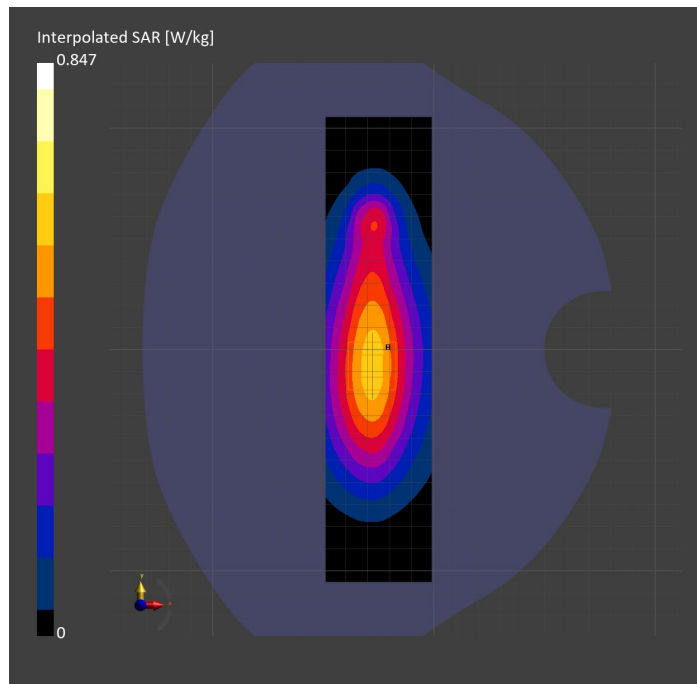
Probe Calibration Date	EX3DV4 - SN7589 2023-04-18	Phantom	Twin-SAM V5.0 (30deg probe tilt)
DAE Calibration Date	DAE4 Sn1544 2023-01-24	TSL Type	HBBL-600-10000
Software Version	16.2.4.2524		

Scan Setup

	Area Scan	Zoom Scan
Grid Extents [mm]	48.0 x 210.0	30.0 x 30.0 x 30.0
Grid Steps [mm]	8.0 x 15.0	6.0 x 6.0 x 1.5
Sensor Surface [mm]	3.0	1.4
Graded Grid	N/A	Yes
M2/M1 [%]		85.2
Dist 3dB Peak [mm]		21.3

Measurement Results

	Area Scan	Zoom Scan
psSAR1g [W/Kg]	0.527	0.534
psSAR10g [W/Kg]	0.350	0.354
Power Drift [dB]	N/A	-0.01



Measurement Report for Band n14: 5G NR (DFT-s-OFDM, 50% RB, 10 MHz, QPSK, 15 kHz) RBPosition:Mid AntennaCfg:SISO, CHEEK

Exposure Conditions

Band	Band n14	TSL Permittivity	41.2
Frequency [MHz] Channel Number	793.000 158600	TSL Conductivity [S/m]	0.889
Group UID	5G NR FR1 FDD 10937-AAD	Phantom Section TSL	RightHead HSL
Conversion Factor	10.62	Test Distance [mm]	0.00

Hardware Setup

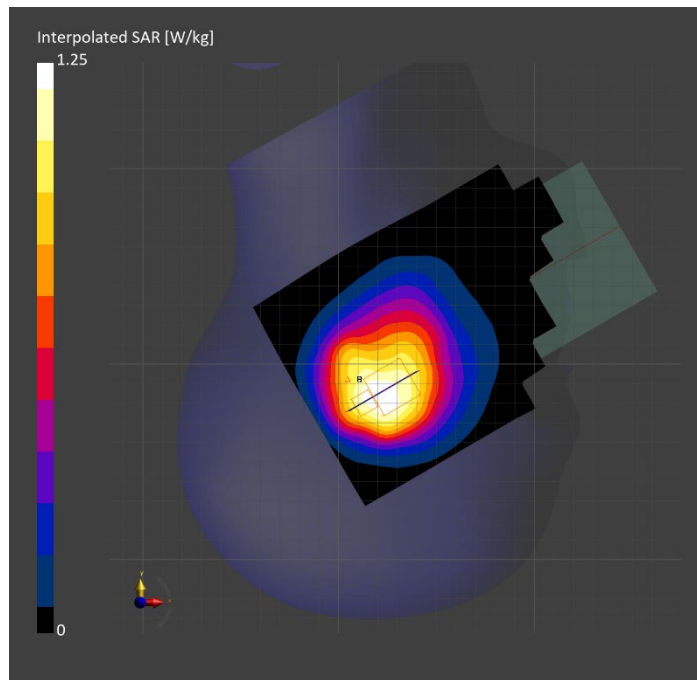
Probe Calibration Date	EX3DV4 - SN7589 2023-04-18	Phantom	Twin-SAM V5.0 (30deg probe tilt)
DAE Calibration Date	DAE4 Sn1544 2023-01-24	TSL Type	HBBL-600-10000
Software Version	16.2.4.2524		

Scan Setup

	Area Scan	Zoom Scan
Grid Extents [mm]	120.0 x 210.0	30.0 x 30.0 x 30.0
Grid Steps [mm]	15.0 x 15.0	6.0 x 6.0 x 1.5
Sensor Surface [mm]	3.0	1.4
Graded Grid	N/A	Yes
M2/M1 [%]		73.9
Dist 3dB Peak [mm]		11.1

Measurement Results

	Area Scan	Zoom Scan
psSAR1g [W/Kg]	0.605	0.603
psSAR10g [W/Kg]	0.413	0.418
Power Drift [dB]	N/A	0.01



Measurement Report for Band n14: 5G NR (DFT-s-OFDM, 1 RB, 10 MHz, QPSK, 15 kHz) RBPosition:Mid AntennaCfg:SISO, BACK

Exposure Conditions

Band	Band n14	TSL Permittivity	41.8
Frequency [MHz] Channel Number	793.000 158600	TSL Conductivity [S/m]	0.892
Group UID	5G NR FR1 FDD 10929-AAD	Phantom Section TSL	Flat HSL
Conversion Factor	10.62	Test Distance [mm]	5.00

Hardware Setup

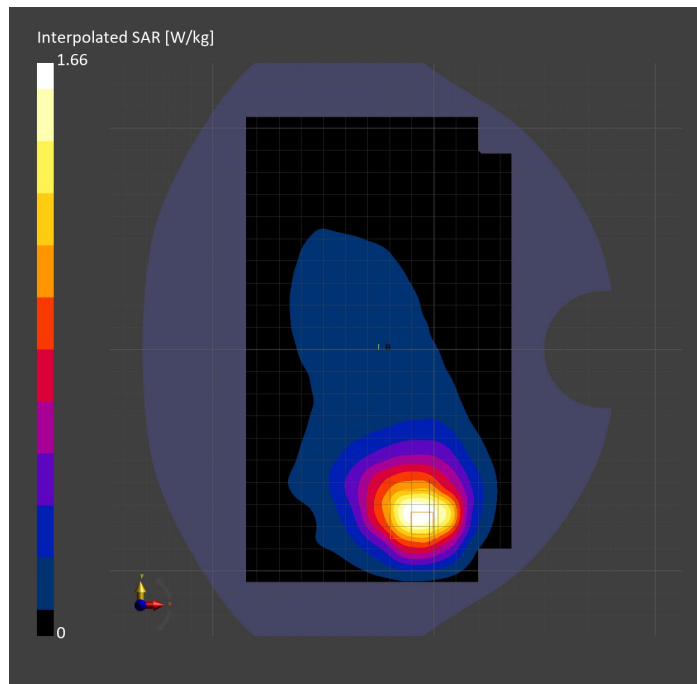
Probe Calibration Date	EX3DV4 - SN7589 2023-04-18	Phantom	Twin-SAM V5.0 (30deg probe tilt)
DAE Calibration Date	DAE4 Sn1544 2023-01-24	TSL Type	HBBL-600-10000
Software Version	16.2.4.2524		

Scan Setup

	Area Scan	Zoom Scan
Grid Extents [mm]	120.0 x 210.0	30.0 x 30.0 x 30.0
Grid Steps [mm]	15.0 x 15.0	6.0 x 6.0 x 1.5
Sensor Surface [mm]	3.0	1.4
Graded Grid	N/A	Yes
M2/M1 [%]		69.5
Dist 3dB Peak [mm]		8.7

Measurement Results

	Area Scan	Zoom Scan
psSAR1g [W/Kg]	0.710	0.676
psSAR10g [W/Kg]	0.444	0.372
Power Drift [dB]	N/A	-0.04



Measurement Report for Band n25: 5G NR (DFT-s-OFDM, 50% RB, 40 MHz, QPSK, 15 kHz) RBPosition:Mid AntennaCfg:SISO, BACK

Exposure Conditions

Band	Band n25	TSL Permittivity	40.0
Frequency [MHz] Channel Number	1882.500 376500	TSL Conductivity [S/m]	1.43
Group UID	5G NR FR1 FDD 10942-AAC	Phantom Section TSL	Flat HSL
Conversion Factor	7.53	Test Distance [mm]	5.00

Hardware Setup

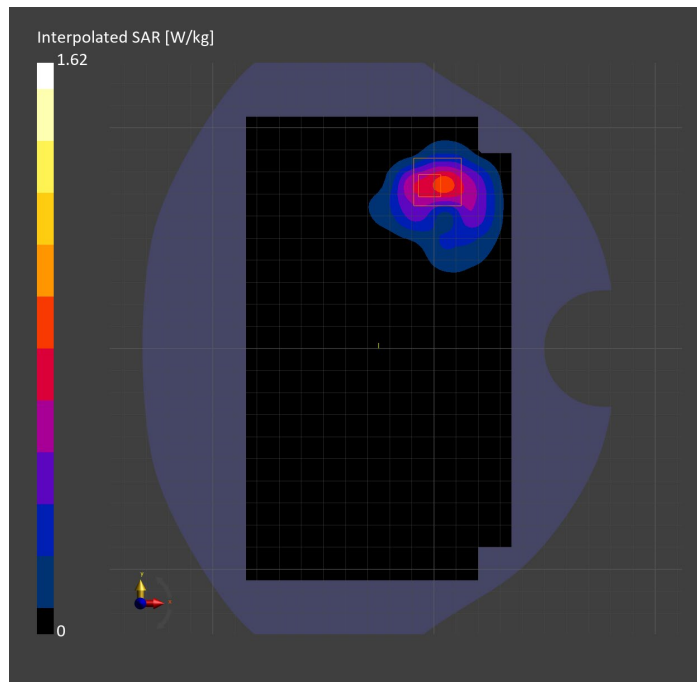
Probe Calibration Date	EX3DV4 - SN7807 2023-04-11	Phantom	Twin-SAM V8.0 (30deg probe tilt)
DAE Calibration Date	DAE4 Sn1799 2023-04-04	TSL Type	HBBL-600-10000
Software Version	16.2.4.2524		

Scan Setup

	Area Scan	Zoom Scan
Grid Extents [mm]	120.0 x 210.0	30.0 x 30.0 x 30.0
Grid Steps [mm]	15.0 x 15.0	6.0 x 6.0 x 1.5
Sensor Surface [mm]	3.0	1.4
Graded Grid	N/A	Yes
M2/M1 [%]		77.2
Dist 3dB Peak [mm]		8.1

Measurement Results

	Area Scan	Zoom Scan
psSAR1g [W/Kg]	0.680	0.748
psSAR10g [W/Kg]	0.355	0.345
Power Drift [dB]	N/A	0.04



Measurement Report for Band n25: 5G NR (DFT-s-OFDM, 1 RB, 40 MHz, QPSK, 15 kHz) RBPosition:Mid AntennaCfg:SISO, CHEEK

Exposure Conditions

Band	Band n25	TSL Permittivity	38.2
Frequency [MHz] Channel Number	1882.500 376500	TSL Conductivity [S/m]	1.39
Group UID	5G NR FR1 FDD 10934-AAC	Phantom Section TSL	LeftHead HSL
Conversion Factor	7.53	Test Distance [mm]	0.00

Hardware Setup

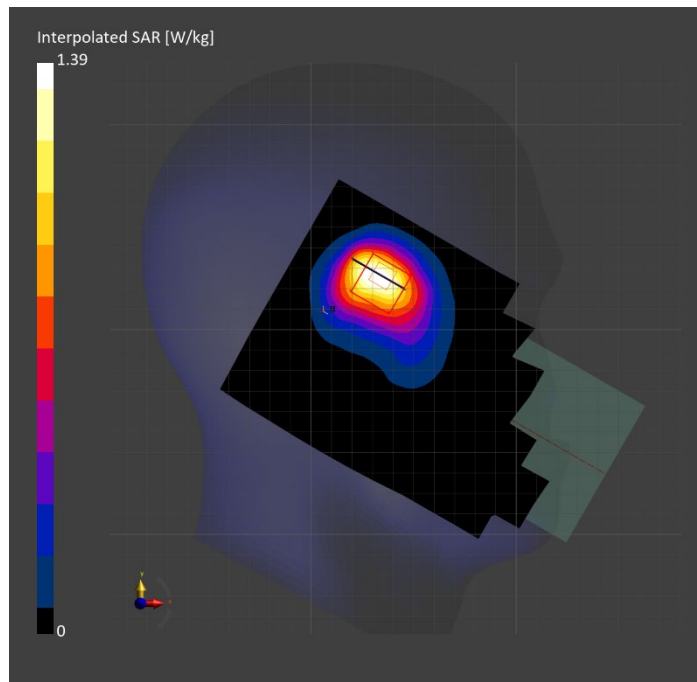
Probe Calibration Date	EX3DV4 - SN7807 2023-04-11	Phantom	Twin-SAM V8.0 (30deg probe tilt)
DAE Calibration Date	DAE4 Sn1799 2023-04-04	TSL Type	HBBL-600-10000
Software Version	16.2.4.2524		

Scan Setup

	Area Scan	Zoom Scan
Grid Extents [mm]	120.0 x 210.0	30.0 x 30.0 x 30.0
Grid Steps [mm]	15.0 x 15.0	6.0 x 6.0 x 1.5
Sensor Surface [mm]	3.0	1.4
Graded Grid	N/A	Yes
M2/M1 [%]		87.1
Dist 3dB Peak [mm]		8.5

Measurement Results

	Area Scan	Zoom Scan
psSAR1g [W/Kg]	0.761	0.750
psSAR10g [W/Kg]	0.430	0.421
Power Drift [dB]	N/A	-0.03



Measurement Report for Band n25: 5G NR (DFT-s-OFDM, 50% RB, 40 MHz, QPSK, 15 kHz) RBPosition:Mid AntennaCfg:SISO, EDGE RIGHT

Exposure Conditions

Band	Band n25	TSL Permittivity	38.2
Frequency [MHz] Channel Number	1882.500 376500	TSL Conductivity [S/m]	1.39
Group UID	5G NR FR1 FDD 10942-AAC	Phantom Section TSL	Flat HSL
Conversion Factor	7.53	Test Distance [mm]	5.00

Hardware Setup

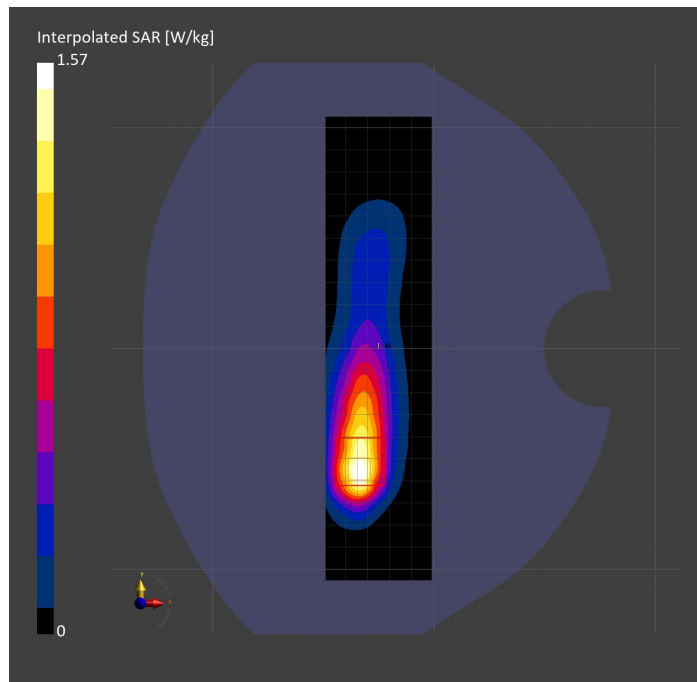
Probe Calibration Date	EX3DV4 - SN7807 2023-04-11	Phantom	Twin-SAM V8.0 (30deg probe tilt)
DAE Calibration Date	DAE4 Sn1799 2023-04-04	TSL Type	HBBL-600-10000
Software Version	16.2.4.2524		

Scan Setup

	Area Scan	Zoom Scan
Grid Extents [mm]	48.0 x 210.0	30.0 x 30.0 x 30.0
Grid Steps [mm]	8.0 x 15.0	6.0 x 6.0 x 1.5
Sensor Surface [mm]	3.0	1.4
Graded Grid	N/A	Yes
M2/M1 [%]		77.9
Dist 3dB Peak [mm]		8.5

Measurement Results

	Area Scan	Zoom Scan
psSAR1g [W/Kg]	0.748	0.731
psSAR10g [W/Kg]	0.381	0.365
Power Drift [dB]	N/A	0.02



Measurement Report for Band n26: 5G NR (DFT-s-OFDM, 1 RB, 20 MHz, QPSK, 15 kHz) RBPosition:Mid AntennaCfg:SISO, BACK

Exposure Conditions

Band	Band n26	TSL Permittivity	41.4
Frequency [MHz] Channel Number	831.500 166300	TSL Conductivity [S/m]	0.872
Group UID	5G NR FR1 FDD 10931-AAC	Phantom Section TSL	Flat HSL
Conversion Factor	8.76	Test Distance [mm]	5.00

Hardware Setup

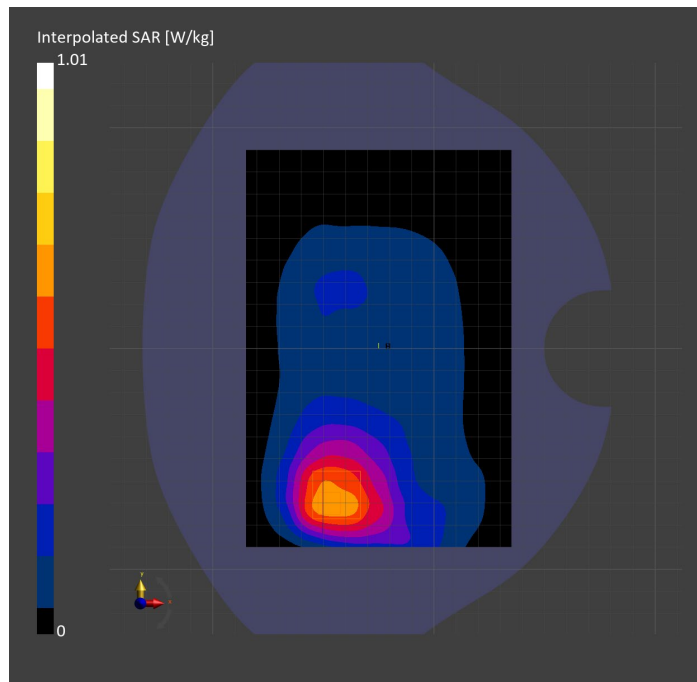
Probe Calibration Date	EX3DV4 - SN7806 2023-04-04	Phantom	Twin-SAM V8.0 (30deg probe tilt)
DAE Calibration Date	DAE4 Sn1784 2023-04-03	TSL Type	HBBL-600-10000
Software Version	16.2.4.2524		

Scan Setup

	Area Scan	Zoom Scan
Grid Extents [mm]	120.0 x 180.0	30.0 x 30.0 x 30.0
Grid Steps [mm]	15.0 x 15.0	6.0 x 6.0 x 1.5
Sensor Surface [mm]	3.0	1.4
Graded Grid	N/A	Yes
M2/M1 [%]		83.0
Dist 3dB Peak [mm]		12.3

Measurement Results

	Area Scan	Zoom Scan
psSAR1g [W/Kg]	0.580	0.592
psSAR10g [W/Kg]	0.382	0.386
Power Drift [dB]	N/A	-0.07



Measurement Report for Band n26: 5G NR (DFT-s-OFDM, 50% RB, 20 MHz, QPSK, 15 kHz) RBPosition:Mid AntennaCfg:SISO, CHEEK

Exposure Conditions

Band	Band n26	TSL Permittivity	41.1
Frequency [MHz] Channel Number	831.500 166300	TSL Conductivity [S/m]	0.867
Group UID	5G NR FR1 FDD 10939-AAC	Phantom Section TSL	RightHead HSL
Conversion Factor	7.83	Test Distance [mm]	0.00

Hardware Setup

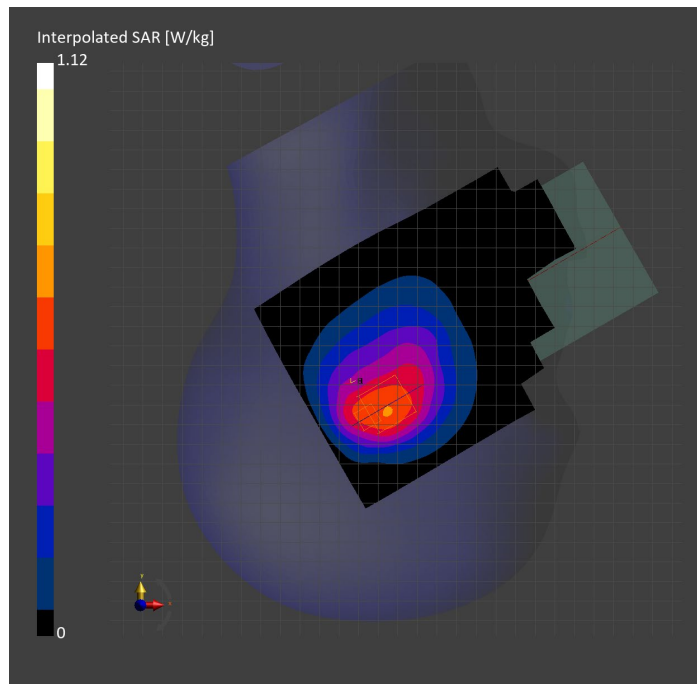
Probe Calibration Date	EX3DV4 - SN3749 2023-01-27	Phantom	Twin-SAM V8.0 (30deg probe tilt)
DAE Calibration Date	DAE4 Sn1357 2023-01-27	TSL Type	HBBL-600-10000
Software Version	16.2.4.2524		

Scan Setup

	Area Scan	Zoom Scan
Grid Extents [mm]	120.0 x 210.0	30.0 x 30.0 x 30.0
Grid Steps [mm]	15.0 x 15.0	6.0 x 6.0 x 1.5
Sensor Surface [mm]	3.0	1.4
Graded Grid	N/A	Yes
M2/M1 [%]		79.3
Dist 3dB Peak [mm]		8.7

Measurement Results

	Area Scan	Zoom Scan
psSAR1g [W/Kg]	0.564	0.604
psSAR10g [W/Kg]	0.380	0.393
Power Drift [dB]	N/A	0.01



Measurement Report for Band n26: 5G NR (DFT-s-OFDM, 1 RB, 20 MHz, QPSK, 15 kHz) RBPosition:Mid AntennaCfg:SISO, EDGE BOTTOM

Exposure Conditions

Band	Band n26	TSL Permittivity	42.1
Frequency [MHz] Channel Number	831.500 166300	TSL Conductivity [S/m]	0.897
Group UID	5G NR FR1 FDD 10931-AAC	Phantom Section TSL	Flat HSL
Conversion Factor	8.76	Test Distance [mm]	5.00

Hardware Setup

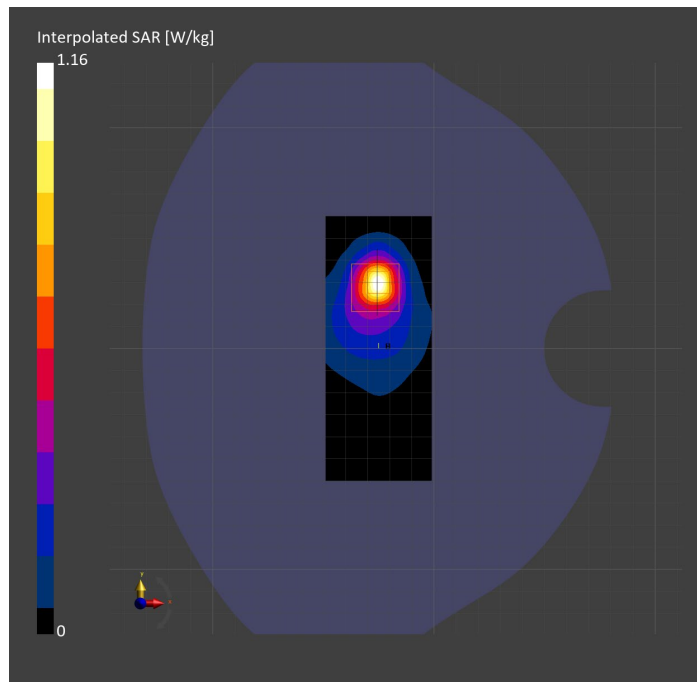
Probe Calibration Date	EX3DV4 - SN7806 2023-04-04	Phantom	Twin-SAM V8.0 (30deg probe tilt)
DAE Calibration Date	DAE4 Sn1784 2023-04-03	TSL Type	HBBL-600-10000
Software Version	16.2.4.2524		

Scan Setup

	Area Scan	Zoom Scan
Grid Extents [mm]	48.0 x 120.0	30.0 x 30.0 x 30.0
Grid Steps [mm]	8.0 x 15.0	6.0 x 6.0 x 1.5
Sensor Surface [mm]	3.0	1.4
Graded Grid	N/A	Yes
M2/M1 [%]		53.8
Dist 3dB Peak [mm]		7.2

Measurement Results

	Area Scan	Zoom Scan
psSAR1g [W/Kg]	0.276	0.299
psSAR10g [W/Kg]	0.137	0.113
Power Drift [dB]	N/A	0.04



Measurement Report for Band n30: 5G NR (DFT-s-OFDM, 1 RB, 10 MHz, QPSK, 15 kHz) RBPosition:Mid AntennaCfg:SISO, CHEEK

Exposure Conditions

Band	Band n30	TSL Permittivity	41.1
Frequency [MHz] Channel Number	2310.000 462000	TSL Conductivity [S/m]	1.71
Group UID	5G NR FR1 FDD 10929-AAD	Phantom Section TSL	RightHead HSL
Conversion Factor	7.71	Test Distance [mm]	0.00

Hardware Setup

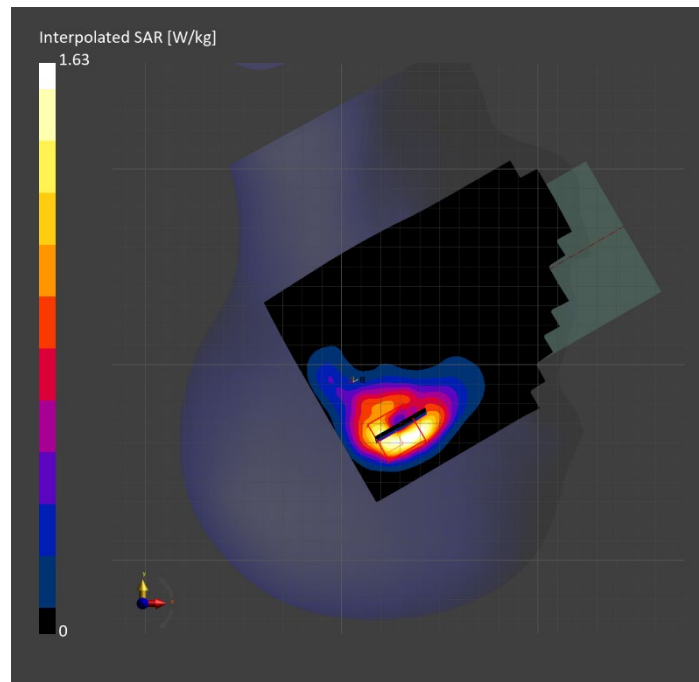
Probe Calibration Date	EX3DV4 - SN7482 2023-04-18	Phantom	Twin-SAM V8.0 (30deg probe tilt)
DAE Calibration Date	DAE4 Sn1380 2023-02-14	TSL Type	HBBL-600-10000
Software Version	16.2.4.2524		

Scan Setup

	Area Scan	Zoom Scan
Grid Extents [mm]	120.0 x 200.0	30.0 x 30.0 x 30.0
Grid Steps [mm]	10.0 x 10.0	5.0 x 5.0 x 1.5
Sensor Surface [mm]	3.0	1.4
Graded Grid	N/A	Yes
M2/M1 [%]		75.7
Dist 3dB Peak [mm]		5.7

Measurement Results

	Area Scan	Zoom Scan
psSAR1g [W/Kg]	0.636	0.712
psSAR10g [W/Kg]	0.324	0.324
Power Drift [dB]	N/A	0.02



Measurement Report for Band n30: 5G NR (DFT-s-OFDM, 1 RB, 10 MHz, QPSK, 15 kHz) RBPosition:Mid AntennaCfg:SISO, BACK

Exposure Conditions

Band	Band n30	TSL Permittivity	38.6
Frequency [MHz] Channel Number	2310.000 462000	TSL Conductivity [S/m]	1.68
Group UID	5G NR FR1 FDD 10929-AAD	Phantom Section TSL	Flat HSL
Conversion Factor	7.71	Test Distance [mm]	5.00

Hardware Setup

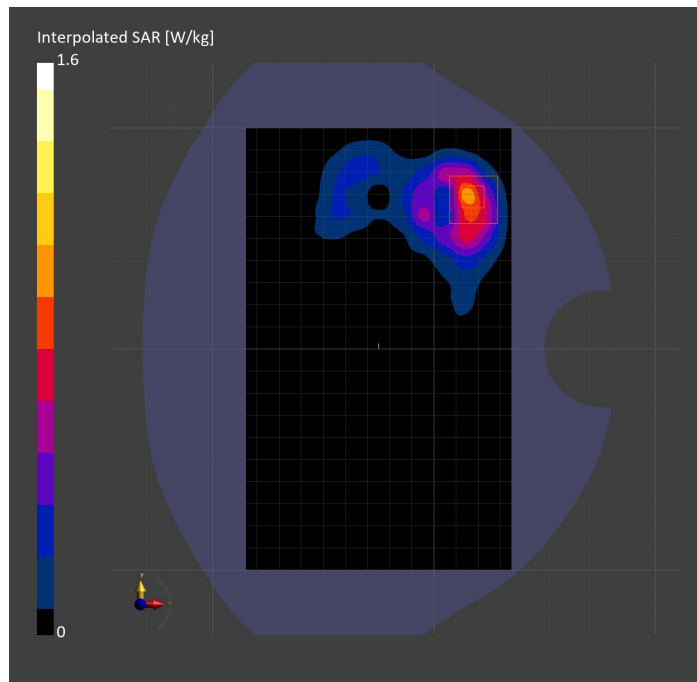
Probe Calibration Date	EX3DV4 - SN7482 2023-04-18	Phantom	Twin-SAM V8.0 (30deg probe tilt)
DAE Calibration Date	DAE4 Sn1380 2023-02-14	TSL Type	HBBL-600-10000
Software Version	16.2.4.2524		

Scan Setup

	Area Scan	Zoom Scan
Grid Extents [mm]	120.0 x 200.0	30.0 x 30.0 x 30.0
Grid Steps [mm]	10.0 x 10.0	5.0 x 5.0 x 1.5
Sensor Surface [mm]	3.0	1.4
Graded Grid	N/A	Yes
M2/M1 [%]		83.3
Dist 3dB Peak [mm]		5.9

Measurement Results

	Area Scan	Zoom Scan
psSAR1g [W/Kg]	0.747	0.762
psSAR10g [W/Kg]	0.353	0.338
Power Drift [dB]	N/A	0.03



Measurement Report for Band n30: 5G NR (DFT-s-OFDM, 1 RB, 10 MHz, QPSK, 15 kHz) RBPosition:Mid AntennaCfg:SISO, EDGE LEFT

Exposure Conditions

Band	Band n30	TSL Permittivity	40.2
Frequency [MHz] Channel Number	2310.000 462000	TSL Conductivity [S/m]	1.63
Group UID	5G NR FR1 FDD 10929-AAD	Phantom Section TSL	Flat HSL
Conversion Factor	7.71	Test Distance [mm]	5.00

Hardware Setup

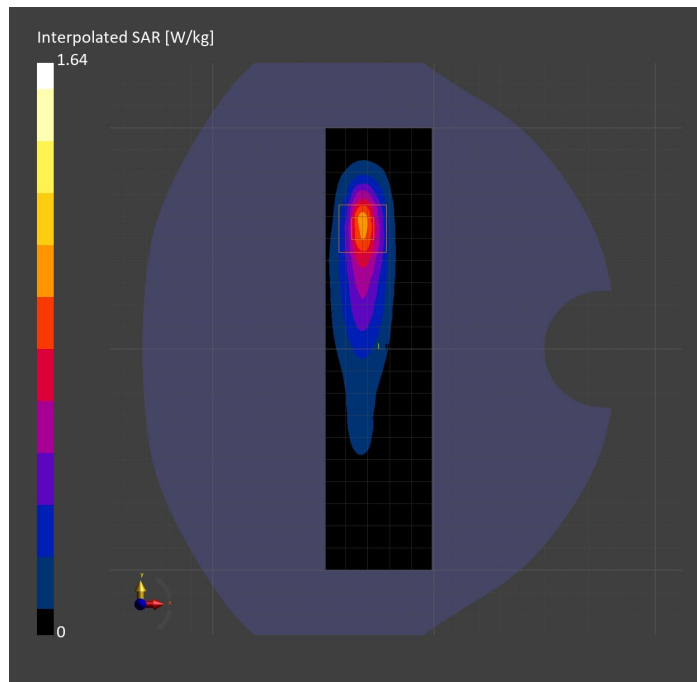
Probe Calibration Date	EX3DV4 - SN7482 2023-04-18	Phantom	Twin-SAM V8.0 (30deg probe tilt)
DAE Calibration Date	DAE4 Sn1380 2023-02-14	TSL Type	HBBL-600-10000
Software Version	16.2.4.2524		

Scan Setup

	Area Scan	Zoom Scan
Grid Extents [mm]	48.0 x 200.0	30.0 x 30.0 x 30.0
Grid Steps [mm]	8.0 x 10.0	5.0 x 5.0 x 1.5
Sensor Surface [mm]	3.0	1.4
Graded Grid	N/A	Yes
M2/M1 [%]		80.1
Dist 3dB Peak [mm]		7.0

Measurement Results

	Area Scan	Zoom Scan
psSAR1g [W/Kg]	0.751	0.760
psSAR10g [W/Kg]	0.335	0.339
Power Drift [dB]	N/A	-0.00



Measurement Report for Band n41: 5G NR (DFT-s-OFDM, 50% RB, 100 MHz, QPSK, 30 kHz) RBPosition:Mid AntennaCfg:SISO, BACK

Exposure Conditions

Band	Band n41	TSL Permittivity	40.2
Frequency [MHz] Channel Number	2592.990 518598	TSL Conductivity [S/m]	1.96
Group UID	5G NR FR1 TDD 10917-AAD	Phantom Section TSL	Flat HSL
Conversion Factor	7.33	Test Distance [mm]	5.00

Hardware Setup

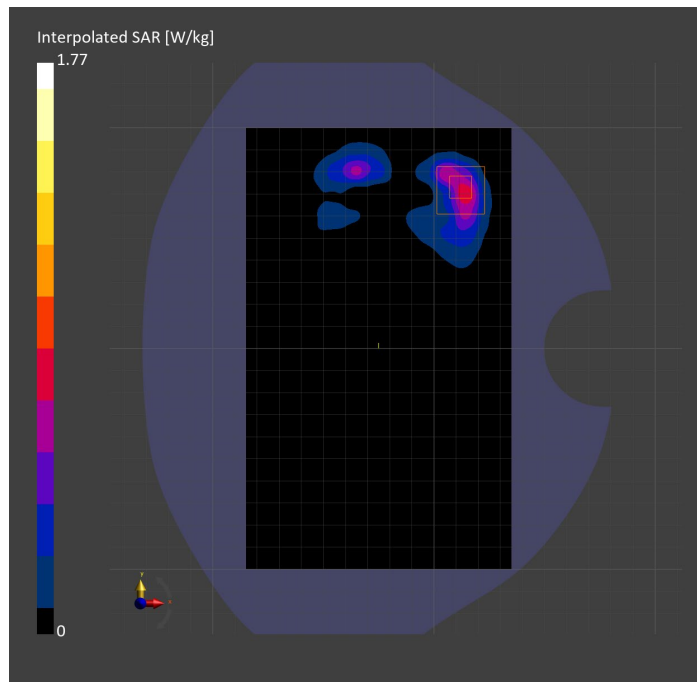
Probe Calibration Date	EX3DV4 - SN7808 2023-04-18	Phantom	Twin-SAM V8.0 (30deg probe tilt)
DAE Calibration Date	DAE4 Sn1796 2023-04-03	TSL Type	HBBL-600-10000
Software Version	16.2.4.2524		

Scan Setup

	Area Scan	Zoom Scan
Grid Extents [mm]	120.0 x 200.0	30.0 x 30.0 x 30.0
Grid Steps [mm]	10.0 x 10.0	4.5 x 4.5 x 1.5
Sensor Surface [mm]	3.0	1.4
Graded Grid	N/A	Yes
M2/M1 [%]		75.8
Dist 3dB Peak [mm]		5.8

Measurement Results

	Area Scan	Zoom Scan
psSAR1g [W/Kg]	0.601	0.747
psSAR10g [W/Kg]	0.260	0.300
Power Drift [dB]	N/A	-0.00



Measurement Report for Band n41: 5G NR (DFT-s-OFDM, 1 RB, 100 MHz, QPSK, 30 kHz) RBPosition:Mid AntennaCfg:SISO, CHEEK

Exposure Conditions

Band	Band n41	TSL Permittivity	39.4
Frequency [MHz] Channel Number	2592.990 518598	TSL Conductivity [S/m]	1.89
Group UID	5G NR FR1 TDD 10866-AAF	Phantom Section TSL	LeftHead HSL
Conversion Factor	7.32	Test Distance [mm]	0.00

Hardware Setup

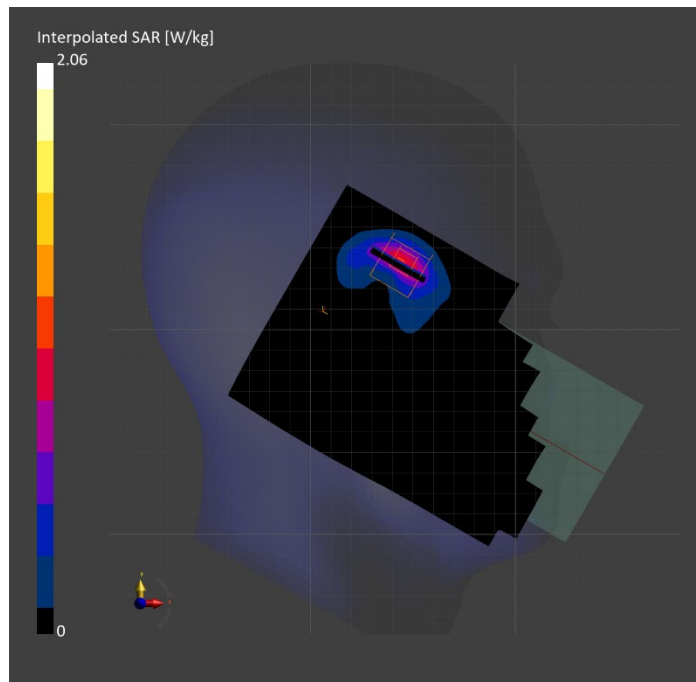
Probe Calibration Date	EX3DV4 - SN3885 2022-09-20	Phantom	Twin-SAM V5.0 (30deg probe tilt)
DAE Calibration Date	DAE4 Sn1548 2023-02-14	TSL Type	HBBL-600-10000
Software Version	16.2.4.2524		

Scan Setup

	Area Scan	Zoom Scan
Grid Extents [mm]	120.0 x 200.0	30.0 x 30.0 x 30.0
Grid Steps [mm]	10.0 x 10.0	5.0 x 5.0 x 1.5
Sensor Surface [mm]	3.0	1.4
Graded Grid	N/A	Yes
M2/M1 [%]		71.8
Dist 3dB Peak [mm]		5.1

Measurement Results

	Area Scan	Zoom Scan
psSAR1g [W/Kg]	0.747	0.774
psSAR10g [W/Kg]	0.325	0.316
Power Drift [dB]	N/A	-0.00



Measurement Report for Band n41: 5G NR (DFT-s-OFDM, 1 RB, 100 MHz, QPSK, 30 kHz) RBPosition:Mid AntennaCfg:SISO, EDGE RIGHT

Exposure Conditions

Band	Band n41	TSL Permittivity	39.4
Frequency [MHz] Channel Number	2592.990 518598	TSL Conductivity [S/m]	1.89
Group UID	5G NR FR1 TDD 10866-AAF	Phantom Section TSL	Flat HSL
Conversion Factor	7.32	Test Distance [mm]	5.00

Hardware Setup

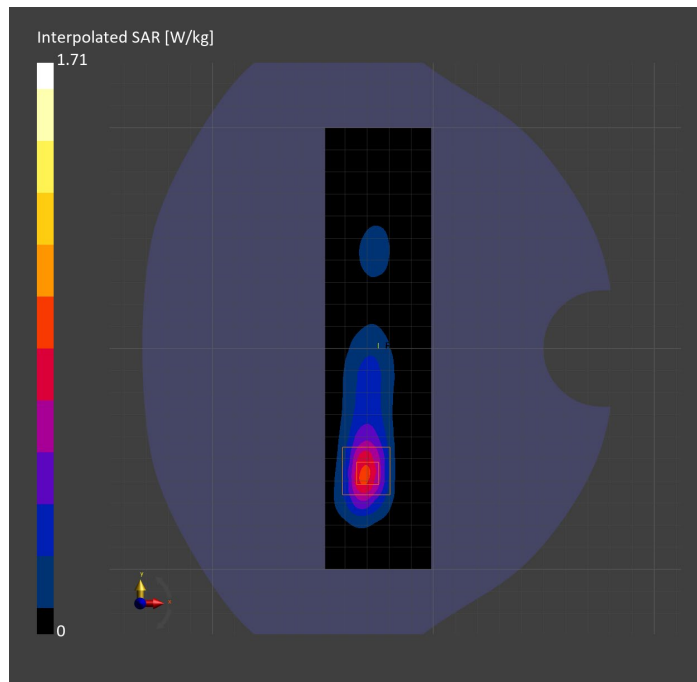
Probe Calibration Date	EX3DV4 - SN3885 2022-09-20	Phantom	Twin-SAM V5.0 (30deg probe tilt)
DAE Calibration Date	DAE4 Sn1548 2023-02-14	TSL Type	HBBL-600-10000
Software Version	16.2.4.2524		

Scan Setup

	Area Scan	Zoom Scan
Grid Extents [mm]	48.0 x 200.0	30.0 x 30.0 x 30.0
Grid Steps [mm]	8.0 x 10.0	5.0 x 5.0 x 1.5
Sensor Surface [mm]	3.0	1.4
Graded Grid	N/A	Yes
M2/M1 [%]		77.8
Dist 3dB Peak [mm]		7.0

Measurement Results

	Area Scan	Zoom Scan
psSAR1g [W/Kg]	0.671	0.727
psSAR10g [W/Kg]	0.291	0.297
Power Drift [dB]	N/A	-0.14



Measurement Report for Band n48: 5G NR (DFT-s-OFDM, 50% RB, 40 MHz, QPSK, 30 kHz) RBPosition:Mid AntennaCfg:SISO, EDGE RIGHT

Exposure Conditions

Band	Band n48	TSL Permittivity	38.9
Frequency [MHz] Channel Number	3643.315 642888	TSL Conductivity [S/m]	3.14
Group UID	5G NR FR1 TDD 10913-AAD	Phantom Section TSL	Flat HSL
Conversion Factor	6.92	Test Distance [mm]	5.00

Hardware Setup

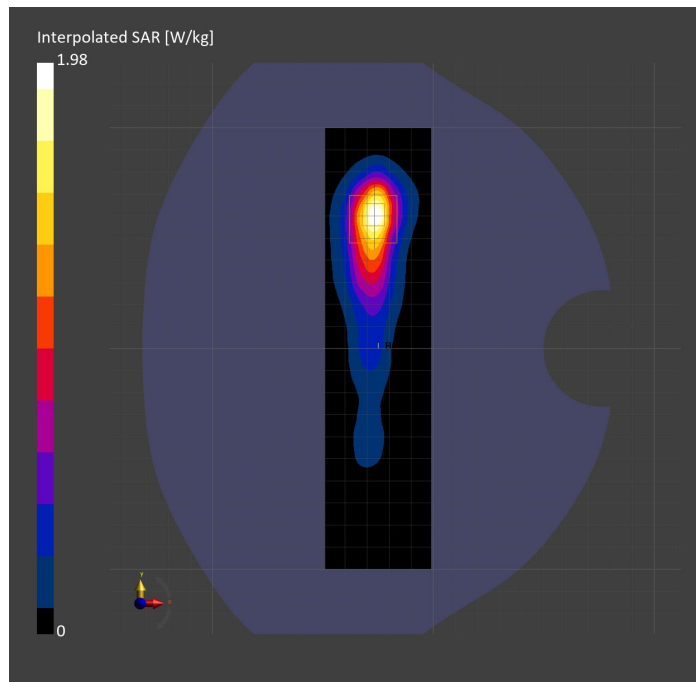
Probe Calibration Date	EX3DV4 - SN7335 2023-01-26	Phantom	Twin-SAM V8.0 (30deg probe tilt)
DAE Calibration Date	DAE4ip Sn1619 2023-04-18	TSL Type	HBBL-600-10000
Software Version	16.2.4.2524		

Scan Setup

	Area Scan	Zoom Scan
Grid Extents [mm]	48.0 x 200.0	30.0 x 30.0 x 28.0
Grid Steps [mm]	8.0 x 10.0	5.0 x 5.0 x 1.4
Sensor Surface [mm]	3.0	1.4
Graded Grid	N/A	Yes
M2/M1 [%]		72.8
Dist 3dB Peak [mm]		8.0

Measurement Results

	Area Scan	Zoom Scan
psSAR1g [W/Kg]	0.722	0.721
psSAR10g [W/Kg]	0.285	0.277
Power Drift [dB]	N/A	0.02



Measurement Report for Band n48: 5G NR (DFT-s-OFDM, 1 RB, 40 MHz, QPSK, 30 kHz) RBPosition:Mid AntennaCfg:SISO, CHEEK

Exposure Conditions

Band	Band n48	TSL Permittivity	38.9
Frequency [MHz] Channel Number	3643.315 642888	TSL Conductivity [S/m]	3.06
Group UID	5G NR FR1 TDD 10903-AAD	Phantom Section TSL	RightHead HSL
Conversion Factor	6.66	Test Distance [mm]	0.00

Hardware Setup

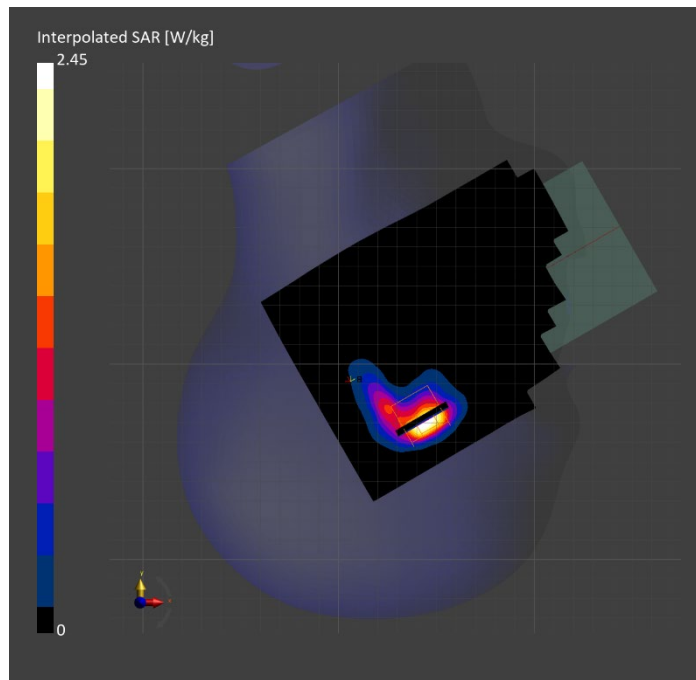
Probe Calibration Date	EX3DV4 - SN3990 2023-02-17	Phantom	Twin-SAM V5.0 (30deg probe tilt)
DAE Calibration Date	DAE4 Sn1545 2023-02-14	TSL Type	HBBL-600-10000
Software Version	16.2.4.2524		

Scan Setup

	Area Scan	Zoom Scan
Grid Extents [mm]	120.0 x 200.0	30.0 x 30.0 x 28.0
Grid Steps [mm]	10.0 x 10.0	5.0 x 5.0 x 1.4
Sensor Surface [mm]	3.0	1.4
Graded Grid	N/A	Yes
M2/M1 [%]		72.4
Dist 3dB Peak [mm]		5.1

Measurement Results

	Area Scan	Zoom Scan
psSAR1g [W/Kg]	0.711	0.771
psSAR10g [W/Kg]	0.270	0.264
Power Drift [dB]	N/A	0.01



Measurement Report for Band n48: 5G NR (DFT-s-OFDM, 50% RB, 40 MHz, QPSK, 30 kHz) RBPosition:Mid AntennaCfg:SISO, BACK

Exposure Conditions

Band	Band n48	TSL Permittivity	36.7
Frequency [MHz] Channel Number	3643.315 642888	TSL Conductivity [S/m]	2.94
Group UID	5G NR FR1 TDD 10913-AAD	Phantom Section TSL	Flat HSL
Conversion Factor	6.92	Test Distance [mm]	5.00

Hardware Setup

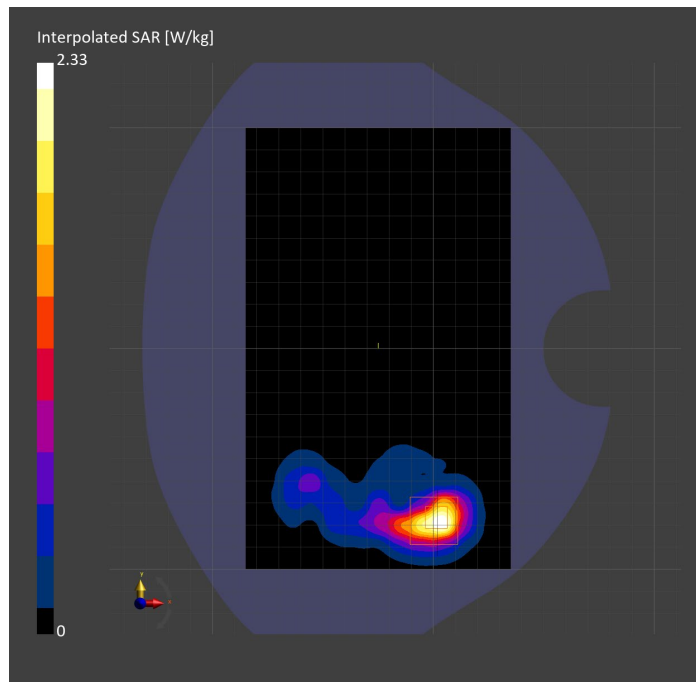
Probe Calibration Date	EX3DV4 - SN7335 2023-01-26	Phantom	Twin-SAM V8.0 (30deg probe tilt)
DAE Calibration Date	DAE4ip Sn1619 2023-04-18	TSL Type	HBBL-600-10000
Software Version	16.2.4.2524		

Scan Setup

	Area Scan	Zoom Scan
Grid Extents [mm]	120.0 x 200.0	30.0 x 30.0 x 28.0
Grid Steps [mm]	10.0 x 10.0	5.0 x 5.0 x 1.4
Sensor Surface [mm]	3.0	1.4
Graded Grid	N/A	Yes
M2/M1 [%]		74.3
Dist 3dB Peak [mm]		5.9

Measurement Results

	Area Scan	Zoom Scan
psSAR1g [W/Kg]	0.592	0.808
psSAR10g [W/Kg]	0.227	0.279
Power Drift [dB]	N/A	1.01



Measurement Report for Band n53: 5G NR (DFT-s-OFDM, 1 RB, 10 MHz, QPSK, 30 kHz) RBPosition:Mid AntennaCfg:SISO, EDGE RIGHT

Exposure Conditions

Band	Band n53	TSL Permittivity	37.5
Frequency [MHz] Channel Number	2489.200 497840	TSL Conductivity [S/m]	1.78
Group UID	5G NR FR1 TDD 10898-AAC	Phantom Section TSL	Flat HSL
Conversion Factor	7.64	Test Distance [mm]	5.00

Hardware Setup

Probe Calibration Date	EX3DV4 - SN7587 2023-04-18	Phantom	Twin-SAM V8.0 (30deg probe tilt)
DAE Calibration Date	DAE4 Sn1239 2023-03-16	TSL Type	HBBL-600-10000
Software Version	16.2.4.2524		

Scan Setup

	Area Scan	Zoom Scan
Grid Extents [mm]	48.0 x 200.0	30.0 x 30.0 x 30.0
Grid Steps [mm]	8.0 x 10.0	5.0 x 5.0 x 1.5
Sensor Surface [mm]	3.0	1.4
Graded Grid	N/A	Yes
M2/M1 [%]		78.8
Dist 3dB Peak [mm]		6.4

Measurement Results

	Area Scan	Zoom Scan
psSAR1g [W/Kg]	0.653	0.675
psSAR10g [W/Kg]	0.269	0.276
Power Drift [dB]	N/A	0.03

