

# Measurement Report for GSM 850: GPRS-FDD (TDMA, GMSK, TN 0-1), CHEEK

## Exposure Conditions

Band	GSM 850	TSL Permittivity	41.8
Frequency [MHz]   Channel Number	836.600   190	TSL Conductivity [S/m]	0.926
Group   UID	GSM   10024-DAC	Phantom Section   TSL	RightHead   HSL
Conversion Factor	9.48	Test Distance [mm]	0.00

## Hardware Setup

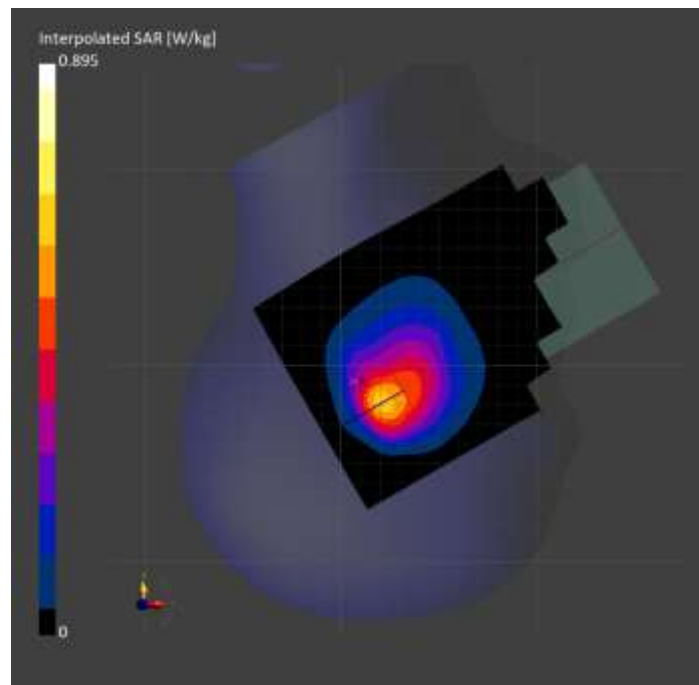
Probe   Calibration Date	EX3DV4 - SN3991   2022-09-22	Phantom	Twin-SAM V8.0 (30deg probe tilt)
DAE   Calibration Date	DAE4 Sn1674   2023-05-11	TSL Type	HBBL-600-10000
Software Version	16.2.4.2524		

## Scan Setup

	Area Scan	Zoom Scan
Grid Extents [mm]	120.0 x 210.0	30.0 x 30.0 x 30.0
Grid Steps [mm]	15.0 x 15.0	5.7 x 5.7 x 1.5
Sensor Surface [mm]	3.0	1.4
Graded Grid	N/A	Yes
M2/M1 [%]		83.1
Dist 3dB Peak [mm]		9.2

## Measurement Results

	Area Scan	Zoom Scan
psSAR1g [W/Kg]	0.536	<b>0.526</b>
psSAR10g [W/Kg]	0.341	<b>0.337</b>
Power Drift [dB]	N/A	0.00



# Measurement Report for Band 4: UMTS-FDD (WCDMA), CHEEK

## Exposure Conditions

Band	Band 4	TSL Permittivity	40.0
Frequency [MHz]   Channel Number	1732.600   1413	TSL Conductivity [S/m]	1.35
Group   UID	WCDMA   10011-CAC	Phantom Section   TSL	LeftHead   HSL
Conversion Factor	8.02	Test Distance [mm]	0.00

## Hardware Setup

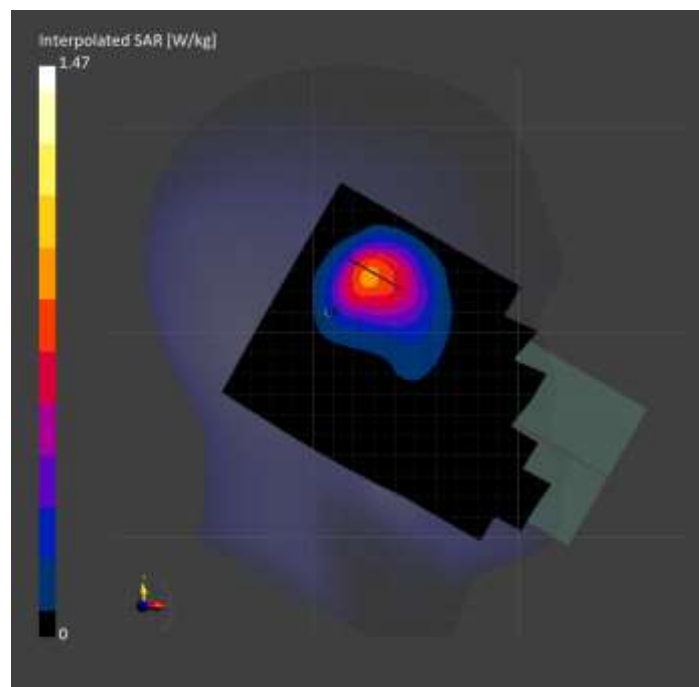
Probe   Calibration Date	EX3DV4 - SN7807   2023-04-11	Phantom	Twin-SAM V8.0 (30deg probe tilt)
DAE   Calibration Date	DAE4 Sn1799   2023-04-04	TSL Type	HBBL-600-10000
Software Version	16.2.4.2524		

## Scan Setup

	Area Scan	Zoom Scan
Grid Extents [mm]	120.0 x 210.0	30.0 x 30.0 x 30.0
Grid Steps [mm]	15.0 x 15.0	6.0 x 6.0 x 1.5
Sensor Surface [mm]	3.0	1.4
Graded Grid	N/A	Yes
M2/M1 [%]		79.1
Dist 3dB Peak [mm]		8.7

## Measurement Results

	Area Scan	Zoom Scan
psSAR1g [W/Kg]	0.738	<b>0.713</b>
psSAR10g [W/Kg]	0.432	<b>0.424</b>
Power Drift [dB]	N/A	-0.02



# Measurement Report for Band 25: LTE-FDD (SC-FDMA, 50% RB, 20 MHz, QPSK) RBPosition:Mid AntennaCfg:SISO, CHEEK

## Exposure Conditions

Band	Band 25	TSL Permittivity	39.7
Frequency [MHz]   Channel Number	1882.500   26365	TSL Conductivity [S/m]	1.43
Group   UID	LTE-FDD   10297-AAE	Phantom Section   TSL	LeftHead   HSL
Conversion Factor	7.53	Test Distance [mm]	0.00

## Hardware Setup

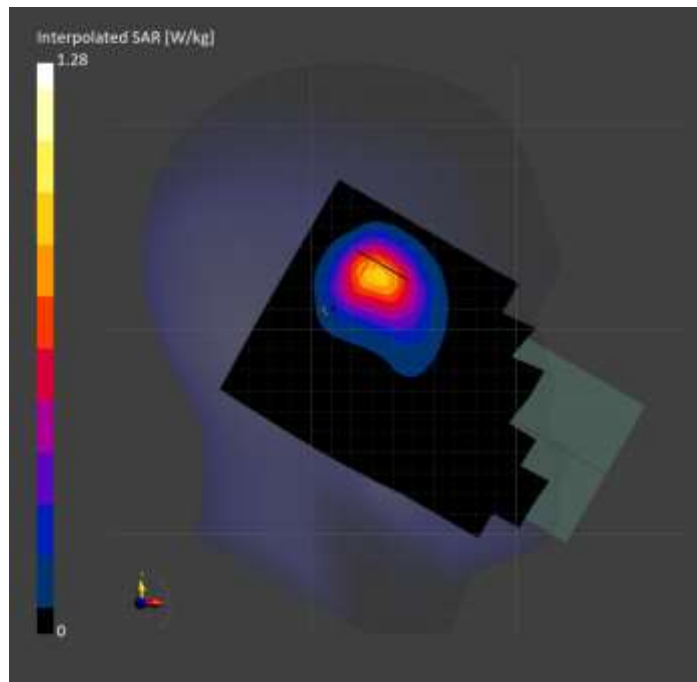
Probe   Calibration Date	EX3DV4 - SN7807   2023-04-11	Phantom	Twin-SAM V8.0 (30deg probe tilt)
DAE   Calibration Date	DAE4 Sn1799   2023-04-04	TSL Type	HBBL-600-10000
Software Version	16.2.4.2524		

## Scan Setup

	Area Scan	Zoom Scan
Grid Extents [mm]	120.0 x 210.0	30.0 x 30.0 x 30.0
Grid Steps [mm]	15.0 x 15.0	6.0 x 6.0 x 1.5
Sensor Surface [mm]	3.0	1.4
Graded Grid	N/A	Yes
M2/M1 [%]		83.0
Dist 3dB Peak [mm]		10.4

## Measurement Results

	Area Scan	Zoom Scan
psSAR1g [W/Kg]	0.722	<b>0.743</b>
psSAR10g [W/Kg]	0.412	<b>0.423</b>
Power Drift [dB]	N/A	-0.02



# Measurement Report for Band n66: 5G NR (DFT-s-OFDM, 50% RB, 40 MHz, QPSK, 15 kHz) RBPosition:Mid AntennaCfg:SISO, CHEEK

## Exposure Conditions

Band	Band n66	TSL Permittivity	39.5
Frequency [MHz]   Channel Number	1745.000   349000	TSL Conductivity [S/m]	1.35
Group   UID	5G NR FR1 FDD   10942-AAC	Phantom Section   TSL	LeftHead   HSL
Conversion Factor	8.02	Test Distance [mm]	0.00

## Hardware Setup

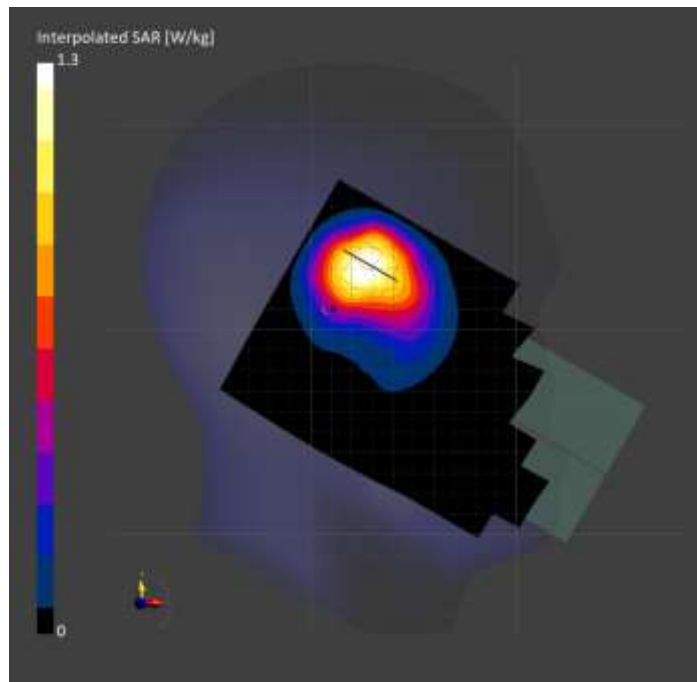
Probe   Calibration Date	EX3DV4 - SN7807   2023-04-11	Phantom	Twin-SAM V8.0 (30deg probe tilt)
DAE   Calibration Date	DAE4 Sn1799   2023-04-04	TSL Type	HBBL-600-10000
Software Version	16.2.4.2524		

## Scan Setup

	Area Scan	Zoom Scan
Grid Extents [mm]	120.0 x 210.0	30.0 x 30.0 x 30.0
Grid Steps [mm]	15.0 x 15.0	6.0 x 6.0 x 1.5
Sensor Surface [mm]	3.0	1.4
Graded Grid	N/A	Yes
M2/M1 [%]		74.7
Dist 3dB Peak [mm]		8.6

## Measurement Results

	Area Scan	Zoom Scan
psSAR1g [W/Kg]	0.609	<b>0.648</b>
psSAR10g [W/Kg]	0.361	<b>0.381</b>
Power Drift [dB]	N/A	-0.02



# Measurement Report for WLAN 2.4GHz: IEEE 802.11b WiFi 2.4 GHz (DSSS, 1 Mbps, 99pc duty cycle), CHEEK

## Exposure Conditions

Band	WLAN 2.4GHz	TSL Permittivity	40.2
Frequency [MHz]   Channel Number	2437.000   6	TSL Conductivity [S/m]	1.66
Group   UID	WLAN   10415-AAA	Phantom Section   TSL	LeftHead   HSL
Conversion Factor	7.64	Test Distance [mm]	0.00

## Hardware Setup

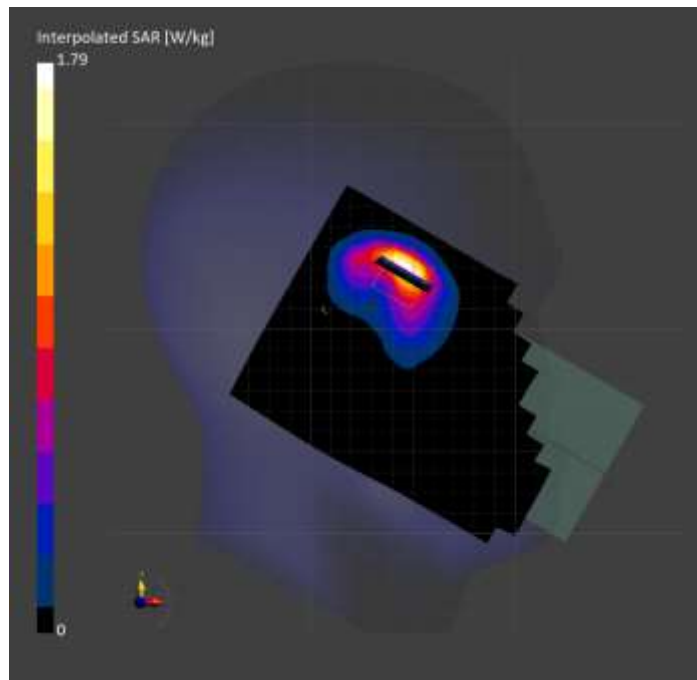
Probe   Calibration Date	EX3DV4 - SN7587   2023-04-18	Phantom	Twin-SAM V8.0 (30deg probe tilt)
DAE   Calibration Date	DAE4 Sn1239   2023-03-16	TSL Type	HBBL-600-10000
Software Version	16.2.4.2524		

## Scan Setup

	Area Scan	Zoom Scan
Grid Extents [mm]	120.0 x 200.0	30.0 x 30.0 x 30.0
Grid Steps [mm]	10.0 x 10.0	5.0 x 5.0 x 1.5
Sensor Surface [mm]	3.0	1.4
Graded Grid	N/A	Yes
M2/M1 [%]		77.0
Dist 3dB Peak [mm]		6.4

## Measurement Results

	Area Scan	Zoom Scan
psSAR1g [W/Kg]	0.729	<b>0.760</b>
psSAR10g [W/Kg]	0.328	<b>0.341</b>
Power Drift [dB]	N/A	0.02



# Measurement Report for U-NII-1, U-NII-2A: IEEE 802.11n (HT Greenfield, 13.5 Mbps, BPSK), CHEEK

## Exposure Conditions

Band	U-NII-1, U-NII-2A	TSL Permittivity	35.6
Frequency [MHz]   Channel Number	5270.000   54	TSL Conductivity [S/m]	4.69
Group   UID	WLAN   10114-CAE	Phantom Section   TSL	RightHead   HSL
Conversion Factor	5.56	Test Distance [mm]	0.00

## Hardware Setup

Probe   Calibration Date	EX3DV4 - SN7810   2023-04-25	Phantom	Twin-SAM V8.0 (30deg probe tilt)
DAE   Calibration Date	DAE4 Sn1439   2023-03-16	TSL Type	HBBL-600-10000
Software Version	16.2.4.2524		

## Scan Setup

	Area Scan	Zoom Scan
Grid Extents [mm]	120.0 x 200.0	24.0 x 24.0 x 22.0
Grid Steps [mm]	10.0 x 10.0	4.0 x 4.0 x 1.4
Sensor Surface [mm]	3.0	1.4
Graded Grid	N/A	Yes
M2/M1 [%]		70.5
Dist 3dB Peak [mm]		4.2

## Measurement Results

	Area Scan	Zoom Scan
psSAR1g [W/Kg]	0.491	<b>0.505</b>
psSAR10g [W/Kg]	0.171	<b>0.163</b>
Power Drift [dB]	N/A	0.07

