

System Performance Check Report for D2450V2 - SN706

Exposure Conditions

Frequency [MHz] Channel Number	2450.000 0	TSL Permittivity	38.0
Group UID	CW 0--	TSL Conductivity [S/m]	1.82
Conversion Factor	7.33	Phantom Section TSL	Flat HSL

Hardware Setup

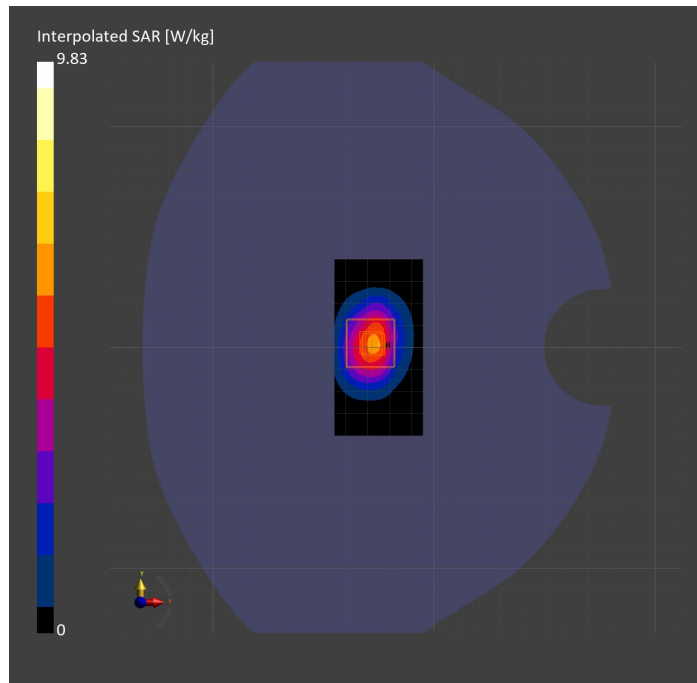
Probe Calibration Date	EX3DV4 - SN3772 2023-02-13	Phantom	Twin-SAM V8.0 (30deg probe tilt)
DAE Calibration Date	DAE4 Sn1359 2023-01-24	TSL Type	HBBL-600-10000
Software Version	16.2.4.2524		

Scans Setup

	Area Scan	Zoom Scan
Grid Extents [mm]	40.0 x 80.0	30.0 x 30.0 x 30.0
Grid Steps [mm]	10.0 x 10.0	5.0 x 5.0 x 1.5
Sensor Surface [mm]	3.0	1.4
Graded Grid	N/A	Yes
M2/M1 [%]		81.3
Dist 3dB Peak [mm]		9.0

Measurement Results

	Area Scan	Zoom Scan
psSAR1g [W/Kg]	4.74	4.90
psSAR10g [W/Kg]	2.28	2.29
Power Drift [dB]	N/A	0.07



System Performance Check Report for D5GHzV2 - SN1138

Exposure Conditions

Frequency [MHz] Channel Number	5250.000 0	TSL Permittivity	37.1
Group UID	CW 0--	TSL Conductivity [S/m]	4.85
Conversion Factor	5.14	Phantom Section TSL	Flat HSL

Hardware Setup

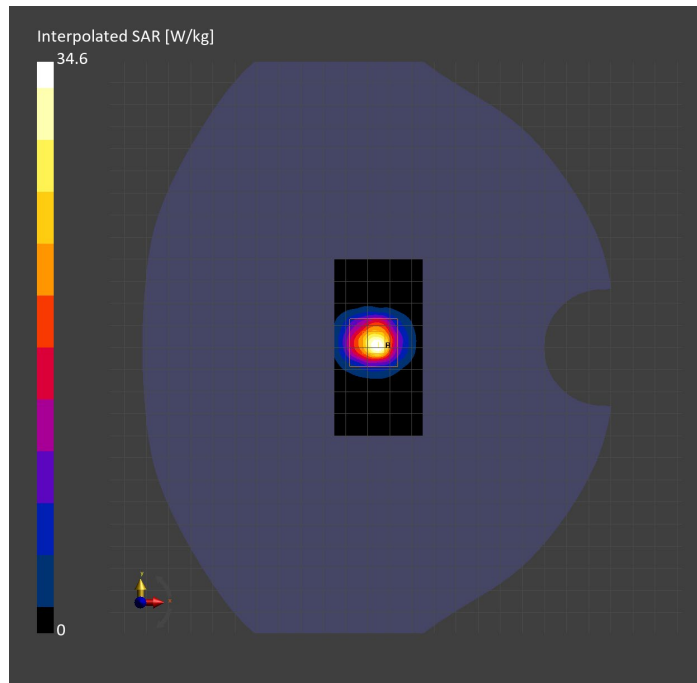
Probe Calibration Date	EX3DV4 - SN3773 2023-02-13	Phantom	Twin-SAM V5.0 (30deg probe tilt)
DAE Calibration Date	DAE4 Sn1258 2023-03-16	TSL Type	HBBL-600-10000
Software Version	16.2.4.2524		

Scans Setup

	Area Scan	Zoom Scan
Grid Extents [mm]	40.0 x 80.0	22.0 x 22.0 x 22.0
Grid Steps [mm]	10.0 x 10.0	4.0 x 4.0 x 1.4
Sensor Surface [mm]	3.0	1.4
Graded Grid	N/A	Yes
M2/M1 [%]		62.9
Dist 3dB Peak [mm]		7.4

Measurement Results

	Area Scan	Zoom Scan
psSAR1g [W/Kg]	7.37	8.60
psSAR10g [W/Kg]	2.25	2.47
Power Drift [dB]	N/A	0.18



System Performance Check Report for D2450V2 - SN899

Exposure Conditions

Frequency [MHz] Channel Number	2450.000 0	TSL Permittivity	40.0
Group UID	CW 0--	TSL Conductivity [S/m]	1.74
Conversion Factor	7.64	Phantom Section TSL	Flat HSL

Hardware Setup

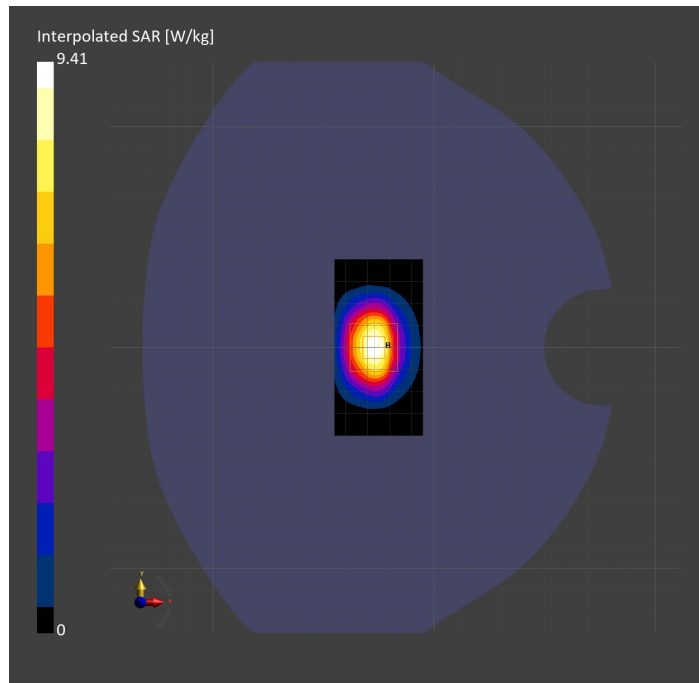
Probe Calibration Date	EX3DV4 - SN7587 2023-04-18	Phantom	Twin-SAM V8.0 (30deg probe tilt)
DAE Calibration Date	DAE4 Sn1239 2023-03-16	TSL Type	HBBL-600-10000
Software Version	16.2.4.2524		

Scans Setup

	Area Scan	Zoom Scan
Grid Extents [mm]	40.0 x 80.0	30.0 x 30.0 x 30.0
Grid Steps [mm]	10.0 x 10.0	5.0 x 5.0 x 1.5
Sensor Surface [mm]	3.0	1.4
Graded Grid	N/A	Yes
M2/M1 [%]		82.0
Dist 3dB Peak [mm]		9.0

Measurement Results

	Area Scan	Zoom Scan
psSAR1g [W/Kg]	4.82	4.87
psSAR10g [W/Kg]	2.28	2.34
Power Drift [dB]	N/A	0.00



System Performance Check Report for D5GHzV2 - SN1003

Exposure Conditions

Frequency [MHz] Channel Number	5750.000 0	TSL Permittivity	34.6
Group UID	CW 0--	TSL Conductivity [S/m]	5.23
Conversion Factor	5.0	Phantom Section TSL	Flat HSL

Hardware Setup

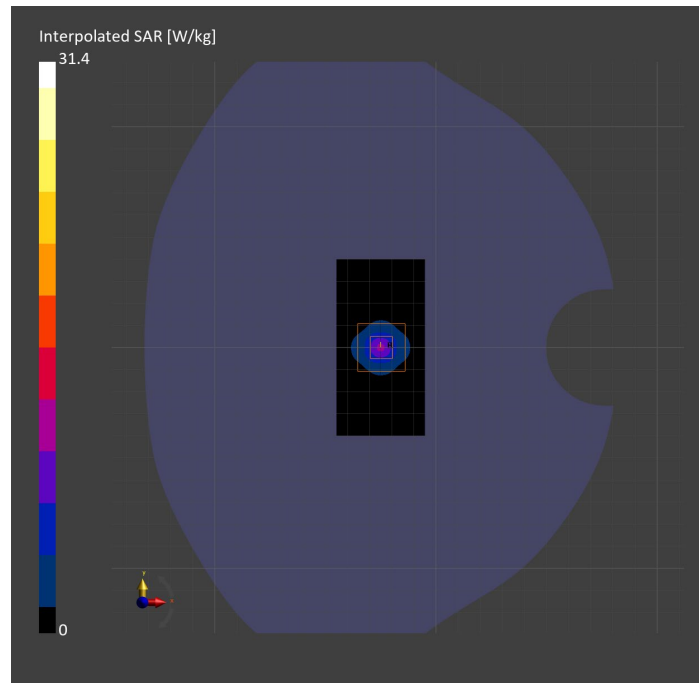
Probe Calibration Date	EX3DV4 - SN3929 2023-04-26	Phantom	Twin-SAM V5.0 (30deg probe tilt)
DAE Calibration Date	DAE4 Sn1675 2023-05-11	TSL Type	HBBL-600-10000
Software Version	16.2.4.2524		

Scans Setup

	Area Scan	Zoom Scan
Grid Extents [mm]	40.0 x 80.0	22.0 x 22.0 x 22.0
Grid Steps [mm]	10.0 x 10.0	4.0 x 4.0 x 1.4
Sensor Surface [mm]	3.0	1.4
Graded Grid	N/A	Yes
M2/M1 [%]		60.4
Dist 3dB Peak [mm]		7.4

Measurement Results

	Area Scan	Zoom Scan
psSAR1g [W/Kg]	6.82	7.25
psSAR10g [W/Kg]	1.93	2.06
Power Drift [dB]	N/A	0.02



System Performance Check Report for D5GHzV2 - SN1003

Exposure Conditions

Frequency [MHz] Channel Number	5600.000 0	TSL Permittivity	34.5
Group UID	CW 0--	TSL Conductivity [S/m]	4.84
Conversion Factor	4.75	Phantom Section TSL	Flat HSL

Hardware Setup

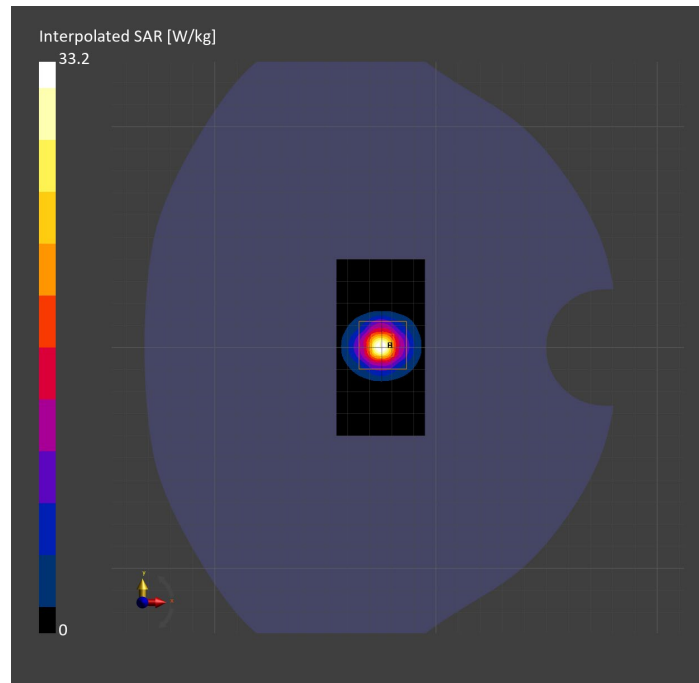
Probe Calibration Date	EX3DV4 - SN3929 2023-04-26	Phantom	Twin-SAM V5.0 (30deg probe tilt)
DAE Calibration Date	DAE4 Sn1675 2023-05-11	TSL Type	HBBL-600-10000
Software Version	16.2.4.2524		

Scans Setup

	Area Scan	Zoom Scan
Grid Extents [mm]	40.0 x 80.0	22.0 x 22.0 x 22.0
Grid Steps [mm]	10.0 x 10.0	4.0 x 4.0 x 1.4
Sensor Surface [mm]	3.0	1.4
Graded Grid	N/A	Yes
M2/M1 [%]		62.1
Dist 3dB Peak [mm]		7.4

Measurement Results

	Area Scan	Zoom Scan
psSAR1g [W/Kg]	7.58	7.92
psSAR10g [W/Kg]	2.11	2.23
Power Drift [dB]	N/A	0.02



System Performance Check Report for D5GHzV2 - SN1003

Exposure Conditions

Frequency [MHz] Channel Number	5250.000 0	TSL Permittivity	36.2
Group UID	CW 0--	TSL Conductivity [S/m]	4.71
Conversion Factor	5.59	Phantom Section TSL	Flat HSL

Hardware Setup

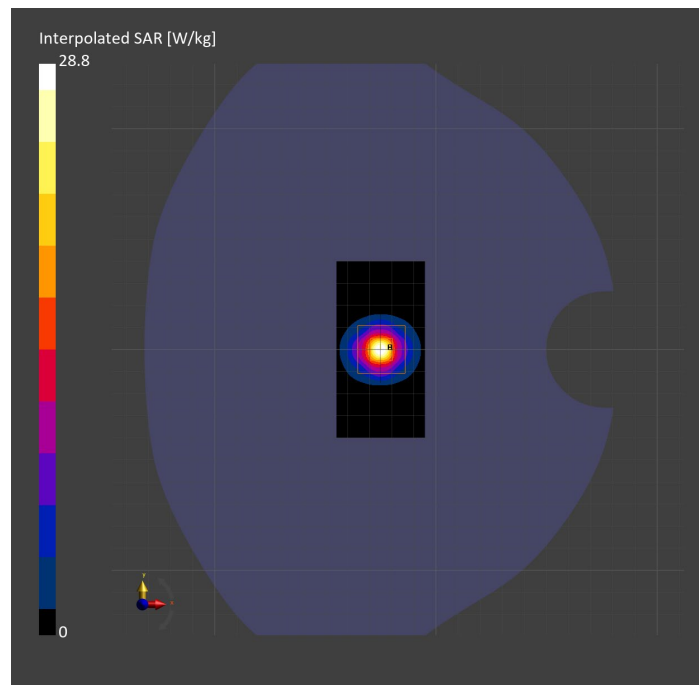
Probe Calibration Date	EX3DV4 - SN3929 2023-04-26	Phantom	Twin-SAM V5.0 (30deg probe tilt)
DAE Calibration Date	DAE4 Sn1675 2023-05-11	TSL Type	HBBL-600-10000
Software Version	16.2.4.2524		

Scans Setup

	Area Scan	Zoom Scan
Grid Extents [mm]	40.0 x 80.0	22.0 x 22.0 x 22.0
Grid Steps [mm]	10.0 x 10.0	4.0 x 4.0 x 1.4
Sensor Surface [mm]	3.0	1.4
Graded Grid	N/A	Yes
M2/M1 [%]		63.8
Dist 3dB Peak [mm]		7.4

Measurement Results

	Area Scan	Zoom Scan
psSAR1g [W/Kg]	6.88	7.23
psSAR10g [W/Kg]	1.94	2.07
Power Drift [dB]	N/A	-0.12



System Performance Check Report for D5GHzV2 - SN1138

Exposure Conditions

Frequency [MHz] Channel Number	5600.000 0	TSL Permittivity	35.6
Group UID	CW 0--	TSL Conductivity [S/m]	4.85
Conversion Factor	4.46	Phantom Section TSL	Flat HSL

Hardware Setup

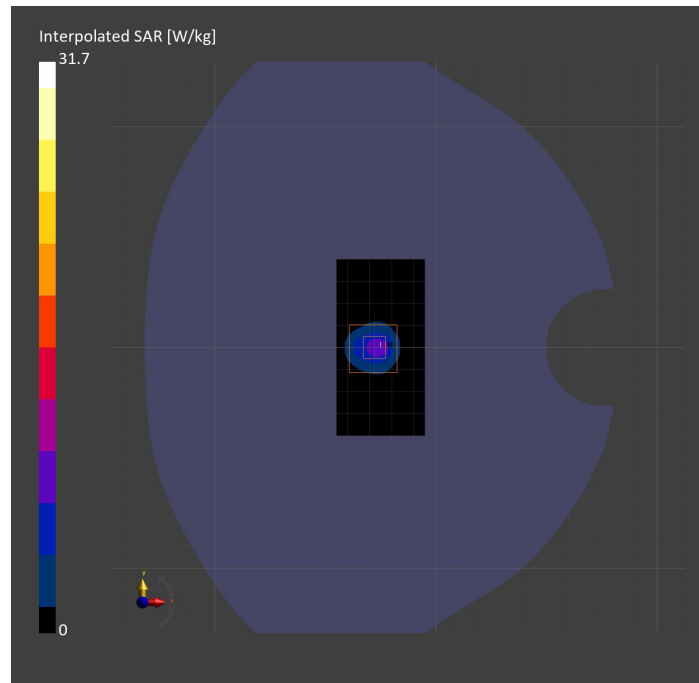
Probe Calibration Date	EX3DV4 - SN7585 2023-04-18	Phantom	Twin-SAM V5.0 (30deg probe tilt)
DAE Calibration Date	DAE4 Sn1797 2023-04-03	TSL Type	HBBL-600-10000
Software Version	16.2.4.2524		

Scans Setup

	Area Scan	Zoom Scan
Grid Extents [mm]	40.0 x 80.0	22.0 x 22.0 x 22.0
Grid Steps [mm]	10.0 x 10.0	4.0 x 4.0 x 1.4
Sensor Surface [mm]	3.0	1.4
Graded Grid	N/A	Yes
M2/M1 [%]		61.8
Dist 3dB Peak [mm]		7.2

Measurement Results

	Area Scan	Zoom Scan
psSAR1g [W/Kg]	6.69	7.60
psSAR10g [W/Kg]	1.97	2.14
Power Drift [dB]	N/A	0.00



System Performance Check Report for D2450V2 - SN899

Exposure Conditions

Frequency [MHz] Channel Number	2450.000 0	TSL Permittivity	38.4
Group UID	CW 0--	TSL Conductivity [S/m]	1.77
Conversion Factor	6.97	Phantom Section TSL	Flat HSL

Hardware Setup

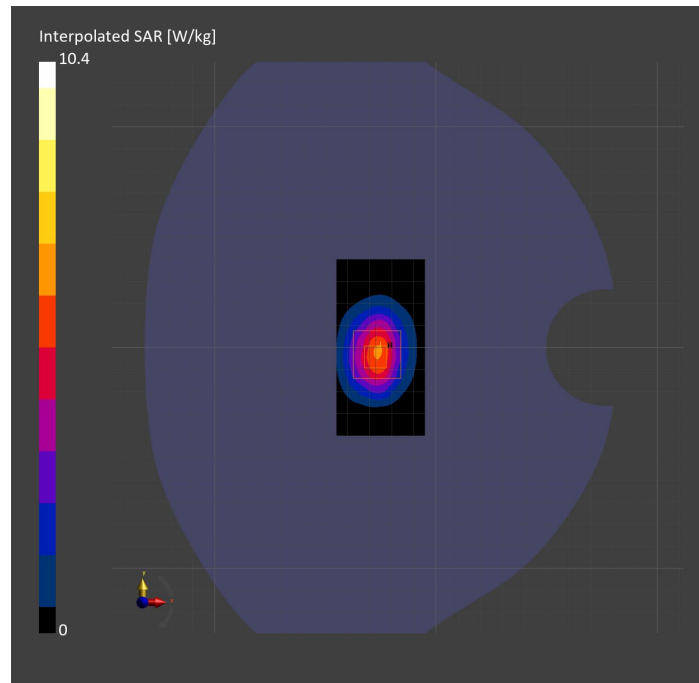
Probe Calibration Date	EX3DV4 - SN7820 2023-07-11	Phantom	Twin-SAM V5.0 (30deg probe tilt)
DAE Calibration Date	DAE4 Sn1434 2023-06-13	TSL Type	HBBL-600-10000
Software Version	16.2.4.2524		

Scans Setup

	Area Scan	Zoom Scan
Grid Extents [mm]	40.0 x 80.0	30.0 x 30.0 x 30.0
Grid Steps [mm]	10.0 x 10.0	5.0 x 5.0 x 1.5
Sensor Surface [mm]	3.0	1.4
Graded Grid	N/A	Yes
M2/M1 [%]		79.0
Dist 3dB Peak [mm]		9.0

Measurement Results

	Area Scan	Zoom Scan
psSAR1g [W/Kg]	4.85	5.01
psSAR10g [W/Kg]	2.29	2.33
Power Drift [dB]	N/A	-0.02



System Performance Check Report for D5GHzV2 - SN1138

Exposure Conditions

Frequency [MHz] Channel Number	5750.000 0	TSL Permittivity	35.4
Group UID	CW 0--	TSL Conductivity [S/m]	5.23
Conversion Factor	5.15	Phantom Section TSL	Flat HSL

Hardware Setup

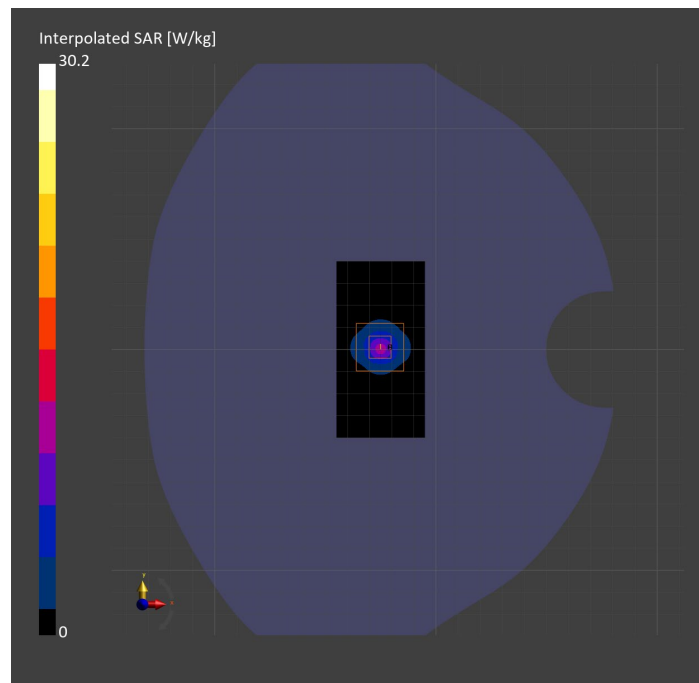
Probe Calibration Date	EX3DV4 - SN3902 2023-03-17	Phantom	Twin-SAM V5.0 (30deg probe tilt)
DAE Calibration Date	DAE4 Sn1439 2023-03-16	TSL Type	HBBL-600-10000
Software Version	16.2.4.2524		

Scans Setup

	Area Scan	Zoom Scan
Grid Extents [mm]	40.0 x 80.0	22.0 x 22.0 x 22.0
Grid Steps [mm]	10.0 x 10.0	4.0 x 4.0 x 1.4
Sensor Surface [mm]	3.0	1.4
Graded Grid	N/A	Yes
M2/M1 [%]		62.3
Dist 3dB Peak [mm]		7.6

Measurement Results

	Area Scan	Zoom Scan
psSAR1g [W/Kg]	6.86	7.07
psSAR10g [W/Kg]	1.95	2.03
Power Drift [dB]	N/A	-0.02



System Performance Check Report for D5GHzV2 - SN1138

Exposure Conditions

Frequency [MHz] Channel Number	5600.000 0	TSL Permittivity	35.5
Group UID	CW 0--	TSL Conductivity [S/m]	4.82
Conversion Factor	4.98	Phantom Section TSL	Flat HSL

Hardware Setup

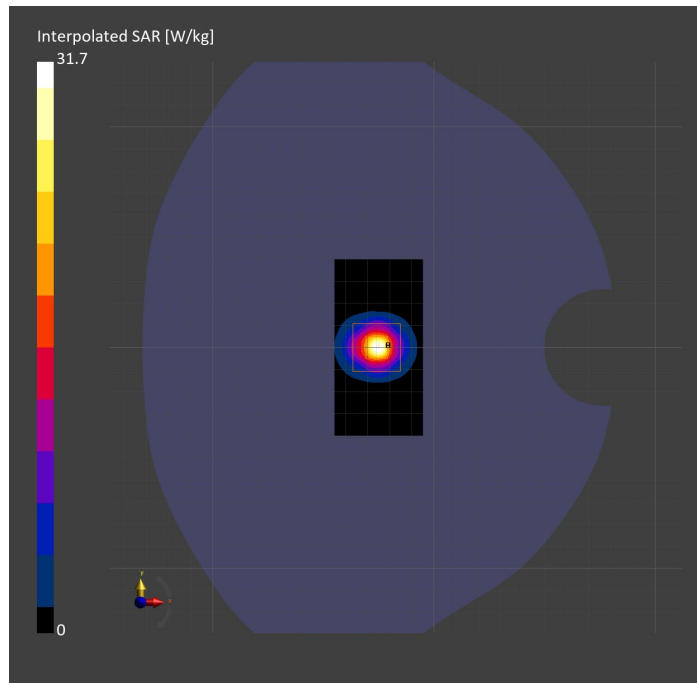
Probe Calibration Date	EX3DV4 - SN3902 2023-03-17	Phantom	Twin-SAM V5.0 (30deg probe tilt)
DAE Calibration Date	DAE4 Sn1797 2023-04-03	TSL Type	HBBL-600-10000
Software Version	16.2.4.2524		

Scans Setup

	Area Scan	Zoom Scan
Grid Extents [mm]	40.0 x 80.0	22.0 x 22.0 x 22.0
Grid Steps [mm]	10.0 x 10.0	4.0 x 4.0 x 1.4
Sensor Surface [mm]	3.0	1.4
Graded Grid	N/A	Yes
M2/M1 [%]		62.1
Dist 3dB Peak [mm]		7.2

Measurement Results

	Area Scan	Zoom Scan
psSAR1g [W/Kg]	6.92	7.50
psSAR10g [W/Kg]	1.96	2.12
Power Drift [dB]	N/A	0.03



System Performance Check Report for D5GHzV2 - SN1003

Exposure Conditions

Frequency [MHz] Channel Number	5250.000 0	TSL Permittivity	37.6
Group UID	CW 0--	TSL Conductivity [S/m]	4.53
Conversion Factor	5.61	Phantom Section TSL	Flat HSL

Hardware Setup

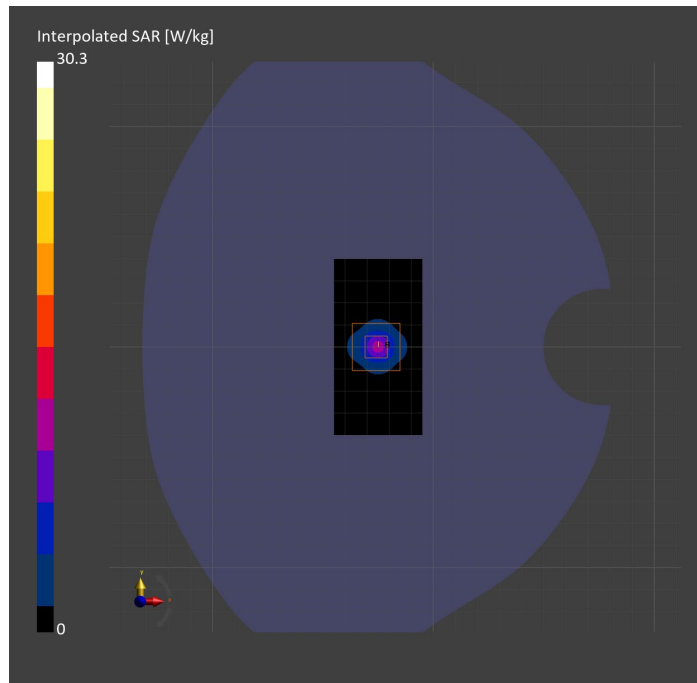
Probe Calibration Date	EX3DV4 - SN3902 2023-03-17	Phantom	Twin-SAM V5.0 (30deg probe tilt)
DAE Calibration Date	DAE4 Sn1797 2023-04-03	TSL Type	HBBL-600-10000
Software Version	16.2.4.2524		

Scans Setup

	Area Scan	Zoom Scan
Grid Extents [mm]	40.0 x 80.0	22.0 x 22.0 x 22.0
Grid Steps [mm]	10.0 x 10.0	4.0 x 4.0 x 1.4
Sensor Surface [mm]	3.0	1.4
Graded Grid	N/A	Yes
M2/M1 [%]		63.3
Dist 3dB Peak [mm]		6.9

Measurement Results

	Area Scan	Zoom Scan
psSAR1g [W/Kg]	6.87	7.38
psSAR10g [W/Kg]	1.95	2.10
Power Drift [dB]	N/A	0.02



System Performance Check Report for D5GHzV2 - SN1138

Exposure Conditions

Frequency [MHz] Channel Number	5750.000 0	TSL Permittivity	35.7
Group UID	CW 0--	TSL Conductivity [S/m]	5.01
Conversion Factor	4.86	Phantom Section TSL	Flat HSL

Hardware Setup

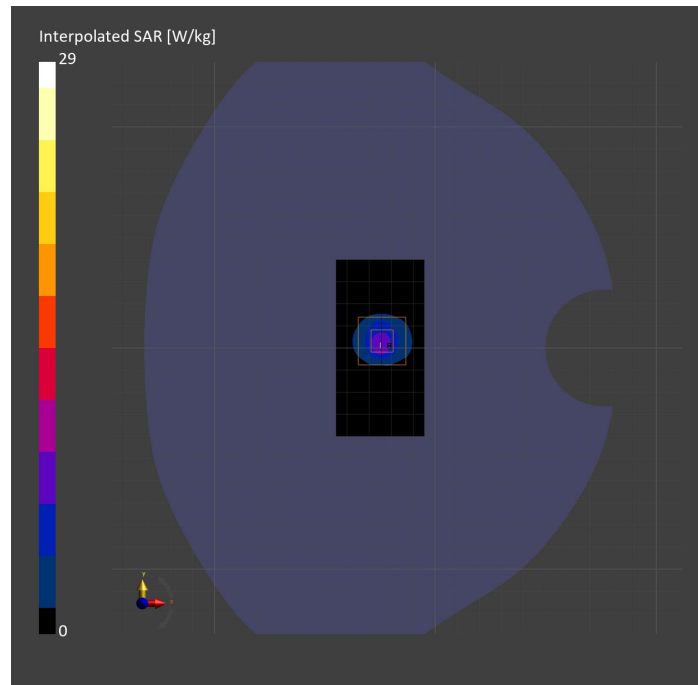
Probe Calibration Date	EX3DV4 - SN7810 2023-04-25	Phantom	Twin-SAM V8.0 (30deg probe tilt)
DAE Calibration Date	DAE4 Sn1439 2023-03-16	TSL Type	HBBL-600-10000
Software Version	16.2.4.2524		

Scans Setup

	Area Scan	Zoom Scan
Grid Extents [mm]	40.0 x 80.0	22.0 x 22.0 x 22.0
Grid Steps [mm]	10.0 x 10.0	4.0 x 4.0 x 1.4
Sensor Surface [mm]	3.0	1.4
Graded Grid	N/A	Yes
M2/M1 [%]		61.5
Dist 3dB Peak [mm]		7.4

Measurement Results

	Area Scan	Zoom Scan
psSAR1g [W/Kg]	6.27	7.07
psSAR10g [W/Kg]	1.88	2.04
Power Drift [dB]	N/A	-0.00



System Performance Check Report for D5GHzV2 - SN1138

Exposure Conditions

Frequency [MHz] Channel Number	5250.000 0	TSL Permittivity	36.7
Group UID	CW 0--	TSL Conductivity [S/m]	4.51
Conversion Factor	5.56	Phantom Section TSL	Flat HSL

Hardware Setup

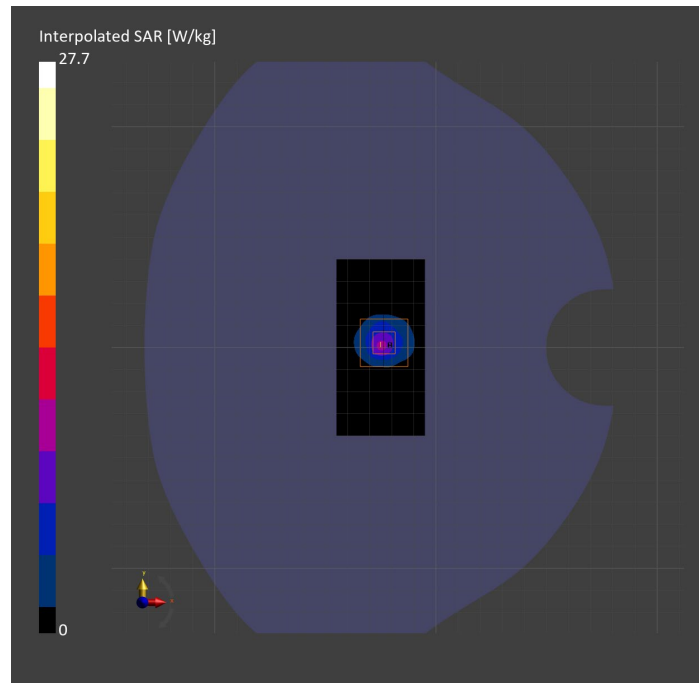
Probe Calibration Date	EX3DV4 - SN7810 2023-04-25	Phantom	Twin-SAM V8.0 (30deg probe tilt)
DAE Calibration Date	DAE4 Sn1439 2023-03-16	TSL Type	HBBL-600-10000
Software Version	16.2.4.2524		

Scans Setup

	Area Scan	Zoom Scan
Grid Extents [mm]	40.0 x 80.0	22.0 x 22.0 x 22.0
Grid Steps [mm]	10.0 x 10.0	4.0 x 4.0 x 1.4
Sensor Surface [mm]	3.0	1.4
Graded Grid	N/A	Yes
M2/M1 [%]		64.1
Dist 3dB Peak [mm]		7.4

Measurement Results

	Area Scan	Zoom Scan
psSAR1g [W/Kg]	6.31	7.20
psSAR10g [W/Kg]	1.89	2.09
Power Drift [dB]	N/A	0.03



System Performance Check Report for D2600V2 - SN1036

Exposure Conditions

Frequency [MHz] Channel Number	2600.000 0	TSL Permittivity	40.1
Group UID	CW 0--	TSL Conductivity [S/m]	1.90
Conversion Factor	6.72	Phantom Section TSL	Flat HSL

Hardware Setup

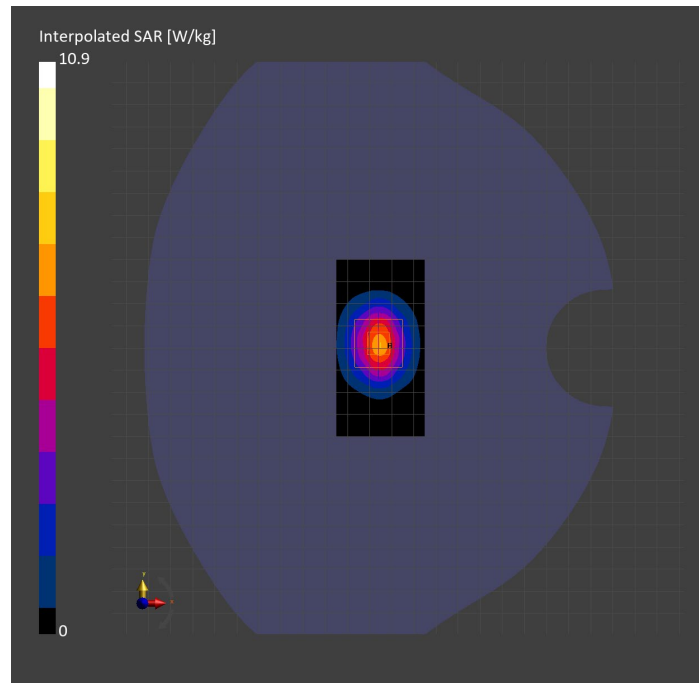
Probe Calibration Date	EX3DV4 - SN3749 2023-01-27	Phantom	Twin-SAM V8.0 (30deg probe tilt)
DAE Calibration Date	DAE4 Sn1357 2023-01-27	TSL Type	HBBL-600-10000
Software Version	16.2.4.2524		

Scans Setup

	Area Scan	Zoom Scan
Grid Extents [mm]	40.0 x 80.0	30.0 x 30.0 x 30.0
Grid Steps [mm]	10.0 x 10.0	5.0 x 5.0 x 1.5
Sensor Surface [mm]	3.0	1.4
Graded Grid	N/A	Yes
M2/M1 [%]		80.6
Dist 3dB Peak [mm]		9.1

Measurement Results

	Area Scan	Zoom Scan
psSAR1g [W/Kg]	5.30	5.38
psSAR10g [W/Kg]	2.40	2.49
Power Drift [dB]	N/A	0.01



System Performance Check Report for D835V2 - SN4d002

Exposure Conditions

Frequency [MHz] Channel Number	835.000 0	TSL Permittivity	43.6
Group UID	CW 0--	TSL Conductivity [S/m]	0.901
Conversion Factor	7.83	Phantom Section TSL	Flat HSL

Hardware Setup

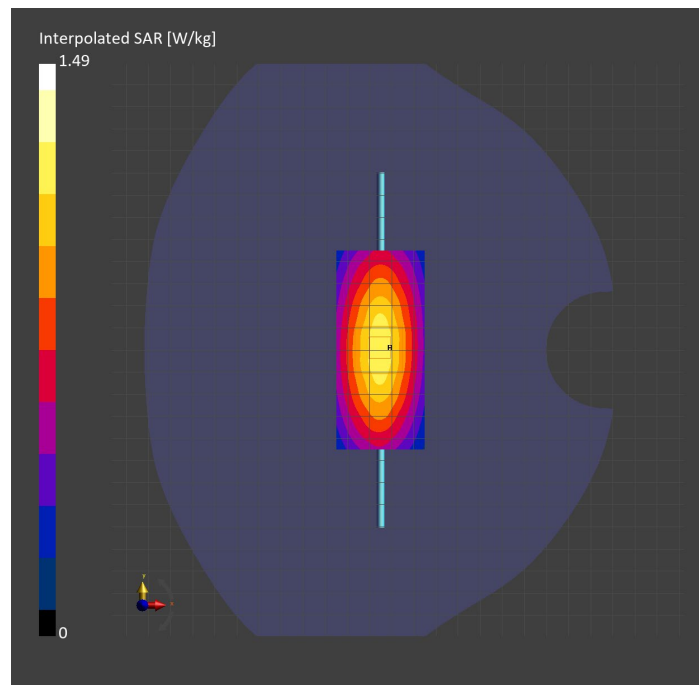
Probe Calibration Date	EX3DV4 - SN3749 2023-01-27	Phantom	Twin-SAM V8.0 (30deg probe tilt)
DAE Calibration Date	DAE4 Sn1357 2023-01-27	TSL Type	HBBL-600-10000
Software Version	16.2.4.2524		

Scans Setup

	Area Scan	Zoom Scan
Grid Extents [mm]	40.0 x 90.0	30.0 x 30.0 x 30.0
Grid Steps [mm]	10.0 x 15.0	6.0 x 6.0 x 1.5
Sensor Surface [mm]	3.0	1.4
Graded Grid	N/A	Yes
M2/M1 [%]		90.9
Dist 3dB Peak [mm]		16.4

Measurement Results

	Area Scan	Zoom Scan
psSAR1g [W/Kg]	1.06	1.04
psSAR10g [W/Kg]	0.695	0.695
Power Drift [dB]	N/A	-0.00



System Performance Check Report for D2300V2 - SN1002

Exposure Conditions

Frequency [MHz] Channel Number	2300.000 0	TSL Permittivity	38.2
Group UID	CW 0--	TSL Conductivity [S/m]	1.70
Conversion Factor	6.87	Phantom Section TSL	Flat HSL

Hardware Setup

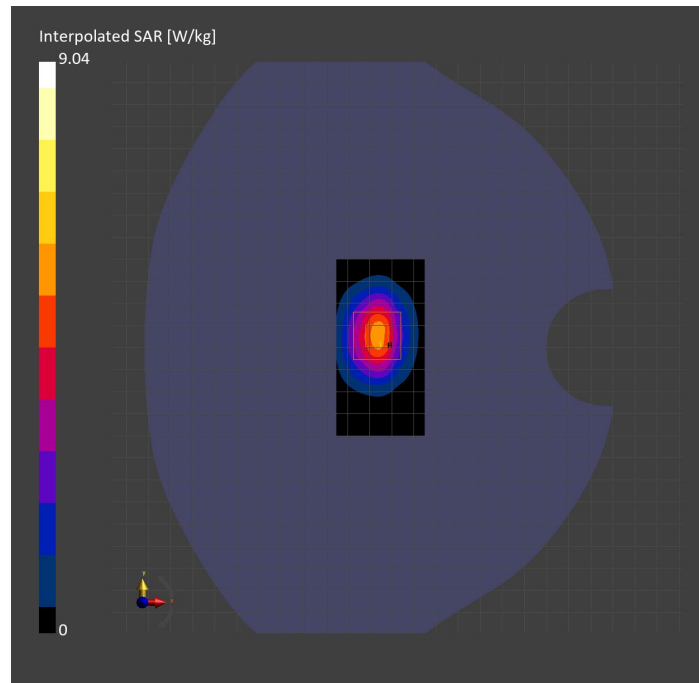
Probe Calibration Date	EX3DV4 - SN3749 2023-01-27	Phantom	Twin-SAM V8.0 (30deg probe tilt)
DAE Calibration Date	DAE4 Sn1357 2023-01-27	TSL Type	HBBL-600-10000
Software Version	16.2.4.2524		

Scans Setup

	Area Scan	Zoom Scan
Grid Extents [mm]	40.0 x 80.0	30.0 x 30.0 x 30.0
Grid Steps [mm]	10.0 x 10.0	5.0 x 5.0 x 1.5
Sensor Surface [mm]	3.0	1.4
Graded Grid	N/A	Yes
M2/M1 [%]		81.0
Dist 3dB Peak [mm]		9.3

Measurement Results

	Area Scan	Zoom Scan
psSAR1g [W/Kg]	4.47	4.57
psSAR10g [W/Kg]	2.17	2.18
Power Drift [dB]	N/A	-0.02



System Performance Check Report for D1750V2 - SN1053

Exposure Conditions

Frequency [MHz] Channel Number	1750.000 0	TSL Permittivity	41.3
Group UID	CW 0--	TSL Conductivity [S/m]	1.31
Conversion Factor	8.98	Phantom Section TSL	Flat HSL

Hardware Setup

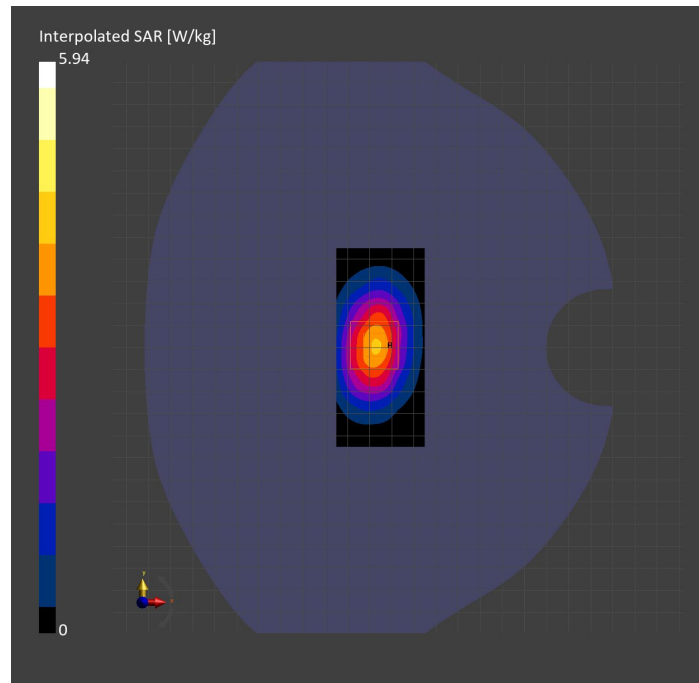
Probe Calibration Date	EX3DV4 - SN3989 2023-01-26	Phantom	Twin-SAM V8.0 (30deg probe tilt)
DAE Calibration Date	DAE4 Sn1257 2022-09-20	TSL Type	HBBL-600-10000
Software Version	16.2.4.2524		

Scans Setup

	Area Scan	Zoom Scan
Grid Extents [mm]	40.0 x 90.0	30.0 x 30.0 x 30.0
Grid Steps [mm]	10.0 x 15.0	6.0 x 6.0 x 1.5
Sensor Surface [mm]	3.0	1.4
Graded Grid	N/A	Yes
M2/M1 [%]		84.0
Dist 3dB Peak [mm]		10.8

Measurement Results

	Area Scan	Zoom Scan
psSAR1g [W/Kg]	3.31	3.37
psSAR10g [W/Kg]	1.82	1.83
Power Drift [dB]	N/A	-0.04



System Performance Check Report for D3700V2 - SN1110

Exposure Conditions

Frequency [MHz] Channel Number	3700.000 0	TSL Permittivity	38.5
Group UID	CW 0--	TSL Conductivity [S/m]	2.99
Conversion Factor	6.94	Phantom Section TSL	Flat HSL

Hardware Setup

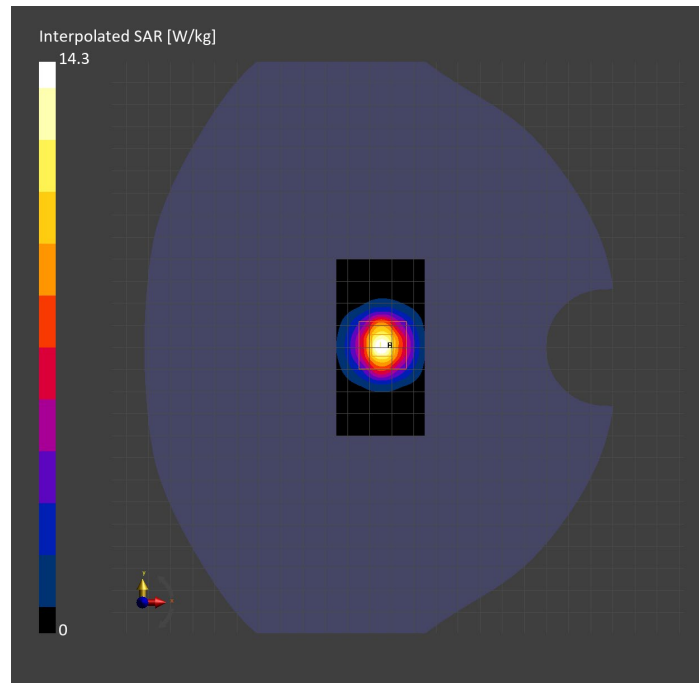
Probe Calibration Date	EX3DV4 - SN3989 2023-01-26	Phantom	Twin-SAM V8.0 (30deg probe tilt)
DAE Calibration Date	DAE4 Sn1257 2022-09-20	TSL Type	HBBL-600-10000
Software Version	16.2.4.2524		

Scans Setup

	Area Scan	Zoom Scan
Grid Extents [mm]	40.0 x 80.0	28.0 x 28.0 x 28.0
Grid Steps [mm]	10.0 x 10.0	5.0 x 5.0 x 1.4
Sensor Surface [mm]	3.0	1.4
Graded Grid	N/A	Yes
M2/M1 [%]		78.2
Dist 3dB Peak [mm]		9.0

Measurement Results

	Area Scan	Zoom Scan
psSAR1g [W/Kg]	5.85	5.81
psSAR10g [W/Kg]	2.19	2.23
Power Drift [dB]	N/A	0.01



System Performance Check Report for D3500V2 - SN1011

Exposure Conditions

Frequency [MHz] Channel Number	3500.000 0	TSL Permittivity	38.9
Group UID	CW 0--	TSL Conductivity [S/m]	2.80
Conversion Factor	6.78	Phantom Section TSL	Flat HSL

Hardware Setup

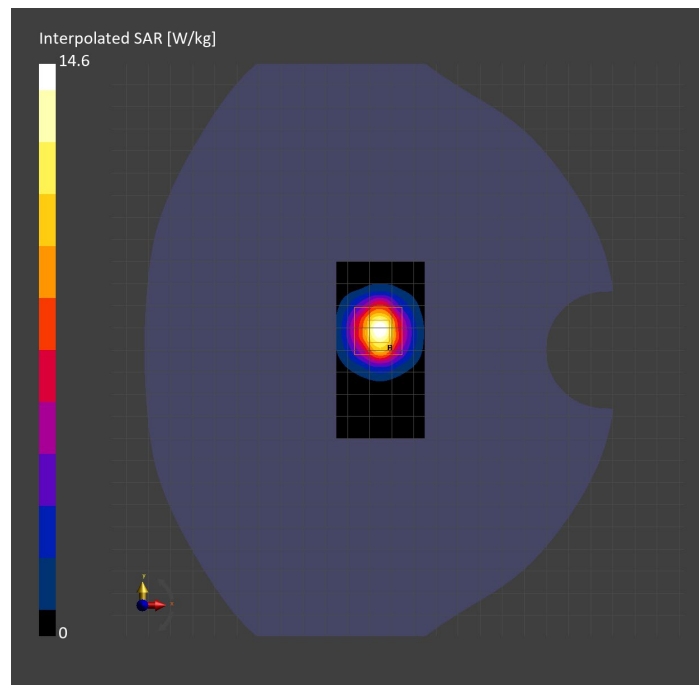
Probe Calibration Date	EX3DV4 - SN3989 2023-01-26	Phantom	Twin-SAM V8.0 (30deg probe tilt)
DAE Calibration Date	DAE4 Sn1257 2022-09-20	TSL Type	HBBL-600-10000
Software Version	16.2.4.2524		

Scans Setup

	Area Scan	Zoom Scan
Grid Extents [mm]	40.0 x 80.0	28.0 x 28.0 x 28.0
Grid Steps [mm]	10.0 x 10.0	5.0 x 5.0 x 1.4
Sensor Surface [mm]	3.0	1.4
Graded Grid	N/A	Yes
M2/M1 [%]		77.9
Dist 3dB Peak [mm]		8.6

Measurement Results

	Area Scan	Zoom Scan
psSAR1g [W/Kg]	5.83	6.02
psSAR10g [W/Kg]	2.26	2.37
Power Drift [dB]	N/A	0.01



System Performance Check Report for D1640V2 - SN334

Exposure Conditions

Frequency [MHz] Channel Number	1640.000 0	TSL Permittivity	40.9
Group UID	CW 0--	TSL Conductivity [S/m]	1.25
Conversion Factor	8.86	Phantom Section TSL	Flat HSL

Hardware Setup

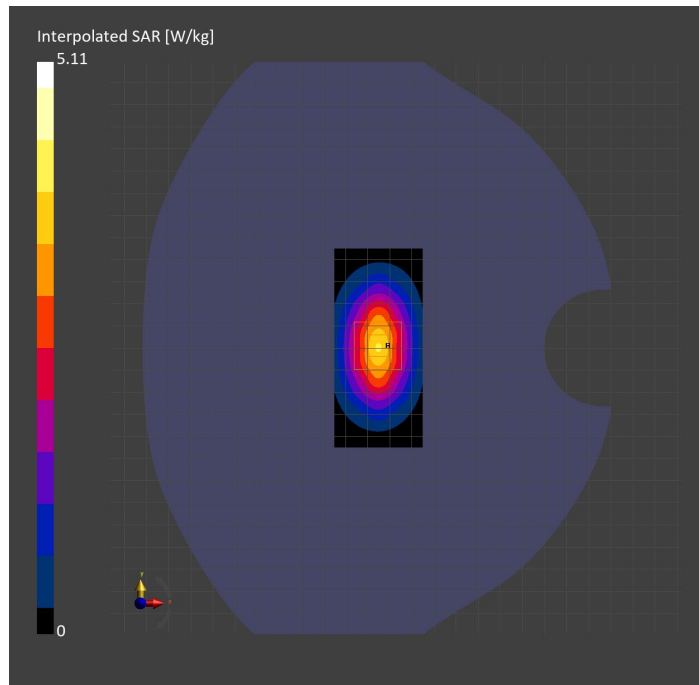
Probe Calibration Date	EX3DV4 - SN3989 2023-01-26	Phantom	Twin-SAM V8.0 (30deg probe tilt)
DAE Calibration Date	DAE4 Sn1257 2022-09-20	TSL Type	HBBL-600-10000
Software Version	16.2.4.2524		

Scans Setup

	Area Scan	Zoom Scan
Grid Extents [mm]	40.0 x 90.0	30.0 x 30.0 x 30.0
Grid Steps [mm]	10.0 x 15.0	6.0 x 6.0 x 1.5
Sensor Surface [mm]	3.0	1.4
Graded Grid	N/A	Yes
M2/M1 [%]		88.1
Dist 3dB Peak [mm]		10.8

Measurement Results

	Area Scan	Zoom Scan
psSAR1g [W/Kg]	3.13	3.07
psSAR10g [W/Kg]	1.72	1.71
Power Drift [dB]	N/A	0.00



System Performance Check Report for D1750V2 - SN1050

Exposure Conditions

Frequency [MHz] Channel Number	1750.000 0	TSL Permittivity	38.2
Group UID	CW 0--	TSL Conductivity [S/m]	1.32
Conversion Factor	8.66	Phantom Section TSL	Flat HSL

Hardware Setup

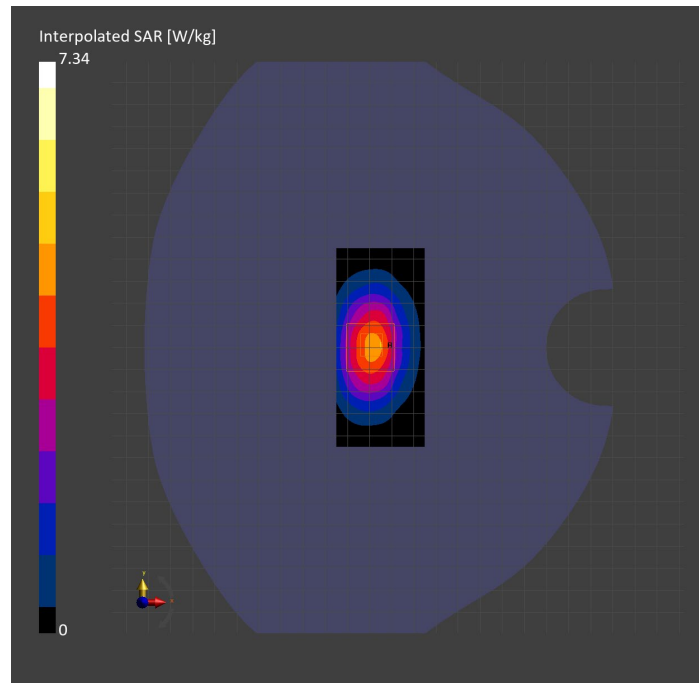
Probe Calibration Date	EX3DV4 - SN7569 2023-04-18	Phantom	Twin-SAM V8.0 (30deg probe tilt)
DAE Calibration Date	DAE4 Sn1547 2023-04-18	TSL Type	HBBL-600-10000
Software Version	16.2.4.2524		

Scans Setup

	Area Scan	Zoom Scan
Grid Extents [mm]	40.0 x 90.0	30.0 x 30.0 x 30.0
Grid Steps [mm]	10.0 x 15.0	6.0 x 6.0 x 1.5
Sensor Surface [mm]	3.0	1.4
Graded Grid	N/A	Yes
M2/M1 [%]		80.7
Dist 3dB Peak [mm]		10.8

Measurement Results

	Area Scan	Zoom Scan
psSAR1g [W/Kg]	3.76	3.83
psSAR10g [W/Kg]	2.08	2.06
Power Drift [dB]	N/A	0.01



System Performance Check Report for D1900V2 - SN5d163

Exposure Conditions

Frequency [MHz] Channel Number	1900.000 0	TSL Permittivity	40.3
Group UID	CW 0--	TSL Conductivity [S/m]	1.42
Conversion Factor	8.43	Phantom Section TSL	Flat HSL

Hardware Setup

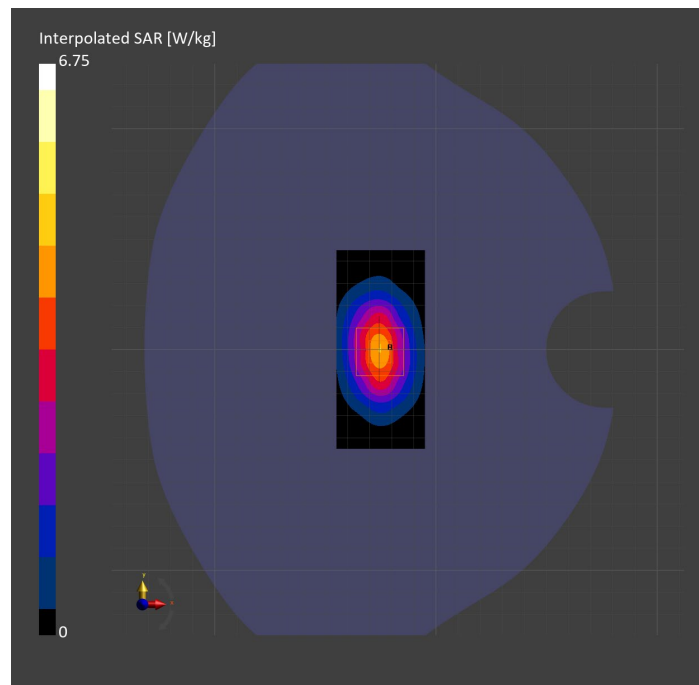
Probe Calibration Date	EX3DV4 - SN3991 2022-09-22	Phantom	Twin-SAM V8.0 (30deg probe tilt)
DAE Calibration Date	DAE4 Sn1674 2023-05-11	TSL Type	HBBL-600-10000
Software Version	16.2.4.2524		

Scans Setup

	Area Scan	Zoom Scan
Grid Extents [mm]	40.0 x 90.0	30.0 x 30.0 x 30.0
Grid Steps [mm]	10.0 x 15.0	6.0 x 6.0 x 1.5
Sensor Surface [mm]	3.0	1.4
Graded Grid	N/A	Yes
M2/M1 [%]		81.7
Dist 3dB Peak [mm]		10.3

Measurement Results

	Area Scan	Zoom Scan
psSAR1g [W/Kg]	3.59	3.56
psSAR10g [W/Kg]	1.87	1.87
Power Drift [dB]	N/A	-0.01



System Performance Check Report for D835V2 - SN4d002

Exposure Conditions

Frequency [MHz] Channel Number	835.000 0	TSL Permittivity	40.7
Group UID	CW 0--	TSL Conductivity [S/m]	0.881
Conversion Factor	8.76	Phantom Section TSL	Flat HSL

Hardware Setup

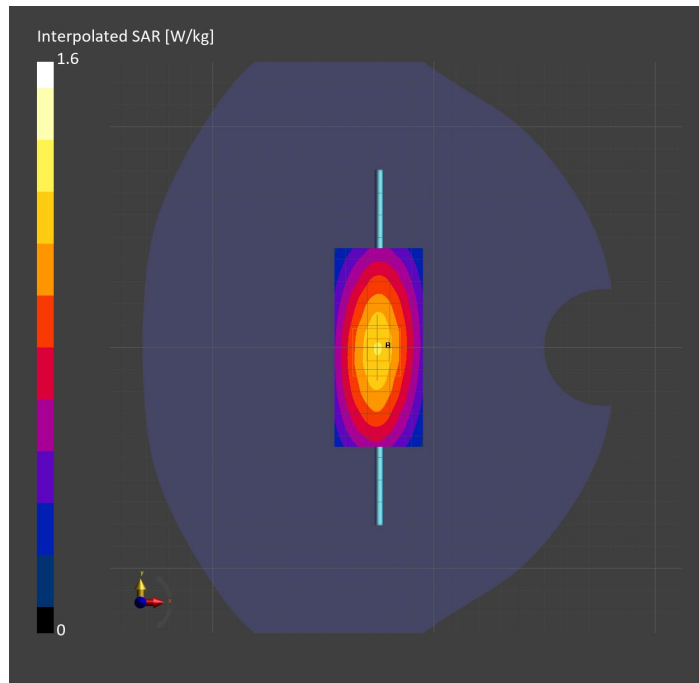
Probe Calibration Date	EX3DV4 - SN7806 2023-04-04	Phantom	Twin-SAM V8.0 (30deg probe tilt)
DAE Calibration Date	DAE4 Sn1784 2023-04-03	TSL Type	HBBL-600-10000
Software Version	16.2.4.2524		

Scans Setup

	Area Scan	Zoom Scan
Grid Extents [mm]	40.0 x 90.0	30.0 x 30.0 x 30.0
Grid Steps [mm]	10.0 x 15.0	6.0 x 6.0 x 1.5
Sensor Surface [mm]	3.0	1.4
Graded Grid	N/A	Yes
M2/M1 [%]		86.5
Dist 3dB Peak [mm]		17.8

Measurement Results

	Area Scan	Zoom Scan
psSAR1g [W/Kg]	1.04	1.04
psSAR10g [W/Kg]	0.685	0.685
Power Drift [dB]	N/A	-0.01



System Performance Check Report for D2300V2 - SN1002

Exposure Conditions

Frequency [MHz] Channel Number	2300.000 0	TSL Permittivity	37.8
Group UID	CW 0--	TSL Conductivity [S/m]	1.60
Conversion Factor	7.31	Phantom Section TSL	Flat HSL

Hardware Setup

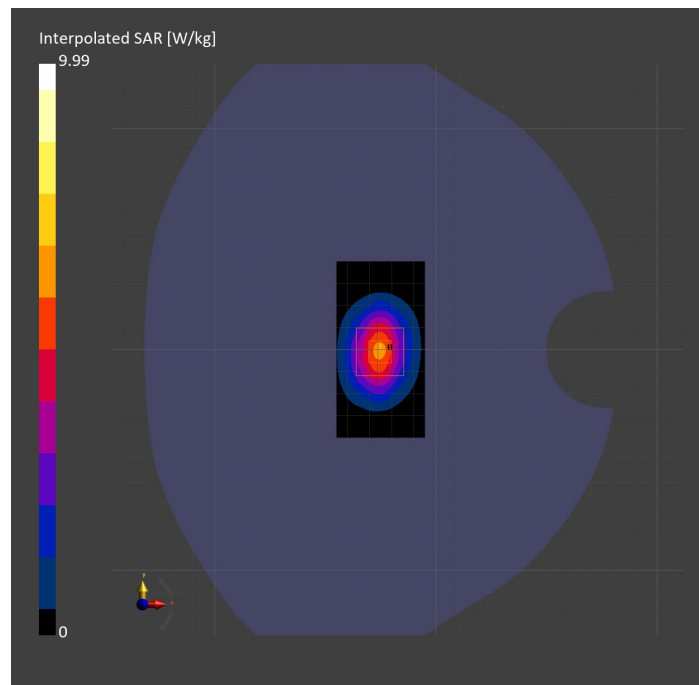
Probe Calibration Date	EX3DV4 - SN7806 2023-04-04	Phantom	Twin-SAM V8.0 (30deg probe tilt)
DAE Calibration Date	DAE4 Sn1784 2023-04-03	TSL Type	HBBL-600-10000
Software Version	16.2.4.2524		

Scans Setup

	Area Scan	Zoom Scan
Grid Extents [mm]	40.0 x 80.0	30.0 x 30.0 x 30.0
Grid Steps [mm]	10.0 x 10.0	5.0 x 5.0 x 1.5
Sensor Surface [mm]	3.0	1.4
Graded Grid	N/A	Yes
M2/M1 [%]		79.2
Dist 3dB Peak [mm]		9.5

Measurement Results

	Area Scan	Zoom Scan
psSAR1g [W/Kg]	4.76	4.95
psSAR10g [W/Kg]	2.29	2.43
Power Drift [dB]	N/A	0.12



System Performance Check Report for D1900V2 - SN5d163

Exposure Conditions

Frequency [MHz] Channel Number	1900.000 0	TSL Permittivity	40.2
Group UID	CW 0--	TSL Conductivity [S/m]	1.43
Conversion Factor	7.53	Phantom Section TSL	Flat HSL

Hardware Setup

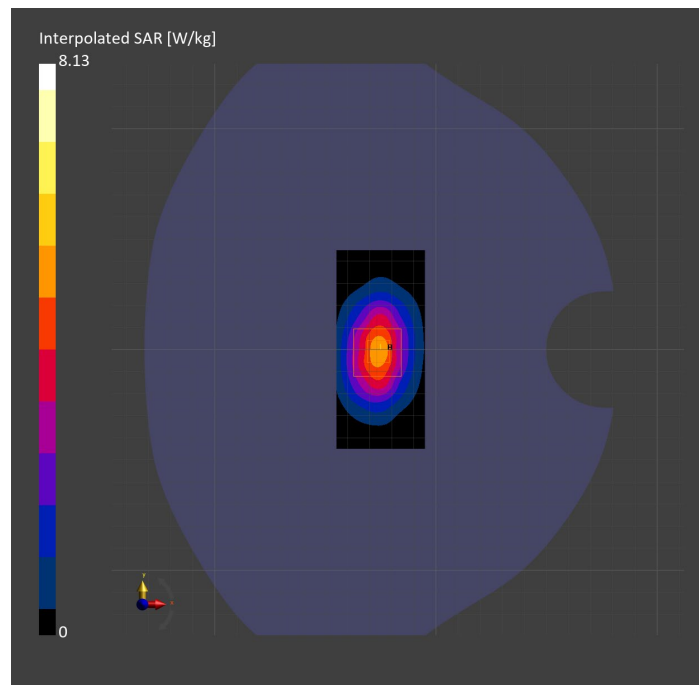
Probe Calibration Date	EX3DV4 - SN7807 2023-04-11	Phantom	Twin-SAM V8.0 (30deg probe tilt)
DAE Calibration Date	DAE4 Sn1799 2023-04-04	TSL Type	HBBL-600-10000
Software Version	16.2.4.2524		

Scans Setup

	Area Scan	Zoom Scan
Grid Extents [mm]	40.0 x 90.0	30.0 x 30.0 x 30.0
Grid Steps [mm]	10.0 x 15.0	6.0 x 6.0 x 1.5
Sensor Surface [mm]	3.0	1.4
Graded Grid	N/A	Yes
M2/M1 [%]		81.2
Dist 3dB Peak [mm]		10.8

Measurement Results

	Area Scan	Zoom Scan
psSAR1g [W/Kg]	4.23	4.25
psSAR10g [W/Kg]	2.22	2.22
Power Drift [dB]	N/A	-0.01



System Performance Check Report for D1900V2 - SN5d163

Exposure Conditions

Frequency [MHz] Channel Number	1900.000 0	TSL Permittivity	39.9
Group UID	CW 0--	TSL Conductivity [S/m]	1.44
Conversion Factor	7.53	Phantom Section TSL	Flat HSL

Hardware Setup

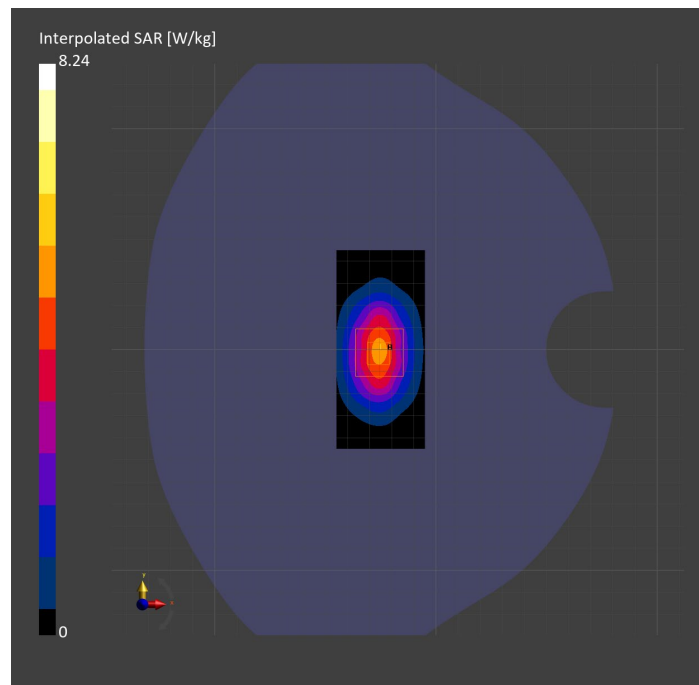
Probe Calibration Date	EX3DV4 - SN7807 2023-04-11	Phantom	Twin-SAM V8.0 (30deg probe tilt)
DAE Calibration Date	DAE4 Sn1799 2023-04-04	TSL Type	HBBL-600-10000
Software Version	16.2.4.2524		

Scans Setup

	Area Scan	Zoom Scan
Grid Extents [mm]	40.0 x 90.0	30.0 x 30.0 x 30.0
Grid Steps [mm]	10.0 x 15.0	6.0 x 6.0 x 1.5
Sensor Surface [mm]	3.0	1.4
Graded Grid	N/A	Yes
M2/M1 [%]		80.2
Dist 3dB Peak [mm]		9.6

Measurement Results

	Area Scan	Zoom Scan
psSAR1g [W/Kg]	4.16	4.19
psSAR10g [W/Kg]	2.17	2.17
Power Drift [dB]	N/A	-0.04



System Performance Check Report for D2450V2 - SN899

Exposure Conditions

Frequency [MHz] Channel Number	2450.000 0	TSL Permittivity	37.7
Group UID	CW 0--	TSL Conductivity [S/m]	1.87
Conversion Factor	7.04	Phantom Section TSL	Flat HSL

Hardware Setup

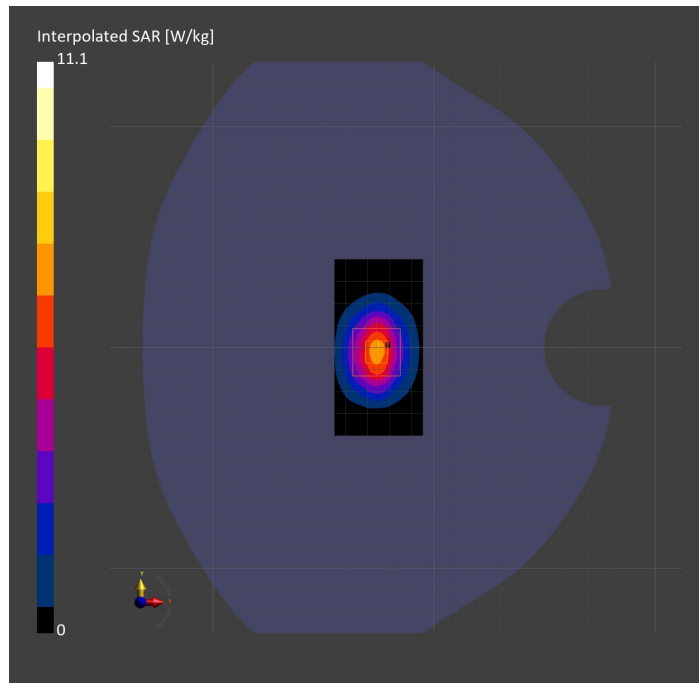
Probe Calibration Date	EX3DV4 - SN7807 2023-04-11	Phantom	Twin-SAM V8.0 (30deg probe tilt)
DAE Calibration Date	DAE4 Sn1799 2023-04-04	TSL Type	HBBL-600-10000
Software Version	16.2.4.2524		

Scans Setup

	Area Scan	Zoom Scan
Grid Extents [mm]	40.0 x 80.0	30.0 x 30.0 x 30.0
Grid Steps [mm]	10.0 x 10.0	5.0 x 5.0 x 1.5
Sensor Surface [mm]	3.0	1.4
Graded Grid	N/A	Yes
M2/M1 [%]		80.4
Dist 3dB Peak [mm]		9.9

Measurement Results

	Area Scan	Zoom Scan
psSAR1g [W/Kg]	5.44	5.46
psSAR10g [W/Kg]	2.57	2.58
Power Drift [dB]	N/A	-0.01



System Performance Check Report for D750V3 - SN1019

Exposure Conditions

Frequency [MHz] Channel Number	750.000 0	TSL Permittivity	42.0
Group UID	CW 0--	TSL Conductivity [S/m]	0.878
Conversion Factor	10.62	Phantom Section TSL	Flat HSL

Hardware Setup

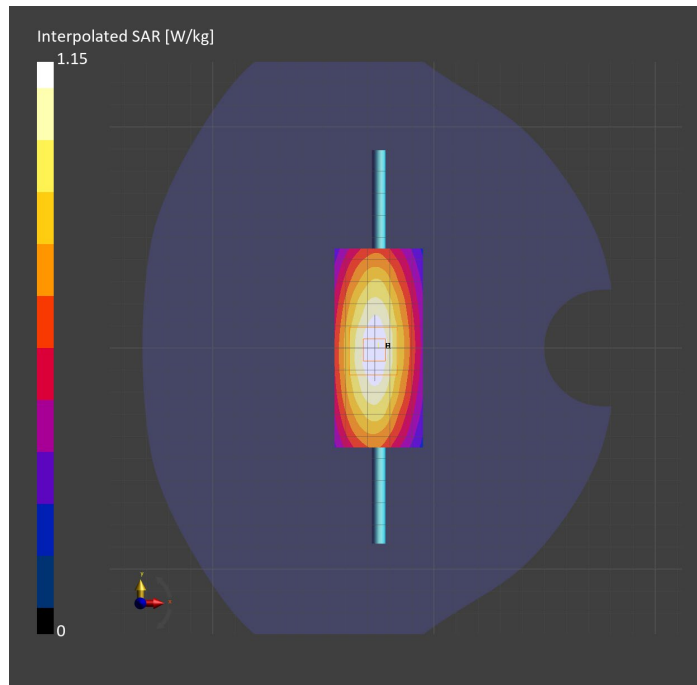
Probe Calibration Date	EX3DV4 - SN7589 2023-04-18	Phantom	Twin-SAM V5.0 (30deg probe tilt)
DAE Calibration Date	DAE4 Sn1544 2023-01-24	TSL Type	HBBL-600-10000
Software Version	16.2.4.2524		

Scans Setup

	Area Scan	Zoom Scan
Grid Extents [mm]	40.0 x 90.0	30.0 x 30.0 x 30.0
Grid Steps [mm]	10.0 x 15.0	6.0 x 6.0 x 1.5
Sensor Surface [mm]	3.0	1.4
Graded Grid	N/A	Yes
M2/M1 [%]		88.2
Dist 3dB Peak [mm]		> 15.0

Measurement Results

	Area Scan	Zoom Scan
psSAR1g [W/Kg]	0.779	0.775
psSAR10g [W/Kg]	0.521	0.518
Power Drift [dB]	N/A	-0.02



System Performance Check Report for D2600V2 - SN1036

Exposure Conditions

Frequency [MHz] Channel Number	2600.000 0	TSL Permittivity	39.6
Group UID	CW 0--	TSL Conductivity [S/m]	1.91
Conversion Factor	7.64	Phantom Section TSL	Flat HSL

Hardware Setup

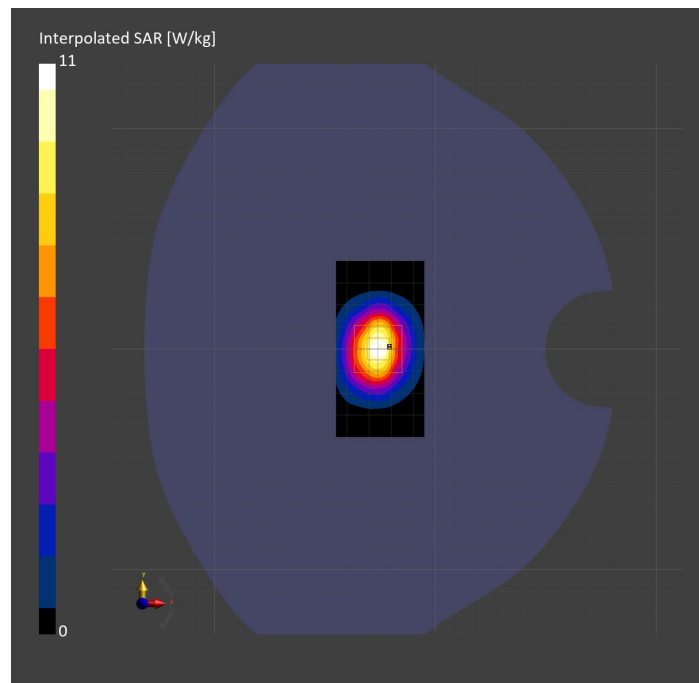
Probe Calibration Date	EX3DV4 - SN7589 2023-04-18	Phantom	Twin-SAM V5.0 (30deg probe tilt)
DAE Calibration Date	DAE4 Sn1544 2023-01-24	TSL Type	HBBL-600-10000
Software Version	16.2.4.2524		

Scans Setup

	Area Scan	Zoom Scan
Grid Extents [mm]	40.0 x 80.0	30.0 x 30.0 x 30.0
Grid Steps [mm]	10.0 x 10.0	5.0 x 5.0 x 1.5
Sensor Surface [mm]	3.0	1.4
Graded Grid	N/A	Yes
M2/M1 [%]		77.9
Dist 3dB Peak [mm]		9.0

Measurement Results

	Area Scan	Zoom Scan
psSAR1g [W/Kg]	5.07	5.13
psSAR10g [W/Kg]	2.32	2.39
Power Drift [dB]	N/A	-0.04



System Performance Check Report for D750V3 - SN1019

Exposure Conditions

Frequency [MHz] Channel Number	750.000 0	TSL Permittivity	41.6
Group UID	CW 0--	TSL Conductivity [S/m]	0.913
Conversion Factor	8.93	Phantom Section TSL	Flat HSL

Hardware Setup

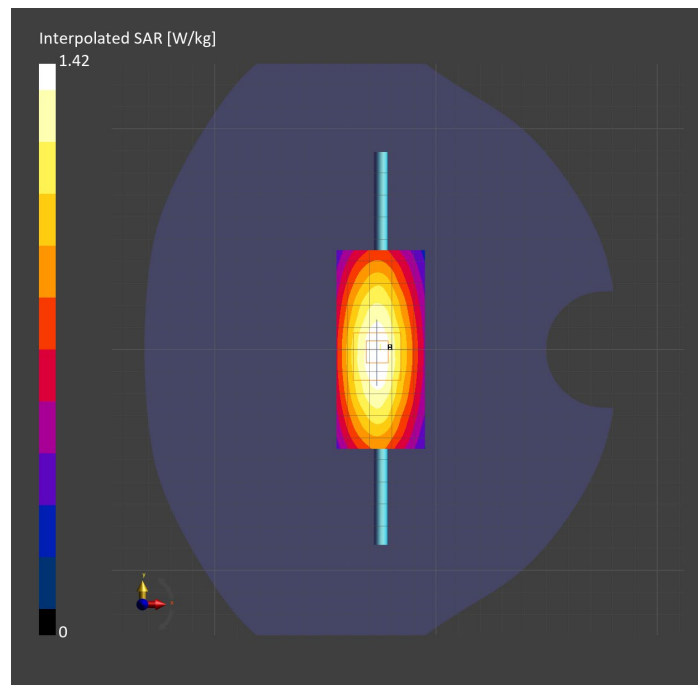
Probe Calibration Date	EX3DV4 - SN7448 2023-02-14	Phantom	Twin-SAM V5.0 (30deg probe tilt)
DAE Calibration Date	DAE4 Sn1472 2023-01-23	TSL Type	HBBL-600-10000
Software Version	16.2.4.2524		

Scans Setup

	Area Scan	Zoom Scan
Grid Extents [mm]	40.0 x 90.0	30.0 x 30.0 x 30.0
Grid Steps [mm]	10.0 x 15.0	6.0 x 6.0 x 1.5
Sensor Surface [mm]	3.0	1.4
Graded Grid	N/A	Yes
M2/M1 [%]		87.6
Dist 3dB Peak [mm]		> 15.0

Measurement Results

	Area Scan	Zoom Scan
psSAR1g [W/Kg]	0.936	0.932
psSAR10g [W/Kg]	0.625	0.614
Power Drift [dB]	N/A	0.00



System Performance Check Report for D2600V2 - SN1036

Exposure Conditions

Frequency [MHz] Channel Number	2600.000 0	TSL Permittivity	38.1
Group UID	CW 0--	TSL Conductivity [S/m]	1.99
Conversion Factor	7.39	Phantom Section TSL	Flat HSL

Hardware Setup

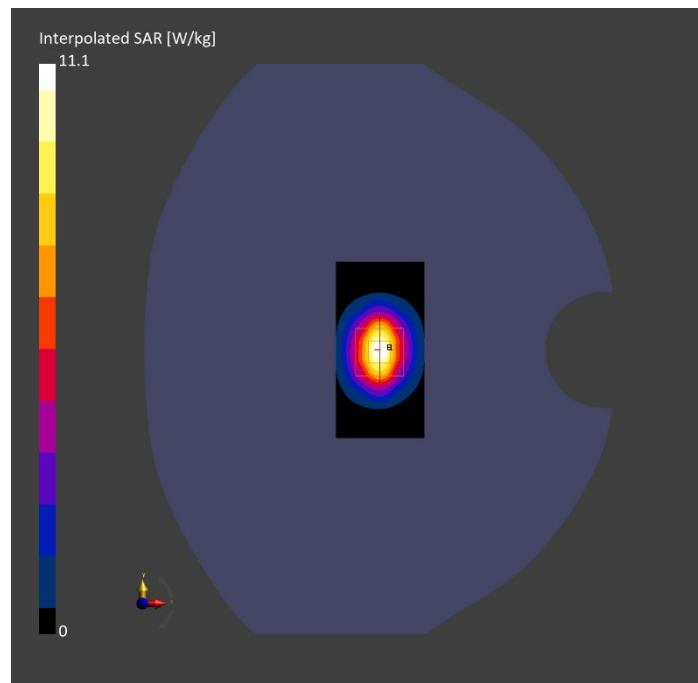
Probe Calibration Date	EX3DV4 - SN7448 2023-02-14	Phantom	Twin-SAM V5.0 (30deg probe tilt)
DAE Calibration Date	DAE4 Sn1472 2023-01-23	TSL Type	HBBL-600-10000
Software Version	16.2.4.2524		

Scans Setup

	Area Scan	Zoom Scan
Grid Extents [mm]	40.0 x 80.0	30.0 x 30.0 x 30.0
Grid Steps [mm]	10.0 x 10.0	5.0 x 5.0 x 1.5
Sensor Surface [mm]	3.0	1.4
Graded Grid	N/A	Yes
M2/M1 [%]		80.1
Dist 3dB Peak [mm]		9.0

Measurement Results

	Area Scan	Zoom Scan
psSAR1g [W/Kg]	5.31	5.24
psSAR10g [W/Kg]	2.37	2.37
Power Drift [dB]	N/A	0.01



System Performance Check Report for D2600V2 - SN1036

Exposure Conditions

Frequency [MHz] Channel Number	2600.000 0	TSL Permittivity	40.0
Group UID	CW 0--	TSL Conductivity [S/m]	1.94
Conversion Factor	7.33	Phantom Section TSL	Flat HSL

Hardware Setup

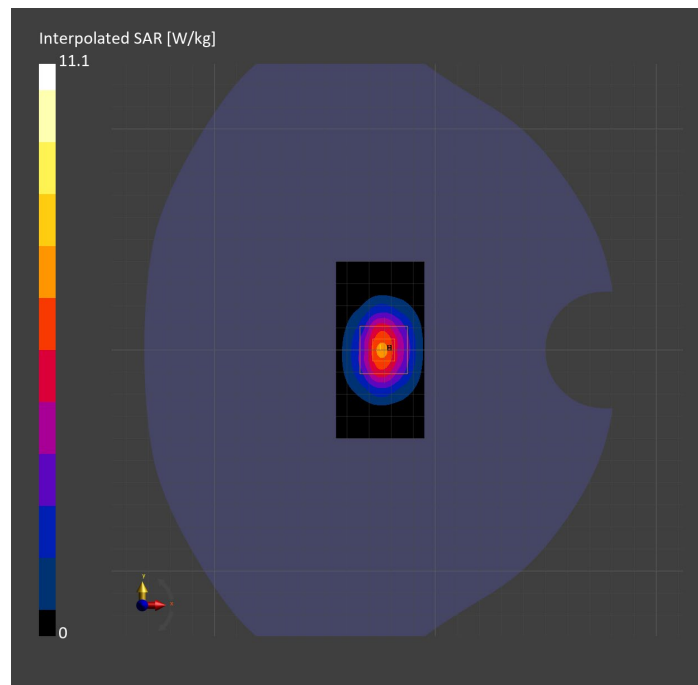
Probe Calibration Date	EX3DV4 - SN7808 2023-04-18	Phantom	Twin-SAM V8.0 (30deg probe tilt)
DAE Calibration Date	DAE4 Sn1796 2023-04-03	TSL Type	HBBL-600-10000
Software Version	16.2.4.2524		

Scans Setup

	Area Scan	Zoom Scan
Grid Extents [mm]	40.0 x 80.0	30.0 x 30.0 x 30.0
Grid Steps [mm]	10.0 x 10.0	5.0 x 5.0 x 1.5
Sensor Surface [mm]	3.0	1.4
Graded Grid	N/A	Yes
M2/M1 [%]		78.1
Dist 3dB Peak [mm]		9.0

Measurement Results

	Area Scan	Zoom Scan
psSAR1g [W/Kg]	5.13	5.12
psSAR10g [W/Kg]	2.36	2.33
Power Drift [dB]	N/A	0.02



System Performance Check Report for D3700V2 - SN1110

Exposure Conditions

Frequency [MHz] Channel Number	3700.000 0	TSL Permittivity	38.8
Group UID	CW 0--	TSL Conductivity [S/m]	3.11
Conversion Factor	6.66	Phantom Section TSL	Flat HSL

Hardware Setup

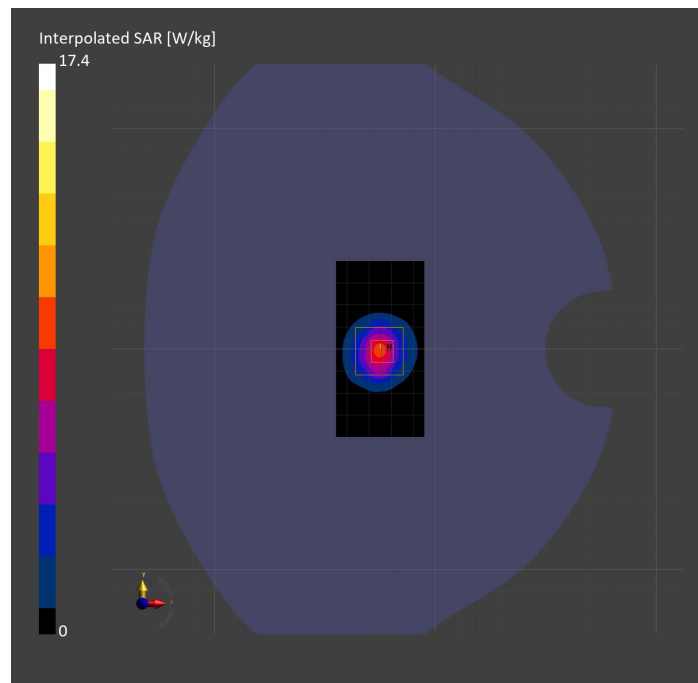
Probe Calibration Date	EX3DV4 - SN3990 2023-02-17	Phantom	Twin-SAM V5.0 (30deg probe tilt)
DAE Calibration Date	DAE4 Sn1545 2023-02-14	TSL Type	HBBL-600-10000
Software Version	16.2.4.2524		

Scans Setup

	Area Scan	Zoom Scan
Grid Extents [mm]	40.0 x 80.0	30.0 x 30.0 x 28.0
Grid Steps [mm]	10.0 x 10.0	5.0 x 5.0 x 1.4
Sensor Surface [mm]	3.0	1.4
Graded Grid	N/A	Yes
M2/M1 [%]		76.9
Dist 3dB Peak [mm]		8.1

Measurement Results

	Area Scan	Zoom Scan
psSAR1g [W/Kg]	6.49	6.80
psSAR10g [W/Kg]	2.37	2.57
Power Drift [dB]	N/A	-0.10



System Performance Check Report for D3500V2 - SN1011

Exposure Conditions

Frequency [MHz] Channel Number	3500.000 0	TSL Permittivity	36.7
Group UID	CW 0--	TSL Conductivity [S/m]	2.88
Conversion Factor	6.79	Phantom Section TSL	Flat HSL

Hardware Setup

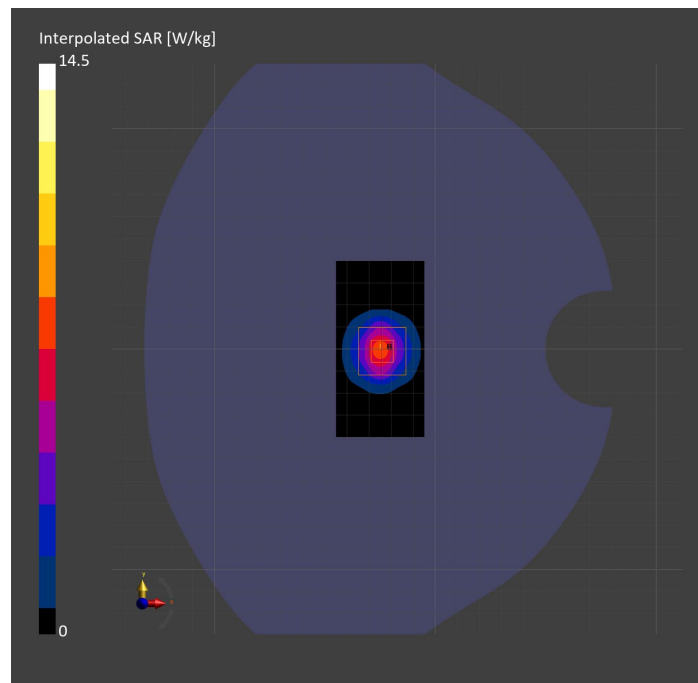
Probe Calibration Date	EX3DV4 - SN3990 2023-02-17	Phantom	Twin-SAM V5.0 (30deg probe tilt)
DAE Calibration Date	DAE4 Sn1545 2023-02-14	TSL Type	HBBL-600-10000
Software Version	16.2.4.2524		

Scans Setup

	Area Scan	Zoom Scan
Grid Extents [mm]	40.0 x 80.0	30.0 x 30.0 x 28.0
Grid Steps [mm]	10.0 x 10.0	5.0 x 5.0 x 1.4
Sensor Surface [mm]	3.0	1.4
Graded Grid	N/A	Yes
M2/M1 [%]		78.0
Dist 3dB Peak [mm]		8.0

Measurement Results

	Area Scan	Zoom Scan
psSAR1g [W/Kg]	5.79	5.94
psSAR10g [W/Kg]	2.23	2.35
Power Drift [dB]	N/A	0.03



System Performance Check Report for D2600V2 - SN1036

Exposure Conditions

Frequency [MHz] Channel Number	2600.000 0	TSL Permittivity	39.4
Group UID	CW 0--	TSL Conductivity [S/m]	1.90
Conversion Factor	7.32	Phantom Section TSL	Flat HSL

Hardware Setup

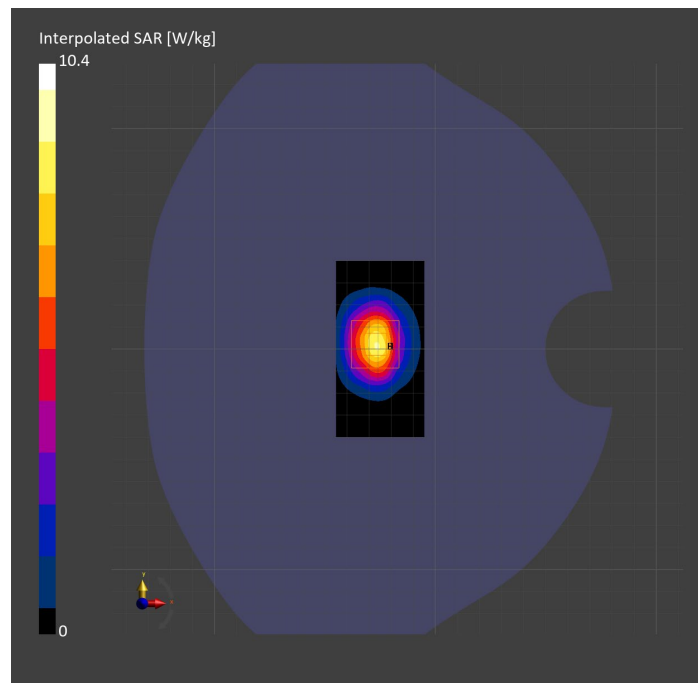
Probe Calibration Date	EX3DV4 - SN3885 2022-09-20	Phantom	Twin-SAM V5.0 (30deg probe tilt)
DAE Calibration Date	DAE4 Sn1548 2023-02-14	TSL Type	HBBL-600-10000
Software Version	16.2.4.2524		

Scans Setup

	Area Scan	Zoom Scan
Grid Extents [mm]	40.0 x 80.0	30.0 x 30.0 x 30.0
Grid Steps [mm]	10.0 x 10.0	5.0 x 5.0 x 1.5
Sensor Surface [mm]	3.0	1.4
Graded Grid	N/A	Yes
M2/M1 [%]		79.9
Dist 3dB Peak [mm]		9.1

Measurement Results

	Area Scan	Zoom Scan
psSAR1g [W/Kg]	6.73	5.01
psSAR10g [W/Kg]	3.07	2.28
Power Drift [dB]	N/A	-0.13



System Performance Check Report for D2600V2 - SN1036

Exposure Conditions

Frequency [MHz] Channel Number	2600.000 0	TSL Permittivity	38.7
Group UID	CW 0--	TSL Conductivity [S/m]	1.89
Conversion Factor	7.49	Phantom Section TSL	Flat HSL

Hardware Setup

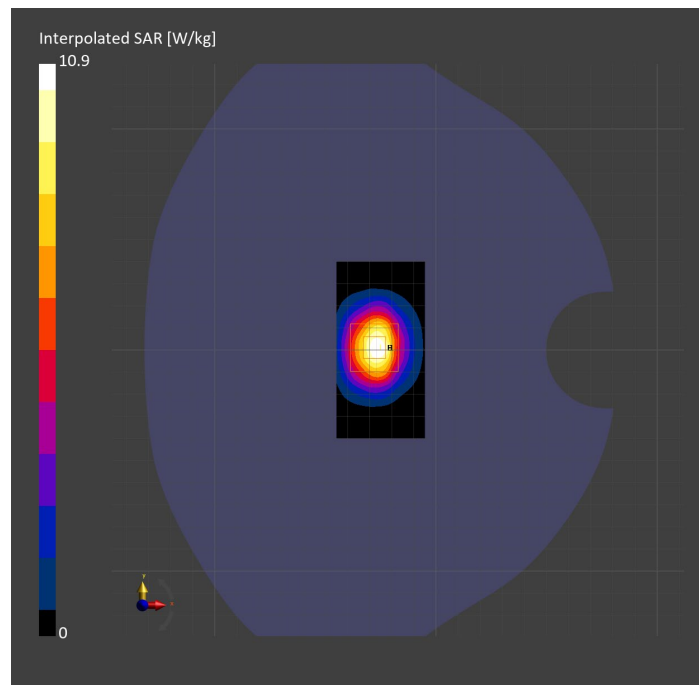
Probe Calibration Date	EX3DV4 - SN7482 2023-04-18	Phantom	Twin-SAM V8.0 (30deg probe tilt)
DAE Calibration Date	DAE4 Sn1380 2023-02-14	TSL Type	HBBL-600-10000
Software Version	16.2.4.2524		

Scans Setup

	Area Scan	Zoom Scan
Grid Extents [mm]	40.0 x 80.0	30.0 x 30.0 x 30.0
Grid Steps [mm]	10.0 x 10.0	5.0 x 5.0 x 1.5
Sensor Surface [mm]	3.0	1.4
Graded Grid	N/A	Yes
M2/M1 [%]		78.5
Dist 3dB Peak [mm]		9.0

Measurement Results

	Area Scan	Zoom Scan
psSAR1g [W/Kg]	5.19	5.17
psSAR10g [W/Kg]	2.39	2.40
Power Drift [dB]	N/A	-0.01



System Performance Check Report for D2300V2 - SN1058

Exposure Conditions

Frequency [MHz] Channel Number	2300.000 0	TSL Permittivity	40.2
Group UID	CW 0--	TSL Conductivity [S/m]	1.63
Conversion Factor	7.71	Phantom Section TSL	Flat HSL

Hardware Setup

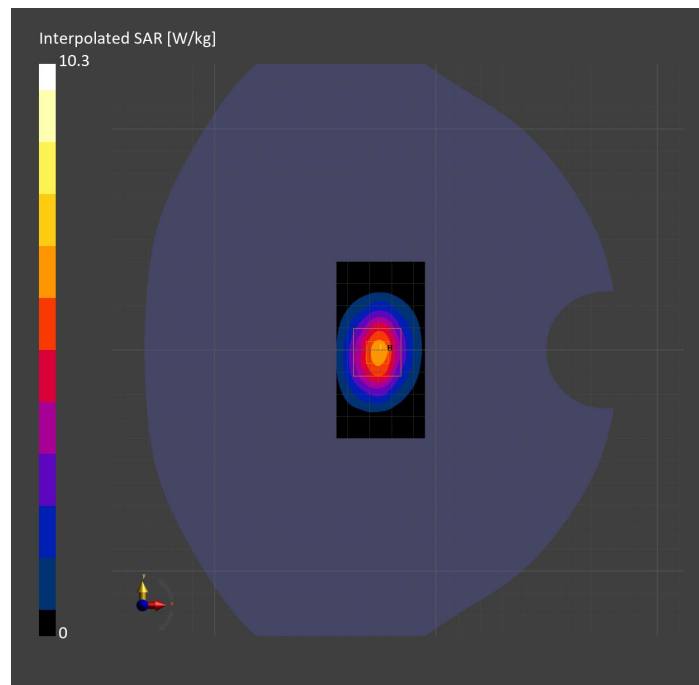
Probe Calibration Date	EX3DV4 - SN7482 2023-04-18	Phantom	Twin-SAM V8.0 (30deg probe tilt)
DAE Calibration Date	DAE4 Sn1380 2023-02-14	TSL Type	HBBL-600-10000
Software Version	16.2.4.2524		

Scans Setup

	Area Scan	Zoom Scan
Grid Extents [mm]	40.0 x 80.0	30.0 x 30.0 x 30.0
Grid Steps [mm]	10.0 x 10.0	5.0 x 5.0 x 1.5
Sensor Surface [mm]	3.0	1.4
Graded Grid	N/A	Yes
M2/M1 [%]		81.5
Dist 3dB Peak [mm]		9.9

Measurement Results

	Area Scan	Zoom Scan
psSAR1g [W/Kg]	5.16	5.22
psSAR10g [W/Kg]	2.50	2.57
Power Drift [dB]	N/A	0.03



System Performance Check Report for D3500V2 - SN1060

Exposure Conditions

Frequency [MHz] Channel Number	3500.000 0	TSL Permittivity	39.2
Group UID	CW 0--	TSL Conductivity [S/m]	2.98
Conversion Factor	6.87	Phantom Section TSL	Flat HSL

Hardware Setup

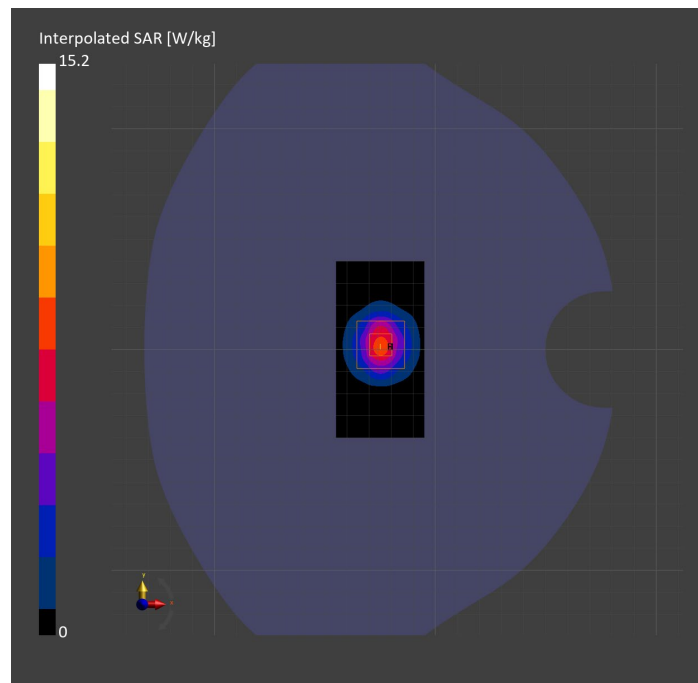
Probe Calibration Date	EX3DV4 - SN7335 2023-01-26	Phantom	Twin-SAM V8.0 (30deg probe tilt)
DAE Calibration Date	DAE4ip Sn1619 2023-04-18	TSL Type	HBBL-600-10000
Software Version	16.2.4.2524		

Scans Setup

	Area Scan	Zoom Scan
Grid Extents [mm]	40.0 x 80.0	28.0 x 28.0 x 28.0
Grid Steps [mm]	10.0 x 10.0	5.0 x 5.0 x 1.4
Sensor Surface [mm]	3.0	1.4
Graded Grid	N/A	Yes
M2/M1 [%]		76.8
Dist 3dB Peak [mm]		8.3

Measurement Results

	Area Scan	Zoom Scan
psSAR1g [W/Kg]	6.08	6.09
psSAR10g [W/Kg]	2.35	2.36
Power Drift [dB]	N/A	0.02



System Performance Check Report for D3700V2 - SN1110

Exposure Conditions

Frequency [MHz] Channel Number	3700.000 0	TSL Permittivity	39.4
Group UID	CW 0--	TSL Conductivity [S/m]	3.03
Conversion Factor	6.92	Phantom Section TSL	Flat HSL

Hardware Setup

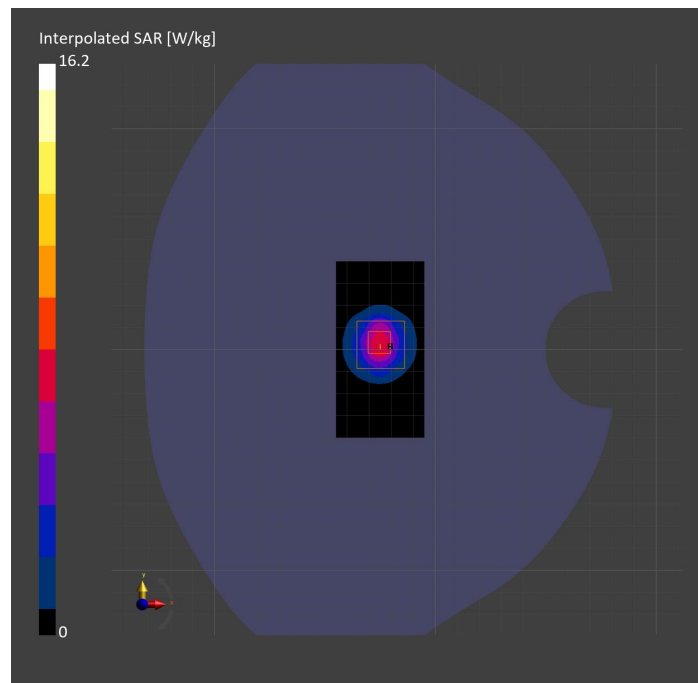
Probe Calibration Date	EX3DV4 - SN7335 2023-01-26	Phantom	Twin-SAM V8.0 (30deg probe tilt)
DAE Calibration Date	DAE4ip Sn1619 2023-04-18	TSL Type	HBBL-600-10000
Software Version	16.2.4.2524		

Scans Setup

	Area Scan	Zoom Scan
Grid Extents [mm]	40.0 x 80.0	28.0 x 28.0 x 28.0
Grid Steps [mm]	10.0 x 10.0	5.0 x 5.0 x 1.4
Sensor Surface [mm]	3.0	1.4
Graded Grid	N/A	Yes
M2/M1 [%]		74.6
Dist 3dB Peak [mm]		8.1

Measurement Results

	Area Scan	Zoom Scan
psSAR1g [W/Kg]	5.72	6.04
psSAR10g [W/Kg]	2.13	2.26
Power Drift [dB]	N/A	-0.00



System Performance Check Report for D3500V2 - SN1060

Exposure Conditions

Frequency [MHz] Channel Number	3500.000 0	TSL Permittivity	38.0
Group UID	CW 0--	TSL Conductivity [S/m]	2.84
Conversion Factor	6.21	Phantom Section TSL	Flat HSL

Hardware Setup

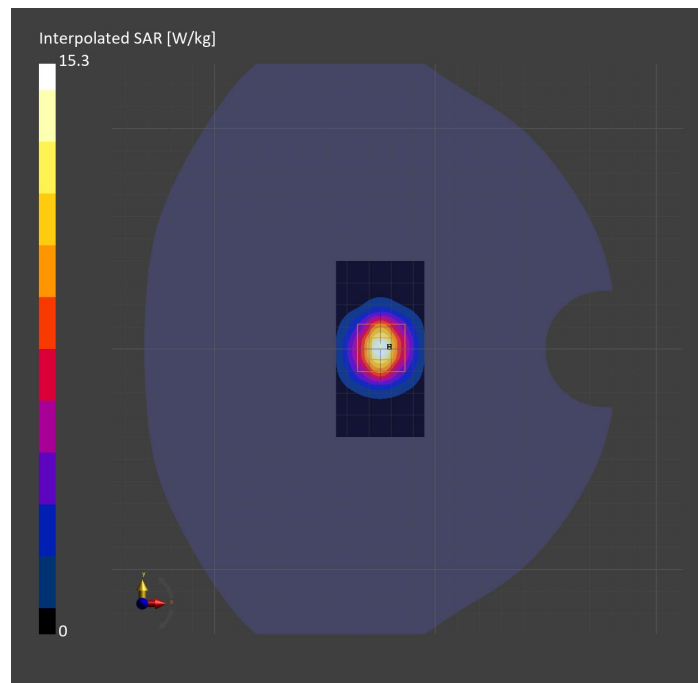
Probe Calibration Date	EX3DV4 - SN7463 2023-04-19	Phantom	Twin-SAM V8.0 (30deg probe tilt)
DAE Calibration Date	DAE4 Sn1673 2023-05-12	TSL Type	HBBL-600-10000
Software Version	16.2.4.2524		

Scans Setup

	Area Scan	Zoom Scan
Grid Extents [mm]	40.0 x 80.0	28.0 x 28.0 x 28.0
Grid Steps [mm]	10.0 x 10.0	5.0 x 5.0 x 1.4
Sensor Surface [mm]	3.0	1.4
Graded Grid	N/A	Yes
M2/M1 [%]		77.0
Dist 3dB Peak [mm]		9.0

Measurement Results

	Area Scan	Zoom Scan
psSAR1g [W/Kg]	5.91	6.35
psSAR10g [W/Kg]	2.31	2.62
Power Drift [dB]	N/A	0.04



System Performance Check Report for D3900V2 - SN1093

Exposure Conditions

Frequency [MHz] Channel Number	3900.000 0	TSL Permittivity	37.1
Group UID	CW 0--	TSL Conductivity [S/m]	3.45
Conversion Factor	6.15	Phantom Section TSL	Flat HSL

Hardware Setup

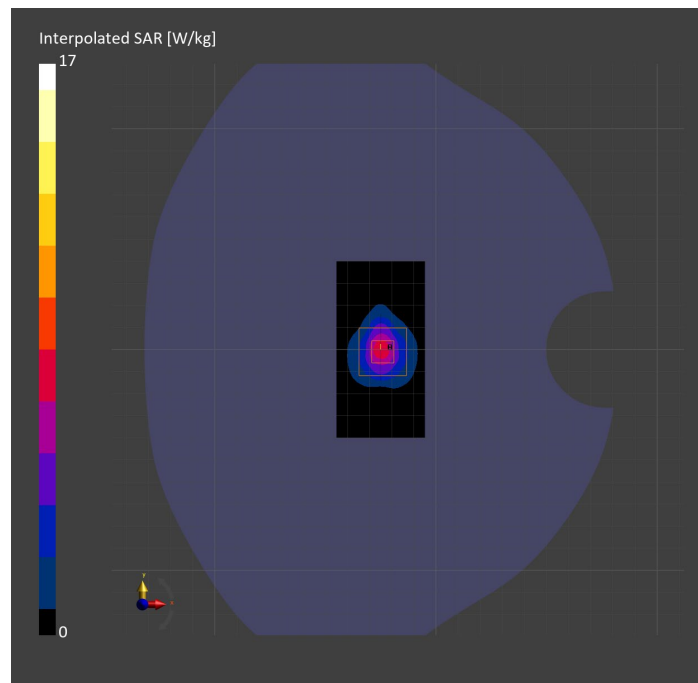
Probe Calibration Date	EX3DV4 - SN7463 2023-04-19	Phantom	Twin-SAM V8.0 (30deg probe tilt)
DAE Calibration Date	DAE4 Sn1673 2023-05-12	TSL Type	HBBL-600-10000
Software Version	16.2.4.2524		

Scans Setup

	Area Scan	Zoom Scan
Grid Extents [mm]	40.0 x 80.0	28.0 x 28.0 x 28.0
Grid Steps [mm]	10.0 x 10.0	5.0 x 5.0 x 1.4
Sensor Surface [mm]	3.0	1.4
Graded Grid	N/A	Yes
M2/M1 [%]		71.2
Dist 3dB Peak [mm]		8.1

Measurement Results

	Area Scan	Zoom Scan
psSAR1g [W/Kg]	5.60	6.53
psSAR10g [W/Kg]	1.98	2.52
Power Drift [dB]	N/A	0.16



System Performance Check Report for D3500V2 - SN1011

Exposure Conditions

Frequency [MHz] Channel Number	3500.000 0	TSL Permittivity	37.6
Group UID	CW 0--	TSL Conductivity [S/m]	2.93
Conversion Factor	6.21	Phantom Section TSL	Flat HSL

Hardware Setup

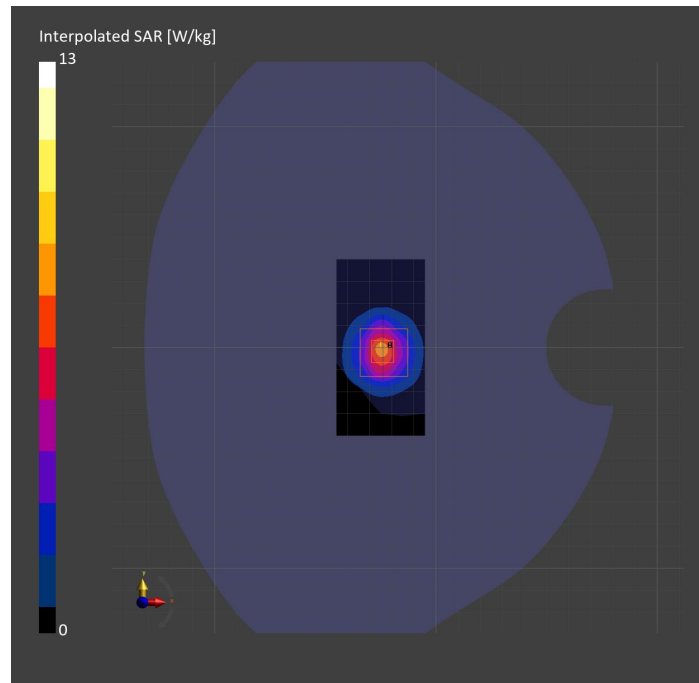
Probe Calibration Date	EX3DV4 - SN7463 2023-04-19	Phantom	Twin-SAM V8.0 (30deg probe tilt)
DAE Calibration Date	DAE4 Sn1673 2023-05-12	TSL Type	HBBL-600-10000
Software Version	16.2.4.2524		

Scans Setup

	Area Scan	Zoom Scan
Grid Extents [mm]	40.0 x 80.0	28.0 x 28.0 x 28.0
Grid Steps [mm]	10.0 x 10.0	5.0 x 5.0 x 1.4
Sensor Surface [mm]	3.0	1.4
Graded Grid	N/A	Yes
M2/M1 [%]		84.2
Dist 3dB Peak [mm]		8.1

Measurement Results

	Area Scan	Zoom Scan
psSAR1g [W/Kg]	5.81	6.24
psSAR10g [W/Kg]	2.26	2.67
Power Drift [dB]	N/A	-0.01



System Performance Check Report for D3500V2 - SN1060

Exposure Conditions

Frequency [MHz] Channel Number	3500.000 0	TSL Permittivity	37.6
Group UID	CW 0--	TSL Conductivity [S/m]	2.79
Conversion Factor	7.04	Phantom Section TSL	Flat HSL

Hardware Setup

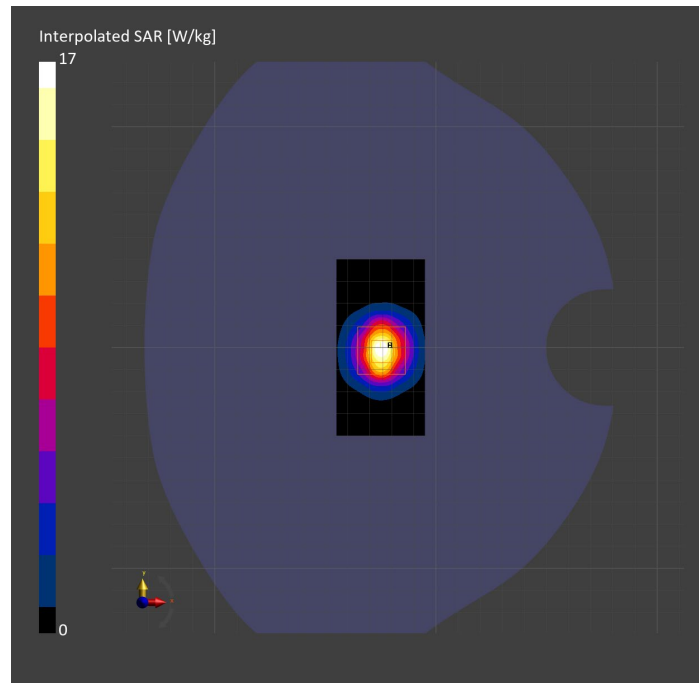
Probe Calibration Date	EX3DV4 - SN7356 2023-03-17	Phantom	Twin-SAM V8.0 (30deg probe tilt)
DAE Calibration Date	DAE4 Sn1798 2023-05-02	TSL Type	HBBL-600-10000
Software Version	16.2.4.2524		

Scans Setup

	Area Scan	Zoom Scan
Grid Extents [mm]	40.0 x 80.0	28.0 x 28.0 x 28.0
Grid Steps [mm]	10.0 x 10.0	5.0 x 5.0 x 1.4
Sensor Surface [mm]	3.0	1.4
Graded Grid	N/A	Yes
M2/M1 [%]		71.0
Dist 3dB Peak [mm]		8.3

Measurement Results

	Area Scan	Zoom Scan
psSAR1g [W/Kg]	6.04	6.07
psSAR10g [W/Kg]	2.30	2.42
Power Drift [dB]	N/A	0.17



System Performance Check Report for D3700V2 - SN1110

Exposure Conditions

Frequency [MHz] Channel Number	3700.000 0	TSL Permittivity	37.2
Group UID	CW 0--	TSL Conductivity [S/m]	2.97
Conversion Factor	7.06	Phantom Section TSL	Flat HSL

Hardware Setup

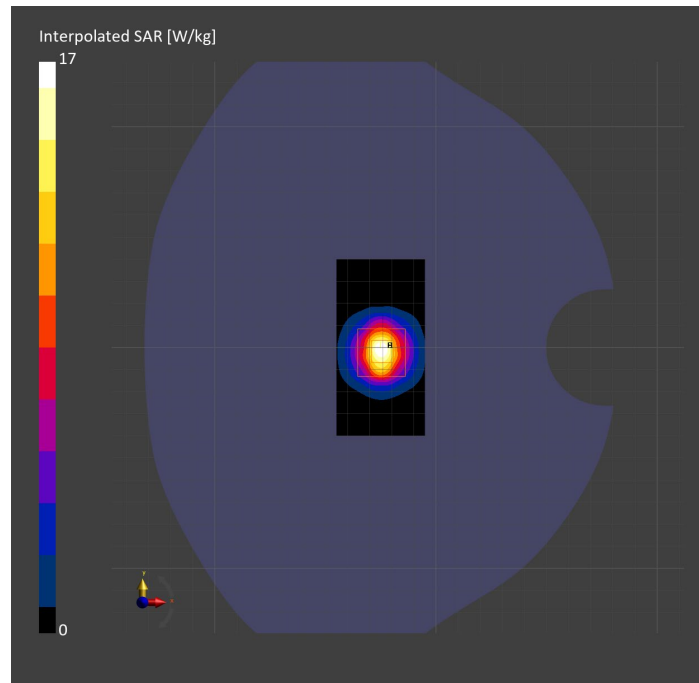
Probe Calibration Date	EX3DV4 - SN7356 2023-03-17	Phantom	Twin-SAM V8.0 (30deg probe tilt)
DAE Calibration Date	DAE4 Sn1798 2023-05-02	TSL Type	HBBL-600-10000
Software Version	16.2.4.2524		

Scans Setup

	Area Scan	Zoom Scan
Grid Extents [mm]	40.0 x 80.0	28.0 x 28.0 x 28.0
Grid Steps [mm]	10.0 x 10.0	5.0 x 5.0 x 1.4
Sensor Surface [mm]	3.0	1.4
Graded Grid	N/A	Yes
M2/M1 [%]		70.7
Dist 3dB Peak [mm]		8.0

Measurement Results

	Area Scan	Zoom Scan
psSAR1g [W/Kg]	5.79	5.93
psSAR10g [W/Kg]	2.15	2.27
Power Drift [dB]	N/A	-0.05



System Performance Check Report for CLA-13 - SN1008

Exposure Conditions

Frequency [MHz] Channel Number	13.000 0	TSL Permittivity	55.7
Group UID	CW 0--	TSL Conductivity [S/m]	0.718
Conversion Factor	19.03	Phantom Section TSL	Flat HSL

Hardware Setup

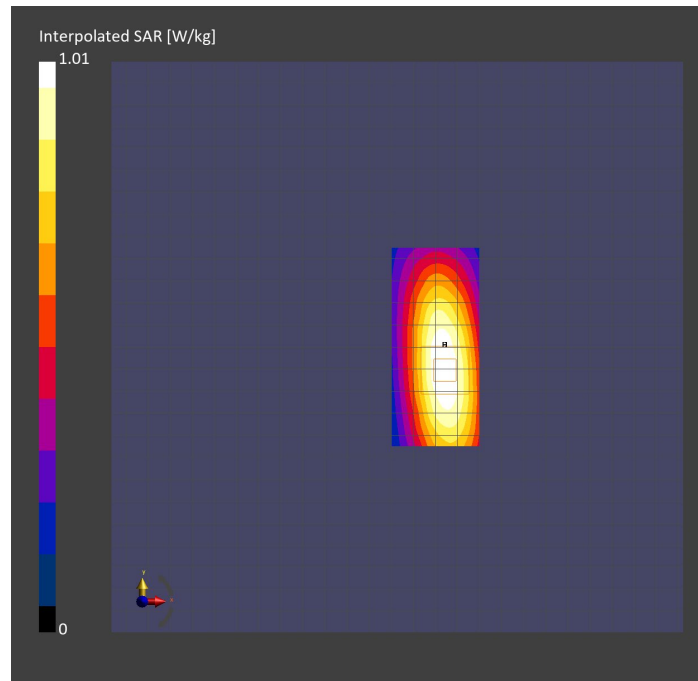
Probe Calibration Date	EX3DV4 - SN3989 2023-01-26	Phantom	ELI V8.0 (20deg probe tilt)
DAE Calibration Date	DAE4 Sn1257 2022-09-20	TSL Type	HBBL4-250V3
Software Version	16.2.4.2524		

Scans Setup

	Area Scan	Zoom Scan
Grid Extents [mm]	40.0 x 90.0	30.0 x 30.0 x 30.0
Grid Steps [mm]	10.0 x 15.0	6.0 x 6.0 x 1.5
Sensor Surface [mm]	3.0	1.4
Graded Grid	N/A	Yes
M2/M1 [%]		75.4
Dist 3dB Peak [mm]		15.2

Measurement Results

	Area Scan	Zoom Scan
psSAR1g [W/Kg]	0.531	0.509
psSAR10g [W/Kg]	0.431	0.314
Power Drift [dB]	N/A	-0.01



System Performance Check Report for D3500V2 - SN1011

Exposure Conditions

Frequency [MHz] Channel Number	3500.000 0	TSL Permittivity	39.6
Group UID	CW 0--	TSL Conductivity [S/m]	2.79
Conversion Factor	6.78	Phantom Section TSL	Flat HSL

Hardware Setup

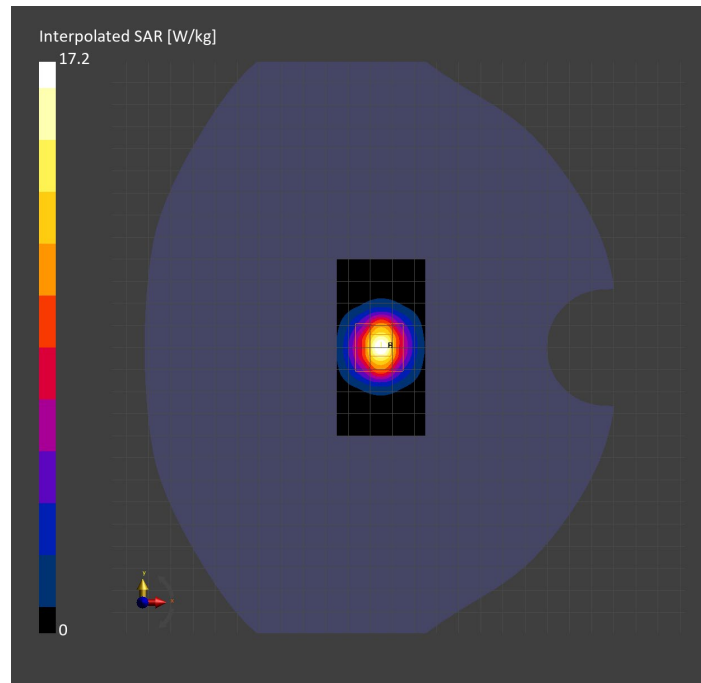
Probe Calibration Date	EX3DV4 - SN3989 2023-01-26	Phantom	Twin-SAM V8.0 (30deg probe tilt)
DAE Calibration Date	DAE4 Sn1547 2023-04-18	TSL Type	HBBL-600-10000
Software Version	16.2.4.2524		

Scans Setup

	Area Scan	Zoom Scan
Grid Extents [mm]	40.0 x 80.0	28.0 x 28.0 x 28.0
Grid Steps [mm]	10.0 x 10.0	5.0 x 5.0 x 1.4
Sensor Surface [mm]	3.0	1.4
Graded Grid	N/A	Yes
M2/M1 [%]		75.8
Dist 3dB Peak [mm]		8.3

Measurement Results

	Area Scan	Zoom Scan
psSAR1g [W/Kg]	6.61	6.79
psSAR10g [W/Kg]	2.53	2.66
Power Drift [dB]	N/A	-0.06



System Performance Check Report for D2600V2 - SN1036

Exposure Conditions

Frequency [MHz] Channel Number	2600.000 0	TSL Permittivity	39.6
Group UID	CW 0--	TSL Conductivity [S/m]	1.94
Conversion Factor	7.39	Phantom Section TSL	Flat HSL

Hardware Setup

Probe Calibration Date	EX3DV4 - SN7448 2023-02-14	Phantom	Twin-SAM V5.0 (30deg probe tilt)
DAE Calibration Date	DAE4 Sn1472 2023-01-23	TSL Type	HBBL-600-10000
Software Version	16.2.4.2524		

Scans Setup

	Area Scan	Zoom Scan
Grid Extents [mm]	40.0 x 80.0	30.0 x 30.0 x 30.0
Grid Steps [mm]	10.0 x 10.0	5.0 x 5.0 x 1.5
Sensor Surface [mm]	3.0	1.4
Graded Grid	N/A	Yes
M2/M1 [%]		79.9
Dist 3dB Peak [mm]		9.0

Measurement Results

	Area Scan	Zoom Scan
psSAR1g [W/Kg]	5.90	5.84
psSAR10g [W/Kg]	2.65	2.64
Power Drift [dB]	N/A	0.00

