

# Measurement Report for GSM 850: GPRS-FDD (TDMA, GMSK, TN 0-1), BACK

## Exposure Conditions

Band	GSM 850	TSL Permittivity	39.9
Frequency [MHz]   Channel Number	836.600   190	TSL Conductivity [S/m]	0.870
Group   UID	GSM   10024-DAC	Phantom Section   TSL	Flat   HSL
Conversion Factor	8.76	Test Distance [mm]	5.00

## Hardware Setup

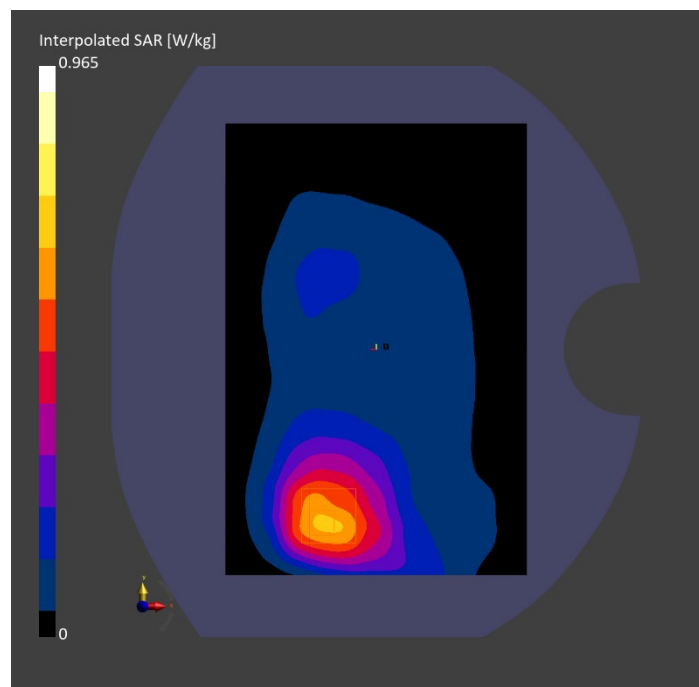
Probe   Calibration Date	EX3DV4 - SN7806   2023-04-04	Phantom	Twin-SAM V8.0 (30deg probe tilt)
DAE   Calibration Date	DAE4 Sn1784   2023-04-03	TSL Type	HBBL-600-10000
Software Version	16.2.4.2524		

## Scan Setup

	Area Scan	Zoom Scan
Grid Extents [mm]	120.0 x 180.0	30.0 x 30.0 x 30.0
Grid Steps [mm]	15.0 x 15.0	6.0 x 6.0 x 1.5
Sensor Surface [mm]	3.0	1.4
Graded Grid	N/A	Yes
M2/M1 [%]		83.9
Dist 3dB Peak [mm]		12.6

## Measurement Results

	Area Scan	Zoom Scan
psSAR1g [W/Kg]	0.577	<b>0.576</b>
psSAR10g [W/Kg]	0.378	<b>0.373</b>
Power Drift [dB]	N/A	-0.00



# Measurement Report for GSM 850: GPRS-FDD (TDMA, GMSK, TN 0-1), CHEEK

## Exposure Conditions

Band	GSM 850	TSL Permittivity	43.0
Frequency [MHz]   Channel Number	836.600   190	TSL Conductivity [S/m]	0.870
Group   UID	GSM   10024-DAC	Phantom Section   TSL	RightHead   HSL
Conversion Factor	7.83	Test Distance [mm]	0.00

## Hardware Setup

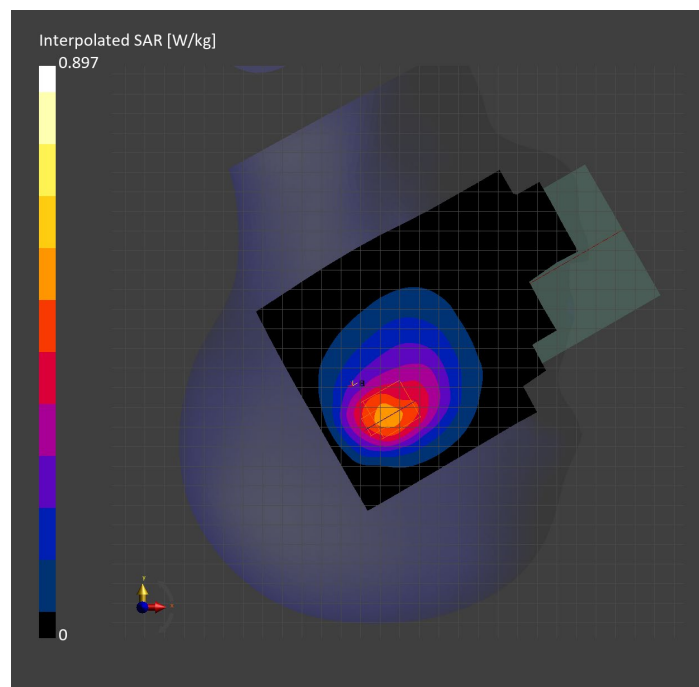
Probe   Calibration Date	EX3DV4 - SN3749   2023-01-27	Phantom	Twin-SAM V8.0 (30deg probe tilt)
DAE   Calibration Date	DAE4 Sn1357   2023-01-27	TSL Type	HBBL-600-10000
Software Version	16.2.4.2524		

## Scan Setup

	Area Scan	Zoom Scan
Grid Extents [mm]	120.0 x 210.0	30.0 x 30.0 x 30.0
Grid Steps [mm]	15.0 x 15.0	6.0 x 6.0 x 1.5
Sensor Surface [mm]	3.0	1.4
Graded Grid	N/A	Yes
M2/M1 [%]		85.2
Dist 3dB Peak [mm]		12.9

## Measurement Results

	Area Scan	Zoom Scan
psSAR1g [W/Kg]	0.482	<b>0.515</b>
psSAR10g [W/Kg]	0.314	<b>0.341</b>
Power Drift [dB]	N/A	-0.08



# Measurement Report for GSM 850: GPRS-FDD (TDMA, GMSK, TN 0-1), EDGE LEFT

## Exposure Conditions

Band	GSM 850	TSL Permittivity	43.0
Frequency [MHz]   Channel Number	836.600   190	TSL Conductivity [S/m]	0.870
Group   UID	GSM   10024-DAC	Phantom Section   TSL	Flat   HSL
Conversion Factor	7.83	Test Distance [mm]	5.00

## Hardware Setup

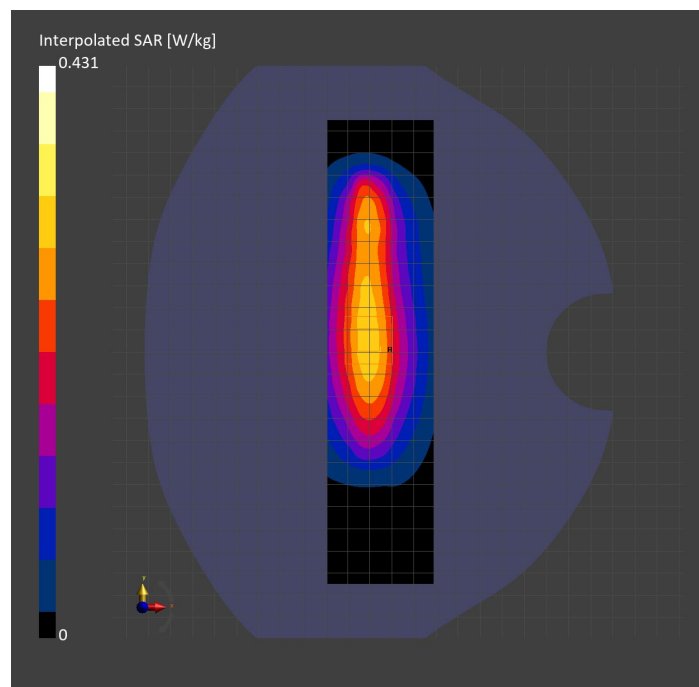
Probe   Calibration Date	EX3DV4 - SN3749   2023-01-27	Phantom	Twin-SAM V8.0 (30deg probe tilt)
DAE   Calibration Date	DAE4 Sn1357   2023-01-27	TSL Type	HBBL-600-10000
Software Version	16.2.4.2524		

## Scan Setup

	Area Scan	Zoom Scan
Grid Extents [mm]	48.0 x 210.0	30.0 x 30.0 x 30.0
Grid Steps [mm]	8.0 x 15.0	6.0 x 6.0 x 1.5
Sensor Surface [mm]	3.0	1.4
Graded Grid	N/A	Yes
M2/M1 [%]		86.7
Dist 3dB Peak [mm]		14.6

## Measurement Results

	Area Scan	Zoom Scan
psSAR1g [W/Kg]	0.272	<b>0.273</b>
psSAR10g [W/Kg]	0.177	<b>0.177</b>
Power Drift [dB]	N/A	0.02



# Measurement Report for PCS 1900: GPRS-FDD (TDMA, GMSK, TN 0-1), BACK

## Exposure Conditions

Band	PCS 1900	TSL Permittivity	39.8
Frequency [MHz]   Channel Number	1850.200   512	TSL Conductivity [S/m]	1.37
Group   UID	GSM   10024-DAC	Phantom Section   TSL	Flat   HSL
Conversion Factor	8.43	Test Distance [mm]	5.00

## Hardware Setup

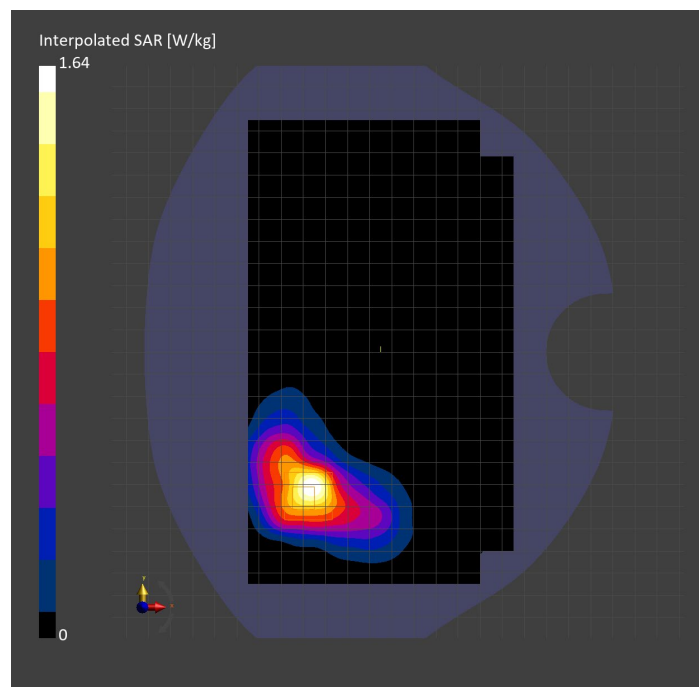
Probe   Calibration Date	EX3DV4 - SN3991   2022-09-22	Phantom	Twin-SAM V8.0 (30deg probe tilt)
DAE   Calibration Date	DAE4 Sn1674   2023-05-11	TSL Type	HBBL-600-10000
Software Version	16.2.4.2524		

## Scan Setup

	Area Scan	Zoom Scan
Grid Extents [mm]	120.0 x 210.0	30.0 x 30.0 x 30.0
Grid Steps [mm]	15.0 x 15.0	6.0 x 6.0 x 1.5
Sensor Surface [mm]	3.0	1.4
Graded Grid	N/A	Yes
M2/M1 [%]		76.4
Dist 3dB Peak [mm]		6.8

## Measurement Results

	Area Scan	Zoom Scan
psSAR1g [W/Kg]	0.561	<b>0.715</b>
psSAR10g [W/Kg]	0.302	<b>0.320</b>
Power Drift [dB]	N/A	0.00



# Measurement Report for PCS 1900: GPRS-FDD (TDMA, GMSK, TN 0-1), CHEEK

## Exposure Conditions

Band	PCS 1900	TSL Permittivity	38.2
Frequency [MHz]   Channel Number	1880.000   661	TSL Conductivity [S/m]	1.40
Group   UID	GSM   10024-DAC	Phantom Section   TSL	RightHead   HSL
Conversion Factor	7.53	Test Distance [mm]	0.00

## Hardware Setup

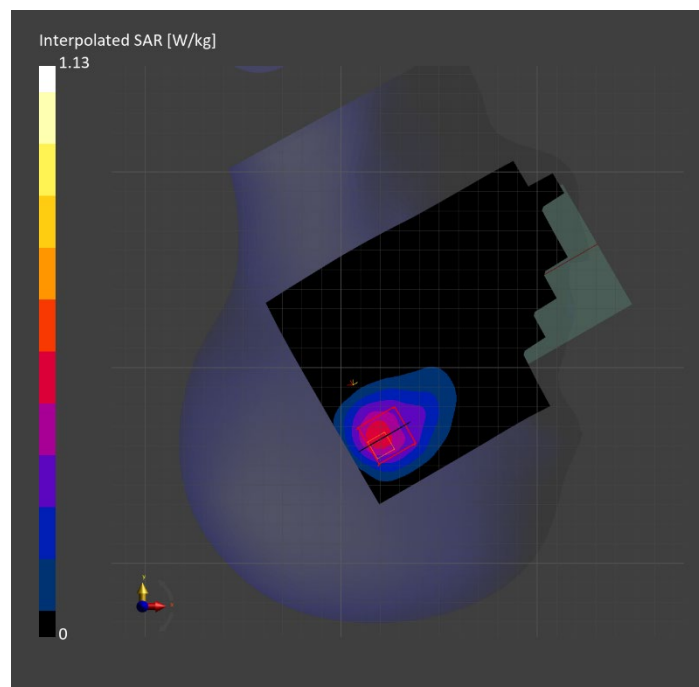
Probe   Calibration Date	EX3DV4 - SN7807   2023-04-11	Phantom	Twin-SAM V8.0 (30deg probe tilt)
DAE   Calibration Date	DAE4 Sn1799   2023-04-04	TSL Type	HBBL-600-10000
Software Version	16.2.4.2524		

## Scan Setup

	Area Scan	Zoom Scan
Grid Extents [mm]	120.0 x 180.0	30.0 x 30.0 x 30.0
Grid Steps [mm]	15.0 x 15.0	6.0 x 6.0 x 1.5
Sensor Surface [mm]	3.0	1.4
Graded Grid	N/A	Yes
M2/M1 [%]		70.3
Dist 3dB Peak [mm]		9.2

## Measurement Results

	Area Scan	Zoom Scan
psSAR1g [W/Kg]	0.442	<b>0.459</b>
psSAR10g [W/Kg]	0.243	<b>0.230</b>
Power Drift [dB]	N/A	0.04



# Measurement Report for PCS 1900: GPRS-FDD (TDMA, GMSK, TN 0-1), EDGE RIGHT

## Exposure Conditions

Band	PCS 1900	TSL Permittivity	38.1
Frequency [MHz]   Channel Number	1880.000   661	TSL Conductivity [S/m]	1.41
Group   UID	GSM   10024-DAC	Phantom Section   TSL	Flat   HSL
Conversion Factor	7.53	Test Distance [mm]	5.00

## Hardware Setup

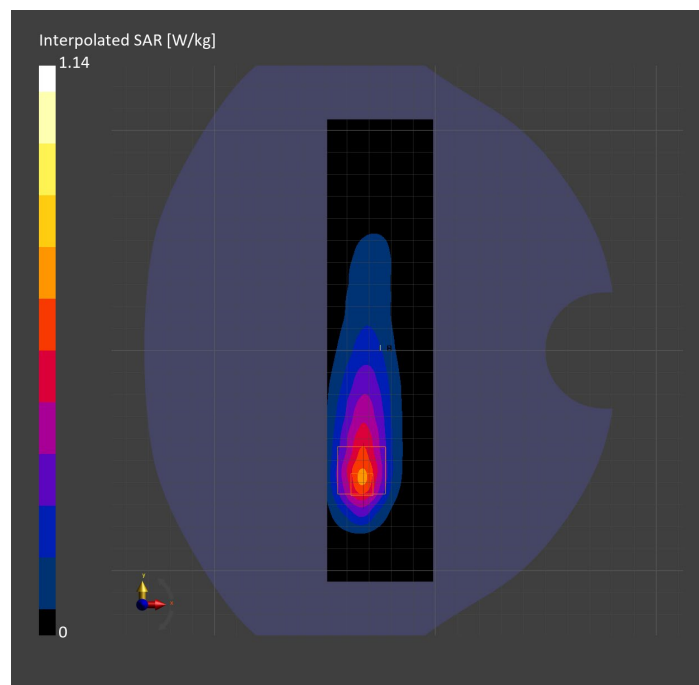
Probe   Calibration Date	EX3DV4 - SN7807   2023-04-11	Phantom	Twin-SAM V8.0 (30deg probe tilt)
DAE   Calibration Date	DAE4 Sn1799   2023-04-04	TSL Type	HBBL-600-10000
Software Version	16.2.4.2524		

## Scan Setup

	Area Scan	Zoom Scan
Grid Extents [mm]	48.0 x 210.0	30.0 x 30.0 x 30.0
Grid Steps [mm]	8.0 x 15.0	6.0 x 6.0 x 1.5
Sensor Surface [mm]	3.0	1.4
Graded Grid	N/A	Yes
M2/M1 [%]		75.1
Dist 3dB Peak [mm]		8.4

## Measurement Results

	Area Scan	Zoom Scan
psSAR1g [W/Kg]	0.535	<b>0.526</b>
psSAR10g [W/Kg]	0.272	<b>0.264</b>
Power Drift [dB]	N/A	-0.00



# Measurement Report for Band 2: UMTS-FDD (WCDMA), CHEEK

## Exposure Conditions

Band	Band 2	TSL Permittivity	38.1
Frequency [MHz]   Channel Number	1907.600   9538	TSL Conductivity [S/m]	1.42
Group   UID	WCDMA   10011-CAC	Phantom Section   TSL	RightHead   HSL
Conversion Factor	7.53	Test Distance [mm]	0.00

## Hardware Setup

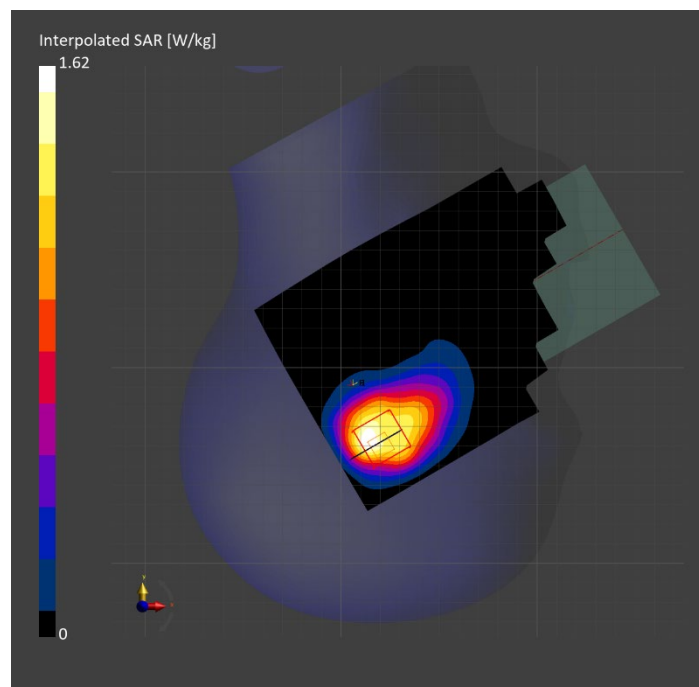
Probe   Calibration Date	EX3DV4 - SN7807   2023-04-11	Phantom	Twin-SAM V8.0 (30deg probe tilt)
DAE   Calibration Date	DAE4 Sn1799   2023-04-04	TSL Type	HBBL-600-10000
Software Version	16.2.4.2524		

## Scan Setup

	Area Scan	Zoom Scan
Grid Extents [mm]	120.0 x 210.0	30.0 x 30.0 x 30.0
Grid Steps [mm]	15.0 x 15.0	6.0 x 6.0 x 1.5
Sensor Surface [mm]	3.0	1.4
Graded Grid	N/A	Yes
M2/M1 [%]		77.2
Dist 3dB Peak [mm]		7.8

## Measurement Results

	Area Scan	Zoom Scan
psSAR1g [W/Kg]	0.593	<b>0.719</b>
psSAR10g [W/Kg]	0.341	<b>0.357</b>
Power Drift [dB]	N/A	-0.04



# Measurement Report for Band 2: UMTS-FDD (WCDMA), BACK

## Exposure Conditions

Band	Band 2	TSL Permittivity	38.1
Frequency [MHz]   Channel Number	1907.600   9538	TSL Conductivity [S/m]	1.42
Group   UID	WCDMA   10011-CAC	Phantom Section   TSL	Flat   HSL
Conversion Factor	7.53	Test Distance [mm]	5.00

## Hardware Setup

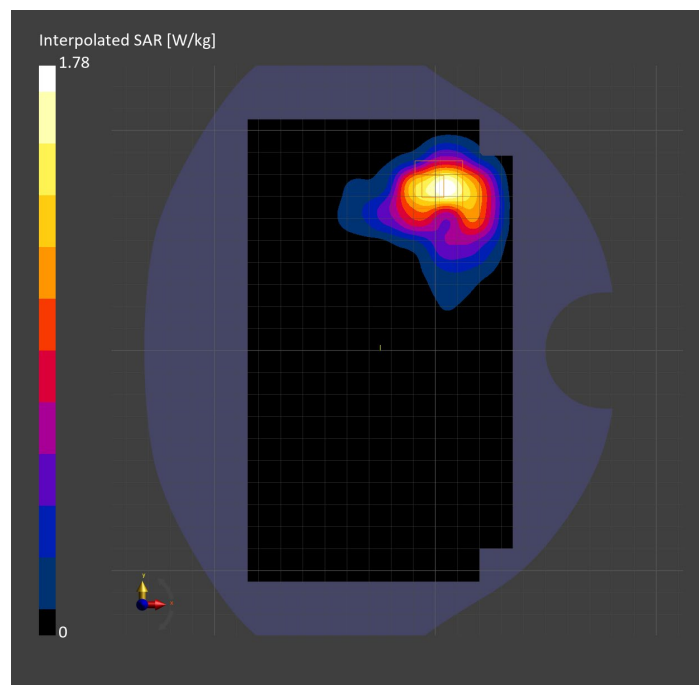
Probe   Calibration Date	EX3DV4 - SN7807   2023-04-11	Phantom	Twin-SAM V8.0 (30deg probe tilt)
DAE   Calibration Date	DAE4 Sn1799   2023-04-04	TSL Type	HBBL-600-10000
Software Version	16.2.4.2524		

## Scan Setup

	Area Scan	Zoom Scan
Grid Extents [mm]	120.0 x 210.0	30.0 x 30.0 x 30.0
Grid Steps [mm]	15.0 x 15.0	6.0 x 6.0 x 1.5
Sensor Surface [mm]	3.0	1.4
Graded Grid	N/A	Yes
M2/M1 [%]		75.4
Dist 3dB Peak [mm]		6.8

## Measurement Results

	Area Scan	Zoom Scan
psSAR1g [W/Kg]	0.706	<b>0.788</b>
psSAR10g [W/Kg]	0.376	<b>0.361</b>
Power Drift [dB]	N/A	-0.01





# Measurement Report for Band 2: UMTS-FDD (WCDMA), EDGE RIGHT

## Exposure Conditions

Band	Band 2	TSL Permittivity	38.1
Frequency [MHz]   Channel Number	1880.000   9400	TSL Conductivity [S/m]	1.41
Group   UID	WCDMA   10011-CAC	Phantom Section   TSL	Flat   HSL
Conversion Factor	7.53	Test Distance [mm]	5.00

## Hardware Setup

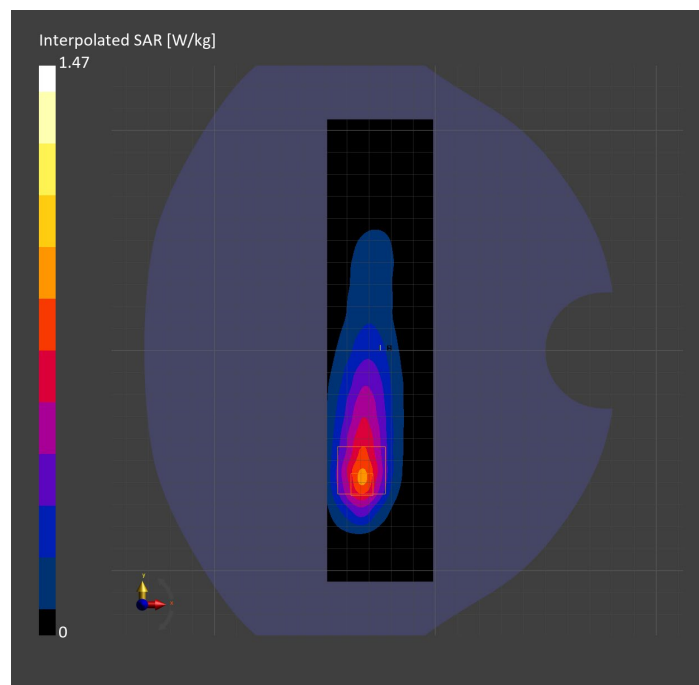
Probe   Calibration Date	EX3DV4 - SN7807   2023-04-11	Phantom	Twin-SAM V8.0 (30deg probe tilt)
DAE   Calibration Date	DAE4 Sn1799   2023-04-04	TSL Type	HBBL-600-10000
Software Version	16.2.4.2524		

## Scan Setup

	Area Scan	Zoom Scan
Grid Extents [mm]	48.0 x 210.0	30.0 x 30.0 x 30.0
Grid Steps [mm]	8.0 x 15.0	6.0 x 6.0 x 1.5
Sensor Surface [mm]	3.0	1.4
Graded Grid	N/A	Yes
M2/M1 [%]		74.8
Dist 3dB Peak [mm]		8.5

## Measurement Results

	Area Scan	Zoom Scan
psSAR1g [W/Kg]	0.692	<b>0.678</b>
psSAR10g [W/Kg]	0.353	<b>0.340</b>
Power Drift [dB]	N/A	0.00



# Measurement Report for Band 4: UMTS-FDD (WCDMA), EDGE BOTTOM

## Exposure Conditions

Band	Band 4	TSL Permittivity	41.3
Frequency [MHz]   Channel Number	1732.600   1413	TSL Conductivity [S/m]	1.30
Group   UID	WCDMA   10011-CAC	Phantom Section   TSL	Flat   HSL
Conversion Factor	8.98	Test Distance [mm]	5.00

## Hardware Setup

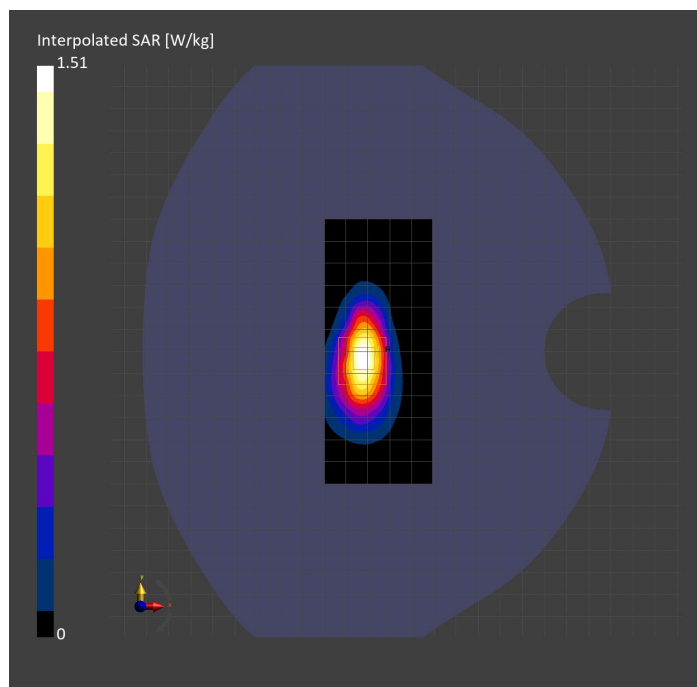
Probe   Calibration Date	EX3DV4 - SN3989   2023-01-26	Phantom	Twin-SAM V8.0 (30deg probe tilt)
DAE   Calibration Date	DAE4 Sn1257   2022-09-20	TSL Type	HBBL-600-10000
Software Version	16.2.4.2524		

## Scan Setup

	Area Scan	Zoom Scan
Grid Extents [mm]	48.6 x 120.0	30.0 x 30.0 x 30.0
Grid Steps [mm]	8.1 x 15.0	6.0 x 6.0 x 1.5
Sensor Surface [mm]	3.0	1.4
Graded Grid	N/A	Yes
M2/M1 [%]		81.9
Dist 3dB Peak [mm]		8.4

## Measurement Results

	Area Scan	Zoom Scan
psSAR1g [W/Kg]	0.799	<b>0.796</b>
psSAR10g [W/Kg]	0.400	<b>0.398</b>
Power Drift [dB]	N/A	-0.00



# Measurement Report for Band 4: UMTS-FDD (WCDMA), CHEEK

## Exposure Conditions

Band	Band 4	TSL Permittivity	39.8
Frequency [MHz]   Channel Number	1752.600   1513	TSL Conductivity [S/m]	1.37
Group   UID	WCDMA   10011-CAC	Phantom Section   TSL	RightHead   HSL
Conversion Factor	8.66	Test Distance [mm]	0.00

## Hardware Setup

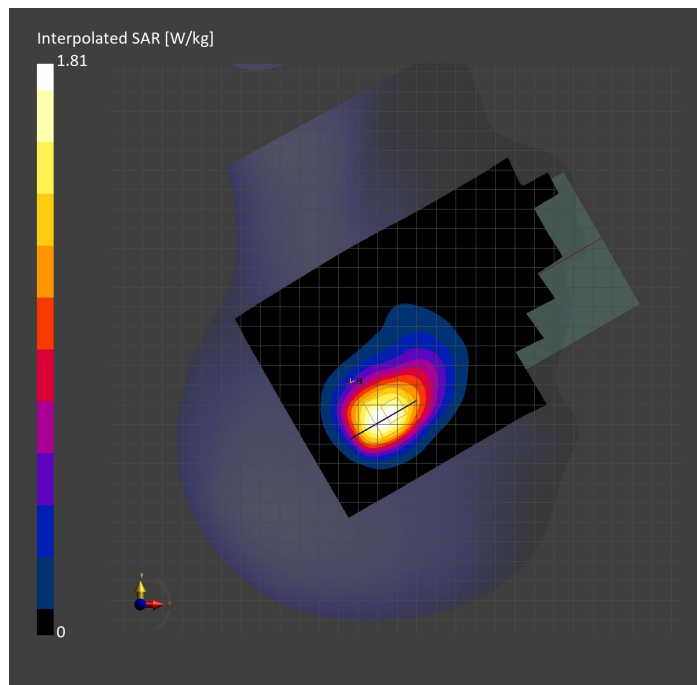
Probe   Calibration Date	EX3DV4 - SN7569   2023-04-18	Phantom	Twin-SAM V8.0 (30deg probe tilt)
DAE   Calibration Date	DAE4 Sn1547   2023-04-18	TSL Type	HBBL-600-10000
Software Version	16.2.4.2524		

## Scan Setup

	Area Scan	Zoom Scan
Grid Extents [mm]	120.0 x 210.0	30.0 x 30.0 x 30.0
Grid Steps [mm]	15.0 x 15.0	5.7 x 5.7 x 1.5
Sensor Surface [mm]	3.0	1.4
Graded Grid	N/A	Yes
M2/M1 [%]		72.7
Dist 3dB Peak [mm]		6.9

## Measurement Results

	Area Scan	Zoom Scan
psSAR1g [W/Kg]	0.888	<b>0.826</b>
psSAR10g [W/Kg]	0.520	<b>0.497</b>
Power Drift [dB]	N/A	-0.03



# Measurement Report for Band 4: UMTS-FDD (WCDMA), BACK

## Exposure Conditions

Band	Band 4	TSL Permittivity	40.7
Frequency [MHz]   Channel Number	1752.600   1513	TSL Conductivity [S/m]	1.31
Group   UID	WCDMA   10011-CAC	Phantom Section   TSL	Flat   HSL
Conversion Factor	8.98	Test Distance [mm]	5.00

## Hardware Setup

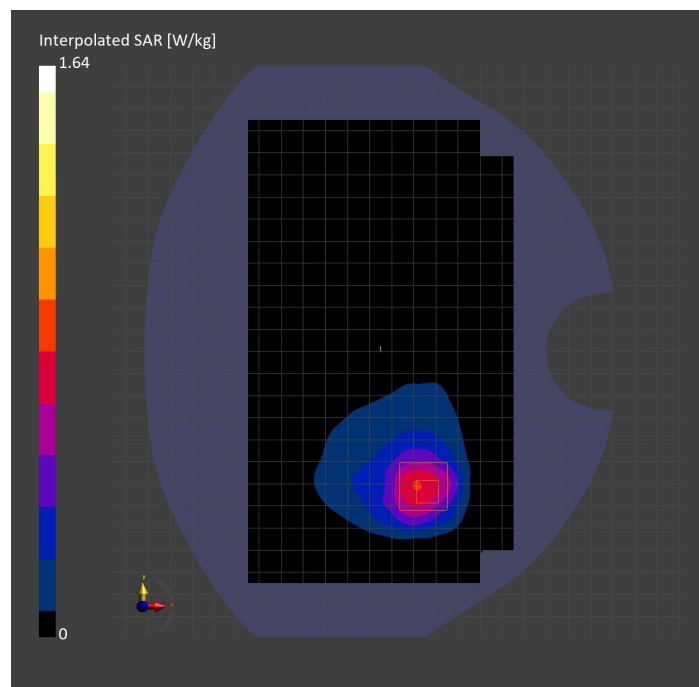
Probe   Calibration Date	EX3DV4 - SN3989   2023-01-26	Phantom	Twin-SAM V8.0 (30deg probe tilt)
DAE   Calibration Date	DAE4 Sn1257   2022-09-20	TSL Type	HBBL-600-10000
Software Version	16.2.4.2524		

## Scan Setup

	Area Scan	Zoom Scan
Grid Extents [mm]	120.0 x 210.0	30.0 x 30.0 x 30.0
Grid Steps [mm]	15.0 x 15.0	6.0 x 6.0 x 1.5
Sensor Surface [mm]	3.0	1.4
Graded Grid	N/A	Yes
M2/M1 [%]		83.0
Dist 3dB Peak [mm]		10.3

## Measurement Results

	Area Scan	Zoom Scan
psSAR1g [W/Kg]	0.691	<b>0.823</b>
psSAR10g [W/Kg]	0.390	<b>0.409</b>
Power Drift [dB]	N/A	-0.01



# Measurement Report for Band 5: UMTS-FDD (WCDMA), BACK

## Exposure Conditions

Band	Band 5	TSL Permittivity	40.7
Frequency [MHz]   Channel Number	846.600   4233	TSL Conductivity [S/m]	0.885
Group   UID	WCDMA   10011-CAC	Phantom Section   TSL	Flat   HSL
Conversion Factor	8.76	Test Distance [mm]	5.00

## Hardware Setup

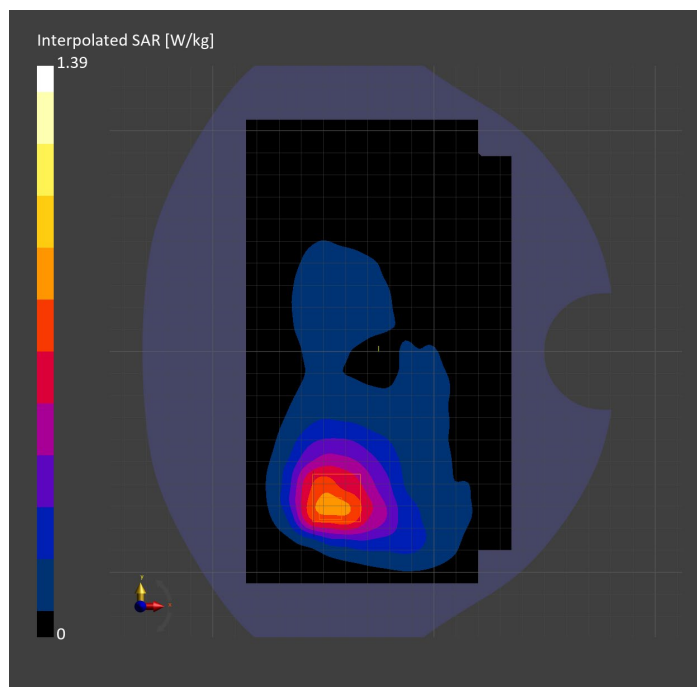
Probe   Calibration Date	EX3DV4 - SN7806   2023-04-04	Phantom	Twin-SAM V8.0 (30deg probe tilt)
DAE   Calibration Date	DAE4 Sn1784   2023-04-03	TSL Type	HBBL-600-10000
Software Version	16.2.4.2524		

## Scan Setup

	Area Scan	Zoom Scan
Grid Extents [mm]	120.0 x 210.0	30.0 x 30.0 x 30.0
Grid Steps [mm]	15.0 x 15.0	6.0 x 6.0 x 1.5
Sensor Surface [mm]	3.0	1.4
Graded Grid	N/A	Yes
M2/M1 [%]		81.2
Dist 3dB Peak [mm]		11.1

## Measurement Results

	Area Scan	Zoom Scan
psSAR1g [W/Kg]	0.760	<b>0.758</b>
psSAR10g [W/Kg]	0.487	<b>0.477</b>
Power Drift [dB]	N/A	-0.06



# Measurement Report for Band 5: UMTS-FDD (WCDMA), EDGE RIGHT

## Exposure Conditions

Band	Band 5	TSL Permittivity	40.7
Frequency [MHz]   Channel Number	836.600   4183	TSL Conductivity [S/m]	0.882
Group   UID	WCDMA   10011-CAC	Phantom Section   TSL	Flat   HSL
Conversion Factor	8.76	Test Distance [mm]	5.00

## Hardware Setup

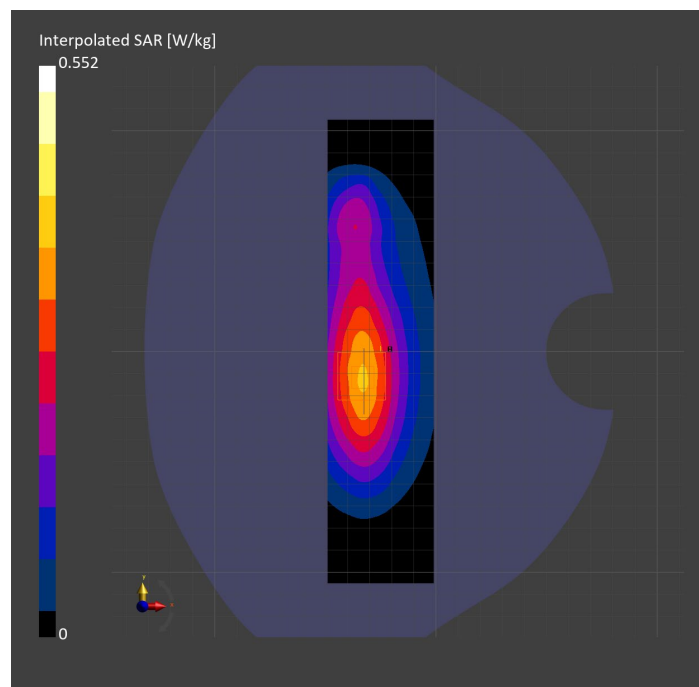
Probe   Calibration Date	EX3DV4 - SN7806   2023-04-04	Phantom	Twin-SAM V8.0 (30deg probe tilt)
DAE   Calibration Date	DAE4 Sn1784   2023-04-03	TSL Type	HBBL-600-10000
Software Version	16.2.4.2524		

## Scan Setup

	Area Scan	Zoom Scan
Grid Extents [mm]	48.0 x 210.0	30.0 x 30.0 x 30.0
Grid Steps [mm]	8.0 x 15.0	6.0 x 6.0 x 1.5
Sensor Surface [mm]	3.0	1.4
Graded Grid	N/A	Yes
M2/M1 [%]		82.5
Dist 3dB Peak [mm]		14.4

## Measurement Results

	Area Scan	Zoom Scan
psSAR1g [W/Kg]	0.323	<b>0.326</b>
psSAR10g [W/Kg]	0.210	<b>0.209</b>
Power Drift [dB]	N/A	-0.01



# Measurement Report for Band 5: UMTS-FDD (WCDMA), CHEEK

## Exposure Conditions

Band	Band 5	TSL Permittivity	42.9
Frequency [MHz]   Channel Number	846.600   4233	TSL Conductivity [S/m]	0.873
Group   UID	WCDMA   10011-CAC	Phantom Section   TSL	RightHead   HSL
Conversion Factor	7.83	Test Distance [mm]	0.00

## Hardware Setup

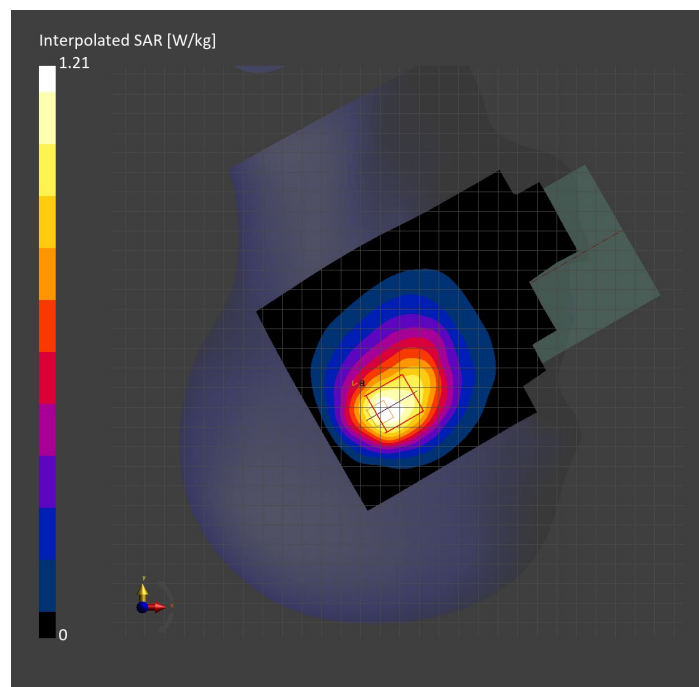
Probe   Calibration Date	EX3DV4 - SN3749   2023-01-27	Phantom	Twin-SAM V8.0 (30deg probe tilt)
DAE   Calibration Date	DAE4 Sn1357   2023-01-27	TSL Type	HBBL-600-10000
Software Version	16.2.4.2524		

## Scan Setup

	Area Scan	Zoom Scan
Grid Extents [mm]	120.0 x 210.0	30.0 x 30.0 x 30.0
Grid Steps [mm]	15.0 x 15.0	6.0 x 6.0 x 1.5
Sensor Surface [mm]	3.0	1.4
Graded Grid	N/A	Yes
M2/M1 [%]		80.0
Dist 3dB Peak [mm]		15.6

## Measurement Results

	Area Scan	Zoom Scan
psSAR1g [W/Kg]	0.713	<b>0.714</b>
psSAR10g [W/Kg]	0.468	<b>0.490</b>
Power Drift [dB]	N/A	-0.01



# Measurement Report for Band 5: LTE-FDD (SC-FDMA, 1 RB, 10 MHz, QPSK) RBPosition:Mid AntennaCfg:SISO, BACK

## Exposure Conditions

Band	Band 5	TSL Permittivity	40.7
Frequency [MHz]   Channel Number	836.500   20525	TSL Conductivity [S/m]	0.882
Group   UID	LTE-FDD   10175-CAH	Phantom Section   TSL	Flat   HSL
Conversion Factor	8.76	Test Distance [mm]	5.00

## Hardware Setup

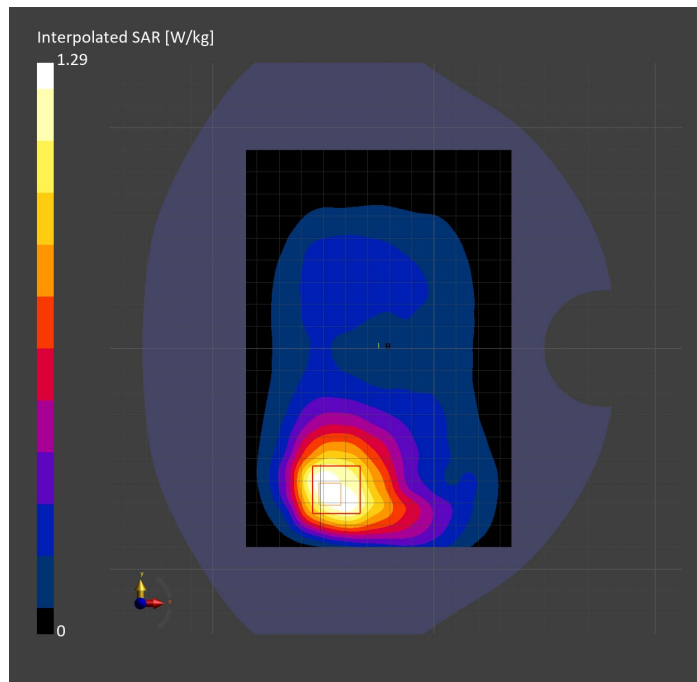
Probe   Calibration Date	EX3DV4 - SN7806   2023-04-04	Phantom	Twin-SAM V8.0 (30deg probe tilt)
DAE   Calibration Date	DAE4 Sn1784   2023-04-03	TSL Type	HBBL-600-10000
Software Version	16.2.4.2524		

## Scan Setup

	Area Scan	Zoom Scan
Grid Extents [mm]	120.0 x 180.0	30.0 x 30.0 x 30.0
Grid Steps [mm]	15.0 x 15.0	6.0 x 6.0 x 1.5
Sensor Surface [mm]	3.0	1.4
Graded Grid	N/A	Yes
M2/M1 [%]		83.3
Dist 3dB Peak [mm]		10.9

## Measurement Results

	Area Scan	Zoom Scan
psSAR1g [W/Kg]	0.697	<b>0.742</b>
psSAR10g [W/Kg]	0.463	<b>0.476</b>
Power Drift [dB]	N/A	-0.03





# Measurement Report for Band 5: LTE-FDD (SC-FDMA, 100% RB, 10 MHz, QPSK) AntennaCfg:SISO, CHEEK

## Exposure Conditions

<b>Band</b>	Band 5	<b>TSL Permittivity</b>	40.7
<b>Frequency [MHz]   Channel Number</b>	836.500   20525	<b>TSL Conductivity [S/m]</b>	0.871
<b>Group   UID</b>	LTE-FDD   10108-CAH	<b>Phantom Section   TSL</b>	RightHead   HSL
<b>Conversion Factor</b>	7.83	<b>Test Distance [mm]</b>	0.00

## Hardware Setup

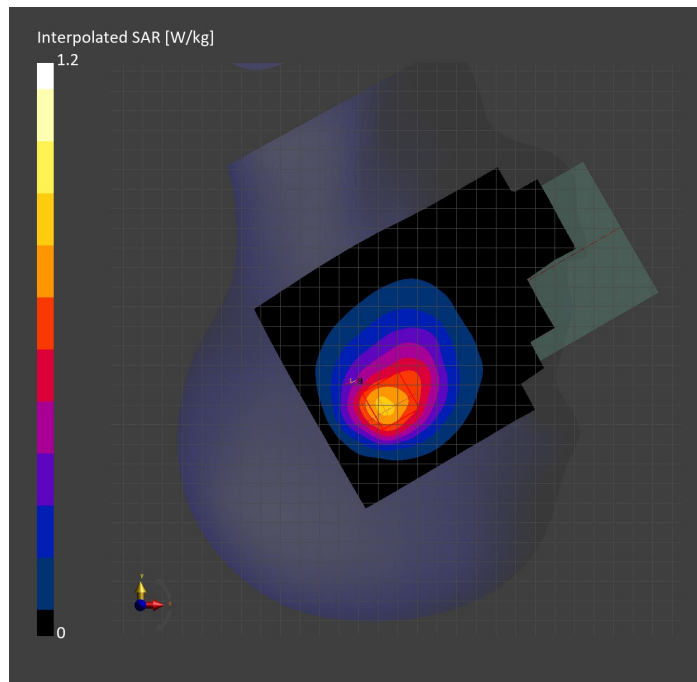
<b>Probe   Calibration Date</b>	EX3DV4 - SN3749   2023-01-27	<b>Phantom</b>	Twin-SAM V8.0 (30deg probe tilt)
<b>DAE   Calibration Date</b>	DAE4 Sn1357   2023-01-27	<b>TSL Type</b>	HBBL-600-10000
<b>Software Version</b>	16.2.4.2524		

## Scan Setup

	Area Scan	Zoom Scan
<b>Grid Extents [mm]</b>	120.0 x 210.0	30.0 x 30.0 x 30.0
<b>Grid Steps [mm]</b>	15.0 x 15.0	6.0 x 6.0 x 1.5
<b>Sensor Surface [mm]</b>	3.0	1.4
<b>Graded Grid</b>	N/A	Yes
<b>M2/M1 [%]</b>		84.6
<b>Dist 3dB Peak [mm]</b>		12.4

## Measurement Results

	Area Scan	Zoom Scan
<b>psSAR1g [W/Kg]</b>	0.710	<b>0.717</b>
<b>psSAR10g [W/Kg]</b>	0.462	<b>0.480</b>
<b>Power Drift [dB]</b>	N/A	-0.03



# Measurement Report for Band 5: LTE-FDD (SC-FDMA, 1 RB, 10 MHz, QPSK) RBPosition:Mid AntennaCfg:SISO, EDGE BOTTOM

## Exposure Conditions

Band	Band 5	TSL Permittivity	40.7
Frequency [MHz]   Channel Number	836.500   20525	TSL Conductivity [S/m]	0.882
Group   UID	LTE-FDD   10175-CAH	Phantom Section   TSL	Flat   HSL
Conversion Factor	8.76	Test Distance [mm]	5.00

## Hardware Setup

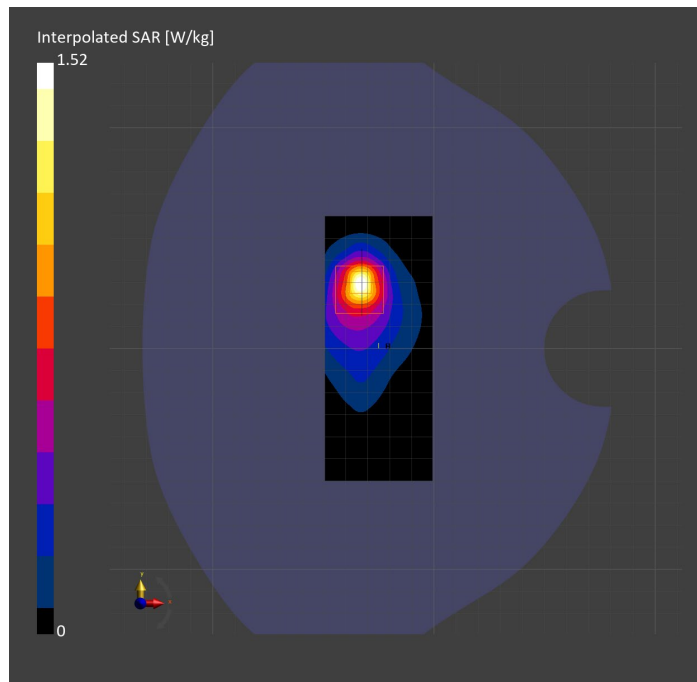
Probe   Calibration Date	EX3DV4 - SN7806   2023-04-04	Phantom	Twin-SAM V8.0 (30deg probe tilt)
DAE   Calibration Date	DAE4 Sn1784   2023-04-03	TSL Type	HBBL-600-10000
Software Version	16.2.4.2524		

## Scan Setup

	Area Scan	Zoom Scan
Grid Extents [mm]	48.6 x 120.0	30.0 x 30.0 x 30.0
Grid Steps [mm]	8.1 x 15.0	6.0 x 6.0 x 1.5
Sensor Surface [mm]	3.0	1.4
Graded Grid	N/A	Yes
M2/M1 [%]		56.2
Dist 3dB Peak [mm]		7.0

## Measurement Results

	Area Scan	Zoom Scan
psSAR1g [W/Kg]	0.387	<b>0.413</b>
psSAR10g [W/Kg]	0.196	<b>0.165</b>
Power Drift [dB]	N/A	-0.07



# Measurement Report for Band 7: LTE-FDD (SC-FDMA, 1 RB, 20 MHz, QPSK) RBPosition:Mid AntennaCfg:SISO, EDGE RIGHT

## Exposure Conditions

Band	Band 7	TSL Permittivity	38.0
Frequency [MHz]   Channel Number	2510.000   20850	TSL Conductivity [S/m]	1.85
Group   UID	LTE-FDD   10169-CAF	Phantom Section   TSL	Flat   HSL
Conversion Factor	7.33	Test Distance [mm]	5.00

## Hardware Setup

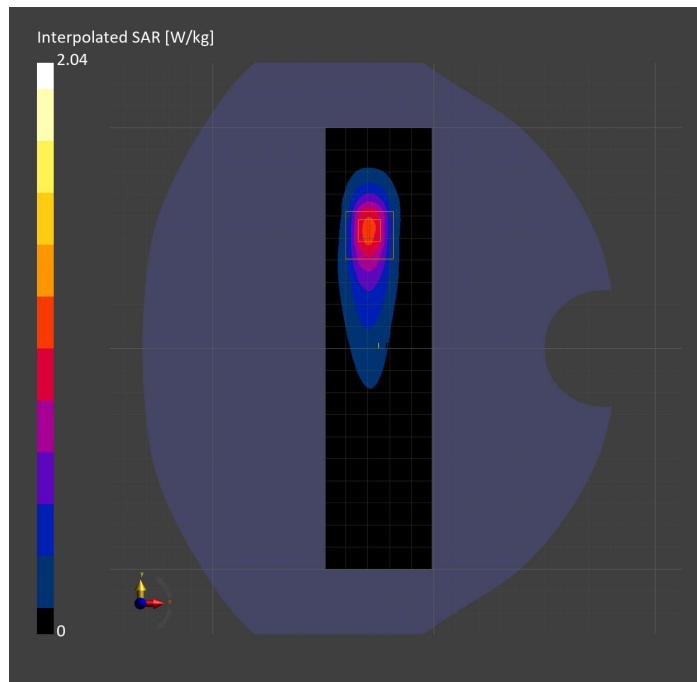
Probe   Calibration Date	EX3DV4 - SN7808   2023-04-18	Phantom	Twin-SAM V8.0 (30deg probe tilt)
DAE   Calibration Date	DAE4 Sn1796   2023-04-03	TSL Type	HBBL-600-10000
Software Version	16.2.4.2524		

## Scan Setup

	Area Scan	Zoom Scan
Grid Extents [mm]	48.0 x 200.0	30.0 x 30.0 x 30.0
Grid Steps [mm]	8.0 x 10.0	5.0 x 5.0 x 1.5
Sensor Surface [mm]	3.0	1.4
Graded Grid	N/A	Yes
M2/M1 [%]		76.6
Dist 3dB Peak [mm]		7.0

## Measurement Results

	Area Scan	Zoom Scan
psSAR1g [W/Kg]	0.841	<b>0.882</b>
psSAR10g [W/Kg]	0.372	<b>0.378</b>
Power Drift [dB]	N/A	0.02



# Measurement Report for Band 7: LTE-FDD (SC-FDMA, 50% RB, 20 MHz, QPSK) RBPosition:Mid AntennaCfg:SISO, BACK

## Exposure Conditions

Band	Band 7	TSL Permittivity	37.4
Frequency [MHz]   Channel Number	2560.000   21350	TSL Conductivity [S/m]	1.89
Group   UID	LTE-FDD   10297-AAE	Phantom Section   TSL	Flat   HSL
Conversion Factor	7.32	Test Distance [mm]	5.00

## Hardware Setup

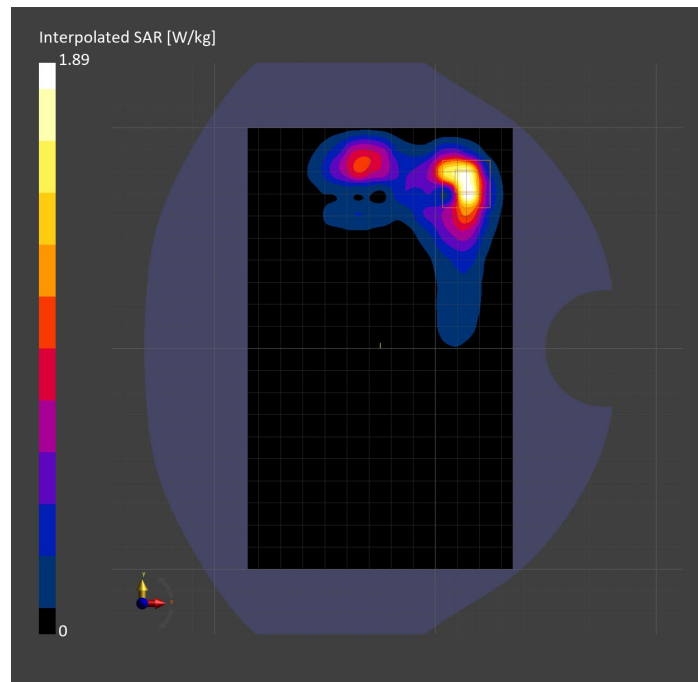
Probe   Calibration Date	EX3DV4 - SN3885   2022-09-20	Phantom	Twin-SAM V5.0 (30deg probe tilt)
DAE   Calibration Date	DAE4 Sn1548   2023-02-14	TSL Type	HBBL-600-10000
Software Version	16.2.4.2524		

## Scan Setup

	Area Scan	Zoom Scan
Grid Extents [mm]	120.0 x 200.0	30.0 x 30.0 x 30.0
Grid Steps [mm]	10.0 x 10.0	5.0 x 5.0 x 1.5
Sensor Surface [mm]	3.0	1.4
Graded Grid	N/A	Yes
M2/M1 [%]		78.0
Dist 3dB Peak [mm]		5.9

## Measurement Results

	Area Scan	Zoom Scan
psSAR1g [W/Kg]	0.741	<b>0.782</b>
psSAR10g [W/Kg]	0.313	<b>0.305</b>
Power Drift [dB]	N/A	-0.02



# Measurement Report for Band 7: LTE-FDD (SC-FDMA, 50% RB, 20 MHz, QPSK) RBPosition:Mid AntennaCfg:SISO, CHEEK

## Exposure Conditions

Band	Band 7	TSL Permittivity	40.3
Frequency [MHz]   Channel Number	2535.000   21100	TSL Conductivity [S/m]	1.91
Group   UID	LTE-FDD   10297-AAE	Phantom Section   TSL	LeftHead   HSL
Conversion Factor	7.33	Test Distance [mm]	0.00

## Hardware Setup

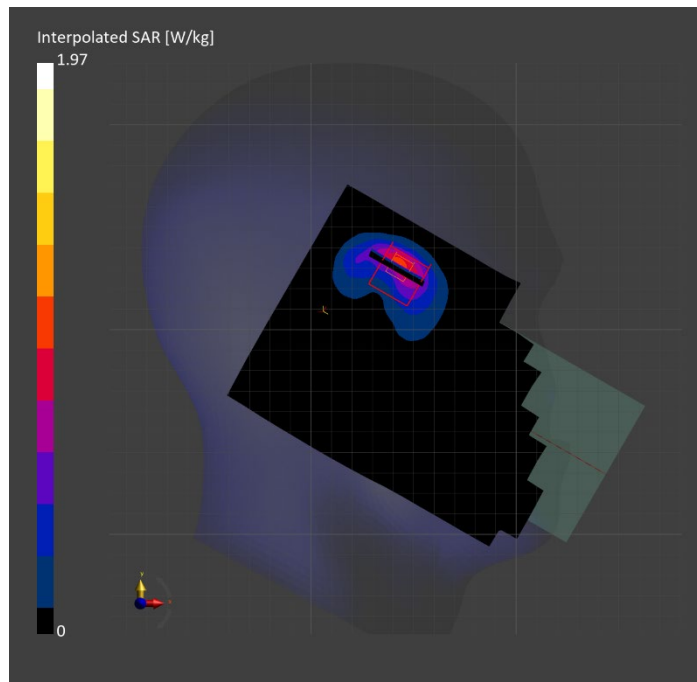
Probe   Calibration Date	EX3DV4 - SN7808   2023-04-18	Phantom	Twin-SAM V8.0 (30deg probe tilt)
DAE   Calibration Date	DAE4 Sn1796   2023-04-03	TSL Type	HBBL-600-10000
Software Version	16.2.4.2524		

## Scan Setup

	Area Scan	Zoom Scan
Grid Extents [mm]	120.0 x 200.0	30.0 x 30.0 x 30.0
Grid Steps [mm]	10.0 x 10.0	5.0 x 5.0 x 1.5
Sensor Surface [mm]	3.0	1.4
Graded Grid	N/A	Yes
M2/M1 [%]		74.2
Dist 3dB Peak [mm]		6.2

## Measurement Results

	Area Scan	Zoom Scan
psSAR1g [W/Kg]	0.741	<b>0.795</b>
psSAR10g [W/Kg]	0.333	<b>0.347</b>
Power Drift [dB]	N/A	-0.00



# Measurement Report for Band 12: LTE-FDD (SC-FDMA, 1 RB, 10 MHz, QPSK) RBPosition:Mid AntennaCfg:SISO, EDGE RIGHT

## Exposure Conditions

Band	Band 12	TSL Permittivity	43.6
Frequency [MHz]   Channel Number	707.500   23095	TSL Conductivity [S/m]	0.858
Group   UID	LTE-FDD   10175-CAH	Phantom Section   TSL	Flat   HSL
Conversion Factor	10.62	Test Distance [mm]	5.00

## Hardware Setup

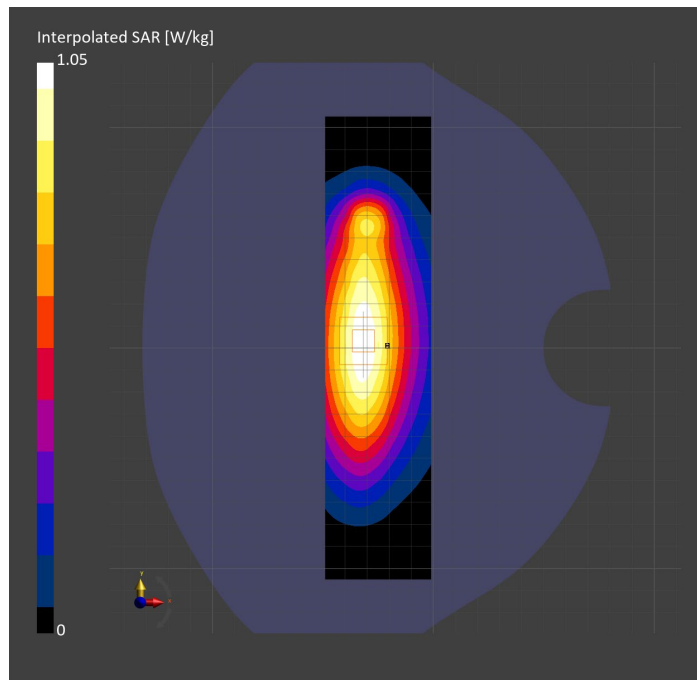
Probe   Calibration Date	EX3DV4 - SN7589   2023-04-18	Phantom	Twin-SAM V5.0 (30deg probe tilt)
DAE   Calibration Date	DAE4 Sn1544   2023-01-24	TSL Type	HBBL-600-10000
Software Version	16.2.4.2524		

## Scan Setup

	Area Scan	Zoom Scan
Grid Extents [mm]	48.0 x 210.0	30.0 x 30.0 x 30.0
Grid Steps [mm]	8.0 x 15.0	6.0 x 6.0 x 1.5
Sensor Surface [mm]	3.0	1.4
Graded Grid	N/A	Yes
M2/M1 [%]		87.3
Dist 3dB Peak [mm]		> 15.0

## Measurement Results

	Area Scan	Zoom Scan
psSAR1g [W/Kg]	0.691	<b>0.689</b>
psSAR10g [W/Kg]	0.463	<b>0.464</b>
Power Drift [dB]	N/A	-0.03



# Measurement Report for Band 12: LTE-FDD (SC-FDMA, 1 RB, 10 MHz, QPSK) RBPosition:Mid AntennaCfg:SISO, CHEEK

## Exposure Conditions

Band	Band 12	TSL Permittivity	41.9
Frequency [MHz]   Channel Number	707.500   23095	TSL Conductivity [S/m]	0.881
Group   UID	LTE-FDD   10175-CAH	Phantom Section   TSL	RightHead   HSL
Conversion Factor	8.93	Test Distance [mm]	0.00

## Hardware Setup

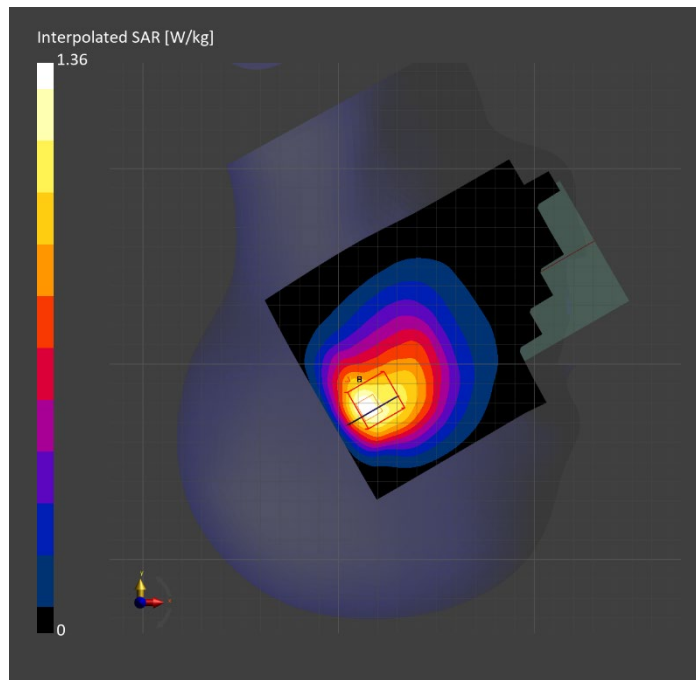
Probe   Calibration Date	EX3DV4 - SN7448   2023-02-14	Phantom	Twin-SAM V5.0 (30deg probe tilt)
DAE   Calibration Date	DAE4 Sn1472   2023-01-23	TSL Type	HBBL-600-10000
Software Version	16.2.4.2524		

## Scan Setup

	Area Scan	Zoom Scan
Grid Extents [mm]	120.0 x 180.0	30.0 x 30.0 x 30.0
Grid Steps [mm]	15.0 x 15.0	6.0 x 6.0 x 1.5
Sensor Surface [mm]	3.0	1.4
Graded Grid	N/A	Yes
M2/M1 [%]		74.2
Dist 3dB Peak [mm]		7.4

## Measurement Results

	Area Scan	Zoom Scan
psSAR1g [W/Kg]	0.628	<b>0.630</b>
psSAR10g [W/Kg]	0.411	<b>0.385</b>
Power Drift [dB]	N/A	-0.03



# Measurement Report for Band 12: LTE-FDD (SC-FDMA, 1 RB, 10 MHz, QPSK) RBPosition:Mid AntennaCfg:SISO, BACK

## Exposure Conditions

Band	Band 12	TSL Permittivity	41.9
Frequency [MHz]   Channel Number	707.500   23095	TSL Conductivity [S/m]	0.881
Group   UID	LTE-FDD   10175-CAH	Phantom Section   TSL	Flat   HSL
Conversion Factor	8.93	Test Distance [mm]	5.00

## Hardware Setup

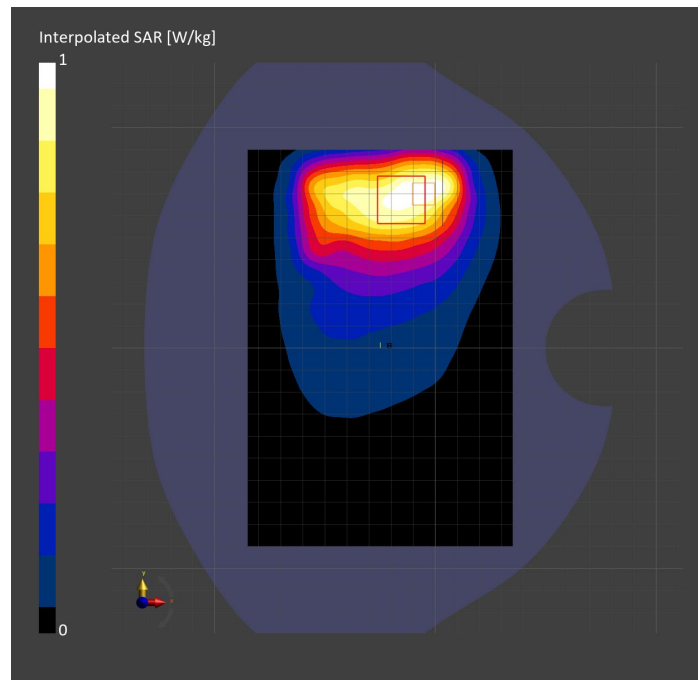
Probe   Calibration Date	EX3DV4 - SN7448   2023-02-14	Phantom	Twin-SAM V5.0 (30deg probe tilt)
DAE   Calibration Date	DAE4 Sn1472   2023-01-23	TSL Type	HBBL-600-10000
Software Version	16.2.4.2524		

## Scan Setup

	Area Scan	Zoom Scan
Grid Extents [mm]	120.0 x 180.0	30.0 x 30.0 x 30.0
Grid Steps [mm]	15.0 x 15.0	6.0 x 6.0 x 1.5
Sensor Surface [mm]	3.0	1.4
Graded Grid	N/A	Yes
M2/M1 [%]		75.9
Dist 3dB Peak [mm]		12.0

## Measurement Results

	Area Scan	Zoom Scan
psSAR1g [W/Kg]	0.536	<b>0.514</b>
psSAR10g [W/Kg]	0.363	<b>0.326</b>
Power Drift [dB]	N/A	-0.05





# Measurement Report for Band 13: LTE-FDD (SC-FDMA, 1 RB, 10 MHz, QPSK) RBPosition:Mid AntennaCfg:SISO, EDGE RIGHT

## Exposure Conditions

Band	Band 13	TSL Permittivity	43.3
Frequency [MHz]   Channel Number	782.000   23230	TSL Conductivity [S/m]	0.888
Group   UID	LTE-FDD   10175-CAH	Phantom Section   TSL	Flat   HSL
Conversion Factor	10.62	Test Distance [mm]	5.00

## Hardware Setup

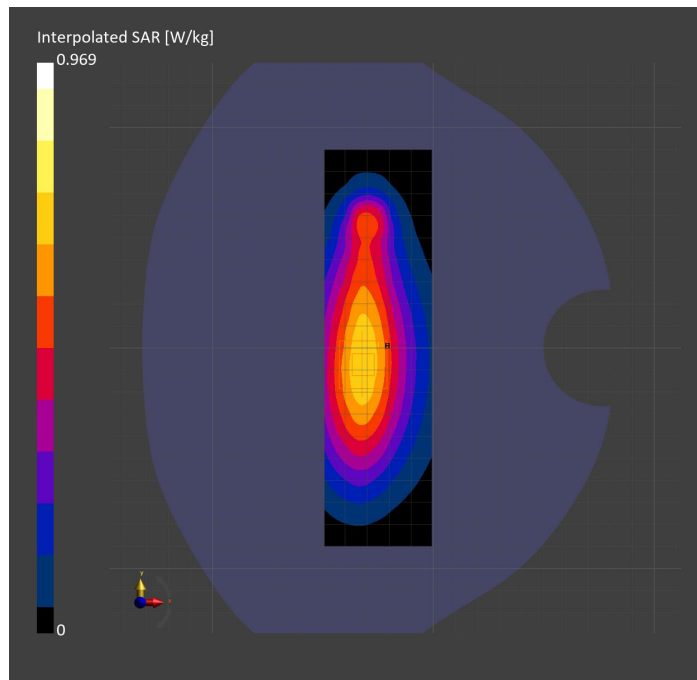
Probe   Calibration Date	EX3DV4 - SN7589   2023-04-18	Phantom	Twin-SAM V5.0 (30deg probe tilt)
DAE   Calibration Date	DAE4 Sn1544   2023-01-24	TSL Type	HBBL-600-10000
Software Version	16.2.4.2524		

## Scan Setup

	Area Scan	Zoom Scan
Grid Extents [mm]	48.6 x 180.0	30.0 x 30.0 x 30.0
Grid Steps [mm]	8.1 x 15.0	6.0 x 6.0 x 1.5
Sensor Surface [mm]	3.0	1.4
Graded Grid	N/A	Yes
M2/M1 [%]		86.5
Dist 3dB Peak [mm]		> 15.0

## Measurement Results

	Area Scan	Zoom Scan
psSAR1g [W/Kg]	0.626	<b>0.628</b>
psSAR10g [W/Kg]	0.416	<b>0.418</b>
Power Drift [dB]	N/A	0.00



# Measurement Report for Band 13: LTE-FDD (SC-FDMA, 1 RB, 10 MHz, QPSK) RBPosition:Mid AntennaCfg:SISO, CHEEK

## Exposure Conditions

Band	Band 13	TSL Permittivity	41.3
Frequency [MHz]   Channel Number	782.000   23230	TSL Conductivity [S/m]	0.901
Group   UID	LTE-FDD   10175-CAH	Phantom Section   TSL	RightHead   HSL
Conversion Factor	8.93	Test Distance [mm]	0.00

## Hardware Setup

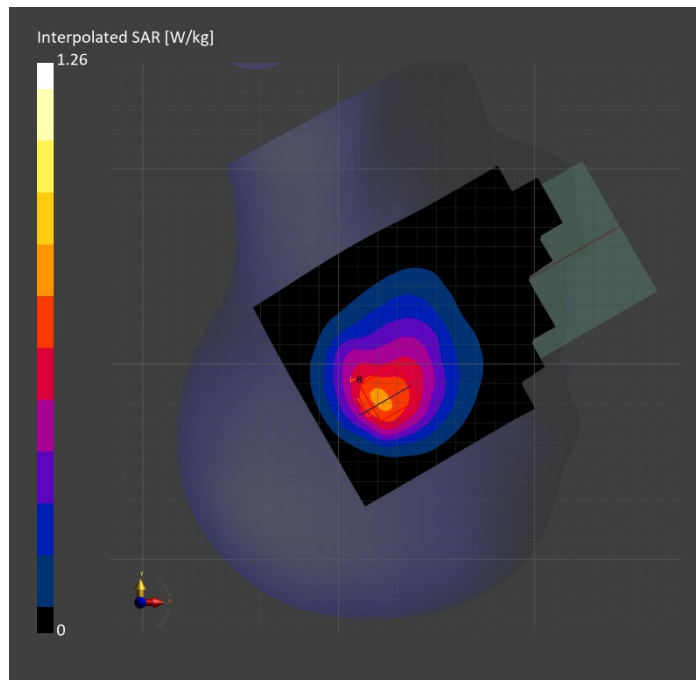
Probe   Calibration Date	EX3DV4 - SN7448   2023-02-14	Phantom	Twin-SAM V5.0 (30deg probe tilt)
DAE   Calibration Date	DAE4 Sn1472   2023-01-23	TSL Type	HBBL-600-10000
Software Version	16.2.4.2524		

## Scan Setup

	Area Scan	Zoom Scan
Grid Extents [mm]	120.0 x 210.0	30.0 x 30.0 x 30.0
Grid Steps [mm]	15.0 x 15.0	6.0 x 6.0 x 1.5
Sensor Surface [mm]	3.0	1.4
Graded Grid	N/A	Yes
M2/M1 [%]		78.0
Dist 3dB Peak [mm]		10.4

## Measurement Results

	Area Scan	Zoom Scan
psSAR1g [W/Kg]	0.664	<b>0.648</b>
psSAR10g [W/Kg]	0.442	<b>0.424</b>
Power Drift [dB]	N/A	0.00



# Measurement Report for Band 13: LTE-FDD (SC-FDMA, 1 RB, 10 MHz, QPSK) RBPosition:Mid AntennaCfg:SISO, BACK

## Exposure Conditions

Band	Band 13	TSL Permittivity	40.8
Frequency [MHz]   Channel Number	782.000   23230	TSL Conductivity [S/m]	0.886
Group   UID	LTE-FDD   10175-CAH	Phantom Section   TSL	Flat   HSL
Conversion Factor	8.93	Test Distance [mm]	5.00

## Hardware Setup

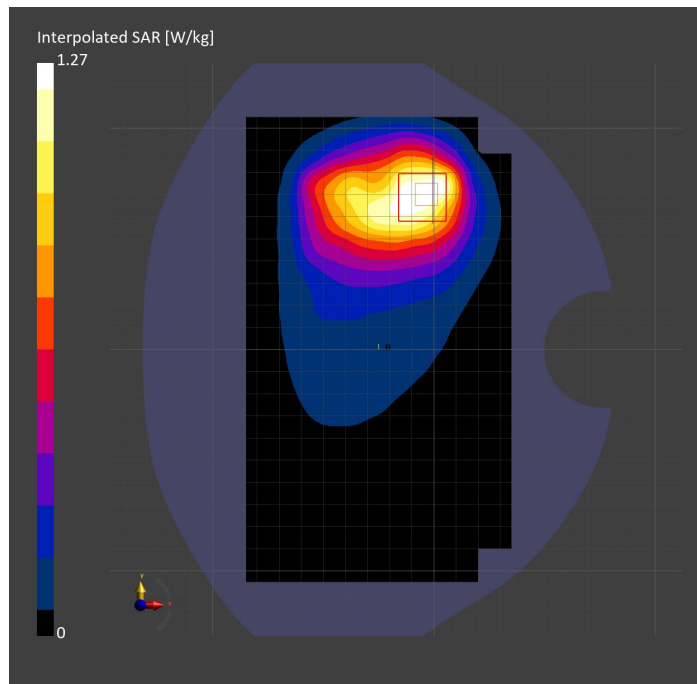
Probe   Calibration Date	EX3DV4 - SN7448   2023-02-14	Phantom	Twin-SAM V5.0 (30deg probe tilt)
DAE   Calibration Date	DAE4 Sn1472   2023-01-23	TSL Type	HBBL-600-10000
Software Version	16.2.4.2524		

## Scan Setup

	Area Scan	Zoom Scan
Grid Extents [mm]	120.0 x 210.0	30.0 x 30.0 x 30.0
Grid Steps [mm]	15.0 x 15.0	6.0 x 6.0 x 1.5
Sensor Surface [mm]	3.0	1.4
Graded Grid	N/A	Yes
M2/M1 [%]		83.2
Dist 3dB Peak [mm]		12.8

## Measurement Results

	Area Scan	Zoom Scan
psSAR1g [W/Kg]	0.685	<b>0.698</b>
psSAR10g [W/Kg]	0.460	<b>0.413</b>
Power Drift [dB]	N/A	-0.01



# Measurement Report for Band 14: LTE-FDD (SC-FDMA, 1 RB, 10 MHz, QPSK) RBPosition:Mid AntennaCfg:SISO, EDGE RIGHT

## Exposure Conditions

Band	Band 14	TSL Permittivity	42.8
Frequency [MHz]   Channel Number	793.000   23330	TSL Conductivity [S/m]	0.891
Group   UID	LTE-FDD   10175-CAH	Phantom Section   TSL	Flat   HSL
Conversion Factor	10.62	Test Distance [mm]	5.00

## Hardware Setup

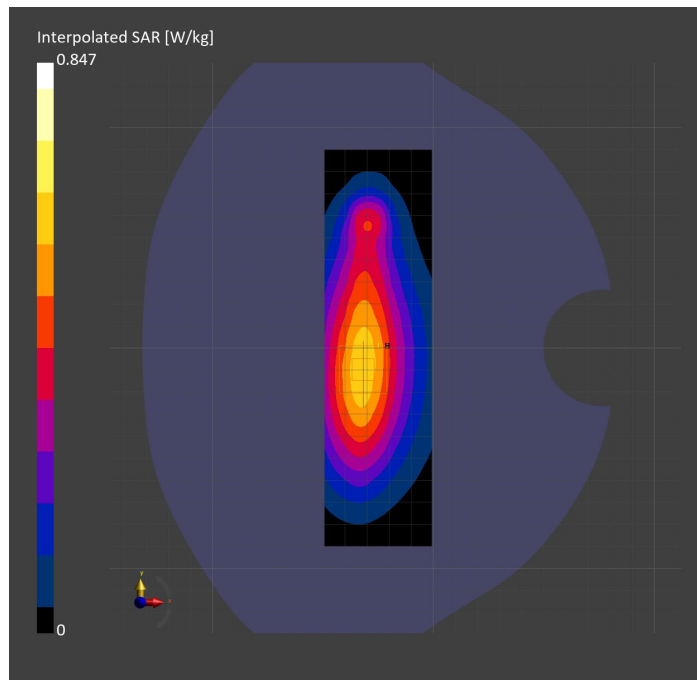
Probe   Calibration Date	EX3DV4 - SN7589   2023-04-18	Phantom	Twin-SAM V5.0 (30deg probe tilt)
DAE   Calibration Date	DAE4 Sn1544   2023-01-24	TSL Type	HBBL-600-10000
Software Version	16.2.4.2524		

## Scan Setup

	Area Scan	Zoom Scan
Grid Extents [mm]	48.6 x 180.0	30.0 x 30.0 x 30.0
Grid Steps [mm]	8.1 x 15.0	6.0 x 6.0 x 1.5
Sensor Surface [mm]	3.0	1.4
Graded Grid	N/A	Yes
M2/M1 [%]		87.1
Dist 3dB Peak [mm]		18.4

## Measurement Results

	Area Scan	Zoom Scan
psSAR1g [W/Kg]	0.540	<b>0.542</b>
psSAR10g [W/Kg]	0.357	<b>0.358</b>
Power Drift [dB]	N/A	0.01



# Measurement Report for Band 14: LTE-FDD (SC-FDMA, 1 RB, 10 MHz, QPSK) RBPosition:Mid AntennaCfg:SISO, CHEEK

## Exposure Conditions

Band	Band 14	TSL Permittivity	41.3
Frequency [MHz]   Channel Number	793.000   23330	TSL Conductivity [S/m]	0.910
Group   UID	LTE-FDD   10175-CAH	Phantom Section   TSL	RightHead   HSL
Conversion Factor	8.93	Test Distance [mm]	0.00

## Hardware Setup

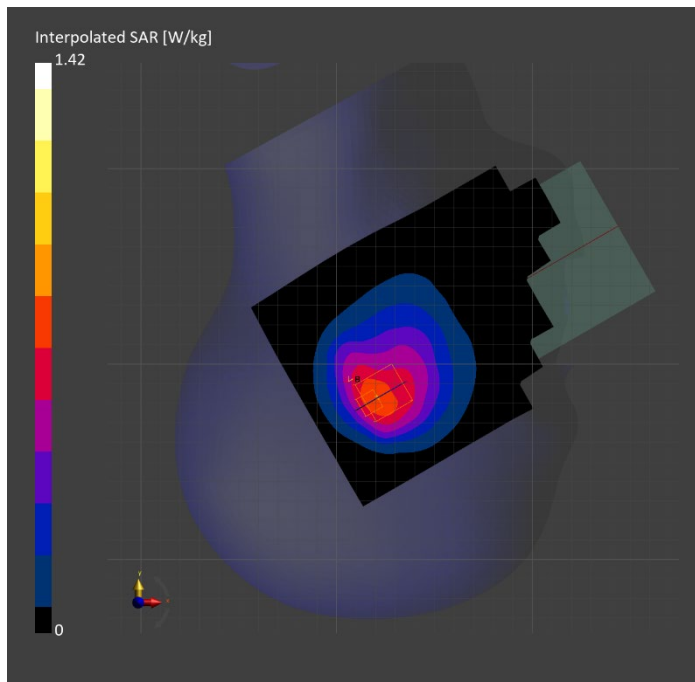
Probe   Calibration Date	EX3DV4 - SN7448   2023-02-14	Phantom	Twin-SAM V5.0 (30deg probe tilt)
DAE   Calibration Date	DAE4 Sn1472   2023-01-23	TSL Type	HBBL-600-10000
Software Version	16.2.4.2524		

## Scan Setup

	Area Scan	Zoom Scan
Grid Extents [mm]	120.0 x 210.0	30.0 x 30.0 x 30.0
Grid Steps [mm]	15.0 x 15.0	6.0 x 6.0 x 1.5
Sensor Surface [mm]	3.0	1.4
Graded Grid	N/A	Yes
M2/M1 [%]		74.8
Dist 3dB Peak [mm]		8.1

## Measurement Results

	Area Scan	Zoom Scan
psSAR1g [W/Kg]	0.703	<b>0.676</b>
psSAR10g [W/Kg]	0.461	<b>0.433</b>
Power Drift [dB]	N/A	-0.00



# Measurement Report for Band 14: LTE-FDD (SC-FDMA, 1 RB, 10 MHz, QPSK) RBPosition:Mid AntennaCfg:SISO, BACK

## Exposure Conditions

Band	Band 14	TSL Permittivity	40.8
Frequency [MHz]   Channel Number	793.000   23330	TSL Conductivity [S/m]	0.891
Group   UID	LTE-FDD   10175-CAH	Phantom Section   TSL	Flat   HSL
Conversion Factor	8.93	Test Distance [mm]	5.00

## Hardware Setup

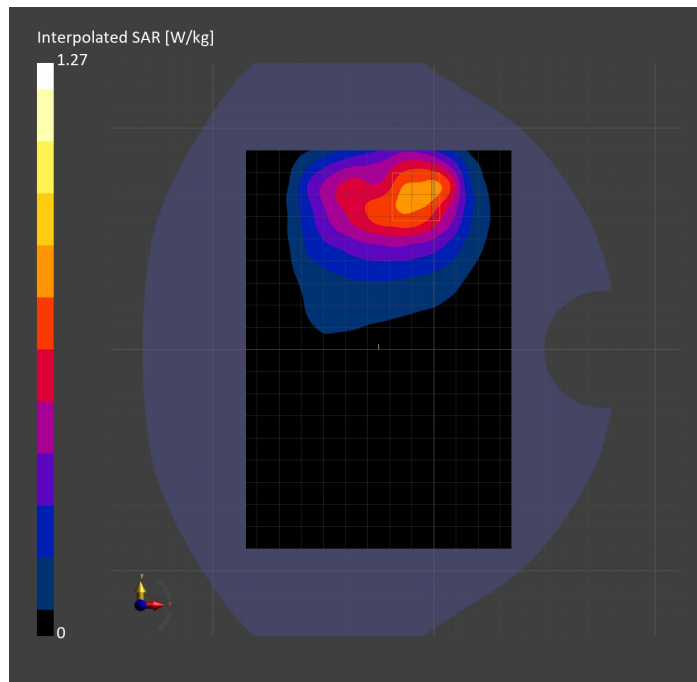
Probe   Calibration Date	EX3DV4 - SN7448   2023-02-14	Phantom	Twin-SAM V5.0 (30deg probe tilt)
DAE   Calibration Date	DAE4 Sn1472   2023-01-23	TSL Type	HBBL-600-10000
Software Version	16.2.4.2524		

## Scan Setup

	Area Scan	Zoom Scan
Grid Extents [mm]	120.0 x 180.0	30.0 x 30.0 x 30.0
Grid Steps [mm]	15.0 x 15.0	6.0 x 6.0 x 1.5
Sensor Surface [mm]	3.0	1.4
Graded Grid	N/A	Yes
M2/M1 [%]		81.4
Dist 3dB Peak [mm]		14.7

## Measurement Results

	Area Scan	Zoom Scan
psSAR1g [W/Kg]	0.699	<b>0.713</b>
psSAR10g [W/Kg]	0.470	<b>0.425</b>
Power Drift [dB]	N/A	-0.00



# Measurement Report for Band 25: LTE-FDD (SC-FDMA, 50% RB, 20 MHz, QPSK) RBPosition:Mid AntennaCfg:SISO, CHEEK

## Exposure Conditions

Band	Band 25	TSL Permittivity	38.1
Frequency [MHz]   Channel Number	1882.500   26365	TSL Conductivity [S/m]	1.41
Group   UID	LTE-FDD   10297-AAE	Phantom Section   TSL	LeftHead   HSL
Conversion Factor	7.53	Test Distance [mm]	0.00

## Hardware Setup

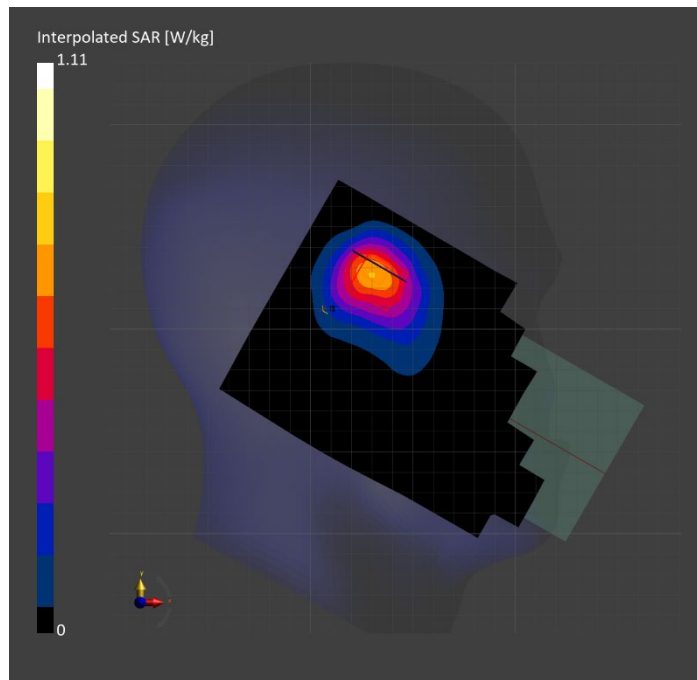
Probe   Calibration Date	EX3DV4 - SN7807   2023-04-11	Phantom	Twin-SAM V8.0 (30deg probe tilt)
DAE   Calibration Date	DAE4 Sn1799   2023-04-04	TSL Type	HBBL-600-10000
Software Version	16.2.4.2524		

## Scan Setup

	Area Scan	Zoom Scan
Grid Extents [mm]	120.0 x 210.0	30.0 x 30.0 x 30.0
Grid Steps [mm]	15.0 x 15.0	6.0 x 6.0 x 1.5
Sensor Surface [mm]	3.0	1.4
Graded Grid	N/A	Yes
M2/M1 [%]		81.7
Dist 3dB Peak [mm]		10.4

## Measurement Results

	Area Scan	Zoom Scan
psSAR1g [W/Kg]	0.598	<b>0.633</b>
psSAR10g [W/Kg]	0.342	<b>0.362</b>
Power Drift [dB]	N/A	-0.05



# Measurement Report for Band 25: LTE-FDD (SC-FDMA, 1 RB, 20 MHz, QPSK) RBPosition:Mid AntennaCfg:SISO, BACK

## Exposure Conditions

Band	Band 25	TSL Permittivity	38.1
Frequency [MHz]   Channel Number	1882.500   26365	TSL Conductivity [S/m]	1.41
Group   UID	LTE-FDD   10169-CAF	Phantom Section   TSL	Flat   HSL
Conversion Factor	7.53	Test Distance [mm]	5.00

## Hardware Setup

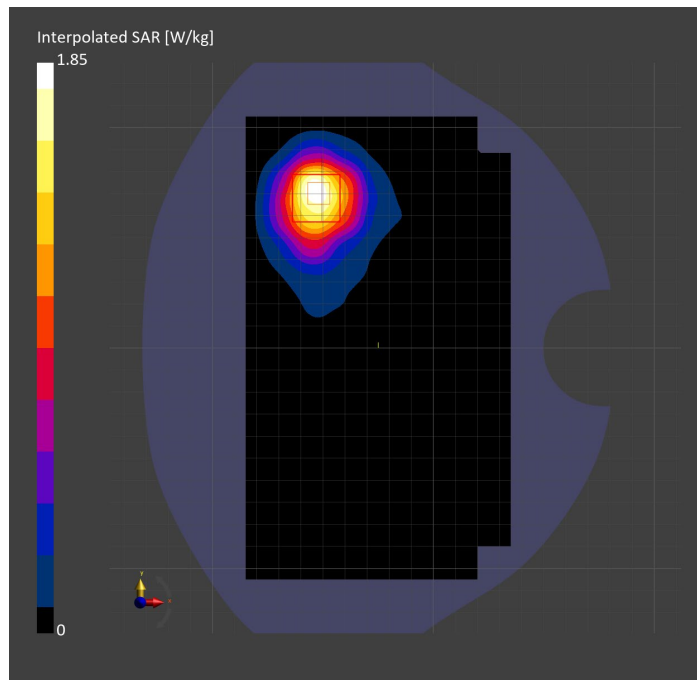
Probe   Calibration Date	EX3DV4 - SN7807   2023-04-11	Phantom	Twin-SAM V8.0 (30deg probe tilt)
DAE   Calibration Date	DAE4 Sn1799   2023-04-04	TSL Type	HBBL-600-10000
Software Version	16.2.4.2524		

## Scan Setup

	Area Scan	Zoom Scan
Grid Extents [mm]	120.0 x 210.0	30.0 x 30.0 x 30.0
Grid Steps [mm]	15.0 x 15.0	6.0 x 6.0 x 1.5
Sensor Surface [mm]	3.0	1.4
Graded Grid	N/A	Yes
M2/M1 [%]		72.0
Dist 3dB Peak [mm]		10.2

## Measurement Results

	Area Scan	Zoom Scan
psSAR1g [W/Kg]	0.781	<b>0.831</b>
psSAR10g [W/Kg]	0.431	<b>0.437</b>
Power Drift [dB]	N/A	-0.04





# Measurement Report for Band 25: LTE-FDD (SC-FDMA, 1 RB, 20 MHz, QPSK) RBPosition:Mid AntennaCfg:SISO, EDGE RIGHT

## Exposure Conditions

Band	Band 25	TSL Permittivity	38.1
Frequency [MHz]   Channel Number	1882.500   26365	TSL Conductivity [S/m]	1.41
Group   UID	LTE-FDD   10169-CAF	Phantom Section   TSL	Flat   HSL
Conversion Factor	7.53	Test Distance [mm]	5.00

## Hardware Setup

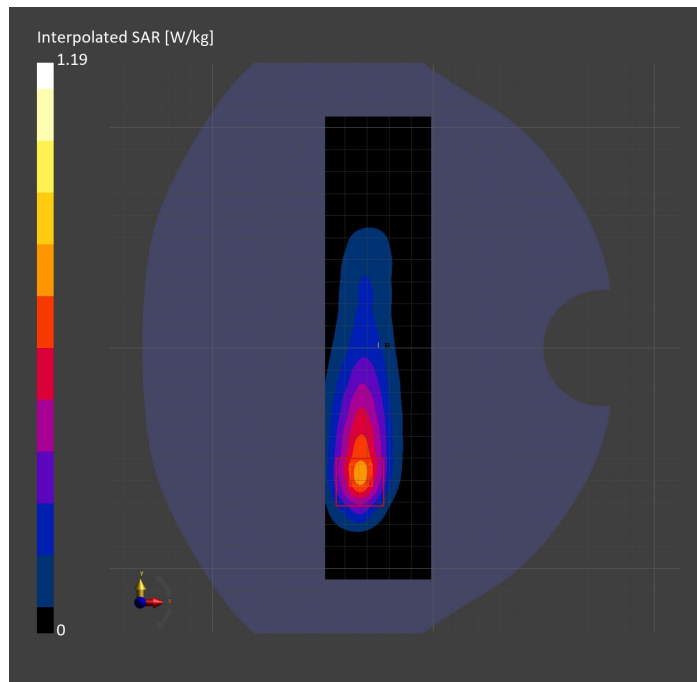
Probe   Calibration Date	EX3DV4 - SN7807   2023-04-11	Phantom	Twin-SAM V8.0 (30deg probe tilt)
DAE   Calibration Date	DAE4 Sn1799   2023-04-04	TSL Type	HBBL-600-10000
Software Version	16.2.4.2524		

## Scan Setup

	Area Scan	Zoom Scan
Grid Extents [mm]	48.0 x 210.0	30.0 x 30.0 x 30.0
Grid Steps [mm]	8.0 x 15.0	6.0 x 6.0 x 1.5
Sensor Surface [mm]	3.0	1.4
Graded Grid	N/A	Yes
M2/M1 [%]		78.5
Dist 3dB Peak [mm]		8.8

## Measurement Results

	Area Scan	Zoom Scan
psSAR1g [W/Kg]	0.587	<b>0.575</b>
psSAR10g [W/Kg]	0.303	<b>0.273</b>
Power Drift [dB]	N/A	0.00



# Measurement Report for Band 26: LTE-FDD (SC-FDMA, 1 RB, 10 MHz, QPSK) RBPosition:Mid AntennaCfg:SISO, BACK

## Exposure Conditions

Band	Band 26	TSL Permittivity	40.7
Frequency [MHz]   Channel Number	831.500   26865	TSL Conductivity [S/m]	0.880
Group   UID	LTE-FDD   10175-CAH	Phantom Section   TSL	Flat   HSL
Conversion Factor	8.76	Test Distance [mm]	0.00

## Hardware Setup

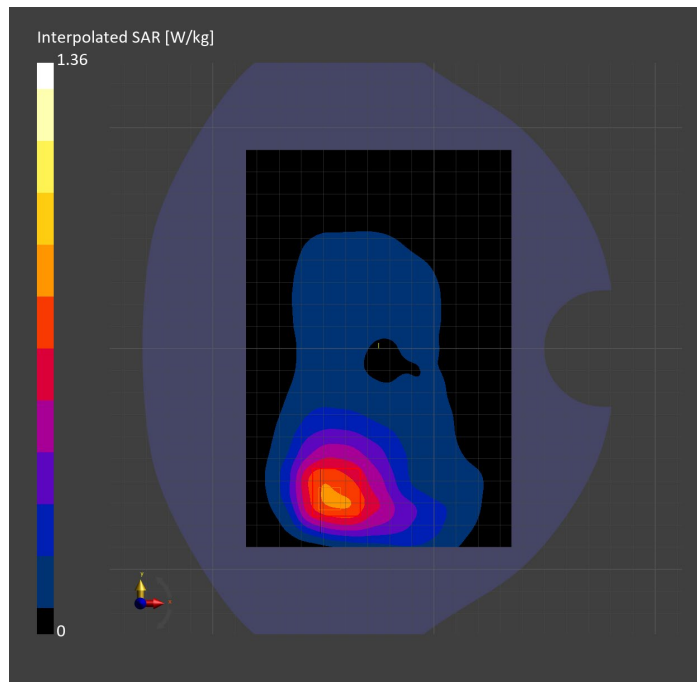
Probe   Calibration Date	EX3DV4 - SN7806   2023-04-04	Phantom	Twin-SAM V8.0 (30deg probe tilt)
DAE   Calibration Date	DAE4 Sn1784   2023-04-03	TSL Type	HBBL-600-10000
Software Version	16.2.4.2524		

## Scan Setup

	Area Scan	Zoom Scan
Grid Extents [mm]	120.0 x 180.0	30.0 x 30.0 x 30.0
Grid Steps [mm]	15.0 x 15.0	6.0 x 6.0 x 1.5
Sensor Surface [mm]	3.0	1.4
Graded Grid	N/A	Yes
M2/M1 [%]		81.7
Dist 3dB Peak [mm]		10.8

## Measurement Results

	Area Scan	Zoom Scan
psSAR1g [W/Kg]	0.724	<b>0.770</b>
psSAR10g [W/Kg]	0.478	<b>0.489</b>
Power Drift [dB]	N/A	-0.03



# Measurement Report for Band 26: LTE-FDD (SC-FDMA, 50% RB, 10 MHz, QPSK) RBPosition:Mid AntennaCfg:SISO, CHEEK

## Exposure Conditions

Band	Band 26	TSL Permittivity	41.1
Frequency [MHz]   Channel Number	831.500   26865	TSL Conductivity [S/m]	0.867
Group   UID	LTE-FDD   10154-CAH	Phantom Section   TSL	RightHead   HSL
Conversion Factor	7.83	Test Distance [mm]	0.00

## Hardware Setup

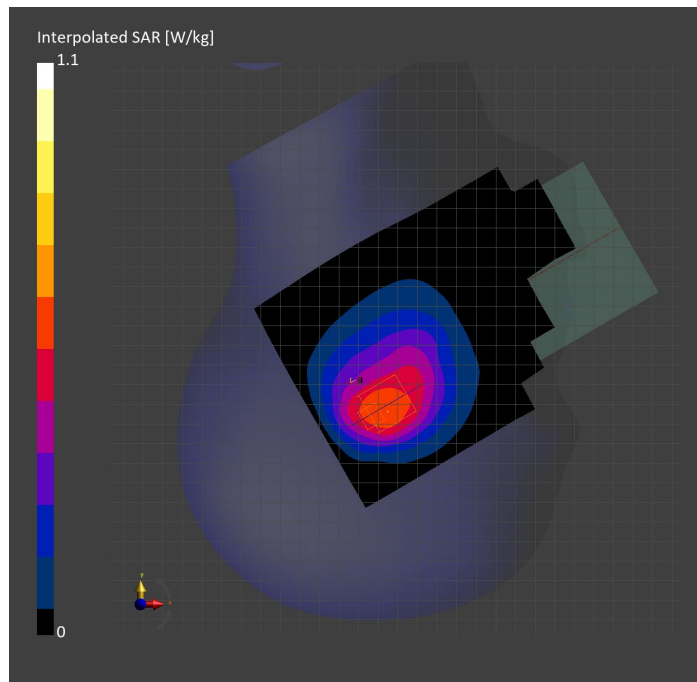
Probe   Calibration Date	EX3DV4 - SN3749   2023-01-27	Phantom	Twin-SAM V8.0 (30deg probe tilt)
DAE   Calibration Date	DAE4 Sn1357   2023-01-27	TSL Type	HBBL-600-10000
Software Version	16.2.4.2524		

## Scan Setup

	Area Scan	Zoom Scan
Grid Extents [mm]	120.0 x 210.0	30.0 x 30.0 x 30.0
Grid Steps [mm]	15.0 x 15.0	6.0 x 6.0 x 1.5
Sensor Surface [mm]	3.0	1.4
Graded Grid	N/A	Yes
M2/M1 [%]		78.0
Dist 3dB Peak [mm]		7.3

## Measurement Results

	Area Scan	Zoom Scan
psSAR1g [W/Kg]	0.550	<b>0.591</b>
psSAR10g [W/Kg]	0.368	<b>0.387</b>
Power Drift [dB]	N/A	-0.01



# Measurement Report for Band 26: LTE-FDD (SC-FDMA, 1 RB, 10 MHz, QPSK) RBPosition:Mid AntennaCfg:SISO, EDGE LEFT

## Exposure Conditions

Band	Band 26	TSL Permittivity	40.7
Frequency [MHz]   Channel Number	831.500   26865	TSL Conductivity [S/m]	0.880
Group   UID	LTE-FDD   10175-CAH	Phantom Section   TSL	Flat   HSL
Conversion Factor	8.76	Test Distance [mm]	5.00

## Hardware Setup

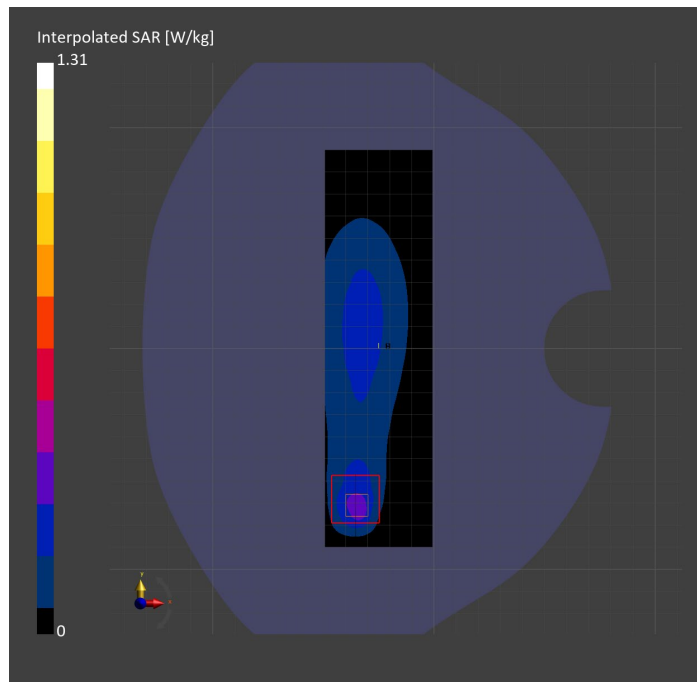
Probe   Calibration Date	EX3DV4 - SN7806   2023-04-04	Phantom	Twin-SAM V8.0 (30deg probe tilt)
DAE   Calibration Date	DAE4 Sn1784   2023-04-03	TSL Type	HBBL-600-10000
Software Version	16.2.4.2524		

## Scan Setup

	Area Scan	Zoom Scan
Grid Extents [mm]	48.6 x 180.0	30.0 x 30.0 x 30.0
Grid Steps [mm]	8.1 x 15.0	6.0 x 6.0 x 1.5
Sensor Surface [mm]	3.0	1.4
Graded Grid	N/A	Yes
M2/M1 [%]		61.8
Dist 3dB Peak [mm]		6.5

## Measurement Results

	Area Scan	Zoom Scan
psSAR1g [W/Kg]	0.308	<b>0.370</b>
psSAR10g [W/Kg]	0.163	<b>0.143</b>
Power Drift [dB]	N/A	-0.06



# Measurement Report for Band 30: LTE-FDD (SC-FDMA, 50% RB, 10 MHz, QPSK) RBPosition:Mid AntennaCfg:SISO, CHEEK

## Exposure Conditions

Band	Band 30	TSL Permittivity	38.8
Frequency [MHz]   Channel Number	2310.000   27710	TSL Conductivity [S/m]	1.62
Group   UID	LTE-FDD   10154-CAH	Phantom Section   TSL	RightHead   HSL
Conversion Factor	7.71	Test Distance [mm]	0.00

## Hardware Setup

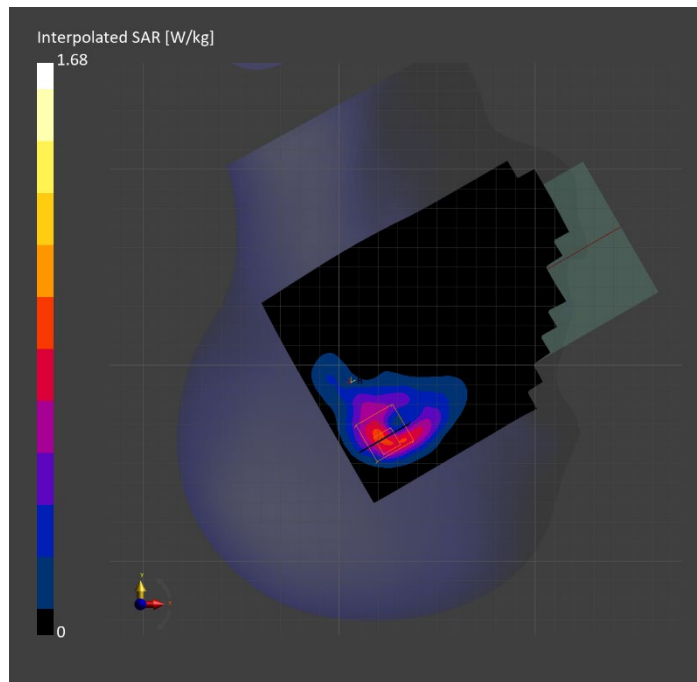
Probe   Calibration Date	EX3DV4 - SN7482   2023-04-18	Phantom	Twin-SAM V8.0 (30deg probe tilt)
DAE   Calibration Date	DAE4 Sn1380   2023-02-14	TSL Type	HBBL-600-10000
Software Version	16.2.4.2524		

## Scan Setup

	Area Scan	Zoom Scan
Grid Extents [mm]	120.0 x 200.0	30.0 x 30.0 x 30.0
Grid Steps [mm]	10.0 x 10.0	5.0 x 5.0 x 1.5
Sensor Surface [mm]	3.0	1.4
Graded Grid	N/A	Yes
M2/M1 [%]		77.1
Dist 3dB Peak [mm]		5.9

## Measurement Results

	Area Scan	Zoom Scan
psSAR1g [W/Kg]	0.667	<b>0.714</b>
psSAR10g [W/Kg]	0.331	<b>0.333</b>
Power Drift [dB]	N/A	-0.02



# Measurement Report for Band 30: LTE-FDD (SC-FDMA, 100% RB, 10 MHz, QPSK) AntennaCfg:SISO, EDGE LEFT

## Exposure Conditions

Band	Band 30	TSL Permittivity	38.6
Frequency [MHz]   Channel Number	2310.000   27710	TSL Conductivity [S/m]	1.68
Group   UID	LTE-FDD   10108-CAH	Phantom Section   TSL	Flat   HSL
Conversion Factor	7.71	Test Distance [mm]	5.00

## Hardware Setup

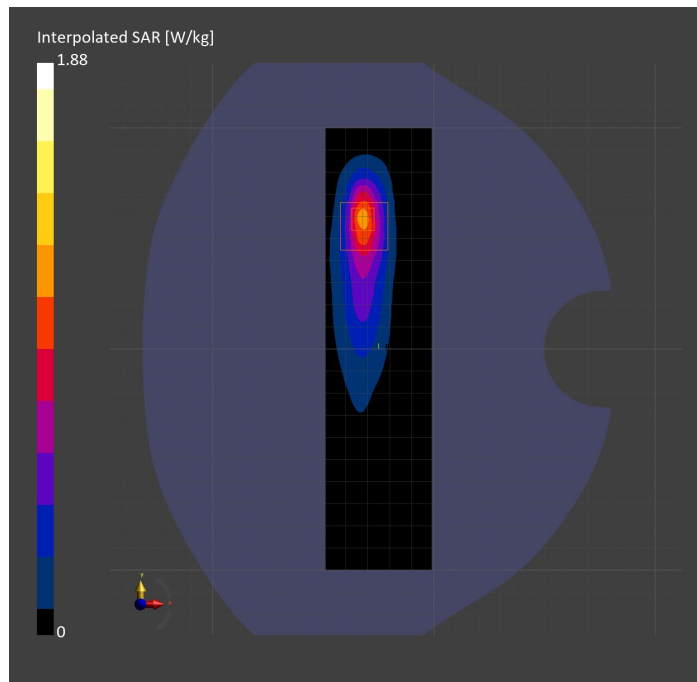
Probe   Calibration Date	EX3DV4 - SN7482   2023-04-18	Phantom	Twin-SAM V8.0 (30deg probe tilt)
DAE   Calibration Date	DAE4 Sn1380   2023-02-14	TSL Type	HBBL-600-10000
Software Version	16.2.4.2524		

## Scan Setup

	Area Scan	Zoom Scan
Grid Extents [mm]	48.0 x 200.0	30.0 x 30.0 x 30.0
Grid Steps [mm]	8.0 x 10.0	5.0 x 5.0 x 1.5
Sensor Surface [mm]	3.0	1.4
Graded Grid	N/A	Yes
M2/M1 [%]		79.5
Dist 3dB Peak [mm]		7.0

## Measurement Results

	Area Scan	Zoom Scan
psSAR1g [W/Kg]	0.863	<b>0.864</b>
psSAR10g [W/Kg]	0.383	<b>0.387</b>
Power Drift [dB]	N/A	-0.01



# Measurement Report for Band 30: LTE-FDD (SC-FDMA, 50% RB, 10 MHz, QPSK) RBPosition:Mid AntennaCfg:SISO, BACK

## Exposure Conditions

Band	Band 30	TSL Permittivity	41.1
Frequency [MHz]   Channel Number	2310.000   27710	TSL Conductivity [S/m]	1.71
Group   UID	LTE-FDD   10154-CAH	Phantom Section   TSL	Flat   HSL
Conversion Factor	7.71	Test Distance [mm]	5.00

## Hardware Setup

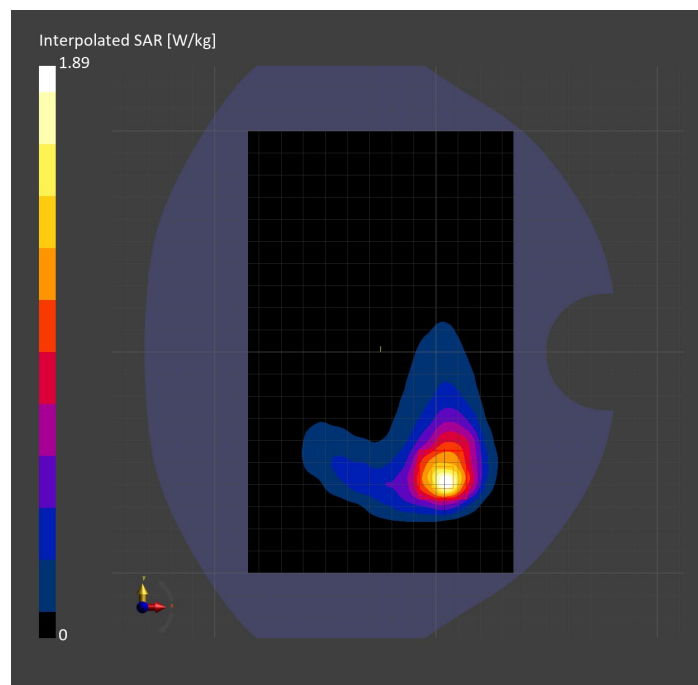
Probe   Calibration Date	EX3DV4 - SN7482   2023-04-18	Phantom	Twin-SAM V8.0 (30deg probe tilt)
DAE   Calibration Date	DAE4 Sn1380   2023-02-14	TSL Type	HBBL-600-10000
Software Version	16.2.4.2524		

## Scan Setup

	Area Scan	Zoom Scan
Grid Extents [mm]	120.0 x 200.0	30.0 x 30.0 x 30.0
Grid Steps [mm]	10.0 x 10.0	5.0 x 5.0 x 1.5
Sensor Surface [mm]	3.0	1.4
Graded Grid	N/A	Yes
M2/M1 [%]		73.4
Dist 3dB Peak [mm]		8.6

## Measurement Results

	Area Scan	Zoom Scan
psSAR1g [W/Kg]	0.740	<b>0.766</b>
psSAR10g [W/Kg]	0.351	<b>0.329</b>
Power Drift [dB]	N/A	-0.01



# Measurement Report for Band 41: LTE-TDD (SC-FDMA, 50% RB, 20 MHz, QPSK, UL Subframe=2,3,4,7,8,9) RBPosition:Mid AntennaCfg:SISO, BACK

## Exposure Conditions

Band	Band 41	TSL Permittivity	38.9
Frequency [MHz]   Channel Number	2593.000   40620	TSL Conductivity [S/m]	1.93
Group   UID	LTE-TDD   10494-AAG	Phantom Section   TSL	Flat   HSL
Conversion Factor	7.32	Test Distance [mm]	5.00

## Hardware Setup

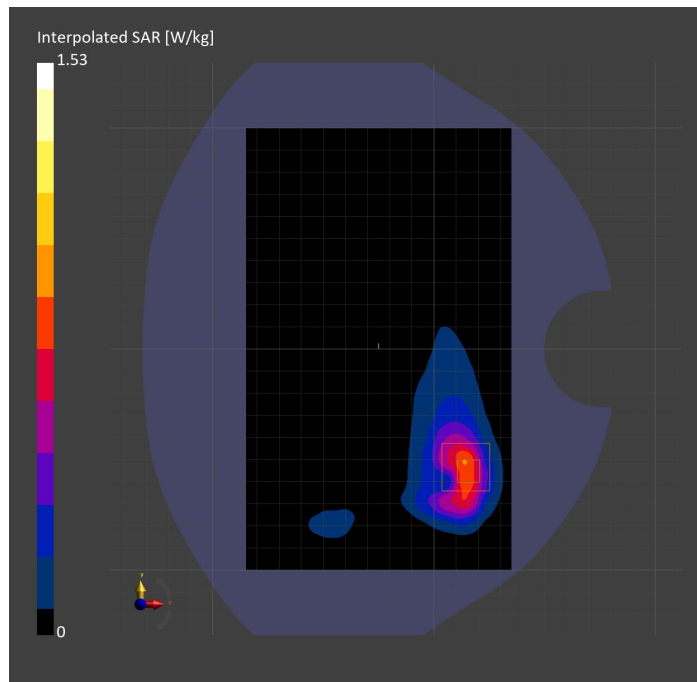
Probe   Calibration Date	EX3DV4 - SN3885   2022-09-20	Phantom	Twin-SAM V5.0 (30deg probe tilt)
DAE   Calibration Date	DAE4 Sn1548   2023-02-14	TSL Type	HBBL-600-10000
Software Version	16.2.4.2524		

## Scan Setup

	Area Scan	Zoom Scan
Grid Extents [mm]	120.0 x 200.0	30.0 x 30.0 x 30.0
Grid Steps [mm]	10.0 x 10.0	5.0 x 5.0 x 1.5
Sensor Surface [mm]	3.0	1.4
Graded Grid	N/A	Yes
M2/M1 [%]		78.8
Dist 3dB Peak [mm]		6.4

## Measurement Results

	Area Scan	Zoom Scan
psSAR1g [W/Kg]	0.674	<b>0.700</b>
psSAR10g [W/Kg]	0.315	<b>0.309</b>
Power Drift [dB]	N/A	-0.00





# Measurement Report for Band 41: LTE-TDD (SC-FDMA, 50% RB, 20 MHz, QPSK, UL Subframe=2,3,4,7,8,9) RBPosition:Mid AntennaCfg:SISO, EDGE LEFT

## Exposure Conditions

Band	Band 41	TSL Permittivity	38.8
Frequency [MHz]   Channel Number	2680.000   41490	TSL Conductivity [S/m]	1.99
Group   UID	LTE-TDD   10494-AAG	Phantom Section   TSL	Flat   HSL
Conversion Factor	7.32	Test Distance [mm]	5.00

## Hardware Setup

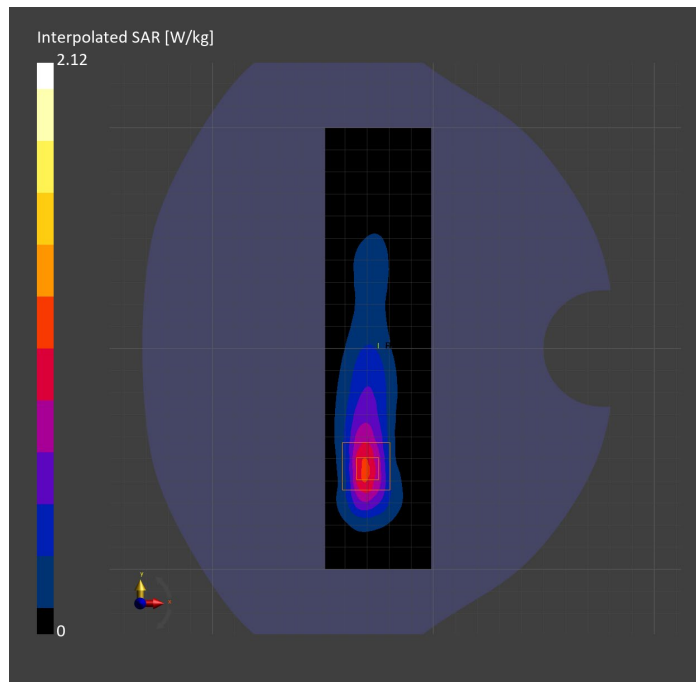
Probe   Calibration Date	EX3DV4 - SN3885   2022-09-20	Phantom	Twin-SAM V5.0 (30deg probe tilt)
DAE   Calibration Date	DAE4 Sn1548   2023-02-14	TSL Type	HBBL-600-10000
Software Version	16.2.4.2524		

## Scan Setup

	Area Scan	Zoom Scan
Grid Extents [mm]	48.0 x 200.0	30.0 x 30.0 x 30.0
Grid Steps [mm]	8.0 x 10.0	5.0 x 5.0 x 1.5
Sensor Surface [mm]	3.0	1.4
Graded Grid	N/A	Yes
M2/M1 [%]		77.3
Dist 3dB Peak [mm]		7.0

## Measurement Results

	Area Scan	Zoom Scan
psSAR1g [W/Kg]	0.826	<b>0.904</b>
psSAR10g [W/Kg]	0.363	<b>0.374</b>
Power Drift [dB]	N/A	-0.05



# Measurement Report for Band 41: LTE-TDD (SC-FDMA, 1 RB, 20 MHz, QPSK, UL Subframe=2,3,4,7,8,9) RBPosition:Mid AntennaCfg:SISO, CHEEK

## Exposure Conditions

Band	Band 41	TSL Permittivity	39.3
Frequency [MHz]   Channel Number	2593.000   40620	TSL Conductivity [S/m]	1.95
Group   UID	LTE-TDD   10435-AAG	Phantom Section   TSL	LeftHead   HSL
Conversion Factor	7.32	Test Distance [mm]	0.00

## Hardware Setup

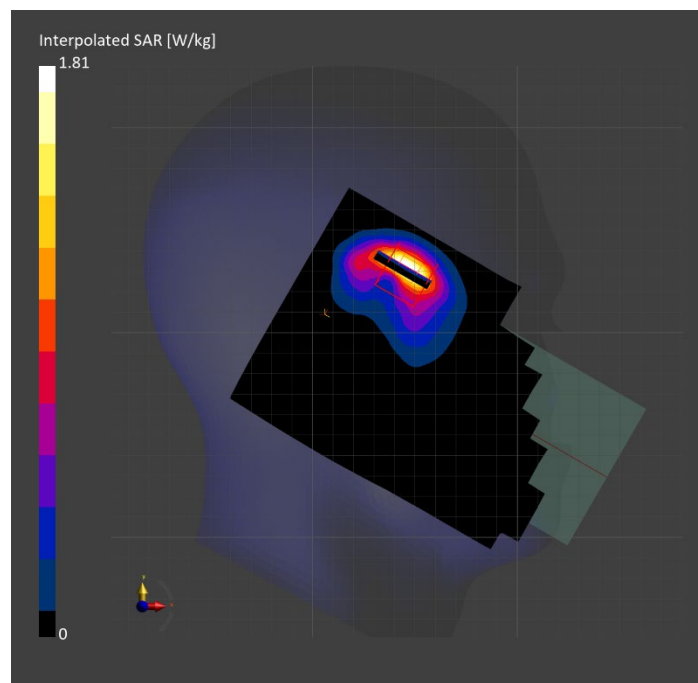
Probe   Calibration Date	EX3DV4 - SN3885   2022-09-20	Phantom	Twin-SAM V5.0 (30deg probe tilt)
DAE   Calibration Date	DAE4 Sn1548   2023-02-14	TSL Type	HBBL-600-10000
Software Version	16.2.4.2524		

## Scan Setup

	Area Scan	Zoom Scan
Grid Extents [mm]	120.0 x 200.0	30.0 x 30.0 x 30.0
Grid Steps [mm]	10.0 x 10.0	5.0 x 5.0 x 1.5
Sensor Surface [mm]	3.0	1.4
Graded Grid	N/A	Yes
M2/M1 [%]		74.0
Dist 3dB Peak [mm]		5.2

## Measurement Results

	Area Scan	Zoom Scan
psSAR1g [W/Kg]	0.688	<b>0.715</b>
psSAR10g [W/Kg]	0.302	<b>0.301</b>
Power Drift [dB]	N/A	0.00



# Measurement Report for Band 48: LTE-TDD (SC-FDMA, 50% RB, 20 MHz, QPSK, UL Subframe=2,3,4,7,8,9) RBPosition:Mid AntennaCfg:SISO, EDGE LEFT

## Exposure Conditions

Band	Band 48	TSL Permittivity	36.9
Frequency [MHz]   Channel Number	3560.000   55340	TSL Conductivity [S/m]	2.95
Group   UID	LTE-TDD   10494-AAG	Phantom Section   TSL	Flat   HSL
Conversion Factor	6.87	Test Distance [mm]	5.00

## Hardware Setup

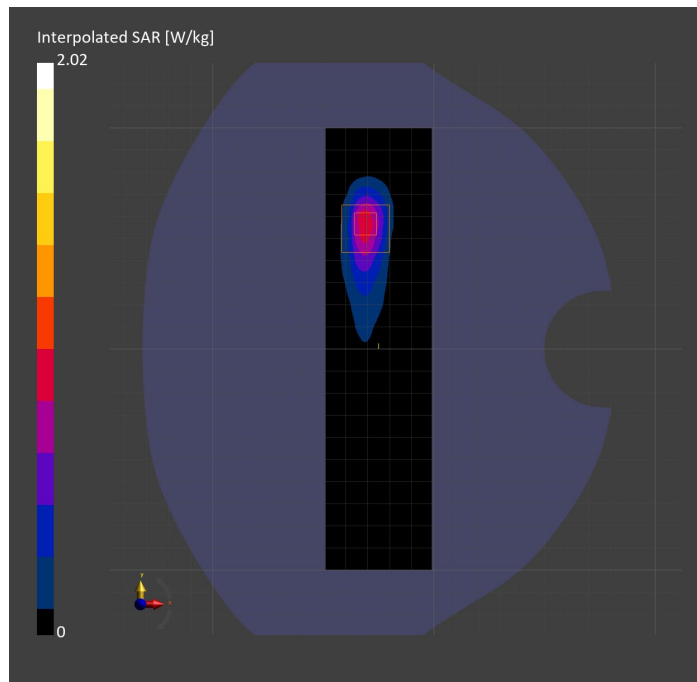
Probe   Calibration Date	EX3DV4 - SN7335   2023-01-26	Phantom	Twin-SAM V8.0 (30deg probe tilt)
DAE   Calibration Date	DAE4ip Sn1619   2023-04-18	TSL Type	HBBL-600-10000
Software Version	16.2.4.2524		

## Scan Setup

	Area Scan	Zoom Scan
Grid Extents [mm]	48.0 x 200.0	30.0 x 30.0 x 28.0
Grid Steps [mm]	8.0 x 10.0	5.0 x 5.0 x 1.4
Sensor Surface [mm]	3.0	1.4
Graded Grid	N/A	Yes
M2/M1 [%]		73.9
Dist 3dB Peak [mm]		7.0

## Measurement Results

	Area Scan	Zoom Scan
psSAR1g [W/Kg]	0.683	<b>0.727</b>
psSAR10g [W/Kg]	0.256	<b>0.261</b>
Power Drift [dB]	N/A	-0.02



# Measurement Report for Band 48: LTE-TDD (SC-FDMA, 1 RB, 20 MHz, QPSK, UL Subframe=2,3,4,7,8,9) RBPosition:Mid AntennaCfg:SISO, BACK

## Exposure Conditions

Band	Band 48	TSL Permittivity	36.7
Frequency [MHz]   Channel Number	3646.700   56207	TSL Conductivity [S/m]	3.04
Group   UID	LTE-TDD   10435-AAG	Phantom Section   TSL	Flat   HSL
Conversion Factor	6.92	Test Distance [mm]	5.00

## Hardware Setup

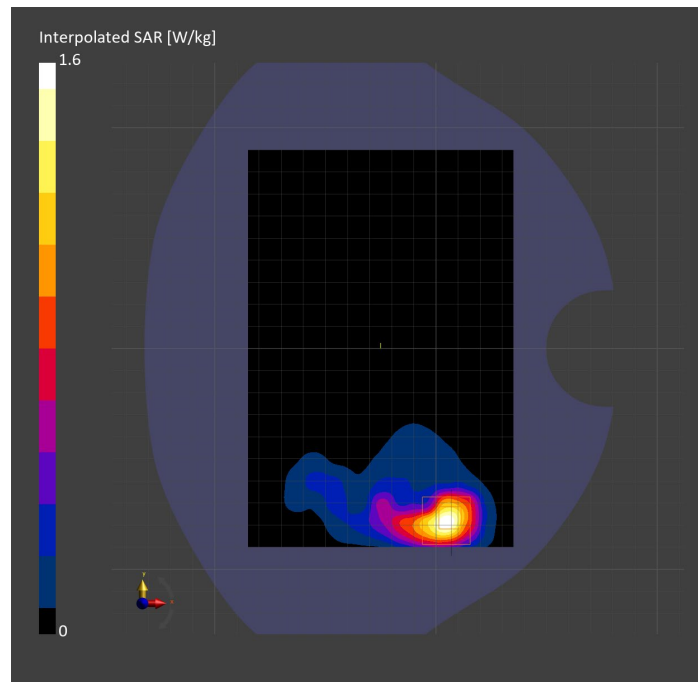
Probe   Calibration Date	EX3DV4 - SN7335   2023-01-26	Phantom	Twin-SAM V8.0 (30deg probe tilt)
DAE   Calibration Date	DAE4ip Sn1619   2023-04-18	TSL Type	HBBL-600-10000
Software Version	16.2.4.2524		

## Scan Setup

	Area Scan	Zoom Scan
Grid Extents [mm]	120.0 x 180.0	30.0 x 30.0 x 28.0
Grid Steps [mm]	10.0 x 10.0	5.0 x 5.0 x 1.4
Sensor Surface [mm]	3.0	1.4
Graded Grid	N/A	Yes
M2/M1 [%]		75.5
Dist 3dB Peak [mm]		7.3

## Measurement Results

	Area Scan	Zoom Scan
psSAR1g [W/Kg]	0.575	<b>0.616</b>
psSAR10g [W/Kg]	0.229	<b>0.230</b>
Power Drift [dB]	N/A	-0.01



# Measurement Report for Band 48: LTE-TDD (SC-FDMA, 100% RB, 20 MHz, QPSK, UL Subframe=2,3,4,7,8,9) AntennaCfg:SISO, CHEEK

## Exposure Conditions

Band	Band 48	TSL Permittivity	38.9
Frequency [MHz]   Channel Number	3646.700   56207	TSL Conductivity [S/m]	3.06
Group   UID	LTE-TDD   10512-AAG	Phantom Section   TSL	LeftHead   HSL
Conversion Factor	6.66	Test Distance [mm]	0.00

## Hardware Setup

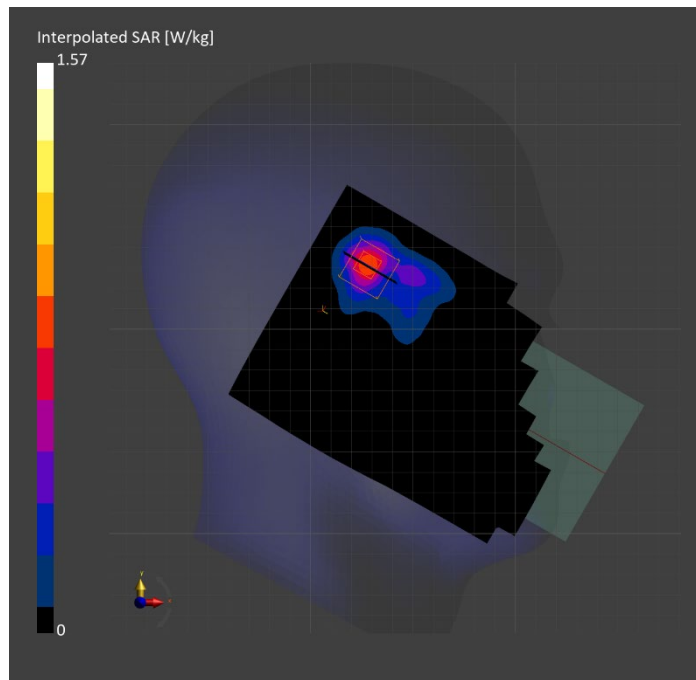
Probe   Calibration Date	EX3DV4 - SN3990   2023-02-17	Phantom	Twin-SAM V5.0 (30deg probe tilt)
DAE   Calibration Date	DAE4 Sn1545   2023-02-14	TSL Type	HBBL-600-10000
Software Version	16.2.4.2524		

## Scan Setup

	Area Scan	Zoom Scan
Grid Extents [mm]	120.0 x 200.0	30.0 x 30.0 x 28.0
Grid Steps [mm]	10.0 x 10.0	5.0 x 5.0 x 1.4
Sensor Surface [mm]	3.0	1.4
Graded Grid	N/A	Yes
M2/M1 [%]		82.3
Dist 3dB Peak [mm]		8.7

## Measurement Results

	Area Scan	Zoom Scan
psSAR1g [W/Kg]	0.640	<b>0.669</b>
psSAR10g [W/Kg]	0.250	<b>0.266</b>
Power Drift [dB]	N/A	-0.00



# Measurement Report for Band 53: LTE-TDD (SC-FDMA, 1 RB, 10 MHz, QPSK, UL Subframe=2,3,4,7,8,9) RBPosition:Mid AntennaCfg:SISO, CHEEK

## Exposure Conditions

Band	Band 53	TSL Permittivity	37.3
Frequency [MHz]   Channel Number	2489.200   60197	TSL Conductivity [S/m]	1.80
Group   UID	LTE-TDD   10470-AAG	Phantom Section   TSL	RightHead   HSL
Conversion Factor	7.33	Test Distance [mm]	0.00

## Hardware Setup

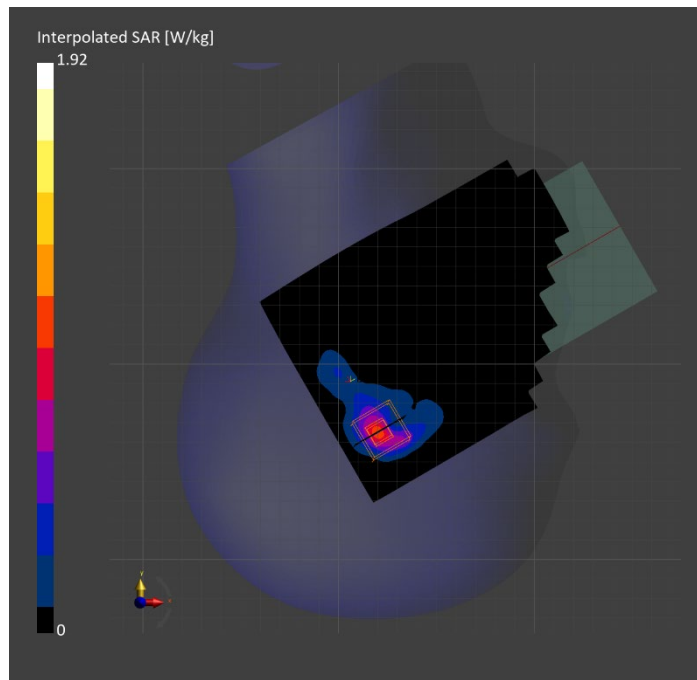
Probe   Calibration Date	EX3DV4 - SN3772   2023-02-13	Phantom	Twin-SAM V8.0 (30deg probe tilt)
DAE   Calibration Date	DAE4 Sn1359   2023-01-24	TSL Type	HBBL-600-10000
Software Version	16.2.4.2524		

## Scan Setup

	Area Scan	Zoom Scan
Grid Extents [mm]	120.0 x 200.0	30.0 x 30.0 x 30.0
Grid Steps [mm]	10.0 x 10.0	5.0 x 5.0 x 1.5
Sensor Surface [mm]	3.0	1.4
Graded Grid	N/A	Yes
M2/M1 [%]		73.2
Dist 3dB Peak [mm]		5.1

## Measurement Results

	Area Scan	Zoom Scan
psSAR1g [W/Kg]	0.727	<b>0.727</b>
psSAR10g [W/Kg]	0.302	<b>0.291</b>
Power Drift [dB]	N/A	0.01



# Measurement Report for Band 53: LTE-TDD (SC-FDMA, 50% RB, 10 MHz, QPSK, UL Subframe=2,3,4,7,8,9) RBPosition:Mid AntennaCfg:SISO, BACK

## Exposure Conditions

Band	Band 53	TSL Permittivity	37.6
Frequency [MHz]   Channel Number	2489.200   60197	TSL Conductivity [S/m]	1.88
Group   UID	LTE-TDD   10488-AAG	Phantom Section   TSL	Flat   HSL
Conversion Factor	7.33	Test Distance [mm]	5.00

## Hardware Setup

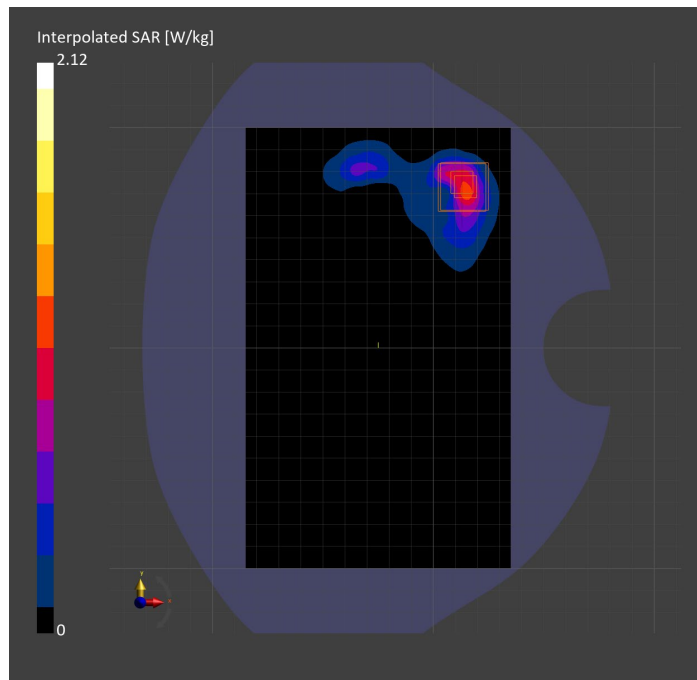
Probe   Calibration Date	EX3DV4 - SN3772   2023-02-13	Phantom	Twin-SAM V8.0 (30deg probe tilt)
DAE   Calibration Date	DAE4 Sn1359   2023-01-24	TSL Type	HBBL-600-10000
Software Version	16.2.4.2524		

## Scan Setup

	Area Scan	Zoom Scan
Grid Extents [mm]	120.0 x 200.0	30.0 x 30.0 x 30.0
Grid Steps [mm]	10.0 x 10.0	5.0 x 5.0 x 1.5
Sensor Surface [mm]	3.0	1.4
Graded Grid	N/A	Yes
M2/M1 [%]		78.6
Dist 3dB Peak [mm]		5.7

## Measurement Results

	Area Scan	Zoom Scan
psSAR1g [W/Kg]	0.834	<b>0.883</b>
psSAR10g [W/Kg]	0.361	<b>0.342</b>
Power Drift [dB]	N/A	-0.19



# Measurement Report for Band 53: LTE-TDD (SC-FDMA, 1 RB, 10 MHz, QPSK, UL Subframe=2,3,4,7,8,9) RBPosition:Mid AntennaCfg:SISO, EDGE LEFT

## Exposure Conditions

Band	Band 53	TSL Permittivity	37.6
Frequency [MHz]   Channel Number	2489.200   60197	TSL Conductivity [S/m]	1.88
Group   UID	LTE-TDD   10470-AAG	Phantom Section   TSL	Flat   HSL
Conversion Factor	7.33	Test Distance [mm]	5.00

## Hardware Setup

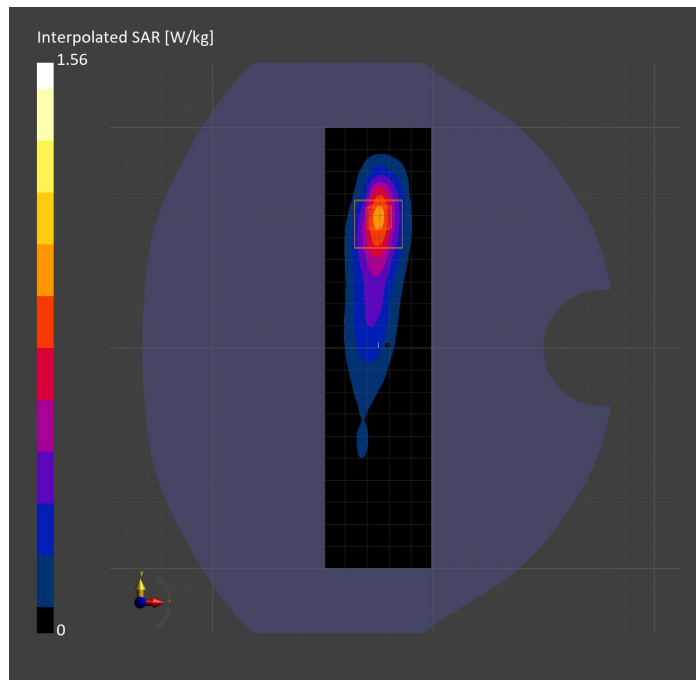
Probe   Calibration Date	EX3DV4 - SN3772   2023-02-13	Phantom	Twin-SAM V8.0 (30deg probe tilt)
DAE   Calibration Date	DAE4 Sn1359   2023-01-24	TSL Type	HBBL-600-10000
Software Version	16.2.4.2524		

## Scan Setup

	Area Scan	Zoom Scan
Grid Extents [mm]	48.0 x 200.0	30.0 x 30.0 x 30.0
Grid Steps [mm]	8.0 x 10.0	5.0 x 5.0 x 1.5
Sensor Surface [mm]	3.0	1.4
Graded Grid	N/A	Yes
M2/M1 [%]		79.3
Dist 3dB Peak [mm]		7.0

## Measurement Results

	Area Scan	Zoom Scan
psSAR1g [W/Kg]	0.717	<b>0.697</b>
psSAR10g [W/Kg]	0.317	<b>0.304</b>
Power Drift [dB]	N/A	-0.03





# Measurement Report for Band 66: LTE-FDD (SC-FDMA, 50% RB, 20 MHz, QPSK) RBPosition:Mid AntennaCfg:SISO, EDGE BOTTOM

## Exposure Conditions

Band	Band 66	TSL Permittivity	41.3
Frequency [MHz]   Channel Number	1745.000   132322	TSL Conductivity [S/m]	1.31
Group   UID	LTE-FDD   10297-AAE	Phantom Section   TSL	Flat   HSL
Conversion Factor	8.98	Test Distance [mm]	5.00

## Hardware Setup

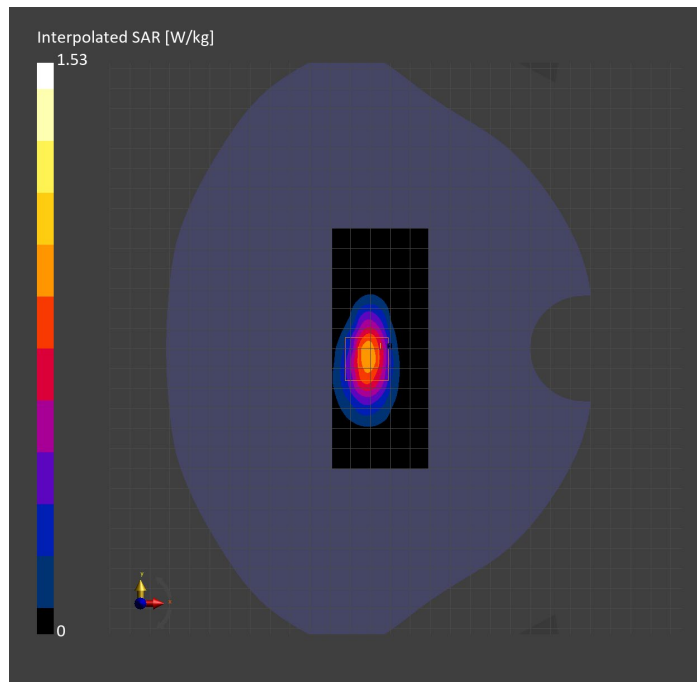
Probe   Calibration Date	EX3DV4 - SN3989   2023-01-26	Phantom	Twin-SAM V8.0 (30deg probe tilt)
DAE   Calibration Date	DAE4 Sn1257   2022-09-20	TSL Type	HBBL-600-10000
Software Version	16.2.4.2524		

## Scan Setup

	Area Scan	Zoom Scan
Grid Extents [mm]	48.0 x 120.0	30.0 x 30.0 x 30.0
Grid Steps [mm]	8.0 x 15.0	6.0 x 6.0 x 1.5
Sensor Surface [mm]	3.0	1.4
Graded Grid	N/A	Yes
M2/M1 [%]		81.5
Dist 3dB Peak [mm]		7.3

## Measurement Results

	Area Scan	Zoom Scan
psSAR1g [W/Kg]	0.795	<b>0.789</b>
psSAR10g [W/Kg]	0.396	<b>0.389</b>
Power Drift [dB]	N/A	0.01



# Measurement Report for Band 66: LTE-FDD (SC-FDMA, 1 RB, 20 MHz, QPSK) RBPosition:Mid AntennaCfg:SISO, BACK

## Exposure Conditions

Band	Band 66	TSL Permittivity	40.7
Frequency [MHz]   Channel Number	1770.000   132572	TSL Conductivity [S/m]	1.32
Group   UID	LTE-FDD   10169-CAF	Phantom Section   TSL	Flat   HSL
Conversion Factor	8.98	Test Distance [mm]	5.00

## Hardware Setup

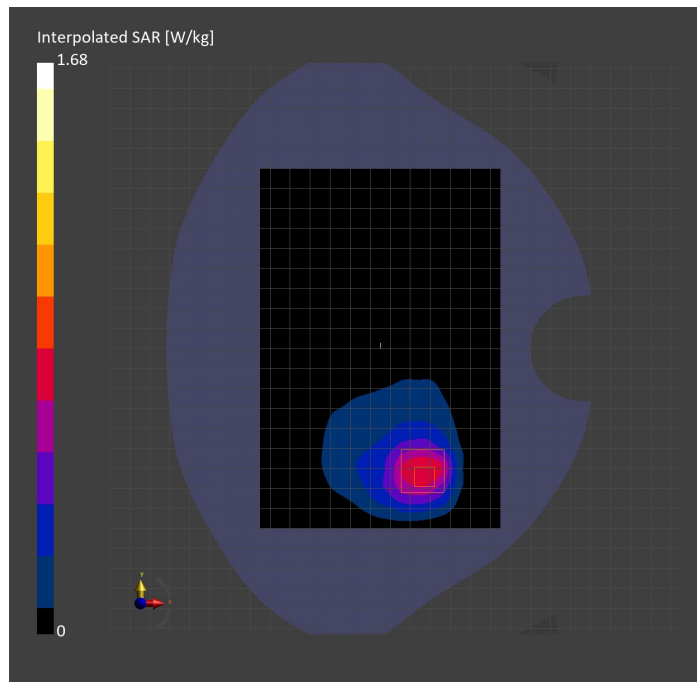
Probe   Calibration Date	EX3DV4 - SN3989   2023-01-26	Phantom	Twin-SAM V8.0 (30deg probe tilt)
DAE   Calibration Date	DAE4 Sn1257   2022-09-20	TSL Type	HBBL-600-10000
Software Version	16.2.4.2524		

## Scan Setup

	Area Scan	Zoom Scan
Grid Extents [mm]	120.0 x 180.0	30.0 x 30.0 x 30.0
Grid Steps [mm]	15.0 x 15.0	6.0 x 6.0 x 1.5
Sensor Surface [mm]	3.0	1.4
Graded Grid	N/A	Yes
M2/M1 [%]		81.5
Dist 3dB Peak [mm]		10.3

## Measurement Results

	Area Scan	Zoom Scan
psSAR1g [W/Kg]	0.690	<b>0.840</b>
psSAR10g [W/Kg]	0.394	<b>0.414</b>
Power Drift [dB]	N/A	-0.00



# Measurement Report for Band 66: LTE-FDD (SC-FDMA, 100% RB, 20 MHz, QPSK) AntennaCfg:SISO, CHEEK

## Exposure Conditions

Band	Band 66	TSL Permittivity	39.8
Frequency [MHz]   Channel Number	1745.000   132322	TSL Conductivity [S/m]	1.36
Group   UID	LTE-FDD   10100-CAF	Phantom Section   TSL	LeftHead   HSL
Conversion Factor	8.66	Test Distance [mm]	0.00

## Hardware Setup

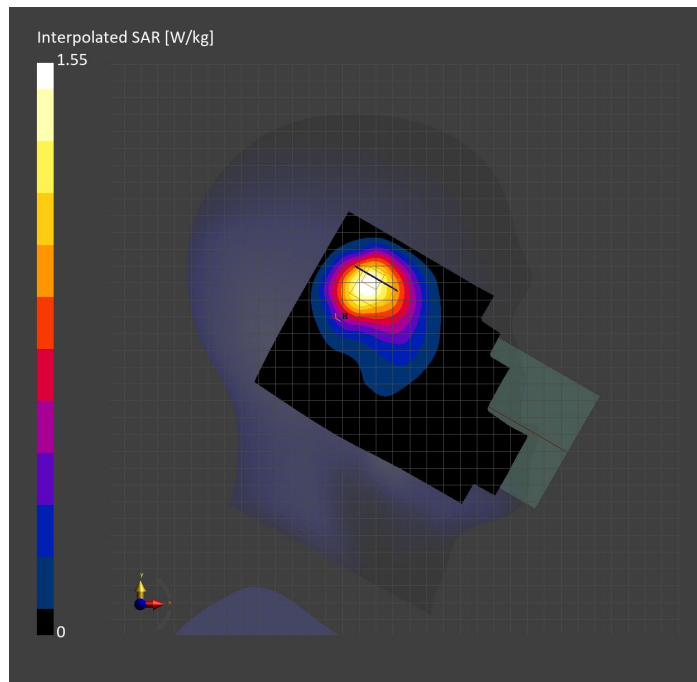
Probe   Calibration Date	EX3DV4 - SN7569   2023-04-18	Phantom	Twin-SAM V8.0 (30deg probe tilt)
DAE   Calibration Date	DAE4 Sn1547   2023-04-18	TSL Type	HBBL-600-10000
Software Version	16.2.4.2524		

## Scan Setup

	Area Scan	Zoom Scan
Grid Extents [mm]	120.0 x 210.0	30.0 x 30.0 x 30.0
Grid Steps [mm]	15.0 x 15.0	6.0 x 6.0 x 1.5
Sensor Surface [mm]	3.0	1.4
Graded Grid	N/A	Yes
M2/M1 [%]		74.9
Dist 3dB Peak [mm]		6.8

## Measurement Results

	Area Scan	Zoom Scan
psSAR1g [W/Kg]	0.746	<b>0.766</b>
psSAR10g [W/Kg]	0.432	<b>0.452</b>
Power Drift [dB]	N/A	-0.03



# Measurement Report for Band 71: LTE-FDD (SC-FDMA, 1 RB, 20 MHz, QPSK) RBPosition:Mid AntennaCfg:SISO, EDGE RIGHT

## Exposure Conditions

Band	Band 71	TSL Permittivity	43.7
Frequency [MHz]   Channel Number	680.500   133297	TSL Conductivity [S/m]	0.850
Group   UID	LTE-FDD   10169-CAF	Phantom Section   TSL	Flat   HSL
Conversion Factor	10.62	Test Distance [mm]	5.00

## Hardware Setup

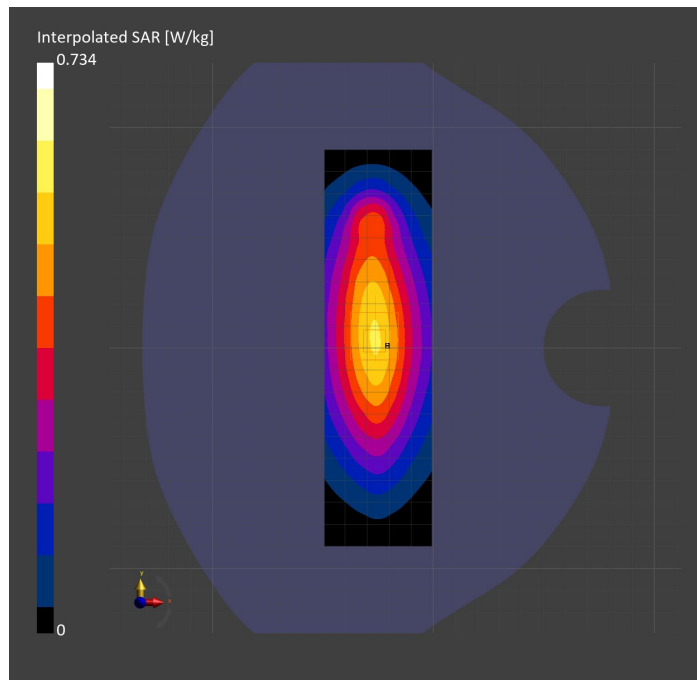
Probe   Calibration Date	EX3DV4 - SN7589   2023-04-18	Phantom	Twin-SAM V5.0 (30deg probe tilt)
DAE   Calibration Date	DAE4 Sn1544   2023-01-24	TSL Type	HBBL-600-10000
Software Version	16.2.4.2524		

## Scan Setup

	Area Scan	Zoom Scan
Grid Extents [mm]	48.6 x 180.0	30.0 x 30.0 x 30.0
Grid Steps [mm]	8.1 x 15.0	6.0 x 6.0 x 1.5
Sensor Surface [mm]	3.0	1.4
Graded Grid	N/A	Yes
M2/M1 [%]		87.0
Dist 3dB Peak [mm]		> 15.0

## Measurement Results

	Area Scan	Zoom Scan
psSAR1g [W/Kg]	0.488	<b>0.485</b>
psSAR10g [W/Kg]	0.329	<b>0.329</b>
Power Drift [dB]	N/A	0.04



# Measurement Report for Band 71: LTE-FDD (SC-FDMA, 1 RB, 20 MHz, QPSK) RBPosition:Mid AntennaCfg:SISO, CHEEK

## Exposure Conditions

Band	Band 71	TSL Permittivity	42.0
Frequency [MHz]   Channel Number	680.500   133297	TSL Conductivity [S/m]	0.872
Group   UID	LTE-FDD   10169-CAF	Phantom Section   TSL	RightHead   HSL
Conversion Factor	8.93	Test Distance [mm]	0.00

## Hardware Setup

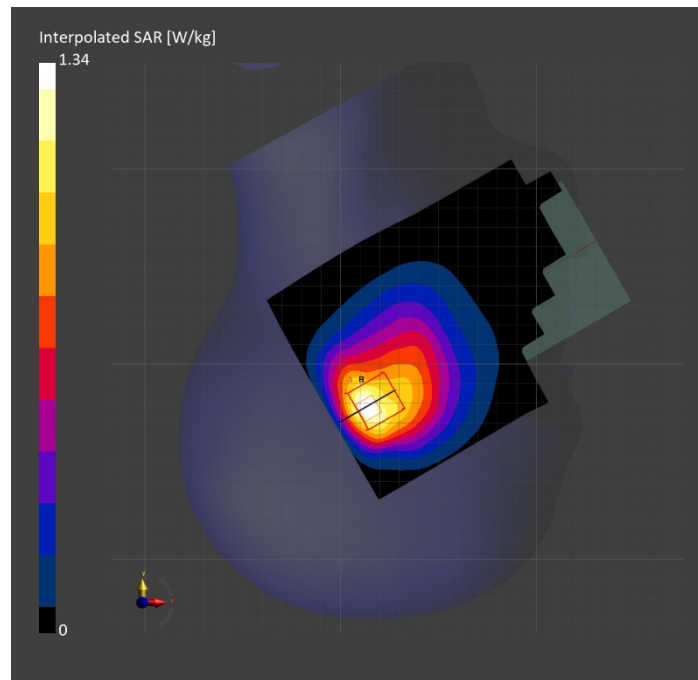
Probe   Calibration Date	EX3DV4 - SN7448   2023-02-14	Phantom	Twin-SAM V5.0 (30deg probe tilt)
DAE   Calibration Date	DAE4 Sn1472   2023-01-23	TSL Type	HBBL-600-10000
Software Version	16.2.4.2524		

## Scan Setup

	Area Scan	Zoom Scan
Grid Extents [mm]	120.0 x 180.0	30.0 x 30.0 x 30.0
Grid Steps [mm]	15.0 x 15.0	5.5 x 5.5 x 1.5
Sensor Surface [mm]	3.0	1.4
Graded Grid	N/A	Yes
M2/M1 [%]		73.3
Dist 3dB Peak [mm]		8.9

## Measurement Results

	Area Scan	Zoom Scan
psSAR1g [W/Kg]	0.610	<b>0.586</b>
psSAR10g [W/Kg]	0.393	<b>0.355</b>
Power Drift [dB]	N/A	-0.02



# Measurement Report for Band 71: LTE-FDD (SC-FDMA, 1 RB, 20 MHz, QPSK) RBPosition:Mid AntennaCfg:SISO, BACK

## Exposure Conditions

Band	Band 71	TSL Permittivity	42.0
Frequency [MHz]   Channel Number	680.500   133297	TSL Conductivity [S/m]	0.872
Group   UID	LTE-FDD   10169-CAF	Phantom Section   TSL	Flat   HSL
Conversion Factor	8.93	Test Distance [mm]	5.00

## Hardware Setup

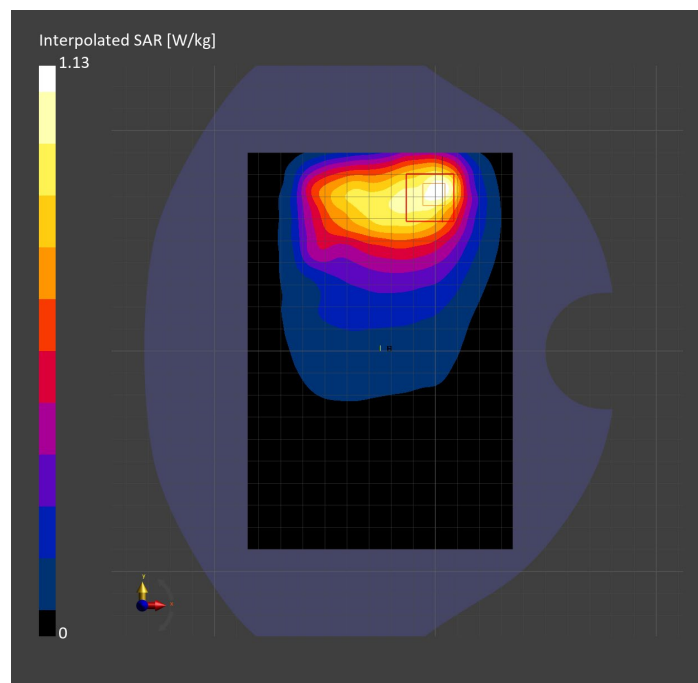
Probe   Calibration Date	EX3DV4 - SN7448   2023-02-14	Phantom	Twin-SAM V5.0 (30deg probe tilt)
DAE   Calibration Date	DAE4 Sn1472   2023-01-23	TSL Type	HBBL-600-10000
Software Version	16.2.4.2524		

## Scan Setup

	Area Scan	Zoom Scan
Grid Extents [mm]	120.0 x 180.0	30.0 x 30.0 x 30.0
Grid Steps [mm]	15.0 x 15.0	6.0 x 6.0 x 1.5
Sensor Surface [mm]	3.0	1.4
Graded Grid	N/A	Yes
M2/M1 [%]		73.0
Dist 3dB Peak [mm]		9.4

## Measurement Results

	Area Scan	Zoom Scan
psSAR1g [W/Kg]	0.539	<b>0.528</b>
psSAR10g [W/Kg]	0.356	<b>0.303</b>
Power Drift [dB]	N/A	-0.03



# Measurement Report for Band n5: 5G NR (DFT-s-OFDM, 1 RB, 20 MHz, QPSK, 15 kHz) RBPosition:Mid AntennaCfg:SISO, CHEEK

## Exposure Conditions

Band	Band n5	TSL Permittivity	41.1
Frequency [MHz]   Channel Number	836.500   167300	TSL Conductivity [S/m]	0.869
Group   UID	5G NR FR1 FDD   10931-AAC	Phantom Section   TSL	RightHead   HSL
Conversion Factor	7.83	Test Distance [mm]	0.00

## Hardware Setup

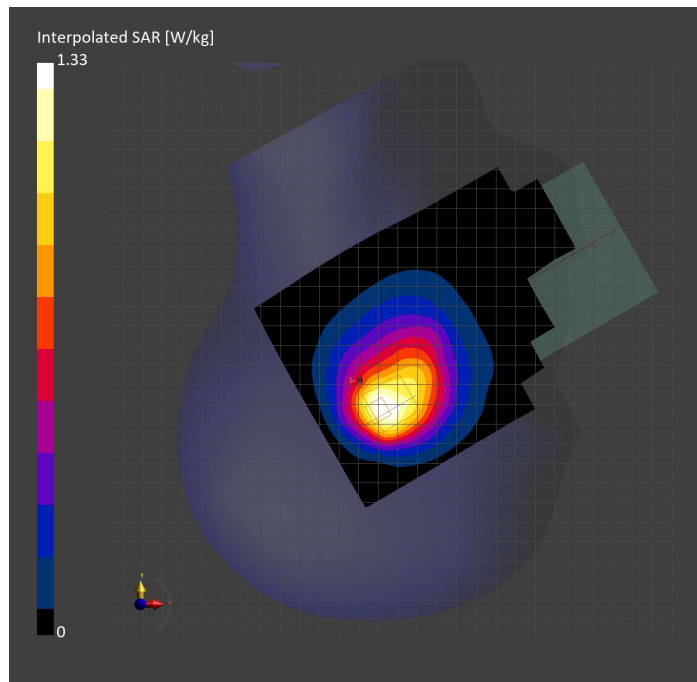
Probe   Calibration Date	EX3DV4 - SN3749   2023-01-27	Phantom	Twin-SAM V8.0 (30deg probe tilt)
DAE   Calibration Date	DAE4 Sn1357   2023-01-27	TSL Type	HBBL-600-10000
Software Version	16.2.4.2524		

## Scan Setup

	Area Scan	Zoom Scan
Grid Extents [mm]	120.0 x 210.0	30.0 x 30.0 x 30.0
Grid Steps [mm]	15.0 x 15.0	6.0 x 6.0 x 1.5
Sensor Surface [mm]	3.0	1.4
Graded Grid	N/A	Yes
M2/M1 [%]		82.8
Dist 3dB Peak [mm]		12.4

## Measurement Results

	Area Scan	Zoom Scan
psSAR1g [W/Kg]	0.765	<b>0.768</b>
psSAR10g [W/Kg]	0.496	<b>0.510</b>
Power Drift [dB]	N/A	-0.02



# Measurement Report for Band n5: 5G NR (DFT-s-OFDM, 1 RB, 20 MHz, QPSK, 15 kHz) RBPosition:Mid AntennaCfg:SISO, BACK

## Exposure Conditions

Band	Band n5	TSL Permittivity	43.3
Frequency [MHz]   Channel Number	836.500   167300	TSL Conductivity [S/m]	0.874
Group   UID	5G NR FR1 FDD   10931-AAC	Phantom Section   TSL	Flat   HSL
Conversion Factor	8.76	Test Distance [mm]	5.00

## Hardware Setup

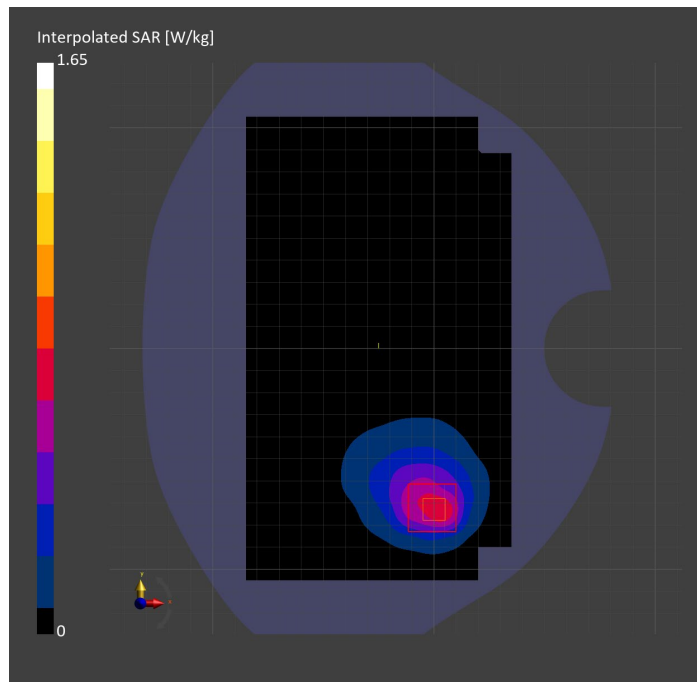
Probe   Calibration Date	EX3DV4 - SN7806   2023-04-04	Phantom	Twin-SAM V8.0 (30deg probe tilt)
DAE   Calibration Date	DAE4 Sn1784   2023-04-03	TSL Type	HBBL-600-10000
Software Version	16.2.4.2524		

## Scan Setup

	Area Scan	Zoom Scan
Grid Extents [mm]	120.0 x 210.0	30.0 x 30.0 x 30.0
Grid Steps [mm]	15.0 x 15.0	6.0 x 6.0 x 1.5
Sensor Surface [mm]	3.0	1.4
Graded Grid	N/A	Yes
M2/M1 [%]		67.7
Dist 3dB Peak [mm]		9.2

## Measurement Results

	Area Scan	Zoom Scan
psSAR1g [W/Kg]	0.678	<b>0.656</b>
psSAR10g [W/Kg]	0.412	<b>0.350</b>
Power Drift [dB]	N/A	-0.01





# Measurement Report for Band n5: 5G NR (DFT-s-OFDM, 50% RB, 20 MHz, QPSK, 15 kHz) RBPosition:Mid AntennaCfg:SISO, EDGE BOTTOM

## Exposure Conditions

Band	Band n5	TSL Permittivity	43.3
Frequency [MHz]   Channel Number	836.500   167300	TSL Conductivity [S/m]	0.874
Group   UID	5G NR FR1 FDD   10939-AAC	Phantom Section   TSL	Flat   HSL
Conversion Factor	8.76	Test Distance [mm]	5.00

## Hardware Setup

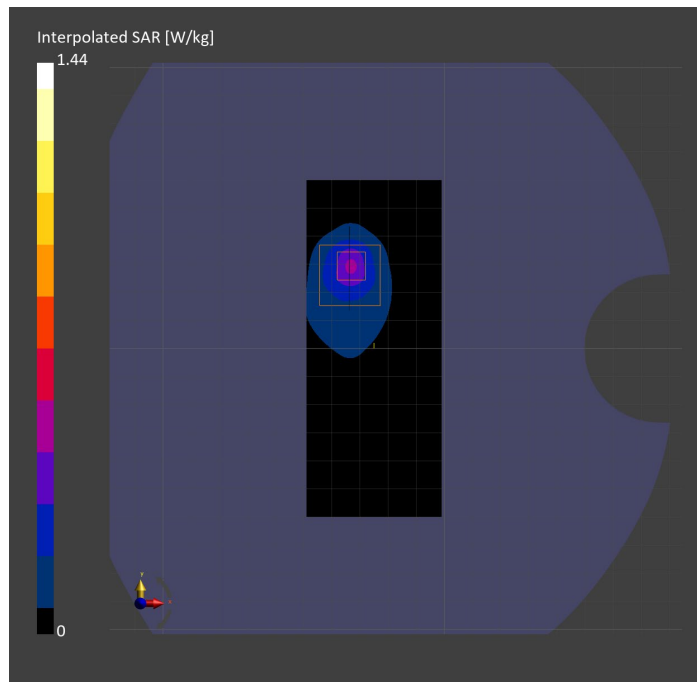
Probe   Calibration Date	EX3DV4 - SN7806   2023-04-04	Phantom	Twin-SAM V8.0 (30deg probe tilt)
DAE   Calibration Date	DAE4 Sn1784   2023-04-03	TSL Type	HBBL-600-10000
Software Version	16.2.4.2524		

## Scan Setup

	Area Scan	Zoom Scan
Grid Extents [mm]	48.0 x 120.0	30.0 x 30.0 x 30.0
Grid Steps [mm]	8.0 x 15.0	6.0 x 6.0 x 1.5
Sensor Surface [mm]	3.0	1.4
Graded Grid	N/A	Yes
M2/M1 [%]		56.4
Dist 3dB Peak [mm]		7.2

## Measurement Results

	Area Scan	Zoom Scan
psSAR1g [W/Kg]	0.370	<b>0.392</b>
psSAR10g [W/Kg]	0.187	<b>0.157</b>
Power Drift [dB]	N/A	-0.00



# Measurement Report for Band n7: 5G NR (DFT-s-OFDM, 1 RB, 40 MHz, QPSK, 15 kHz) RBPosition:Mid AntennaCfg:SISO, CHEEK

## Exposure Conditions

Band	Band n7	TSL Permittivity	38.7
Frequency [MHz]   Channel Number	2535.000   507000	TSL Conductivity [S/m]	1.95
Group   UID	5G NR FR1 FDD   10934-AAC	Phantom Section   TSL	RightHead   HSL
Conversion Factor	7.32	Test Distance [mm]	0.00

## Hardware Setup

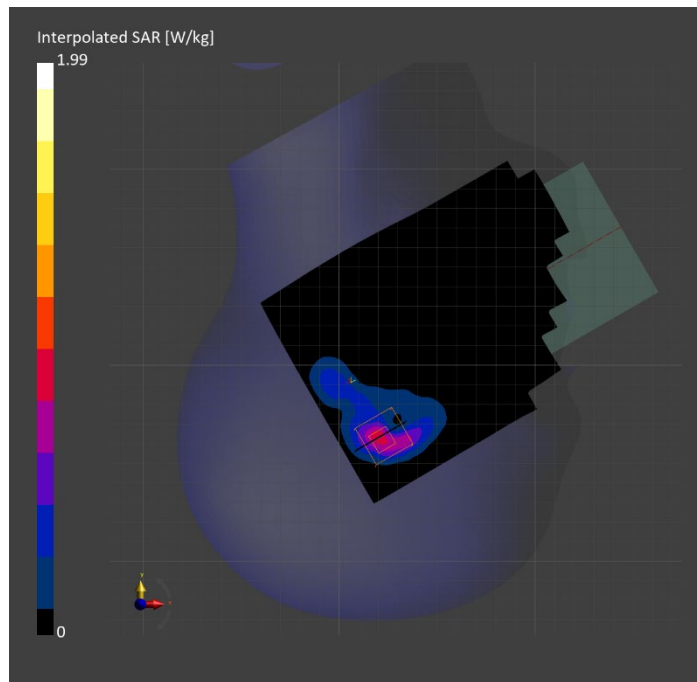
Probe   Calibration Date	EX3DV4 - SN3885   2022-09-20	Phantom	Twin-SAM V5.0 (30deg probe tilt)
DAE   Calibration Date	DAE4 Sn1548   2023-02-14	TSL Type	HBBL-600-10000
Software Version	16.2.4.2524		

## Scan Setup

	Area Scan	Zoom Scan
Grid Extents [mm]	120.0 x 200.0	30.0 x 30.0 x 30.0
Grid Steps [mm]	10.0 x 10.0	5.0 x 5.0 x 1.5
Sensor Surface [mm]	3.0	1.4
Graded Grid	N/A	Yes
M2/M1 [%]		72.1
Dist 3dB Peak [mm]		5.1

## Measurement Results

	Area Scan	Zoom Scan
psSAR1g [W/Kg]	0.657	<b>0.745</b>
psSAR10g [W/Kg]	0.284	<b>0.292</b>
Power Drift [dB]	N/A	0.06



# Measurement Report for Band n7: 5G NR (DFT-s-OFDM, 1 RB, 40 MHz, QPSK, 15 kHz) RBPosition:Mid AntennaCfg:SISO, BACK

## Exposure Conditions

Band	Band n7	TSL Permittivity	40.3
Frequency [MHz]   Channel Number	2535.000   507000	TSL Conductivity [S/m]	1.85
Group   UID	5G NR FR1 FDD   10934-AAC	Phantom Section   TSL	Flat   HSL
Conversion Factor	7.33	Test Distance [mm]	5.00

## Hardware Setup

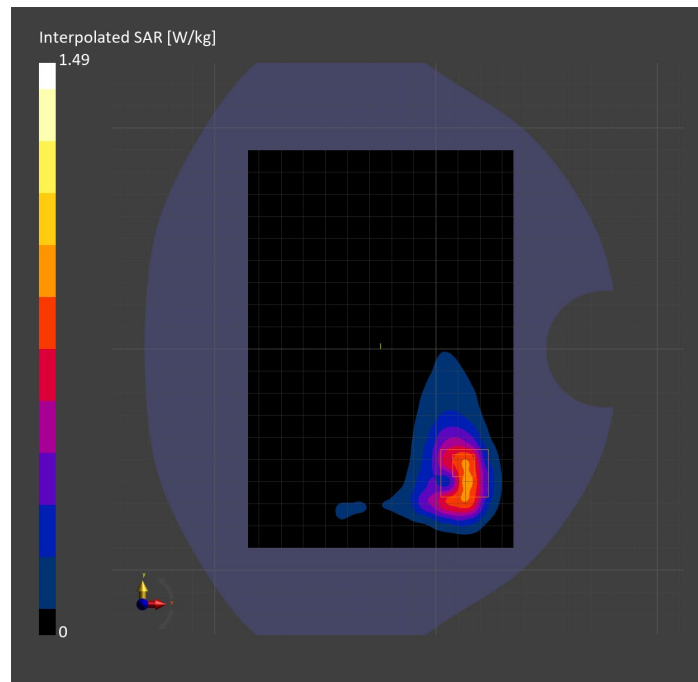
Probe   Calibration Date	EX3DV4 - SN7808   2023-04-18	Phantom	Twin-SAM V8.0 (30deg probe tilt)
DAE   Calibration Date	DAE4 Sn1796   2023-04-03	TSL Type	HBBL-600-10000
Software Version	16.2.4.2524		

## Scan Setup

	Area Scan	Zoom Scan
Grid Extents [mm]	120.0 x 180.0	30.0 x 30.0 x 30.0
Grid Steps [mm]	10.0 x 10.0	5.0 x 5.0 x 1.5
Sensor Surface [mm]	3.0	1.4
Graded Grid	N/A	Yes
M2/M1 [%]		79.9
Dist 3dB Peak [mm]		6.5

## Measurement Results

	Area Scan	Zoom Scan
psSAR1g [W/Kg]	0.686	<b>0.703</b>
psSAR10g [W/Kg]	0.341	<b>0.321</b>
Power Drift [dB]	N/A	0.00



# Measurement Report for Band n7: 5G NR (DFT-s-OFDM, 1 RB, 40 MHz, QPSK, 15 kHz) RBPosition:Mid AntennaCfg:SISO, EDGE LEFT

## Exposure Conditions

Band	Band n7	TSL Permittivity	40.3
Frequency [MHz]   Channel Number	2535.000   507000	TSL Conductivity [S/m]	1.85
Group   UID	5G NR FR1 FDD   10934-AAC	Phantom Section   TSL	Flat   HSL
Conversion Factor	7.33	Test Distance [mm]	5.00

## Hardware Setup

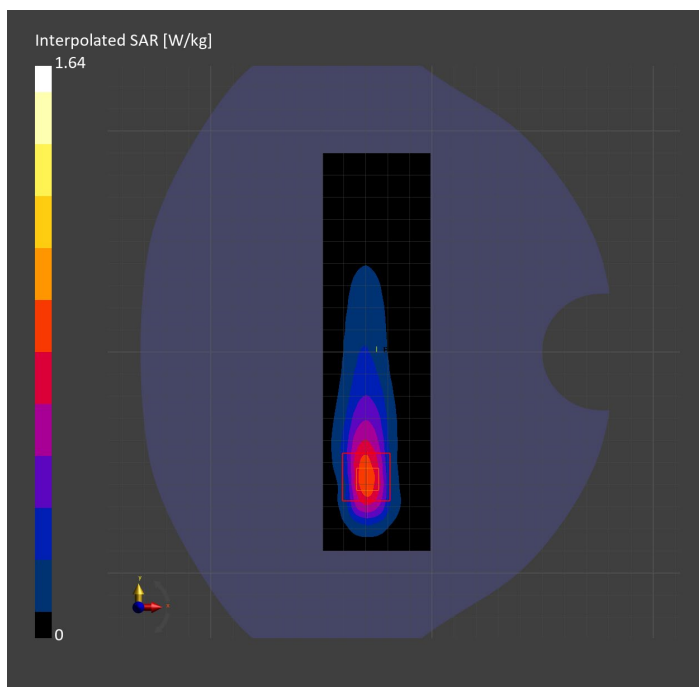
Probe   Calibration Date	EX3DV4 - SN7808   2023-04-18	Phantom	Twin-SAM V8.0 (30deg probe tilt)
DAE   Calibration Date	DAE4 Sn1796   2023-04-03	TSL Type	HBBL-600-10000
Software Version	16.2.4.2524		

## Scan Setup

	Area Scan	Zoom Scan
Grid Extents [mm]	48.6 x 180.0	30.0 x 30.0 x 30.0
Grid Steps [mm]	8.1 x 10.0	5.0 x 5.0 x 1.5
Sensor Surface [mm]	3.0	1.4
Graded Grid	N/A	Yes
M2/M1 [%]		78.0
Dist 3dB Peak [mm]		7.0

## Measurement Results

	Area Scan	Zoom Scan
psSAR1g [W/Kg]	0.704	<b>0.742</b>
psSAR10g [W/Kg]	0.319	<b>0.327</b>
Power Drift [dB]	N/A	0.03



# Measurement Report for Band n12: 5G NR (DFT-s-OFDM, 1 RB, 15 MHz, QPSK, 15 kHz) RBPosition:Mid AntennaCfg:SISO, EDGE RIGHT

## Exposure Conditions

Band	Band n12	TSL Permittivity	43.0
Frequency [MHz]   Channel Number	707.500   141500	TSL Conductivity [S/m]	0.862
Group   UID	5G NR FR1 FDD   10930-AAC	Phantom Section   TSL	Flat   HSL
Conversion Factor	10.62	Test Distance [mm]	5.00

## Hardware Setup

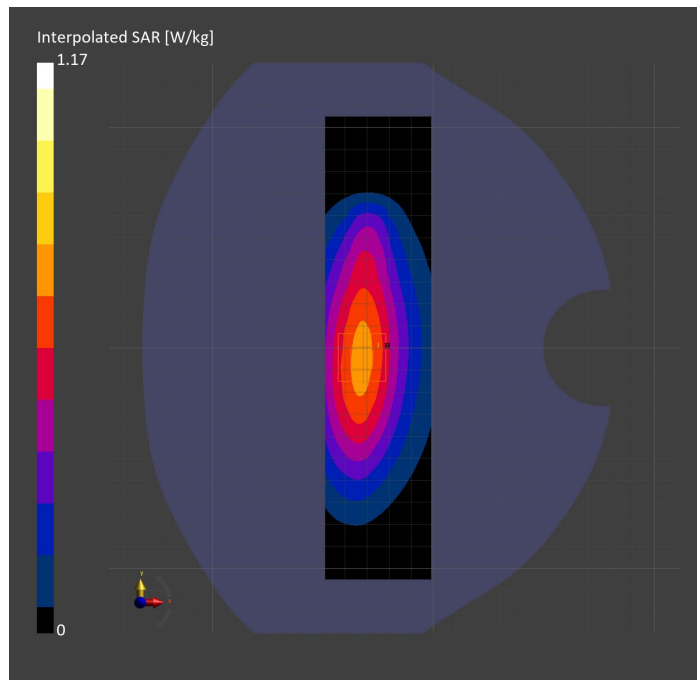
Probe   Calibration Date	EX3DV4 - SN7589   2023-04-18	Phantom	Twin-SAM V5.0 (30deg probe tilt)
DAE   Calibration Date	DAE4 Sn1544   2023-01-24	TSL Type	HBBL-600-10000
Software Version	16.2.4.2524		

## Scan Setup

	Area Scan	Zoom Scan
Grid Extents [mm]	48.0 x 210.0	30.0 x 30.0 x 30.0
Grid Steps [mm]	8.0 x 15.0	6.0 x 6.0 x 1.5
Sensor Surface [mm]	3.0	1.4
Graded Grid	N/A	Yes
M2/M1 [%]		82.8
Dist 3dB Peak [mm]		21.3

## Measurement Results

	Area Scan	Zoom Scan
psSAR1g [W/Kg]	0.640	<b>0.700</b>
psSAR10g [W/Kg]	0.428	<b>0.454</b>
Power Drift [dB]	N/A	-0.09



# Measurement Report for Band n12: 5G NR (DFT-s-OFDM, 1 RB, 15 MHz, QPSK, 15 kHz) RBPosition:Mid AntennaCfg:SISO, CHEEK

## Exposure Conditions

Band	Band n12	TSL Permittivity	43.7
Frequency [MHz]   Channel Number	707.500   141500	TSL Conductivity [S/m]	0.859
Group   UID	5G NR FR1 FDD   10930-AAC	Phantom Section   TSL	RightHead   HSL
Conversion Factor	8.93	Test Distance [mm]	0.00

## Hardware Setup

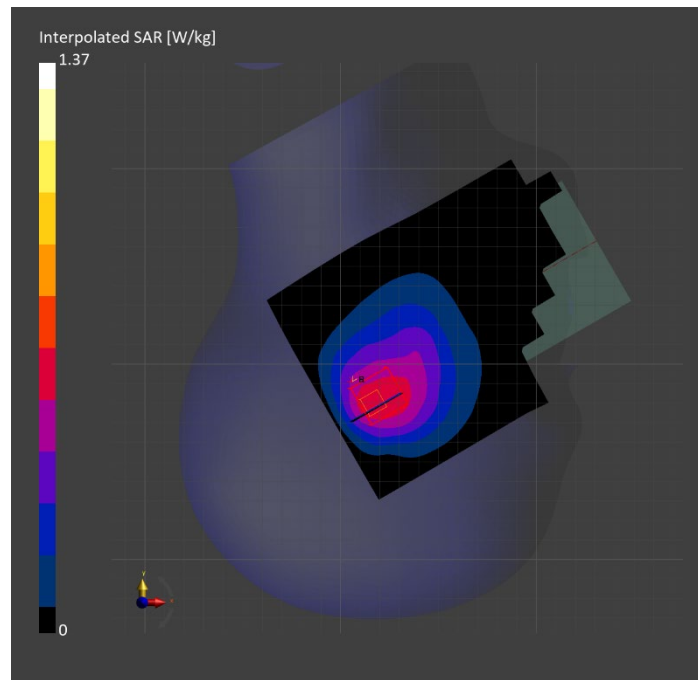
Probe   Calibration Date	EX3DV4 - SN7448   2023-02-14	Phantom	Twin-SAM V5.0 (30deg probe tilt)
DAE   Calibration Date	DAE4 Sn1472   2023-01-23	TSL Type	HBBL-600-10000
Software Version	16.2.4.2524		

## Scan Setup

	Area Scan	Zoom Scan
Grid Extents [mm]	120.0 x 180.0	30.0 x 30.0 x 30.0
Grid Steps [mm]	15.0 x 15.0	6.0 x 6.0 x 1.5
Sensor Surface [mm]	3.0	1.4
Graded Grid	N/A	Yes
M2/M1 [%]		73.5
Dist 3dB Peak [mm]		7.3

## Measurement Results

	Area Scan	Zoom Scan
psSAR1g [W/Kg]	0.580	<b>0.644</b>
psSAR10g [W/Kg]	0.398	<b>0.394</b>
Power Drift [dB]	N/A	-0.01



# Measurement Report for Band n12: 5G NR (DFT-s-OFDM, 1 RB, 15 MHz, QPSK, 15 kHz) RBPosition:Mid AntennaCfg:SISO, BACK

## Exposure Conditions

Band	Band n12	TSL Permittivity	43.7
Frequency [MHz]   Channel Number	707.500   141500	TSL Conductivity [S/m]	0.859
Group   UID	5G NR FR1 FDD   10930-AAC	Phantom Section   TSL	Flat   HSL
Conversion Factor	8.93	Test Distance [mm]	5.00

## Hardware Setup

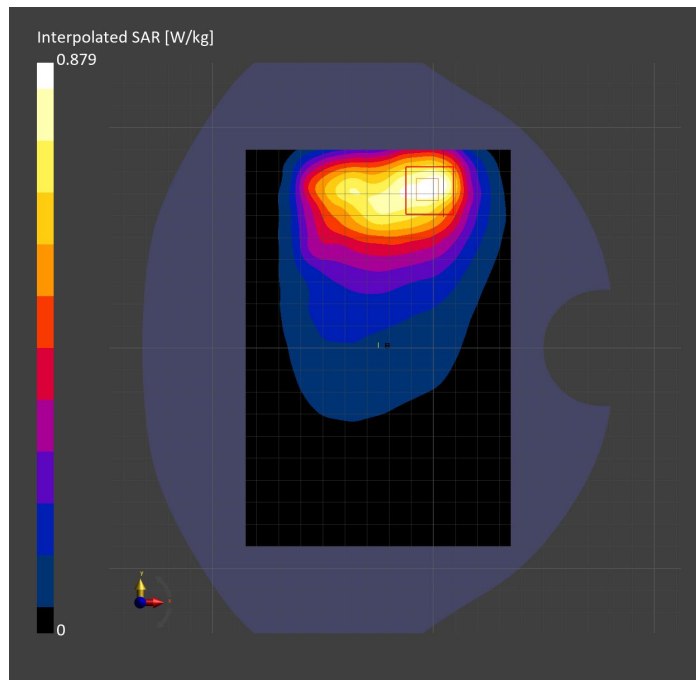
Probe   Calibration Date	EX3DV4 - SN7448   2023-02-14	Phantom	Twin-SAM V5.0 (30deg probe tilt)
DAE   Calibration Date	DAE4 Sn1472   2023-01-23	TSL Type	HBBL-600-10000
Software Version	16.2.4.2524		

## Scan Setup

	Area Scan	Zoom Scan
Grid Extents [mm]	120.0 x 180.0	30.0 x 30.0 x 30.0
Grid Steps [mm]	15.0 x 15.0	6.0 x 6.0 x 1.5
Sensor Surface [mm]	3.0	1.4
Graded Grid	N/A	Yes
M2/M1 [%]		82.3
Dist 3dB Peak [mm]		13.0

## Measurement Results

	Area Scan	Zoom Scan
psSAR1g [W/Kg]	0.480	<b>0.462</b>
psSAR10g [W/Kg]	0.320	<b>0.270</b>
Power Drift [dB]	N/A	0.02



# Measurement Report for Band n14: 5G NR (DFT-s-OFDM, 1 RB, 10 MHz, QPSK, 15 kHz) RBPosition:Mid AntennaCfg:SISO, EDGE RIGHT

## Exposure Conditions

Band	Band n14	TSL Permittivity	42.8
Frequency [MHz]   Channel Number	793.000   158600	TSL Conductivity [S/m]	0.891
Group   UID	5G NR FR1 FDD   10929-AAD	Phantom Section   TSL	Flat   HSL
Conversion Factor	10.62	Test Distance [mm]	5.00

## Hardware Setup

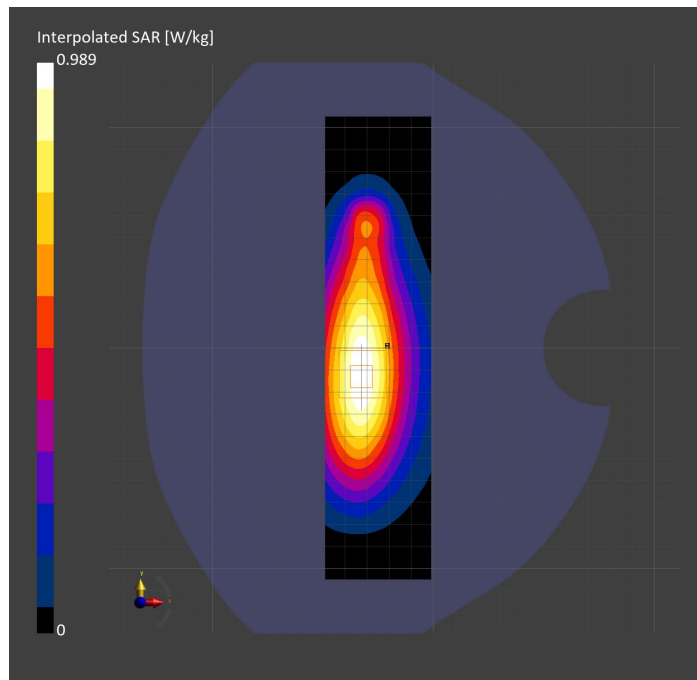
Probe   Calibration Date	EX3DV4 - SN7589   2023-04-18	Phantom	Twin-SAM V5.0 (30deg probe tilt)
DAE   Calibration Date	DAE4 Sn1544   2023-01-24	TSL Type	HBBL-600-10000
Software Version	16.2.4.2524		

## Scan Setup

	Area Scan	Zoom Scan
Grid Extents [mm]	48.0 x 210.0	30.0 x 30.0 x 30.0
Grid Steps [mm]	8.0 x 15.0	6.0 x 6.0 x 1.5
Sensor Surface [mm]	3.0	1.4
Graded Grid	N/A	Yes
M2/M1 [%]		83.0
Dist 3dB Peak [mm]		15.6

## Measurement Results

	Area Scan	Zoom Scan
psSAR1g [W/Kg]	0.552	<b>0.590</b>
psSAR10g [W/Kg]	0.365	<b>0.379</b>
Power Drift [dB]	N/A	-0.09





# Measurement Report for Band n14: 5G NR (DFT-s-OFDM, 1 RB, 10 MHz, QPSK, 15 kHz) RBPosition:Mid AntennaCfg:SISO, CHEEK

## Exposure Conditions

<b>Band</b>	Band n14	<b>TSL Permittivity</b>	41.3
<b>Frequency [MHz]   Channel Number</b>	793.000   158600	<b>TSL Conductivity [S/m]</b>	0.910
<b>Group   UID</b>	5G NR FR1 FDD   10929-AAD	<b>Phantom Section   TSL</b>	RightHead   HSL
<b>Conversion Factor</b>	8.93	<b>Test Distance [mm]</b>	0.00

## Hardware Setup

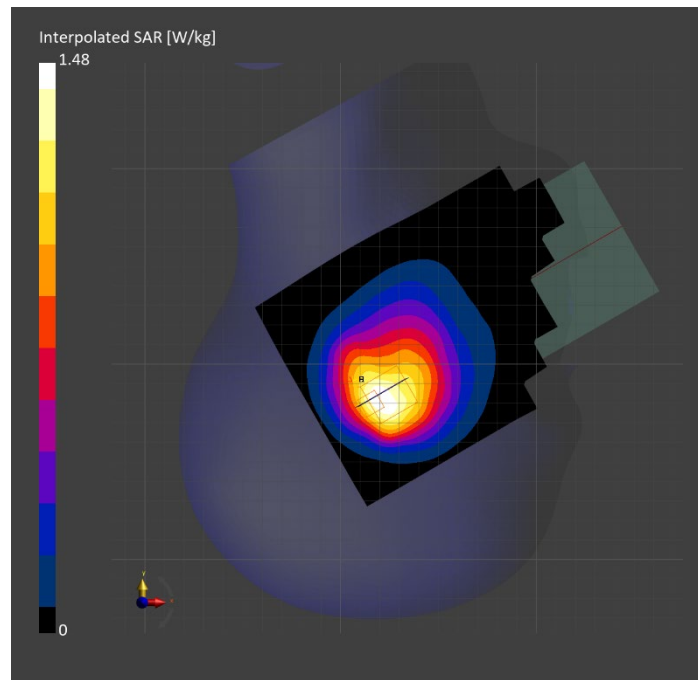
<b>Probe   Calibration Date</b>	EX3DV4 - SN7448   2023-02-14	<b>Phantom</b>	Twin-SAM V5.0 (30deg probe tilt)
<b>DAE   Calibration Date</b>	DAE4 Sn1472   2023-01-23	<b>TSL Type</b>	HBBL-600-10000
<b>Software Version</b>	16.2.4.2524		

## Scan Setup

	Area Scan	Zoom Scan
<b>Grid Extents [mm]</b>	120.0 x 210.0	30.0 x 30.0 x 30.0
<b>Grid Steps [mm]</b>	15.0 x 15.0	6.0 x 6.0 x 1.5
<b>Sensor Surface [mm]</b>	3.0	1.4
<b>Graded Grid</b>	N/A	Yes
<b>M2/M1 [%]</b>		76.4
<b>Dist 3dB Peak [mm]</b>		13.4

## Measurement Results

	Area Scan	Zoom Scan
<b>psSAR1g [W/Kg]</b>	0.725	<b>0.713</b>
<b>psSAR10g [W/Kg]</b>	0.477	<b>0.455</b>
<b>Power Drift [dB]</b>	N/A	-0.08



# Measurement Report for Band n14: 5G NR (DFT-s-OFDM, 50% RB, 10 MHz, QPSK, 15 kHz) RBPosition:Mid AntennaCfg:SISO, BACK

## Exposure Conditions

Band	Band n14	TSL Permittivity	40.8
Frequency [MHz]   Channel Number	793.000   158600	TSL Conductivity [S/m]	0.891
Group   UID	5G NR FR1 FDD   10937-AAD	Phantom Section   TSL	Flat   HSL
Conversion Factor	8.93	Test Distance [mm]	5.00

## Hardware Setup

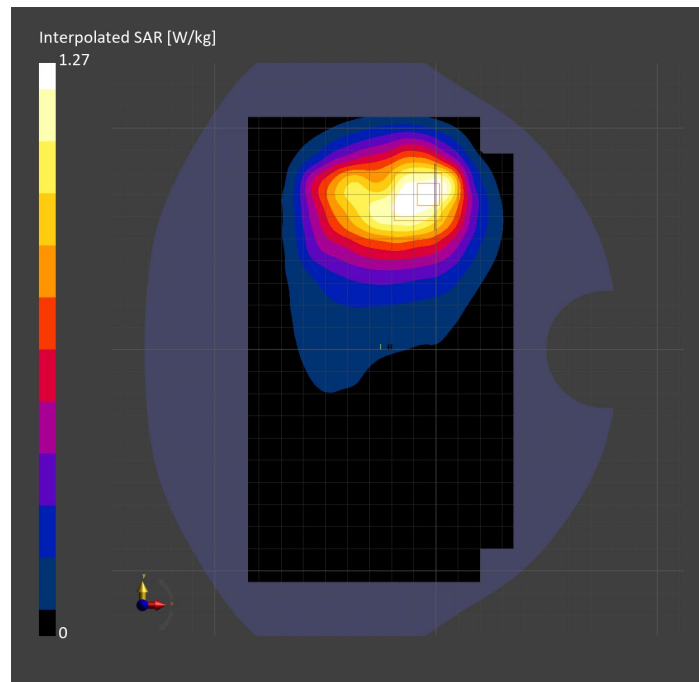
Probe   Calibration Date	EX3DV4 - SN7448   2023-02-14	Phantom	Twin-SAM V5.0 (30deg probe tilt)
DAE   Calibration Date	DAE4 Sn1472   2023-01-23	TSL Type	HBBL-600-10000
Software Version	16.2.4.2524		

## Scan Setup

	Area Scan	Zoom Scan
Grid Extents [mm]	120.0 x 210.0	30.0 x 30.0 x 30.0
Grid Steps [mm]	15.0 x 15.0	6.0 x 6.0 x 1.5
Sensor Surface [mm]	3.0	1.4
Graded Grid	N/A	Yes
M2/M1 [%]		84.1
Dist 3dB Peak [mm]		14.5

## Measurement Results

	Area Scan	Zoom Scan
psSAR1g [W/Kg]	0.691	<b>0.703</b>
psSAR10g [W/Kg]	0.464	<b>0.420</b>
Power Drift [dB]	N/A	0.01



# Measurement Report for Band n25: 5G NR (DFT-s-OFDM, 1 RB, 40 MHz, QPSK, 15 kHz) RBPosition:Mid AntennaCfg:SISO, CHEEK

## Exposure Conditions

Band	Band n25	TSL Permittivity	38.1
Frequency [MHz]   Channel Number	1882.500   376500	TSL Conductivity [S/m]	1.41
Group   UID	5G NR FR1 FDD   10934-AAC	Phantom Section   TSL	LeftHead   HSL
Conversion Factor	7.53	Test Distance [mm]	0.00

## Hardware Setup

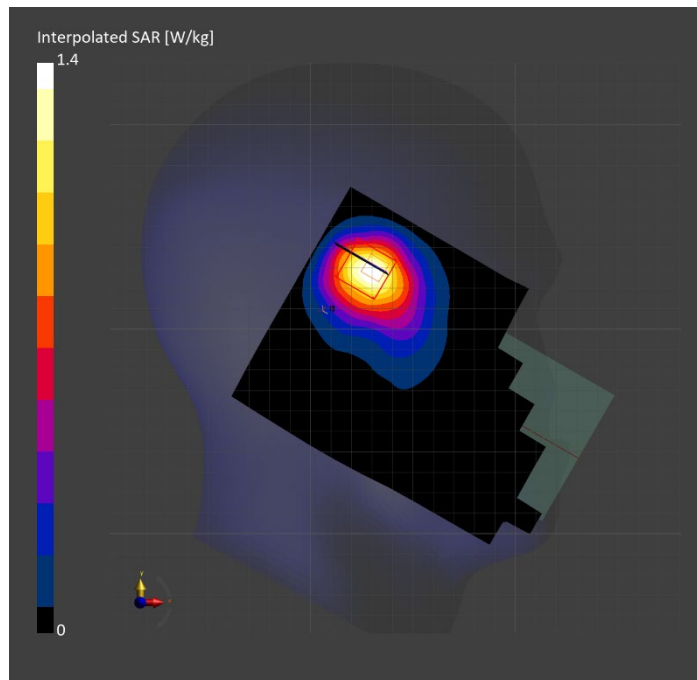
Probe   Calibration Date	EX3DV4 - SN7807   2023-04-11	Phantom	Twin-SAM V8.0 (30deg probe tilt)
DAE   Calibration Date	DAE4 Sn1799   2023-04-04	TSL Type	HBBL-600-10000
Software Version	16.2.4.2524		

## Scan Setup

	Area Scan	Zoom Scan
Grid Extents [mm]	120.0 x 180.0	30.0 x 30.0 x 30.0
Grid Steps [mm]	15.0 x 15.0	6.0 x 6.0 x 1.5
Sensor Surface [mm]	3.0	1.4
Graded Grid	N/A	Yes
M2/M1 [%]		83.2
Dist 3dB Peak [mm]		10.4

## Measurement Results

	Area Scan	Zoom Scan
psSAR1g [W/Kg]	0.712	<b>0.728</b>
psSAR10g [W/Kg]	0.398	<b>0.379</b>
Power Drift [dB]	N/A	-0.01



# Measurement Report for Band n25: 5G NR (DFT-s-OFDM, 1 RB, 40 MHz, QPSK, 15 kHz) RBPosition:Mid AntennaCfg:SISO, BACK

## Exposure Conditions

Band	Band n25	TSL Permittivity	38.2
Frequency [MHz]   Channel Number	1882.500   376500	TSL Conductivity [S/m]	1.39
Group   UID	5G NR FR1 FDD   10934-AAC	Phantom Section   TSL	Flat   HSL
Conversion Factor	7.53	Test Distance [mm]	5.00

## Hardware Setup

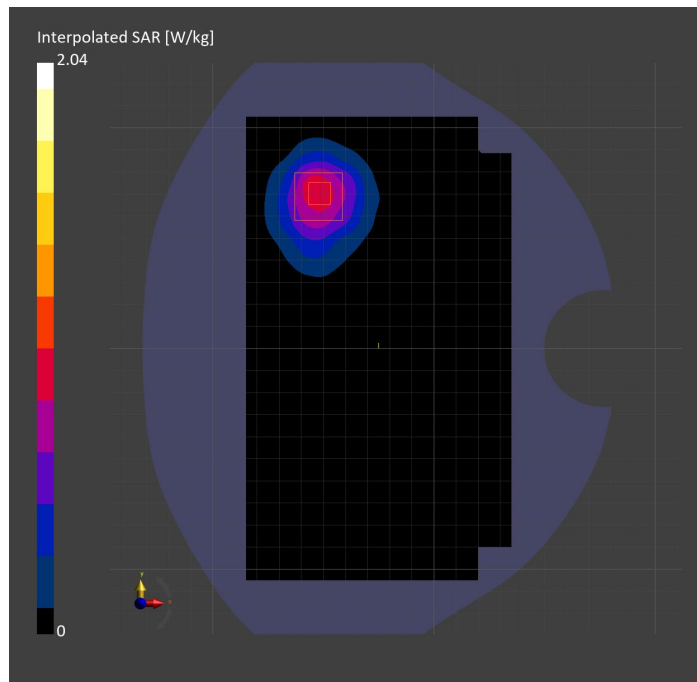
Probe   Calibration Date	EX3DV4 - SN7807   2023-04-11	Phantom	Twin-SAM V8.0 (30deg probe tilt)
DAE   Calibration Date	DAE4 Sn1799   2023-04-04	TSL Type	HBBL-600-10000
Software Version	16.2.4.2524		

## Scan Setup

	Area Scan	Zoom Scan
Grid Extents [mm]	120.0 x 210.0	30.0 x 30.0 x 30.0
Grid Steps [mm]	15.0 x 15.0	6.0 x 6.0 x 1.5
Sensor Surface [mm]	3.0	1.4
Graded Grid	N/A	Yes
M2/M1 [%]		70.8
Dist 3dB Peak [mm]		10.8

## Measurement Results

	Area Scan	Zoom Scan
psSAR1g [W/Kg]	0.824	<b>0.875</b>
psSAR10g [W/Kg]	0.458	<b>0.460</b>
Power Drift [dB]	N/A	0.00



# Measurement Report for Band n25: 5G NR (DFT-s-OFDM, 50% RB, 40 MHz, QPSK, 15 kHz) RBPosition:Mid AntennaCfg:SISO, EDGE RIGHT

## Exposure Conditions

Band	Band n25	TSL Permittivity	38.1
Frequency [MHz]   Channel Number	1882.500   376500	TSL Conductivity [S/m]	1.41
Group   UID	5G NR FR1 FDD   10942-AAC	Phantom Section   TSL	Flat   HSL
Conversion Factor	7.53	Test Distance [mm]	5.00

## Hardware Setup

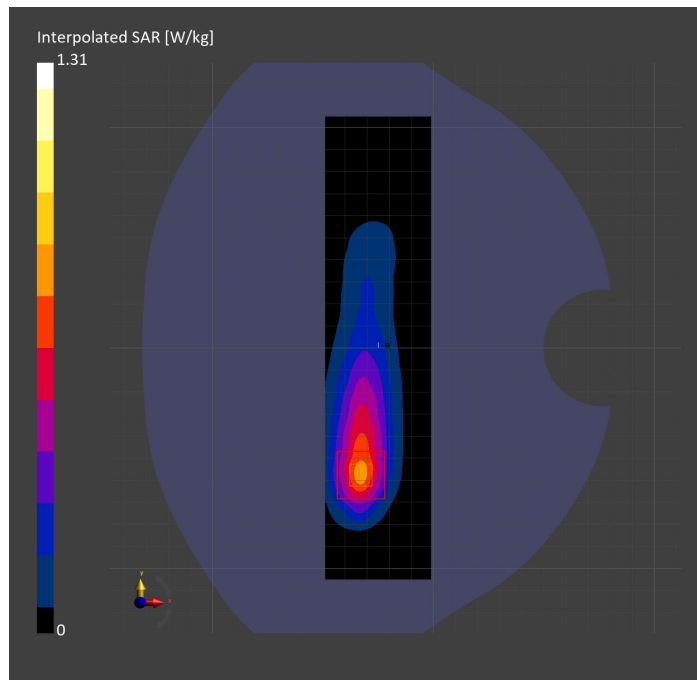
Probe   Calibration Date	EX3DV4 - SN7807   2023-04-11	Phantom	Twin-SAM V8.0 (30deg probe tilt)
DAE   Calibration Date	DAE4 Sn1799   2023-04-04	TSL Type	HBBL-600-10000
Software Version	16.2.4.2524		

## Scan Setup

	Area Scan	Zoom Scan
Grid Extents [mm]	48.0 x 210.0	30.0 x 30.0 x 30.0
Grid Steps [mm]	8.0 x 15.0	6.0 x 6.0 x 1.5
Sensor Surface [mm]	3.0	1.4
Graded Grid	N/A	Yes
M2/M1 [%]		77.6
Dist 3dB Peak [mm]		8.5

## Measurement Results

	Area Scan	Zoom Scan
psSAR1g [W/Kg]	0.644	<b>0.636</b>
psSAR10g [W/Kg]	0.333	<b>0.317</b>
Power Drift [dB]	N/A	-0.01



# Measurement Report for Band n26: 5G NR (DFT-s-OFDM, 50% RB, 20 MHz, QPSK, 15 kHz) RBPosition:Mid AntennaCfg:SISO, BACK

## Exposure Conditions

Band	Band n26	TSL Permittivity	43.3
Frequency [MHz]   Channel Number	831.500   166300	TSL Conductivity [S/m]	0.872
Group   UID	5G NR FR1 FDD   10939-AAC	Phantom Section   TSL	Flat   HSL
Conversion Factor	8.76	Test Distance [mm]	5.00

## Hardware Setup

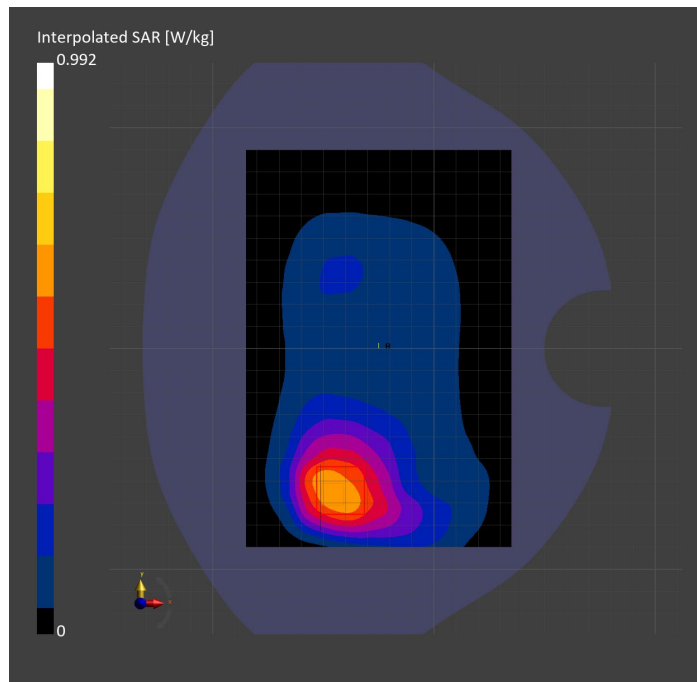
Probe   Calibration Date	EX3DV4 - SN7806   2023-04-04	Phantom	Twin-SAM V8.0 (30deg probe tilt)
DAE   Calibration Date	DAE4 Sn1784   2023-04-03	TSL Type	HBBL-600-10000
Software Version	16.2.4.2524		

## Scan Setup

	Area Scan	Zoom Scan
Grid Extents [mm]	120.0 x 180.0	30.0 x 30.0 x 30.0
Grid Steps [mm]	15.0 x 15.0	6.0 x 6.0 x 1.5
Sensor Surface [mm]	3.0	1.4
Graded Grid	N/A	Yes
M2/M1 [%]		84.0
Dist 3dB Peak [mm]		11.4

## Measurement Results

	Area Scan	Zoom Scan
psSAR1g [W/Kg]	0.567	<b>0.592</b>
psSAR10g [W/Kg]	0.378	<b>0.387</b>
Power Drift [dB]	N/A	0.01



# Measurement Report for Band n26: 5G NR (DFT-s-OFDM, 1 RB, 20 MHz, QPSK, 15 kHz) RBPosition:Mid AntennaCfg:SISO, EDGE RIGHT

## Exposure Conditions

Band	Band n26	TSL Permittivity	43.3
Frequency [MHz]   Channel Number	831.500   166300	TSL Conductivity [S/m]	0.872
Group   UID	5G NR FR1 FDD   10931-AAC	Phantom Section   TSL	Flat   HSL
Conversion Factor	8.76	Test Distance [mm]	5.00

## Hardware Setup

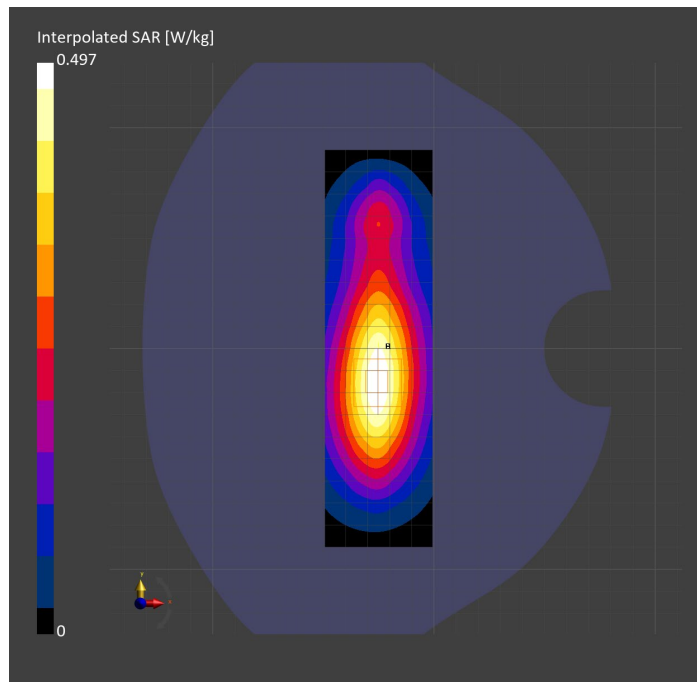
Probe   Calibration Date	EX3DV4 - SN7806   2023-04-04	Phantom	Twin-SAM V8.0 (30deg probe tilt)
DAE   Calibration Date	DAE4 Sn1784   2023-04-03	TSL Type	HBBL-600-10000
Software Version	16.2.4.2524		

## Scan Setup

	Area Scan	Zoom Scan
Grid Extents [mm]	48.6 x 180.0	30.0 x 30.0 x 30.0
Grid Steps [mm]	8.1 x 15.0	6.0 x 6.0 x 1.5
Sensor Surface [mm]	3.0	1.4
Graded Grid	N/A	Yes
M2/M1 [%]		82.9
Dist 3dB Peak [mm]		14.6

## Measurement Results

	Area Scan	Zoom Scan
psSAR1g [W/Kg]	0.295	<b>0.296</b>
psSAR10g [W/Kg]	0.192	<b>0.192</b>
Power Drift [dB]	N/A	0.09



# Measurement Report for Band n26: 5G NR (DFT-s-OFDM, 1 RB, 20 MHz, QPSK, 15 kHz) RBPosition:Mid AntennaCfg:SISO, CHEEK

## Exposure Conditions

Band	Band n26	TSL Permittivity	41.1
Frequency [MHz]   Channel Number	831.500   166300	TSL Conductivity [S/m]	0.867
Group   UID	5G NR FR1 FDD   10931-AAC	Phantom Section   TSL	RightHead   HSL
Conversion Factor	7.83	Test Distance [mm]	0.00

## Hardware Setup

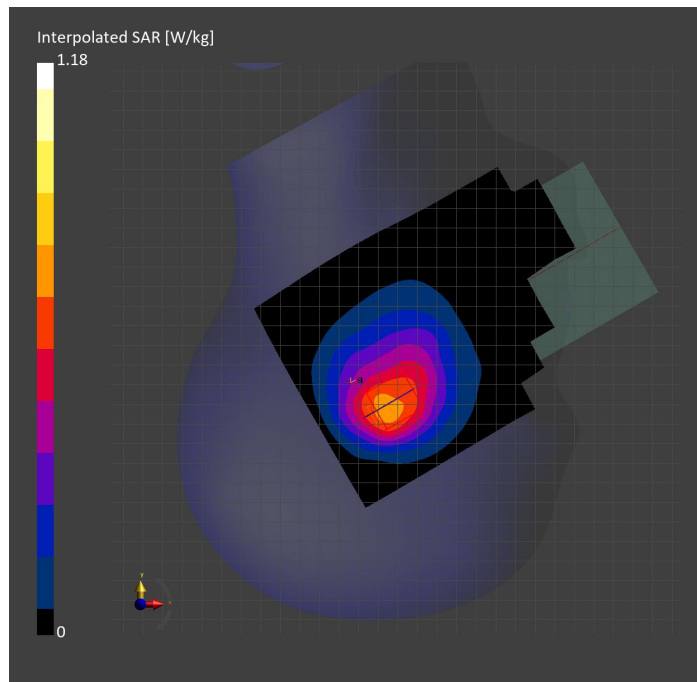
Probe   Calibration Date	EX3DV4 - SN3749   2023-01-27	Phantom	Twin-SAM V8.0 (30deg probe tilt)
DAE   Calibration Date	DAE4 Sn1357   2023-01-27	TSL Type	HBBL-600-10000
Software Version	16.2.4.2524		

## Scan Setup

	Area Scan	Zoom Scan
Grid Extents [mm]	120.0 x 210.0	30.0 x 30.0 x 30.0
Grid Steps [mm]	15.0 x 15.0	6.0 x 6.0 x 1.5
Sensor Surface [mm]	3.0	1.4
Graded Grid	N/A	Yes
M2/M1 [%]		77.0
Dist 3dB Peak [mm]		15.6

## Measurement Results

	Area Scan	Zoom Scan
psSAR1g [W/Kg]	0.643	<b>0.627</b>
psSAR10g [W/Kg]	0.427	<b>0.431</b>
Power Drift [dB]	N/A	-0.03





# Measurement Report for Band n30: 5G NR (DFT-s-OFDM, 1 RB, 10 MHz, QPSK, 15 kHz) RBPosition:Mid AntennaCfg:SISO, CHEEK

## Exposure Conditions

<b>Band</b>	Band n30	<b>TSL Permittivity</b>	40.7
<b>Frequency [MHz]   Channel Number</b>	2310.000   462000	<b>TSL Conductivity [S/m]</b>	1.65
<b>Group   UID</b>	5G NR FR1 FDD   10929-AAD	<b>Phantom Section   TSL</b>	RightHead   HSL
<b>Conversion Factor</b>	7.71	<b>Test Distance [mm]</b>	0.00

## Hardware Setup

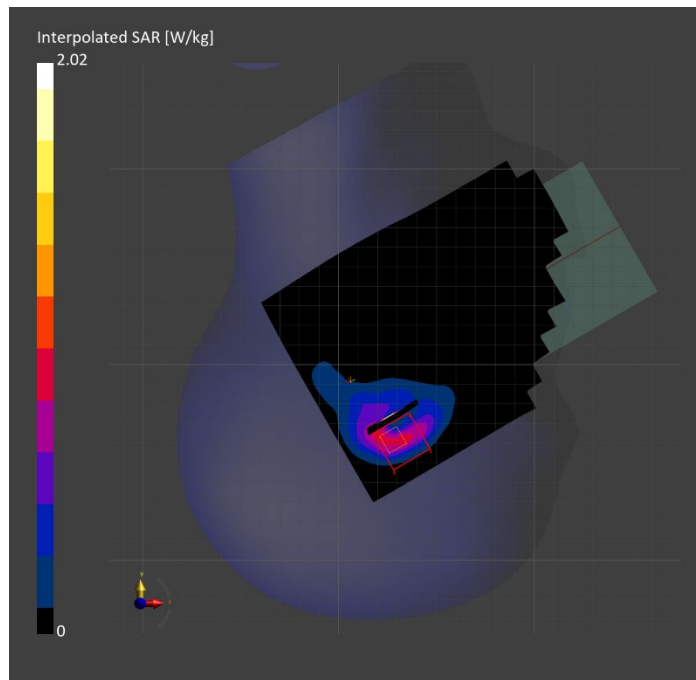
<b>Probe   Calibration Date</b>	EX3DV4 - SN7482   2023-04-18	<b>Phantom</b>	Twin-SAM V8.0 (30deg probe tilt)
<b>DAE   Calibration Date</b>	DAE4 Sn1380   2023-02-14	<b>TSL Type</b>	HBBL-600-10000
<b>Software Version</b>	16.2.4.2524		

## Scan Setup

	Area Scan	Zoom Scan
<b>Grid Extents [mm]</b>	120.0 x 200.0	30.0 x 30.0 x 30.0
<b>Grid Steps [mm]</b>	10.0 x 10.0	5.0 x 5.0 x 1.5
<b>Sensor Surface [mm]</b>	3.0	1.4
<b>Graded Grid</b>	N/A	Yes
<b>M2/M1 [%]</b>		74.6
<b>Dist 3dB Peak [mm]</b>		3.0

## Measurement Results

	Area Scan	Zoom Scan
<b>psSAR1g [W/Kg]</b>	0.685	<b>0.765</b>
<b>psSAR10g [W/Kg]</b>	0.338	<b>0.291</b>
<b>Power Drift [dB]</b>	N/A	-0.07



# Measurement Report for Band n30: 5G NR (DFT-s-OFDM, 1 RB, 10 MHz, QPSK, 15 kHz) RBPosition:Mid AntennaCfg:SISO, BACK

## Exposure Conditions

Band	Band n30	TSL Permittivity	40.7
Frequency [MHz]   Channel Number	2310.000   462000	TSL Conductivity [S/m]	1.65
Group   UID	5G NR FR1 FDD   10929-AAD	Phantom Section   TSL	Flat   HSL
Conversion Factor	7.71	Test Distance [mm]	5.00

## Hardware Setup

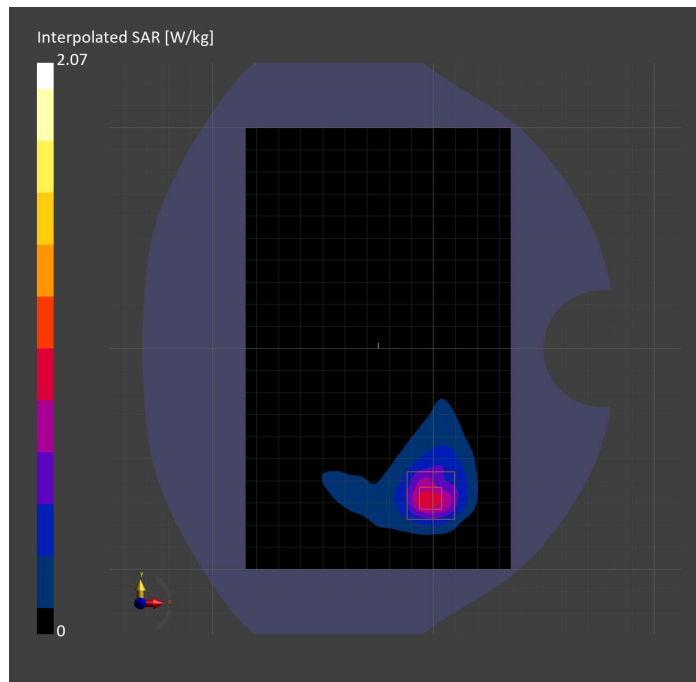
Probe   Calibration Date	EX3DV4 - SN7482   2023-04-18	Phantom	Twin-SAM V8.0 (30deg probe tilt)
DAE   Calibration Date	DAE4 Sn1380   2023-02-14	TSL Type	HBBL-600-10000
Software Version	16.2.4.2524		

## Scan Setup

	Area Scan	Zoom Scan
Grid Extents [mm]	120.0 x 200.0	30.0 x 30.0 x 30.0
Grid Steps [mm]	10.0 x 10.0	5.0 x 5.0 x 1.5
Sensor Surface [mm]	3.0	1.4
Graded Grid	N/A	Yes
M2/M1 [%]		74.1
Dist 3dB Peak [mm]		7.7

## Measurement Results

	Area Scan	Zoom Scan
psSAR1g [W/Kg]	0.747	<b>0.819</b>
psSAR10g [W/Kg]	0.358	<b>0.348</b>
Power Drift [dB]	N/A	0.05



# Measurement Report for Band n30: 5G NR (DFT-s-OFDM, 50% RB, 10 MHz, QPSK, 15 kHz) RBPosition:Mid AntennaCfg:SISO, EDGE RIGHT

## Exposure Conditions

Band	Band n30	TSL Permittivity	39.9
Frequency [MHz]   Channel Number	2310.000   462000	TSL Conductivity [S/m]	1.62
Group   UID	5G NR FR1 FDD   10937-AAD	Phantom Section   TSL	Flat   HSL
Conversion Factor	7.71	Test Distance [mm]	5.00

## Hardware Setup

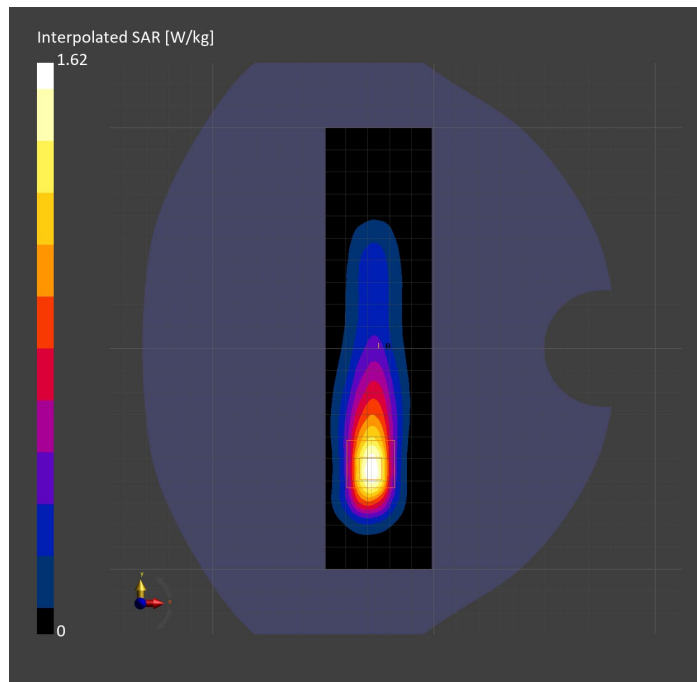
Probe   Calibration Date	EX3DV4 - SN7482   2023-04-18	Phantom	Twin-SAM V8.0 (30deg probe tilt)
DAE   Calibration Date	DAE4 Sn1380   2023-02-14	TSL Type	HBBL-600-10000
Software Version	16.2.4.2524		

## Scan Setup

	Area Scan	Zoom Scan
Grid Extents [mm]	48.0 x 200.0	30.0 x 30.0 x 30.0
Grid Steps [mm]	8.0 x 10.0	5.0 x 5.0 x 1.5
Sensor Surface [mm]	3.0	1.4
Graded Grid	N/A	Yes
M2/M1 [%]		77.6
Dist 3dB Peak [mm]		7.0

## Measurement Results

	Area Scan	Zoom Scan
psSAR1g [W/Kg]	0.673	<b>0.731</b>
psSAR10g [W/Kg]	0.315	<b>0.326</b>
Power Drift [dB]	N/A	0.01



# Measurement Report for Band n41: 5G NR (DFT-s-OFDM, 1 RB, 100 MHz, QPSK, 30 kHz) RBPosition:Mid AntennaCfg:SISO, EDGE RIGHT

## Exposure Conditions

Band	Band n41	TSL Permittivity	40.1
Frequency [MHz]   Channel Number	2592.990   518598	TSL Conductivity [S/m]	1.89
Group   UID	5G NR FR1 TDD   10866-AAF	Phantom Section   TSL	Flat   HSL
Conversion Factor	7.33	Test Distance [mm]	5.00

## Hardware Setup

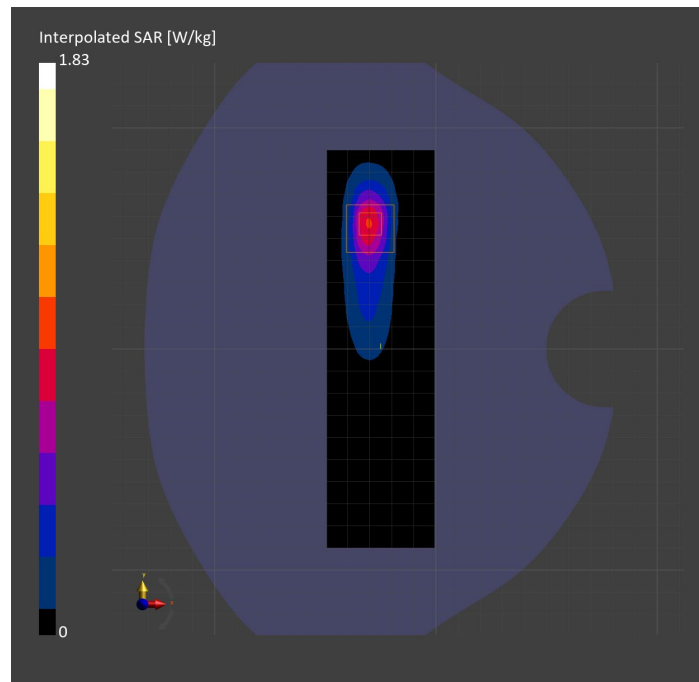
Probe   Calibration Date	EX3DV4 - SN7808   2023-04-18	Phantom	Twin-SAM V8.0 (30deg probe tilt)
DAE   Calibration Date	DAE4 Sn1796   2023-04-03	TSL Type	HBBL-600-10000
Software Version	16.2.4.2524		

## Scan Setup

	Area Scan	Zoom Scan
Grid Extents [mm]	48.6 x 180.0	30.0 x 30.0 x 30.0
Grid Steps [mm]	8.1 x 10.0	5.0 x 5.0 x 1.5
Sensor Surface [mm]	3.0	1.4
Graded Grid	N/A	Yes
M2/M1 [%]		75.1
Dist 3dB Peak [mm]		7.0

## Measurement Results

	Area Scan	Zoom Scan
psSAR1g [W/Kg]	0.686	<b>0.730</b>
psSAR10g [W/Kg]	0.292	<b>0.295</b>
Power Drift [dB]	N/A	-0.00



# Measurement Report for Band n41: 5G NR (DFT-s-OFDM, 50% RB, 100 MHz, QPSK, 30 kHz) RBPosition:Mid AntennaCfg:SISO, BACK

## Exposure Conditions

Band	Band n41	TSL Permittivity	37.9
Frequency [MHz]   Channel Number	2592.990   518598	TSL Conductivity [S/m]	1.96
Group   UID	5G NR FR1 TDD   10917-AAD	Phantom Section   TSL	Flat   HSL
Conversion Factor	7.32	Test Distance [mm]	5.00

## Hardware Setup

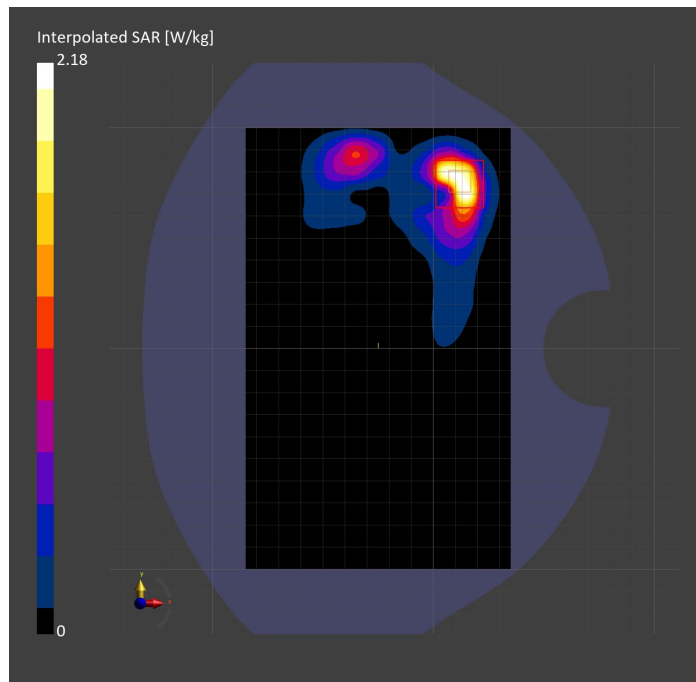
Probe   Calibration Date	EX3DV4 - SN3885   2022-09-20	Phantom	Twin-SAM V5.0 (30deg probe tilt)
DAE   Calibration Date	DAE4 Sn1548   2023-02-14	TSL Type	HBBL-600-10000
Software Version	16.2.4.2524		

## Scan Setup

	Area Scan	Zoom Scan
Grid Extents [mm]	120.0 x 200.0	30.0 x 30.0 x 30.0
Grid Steps [mm]	10.0 x 10.0	5.0 x 5.0 x 1.5
Sensor Surface [mm]	3.0	1.4
Graded Grid	N/A	Yes
M2/M1 [%]		78.0
Dist 3dB Peak [mm]		6.5

## Measurement Results

	Area Scan	Zoom Scan
psSAR1g [W/Kg]	0.859	<b>0.917</b>
psSAR10g [W/Kg]	0.369	<b>0.359</b>
Power Drift [dB]	N/A	0.02



# Measurement Report for Band n41: 5G NR (DFT-s-OFDM, 1 RB, 100 MHz, QPSK, 30 kHz) RBPosition:Mid AntennaCfg:SISO, CHEEK

## Exposure Conditions

Band	Band n41	TSL Permittivity	40.3
Frequency [MHz]   Channel Number	2592.990   518598	TSL Conductivity [S/m]	1.90
Group   UID	5G NR FR1 TDD   10866-AAF	Phantom Section   TSL	LeftHead   HSL
Conversion Factor	7.33	Test Distance [mm]	0.00

## Hardware Setup

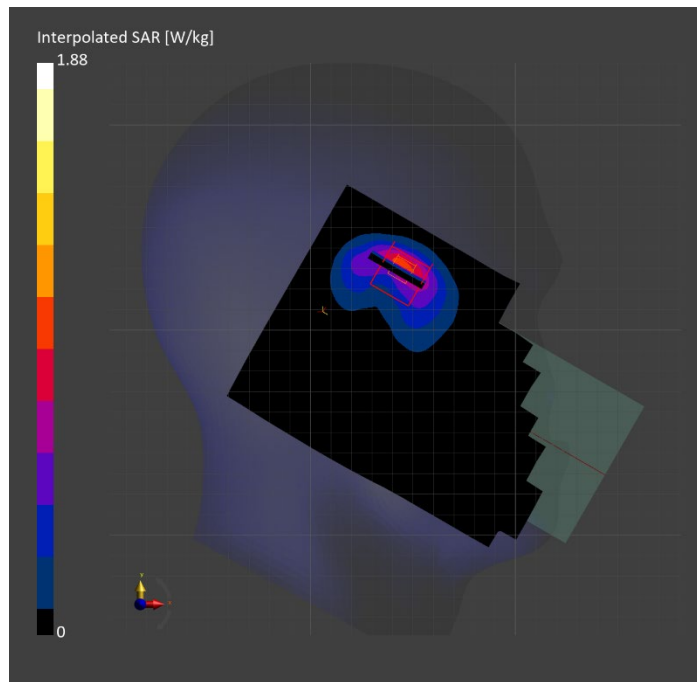
Probe   Calibration Date	EX3DV4 - SN7808   2023-04-18	Phantom	Twin-SAM V8.0 (30deg probe tilt)
DAE   Calibration Date	DAE4 Sn1796   2023-04-03	TSL Type	HBBL-600-10000
Software Version	16.2.4.2524		

## Scan Setup

	Area Scan	Zoom Scan
Grid Extents [mm]	120.0 x 200.0	30.0 x 30.0 x 30.0
Grid Steps [mm]	10.0 x 10.0	5.0 x 5.0 x 1.5
Sensor Surface [mm]	3.0	1.4
Graded Grid	N/A	Yes
M2/M1 [%]		74.8
Dist 3dB Peak [mm]		7.2

## Measurement Results

	Area Scan	Zoom Scan
psSAR1g [W/Kg]	0.729	<b>0.767</b>
psSAR10g [W/Kg]	0.334	<b>0.347</b>
Power Drift [dB]	N/A	0.09



# Measurement Report for Band n48: 5G NR (DFT-s-OFDM, 1 RB, 40 MHz, QPSK, 30 kHz) RBPosition:Mid AntennaCfg:SISO, BACK

## Exposure Conditions

Band	Band n48	TSL Permittivity	37.0
Frequency [MHz]   Channel Number	3643.315   642888	TSL Conductivity [S/m]	2.96
Group   UID	5G NR FR1 TDD   10903-AAD	Phantom Section   TSL	Flat   HSL
Conversion Factor	6.92	Test Distance [mm]	5.00

## Hardware Setup

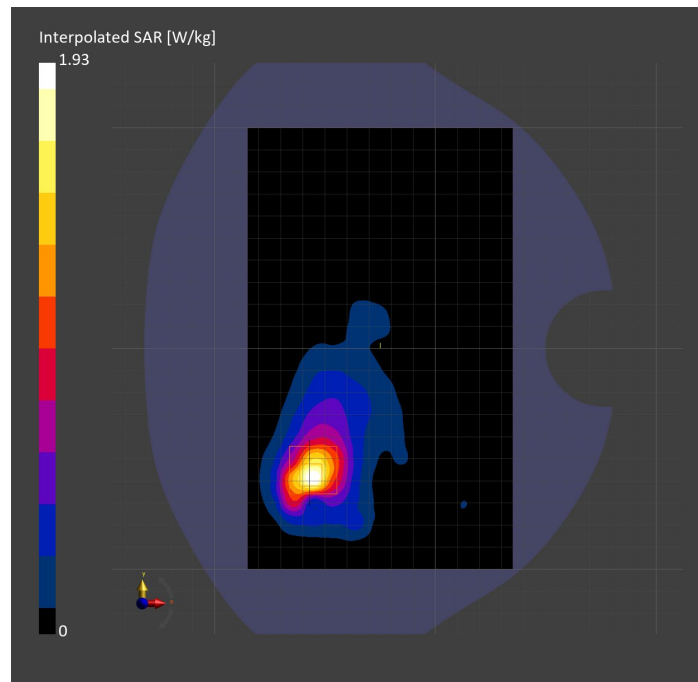
Probe   Calibration Date	EX3DV4 - SN7335   2023-01-26	Phantom	Twin-SAM V8.0 (30deg probe tilt)
DAE   Calibration Date	DAE4ip Sn1619   2023-04-18	TSL Type	HBBL-600-10000
Software Version	16.2.4.2524		

## Scan Setup

	Area Scan	Zoom Scan
Grid Extents [mm]	120.0 x 200.0	28.0 x 28.0 x 28.0
Grid Steps [mm]	10.0 x 10.0	5.0 x 5.0 x 1.4
Sensor Surface [mm]	3.0	1.4
Graded Grid	N/A	Yes
M2/M1 [%]		75.1
Dist 3dB Peak [mm]		7.1

## Measurement Results

	Area Scan	Zoom Scan
psSAR1g [W/Kg]	0.642	<b>0.720</b>
psSAR10g [W/Kg]	0.262	<b>0.274</b>
Power Drift [dB]	N/A	0.02



# Measurement Report for Band n48: 5G NR (DFT-s-OFDM, 50% RB, 40 MHz, QPSK, 30 kHz) RBPosition:Mid AntennaCfg:SISO, CHEEK

## Exposure Conditions

Band	Band n48	TSL Permittivity	38.9
Frequency [MHz]   Channel Number	3643.315   642888	TSL Conductivity [S/m]	3.06
Group   UID	5G NR FR1 TDD   10913-AAD	Phantom Section   TSL	RightHead   HSL
Conversion Factor	6.66	Test Distance [mm]	0.00

## Hardware Setup

Probe   Calibration Date	EX3DV4 - SN3990   2023-02-17	Phantom	Twin-SAM V5.0 (30deg probe tilt)
DAE   Calibration Date	DAE4 Sn1545   2023-02-14	TSL Type	HBBL-600-10000
Software Version	16.2.4.2524		

## Scan Setup

	Area Scan	Zoom Scan
Grid Extents [mm]	120.0 x 200.0	30.0 x 30.0 x 28.0
Grid Steps [mm]	10.0 x 10.0	5.0 x 5.0 x 1.4
Sensor Surface [mm]	3.0	1.4
Graded Grid	N/A	Yes
M2/M1 [%]		70.6
Dist 3dB Peak [mm]		6.1

## Measurement Results

	Area Scan	Zoom Scan
psSAR1g [W/Kg]	0.584	<b>0.612</b>
psSAR10g [W/Kg]	0.227	<b>0.228</b>
Power Drift [dB]	N/A	0.02

