

# Measurement Report for Band n53: 5G NR (DFT-s-OFDM, 1 RB, 10 MHz, QPSK, 30 kHz) RBPosition:Mid AntennaCfg:SISO, BACK

## Exposure Conditions

Band	Band n53	TSL Permittivity	40.3
Frequency [MHz]   Channel Number	2489.200   497840	TSL Conductivity [S/m]	1.79
Group   UID	5G NR FR1 TDD   10898-AAC	Phantom Section   TSL	Flat   HSL
Conversion Factor	7.64	Test Distance [mm]	5.00

## Hardware Setup

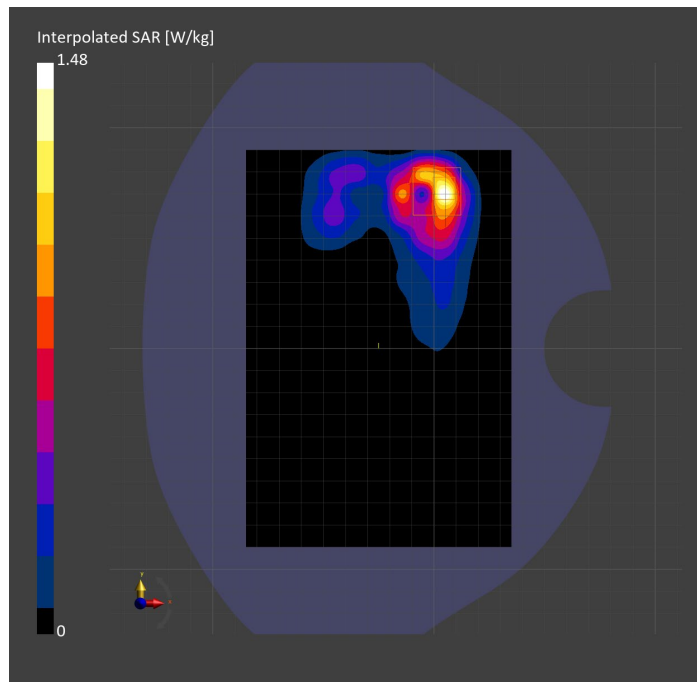
Probe   Calibration Date	EX3DV4 - SN7587   2023-04-18	Phantom	Twin-SAM V8.0 (30deg probe tilt)
DAE   Calibration Date	DAE4 Sn1239   2023-03-16	TSL Type	HBBL-600-10000
Software Version	16.2.4.2524		

## Scan Setup

	Area Scan	Zoom Scan
Grid Extents [mm]	120.0 x 180.0	30.0 x 30.0 x 30.0
Grid Steps [mm]	10.0 x 10.0	5.0 x 5.0 x 1.5
Sensor Surface [mm]	3.0	1.4
Graded Grid	N/A	Yes
M2/M1 [%]		79.4
Dist 3dB Peak [mm]		5.4

## Measurement Results

	Area Scan	Zoom Scan
psSAR1g [W/Kg]	0.621	<b>0.633</b>
psSAR10g [W/Kg]	0.275	<b>0.258</b>
Power Drift [dB]	N/A	-0.05



# Measurement Report for Band n53: 5G NR (DFT-s-OFDM, 1 RB, 10 MHz, QPSK, 30 kHz) RBPosition:Mid AntennaCfg:SISO, EDGE LEFT

## Exposure Conditions

Band	Band n53	TSL Permittivity	40.3
Frequency [MHz]   Channel Number	2489.200   497840	TSL Conductivity [S/m]	1.79
Group   UID	5G NR FR1 TDD   10898-AAC	Phantom Section   TSL	Flat   HSL
Conversion Factor	7.64	Test Distance [mm]	5.00

## Hardware Setup

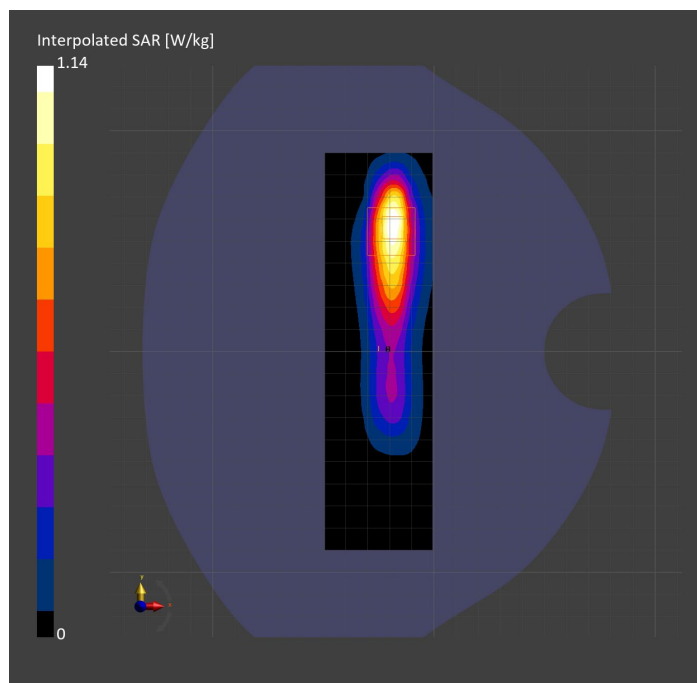
Probe   Calibration Date	EX3DV4 - SN7587   2023-04-18	Phantom	Twin-SAM V8.0 (30deg probe tilt)
DAE   Calibration Date	DAE4 Sn1239   2023-03-16	TSL Type	HBBL-600-10000
Software Version	16.2.4.2524		

## Scan Setup

	Area Scan	Zoom Scan
Grid Extents [mm]	48.6 x 180.0	30.0 x 30.0 x 30.0
Grid Steps [mm]	8.1 x 10.0	5.0 x 5.0 x 1.5
Sensor Surface [mm]	3.0	1.4
Graded Grid	N/A	Yes
M2/M1 [%]		78.8
Dist 3dB Peak [mm]		7.3

## Measurement Results

	Area Scan	Zoom Scan
psSAR1g [W/Kg]	0.546	<b>0.538</b>
psSAR10g [W/Kg]	0.250	<b>0.250</b>
Power Drift [dB]	N/A	-0.08



# Measurement Report for Band n66: 5G NR (DFT-s-OFDM, 1 RB, 40 MHz, QPSK, 15 kHz) RBPosition:Mid AntennaCfg:SISO, EDGE TOP

## Exposure Conditions

Band	Band n66	TSL Permittivity	38.2
Frequency [MHz]   Channel Number	1745.000   349000	TSL Conductivity [S/m]	1.32
Group   UID	5G NR FR1 FDD   10934-AAC	Phantom Section   TSL	Flat   HSL
Conversion Factor	8.66	Test Distance [mm]	5.00

## Hardware Setup

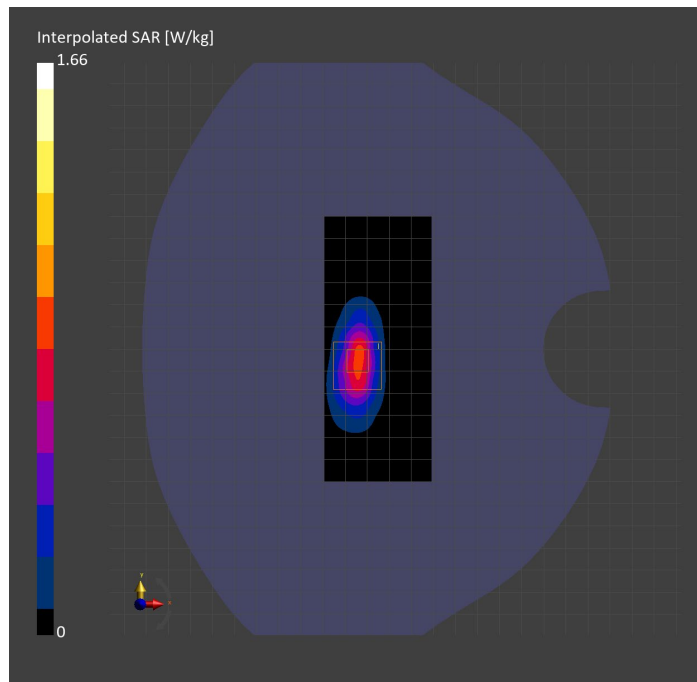
Probe   Calibration Date	EX3DV4 - SN7569   2023-04-18	Phantom	Twin-SAM V8.0 (30deg probe tilt)
DAE   Calibration Date	DAE4 Sn1547   2023-04-18	TSL Type	HBBL-600-10000
Software Version	16.2.4.2524		

## Scan Setup

	Area Scan	Zoom Scan
Grid Extents [mm]	48.6 x 120.0	30.0 x 30.0 x 30.0
Grid Steps [mm]	8.1 x 15.0	5.9 x 5.9 x 1.5
Sensor Surface [mm]	3.0	1.4
Graded Grid	N/A	Yes
M2/M1 [%]		76.5
Dist 3dB Peak [mm]		5.9

## Measurement Results

	Area Scan	Zoom Scan
psSAR1g [W/Kg]	0.695	<b>0.737</b>
psSAR10g [W/Kg]	0.324	<b>0.331</b>
Power Drift [dB]	N/A	0.05



# Measurement Report for Band n66: 5G NR (DFT-s-OFDM, 1 RB, 40 MHz, QPSK, 15 kHz) RBPosition:Mid AntennaCfg:SISO, BACK

## Exposure Conditions

Band	Band n66	TSL Permittivity	41.8
Frequency [MHz]   Channel Number	1745.000   349000	TSL Conductivity [S/m]	1.30
Group   UID	5G NR FR1 FDD   10934-AAC	Phantom Section   TSL	Flat   HSL
Conversion Factor	8.98	Test Distance [mm]	5.00

## Hardware Setup

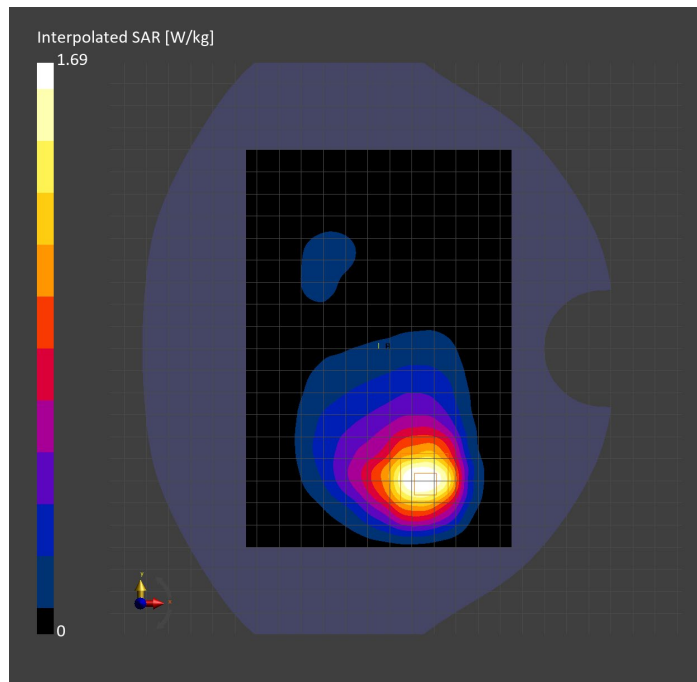
Probe   Calibration Date	EX3DV4 - SN3989   2023-01-26	Phantom	Twin-SAM V8.0 (30deg probe tilt)
DAE   Calibration Date	DAE4 Sn1257   2022-09-20	TSL Type	HBBL-600-10000
Software Version	16.2.4.2524		

## Scan Setup

	Area Scan	Zoom Scan
Grid Extents [mm]	120.0 x 180.0	30.0 x 30.0 x 30.0
Grid Steps [mm]	15.0 x 15.0	6.0 x 6.0 x 1.5
Sensor Surface [mm]	3.0	1.4
Graded Grid	N/A	Yes
M2/M1 [%]		79.4
Dist 3dB Peak [mm]		11.4

## Measurement Results

	Area Scan	Zoom Scan
psSAR1g [W/Kg]	0.747	<b>0.821</b>
psSAR10g [W/Kg]	0.429	<b>0.430</b>
Power Drift [dB]	N/A	0.03



# Measurement Report for Band n66: 5G NR (DFT-s-OFDM, 50% RB, 40 MHz, QPSK, 15 kHz) RBPosition:Mid AntennaCfg:SISO, CHEEK

## Exposure Conditions

Band	Band n66	TSL Permittivity	40.1
Frequency [MHz]   Channel Number	1745.000   349000	TSL Conductivity [S/m]	1.35
Group   UID	5G NR FR1 FDD   10942-AAC	Phantom Section   TSL	LeftHead   HSL
Conversion Factor	8.66	Test Distance [mm]	0.00

## Hardware Setup

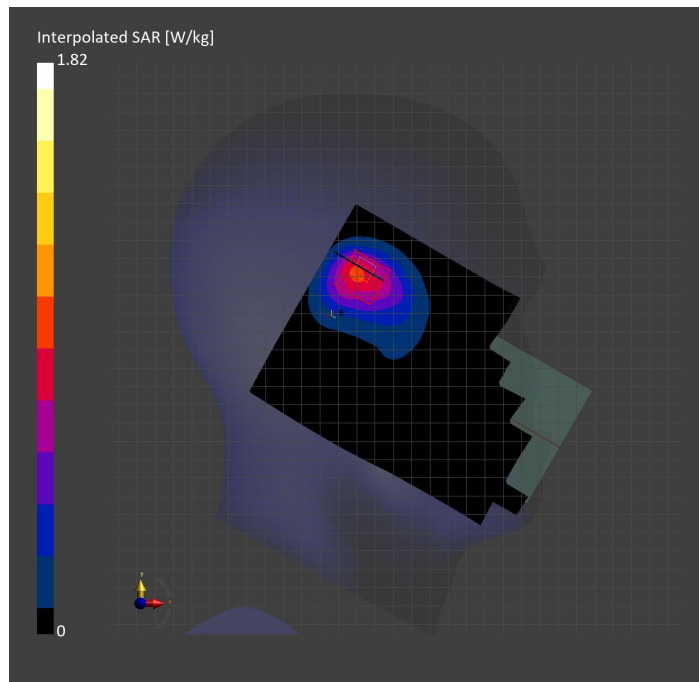
Probe   Calibration Date	EX3DV4 - SN7569   2023-04-18	Phantom	Twin-SAM V8.0 (30deg probe tilt)
DAE   Calibration Date	DAE4 Sn1547   2023-04-18	TSL Type	HBBL-600-10000
Software Version	16.2.4.2524		

## Scan Setup

	Area Scan	Zoom Scan
Grid Extents [mm]	120.0 x 180.0	30.0 x 30.0 x 30.0
Grid Steps [mm]	15.0 x 15.0	5.3 x 5.3 x 1.5
Sensor Surface [mm]	3.0	1.4
Graded Grid	N/A	Yes
M2/M1 [%]		70.8
Dist 3dB Peak [mm]		6.8

## Measurement Results

	Area Scan	Zoom Scan
psSAR1g [W/Kg]	0.773	<b>0.767</b>
psSAR10g [W/Kg]	0.441	<b>0.422</b>
Power Drift [dB]	N/A	0.05



# Measurement Report for Band n70: 5G NR (DFT-s-OFDM, 50% RB, 15 MHz, QPSK, 15 kHz) RBPosition:Mid AntennaCfg:SISO, EDGE TOP

## Exposure Conditions

Band	Band n70	TSL Permittivity	41.7
Frequency [MHz]   Channel Number	1702.500   340500	TSL Conductivity [S/m]	1.31
Group   UID	5G NR FR1 FDD   10938-AAC	Phantom Section   TSL	Flat   HSL
Conversion Factor	8.66	Test Distance [mm]	5.00

## Hardware Setup

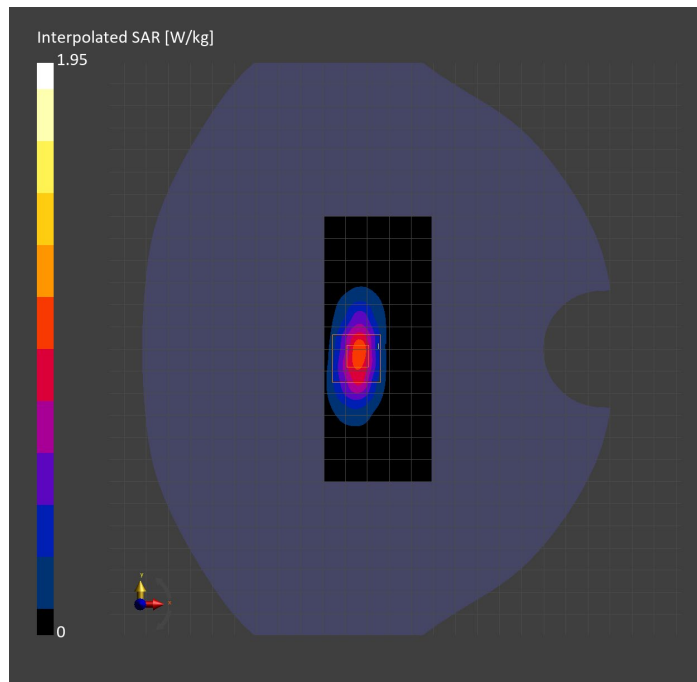
Probe   Calibration Date	EX3DV4 - SN7569   2023-04-18	Phantom	Twin-SAM V8.0 (30deg probe tilt)
DAE   Calibration Date	DAE4 Sn1547   2023-04-18	TSL Type	HBBL-600-10000
Software Version	16.2.4.2524		

## Scan Setup

	Area Scan	Zoom Scan
Grid Extents [mm]	48.6 x 120.0	30.0 x 30.0 x 30.0
Grid Steps [mm]	8.1 x 15.0	5.9 x 5.9 x 1.5
Sensor Surface [mm]	3.0	1.4
Graded Grid	N/A	Yes
M2/M1 [%]		76.9
Dist 3dB Peak [mm]		6.9

## Measurement Results

	Area Scan	Zoom Scan
psSAR1g [W/Kg]	0.846	<b>0.871</b>
psSAR10g [W/Kg]	0.395	<b>0.395</b>
Power Drift [dB]	N/A	0.00



# Measurement Report for Band n70: 5G NR (DFT-s-OFDM, 1 RB, 15 MHz, QPSK, 15 kHz) RBPosition:Mid AntennaCfg:SISO, BACK

## Exposure Conditions

Band	Band n70	TSL Permittivity	41.8
Frequency [MHz]   Channel Number	1702.500   340500	TSL Conductivity [S/m]	1.28
Group   UID	5G NR FR1 FDD   10930-AAC	Phantom Section   TSL	Flat   HSL
Conversion Factor	8.98	Test Distance [mm]	5.00

## Hardware Setup

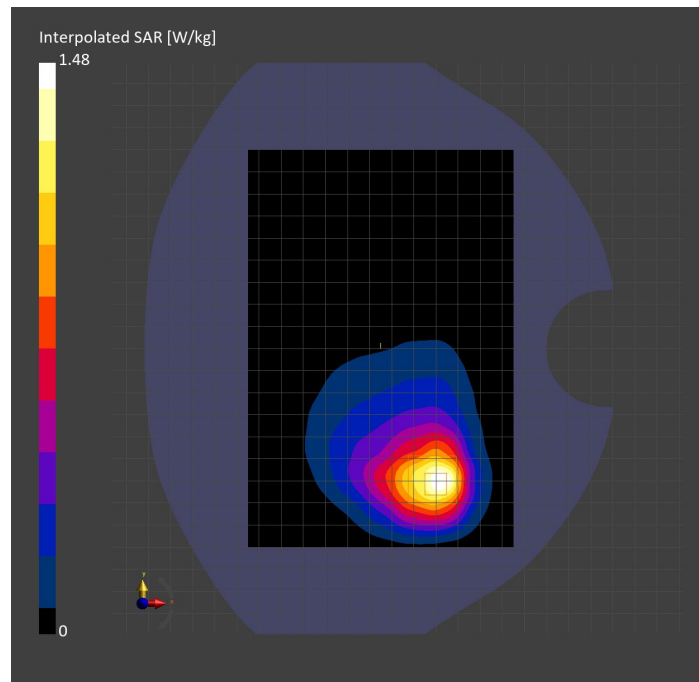
Probe   Calibration Date	EX3DV4 - SN3989   2023-01-26	Phantom	Twin-SAM V8.0 (30deg probe tilt)
DAE   Calibration Date	DAE4 Sn1257   2022-09-20	TSL Type	HBBL-600-10000
Software Version	16.2.4.2524		

## Scan Setup

	Area Scan	Zoom Scan
Grid Extents [mm]	120.0 x 180.0	30.0 x 30.0 x 30.0
Grid Steps [mm]	15.0 x 15.0	6.0 x 6.0 x 1.5
Sensor Surface [mm]	3.0	1.4
Graded Grid	N/A	Yes
M2/M1 [%]		79.8
Dist 3dB Peak [mm]		13.0

## Measurement Results

	Area Scan	Zoom Scan
psSAR1g [W/Kg]	0.684	<b>0.729</b>
psSAR10g [W/Kg]	0.381	<b>0.385</b>
Power Drift [dB]	N/A	-0.00



# Measurement Report for Band n70: 5G NR (DFT-s-OFDM, 50% RB, 15 MHz, QPSK, 15 kHz) RBPosition:Mid AntennaCfg:SISO, CHEEK

## Exposure Conditions

Band	Band n70	TSL Permittivity	38.6
Frequency [MHz]   Channel Number	1702.500   340500	TSL Conductivity [S/m]	1.30
Group   UID	5G NR FR1 FDD   10938-AAC	Phantom Section   TSL	LeftHead   HSL
Conversion Factor	8.98	Test Distance [mm]	0.00

## Hardware Setup

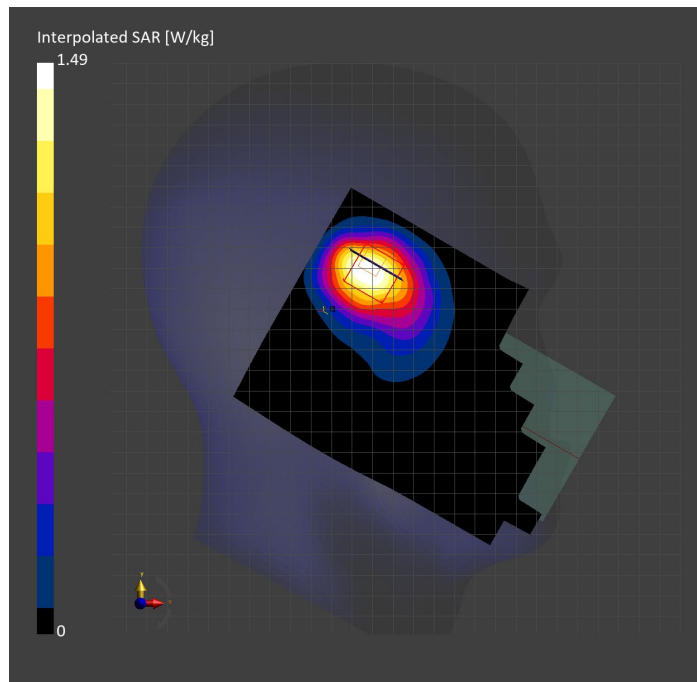
Probe   Calibration Date	EX3DV4 - SN3989   2023-01-26	Phantom	Twin-SAM V8.0 (30deg probe tilt)
DAE   Calibration Date	DAE4 Sn1257   2022-09-20	TSL Type	HBBL-600-10000
Software Version	16.2.4.2524		

## Scan Setup

	Area Scan	Zoom Scan
Grid Extents [mm]	120.0 x 180.0	30.0 x 30.0 x 30.0
Grid Steps [mm]	15.0 x 15.0	6.0 x 6.0 x 1.5
Sensor Surface [mm]	3.0	1.4
Graded Grid	N/A	Yes
M2/M1 [%]		81.0
Dist 3dB Peak [mm]		7.6

## Measurement Results

	Area Scan	Zoom Scan
psSAR1g [W/Kg]	0.752	<b>0.785</b>
psSAR10g [W/Kg]	0.437	<b>0.451</b>
Power Drift [dB]	N/A	0.00





# Measurement Report for Band n71: 5G NR (DFT-s-OFDM, 1 RB, 20 MHz, QPSK, 15 kHz) RBPosition:Mid AntennaCfg:SISO, EDGE RIGHT

## Exposure Conditions

Band	Band n71	TSL Permittivity	43.1
Frequency [MHz]   Channel Number	680.500   136100	TSL Conductivity [S/m]	0.809
Group   UID	5G NR FR1 FDD   10931-AAC	Phantom Section   TSL	Flat   HSL
Conversion Factor	10.62	Test Distance [mm]	5.00

## Hardware Setup

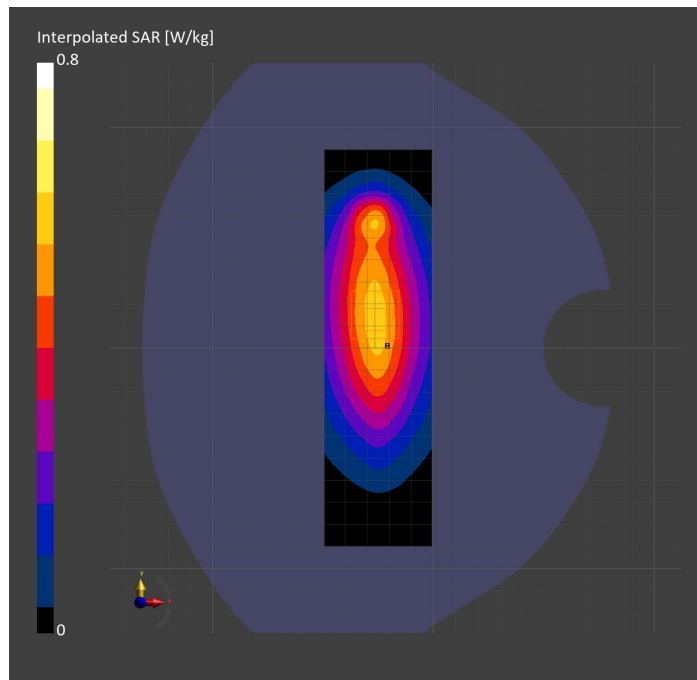
Probe   Calibration Date	EX3DV4 - SN7589   2023-04-18	Phantom	Twin-SAM V5.0 (30deg probe tilt)
DAE   Calibration Date	DAE4 Sn1544   2023-01-24	TSL Type	HBBL-600-10000
Software Version	16.2.4.2524		

## Scan Setup

	Area Scan	Zoom Scan
Grid Extents [mm]	48.6 x 180.0	30.0 x 30.0 x 30.0
Grid Steps [mm]	8.1 x 15.0	6.0 x 6.0 x 1.5
Sensor Surface [mm]	3.0	1.4
Graded Grid	N/A	Yes
M2/M1 [%]		84.9
Dist 3dB Peak [mm]		> 15.0

## Measurement Results

	Area Scan	Zoom Scan
psSAR1g [W/Kg]	0.500	<b>0.503</b>
psSAR10g [W/Kg]	0.337	<b>0.340</b>
Power Drift [dB]	N/A	0.04



# Measurement Report for Band n71: 5G NR (DFT-s-OFDM, 1 RB, 20 MHz, QPSK, 15 kHz) RBPosition:Mid AntennaCfg:SISO, CHEEK

## Exposure Conditions

Band	Band n71	TSL Permittivity	42.7
Frequency [MHz]   Channel Number	680.500   136100	TSL Conductivity [S/m]	0.851
Group   UID	5G NR FR1 FDD   10931-AAC	Phantom Section   TSL	RightHead   HSL
Conversion Factor	8.93	Test Distance [mm]	0.00

## Hardware Setup

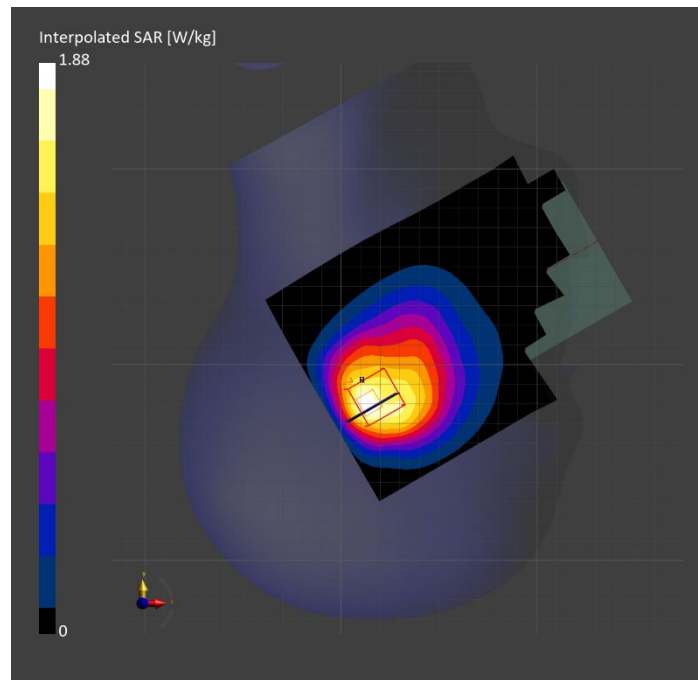
Probe   Calibration Date	EX3DV4 - SN7448   2023-02-14	Phantom	Twin-SAM V5.0 (30deg probe tilt)
DAE   Calibration Date	DAE4 Sn1472   2023-01-23	TSL Type	HBBL-600-10000
Software Version	16.2.4.2524		

## Scan Setup

	Area Scan	Zoom Scan
Grid Extents [mm]	120.0 x 180.0	30.0 x 30.0 x 30.0
Grid Steps [mm]	15.0 x 15.0	6.0 x 6.0 x 1.5
Sensor Surface [mm]	3.0	1.4
Graded Grid	N/A	Yes
M2/M1 [%]		71.2
Dist 3dB Peak [mm]		7.0

## Measurement Results

	Area Scan	Zoom Scan
psSAR1g [W/Kg]	0.735	<b>0.783</b>
psSAR10g [W/Kg]	0.491	<b>0.448</b>
Power Drift [dB]	N/A	-0.04



# Measurement Report for Band n71: 5G NR (DFT-s-OFDM, 1 RB, 20 MHz, QPSK, 15 kHz) RBPosition:Mid AntennaCfg:SISO, BACK

## Exposure Conditions

Band	Band n71	TSL Permittivity	42.7
Frequency [MHz]   Channel Number	680.500   136100	TSL Conductivity [S/m]	0.851
Group   UID	5G NR FR1 FDD   10931-AAC	Phantom Section   TSL	Flat   HSL
Conversion Factor	8.93	Test Distance [mm]	5.00

## Hardware Setup

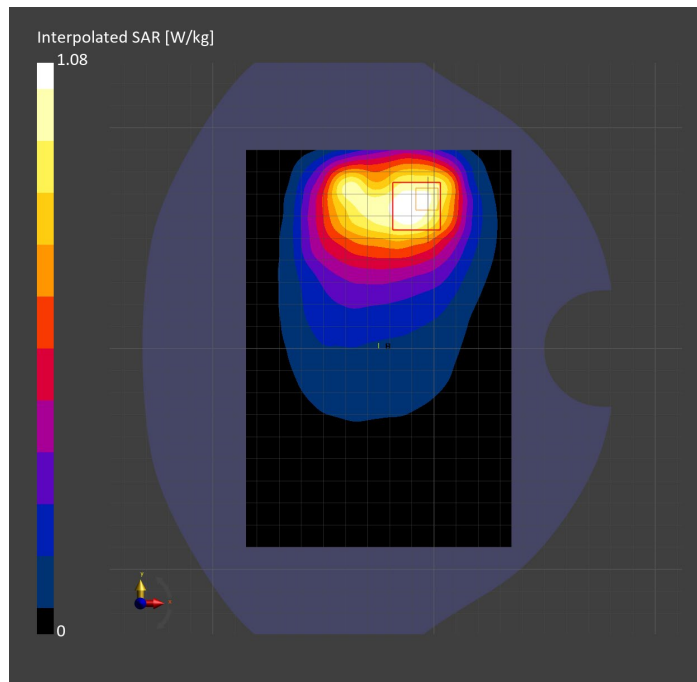
Probe   Calibration Date	EX3DV4 - SN7448   2023-02-14	Phantom	Twin-SAM V5.0 (30deg probe tilt)
DAE   Calibration Date	DAE4 Sn1472   2023-01-23	TSL Type	HBBL-600-10000
Software Version	16.2.4.2524		

## Scan Setup

	Area Scan	Zoom Scan
Grid Extents [mm]	120.0 x 180.0	30.0 x 30.0 x 30.0
Grid Steps [mm]	15.0 x 15.0	6.0 x 6.0 x 1.5
Sensor Surface [mm]	3.0	1.4
Graded Grid	N/A	Yes
M2/M1 [%]		78.0
Dist 3dB Peak [mm]		17.9

## Measurement Results

	Area Scan	Zoom Scan
psSAR1g [W/Kg]	0.547	<b>0.546</b>
psSAR10g [W/Kg]	0.371	<b>0.309</b>
Power Drift [dB]	N/A	-0.01



# Measurement Report for Band n77: 5G NR (DFT-s-OFDM, 1 RB, 100 MHz, QPSK, 30 kHz) RBPosition:Mid AntennaCfg:SISO, EDGE LEFT

## Exposure Conditions

Band	Band n77	TSL Permittivity	38.8
Frequency [MHz]   Channel Number	3499.980   633332	TSL Conductivity [S/m]	2.82
Group   UID	5G NR FR1 TDD   10866-AAF	Phantom Section   TSL	Flat   HSL
Conversion Factor	6.87	Test Distance [mm]	5.00

## Hardware Setup

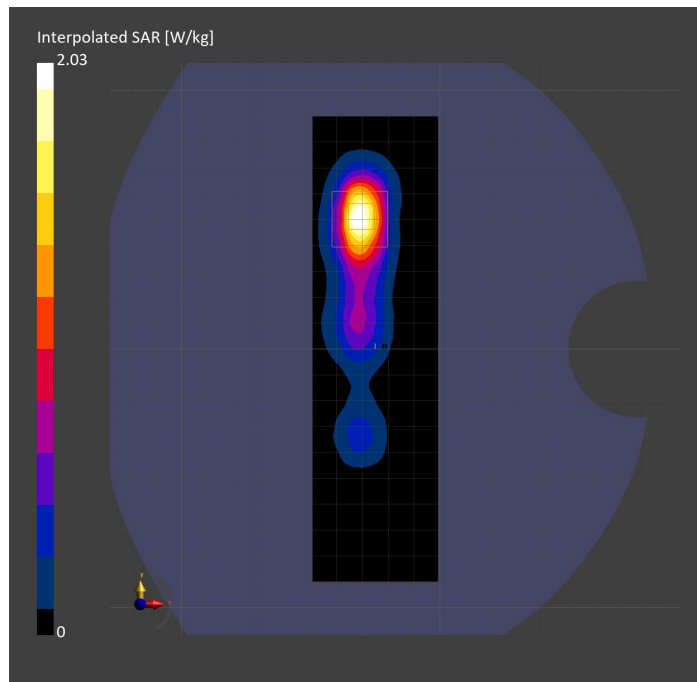
Probe   Calibration Date	EX3DV4 - SN7335   2023-01-26	Phantom	Twin-SAM V8.0 (30deg probe tilt)
DAE   Calibration Date	DAE4ip Sn1619   2023-04-18	TSL Type	HBBL-600-10000
Software Version	16.2.4.2524		

## Scan Setup

	Area Scan	Zoom Scan
Grid Extents [mm]	48.6 x 180.0	28.0 x 28.0 x 28.0
Grid Steps [mm]	8.1 x 10.0	5.0 x 5.0 x 1.4
Sensor Surface [mm]	3.0	1.4
Graded Grid	N/A	Yes
M2/M1 [%]		74.2
Dist 3dB Peak [mm]		7.0

## Measurement Results

	Area Scan	Zoom Scan
psSAR1g [W/Kg]	0.709	<b>0.738</b>
psSAR10g [W/Kg]	0.269	<b>0.268</b>
Power Drift [dB]	N/A	-0.03



# Measurement Report for Band n77: 5G NR (DFT-s-OFDM, 50% RB, 100 MHz, QPSK, 30 kHz) RBPosition:Mid AntennaCfg:SISO, BACK

## Exposure Conditions

Band	Band n77	TSL Permittivity	37.2
Frequency [MHz]   Channel Number	3499.980   633332	TSL Conductivity [S/m]	2.83
Group   UID	5G NR FR1 TDD   10917-AAD	Phantom Section   TSL	Flat   HSL
Conversion Factor	6.87	Test Distance [mm]	5.00

## Hardware Setup

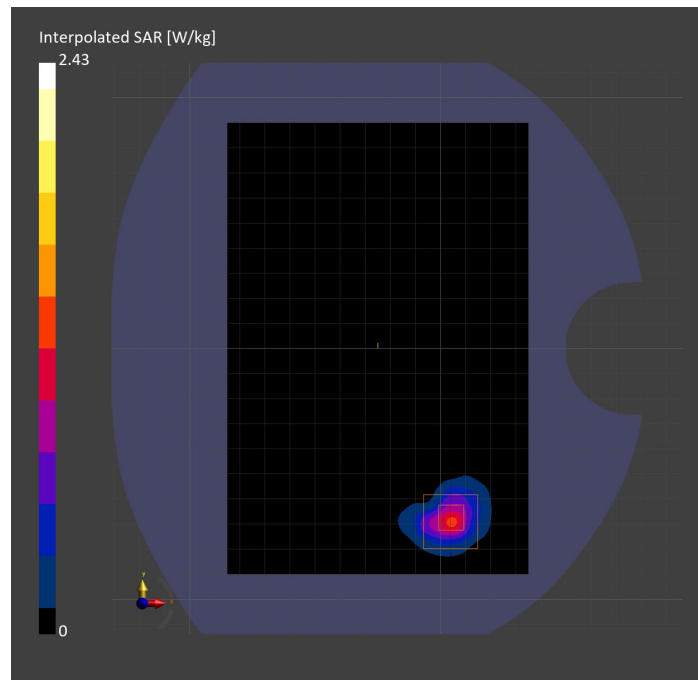
Probe   Calibration Date	EX3DV4 - SN7335   2023-01-26	Phantom	Twin-SAM V8.0 (30deg probe tilt)
DAE   Calibration Date	DAE4ip Sn1619   2023-04-18	TSL Type	HBBL-600-10000
Software Version	16.2.4.2524		

## Scan Setup

	Area Scan	Zoom Scan
Grid Extents [mm]	120.0 x 180.0	30.0 x 30.0 x 28.0
Grid Steps [mm]	10.0 x 10.0	5.0 x 5.0 x 1.4
Sensor Surface [mm]	3.0	1.4
Graded Grid	N/A	Yes
M2/M1 [%]		76.1
Dist 3dB Peak [mm]		6.4

## Measurement Results

	Area Scan	Zoom Scan
psSAR1g [W/Kg]	0.854	<b>0.897</b>
psSAR10g [W/Kg]	0.299	<b>0.310</b>
Power Drift [dB]	N/A	0.01



# Measurement Report for Band n77: 5G NR (DFT-s-OFDM, 50% RB, 100 MHz, QPSK, 30 kHz) RBPosition:Mid AntennaCfg:SISO, CHEEK

## Exposure Conditions

<b>Band</b>	Band n77	<b>TSL Permittivity</b>	38.4
<b>Frequency [MHz]   Channel Number</b>	3499.980   633332	<b>TSL Conductivity [S/m]</b>	2.77
<b>Group   UID</b>	5G NR FR1 TDD   10917-AAD	<b>Phantom Section   TSL</b>	LeftHead   HSL
<b>Conversion Factor</b>	6.79	<b>Test Distance [mm]</b>	0.00

## Hardware Setup

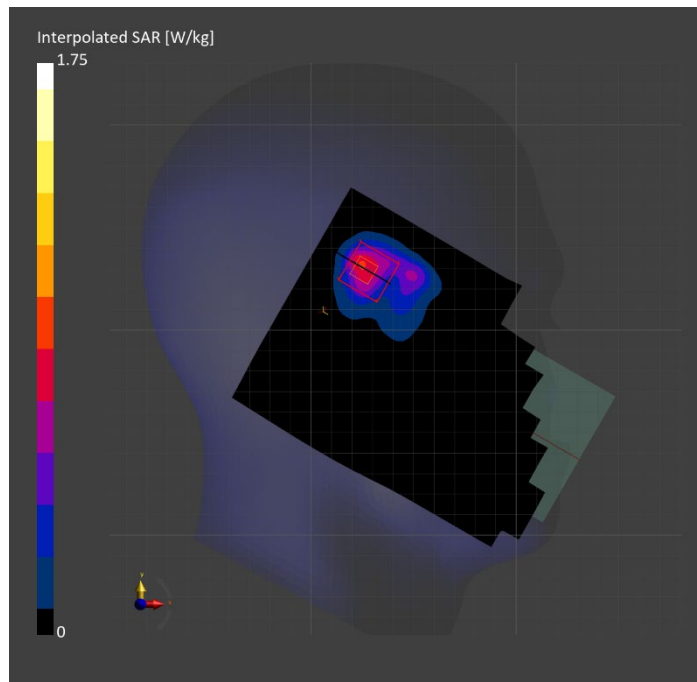
<b>Probe   Calibration Date</b>	EX3DV4 - SN3990   2023-02-17	<b>Phantom</b>	Twin-SAM V5.0 (30deg probe tilt)
<b>DAE   Calibration Date</b>	DAE4 Sn1545   2023-02-14	<b>TSL Type</b>	HBBL-600-10000
<b>Software Version</b>	16.2.4.2524		

## Scan Setup

	Area Scan	Zoom Scan
<b>Grid Extents [mm]</b>	120.0 x 180.0	30.0 x 30.0 x 28.0
<b>Grid Steps [mm]</b>	10.0 x 10.0	5.0 x 5.0 x 1.4
<b>Sensor Surface [mm]</b>	3.0	1.4
<b>Graded Grid</b>	N/A	Yes
<b>M2/M1 [%]</b>		78.0
<b>Dist 3dB Peak [mm]</b>		8.6

## Measurement Results

	Area Scan	Zoom Scan
<b>psSAR1g [W/Kg]</b>	0.637	<b>0.735</b>
<b>psSAR10g [W/Kg]</b>	0.271	<b>0.288</b>
<b>Power Drift [dB]</b>	N/A	0.00



# Measurement Report for Band n77: 5G NR (DFT-s-OFDM, 50% RB, 100 MHz, QPSK, 30 kHz) RBPosition:Mid AntennaCfg:SISO, CHEEK

## Exposure Conditions

Band	Band n77	TSL Permittivity	38.1
Frequency [MHz]   Channel Number	3858.000   657200	TSL Conductivity [S/m]	3.12
Group   UID	5G NR FR1 TDD   10917-AAD	Phantom Section   TSL	LeftHead   HSL
Conversion Factor	6.15	Test Distance [mm]	0.00

## Hardware Setup

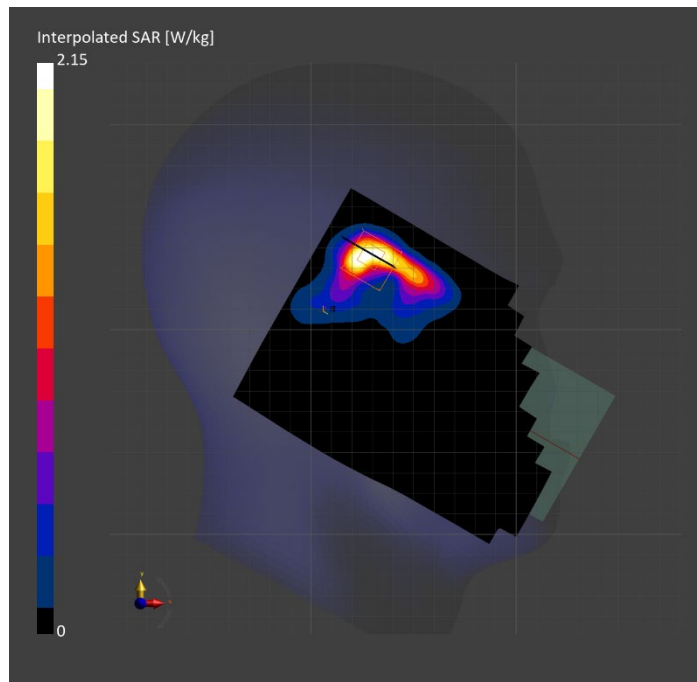
Probe   Calibration Date	EX3DV4 - SN7463   2023-04-19	Phantom	Twin-SAM V8.0 (30deg probe tilt)
DAE   Calibration Date	DAE4 Sn1673   2023-05-12	TSL Type	HBBL-600-10000
Software Version	16.2.4.2524		

## Scan Setup

	Area Scan	Zoom Scan
Grid Extents [mm]	120.0 x 180.0	30.0 x 30.0 x 28.0
Grid Steps [mm]	10.0 x 10.0	5.0 x 5.0 x 1.4
Sensor Surface [mm]	3.0	1.4
Graded Grid	N/A	Yes
M2/M1 [%]		68.3
Dist 3dB Peak [mm]		5.7

## Measurement Results

	Area Scan	Zoom Scan
psSAR1g [W/Kg]	0.556	<b>0.679</b>
psSAR10g [W/Kg]	0.215	<b>0.233</b>
Power Drift [dB]	N/A	-0.02



# Measurement Report for Band n77: 5G NR (DFT-s-OFDM, 50% RB, 100 MHz, QPSK, 30 kHz) RBPosition:Mid AntennaCfg:SISO, BACK

## Exposure Conditions

Band	Band n77	TSL Permittivity	37.9
Frequency [MHz]   Channel Number	3858.000   657200	TSL Conductivity [S/m]	3.13
Group   UID	5G NR FR1 TDD   10917-AAD	Phantom Section   TSL	Flat   HSL
Conversion Factor	6.15	Test Distance [mm]	5.00

## Hardware Setup

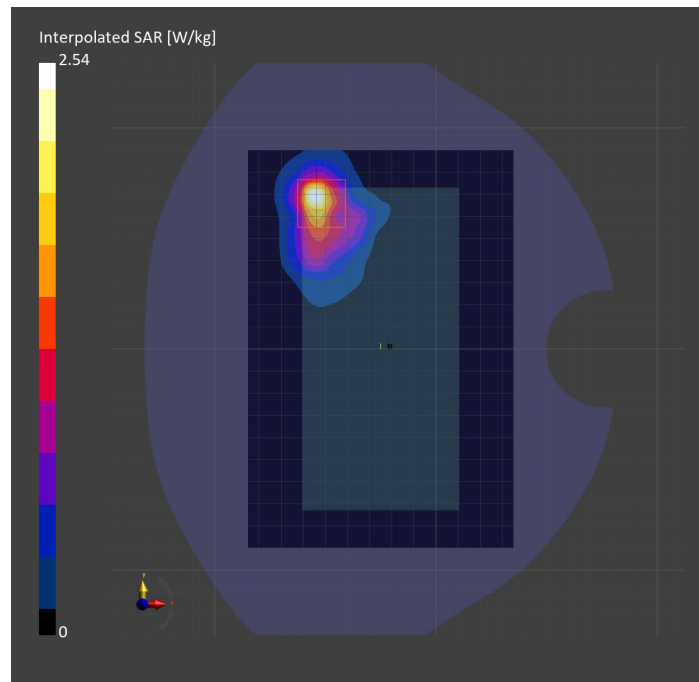
Probe   Calibration Date	EX3DV4 - SN7463   2023-04-19	Phantom	Twin-SAM V8.0 (30deg probe tilt)
DAE   Calibration Date	DAE4 Sn1673   2023-05-12	TSL Type	HBBL-600-10000
Software Version	16.2.4.2524		

## Scan Setup

	Area Scan	Zoom Scan
Grid Extents [mm]	120.0 x 180.0	30.0 x 30.0 x 28.0
Grid Steps [mm]	10.0 x 10.0	5.0 x 5.0 x 1.4
Sensor Surface [mm]	3.0	1.4
Graded Grid	N/A	Yes
M2/M1 [%]		70.5
Dist 3dB Peak [mm]		6.5

## Measurement Results

	Area Scan	Zoom Scan
psSAR1g [W/Kg]	0.760	<b>0.813</b>
psSAR10g [W/Kg]	0.285	<b>0.284</b>
Power Drift [dB]	N/A	0.02





# Measurement Report for Band n77: 5G NR (DFT-s-OFDM, 50% RB, 100 MHz, QPSK, 30 kHz) RBPosition:Mid AntennaCfg:SISO, EDGE RIGHT

## Exposure Conditions

Band	Band n77	TSL Permittivity	37.9
Frequency [MHz]   Channel Number	3858.000   657200	TSL Conductivity [S/m]	3.13
Group   UID	5G NR FR1 TDD   10917-AAD	Phantom Section   TSL	Flat   HSL
Conversion Factor	6.15	Test Distance [mm]	5.00

## Hardware Setup

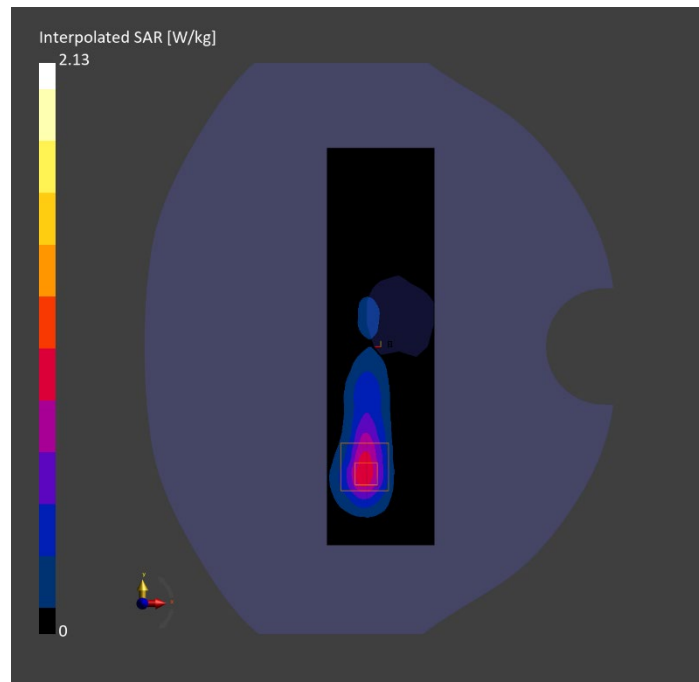
Probe   Calibration Date	EX3DV4 - SN7463   2023-04-19	Phantom	Twin-SAM V8.0 (30deg probe tilt)
DAE   Calibration Date	DAE4 Sn1673   2023-05-12	TSL Type	HBBL-600-10000
Software Version	16.2.4.2524		

## Scan Setup

	Area Scan	Zoom Scan
Grid Extents [mm]	48.6 x 180.0	30.0 x 30.0 x 28.0
Grid Steps [mm]	8.1 x 10.0	5.0 x 5.0 x 1.4
Sensor Surface [mm]	3.0	1.4
Graded Grid	N/A	Yes
M2/M1 [%]		72.5
Dist 3dB Peak [mm]		7.1

## Measurement Results

	Area Scan	Zoom Scan
psSAR1g [W/Kg]	0.735	<b>0.740</b>
psSAR10g [W/Kg]	0.283	<b>0.285</b>
Power Drift [dB]	N/A	0.01



THIS PAGE INTENTIONALLY LEFT BLANK

THIS PAGE INTENTIONALLY LEFT BLANK

THIS PAGE INTENTIONALLY LEFT BLANK

# Measurement Report for WLAN 2.4GHz: IEEE 802.11b WiFi 2.4 GHz (DSSS, 1 Mbps, 99pc duty cycle), BACK

## Exposure Conditions

Band	WLAN 2.4GHz	TSL Permittivity	40.7
Frequency [MHz]   Channel Number	2417.000   2	TSL Conductivity [S/m]	1.75
Group   UID	WLAN   10415-AAA	Phantom Section   TSL	Flat   HSL
Conversion Factor	7.64	Test Distance [mm]	5.00

## Hardware Setup

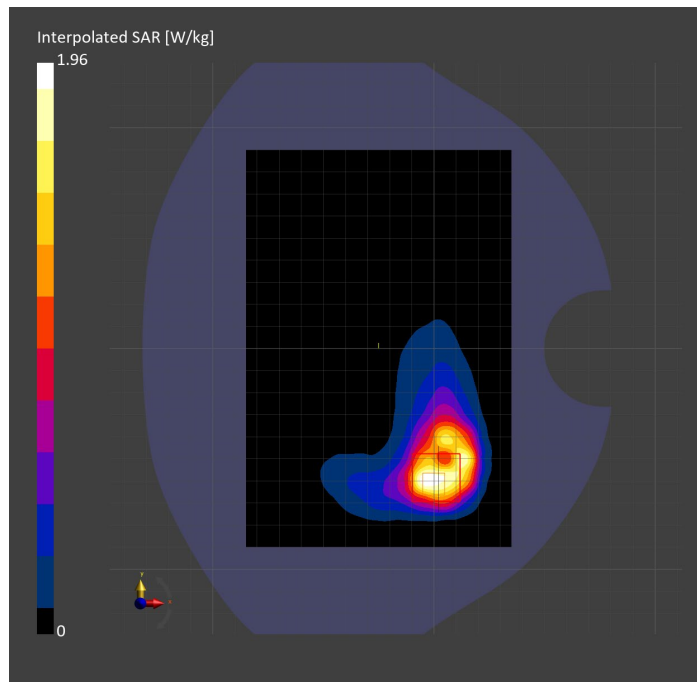
Probe   Calibration Date	EX3DV4 - SN7587   2023-04-18	Phantom	Twin-SAM V8.0 (30deg probe tilt)
DAE   Calibration Date	DAE4 Sn1239   2023-03-16	TSL Type	HBBL-600-10000
Software Version	16.2.4.2524		

## Scan Setup

	Area Scan	Zoom Scan
Grid Extents [mm]	120.0 x 180.0	30.0 x 30.0 x 30.0
Grid Steps [mm]	10.0 x 10.0	5.0 x 5.0 x 1.5
Sensor Surface [mm]	3.0	1.4
Graded Grid	N/A	Yes
M2/M1 [%]		72.1
Dist 3dB Peak [mm]		6.8

## Measurement Results

	Area Scan	Zoom Scan
psSAR1g [W/Kg]	0.711	<b>0.768</b>
psSAR10g [W/Kg]	0.365	<b>0.323</b>
Power Drift [dB]	N/A	-0.18



# Measurement Report for WLAN 2.4GHz: IEEE 802.11b WiFi 2.4 GHz (DSSS, 1 Mbps, 99pc duty cycle), CHEEK

## Exposure Conditions

Band	WLAN 2.4GHz	TSL Permittivity	37.5
Frequency [MHz]   Channel Number	2462.000   11	TSL Conductivity [S/m]	1.80
Group   UID	WLAN   10415-AAA	Phantom Section   TSL	LeftHead   HSL
Conversion Factor	7.33	Test Distance [mm]	0.00

## Hardware Setup

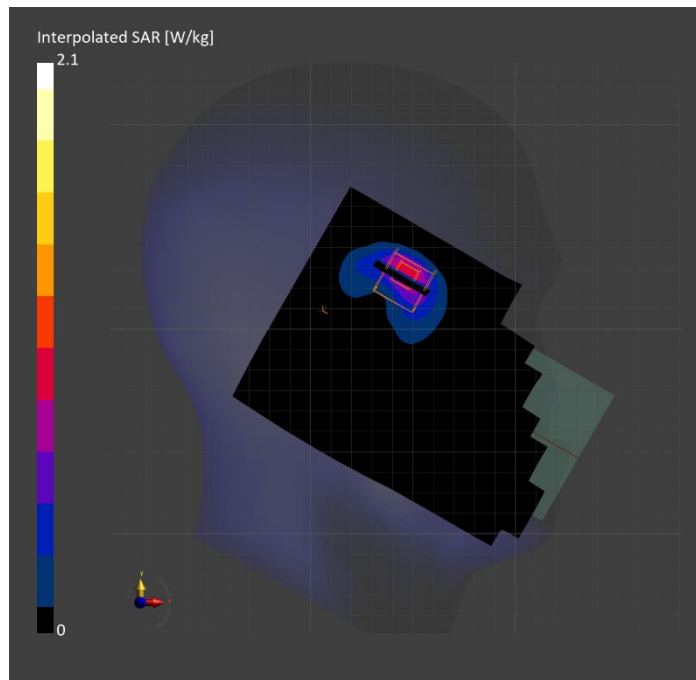
Probe   Calibration Date	EX3DV4 - SN3772   2023-02-13	Phantom	Twin-SAM V8.0 (30deg probe tilt)
DAE   Calibration Date	DAE4 Sn1359   2023-01-24	TSL Type	HBBL-600-10000
Software Version	16.2.4.2524		

## Scan Setup

	Area Scan	Zoom Scan
Grid Extents [mm]	120.0 x 180.0	30.0 x 30.0 x 30.0
Grid Steps [mm]	10.0 x 10.0	5.0 x 5.0 x 1.5
Sensor Surface [mm]	3.0	1.4
Graded Grid	N/A	Yes
M2/M1 [%]		74.9
Dist 3dB Peak [mm]		6.2

## Measurement Results

	Area Scan	Zoom Scan
psSAR1g [W/Kg]	0.729	<b>0.821</b>
psSAR10g [W/Kg]	0.339	<b>0.341</b>
Power Drift [dB]	N/A	0.02



# Measurement Report for WLAN 2.4GHz: IEEE 802.11b WiFi 2.4 GHz (DSSS, 1 Mbps, 99pc duty cycle), EDGE RIGHT

## Exposure Conditions

Band	WLAN 2.4GHz	TSL Permittivity	37.5
Frequency [MHz]   Channel Number	2462.000   11	TSL Conductivity [S/m]	1.80
Group   UID	WLAN   10415-AAA	Phantom Section   TSL	Flat   HSL
Conversion Factor	7.33	Test Distance [mm]	5.00

## Hardware Setup

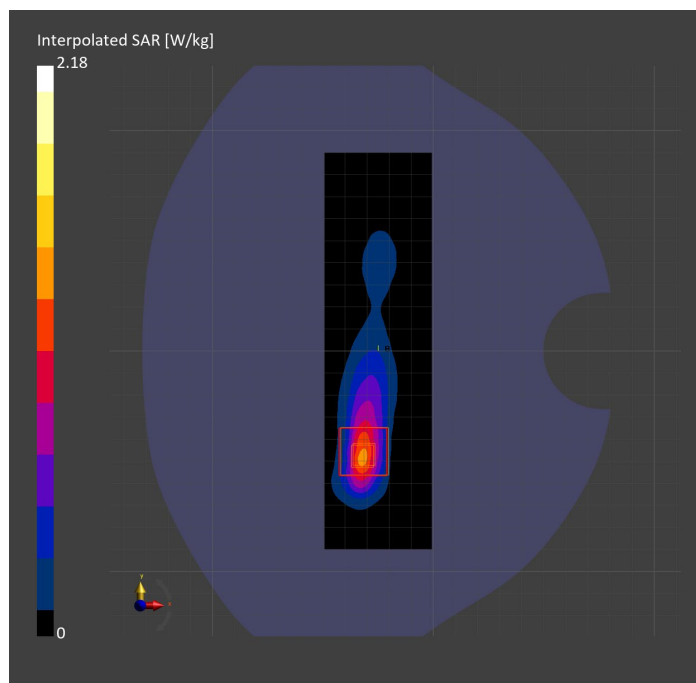
Probe   Calibration Date	EX3DV4 - SN3772   2023-02-13	Phantom	Twin-SAM V8.0 (30deg probe tilt)
DAE   Calibration Date	DAE4 Sn1359   2023-01-24	TSL Type	HBBL-600-10000
Software Version	16.2.4.2524		

## Scan Setup

	Area Scan	Zoom Scan
Grid Extents [mm]	48.6 x 180.0	30.0 x 30.0 x 30.0
Grid Steps [mm]	8.1 x 10.0	5.0 x 5.0 x 1.5
Sensor Surface [mm]	3.0	1.4
Graded Grid	N/A	Yes
M2/M1 [%]		78.7
Dist 3dB Peak [mm]		6.8

## Measurement Results

	Area Scan	Zoom Scan
psSAR1g [W/Kg]	0.965	<b>0.954</b>
psSAR10g [W/Kg]	0.406	<b>0.389</b>
Power Drift [dB]	N/A	-0.03



# Measurement Report for U-NII-1, U-NII-2A: IEEE 802.11n (HT Greenfield, 13.5 Mbps, BPSK), BACK

## Exposure Conditions

<b>Band</b>	U-NII-1, U-NII-2A	<b>TSL Permittivity</b>	36.9
<b>Frequency [MHz]   Channel Number</b>	5270.000   54	<b>TSL Conductivity [S/m]</b>	4.95
<b>Group   UID</b>	WLAN   10114-CAE	<b>Phantom Section   TSL</b>	Flat   HSL
<b>Conversion Factor</b>	5.14	<b>Test Distance [mm]</b>	5.00

## Hardware Setup

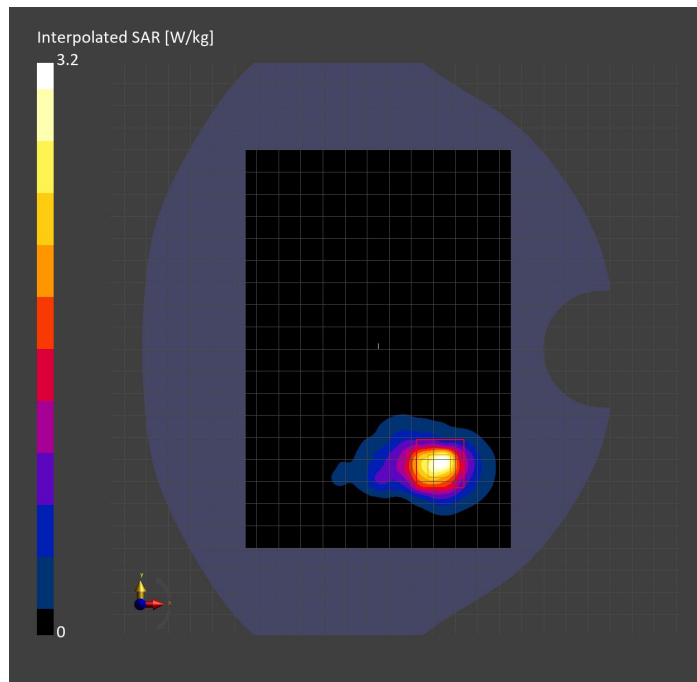
<b>Probe   Calibration Date</b>	EX3DV4 - SN3773   2023-02-13	<b>Phantom</b>	Twin-SAM V5.0 (30deg probe tilt)
<b>DAE   Calibration Date</b>	DAE4 Sn1258   2023-03-16	<b>TSL Type</b>	HBBL-600-10000
<b>Software Version</b>	16.2.4.2524		

## Scan Setup

	Area Scan	Zoom Scan
<b>Grid Extents [mm]</b>	120.0 x 180.0	24.0 x 24.0 x 22.0
<b>Grid Steps [mm]</b>	10.0 x 10.0	4.0 x 4.0 x 1.4
<b>Sensor Surface [mm]</b>	3.0	1.4
<b>Graded Grid</b>	N/A	Yes
<b>M2/M1 [%]</b>		63.7
<b>Dist 3dB Peak [mm]</b>		5.6

## Measurement Results

	Area Scan	Zoom Scan
<b>psSAR1g [W/Kg]</b>	0.652	<b>0.779</b>
<b>psSAR10g [W/Kg]</b>	0.227	<b>0.227</b>
<b>Power Drift [dB]</b>	N/A	0.15





# Measurement Report for U-NII-1, U-NII-2A: IEEE 802.11n (HT Greenfield, 13.5 Mbps, BPSK), EDGE LEFT

## Exposure Conditions

Band	U-NII-1, U-NII-2A	TSL Permittivity	36.9
Frequency [MHz]   Channel Number	5270.000   54	TSL Conductivity [S/m]	4.95
Group   UID	WLAN   10114-CAE	Phantom Section   TSL	Flat   HSL
Conversion Factor	5.14	Test Distance [mm]	5.00

## Hardware Setup

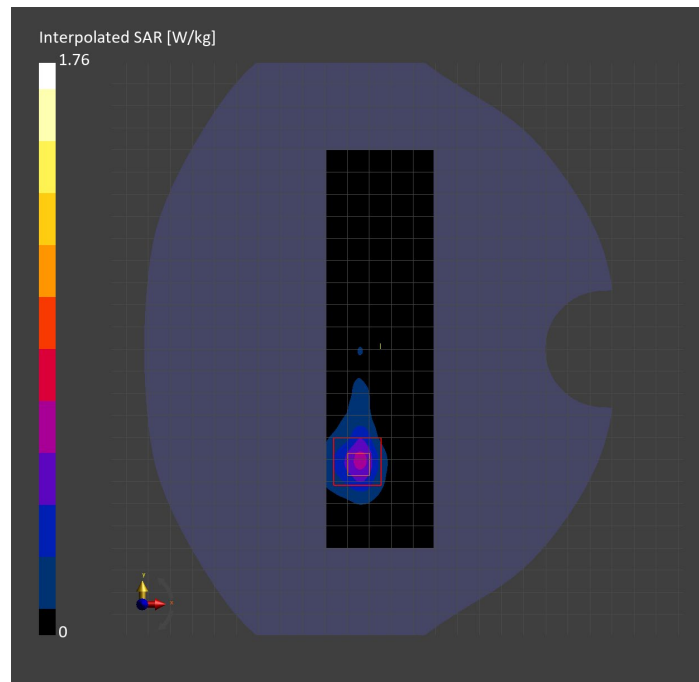
Probe   Calibration Date	EX3DV4 - SN3773   2023-02-13	Phantom	Twin-SAM V5.0 (30deg probe tilt)
DAE   Calibration Date	DAE4 Sn1258   2023-03-16	TSL Type	HBBL-600-10000
Software Version	16.2.4.2524		

## Scan Setup

	Area Scan	Zoom Scan	Secondary Zoom Scan
Grid Extents [mm]	48.6 x 180.0	24.0 x 24.0 x 22.0	24.0 x 24.0 x 22.0
Grid Steps [mm]	8.1 x 10.0	4.0 x 4.0 x 1.4	4.0 x 4.0 x 1.4
Sensor Surface [mm]	3.0	1.4	1.4
Graded Grid	N/A	Yes	Yes
M2/M1 [%]		61.6	62.0
Dist 3dB Peak [mm]		7.6	7.6

## Measurement Results

	Area Scan	Zoom Scan	Secondary Zoom Scan
psSAR1g [W/Kg]	0.442	<b>0.440</b>	<b>0.465</b>
psSAR10g [W/Kg]	0.153	<b>0.143</b>	<b>0.152</b>
Power Drift [dB]	N/A	0.22	0.12



# Measurement Report for U-NII-1, U-NII-2A: IEEE 802.11n (HT Greenfield, 13.5 Mbps, BPSK), CHEEK

## Exposure Conditions

Band	U-NII-1, U-NII-2A	TSL Permittivity	34.5
Frequency [MHz]   Channel Number	5270.000   54	TSL Conductivity [S/m]	4.74
Group   UID	WLAN   10114-CAE	Phantom Section   TSL	RightHead   HSL
Conversion Factor	5.14	Test Distance [mm]	0.00

## Hardware Setup

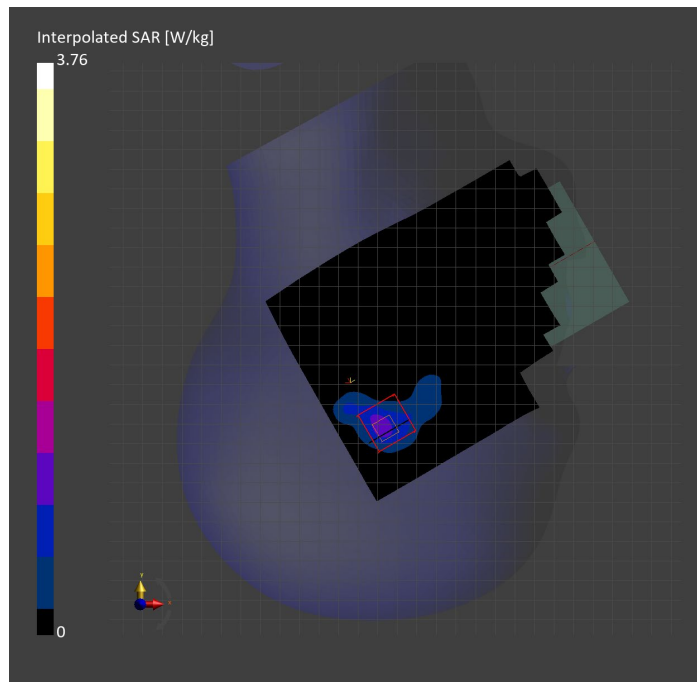
Probe   Calibration Date	EX3DV4 - SN3773   2023-02-13	Phantom	Twin-SAM V5.0 (30deg probe tilt)
DAE   Calibration Date	DAE4 Sn1258   2023-03-16	TSL Type	HBBL-600-10000
Software Version	16.2.4.2524		

## Scan Setup

	Area Scan	Zoom Scan
Grid Extents [mm]	120.0 x 180.0	24.0 x 24.0 x 22.0
Grid Steps [mm]	10.0 x 10.0	4.0 x 4.0 x 1.4
Sensor Surface [mm]	3.0	1.4
Graded Grid	N/A	Yes
M2/M1 [%]		56.9
Dist 3dB Peak [mm]		5.7

## Measurement Results

	Area Scan	Zoom Scan
psSAR1g [W/Kg]	0.804	<b>0.848</b>
psSAR10g [W/Kg]	0.285	<b>0.323</b>
Power Drift [dB]	N/A	-0.00



# Measurement Report for WLAN 5GHz: IEEE 802.11ac WiFi (80MHz, MCS0, 99pc duty cycle), BACK

## Exposure Conditions

Band	WLAN 5GHz	TSL Permittivity	37.2
Frequency [MHz]   Channel Number	5610.000   122	TSL Conductivity [S/m]	4.81
Group   UID	WLAN   10544-AAD	Phantom Section   TSL	Flat   HSL
Conversion Factor	4.46	Test Distance [mm]	5.00

## Hardware Setup

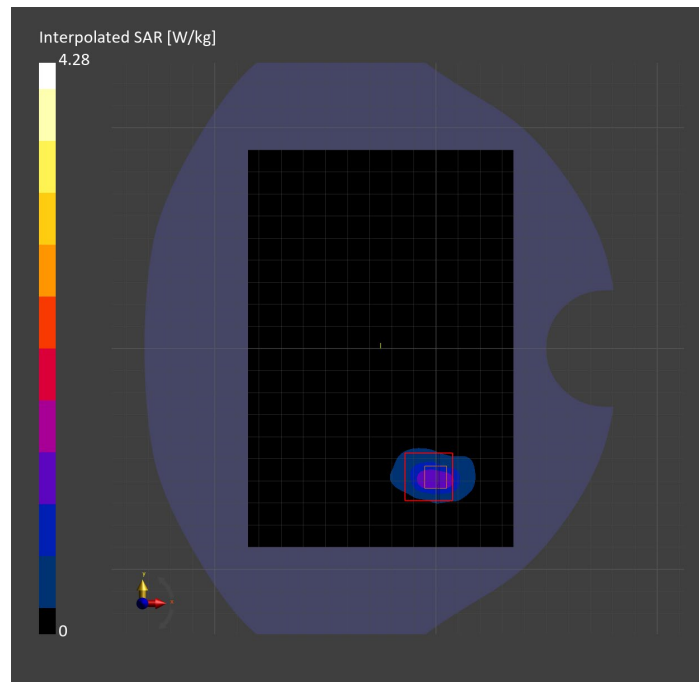
Probe   Calibration Date	EX3DV4 - SN7585   2023-04-18	Phantom	Twin-SAM V5.0 (30deg probe tilt)
DAE   Calibration Date	DAE4 Sn1259   2023-03-13	TSL Type	HBBL-600-10000
Software Version	16.2.4.2524		

## Scan Setup

	Area Scan	Zoom Scan	Secondary Zoom Scan
Grid Extents [mm]	120.0 x 180.0	24.0 x 24.0 x 22.0	24.0 x 24.0 x 22.0
Grid Steps [mm]	10.0 x 10.0	4.0 x 4.0 x 1.4	4.0 x 4.0 x 1.4
Sensor Surface [mm]	3.0	1.4	1.4
Graded Grid	N/A	Yes	Yes
M2/M1 [%]		62.9	62.9
Dist 3dB Peak [mm]		6.5	6.4

## Measurement Results

	Area Scan	Zoom Scan	Secondary Zoom Scan
psSAR1g [W/Kg]	0.970	<b>1.02</b>	<b>1.04</b>
psSAR10g [W/Kg]	0.311	<b>0.309</b>	<b>0.316</b>
Power Drift [dB]	N/A	-1.60	-0.57



# Measurement Report for WLAN 5GHz: IEEE 802.11ac WiFi (80MHz, MCS0, 99pc duty cycle), CHEEK

## Exposure Conditions

<b>Band</b>	WLAN 5GHz	<b>TSL Permittivity</b>	35.6
<b>Frequency [MHz]   Channel Number</b>	5610.000   122	<b>TSL Conductivity [S/m]</b>	4.87
<b>Group   UID</b>	WLAN   10544-AAD	<b>Phantom Section   TSL</b>	RightHead   HSL
<b>Conversion Factor</b>	4.46	<b>Test Distance [mm]</b>	0.00

## Hardware Setup

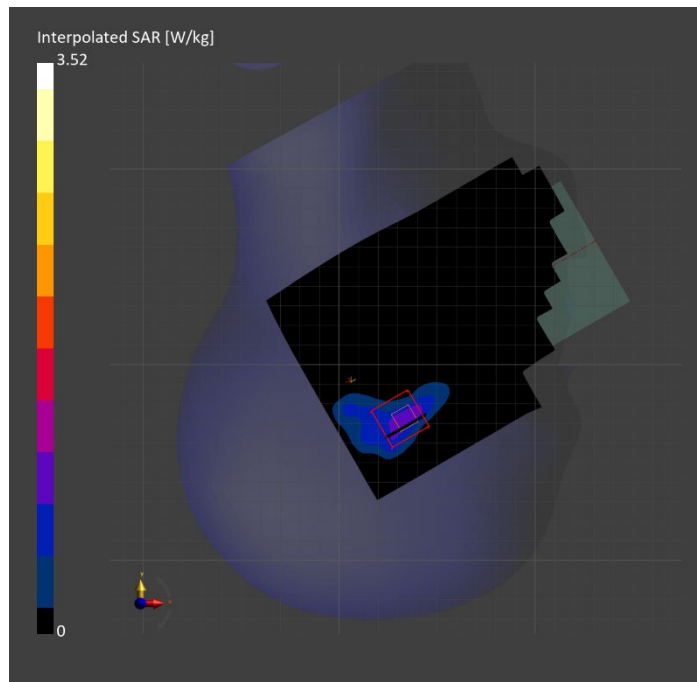
<b>Probe   Calibration Date</b>	EX3DV4 - SN7585   2023-04-18	<b>Phantom</b>	Twin-SAM V5.0 (30deg probe tilt)
<b>DAE   Calibration Date</b>	DAE4 Sn1797   2023-04-03	<b>TSL Type</b>	HBBL-600-10000
<b>Software Version</b>	16.2.4.2524		

## Scan Setup

	Area Scan	Zoom Scan
<b>Grid Extents [mm]</b>	120.0 x 180.0	24.0 x 24.0 x 22.0
<b>Grid Steps [mm]</b>	10.0 x 10.0	4.0 x 4.0 x 1.4
<b>Sensor Surface [mm]</b>	3.0	1.4
<b>Graded Grid</b>	N/A	Yes
<b>M2/M1 [%]</b>		56.5
<b>Dist 3dB Peak [mm]</b>		5.7

## Measurement Results

	Area Scan	Zoom Scan
<b>psSAR1g [W/Kg]</b>	0.746	<b>0.821</b>
<b>psSAR10g [W/Kg]</b>	0.284	<b>0.300</b>
<b>Power Drift [dB]</b>	N/A	-0.08



# Measurement Report for WLAN 5GHz: IEEE 802.11ac WiFi (80MHz, MCS0, 99pc duty cycle), EDGE LEFT

## Exposure Conditions

Band	WLAN 5GHz	TSL Permittivity	35.2
Frequency [MHz]   Channel Number	5610.000   122	TSL Conductivity [S/m]	5.17
Group   UID	WLAN   10544-AAD	Phantom Section   TSL	Flat   HSL
Conversion Factor	4.46	Test Distance [mm]	5.00

## Hardware Setup

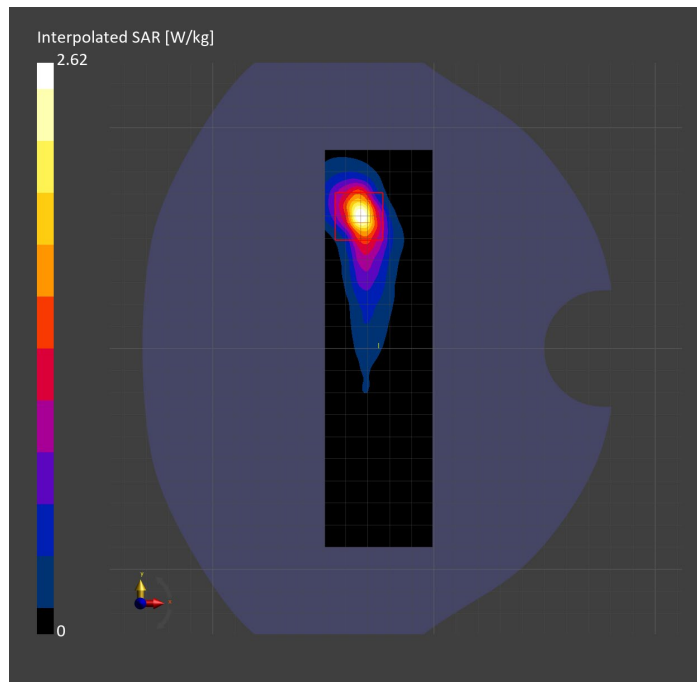
Probe   Calibration Date	EX3DV4 - SN7585   2023-04-18	Phantom	Twin-SAM V5.0 (30deg probe tilt)
DAE   Calibration Date	DAE4 Sn1797   2023-04-03	TSL Type	HBBL-600-10000
Software Version	16.2.4.2524		

## Scan Setup

	Area Scan	Zoom Scan
Grid Extents [mm]	48.6 x 180.0	24.0 x 24.0 x 22.0
Grid Steps [mm]	8.1 x 10.0	4.0 x 4.0 x 1.4
Sensor Surface [mm]	3.0	1.4
Graded Grid	N/A	Yes
M2/M1 [%]		62.1
Dist 3dB Peak [mm]		6.5

## Measurement Results

	Area Scan	Zoom Scan
psSAR1g [W/Kg]	0.605	<b>0.637</b>
psSAR10g [W/Kg]	0.190	<b>0.196</b>
Power Drift [dB]	N/A	-0.07



# Measurement Report for WLAN 5GHz: IEEE 802.11ac WiFi (80MHz, MCS0, 99pc duty cycle), BACK

## Exposure Conditions

Band	WLAN 5GHz	TSL Permittivity	35.7
Frequency [MHz]   Channel Number	5775.000   155	TSL Conductivity [S/m]	5.33
Group   UID	WLAN   10544-AAD	Phantom Section   TSL	Flat   HSL
Conversion Factor	5.15	Test Distance [mm]	5.00

## Hardware Setup

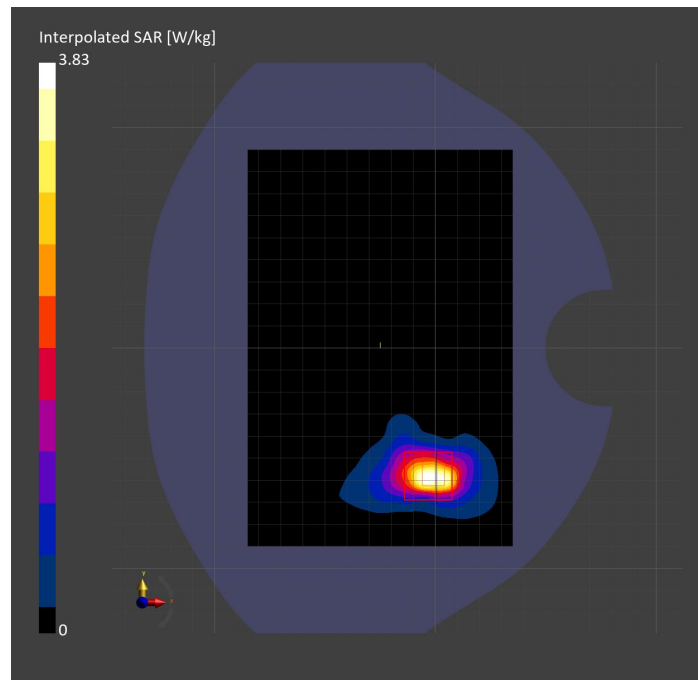
Probe   Calibration Date	EX3DV4 - SN3902   2023-03-17	Phantom	Twin-SAM V5.0 (30deg probe tilt)
DAE   Calibration Date	DAE4 Sn1439   2023-03-16	TSL Type	HBBL-600-10000
Software Version	16.2.4.2524		

## Scan Setup

	Area Scan	Zoom Scan
Grid Extents [mm]	120.0 x 180.0	24.0 x 24.0 x 22.0
Grid Steps [mm]	10.0 x 10.0	4.0 x 4.0 x 1.4
Sensor Surface [mm]	3.0	1.4
Graded Grid	N/A	Yes
M2/M1 [%]		62.9
Dist 3dB Peak [mm]		6.4

## Measurement Results

	Area Scan	Zoom Scan
psSAR1g [W/Kg]	0.925	<b>0.947</b>
psSAR10g [W/Kg]	0.308	<b>0.301</b>
Power Drift [dB]	N/A	0.05



# Measurement Report for WLAN 5GHz: IEEE 802.11ac WiFi (80MHz, MCS0, 99pc duty cycle), CHEEK

## Exposure Conditions

Band	WLAN 5GHz	TSL Permittivity	35.8
Frequency [MHz]   Channel Number	5775.000   155	TSL Conductivity [S/m]	5.30
Group   UID	WLAN   10544-AAD	Phantom Section   TSL	RightHead   HSL
Conversion Factor	5.15	Test Distance [mm]	0.00

## Hardware Setup

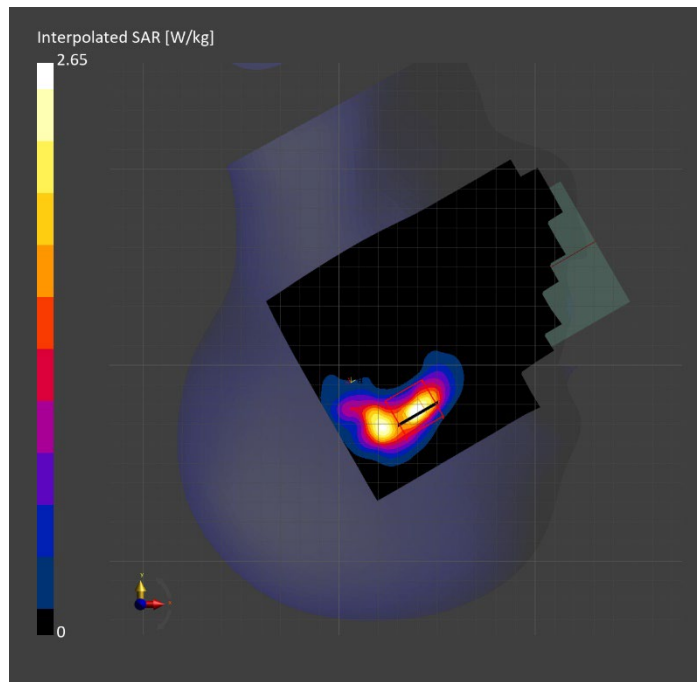
Probe   Calibration Date	EX3DV4 - SN3902   2023-03-17	Phantom	Twin-SAM V5.0 (30deg probe tilt)
DAE   Calibration Date	DAE4 Sn1439   2023-03-16	TSL Type	HBBL-600-10000
Software Version	16.2.4.2524		

## Scan Setup

	Area Scan	Zoom Scan
Grid Extents [mm]	120.0 x 180.0	24.0 x 24.0 x 22.0
Grid Steps [mm]	10.0 x 10.0	4.0 x 4.0 x 1.4
Sensor Surface [mm]	3.0	1.4
Graded Grid	N/A	Yes
M2/M1 [%]		64.4
Dist 3dB Peak [mm]		5.8

## Measurement Results

	Area Scan	Zoom Scan
psSAR1g [W/Kg]	0.665	<b>0.689</b>
psSAR10g [W/Kg]	0.242	<b>0.227</b>
Power Drift [dB]	N/A	0.00



# Measurement Report for WLAN 5GHz: IEEE 802.11ac WiFi (80MHz, MCS0, 99pc duty cycle), EDGE LEFT

## Exposure Conditions

Band	WLAN 5GHz	TSL Permittivity	34.3
Frequency [MHz]   Channel Number	5775.000   155	TSL Conductivity [S/m]	5.10
Group   UID	WLAN   10544-AAD	Phantom Section   TSL	Flat   HSL
Conversion Factor	5.15	Test Distance [mm]	5.00

## Hardware Setup

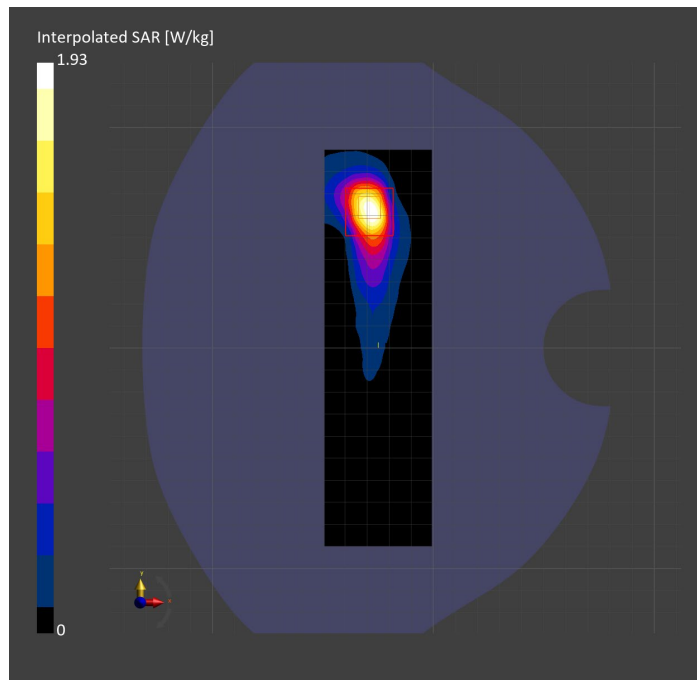
Probe   Calibration Date	EX3DV4 - SN3902   2023-03-17	Phantom	Twin-SAM V5.0 (30deg probe tilt)
DAE   Calibration Date	DAE4 Sn1439   2023-03-16	TSL Type	HBBL-600-10000
Software Version	16.2.4.2524		

## Scan Setup

	Area Scan	Zoom Scan
Grid Extents [mm]	48.6 x 180.0	24.0 x 24.0 x 22.0
Grid Steps [mm]	8.1 x 10.0	4.0 x 4.0 x 1.4
Sensor Surface [mm]	3.0	1.4
Graded Grid	N/A	Yes
M2/M1 [%]		62.4
Dist 3dB Peak [mm]		6.9

## Measurement Results

	Area Scan	Zoom Scan
psSAR1g [W/Kg]	0.466	<b>0.481</b>
psSAR10g [W/Kg]	0.156	<b>0.150</b>
Power Drift [dB]	N/A	0.08





# Measurement Report for ISM 2.4 GHz Band: IEEE 802.15.1 Bluetooth (GFSK, DH5), BACK

## Exposure Conditions

Band	ISM 2.4 GHz Band	TSL Permittivity	40.9
Frequency [MHz]   Channel Number	2441.000   39	TSL Conductivity [S/m]	1.86
Group   UID	Bluetooth   10032-CAA	Phantom Section   TSL	Flat   HSL
Conversion Factor	7.64	Test Distance [mm]	5.00

## Hardware Setup

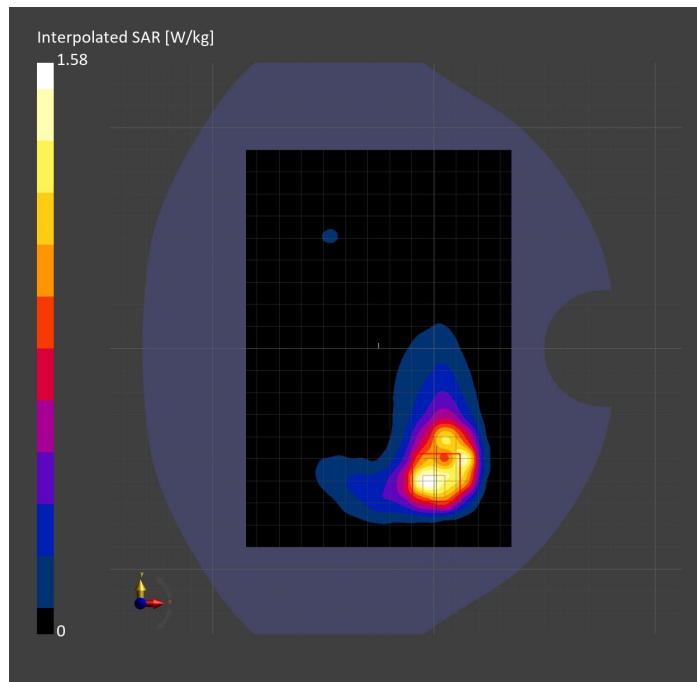
Probe   Calibration Date	EX3DV4 - SN7587   2023-04-18	Phantom	Twin-SAM V8.0 (30deg probe tilt)
DAE   Calibration Date	DAE4 Sn1239   2023-03-16	TSL Type	HBBL-600-10000
Software Version	16.2.4.2524		

## Scan Setup

	Area Scan	Zoom Scan
Grid Extents [mm]	120.0 x 180.0	30.0 x 30.0 x 30.0
Grid Steps [mm]	10.0 x 10.0	5.0 x 5.0 x 1.5
Sensor Surface [mm]	3.0	1.4
Graded Grid	N/A	Yes
M2/M1 [%]		73.0
Dist 3dB Peak [mm]		7.3

## Measurement Results

	Area Scan	Zoom Scan
psSAR1g [W/Kg]	0.560	<b>0.634</b>
psSAR10g [W/Kg]	0.289	<b>0.271</b>
Power Drift [dB]	N/A	0.16



# Measurement Report for ISM 2.4 GHz Band: IEEE 802.15.1 Bluetooth (GFSK, DH5), CHEEK

## Exposure Conditions

<b>Band</b>	ISM 2.4 GHz Band	<b>TSL Permittivity</b>	37.4
<b>Frequency [MHz]   Channel Number</b>	2441.000   39	<b>TSL Conductivity [S/m]</b>	1.86
<b>Group   UID</b>	Bluetooth   10032-CAA	<b>Phantom Section   TSL</b>	LeftHead   HSL
<b>Conversion Factor</b>	7.33	<b>Test Distance [mm]</b>	0.00

## Hardware Setup

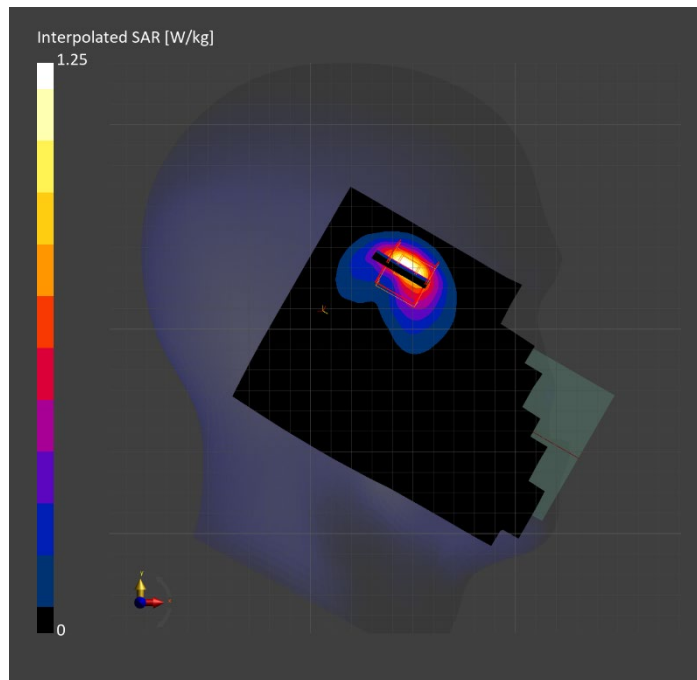
<b>Probe   Calibration Date</b>	EX3DV4 - SN3772   2023-02-13	<b>Phantom</b>	Twin-SAM V8.0 (30deg probe tilt)
<b>DAE   Calibration Date</b>	DAE4 Sn1359   2023-01-24	<b>TSL Type</b>	HBBL-600-10000
<b>Software Version</b>	16.2.4.2524		

## Scan Setup

	Area Scan	Zoom Scan
<b>Grid Extents [mm]</b>	120.0 x 180.0	30.0 x 30.0 x 30.0
<b>Grid Steps [mm]</b>	10.0 x 10.0	5.0 x 5.0 x 1.5
<b>Sensor Surface [mm]</b>	3.0	1.4
<b>Graded Grid</b>	N/A	Yes
<b>M2/M1 [%]</b>		76.0
<b>Dist 3dB Peak [mm]</b>		6.1

## Measurement Results

	Area Scan	Zoom Scan
<b>psSAR1g [W/Kg]</b>	0.491	<b>0.496</b>
<b>psSAR10g [W/Kg]</b>	0.209	<b>0.203</b>
<b>Power Drift [dB]</b>	N/A	0.15



# Measurement Report for ISM 2.4 GHz Band: IEEE 802.15.1 Bluetooth (GFSK, DH5), EDGE RIGHT

## Exposure Conditions

<b>Band</b>	ISM 2.4 GHz Band	<b>TSL Permittivity</b>	37.4
<b>Frequency [MHz]   Channel Number</b>	2441.000   39	<b>TSL Conductivity [S/m]</b>	1.86
<b>Group   UID</b>	Bluetooth   10032-CAA	<b>Phantom Section   TSL</b>	Flat   HSL
<b>Conversion Factor</b>	7.33	<b>Test Distance [mm]</b>	5.00

## Hardware Setup

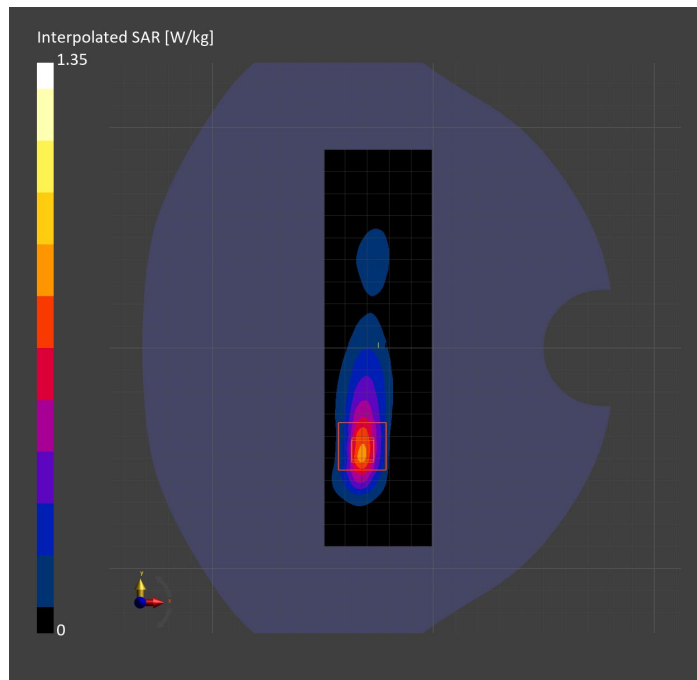
<b>Probe   Calibration Date</b>	EX3DV4 - SN3772   2023-02-13	<b>Phantom</b>	Twin-SAM V8.0 (30deg probe tilt)
<b>DAE   Calibration Date</b>	DAE4 Sn1359   2023-01-24	<b>TSL Type</b>	HBBL-600-10000
<b>Software Version</b>	16.2.4.2524		

## Scan Setup

	Area Scan	Zoom Scan
<b>Grid Extents [mm]</b>	48.6 x 180.0	30.0 x 30.0 x 30.0
<b>Grid Steps [mm]</b>	8.1 x 10.0	5.0 x 5.0 x 1.5
<b>Sensor Surface [mm]</b>	3.0	1.4
<b>Graded Grid</b>	N/A	Yes
<b>M2/M1 [%]</b>		78.2
<b>Dist 3dB Peak [mm]</b>		6.0

## Measurement Results

	Area Scan	Zoom Scan
<b>psSAR1g [W/Kg]</b>	0.594	<b>0.582</b>
<b>psSAR10g [W/Kg]</b>	0.247	<b>0.235</b>
<b>Power Drift [dB]</b>	N/A	-0.07



# Measurement Report for Custom Band: IEEE 802.15.1 Bluetooth (GFSK, DH5), CHEEK

## Exposure Conditions

<b>Band</b>	Custom Band	<b>TSL Permittivity</b>	34.6
<b>Frequency [MHz]   Channel Number</b>	5230.000   5230000	<b>TSL Conductivity [S/m]</b>	4.70
<b>Group   UID</b>	CW   10032-CAA	<b>Phantom Section   TSL</b>	RightHead   HSL
<b>Conversion Factor</b>	5.14	<b>Test Distance [mm]</b>	0.00

## Hardware Setup

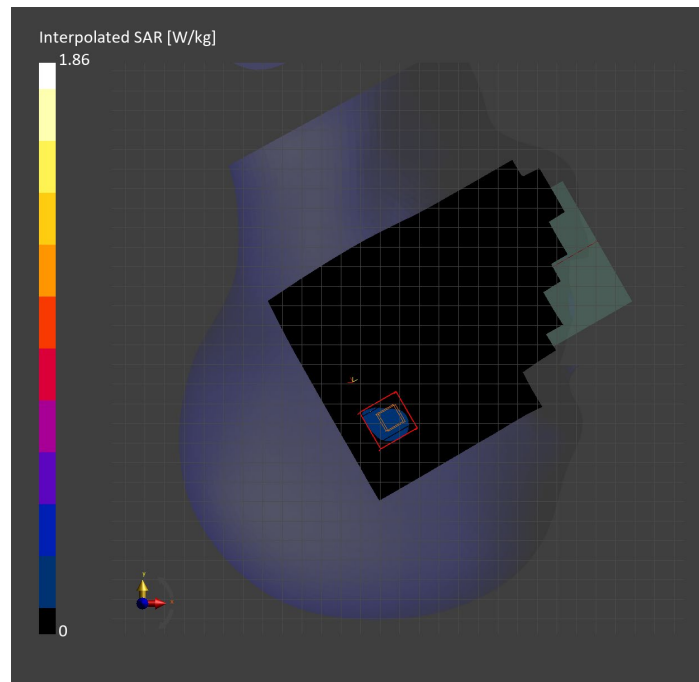
<b>Probe   Calibration Date</b>	EX3DV4 - SN3773   2023-02-13	<b>Phantom</b>	Twin-SAM V5.0 (30deg probe tilt)
<b>DAE   Calibration Date</b>	DAE4 Sn1258   2023-03-16	<b>TSL Type</b>	HBBL-600-10000
<b>Software Version</b>	16.2.4.2524		

## Scan Setup

	Area Scan	Zoom Scan	Secondary Zoom Scan
<b>Grid Extents [mm]</b>	120.0 x 180.0	24.0 x 24.0 x 22.0	24.0 x 24.0 x 22.0
<b>Grid Steps [mm]</b>	10.0 x 10.0	4.0 x 4.0 x 1.4	4.0 x 4.0 x 1.4
<b>Sensor Surface [mm]</b>	3.0	1.4	1.4
<b>Graded Grid</b>	N/A	Yes	Yes
<b>M2/M1 [%]</b>		58.5	60.0
<b>Dist 3dB Peak [mm]</b>		5.2	5.2

## Measurement Results

	Area Scan	Zoom Scan	Secondary Zoom Scan
<b>psSAR1g [W/Kg]</b>	0.182	<b>0.202</b>	<b>0.197</b>
<b>psSAR10g [W/Kg]</b>	0.066	<b>0.076</b>	<b>0.071</b>
<b>Power Drift [dB]</b>	N/A	-0.38	-0.04



# Measurement Report for Custom Band: IEEE 802.15.1 Bluetooth (GFSK, DH5), BACK

## Exposure Conditions

Band	Custom Band	TSL Permittivity	34.6
Frequency [MHz]   Channel Number	5230.000   5230000	TSL Conductivity [S/m]	4.70
Group   UID	CW   10032-CAA	Phantom Section   TSL	Flat   HSL
Conversion Factor	5.14	Test Distance [mm]	5.00

## Hardware Setup

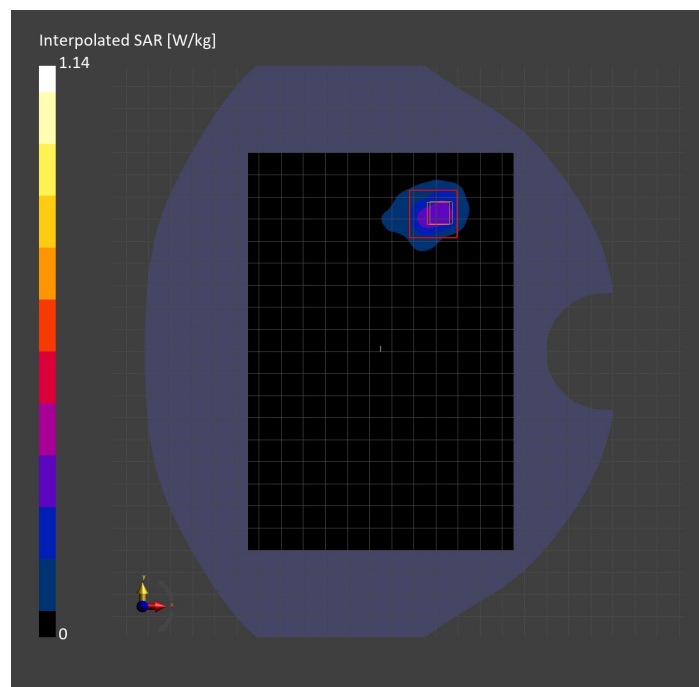
Probe   Calibration Date	EX3DV4 - SN3773   2023-02-13	Phantom	Twin-SAM V5.0 (30deg probe tilt)
DAE   Calibration Date	DAE4 Sn1258   2023-03-16	TSL Type	HBBL-600-10000
Software Version	16.2.4.2524		

## Scan Setup

	Area Scan	Zoom Scan	Secondary Zoom Scan
Grid Extents [mm]	120.0 x 180.0	24.0 x 24.0 x 22.0	24.0 x 24.0 x 22.0
Grid Steps [mm]	10.0 x 10.0	4.0 x 4.0 x 1.4	4.0 x 4.0 x 1.4
Sensor Surface [mm]	3.0	1.4	1.4
Graded Grid	N/A	Yes	Yes
M2/M1 [%]		61.0	61.5
Dist 3dB Peak [mm]		7.2	6.9

## Measurement Results

	Area Scan	Zoom Scan	Secondary Zoom Scan
psSAR1g [W/Kg]	0.260	<b>0.291</b>	<b>0.287</b>
psSAR10g [W/Kg]	0.092	<b>0.095</b>	<b>0.095</b>
Power Drift [dB]	N/A	-0.34	-0.12



# Measurement Report for Custom Band: IEEE 802.15.1 Bluetooth (GFSK, DH5), EDGE LEFT

## Exposure Conditions

Band	Custom Band	TSL Permittivity	36.2
Frequency [MHz]   Channel Number	5230.000   5230000	TSL Conductivity [S/m]	4.69
Group   UID	CW   10032-CAA	Phantom Section   TSL	Flat   HSL
Conversion Factor	5.59	Test Distance [mm]	5.00

## Hardware Setup

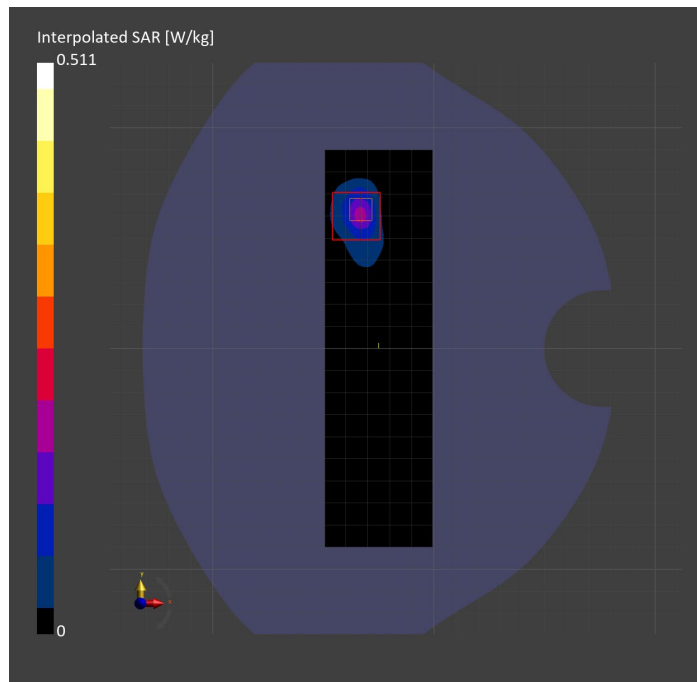
Probe   Calibration Date	EX3DV4 - SN3929   2023-04-26	Phantom	Twin-SAM V5.0 (30deg probe tilt)
DAE   Calibration Date	DAE4 Sn1675   2023-05-11	TSL Type	HBBL-600-10000
Software Version	16.2.4.2524		

## Scan Setup

	Area Scan	Zoom Scan
Grid Extents [mm]	48.6 x 180.0	24.0 x 24.0 x 22.0
Grid Steps [mm]	8.1 x 10.0	4.0 x 4.0 x 1.4
Sensor Surface [mm]	3.0	1.4
Graded Grid	N/A	Yes
M2/M1 [%]		61.1
Dist 3dB Peak [mm]		5.7

## Measurement Results

	Area Scan	Zoom Scan
psSAR1g [W/Kg]	0.119	<b>0.116</b>
psSAR10g [W/Kg]	0.037	<b>0.025</b>
Power Drift [dB]	N/A	-0.02



# Measurement Report for Custom Band: IEEE 802.15.1 Bluetooth (GFSK, DH5), BACK

## Exposure Conditions

Band	Custom Band	TSL Permittivity	35.7
Frequency [MHz]   Channel Number	5844.000   5844000	TSL Conductivity [S/m]	5.38
Group   UID	CW   10032-CAA	Phantom Section   TSL	Flat   HSL
Conversion Factor	5.15	Test Distance [mm]	5.00

## Hardware Setup

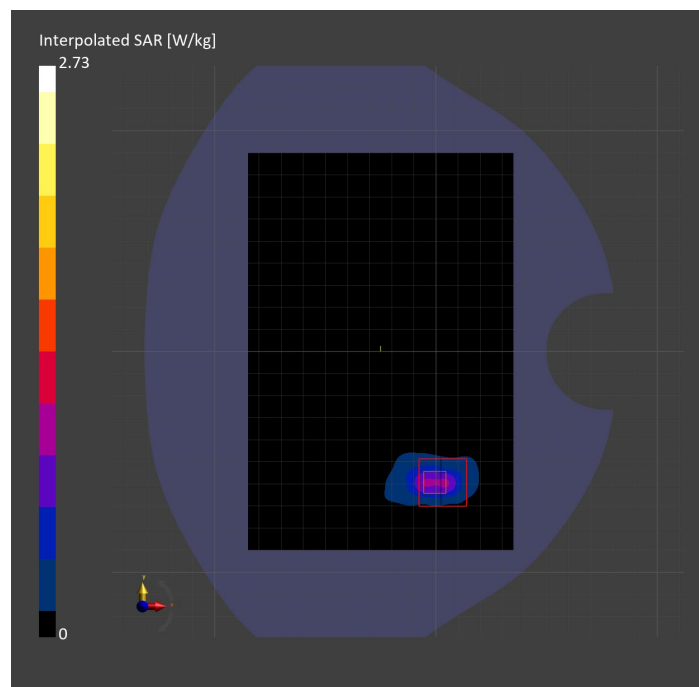
Probe   Calibration Date	EX3DV4 - SN3902   2023-03-17	Phantom	Twin-SAM V5.0 (30deg probe tilt)
DAE   Calibration Date	DAE4 Sn1439   2023-03-16	TSL Type	HBBL-600-10000
Software Version	16.2.4.2524		

## Scan Setup

	Area Scan	Zoom Scan
Grid Extents [mm]	120.0 x 180.0	24.0 x 24.0 x 22.0
Grid Steps [mm]	10.0 x 10.0	4.0 x 4.0 x 1.4
Sensor Surface [mm]	3.0	1.4
Graded Grid	N/A	Yes
M2/M1 [%]		63.5
Dist 3dB Peak [mm]		6.4

## Measurement Results

	Area Scan	Zoom Scan
psSAR1g [W/Kg]	0.679	<b>0.665</b>
psSAR10g [W/Kg]	0.217	<b>0.203</b>
Power Drift [dB]	N/A	-0.01



# Measurement Report for Custom Band: IEEE 802.15.1 Bluetooth (GFSK, DH5), CHEEK

## Exposure Conditions

Band	Custom Band	TSL Permittivity	35.4
Frequency [MHz]   Channel Number	5788.000   5788000	TSL Conductivity [S/m]	5.27
Group   UID	CW   10032-CAA	Phantom Section   TSL	RightHead   HSL
Conversion Factor	5.15	Test Distance [mm]	0.00

## Hardware Setup

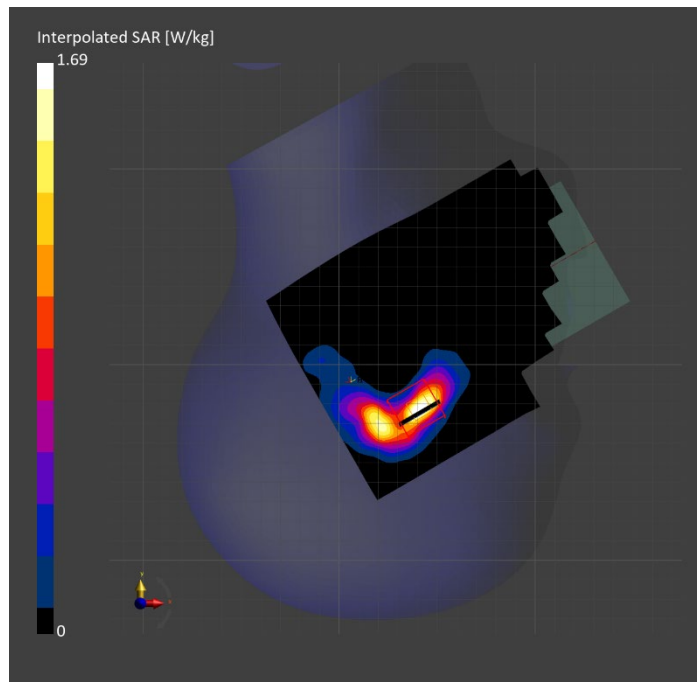
Probe   Calibration Date	EX3DV4 - SN3902   2023-03-17	Phantom	Twin-SAM V5.0 (30deg probe tilt)
DAE   Calibration Date	DAE4 Sn1439   2023-03-16	TSL Type	HBBL-600-10000
Software Version	16.2.4.2524		

## Scan Setup

	Area Scan	Zoom Scan
Grid Extents [mm]	120.0 x 180.0	24.0 x 24.0 x 22.0
Grid Steps [mm]	10.0 x 10.0	4.0 x 4.0 x 1.4
Sensor Surface [mm]	3.0	1.4
Graded Grid	N/A	Yes
M2/M1 [%]		57.6
Dist 3dB Peak [mm]		5.1

## Measurement Results

	Area Scan	Zoom Scan
psSAR1g [W/Kg]	0.398	<b>0.426</b>
psSAR10g [W/Kg]	0.135	<b>0.141</b>
Power Drift [dB]	N/A	0.18





# Measurement Report for Custom Band: IEEE 802.15.1 Bluetooth (GFSK, DH5), EDGE LEFT

## Exposure Conditions

<b>Band</b>	Custom Band	<b>TSL Permittivity</b>	35.8
<b>Frequency [MHz]   Channel Number</b>	5788.000   5788000	<b>TSL Conductivity [S/m]</b>	5.31
<b>Group   UID</b>	CW   10032-CAA	<b>Phantom Section   TSL</b>	Flat   HSL
<b>Conversion Factor</b>	5.15	<b>Test Distance [mm]</b>	5.00

## Hardware Setup

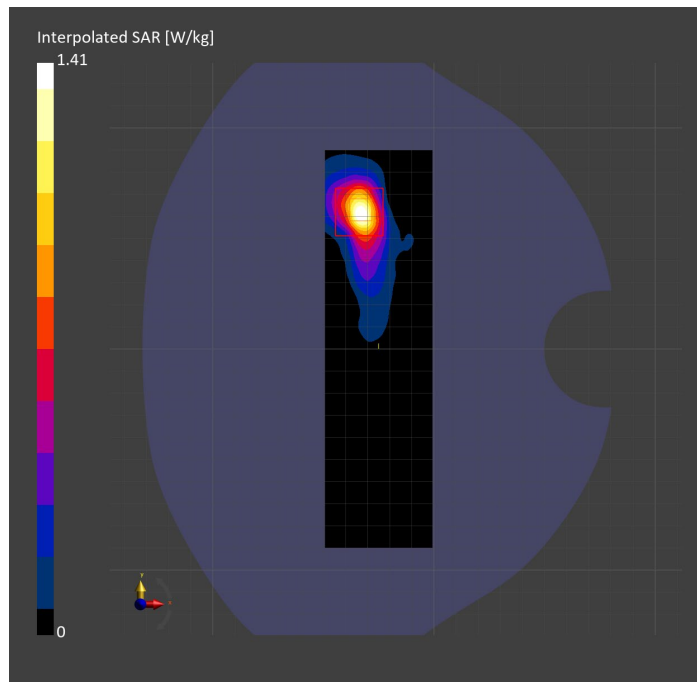
<b>Probe   Calibration Date</b>	EX3DV4 - SN3902   2023-03-17	<b>Phantom</b>	Twin-SAM V5.0 (30deg probe tilt)
<b>DAE   Calibration Date</b>	DAE4 Sn1439   2023-03-16	<b>TSL Type</b>	HBBL-600-10000
<b>Software Version</b>	16.2.4.2524		

## Scan Setup

	Area Scan	Zoom Scan
<b>Grid Extents [mm]</b>	48.6 x 180.0	24.0 x 24.0 x 22.0
<b>Grid Steps [mm]</b>	8.1 x 10.0	4.0 x 4.0 x 1.4
<b>Sensor Surface [mm]</b>	3.0	1.4
<b>Graded Grid</b>	N/A	Yes
<b>M2/M1 [%]</b>		63.0
<b>Dist 3dB Peak [mm]</b>		7.4

## Measurement Results

	Area Scan	Zoom Scan
<b>psSAR1g [W/Kg]</b>	0.344	<b>0.359</b>
<b>psSAR10g [W/Kg]</b>	0.111	<b>0.111</b>
<b>Power Drift [dB]</b>	N/A	0.13



# Measurement Report for Custom Band: CW, BACK

## Exposure Conditions

Band	Custom Band	TSL Permittivity	39.3
Frequency [MHz]   Channel Number	1625.100   1625100	TSL Conductivity [S/m]	1.25
Group   UID	CW   0--	Phantom Section   TSL	Flat   HSL
Conversion Factor	8.86	Test Distance [mm]	5.00

## Hardware Setup

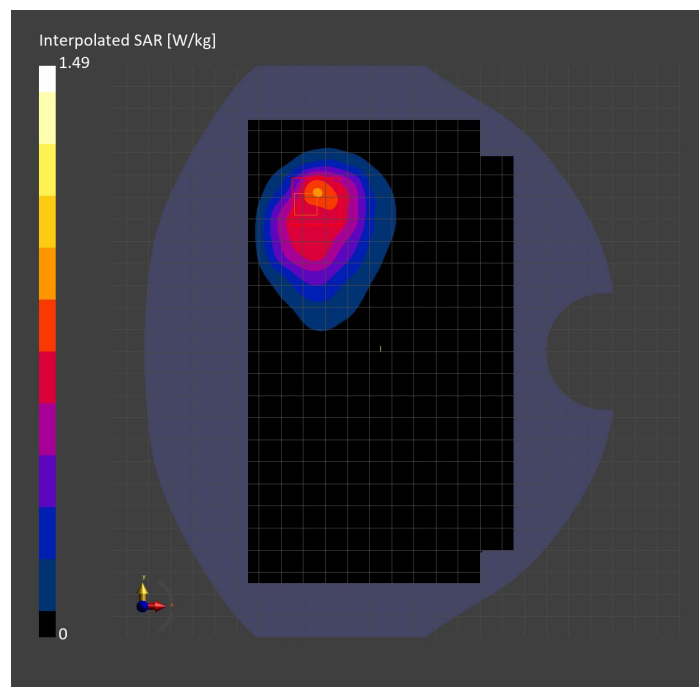
Probe   Calibration Date	EX3DV4 - SN3989   2023-01-26	Phantom	Twin-SAM V8.0 (30deg probe tilt)
DAE   Calibration Date	DAE4 Sn1257   2022-09-20	TSL Type	HBBL-600-10000
Software Version	16.2.4.2524		

## Scan Setup

	Area Scan	Zoom Scan
Grid Extents [mm]	120.0 x 210.0	30.0 x 30.0 x 30.0
Grid Steps [mm]	15.0 x 15.0	6.0 x 6.0 x 1.5
Sensor Surface [mm]	3.0	1.4
Graded Grid	N/A	Yes
M2/M1 [%]		81.3
Dist 3dB Peak [mm]		8.1

## Measurement Results

	Area Scan	Zoom Scan
psSAR1g [W/Kg]	0.708	<b>0.743</b>
psSAR10g [W/Kg]	0.416	<b>0.404</b>
Power Drift [dB]	N/A	0.02



# Measurement Report for Custom Band: CW, EDGE RIGHT

## Exposure Conditions

Band	Custom Band	TSL Permittivity	39.3
Frequency [MHz]   Channel Number	1617.600   1617600	TSL Conductivity [S/m]	1.25
Group   UID	CW   0--	Phantom Section   TSL	Flat   HSL
Conversion Factor	8.86	Test Distance [mm]	5.00

## Hardware Setup

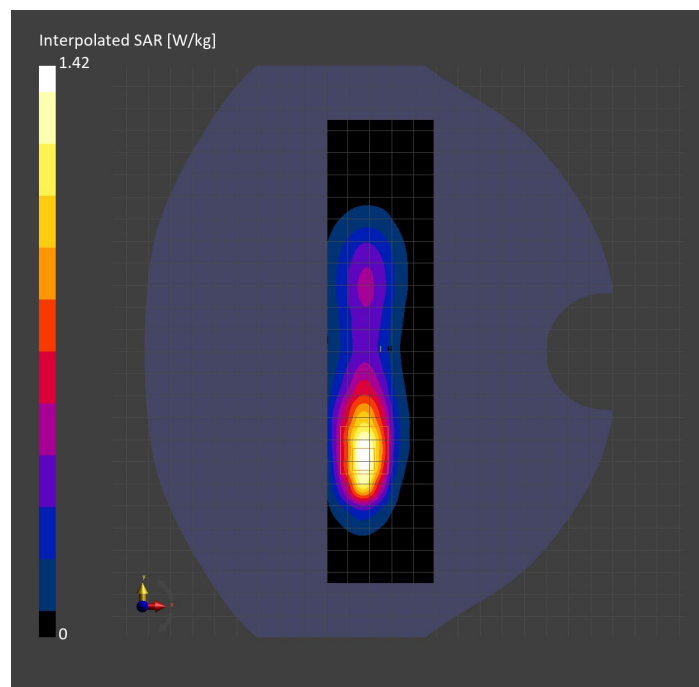
Probe   Calibration Date	EX3DV4 - SN3989   2023-01-26	Phantom	Twin-SAM V8.0 (30deg probe tilt)
DAE   Calibration Date	DAE4 Sn1257   2022-09-20	TSL Type	HBBL-600-10000
Software Version	16.2.4.2524		

## Scan Setup

	Area Scan	Zoom Scan
Grid Extents [mm]	48.0 x 210.0	30.0 x 30.0 x 30.0
Grid Steps [mm]	8.0 x 15.0	6.0 x 6.0 x 1.5
Sensor Surface [mm]	3.0	1.4
Graded Grid	N/A	Yes
M2/M1 [%]		86.5
Dist 3dB Peak [mm]		8.4

## Measurement Results

	Area Scan	Zoom Scan
psSAR1g [W/Kg]	0.798	<b>0.800</b>
psSAR10g [W/Kg]	0.412	<b>0.417</b>
Power Drift [dB]	N/A	0.01



# Measurement Report for Custom Band: CW, CHEEK

## Exposure Conditions

Band	Custom Band	TSL Permittivity	37.3
Frequency [MHz]   Channel Number	2440.000   2440000	TSL Conductivity [S/m]	1.87
Group   UID	CW   0--	Phantom Section   TSL	LeftHead   HSL
Conversion Factor	7.33	Test Distance [mm]	0.00

## Hardware Setup

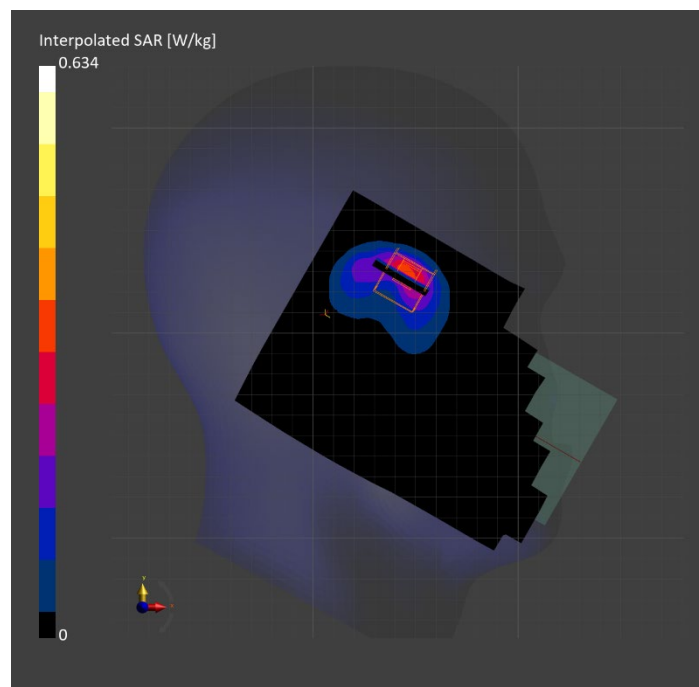
Probe   Calibration Date	EX3DV4 - SN3772   2023-02-13	Phantom	Twin-SAM V8.0 (30deg probe tilt)
DAE   Calibration Date	DAE4 Sn1359   2023-01-24	TSL Type	HBBL-600-10000
Software Version	16.2.4.2524		

## Scan Setup

	Area Scan	Zoom Scan
Grid Extents [mm]	120.0 x 180.0	30.0 x 30.0 x 30.0
Grid Steps [mm]	10.0 x 10.0	5.0 x 5.0 x 1.5
Sensor Surface [mm]	3.0	1.4
Graded Grid	N/A	Yes
M2/M1 [%]		78.4
Dist 3dB Peak [mm]		6.8

## Measurement Results

	Area Scan	Zoom Scan
psSAR1g [W/Kg]	0.246	<b>0.273</b>
psSAR10g [W/Kg]	0.114	<b>0.116</b>
Power Drift [dB]	N/A	-0.12



# Measurement Report for Custom Band: CW, BACK

## Exposure Conditions

Band	Custom Band	TSL Permittivity	37.3
Frequency [MHz]   Channel Number	2440.000   2440000	TSL Conductivity [S/m]	1.87
Group   UID	CW   0--	Phantom Section   TSL	Flat   HSL
Conversion Factor	7.33	Test Distance [mm]	5.00

## Hardware Setup

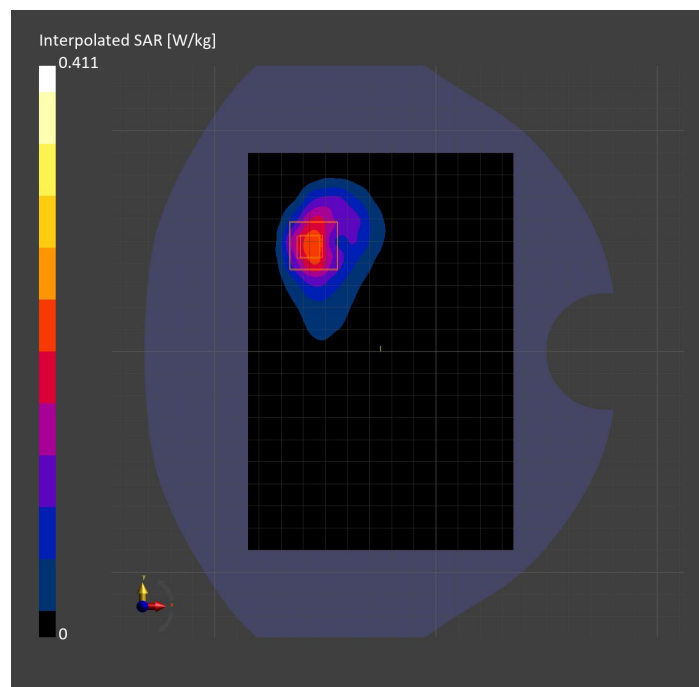
Probe   Calibration Date	EX3DV4 - SN3772   2023-02-13	Phantom	Twin-SAM V8.0 (30deg probe tilt)
DAE   Calibration Date	DAE4 Sn1359   2023-01-24	TSL Type	HBBL-600-10000
Software Version	16.2.4.2524		

## Scan Setup

	Area Scan	Zoom Scan
Grid Extents [mm]	120.0 x 180.0	30.0 x 30.0 x 30.0
Grid Steps [mm]	10.0 x 10.0	5.0 x 5.0 x 1.5
Sensor Surface [mm]	3.0	1.4
Graded Grid	N/A	Yes
M2/M1 [%]		80.1
Dist 3dB Peak [mm]		8.0

## Measurement Results

	Area Scan	Zoom Scan
psSAR1g [W/Kg]	0.182	<b>0.191</b>
psSAR10g [W/Kg]	0.088	<b>0.085</b>
Power Drift [dB]	N/A	-0.06



# Measurement Report for Custom Band: CW, EDGE RIGHT

## Exposure Conditions

Band	Custom Band	TSL Permittivity	37.3
Frequency [MHz]   Channel Number	2440.000   2440000	TSL Conductivity [S/m]	1.87
Group   UID	CW   0--	Phantom Section   TSL	Flat   HSL
Conversion Factor	7.33	Test Distance [mm]	5.00

## Hardware Setup

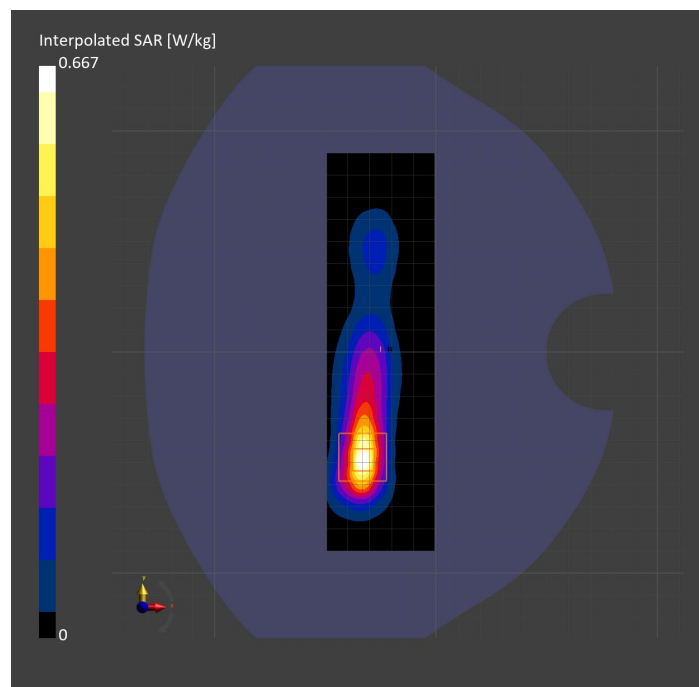
Probe   Calibration Date	EX3DV4 - SN3772   2023-02-13	Phantom	Twin-SAM V8.0 (30deg probe tilt)
DAE   Calibration Date	DAE4 Sn1359   2023-01-24	TSL Type	HBBL-600-10000
Software Version	16.2.4.2524		

## Scan Setup

	Area Scan	Zoom Scan
Grid Extents [mm]	48.6 x 180.0	30.0 x 30.0 x 30.0
Grid Steps [mm]	8.1 x 10.0	5.0 x 5.0 x 1.5
Sensor Surface [mm]	3.0	1.4
Graded Grid	N/A	Yes
M2/M1 [%]		79.0
Dist 3dB Peak [mm]		7.0

## Measurement Results

	Area Scan	Zoom Scan
psSAR1g [W/Kg]	0.309	<b>0.301</b>
psSAR10g [W/Kg]	0.133	<b>0.126</b>
Power Drift [dB]	N/A	0.03



# Measurement Report for Custom Band: Pulse Waveform (200Hz, 10%), CHEEK

## Exposure Conditions

Band	Custom Band	TSL Permittivity	34.5
Frequency [MHz]   Channel Number	5786.300   5786300	TSL Conductivity [S/m]	5.28
Group   UID	CW   10658-AAB	Phantom Section   TSL	RightHead   HSL
Conversion Factor	5.0	Test Distance [mm]	0.00

## Hardware Setup

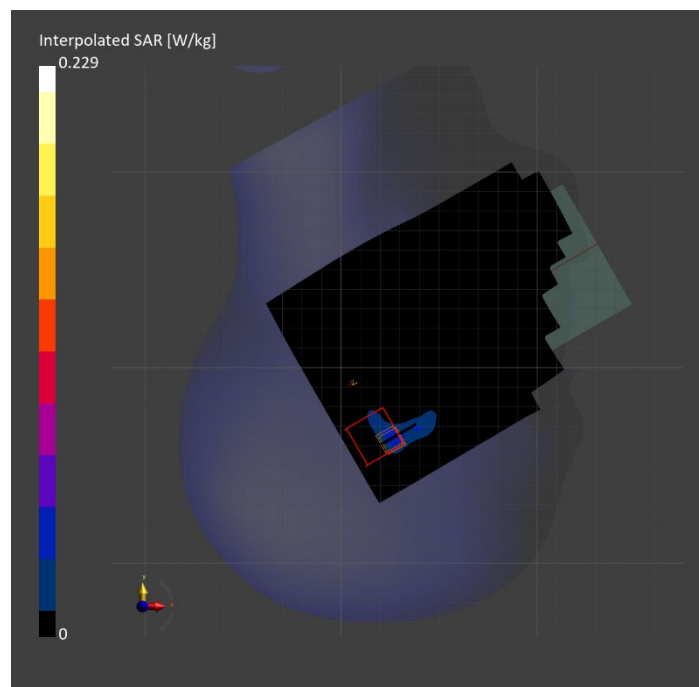
Probe   Calibration Date	EX3DV4 - SN3929   2023-04-26	Phantom	Twin-SAM V5.0 (30deg probe tilt)
DAE   Calibration Date	DAE4 Sn1675   2023-05-11	TSL Type	HBBL-600-10000
Software Version	16.2.4.2524		

## Scan Setup

	Area Scan	Zoom Scan	Secondary Zoom Scan
Grid Extents [mm]	120.0 x 180.0	24.0 x 24.0 x 22.0	24.0 x 24.0 x 22.0
Grid Steps [mm]	10.0 x 10.0	4.0 x 4.0 x 1.4	4.0 x 4.0 x 1.4
Sensor Surface [mm]	3.0	1.4	1.4
Graded Grid	N/A	Yes	Yes
M2/M1 [%]		46.7	50.6
Dist 3dB Peak [mm]		5.1	4.6

## Measurement Results

	Area Scan	Zoom Scan	Secondary Zoom Scan
psSAR1g [W/Kg]	0.031	<b>0.028</b>	<b>0.029</b>
psSAR10g [W/Kg]	0.009	<b>0</b>	<b>0</b>
Power Drift [dB]	N/A	-0.86	-0.70



# Measurement Report for Custom Band: Pulse Waveform (200Hz, 10%), BACK

## Exposure Conditions

Band	Custom Band	TSL Permittivity	34.5
Frequency [MHz]   Channel Number	5786.300   5786300	TSL Conductivity [S/m]	5.28
Group   UID	CW   10658-AAB	Phantom Section   TSL	Flat   HSL
Conversion Factor	5.0	Test Distance [mm]	5.00

## Hardware Setup

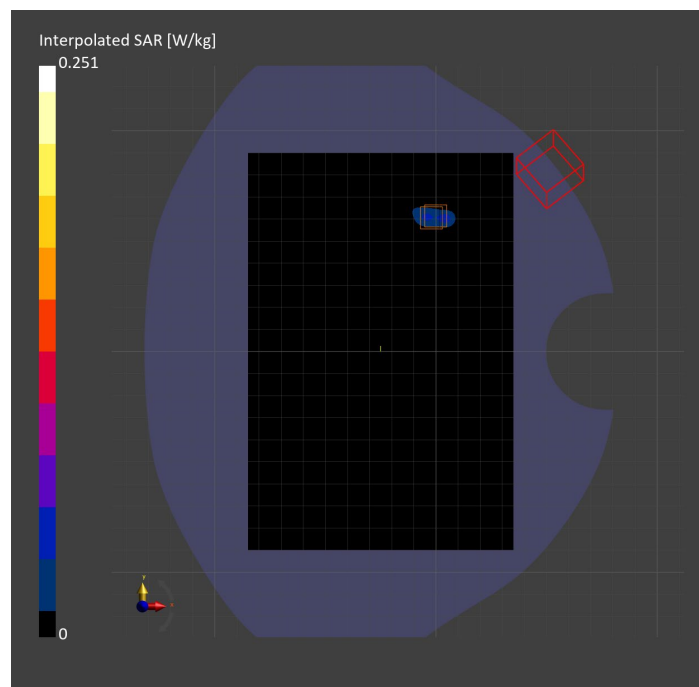
Probe   Calibration Date	EX3DV4 - SN3929   2023-04-26	Phantom	Twin-SAM V5.0 (30deg probe tilt)
DAE   Calibration Date	DAE4 Sn1675   2023-05-11	TSL Type	HBBL-600-10000
Software Version	16.2.4.2524		

## Scan Setup

	Area Scan	Zoom Scan	Secondary Zoom Scan
Grid Extents [mm]	120.0 x 180.0	24.0 x 24.0 x 22.0	24.0 x 24.0 x 22.0
Grid Steps [mm]	10.0 x 10.0	4.0 x 4.0 x 1.4	4.0 x 4.0 x 1.4
Sensor Surface [mm]	3.0	1.4	1.4
Graded Grid	N/A	Yes	Yes
M2/M1 [%]		38.8	51.7
Dist 3dB Peak [mm]		2.9	3.6

## Measurement Results

	Area Scan	Zoom Scan	Secondary Zoom Scan
psSAR1g [W/Kg]	0.026	<b>0.025</b>	<b>0.028</b>
psSAR10g [W/Kg]	0.005	<b>0</b>	<b>0</b>
Power Drift [dB]	N/A	1.91	-1.20





# Measurement Report for Custom Band: Pulse Waveform (200Hz, 10%), EDGE LEFT

## Exposure Conditions

Band	Custom Band	TSL Permittivity	34.1
Frequency [MHz]   Channel Number	5786.300   5786300	TSL Conductivity [S/m]	5.30
Group   UID	CW   10658-AAB	Phantom Section   TSL	Flat   HSL
Conversion Factor	4.86	Test Distance [mm]	5.00

## Hardware Setup

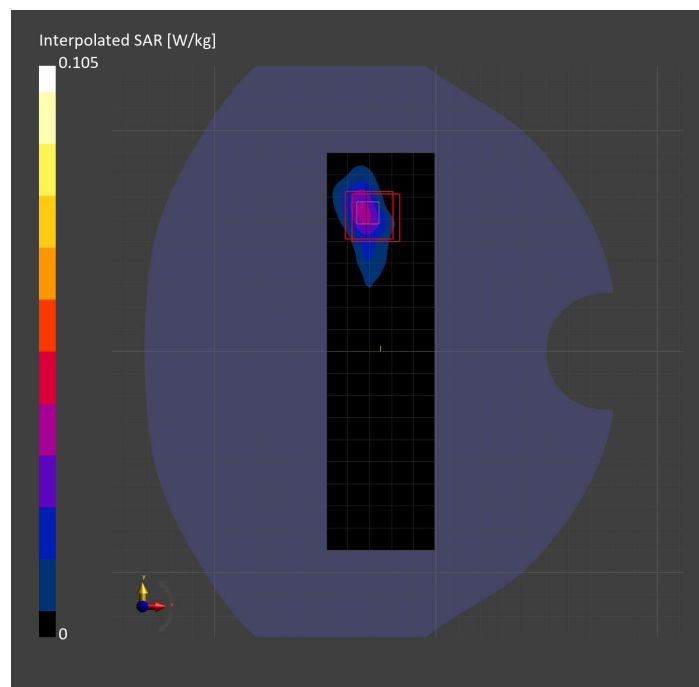
Probe   Calibration Date	EX3DV4 - SN7810   2023-04-25	Phantom	Twin-SAM V8.0 (30deg probe tilt)
DAE   Calibration Date	DAE4 Sn1439   2023-03-16	TSL Type	HBBL-600-10000
Software Version	16.2.4.2524		

## Scan Setup

	Area Scan	Zoom Scan	Secondary Zoom Scan
Grid Extents [mm]	48.6 x 180.0	24.0 x 24.0 x 22.0	24.0 x 24.0 x 22.0
Grid Steps [mm]	8.1 x 10.0	4.0 x 4.0 x 1.4	4.0 x 4.0 x 1.4
Sensor Surface [mm]	3.0	1.4	1.4
Graded Grid	N/A	Yes	Yes
M2/M1 [%]		69.3	52.3
Dist 3dB Peak [mm]		4.9	4.9

## Measurement Results

	Area Scan	Zoom Scan	Secondary Zoom Scan
psSAR1g [W/Kg]	0.027	<b>0.022</b>	<b>0.017</b>
psSAR10g [W/Kg]	0.009	<b>0.006</b>	<b>0.002</b>
Power Drift [dB]	N/A	3.95	1.19



# Measurement Report for Custom Band: CW, EDGE TOP

## Exposure Conditions

Band	Custom Band	TSL Permittivity	57.2
Frequency [MHz]   Channel Number	13.600   13600	TSL Conductivity [S/m]	0.727
Group   UID	CW   0--	Phantom Section   TSL	Flat   HSL
Conversion Factor	19.03	Test Distance [mm]	0.00

## Hardware Setup

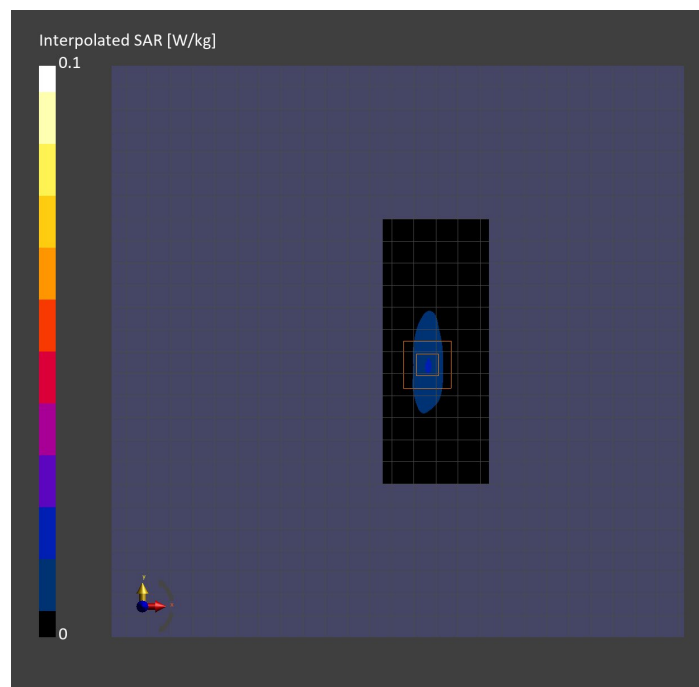
Probe   Calibration Date	EX3DV4 - SN3989   2023-01-26	Phantom	ELI V8.0 (20deg probe tilt)
DAE   Calibration Date	DAE4 Sn1257   2022-09-20	TSL Type	HBBL4-250V3
Software Version	16.2.4.2524		

## Scan Setup

	Area Scan	Zoom Scan
Grid Extents [mm]	48.0 x 120.0	30.0 x 30.0 x 30.0
Grid Steps [mm]	8.0 x 15.0	6.0 x 6.0 x 1.5
Sensor Surface [mm]	3.0	1.4
Graded Grid	N/A	Yes
M2/M1 [%]		59.4
Dist 3dB Peak [mm]		4.8

## Measurement Results

	Area Scan	Zoom Scan
psSAR1g [W/Kg]	0.015	<b>0.014</b>
psSAR10g [W/Kg]	0.009	<b>0.005</b>
Power Drift [dB]	N/A	0.05



# Band 14: LTE-FDD (SC-FDMA, 1 RB, 10 MHz, QPSK) RBPosition:Mid AntennaCfg:SISO, BACK

## Exposure Conditions

Band	Band 14	TSL Permittivity	43.5
Frequency [MHz]   Channel Number	793.000   23330	TSL Conductivity [S/m]	0.891
Group   UID	LTE-FDD   10175-CAH	Phantom Section   TSL	Flat   HSL
Conversion Factor	8.6	Test Distance [mm]	25.00

## Hardware Setup

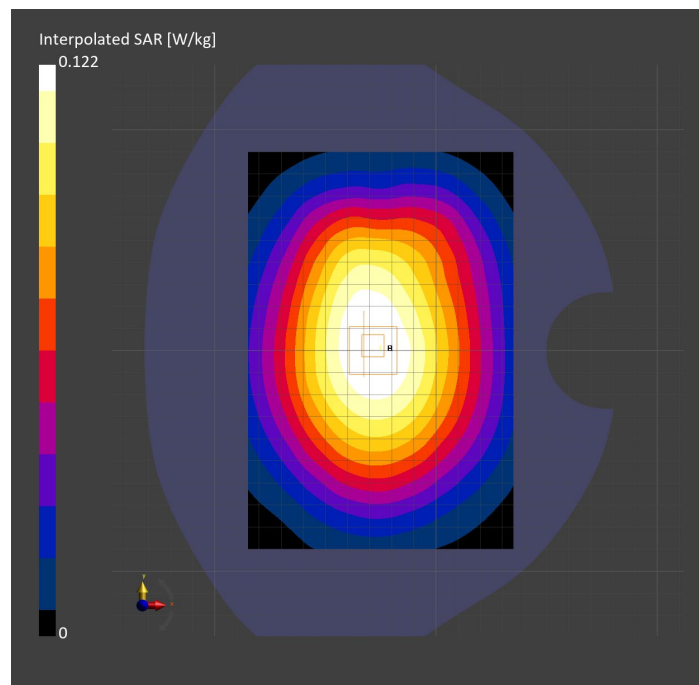
Probe   Calibration Date	EX3DV4 - SN3749   2023-01-27	Phantom	Twin-SAM V8.0 (30deg probe tilt)
DAE   Calibration Date	DAE4 Sn1784   2023-04-03	TSL Type	HBBL-600-10000
Software Version	16.2.4.2524		

## Scan Setup

	Area Scan	Zoom Scan
Grid Extents [mm]	120.0 x 180.0	30.0 x 30.0 x 30.0
Grid Steps [mm]	15.0 x 15.0	6.0 x 6.0 x 1.5
Sensor Surface [mm]	3.0	1.4
Graded Grid	N/A	Yes
M2/M1 [%]		91.9
Dist 3dB Peak [mm]		> 15.0
Peak SAR [W/kg]   SAR Peak Location [mm]	N/A	0.122   [-32.5, -0.0, -207.0]

## Measurement Results

	Area Scan	Zoom Scan
psSAR1g [W/Kg]	0.089	<b>0.096</b>
psSAR10g [W/Kg]	0.064	<b>0.074</b>
Power Drift [dB]	N/A	-0.04



**Band n77: 5G NR (DFT-s-OFDM, 50% RB, 100 MHz, QPSK, 30 kHz) RBPosition:Mid  
AntennaCfg:SISO, BACK**

**Exposure Conditions**

Band	Band n77	TSL Permittivity	39.6
Frequency [MHz]   Channel Number	3499.980   633332	TSL Conductivity [S/m]	2.79
Group   UID	5G NR FR1 TDD   10917-AAD	Phantom Section   TSL	Flat   HSL
Conversion Factor	6.78	Test Distance [mm]	25.00

**Hardware Setup**

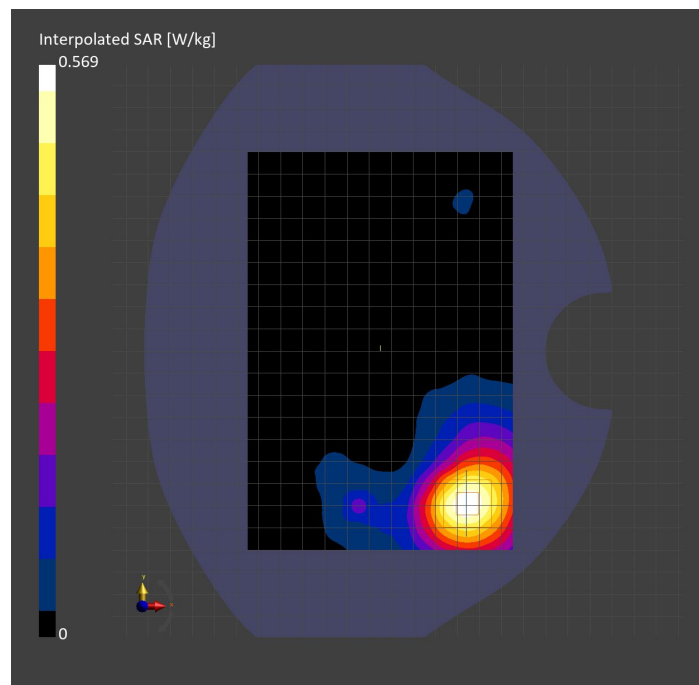
Probe   Calibration Date	EX3DV4 - SN3989   2023-01-26	Phantom	Twin-SAM V8.0 (30deg probe tilt)
DAE   Calibration Date	DAE4 Sn1547   2023-04-18	TSL Type	HBBL-600-10000
Software Version	16.2.4.2524		

**Scan Setup**

	Area Scan	Zoom Scan
Grid Extents [mm]	120.0 x 180.0	30.0 x 30.0 x 28.0
Grid Steps [mm]	10.0 x 10.0	5.0 x 5.0 x 1.4
Sensor Surface [mm]	3.0	1.4
Graded Grid	N/A	Yes
M2/M1 [%]		77.8
Dist 3dB Peak [mm]		16.3
Peak SAR [W/kg]   SAR Peak Location [mm]	N/A	0.596   [14.0, -69.0, -207.0]

**Measurement Results**

	Area Scan	Zoom Scan
psSAR1g [W/Kg]	0.280	<b>0.280</b>
psSAR10g [W/Kg]	0.138	<b>0.140</b>
Power Drift [dB]	N/A	0.06



# Custom Band: CW, EDGE BOTTOM

## Exposure Conditions

Band	Custom Band	TSL Permittivity	40.9
Frequency [MHz]   Channel Number	1625.100   262466	TSL Conductivity [S/m]	1.24
Group   UID	CW   0--	Phantom Section   TSL	Flat   HSL
Conversion Factor	8.86	Test Distance [mm]	25.00

## Hardware Setup

Probe   Calibration Date	EX3DV4 - SN3989   2023-01-26	Phantom	Twin-SAM V8.0 (30deg probe tilt)
DAE   Calibration Date	DAE4 Sn1547   2023-04-18	TSL Type	HBBL-600-10000
Software Version	16.2.4.2524		

## Scan Setup

	Area Scan	Zoom Scan
Grid Extents [mm]	48.6 x 120.0	30.0 x 30.0 x 30.0
Grid Steps [mm]	8.1 x 15.0	6.0 x 6.0 x 1.5
Sensor Surface [mm]	3.0	1.4
Graded Grid	N/A	Yes
M2/M1 [%]		87.3
Dist 3dB Peak [mm]		16.7
Peak SAR [W/kg]   SAR Peak Location [mm]	N/A	0.624   [-26.8, -8.4, -207.0]

## Measurement Results

	Area Scan	Zoom Scan
psSAR1g [W/Kg]	0.397	<b>0.410</b>
psSAR10g [W/Kg]	0.238	<b>0.258</b>
Power Drift [dB]	N/A	-0.10

