

# System Performance Check Report for D2450V2 - SN706

## Exposure Conditions

Frequency [MHz]   Channel Number	2450.000   0	TSL Permittivity	37.5
Group   UID	CW   0--	TSL Conductivity [S/m]	1.80
Conversion Factor	7.33	Phantom Section   TSL	Flat   HSL

## Hardware Setup

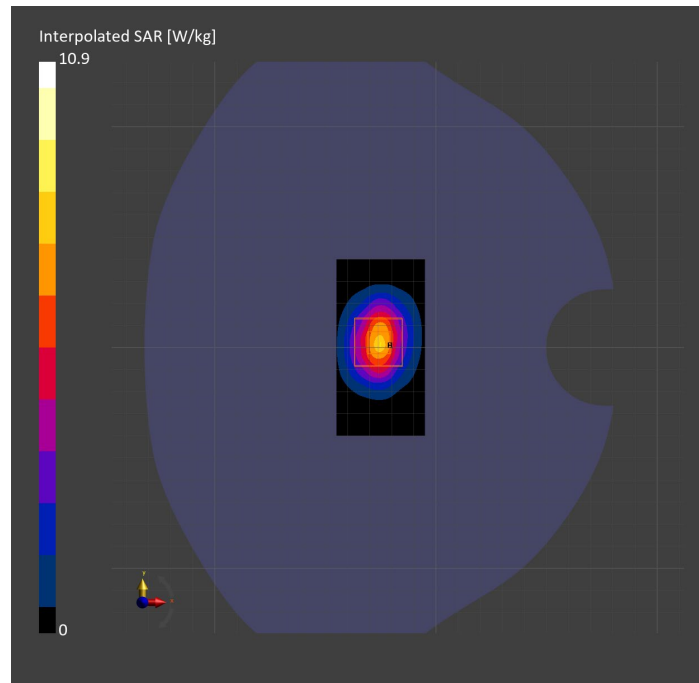
Probe   Calibration Date	EX3DV4 - SN3772   2023-02-13	Phantom	Twin-SAM V8.0 (30deg probe tilt)
DAE   Calibration Date	DAE4 Sn1359   2023-01-24	TSL Type	HBBL-600-10000
Software Version	16.2.4.2524		

## Scans Setup

	Area Scan	Zoom Scan
Grid Extents [mm]	40.0 x 80.0	30.0 x 30.0 x 30.0
Grid Steps [mm]	10.0 x 10.0	5.0 x 5.0 x 1.5
Sensor Surface [mm]	3.0	1.4
Graded Grid	N/A	Yes
M2/M1 [%]		80.9
Dist 3dB Peak [mm]		9.0

## Measurement Results

	Area Scan	Zoom Scan
psSAR1g [W/Kg]	5.83	5.37
psSAR10g [W/Kg]	2.72	2.50
Power Drift [dB]	N/A	-0.17



# System Performance Check Report for D5GHzV2 - SN1138

## Exposure Conditions

Frequency [MHz]   Channel Number	5250.000   0	TSL Permittivity	35.8
Group   UID	CW   0--	TSL Conductivity [S/m]	4.68
Conversion Factor	5.14	Phantom Section   TSL	Flat   HSL

## Hardware Setup

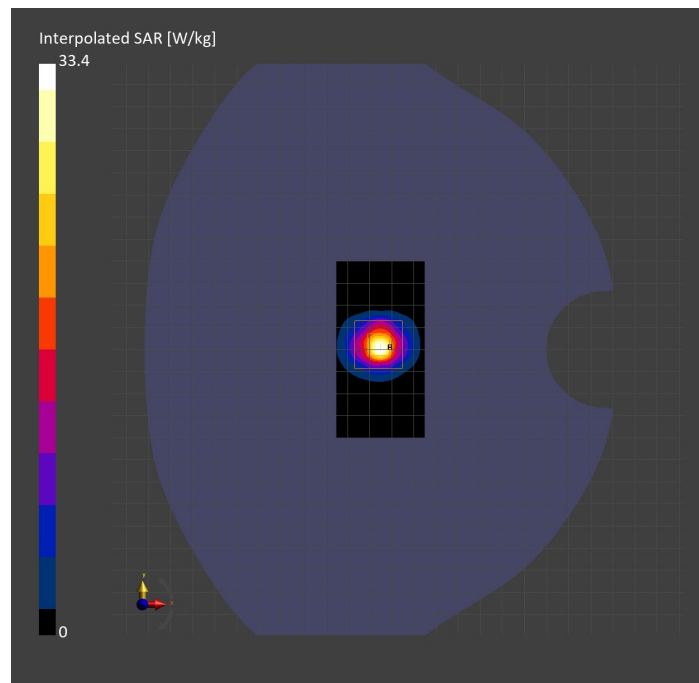
Probe   Calibration Date	EX3DV4 - SN3773   2023-02-13	Phantom	Twin-SAM V5.0 (30deg probe tilt)
DAE   Calibration Date	DAE4 Sn1258   2023-03-16	TSL Type	HBBL-600-10000
Software Version	16.2.4.2524		

## Scans Setup

	Area Scan	Zoom Scan
Grid Extents [mm]	40.0 x 80.0	22.0 x 22.0 x 22.0
Grid Steps [mm]	10.0 x 10.0	4.0 x 4.0 x 1.4
Sensor Surface [mm]	3.0	1.4
Graded Grid	N/A	Yes
M2/M1 [%]		63.9
Dist 3dB Peak [mm]		7.2

## Measurement Results

	Area Scan	Zoom Scan
psSAR1g [W/Kg]	7.82	8.47
psSAR10g [W/Kg]	2.26	2.44
Power Drift [dB]	N/A	-0.04



# System Performance Check Report for D2450V2 - SN899

## Exposure Conditions

Frequency [MHz]   Channel Number	2450.000   0	TSL Permittivity	39.5
Group   UID	CW   0--	TSL Conductivity [S/m]	1.73
Conversion Factor	7.64	Phantom Section   TSL	Flat   HSL

## Hardware Setup

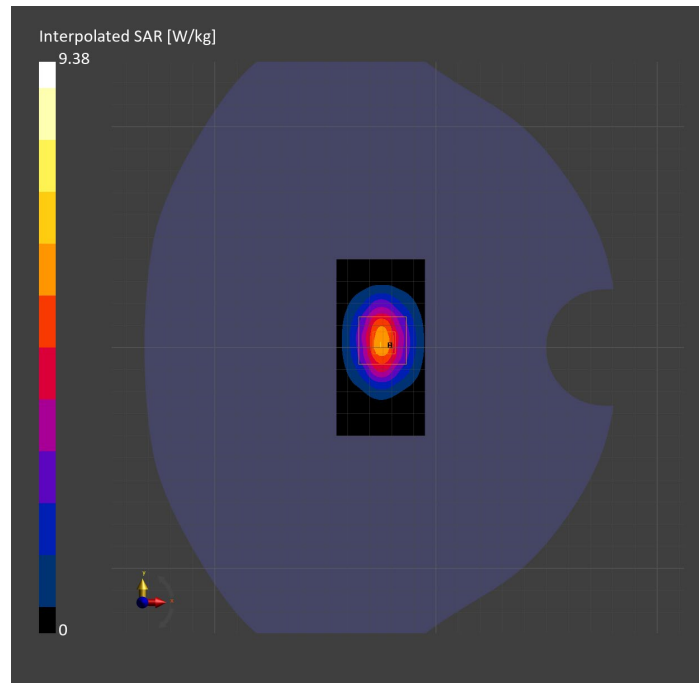
Probe   Calibration Date	EX3DV4 - SN7587   2023-04-18	Phantom	Twin-SAM V8.0 (30deg probe tilt)
DAE   Calibration Date	DAE4 Sn1239   2023-03-16	TSL Type	HBBL-600-10000
Software Version	16.2.4.2524		

## Scans Setup

	Area Scan	Zoom Scan
Grid Extents [mm]	40.0 x 80.0	30.0 x 30.0 x 30.0
Grid Steps [mm]	10.0 x 10.0	5.0 x 5.0 x 1.5
Sensor Surface [mm]	3.0	1.4
Graded Grid	N/A	Yes
M2/M1 [%]		82.3
Dist 3dB Peak [mm]		9.0

## Measurement Results

	Area Scan	Zoom Scan
psSAR1g [W/Kg]	4.70	<b>4.84</b>
psSAR10g [W/Kg]	2.18	<b>2.32</b>
Power Drift [dB]	N/A	-0.02



# System Performance Check Report for D5GHzV2 - SN1003

## Exposure Conditions

Frequency [MHz]   Channel Number	5600.000   0	TSL Permittivity	34.1
Group   UID	CW   0--	TSL Conductivity [S/m]	4.84
Conversion Factor	4.75	Phantom Section   TSL	Flat   HSL

## Hardware Setup

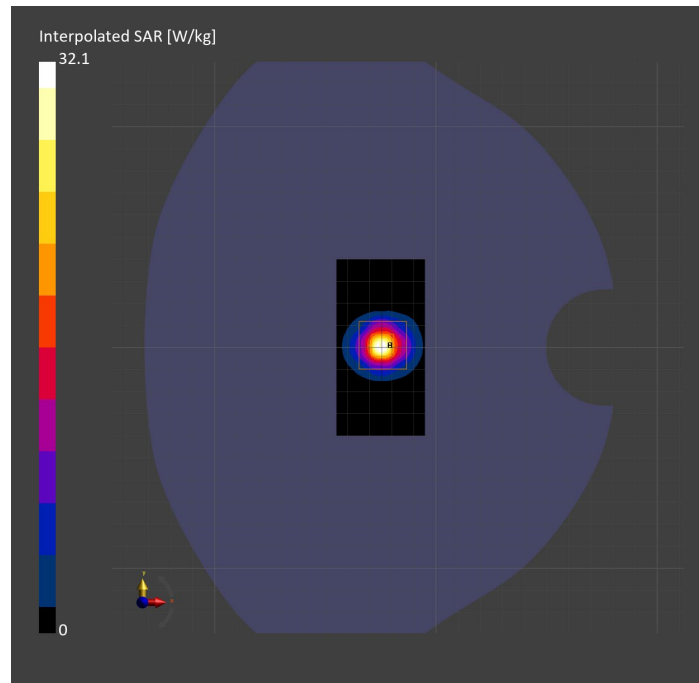
Probe   Calibration Date	EX3DV4 - SN3929   2023-04-26	Phantom	Twin-SAM V5.0 (30deg probe tilt)
DAE   Calibration Date	DAE4 Sn1675   2023-05-11	TSL Type	HBBL-600-10000
Software Version	16.2.4.2524		

## Scans Setup

	Area Scan	Zoom Scan
Grid Extents [mm]	40.0 x 80.0	22.0 x 22.0 x 22.0
Grid Steps [mm]	10.0 x 10.0	4.0 x 4.0 x 1.4
Sensor Surface [mm]	3.0	1.4
Graded Grid	N/A	Yes
M2/M1 [%]		62.0
Dist 3dB Peak [mm]		7.3

## Measurement Results

	Area Scan	Zoom Scan
psSAR1g [W/Kg]	7.34	<b>7.64</b>
psSAR10g [W/Kg]	2.06	<b>2.14</b>
Power Drift [dB]	N/A	0.02



# System Performance Check Report for D5GHzV2 - SN1168

## Exposure Conditions

Frequency [MHz]   Channel Number	5600.000   0	TSL Permittivity	37.2
Group   UID	CW   0--	TSL Conductivity [S/m]	4.81
Conversion Factor	4.46	Phantom Section   TSL	Flat   HSL

## Hardware Setup

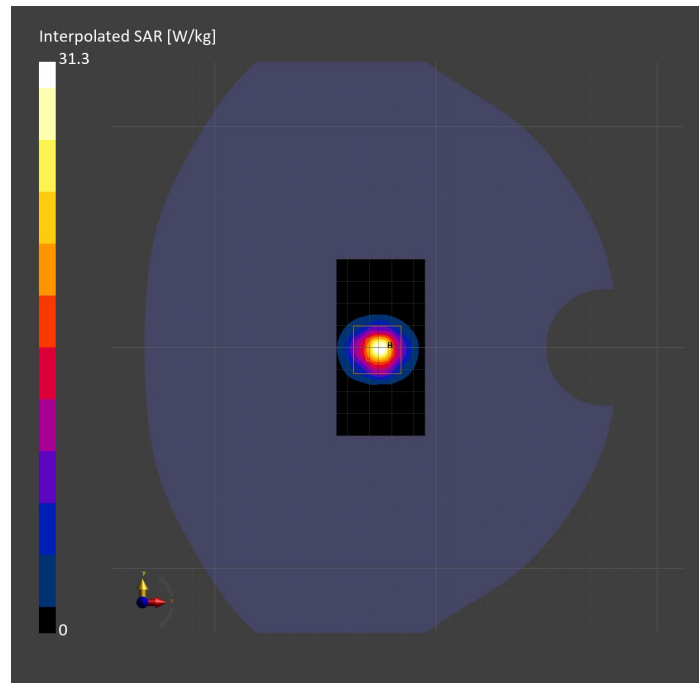
Probe   Calibration Date	EX3DV4 - SN7585   2023-04-18	Phantom	Twin-SAM V5.0 (30deg probe tilt)
DAE   Calibration Date	DAE4 Sn1259   2023-03-13	TSL Type	HBBL-600-10000
Software Version	16.2.4.2524		

## Scans Setup

	Area Scan	Zoom Scan
Grid Extents [mm]	40.0 x 80.0	22.0 x 22.0 x 22.0
Grid Steps [mm]	10.0 x 10.0	4.0 x 4.0 x 1.4
Sensor Surface [mm]	3.0	1.4
Graded Grid	N/A	Yes
M2/M1 [%]		61.4
Dist 3dB Peak [mm]		7.3

## Measurement Results

	Area Scan	Zoom Scan
psSAR1g [W/Kg]	6.74	7.33
psSAR10g [W/Kg]	1.90	2.06
Power Drift [dB]	N/A	0.14



# System Performance Check Report for D5GHzV2 - SN1138

## Exposure Conditions

Frequency [MHz]   Channel Number	5600.000   0	TSL Permittivity	35.6
Group   UID	CW   0--	TSL Conductivity [S/m]	4.85
Conversion Factor	4.46	Phantom Section   TSL	Flat   HSL

## Hardware Setup

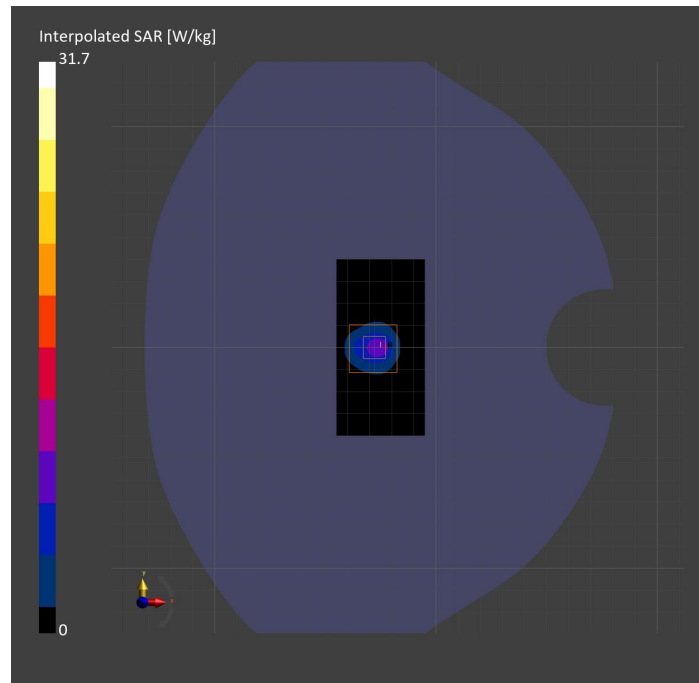
Probe   Calibration Date	EX3DV4 - SN7585   2023-04-18	Phantom	Twin-SAM V5.0 (30deg probe tilt)
DAE   Calibration Date	DAE4 Sn1797   2023-04-03	TSL Type	HBBL-600-10000
Software Version	16.2.4.2524		

## Scans Setup

	Area Scan	Zoom Scan
Grid Extents [mm]	40.0 x 80.0	22.0 x 22.0 x 22.0
Grid Steps [mm]	10.0 x 10.0	4.0 x 4.0 x 1.4
Sensor Surface [mm]	3.0	1.4
Graded Grid	N/A	Yes
M2/M1 [%]		61.8
Dist 3dB Peak [mm]		7.2

## Measurement Results

	Area Scan	Zoom Scan
psSAR1g [W/Kg]	6.69	<b>7.60</b>
psSAR10g [W/Kg]	1.97	<b>2.14</b>
Power Drift [dB]	N/A	0.00



# System Performance Check Report for D5GHzV2 - SN1138

## Exposure Conditions

Frequency [MHz]   Channel Number	5750.000   0	TSL Permittivity	35.4
Group   UID	CW   0--	TSL Conductivity [S/m]	5.23
Conversion Factor	5.15	Phantom Section   TSL	Flat   HSL

## Hardware Setup

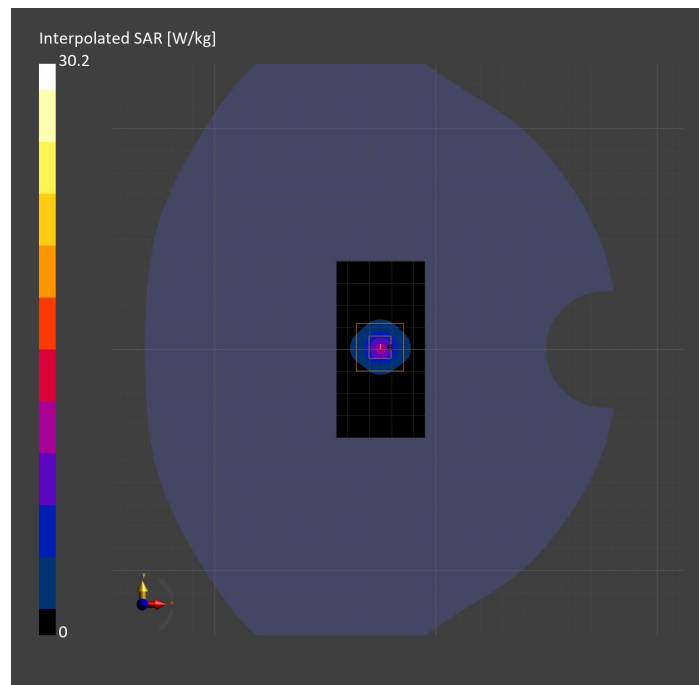
Probe   Calibration Date	EX3DV4 - SN3902   2023-03-17	Phantom	Twin-SAM V5.0 (30deg probe tilt)
DAE   Calibration Date	DAE4 Sn1439   2023-03-16	TSL Type	HBBL-600-10000
Software Version	16.2.4.2524		

## Scans Setup

	Area Scan	Zoom Scan
Grid Extents [mm]	40.0 x 80.0	22.0 x 22.0 x 22.0
Grid Steps [mm]	10.0 x 10.0	4.0 x 4.0 x 1.4
Sensor Surface [mm]	3.0	1.4
Graded Grid	N/A	Yes
M2/M1 [%]		62.3
Dist 3dB Peak [mm]		7.6

## Measurement Results

	Area Scan	Zoom Scan
psSAR1g [W/Kg]	6.86	7.07
psSAR10g [W/Kg]	1.95	2.03
Power Drift [dB]	N/A	-0.02



# System Performance Check Report for D5GHzV2 - SN1138

## Exposure Conditions

Band		TSL Permittivity	34.1
Frequency [MHz]   Channel Number	5750.000   0	TSL Conductivity [S/m]	5.12
Group   UID	CW   0--	Phantom Section   TSL	Flat   HSL
Conversion Factor	4.86	Test Distance [mm]	

## Hardware Setup

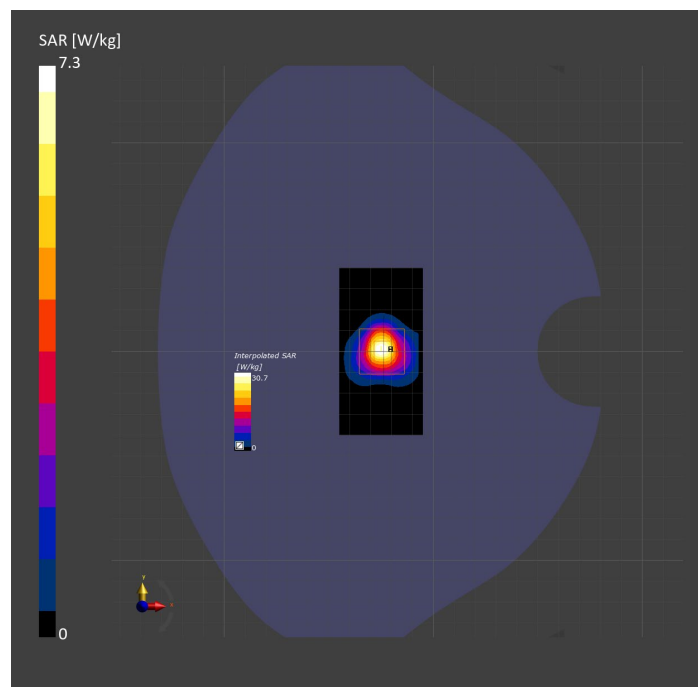
Probe   Calibration Date	EX3DV4 - SN7810   2023-04-25	Phantom	Twin-SAM V8.0 (30deg probe tilt)
DAE   Calibration Date	DAE4 Sn1797   2023-04-03	TSL Type	HBBL-600-10000
Software Version	16.2.4.2524		

## Scan Setup

	Area Scan	Zoom Scan
Grid Extents [mm]	40.0 x 80.0	22.0 x 22.0 x 22.0
Grid Steps [mm]	10.0 x 10.0	4.0 x 4.0 x 1.4
Sensor Surface [mm]	3.0	1.4
Graded Grid	N/A	Yes
M2/M1 [%]		60.7
Dist 3dB Peak [mm]		7.4

## Measurement Results

	Area Scan	Zoom Scan
psSAR1g [W/Kg]	6.77	7.31
psSAR10g [W/Kg]	1.94	2.11
Power Drift [dB]	N/A	-0.02





# System Performance Check Report for D2600V2 - SN1036

## Exposure Conditions

Frequency [MHz]   Channel Number	2600.000   0	TSL Permittivity	37.8
Group   UID	CW   0--	TSL Conductivity [S/m]	1.89
Conversion Factor	6.72	Phantom Section   TSL	Flat   HSL

## Hardware Setup

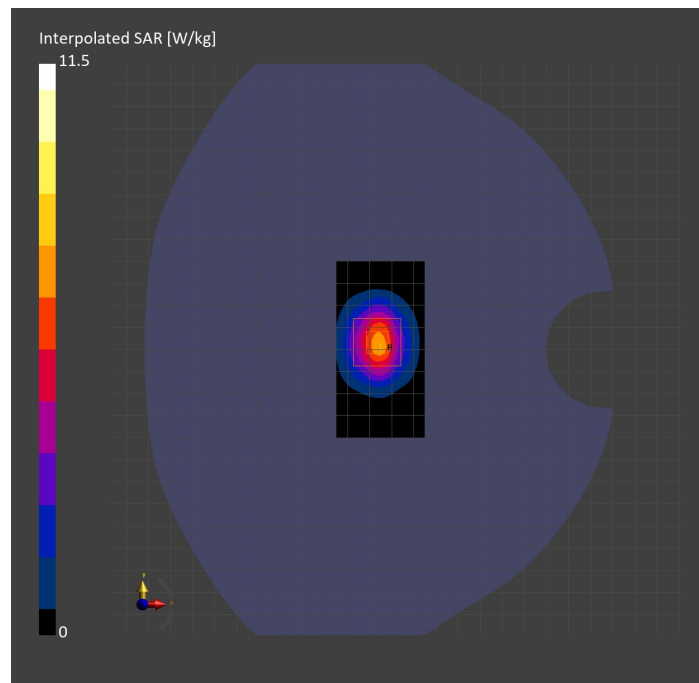
Probe   Calibration Date	EX3DV4 - SN3749   2023-01-27	Phantom	Twin-SAM V8.0 (30deg probe tilt)
DAE   Calibration Date	DAE4 Sn1357   2023-01-27	TSL Type	HBBL-600-10000
Software Version	16.2.4.2524		

## Scans Setup

	Area Scan	Zoom Scan
Grid Extents [mm]	40.0 x 80.0	30.0 x 30.0 x 30.0
Grid Steps [mm]	10.0 x 10.0	5.0 x 5.0 x 1.5
Sensor Surface [mm]	3.0	1.4
Graded Grid	N/A	Yes
M2/M1 [%]		81.3
Dist 3dB Peak [mm]		9.0

## Measurement Results

	Area Scan	Zoom Scan
psSAR1g [W/Kg]	5.58	5.75
psSAR10g [W/Kg]	2.56	2.68
Power Drift [dB]	N/A	-0.00



# System Performance Check Report for D835V2 - SN4d002

## Exposure Conditions

Frequency [MHz]   Channel Number	835.000   0	TSL Permittivity	43.3
Group   UID	CW   0--	TSL Conductivity [S/m]	0.945
Conversion Factor	7.83	Phantom Section   TSL	Flat   HSL

## Hardware Setup

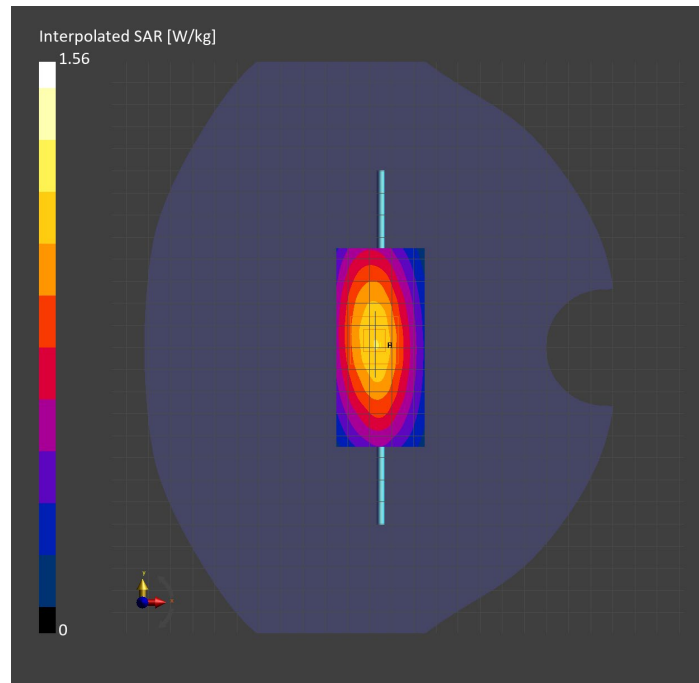
Probe   Calibration Date	EX3DV4 - SN3749   2023-01-27	Phantom	Twin-SAM V8.0 (30deg probe tilt)
DAE   Calibration Date	DAE4 Sn1357   2023-01-27	TSL Type	HBBL-600-10000
Software Version	16.2.4.2524		

## Scans Setup

	Area Scan	Zoom Scan
Grid Extents [mm]	40.0 x 90.0	30.0 x 30.0 x 30.0
Grid Steps [mm]	10.0 x 15.0	6.0 x 6.0 x 1.5
Sensor Surface [mm]	3.0	1.4
Graded Grid	N/A	Yes
M2/M1 [%]		89.8
Dist 3dB Peak [mm]		15.6

## Measurement Results

	Area Scan	Zoom Scan
psSAR1g [W/Kg]	1.02	<b>1.07</b>
psSAR10g [W/Kg]	0.674	<b>0.703</b>
Power Drift [dB]	N/A	-0.10



# System Performance Check Report for D3500V2 - SN1011

## Exposure Conditions

Frequency [MHz]   Channel Number	3500.000   0	TSL Permittivity	38.8
Group   UID	CW   0--	TSL Conductivity [S/m]	2.78
Conversion Factor	6.78	Phantom Section   TSL	Flat   HSL

## Hardware Setup

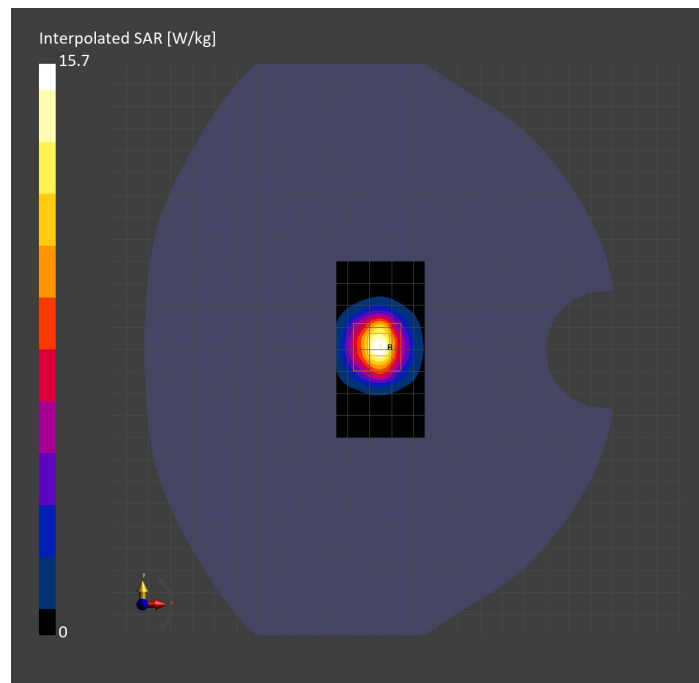
Probe   Calibration Date	EX3DV4 - SN3989   2023-01-26	Phantom	Twin-SAM V8.0 (30deg probe tilt)
DAE   Calibration Date	DAE4 Sn1257   2022-09-20	TSL Type	HBBL-600-10000
Software Version	16.2.4.2524		

## Scans Setup

	Area Scan	Zoom Scan
Grid Extents [mm]	40.0 x 80.0	28.0 x 28.0 x 28.0
Grid Steps [mm]	10.0 x 10.0	5.0 x 5.0 x 1.4
Sensor Surface [mm]	3.0	1.4
Graded Grid	N/A	Yes
M2/M1 [%]		76.1
Dist 3dB Peak [mm]		8.3

## Measurement Results

	Area Scan	Zoom Scan
psSAR1g [W/Kg]	6.08	<b>6.18</b>
psSAR10g [W/Kg]	2.38	<b>2.39</b>
Power Drift [dB]	N/A	0.02



# System Performance Check Report for D3700V2 - SN1110

## Exposure Conditions

Frequency [MHz]   Channel Number	3700.000   0	TSL Permittivity	38.5
Group   UID	CW   0--	TSL Conductivity [S/m]	2.97
Conversion Factor	6.94	Phantom Section   TSL	Flat   HSL

## Hardware Setup

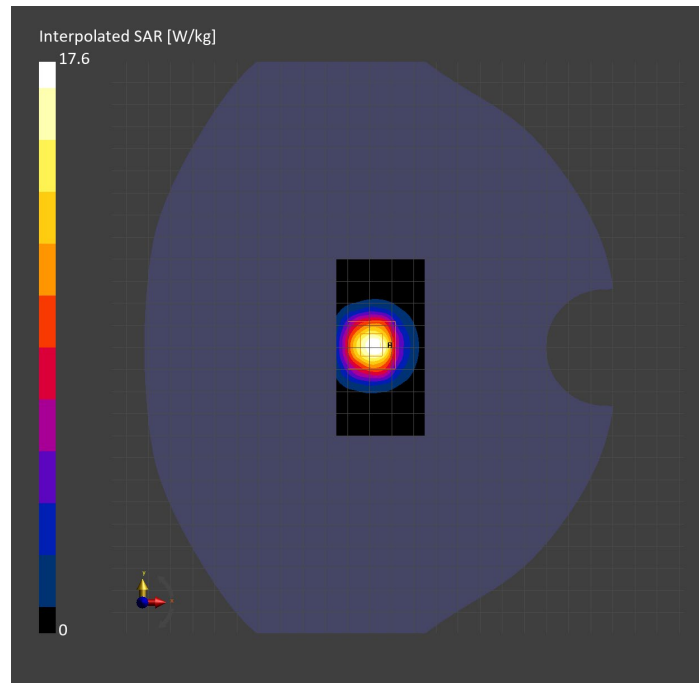
Probe   Calibration Date	EX3DV4 - SN3989   2023-01-26	Phantom	Twin-SAM V8.0 (30deg probe tilt)
DAE   Calibration Date	DAE4 Sn1257   2022-09-20	TSL Type	HBBL-600-10000
Software Version	16.2.4.2524		

## Scans Setup

	Area Scan	Zoom Scan
Grid Extents [mm]	40.0 x 80.0	28.0 x 28.0 x 28.0
Grid Steps [mm]	10.0 x 10.0	5.0 x 5.0 x 1.4
Sensor Surface [mm]	3.0	1.4
Graded Grid	N/A	Yes
M2/M1 [%]		75.9
Dist 3dB Peak [mm]		8.3

## Measurement Results

	Area Scan	Zoom Scan
psSAR1g [W/Kg]	6.34	<b>6.82</b>
psSAR10g [W/Kg]	2.50	<b>2.57</b>
Power Drift [dB]	N/A	-0.02



# System Performance Check Report for D1750V2 - SN1053

## Exposure Conditions

Frequency [MHz]   Channel Number	1750.000   0	TSL Permittivity	38.5
Group   UID	CW   0--	TSL Conductivity [S/m]	1.33
Conversion Factor	8.98	Phantom Section   TSL	Flat   HSL

## Hardware Setup

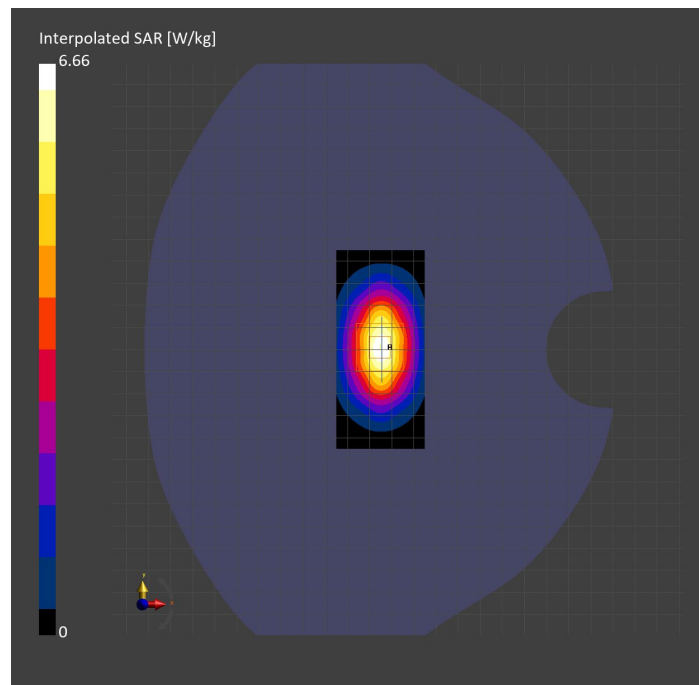
Probe   Calibration Date	EX3DV4 - SN3989   2023-01-26	Phantom	Twin-SAM V8.0 (30deg probe tilt)
DAE   Calibration Date	DAE4 Sn1257   2022-09-20	TSL Type	HBBL-600-10000
Software Version	16.2.4.2524		

## Scans Setup

	Area Scan	Zoom Scan
Grid Extents [mm]	40.0 x 90.0	30.0 x 30.0 x 30.0
Grid Steps [mm]	10.0 x 15.0	6.0 x 6.0 x 1.5
Sensor Surface [mm]	3.0	1.4
Graded Grid	N/A	Yes
M2/M1 [%]		84.1
Dist 3dB Peak [mm]		10.8

## Measurement Results

	Area Scan	Zoom Scan
psSAR1g [W/Kg]	3.86	3.76
psSAR10g [W/Kg]	2.07	2.04
Power Drift [dB]	N/A	-0.05



# System Performance Check Report for D1640V2 - SN334

## Exposure Conditions

Frequency [MHz]   Channel Number	1640.000   0	TSL Permittivity	41.3
Group   UID	CW   0--	TSL Conductivity [S/m]	1.25
Conversion Factor	8.86	Phantom Section   TSL	Flat   HSL

## Hardware Setup

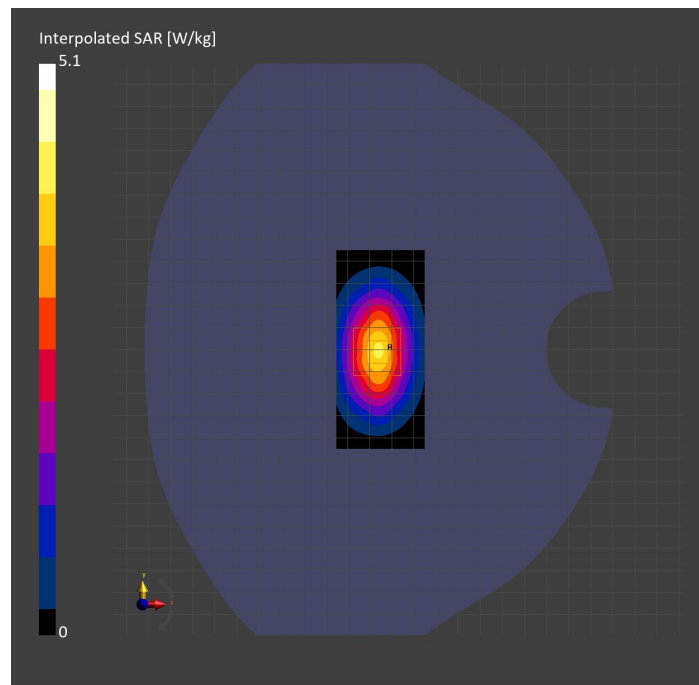
Probe   Calibration Date	EX3DV4 - SN3989   2023-01-26	Phantom	Twin-SAM V8.0 (30deg probe tilt)
DAE   Calibration Date	DAE4 Sn1257   2022-09-20	TSL Type	HBBL-600-10000
Software Version	16.2.4.2524		

## Scans Setup

	Area Scan	Zoom Scan
Grid Extents [mm]	40.0 x 90.0	30.0 x 30.0 x 30.0
Grid Steps [mm]	10.0 x 15.0	6.0 x 6.0 x 1.5
Sensor Surface [mm]	3.0	1.4
Graded Grid	N/A	Yes
M2/M1 [%]		86.6
Dist 3dB Peak [mm]		11.4

## Measurement Results

	Area Scan	Zoom Scan
psSAR1g [W/Kg]	3.20	3.10
psSAR10g [W/Kg]	1.77	1.74
Power Drift [dB]	N/A	-0.14



# System Performance Check Report for D1750V2 - SN1050

## Exposure Conditions

Frequency [MHz]   Channel Number	1750.000   0	TSL Permittivity	41.6
Group   UID	CW   0--	TSL Conductivity [S/m]	1.34
Conversion Factor	8.66	Phantom Section   TSL	Flat   HSL

## Hardware Setup

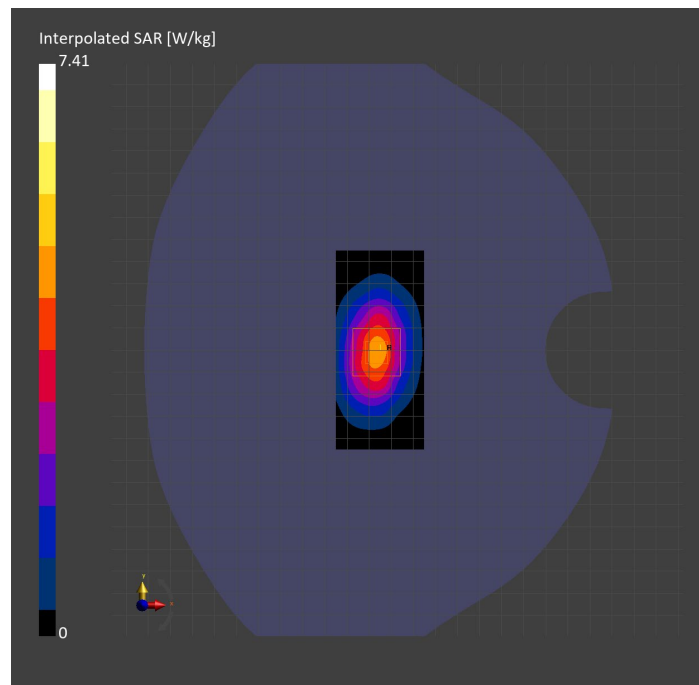
Probe   Calibration Date	EX3DV4 - SN7569   2023-04-18	Phantom	Twin-SAM V8.0 (30deg probe tilt)
DAE   Calibration Date	DAE4 Sn1547   2023-04-18	TSL Type	HBBL-600-10000
Software Version	16.2.4.2524		

## Scans Setup

	Area Scan	Zoom Scan
Grid Extents [mm]	40.0 x 90.0	30.0 x 30.0 x 30.0
Grid Steps [mm]	10.0 x 15.0	6.0 x 6.0 x 1.5
Sensor Surface [mm]	3.0	1.4
Graded Grid	N/A	Yes
M2/M1 [%]		80.3
Dist 3dB Peak [mm]		10.8

## Measurement Results

	Area Scan	Zoom Scan
psSAR1g [W/Kg]	3.88	<b>3.82</b>
psSAR10g [W/Kg]	2.09	<b>2.04</b>
Power Drift [dB]	N/A	-0.03



# System Performance Check Report for D1900V2 - SN5d163

## Exposure Conditions

Frequency [MHz]   Channel Number	1900.000   0	TSL Permittivity	41.7
Group   UID	CW   0--	TSL Conductivity [S/m]	1.41
Conversion Factor	8.43	Phantom Section   TSL	Flat   HSL

## Hardware Setup

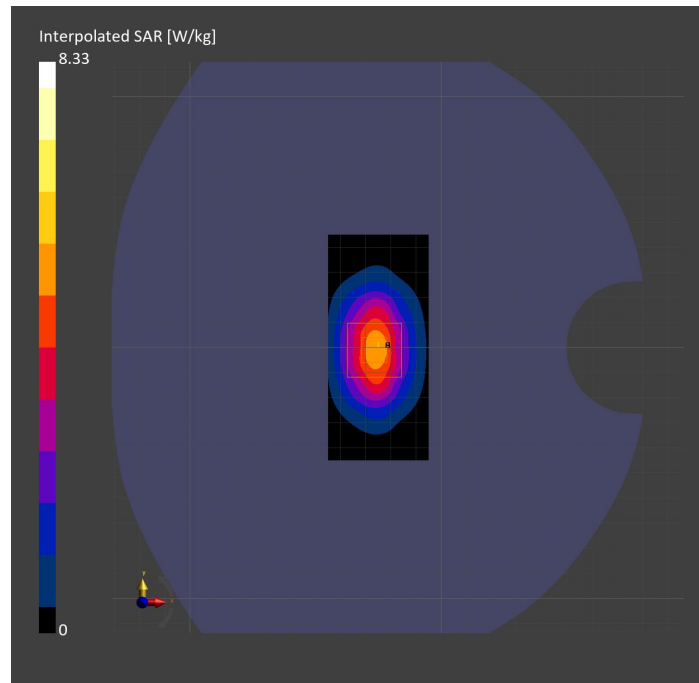
Probe   Calibration Date	EX3DV4 - SN3991   2022-09-22	Phantom	Twin-SAM V8.0 (30deg probe tilt)
DAE   Calibration Date	DAE4 Sn1674   2023-05-11	TSL Type	HBBL-600-10000
Software Version	16.2.4.2524		

## Scans Setup

	Area Scan	Zoom Scan
Grid Extents [mm]	40.0 x 90.0	30.0 x 30.0 x 30.0
Grid Steps [mm]	10.0 x 15.0	6.0 x 6.0 x 1.5
Sensor Surface [mm]	3.0	1.4
Graded Grid	N/A	Yes
M2/M1 [%]		80.8
Dist 3dB Peak [mm]		10.8

## Measurement Results

	Area Scan	Zoom Scan
psSAR1g [W/Kg]	4.40	<b>4.30</b>
psSAR10g [W/Kg]	2.30	<b>2.23</b>
Power Drift [dB]	N/A	-0.09





# System Performance Check Report for D2600V2 - SN1036

## Exposure Conditions

Frequency [MHz]   Channel Number	2600.000   0	TSL Permittivity	38.8
Group   UID	CW   0--	TSL Conductivity [S/m]	1.91
Conversion Factor	7.06	Phantom Section   TSL	Flat   HSL

## Hardware Setup

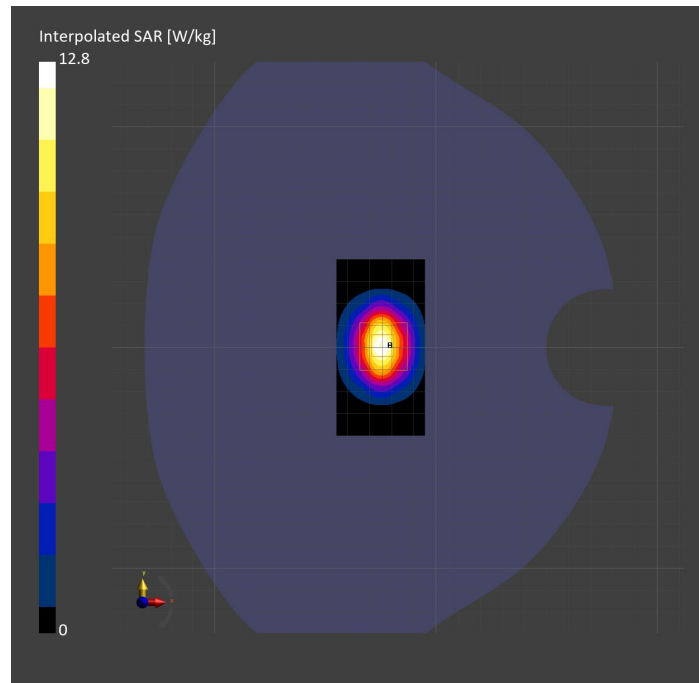
Probe   Calibration Date	EX3DV4 - SN7806   2023-04-04	Phantom	Twin-SAM V8.0 (30deg probe tilt)
DAE   Calibration Date	DAE4 Sn1784   2023-04-03	TSL Type	HBBL-600-10000
Software Version	16.2.4.2524		

## Scans Setup

	Area Scan	Zoom Scan
Grid Extents [mm]	40.0 x 80.0	30.0 x 30.0 x 30.0
Grid Steps [mm]	10.0 x 10.0	5.0 x 5.0 x 1.5
Sensor Surface [mm]	3.0	1.4
Graded Grid	N/A	Yes
M2/M1 [%]		78.3
Dist 3dB Peak [mm]		9.0

## Measurement Results

	Area Scan	Zoom Scan
psSAR1g [W/Kg]	5.86	5.97
psSAR10g [W/Kg]	2.63	2.71
Power Drift [dB]	N/A	-0.02



# System Performance Check Report for D835V2 - SN4d002

## Exposure Conditions

Frequency [MHz]   Channel Number	835.000   0	TSL Permittivity	41.6
Group   UID	CW   0--	TSL Conductivity [S/m]	0.894
Conversion Factor	8.76	Phantom Section   TSL	Flat   HSL

## Hardware Setup

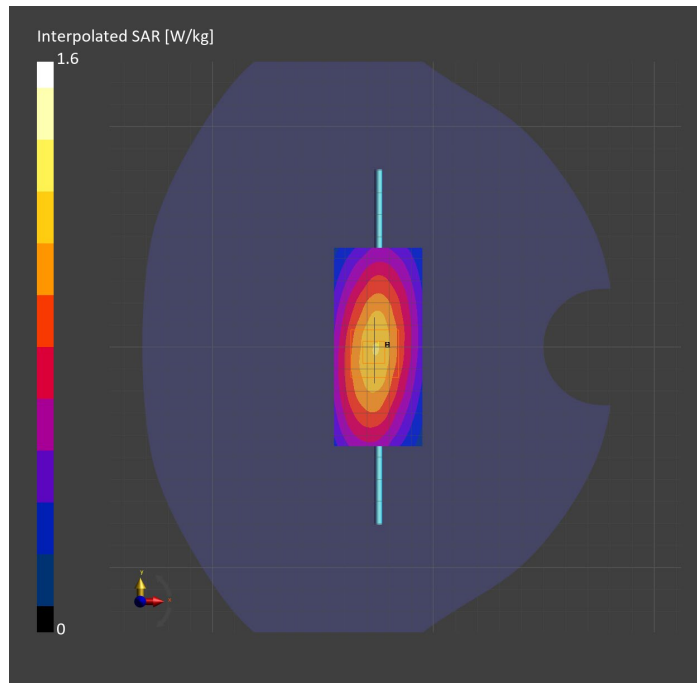
Probe   Calibration Date	EX3DV4 - SN7806   2023-04-04	Phantom	Twin-SAM V8.0 (30deg probe tilt)
DAE   Calibration Date	DAE4 Sn1784   2023-04-03	TSL Type	HBBL-600-10000
Software Version	16.2.4.2524		

## Scans Setup

	Area Scan	Zoom Scan
Grid Extents [mm]	40.0 x 90.0	30.0 x 30.0 x 30.0
Grid Steps [mm]	10.0 x 15.0	6.0 x 6.0 x 1.5
Sensor Surface [mm]	3.0	1.4
Graded Grid	N/A	Yes
M2/M1 [%]		87.2
Dist 3dB Peak [mm]		17.2

## Measurement Results

	Area Scan	Zoom Scan
psSAR1g [W/Kg]	1.04	<b>1.05</b>
psSAR10g [W/Kg]	0.690	<b>0.697</b>
Power Drift [dB]	N/A	0.01



# System Performance Check Report for D1900V2 - SN5d140

## Exposure Conditions

Frequency [MHz]   Channel Number	1900.000   0	TSL Permittivity	38.4
Group   UID	CW   0--	TSL Conductivity [S/m]	1.42
Conversion Factor	7.53	Phantom Section   TSL	Flat   HSL

## Hardware Setup

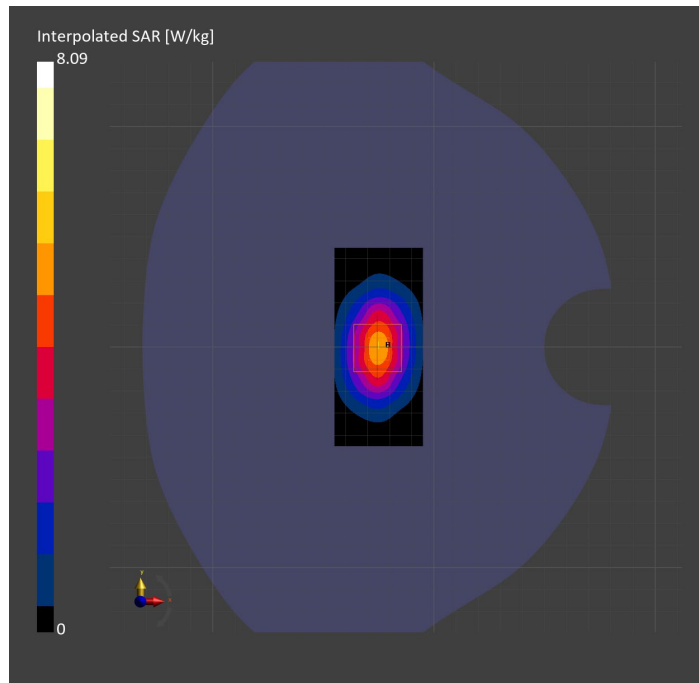
Probe   Calibration Date	EX3DV4 - SN7807   2023-04-11	Phantom	Twin-SAM V8.0 (30deg probe tilt)
DAE   Calibration Date	DAE4 Sn1799   2023-04-04	TSL Type	HBBL-600-10000
Software Version	16.2.4.2524		

## Scans Setup

	Area Scan	Zoom Scan
Grid Extents [mm]	40.0 x 90.0	30.0 x 30.0 x 30.0
Grid Steps [mm]	10.0 x 15.0	6.0 x 6.0 x 1.5
Sensor Surface [mm]	3.0	1.4
Graded Grid	N/A	Yes
M2/M1 [%]		81.8
Dist 3dB Peak [mm]		10.3

## Measurement Results

	Area Scan	Zoom Scan
psSAR1g [W/Kg]	4.29	<b>4.30</b>
psSAR10g [W/Kg]	2.24	<b>2.25</b>
Power Drift [dB]	N/A	-0.00



# System Performance Check Report for D1900V2 - SN5d163

## Exposure Conditions

Frequency [MHz]   Channel Number	1900.000   0	TSL Permittivity	38.2
Group   UID	CW   0--	TSL Conductivity [S/m]	1.45
Conversion Factor	7.53	Phantom Section   TSL	Flat   HSL

## Hardware Setup

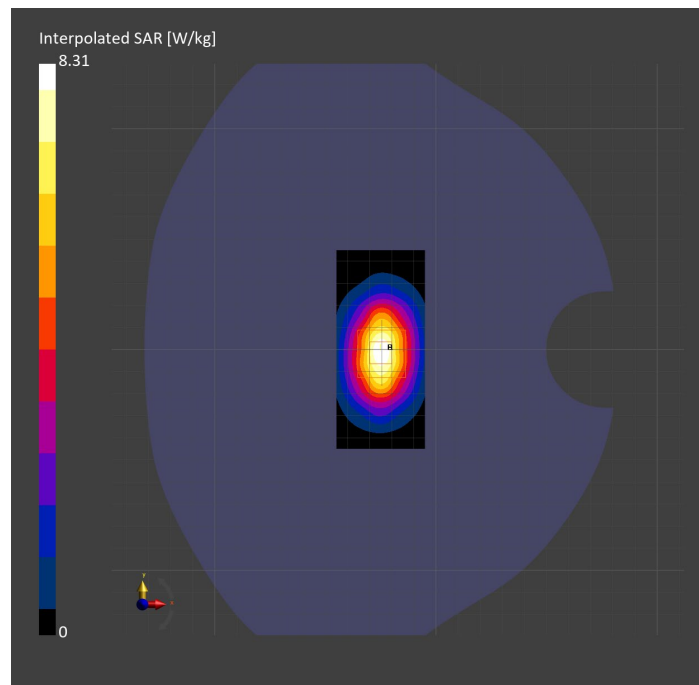
Probe   Calibration Date	EX3DV4 - SN7807   2023-04-11	Phantom	Twin-SAM V8.0 (30deg probe tilt)
DAE   Calibration Date	DAE4 Sn1799   2023-04-04	TSL Type	HBBL-600-10000
Software Version	16.2.4.2524		

## Scans Setup

	Area Scan	Zoom Scan
Grid Extents [mm]	40.0 x 90.0	30.0 x 30.0 x 30.0
Grid Steps [mm]	10.0 x 15.0	6.0 x 6.0 x 1.5
Sensor Surface [mm]	3.0	1.4
Graded Grid	N/A	Yes
M2/M1 [%]		79.3
Dist 3dB Peak [mm]		10.9

## Measurement Results

	Area Scan	Zoom Scan
psSAR1g [W/Kg]	4.17	<b>4.22</b>
psSAR10g [W/Kg]	2.18	<b>2.20</b>
Power Drift [dB]	N/A	-0.05



# System Performance Check Report for D750V3 - SN1019

## Exposure Conditions

Frequency [MHz]   Channel Number	750.000   0	TSL Permittivity	44.3
Group   UID	CW   0--	TSL Conductivity [S/m]	0.851
Conversion Factor	10.62	Phantom Section   TSL	Flat   HSL

## Hardware Setup

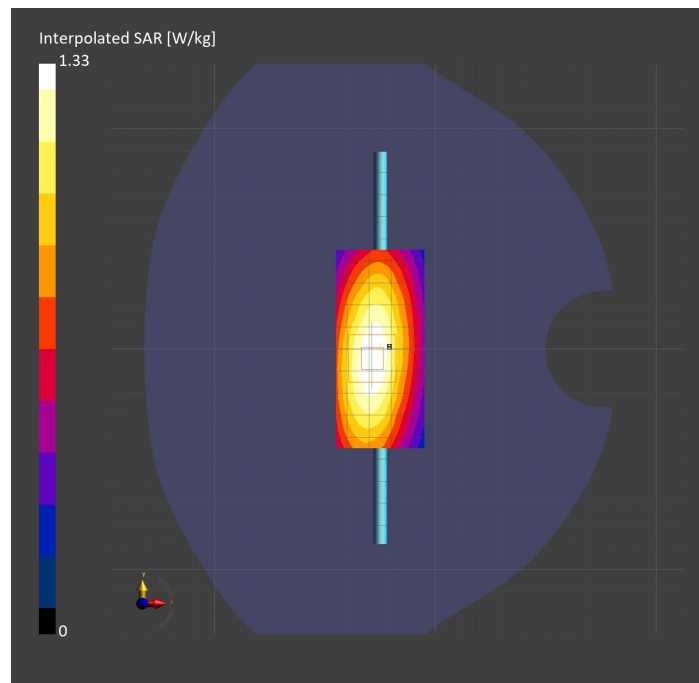
Probe   Calibration Date	EX3DV4 - SN7589   2023-04-18	Phantom	Twin-SAM V5.0 (30deg probe tilt)
DAE   Calibration Date	DAE4 Sn1544   2023-01-24	TSL Type	HBBL-600-10000
Software Version	16.2.4.2524		

## Scans Setup

	Area Scan	Zoom Scan
Grid Extents [mm]	40.0 x 90.0	30.0 x 30.0 x 30.0
Grid Steps [mm]	10.0 x 15.0	6.0 x 6.0 x 1.5
Sensor Surface [mm]	3.0	1.4
Graded Grid	N/A	Yes
M2/M1 [%]		88.1
Dist 3dB Peak [mm]		> 15.0

## Measurement Results

	Area Scan	Zoom Scan
psSAR1g [W/Kg]	0.899	<b>0.897</b>
psSAR10g [W/Kg]	0.605	<b>0.602</b>
Power Drift [dB]	N/A	-0.02



# System Performance Check Report for D2600V2 - SN1036

## Exposure Conditions

Frequency [MHz]   Channel Number	2600.000   0	TSL Permittivity	40.1
Group   UID	CW   0--	TSL Conductivity [S/m]	1.89
Conversion Factor	7.64	Phantom Section   TSL	Flat   HSL

## Hardware Setup

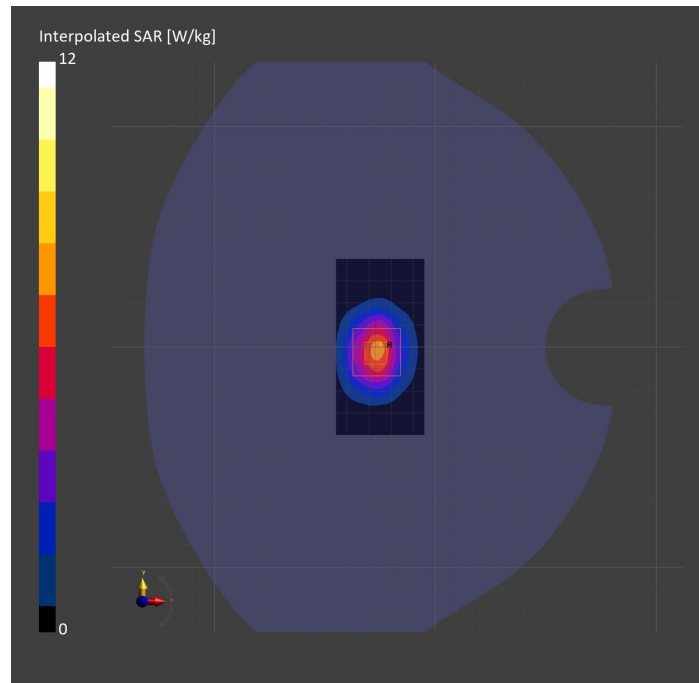
Probe   Calibration Date	EX3DV4 - SN7589   2023-04-18	Phantom	Twin-SAM V5.0 (30deg probe tilt)
DAE   Calibration Date	DAE4 Sn1544   2023-01-24	TSL Type	HBBL-600-10000
Software Version	16.2.4.2524		

## Scans Setup

	Area Scan	Zoom Scan
Grid Extents [mm]	40.0 x 80.0	30.0 x 30.0 x 30.0
Grid Steps [mm]	10.0 x 10.0	5.0 x 5.0 x 1.5
Sensor Surface [mm]	3.0	1.4
Graded Grid	N/A	Yes
M2/M1 [%]		79.2
Dist 3dB Peak [mm]		9.1

## Measurement Results

	Area Scan	Zoom Scan
psSAR1g [W/Kg]	5.74	5.71
psSAR10g [W/Kg]	2.63	2.63
Power Drift [dB]	N/A	0.02



# System Performance Check Report for D750V3 - SN1019

## Exposure Conditions

Frequency [MHz]   Channel Number	750.000   0	TSL Permittivity	43.2
Group   UID	CW   0--	TSL Conductivity [S/m]	0.878
Conversion Factor	8.93	Phantom Section   TSL	Flat   HSL

## Hardware Setup

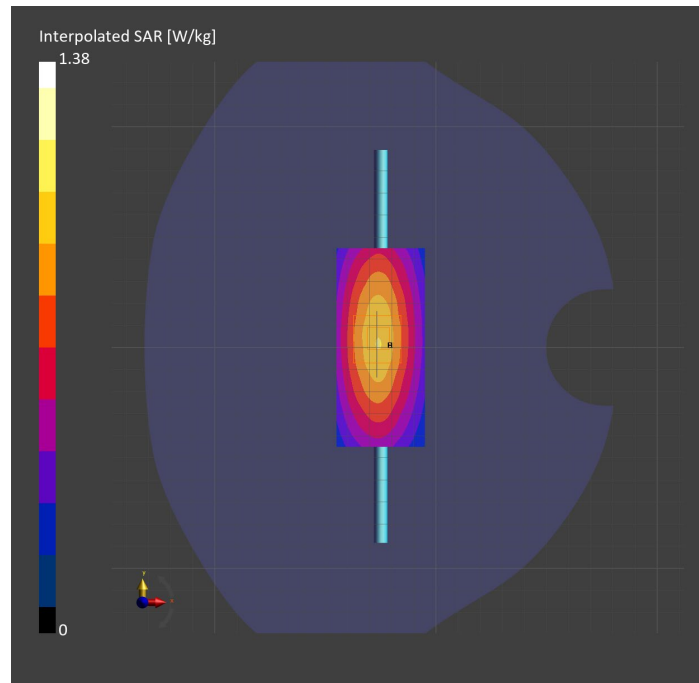
Probe   Calibration Date	EX3DV4 - SN7448   2023-02-14	Phantom	Twin-SAM V5.0 (30deg probe tilt)
DAE   Calibration Date	DAE4 Sn1472   2023-01-23	TSL Type	HBBL-600-10000
Software Version	16.2.4.2524		

## Scans Setup

	Area Scan	Zoom Scan
Grid Extents [mm]	40.0 x 90.0	30.0 x 30.0 x 30.0
Grid Steps [mm]	10.0 x 15.0	6.0 x 6.0 x 1.5
Sensor Surface [mm]	3.0	1.4
Graded Grid	N/A	Yes
M2/M1 [%]		87.6
Dist 3dB Peak [mm]		> 15.0

## Measurement Results

	Area Scan	Zoom Scan
psSAR1g [W/Kg]	0.905	<b>0.919</b>
psSAR10g [W/Kg]	0.606	<b>0.606</b>
Power Drift [dB]	N/A	-0.00



# System Performance Check Report for D2600V2 - SN1036

## Exposure Conditions

Frequency [MHz]   Channel Number	2600.000   0	TSL Permittivity	39.6
Group   UID	CW   0--	TSL Conductivity [S/m]	1.93
Conversion Factor	7.39	Phantom Section   TSL	Flat   HSL

## Hardware Setup

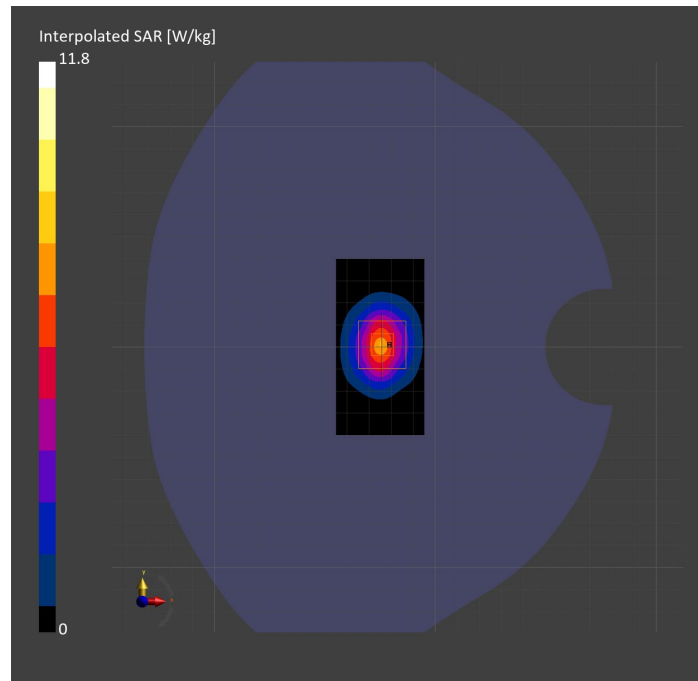
Probe   Calibration Date	EX3DV4 - SN7448   2023-02-14	Phantom	Twin-SAM V5.0 (30deg probe tilt)
DAE   Calibration Date	DAE4 Sn1472   2023-01-23	TSL Type	HBBL-600-10000
Software Version	16.2.4.2524		

## Scans Setup

	Area Scan	Zoom Scan
Grid Extents [mm]	40.0 x 80.0	30.0 x 30.0 x 30.0
Grid Steps [mm]	10.0 x 10.0	5.0 x 5.0 x 1.5
Sensor Surface [mm]	3.0	1.4
Graded Grid	N/A	Yes
M2/M1 [%]		79.8
Dist 3dB Peak [mm]		9.0

## Measurement Results

	Area Scan	Zoom Scan
psSAR1g [W/Kg]	5.59	<b>5.58</b>
psSAR10g [W/Kg]	2.51	<b>2.53</b>
Power Drift [dB]	N/A	0.00





# System Performance Check Report for D2600V2 - SN1036

## Exposure Conditions

Frequency [MHz]   Channel Number	2600.000   0	TSL Permittivity	40.2
Group   UID	CW   0--	TSL Conductivity [S/m]	1.90
Conversion Factor	7.33	Phantom Section   TSL	Flat   HSL

## Hardware Setup

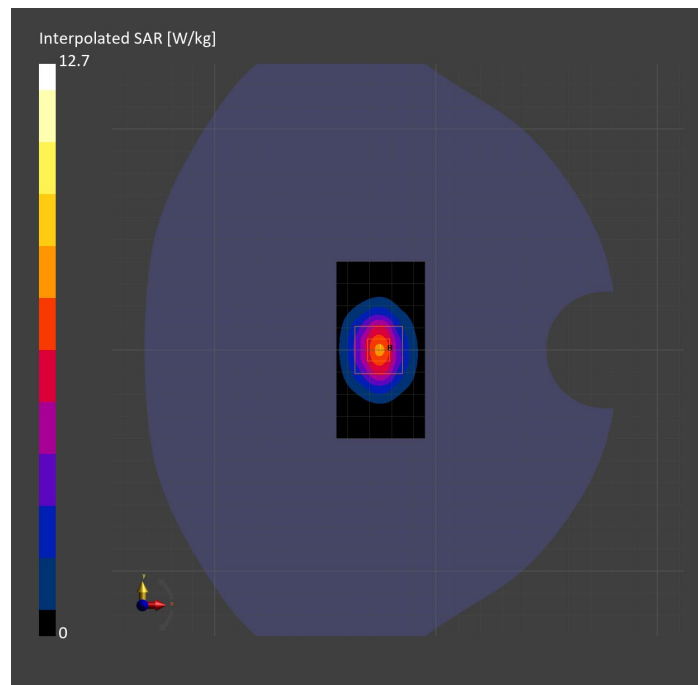
Probe   Calibration Date	EX3DV4 - SN7808   2023-04-18	Phantom	Twin-SAM V8.0 (30deg probe tilt)
DAE   Calibration Date	DAE4 Sn1796   2023-04-03	TSL Type	HBBL-600-10000
Software Version	16.2.4.2524		

## Scans Setup

	Area Scan	Zoom Scan
Grid Extents [mm]	40.0 x 80.0	30.0 x 30.0 x 30.0
Grid Steps [mm]	10.0 x 10.0	5.0 x 5.0 x 1.5
Sensor Surface [mm]	3.0	1.4
Graded Grid	N/A	Yes
M2/M1 [%]		79.2
Dist 3dB Peak [mm]		9.0

## Measurement Results

	Area Scan	Zoom Scan
psSAR1g [W/Kg]	5.73	<b>5.96</b>
psSAR10g [W/Kg]	2.54	<b>2.72</b>
Power Drift [dB]	N/A	-0.16



# System Performance Check Report for D3700V2 - SN1110

## Exposure Conditions

Frequency [MHz]   Channel Number	3700.000   0	TSL Permittivity	38.3
Group   UID	CW   0--	TSL Conductivity [S/m]	2.98
Conversion Factor	6.66	Phantom Section   TSL	Flat   HSL

## Hardware Setup

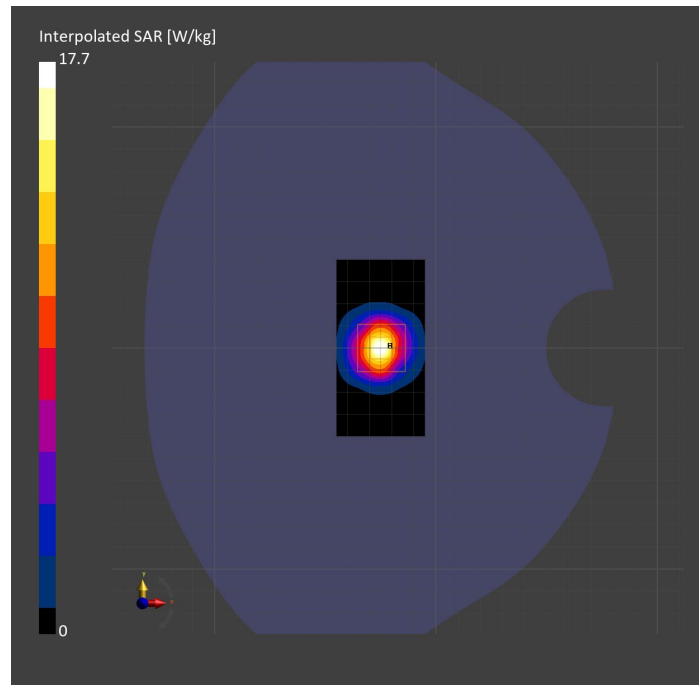
Probe   Calibration Date	EX3DV4 - SN3990   2023-02-17	Phantom	Twin-SAM V5.0 (30deg probe tilt)
DAE   Calibration Date	DAE4 Sn1545   2023-02-14	TSL Type	HBBL-600-10000
Software Version	16.2.4.2524		

## Scans Setup

	Area Scan	Zoom Scan
Grid Extents [mm]	40.0 x 80.0	28.0 x 28.0 x 28.0
Grid Steps [mm]	10.0 x 10.0	5.0 x 5.0 x 1.4
Sensor Surface [mm]	3.0	1.4
Graded Grid	N/A	Yes
M2/M1 [%]		75.3
Dist 3dB Peak [mm]		8.6

## Measurement Results

	Area Scan	Zoom Scan
psSAR1g [W/Kg]	6.62	<b>6.74</b>
psSAR10g [W/Kg]	2.45	<b>2.55</b>
Power Drift [dB]	N/A	0.00



# System Performance Check Report for D3500V2 - SN1011

## Exposure Conditions

Frequency [MHz]   Channel Number	3500.000   0	TSL Permittivity	38.4
Group   UID	CW   0--	TSL Conductivity [S/m]	2.77
Conversion Factor	6.79	Phantom Section   TSL	Flat   HSL

## Hardware Setup

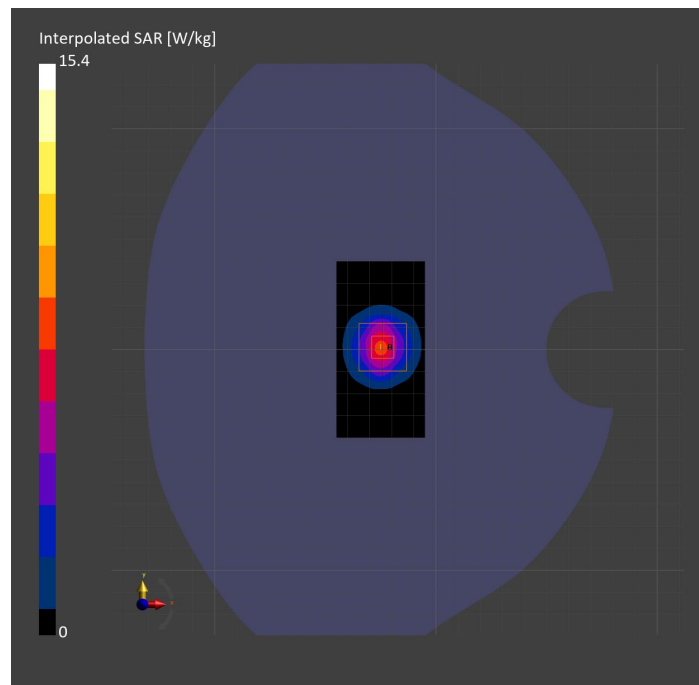
Probe   Calibration Date	EX3DV4 - SN3990   2023-02-17	Phantom	Twin-SAM V5.0 (30deg probe tilt)
DAE   Calibration Date	DAE4 Sn1545   2023-02-14	TSL Type	HBBL-600-10000
Software Version	16.2.4.2524		

## Scans Setup

	Area Scan	Zoom Scan
Grid Extents [mm]	40.0 x 80.0	28.0 x 28.0 x 28.0
Grid Steps [mm]	10.0 x 10.0	5.0 x 5.0 x 1.4
Sensor Surface [mm]	3.0	1.4
Graded Grid	N/A	Yes
M2/M1 [%]		76.4
Dist 3dB Peak [mm]		8.1

## Measurement Results

	Area Scan	Zoom Scan
psSAR1g [W/Kg]	5.89	<b>6.08</b>
psSAR10g [W/Kg]	2.30	<b>2.40</b>
Power Drift [dB]	N/A	-0.02



# System Performance Check Report for D2600V2 - SN1036

## Exposure Conditions

Frequency [MHz]   Channel Number	2600.000   0	TSL Permittivity	37.9
Group   UID	CW   0--	TSL Conductivity [S/m]	2.01
Conversion Factor	7.32	Phantom Section   TSL	Flat   HSL

## Hardware Setup

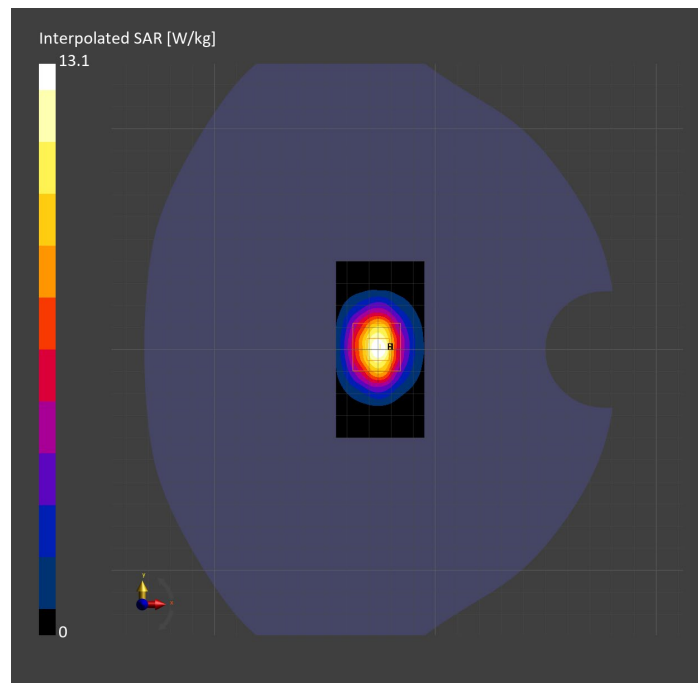
Probe   Calibration Date	EX3DV4 - SN3885   2022-09-20	Phantom	Twin-SAM V5.0 (30deg probe tilt)
DAE   Calibration Date	DAE4 Sn1548   2023-02-14	TSL Type	HBBL-600-10000
Software Version	16.2.4.2524		

## Scans Setup

	Area Scan	Zoom Scan
Grid Extents [mm]	40.0 x 80.0	30.0 x 30.0 x 30.0
Grid Steps [mm]	10.0 x 10.0	5.0 x 5.0 x 1.5
Sensor Surface [mm]	3.0	1.4
Graded Grid	N/A	Yes
M2/M1 [%]		78.8
Dist 3dB Peak [mm]		9.0

## Measurement Results

	Area Scan	Zoom Scan
psSAR1g [W/Kg]	6.09	<b>6.06</b>
psSAR10g [W/Kg]	2.73	<b>2.72</b>
Power Drift [dB]	N/A	0.01



# System Performance Check Report for D2300V2 - SN1058

## Exposure Conditions

Frequency [MHz]   Channel Number	2300.000   0	TSL Permittivity	37.9
Group   UID	CW   0--	TSL Conductivity [S/m]	1.66
Conversion Factor	7.71	Phantom Section   TSL	Flat   HSL

## Hardware Setup

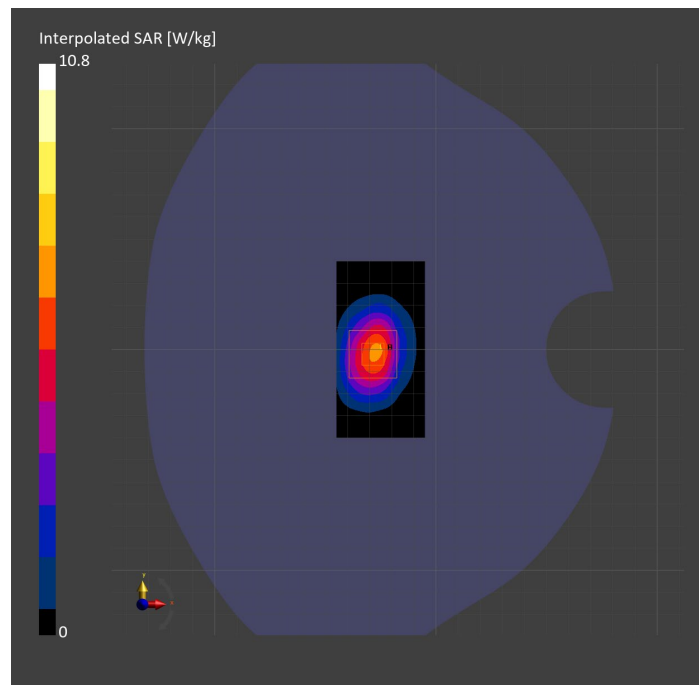
Probe   Calibration Date	EX3DV4 - SN7482   2023-04-18	Phantom	Twin-SAM V8.0 (30deg probe tilt)
DAE   Calibration Date	DAE4 Sn1380   2023-02-14	TSL Type	HBBL-600-10000
Software Version	16.2.4.2524		

## Scans Setup

	Area Scan	Zoom Scan
Grid Extents [mm]	40.0 x 80.0	30.0 x 30.0 x 30.0
Grid Steps [mm]	10.0 x 10.0	5.0 x 5.0 x 1.5
Sensor Surface [mm]	3.0	1.4
Graded Grid	N/A	Yes
M2/M1 [%]		79.1
Dist 3dB Peak [mm]		9.1

## Measurement Results

	Area Scan	Zoom Scan
psSAR1g [W/Kg]	5.18	<b>5.25</b>
psSAR10g [W/Kg]	2.55	<b>2.52</b>
Power Drift [dB]	N/A	-0.09



# System Performance Check Report for D3500V2 - SN1060

## Exposure Conditions

Frequency [MHz]   Channel Number	3500.000   0	TSL Permittivity	39.5
Group   UID	CW   0--	TSL Conductivity [S/m]	2.78
Conversion Factor	6.87	Phantom Section   TSL	Flat   HSL

## Hardware Setup

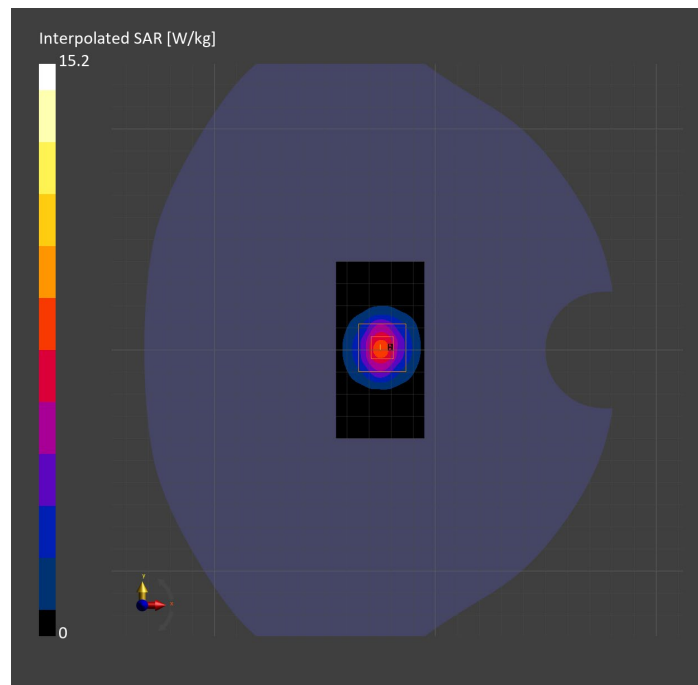
Probe   Calibration Date	EX3DV4 - SN7335   2023-01-26	Phantom	Twin-SAM V8.0 (30deg probe tilt)
DAE   Calibration Date	DAE4ip Sn1619   2023-04-18	TSL Type	HBBL-600-10000
Software Version	16.2.4.2524		

## Scans Setup

	Area Scan	Zoom Scan
Grid Extents [mm]	40.0 x 80.0	28.0 x 28.0 x 28.0
Grid Steps [mm]	10.0 x 10.0	5.0 x 5.0 x 1.4
Sensor Surface [mm]	3.0	1.4
Graded Grid	N/A	Yes
M2/M1 [%]		77.2
Dist 3dB Peak [mm]		8.6

## Measurement Results

	Area Scan	Zoom Scan
psSAR1g [W/Kg]	6.06	<b>6.10</b>
psSAR10g [W/Kg]	2.33	<b>2.36</b>
Power Drift [dB]	N/A	-0.00



# System Performance Check Report for D3700V2 - SN1110

## Exposure Conditions

Frequency [MHz]   Channel Number	3700.000   0	TSL Permittivity	37.4
Group   UID	CW   0--	TSL Conductivity [S/m]	2.97
Conversion Factor	6.92	Phantom Section   TSL	Flat   HSL

## Hardware Setup

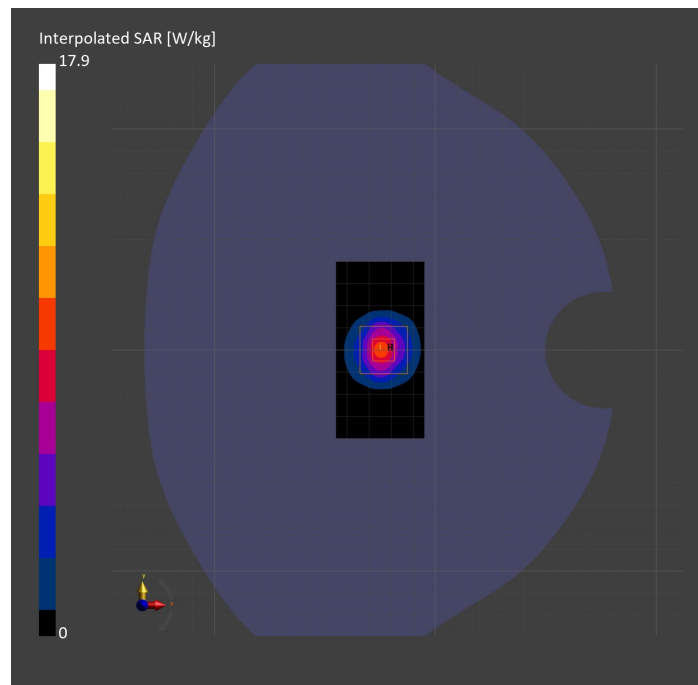
Probe   Calibration Date	EX3DV4 - SN7335   2023-01-26	Phantom	Twin-SAM V8.0 (30deg probe tilt)
DAE   Calibration Date	DAE4ip Sn1619   2023-04-18	TSL Type	HBBL-600-10000
Software Version	16.2.4.2524		

## Scans Setup

	Area Scan	Zoom Scan
Grid Extents [mm]	40.0 x 80.0	28.0 x 28.0 x 28.0
Grid Steps [mm]	10.0 x 10.0	5.0 x 5.0 x 1.4
Sensor Surface [mm]	3.0	1.4
Graded Grid	N/A	Yes
M2/M1 [%]		76.2
Dist 3dB Peak [mm]		8.6

## Measurement Results

	Area Scan	Zoom Scan
psSAR1g [W/Kg]	6.93	<b>6.83</b>
psSAR10g [W/Kg]	2.57	<b>2.56</b>
Power Drift [dB]	N/A	-0.12



# System Performance Check Report for D3900V2 - SN1093

## Exposure Conditions

Frequency [MHz]   Channel Number	3900.000   0	TSL Permittivity	39.3
Group   UID	CW   0--	TSL Conductivity [S/m]	3.16
Conversion Factor	6.15	Phantom Section   TSL	Flat   HSL

## Hardware Setup

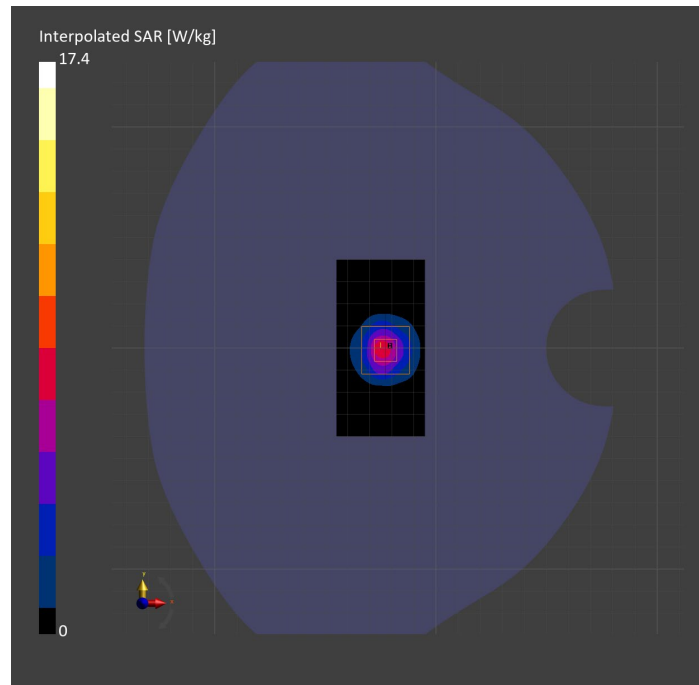
Probe   Calibration Date	EX3DV4 - SN7463   2023-04-19	Phantom	Twin-SAM V8.0 (30deg probe tilt)
DAE   Calibration Date	DAE4 Sn1673   2023-05-12	TSL Type	HBBL-600-10000
Software Version	16.2.4.2524		

## Scans Setup

	Area Scan	Zoom Scan
Grid Extents [mm]	40.0 x 80.0	28.0 x 28.0 x 28.0
Grid Steps [mm]	10.0 x 10.0	5.0 x 5.0 x 1.4
Sensor Surface [mm]	3.0	1.4
Graded Grid	N/A	Yes
M2/M1 [%]		74.5
Dist 3dB Peak [mm]		8.1

## Measurement Results

	Area Scan	Zoom Scan
psSAR1g [W/Kg]	5.73	<b>6.36</b>
psSAR10g [W/Kg]	2.04	<b>2.27</b>
Power Drift [dB]	N/A	-0.20





# System Performance Check Report for D3500V2 - SN1011

## Exposure Conditions

Frequency [MHz]   Channel Number	3500.000   0	TSL Permittivity	38.8
Group   UID	CW   0--	TSL Conductivity [S/m]	2.78
Conversion Factor	6.21	Phantom Section   TSL	Flat   HSL

## Hardware Setup

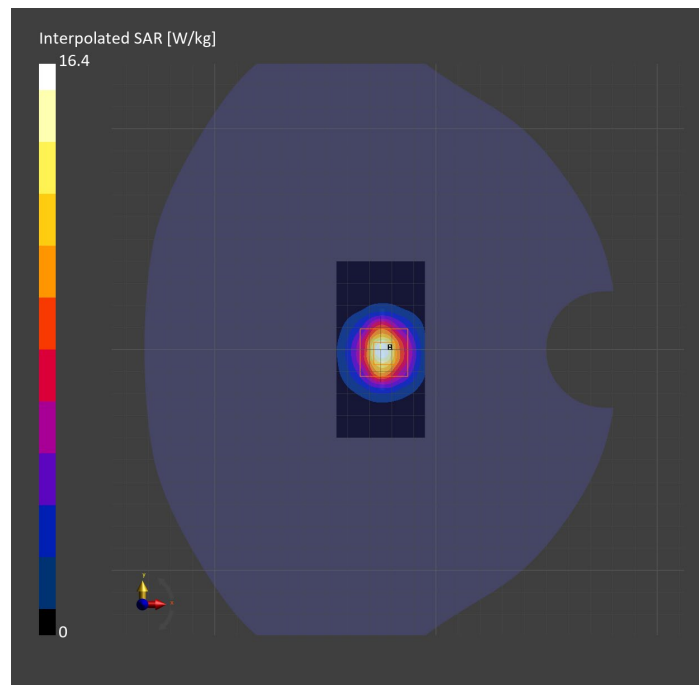
Probe   Calibration Date	EX3DV4 - SN7463   2023-04-19	Phantom	Twin-SAM V8.0 (30deg probe tilt)
DAE   Calibration Date	DAE4 Sn1673   2023-05-12	TSL Type	HBBL-600-10000
Software Version	16.2.4.2524		

## Scans Setup

	Area Scan	Zoom Scan
Grid Extents [mm]	40.0 x 80.0	28.0 x 28.0 x 28.0
Grid Steps [mm]	10.0 x 10.0	5.0 x 5.0 x 1.4
Sensor Surface [mm]	3.0	1.4
Graded Grid	N/A	Yes
M2/M1 [%]		74.3
Dist 3dB Peak [mm]		8.6

## Measurement Results

	Area Scan	Zoom Scan
psSAR1g [W/Kg]	6.09	<b>6.31</b>
psSAR10g [W/Kg]	2.37	<b>2.50</b>
Power Drift [dB]	N/A	0.00



# System Performance Check Report for D4900V2 - SN1065

## Exposure Conditions

Frequency [MHz]   Channel Number	4900.000   0	TSL Permittivity	35.9
Group   UID	CW   0--	TSL Conductivity [S/m]	4.29
Conversion Factor	6.28	Phantom Section   TSL	Flat   HSL

## Hardware Setup

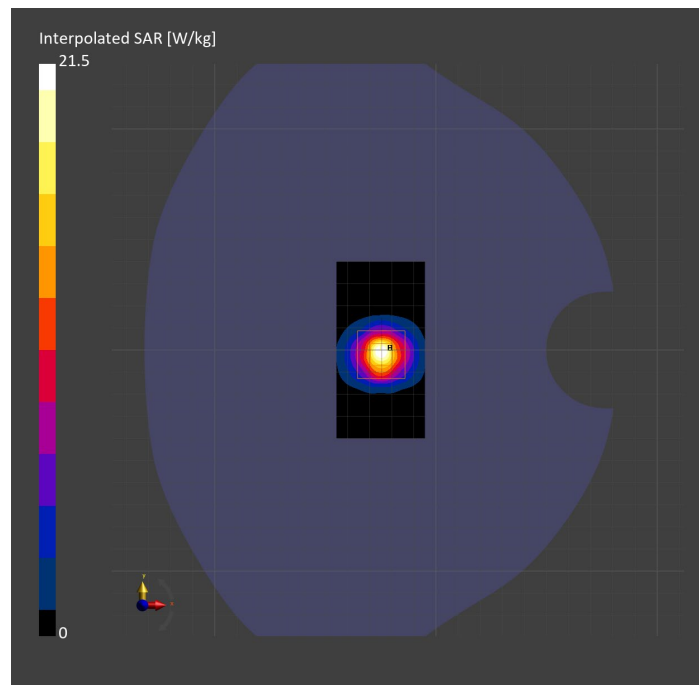
Probe   Calibration Date	EX3DV4 - SN7356   2023-03-17	Phantom	Twin-SAM V8.0 (30deg probe tilt)
DAE   Calibration Date	DAE4 Sn1798   2023-05-02	TSL Type	HBBL-600-10000
Software Version	16.2.4.2448		

## Scans Setup

	Area Scan	Zoom Scan
Grid Extents [mm]	40.0 x 80.0	25.0 x 25.0 x 25.0
Grid Steps [mm]	10.0 x 10.0	4.0 x 4.0 x 1.4
Sensor Surface [mm]	3.0	1.4
Graded Grid	N/A	Yes
M2/M1 [%]		67.3
Dist 3dB Peak [mm]		8.2

## Measurement Results

	Area Scan	Zoom Scan
psSAR1g [W/Kg]	6.04	<b>6.30</b>
psSAR10g [W/Kg]	1.94	<b>2.02</b>
Power Drift [dB]	N/A	0.01



# System Performance Check Report for D3500V2 - SN1060

## Exposure Conditions

Frequency [MHz]   Channel Number	3500.000   0	TSL Permittivity	39.0
Group   UID	CW   0--	TSL Conductivity [S/m]	2.85
Conversion Factor	7.04	Phantom Section   TSL	Flat   HSL

## Hardware Setup

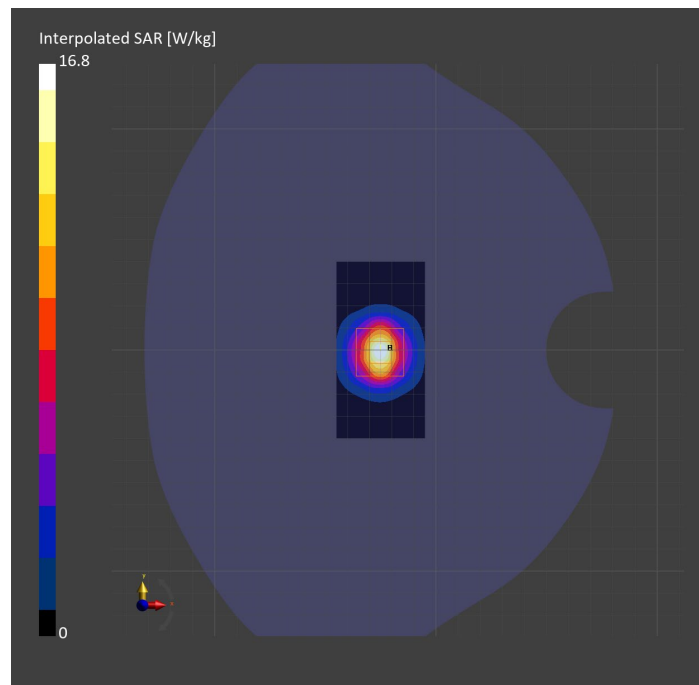
Probe   Calibration Date	EX3DV4 - SN7356   2023-03-17	Phantom	Twin-SAM V8.0 (30deg probe tilt)
DAE   Calibration Date	DAE4 Sn1798   2023-05-02	TSL Type	HBBL-600-10000
Software Version	16.2.4.2524		

## Scans Setup

	Area Scan	Zoom Scan
Grid Extents [mm]	40.0 x 80.0	28.0 x 28.0 x 28.0
Grid Steps [mm]	10.0 x 10.0	5.0 x 5.0 x 1.4
Sensor Surface [mm]	3.0	1.4
Graded Grid	N/A	Yes
M2/M1 [%]		76.3
Dist 3dB Peak [mm]		9.0

## Measurement Results

	Area Scan	Zoom Scan
psSAR1g [W/Kg]	6.52	<b>6.69</b>
psSAR10g [W/Kg]	2.52	<b>2.61</b>
Power Drift [dB]	N/A	-0.01



# System Performance Check Report for D2300V2 - SN1058

## Exposure Conditions

Frequency [MHz]   Channel Number	2300.000   0	TSL Permittivity	37.5
Group   UID	CW   0--	TSL Conductivity [S/m]	1.70
Conversion Factor	8.2	Phantom Section   TSL	Flat   HSL

## Hardware Setup

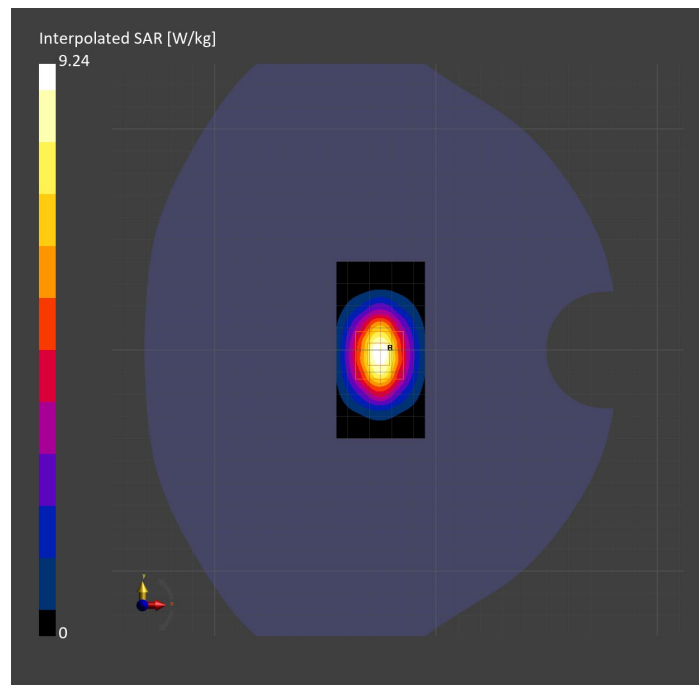
Probe   Calibration Date	EX3DV4 - SN7356   2023-03-17	Phantom	Twin-SAM V8.0 (30deg probe tilt)
DAE   Calibration Date	DAE4 Sn1798   2023-05-02	TSL Type	HBBL-600-10000
Software Version	16.2.4.2524		

## Scans Setup

	Area Scan	Zoom Scan
Grid Extents [mm]	40.0 x 80.0	30.0 x 30.0 x 30.0
Grid Steps [mm]	10.0 x 10.0	5.0 x 5.0 x 1.5
Sensor Surface [mm]	3.0	1.4
Graded Grid	N/A	Yes
M2/M1 [%]		80.9
Dist 3dB Peak [mm]		9.0

## Measurement Results

	Area Scan	Zoom Scan
psSAR1g [W/Kg]	4.67	<b>4.63</b>
psSAR10g [W/Kg]	2.24	<b>2.22</b>
Power Drift [dB]	N/A	0.01



# System Performance Check Report for CLA-13 - SN1008

## Exposure Conditions

Frequency [MHz]   Channel Number	13.000   0	TSL Permittivity	57.5
Group   UID	CW   0--	TSL Conductivity [S/m]	0.727
Conversion Factor	19.03	Phantom Section   TSL	Flat   HSL

## Hardware Setup

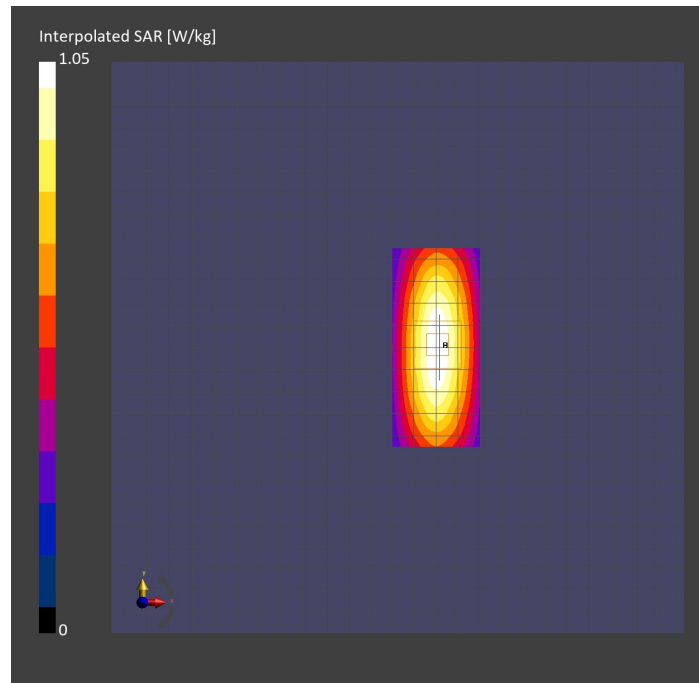
Probe   Calibration Date	EX3DV4 - SN3989   2023-01-26	Phantom	ELI V8.0 (20deg probe tilt)
DAE   Calibration Date	DAE4 Sn1257   2022-09-20	TSL Type	HBBL4-250V3
Software Version	16.2.4.2524		

## Scans Setup

	Area Scan	Zoom Scan
Grid Extents [mm]	40.0 x 90.0	30.0 x 30.0 x 30.0
Grid Steps [mm]	10.0 x 15.0	6.0 x 6.0 x 1.5
Sensor Surface [mm]	3.0	1.4
Graded Grid	N/A	Yes
M2/M1 [%]		75.4
Dist 3dB Peak [mm]		15.2

## Measurement Results

	Area Scan	Zoom Scan
psSAR1g [W/Kg]	0.546	<b>0.522</b>
psSAR10g [W/Kg]	0.439	<b>0.321</b>
Power Drift [dB]	N/A	-0.03



# System Performance Check Report for D3500V2 - SN1011

## Exposure Conditions

Frequency [MHz]   Channel Number	3500.000   0	TSL Permittivity	39.6
Group   UID	CW   0--	TSL Conductivity [S/m]	2.79
Conversion Factor	6.78	Phantom Section   TSL	Flat   HSL

## Hardware Setup

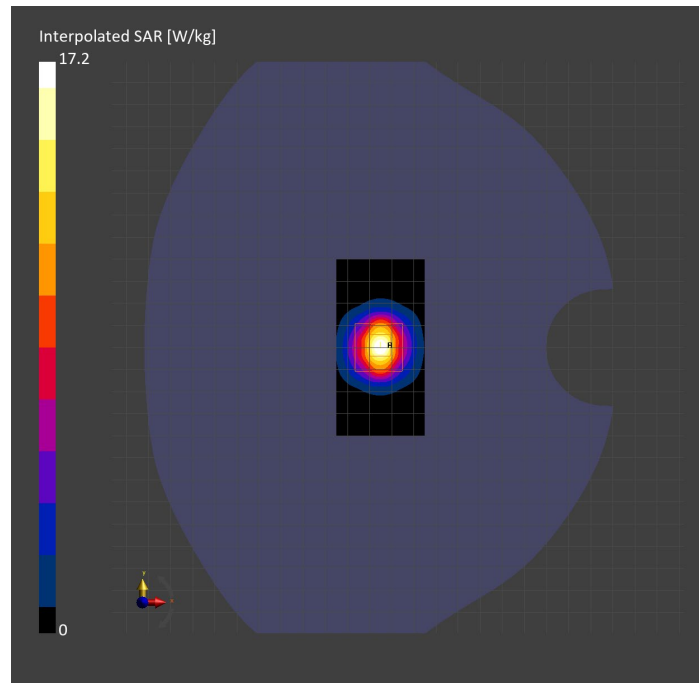
Probe   Calibration Date	EX3DV4 - SN3989   2023-01-26	Phantom	Twin-SAM V8.0 (30deg probe tilt)
DAE   Calibration Date	DAE4 Sn1547   2023-04-18	TSL Type	HBBL-600-10000
Software Version	16.2.4.2524		

## Scans Setup

	Area Scan	Zoom Scan
Grid Extents [mm]	40.0 x 80.0	28.0 x 28.0 x 28.0
Grid Steps [mm]	10.0 x 10.0	5.0 x 5.0 x 1.4
Sensor Surface [mm]	3.0	1.4
Graded Grid	N/A	Yes
M2/M1 [%]		75.8
Dist 3dB Peak [mm]		8.3

## Measurement Results

	Area Scan	Zoom Scan
psSAR1g [W/Kg]	6.61	6.79
psSAR10g [W/Kg]	2.53	2.66
Power Drift [dB]	N/A	-0.06



# System Performance Check Report for D1640V2 - SN324

## Exposure Conditions

Frequency [MHz]   Channel Number	1640.000   0	TSL Permittivity	40.9
Group   UID	CW   0--	TSL Conductivity [S/m]	1.24
Conversion Factor	8.86	Phantom Section   TSL	Flat   HSL

## Hardware Setup

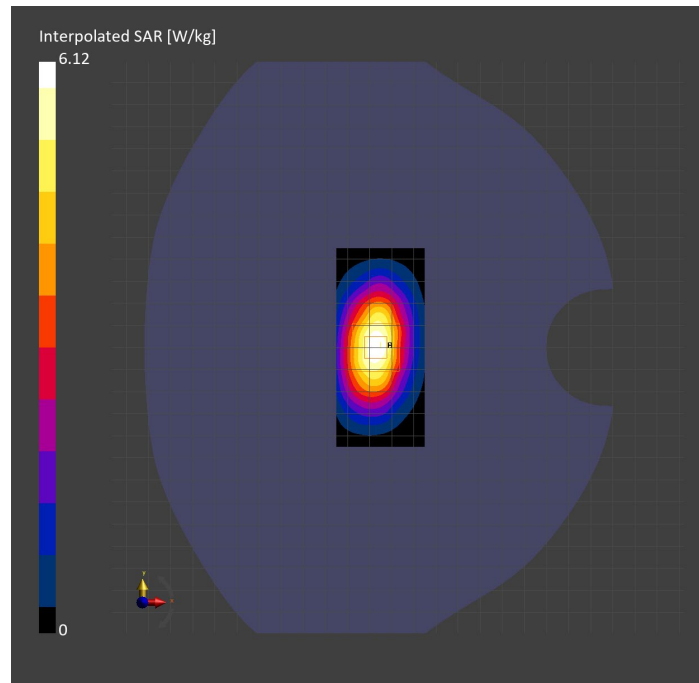
Probe   Calibration Date	EX3DV4 - SN3989   2023-01-26	Phantom	Twin-SAM V8.0 (30deg probe tilt)
DAE   Calibration Date	DAE4 Sn1547   2023-04-18	TSL Type	HBBL-600-10000
Software Version	16.2.4.2524		

## Scans Setup

	Area Scan	Zoom Scan
Grid Extents [mm]	40.0 x 90.0	30.0 x 30.0 x 30.0
Grid Steps [mm]	10.0 x 15.0	6.0 x 6.0 x 1.5
Sensor Surface [mm]	3.0	1.4
Graded Grid	N/A	Yes
M2/M1 [%]		84.8
Dist 3dB Peak [mm]		10.8

## Measurement Results

	Area Scan	Zoom Scan
psSAR1g [W/Kg]	3.42	<b>3.56</b>
psSAR10g [W/Kg]	1.91	<b>1.97</b>
Power Drift [dB]	N/A	-0.03



# System Performance Check Report for D750V3 - SN1019

## Exposure Conditions

Frequency [MHz]   Channel Number	750.000   0	TSL Permittivity	43.6
Group   UID	CW   0--	TSL Conductivity [S/m]	0.878
Conversion Factor	8.6	Phantom Section   TSL	Flat   HSL

## Hardware Setup

Probe   Calibration Date	EX3DV4 - SN3749   2023-01-27	Phantom	Twin-SAM V8.0 (30deg probe tilt)
DAE   Calibration Date	DAE4 Sn1784   2023-04-03	TSL Type	HBBL-600-10000
Software Version	16.2.4.2524		

## Scans Setup

	Area Scan	Zoom Scan
Grid Extents [mm]	40.0 x 90.0	30.0 x 30.0 x 30.0
Grid Steps [mm]	10.0 x 15.0	6.0 x 6.0 x 1.5
Sensor Surface [mm]	3.0	1.4
Graded Grid	N/A	Yes
M2/M1 [%]		89.2
Dist 3dB Peak [mm]		> 15.0

## Measurement Results

	Area Scan	Zoom Scan
psSAR1g [W/Kg]	0.818	<b>0.831</b>
psSAR10g [W/Kg]	0.547	<b>0.558</b>
Power Drift [dB]	N/A	0.12

