

Measurement Report for Custom Band: CW, FRONT

Exposure Conditions

Band	Custom Band	Phantom Section	5G
Frequency [MHz] Channel Number	10000.0 10000000	Conversion Factor	1.0
Group UID	CW, 0--	Position Test Distance [mm]	FRONT 10.00

Hardware Setup

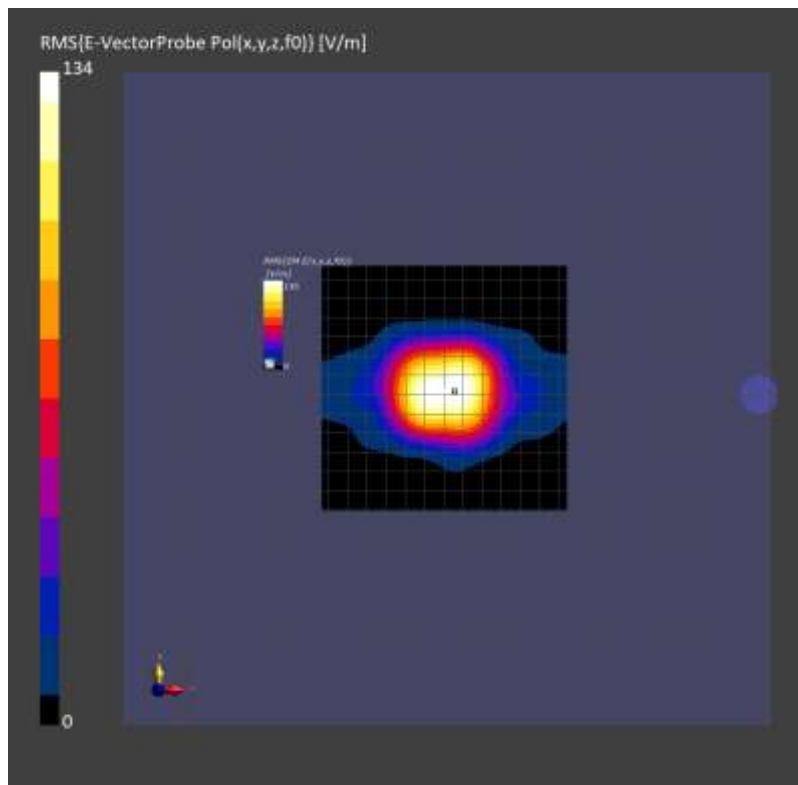
Probe Calibration Date	EUmmWV4 - SN9589_F1-55GHz 2022-09-20	Phantom	mmWave xxxx
DAE Calibration Date	DAE4 Sn1377 2022-09-15	Medium	Air -
Software Version	3.2.2.2358		

Scan Setup

Scan Type	5G Scan	Grid Extents [mm]	120.0 x 120.0
Grid Steps [lambda]	0.25 x 0.25	Sensor Surface [mm]	10.0

Measurement Results

Avg. Area [cm ²]	4.00
psPDn+ [W/m ²]	42.8
psPDtot+ [W/m ²]	43.0
psPDmod+ [W/m ²]	43.1
E _{max} [V/m]	135
Power Drift [dB]	0.03



Measurement Report for Custom Band: CW, FRONT

Exposure Conditions

Band	Custom Band	Phantom Section	5G
Frequency [MHz] Channel Number	10000.0 10000000	Conversion Factor	1.0
Group UID	CW, 0--	Position Test Distance [mm]	FRONT 10.00

Hardware Setup

Probe Calibration Date	EUmmWV4 - SN9496_F1-55GHz 2023-02-20	Phantom	mmWave xxxx
DAE Calibration Date	DAE4 Sn1540 2023-01-23	Medium	Air -
Software Version	3.2.2.2358		

Scan Setup

Scan Type	5G Scan	Grid Extents [mm]	120.0 x 120.0
Grid Steps [lambda]	0.25 x 0.25	Sensor Surface [mm]	10.0

Measurement Results

Avg. Area [cm ²]	4.00
psPDn+ [W/m ²]	44.8
psPDtot+ [W/m ²]	45.0
psPDmod+ [W/m ²]	45.2
E _{max} [V/m]	139
Power Drift [dB]	-0.02

