

Measurement Report for PCS 1900: GPRS-FDD (TDMA, GMSK, TN 0-1), CHEEK

Exposure Conditions

Band	PCS 1900	TSL Permittivity	39.7
Frequency [MHz] Channel Number	1850.200 512	TSL Conductivity [S/m]	1.42
Group UID	GSM 10024-DAC	Phantom Section TSL	LeftHead HSL
Conversion Factor	7.53	Test Distance [mm]	0.00

Hardware Setup

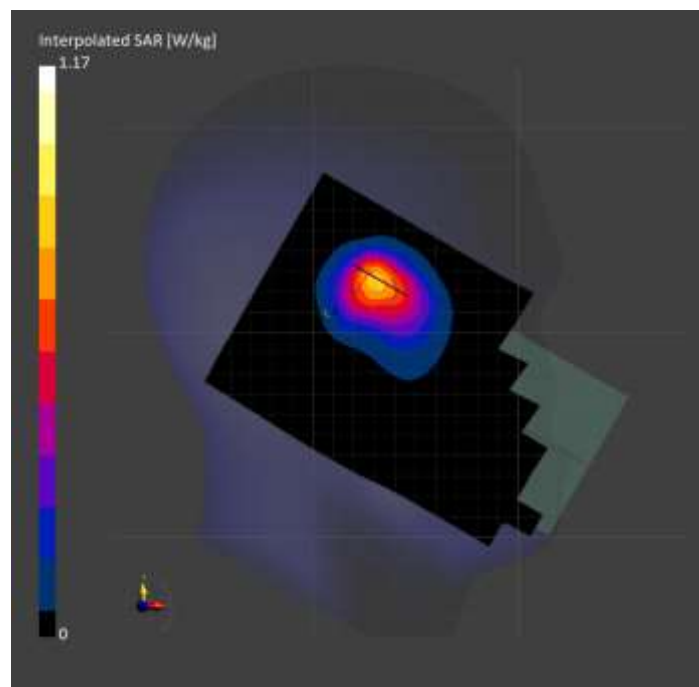
Probe Calibration Date	EX3DV4 - SN7807 2023-04-11	Phantom	Twin-SAM V8.0 (30deg probe tilt)
DAE Calibration Date	DAE4 Sn1799 2023-04-04	TSL Type	HBBL-600-10000
Software Version	16.2.4.2524		

Scan Setup

	Area Scan	Zoom Scan
Grid Extents [mm]	120.0 x 210.0	30.0 x 30.0 x 30.0
Grid Steps [mm]	15.0 x 15.0	6.0 x 6.0 x 1.5
Sensor Surface [mm]	3.0	1.4
Graded Grid	N/A	Yes
M2/M1 [%]		86.5
Dist 3dB Peak [mm]		9.5

Measurement Results

	Area Scan	Zoom Scan
psSAR1g [W/Kg]	0.663	0.648
psSAR10g [W/Kg]	0.370	0.369
Power Drift [dB]	N/A	0.03



Measurement Report for Band 2: UMTS-FDD (WCDMA), CHEEK

Exposure Conditions

Band	Band 2	TSL Permittivity	39.7
Frequency [MHz] Channel Number	1852.400 9262	TSL Conductivity [S/m]	1.42
Group UID	WCDMA 10011-CAC	Phantom Section TSL	LeftHead HSL
Conversion Factor	7.53	Test Distance [mm]	0.00

Hardware Setup

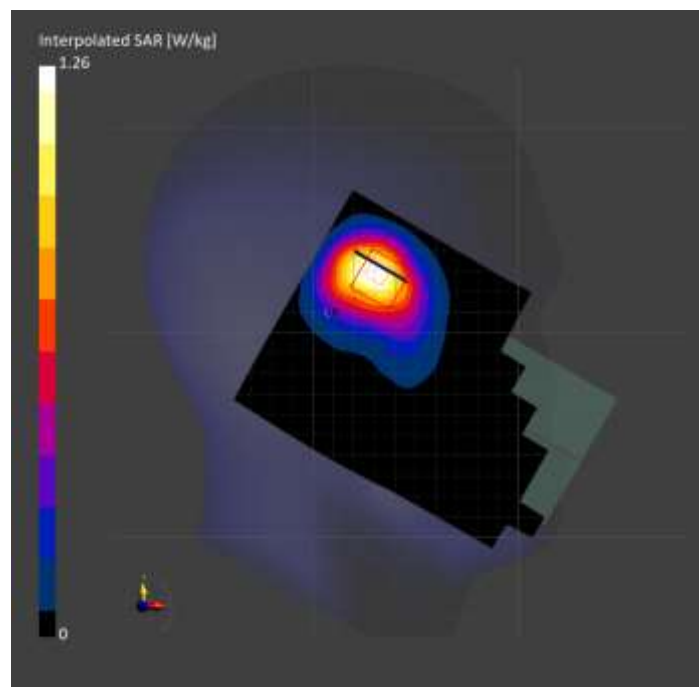
Probe Calibration Date	EX3DV4 - SN7807 2023-04-11	Phantom	Twin-SAM V8.0 (30deg probe tilt)
DAE Calibration Date	DAE4 Sn1799 2023-04-04	TSL Type	HBBL-600-10000
Software Version	16.2.4.2524		

Scan Setup

	Area Scan	Zoom Scan
Grid Extents [mm]	120.0 x 180.0	30.0 x 30.0 x 30.0
Grid Steps [mm]	15.0 x 15.0	6.0 x 6.0 x 1.5
Sensor Surface [mm]	3.0	1.4
Graded Grid	N/A	Yes
M2/M1 [%]		83.5
Dist 3dB Peak [mm]		9.7

Measurement Results

	Area Scan	Zoom Scan
psSAR1g [W/Kg]	0.705	0.728
psSAR10g [W/Kg]	0.398	0.410
Power Drift [dB]	N/A	-0.00



Measurement Report for Band 25: LTE-FDD (SC-FDMA, 1 RB, 20 MHz, QPSK) RBPosition:Mid AntennaCfg:SISO, CHEEK

Exposure Conditions

Band	Band 25	TSL Permittivity	38.4
Frequency [MHz] Channel Number	1905.000 26590	TSL Conductivity [S/m]	1.45
Group UID	LTE-FDD 10169-CAF	Phantom Section TSL	RightHead HSL
Conversion Factor	7.53	Test Distance [mm]	0.00

Hardware Setup

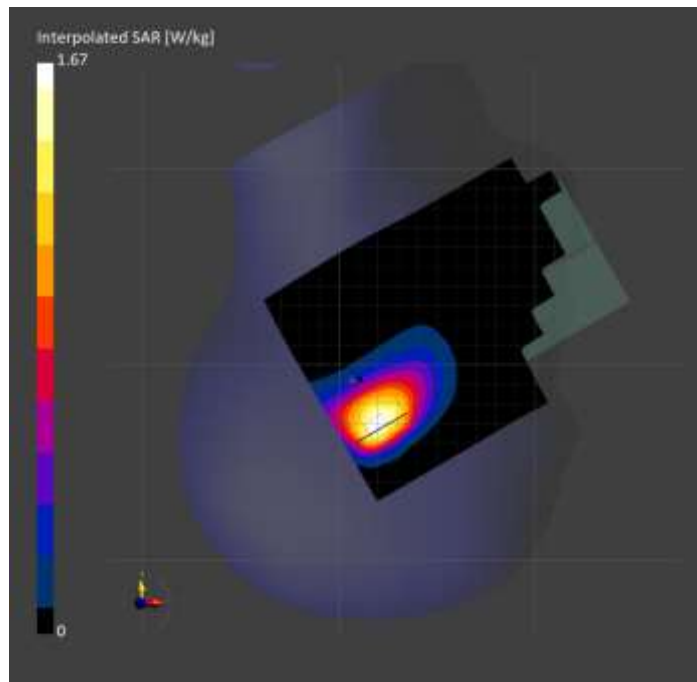
Probe Calibration Date	EX3DV4 - SN7807 2023-04-11	Phantom	Twin-SAM V8.0 (30deg probe tilt)
DAE Calibration Date	DAE4 Sn1799 2023-04-04	TSL Type	HBBL-600-10000
Software Version	16.2.4.2524		

Scan Setup

	Area Scan	Zoom Scan
Grid Extents [mm]	120.0 x 180.0	30.0 x 30.0 x 30.0
Grid Steps [mm]	15.0 x 15.0	6.0 x 6.0 x 1.5
Sensor Surface [mm]	3.0	1.4
Graded Grid	N/A	Yes
M2/M1 [%]		72.5
Dist 3dB Peak [mm]		7.8

Measurement Results

	Area Scan	Zoom Scan
psSAR1g [W/Kg]	0.732	0.722
psSAR10g [W/Kg]	0.407	0.392
Power Drift [dB]	N/A	0.00



Measurement Report for Band n30: 5G NR (DFT-s-OFDM, 1 RB, 10 MHz, QPSK, 15 kHz) RBPosition:Mid AntennaCfg:SISO, CHEEK

Exposure Conditions

Band	Band n30	TSL Permittivity	38.3
Frequency [MHz] Channel Number	2310.000 462000	TSL Conductivity [S/m]	1.60
Group UID	5G NR FR1 FDD 10929-AAD	Phantom Section TSL	LeftHead HSL
Conversion Factor	7.71	Test Distance [mm]	0.00

Hardware Setup

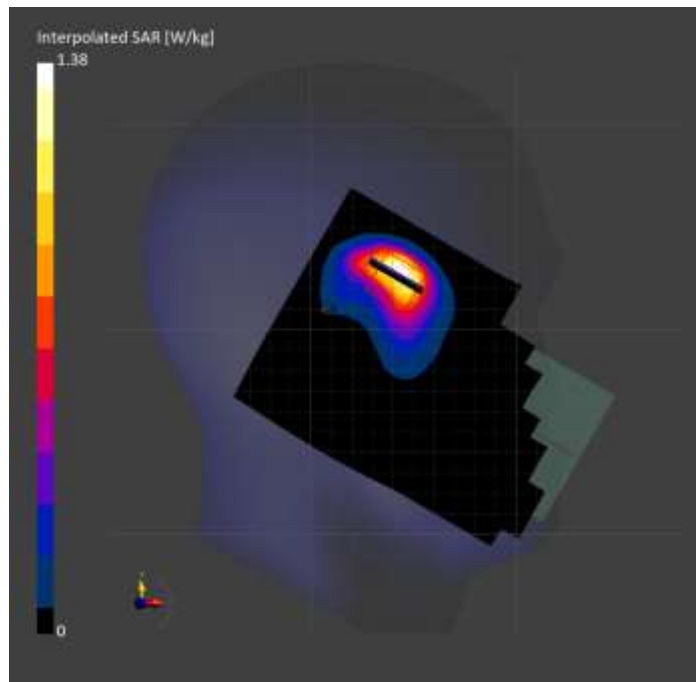
Probe Calibration Date	EX3DV4 - SN7482 2023-04-18	Phantom	Twin-SAM V8.0 (30deg probe tilt)
DAE Calibration Date	DAE4 Sn1380 2023-02-14	TSL Type	HBBL-600-10000
Software Version	16.2.4.2524		

Scan Setup

	Area Scan	Zoom Scan
Grid Extents [mm]	120.0 x 180.0	30.0 x 30.0 x 30.0
Grid Steps [mm]	10.0 x 10.0	5.0 x 5.0 x 1.5
Sensor Surface [mm]	3.0	1.4
Graded Grid	N/A	Yes
M2/M1 [%]		74.8
Dist 3dB Peak [mm]		7.0

Measurement Results

	Area Scan	Zoom Scan
psSAR1g [W/Kg]	0.496	0.559
psSAR10g [W/Kg]	0.248	0.255
Power Drift [dB]	N/A	-0.05



Measurement Report for WLAN 2.4GHz: IEEE 802.11b WiFi 2.4 GHz (DSSS, 1 Mbps), CHEEK

Exposure Conditions

Band	WLAN 2.4GHz	TSL Permittivity	40.2
Frequency [MHz] Channel Number	2437.000 6	TSL Conductivity [S/m]	1.66
Group UID	WLAN 10012-CAB	Phantom Section TSL	LeftHead HSL
Conversion Factor	7.64	Test Distance [mm]	0.00

Hardware Setup

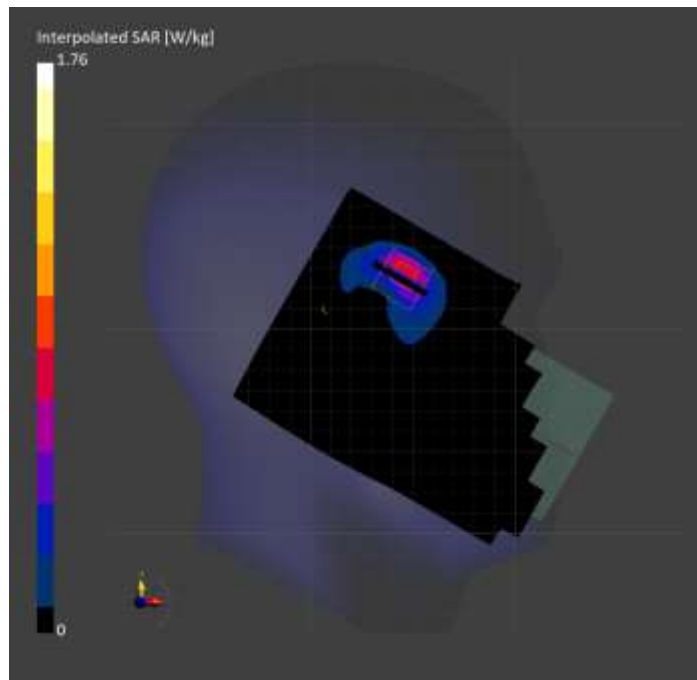
Probe Calibration Date	EX3DV4 - SN7587 2023-04-18	Phantom	Twin-SAM V8.0 (30deg probe tilt)
DAE Calibration Date	DAE4 Sn1239 2023-03-16	TSL Type	HBBL-600-10000
Software Version	16.2.4.2524		

Scan Setup

	Area Scan	Zoom Scan
Grid Extents [mm]	120.0 x 180.0	30.0 x 30.0 x 30.0
Grid Steps [mm]	10.0 x 10.0	5.0 x 5.0 x 1.5
Sensor Surface [mm]	3.0	1.4
Graded Grid	N/A	Yes
M2/M1 [%]		77.0
Dist 3dB Peak [mm]		5.9

Measurement Results

	Area Scan	Zoom Scan
psSAR1g [W/Kg]	0.636	0.716
psSAR10g [W/Kg]	0.288	0.301
Power Drift [dB]	N/A	0.06



Measurement Report for U-NII-2C < 5.65 GHz: IEEE 802.11ac WiFi (80MHz, MCS0, 99pc duty cycle), CHEEK

Exposure Conditions

Band	U-NII-2C < 5.65 GHz	TSL Permittivity	35.1
Frequency [MHz] Channel Number	5610.000 122	TSL Conductivity [S/m]	4.88
Group UID	WLAN 10544-AAD	Phantom Section TSL	RightHead HSL
Conversion Factor	4.65	Test Distance [mm]	0.00

Hardware Setup

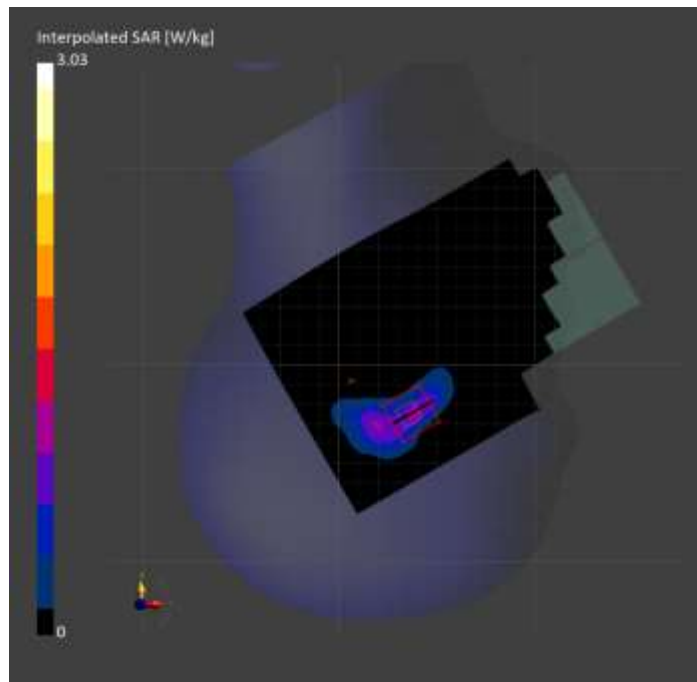
Probe Calibration Date	EX3DV4 - SN3991 2022-09-22	Phantom	Twin-SAM V8.0 (30deg probe tilt)
DAE Calibration Date	DAE4 Sn1674 2023-05-11	TSL Type	HBBL-600-10000
Software Version	16.2.4.2524		

Scan Setup

	Area Scan	Zoom Scan
Grid Extents [mm]	120.0 x 200.0	24.0 x 24.0 x 22.0
Grid Steps [mm]	10.0 x 10.0	4.0 x 4.0 x 1.4
Sensor Surface [mm]	3.0	1.4
Graded Grid	N/A	Yes
M2/M1 [%]		66.6
Dist 3dB Peak [mm]		6.6

Measurement Results

	Area Scan	Zoom Scan
psSAR1g [W/Kg]	0.754	0.881
psSAR10g [W/Kg]	0.296	0.301
Power Drift [dB]	N/A	0.02



Measurement Report for n260: CW, EDGE RIGHT

Exposure Conditions

Band	n260	Phantom Section	5G
Frequency [MHz] Channel Number	38500.0 2253330	Conversion Factor	1.0
Group UID	CW, 0--	Position Test Distance [mm]	EDGE RIGHT 2.00

Hardware Setup

Probe Calibration Date	EUmmWV4 - SN9589_F1-55GHz 2022-09-20	Phantom	mmWave xxxx
DAE Calibration Date	DAE4 Sn1377 2022-09-15	Medium	Air -
Software Version	3.2.2.2358		

Scan Setup

Scan Type	5G Scan	Grid Extents [mm]	25.0 x 25.0
Grid Steps [lambda]	0.25 x 0.25	Sensor Surface [mm]	2.0

Measurement Results

Avg. Area [cm ²]	4.00
psPDn+ [W/m ²]	3.64
psPDtot+ [W/m ²]	5.69
psPDmod+ [W/m ²]	6.54
E _{max} [V/m]	105
Power Drift [dB]	0.22

