

# System Performance Check Report for D2450V2 - SN706

## Exposure Conditions

Frequency [MHz]   Channel Number	2450.000   0	TSL Permittivity	40.2
Group   UID	CW   0--	TSL Conductivity [S/m]	1.67
Conversion Factor	7.64	Phantom Section   TSL	Flat   HSL

## Hardware Setup

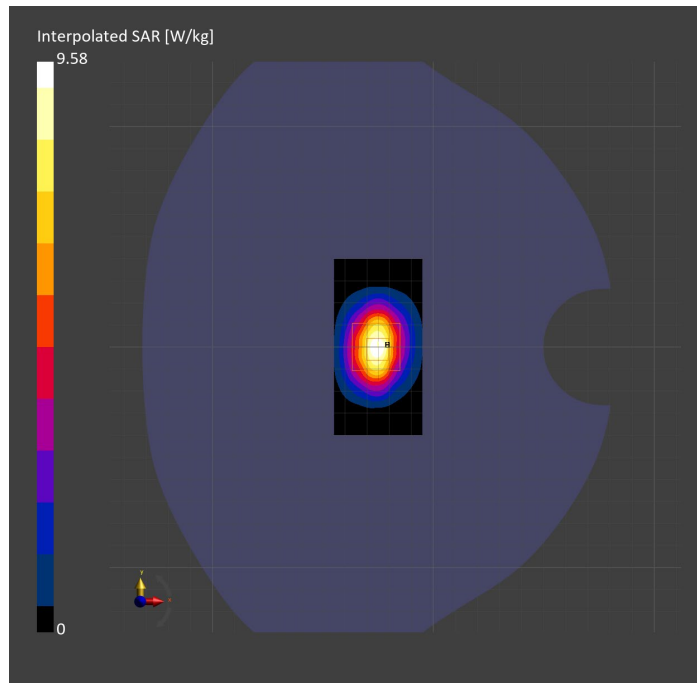
Probe   Calibration Date	EX3DV4 - SN7587   2023-04-18	Phantom	Twin-SAM V8.0 (30deg probe tilt)
DAE   Calibration Date	DAE4 Sn1239   2023-03-16	TSL Type	HBBL-600-10000
Software Version	16.2.4.2524		

## Scans Setup

	Area Scan	Zoom Scan
Grid Extents [mm]	40.0 x 80.0	30.0 x 30.0 x 30.0
Grid Steps [mm]	10.0 x 10.0	5.0 x 5.0 x 1.5
Sensor Surface [mm]	3.0	1.4
Graded Grid	N/A	Yes
M2/M1 [%]		81.8
Dist 3dB Peak [mm]		9.0

## Measurement Results

	Area Scan	Zoom Scan
psSAR1g [W/Kg]	4.96	<b>4.95</b>
psSAR10g [W/Kg]	2.29	<b>2.38</b>
Power Drift [dB]	N/A	-0.03



# System Performance Check Report for D5GHzV2 - SN1138

## Exposure Conditions

Frequency [MHz]   Channel Number	5600.000   0	TSL Permittivity	35.1
Group   UID	CW   0--	TSL Conductivity [S/m]	4.87
Conversion Factor	4.65	Phantom Section   TSL	Flat   HSL

## Hardware Setup

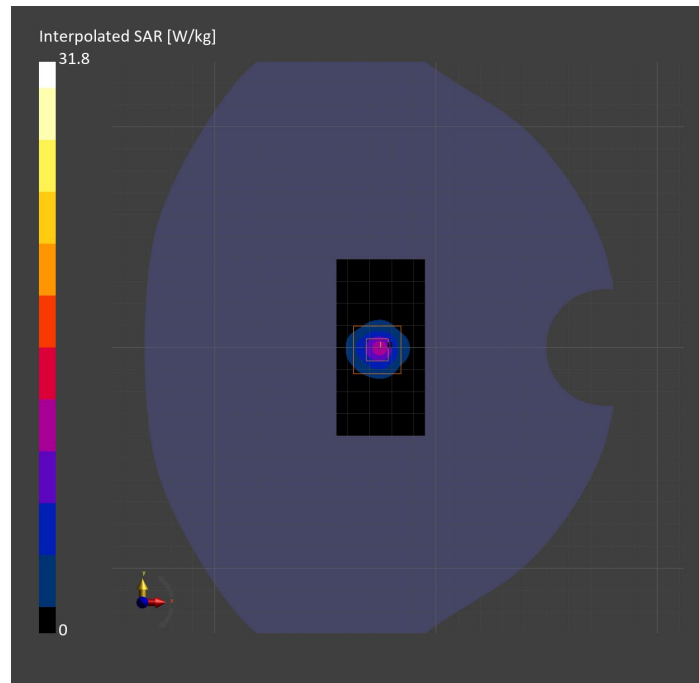
Probe   Calibration Date	EX3DV4 - SN3991   2022-09-22	Phantom	Twin-SAM V8.0 (30deg probe tilt)
DAE   Calibration Date	DAE4 Sn1674   2023-05-11	TSL Type	HBBL-600-10000
Software Version	16.2.4.2524		

## Scans Setup

	Area Scan	Zoom Scan
Grid Extents [mm]	40.0 x 80.0	22.0 x 22.0 x 22.0
Grid Steps [mm]	10.0 x 10.0	4.0 x 4.0 x 1.4
Sensor Surface [mm]	3.0	1.4
Graded Grid	N/A	Yes
M2/M1 [%]		64.5
Dist 3dB Peak [mm]		7.6

## Measurement Results

	Area Scan	Zoom Scan
psSAR1g [W/Kg]	7.91	8.39
psSAR10g [W/Kg]	2.33	2.51
Power Drift [dB]	N/A	0.03



# System Performance Check Report for D1900V2 - SN5d163

## Exposure Conditions

Frequency [MHz]   Channel Number	1900.000   0	TSL Permittivity	38.5
Group   UID	CW   0--	TSL Conductivity [S/m]	1.45
Conversion Factor	7.53	Phantom Section   TSL	Flat   HSL

## Hardware Setup

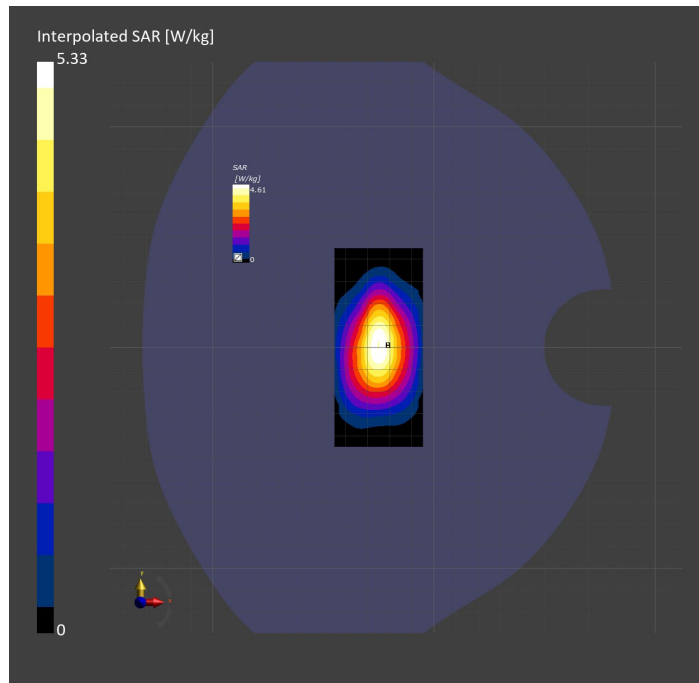
Probe   Calibration Date	EX3DV4 - SN7807   2023-04-11	Phantom	Twin-SAM V8.0 (30deg probe tilt)
DAE   Calibration Date	DAE4 Sn1799   2023-04-04	TSL Type	HBBL-600-10000
Software Version	16.2.4.2524		

## Scans Setup

	Area Scan	Zoom Scan
Grid Extents [mm]	40.0 x 90.0	30.0 x 30.0 x 30.0
Grid Steps [mm]	10.0 x 15.0	6.0 x 6.0 x 1.5
Sensor Surface [mm]	3.0	1.4
Graded Grid	N/A	Yes
M2/M1 [%]		82.0
Dist 3dB Peak [mm]		10.3

## Measurement Results

	Area Scan	Zoom Scan
psSAR1g [W/Kg]	4.22	<b>4.21</b>
psSAR10g [W/Kg]	2.20	<b>2.20</b>
Power Drift [dB]	N/A	-0.00



# System Performance Check Report for D2300V2 - SN1058

## Exposure Conditions

Frequency [MHz]   Channel Number	2300.000   0	TSL Permittivity	38.3
Group   UID	CW   0--	TSL Conductivity [S/m]	1.59
Conversion Factor	7.71	Phantom Section   TSL	Flat   HSL

## Hardware Setup

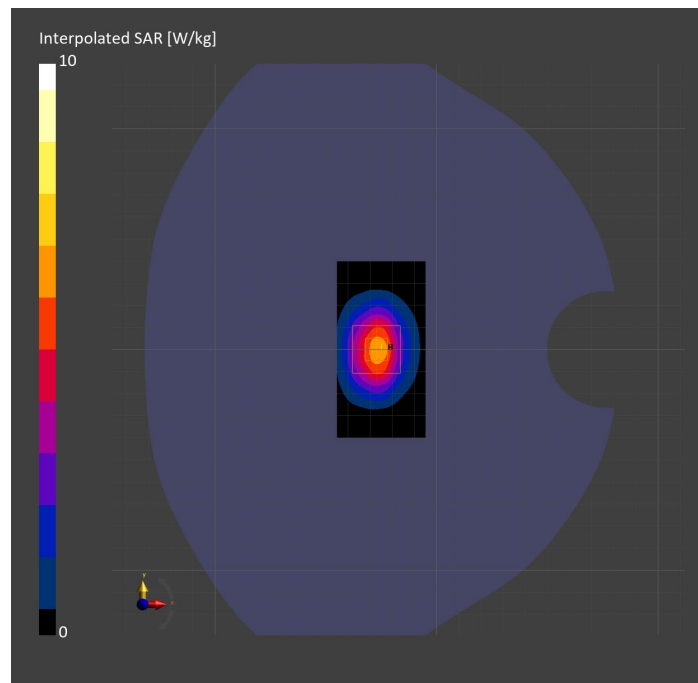
Probe   Calibration Date	EX3DV4 - SN7482   2023-04-18	Phantom	Twin-SAM V8.0 (30deg probe tilt)
DAE   Calibration Date	DAE4 Sn1380   2023-02-14	TSL Type	HBBL-600-10000
Software Version	16.2.4.2524		

## Scans Setup

	Area Scan	Zoom Scan
Grid Extents [mm]	40.0 x 80.0	30.0 x 30.0 x 30.0
Grid Steps [mm]	10.0 x 10.0	5.0 x 5.0 x 1.5
Sensor Surface [mm]	3.0	1.4
Graded Grid	N/A	Yes
M2/M1 [%]		79.9
Dist 3dB Peak [mm]		9.3

## Measurement Results

	Area Scan	Zoom Scan
psSAR1g [W/Kg]	5.12	<b>4.99</b>
psSAR10g [W/Kg]	2.48	<b>2.44</b>
Power Drift [dB]	N/A	-0.12



# Measurement Report for Device, FRONT, Validation band, UID 0 -, Channel 0 (30000.0MHz)

## Device under Test Properties

Model, Manufacturer	Dimensions [mm]	IMEI	DUT Type
, Device	100.0 x 100.0 x 100.0		Phone

## Exposure Conditions

Phantom Section	Position, Test Distance [mm]	Band	Group, UID	Frequency [MHz], Channel Number	Conversion Factor
5G Air	FRONT, 5.55	Validation band	CW, 0--	30000.0, 0	1.0

## Hardware Setup

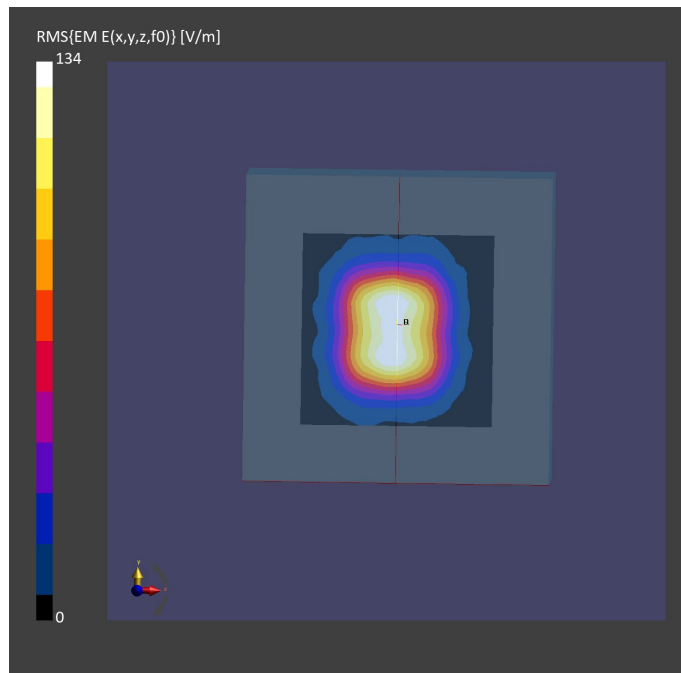
Phantom	Medium	Probe, Calibration Date	DAE, Calibration Date
mmWave- xxxx	---Air	EUmmWV4 - SN9589_F1-55GHz, 2022-09-20	DAE4 Sn1377, 2022-09-15

## Scan Setup

	5G Scan
Grid Extents [mm]	60.0 x 60.0
Grid Steps [lambda]	0.25 x 0.25
Sensor Surface [mm]	5.55
MAIA	N/A

## Measurement Results

	5G Scan
Date	2023-03-16, 19:11
Avg. Area [cm <sup>2</sup> ]	4.00
psPDn+ [W/m <sup>2</sup> ]	34.7
psPDtot+ [W/m <sup>2</sup> ]	36.1
psPDmod+ [W/m <sup>2</sup> ]	36.2
E <sub>max</sub> [V/m]	134
Power Drift [dB]	-0.02



# Measurement Report for Validation band: CW, FRONT

## Exposure Conditions

Band	Validation band	Phantom Section	5G
Frequency [MHz]   Channel Number	30000.0   0	Conversion Factor	1.0
Group   UID	CW, 0--	Position   Test Distance [mm]	FRONT   5.55

## Hardware Setup

Probe   Calibration Date	EUmmWV4 - SN9589_F1-55GHz   2022-09-20	Phantom	mmWave   xxxx
DAE   Calibration Date	DAE4 Sn1377   2022-09-15	Medium	Air   -
Software Version	3.2.2.2358		

## Scan Setup

Scan Type	5G Scan	Grid Extents [mm]	60.0 x 60.0
Grid Steps [ $\lambda$ ]	0.25 x 0.25	Sensor Surface [mm]	5.55

## Measurement Results

Avg. Area [ $\text{cm}^2$ ]	4.00
psPDn+ [ $\text{W}/\text{m}^2$ ]	35.2
psPDtot+ [ $\text{W}/\text{m}^2$ ]	36.6
psPDmod+ [ $\text{W}/\text{m}^2$ ]	39.3
$E_{\text{max}}$ [V/m]	143
Power Drift [dB]	-0.01

