

Measurement Report for GSM 850: GPRS-FDD (TDMA, GMSK, TN 0-1), BACK

Exposure Conditions

Band	GSM 850	TSL Permittivity	43.4
Frequency [MHz] Channel Number	836.600 190	TSL Conductivity [S/m]	0.871
Group UID	GSM 10024-DAC	Phantom Section TSL	Flat HSL
Conversion Factor	7.83	Test Distance [mm]	5.00

Hardware Setup

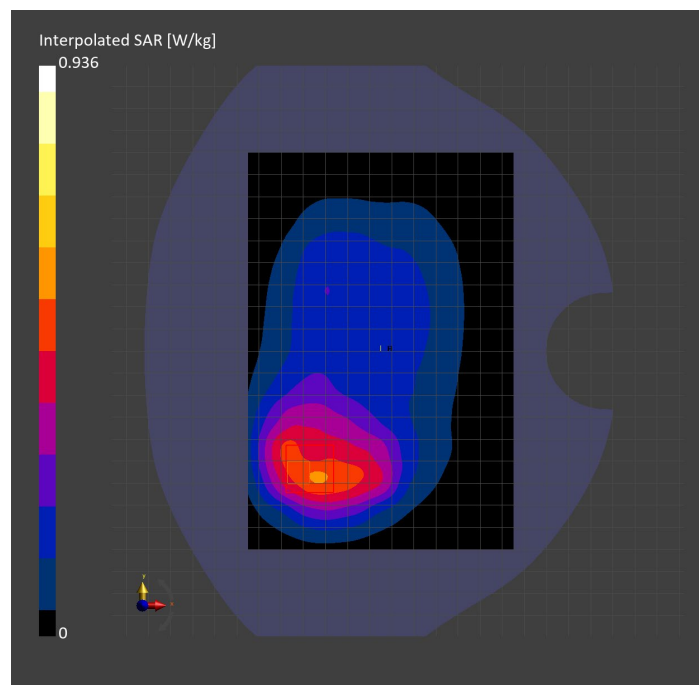
Probe Calibration Date	EX3DV4 - SN3749 2023-01-27	Phantom	Twin-SAM V8.0 (30deg probe tilt)
DAE Calibration Date	DAE4 Sn1357 2023-01-27	TSL Type	HBBL-600-10000
Software Version	16.2.4.2524		

Scan Setup

	Area Scan	Zoom Scan
Grid Extents [mm]	120.0 x 180.0	30.0 x 30.0 x 30.0
Grid Steps [mm]	15.0 x 15.0	6.0 x 6.0 x 1.5
Sensor Surface [mm]	3.0	1.4
Graded Grid	N/A	Yes
M2/M1 [%]		78.1
Dist 3dB Peak [mm]		12.4

Measurement Results

	Area Scan	Zoom Scan
psSAR1g [W/Kg]	0.475	0.472
psSAR10g [W/Kg]	0.315	0.276
Power Drift [dB]	N/A	-0.04



Measurement Report for GSM 850: GPRS-FDD (TDMA, GMSK, TN 0-1), EDGE RIGHT

Exposure Conditions

Band	GSM 850	TSL Permittivity	43.4
Frequency [MHz] Channel Number	836.600 190	TSL Conductivity [S/m]	0.871
Group UID	GSM 10024-DAC	Phantom Section TSL	Flat HSL
Conversion Factor	7.83	Test Distance [mm]	5.00

Hardware Setup

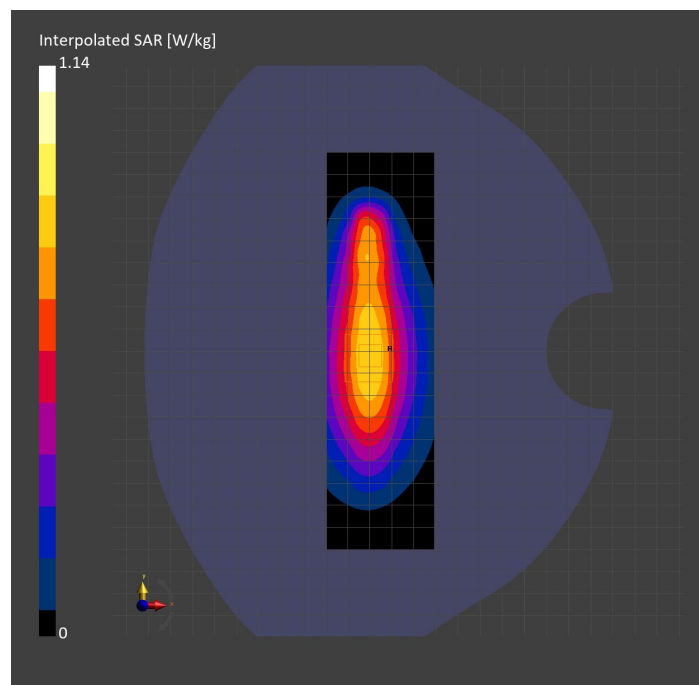
Probe Calibration Date	EX3DV4 - SN3749 2023-01-27	Phantom	Twin-SAM V8.0 (30deg probe tilt)
DAE Calibration Date	DAE4 Sn1357 2023-01-27	TSL Type	HBBL-600-10000
Software Version	16.2.4.2524		

Scan Setup

	Area Scan	Zoom Scan
Grid Extents [mm]	48.6 x 180.0	30.0 x 30.0 x 30.0
Grid Steps [mm]	8.1 x 15.0	6.0 x 6.0 x 1.5
Sensor Surface [mm]	3.0	1.4
Graded Grid	N/A	Yes
M2/M1 [%]		87.2
Dist 3dB Peak [mm]		14.4

Measurement Results

	Area Scan	Zoom Scan
psSAR1g [W/Kg]	0.739	0.733
psSAR10g [W/Kg]	0.480	0.480
Power Drift [dB]	N/A	-0.02



Measurement Report for GSM 850: GPRS-FDD (TDMA, GMSK, TN 0-1), CHEEK

Exposure Conditions

Band	GSM 850	TSL Permittivity	43.4
Frequency [MHz] Channel Number	836.600 190	TSL Conductivity [S/m]	0.871
Group UID	GSM 10024-DAC	Phantom Section TSL	RightHead HSL
Conversion Factor	7.83	Test Distance [mm]	0.00

Hardware Setup

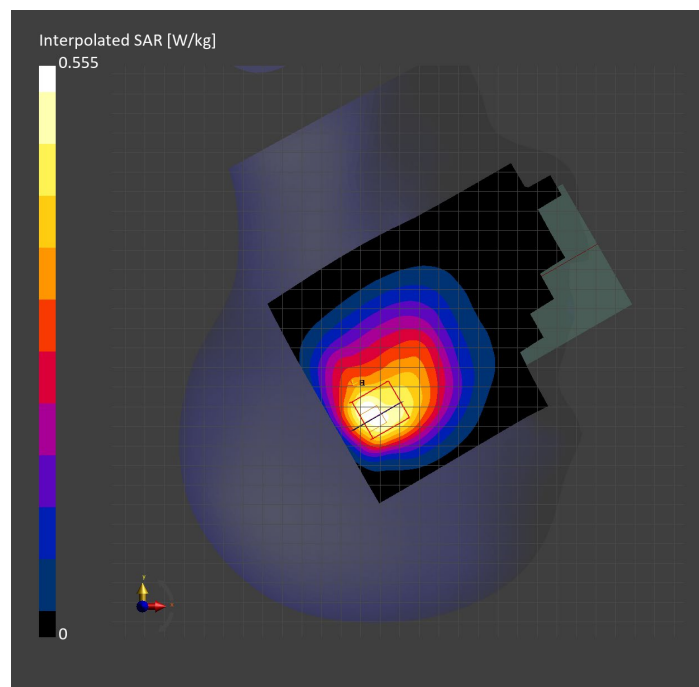
Probe Calibration Date	EX3DV4 - SN3749 2023-01-27	Phantom	Twin-SAM V8.0 (30deg probe tilt)
DAE Calibration Date	DAE4 Sn1357 2023-01-27	TSL Type	HBBL-600-10000
Software Version	16.2.4.2524		

Scan Setup

	Area Scan	Zoom Scan
Grid Extents [mm]	120.0 x 180.0	30.0 x 30.0 x 30.0
Grid Steps [mm]	15.0 x 15.0	6.0 x 6.0 x 1.5
Sensor Surface [mm]	3.0	1.4
Graded Grid	N/A	Yes
M2/M1 [%]		83.8
Dist 3dB Peak [mm]		8.6

Measurement Results

	Area Scan	Zoom Scan
psSAR1g [W/Kg]	0.323	0.304
psSAR10g [W/Kg]	0.211	0.197
Power Drift [dB]	N/A	-0.01



Measurement Report for PCS 1900: GPRS-FDD (TDMA, GMSK, TN 0-1), EDGE BOTTOM

Exposure Conditions

Band	PCS 1900	TSL Permittivity	41.7
Frequency [MHz] Channel Number	1880.000 661	TSL Conductivity [S/m]	1.40
Group UID	GSM 10024-DAC	Phantom Section TSL	Flat HSL
Conversion Factor	8.43	Test Distance [mm]	5.00

Hardware Setup

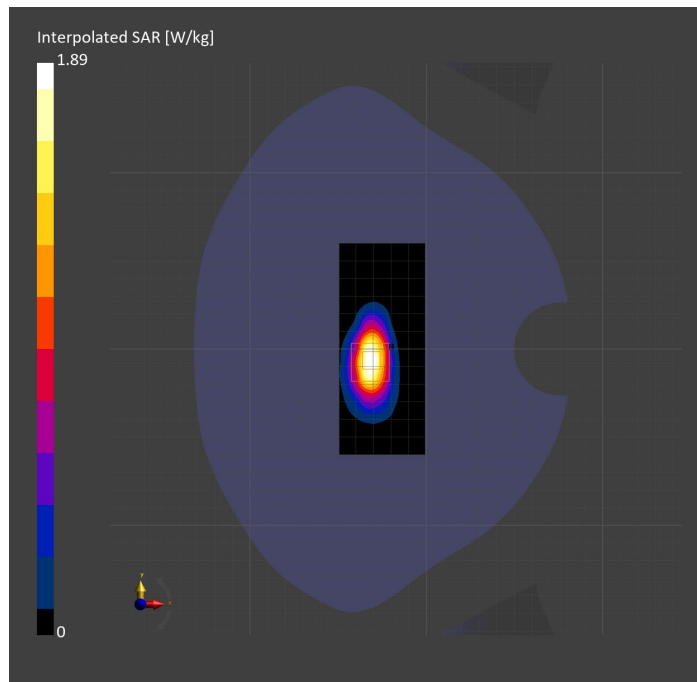
Probe Calibration Date	EX3DV4 - SN3991 2022-09-22	Phantom	Twin-SAM V8.0 (30deg probe tilt)
DAE Calibration Date	DAE4 Sn1674 2023-05-11	TSL Type	HBBL-600-10000
Software Version	16.2.4.2524		

Scan Setup

	Area Scan	Zoom Scan
Grid Extents [mm]	48.6 x 120.0	30.0 x 30.0 x 30.0
Grid Steps [mm]	8.1 x 15.0	6.0 x 6.0 x 1.5
Sensor Surface [mm]	3.0	1.4
Graded Grid	N/A	Yes
M2/M1 [%]		77.6
Dist 3dB Peak [mm]		7.2

Measurement Results

	Area Scan	Zoom Scan
psSAR1g [W/Kg]	0.859	0.881
psSAR10g [W/Kg]	0.416	0.412
Power Drift [dB]	N/A	-0.05



Measurement Report for PCS 1900: GPRS-FDD (TDMA, GMSK, TN 0-1), CHEEK

Exposure Conditions

Band	PCS 1900	TSL Permittivity	39.6
Frequency [MHz] Channel Number	1850.200 512	TSL Conductivity [S/m]	1.39
Group UID	GSM 10024-DAC	Phantom Section TSL	LeftHead HSL
Conversion Factor	7.53	Test Distance [mm]	0.00

Hardware Setup

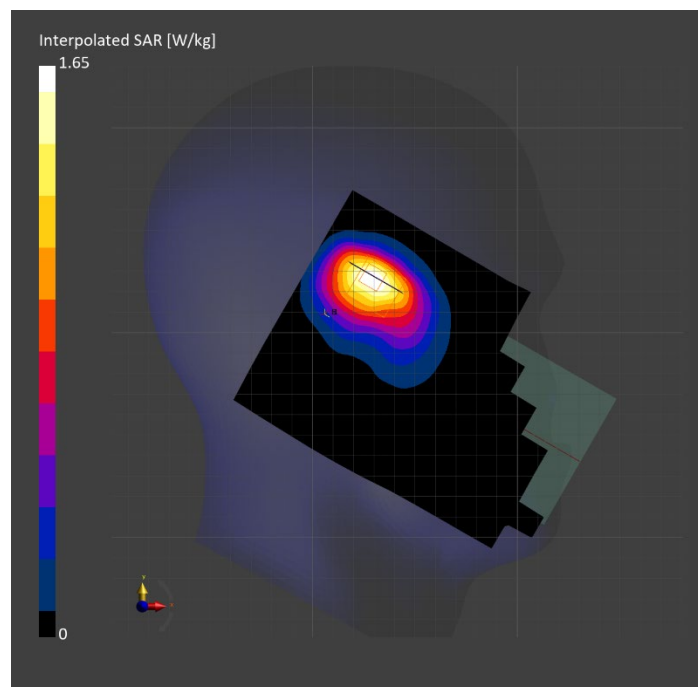
Probe Calibration Date	EX3DV4 - SN7807 2023-04-11	Phantom	Twin-SAM V8.0 (30deg probe tilt)
DAE Calibration Date	DAE4 Sn1799 2023-04-04	TSL Type	HBBL-600-10000
Software Version	16.2.4.2524		

Scan Setup

	Area Scan	Zoom Scan
Grid Extents [mm]	120.0 x 180.0	30.0 x 30.0 x 30.0
Grid Steps [mm]	15.0 x 15.0	6.0 x 6.0 x 1.5
Sensor Surface [mm]	3.0	1.4
Graded Grid	N/A	Yes
M2/M1 [%]		78.3
Dist 3dB Peak [mm]		9.2

Measurement Results

	Area Scan	Zoom Scan
psSAR1g [W/Kg]	0.899	0.865
psSAR10g [W/Kg]	0.504	0.491
Power Drift [dB]	N/A	-0.07



Measurement Report for PCS 1900: GPRS-FDD (TDMA, GMSK, TN 0-1), BACK

Exposure Conditions

Band	PCS 1900	TSL Permittivity	39.2
Frequency [MHz] Channel Number	1850.200 512	TSL Conductivity [S/m]	1.34
Group UID	GSM 10024-DAC	Phantom Section TSL	Flat HSL
Conversion Factor	8.43	Test Distance [mm]	5.00

Hardware Setup

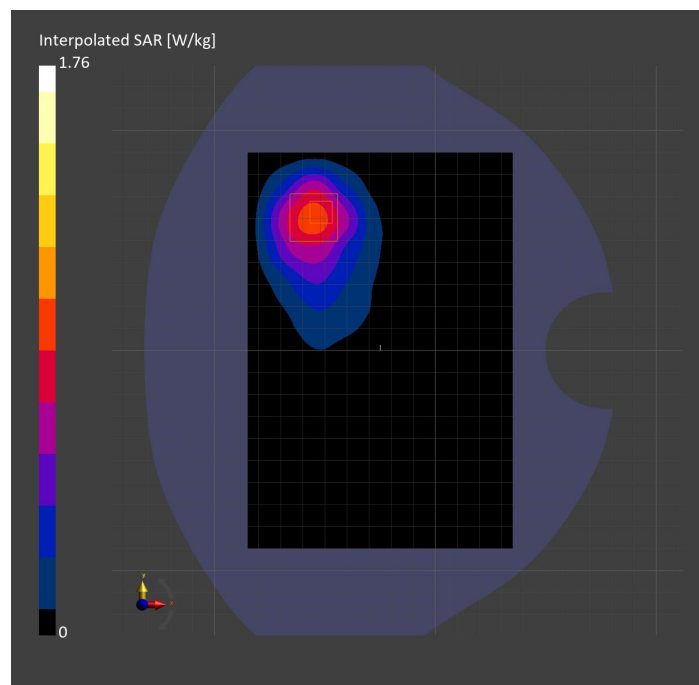
Probe Calibration Date	EX3DV4 - SN3991 2022-09-22	Phantom	Twin-SAM V8.0 (30deg probe tilt)
DAE Calibration Date	DAE4 Sn1674 2022-05-17	TSL Type	HBBL-600-10000
Software Version	16.2.4.2524		

Scan Setup

	Area Scan	Zoom Scan
Grid Extents [mm]	120.0 x 180.0	30.0 x 30.0 x 30.0
Grid Steps [mm]	15.0 x 15.0	6.0 x 6.0 x 1.5
Sensor Surface [mm]	3.0	1.4
Graded Grid	N/A	Yes
M2/M1 [%]		73.8
Dist 3dB Peak [mm]		11.9

Measurement Results

	Area Scan	Zoom Scan
psSAR1g [W/Kg]	0.813	0.828
psSAR10g [W/Kg]	0.467	0.448
Power Drift [dB]	N/A	-0.07



Measurement Report for Band 2: UMTS-FDD (WCDMA), EDGE TOP

Exposure Conditions

Band	Band 2	TSL Permittivity	38.4
Frequency [MHz] Channel Number	1852.400 9262	TSL Conductivity [S/m]	1.43
Group UID	WCDMA 10011-CAC	Phantom Section TSL	Flat HSL
Conversion Factor	7.53	Test Distance [mm]	5.00

Hardware Setup

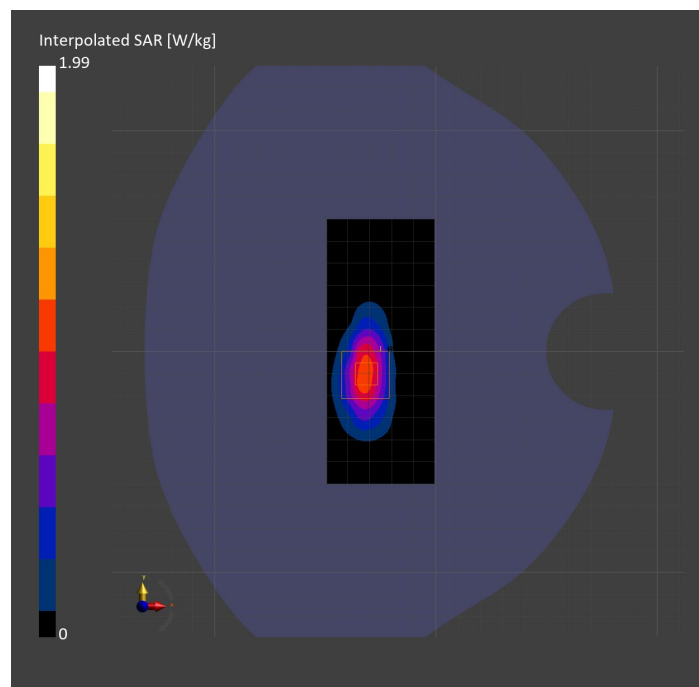
Probe Calibration Date	EX3DV4 - SN7807 2023-04-11	Phantom	Twin-SAM V8.0 (30deg probe tilt)
DAE Calibration Date	DAE4 Sn1799 2023-04-04	TSL Type	HBBL-600-10000
Software Version	16.2.4.2524		

Scan Setup

	Area Scan	Zoom Scan
Grid Extents [mm]	48.6 x 120.0	30.0 x 30.0 x 30.0
Grid Steps [mm]	8.1 x 15.0	6.0 x 6.0 x 1.5
Sensor Surface [mm]	3.0	1.4
Graded Grid	N/A	Yes
M2/M1 [%]		76.2
Dist 3dB Peak [mm]		7.3

Measurement Results

	Area Scan	Zoom Scan
psSAR1g [W/Kg]	0.884	0.903
psSAR10g [W/Kg]	0.424	0.420
Power Drift [dB]	N/A	-0.09



Measurement Report for Band 2: UMTS-FDD (WCDMA), CHEEK

Exposure Conditions

Band	Band 2	TSL Permittivity	39.6
Frequency [MHz] Channel Number	1852.400 9262	TSL Conductivity [S/m]	1.40
Group UID	WCDMA 10011-CAC	Phantom Section TSL	LeftHead HSL
Conversion Factor	7.53	Test Distance [mm]	0.00

Hardware Setup

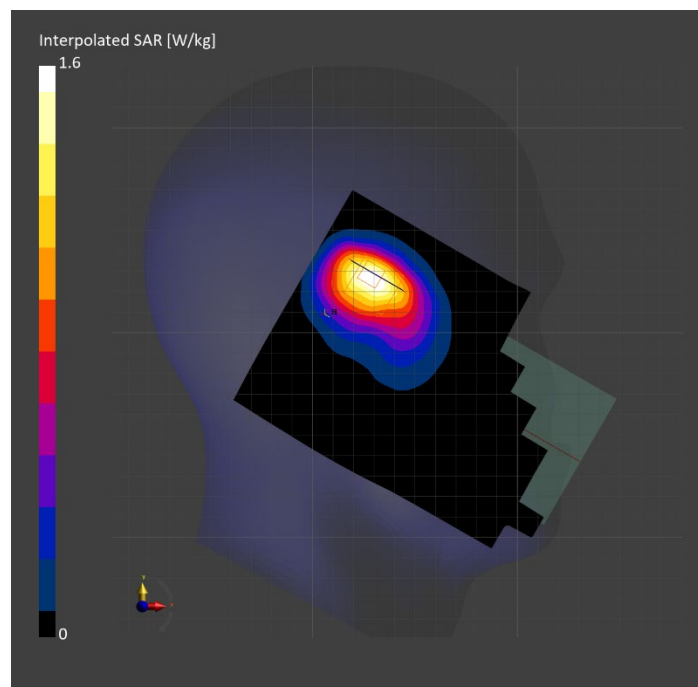
Probe Calibration Date	EX3DV4 - SN7807 2023-04-11	Phantom	Twin-SAM V8.0 (30deg probe tilt)
DAE Calibration Date	DAE4 Sn1799 2023-04-04	TSL Type	HBBL-600-10000
Software Version	16.2.4.2524		

Scan Setup

	Area Scan	Zoom Scan
Grid Extents [mm]	120.0 x 180.0	30.0 x 30.0 x 30.0
Grid Steps [mm]	15.0 x 15.0	6.0 x 6.0 x 1.5
Sensor Surface [mm]	3.0	1.4
Graded Grid	N/A	Yes
M2/M1 [%]		78.8
Dist 3dB Peak [mm]		9.2

Measurement Results

	Area Scan	Zoom Scan
psSAR1g [W/Kg]	0.878	0.854
psSAR10g [W/Kg]	0.494	0.485
Power Drift [dB]	N/A	-0.08



Measurement Report for Band 2: UMTS-FDD (WCDMA), BACK

Exposure Conditions

Band	Band 2	TSL Permittivity	39.8
Frequency [MHz] Channel Number	1852.400 9262	TSL Conductivity [S/m]	1.37
Group UID	WCDMA 10011-CAC	Phantom Section TSL	Flat HSL
Conversion Factor	8.43	Test Distance [mm]	5.00

Hardware Setup

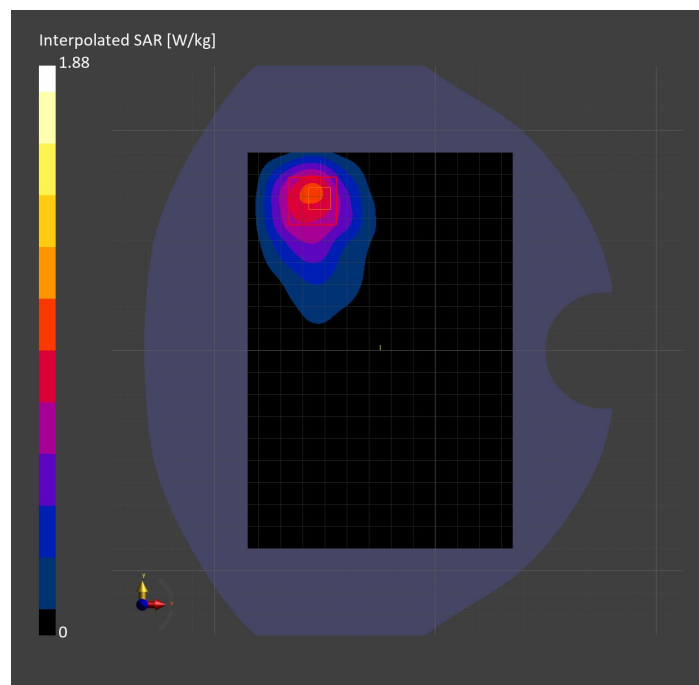
Probe Calibration Date	EX3DV4 - SN3991 2022-09-22	Phantom	Twin-SAM V8.0 (30deg probe tilt)
DAE Calibration Date	DAE4 Sn1674 2022-05-17	TSL Type	HBBL-600-10000
Software Version	16.2.4.2524		

Scan Setup

	Area Scan	Zoom Scan
Grid Extents [mm]	120.0 x 180.0	30.0 x 30.0 x 30.0
Grid Steps [mm]	15.0 x 15.0	6.0 x 6.0 x 1.5
Sensor Surface [mm]	3.0	1.4
Graded Grid	N/A	Yes
M2/M1 [%]		78.3
Dist 3dB Peak [mm]		10.8

Measurement Results

	Area Scan	Zoom Scan
psSAR1g [W/Kg]	0.826	0.882
psSAR10g [W/Kg]	0.470	0.460
Power Drift [dB]	N/A	-0.04



Measurement Report for Band 4: UMTS-FDD (WCDMA), EDGE TOP

Exposure Conditions

Band	Band 4	TSL Permittivity	38.4
Frequency [MHz] Channel Number	1752.600 1513	TSL Conductivity [S/m]	1.32
Group UID	WCDMA 10011-CAC	Phantom Section TSL	Flat HSL
Conversion Factor	8.66	Test Distance [mm]	5.00

Hardware Setup

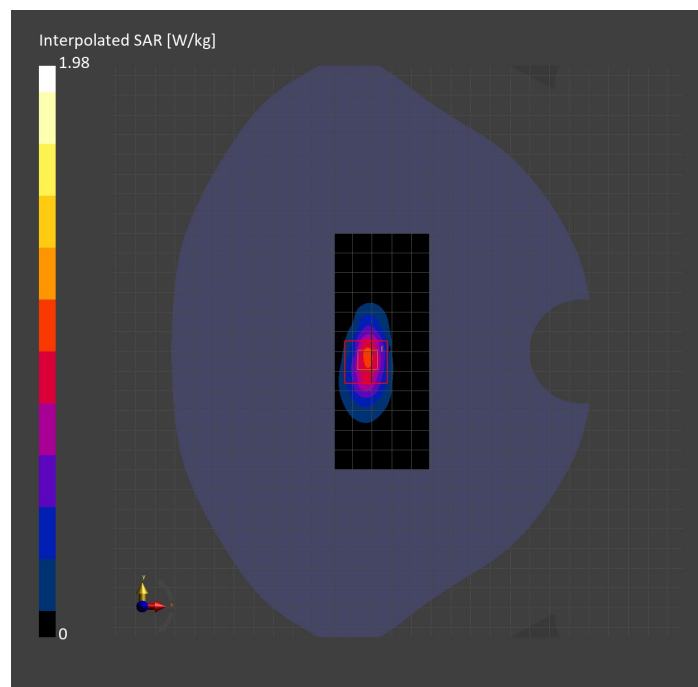
Probe Calibration Date	EX3DV4 - SN7569 2023-04-18	Phantom	Twin-SAM V8.0 (30deg probe tilt)
DAE Calibration Date	DAE4 Sn1547 2023-04-18	TSL Type	HBBL-600-10000
Software Version	16.2.4.2524		

Scan Setup

	Area Scan	Zoom Scan
Grid Extents [mm]	48.0 x 120.0	30.0 x 30.0 x 30.0
Grid Steps [mm]	8.0 x 15.0	6.0 x 6.0 x 1.5
Sensor Surface [mm]	3.0	1.4
Graded Grid	N/A	Yes
M2/M1 [%]		71.1
Dist 3dB Peak [mm]		7.2

Measurement Results

	Area Scan	Zoom Scan
psSAR1g [W/Kg]	0.814	0.847
psSAR10g [W/Kg]	0.381	0.384
Power Drift [dB]	N/A	-0.09



Measurement Report for Band 4: UMTS-FDD (WCDMA), BACK

Exposure Conditions

Band	Band 4	TSL Permittivity	40.3
Frequency [MHz] Channel Number	1752.600 1513	TSL Conductivity [S/m]	1.31
Group UID	WCDMA 10011-CAC	Phantom Section TSL	Flat HSL
Conversion Factor	8.98	Test Distance [mm]	5.00

Hardware Setup

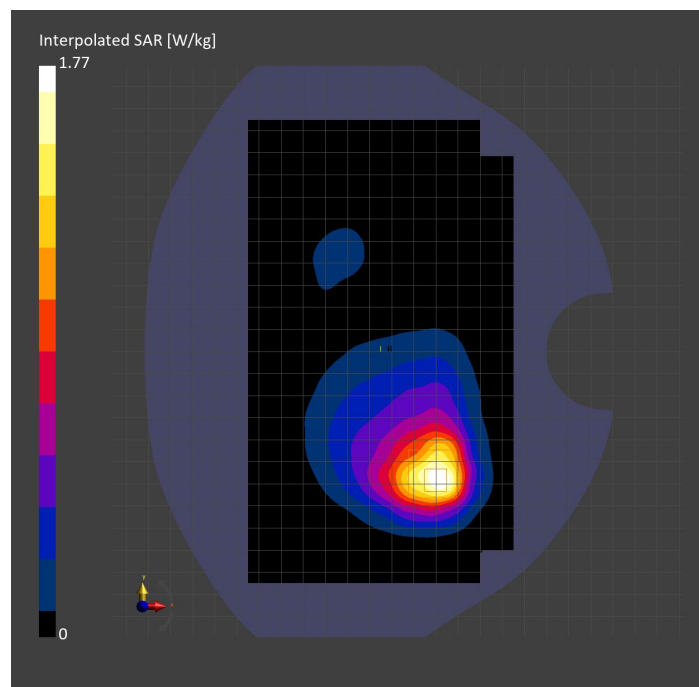
Probe Calibration Date	EX3DV4 - SN3989 2023-01-26	Phantom	Twin-SAM V8.0 (30deg probe tilt)
DAE Calibration Date	DAE4 Sn1257 2022-09-20	TSL Type	HBBL-600-10000
Software Version	16.2.4.2524		

Scan Setup

	Area Scan	Zoom Scan
Grid Extents [mm]	120.0 x 210.0	30.0 x 30.0 x 30.0
Grid Steps [mm]	15.0 x 15.0	6.0 x 6.0 x 1.5
Sensor Surface [mm]	3.0	1.4
Graded Grid	N/A	Yes
M2/M1 [%]		78.2
Dist 3dB Peak [mm]		11.4

Measurement Results

	Area Scan	Zoom Scan
psSAR1g [W/Kg]	0.776	0.836
psSAR10g [W/Kg]	0.432	0.432
Power Drift [dB]	N/A	-0.01



Measurement Report for Band 4: UMTS-FDD (WCDMA), CHEEK

Exposure Conditions

Band	Band 4	TSL Permittivity	41.0
Frequency [MHz] Channel Number	1752.600 1513	TSL Conductivity [S/m]	1.32
Group UID	WCDMA 10011-CAC	Phantom Section TSL	LeftHead HSL
Conversion Factor	8.66	Test Distance [mm]	0.00

Hardware Setup

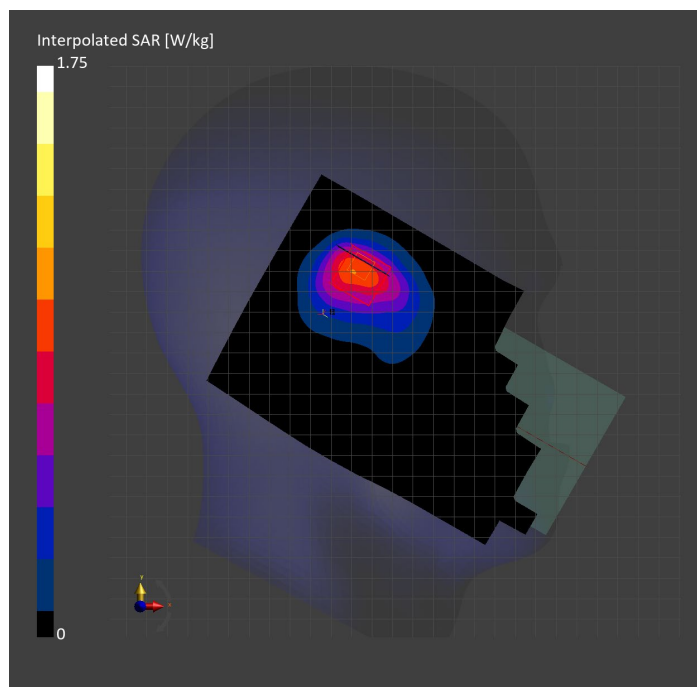
Probe Calibration Date	EX3DV4 - SN7569 2023-04-18	Phantom	Twin-SAM V8.0 (30deg probe tilt)
DAE Calibration Date	DAE4 Sn1547 2023-04-18	TSL Type	HBBL-600-10000
Software Version	16.2.4.2524		

Scan Setup

	Area Scan	Zoom Scan
Grid Extents [mm]	120.0 x 210.0	30.0 x 30.0 x 30.0
Grid Steps [mm]	15.0 x 15.0	6.0 x 6.0 x 1.5
Sensor Surface [mm]	3.0	1.4
Graded Grid	N/A	Yes
M2/M1 [%]		79.5
Dist 3dB Peak [mm]		7.3

Measurement Results

	Area Scan	Zoom Scan
psSAR1g [W/Kg]	0.815	0.834
psSAR10g [W/Kg]	0.470	0.461
Power Drift [dB]	N/A	-0.01



Measurement Report for Band 5: UMTS-FDD (WCDMA), BACK

Exposure Conditions

Band	Band 5	TSL Permittivity	43.4
Frequency [MHz] Channel Number	846.600 4233	TSL Conductivity [S/m]	0.874
Group UID	WCDMA 10011-CAC	Phantom Section TSL	Flat HSL
Conversion Factor	7.83	Test Distance [mm]	5.00

Hardware Setup

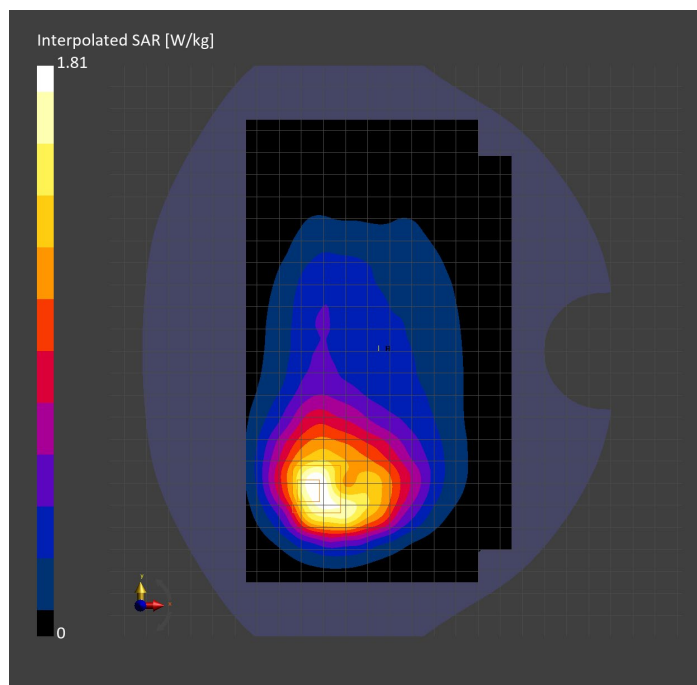
Probe Calibration Date	EX3DV4 - SN3749 2023-01-27	Phantom	Twin-SAM V8.0 (30deg probe tilt)
DAE Calibration Date	DAE4 Sn1357 2023-01-27	TSL Type	HBBL-600-10000
Software Version	16.2.4.2524		

Scan Setup

	Area Scan	Zoom Scan
Grid Extents [mm]	120.0 x 210.0	30.0 x 30.0 x 30.0
Grid Steps [mm]	15.0 x 15.0	6.0 x 6.0 x 1.5
Sensor Surface [mm]	3.0	1.4
Graded Grid	N/A	Yes
M2/M1 [%]		74.8
Dist 3dB Peak [mm]		9.6

Measurement Results

	Area Scan	Zoom Scan
psSAR1g [W/Kg]	0.797	0.825
psSAR10g [W/Kg]	0.517	0.456
Power Drift [dB]	N/A	-0.02



Measurement Report for Band 5: UMTS-FDD (WCDMA), EDGE RIGHT

Exposure Conditions

Band	Band 5	TSL Permittivity	43.4
Frequency [MHz] Channel Number	836.600 4183	TSL Conductivity [S/m]	0.871
Group UID	WCDMA 10011-CAC	Phantom Section TSL	Flat HSL
Conversion Factor	7.83	Test Distance [mm]	5.00

Hardware Setup

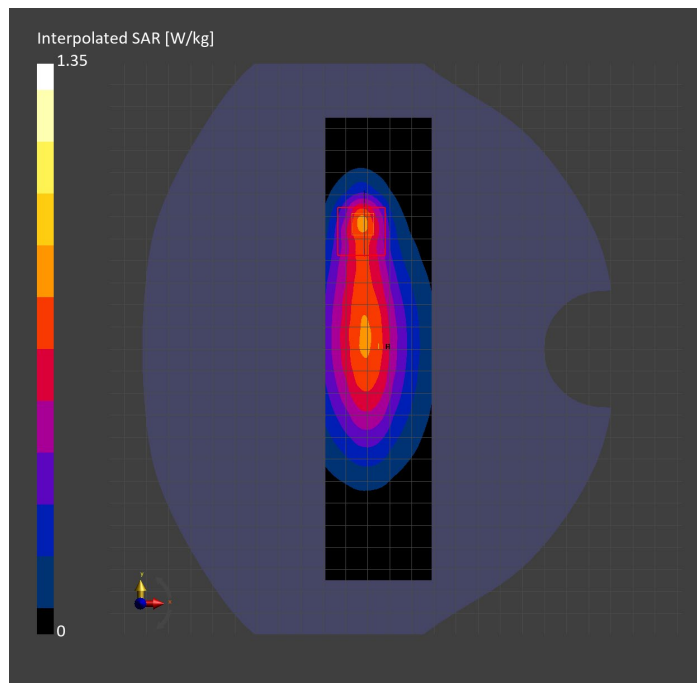
Probe Calibration Date	EX3DV4 - SN3749 2023-01-27	Phantom	Twin-SAM V8.0 (30deg probe tilt)
DAE Calibration Date	DAE4 Sn1357 2023-01-27	TSL Type	HBBL-600-10000
Software Version	16.2.4.2524		

Scan Setup

	Area Scan	Zoom Scan
Grid Extents [mm]	48.0 x 210.0	30.0 x 30.0 x 30.0
Grid Steps [mm]	8.0 x 15.0	6.0 x 6.0 x 1.5
Sensor Surface [mm]	3.0	1.4
Graded Grid	N/A	Yes
M2/M1 [%]		77.4
Dist 3dB Peak [mm]		8.1

Measurement Results

	Area Scan	Zoom Scan
psSAR1g [W/Kg]	0.697	0.630
psSAR10g [W/Kg]	0.455	0.349
Power Drift [dB]	N/A	-0.03



Measurement Report for Band 5: UMTS-FDD (WCDMA), CHEEK

Exposure Conditions

Band	Band 5	TSL Permittivity	42.7
Frequency [MHz] Channel Number	836.600 4183	TSL Conductivity [S/m]	0.874
Group UID	WCDMA 10011-CAC	Phantom Section TSL	RightHead HSL
Conversion Factor	8.76	Test Distance [mm]	0.00

Hardware Setup

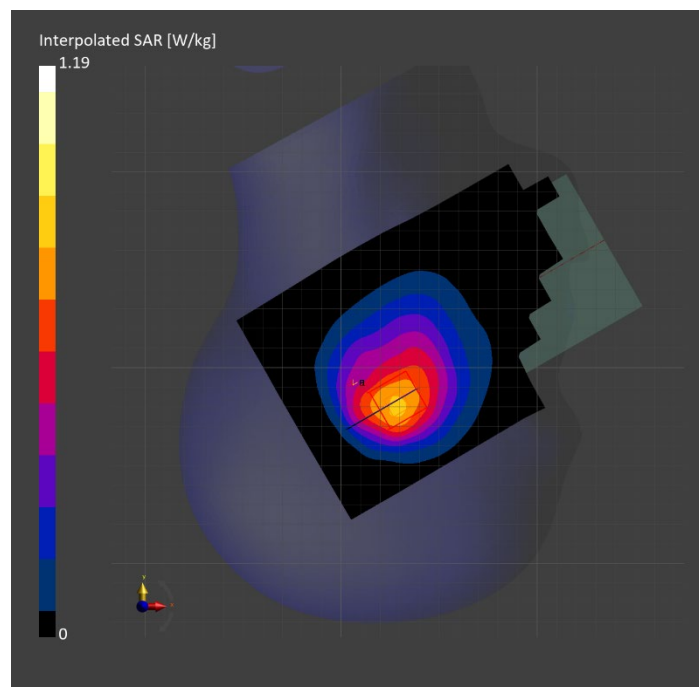
Probe Calibration Date	EX3DV4 - SN7806 2023-04-04	Phantom	Twin-SAM V8.0 (30deg probe tilt)
DAE Calibration Date	DAE4 Sn1784 2023-04-03	TSL Type	HBBL-600-10000
Software Version	16.2.4.2524		

Scan Setup

	Area Scan	Zoom Scan
Grid Extents [mm]	120.0 x 210.0	30.0 x 30.0 x 30.0
Grid Steps [mm]	15.0 x 15.0	6.0 x 6.0 x 1.5
Sensor Surface [mm]	3.0	1.4
Graded Grid	N/A	Yes
M2/M1 [%]		82.2
Dist 3dB Peak [mm]		10.9

Measurement Results

	Area Scan	Zoom Scan
psSAR1g [W/Kg]	0.705	0.705
psSAR10g [W/Kg]	0.472	0.476
Power Drift [dB]	N/A	0.06



Measurement Report for Band 5: LTE-FDD (SC-FDMA, 1 RB, 10 MHz, QPSK) RBPosition:Mid AntennaCfg:SISO, EDGE RIGHT

Exposure Conditions

Band	Band 5	TSL Permittivity	39.9
Frequency [MHz] Channel Number	836.500 20525	TSL Conductivity [S/m]	0.877
Group UID	LTE-FDD 10175-CAH	Phantom Section TSL	Flat HSL
Conversion Factor	8.76	Test Distance [mm]	5.00

Hardware Setup

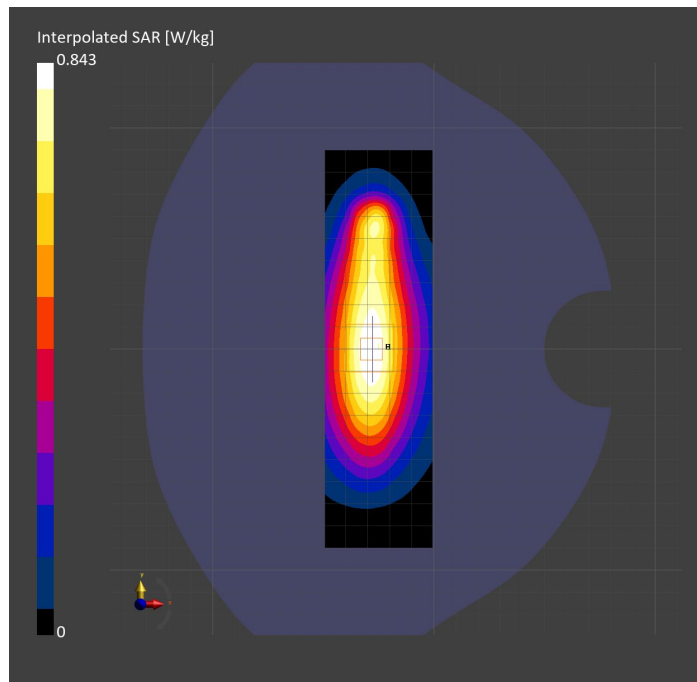
Probe Calibration Date	EX3DV4 - SN7806 2023-04-04	Phantom	Twin-SAM V8.0 (30deg probe tilt)
DAE Calibration Date	DAE4 Sn1784 2023-04-03	TSL Type	HBBL-600-10000
Software Version	16.2.4.2524		

Scan Setup

	Area Scan	Zoom Scan
Grid Extents [mm]	48.6 x 180.0	30.0 x 30.0 x 30.0
Grid Steps [mm]	8.1 x 15.0	6.0 x 6.0 x 1.5
Sensor Surface [mm]	3.0	1.4
Graded Grid	N/A	Yes
M2/M1 [%]		82.4
Dist 3dB Peak [mm]		14.9

Measurement Results

	Area Scan	Zoom Scan
psSAR1g [W/Kg]	0.487	0.498
psSAR10g [W/Kg]	0.319	0.326
Power Drift [dB]	N/A	-0.12



Measurement Report for Band 5: LTE-FDD (SC-FDMA, 1 RB, 10 MHz, QPSK) RBPosition:Mid AntennaCfg:SISO, CHEEK

Exposure Conditions

Band	Band 5	TSL Permittivity	42.7
Frequency [MHz] Channel Number	836.500 20525	TSL Conductivity [S/m]	0.874
Group UID	LTE-FDD 10175-CAH	Phantom Section TSL	RightHead HSL
Conversion Factor	8.76	Test Distance [mm]	0.00

Hardware Setup

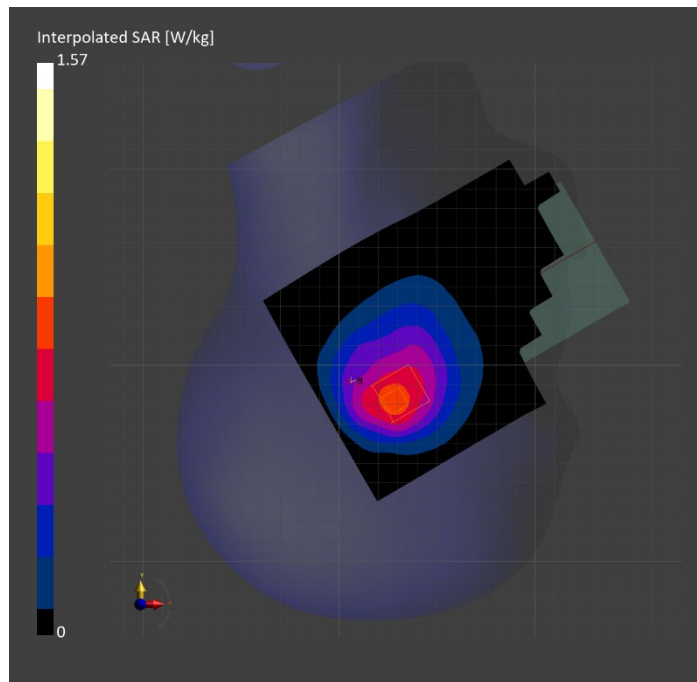
Probe Calibration Date	EX3DV4 - SN7806 2023-04-04	Phantom	Twin-SAM V8.0 (30deg probe tilt)
DAE Calibration Date	DAE4 Sn1784 2023-04-03	TSL Type	HBBL-600-10000
Software Version	16.2.4.2524		

Scan Setup

	Area Scan	Zoom Scan
Grid Extents [mm]	120.0 x 180.0	30.0 x 30.0 x 30.0
Grid Steps [mm]	15.0 x 15.0	6.0 x 6.0 x 1.5
Sensor Surface [mm]	3.0	1.4
Graded Grid	N/A	Yes
M2/M1 [%]		72.2
Dist 3dB Peak [mm]		16.8

Measurement Results

	Area Scan	Zoom Scan
psSAR1g [W/Kg]	0.736	0.755
psSAR10g [W/Kg]	0.492	0.509
Power Drift [dB]	N/A	-0.04



Measurement Report for Band 5: LTE-FDD (SC-FDMA, 1 RB, 10 MHz, QPSK) RBPosition:Mid AntennaCfg:SISO, BACK

Exposure Conditions

Band	Band 5	TSL Permittivity	42.7
Frequency [MHz] Channel Number	836.500 20525	TSL Conductivity [S/m]	0.874
Group UID	LTE-FDD 10175-CAH	Phantom Section TSL	Flat HSL
Conversion Factor	8.76	Test Distance [mm]	5.00

Hardware Setup

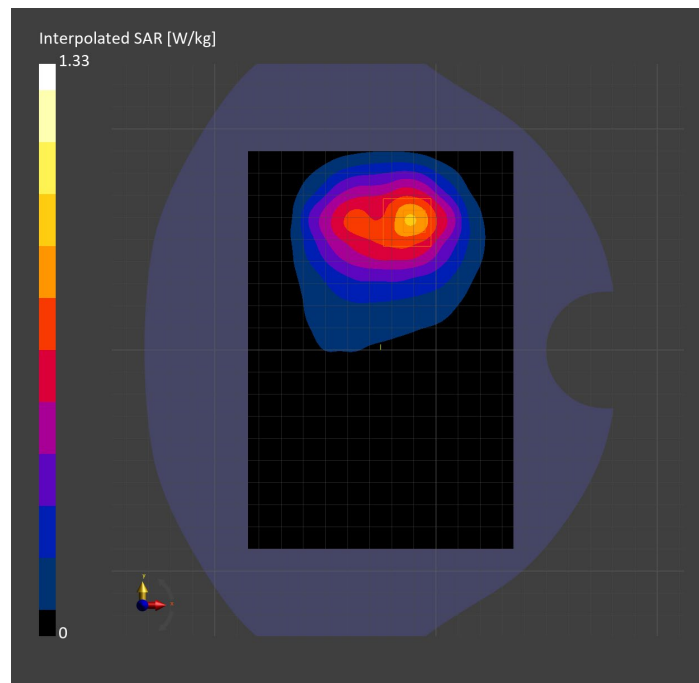
Probe Calibration Date	EX3DV4 - SN7806 2023-04-04	Phantom	Twin-SAM V8.0 (30deg probe tilt)
DAE Calibration Date	DAE4 Sn1784 2023-04-03	TSL Type	HBBL-600-10000
Software Version	16.2.4.2524		

Scan Setup

	Area Scan	Zoom Scan
Grid Extents [mm]	120.0 x 180.0	30.0 x 30.0 x 30.0
Grid Steps [mm]	15.0 x 15.0	6.0 x 6.0 x 1.5
Sensor Surface [mm]	3.0	1.4
Graded Grid	N/A	Yes
M2/M1 [%]		83.3
Dist 3dB Peak [mm]		15.3

Measurement Results

	Area Scan	Zoom Scan
psSAR1g [W/Kg]	0.761	0.762
psSAR10g [W/Kg]	0.486	0.465
Power Drift [dB]	N/A	0.01



Measurement Report for Band 7: LTE-FDD (SC-FDMA, 50% RB, 20 MHz, QPSK) RBPosition:Mid AntennaCfg:SISO, EDGE RIGHT

Exposure Conditions

Band	Band 7	TSL Permittivity	37.5
Frequency [MHz] Channel Number	2535.000 21100	TSL Conductivity [S/m]	1.94
Group UID	LTE-FDD 10297-AAE	Phantom Section TSL	Flat HSL
Conversion Factor	7.32	Test Distance [mm]	5.00

Hardware Setup

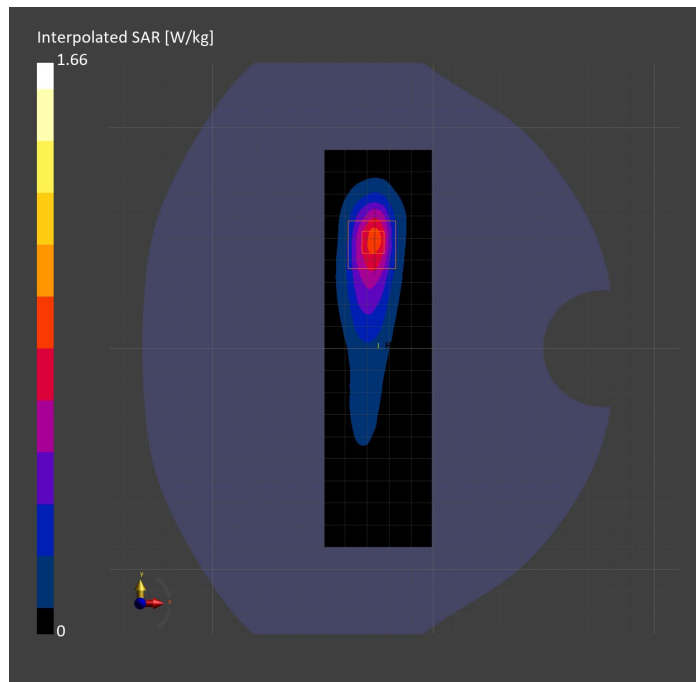
Probe Calibration Date	EX3DV4 - SN3885 2022-09-20	Phantom	Twin-SAM V5.0 (30deg probe tilt)
DAE Calibration Date	DAE4 Sn1548 2023-02-14	TSL Type	HBBL-600-10000
Software Version	16.2.4.2524		

Scan Setup

	Area Scan	Zoom Scan
Grid Extents [mm]	48.6 x 180.0	30.0 x 30.0 x 30.0
Grid Steps [mm]	8.1 x 10.0	5.0 x 5.0 x 1.5
Sensor Surface [mm]	3.0	1.4
Graded Grid	N/A	Yes
M2/M1 [%]		76.4
Dist 3dB Peak [mm]		8.0

Measurement Results

	Area Scan	Zoom Scan
psSAR1g [W/Kg]	0.681	0.716
psSAR10g [W/Kg]	0.310	0.309
Power Drift [dB]	N/A	0.00



Measurement Report for Band 7: LTE-FDD (SC-FDMA, 100% RB, 20 MHz, QPSK) AntennaCfg:SISO, BACK

Exposure Conditions

Band	Band 7	TSL Permittivity	39.4
Frequency [MHz] Channel Number	2535.000 21100	TSL Conductivity [S/m]	1.92
Group UID	LTE-FDD 10100-CAF	Phantom Section TSL	Flat HSL
Conversion Factor	7.32	Test Distance [mm]	5.00

Hardware Setup

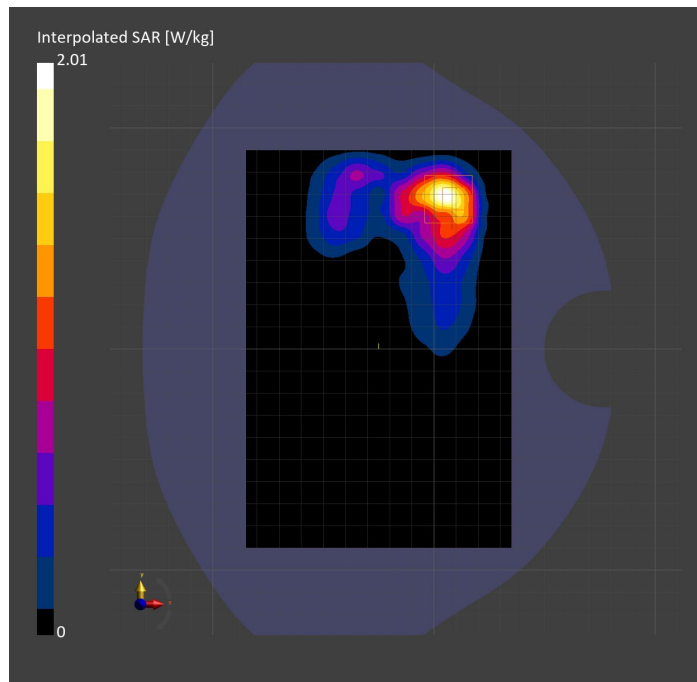
Probe Calibration Date	EX3DV4 - SN3885 2022-09-20	Phantom	Twin-SAM V5.0 (30deg probe tilt)
DAE Calibration Date	DAE4 Sn1548 2023-02-14	TSL Type	HBBL-600-10000
Software Version	16.2.4.2524		

Scan Setup

	Area Scan	Zoom Scan
Grid Extents [mm]	120.0 x 180.0	30.0 x 30.0 x 30.0
Grid Steps [mm]	10.0 x 10.0	5.0 x 5.0 x 1.5
Sensor Surface [mm]	3.0	1.4
Graded Grid	N/A	Yes
M2/M1 [%]		78.2
Dist 3dB Peak [mm]		5.7

Measurement Results

	Area Scan	Zoom Scan
psSAR1g [W/Kg]	0.797	0.802
psSAR10g [W/Kg]	0.366	0.314
Power Drift [dB]	N/A	0.04



Measurement Report for Band 7: LTE-FDD (SC-FDMA, 1 RB, 20 MHz, QPSK) RBPosition:Mid AntennaCfg:SISO, CHEEK

Exposure Conditions

Band	Band 7	TSL Permittivity	38.0
Frequency [MHz] Channel Number	2535.000 21100	TSL Conductivity [S/m]	1.96
Group UID	LTE-FDD 10169-CAF	Phantom Section TSL	LeftHead HSL
Conversion Factor	7.32	Test Distance [mm]	0.00

Hardware Setup

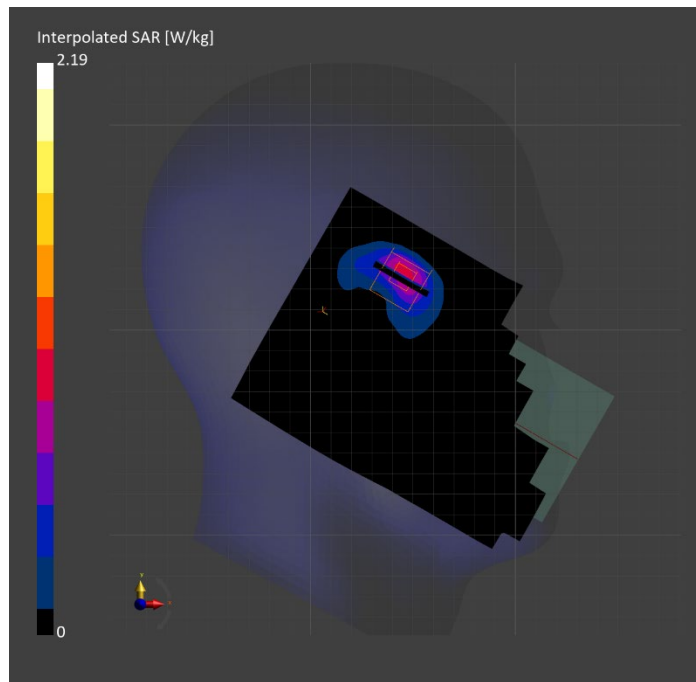
Probe Calibration Date	EX3DV4 - SN3885 2022-09-20	Phantom	Twin-SAM V5.0 (30deg probe tilt)
DAE Calibration Date	DAE4 Sn1548 2023-02-14	TSL Type	HBBL-600-10000
Software Version	16.2.4.2524		

Scan Setup

	Area Scan	Zoom Scan
Grid Extents [mm]	120.0 x 180.0	30.0 x 30.0 x 30.0
Grid Steps [mm]	10.0 x 10.0	5.0 x 5.0 x 1.5
Sensor Surface [mm]	3.0	1.4
Graded Grid	N/A	Yes
M2/M1 [%]		74.8
Dist 3dB Peak [mm]		6.5

Measurement Results

	Area Scan	Zoom Scan
psSAR1g [W/Kg]	0.733	0.839
psSAR10g [W/Kg]	0.338	0.336
Power Drift [dB]	N/A	0.01



Measurement Report for Band 12: LTE-FDD (SC-FDMA, 1 RB, 10 MHz, QPSK) RBPosition:Mid AntennaCfg:SISO, EDGE RIGHT

Exposure Conditions

Band	Band 12	TSL Permittivity	41.5
Frequency [MHz] Channel Number	707.500 23095	TSL Conductivity [S/m]	0.818
Group UID	LTE-FDD 10175-CAH	Phantom Section TSL	Flat HSL
Conversion Factor	10.62	Test Distance [mm]	5.00

Hardware Setup

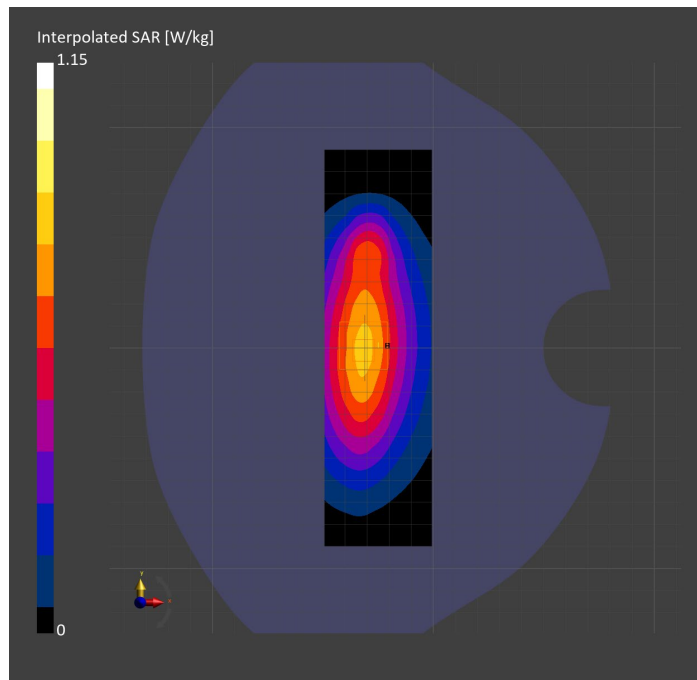
Probe Calibration Date	EX3DV4 - SN7589 2023-04-18	Phantom	Twin-SAM V5.0 (30deg probe tilt)
DAE Calibration Date	DAE4 Sn1544 2023-01-24	TSL Type	HBBL-600-10000
Software Version	16.2.4.2524		

Scan Setup

	Area Scan	Zoom Scan
Grid Extents [mm]	48.6 x 180.0	30.0 x 30.0 x 30.0
Grid Steps [mm]	8.1 x 15.0	6.0 x 6.0 x 1.5
Sensor Surface [mm]	3.0	1.4
Graded Grid	N/A	Yes
M2/M1 [%]		84.3
Dist 3dB Peak [mm]		> 15.0

Measurement Results

	Area Scan	Zoom Scan
psSAR1g [W/Kg]	0.700	0.709
psSAR10g [W/Kg]	0.469	0.474
Power Drift [dB]	N/A	-0.02



Measurement Report for Band 12: LTE-FDD (SC-FDMA, 1 RB, 10 MHz, QPSK) RBPosition:Mid AntennaCfg:SISO, CHEEK

Exposure Conditions

Band	Band 12	TSL Permittivity	41.9
Frequency [MHz] Channel Number	707.500 23095	TSL Conductivity [S/m]	0.881
Group UID	LTE-FDD 10175-CAH	Phantom Section TSL	RightHead HSL
Conversion Factor	8.93	Test Distance [mm]	0.00

Hardware Setup

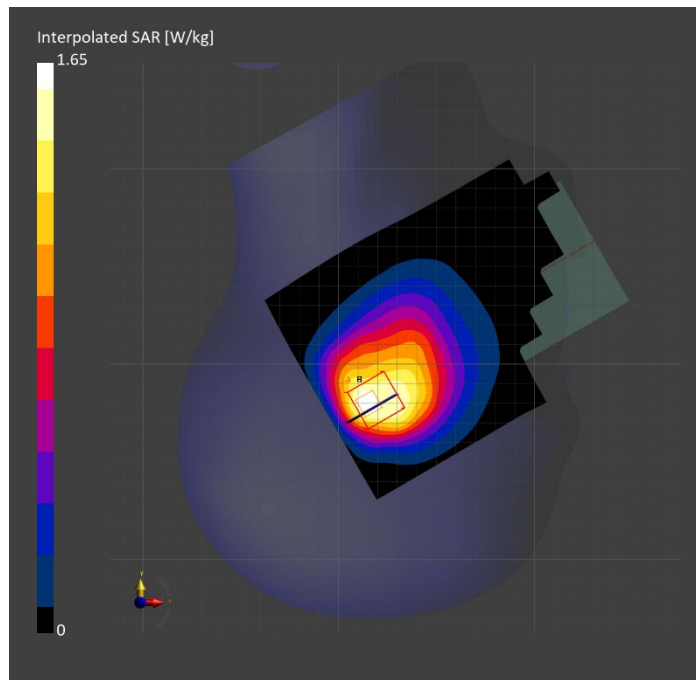
Probe Calibration Date	EX3DV4 - SN7448 2023-02-14	Phantom	Twin-SAM V5.0 (30deg probe tilt)
DAE Calibration Date	DAE4 Sn1472 2023-01-23	TSL Type	HBBL-600-10000
Software Version	16.2.4.2524		

Scan Setup

	Area Scan	Zoom Scan
Grid Extents [mm]	120.0 x 180.0	30.0 x 30.0 x 30.0
Grid Steps [mm]	15.0 x 15.0	6.0 x 6.0 x 1.5
Sensor Surface [mm]	3.0	1.4
Graded Grid	N/A	Yes
M2/M1 [%]		71.5
Dist 3dB Peak [mm]		6.1

Measurement Results

	Area Scan	Zoom Scan
psSAR1g [W/Kg]	0.691	0.728
psSAR10g [W/Kg]	0.471	0.433
Power Drift [dB]	N/A	-0.01



Measurement Report for Band 12: LTE-FDD (SC-FDMA, 1 RB, 10 MHz, QPSK) RBPosition:Mid AntennaCfg:SISO, BACK

Exposure Conditions

Band	Band 12	TSL Permittivity	44.4
Frequency [MHz] Channel Number	707.500 23095	TSL Conductivity [S/m]	0.836
Group UID	LTE-FDD 10175-CAH	Phantom Section TSL	Flat HSL
Conversion Factor	10.62	Test Distance [mm]	5.00

Hardware Setup

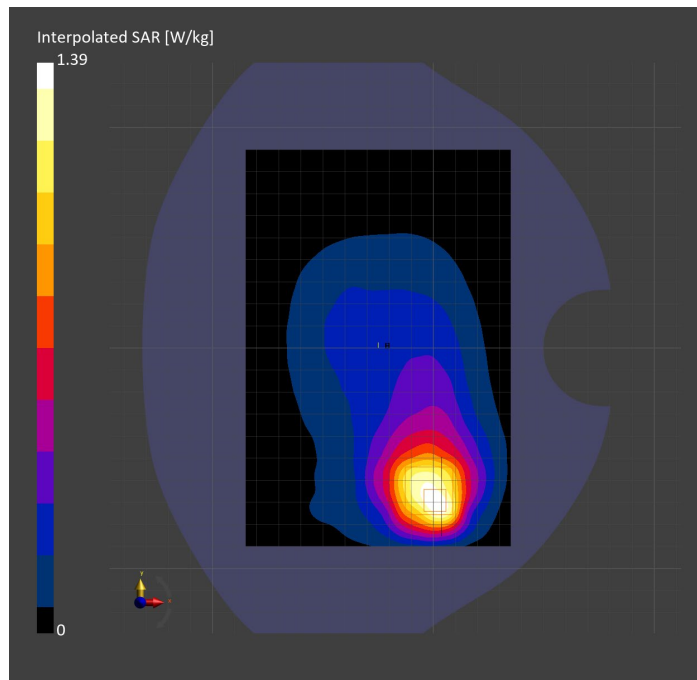
Probe Calibration Date	EX3DV4 - SN7589 2023-04-18	Phantom	Twin-SAM V5.0 (30deg probe tilt)
DAE Calibration Date	DAE4 Sn1544 2023-01-24	TSL Type	HBBL-600-10000
Software Version	16.2.4.2524		

Scan Setup

	Area Scan	Zoom Scan
Grid Extents [mm]	120.0 x 180.0	30.0 x 30.0 x 30.0
Grid Steps [mm]	15.0 x 15.0	6.0 x 6.0 x 1.5
Sensor Surface [mm]	3.0	1.4
Graded Grid	N/A	Yes
M2/M1 [%]		65.0
Dist 3dB Peak [mm]		8.1

Measurement Results

	Area Scan	Zoom Scan
psSAR1g [W/Kg]	0.469	0.507
psSAR10g [W/Kg]	0.303	0.264
Power Drift [dB]	N/A	-0.02



Measurement Report for Band 13: LTE-FDD (SC-FDMA, 1 RB, 10 MHz, QPSK) RBPosition:Mid AntennaCfg:SISO, EDGE RIGHT

Exposure Conditions

Band	Band 13	TSL Permittivity	41.2
Frequency [MHz] Channel Number	782.000 23230	TSL Conductivity [S/m]	0.849
Group UID	LTE-FDD 10175-CAH	Phantom Section TSL	Flat HSL
Conversion Factor	10.62	Test Distance [mm]	5.00

Hardware Setup

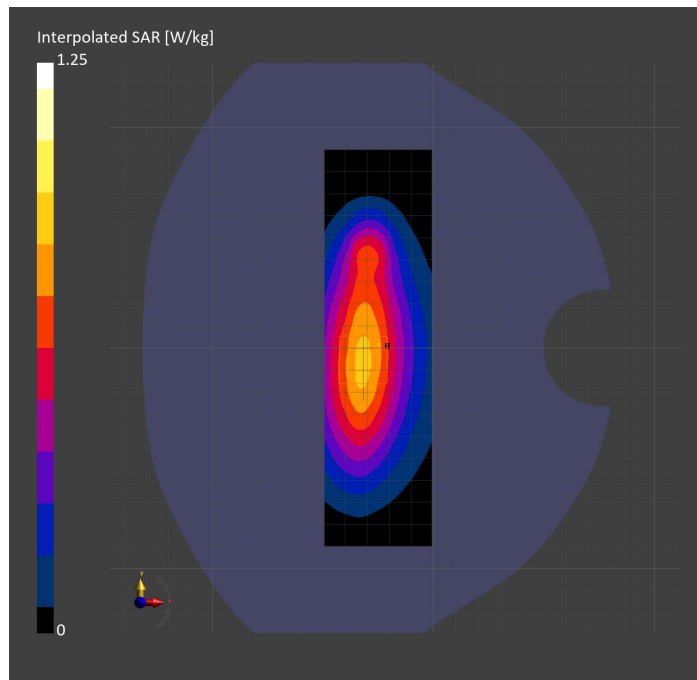
Probe Calibration Date	EX3DV4 - SN7589 2023-04-18	Phantom	Twin-SAM V5.0 (30deg probe tilt)
DAE Calibration Date	DAE4 Sn1544 2023-01-24	TSL Type	HBBL-600-10000
Software Version	16.2.4.2524		

Scan Setup

	Area Scan	Zoom Scan
Grid Extents [mm]	48.6 x 180.0	30.0 x 30.0 x 30.0
Grid Steps [mm]	8.1 x 15.0	6.0 x 6.0 x 1.5
Sensor Surface [mm]	3.0	1.4
Graded Grid	N/A	Yes
M2/M1 [%]		84.1
Dist 3dB Peak [mm]		17.2

Measurement Results

	Area Scan	Zoom Scan
psSAR1g [W/Kg]	0.750	0.759
psSAR10g [W/Kg]	0.497	0.500
Power Drift [dB]	N/A	0.01



Measurement Report for Band 13: LTE-FDD (SC-FDMA, 1 RB, 10 MHz, QPSK) RBPosition:Mid AntennaCfg:SISO, CHEEK

Exposure Conditions

Band	Band 13	TSL Permittivity	41.4
Frequency [MHz] Channel Number	782.000 23230	TSL Conductivity [S/m]	0.885
Group UID	LTE-FDD 10175-CAH	Phantom Section TSL	RightHead HSL
Conversion Factor	8.93	Test Distance [mm]	0.00

Hardware Setup

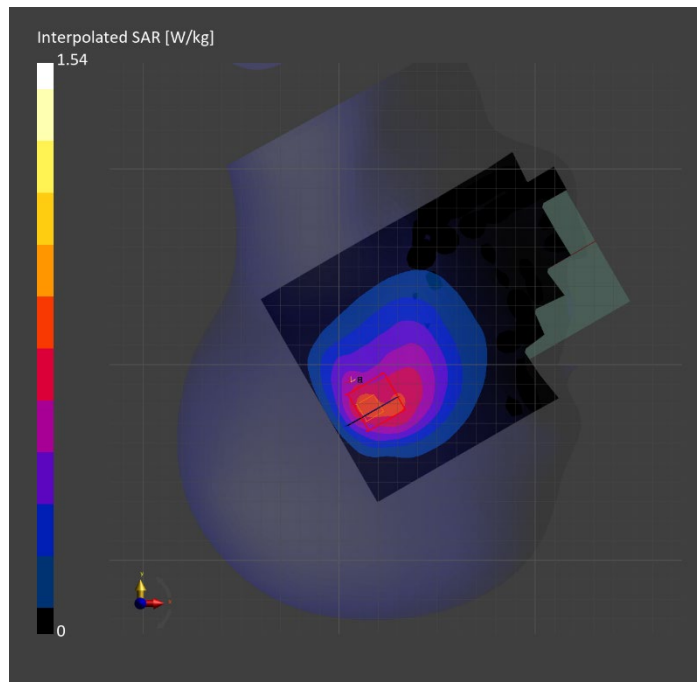
Probe Calibration Date	EX3DV4 - SN7448 2023-02-14	Phantom	Twin-SAM V5.0 (30deg probe tilt)
DAE Calibration Date	DAE4 Sn1472 2023-01-23	TSL Type	HBBL-600-10000
Software Version	16.2.4.2524		

Scan Setup

	Area Scan	Zoom Scan
Grid Extents [mm]	120.0 x 180.0	30.0 x 30.0 x 30.0
Grid Steps [mm]	15.0 x 15.0	6.0 x 6.0 x 1.5
Sensor Surface [mm]	3.0	1.4
Graded Grid	N/A	Yes
M2/M1 [%]		73.3
Dist 3dB Peak [mm]		8.1

Measurement Results

	Area Scan	Zoom Scan
psSAR1g [W/Kg]	0.715	0.715
psSAR10g [W/Kg]	0.485	0.453
Power Drift [dB]	N/A	-0.03



Measurement Report for Band 13: LTE-FDD (SC-FDMA, 1 RB, 10 MHz, QPSK) RBPosition:Mid AntennaCfg:SISO, BACK

Exposure Conditions

Band	Band 13	TSL Permittivity	41.4
Frequency [MHz] Channel Number	782.000 23230	TSL Conductivity [S/m]	0.885
Group UID	LTE-FDD 10175-CAH	Phantom Section TSL	Flat HSL
Conversion Factor	8.93	Test Distance [mm]	5.00

Hardware Setup

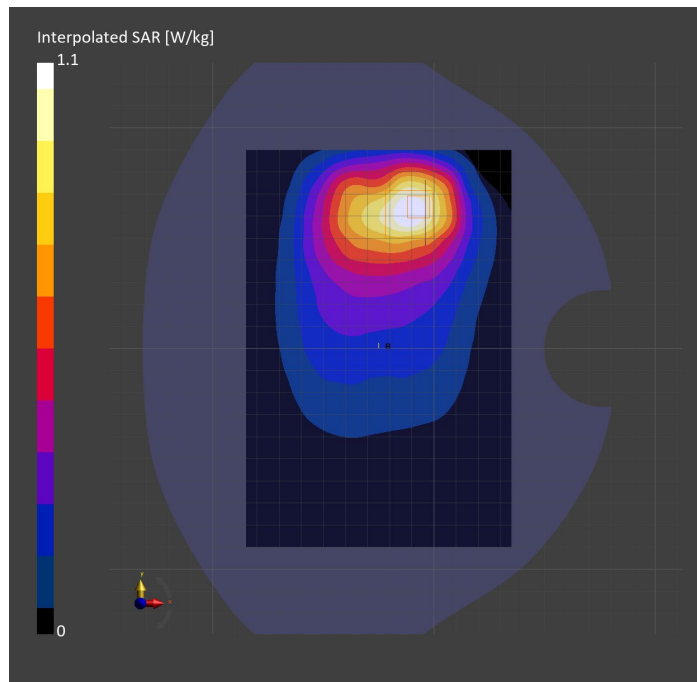
Probe Calibration Date	EX3DV4 - SN7448 2023-02-14	Phantom	Twin-SAM V5.0 (30deg probe tilt)
DAE Calibration Date	DAE4 Sn1472 2023-01-23	TSL Type	HBBL-600-10000
Software Version	16.2.4.2524		

Scan Setup

	Area Scan	Zoom Scan
Grid Extents [mm]	120.0 x 180.0	30.0 x 30.0 x 30.0
Grid Steps [mm]	15.0 x 15.0	6.0 x 6.0 x 1.5
Sensor Surface [mm]	3.0	1.4
Graded Grid	N/A	Yes
M2/M1 [%]		82.4
Dist 3dB Peak [mm]		16.7

Measurement Results

	Area Scan	Zoom Scan
psSAR1g [W/Kg]	0.616	0.613
psSAR10g [W/Kg]	0.405	0.365
Power Drift [dB]	N/A	-0.02



Measurement Report for Band 14: LTE-FDD (SC-FDMA, 1 RB, 10 MHz, QPSK) RBPosition:Mid AntennaCfg:SISO, EDGE RIGHT

Exposure Conditions

Band	Band 14	TSL Permittivity	43.1
Frequency [MHz] Channel Number	793.000 23330	TSL Conductivity [S/m]	0.891
Group UID	LTE-FDD 10175-CAH	Phantom Section TSL	Flat HSL
Conversion Factor	10.62	Test Distance [mm]	5.00

Hardware Setup

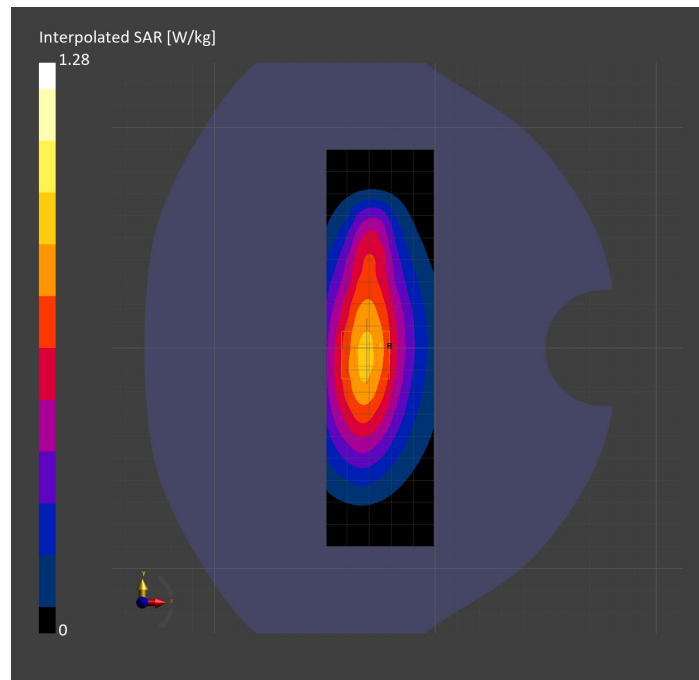
Probe Calibration Date	EX3DV4 - SN7589 2023-04-18	Phantom	Twin-SAM V5.0 (30deg probe tilt)
DAE Calibration Date	DAE4 Sn1544 2023-01-24	TSL Type	HBBL-600-10000
Software Version	16.2.4.2524		

Scan Setup

	Area Scan	Zoom Scan
Grid Extents [mm]	48.6 x 180.0	30.0 x 30.0 x 30.0
Grid Steps [mm]	8.1 x 15.0	6.0 x 6.0 x 1.5
Sensor Surface [mm]	3.0	1.4
Graded Grid	N/A	Yes
M2/M1 [%]		83.8
Dist 3dB Peak [mm]		16.4

Measurement Results

	Area Scan	Zoom Scan
psSAR1g [W/Kg]	0.767	0.775
psSAR10g [W/Kg]	0.506	0.508
Power Drift [dB]	N/A	-0.00



Measurement Report for Band 14: LTE-FDD (SC-FDMA, 1 RB, 10 MHz, QPSK) RBPosition:Mid AntennaCfg:SISO, CHEEK

Exposure Conditions

Band	Band 14	TSL Permittivity	41.4
Frequency [MHz] Channel Number	793.000 23330	TSL Conductivity [S/m]	0.889
Group UID	LTE-FDD 10175-CAH	Phantom Section TSL	RightHead HSL
Conversion Factor	8.93	Test Distance [mm]	0.00

Hardware Setup

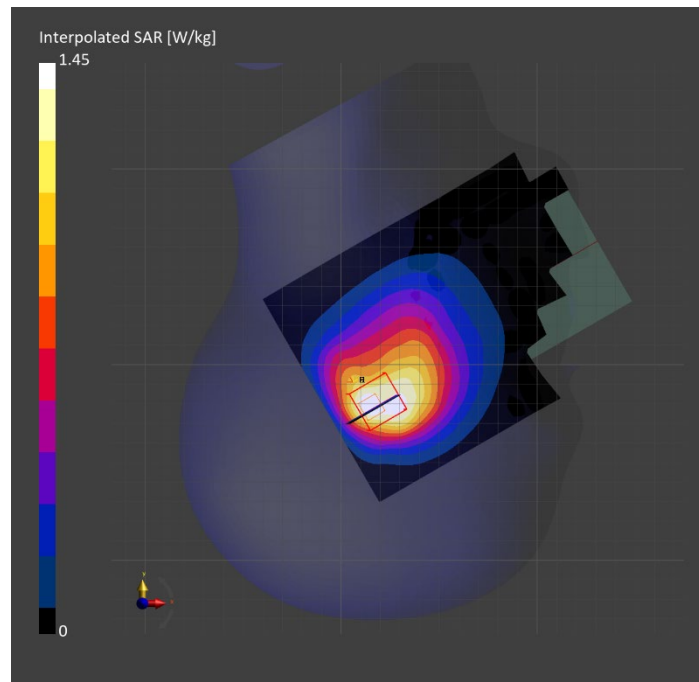
Probe Calibration Date	EX3DV4 - SN7448 2023-02-14	Phantom	Twin-SAM V5.0 (30deg probe tilt)
DAE Calibration Date	DAE4 Sn1472 2023-01-23	TSL Type	HBBL-600-10000
Software Version	16.2.4.2524		

Scan Setup

	Area Scan	Zoom Scan
Grid Extents [mm]	120.0 x 180.0	30.0 x 30.0 x 30.0
Grid Steps [mm]	15.0 x 15.0	6.0 x 6.0 x 1.5
Sensor Surface [mm]	3.0	1.4
Graded Grid	N/A	Yes
M2/M1 [%]		73.8
Dist 3dB Peak [mm]		8.2

Measurement Results

	Area Scan	Zoom Scan
psSAR1g [W/Kg]	0.679	0.679
psSAR10g [W/Kg]	0.462	0.427
Power Drift [dB]	N/A	0.01



Measurement Report for Band 14: LTE-FDD (SC-FDMA, 1 RB, 10 MHz, QPSK) RBPosition:Mid AntennaCfg:SISO, BACK

Exposure Conditions

Band	Band 14	TSL Permittivity	41.4
Frequency [MHz] Channel Number	793.000 23330	TSL Conductivity [S/m]	0.889
Group UID	LTE-FDD 10175-CAH	Phantom Section TSL	Flat HSL
Conversion Factor	8.93	Test Distance [mm]	5.00

Hardware Setup

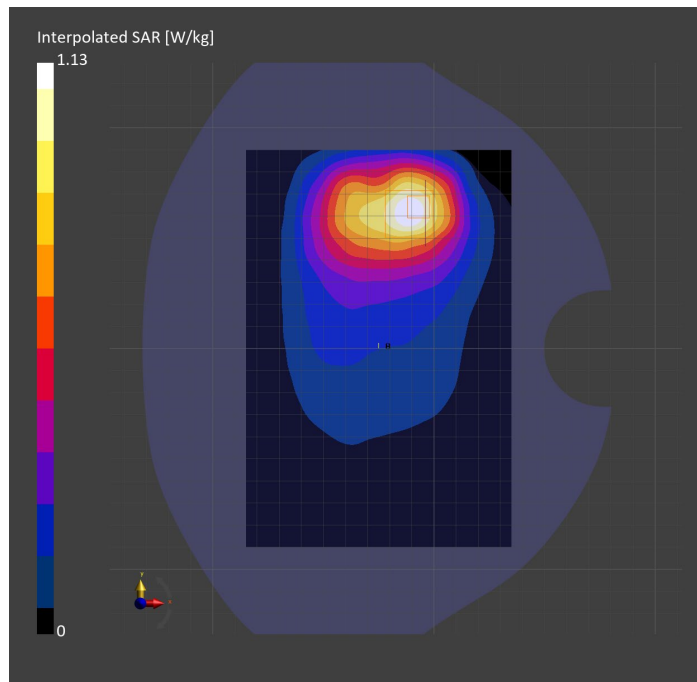
Probe Calibration Date	EX3DV4 - SN7448 2023-02-14	Phantom	Twin-SAM V5.0 (30deg probe tilt)
DAE Calibration Date	DAE4 Sn1472 2023-01-23	TSL Type	HBBL-600-10000
Software Version	16.2.4.2524		

Scan Setup

	Area Scan	Zoom Scan
Grid Extents [mm]	120.0 x 180.0	30.0 x 30.0 x 30.0
Grid Steps [mm]	15.0 x 15.0	6.0 x 6.0 x 1.5
Sensor Surface [mm]	3.0	1.4
Graded Grid	N/A	Yes
M2/M1 [%]		82.4
Dist 3dB Peak [mm]		15.7

Measurement Results

	Area Scan	Zoom Scan
psSAR1g [W/Kg]	0.645	0.636
psSAR10g [W/Kg]	0.421	0.376
Power Drift [dB]	N/A	0.00



Measurement Report for Band 25: LTE-FDD (SC-FDMA, 1 RB, 20 MHz, QPSK) RBPosition:Mid AntennaCfg:SISO, CHEEK

Exposure Conditions

Band	Band 25	TSL Permittivity	38.6
Frequency [MHz] Channel Number	1905.000 26590	TSL Conductivity [S/m]	1.43
Group UID	LTE-FDD 10169-CAF	Phantom Section TSL	RightHead HSL
Conversion Factor	7.53	Test Distance [mm]	0.00

Hardware Setup

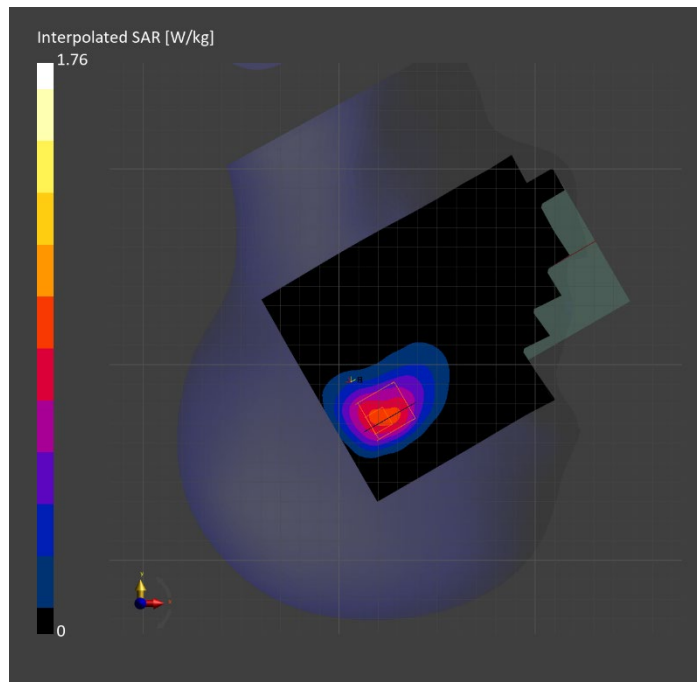
Probe Calibration Date	EX3DV4 - SN7807 2023-04-11	Phantom	Twin-SAM V8.0 (30deg probe tilt)
DAE Calibration Date	DAE4 Sn1799 2023-04-04	TSL Type	HBBL-600-10000
Software Version	16.2.4.2524		

Scan Setup

	Area Scan	Zoom Scan
Grid Extents [mm]	120.0 x 180.0	30.0 x 30.0 x 30.0
Grid Steps [mm]	15.0 x 15.0	6.0 x 6.0 x 1.5
Sensor Surface [mm]	3.0	1.4
Graded Grid	N/A	Yes
M2/M1 [%]		71.7
Dist 3dB Peak [mm]		7.7

Measurement Results

	Area Scan	Zoom Scan
psSAR1g [W/Kg]	0.777	0.750
psSAR10g [W/Kg]	0.440	0.415
Power Drift [dB]	N/A	-0.07



Measurement Report for Band 25: LTE-FDD (SC-FDMA, 1 RB, 20 MHz, QPSK) RBPosition:Mid AntennaCfg:SISO, EDGE TOP

Exposure Conditions

Band	Band 25	TSL Permittivity	39.6
Frequency [MHz] Channel Number	1860.000 26140	TSL Conductivity [S/m]	1.40
Group UID	LTE-FDD 10169-CAF	Phantom Section TSL	Flat HSL
Conversion Factor	7.53	Test Distance [mm]	5.00

Hardware Setup

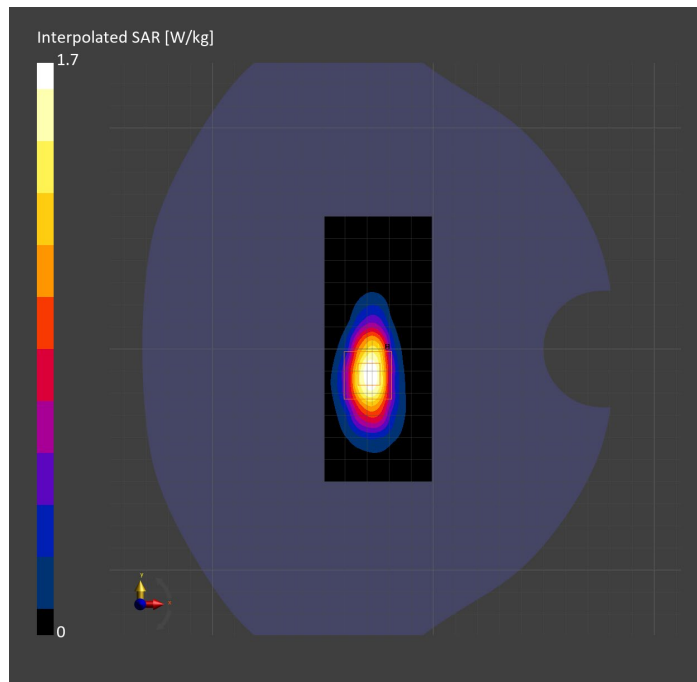
Probe Calibration Date	EX3DV4 - SN7807 2023-04-11	Phantom	Twin-SAM V8.0 (30deg probe tilt)
DAE Calibration Date	DAE4 Sn1799 2023-04-04	TSL Type	HBBL-600-10000
Software Version	16.2.4.2524		

Scan Setup

	Area Scan	Zoom Scan
Grid Extents [mm]	48.6 x 120.0	30.0 x 30.0 x 30.0
Grid Steps [mm]	8.1 x 15.0	6.0 x 6.0 x 1.5
Sensor Surface [mm]	3.0	1.4
Graded Grid	N/A	Yes
M2/M1 [%]		81.7
Dist 3dB Peak [mm]		7.6

Measurement Results

	Area Scan	Zoom Scan
psSAR1g [W/Kg]	0.832	0.836
psSAR10g [W/Kg]	0.401	0.391
Power Drift [dB]	N/A	-0.05



Measurement Report for Band 25: LTE-FDD (SC-FDMA, 50% RB, 20 MHz, QPSK) RBPosition:Mid AntennaCfg:SISO, BACK

Exposure Conditions

Band	Band 25	TSL Permittivity	41.6
Frequency [MHz] Channel Number	1905.000 26590	TSL Conductivity [S/m]	1.41
Group UID	LTE-FDD 10297-AAE	Phantom Section TSL	Flat HSL
Conversion Factor	8.43	Test Distance [mm]	5.00

Hardware Setup

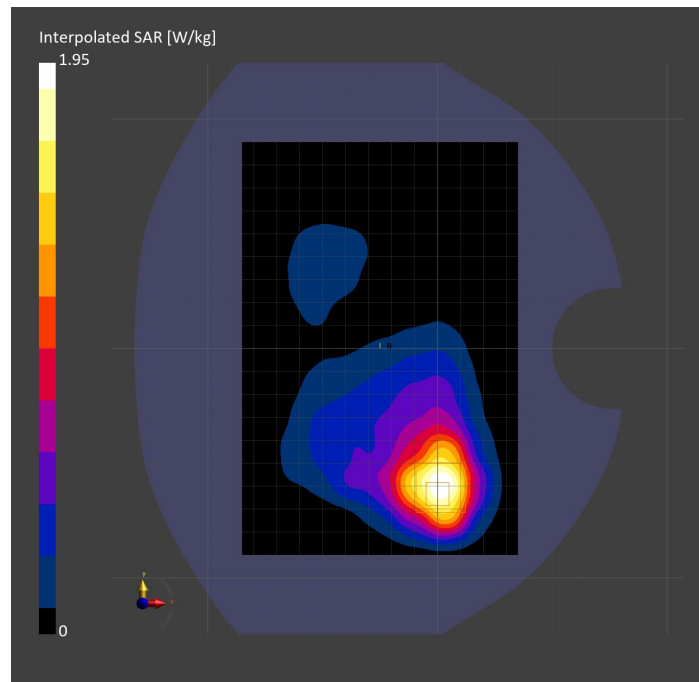
Probe Calibration Date	EX3DV4 - SN3991 2022-09-22	Phantom	Twin-SAM V8.0 (30deg probe tilt)
DAE Calibration Date	DAE4 Sn1674 2023-05-11	TSL Type	HBBL-600-10000
Software Version	16.2.4.2524		

Scan Setup

	Area Scan	Zoom Scan
Grid Extents [mm]	120.0 x 180.0	30.0 x 30.0 x 30.0
Grid Steps [mm]	15.0 x 15.0	6.0 x 6.0 x 1.5
Sensor Surface [mm]	3.0	1.4
Graded Grid	N/A	Yes
M2/M1 [%]		75.8
Dist 3dB Peak [mm]		10.4

Measurement Results

	Area Scan	Zoom Scan
psSAR1g [W/Kg]	0.759	0.878
psSAR10g [W/Kg]	0.422	0.445
Power Drift [dB]	N/A	-0.08



Measurement Report for Band 26: LTE-FDD (SC-FDMA, 1 RB, 10 MHz, QPSK) RBPosition:Mid AntennaCfg:SISO, EDGE RIGHT

Exposure Conditions

Band	Band 26	TSL Permittivity	39.9
Frequency [MHz] Channel Number	831.500 26865	TSL Conductivity [S/m]	0.876
Group UID	LTE-FDD 10175-CAH	Phantom Section TSL	Flat HSL
Conversion Factor	8.76	Test Distance [mm]	5.00

Hardware Setup

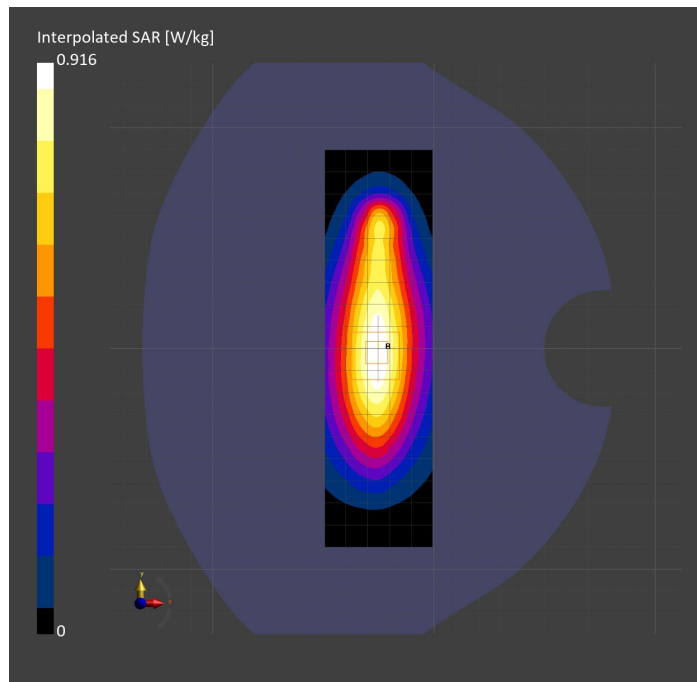
Probe Calibration Date	EX3DV4 - SN7806 2023-04-04	Phantom	Twin-SAM V8.0 (30deg probe tilt)
DAE Calibration Date	DAE4 Sn1784 2023-04-03	TSL Type	HBBL-600-10000
Software Version	16.2.4.2524		

Scan Setup

	Area Scan	Zoom Scan
Grid Extents [mm]	48.6 x 180.0	30.0 x 30.0 x 30.0
Grid Steps [mm]	8.1 x 15.0	6.0 x 6.0 x 1.5
Sensor Surface [mm]	3.0	1.4
Graded Grid	N/A	Yes
M2/M1 [%]		81.0
Dist 3dB Peak [mm]		14.4

Measurement Results

	Area Scan	Zoom Scan
psSAR1g [W/Kg]	0.523	0.531
psSAR10g [W/Kg]	0.341	0.344
Power Drift [dB]	N/A	-0.09



Measurement Report for Band 26: LTE-FDD (SC-FDMA, 1 RB, 10 MHz, QPSK) RBPosition:Mid AntennaCfg:SISO, CHEEK

Exposure Conditions

Band	Band 26	TSL Permittivity	40.1
Frequency [MHz] Channel Number	831.500 26865	TSL Conductivity [S/m]	0.865
Group UID	LTE-FDD 10175-CAH	Phantom Section TSL	RightHead HSL
Conversion Factor	7.83	Test Distance [mm]	0.00

Hardware Setup

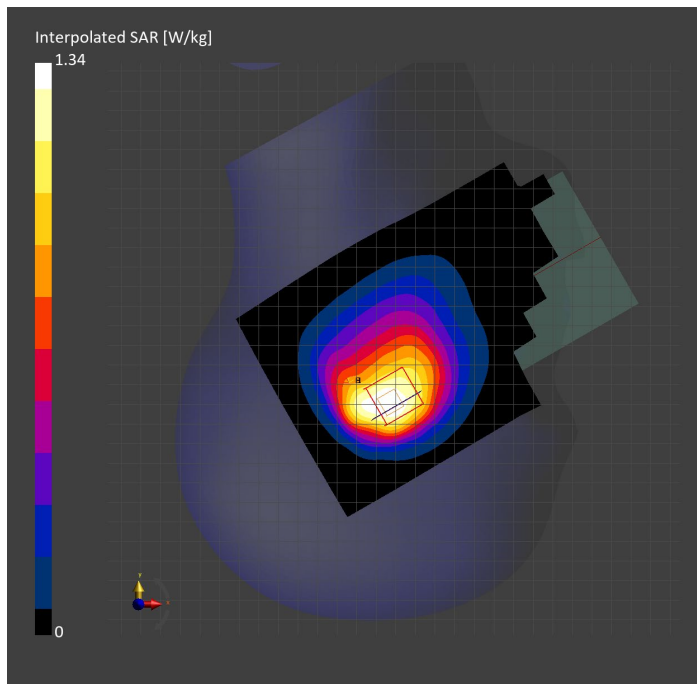
Probe Calibration Date	EX3DV4 - SN3749 2023-01-27	Phantom	Twin-SAM V8.0 (30deg probe tilt)
DAE Calibration Date	DAE4 Sn1357 2023-01-27	TSL Type	HBBL-600-10000
Software Version	16.2.4.2524		

Scan Setup

	Area Scan	Zoom Scan
Grid Extents [mm]	120.0 x 210.0	30.0 x 30.0 x 30.0
Grid Steps [mm]	15.0 x 15.0	6.0 x 6.0 x 1.5
Sensor Surface [mm]	3.0	1.4
Graded Grid	N/A	Yes
M2/M1 [%]		83.5
Dist 3dB Peak [mm]		10.8

Measurement Results

	Area Scan	Zoom Scan
psSAR1g [W/Kg]	0.755	0.766
psSAR10g [W/Kg]	0.507	0.513
Power Drift [dB]	N/A	-0.15



Measurement Report for Band 26: LTE-FDD (SC-FDMA, 1 RB, 10 MHz, QPSK) RBPosition:Mid AntennaCfg:SISO, BACK

Exposure Conditions

Band	Band 26	TSL Permittivity	43.3
Frequency [MHz] Channel Number	831.500 26865	TSL Conductivity [S/m]	0.944
Group UID	LTE-FDD 10175-CAH	Phantom Section TSL	Flat HSL
Conversion Factor	7.83	Test Distance [mm]	5.00

Hardware Setup

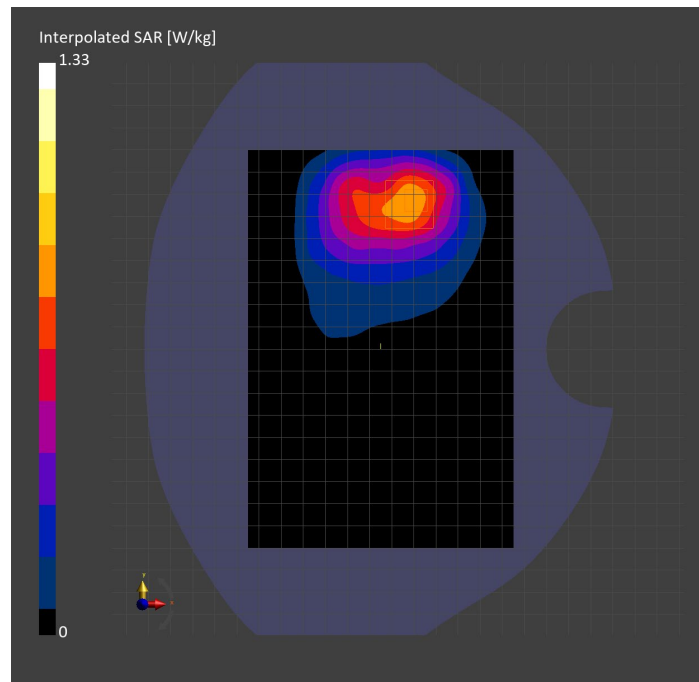
Probe Calibration Date	EX3DV4 - SN3749 2023-01-27	Phantom	Twin-SAM V8.0 (30deg probe tilt)
DAE Calibration Date	DAE4 Sn1357 2023-01-27	TSL Type	HBBL-600-10000
Software Version	16.2.4.2524		

Scan Setup

	Area Scan	Zoom Scan	Secondary Zoom Scan
Grid Extents [mm]	120.0 x 180.0	30.0 x 30.0 x 30.0	30.0 x 30.0 x 30.0
Grid Steps [mm]	15.0 x 15.0	6.0 x 6.0 x 1.5	6.0 x 6.0 x 1.5
Sensor Surface [mm]	3.0	1.4	1.4
Graded Grid	N/A	Yes	Yes
M2/M1 [%]		82.8	81.7
Dist 3dB Peak [mm]		15.6	14.0

Measurement Results

	Area Scan	Zoom Scan	Secondary Zoom Scan
psSAR1g [W/Kg]	0.742	0.772	0.772
psSAR10g [W/Kg]	0.490	0.467	0.466
Power Drift [dB]	N/A	-0.28	-0.22



Measurement Report for Band 30: LTE-FDD (SC-FDMA, 100% RB, 10 MHz, QPSK) RBPosition:Mid AntennaCfg:SISO, CHEEK

Exposure Conditions

Band	Band 30	TSL Permittivity	39.0
Frequency [MHz] Channel Number	2310.000 27710	TSL Conductivity [S/m]	1.72
Group UID	LTE-FDD 10108-CAH	Phantom Section TSL	RightHead HSL
Conversion Factor	7.71	Test Distance [mm]	0.00

Hardware Setup

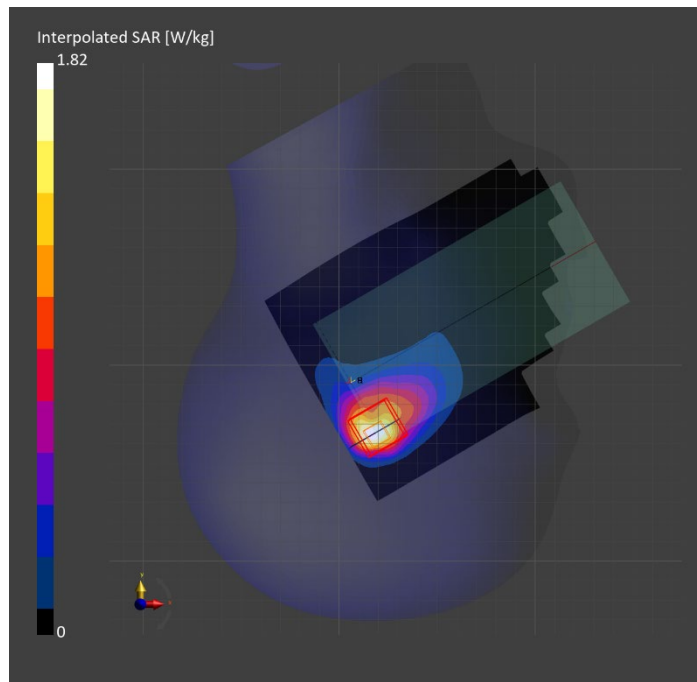
Probe Calibration Date	EX3DV4 - SN7482 2023-04-18	Phantom	Twin-SAM V8.0 (30deg probe tilt)
DAE Calibration Date	DAE4 Sn1380 2023-02-14	TSL Type	HBBL-600-10000
Software Version	16.2.4.2524		

Scan Setup

	Area Scan	Zoom Scan
Grid Extents [mm]	120.0 x 180.0	30.0 x 30.0 x 30.0
Grid Steps [mm]	10.0 x 10.0	5.0 x 5.0 x 1.5
Sensor Surface [mm]	3.0	1.4
Graded Grid	N/A	Yes
M2/M1 [%]		73.6
Dist 3dB Peak [mm]		7.1

Measurement Results

	Area Scan	Zoom Scan
psSAR1g [W/Kg]	0.702	0.732
psSAR10g [W/Kg]	0.354	0.332
Power Drift [dB]	N/A	-0.03



Measurement Report for Band 30: LTE-FDD (SC-FDMA, 100% RB, 10 MHz, QPSK) RBPosition:Mid AntennaCfg:SISO, EDGE LEFT

Exposure Conditions

Band	Band 30	TSL Permittivity	37.9
Frequency [MHz] Channel Number	2310.000 27710	TSL Conductivity [S/m]	1.66
Group UID	LTE-FDD 10108-CAH	Phantom Section TSL	Flat HSL
Conversion Factor	7.71	Test Distance [mm]	5.00

Hardware Setup

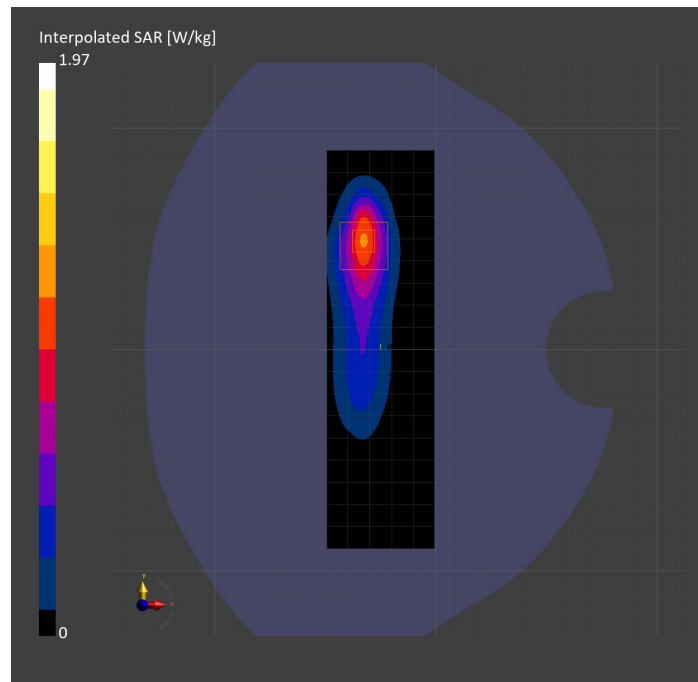
Probe Calibration Date	EX3DV4 - SN7482 2023-04-18	Phantom	Twin-SAM V8.0 (30deg probe tilt)
DAE Calibration Date	DAE4 Sn1380 2023-02-14	TSL Type	HBBL-600-10000
Software Version	16.2.4.2524		

Scan Setup

	Area Scan	Zoom Scan
Grid Extents [mm]	48.6 x 180.0	30.0 x 30.0 x 30.0
Grid Steps [mm]	8.1 x 10.0	5.0 x 5.0 x 1.5
Sensor Surface [mm]	3.0	1.4
Graded Grid	N/A	Yes
M2/M1 [%]		77.1
Dist 3dB Peak [mm]		8.0

Measurement Results

	Area Scan	Zoom Scan
psSAR1g [W/Kg]	0.891	0.896
psSAR10g [W/Kg]	0.422	0.424
Power Drift [dB]	N/A	-0.00



Measurement Report for Band 30: LTE-FDD (SC-FDMA, 100% RB, 10 MHz, QPSK) AntennaCfg:SISO, BACK

Exposure Conditions

Band	Band 30	TSL Permittivity	37.9
Frequency [MHz] Channel Number	2310.000 27710	TSL Conductivity [S/m]	1.66
Group UID	LTE-FDD 10108-CAH	Phantom Section TSL	Flat HSL
Conversion Factor	7.71	Test Distance [mm]	5.00

Hardware Setup

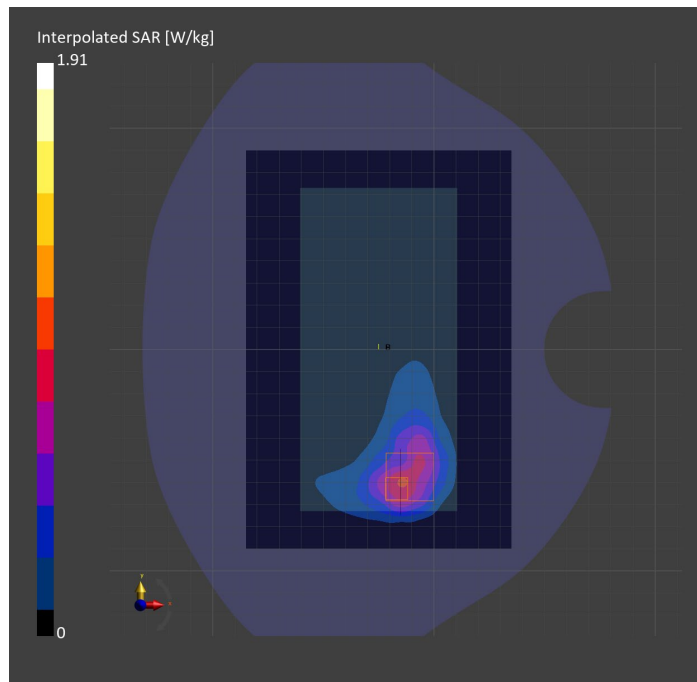
Probe Calibration Date	EX3DV4 - SN7482 2023-04-18	Phantom	Twin-SAM V8.0 (30deg probe tilt)
DAE Calibration Date	DAE4 Sn1380 2023-02-14	TSL Type	HBBL-600-10000
Software Version	16.2.4.2524		

Scan Setup

	Area Scan	Zoom Scan
Grid Extents [mm]	120.0 x 180.0	30.0 x 30.0 x 30.0
Grid Steps [mm]	10.0 x 10.0	5.0 x 5.0 x 1.5
Sensor Surface [mm]	3.0	1.4
Graded Grid	N/A	Yes
M2/M1 [%]		75.5
Dist 3dB Peak [mm]		7.7

Measurement Results

	Area Scan	Zoom Scan
psSAR1g [W/Kg]	0.762	0.790
psSAR10g [W/Kg]	0.392	0.350
Power Drift [dB]	N/A	-0.02



Measurement Report for Band 41: LTE-TDD (SC-FDMA, 50% RB, 20 MHz, QPSK, UL Subframe=2,3,4,7,8,9) RBPosition:Mid AntennaCfg:SISO, CHEEK

Exposure Conditions

Band	Band 41	TSL Permittivity	37.3
Frequency [MHz] Channel Number	2593.000 40620	TSL Conductivity [S/m]	2.02
Group UID	LTE-TDD 10494-AAG	Phantom Section TSL	RightHead HSL
Conversion Factor	7.32	Test Distance [mm]	0.00

Hardware Setup

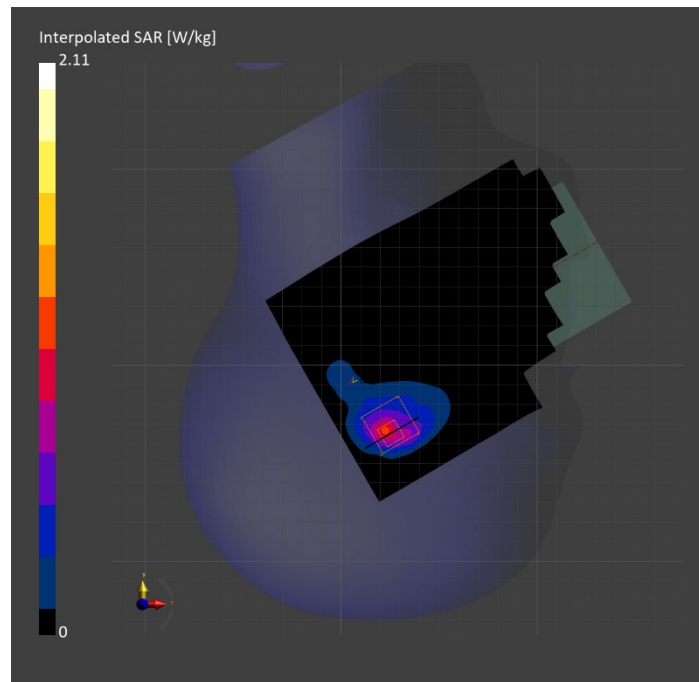
Probe Calibration Date	EX3DV4 - SN3885 2022-09-20	Phantom	Twin-SAM V5.0 (30deg probe tilt)
DAE Calibration Date	DAE4 Sn1548 2023-02-14	TSL Type	HBBL-600-10000
Software Version	16.2.4.2524		

Scan Setup

	Area Scan	Zoom Scan
Grid Extents [mm]	120.0 x 180.0	30.0 x 30.0 x 30.0
Grid Steps [mm]	10.0 x 10.0	4.5 x 4.5 x 1.5
Sensor Surface [mm]	3.0	1.4
Graded Grid	N/A	Yes
M2/M1 [%]		73.2
Dist 3dB Peak [mm]		5.8

Measurement Results

	Area Scan	Zoom Scan
psSAR1g [W/Kg]	0.763	0.810
psSAR10g [W/Kg]	0.342	0.337
Power Drift [dB]	N/A	0.02



Measurement Report for Band 41: LTE-TDD (SC-FDMA, 1 RB, 20 MHz, QPSK, UL Subframe=2,3,4,7,8,9) RBPosition:Mid AntennaCfg:SISO, BACK

Exposure Conditions

Band	Band 41	TSL Permittivity	37.1
Frequency [MHz] Channel Number	2636.500 41055	TSL Conductivity [S/m]	2.02
Group UID	LTE-TDD 10435-AAG	Phantom Section TSL	Flat HSL
Conversion Factor	7.32	Test Distance [mm]	5.00

Hardware Setup

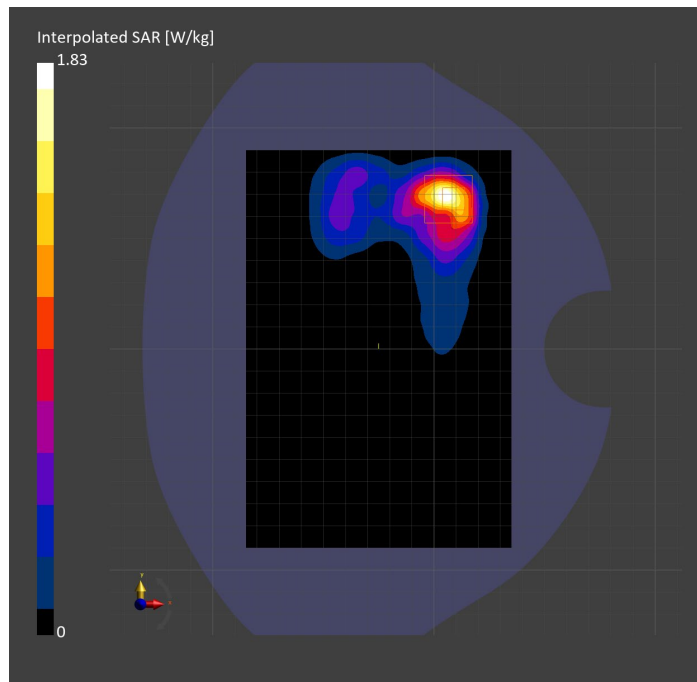
Probe Calibration Date	EX3DV4 - SN3885 2022-09-20	Phantom	Twin-SAM V5.0 (30deg probe tilt)
DAE Calibration Date	DAE4 Sn1548 2023-02-14	TSL Type	HBBL-600-10000
Software Version	16.2.4.2524		

Scan Setup

	Area Scan	Zoom Scan
Grid Extents [mm]	120.0 x 180.0	30.0 x 30.0 x 30.0
Grid Steps [mm]	10.0 x 10.0	5.0 x 5.0 x 1.5
Sensor Surface [mm]	3.0	1.4
Graded Grid	N/A	Yes
M2/M1 [%]		78.0
Dist 3dB Peak [mm]		5.7

Measurement Results

	Area Scan	Zoom Scan
psSAR1g [W/Kg]	0.713	0.734
psSAR10g [W/Kg]	0.316	0.287
Power Drift [dB]	N/A	0.06



Measurement Report for Band 41: LTE-TDD (SC-FDMA, 1 RB, 20 MHz, QPSK, UL Subframe=2,3,4,7,8,9) RBPosition:Mid AntennaCfg:SISO, EDGE RIGHT

Exposure Conditions

Band	Band 41	TSL Permittivity	39.5
Frequency [MHz] Channel Number	2506.000 39750	TSL Conductivity [S/m]	1.90
Group UID	LTE-TDD 10435-AAG	Phantom Section TSL	Flat HSL
Conversion Factor	7.32	Test Distance [mm]	5.00

Hardware Setup

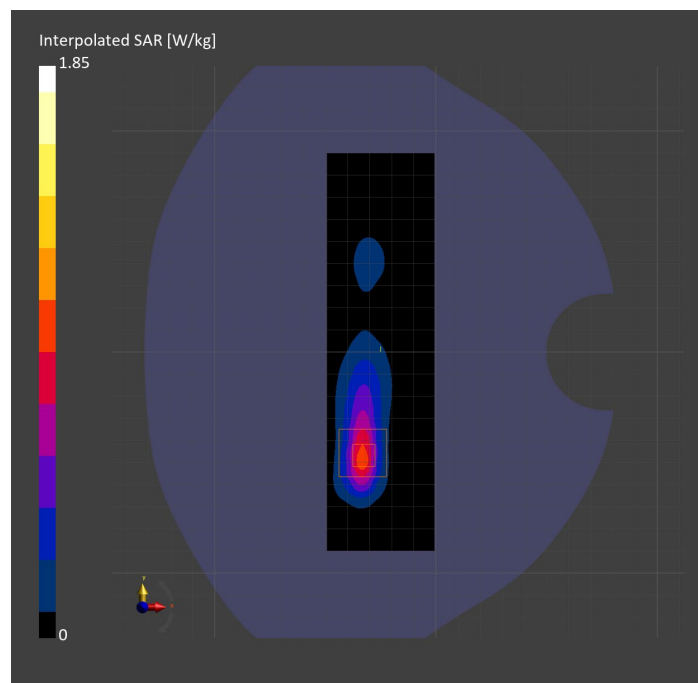
Probe Calibration Date	EX3DV4 - SN3885 2022-09-20	Phantom	Twin-SAM V5.0 (30deg probe tilt)
DAE Calibration Date	DAE4 Sn1548 2023-02-14	TSL Type	HBBL-600-10000
Software Version	16.2.4.2524		

Scan Setup

	Area Scan	Zoom Scan
Grid Extents [mm]	48.6 x 180.0	30.0 x 30.0 x 30.0
Grid Steps [mm]	8.1 x 10.0	5.0 x 5.0 x 1.5
Sensor Surface [mm]	3.0	1.4
Graded Grid	N/A	Yes
M2/M1 [%]		75.2
Dist 3dB Peak [mm]		6.0

Measurement Results

	Area Scan	Zoom Scan
psSAR1g [W/Kg]	0.724	0.744
psSAR10g [W/Kg]	0.298	0.299
Power Drift [dB]	N/A	-0.11



Measurement Report for Band 48: LTE-TDD (SC-FDMA, 1 RB, 20 MHz, QPSK, UL Subframe=2,3,4,7,8,9) RBPosition:Mid AntennaCfg:SISO, EDGE RIGHT

Exposure Conditions

Band	Band 48	TSL Permittivity	39.4
Frequency [MHz] Channel Number	3560.000 55340	TSL Conductivity [S/m]	2.84
Group UID	LTE-TDD 10435-AAG	Phantom Section TSL	Flat HSL
Conversion Factor	6.87	Test Distance [mm]	5.00

Hardware Setup

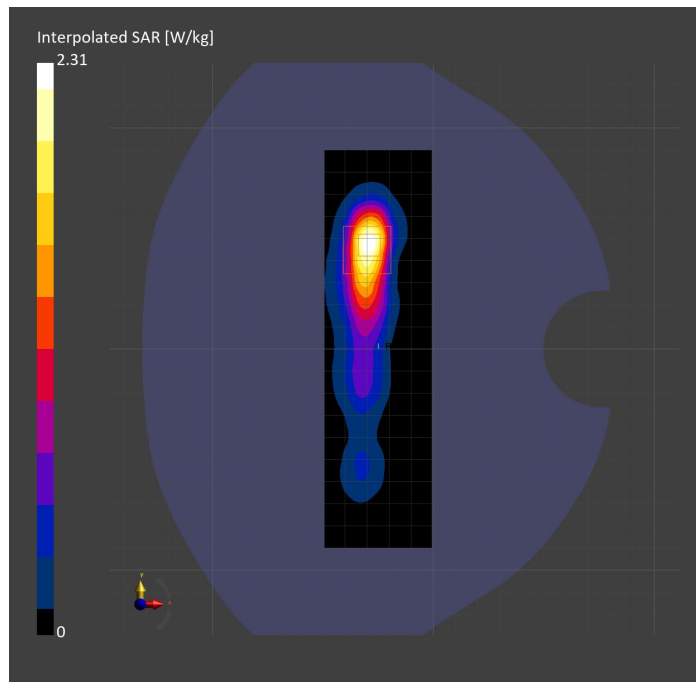
Probe Calibration Date	EX3DV4 - SN7335 2023-01-26	Phantom	Twin-SAM V8.0 (30deg probe tilt)
DAE Calibration Date	DAE4ip Sn1619 2023-04-18	TSL Type	HBBL-600-10000
Software Version	16.2.4.2524		

Scan Setup

	Area Scan	Zoom Scan
Grid Extents [mm]	48.6 x 180.0	30.0 x 30.0 x 28.0
Grid Steps [mm]	8.1 x 10.0	5.0 x 5.0 x 1.4
Sensor Surface [mm]	3.0	1.4
Graded Grid	N/A	Yes
M2/M1 [%]		72.8
Dist 3dB Peak [mm]		7.7

Measurement Results

	Area Scan	Zoom Scan
psSAR1g [W/Kg]	0.806	0.831
psSAR10g [W/Kg]	0.319	0.315
Power Drift [dB]	N/A	0.01



Measurement Report for Band 48: LTE-TDD (SC-FDMA, 100% RB, 20 MHz, QPSK, UL Subframe=2,3,4,7,8,9) AntennaCfg:SISO, CHEEK

Exposure Conditions

Band	Band 48	TSL Permittivity	39.3
Frequency [MHz] Channel Number	3646.700 56207	TSL Conductivity [S/m]	3.01
Group UID	LTE-TDD 10512-AAG	Phantom Section TSL	RightHead HSL
Conversion Factor	6.66	Test Distance [mm]	0.00

Hardware Setup

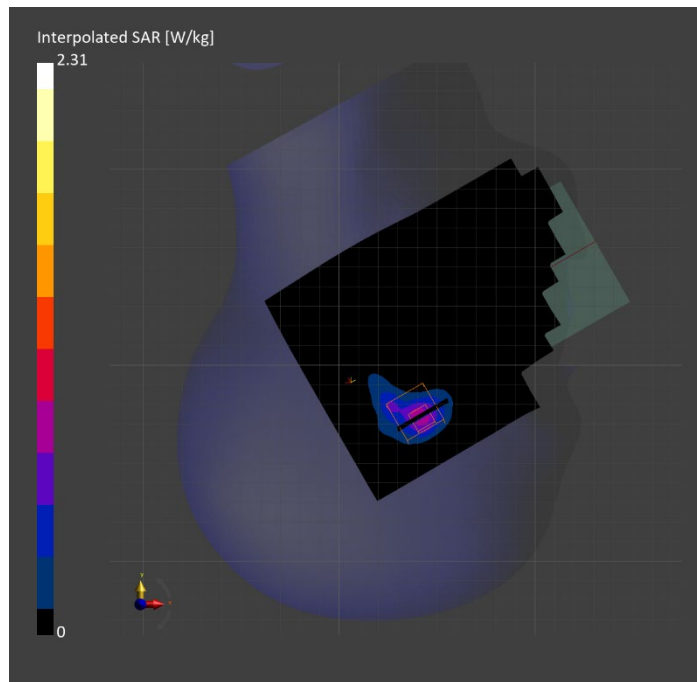
Probe Calibration Date	EX3DV4 - SN3990 2023-02-17	Phantom	Twin-SAM V5.0 (30deg probe tilt)
DAE Calibration Date	DAE4 Sn1545 2023-02-14	TSL Type	HBBL-600-10000
Software Version	16.2.4.2524		

Scan Setup

	Area Scan	Zoom Scan
Grid Extents [mm]	120.0 x 180.0	30.0 x 30.0 x 28.0
Grid Steps [mm]	10.0 x 10.0	5.0 x 5.0 x 1.4
Sensor Surface [mm]	3.0	1.4
Graded Grid	N/A	Yes
M2/M1 [%]		70.9
Dist 3dB Peak [mm]		4.0

Measurement Results

	Area Scan	Zoom Scan
psSAR1g [W/Kg]	0.619	0.712
psSAR10g [W/Kg]	0.243	0.244
Power Drift [dB]	N/A	0.02



Measurement Report for Band 48: LTE-TDD (SC-FDMA, 50% RB, 20 MHz, QPSK, UL Subframe=2,3,4,7,8,9) RBPosition:Mid AntennaCfg:SISO, BACK

Exposure Conditions

Band	Band 48	TSL Permittivity	38.4
Frequency [MHz] Channel Number	3690.000 56640	TSL Conductivity [S/m]	3.00
Group UID	LTE-TDD 10494-AAG	Phantom Section TSL	Flat HSL
Conversion Factor	6.92	Test Distance [mm]	5.00

Hardware Setup

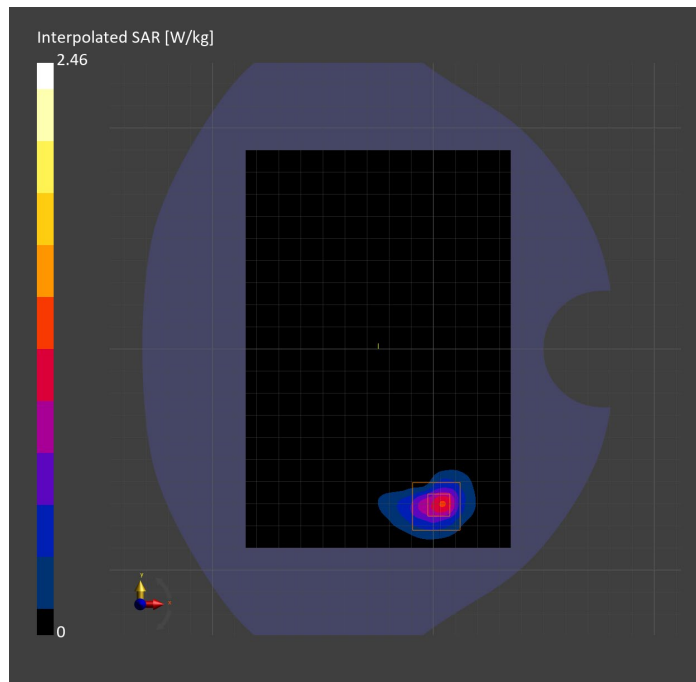
Probe Calibration Date	EX3DV4 - SN7335 2023-01-26	Phantom	Twin-SAM V8.0 (30deg probe tilt)
DAE Calibration Date	DAE4ip Sn1619 2023-04-18	TSL Type	HBBL-600-10000
Software Version	16.2.4.2524		

Scan Setup

	Area Scan	Zoom Scan
Grid Extents [mm]	120.0 x 180.0	30.0 x 30.0 x 28.0
Grid Steps [mm]	10.0 x 10.0	5.0 x 5.0 x 1.4
Sensor Surface [mm]	3.0	1.4
Graded Grid	N/A	Yes
M2/M1 [%]		73.2
Dist 3dB Peak [mm]		6.5

Measurement Results

	Area Scan	Zoom Scan
psSAR1g [W/Kg]	0.837	0.880
psSAR10g [W/Kg]	0.296	0.305
Power Drift [dB]	N/A	0.01



Measurement Report for Band 53: LTE-TDD (SC-FDMA, 1 RB, 10 MHz, QPSK, UL Subframe=2,3,4,7,8,9) RBPosition:Mid AntennaCfg:SISO, CHEEK

Exposure Conditions

Band	Band 53	TSL Permittivity	37.6
Frequency [MHz] Channel Number	2489.200 60197	TSL Conductivity [S/m]	1.84
Group UID	LTE-TDD 10470-AAG	Phantom Section TSL	RightHead HSL
Conversion Factor	7.33	Test Distance [mm]	0.00

Hardware Setup

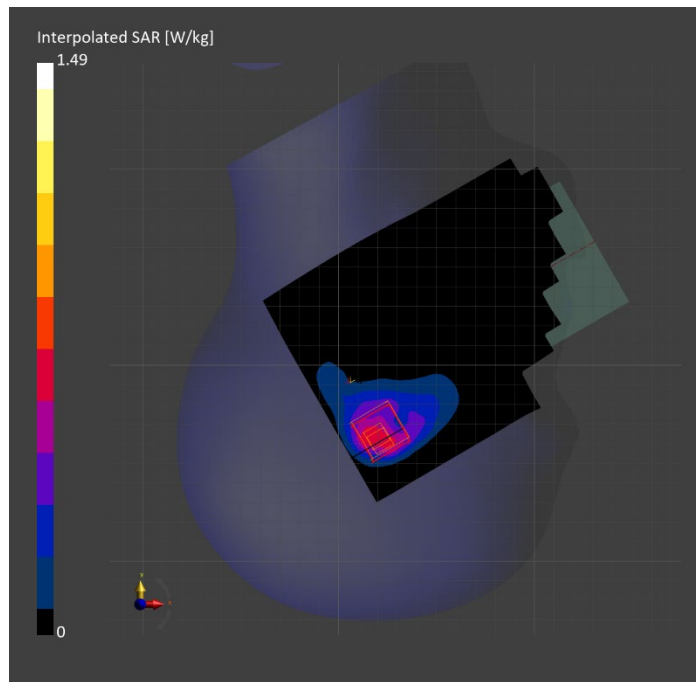
Probe Calibration Date	EX3DV4 - SN3772 2023-02-13	Phantom	Twin-SAM V8.0 (30deg probe tilt)
DAE Calibration Date	DAE4 Sn1359 2023-01-24	TSL Type	HBBL-600-10000
Software Version	16.2.4.2524		

Scan Setup

	Area Scan	Zoom Scan
Grid Extents [mm]	120.0 x 180.0	30.0 x 30.0 x 30.0
Grid Steps [mm]	10.0 x 10.0	5.0 x 5.0 x 1.5
Sensor Surface [mm]	3.0	1.4
Graded Grid	N/A	Yes
M2/M1 [%]		76.0
Dist 3dB Peak [mm]		6.4

Measurement Results

	Area Scan	Zoom Scan
psSAR1g [W/Kg]	0.547	0.622
psSAR10g [W/Kg]	0.277	0.269
Power Drift [dB]	N/A	-0.06



Measurement Report for Band 53: LTE-TDD (SC-FDMA, 1 RB, 10 MHz, QPSK, UL Subframe=2,3,4,7,8,9) RBPosition:Mid AntennaCfg:SISO, BACK

Exposure Conditions

Band	Band 53	TSL Permittivity	37.6
Frequency [MHz] Channel Number	2489.200 60197	TSL Conductivity [S/m]	1.84
Group UID	LTE-TDD 10470-AAG	Phantom Section TSL	Flat HSL
Conversion Factor	7.33	Test Distance [mm]	5.00

Hardware Setup

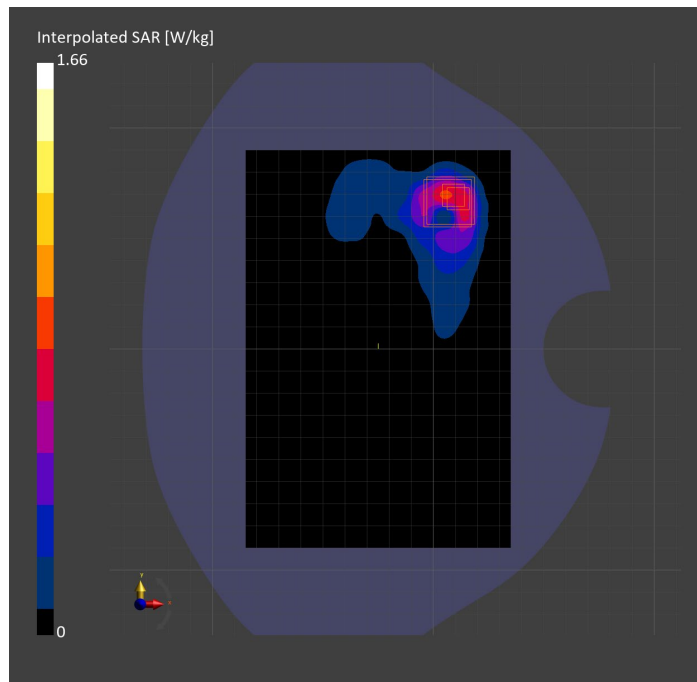
Probe Calibration Date	EX3DV4 - SN3772 2023-02-13	Phantom	Twin-SAM V8.0 (30deg probe tilt)
DAE Calibration Date	DAE4 Sn1359 2023-01-24	TSL Type	HBBL-600-10000
Software Version	16.2.4.2524		

Scan Setup

	Area Scan	Zoom Scan	Secondary Zoom Scan
Grid Extents [mm]	120.0 x 180.0	30.0 x 30.0 x 30.0	30.0 x 30.0 x 30.0
Grid Steps [mm]	10.0 x 10.0	5.0 x 5.0 x 1.5	5.0 x 5.0 x 1.5
Sensor Surface [mm]	3.0	1.4	1.4
Graded Grid	N/A	Yes	Yes
M2/M1 [%]		77.8	77.6
Dist 3dB Peak [mm]		5.0	5.0

Measurement Results

	Area Scan	Zoom Scan	Secondary Zoom Scan
psSAR1g [W/Kg]	0.625	0.675	0.673
psSAR10g [W/Kg]	0.292	0.273	0.272
Power Drift [dB]	N/A	-0.18	-0.39



Measurement Report for Band 53: LTE-TDD (SC-FDMA, 1 RB, 10 MHz, QPSK, UL Subframe=2,3,4,7,8,9) RBPosition:Mid AntennaCfg:SISO, EDGE LEFT

Exposure Conditions

Band	Band 53	TSL Permittivity	37.6
Frequency [MHz] Channel Number	2489.200 60197	TSL Conductivity [S/m]	1.84
Group UID	LTE-TDD 10470-AAG	Phantom Section TSL	Flat HSL
Conversion Factor	7.33	Test Distance [mm]	5.00

Hardware Setup

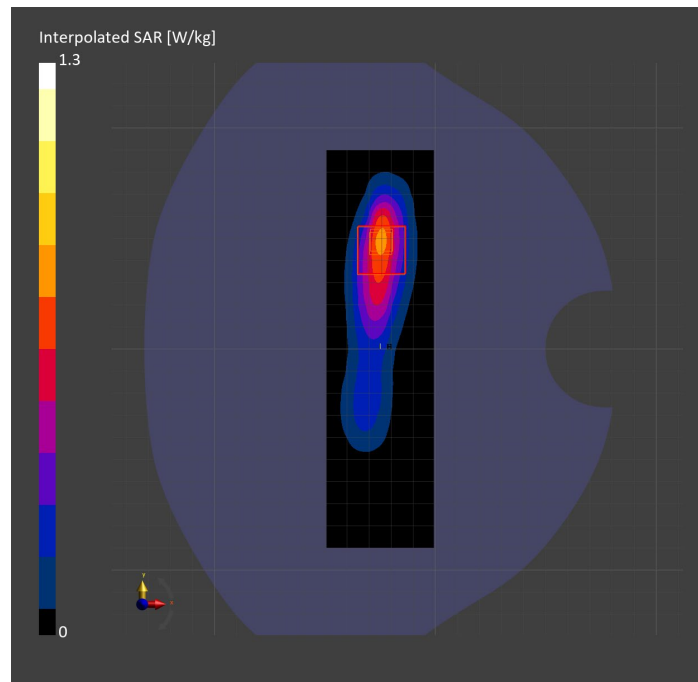
Probe Calibration Date	EX3DV4 - SN3772 2023-02-13	Phantom	Twin-SAM V8.0 (30deg probe tilt)
DAE Calibration Date	DAE4 Sn1359 2023-01-24	TSL Type	HBBL-600-10000
Software Version	16.2.4.2524		

Scan Setup

	Area Scan	Zoom Scan
Grid Extents [mm]	48.6 x 180.0	30.0 x 30.0 x 30.0
Grid Steps [mm]	8.1 x 10.0	5.0 x 5.0 x 1.5
Sensor Surface [mm]	3.0	1.4
Graded Grid	N/A	Yes
M2/M1 [%]		78.0
Dist 3dB Peak [mm]		7.3

Measurement Results

	Area Scan	Zoom Scan
psSAR1g [W/Kg]	0.601	0.594
psSAR10g [W/Kg]	0.279	0.272
Power Drift [dB]	N/A	0.03



Measurement Report for Band 66: LTE-FDD (SC-FDMA, 50% RB, 20 MHz, QPSK) RBPosition:Mid AntennaCfg:SISO, EDGE BOTTOM

Exposure Conditions

Band	Band 66	TSL Permittivity	41.8
Frequency [MHz] Channel Number	1770.000 132572	TSL Conductivity [S/m]	1.32
Group UID	LTE-FDD 10297-AAE	Phantom Section TSL	Flat HSL
Conversion Factor	8.98	Test Distance [mm]	5.00

Hardware Setup

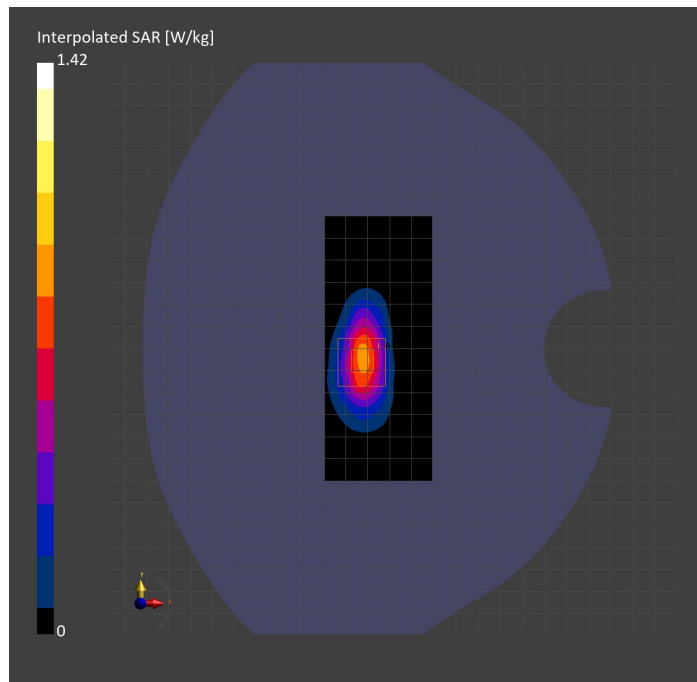
Probe Calibration Date	EX3DV4 - SN3989 2023-01-26	Phantom	Twin-SAM V8.0 (30deg probe tilt)
DAE Calibration Date	DAE4 Sn1257 2022-09-20	TSL Type	HBBL-600-10000
Software Version	16.2.4.2524		

Scan Setup

	Area Scan	Zoom Scan
Grid Extents [mm]	48.6 x 120.0	30.0 x 30.0 x 30.0
Grid Steps [mm]	8.1 x 15.0	6.0 x 6.0 x 1.5
Sensor Surface [mm]	3.0	1.4
Graded Grid	N/A	Yes
M2/M1 [%]		80.4
Dist 3dB Peak [mm]		7.3

Measurement Results

	Area Scan	Zoom Scan
psSAR1g [W/Kg]	0.704	0.719
psSAR10g [W/Kg]	0.343	0.349
Power Drift [dB]	N/A	0.01



Measurement Report for Band 66: LTE-FDD (SC-FDMA, 50% RB, 20 MHz, QPSK) RBPosition:Mid AntennaCfg:SISO, BACK

Exposure Conditions

Band	Band 66	TSL Permittivity	40.2
Frequency [MHz] Channel Number	1770.000 132572	TSL Conductivity [S/m]	1.32
Group UID	LTE-FDD 10297-AAE	Phantom Section TSL	Flat HSL
Conversion Factor	8.98	Test Distance [mm]	5.00

Hardware Setup

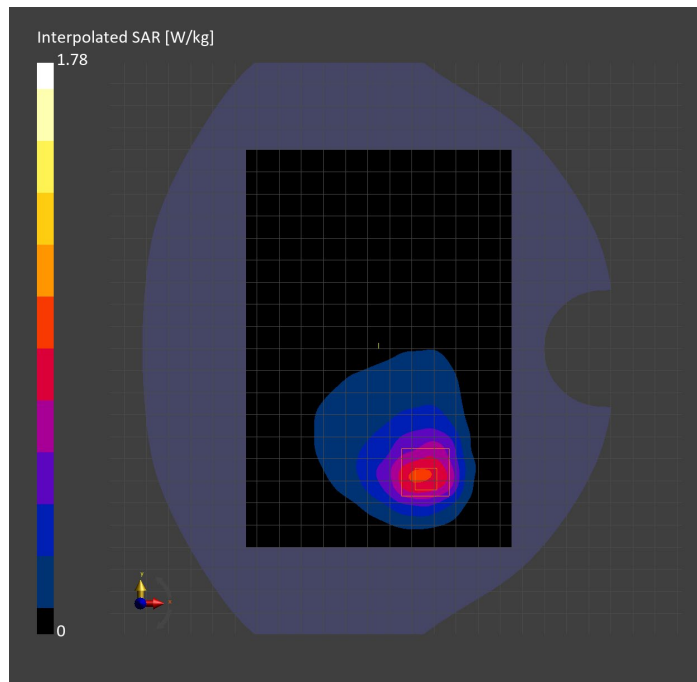
Probe Calibration Date	EX3DV4 - SN3989 2023-01-26	Phantom	Twin-SAM V8.0 (30deg probe tilt)
DAE Calibration Date	DAE4 Sn1257 2022-09-20	TSL Type	HBBL-600-10000
Software Version	16.2.4.2524		

Scan Setup

	Area Scan	Zoom Scan
Grid Extents [mm]	120.0 x 180.0	30.0 x 30.0 x 30.0
Grid Steps [mm]	15.0 x 15.0	6.0 x 6.0 x 1.5
Sensor Surface [mm]	3.0	1.4
Graded Grid	N/A	Yes
M2/M1 [%]		78.5
Dist 3dB Peak [mm]		11.9

Measurement Results

	Area Scan	Zoom Scan
psSAR1g [W/Kg]	0.771	0.843
psSAR10g [W/Kg]	0.436	0.432
Power Drift [dB]	N/A	-0.00



Measurement Report for Band 66: LTE-FDD (SC-FDMA, 1 RB, 20 MHz, QPSK) RBPosition:Mid AntennaCfg:SISO, CHEEK

Exposure Conditions

Band	Band 66	TSL Permittivity	41.0
Frequency [MHz] Channel Number	1745.000 132322	TSL Conductivity [S/m]	1.32
Group UID	LTE-FDD 10169-CAF	Phantom Section TSL	LeftHead HSL
Conversion Factor	8.66	Test Distance [mm]	0.00

Hardware Setup

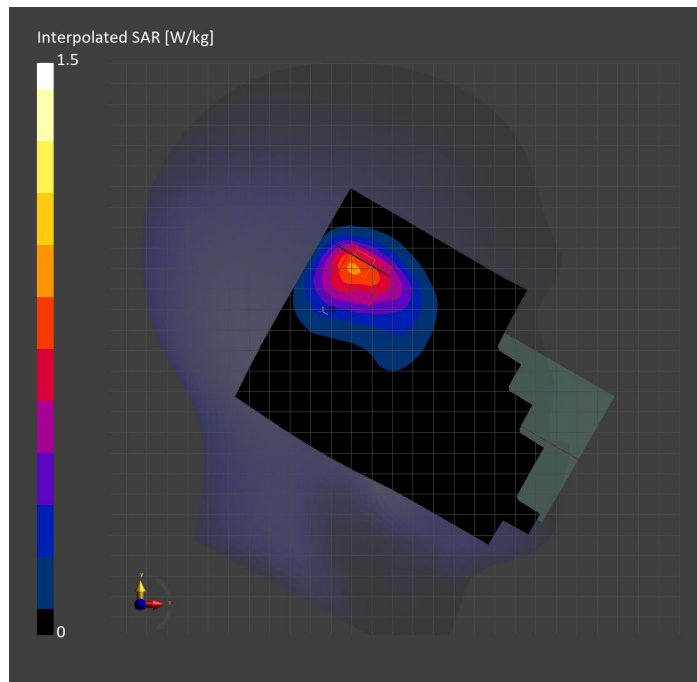
Probe Calibration Date	EX3DV4 - SN7569 2023-04-18	Phantom	Twin-SAM V8.0 (30deg probe tilt)
DAE Calibration Date	DAE4 Sn1547 2023-04-18	TSL Type	HBBL-600-10000
Software Version	16.2.4.2524		

Scan Setup

	Area Scan	Zoom Scan
Grid Extents [mm]	120.0 x 180.0	30.0 x 30.0 x 30.0
Grid Steps [mm]	15.0 x 15.0	6.0 x 6.0 x 1.5
Sensor Surface [mm]	3.0	1.4
Graded Grid	N/A	Yes
M2/M1 [%]		77.5
Dist 3dB Peak [mm]		8.1

Measurement Results

	Area Scan	Zoom Scan
psSAR1g [W/Kg]	0.721	0.724
psSAR10g [W/Kg]	0.415	0.405
Power Drift [dB]	N/A	-0.02



Measurement Report for Band 71: LTE-FDD (SC-FDMA, 1 RB, 20 MHz, QPSK) RBPosition:Mid AntennaCfg:SISO, EDGE RIGHT

Exposure Conditions

Band	Band 71	TSL Permittivity	41.6
Frequency [MHz] Channel Number	680.500 133297	TSL Conductivity [S/m]	0.809
Group UID	LTE-FDD 10169-CAF	Phantom Section TSL	Flat HSL
Conversion Factor	10.62	Test Distance [mm]	5.00

Hardware Setup

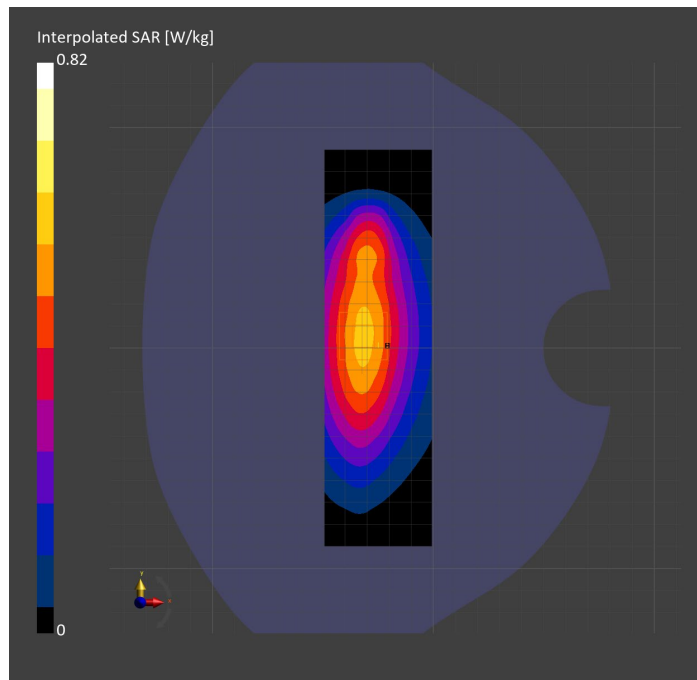
Probe Calibration Date	EX3DV4 - SN7589 2023-04-18	Phantom	Twin-SAM V5.0 (30deg probe tilt)
DAE Calibration Date	DAE4 Sn1544 2023-01-24	TSL Type	HBBL-600-10000
Software Version	16.2.4.2524		

Scan Setup

	Area Scan	Zoom Scan
Grid Extents [mm]	48.6 x 180.0	30.0 x 30.0 x 30.0
Grid Steps [mm]	8.1 x 15.0	6.0 x 6.0 x 1.5
Sensor Surface [mm]	3.0	1.4
Graded Grid	N/A	Yes
M2/M1 [%]		85.1
Dist 3dB Peak [mm]		> 15.0

Measurement Results

	Area Scan	Zoom Scan
psSAR1g [W/Kg]	0.501	0.510
psSAR10g [W/Kg]	0.339	0.343
Power Drift [dB]	N/A	-0.03



Measurement Report for Band 71: LTE-FDD (SC-FDMA, 1 RB, 20 MHz, QPSK) RBPosition:Mid AntennaCfg:SISO, CHEEK

Exposure Conditions

Band	Band 71	TSL Permittivity	41.7
Frequency [MHz] Channel Number	680.500 133297	TSL Conductivity [S/m]	0.849
Group UID	LTE-FDD 10169-CAF	Phantom Section TSL	RightHead HSL
Conversion Factor	8.93	Test Distance [mm]	0.00

Hardware Setup

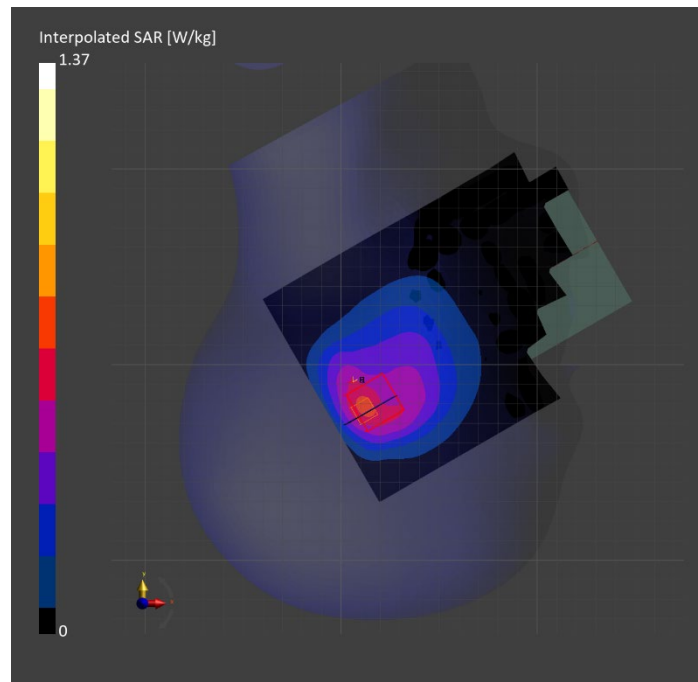
Probe Calibration Date	EX3DV4 - SN7448 2023-02-14	Phantom	Twin-SAM V5.0 (30deg probe tilt)
DAE Calibration Date	DAE4 Sn1472 2023-01-23	TSL Type	HBBL-600-10000
Software Version	16.2.4.2524		

Scan Setup

	Area Scan	Zoom Scan
Grid Extents [mm]	120.0 x 180.0	30.0 x 30.0 x 30.0
Grid Steps [mm]	15.0 x 15.0	6.0 x 6.0 x 1.5
Sensor Surface [mm]	3.0	1.4
Graded Grid	N/A	Yes
M2/M1 [%]		70.5
Dist 3dB Peak [mm]		7.7

Measurement Results

	Area Scan	Zoom Scan
psSAR1g [W/Kg]	0.614	0.558
psSAR10g [W/Kg]	0.398	0.338
Power Drift [dB]	N/A	0.04



Measurement Report for Band 71: LTE-FDD (SC-FDMA, 1 RB, 20 MHz, QPSK) RBPosition:Mid AntennaCfg:SISO, BACK

Exposure Conditions

Band	Band 71	TSL Permittivity	44.4
Frequency [MHz] Channel Number	680.500 133297	TSL Conductivity [S/m]	0.828
Group UID	LTE-FDD 10169-CAF	Phantom Section TSL	Flat HSL
Conversion Factor	10.62	Test Distance [mm]	5.00

Hardware Setup

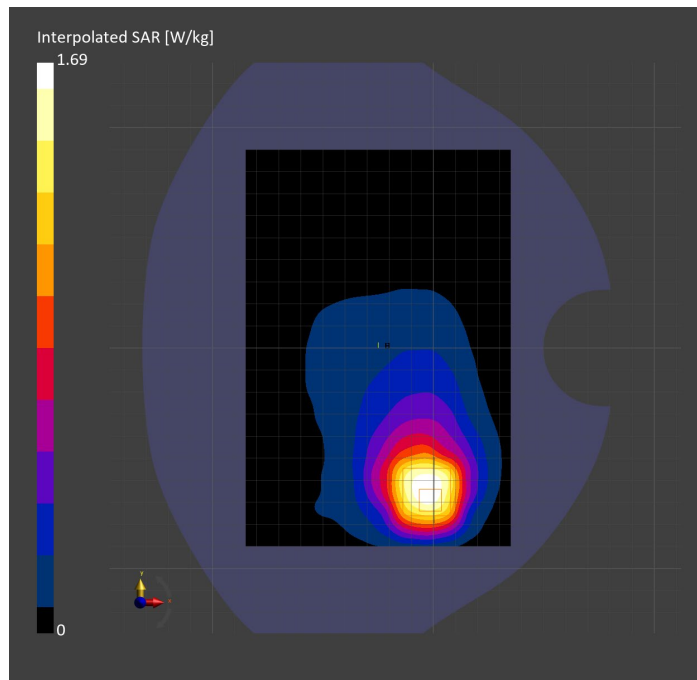
Probe Calibration Date	EX3DV4 - SN7589 2023-04-18	Phantom	Twin-SAM V5.0 (30deg probe tilt)
DAE Calibration Date	DAE4 Sn1544 2023-01-24	TSL Type	HBBL-600-10000
Software Version	16.2.4.2524		

Scan Setup

	Area Scan	Zoom Scan
Grid Extents [mm]	120.0 x 180.0	30.0 x 30.0 x 30.0
Grid Steps [mm]	15.0 x 15.0	6.0 x 6.0 x 1.5
Sensor Surface [mm]	3.0	1.4
Graded Grid	N/A	Yes
M2/M1 [%]		63.9
Dist 3dB Peak [mm]		8.7

Measurement Results

	Area Scan	Zoom Scan
psSAR1g [W/Kg]	0.547	0.586
psSAR10g [W/Kg]	0.353	0.290
Power Drift [dB]	N/A	0.01



Measurement Report for Band n5: 5G NR (DFT-s-OFDM, 1 RB, 20 MHz, QPSK, 15 kHz) RBPosition:Mid AntennaCfg:SISO, EDGE RIGHT

Exposure Conditions

Band	Band n5	TSL Permittivity	39.9
Frequency [MHz] Channel Number	836.500 167300	TSL Conductivity [S/m]	0.877
Group UID	5G NR FR1 FDD 10931-AAC	Phantom Section TSL	Flat HSL
Conversion Factor	8.76	Test Distance [mm]	5.00

Hardware Setup

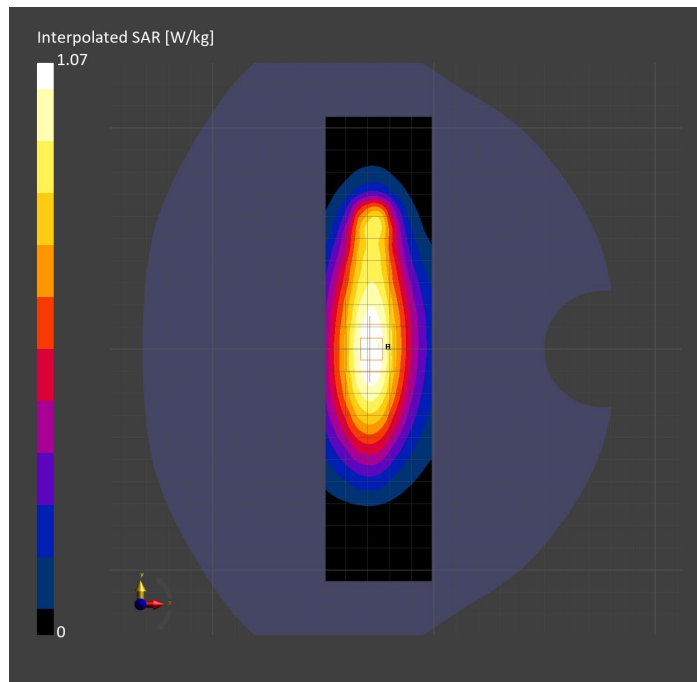
Probe Calibration Date	EX3DV4 - SN7806 2023-04-04	Phantom	Twin-SAM V8.0 (30deg probe tilt)
DAE Calibration Date	DAE4 Sn1784 2023-04-03	TSL Type	HBBL-600-10000
Software Version	16.2.4.2524		

Scan Setup

	Area Scan	Zoom Scan
Grid Extents [mm]	48.0 x 210.0	30.0 x 30.0 x 30.0
Grid Steps [mm]	8.0 x 15.0	6.0 x 6.0 x 1.5
Sensor Surface [mm]	3.0	1.4
Graded Grid	N/A	Yes
M2/M1 [%]		81.4
Dist 3dB Peak [mm]		15.2

Measurement Results

	Area Scan	Zoom Scan
psSAR1g [W/Kg]	0.602	0.621
psSAR10g [W/Kg]	0.393	0.403
Power Drift [dB]	N/A	-0.09



Measurement Report for Band n5: 5G NR (DFT-s-OFDM, 50% RB, 20 MHz, QPSK, 15 kHz) RBPosition:Mid AntennaCfg:SISO, CHEEK

Exposure Conditions

Band	Band n5	TSL Permittivity	40.1
Frequency [MHz] Channel Number	836.500 167300	TSL Conductivity [S/m]	0.867
Group UID	5G NR FR1 FDD 10939-AAC	Phantom Section TSL	RightHead HSL
Conversion Factor	7.83	Test Distance [mm]	0.00

Hardware Setup

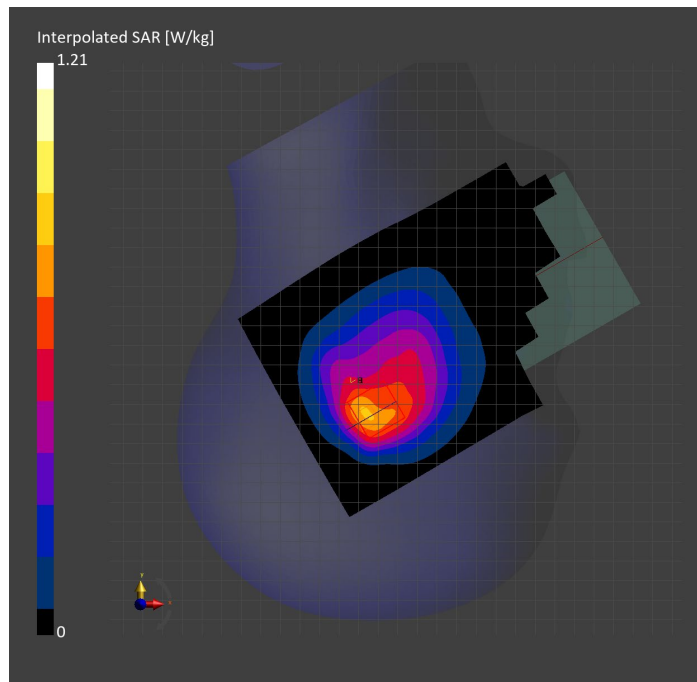
Probe Calibration Date	EX3DV4 - SN3749 2023-01-27	Phantom	Twin-SAM V8.0 (30deg probe tilt)
DAE Calibration Date	DAE4 Sn1357 2023-01-27	TSL Type	HBBL-600-10000
Software Version	16.2.4.2524		

Scan Setup

	Area Scan	Zoom Scan
Grid Extents [mm]	120.0 x 210.0	30.0 x 30.0 x 30.0
Grid Steps [mm]	15.0 x 15.0	6.0 x 6.0 x 1.5
Sensor Surface [mm]	3.0	1.4
Graded Grid	N/A	Yes
M2/M1 [%]		84.8
Dist 3dB Peak [mm]		8.8

Measurement Results

	Area Scan	Zoom Scan
psSAR1g [W/Kg]	0.690	0.672
psSAR10g [W/Kg]	0.449	0.433
Power Drift [dB]	N/A	0.01



Measurement Report for Band n5: 5G NR (DFT-s-OFDM, 50% RB, 20 MHz, QPSK, 15 kHz) RBPosition:Mid AntennaCfg:SISO, BACK

Exposure Conditions

Band	Band n5	TSL Permittivity	39.8
Frequency [MHz] Channel Number	836.500 167300	TSL Conductivity [S/m]	0.908
Group UID	5G NR FR1 FDD 10939-AAC	Phantom Section TSL	Flat HSL
Conversion Factor	7.83	Test Distance [mm]	5.00

Hardware Setup

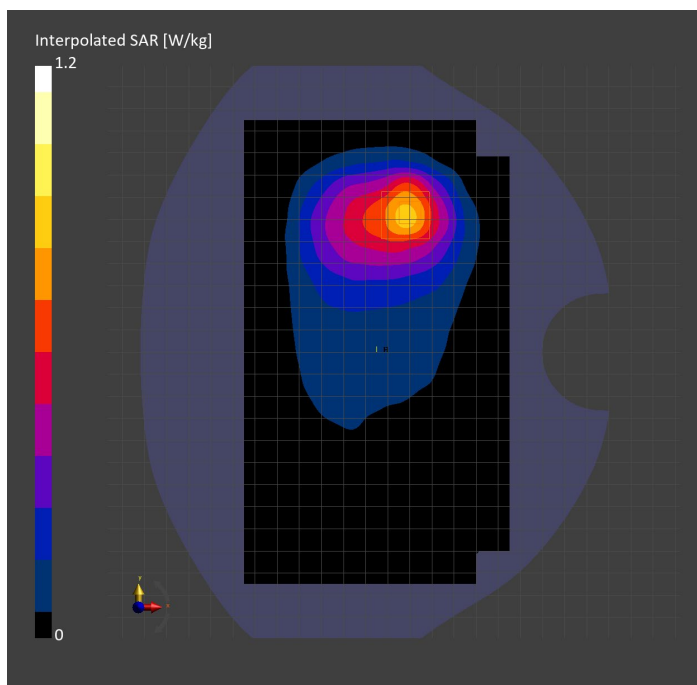
Probe Calibration Date	EX3DV4 - SN3749 2023-01-27	Phantom	Twin-SAM V8.0 (30deg probe tilt)
DAE Calibration Date	DAE4 Sn1357 2023-01-27	TSL Type	HBBL-600-10000
Software Version	16.2.4.2524		

Scan Setup

	Area Scan	Zoom Scan
Grid Extents [mm]	120.0 x 210.0	30.0 x 30.0 x 30.0
Grid Steps [mm]	15.0 x 15.0	6.0 x 6.0 x 1.5
Sensor Surface [mm]	3.0	1.4
Graded Grid	N/A	Yes
M2/M1 [%]		85.1
Dist 3dB Peak [mm]		14.7

Measurement Results

	Area Scan	Zoom Scan
psSAR1g [W/Kg]	0.726	0.700
psSAR10g [W/Kg]	0.464	0.412
Power Drift [dB]	N/A	-0.01



Measurement Report for Band n7: 5G NR (DFT-s-OFDM, 1 RB, 40 MHz, QPSK, 15 kHz) RBPosition:Mid AntennaCfg:SISO, BACK

Exposure Conditions

Band	Band n7	TSL Permittivity	37.5
Frequency [MHz] Channel Number	2535.000 507000	TSL Conductivity [S/m]	1.94
Group UID	5G NR FR1 FDD 10934-AAC	Phantom Section TSL	Flat HSL
Conversion Factor	7.32	Test Distance [mm]	5.00

Hardware Setup

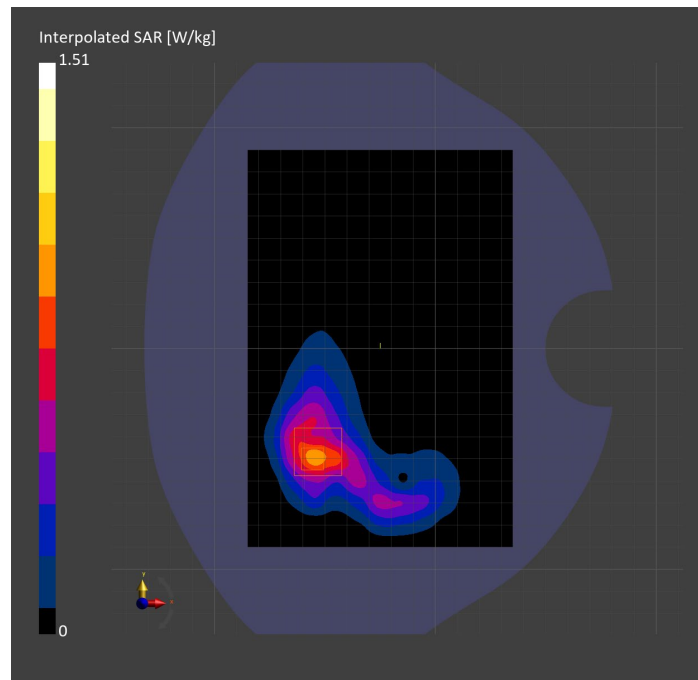
Probe Calibration Date	EX3DV4 - SN3885 2022-09-20	Phantom	Twin-SAM V5.0 (30deg probe tilt)
DAE Calibration Date	DAE4 Sn1548 2023-02-14	TSL Type	HBBL-600-10000
Software Version	16.2.4.2524		

Scan Setup

	Area Scan	Zoom Scan
Grid Extents [mm]	120.0 x 180.0	30.0 x 30.0 x 30.0
Grid Steps [mm]	10.0 x 10.0	5.0 x 5.0 x 1.5
Sensor Surface [mm]	3.0	1.4
Graded Grid	N/A	Yes
M2/M1 [%]		79.8
Dist 3dB Peak [mm]		8.7

Measurement Results

	Area Scan	Zoom Scan
psSAR1g [W/Kg]	0.730	0.750
psSAR10g [W/Kg]	0.363	0.374
Power Drift [dB]	N/A	0.02



Measurement Report for Band n7: 5G NR (DFT-s-OFDM, 1 RB, 40 MHz, QPSK, 15 kHz) RBPosition:Mid AntennaCfg:SISO, EDGE LEFT

Exposure Conditions

Band	Band n7	TSL Permittivity	37.4
Frequency [MHz] Channel Number	2535.000 507000	TSL Conductivity [S/m]	1.97
Group UID	5G NR FR1 FDD 10934-AAC	Phantom Section TSL	Flat HSL
Conversion Factor	7.32	Test Distance [mm]	5.00

Hardware Setup

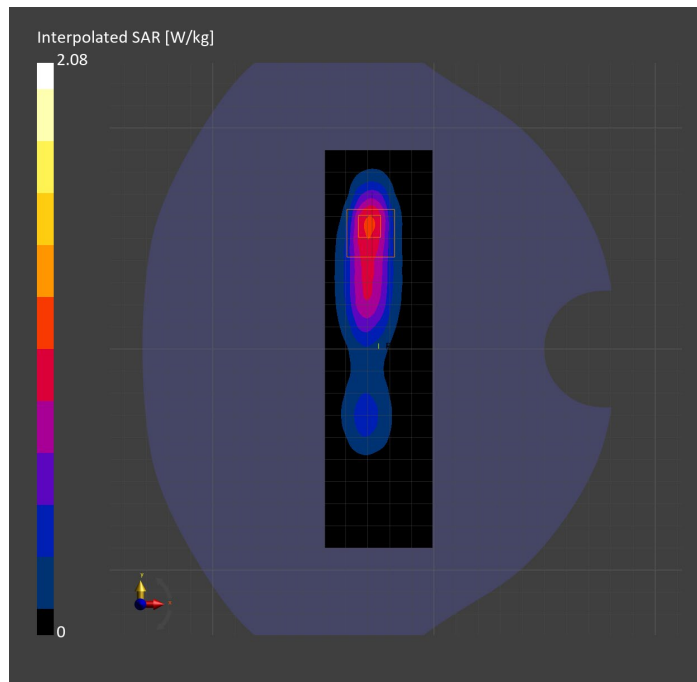
Probe Calibration Date	EX3DV4 - SN3885 2022-09-20	Phantom	Twin-SAM V5.0 (30deg probe tilt)
DAE Calibration Date	DAE4 Sn1548 2023-02-14	TSL Type	HBBL-600-10000
Software Version	16.2.4.2524		

Scan Setup

	Area Scan	Zoom Scan
Grid Extents [mm]	48.6 x 180.0	30.0 x 30.0 x 30.0
Grid Steps [mm]	8.1 x 10.0	5.0 x 5.0 x 1.5
Sensor Surface [mm]	3.0	1.4
Graded Grid	N/A	Yes
M2/M1 [%]		77.1
Dist 3dB Peak [mm]		6.8

Measurement Results

	Area Scan	Zoom Scan
psSAR1g [W/Kg]	0.830	0.872
psSAR10g [W/Kg]	0.385	0.375
Power Drift [dB]	N/A	-0.01



Measurement Report for Band n7: 5G NR (DFT-s-OFDM, 50% RB, 40 MHz, QPSK, 15 kHz) RBPosition:Mid AntennaCfg:SISO, CHEEK

Exposure Conditions

Band	Band n7	TSL Permittivity	38.0
Frequency [MHz] Channel Number	2535.000 507000	TSL Conductivity [S/m]	1.96
Group UID	5G NR FR1 FDD 10942-AAC	Phantom Section TSL	LeftHead HSL
Conversion Factor	7.32	Test Distance [mm]	0.00

Hardware Setup

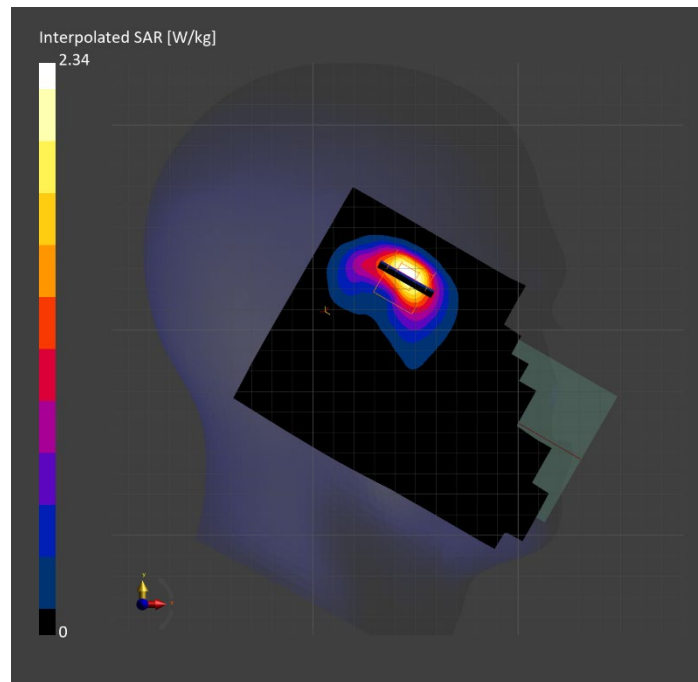
Probe Calibration Date	EX3DV4 - SN3885 2022-09-20	Phantom	Twin-SAM V5.0 (30deg probe tilt)
DAE Calibration Date	DAE4 Sn1548 2023-02-14	TSL Type	HBBL-600-10000
Software Version	16.2.4.2524		

Scan Setup

	Area Scan	Zoom Scan
Grid Extents [mm]	120.0 x 180.0	30.0 x 30.0 x 30.0
Grid Steps [mm]	10.0 x 10.0	5.0 x 5.0 x 1.5
Sensor Surface [mm]	3.0	1.4
Graded Grid	N/A	Yes
M2/M1 [%]		73.0
Dist 3dB Peak [mm]		6.2

Measurement Results

	Area Scan	Zoom Scan
psSAR1g [W/Kg]	0.778	0.857
psSAR10g [W/Kg]	0.361	0.349
Power Drift [dB]	N/A	0.07



Measurement Report for Band n12: 5G NR (DFT-s-OFDM, 50% RB, 15 MHz, QPSK, 15 kHz) RBPosition:Mid AntennaCfg:SISO, EDGE RIGHT

Exposure Conditions

Band	Band n12	TSL Permittivity	43.4
Frequency [MHz] Channel Number	707.500 141500	TSL Conductivity [S/m]	0.861
Group UID	5G NR FR1 FDD 10938-AAC	Phantom Section TSL	Flat HSL
Conversion Factor	10.62	Test Distance [mm]	5.00

Hardware Setup

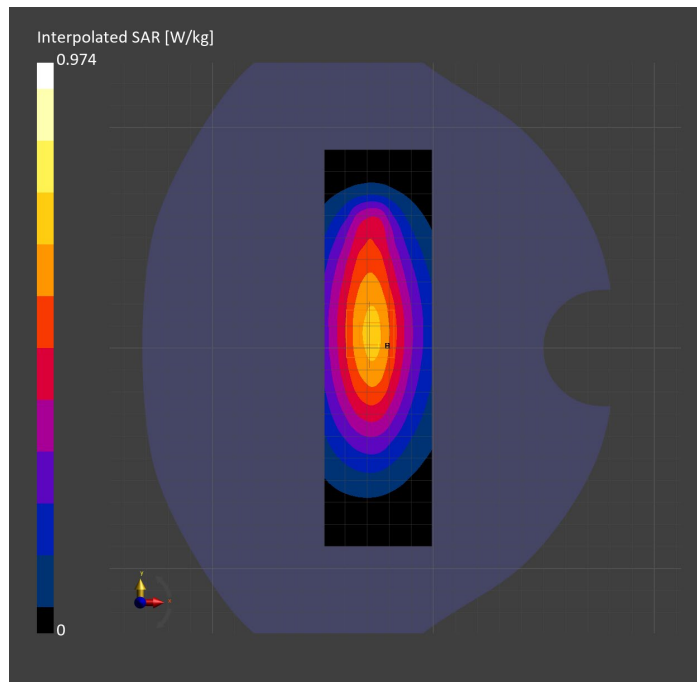
Probe Calibration Date	EX3DV4 - SN7589 2023-04-18	Phantom	Twin-SAM V5.0 (30deg probe tilt)
DAE Calibration Date	DAE4 Sn1544 2023-01-24	TSL Type	HBBL-600-10000
Software Version	16.2.4.2524		

Scan Setup

	Area Scan	Zoom Scan
Grid Extents [mm]	48.6 x 180.0	30.0 x 30.0 x 30.0
Grid Steps [mm]	8.1 x 15.0	6.0 x 6.0 x 1.5
Sensor Surface [mm]	3.0	1.4
Graded Grid	N/A	Yes
M2/M1 [%]		84.2
Dist 3dB Peak [mm]		> 15.0

Measurement Results

	Area Scan	Zoom Scan
psSAR1g [W/Kg]	0.591	0.602
psSAR10g [W/Kg]	0.397	0.400
Power Drift [dB]	N/A	-0.01



Measurement Report for Band n12: 5G NR (DFT-s-OFDM, 1 RB, 15 MHz, QPSK, 15 kHz) RBPosition:Mid AntennaCfg:SISO, CHEEK

Exposure Conditions

Band	Band n12	TSL Permittivity	41.7
Frequency [MHz] Channel Number	707.500 141500	TSL Conductivity [S/m]	0.858
Group UID	5G NR FR1 FDD 10930-AAC	Phantom Section TSL	RightHead HSL
Conversion Factor	8.93	Test Distance [mm]	0.00

Hardware Setup

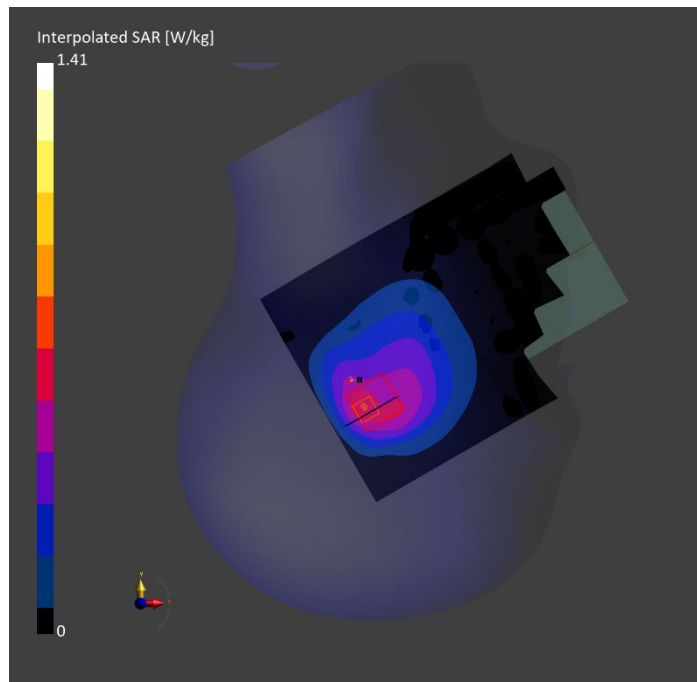
Probe Calibration Date	EX3DV4 - SN7448 2023-02-14	Phantom	Twin-SAM V5.0 (30deg probe tilt)
DAE Calibration Date	DAE4 Sn1472 2023-01-23	TSL Type	HBBL-600-10000
Software Version	16.2.4.2524		

Scan Setup

	Area Scan	Zoom Scan
Grid Extents [mm]	120.0 x 180.0	30.0 x 30.0 x 30.0
Grid Steps [mm]	15.0 x 15.0	6.0 x 6.0 x 1.5
Sensor Surface [mm]	3.0	1.4
Graded Grid	N/A	Yes
M2/M1 [%]		70.0
Dist 3dB Peak [mm]		6.5

Measurement Results

	Area Scan	Zoom Scan
psSAR1g [W/Kg]	0.592	0.573
psSAR10g [W/Kg]	0.389	0.348
Power Drift [dB]	N/A	-0.02



Measurement Report for Band n12: 5G NR (DFT-s-OFDM, 50% RB, 15 MHz, QPSK, 15 kHz) RBPosition:Mid AntennaCfg:SISO, BACK

Exposure Conditions

Band	Band n12	TSL Permittivity	43.4
Frequency [MHz] Channel Number	707.500 141500	TSL Conductivity [S/m]	0.861
Group UID	5G NR FR1 FDD 10938-AAC	Phantom Section TSL	Flat HSL
Conversion Factor	10.62	Test Distance [mm]	5.00

Hardware Setup

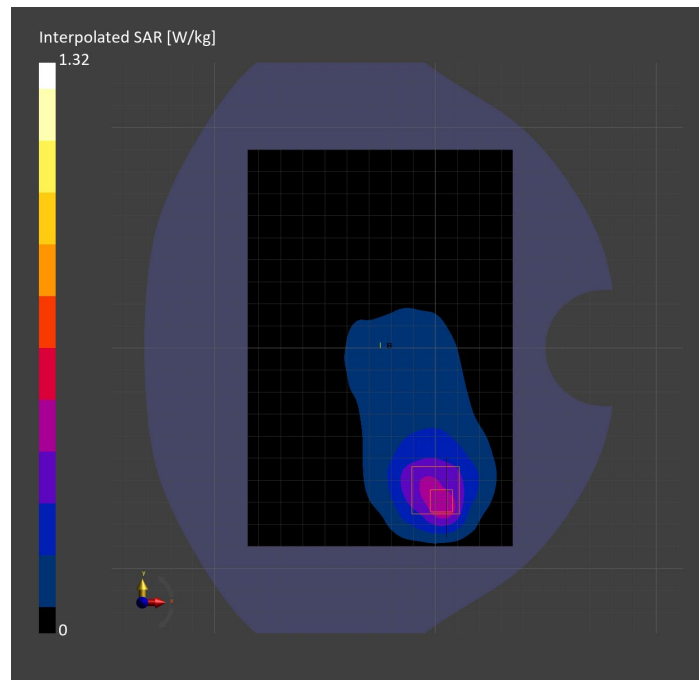
Probe Calibration Date	EX3DV4 - SN7589 2023-04-18	Phantom	Twin-SAM V5.0 (30deg probe tilt)
DAE Calibration Date	DAE4 Sn1544 2023-01-24	TSL Type	HBBL-600-10000
Software Version	16.2.4.2524		

Scan Setup

	Area Scan	Zoom Scan
Grid Extents [mm]	120.0 x 180.0	30.0 x 30.0 x 30.0
Grid Steps [mm]	15.0 x 15.0	6.0 x 6.0 x 1.5
Sensor Surface [mm]	3.0	1.4
Graded Grid	N/A	Yes
M2/M1 [%]		65.0
Dist 3dB Peak [mm]		9.2

Measurement Results

	Area Scan	Zoom Scan
psSAR1g [W/Kg]	0.440	0.488
psSAR10g [W/Kg]	0.283	0.255
Power Drift [dB]	N/A	-0.02



Measurement Report for Band n14: 5G NR (DFT-s-OFDM, 1 RB, 10 MHz, QPSK, 15 kHz) RBPosition:Mid AntennaCfg:SISO, EDGE RIGHT

Exposure Conditions

Band	Band n14	TSL Permittivity	43.1
Frequency [MHz] Channel Number	793.000 158600	TSL Conductivity [S/m]	0.891
Group UID	5G NR FR1 FDD 10929-AAD	Phantom Section TSL	Flat HSL
Conversion Factor	10.62	Test Distance [mm]	5.00

Hardware Setup

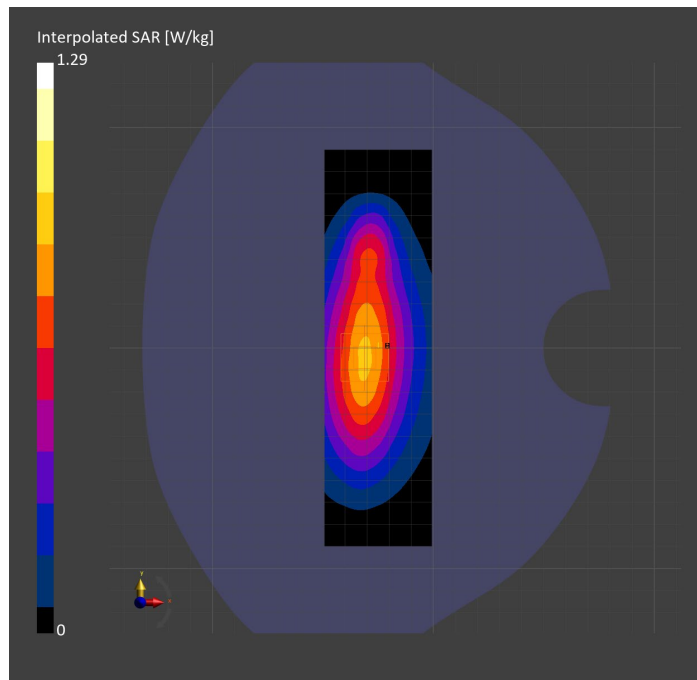
Probe Calibration Date	EX3DV4 - SN7589 2023-04-18	Phantom	Twin-SAM V5.0 (30deg probe tilt)
DAE Calibration Date	DAE4 Sn1544 2023-01-24	TSL Type	HBBL-600-10000
Software Version	16.2.4.2524		

Scan Setup

	Area Scan	Zoom Scan
Grid Extents [mm]	48.6 x 180.0	30.0 x 30.0 x 30.0
Grid Steps [mm]	8.1 x 15.0	6.0 x 6.0 x 1.5
Sensor Surface [mm]	3.0	1.4
Graded Grid	N/A	Yes
M2/M1 [%]		83.9
Dist 3dB Peak [mm]		16.1

Measurement Results

	Area Scan	Zoom Scan
psSAR1g [W/Kg]	0.766	0.781
psSAR10g [W/Kg]	0.505	0.510
Power Drift [dB]	N/A	0.03



Measurement Report for Band n14: 5G NR (DFT-s-OFDM, 1 RB, 10 MHz, QPSK, 15 kHz) RBPosition:Mid AntennaCfg:SISO, CHEEK

Exposure Conditions

Band	Band n14	TSL Permittivity	43.1
Frequency [MHz] Channel Number	793.000 158600	TSL Conductivity [S/m]	0.892
Group UID	5G NR FR1 FDD 10929-AAD	Phantom Section TSL	RightHead HSL
Conversion Factor	8.93	Test Distance [mm]	0.00

Hardware Setup

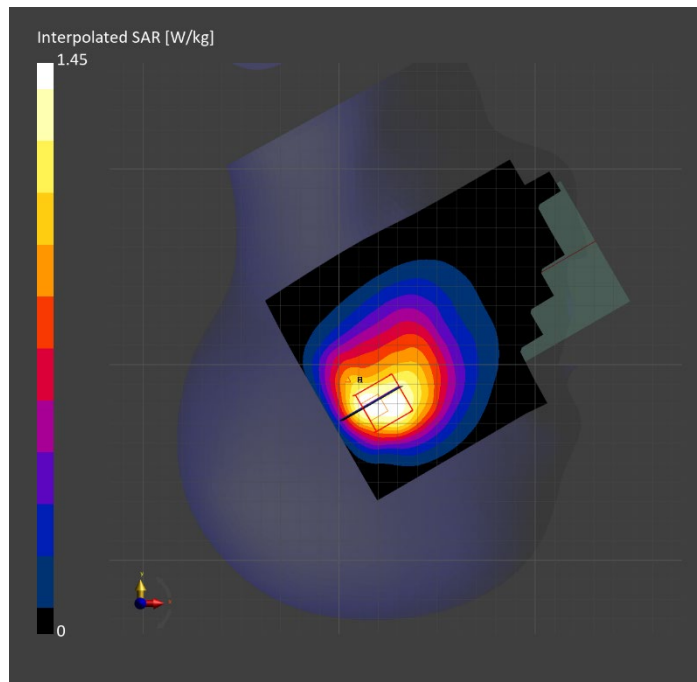
Probe Calibration Date	EX3DV4 - SN7448 2023-02-14	Phantom	Twin-SAM V5.0 (30deg probe tilt)
DAE Calibration Date	DAE4 Sn1472 2023-01-23	TSL Type	HBBL-600-10000
Software Version	16.2.4.2524		

Scan Setup

	Area Scan	Zoom Scan
Grid Extents [mm]	120.0 x 180.0	30.0 x 30.0 x 30.0
Grid Steps [mm]	15.0 x 15.0	5.9 x 5.9 x 1.5
Sensor Surface [mm]	3.0	1.4
Graded Grid	N/A	Yes
M2/M1 [%]		81.5
Dist 3dB Peak [mm]		9.8

Measurement Results

	Area Scan	Zoom Scan
psSAR1g [W/Kg]	0.725	0.758
psSAR10g [W/Kg]	0.493	0.474
Power Drift [dB]	N/A	-0.09



Measurement Report for Band n14: 5G NR (DFT-s-OFDM, 50% RB, 10 MHz, QPSK, 15 kHz) RBPosition:Mid AntennaCfg:SISO, BACK

Exposure Conditions

Band	Band n14	TSL Permittivity	43.1
Frequency [MHz] Channel Number	793.000 158600	TSL Conductivity [S/m]	0.892
Group UID	5G NR FR1 FDD 10937-AAD	Phantom Section TSL	Flat HSL
Conversion Factor	8.93	Test Distance [mm]	5.00

Hardware Setup

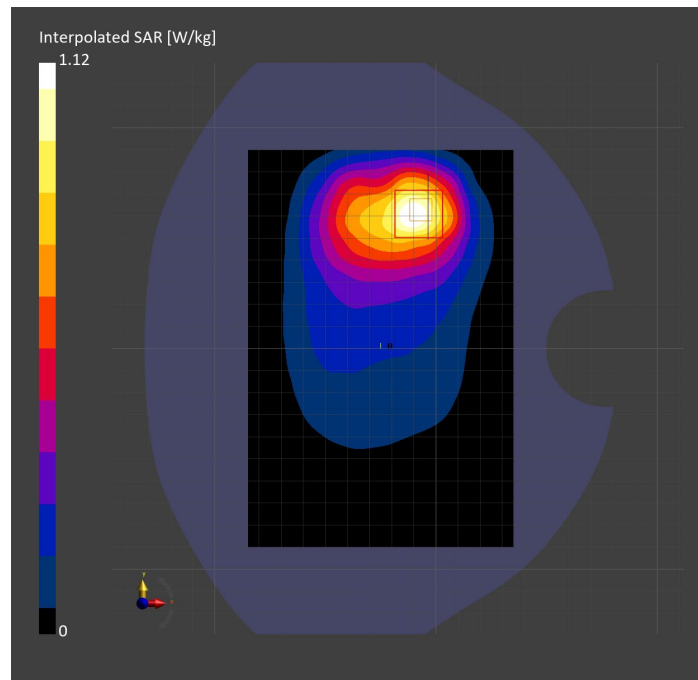
Probe Calibration Date	EX3DV4 - SN7448 2023-02-14	Phantom	Twin-SAM V5.0 (30deg probe tilt)
DAE Calibration Date	DAE4 Sn1472 2023-01-23	TSL Type	HBBL-600-10000
Software Version	16.2.4.2524		

Scan Setup

	Area Scan	Zoom Scan
Grid Extents [mm]	120.0 x 180.0	30.0 x 30.0 x 30.0
Grid Steps [mm]	15.0 x 15.0	6.0 x 6.0 x 1.5
Sensor Surface [mm]	3.0	1.4
Graded Grid	N/A	Yes
M2/M1 [%]		83.6
Dist 3dB Peak [mm]		13.5

Measurement Results

	Area Scan	Zoom Scan
psSAR1g [W/Kg]	0.625	0.614
psSAR10g [W/Kg]	0.401	0.351
Power Drift [dB]	N/A	-0.03



Measurement Report for Band n25: 5G NR (DFT-s-OFDM, 1 RB, 40 MHz, QPSK, 15 kHz) RBPosition:Mid AntennaCfg:SISO, EDGE TOP

Exposure Conditions

Band	Band n25	TSL Permittivity	39.5
Frequency [MHz] Channel Number	1882.500 376500	TSL Conductivity [S/m]	1.41
Group UID	5G NR FR1 FDD 10934-AAC	Phantom Section TSL	Flat HSL
Conversion Factor	7.53	Test Distance [mm]	5.00

Hardware Setup

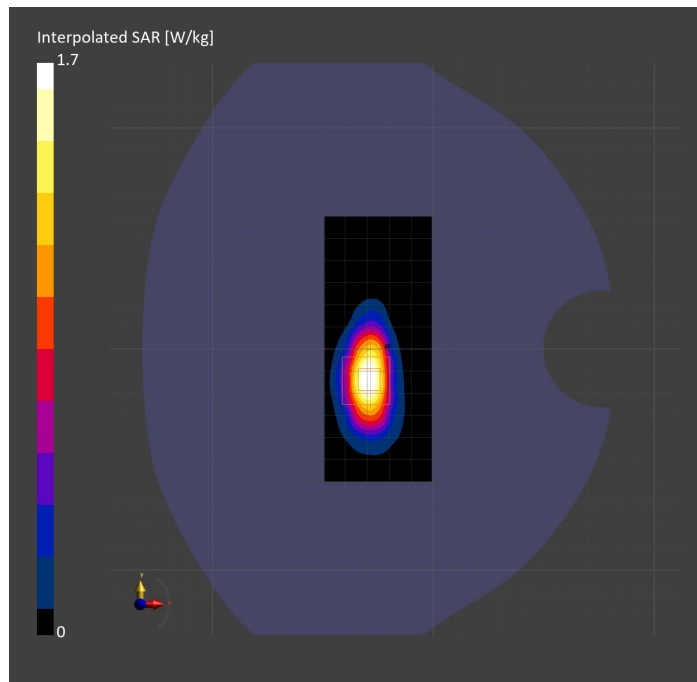
Probe Calibration Date	EX3DV4 - SN7807 2023-04-11	Phantom	Twin-SAM V8.0 (30deg probe tilt)
DAE Calibration Date	DAE4 Sn1799 2023-04-04	TSL Type	HBBL-600-10000
Software Version	16.2.4.2524		

Scan Setup

	Area Scan	Zoom Scan
Grid Extents [mm]	48.6 x 120.0	30.0 x 30.0 x 30.0
Grid Steps [mm]	8.1 x 15.0	6.0 x 6.0 x 1.5
Sensor Surface [mm]	3.0	1.4
Graded Grid	N/A	Yes
M2/M1 [%]		79.0
Dist 3dB Peak [mm]		7.3

Measurement Results

	Area Scan	Zoom Scan
psSAR1g [W/Kg]	0.813	0.828
psSAR10g [W/Kg]	0.390	0.382
Power Drift [dB]	N/A	0.04



Measurement Report for Band n25: 5G NR (DFT-s-OFDM, 1 RB, 40 MHz, QPSK, 15 kHz) RBPosition:Mid AntennaCfg:SISO, CHEEK

Exposure Conditions

Band	Band n25	TSL Permittivity	39.5
Frequency [MHz] Channel Number	1882.500 376500	TSL Conductivity [S/m]	1.41
Group UID	5G NR FR1 FDD 10934-AAC	Phantom Section TSL	LeftHead HSL
Conversion Factor	7.53	Test Distance [mm]	0.00

Hardware Setup

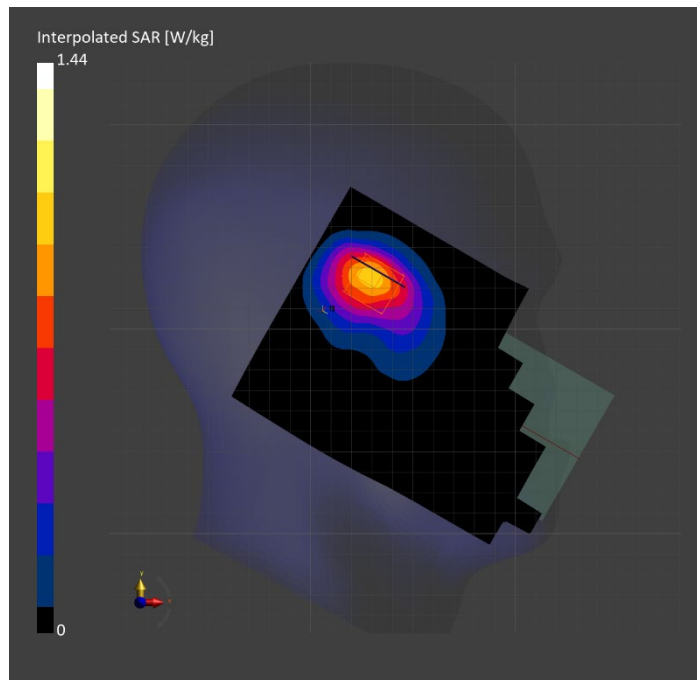
Probe Calibration Date	EX3DV4 - SN7807 2023-04-11	Phantom	Twin-SAM V8.0 (30deg probe tilt)
DAE Calibration Date	DAE4 Sn1799 2023-04-04	TSL Type	HBBL-600-10000
Software Version	16.2.4.2524		

Scan Setup

	Area Scan	Zoom Scan
Grid Extents [mm]	120.0 x 180.0	30.0 x 30.0 x 30.0
Grid Steps [mm]	15.0 x 15.0	6.0 x 6.0 x 1.5
Sensor Surface [mm]	3.0	1.4
Graded Grid	N/A	Yes
M2/M1 [%]		85.2
Dist 3dB Peak [mm]		9.7

Measurement Results

	Area Scan	Zoom Scan
psSAR1g [W/Kg]	0.839	0.806
psSAR10g [W/Kg]	0.471	0.462
Power Drift [dB]	N/A	-0.03



Measurement Report for Band n25: 5G NR (DFT-s-OFDM, 50% RB, 40 MHz, QPSK, 15 kHz) RBPosition:Mid AntennaCfg:SISO, BACK

Exposure Conditions

Band	Band n25	TSL Permittivity	39.8
Frequency [MHz] Channel Number	1882.500 376500	TSL Conductivity [S/m]	1.39
Group UID	5G NR FR1 FDD 10942-AAC	Phantom Section TSL	Flat HSL
Conversion Factor	8.43	Test Distance [mm]	5.00

Hardware Setup

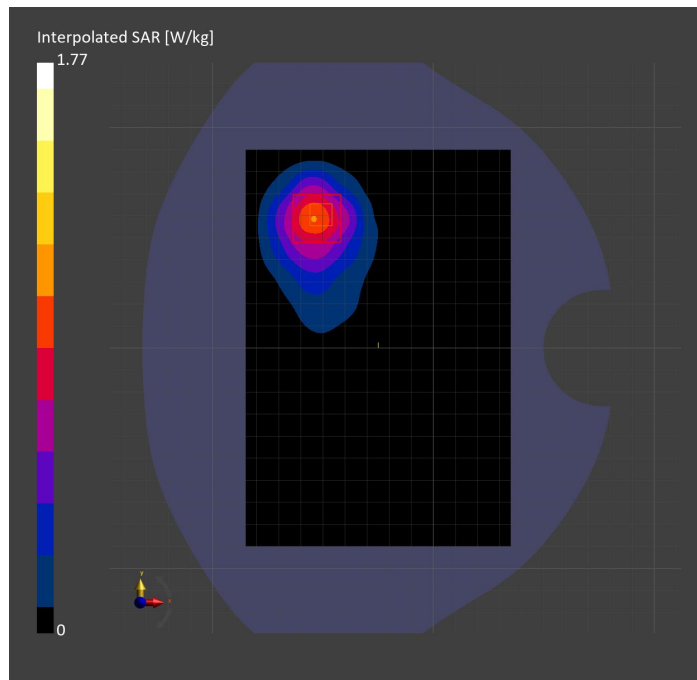
Probe Calibration Date	EX3DV4 - SN3991 2022-09-22	Phantom	Twin-SAM V8.0 (30deg probe tilt)
DAE Calibration Date	DAE4 Sn1674 2022-05-17	TSL Type	HBBL-600-10000
Software Version	16.2.4.2524		

Scan Setup

	Area Scan	Zoom Scan
Grid Extents [mm]	120.0 x 180.0	30.0 x 30.0 x 30.0
Grid Steps [mm]	15.0 x 15.0	6.0 x 6.0 x 1.5
Sensor Surface [mm]	3.0	1.4
Graded Grid	N/A	Yes
M2/M1 [%]		79.7
Dist 3dB Peak [mm]		10.8

Measurement Results

	Area Scan	Zoom Scan
psSAR1g [W/Kg]	0.843	0.854
psSAR10g [W/Kg]	0.464	0.443
Power Drift [dB]	N/A	-0.06



Measurement Report for Band n26: 5G NR (DFT-s-OFDM, 50% RB, 20 MHz, QPSK, 15 kHz) RBPosition:Mid AntennaCfg:SISO, EDGE RIGHT

Exposure Conditions

Band	Band n26	TSL Permittivity	40.1
Frequency [MHz] Channel Number	831.500 166300	TSL Conductivity [S/m]	0.865
Group UID	5G NR FR1 FDD 10939-AAC	Phantom Section TSL	Flat HSL
Conversion Factor	7.83	Test Distance [mm]	5.00

Hardware Setup

Probe Calibration Date	EX3DV4 - SN3749 2023-01-27	Phantom	Twin-SAM V8.0 (30deg probe tilt)
DAE Calibration Date	DAE4 Sn1357 2023-01-27	TSL Type	HBBL-600-10000
Software Version	16.2.4.2524		

Scan Setup

	Area Scan	Zoom Scan
Grid Extents [mm]	48.6 x 180.0	30.0 x 30.0 x 30.0
Grid Steps [mm]	8.1 x 15.0	6.0 x 6.0 x 1.5
Sensor Surface [mm]	3.0	1.4
Graded Grid	N/A	Yes
M2/M1 [%]		86.7
Dist 3dB Peak [mm]		14.4

Measurement Results

	Area Scan	Zoom Scan
psSAR1g [W/Kg]	0.515	0.531
psSAR10g [W/Kg]	0.334	0.341
Power Drift [dB]	N/A	-0.22

