

# System Performance Check Report for D2450V2 - SN706

## Exposure Conditions

Frequency [MHz]   Channel Number	2450.000   0	TSL Permittivity	38.0
Group   UID	CW   0--	TSL Conductivity [S/m]	1.82
Conversion Factor	7.33	Phantom Section   TSL	Flat   HSL

## Hardware Setup

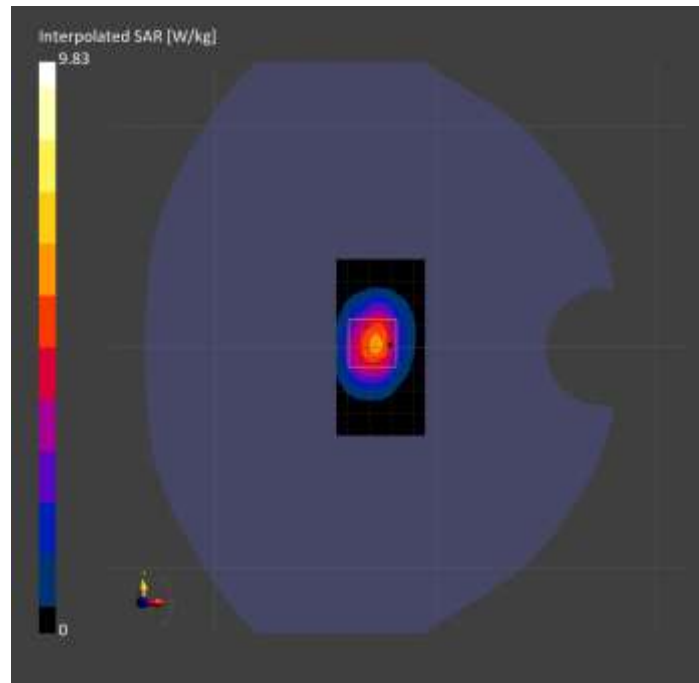
Probe   Calibration Date	EX3DV4 - SN3772   2023-02-13	Phantom	Twin-SAM V8.0 (30deg probe tilt)
DAE   Calibration Date	DAE4 Sn1359   2023-01-24	TSL Type	HBBL-600-10000
Software Version	16.2.4.2524		

## Scans Setup

	Area Scan	Zoom Scan
Grid Extents [mm]	40.0 x 80.0	30.0 x 30.0 x 30.0
Grid Steps [mm]	10.0 x 10.0	5.0 x 5.0 x 1.5
Sensor Surface [mm]	3.0	1.4
Graded Grid	N/A	Yes
M2/M1 [%]		81.3
Dist 3dB Peak [mm]		9.0

## Measurement Results

	Area Scan	Zoom Scan
psSAR1g [W/Kg]	4.74	<b>4.90</b>
psSAR10g [W/Kg]	2.28	<b>2.29</b>
Power Drift [dB]	N/A	0.07



# System Performance Check Report for D5GHzV2 - SN1138

## Exposure Conditions

Frequency [MHz]   Channel Number	5250.000   0	TSL Permittivity	37.1
Group   UID	CW   0--	TSL Conductivity [S/m]	4.85
Conversion Factor	5.14	Phantom Section   TSL	Flat   HSL

## Hardware Setup

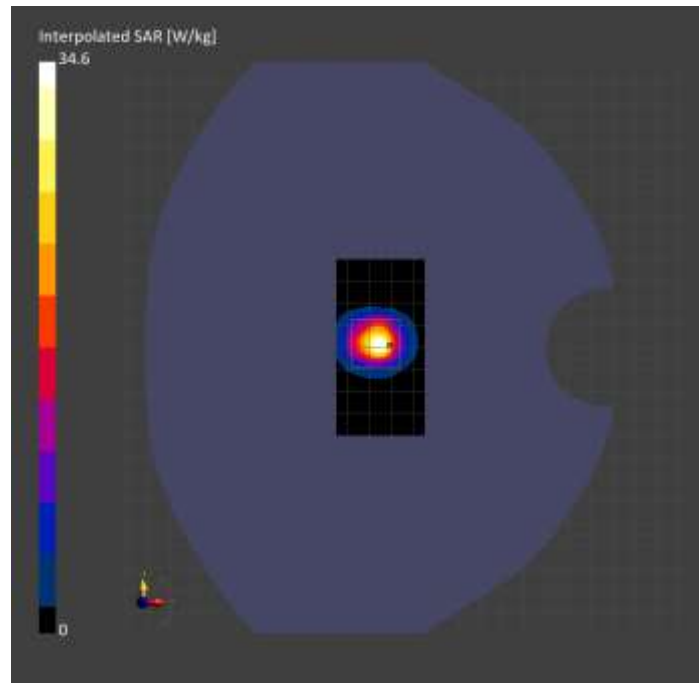
Probe   Calibration Date	EX3DV4 - SN3773   2023-02-13	Phantom	Twin-SAM V5.0 (30deg probe tilt)
DAE   Calibration Date	DAE4 Sn1258   2023-03-16	TSL Type	HBBL-600-10000
Software Version	16.2.4.2524		

## Scans Setup

	Area Scan	Zoom Scan
Grid Extents [mm]	40.0 x 80.0	22.0 x 22.0 x 22.0
Grid Steps [mm]	10.0 x 10.0	4.0 x 4.0 x 1.4
Sensor Surface [mm]	3.0	1.4
Graded Grid	N/A	Yes
M2/M1 [%]		62.9
Dist 3dB Peak [mm]		7.4

## Measurement Results

	Area Scan	Zoom Scan
psSAR1g [W/Kg]	7.37	8.60
psSAR10g [W/Kg]	2.25	2.47
Power Drift [dB]	N/A	0.18



# System Performance Check Report for D2450V2 - SN899

## Exposure Conditions

Frequency [MHz]   Channel Number	2450.000   0	TSL Permittivity	40.0
Group   UID	CW   0--	TSL Conductivity [S/m]	1.74
Conversion Factor	7.64	Phantom Section   TSL	Flat   HSL

## Hardware Setup

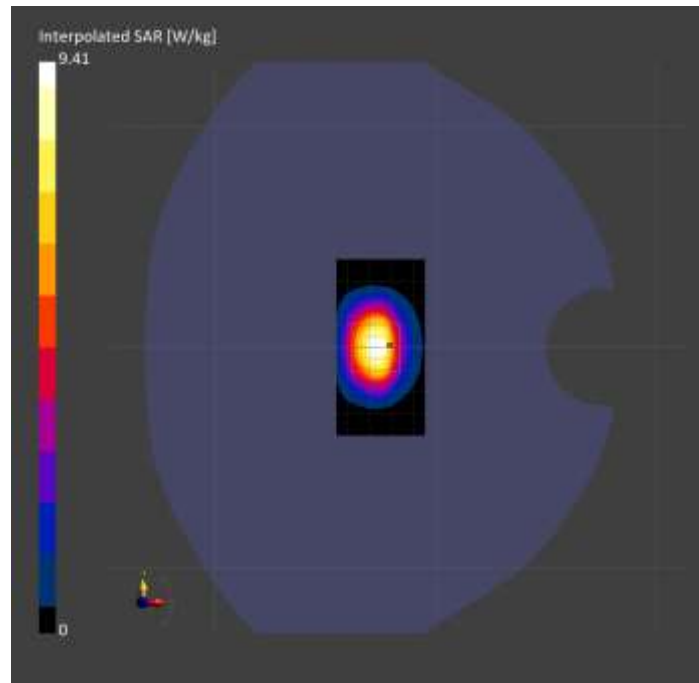
Probe   Calibration Date	EX3DV4 - SN7587   2023-04-18	Phantom	Twin-SAM V8.0 (30deg probe tilt)
DAE   Calibration Date	DAE4 Sn1239   2023-03-16	TSL Type	HBBL-600-10000
Software Version	16.2.4.2524		

## Scans Setup

	Area Scan	Zoom Scan
Grid Extents [mm]	40.0 x 80.0	30.0 x 30.0 x 30.0
Grid Steps [mm]	10.0 x 10.0	5.0 x 5.0 x 1.5
Sensor Surface [mm]	3.0	1.4
Graded Grid	N/A	Yes
M2/M1 [%]		82.0
Dist 3dB Peak [mm]		9.0

## Measurement Results

	Area Scan	Zoom Scan
psSAR1g [W/Kg]	4.82	<b>4.87</b>
psSAR10g [W/Kg]	2.28	<b>2.34</b>
Power Drift [dB]	N/A	0.00



# System Performance Check Report for D5GHzV2 - SN1003

## Exposure Conditions

Frequency [MHz]   Channel Number	5600.000   0	TSL Permittivity	34.1
Group   UID	CW   0--	TSL Conductivity [S/m]	4.84
Conversion Factor	4.75	Phantom Section   TSL	Flat   HSL

## Hardware Setup

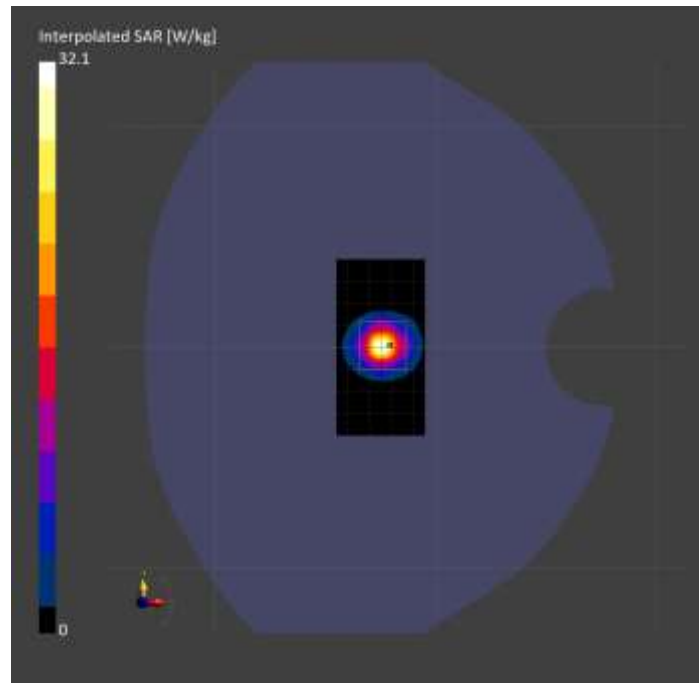
Probe   Calibration Date	EX3DV4 - SN3929   2023-04-26	Phantom	Twin-SAM V5.0 (30deg probe tilt)
DAE   Calibration Date	DAE4 Sn1675   2023-05-11	TSL Type	HBBL-600-10000
Software Version	16.2.4.2524		

## Scans Setup

	Area Scan	Zoom Scan
Grid Extents [mm]	40.0 x 80.0	22.0 x 22.0 x 22.0
Grid Steps [mm]	10.0 x 10.0	4.0 x 4.0 x 1.4
Sensor Surface [mm]	3.0	1.4
Graded Grid	N/A	Yes
M2/M1 [%]		62.0
Dist 3dB Peak [mm]		7.3

## Measurement Results

	Area Scan	Zoom Scan
psSAR1g [W/Kg]	7.34	7.64
psSAR10g [W/Kg]	2.06	2.14
Power Drift [dB]	N/A	0.02



# System Performance Check Report for D5GHzV2 - SN1003

## Exposure Conditions

Frequency [MHz]   Channel Number	5250.000   0	TSL Permittivity	35.5
Group   UID	CW   0--	TSL Conductivity [S/m]	4.58
Conversion Factor	5.59	Phantom Section   TSL	Flat   HSL

## Hardware Setup

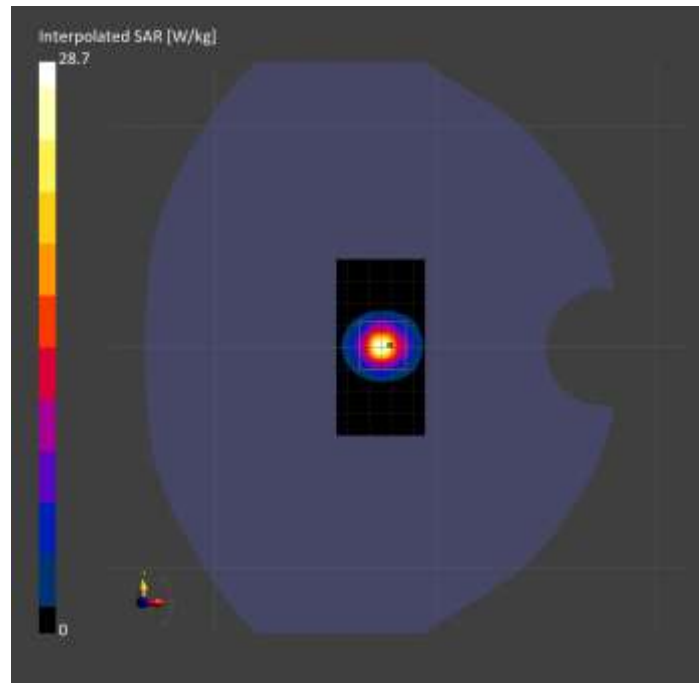
Probe   Calibration Date	EX3DV4 - SN3929   2023-04-26	Phantom	Twin-SAM V5.0 (30deg probe tilt)
DAE   Calibration Date	DAE4 Sn1675   2023-05-11	TSL Type	HBBL-600-10000
Software Version	16.2.4.2524		

## Scans Setup

	Area Scan	Zoom Scan
Grid Extents [mm]	40.0 x 80.0	22.0 x 22.0 x 22.0
Grid Steps [mm]	10.0 x 10.0	4.0 x 4.0 x 1.4
Sensor Surface [mm]	3.0	1.4
Graded Grid	N/A	Yes
M2/M1 [%]		64.4
Dist 3dB Peak [mm]		7.2

## Measurement Results

	Area Scan	Zoom Scan
psSAR1g [W/Kg]	6.82	7.26
psSAR10g [W/Kg]	1.94	2.07
Power Drift [dB]	N/A	0.00



# System Performance Check Report for D5GHzV2 - SN1138

## Exposure Conditions

Frequency [MHz]   Channel Number	5600.000   0	TSL Permittivity	34.8
Group   UID	CW   0--	TSL Conductivity [S/m]	4.87
Conversion Factor	4.46	Phantom Section   TSL	Flat   HSL

## Hardware Setup

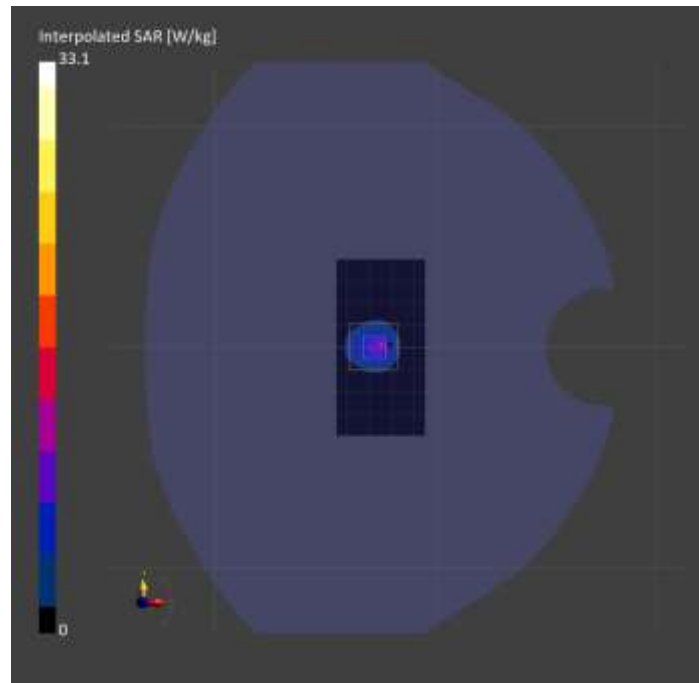
Probe   Calibration Date	EX3DV4 - SN7585   2023-04-18	Phantom	Twin-SAM V5.0 (30deg probe tilt)
DAE   Calibration Date	DAE4 Sn1434   2023-06-13	TSL Type	HBBL-600-10000
Software Version	16.2.4.2524		

## Scans Setup

	Area Scan	Zoom Scan
Grid Extents [mm]	40.0 x 80.0	22.0 x 22.0 x 22.0
Grid Steps [mm]	10.0 x 10.0	4.0 x 4.0 x 1.4
Sensor Surface [mm]	3.0	1.4
Graded Grid	N/A	Yes
M2/M1 [%]		61.7
Dist 3dB Peak [mm]		7.3

## Measurement Results

	Area Scan	Zoom Scan
psSAR1g [W/Kg]	7.02	7.91
psSAR10g [W/Kg]	2.07	2.24
Power Drift [dB]	N/A	-0.11



# System Performance Check Report for D2450V2 - SN899

## Exposure Conditions

Frequency [MHz]   Channel Number	2450.000   0	TSL Permittivity	38.4
Group   UID	CW   0--	TSL Conductivity [S/m]	1.77
Conversion Factor	6.97	Phantom Section   TSL	Flat   HSL

## Hardware Setup

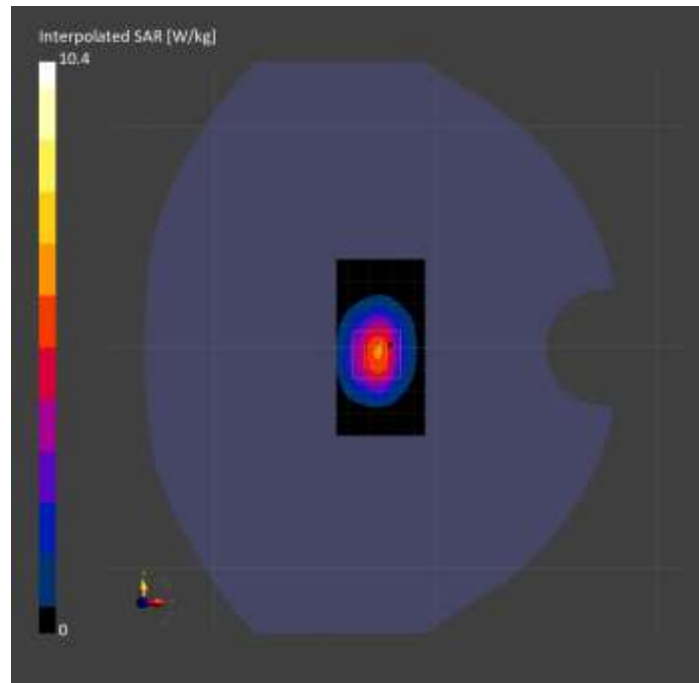
Probe   Calibration Date	EX3DV4 - SN7820   2023-07-11	Phantom	Twin-SAM V5.0 (30deg probe tilt)
DAE   Calibration Date	DAE4 Sn1434   2023-06-13	TSL Type	HBBL-600-10000
Software Version	16.2.4.2524		

## Scans Setup

	Area Scan	Zoom Scan
Grid Extents [mm]	40.0 x 80.0	30.0 x 30.0 x 30.0
Grid Steps [mm]	10.0 x 10.0	5.0 x 5.0 x 1.5
Sensor Surface [mm]	3.0	1.4
Graded Grid	N/A	Yes
M2/M1 [%]		79.0
Dist 3dB Peak [mm]		9.0

## Measurement Results

	Area Scan	Zoom Scan
psSAR1g [W/Kg]	4.85	5.01
psSAR10g [W/Kg]	2.29	2.33
Power Drift [dB]	N/A	-0.02



# System Performance Check Report for D5GHzV2 - SN1138

## Exposure Conditions

Frequency [MHz]   Channel Number	5600.000   0	TSL Permittivity	35.5
Group   UID	CW   0--	TSL Conductivity [S/m]	4.82
Conversion Factor	4.98	Phantom Section   TSL	Flat   HSL

## Hardware Setup

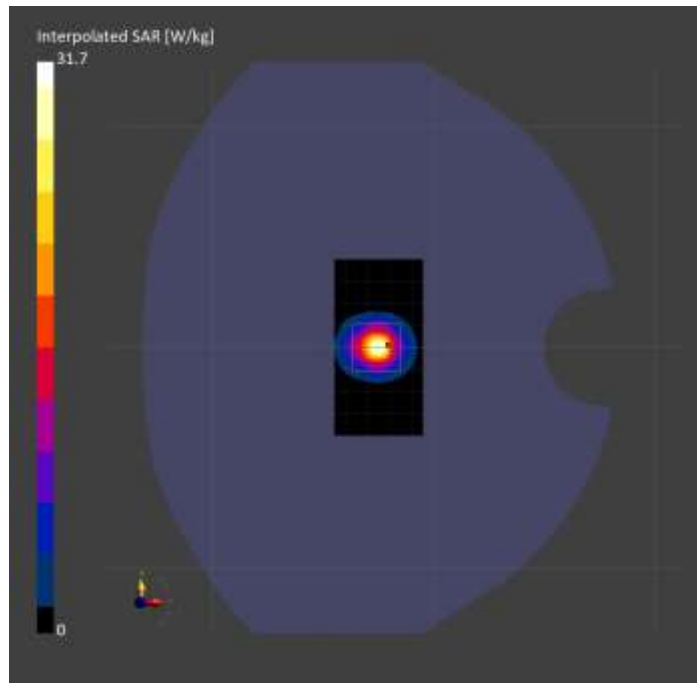
Probe   Calibration Date	EX3DV4 - SN3902   2023-03-17	Phantom	Twin-SAM V5.0 (30deg probe tilt)
DAE   Calibration Date	DAE4 Sn1797   2023-04-03	TSL Type	HBBL-600-10000
Software Version	16.2.4.2524		

## Scans Setup

	Area Scan	Zoom Scan
Grid Extents [mm]	40.0 x 80.0	22.0 x 22.0 x 22.0
Grid Steps [mm]	10.0 x 10.0	4.0 x 4.0 x 1.4
Sensor Surface [mm]	3.0	1.4
Graded Grid	N/A	Yes
M2/M1 [%]		62.1
Dist 3dB Peak [mm]		7.2

## Measurement Results

	Area Scan	Zoom Scan
psSAR1g [W/Kg]	6.92	7.50
psSAR10g [W/Kg]	1.96	2.12
Power Drift [dB]	N/A	0.03





# System Performance Check Report for D5GHzV2 - SN1138

## Exposure Conditions

Frequency [MHz]   Channel Number	5750.000   0	TSL Permittivity	35.2
Group   UID	CW   0--	TSL Conductivity [S/m]	4.98
Conversion Factor	5.15	Phantom Section   TSL	Flat   HSL

## Hardware Setup

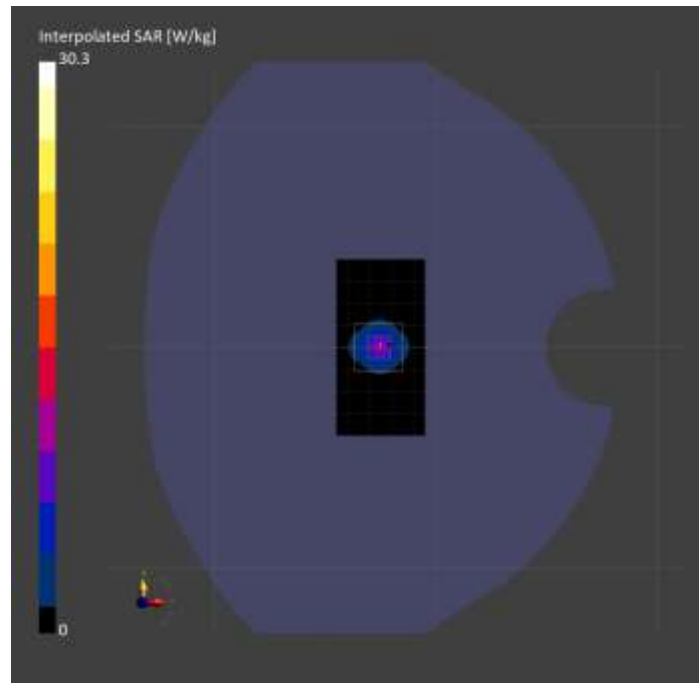
Probe   Calibration Date	EX3DV4 - SN3902   2023-03-17	Phantom	Twin-SAM V5.0 (30deg probe tilt)
DAE   Calibration Date	DAE4 Sn1797   2023-04-03	TSL Type	HBBL-600-10000
Software Version	16.2.4.2524		

## Scans Setup

	Area Scan	Zoom Scan
Grid Extents [mm]	40.0 x 80.0	22.0 x 22.0 x 22.0
Grid Steps [mm]	10.0 x 10.0	4.0 x 4.0 x 1.4
Sensor Surface [mm]	3.0	1.4
Graded Grid	N/A	Yes
M2/M1 [%]		61.6
Dist 3dB Peak [mm]		7.2

## Measurement Results

	Area Scan	Zoom Scan
psSAR1g [W/Kg]	6.75	7.09
psSAR10g [W/Kg]	1.92	2.02
Power Drift [dB]	N/A	0.07



# System Performance Check Report for D5GHzV2 - SN1003

## Exposure Conditions

Frequency [MHz]   Channel Number	5250.000   0	TSL Permittivity	37.6
Group   UID	CW   0--	TSL Conductivity [S/m]	4.53
Conversion Factor	5.61	Phantom Section   TSL	Flat   HSL

## Hardware Setup

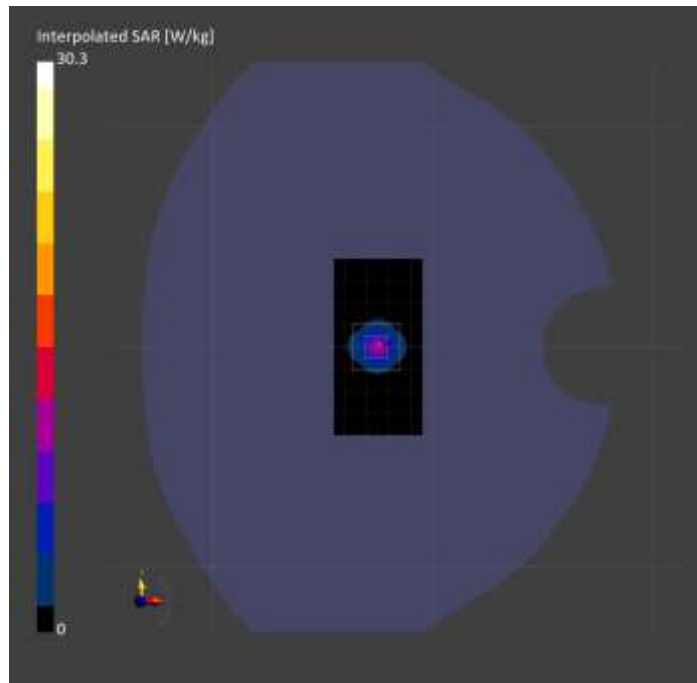
Probe   Calibration Date	EX3DV4 - SN3902   2023-03-17	Phantom	Twin-SAM V5.0 (30deg probe tilt)
DAE   Calibration Date	DAE4 Sn1797   2023-04-03	TSL Type	HBBL-600-10000
Software Version	16.2.4.2524		

## Scans Setup

	Area Scan	Zoom Scan
Grid Extents [mm]	40.0 x 80.0	22.0 x 22.0 x 22.0
Grid Steps [mm]	10.0 x 10.0	4.0 x 4.0 x 1.4
Sensor Surface [mm]	3.0	1.4
Graded Grid	N/A	Yes
M2/M1 [%]		63.3
Dist 3dB Peak [mm]		6.9

## Measurement Results

	Area Scan	Zoom Scan
psSAR1g [W/Kg]	6.87	7.38
psSAR10g [W/Kg]	1.95	2.10
Power Drift [dB]	N/A	0.02



# System Performance Check Report for D5GHzV2 - SN1138

## Exposure Conditions

Frequency [MHz]   Channel Number	5750.000   0	TSL Permittivity	35.7
Group   UID	CW   0--	TSL Conductivity [S/m]	5.01
Conversion Factor	4.86	Phantom Section   TSL	Flat   HSL

## Hardware Setup

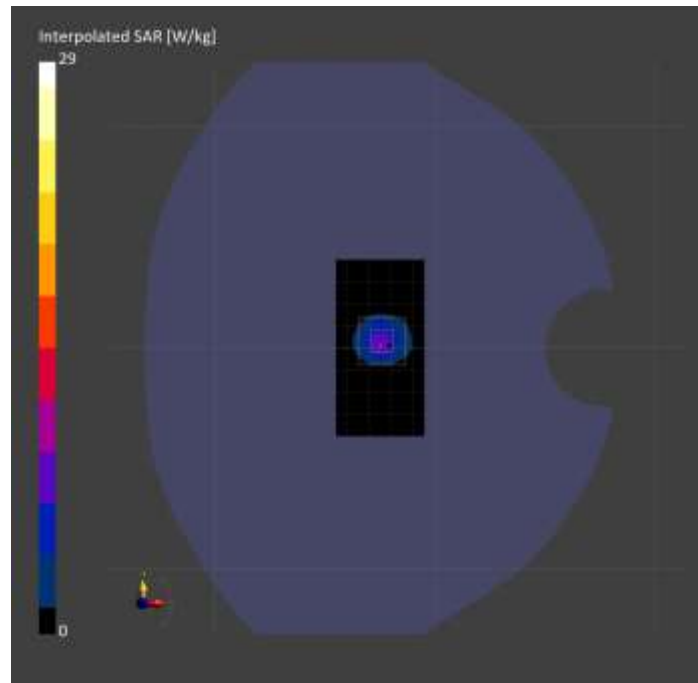
Probe   Calibration Date	EX3DV4 - SN7810   2023-04-25	Phantom	Twin-SAM V8.0 (30deg probe tilt)
DAE   Calibration Date	DAE4 Sn1439   2023-03-16	TSL Type	HBBL-600-10000
Software Version	16.2.4.2524		

## Scans Setup

	Area Scan	Zoom Scan
Grid Extents [mm]	40.0 x 80.0	22.0 x 22.0 x 22.0
Grid Steps [mm]	10.0 x 10.0	4.0 x 4.0 x 1.4
Sensor Surface [mm]	3.0	1.4
Graded Grid	N/A	Yes
M2/M1 [%]		61.5
Dist 3dB Peak [mm]		7.4

## Measurement Results

	Area Scan	Zoom Scan
psSAR1g [W/Kg]	6.27	7.07
psSAR10g [W/Kg]	1.88	2.04
Power Drift [dB]	N/A	-0.00



# System Performance Check Report for D5GHzV2 - SN1138

## Exposure Conditions

Frequency [MHz]   Channel Number	5250.000   0	TSL Permittivity	36.7
Group   UID	CW   0--	TSL Conductivity [S/m]	4.51
Conversion Factor	5.56	Phantom Section   TSL	Flat   HSL

## Hardware Setup

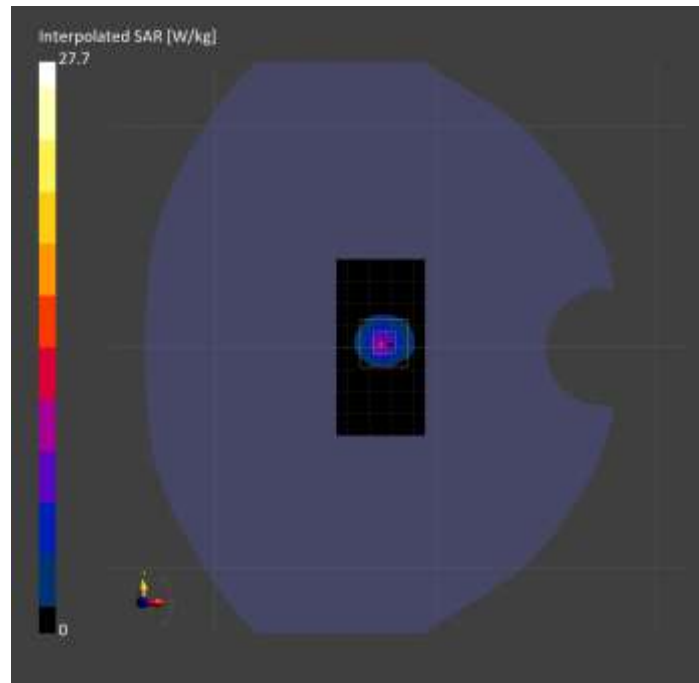
Probe   Calibration Date	EX3DV4 - SN7810   2023-04-25	Phantom	Twin-SAM V8.0 (30deg probe tilt)
DAE   Calibration Date	DAE4 Sn1439   2023-03-16	TSL Type	HBBL-600-10000
Software Version	16.2.4.2524		

## Scans Setup

	Area Scan	Zoom Scan
Grid Extents [mm]	40.0 x 80.0	22.0 x 22.0 x 22.0
Grid Steps [mm]	10.0 x 10.0	4.0 x 4.0 x 1.4
Sensor Surface [mm]	3.0	1.4
Graded Grid	N/A	Yes
M2/M1 [%]		64.1
Dist 3dB Peak [mm]		7.4

## Measurement Results

	Area Scan	Zoom Scan
psSAR1g [W/Kg]	6.31	7.20
psSAR10g [W/Kg]	1.89	2.09
Power Drift [dB]	N/A	0.03



# System Performance Check Report for D5GHzV2 - SN1138

## Exposure Conditions

Frequency [MHz]   Channel Number	5750.000   0	TSL Permittivity	34.3
Group   UID	CW   0--	TSL Conductivity [S/m]	5.00
Conversion Factor	4.86	Phantom Section   TSL	Flat   HSL

## Hardware Setup

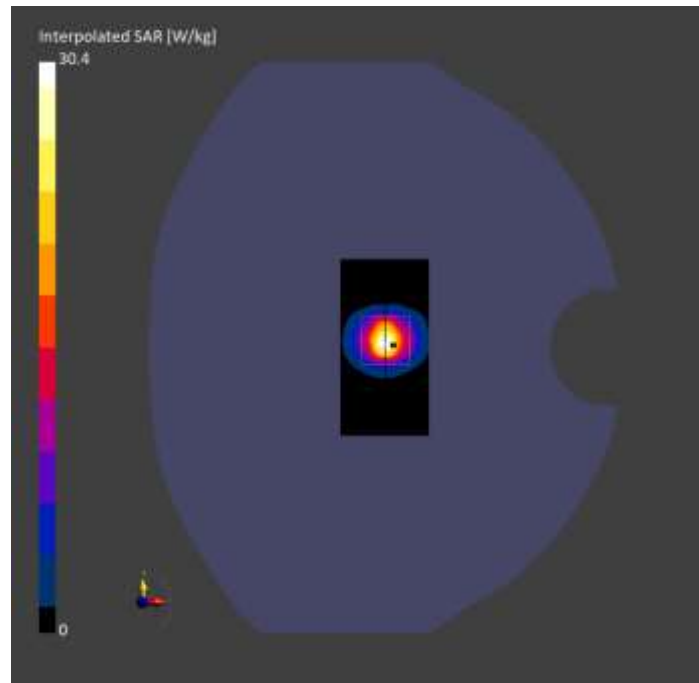
Probe   Calibration Date	EX3DV4 - SN7810   2023-04-25	Phantom	Twin-SAM V8.0 (30deg probe tilt)
DAE   Calibration Date	DAE4 Sn1439   2023-03-16	TSL Type	HBBL-600-10000
Software Version	16.2.4.2524		

## Scans Setup

	Area Scan	Zoom Scan
Grid Extents [mm]	40.0 x 80.0	22.0 x 22.0 x 22.0
Grid Steps [mm]	10.0 x 10.0	4.0 x 4.0 x 1.4
Sensor Surface [mm]	3.0	1.4
Graded Grid	N/A	Yes
M2/M1 [%]		61.8
Dist 3dB Peak [mm]		7.6

## Measurement Results

	Area Scan	Zoom Scan
psSAR1g [W/Kg]	6.62	7.46
psSAR10g [W/Kg]	1.98	2.16
Power Drift [dB]	N/A	0.02



# System Performance Check Report for D2300V2 - SN1002

## Exposure Conditions

Frequency [MHz]   Channel Number	2300.000   0	TSL Permittivity	37.6
Group   UID	CW   0--	TSL Conductivity [S/m]	1.64
Conversion Factor	6.87	Phantom Section   TSL	Flat   HSL

## Hardware Setup

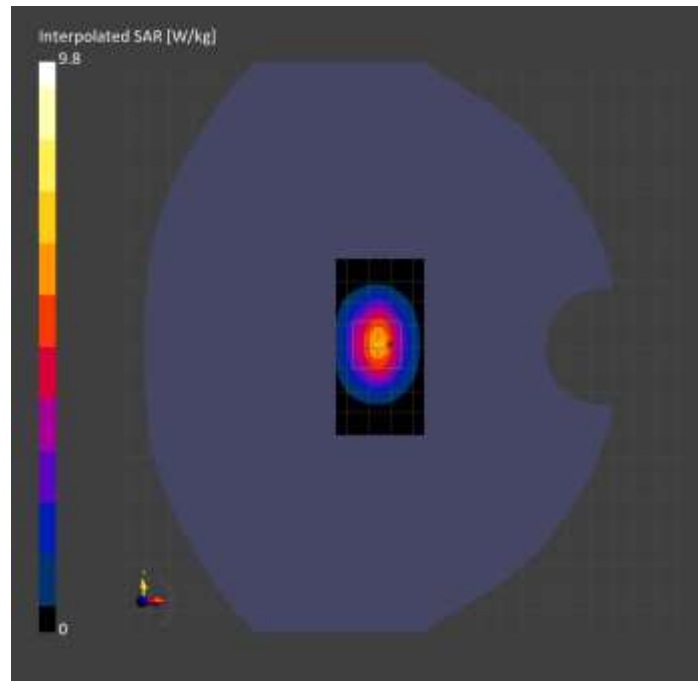
Probe   Calibration Date	EX3DV4 - SN3749   2023-01-27	Phantom	Twin-SAM V8.0 (30deg probe tilt)
DAE   Calibration Date	DAE4 Sn1357   2023-01-27	TSL Type	HBBL-600-10000
Software Version	16.2.4.2524		

## Scans Setup

	Area Scan	Zoom Scan
Grid Extents [mm]	40.0 x 80.0	30.0 x 30.0 x 30.0
Grid Steps [mm]	10.0 x 10.0	5.0 x 5.0 x 1.5
Sensor Surface [mm]	3.0	1.4
Graded Grid	N/A	Yes
M2/M1 [%]		82.8
Dist 3dB Peak [mm]		9.0

## Measurement Results

	Area Scan	Zoom Scan
psSAR1g [W/Kg]	5.12	5.19
psSAR10g [W/Kg]	2.48	2.55
Power Drift [dB]	N/A	0.01



# System Performance Check Report for D835V2 - SN4d002

## Exposure Conditions

Frequency [MHz]   Channel Number	835.000   0	TSL Permittivity	39.8
Group   UID	CW   0--	TSL Conductivity [S/m]	0.872
Conversion Factor	7.83	Phantom Section   TSL	Flat   HSL

## Hardware Setup

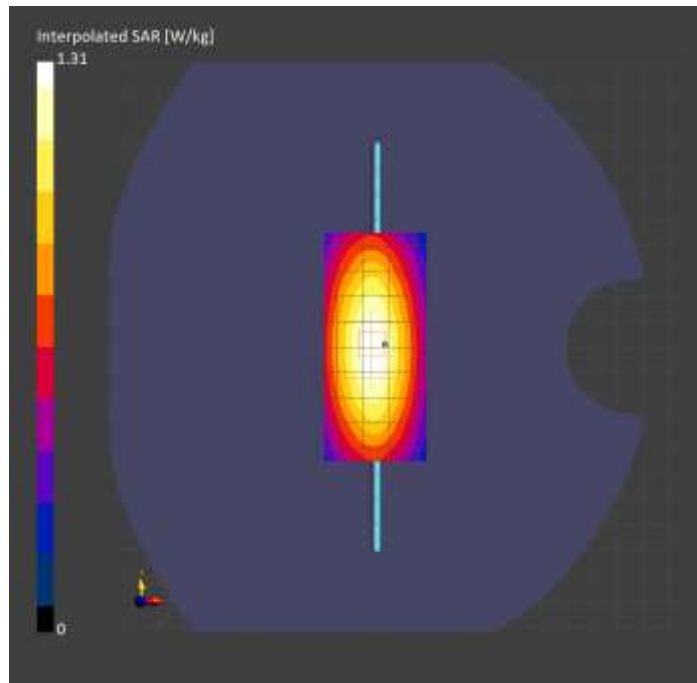
Probe   Calibration Date	EX3DV4 - SN3749   2023-01-27	Phantom	Twin-SAM V8.0 (30deg probe tilt)
DAE   Calibration Date	DAE4 Sn1357   2023-01-27	TSL Type	HBBL-600-10000
Software Version	16.2.4.2524		

## Scans Setup

	Area Scan	Zoom Scan
Grid Extents [mm]	40.0 x 90.0	30.0 x 30.0 x 30.0
Grid Steps [mm]	10.0 x 15.0	6.0 x 6.0 x 1.5
Sensor Surface [mm]	3.0	1.4
Graded Grid	N/A	Yes
M2/M1 [%]		89.7
Dist 3dB Peak [mm]		17.2

## Measurement Results

	Area Scan	Zoom Scan
psSAR1g [W/Kg]	0.924	<b>0.917</b>
psSAR10g [W/Kg]	0.608	<b>0.609</b>
Power Drift [dB]	N/A	0.01



# System Performance Check Report for D1750V2 - SN1053

## Exposure Conditions

Frequency [MHz]   Channel Number	1750.000   0	TSL Permittivity	41.4
Group   UID	CW   0--	TSL Conductivity [S/m]	1.31
Conversion Factor	8.98	Phantom Section   TSL	Flat   HSL

## Hardware Setup

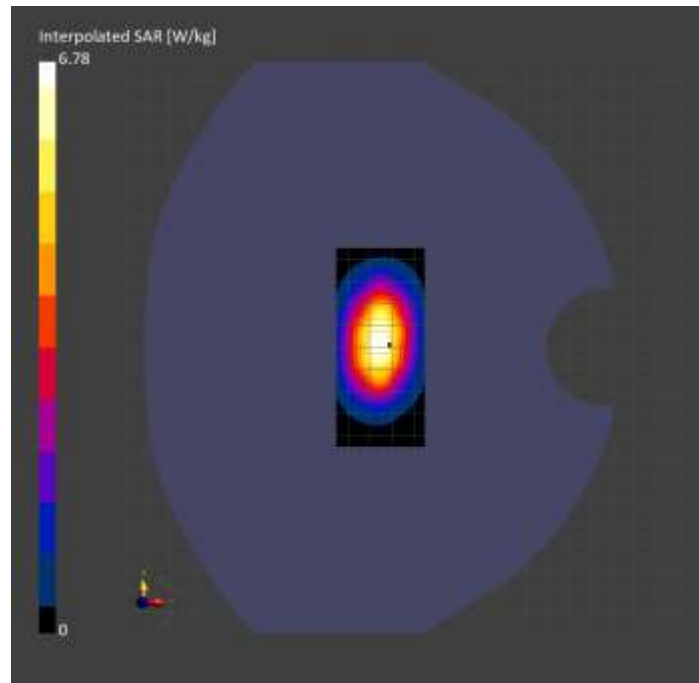
Probe   Calibration Date	EX3DV4 - SN3989   2023-01-26	Phantom	Twin-SAM V8.0 (30deg probe tilt)
DAE   Calibration Date	DAE4 Sn1257   2022-09-20	TSL Type	HBBL-600-10000
Software Version	16.2.4.2524		

## Scans Setup

	Area Scan	Zoom Scan
Grid Extents [mm]	40.0 x 90.0	30.0 x 30.0 x 30.0
Grid Steps [mm]	10.0 x 15.0	6.0 x 6.0 x 1.5
Sensor Surface [mm]	3.0	1.4
Graded Grid	N/A	Yes
M2/M1 [%]		85.3
Dist 3dB Peak [mm]		10.8

## Measurement Results

	Area Scan	Zoom Scan
psSAR1g [W/Kg]	3.86	<b>3.84</b>
psSAR10g [W/Kg]	2.08	<b>2.08</b>
Power Drift [dB]	N/A	-0.01





# System Performance Check Report for D3700V2 - SN1110

## Exposure Conditions

Frequency [MHz]   Channel Number	3700.000   0	TSL Permittivity	38.5
Group   UID	CW   0--	TSL Conductivity [S/m]	2.99
Conversion Factor	6.94	Phantom Section   TSL	Flat   HSL

## Hardware Setup

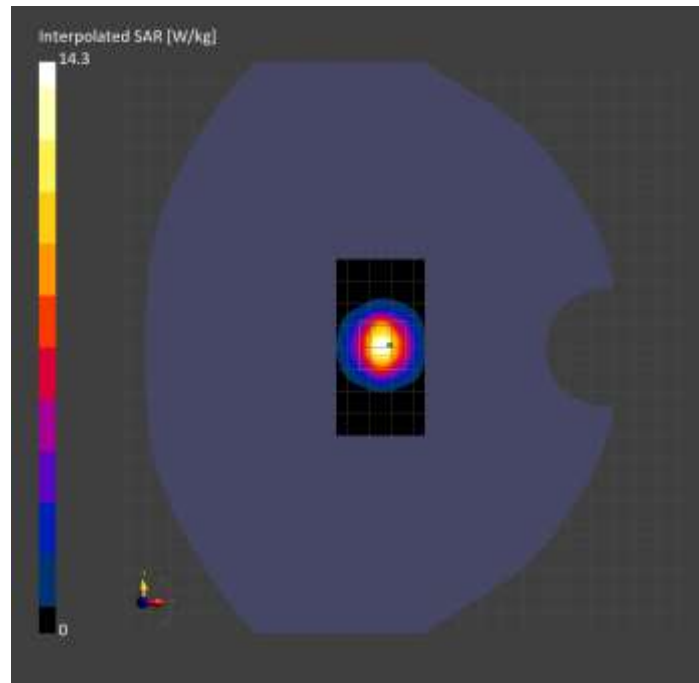
Probe   Calibration Date	EX3DV4 - SN3989   2023-01-26	Phantom	Twin-SAM V8.0 (30deg probe tilt)
DAE   Calibration Date	DAE4 Sn1257   2022-09-20	TSL Type	HBBL-600-10000
Software Version	16.2.4.2524		

## Scans Setup

	Area Scan	Zoom Scan
Grid Extents [mm]	40.0 x 80.0	28.0 x 28.0 x 28.0
Grid Steps [mm]	10.0 x 10.0	5.0 x 5.0 x 1.4
Sensor Surface [mm]	3.0	1.4
Graded Grid	N/A	Yes
M2/M1 [%]		78.2
Dist 3dB Peak [mm]		9.0

## Measurement Results

	Area Scan	Zoom Scan
psSAR1g [W/Kg]	5.85	<b>5.81</b>
psSAR10g [W/Kg]	2.19	<b>2.23</b>
Power Drift [dB]	N/A	0.01



# System Performance Check Report for D3500V2 - SN1011

## Exposure Conditions

Frequency [MHz]   Channel Number	3500.000   0	TSL Permittivity	38.9
Group   UID	CW   0--	TSL Conductivity [S/m]	2.80
Conversion Factor	6.78	Phantom Section   TSL	Flat   HSL

## Hardware Setup

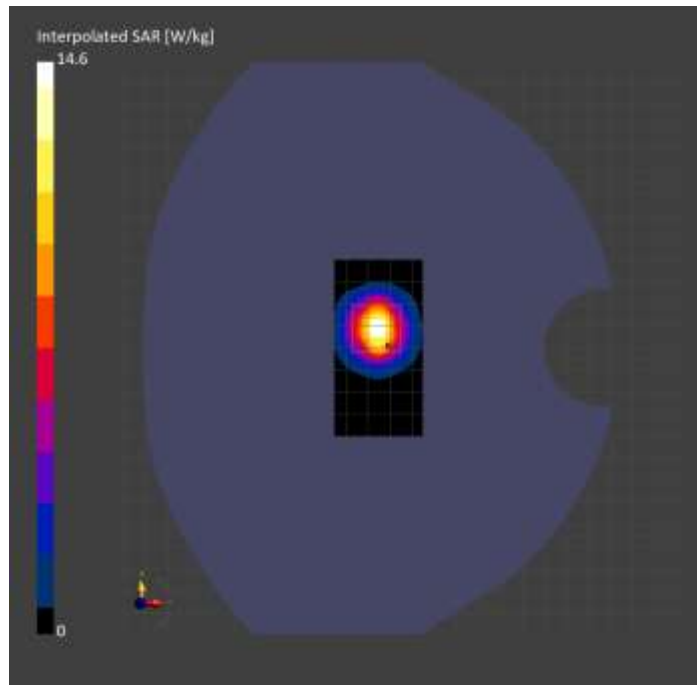
Probe   Calibration Date	EX3DV4 - SN3989   2023-01-26	Phantom	Twin-SAM V8.0 (30deg probe tilt)
DAE   Calibration Date	DAE4 Sn1257   2022-09-20	TSL Type	HBBL-600-10000
Software Version	16.2.4.2524		

## Scans Setup

	Area Scan	Zoom Scan
Grid Extents [mm]	40.0 x 80.0	28.0 x 28.0 x 28.0
Grid Steps [mm]	10.0 x 10.0	5.0 x 5.0 x 1.4
Sensor Surface [mm]	3.0	1.4
Graded Grid	N/A	Yes
M2/M1 [%]		77.9
Dist 3dB Peak [mm]		8.6

## Measurement Results

	Area Scan	Zoom Scan
psSAR1g [W/Kg]	5.83	6.02
psSAR10g [W/Kg]	2.26	2.37
Power Drift [dB]	N/A	0.01



# System Performance Check Report for D1640V2 - SN334

## Exposure Conditions

Frequency [MHz]   Channel Number	1640.000   0	TSL Permittivity	40.9
Group   UID	CW   0--	TSL Conductivity [S/m]	1.25
Conversion Factor	8.86	Phantom Section   TSL	Flat   HSL

## Hardware Setup

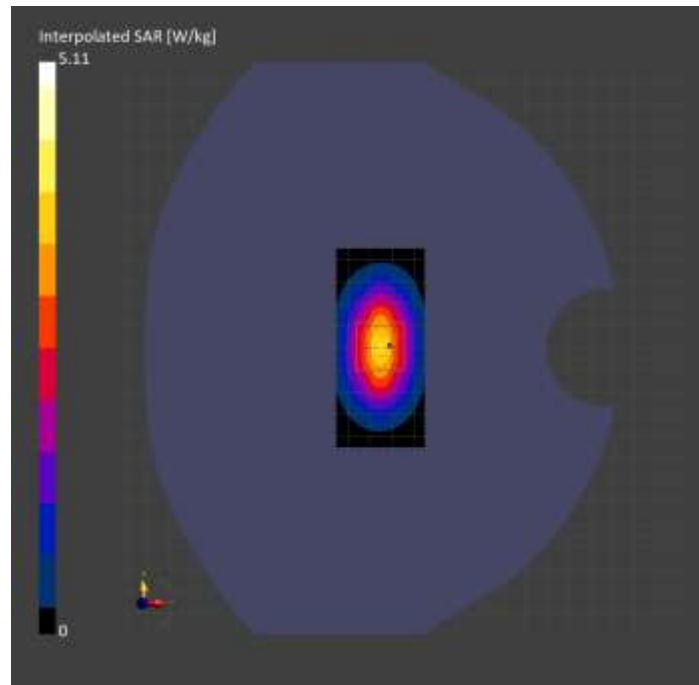
Probe   Calibration Date	EX3DV4 - SN3989   2023-01-26	Phantom	Twin-SAM V8.0 (30deg probe tilt)
DAE   Calibration Date	DAE4 Sn1257   2022-09-20	TSL Type	HBBL-600-10000
Software Version	16.2.4.2524		

## Scans Setup

	Area Scan	Zoom Scan
Grid Extents [mm]	40.0 x 90.0	30.0 x 30.0 x 30.0
Grid Steps [mm]	10.0 x 15.0	6.0 x 6.0 x 1.5
Sensor Surface [mm]	3.0	1.4
Graded Grid	N/A	Yes
M2/M1 [%]		88.1
Dist 3dB Peak [mm]		10.8

## Measurement Results

	Area Scan	Zoom Scan
psSAR1g [W/Kg]	3.13	<b>3.07</b>
psSAR10g [W/Kg]	1.72	<b>1.71</b>
Power Drift [dB]	N/A	0.00



# System Performance Check Report for D1750V2 - SN1050

## Exposure Conditions

Frequency [MHz]   Channel Number	1750.000   0	TSL Permittivity	38.2
Group   UID	CW   0--	TSL Conductivity [S/m]	1.32
Conversion Factor	8.66	Phantom Section   TSL	Flat   HSL

## Hardware Setup

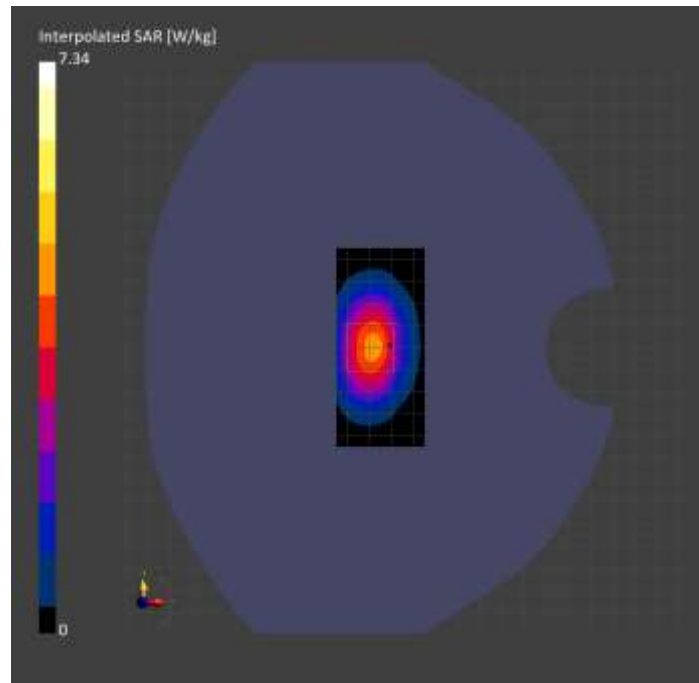
Probe   Calibration Date	EX3DV4 - SN7569   2023-04-18	Phantom	Twin-SAM V8.0 (30deg probe tilt)
DAE   Calibration Date	DAE4 Sn1547   2023-04-18	TSL Type	HBBL-600-10000
Software Version	16.2.4.2524		

## Scans Setup

	Area Scan	Zoom Scan
Grid Extents [mm]	40.0 x 90.0	30.0 x 30.0 x 30.0
Grid Steps [mm]	10.0 x 15.0	6.0 x 6.0 x 1.5
Sensor Surface [mm]	3.0	1.4
Graded Grid	N/A	Yes
M2/M1 [%]		80.7
Dist 3dB Peak [mm]		10.8

## Measurement Results

	Area Scan	Zoom Scan
psSAR1g [W/Kg]	3.76	<b>3.83</b>
psSAR10g [W/Kg]	2.08	<b>2.06</b>
Power Drift [dB]	N/A	0.01



# System Performance Check Report for D2600V2 - SN1036

## Exposure Conditions

Frequency [MHz]   Channel Number	2600.000   0	TSL Permittivity	40.0
Group   UID	CW   0--	TSL Conductivity [S/m]	1.91
Conversion Factor	7.55	Phantom Section   TSL	Flat   HSL

## Hardware Setup

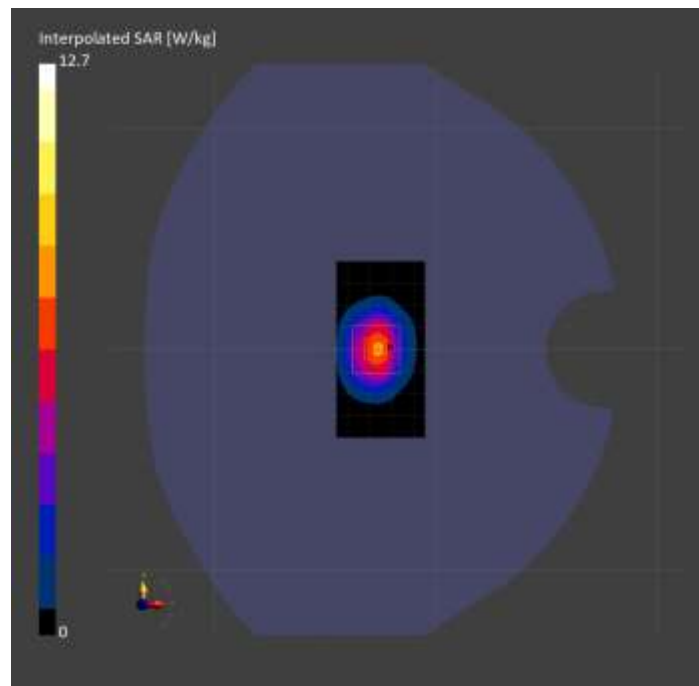
Probe   Calibration Date	EX3DV4 - SN3991   2022-09-22	Phantom	Twin-SAM V8.0 (30deg probe tilt)
DAE   Calibration Date	DAE4 Sn1674   2023-05-11	TSL Type	HBBL-600-10000
Software Version	16.2.4.2524		

## Scans Setup

	Area Scan	Zoom Scan
Grid Extents [mm]	40.0 x 80.0	30.0 x 30.0 x 30.0
Grid Steps [mm]	10.0 x 10.0	5.0 x 5.0 x 1.5
Sensor Surface [mm]	3.0	1.4
Graded Grid	N/A	Yes
M2/M1 [%]		78.5
Dist 3dB Peak [mm]		9.0

## Measurement Results

	Area Scan	Zoom Scan
psSAR1g [W/Kg]	5.88	<b>5.91</b>
psSAR10g [W/Kg]	2.68	<b>2.70</b>
Power Drift [dB]	N/A	-0.06



# System Performance Check Report for D1900V2 - SN5d163

## Exposure Conditions

Frequency [MHz]   Channel Number	1900.000   0	TSL Permittivity	40.3
Group   UID	CW   0--	TSL Conductivity [S/m]	1.42
Conversion Factor	8.43	Phantom Section   TSL	Flat   HSL

## Hardware Setup

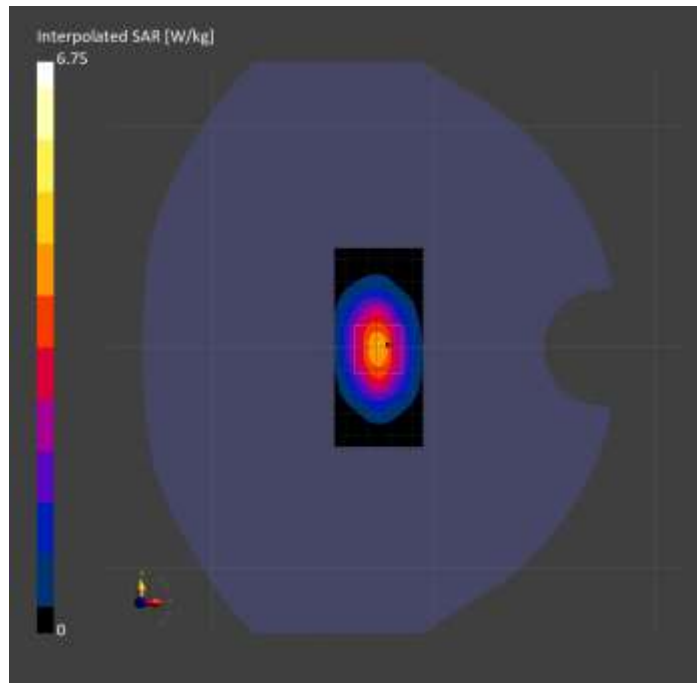
Probe   Calibration Date	EX3DV4 - SN3991   2022-09-22	Phantom	Twin-SAM V8.0 (30deg probe tilt)
DAE   Calibration Date	DAE4 Sn1674   2023-05-11	TSL Type	HBBL-600-10000
Software Version	16.2.4.2524		

## Scans Setup

	Area Scan	Zoom Scan
Grid Extents [mm]	40.0 x 90.0	30.0 x 30.0 x 30.0
Grid Steps [mm]	10.0 x 15.0	6.0 x 6.0 x 1.5
Sensor Surface [mm]	3.0	1.4
Graded Grid	N/A	Yes
M2/M1 [%]		81.7
Dist 3dB Peak [mm]		10.3

## Measurement Results

	Area Scan	Zoom Scan
psSAR1g [W/Kg]	3.59	<b>3.56</b>
psSAR10g [W/Kg]	1.87	<b>1.87</b>
Power Drift [dB]	N/A	-0.01



# System Performance Check Report for D2300V2 - SN1002

## Exposure Conditions

Frequency [MHz]   Channel Number	2300.000   0	TSL Permittivity	39.8
Group   UID	CW   0--	TSL Conductivity [S/m]	1.64
Conversion Factor	7.31	Phantom Section   TSL	Flat   HSL

## Hardware Setup

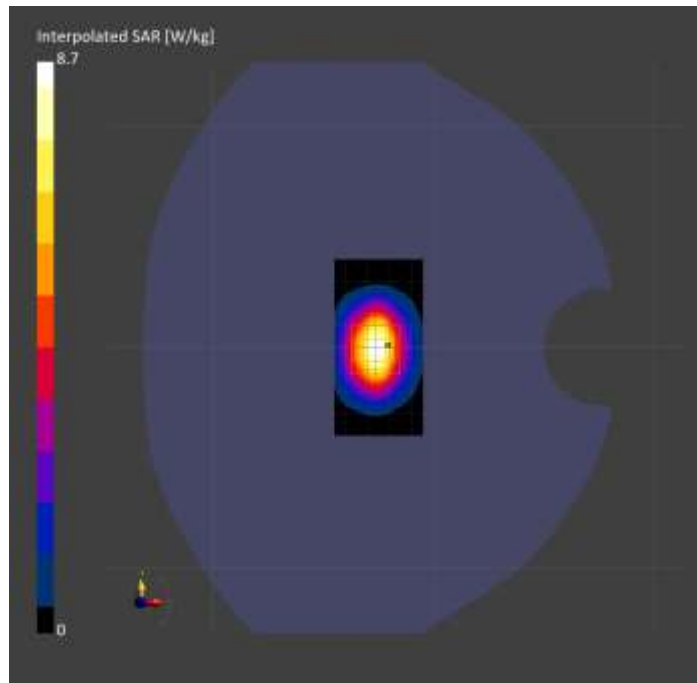
Probe   Calibration Date	EX3DV4 - SN7806   2023-04-04	Phantom	Twin-SAM V8.0 (30deg probe tilt)
DAE   Calibration Date	DAE4 Sn1784   2023-04-03	TSL Type	HBBL-600-10000
Software Version	16.2.4.2524		

## Scans Setup

	Area Scan	Zoom Scan
Grid Extents [mm]	40.0 x 80.0	30.0 x 30.0 x 30.0
Grid Steps [mm]	10.0 x 10.0	5.0 x 5.0 x 1.5
Sensor Surface [mm]	3.0	1.4
Graded Grid	N/A	Yes
M2/M1 [%]		81.1
Dist 3dB Peak [mm]		10.0

## Measurement Results

	Area Scan	Zoom Scan
psSAR1g [W/Kg]	4.51	<b>4.45</b>
psSAR10g [W/Kg]	2.20	<b>2.21</b>
Power Drift [dB]	N/A	-0.15



# System Performance Check Report for D2300V2 - SN1002

## Exposure Conditions

Frequency [MHz]   Channel Number	2300.000   0	TSL Permittivity	38.6
Group   UID	CW   0--	TSL Conductivity [S/m]	1.61
Conversion Factor	7.31	Phantom Section   TSL	Flat   HSL

## Hardware Setup

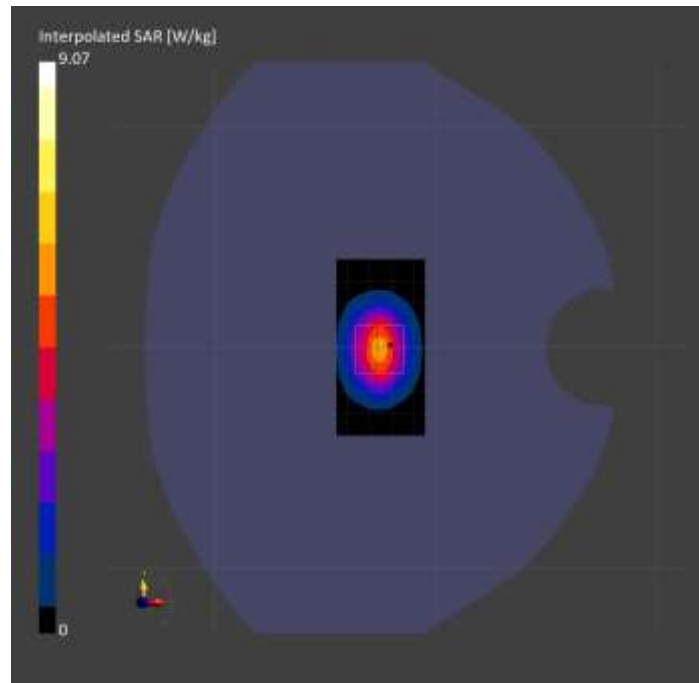
Probe   Calibration Date	EX3DV4 - SN7806   2023-04-04	Phantom	Twin-SAM V8.0 (30deg probe tilt)
DAE   Calibration Date	DAE4 Sn1784   2023-04-03	TSL Type	HBBL-600-10000
Software Version	16.2.4.2524		

## Scans Setup

	Area Scan	Zoom Scan
Grid Extents [mm]	40.0 x 80.0	30.0 x 30.0 x 30.0
Grid Steps [mm]	10.0 x 10.0	5.0 x 5.0 x 1.5
Sensor Surface [mm]	3.0	1.4
Graded Grid	N/A	Yes
M2/M1 [%]		80.2
Dist 3dB Peak [mm]		10.0

## Measurement Results

	Area Scan	Zoom Scan
psSAR1g [W/Kg]	4.52	<b>4.57</b>
psSAR10g [W/Kg]	2.20	<b>2.26</b>
Power Drift [dB]	N/A	0.01





# System Performance Check Report for D1900V2 - SN5d163

## Exposure Conditions

Frequency [MHz]   Channel Number	1900.000   0	TSL Permittivity	40.2
Group   UID	CW   0--	TSL Conductivity [S/m]	1.43
Conversion Factor	7.53	Phantom Section   TSL	Flat   HSL

## Hardware Setup

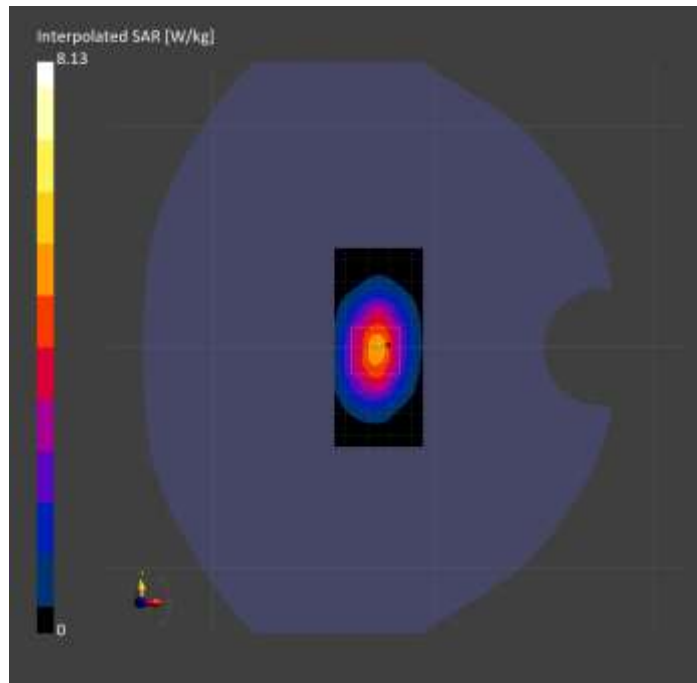
Probe   Calibration Date	EX3DV4 - SN7807   2023-04-11	Phantom	Twin-SAM V8.0 (30deg probe tilt)
DAE   Calibration Date	DAE4 Sn1799   2023-04-04	TSL Type	HBBL-600-10000
Software Version	16.2.4.2524		

## Scans Setup

	Area Scan	Zoom Scan
Grid Extents [mm]	40.0 x 90.0	30.0 x 30.0 x 30.0
Grid Steps [mm]	10.0 x 15.0	6.0 x 6.0 x 1.5
Sensor Surface [mm]	3.0	1.4
Graded Grid	N/A	Yes
M2/M1 [%]		81.2
Dist 3dB Peak [mm]		10.8

## Measurement Results

	Area Scan	Zoom Scan
psSAR1g [W/Kg]	4.23	<b>4.25</b>
psSAR10g [W/Kg]	2.22	<b>2.22</b>
Power Drift [dB]	N/A	-0.01



# System Performance Check Report for D1900V2 - SN5d163

## Exposure Conditions

Frequency [MHz]   Channel Number	1900.000   0	TSL Permittivity	39.9
Group   UID	CW   0--	TSL Conductivity [S/m]	1.44
Conversion Factor	7.53	Phantom Section   TSL	Flat   HSL

## Hardware Setup

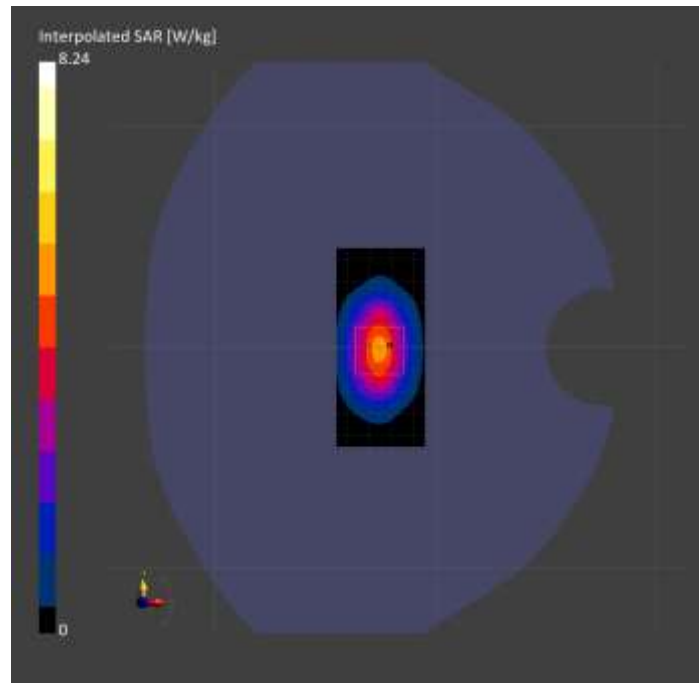
Probe   Calibration Date	EX3DV4 - SN7807   2023-04-11	Phantom	Twin-SAM V8.0 (30deg probe tilt)
DAE   Calibration Date	DAE4 Sn1799   2023-04-04	TSL Type	HBBL-600-10000
Software Version	16.2.4.2524		

## Scans Setup

	Area Scan	Zoom Scan
Grid Extents [mm]	40.0 x 90.0	30.0 x 30.0 x 30.0
Grid Steps [mm]	10.0 x 15.0	6.0 x 6.0 x 1.5
Sensor Surface [mm]	3.0	1.4
Graded Grid	N/A	Yes
M2/M1 [%]		80.2
Dist 3dB Peak [mm]		9.6

## Measurement Results

	Area Scan	Zoom Scan
psSAR1g [W/Kg]	4.16	4.19
psSAR10g [W/Kg]	2.17	2.17
Power Drift [dB]	N/A	-0.04



# System Performance Check Report for D2450V2 - SN899

## Exposure Conditions

Frequency [MHz]   Channel Number	2450.000   0	TSL Permittivity	37.7
Group   UID	CW   0--	TSL Conductivity [S/m]	1.87
Conversion Factor	7.04	Phantom Section   TSL	Flat   HSL

## Hardware Setup

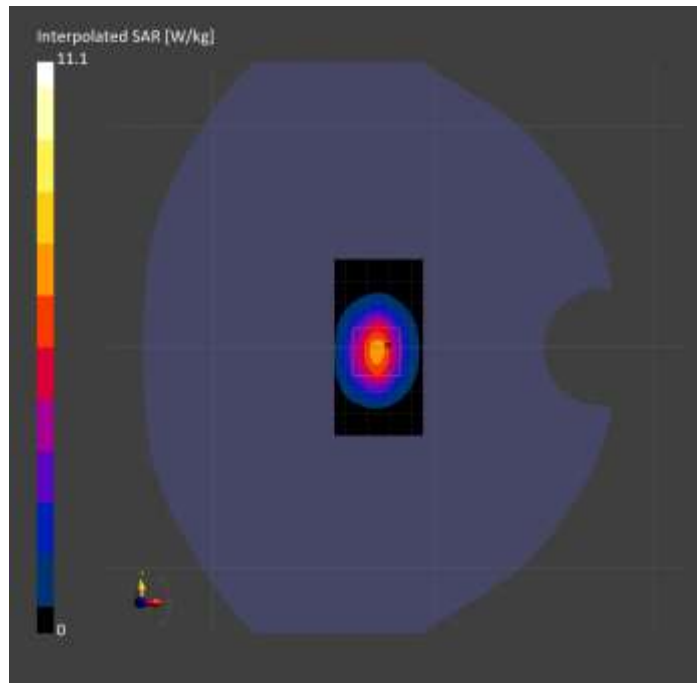
Probe   Calibration Date	EX3DV4 - SN7807   2023-04-11	Phantom	Twin-SAM V8.0 (30deg probe tilt)
DAE   Calibration Date	DAE4 Sn1799   2023-04-04	TSL Type	HBBL-600-10000
Software Version	16.2.4.2524		

## Scans Setup

	Area Scan	Zoom Scan
Grid Extents [mm]	40.0 x 80.0	30.0 x 30.0 x 30.0
Grid Steps [mm]	10.0 x 10.0	5.0 x 5.0 x 1.5
Sensor Surface [mm]	3.0	1.4
Graded Grid	N/A	Yes
M2/M1 [%]		80.4
Dist 3dB Peak [mm]		9.9

## Measurement Results

	Area Scan	Zoom Scan
psSAR1g [W/Kg]	5.44	<b>5.46</b>
psSAR10g [W/Kg]	2.57	<b>2.58</b>
Power Drift [dB]	N/A	-0.01



# System Performance Check Report for D750V3 - SN1019

## Exposure Conditions

Frequency [MHz]   Channel Number	750.000   0	TSL Permittivity	42.0
Group   UID	CW   0--	TSL Conductivity [S/m]	0.878
Conversion Factor	10.62	Phantom Section   TSL	Flat   HSL

## Hardware Setup

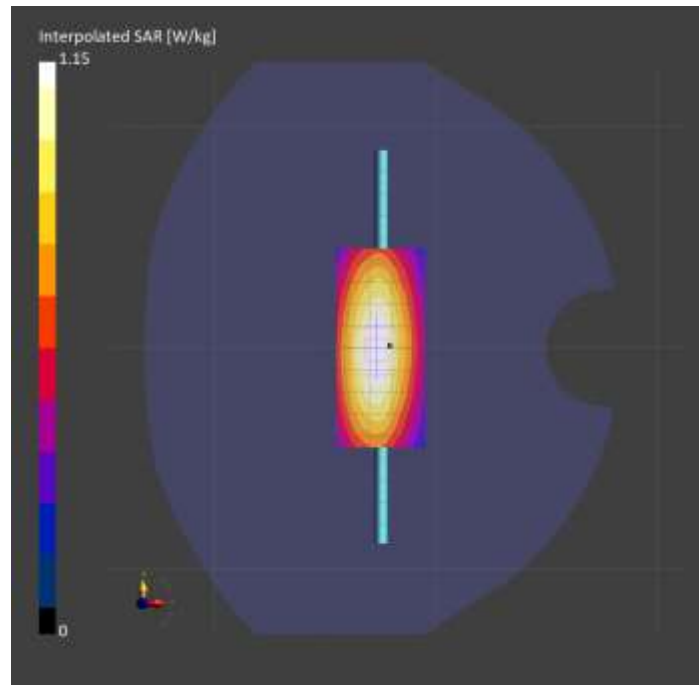
Probe   Calibration Date	EX3DV4 - SN7589   2023-04-18	Phantom	Twin-SAM V5.0 (30deg probe tilt)
DAE   Calibration Date	DAE4 Sn1544   2023-01-24	TSL Type	HBBL-600-10000
Software Version	16.2.4.2524		

## Scans Setup

	Area Scan	Zoom Scan
Grid Extents [mm]	40.0 x 90.0	30.0 x 30.0 x 30.0
Grid Steps [mm]	10.0 x 15.0	6.0 x 6.0 x 1.5
Sensor Surface [mm]	3.0	1.4
Graded Grid	N/A	Yes
M2/M1 [%]		88.2
Dist 3dB Peak [mm]		> 15.0

## Measurement Results

	Area Scan	Zoom Scan
psSAR1g [W/Kg]	0.779	<b>0.775</b>
psSAR10g [W/Kg]	0.521	<b>0.518</b>
Power Drift [dB]	N/A	-0.02



# System Performance Check Report for D2600V2 - SN1036

## Exposure Conditions

Frequency [MHz]   Channel Number	2600.000   0	TSL Permittivity	39.4
Group   UID	CW   0--	TSL Conductivity [S/m]	1.99
Conversion Factor	7.64	Phantom Section   TSL	Flat   HSL

## Hardware Setup

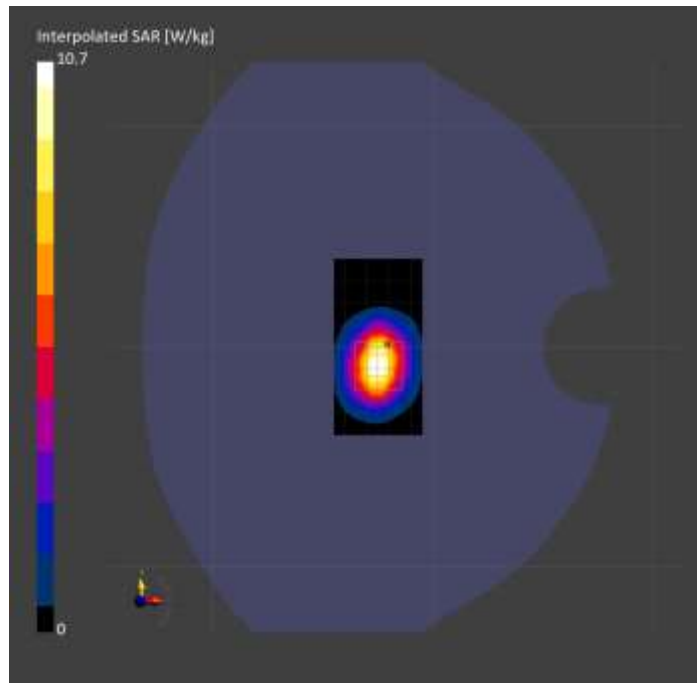
Probe   Calibration Date	EX3DV4 - SN7589   2023-04-18	Phantom	Twin-SAM V5.0 (30deg probe tilt)
DAE   Calibration Date	DAE4 Sn1544   2023-01-24	TSL Type	HBBL-600-10000
Software Version	16.2.4.2524		

## Scans Setup

	Area Scan	Zoom Scan
Grid Extents [mm]	40.0 x 80.0	30.0 x 30.0 x 30.0
Grid Steps [mm]	10.0 x 10.0	5.0 x 5.0 x 1.5
Sensor Surface [mm]	3.0	1.4
Graded Grid	N/A	Yes
M2/M1 [%]		78.7
Dist 3dB Peak [mm]		9.0

## Measurement Results

	Area Scan	Zoom Scan
psSAR1g [W/Kg]	5.00	5.02
psSAR10g [W/Kg]	2.24	2.31
Power Drift [dB]	N/A	0.03



# System Performance Check Report for D750V3 - SN1019

## Exposure Conditions

Frequency [MHz]   Channel Number	750.000   0	TSL Permittivity	41.6
Group   UID	CW   0--	TSL Conductivity [S/m]	0.913
Conversion Factor	8.93	Phantom Section   TSL	Flat   HSL

## Hardware Setup

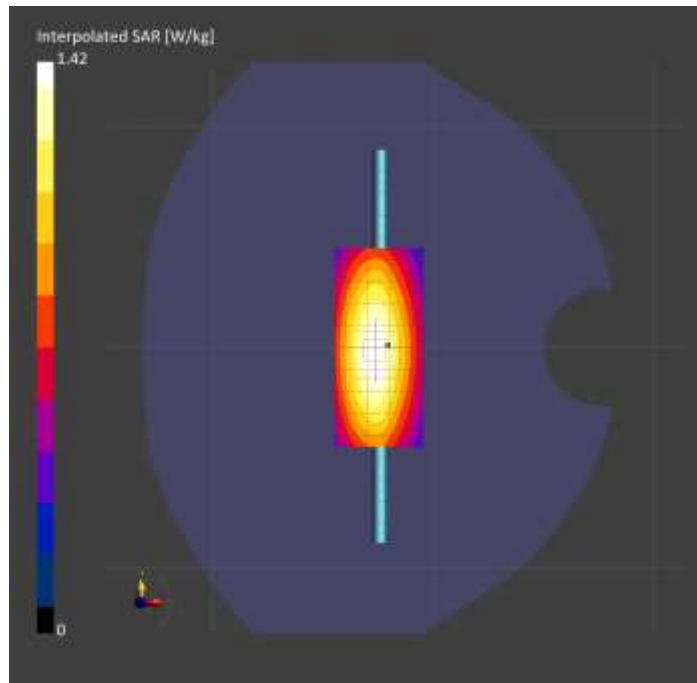
Probe   Calibration Date	EX3DV4 - SN7448   2023-02-14	Phantom	Twin-SAM V5.0 (30deg probe tilt)
DAE   Calibration Date	DAE4 Sn1472   2023-01-23	TSL Type	HBBL-600-10000
Software Version	16.2.4.2524		

## Scans Setup

	Area Scan	Zoom Scan
Grid Extents [mm]	40.0 x 90.0	30.0 x 30.0 x 30.0
Grid Steps [mm]	10.0 x 15.0	6.0 x 6.0 x 1.5
Sensor Surface [mm]	3.0	1.4
Graded Grid	N/A	Yes
M2/M1 [%]		87.6
Dist 3dB Peak [mm]		> 15.0

## Measurement Results

	Area Scan	Zoom Scan
psSAR1g [W/Kg]	0.936	<b>0.932</b>
psSAR10g [W/Kg]	0.625	<b>0.614</b>
Power Drift [dB]	N/A	0.00



# System Performance Check Report for D2600V2 - SN1036

## Exposure Conditions

Frequency [MHz]   Channel Number	2600.000   0	TSL Permittivity	38.1
Group   UID	CW   0--	TSL Conductivity [S/m]	1.92
Conversion Factor	7.39	Phantom Section   TSL	Flat   HSL

## Hardware Setup

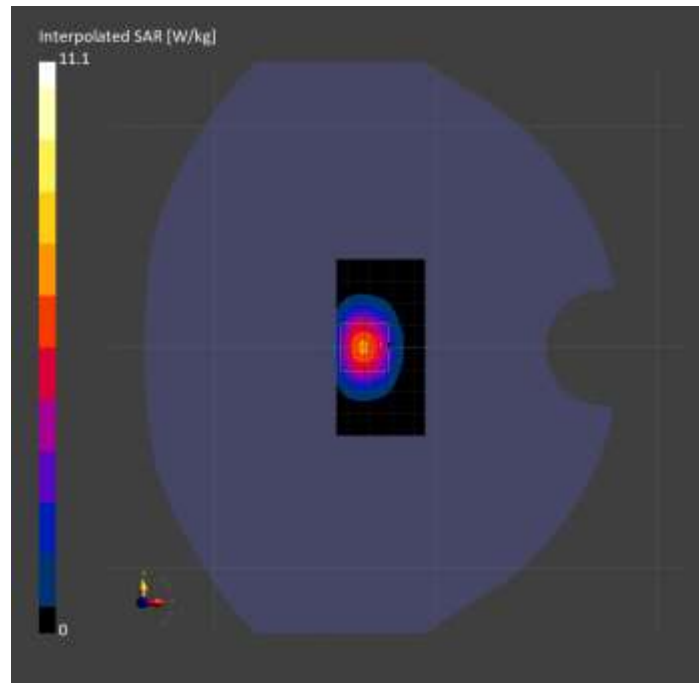
Probe   Calibration Date	EX3DV4 - SN7448   2023-02-14	Phantom	Twin-SAM V5.0 (30deg probe tilt)
DAE   Calibration Date	DAE4 Sn1472   2023-01-23	TSL Type	HBBL-600-10000
Software Version	16.2.4.2524		

## Scans Setup

	Area Scan	Zoom Scan
Grid Extents [mm]	40.0 x 80.0	30.0 x 30.0 x 30.0
Grid Steps [mm]	10.0 x 10.0	5.0 x 5.0 x 1.5
Sensor Surface [mm]	3.0	1.4
Graded Grid	N/A	Yes
M2/M1 [%]		79.9
Dist 3dB Peak [mm]		9.0

## Measurement Results

	Area Scan	Zoom Scan
psSAR1g [W/Kg]	5.09	5.21
psSAR10g [W/Kg]	2.38	2.35
Power Drift [dB]	N/A	0.07



# System Performance Check Report for D2600V2 - SN1036

## Exposure Conditions

Frequency [MHz]   Channel Number	2600.000   0	TSL Permittivity	40.0
Group   UID	CW   0--	TSL Conductivity [S/m]	1.94
Conversion Factor	7.33	Phantom Section   TSL	Flat   HSL

## Hardware Setup

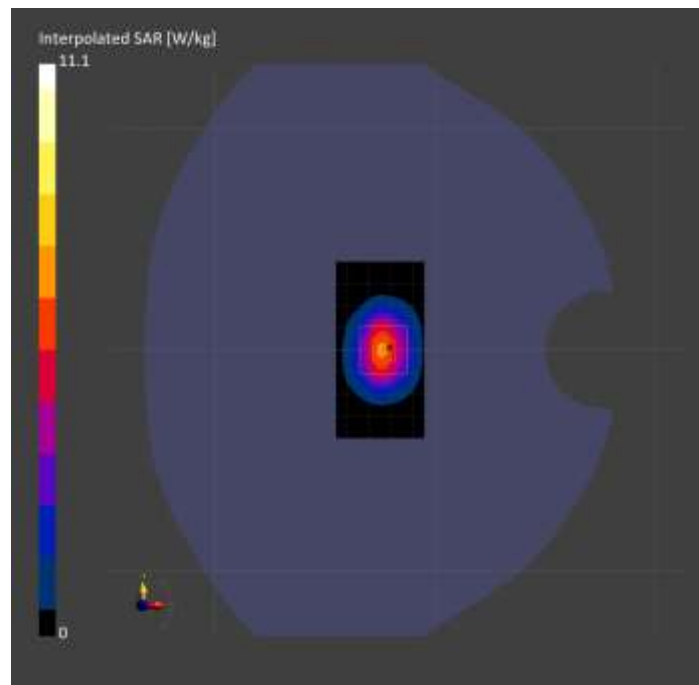
Probe   Calibration Date	EX3DV4 - SN7808   2023-04-18	Phantom	Twin-SAM V8.0 (30deg probe tilt)
DAE   Calibration Date	DAE4 Sn1796   2023-04-03	TSL Type	HBBL-600-10000
Software Version	16.2.4.2524		

## Scans Setup

	Area Scan	Zoom Scan
Grid Extents [mm]	40.0 x 80.0	30.0 x 30.0 x 30.0
Grid Steps [mm]	10.0 x 10.0	5.0 x 5.0 x 1.5
Sensor Surface [mm]	3.0	1.4
Graded Grid	N/A	Yes
M2/M1 [%]		78.1
Dist 3dB Peak [mm]		9.0

## Measurement Results

	Area Scan	Zoom Scan
psSAR1g [W/Kg]	5.13	5.12
psSAR10g [W/Kg]	2.36	2.33
Power Drift [dB]	N/A	0.02





# System Performance Check Report for D3700V2 - SN1110

## Exposure Conditions

Frequency [MHz]   Channel Number	3700.000   0	TSL Permittivity	38.8
Group   UID	CW   0--	TSL Conductivity [S/m]	3.11
Conversion Factor	6.66	Phantom Section   TSL	Flat   HSL

## Hardware Setup

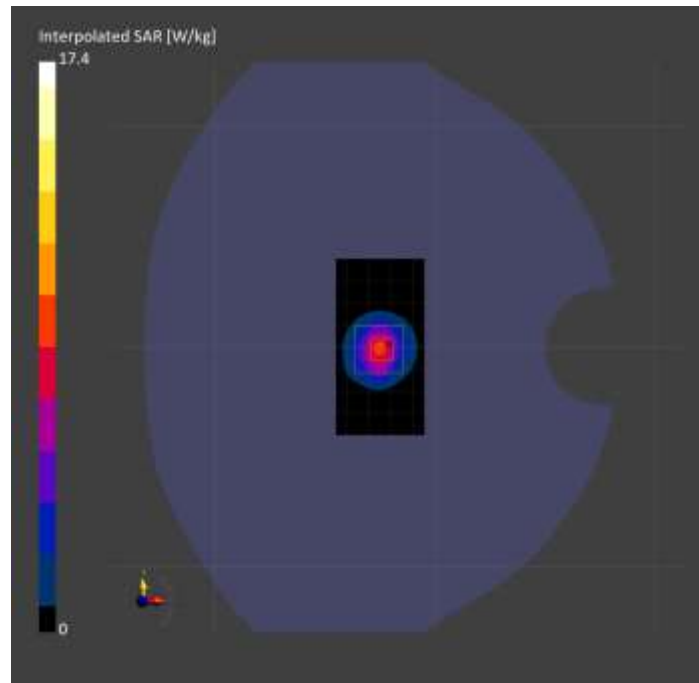
Probe   Calibration Date	EX3DV4 - SN3990   2023-02-17	Phantom	Twin-SAM V5.0 (30deg probe tilt)
DAE   Calibration Date	DAE4 Sn1545   2023-02-14	TSL Type	HBBL-600-10000
Software Version	16.2.4.2524		

## Scans Setup

	Area Scan	Zoom Scan
Grid Extents [mm]	40.0 x 80.0	30.0 x 30.0 x 28.0
Grid Steps [mm]	10.0 x 10.0	5.0 x 5.0 x 1.4
Sensor Surface [mm]	3.0	1.4
Graded Grid	N/A	Yes
M2/M1 [%]		76.9
Dist 3dB Peak [mm]		8.1

## Measurement Results

	Area Scan	Zoom Scan
psSAR1g [W/Kg]	6.49	<b>6.80</b>
psSAR10g [W/Kg]	2.37	<b>2.57</b>
Power Drift [dB]	N/A	-0.10



# System Performance Check Report for D3500V2 - SN1011

## Exposure Conditions

Frequency [MHz]   Channel Number	3500.000   0	TSL Permittivity	36.7
Group   UID	CW   0--	TSL Conductivity [S/m]	2.88
Conversion Factor	6.79	Phantom Section   TSL	Flat   HSL

## Hardware Setup

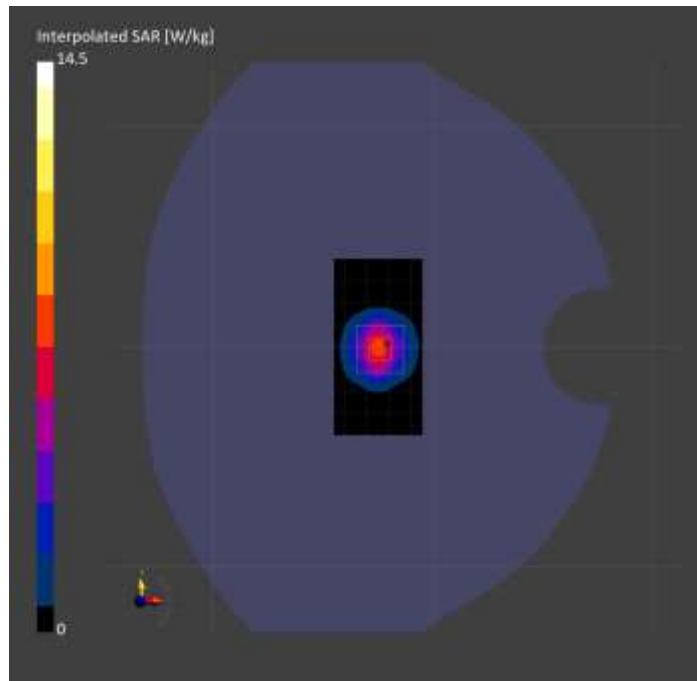
Probe   Calibration Date	EX3DV4 - SN3990   2023-02-17	Phantom	Twin-SAM V5.0 (30deg probe tilt)
DAE   Calibration Date	DAE4 Sn1545   2023-02-14	TSL Type	HBBL-600-10000
Software Version	16.2.4.2524		

## Scans Setup

	Area Scan	Zoom Scan
Grid Extents [mm]	40.0 x 80.0	30.0 x 30.0 x 28.0
Grid Steps [mm]	10.0 x 10.0	5.0 x 5.0 x 1.4
Sensor Surface [mm]	3.0	1.4
Graded Grid	N/A	Yes
M2/M1 [%]		78.0
Dist 3dB Peak [mm]		8.0

## Measurement Results

	Area Scan	Zoom Scan
psSAR1g [W/Kg]	5.79	<b>5.94</b>
psSAR10g [W/Kg]	2.23	<b>2.35</b>
Power Drift [dB]	N/A	0.03



# System Performance Check Report for D2600V2 - SN1036

## Exposure Conditions

Frequency [MHz]   Channel Number	2600.000   0	TSL Permittivity	39.4
Group   UID	CW   0--	TSL Conductivity [S/m]	1.90
Conversion Factor	7.32	Phantom Section   TSL	Flat   HSL

## Hardware Setup

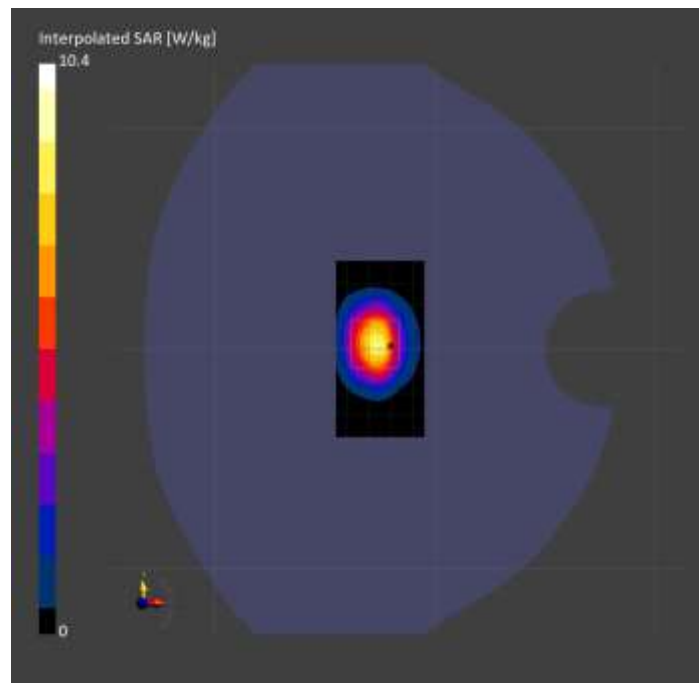
Probe   Calibration Date	EX3DV4 - SN3885   2022-09-20	Phantom	Twin-SAM V5.0 (30deg probe tilt)
DAE   Calibration Date	DAE4 Sn1548   2023-02-14	TSL Type	HBBL-600-10000
Software Version	16.2.4.2524		

## Scans Setup

	Area Scan	Zoom Scan
Grid Extents [mm]	40.0 x 80.0	30.0 x 30.0 x 30.0
Grid Steps [mm]	10.0 x 10.0	5.0 x 5.0 x 1.5
Sensor Surface [mm]	3.0	1.4
Graded Grid	N/A	Yes
M2/M1 [%]		79.9
Dist 3dB Peak [mm]		9.1

## Measurement Results

	Area Scan	Zoom Scan
psSAR1g [W/Kg]	6.73	5.01
psSAR10g [W/Kg]	3.07	2.28
Power Drift [dB]	N/A	-0.13



# System Performance Check Report for D2300V2 - SN1058

## Exposure Conditions

Frequency [MHz]   Channel Number	2300.000   0	TSL Permittivity	39.9
Group   UID	CW   0--	TSL Conductivity [S/m]	1.62
Conversion Factor	7.71	Phantom Section   TSL	Flat   HSL

## Hardware Setup

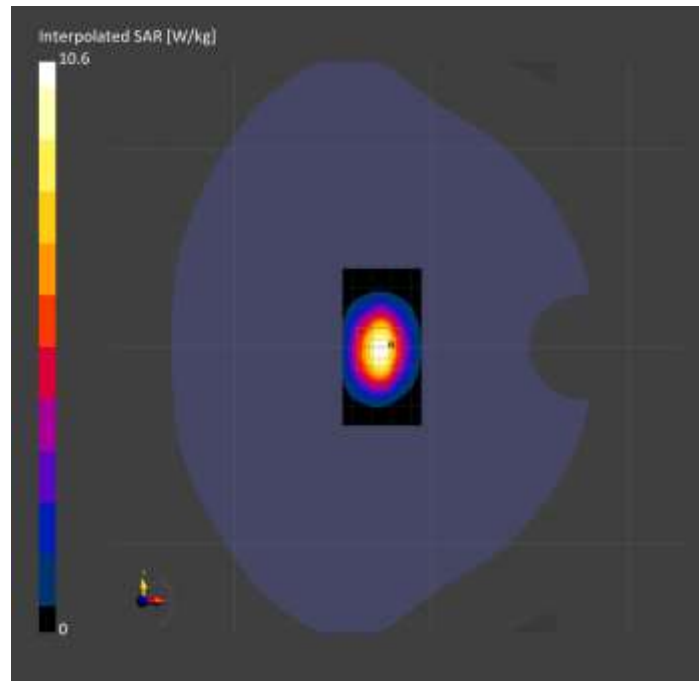
Probe   Calibration Date	EX3DV4 - SN7482   2023-04-18	Phantom	Twin-SAM V8.0 (30deg probe tilt)
DAE   Calibration Date	DAE4 Sn1380   2023-02-14	TSL Type	HBBL-600-10000
Software Version	16.2.4.2524		

## Scans Setup

	Area Scan	Zoom Scan
Grid Extents [mm]	40.0 x 80.0	30.0 x 30.0 x 30.0
Grid Steps [mm]	10.0 x 10.0	5.0 x 5.0 x 1.5
Sensor Surface [mm]	3.0	1.4
Graded Grid	N/A	Yes
M2/M1 [%]		80.3
Dist 3dB Peak [mm]		9.0

## Measurement Results

	Area Scan	Zoom Scan
psSAR1g [W/Kg]	5.25	5.22
psSAR10g [W/Kg]	2.52	2.52
Power Drift [dB]	N/A	-0.00



# System Performance Check Report for D2600V2 - SN1036

## Exposure Conditions

Frequency [MHz]   Channel Number	2600.000   0	TSL Permittivity	38.7
Group   UID	CW   0--	TSL Conductivity [S/m]	1.89
Conversion Factor	7.49	Phantom Section   TSL	Flat   HSL

## Hardware Setup

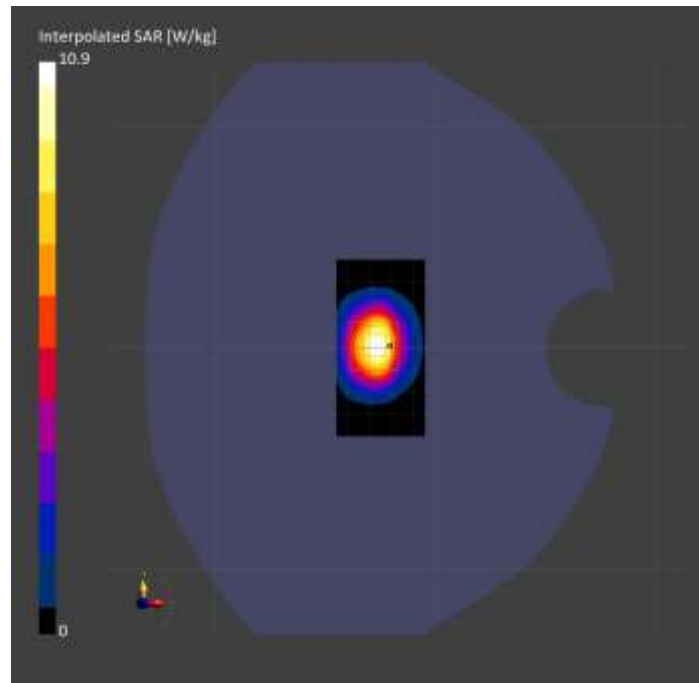
Probe   Calibration Date	EX3DV4 - SN7482   2023-04-18	Phantom	Twin-SAM V8.0 (30deg probe tilt)
DAE   Calibration Date	DAE4 Sn1380   2023-02-14	TSL Type	HBBL-600-10000
Software Version	16.2.4.2524		

## Scans Setup

	Area Scan	Zoom Scan
Grid Extents [mm]	40.0 x 80.0	30.0 x 30.0 x 30.0
Grid Steps [mm]	10.0 x 10.0	5.0 x 5.0 x 1.5
Sensor Surface [mm]	3.0	1.4
Graded Grid	N/A	Yes
M2/M1 [%]		78.5
Dist 3dB Peak [mm]		9.0

## Measurement Results

	Area Scan	Zoom Scan
psSAR1g [W/Kg]	5.19	5.17
psSAR10g [W/Kg]	2.39	2.40
Power Drift [dB]	N/A	-0.01



# System Performance Check Report for D3500V2 - SN1060

## Exposure Conditions

Frequency [MHz]   Channel Number	3500.000   0	TSL Permittivity	39.2
Group   UID	CW   0--	TSL Conductivity [S/m]	2.98
Conversion Factor	6.87	Phantom Section   TSL	Flat   HSL

## Hardware Setup

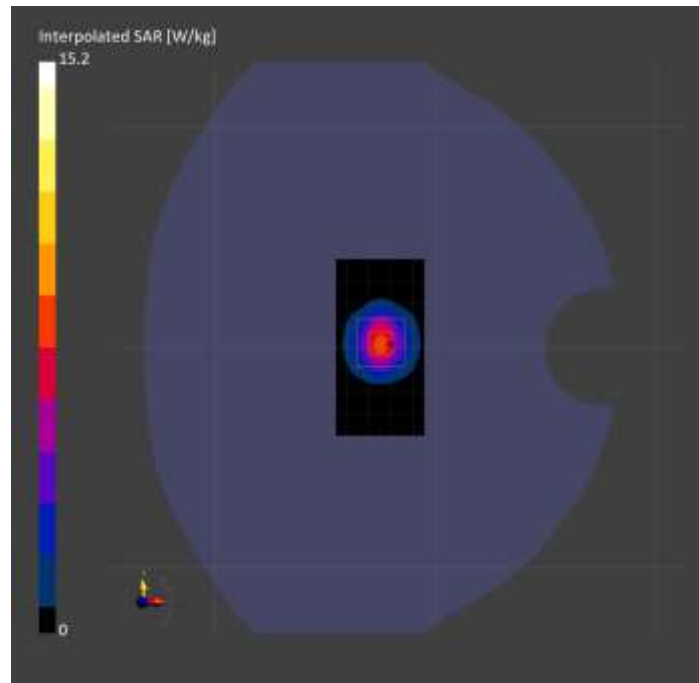
Probe   Calibration Date	EX3DV4 - SN7335   2023-01-26	Phantom	Twin-SAM V8.0 (30deg probe tilt)
DAE   Calibration Date	DAE4ip Sn1619   2023-04-18	TSL Type	HBBL-600-10000
Software Version	16.2.4.2524		

## Scans Setup

	Area Scan	Zoom Scan
Grid Extents [mm]	40.0 x 80.0	28.0 x 28.0 x 28.0
Grid Steps [mm]	10.0 x 10.0	5.0 x 5.0 x 1.4
Sensor Surface [mm]	3.0	1.4
Graded Grid	N/A	Yes
M2/M1 [%]		76.8
Dist 3dB Peak [mm]		8.3

## Measurement Results

	Area Scan	Zoom Scan
psSAR1g [W/Kg]	6.08	<b>6.09</b>
psSAR10g [W/Kg]	2.35	<b>2.36</b>
Power Drift [dB]	N/A	0.02



# System Performance Check Report for D3700V2 - SN1110

## Exposure Conditions

Frequency [MHz]   Channel Number	3700.000   0	TSL Permittivity	39.4
Group   UID	CW   0--	TSL Conductivity [S/m]	3.03
Conversion Factor	6.92	Phantom Section   TSL	Flat   HSL

## Hardware Setup

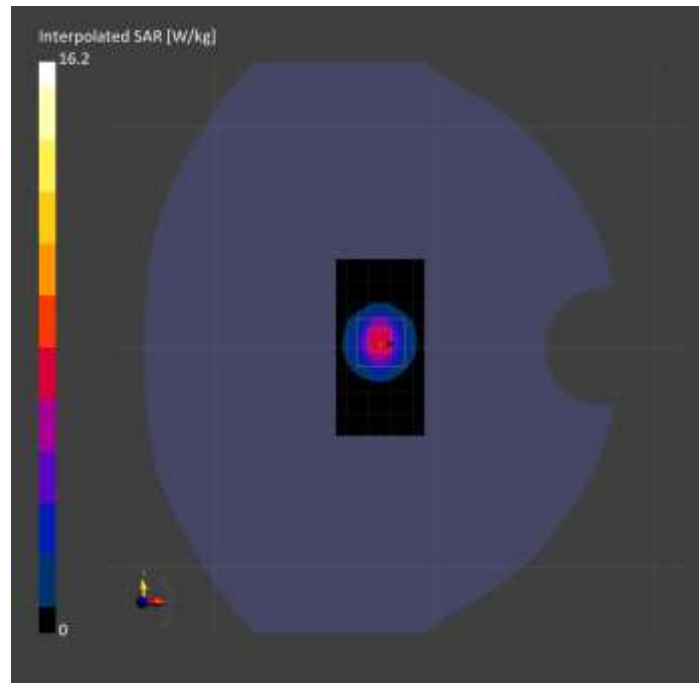
Probe   Calibration Date	EX3DV4 - SN7335   2023-01-26	Phantom	Twin-SAM V8.0 (30deg probe tilt)
DAE   Calibration Date	DAE4ip Sn1619   2023-04-18	TSL Type	HBBL-600-10000
Software Version	16.2.4.2524		

## Scans Setup

	Area Scan	Zoom Scan
Grid Extents [mm]	40.0 x 80.0	28.0 x 28.0 x 28.0
Grid Steps [mm]	10.0 x 10.0	5.0 x 5.0 x 1.4
Sensor Surface [mm]	3.0	1.4
Graded Grid	N/A	Yes
M2/M1 [%]		74.6
Dist 3dB Peak [mm]		8.1

## Measurement Results

	Area Scan	Zoom Scan
psSAR1g [W/Kg]	5.72	<b>6.04</b>
psSAR10g [W/Kg]	2.13	<b>2.26</b>
Power Drift [dB]	N/A	-0.00



# System Performance Check Report for D3900V2 - SN1093

## Exposure Conditions

Frequency [MHz]   Channel Number	3900.000   0	TSL Permittivity	37.1
Group   UID	CW   0--	TSL Conductivity [S/m]	3.45
Conversion Factor	6.15	Phantom Section   TSL	Flat   HSL

## Hardware Setup

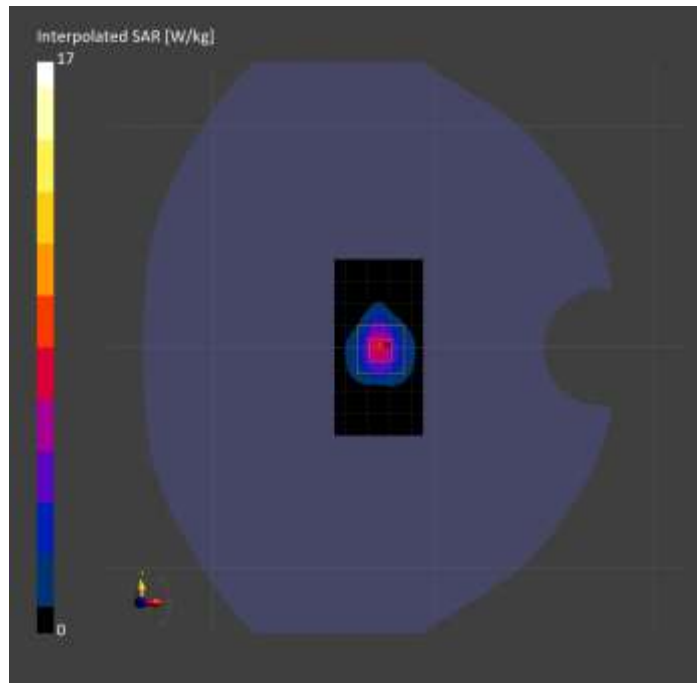
Probe   Calibration Date	EX3DV4 - SN7463   2023-04-19	Phantom	Twin-SAM V8.0 (30deg probe tilt)
DAE   Calibration Date	DAE4 Sn1673   2023-05-12	TSL Type	HBBL-600-10000
Software Version	16.2.4.2524		

## Scans Setup

	Area Scan	Zoom Scan
Grid Extents [mm]	40.0 x 80.0	28.0 x 28.0 x 28.0
Grid Steps [mm]	10.0 x 10.0	5.0 x 5.0 x 1.4
Sensor Surface [mm]	3.0	1.4
Graded Grid	N/A	Yes
M2/M1 [%]		71.2
Dist 3dB Peak [mm]		8.1

## Measurement Results

	Area Scan	Zoom Scan
psSAR1g [W/Kg]	5.60	<b>6.53</b>
psSAR10g [W/Kg]	1.98	<b>2.52</b>
Power Drift [dB]	N/A	0.16





# System Performance Check Report for D3500V2 - SN1011

## Exposure Conditions

Frequency [MHz]   Channel Number	3500.000   0	TSL Permittivity	37.6
Group   UID	CW   0--	TSL Conductivity [S/m]	2.93
Conversion Factor	6.21	Phantom Section   TSL	Flat   HSL

## Hardware Setup

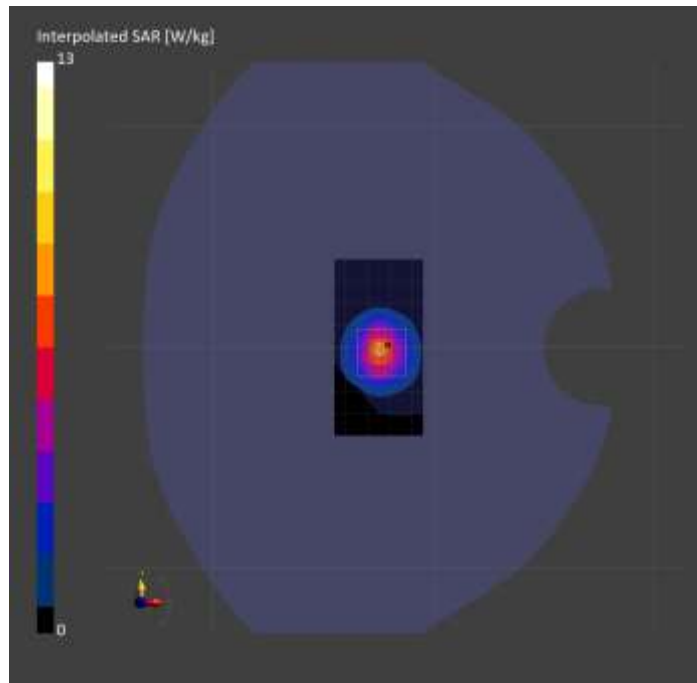
Probe   Calibration Date	EX3DV4 - SN7463   2023-04-19	Phantom	Twin-SAM V8.0 (30deg probe tilt)
DAE   Calibration Date	DAE4 Sn1673   2023-05-12	TSL Type	HBBL-600-10000
Software Version	16.2.4.2524		

## Scans Setup

	Area Scan	Zoom Scan
Grid Extents [mm]	40.0 x 80.0	28.0 x 28.0 x 28.0
Grid Steps [mm]	10.0 x 10.0	5.0 x 5.0 x 1.4
Sensor Surface [mm]	3.0	1.4
Graded Grid	N/A	Yes
M2/M1 [%]		84.2
Dist 3dB Peak [mm]		8.1

## Measurement Results

	Area Scan	Zoom Scan
psSAR1g [W/Kg]	5.81	<b>6.24</b>
psSAR10g [W/Kg]	2.26	<b>2.67</b>
Power Drift [dB]	N/A	-0.01



# System Performance Check Report for D4900V2 - SN1065

## Exposure Conditions

Frequency [MHz]   Channel Number	4900.000   0	TSL Permittivity	37.5
Group   UID	CW   0--	TSL Conductivity [S/m]	4.18
Conversion Factor	6.28	Phantom Section   TSL	Flat   HSL

## Hardware Setup

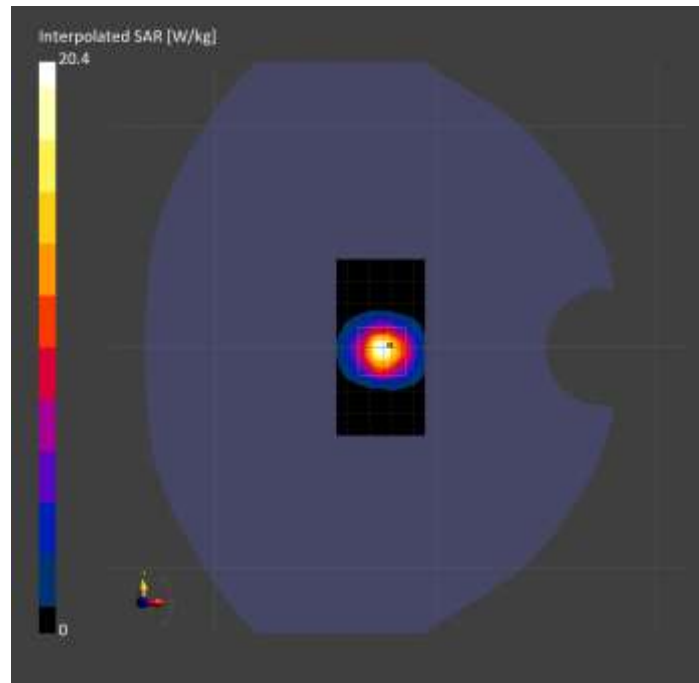
Probe   Calibration Date	EX3DV4 - SN7356   2023-03-17	Phantom	Twin-SAM V8.0 (30deg probe tilt)
DAE   Calibration Date	DAE4 Sn1798   2023-05-02	TSL Type	HBBL-600-10000
Software Version	16.2.4.2524		

## Scans Setup

	Area Scan	Zoom Scan
Grid Extents [mm]	40.0 x 80.0	25.0 x 25.0 x 25.0
Grid Steps [mm]	10.0 x 10.0	4.0 x 4.0 x 1.4
Sensor Surface [mm]	3.0	1.4
Graded Grid	N/A	Yes
M2/M1 [%]		69.4
Dist 3dB Peak [mm]		8.7

## Measurement Results

	Area Scan	Zoom Scan
psSAR1g [W/Kg]	6.09	6.35
psSAR10g [W/Kg]	2.00	2.11
Power Drift [dB]	N/A	-0.02



# System Performance Check Report for D3500V2 - SN1060

## Exposure Conditions

Frequency [MHz]   Channel Number	3500.000   0	TSL Permittivity	37.6
Group   UID	CW   0--	TSL Conductivity [S/m]	2.79
Conversion Factor	7.04	Phantom Section   TSL	Flat   HSL

## Hardware Setup

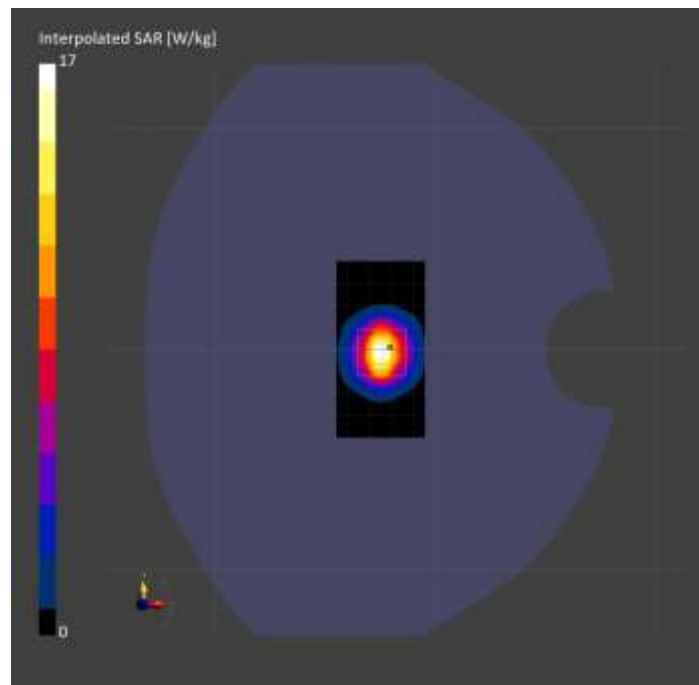
Probe   Calibration Date	EX3DV4 - SN7356   2023-03-17	Phantom	Twin-SAM V8.0 (30deg probe tilt)
DAE   Calibration Date	DAE4 Sn1798   2023-05-02	TSL Type	HBBL-600-10000
Software Version	16.2.4.2524		

## Scans Setup

	Area Scan	Zoom Scan
Grid Extents [mm]	40.0 x 80.0	28.0 x 28.0 x 28.0
Grid Steps [mm]	10.0 x 10.0	5.0 x 5.0 x 1.4
Sensor Surface [mm]	3.0	1.4
Graded Grid	N/A	Yes
M2/M1 [%]		71.0
Dist 3dB Peak [mm]		8.3

## Measurement Results

	Area Scan	Zoom Scan
psSAR1g [W/Kg]	6.04	<b>6.07</b>
psSAR10g [W/Kg]	2.30	<b>2.42</b>
Power Drift [dB]	N/A	0.17



# System Performance Check Report for D3700V2 - SN1110

## Exposure Conditions

Frequency [MHz]   Channel Number	3700.000   0	TSL Permittivity	37.2
Group   UID	CW   0--	TSL Conductivity [S/m]	2.97
Conversion Factor	7.06	Phantom Section   TSL	Flat   HSL

## Hardware Setup

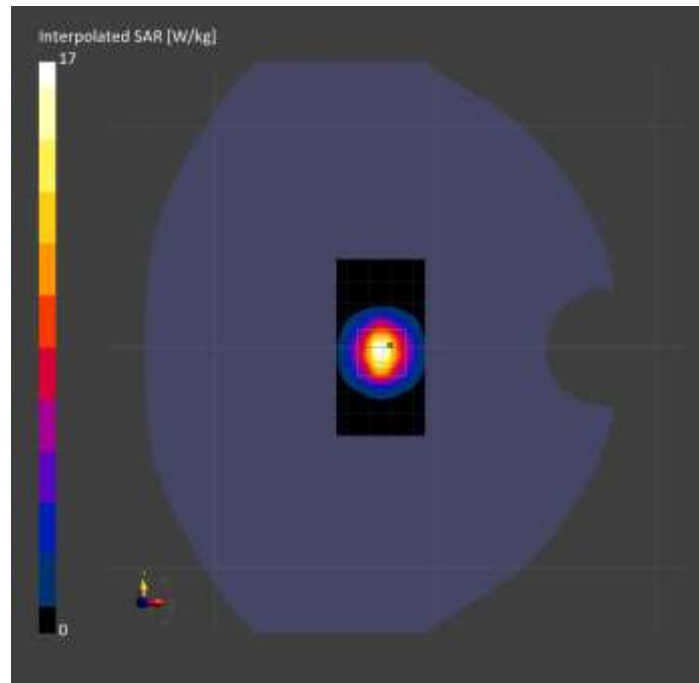
Probe   Calibration Date	EX3DV4 - SN7356   2023-03-17	Phantom	Twin-SAM V8.0 (30deg probe tilt)
DAE   Calibration Date	DAE4 Sn1798   2023-05-02	TSL Type	HBBL-600-10000
Software Version	16.2.4.2524		

## Scans Setup

	Area Scan	Zoom Scan
Grid Extents [mm]	40.0 x 80.0	28.0 x 28.0 x 28.0
Grid Steps [mm]	10.0 x 10.0	5.0 x 5.0 x 1.4
Sensor Surface [mm]	3.0	1.4
Graded Grid	N/A	Yes
M2/M1 [%]		70.7
Dist 3dB Peak [mm]		8.0

## Measurement Results

	Area Scan	Zoom Scan
psSAR1g [W/Kg]	5.79	5.93
psSAR10g [W/Kg]	2.15	2.27
Power Drift [dB]	N/A	-0.05



# System Performance Check Report for CLA-13 - SN1008

## Exposure Conditions

Frequency [MHz]   Channel Number	13.000   0	TSL Permittivity	55.7
Group   UID	CW   0--	TSL Conductivity [S/m]	0.718
Conversion Factor	19.03	Phantom Section   TSL	Flat   HSL

## Hardware Setup

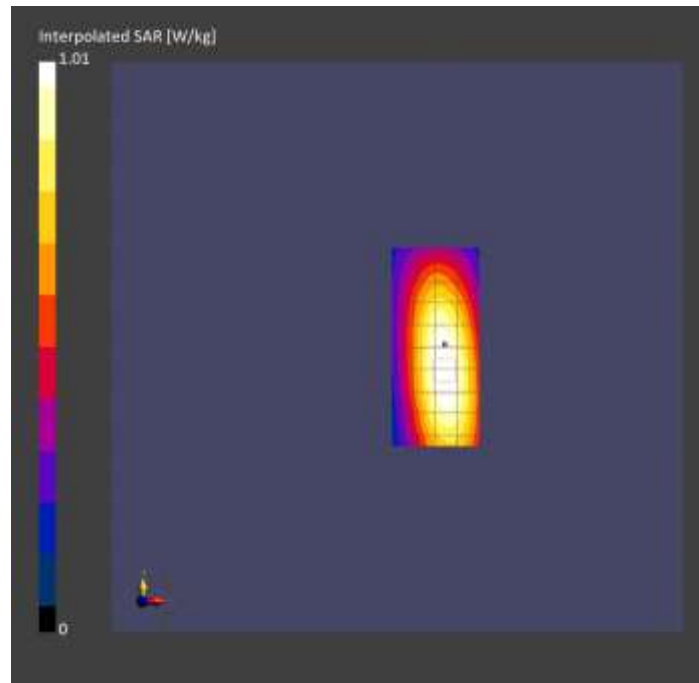
Probe   Calibration Date	EX3DV4 - SN3989   2023-01-26	Phantom	ELI V8.0 (20deg probe tilt)
DAE   Calibration Date	DAE4 Sn1257   2022-09-20	TSL Type	HBBL4-250V3
Software Version	16.2.4.2524		

## Scans Setup

	Area Scan	Zoom Scan
Grid Extents [mm]	40.0 x 90.0	30.0 x 30.0 x 30.0
Grid Steps [mm]	10.0 x 15.0	6.0 x 6.0 x 1.5
Sensor Surface [mm]	3.0	1.4
Graded Grid	N/A	Yes
M2/M1 [%]		75.4
Dist 3dB Peak [mm]		15.2

## Measurement Results

	Area Scan	Zoom Scan
psSAR1g [W/Kg]	0.531	<b>0.509</b>
psSAR10g [W/Kg]	0.431	<b>0.314</b>
Power Drift [dB]	N/A	-0.01



# System Performance Check Report for D3500V2 - SN1011

## Exposure Conditions

Frequency [MHz]   Channel Number	3500.000   0	TSL Permittivity	39.6
Group   UID	CW   0--	TSL Conductivity [S/m]	2.79
Conversion Factor	6.78	Phantom Section   TSL	Flat   HSL

## Hardware Setup

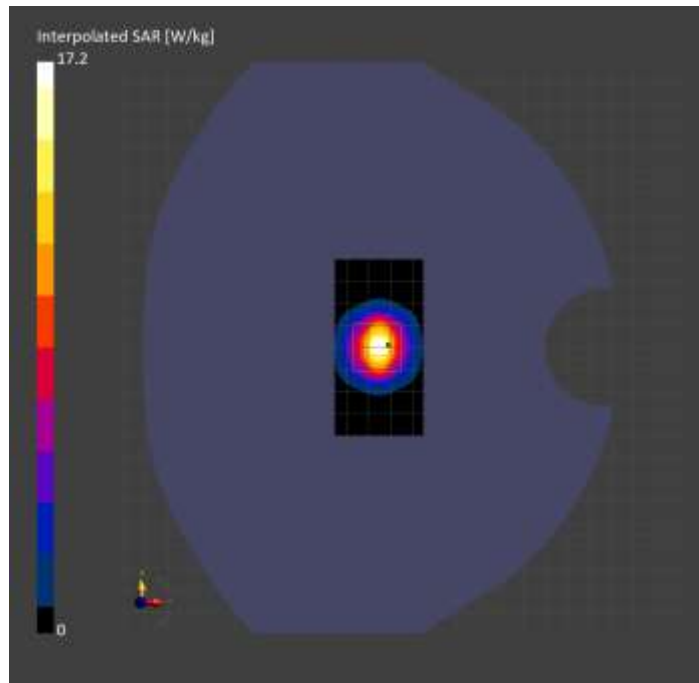
Probe   Calibration Date	EX3DV4 - SN3989   2023-01-26	Phantom	Twin-SAM V8.0 (30deg probe tilt)
DAE   Calibration Date	DAE4 Sn1547   2023-04-18	TSL Type	HBBL-600-10000
Software Version	16.2.4.2524		

## Scans Setup

	Area Scan	Zoom Scan
Grid Extents [mm]	40.0 x 80.0	28.0 x 28.0 x 28.0
Grid Steps [mm]	10.0 x 10.0	5.0 x 5.0 x 1.4
Sensor Surface [mm]	3.0	1.4
Graded Grid	N/A	Yes
M2/M1 [%]		75.8
Dist 3dB Peak [mm]		8.3

## Measurement Results

	Area Scan	Zoom Scan
psSAR1g [W/Kg]	6.61	6.79
psSAR10g [W/Kg]	2.53	2.66
Power Drift [dB]	N/A	-0.06



# System Performance Check Report for D835V2 - SN4d117

## Exposure Conditions

Frequency [MHz]   Channel Number	835.000   0	TSL Permittivity	43.2
Group   UID	CW   0--	TSL Conductivity [S/m]	0.878
Conversion Factor	7.83	Phantom Section   TSL	Flat   HSL

## Hardware Setup

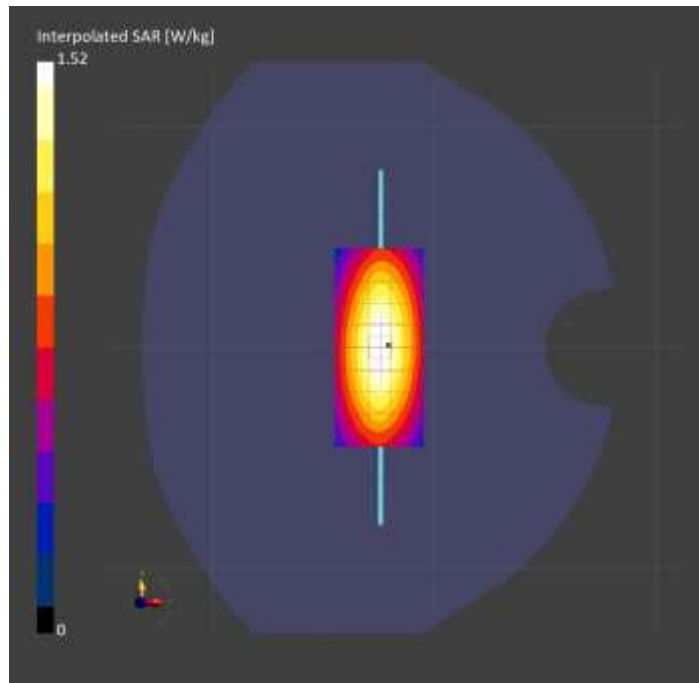
Probe   Calibration Date	EX3DV4 - SN3749   2023-01-27	Phantom	Twin-SAM V8.0 (30deg probe tilt)
DAE   Calibration Date	DAE4 Sn1784   2023-04-03	TSL Type	HBBL-600-10000
Software Version	16.2.4.2524		

## Scans Setup

	Area Scan	Zoom Scan
Grid Extents [mm]	40.0 x 90.0	30.0 x 30.0 x 30.0
Grid Steps [mm]	10.0 x 15.0	6.0 x 6.0 x 1.5
Sensor Surface [mm]	3.0	1.4
Graded Grid	N/A	Yes
M2/M1 [%]		88.6
Dist 3dB Peak [mm]		20.5

## Measurement Results

	Area Scan	Zoom Scan
psSAR1g [W/Kg]	1.03	<b>1.03</b>
psSAR10g [W/Kg]	0.677	<b>0.685</b>
Power Drift [dB]	N/A	-0.01



# System Performance Check Report for D2600V2 - SN1036

## Exposure Conditions

Frequency [MHz]   Channel Number	2600.000   0	TSL Permittivity	39.6
Group   UID	CW   0--	TSL Conductivity [S/m]	1.94
Conversion Factor	7.39	Phantom Section   TSL	Flat   HSL

## Hardware Setup

Probe   Calibration Date	EX3DV4 - SN7448   2023-02-14	Phantom	Twin-SAM V5.0 (30deg probe tilt)
DAE   Calibration Date	DAE4 Sn1472   2023-01-23	TSL Type	HBBL-600-10000
Software Version	16.2.4.2524		

## Scans Setup

	Area Scan	Zoom Scan
Grid Extents [mm]	40.0 x 80.0	30.0 x 30.0 x 30.0
Grid Steps [mm]	10.0 x 10.0	5.0 x 5.0 x 1.5
Sensor Surface [mm]	3.0	1.4
Graded Grid	N/A	Yes
M2/M1 [%]		79.9
Dist 3dB Peak [mm]		9.0

## Measurement Results

	Area Scan	Zoom Scan
psSAR1g [W/Kg]	5.90	<b>5.84</b>
psSAR10g [W/Kg]	2.65	<b>2.64</b>
Power Drift [dB]	N/A	0.00

