

# Measurement Report for Band n14: 5G NR (DFT-s-OFDM, 1 RB, 10 MHz, QPSK, 15 kHz) RBPosition:Mid AntennaCfg:SISO, EDGE RIGHT

## Exposure Conditions

Band	Band n14	TSL Permittivity	43.8
Frequency [MHz]   Channel Number	793.000   158600	TSL Conductivity [S/m]	0.857
Group   UID	5G NR FR1 FDD   10929-AAD	Phantom Section   TSL	Flat   HSL
Conversion Factor	10.62	Test Distance [mm]	5.00

## Hardware Setup

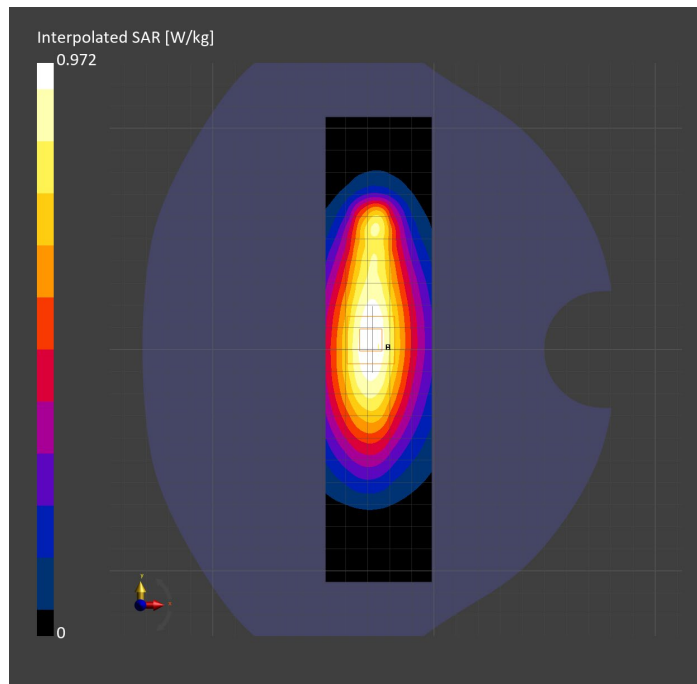
Probe   Calibration Date	EX3DV4 - SN7589   2023-04-18	Phantom	Twin-SAM V5.0 (30deg probe tilt)
DAE   Calibration Date	DAE4 Sn1544   2023-01-24	TSL Type	HBBL-600-10000
Software Version	16.2.4.2524		

## Scan Setup

	Area Scan	Zoom Scan
Grid Extents [mm]	48.0 x 210.0	30.0 x 30.0 x 30.0
Grid Steps [mm]	8.0 x 15.0	6.0 x 6.0 x 1.5
Sensor Surface [mm]	3.0	1.4
Graded Grid	N/A	Yes
M2/M1 [%]		83.8
Dist 3dB Peak [mm]		17.8

## Measurement Results

	Area Scan	Zoom Scan
psSAR1g [W/Kg]	0.575	<b>0.594</b>
psSAR10g [W/Kg]	0.383	<b>0.391</b>
Power Drift [dB]	N/A	-0.04



# Measurement Report for Band n14: 5G NR (DFT-s-OFDM, 1 RB, 10 MHz, QPSK, 15 kHz) RBPosition:Mid AntennaCfg:SISO, CHEEK

## Exposure Conditions

Band	Band n14	TSL Permittivity	39.9
Frequency [MHz]   Channel Number	793.000   158600	TSL Conductivity [S/m]	0.901
Group   UID	5G NR FR1 FDD   10929-AAD	Phantom Section   TSL	RightHead   HSL
Conversion Factor	8.93	Test Distance [mm]	0.00

## Hardware Setup

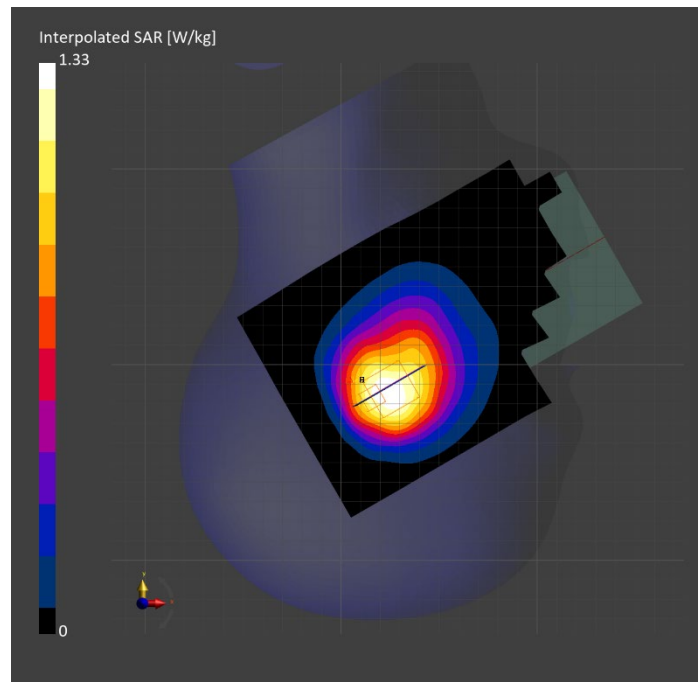
Probe   Calibration Date	EX3DV4 - SN7448   2023-02-14	Phantom	Twin-SAM V5.0 (30deg probe tilt)
DAE   Calibration Date	DAE4 Sn1472   2023-01-23	TSL Type	HBBL-600-10000
Software Version	16.2.4.2524		

## Scan Setup

	Area Scan	Zoom Scan
Grid Extents [mm]	120.0 x 210.0	30.0 x 30.0 x 30.0
Grid Steps [mm]	15.0 x 15.0	6.0 x 6.0 x 1.5
Sensor Surface [mm]	3.0	1.4
Graded Grid	N/A	Yes
M2/M1 [%]		75.5
Dist 3dB Peak [mm]		7.3

## Measurement Results

	Area Scan	Zoom Scan
psSAR1g [W/Kg]	0.644	<b>0.662</b>
psSAR10g [W/Kg]	0.434	<b>0.440</b>
Power Drift [dB]	N/A	0.01



# Measurement Report for Band n25: 5G NR (DFT-s-OFDM, 1 RB, 40 MHz, QPSK, 15 kHz) RBPosition:Mid AntennaCfg:SISO, CHEEK

## Exposure Conditions

Band	Band n25	TSL Permittivity	39.3
Frequency [MHz]   Channel Number	1882.500   376500	TSL Conductivity [S/m]	1.44
Group   UID	5G NR FR1 FDD   10934-AAC	Phantom Section   TSL	LeftHead   HSL
Conversion Factor	7.53	Test Distance [mm]	0.00

## Hardware Setup

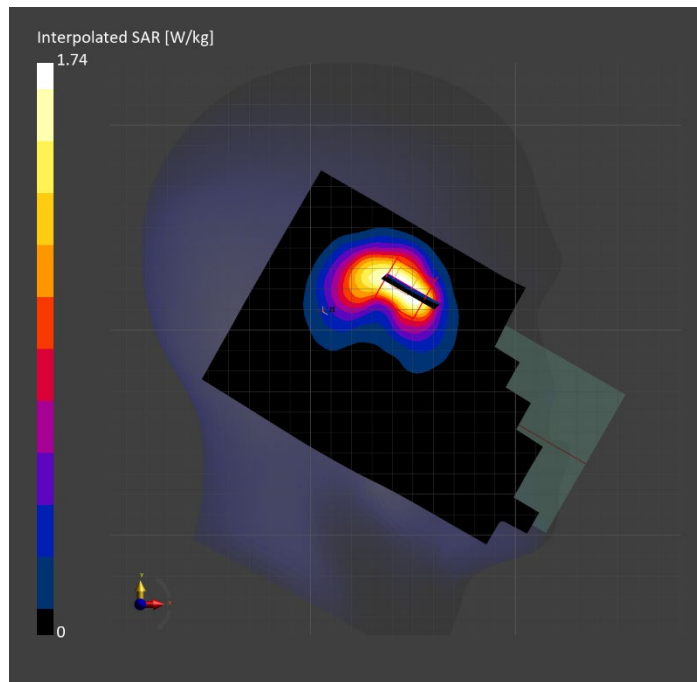
Probe   Calibration Date	EX3DV4 - SN7807   2023-04-11	Phantom	Twin-SAM V8.0 (30deg probe tilt)
DAE   Calibration Date	DAE4 Sn1799   2023-04-04	TSL Type	HBBL-600-10000
Software Version	16.2.4.2524		

## Scan Setup

	Area Scan	Zoom Scan
Grid Extents [mm]	120.0 x 210.0	30.0 x 30.0 x 30.0
Grid Steps [mm]	15.0 x 15.0	6.0 x 6.0 x 1.5
Sensor Surface [mm]	3.0	1.4
Graded Grid	N/A	Yes
M2/M1 [%]		75.9
Dist 3dB Peak [mm]		5.2

## Measurement Results

	Area Scan	Zoom Scan
psSAR1g [W/Kg]	0.535	<b>0.729</b>
psSAR10g [W/Kg]	0.295	<b>0.321</b>
Power Drift [dB]	N/A	0.03



# Measurement Report for Band n25: 5G NR (DFT-s-OFDM, 50% RB, 40 MHz, QPSK, 15 kHz) RBPosition:Mid AntennaCfg:SISO, BACK

## Exposure Conditions

Band	Band n25	TSL Permittivity	39.2
Frequency [MHz]   Channel Number	1882.500   376500	TSL Conductivity [S/m]	1.40
Group   UID	5G NR FR1 FDD   10942-AAC	Phantom Section   TSL	Flat   HSL
Conversion Factor	7.53	Test Distance [mm]	5.00

## Hardware Setup

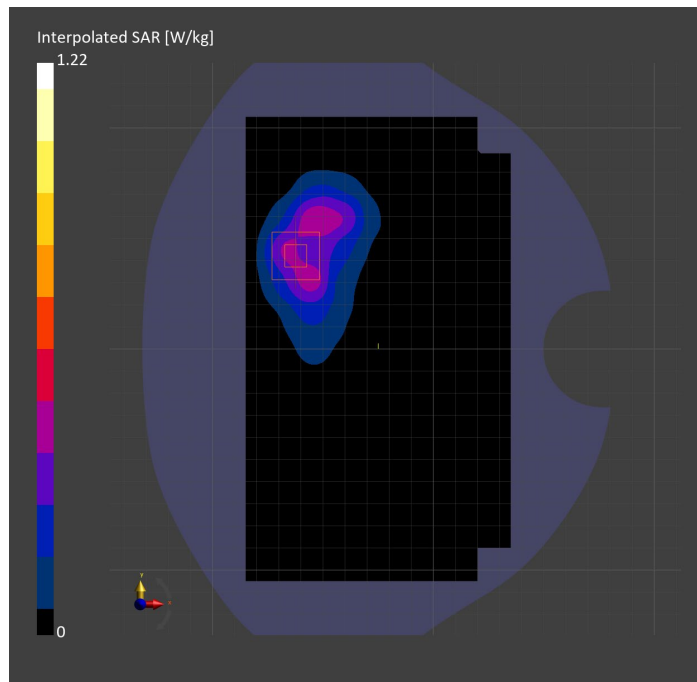
Probe   Calibration Date	EX3DV4 - SN7807   2023-04-11	Phantom	Twin-SAM V8.0 (30deg probe tilt)
DAE   Calibration Date	DAE4 Sn1799   2023-04-04	TSL Type	HBBL-600-10000
Software Version	16.2.4.2524		

## Scan Setup

	Area Scan	Zoom Scan
Grid Extents [mm]	120.0 x 210.0	30.0 x 30.0 x 30.0
Grid Steps [mm]	15.0 x 15.0	5.5 x 5.5 x 1.5
Sensor Surface [mm]	3.0	1.4
Graded Grid	N/A	Yes
M2/M1 [%]		80.3
Dist 3dB Peak [mm]		7.7

## Measurement Results

	Area Scan	Zoom Scan
psSAR1g [W/Kg]	0.393	<b>0.585</b>
psSAR10g [W/Kg]	0.223	<b>0.271</b>
Power Drift [dB]	N/A	-0.00



# Measurement Report for Band n25: 5G NR (DFT-s-OFDM, 1 RB, 40 MHz, QPSK, 15 kHz) RBPosition:Mid AntennaCfg:SISO, EDGE RIGHT

## Exposure Conditions

Band	Band n25	TSL Permittivity	39.3
Frequency [MHz]   Channel Number	1882.500   376500	TSL Conductivity [S/m]	1.44
Group   UID	5G NR FR1 FDD   10934-AAC	Phantom Section   TSL	Flat   HSL
Conversion Factor	7.53	Test Distance [mm]	5.00

## Hardware Setup

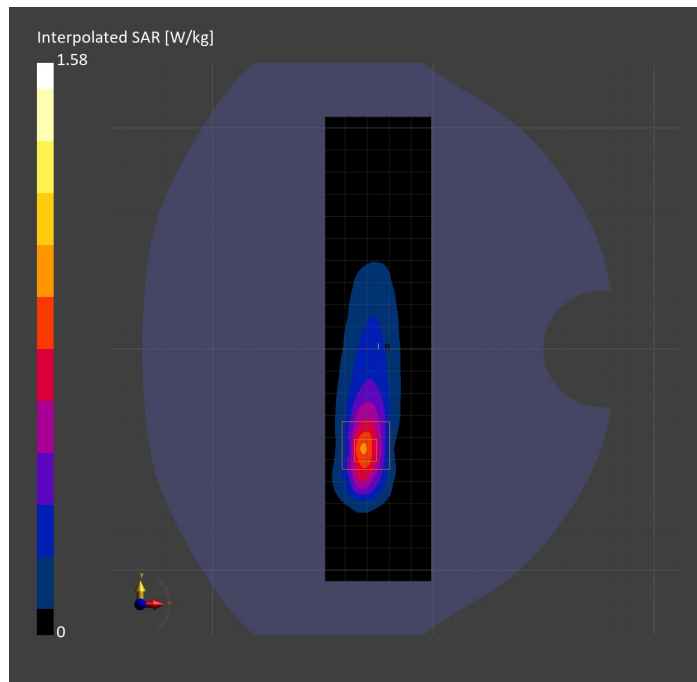
Probe   Calibration Date	EX3DV4 - SN7807   2023-04-11	Phantom	Twin-SAM V8.0 (30deg probe tilt)
DAE   Calibration Date	DAE4 Sn1799   2023-04-04	TSL Type	HBBL-600-10000
Software Version	16.2.4.2524		

## Scan Setup

	Area Scan	Zoom Scan
Grid Extents [mm]	48.0 x 210.0	30.0 x 30.0 x 30.0
Grid Steps [mm]	8.0 x 15.0	6.0 x 6.0 x 1.5
Sensor Surface [mm]	3.0	1.4
Graded Grid	N/A	Yes
M2/M1 [%]		78.4
Dist 3dB Peak [mm]		7.2

## Measurement Results

	Area Scan	Zoom Scan
psSAR1g [W/Kg]	0.712	<b>0.756</b>
psSAR10g [W/Kg]	0.331	<b>0.341</b>
Power Drift [dB]	N/A	-0.06



# Measurement Report for Band n26: 5G NR (DFT-s-OFDM, 1 RB, 20 MHz, QPSK, 15 kHz) RBPosition:Mid AntennaCfg:SISO, BACK

## Exposure Conditions

Band	Band n26	TSL Permittivity	43.0
Frequency [MHz]   Channel Number	831.500   166300	TSL Conductivity [S/m]	0.867
Group   UID	5G NR FR1 FDD   10931-AAC	Phantom Section   TSL	Flat   HSL
Conversion Factor	7.83	Test Distance [mm]	5.00

## Hardware Setup

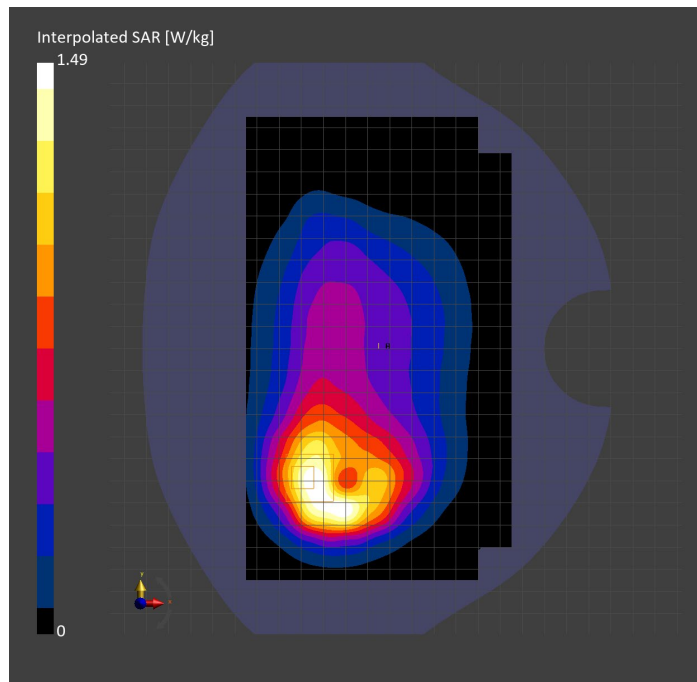
Probe   Calibration Date	EX3DV4 - SN3749   2023-01-27	Phantom	Twin-SAM V8.0 (30deg probe tilt)
DAE   Calibration Date	DAE4 Sn1357   2023-01-27	TSL Type	HBBL-600-10000
Software Version	16.2.4.2524		

## Scan Setup

	Area Scan	Zoom Scan
Grid Extents [mm]	120.0 x 210.0	30.0 x 30.0 x 30.0
Grid Steps [mm]	15.0 x 15.0	6.0 x 6.0 x 1.5
Sensor Surface [mm]	3.0	1.4
Graded Grid	N/A	Yes
M2/M1 [%]		77.3
Dist 3dB Peak [mm]		9.6

## Measurement Results

	Area Scan	Zoom Scan
psSAR1g [W/Kg]	0.622	<b>0.691</b>
psSAR10g [W/Kg]	0.404	<b>0.377</b>
Power Drift [dB]	N/A	-0.03



# Measurement Report for Band n26: 5G NR (DFT-s-OFDM, 50% RB, 20 MHz, QPSK, 15 kHz) RBPosition:Mid AntennaCfg:SISO, EDGE RIGHT

## Exposure Conditions

Band	Band n26	TSL Permittivity	43.0
Frequency [MHz]   Channel Number	831.500   166300	TSL Conductivity [S/m]	0.867
Group   UID	5G NR FR1 FDD   10939-AAC	Phantom Section   TSL	Flat   HSL
Conversion Factor	7.83	Test Distance [mm]	5.00

## Hardware Setup

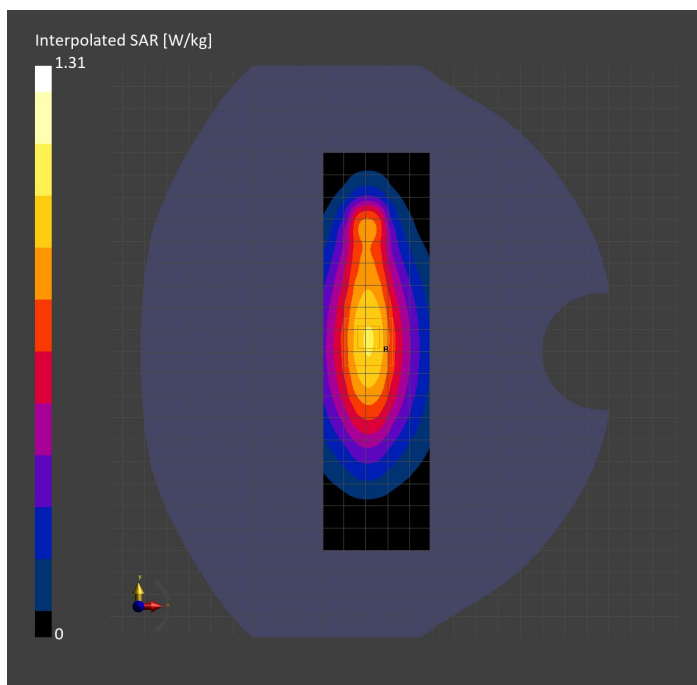
Probe   Calibration Date	EX3DV4 - SN3749   2023-01-27	Phantom	Twin-SAM V8.0 (30deg probe tilt)
DAE   Calibration Date	DAE4 Sn1357   2023-01-27	TSL Type	HBBL-600-10000
Software Version	16.2.4.2524		

## Scan Setup

	Area Scan	Zoom Scan
Grid Extents [mm]	48.0 x 180.0	30.0 x 30.0 x 30.0
Grid Steps [mm]	8.0 x 15.0	6.0 x 6.0 x 1.5
Sensor Surface [mm]	3.0	1.4
Graded Grid	N/A	Yes
M2/M1 [%]		87.7
Dist 3dB Peak [mm]		15.2

## Measurement Results

	Area Scan	Zoom Scan
psSAR1g [W/Kg]	0.864	<b>0.855</b>
psSAR10g [W/Kg]	0.565	<b>0.564</b>
Power Drift [dB]	N/A	-0.01



# Measurement Report for Band n26: 5G NR (DFT-s-OFDM, 50% RB, 20 MHz, QPSK, 15 kHz) RBPosition:Mid AntennaCfg:SISO, CHEEK

## Exposure Conditions

Band	Band n26	TSL Permittivity	40.8
Frequency [MHz]   Channel Number	831.500   166300	TSL Conductivity [S/m]	0.881
Group   UID	5G NR FR1 FDD   10939-AAC	Phantom Section   TSL	RightHead   HSL
Conversion Factor	8.76	Test Distance [mm]	0.00

## Hardware Setup

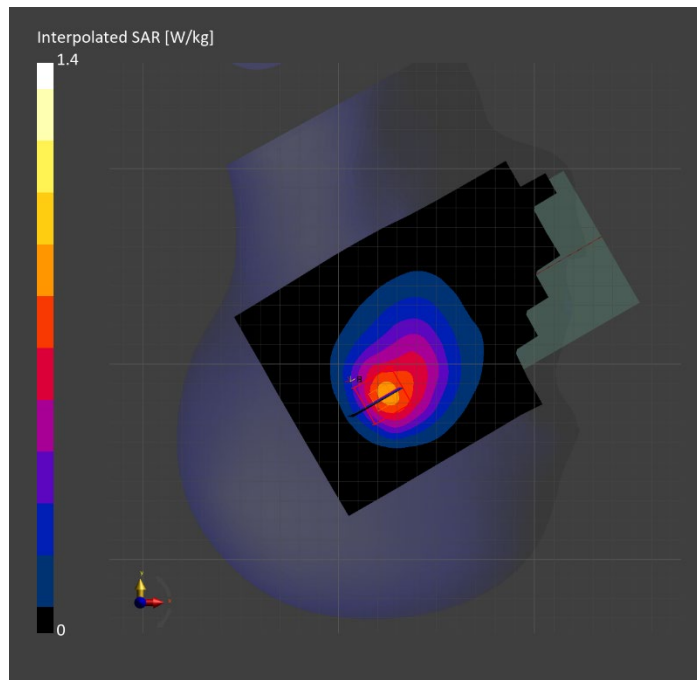
Probe   Calibration Date	EX3DV4 - SN7806   2023-04-04	Phantom	Twin-SAM V8.0 (30deg probe tilt)
DAE   Calibration Date	DAE4 Sn1784   2023-04-03	TSL Type	HBBL-600-10000
Software Version	16.2.4.2524		

## Scan Setup

	Area Scan	Zoom Scan
Grid Extents [mm]	120.0 x 210.0	30.0 x 30.0 x 30.0
Grid Steps [mm]	15.0 x 15.0	6.0 x 6.0 x 1.5
Sensor Surface [mm]	3.0	1.4
Graded Grid	N/A	Yes
M2/M1 [%]		73.5
Dist 3dB Peak [mm]		7.7

## Measurement Results

	Area Scan	Zoom Scan
psSAR1g [W/Kg]	0.746	<b>0.739</b>
psSAR10g [W/Kg]	0.481	<b>0.463</b>
Power Drift [dB]	N/A	-0.03





# Measurement Report for Band n30: 5G NR (DFT-s-OFDM, 50% RB, 10 MHz, QPSK, 15 kHz) RBPosition:Mid AntennaCfg:SISO, EDGE RIGHT

## Exposure Conditions

Band	Band n30	TSL Permittivity	39.5
Frequency [MHz]   Channel Number	2310.000   462000	TSL Conductivity [S/m]	1.66
Group   UID	5G NR FR1 FDD   10937-AAD	Phantom Section   TSL	Flat   HSL
Conversion Factor	7.71	Test Distance [mm]	5.00

## Hardware Setup

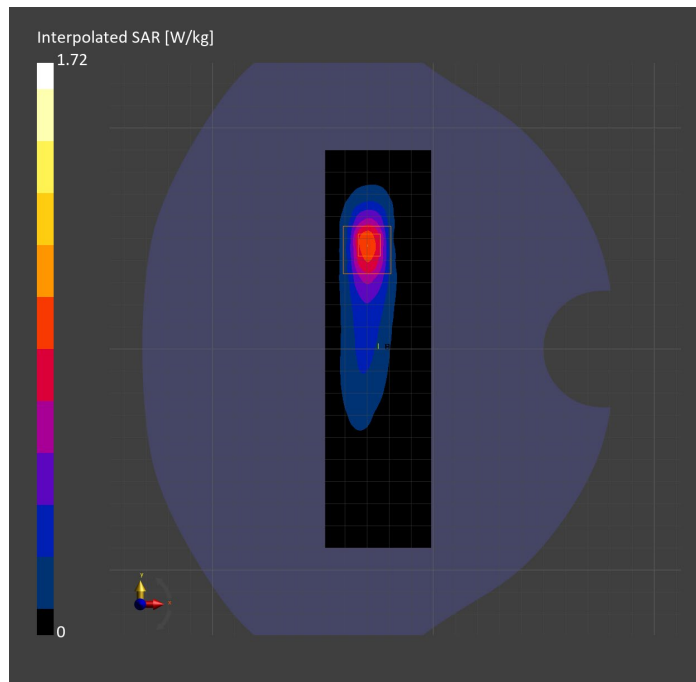
Probe   Calibration Date	EX3DV4 - SN7482   2023-04-18	Phantom	Twin-SAM V8.0 (30deg probe tilt)
DAE   Calibration Date	DAE4 Sn1380   2023-02-14	TSL Type	HBBL-600-10000
Software Version	16.2.4.2448		

## Scan Setup

	Area Scan	Zoom Scan
Grid Extents [mm]	48.0 x 180.0	30.0 x 30.0 x 30.0
Grid Steps [mm]	8.0 x 10.0	5.0 x 5.0 x 1.5
Sensor Surface [mm]	3.0	1.4
Graded Grid	N/A	Yes
M2/M1 [%]		78.6
Dist 3dB Peak [mm]		6.0

## Measurement Results

	Area Scan	Zoom Scan
psSAR1g [W/Kg]	0.744	<b>0.748</b>
psSAR10g [W/Kg]	0.320	<b>0.315</b>
Power Drift [dB]	N/A	-0.04



# Measurement Report for Band n30: 5G NR (DFT-s-OFDM, 50% RB, 10 MHz, QPSK, 15 kHz) RBPosition:Mid AntennaCfg:SISO, CHEEK

## Exposure Conditions

Band	Band n30	TSL Permittivity	39.5
Frequency [MHz]   Channel Number	2310.000   462000	TSL Conductivity [S/m]	1.66
Group   UID	5G NR FR1 FDD   10937-AAD	Phantom Section   TSL	RightHead   HSL
Conversion Factor	7.71	Test Distance [mm]	0.00

## Hardware Setup

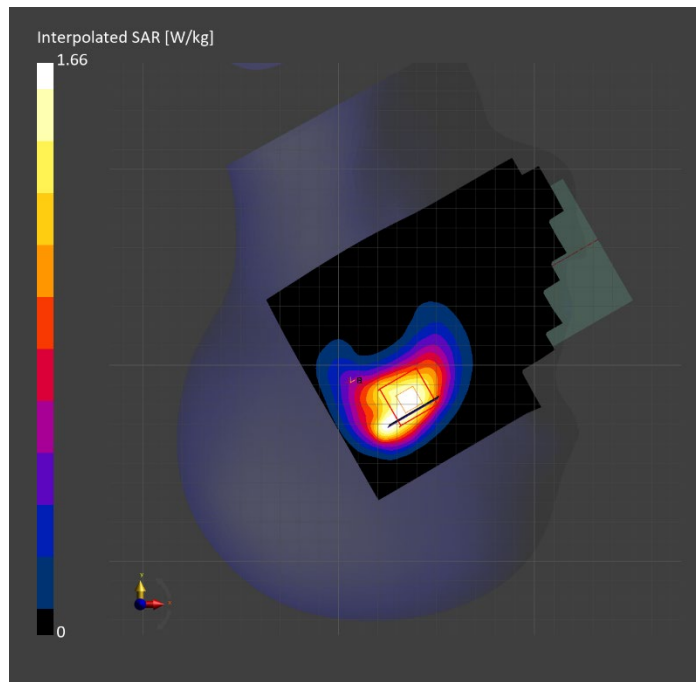
Probe   Calibration Date	EX3DV4 - SN7482   2023-04-18	Phantom	Twin-SAM V8.0 (30deg probe tilt)
DAE   Calibration Date	DAE4 Sn1380   2023-02-14	TSL Type	HBBL-600-10000
Software Version	16.2.4.2448		

## Scan Setup

	Area Scan	Zoom Scan
Grid Extents [mm]	120.0 x 180.0	30.0 x 30.0 x 30.0
Grid Steps [mm]	10.0 x 10.0	5.0 x 5.0 x 1.5
Sensor Surface [mm]	3.0	1.4
Graded Grid	N/A	Yes
M2/M1 [%]		77.7
Dist 3dB Peak [mm]		8.0

## Measurement Results

	Area Scan	Zoom Scan
psSAR1g [W/Kg]	0.843	<b>0.871</b>
psSAR10g [W/Kg]	0.474	<b>0.499</b>
Power Drift [dB]	N/A	-0.05



# Measurement Report for Band n30: 5G NR (DFT-s-OFDM, 50% RB, 10 MHz, QPSK, 15 kHz) RBPosition:Mid AntennaCfg:SISO, BACK

## Exposure Conditions

Band	Band n30	TSL Permittivity	39.5
Frequency [MHz]   Channel Number	2310.000   462000	TSL Conductivity [S/m]	1.66
Group   UID	5G NR FR1 FDD   10937-AAD	Phantom Section   TSL	Flat   HSL
Conversion Factor	7.71	Test Distance [mm]	5.00

## Hardware Setup

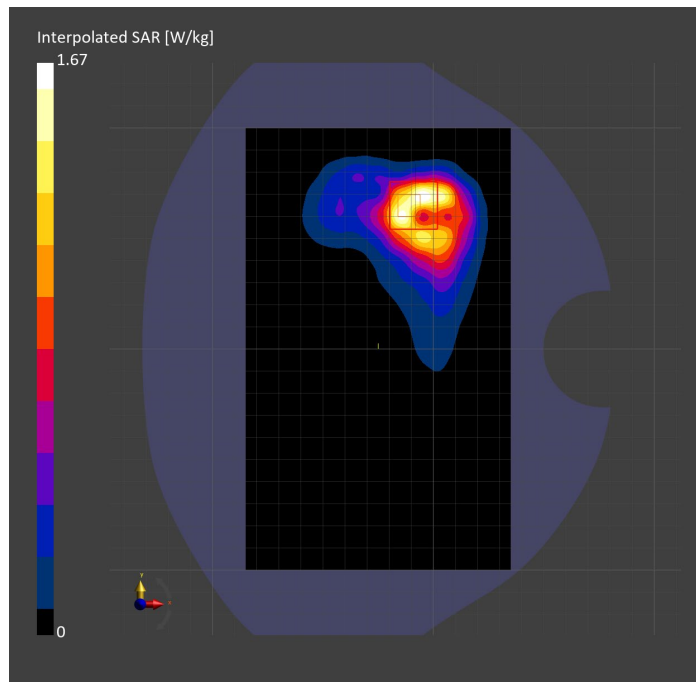
Probe   Calibration Date	EX3DV4 - SN7482   2023-04-18	Phantom	Twin-SAM V8.0 (30deg probe tilt)
DAE   Calibration Date	DAE4 Sn1380   2023-02-14	TSL Type	HBBL-600-10000
Software Version	16.2.4.2448		

## Scan Setup

	Area Scan	Zoom Scan
Grid Extents [mm]	120.0 x 200.0	30.0 x 30.0 x 30.0
Grid Steps [mm]	10.0 x 10.0	5.0 x 5.0 x 1.5
Sensor Surface [mm]	3.0	1.4
Graded Grid	N/A	Yes
M2/M1 [%]		77.2
Dist 3dB Peak [mm]		6.8

## Measurement Results

	Area Scan	Zoom Scan
psSAR1g [W/Kg]	0.627	<b>0.710</b>
psSAR10g [W/Kg]	0.339	<b>0.309</b>
Power Drift [dB]	N/A	0.12



# Measurement Report for Band n41: 5G NR (DFT-s-OFDM, 1 RB, 100 MHz, QPSK, 30 kHz) RBPosition:Mid AntennaCfg:SISO, BACK

## Exposure Conditions

Band	Band n41	TSL Permittivity	37.8
Frequency [MHz]   Channel Number	2592.990   518598	TSL Conductivity [S/m]	1.89
Group   UID	5G NR FR1 TDD   10866-AAF	Phantom Section   TSL	Flat   HSL
Conversion Factor	7.33	Test Distance [mm]	5.00

## Hardware Setup

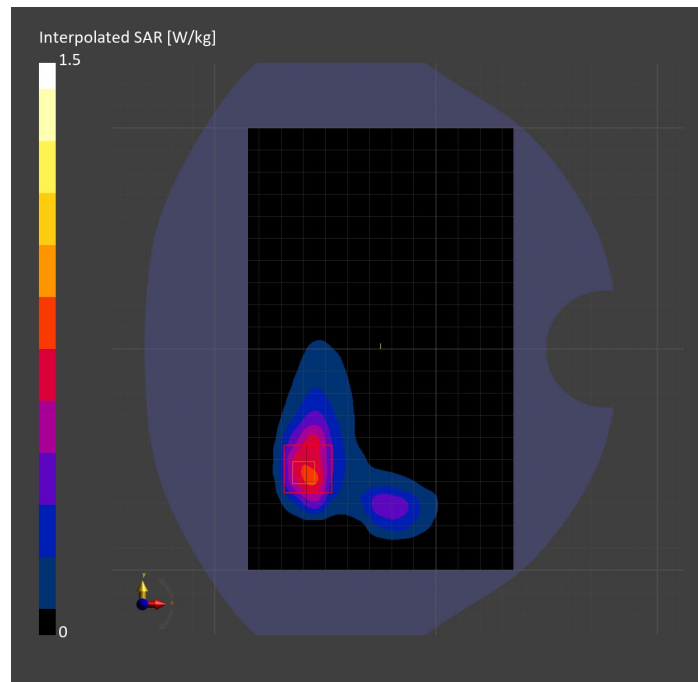
Probe   Calibration Date	EX3DV4 - SN7808   2023-04-18	Phantom	Twin-SAM V8.0 (30deg probe tilt)
DAE   Calibration Date	DAE4 Sn1796   2023-04-03	TSL Type	HBBL-600-10000
Software Version	16.2.4.2524		

## Scan Setup

	Area Scan	Zoom Scan
Grid Extents [mm]	120.0 x 200.0	30.0 x 30.0 x 30.0
Grid Steps [mm]	10.0 x 10.0	5.0 x 5.0 x 1.5
Sensor Surface [mm]	3.0	1.4
Graded Grid	N/A	Yes
M2/M1 [%]		77.2
Dist 3dB Peak [mm]		7.7

## Measurement Results

	Area Scan	Zoom Scan
psSAR1g [W/Kg]	0.626	<b>0.657</b>
psSAR10g [W/Kg]	0.306	<b>0.296</b>
Power Drift [dB]	N/A	-0.00



# Measurement Report for Band n41: 5G NR (DFT-s-OFDM, 50% RB, 100 MHz, QPSK, 30 kHz) RBPosition:Mid AntennaCfg:SISO, CHEEK

## Exposure Conditions

<b>Band</b>	Band n41	<b>TSL Permittivity</b>	37.6
<b>Frequency [MHz]   Channel Number</b>	2592.990   518598	<b>TSL Conductivity [S/m]</b>	1.94
<b>Group   UID</b>	5G NR FR1 TDD   10917-AAD	<b>Phantom Section   TSL</b>	LeftHead   HSL
<b>Conversion Factor</b>	7.32	<b>Test Distance [mm]</b>	0.00

## Hardware Setup

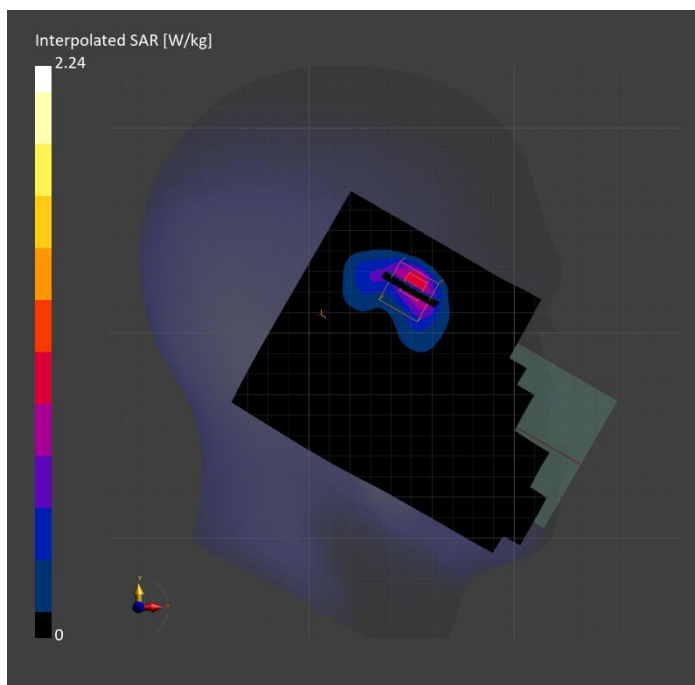
<b>Probe   Calibration Date</b>	EX3DV4 - SN3885   2022-09-20	<b>Phantom</b>	Twin-SAM V5.0 (30deg probe tilt)
<b>DAE   Calibration Date</b>	DAE4 Sn1548   2023-02-14	<b>TSL Type</b>	HBBL-600-10000
<b>Software Version</b>	16.2.4.2524		

## Scan Setup

	Area Scan	Zoom Scan
<b>Grid Extents [mm]</b>	120.0 x 180.0	30.0 x 30.0 x 30.0
<b>Grid Steps [mm]</b>	10.0 x 10.0	5.0 x 5.0 x 1.5
<b>Sensor Surface [mm]</b>	3.0	1.4
<b>Graded Grid</b>	N/A	Yes
<b>M2/M1 [%]</b>		75.4
<b>Dist 3dB Peak [mm]</b>		6.0

## Measurement Results

	Area Scan	Zoom Scan
<b>psSAR1g [W/Kg]</b>	0.785	<b>0.882</b>
<b>psSAR10g [W/Kg]</b>	0.359	<b>0.356</b>
<b>Power Drift [dB]</b>	N/A	-0.02



# Measurement Report for Band n41: 5G NR (DFT-s-OFDM, 1 RB, 100 MHz, QPSK, 30 kHz) RBPosition:Mid AntennaCfg:SISO, EDGE RIGHT

## Exposure Conditions

Band	Band n41	TSL Permittivity	37.6
Frequency [MHz]   Channel Number	2592.990   518598	TSL Conductivity [S/m]	1.94
Group   UID	5G NR FR1 TDD   10866-AAF	Phantom Section   TSL	Flat   HSL
Conversion Factor	7.32	Test Distance [mm]	5.00

## Hardware Setup

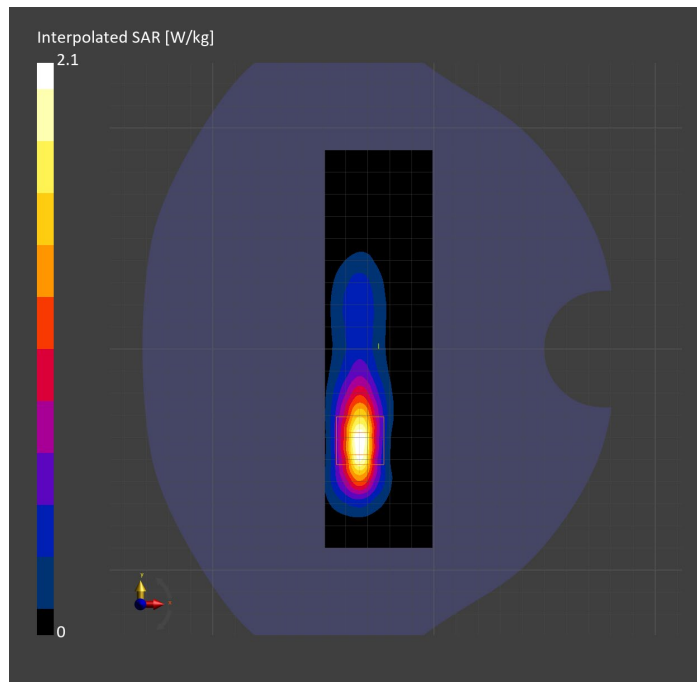
Probe   Calibration Date	EX3DV4 - SN3885   2022-09-20	Phantom	Twin-SAM V5.0 (30deg probe tilt)
DAE   Calibration Date	DAE4 Sn1548   2023-02-14	TSL Type	HBBL-600-10000
Software Version	16.2.4.2524		

## Scan Setup

	Area Scan	Zoom Scan
Grid Extents [mm]	48.6 x 180.0	30.0 x 30.0 x 30.0
Grid Steps [mm]	8.1 x 10.0	5.0 x 5.0 x 1.5
Sensor Surface [mm]	3.0	1.4
Graded Grid	N/A	Yes
M2/M1 [%]		73.7
Dist 3dB Peak [mm]		7.0

## Measurement Results

	Area Scan	Zoom Scan
psSAR1g [W/Kg]	0.815	<b>0.838</b>
psSAR10g [W/Kg]	0.345	<b>0.346</b>
Power Drift [dB]	N/A	-0.17



# Measurement Report for Band n48: 5G NR (DFT-s-OFDM, 1 RB, 100 MHz, QPSK, 30 kHz) RBPosition:Mid AntennaCfg:SISO, TILT

## Exposure Conditions

Band	Band n48	TSL Permittivity	39.5
Frequency [MHz]   Channel Number	3643.315   642888	TSL Conductivity [S/m]	2.91
Group   UID	5G NR FR1 TDD   10866-AAF	Phantom Section   TSL	LeftHead   HSL
Conversion Factor	6.66	Test Distance [mm]	0.00

## Hardware Setup

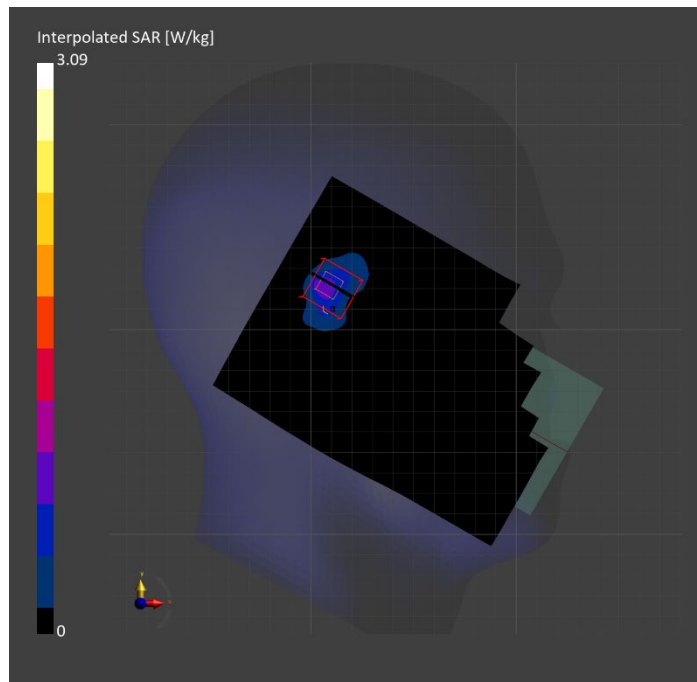
Probe   Calibration Date	EX3DV4 - SN3990   2023-02-17	Phantom	Twin-SAM V5.0 (30deg probe tilt)
DAE   Calibration Date	DAE4 Sn1545   2023-02-14	TSL Type	HBBL-600-10000
Software Version	16.2.4.2524		

## Scan Setup

	Area Scan	Zoom Scan
Grid Extents [mm]	120.0 x 160.0	30.0 x 30.0 x 28.0
Grid Steps [mm]	10.0 x 10.0	5.0 x 5.0 x 1.4
Sensor Surface [mm]	3.0	1.4
Graded Grid	N/A	Yes
M2/M1 [%]		70.3
Dist 3dB Peak [mm]		4.2

## Measurement Results

	Area Scan	Zoom Scan
psSAR1g [W/Kg]	0.645	<b>0.930</b>
psSAR10g [W/Kg]	0.251	<b>0.278</b>
Power Drift [dB]	N/A	0.01



# Measurement Report for Band n48: 5G NR (DFT-s-OFDM, 1 RB, 40 MHz, QPSK, 30 kHz) RBPosition:Mid AntennaCfg:SISO, BACK

## Exposure Conditions

Band	Band n48	TSL Permittivity	38.2
Frequency [MHz]   Channel Number	3643.315   642888	TSL Conductivity [S/m]	2.97
Group   UID	5G NR FR1 TDD   10903-AAD	Phantom Section   TSL	Flat   HSL
Conversion Factor	6.66	Test Distance [mm]	5.00

## Hardware Setup

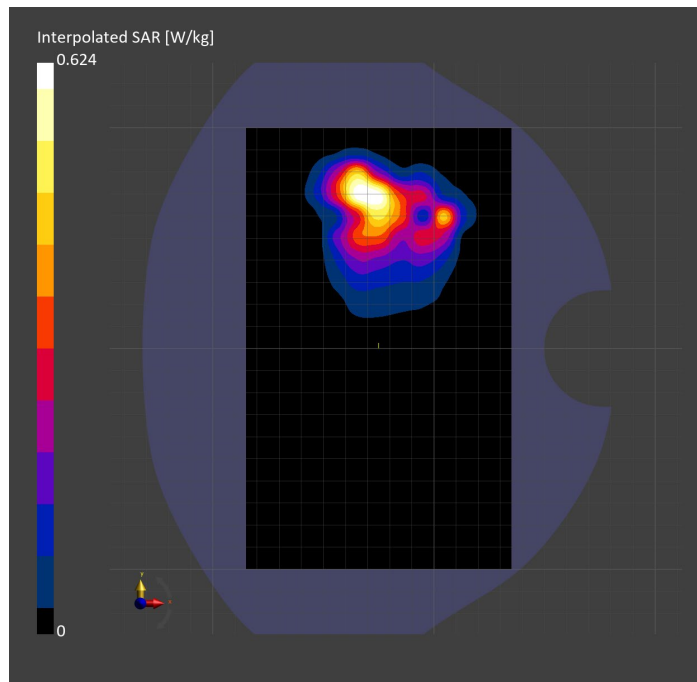
Probe   Calibration Date	EX3DV4 - SN3990   2023-02-17	Phantom	Twin-SAM V5.0 (30deg probe tilt)
DAE   Calibration Date	DAE4 Sn1545   2023-02-14	TSL Type	HBBL-600-10000
Software Version	16.2.4.2524		

## Scan Setup

	Area Scan	Zoom Scan
Grid Extents [mm]	120.0 x 200.0	28.0 x 28.0 x 28.0
Grid Steps [mm]	10.0 x 10.0	4.9 x 4.9 x 1.4
Sensor Surface [mm]	3.0	1.4
Graded Grid	N/A	Yes
M2/M1 [%]		75.1
Dist 3dB Peak [mm]		5.9

## Measurement Results

	Area Scan	Zoom Scan
psSAR1g [W/Kg]	0.468	<b>0.542</b>
psSAR10g [W/Kg]	0.201	<b>0.199</b>
Power Drift [dB]	N/A	-0.09





# Measurement Report for Band n48: 5G NR (DFT-s-OFDM, 1 RB, 40 MHz, QPSK, 30 kHz) RBPosition:Mid AntennaCfg:SISO, EDGE TOP

## Exposure Conditions

Band	Band n48	TSL Permittivity	39.2
Frequency [MHz]   Channel Number	3643.315   642888	TSL Conductivity [S/m]	2.94
Group   UID	5G NR FR1 TDD   10903-AAD	Phantom Section   TSL	Flat   HSL
Conversion Factor	6.94	Test Distance [mm]	5.00

## Hardware Setup

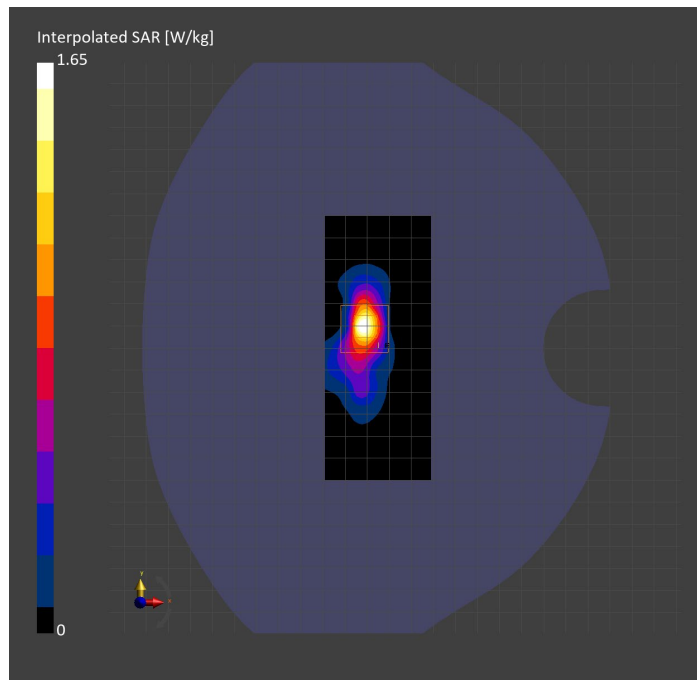
Probe   Calibration Date	EX3DV4 - SN3989   2023-01-26	Phantom	Twin-SAM V8.0 (30deg probe tilt)
DAE   Calibration Date	DAE4 Sn1257   2022-09-20	TSL Type	HBBL-600-10000
Software Version	16.2.4.2524		

## Scan Setup

	Area Scan	Zoom Scan
Grid Extents [mm]	48.0 x 120.0	30.0 x 30.0 x 28.0
Grid Steps [mm]	8.0 x 10.0	5.0 x 5.0 x 1.4
Sensor Surface [mm]	3.0	1.4
Graded Grid	N/A	Yes
M2/M1 [%]		77.3
Dist 3dB Peak [mm]		5.9

## Measurement Results

	Area Scan	Zoom Scan
psSAR1g [W/Kg]	0.555	<b>0.586</b>
psSAR10g [W/Kg]	0.184	<b>0.188</b>
Power Drift [dB]	N/A	-0.01



# Measurement Report for Band n53: 5G NR (DFT-s-OFDM, 1 RB, 10 MHz, QPSK, 30 kHz) RBPosition:Mid AntennaCfg:SISO, EDGE RIGHT

## Exposure Conditions

Band	Band n53	TSL Permittivity	38.6
Frequency [MHz]   Channel Number	2489.200   497840	TSL Conductivity [S/m]	1.89
Group   UID	5G NR FR1 TDD   10898-AAC	Phantom Section   TSL	Flat   HSL
Conversion Factor	7.33	Test Distance [mm]	5.00

## Hardware Setup

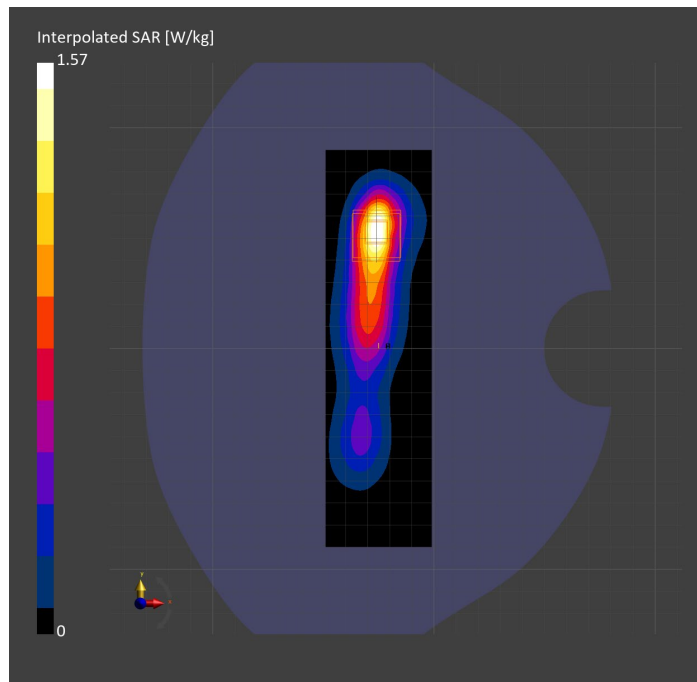
Probe   Calibration Date	EX3DV4 - SN3772   2023-02-13	Phantom	Twin-SAM V8.0 (30deg probe tilt)
DAE   Calibration Date	DAE4 Sn1359   2023-01-24	TSL Type	HBBL-600-10000
Software Version	16.2.4.2524		

## Scan Setup

	Area Scan	Zoom Scan
Grid Extents [mm]	48.0 x 180.0	30.0 x 30.0 x 30.0
Grid Steps [mm]	8.0 x 10.0	5.0 x 5.0 x 1.5
Sensor Surface [mm]	3.0	1.4
Graded Grid	N/A	Yes
M2/M1 [%]		79.3
Dist 3dB Peak [mm]		7.7

## Measurement Results

	Area Scan	Zoom Scan
psSAR1g [W/Kg]	0.731	<b>0.717</b>
psSAR10g [W/Kg]	0.326	<b>0.313</b>
Power Drift [dB]	N/A	-0.09



# Measurement Report for Band n53: 5G NR (DFT-s-OFDM, 50% RB, 10 MHz, QPSK, 30 kHz) RBPosition:Mid AntennaCfg:SISO, TILT

## Exposure Conditions

<b>Band</b>	Band n53	<b>TSL Permittivity</b>	38.6
<b>Frequency [MHz]   Channel Number</b>	2489.200   497840	<b>TSL Conductivity [S/m]</b>	1.89
<b>Group   UID</b>	5G NR FR1 TDD   10908-AAC	<b>Phantom Section   TSL</b>	LeftHead   HSL
<b>Conversion Factor</b>	7.33	<b>Test Distance [mm]</b>	0.00

## Hardware Setup

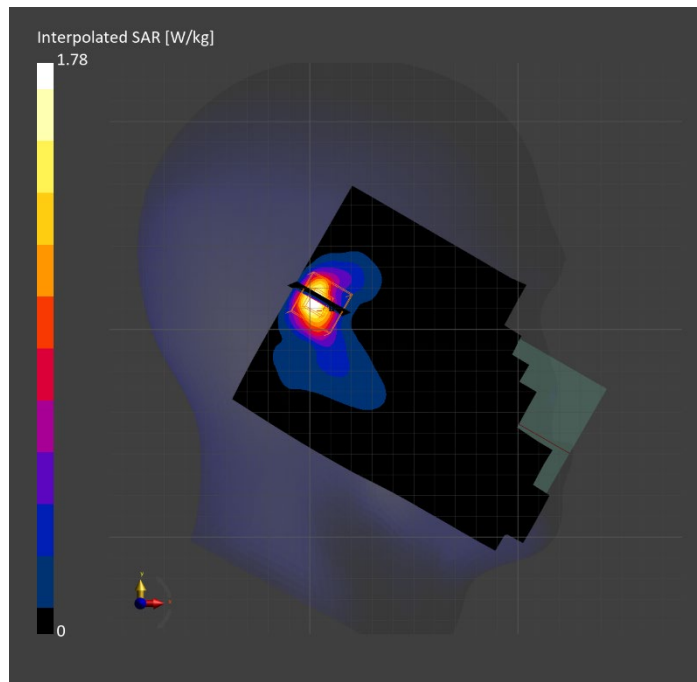
<b>Probe   Calibration Date</b>	EX3DV4 - SN3772   2023-02-13	<b>Phantom</b>	Twin-SAM V8.0 (30deg probe tilt)
<b>DAE   Calibration Date</b>	DAE4 Sn1359   2023-01-24	<b>TSL Type</b>	HBBL-600-10000
<b>Software Version</b>	16.2.4.2524		

## Scan Setup

	Area Scan	Zoom Scan
<b>Grid Extents [mm]</b>	120.0 x 180.0	30.0 x 30.0 x 30.0
<b>Grid Steps [mm]</b>	10.0 x 10.0	5.0 x 5.0 x 1.5
<b>Sensor Surface [mm]</b>	3.0	1.4
<b>Graded Grid</b>	N/A	Yes
<b>M2/M1 [%]</b>		82.1
<b>Dist 3dB Peak [mm]</b>		6.1

## Measurement Results

	Area Scan	Zoom Scan
<b>psSAR1g [W/Kg]</b>	0.689	<b>0.800</b>
<b>psSAR10g [W/Kg]</b>	0.298	<b>0.308</b>
<b>Power Drift [dB]</b>	N/A	-0.01



# Measurement Report for Band n53: 5G NR (DFT-s-OFDM, 1 RB, 10 MHz, QPSK, 30 kHz) RBPosition:Mid AntennaCfg:SISO, BACK

## Exposure Conditions

Band	Band n53	TSL Permittivity	38.6
Frequency [MHz]   Channel Number	2489.200   497840	TSL Conductivity [S/m]	1.89
Group   UID	5G NR FR1 TDD   10898-AAC	Phantom Section   TSL	Flat   HSL
Conversion Factor	7.33	Test Distance [mm]	5.00

## Hardware Setup

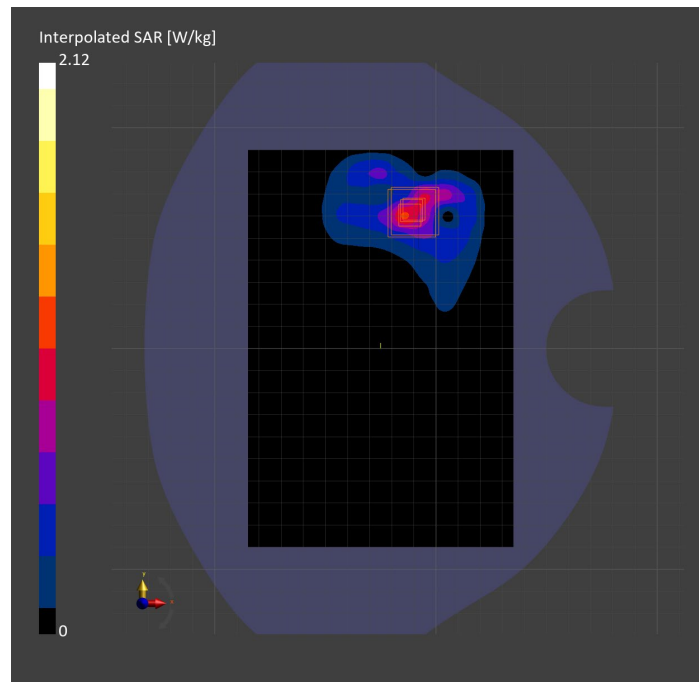
Probe   Calibration Date	EX3DV4 - SN3772   2023-02-13	Phantom	Twin-SAM V8.0 (30deg probe tilt)
DAE   Calibration Date	DAE4 Sn1359   2023-01-24	TSL Type	HBBL-600-10000
Software Version	16.2.4.2524		

## Scan Setup

	Area Scan	Zoom Scan	Secondary Zoom Scan
Grid Extents [mm]	120.0 x 180.0	30.0 x 30.0 x 30.0	30.0 x 30.0 x 30.0
Grid Steps [mm]	10.0 x 10.0	5.0 x 5.0 x 1.5	5.0 x 5.0 x 1.5
Sensor Surface [mm]	3.0	1.4	1.4
Graded Grid	N/A	Yes	Yes
M2/M1 [%]		77.6	78.1
Dist 3dB Peak [mm]		6.5	6.5

## Measurement Results

	Area Scan	Zoom Scan	Secondary Zoom Scan
psSAR1g [W/Kg]	0.790	<b>0.903</b>	<b>0.904</b>
psSAR10g [W/Kg]	0.368	<b>0.365</b>	<b>0.365</b>
Power Drift [dB]	N/A	-0.48	0.39



# Measurement Report for Band n66: 5G NR (DFT-s-OFDM, 50% RB, 40 MHz, QPSK, 15 kHz) RBPosition:Mid AntennaCfg:SISO, TILT

## Exposure Conditions

<b>Band</b>	Band n66	<b>TSL Permittivity</b>	39.2
<b>Frequency [MHz]   Channel Number</b>	1745.000   349000	<b>TSL Conductivity [S/m]</b>	1.32
<b>Group   UID</b>	5G NR FR1 FDD   10942-AAC	<b>Phantom Section   TSL</b>	RightHead   HSL
<b>Conversion Factor</b>	8.66	<b>Test Distance [mm]</b>	0.00

## Hardware Setup

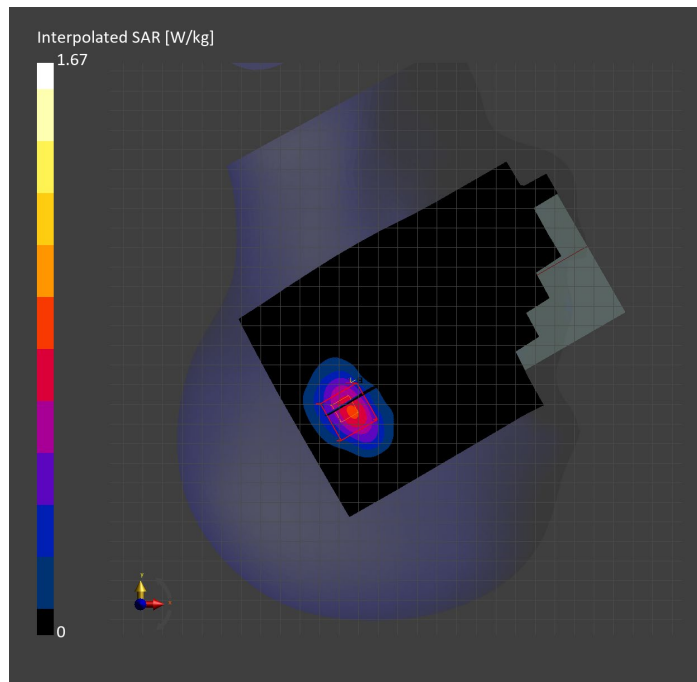
<b>Probe   Calibration Date</b>	EX3DV4 - SN7569   2023-04-18	<b>Phantom</b>	Twin-SAM V8.0 (30deg probe tilt)
<b>DAE   Calibration Date</b>	DAE4 Sn1547   2023-04-18	<b>TSL Type</b>	HBBL-600-10000
<b>Software Version</b>	16.2.4.2524		

## Scan Setup

	Area Scan	Zoom Scan
<b>Grid Extents [mm]</b>	120.0 x 210.0	30.0 x 30.0 x 30.0
<b>Grid Steps [mm]</b>	15.0 x 15.0	6.0 x 6.0 x 1.5
<b>Sensor Surface [mm]</b>	3.0	1.4
<b>Graded Grid</b>	N/A	Yes
<b>M2/M1 [%]</b>		78.9
<b>Dist 3dB Peak [mm]</b>		7.4

## Measurement Results

	Area Scan	Zoom Scan
<b>psSAR1g [W/Kg]</b>	0.686	<b>0.770</b>
<b>psSAR10g [W/Kg]</b>	0.353	<b>0.354</b>
<b>Power Drift [dB]</b>	N/A	-0.17



# Measurement Report for Band n66: 5G NR (DFT-s-OFDM, 50% RB, 40 MHz, QPSK, 15 kHz) RBPosition:Mid AntennaCfg:SISO, EDGE TOP

## Exposure Conditions

Band	Band n66	TSL Permittivity	39.2
Frequency [MHz]   Channel Number	1745.000   349000	TSL Conductivity [S/m]	1.32
Group   UID	5G NR FR1 FDD   10942-AAC	Phantom Section   TSL	Flat   HSL
Conversion Factor	8.66	Test Distance [mm]	5.00

## Hardware Setup

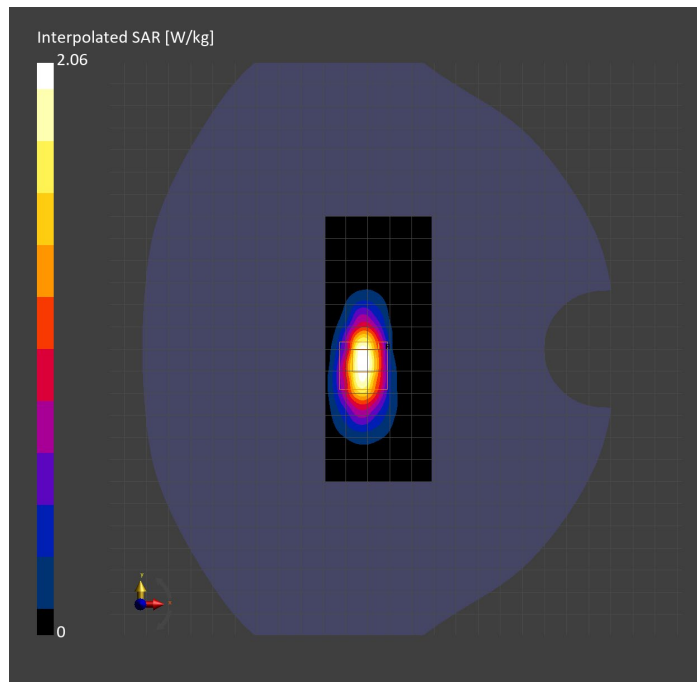
Probe   Calibration Date	EX3DV4 - SN7569   2023-04-18	Phantom	Twin-SAM V8.0 (30deg probe tilt)
DAE   Calibration Date	DAE4 Sn1547   2023-04-18	TSL Type	HBBL-600-10000
Software Version	16.2.4.2524		

## Scan Setup

	Area Scan	Zoom Scan
Grid Extents [mm]	48.0 x 120.0	30.0 x 30.0 x 30.0
Grid Steps [mm]	8.0 x 15.0	6.0 x 6.0 x 1.5
Sensor Surface [mm]	3.0	1.4
Graded Grid	N/A	Yes
M2/M1 [%]		71.4
Dist 3dB Peak [mm]		7.2

## Measurement Results

	Area Scan	Zoom Scan
psSAR1g [W/Kg]	0.843	<b>0.885</b>
psSAR10g [W/Kg]	0.397	<b>0.400</b>
Power Drift [dB]	N/A	0.08



# Measurement Report for Band n66: 5G NR (DFT-s-OFDM, 50% RB, 40 MHz, QPSK, 15 kHz) RBPosition:Mid AntennaCfg:SISO, BACK

## Exposure Conditions

Band	Band n66	TSL Permittivity	39.2
Frequency [MHz]   Channel Number	1745.000   349000	TSL Conductivity [S/m]	1.32
Group   UID	5G NR FR1 FDD   10942-AAC	Phantom Section   TSL	Flat   HSL
Conversion Factor	8.66	Test Distance [mm]	5.00

## Hardware Setup

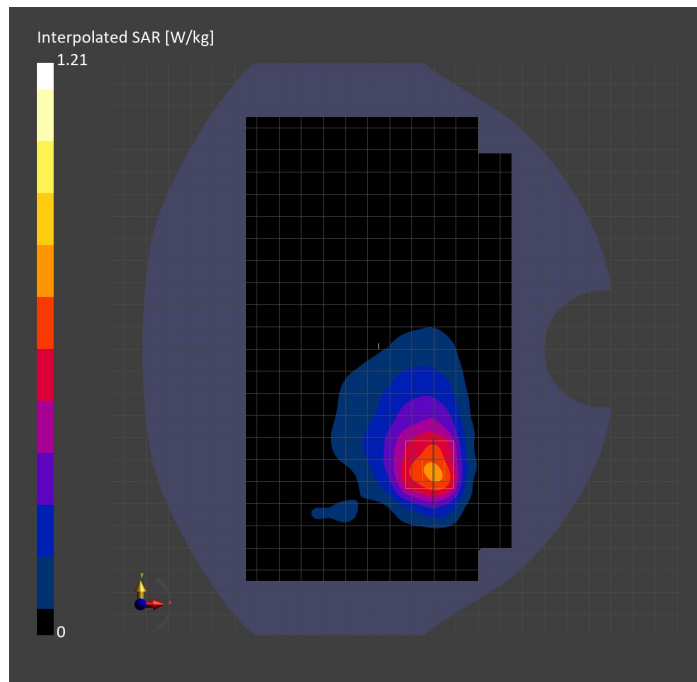
Probe   Calibration Date	EX3DV4 - SN7569   2023-04-18	Phantom	Twin-SAM V8.0 (30deg probe tilt)
DAE   Calibration Date	DAE4 Sn1547   2023-04-18	TSL Type	HBBL-600-10000
Software Version	16.2.4.2524		

## Scan Setup

	Area Scan	Zoom Scan
Grid Extents [mm]	120.0 x 210.0	30.0 x 30.0 x 30.0
Grid Steps [mm]	15.0 x 15.0	6.0 x 6.0 x 1.5
Sensor Surface [mm]	3.0	1.4
Graded Grid	N/A	Yes
M2/M1 [%]		79.7
Dist 3dB Peak [mm]		9.9

## Measurement Results

	Area Scan	Zoom Scan
psSAR1g [W/Kg]	0.625	<b>0.623</b>
psSAR10g [W/Kg]	0.356	<b>0.349</b>
Power Drift [dB]	N/A	0.00



# Measurement Report for Band n70: 5G NR (DFT-s-OFDM, 1 RB, 15 MHz, QPSK, 15 kHz) RBPosition:Mid AntennaCfg:SISO, EDGE TOP

## Exposure Conditions

Band	Band n70	TSL Permittivity	39.2
Frequency [MHz]   Channel Number	1702.500   340500	TSL Conductivity [S/m]	1.29
Group   UID	5G NR FR1 FDD   10930-AAC	Phantom Section   TSL	Flat   HSL
Conversion Factor	8.66	Test Distance [mm]	5.00

## Hardware Setup

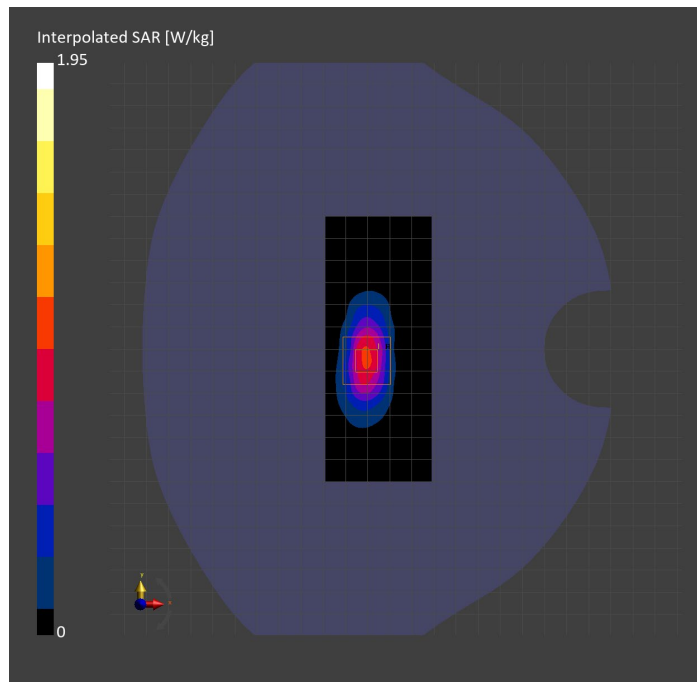
Probe   Calibration Date	EX3DV4 - SN7569   2023-04-18	Phantom	Twin-SAM V8.0 (30deg probe tilt)
DAE   Calibration Date	DAE4 Sn1547   2023-04-18	TSL Type	HBBL-600-10000
Software Version	16.2.4.2524		

## Scan Setup

	Area Scan	Zoom Scan
Grid Extents [mm]	48.0 x 120.0	30.0 x 30.0 x 30.0
Grid Steps [mm]	8.0 x 15.0	6.0 x 6.0 x 1.5
Sensor Surface [mm]	3.0	1.4
Graded Grid	N/A	Yes
M2/M1 [%]		72.0
Dist 3dB Peak [mm]		7.2

## Measurement Results

	Area Scan	Zoom Scan
psSAR1g [W/Kg]	0.808	<b>0.863</b>
psSAR10g [W/Kg]	0.386	<b>0.393</b>
Power Drift [dB]	N/A	-0.13





# Measurement Report for Band n70: 5G NR (DFT-s-OFDM, 50% RB, 15 MHz, QPSK, 15 kHz) RBPosition:Mid AntennaCfg:SISO, BACK

## Exposure Conditions

Band	Band n70	TSL Permittivity	39.2
Frequency [MHz]   Channel Number	1702.500   340500	TSL Conductivity [S/m]	1.29
Group   UID	5G NR FR1 FDD   10938-AAC	Phantom Section   TSL	Flat   HSL
Conversion Factor	8.66	Test Distance [mm]	5.00

## Hardware Setup

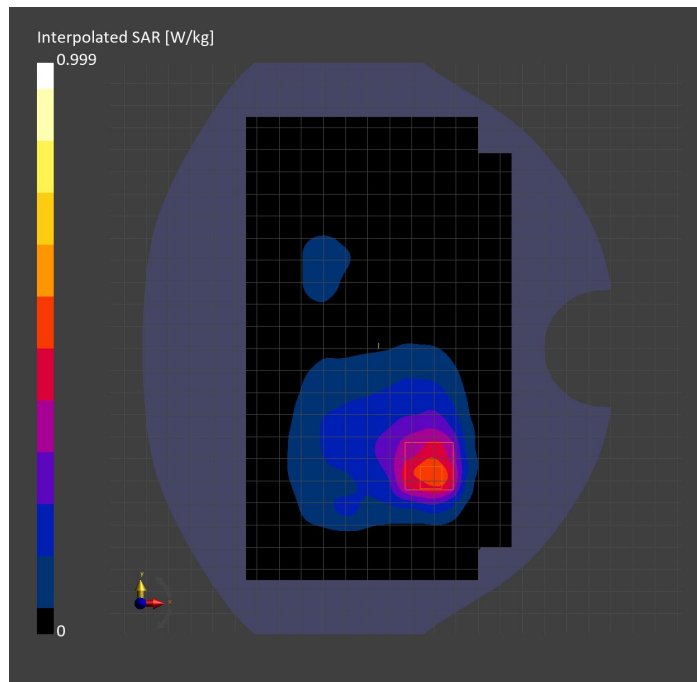
Probe   Calibration Date	EX3DV4 - SN7569   2023-04-18	Phantom	Twin-SAM V8.0 (30deg probe tilt)
DAE   Calibration Date	DAE4 Sn1547   2023-04-18	TSL Type	HBBL-600-10000
Software Version	16.2.4.2524		

## Scan Setup

	Area Scan	Zoom Scan
Grid Extents [mm]	120.0 x 210.0	30.0 x 30.0 x 30.0
Grid Steps [mm]	15.0 x 15.0	6.0 x 6.0 x 1.5
Sensor Surface [mm]	3.0	1.4
Graded Grid	N/A	Yes
M2/M1 [%]		78.4
Dist 3dB Peak [mm]		9.7

## Measurement Results

	Area Scan	Zoom Scan
psSAR1g [W/Kg]	0.474	<b>0.478</b>
psSAR10g [W/Kg]	0.270	<b>0.265</b>
Power Drift [dB]	N/A	-0.11



# Measurement Report for Band n70: 5G NR (DFT-s-OFDM, 1 RB, 15 MHz, QPSK, 15 kHz) RBPosition:Mid AntennaCfg:SISO, CHEEK

## Exposure Conditions

<b>Band</b>	Band n70	<b>TSL Permittivity</b>	40.0
<b>Frequency [MHz]   Channel Number</b>	1702.500   340500	<b>TSL Conductivity [S/m]</b>	1.29
<b>Group   UID</b>	5G NR FR1 FDD   10930-AAC	<b>Phantom Section   TSL</b>	LeftHead   HSL
<b>Conversion Factor</b>	8.66	<b>Test Distance [mm]</b>	0.00

## Hardware Setup

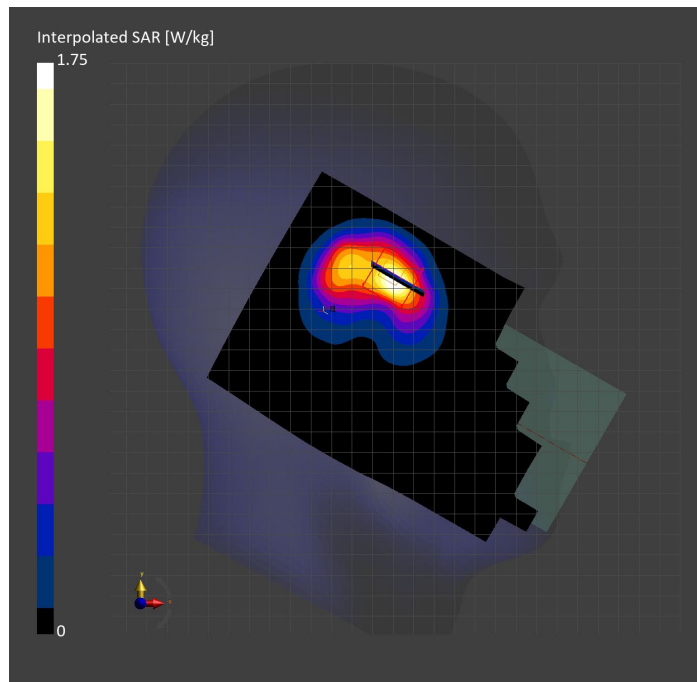
<b>Probe   Calibration Date</b>	EX3DV4 - SN7569   2023-04-18	<b>Phantom</b>	Twin-SAM V8.0 (30deg probe tilt)
<b>DAE   Calibration Date</b>	DAE4 Sn1547   2023-04-18	<b>TSL Type</b>	HBBL-600-10000
<b>Software Version</b>	16.2.4.2524		

## Scan Setup

	Area Scan	Zoom Scan
<b>Grid Extents [mm]</b>	120.0 x 210.0	30.0 x 30.0 x 30.0
<b>Grid Steps [mm]</b>	15.0 x 15.0	6.0 x 6.0 x 1.5
<b>Sensor Surface [mm]</b>	3.0	1.4
<b>Graded Grid</b>	N/A	Yes
<b>M2/M1 [%]</b>		72.7
<b>Dist 3dB Peak [mm]</b>		5.4

## Measurement Results

	Area Scan	Zoom Scan
<b>psSAR1g [W/Kg]</b>	0.603	<b>0.729</b>
<b>psSAR10g [W/Kg]</b>	0.324	<b>0.338</b>
<b>Power Drift [dB]</b>	N/A	-0.08



# Measurement Report for Band n71: 5G NR (DFT-s-OFDM, 1 RB, 20 MHz, QPSK, 15 kHz) RBPosition:Mid AntennaCfg:SISO, BACK

## Exposure Conditions

Band	Band n71	TSL Permittivity	44.5
Frequency [MHz]   Channel Number	680.500   136100	TSL Conductivity [S/m]	0.838
Group   UID	5G NR FR1 FDD   10931-AAC	Phantom Section   TSL	Flat   HSL
Conversion Factor	10.62	Test Distance [mm]	5.00

## Hardware Setup

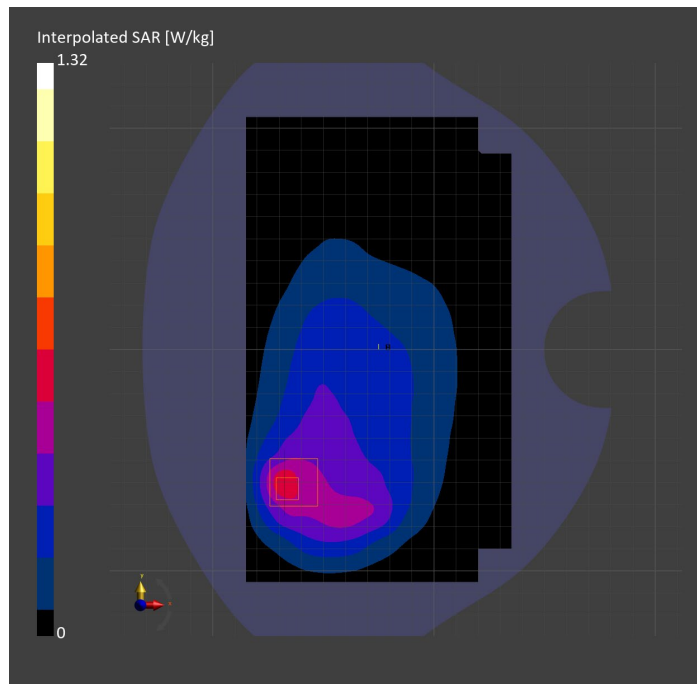
Probe   Calibration Date	EX3DV4 - SN7589   2023-04-18	Phantom	Twin-SAM V5.0 (30deg probe tilt)
DAE   Calibration Date	DAE4 Sn1544   2023-01-24	TSL Type	HBBL-600-10000
Software Version	16.2.4.2524		

## Scan Setup

	Area Scan	Zoom Scan
Grid Extents [mm]	120.0 x 210.0	30.0 x 30.0 x 30.0
Grid Steps [mm]	15.0 x 15.0	6.0 x 6.0 x 1.5
Sensor Surface [mm]	3.0	1.4
Graded Grid	N/A	Yes
M2/M1 [%]		73.2
Dist 3dB Peak [mm]		8.1

## Measurement Results

	Area Scan	Zoom Scan
psSAR1g [W/Kg]	0.526	<b>0.564</b>
psSAR10g [W/Kg]	0.336	<b>0.314</b>
Power Drift [dB]	N/A	0.00



# Measurement Report for Band n71: 5G NR (DFT-s-OFDM, 1 RB, 20 MHz, QPSK, 15 kHz) RBPosition:Mid AntennaCfg:SISO, EDGE RIGHT

## Exposure Conditions

Band	Band n71	TSL Permittivity	44.5
Frequency [MHz]   Channel Number	680.500   136100	TSL Conductivity [S/m]	0.838
Group   UID	5G NR FR1 FDD   10931-AAC	Phantom Section   TSL	Flat   HSL
Conversion Factor	10.62	Test Distance [mm]	5.00

## Hardware Setup

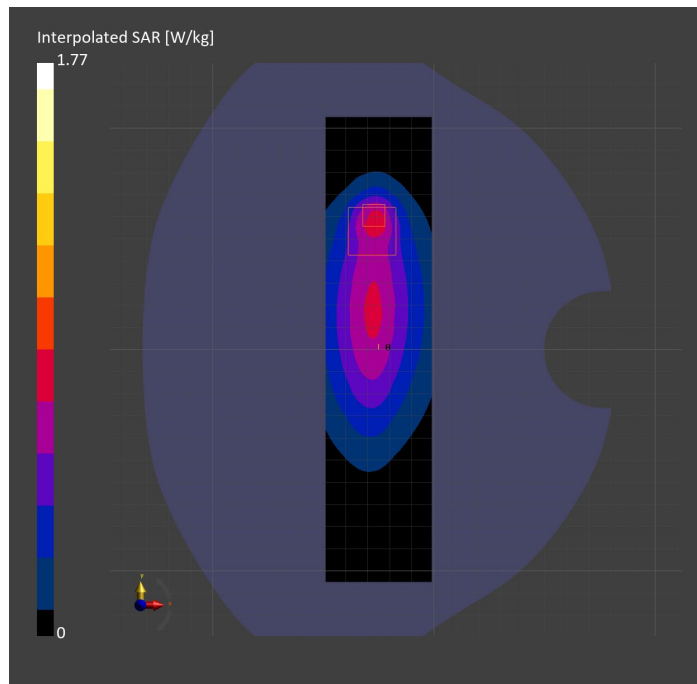
Probe   Calibration Date	EX3DV4 - SN7589   2023-04-18	Phantom	Twin-SAM V5.0 (30deg probe tilt)
DAE   Calibration Date	DAE4 Sn1544   2023-01-24	TSL Type	HBBL-600-10000
Software Version	16.2.4.2524		

## Scan Setup

	Area Scan	Zoom Scan
Grid Extents [mm]	48.0 x 210.0	30.0 x 30.0 x 30.0
Grid Steps [mm]	8.0 x 15.0	6.0 x 6.0 x 1.5
Sensor Surface [mm]	3.0	1.4
Graded Grid	N/A	Yes
M2/M1 [%]		62.9
Dist 3dB Peak [mm]		7.6

## Measurement Results

	Area Scan	Zoom Scan
psSAR1g [W/Kg]	0.688	<b>0.675</b>
psSAR10g [W/Kg]	0.452	<b>0.392</b>
Power Drift [dB]	N/A	0.06



# Measurement Report for Band n71: 5G NR (DFT-s-OFDM, 50% RB, 20 MHz, QPSK, 15 kHz) RBPosition:Mid AntennaCfg:SISO, CHEEK

## Exposure Conditions

Band	Band n71	TSL Permittivity	40.4
Frequency [MHz]   Channel Number	680.500   136100	TSL Conductivity [S/m]	0.859
Group   UID	5G NR FR1 FDD   10939-AAC	Phantom Section   TSL	RightHead   HSL
Conversion Factor	8.93	Test Distance [mm]	0.00

## Hardware Setup

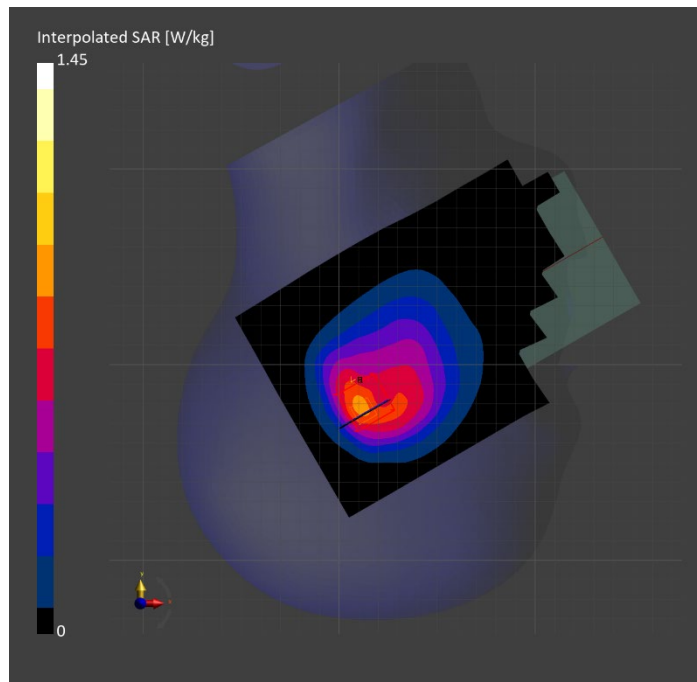
Probe   Calibration Date	EX3DV4 - SN7448   2023-02-14	Phantom	Twin-SAM V5.0 (30deg probe tilt)
DAE   Calibration Date	DAE4 Sn1472   2023-01-23	TSL Type	HBBL-600-10000
Software Version	16.2.4.2524		

## Scan Setup

	Area Scan	Zoom Scan
Grid Extents [mm]	120.0 x 210.0	30.0 x 30.0 x 30.0
Grid Steps [mm]	15.0 x 15.0	6.0 x 6.0 x 1.5
Sensor Surface [mm]	3.0	1.4
Graded Grid	N/A	Yes
M2/M1 [%]		77.4
Dist 3dB Peak [mm]		9.7

## Measurement Results

	Area Scan	Zoom Scan
psSAR1g [W/Kg]	0.747	<b>0.684</b>
psSAR10g [W/Kg]	0.491	<b>0.406</b>
Power Drift [dB]	N/A	-0.01



# Measurement Report for Band n77: 5G NR (DFT-s-OFDM, 50% RB, 100 MHz, QPSK, 30 kHz) RBPosition:Mid AntennaCfg:SISO, BACK

## Exposure Conditions

Band	Band n77	TSL Permittivity	37.2
Frequency [MHz]   Channel Number	3499.980   633332	TSL Conductivity [S/m]	3.03
Group   UID	5G NR FR1 TDD   10917-AAD	Phantom Section   TSL	Flat   HSL
Conversion Factor	6.87	Test Distance [mm]	5.00

## Hardware Setup

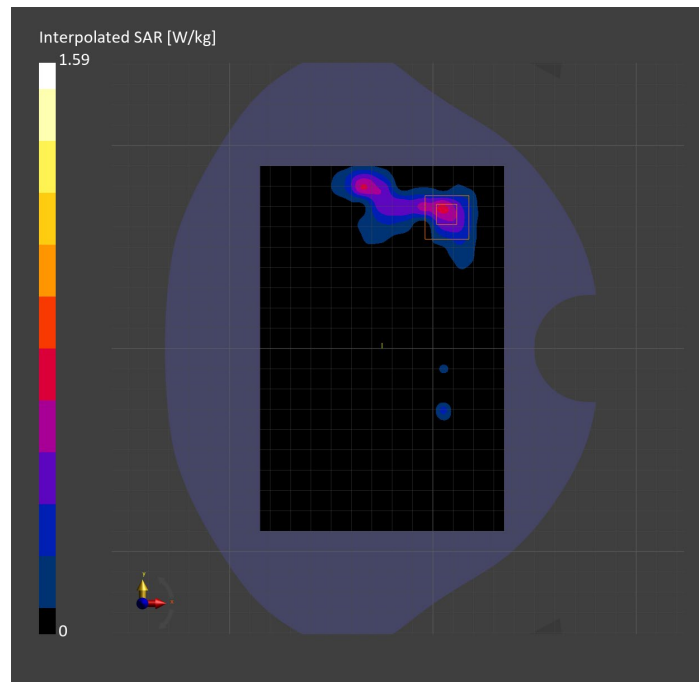
Probe   Calibration Date	EX3DV4 - SN7335   2023-01-26	Phantom	Twin-SAM V8.0 (30deg probe tilt)
DAE   Calibration Date	DAE4ip Sn1619   2023-04-18	TSL Type	HBBL-600-10000
Software Version	16.2.4.2448		

## Scan Setup

	Area Scan	Zoom Scan	Secondary Zoom Scan
Grid Extents [mm]	120.0 x 180.0	28.0 x 28.0 x 28.0	28.0 x 28.0 x 28.0
Grid Steps [mm]	10.0 x 10.0	5.0 x 5.0 x 1.4	5.0 x 5.0 x 1.4
Sensor Surface [mm]	3.0	1.4	1.4
Graded Grid	N/A	Yes	Yes
M2/M1 [%]		77.3	77.3
Dist 3dB Peak [mm]		6.0	5.9

## Measurement Results

	Area Scan	Zoom Scan	Secondary Zoom Scan
psSAR1g [W/Kg]	0.483	<b>0.566</b>	<b>0.554</b>
psSAR10g [W/Kg]	0.185	<b>0.186</b>	<b>0.182</b>
Power Drift [dB]	N/A	-2.79	-1.50



# Measurement Report for Band n77: 5G NR (DFT-s-OFDM, 1 RB, 100 MHz, QPSK, 30 kHz) RBPosition:Mid AntennaCfg:SISO, CHEEK

## Exposure Conditions

<b>Band</b>	Band n77	<b>TSL Permittivity</b>	38.0
<b>Frequency [MHz]   Channel Number</b>	3499.980   633332	<b>TSL Conductivity [S/m]</b>	2.77
<b>Group   UID</b>	5G NR FR1 TDD   10866-AAF	<b>Phantom Section   TSL</b>	LeftHead   HSL
<b>Conversion Factor</b>	6.87	<b>Test Distance [mm]</b>	0.00

## Hardware Setup

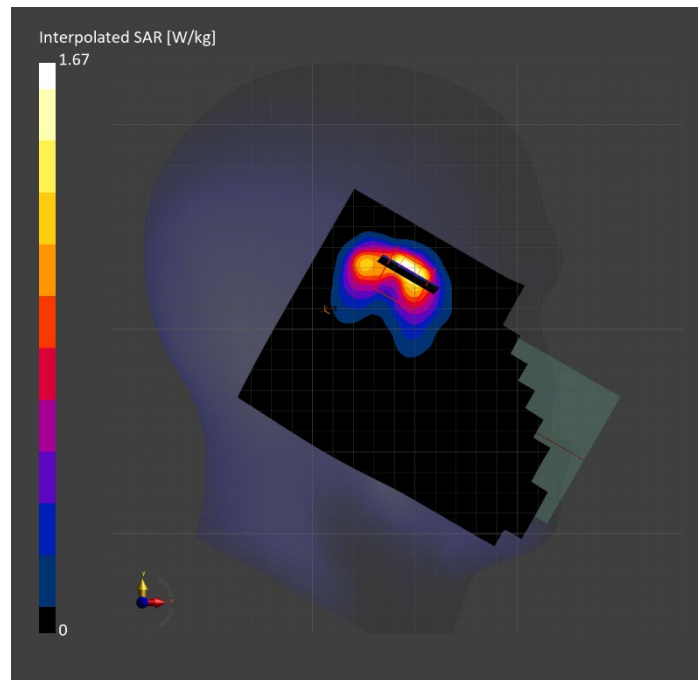
<b>Probe   Calibration Date</b>	EX3DV4 - SN7335   2023-01-26	<b>Phantom</b>	Twin-SAM V8.0 (30deg probe tilt)
<b>DAE   Calibration Date</b>	DAE4ip Sn1619   2023-04-18	<b>TSL Type</b>	HBBL-600-10000
<b>Software Version</b>	16.2.4.2524		

## Scan Setup

	Area Scan	Zoom Scan
<b>Grid Extents [mm]</b>	120.0 x 180.0	28.0 x 28.0 x 28.0
<b>Grid Steps [mm]</b>	10.0 x 10.0	4.6 x 4.6 x 1.4
<b>Sensor Surface [mm]</b>	3.0	1.4
<b>Graded Grid</b>	N/A	Yes
<b>M2/M1 [%]</b>		72.4
<b>Dist 3dB Peak [mm]</b>		5.9

## Measurement Results

	Area Scan	Zoom Scan
<b>psSAR1g [W/Kg]</b>	0.555	<b>0.568</b>
<b>psSAR10g [W/Kg]</b>	0.227	<b>0.219</b>
<b>0.Power Drift [dB]</b>	N/A	-0.15



# Measurement Report for Band n77: 5G NR (DFT-s-OFDM, 1 RB, 100 MHz, QPSK, 30 kHz) RBPosition:Mid AntennaCfg:SISO, EDGE RIGHT

## Exposure Conditions

Band	Band n77	TSL Permittivity	36.9
Frequency [MHz]   Channel Number	3499.980   633332	TSL Conductivity [S/m]	2.78
Group   UID	5G NR FR1 TDD   10866-AAF	Phantom Section   TSL	Flat   HSL
Conversion Factor	6.87	Test Distance [mm]	5.00

## Hardware Setup

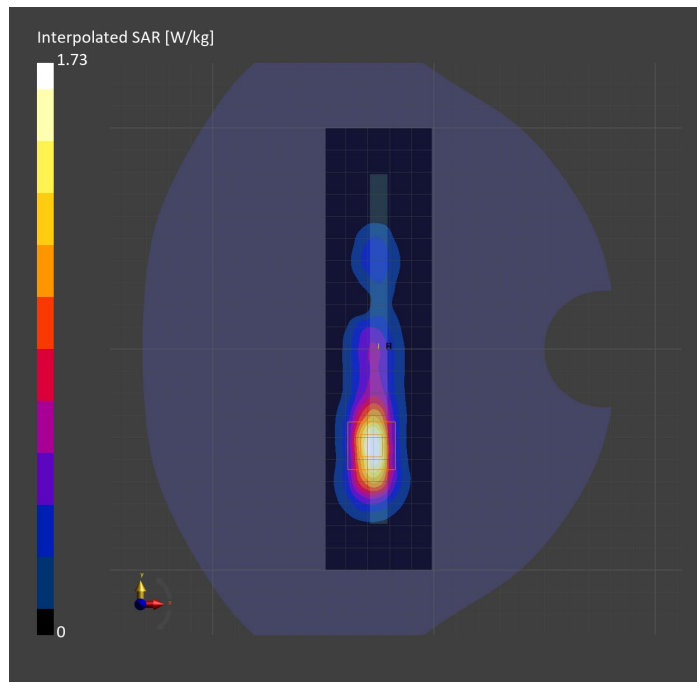
Probe   Calibration Date	EX3DV4 - SN7335   2023-01-26	Phantom	Twin-SAM V8.0 (30deg probe tilt)
DAE   Calibration Date	DAE4ip Sn1619   2023-04-18	TSL Type	HBBL-600-10000
Software Version	16.2.4.2448		

## Scan Setup

	Area Scan	Zoom Scan
Grid Extents [mm]	48.0 x 200.0	30.0 x 30.0 x 28.0
Grid Steps [mm]	8.0 x 10.0	5.0 x 5.0 x 1.4
Sensor Surface [mm]	3.0	1.4
Graded Grid	N/A	Yes
M2/M1 [%]		75.4
Dist 3dB Peak [mm]		7.1

## Measurement Results

	Area Scan	Zoom Scan
psSAR1g [W/Kg]	0.650	<b>0.674</b>
psSAR10g [W/Kg]	0.261	<b>0.262</b>
Power Drift [dB]	-0.02	-0.04





# Measurement Report for Band n77: 5G NR (DFT-s-OFDM, 50% RB, 100 MHz, QPSK, 30 kHz) RBPosition:Mid AntennaCfg:SISO, TILT

## Exposure Conditions

<b>Band</b>	Band n77	<b>TSL Permittivity</b>	36.1
<b>Frequency [MHz]   Channel Number</b>	3858.000   657200	<b>TSL Conductivity [S/m]</b>	3.20
<b>Group   UID</b>	5G NR FR1 TDD   10917-AAD	<b>Phantom Section   TSL</b>	LeftHead   HSL
<b>Conversion Factor</b>	6.15	<b>Test Distance [mm]</b>	0.00

## Hardware Setup

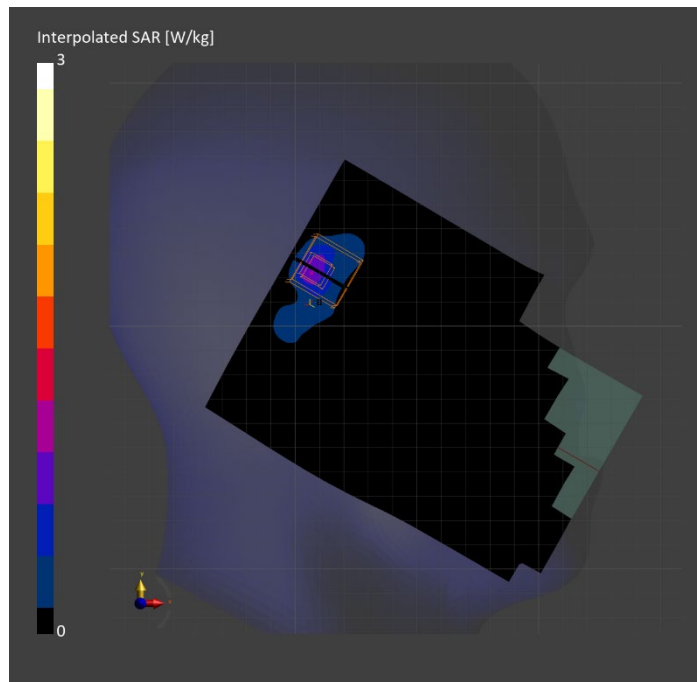
<b>Probe   Calibration Date</b>	EX3DV4 - SN7463   2023-04-19	<b>Phantom</b>	Twin-SAM V8.0 (30deg probe tilt)
<b>DAE   Calibration Date</b>	DAE4 Sn1673   2023-05-12	<b>TSL Type</b>	HBBL-600-10000
<b>Software Version</b>	16.2.4.2448		

## Scan Setup

	Area Scan	Zoom Scan
<b>Grid Extents [mm]</b>	120.0 x 180.0	28.0 x 28.0 x 28.0
<b>Grid Steps [mm]</b>	10.0 x 10.0	4.2 x 4.2 x 1.4
<b>Sensor Surface [mm]</b>	3.0	1.4
<b>Graded Grid</b>	N/A	Yes
<b>M2/M1 [%]</b>		73.5
<b>Dist 3dB Peak [mm]</b>		5.1

## Measurement Results

	Area Scan	Zoom Scan
<b>psSAR1g [W/Kg]</b>	0.650	<b>0.889</b>
<b>psSAR10g [W/Kg]</b>	0.234	<b>0.254</b>
<b>Power Drift [dB]</b>	-0.03	-0.00



# Measurement Report for Band n77: 5G NR (DFT-s-OFDM, 1 RB, 100 MHz, QPSK, 30 kHz) RBPosition:Mid AntennaCfg:SISO, EDGE TOP

## Exposure Conditions

Band	Band n77	TSL Permittivity	36.1
Frequency [MHz]   Channel Number	3858.000   657200	TSL Conductivity [S/m]	3.16
Group   UID	5G NR FR1 TDD   10866-AAF	Phantom Section   TSL	Flat   HSL
Conversion Factor	6.15	Test Distance [mm]	5.00

## Hardware Setup

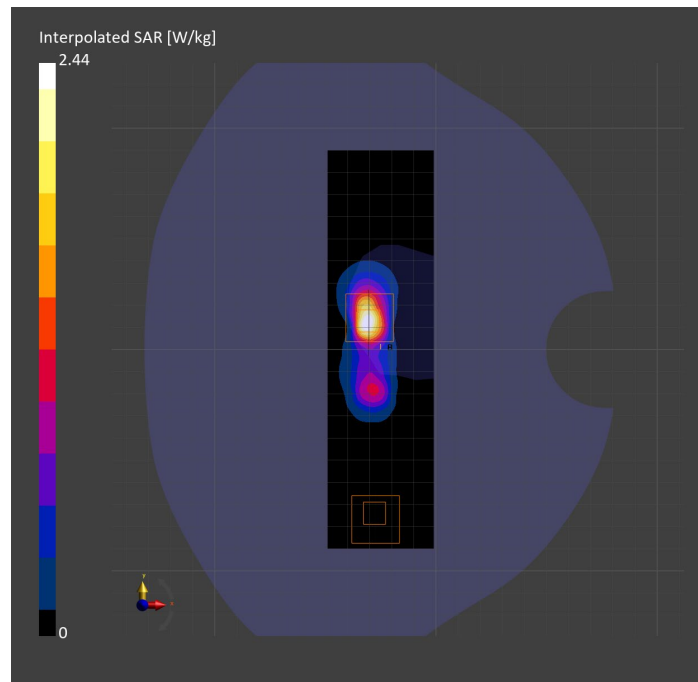
Probe   Calibration Date	EX3DV4 - SN7463   2023-04-19	Phantom	Twin-SAM V8.0 (30deg probe tilt)
DAE   Calibration Date	DAE4 Sn1673   2023-05-12	TSL Type	HBBL-600-10000
Software Version	16.2.4.2524		

## Scan Setup

	Area Scan	Zoom Scan
Grid Extents [mm]	48.0 x 120.0	30.0 x 30.0 x 28.0
Grid Steps [mm]	8.0 x 10.0	5.0 x 5.0 x 1.4
Sensor Surface [mm]	3.0	1.4
Graded Grid	N/A	Yes
M2/M1 [%]		71.4
Dist 3dB Peak [mm]		5.1

## Measurement Results

	Area Scan	Zoom Scan
psSAR1g [W/Kg]	0.660	<b>0.743</b>
psSAR10g [W/Kg]	0.212	<b>0.221</b>
Power Drift [dB]	N/A	-0.00



# Measurement Report for Band n77: 5G NR (DFT-s-OFDM, 50% RB, 100 MHz, QPSK, 30 kHz) RBPosition:Mid AntennaCfg:SISO, BACK

## Exposure Conditions

Band	Band n77	TSL Permittivity	36.1
Frequency [MHz]   Channel Number	3858.000   657200	TSL Conductivity [S/m]	3.16
Group   UID	5G NR FR1 TDD   10917-AAD	Phantom Section   TSL	Flat   HSL
Conversion Factor	6.15	Test Distance [mm]	5.00

## Hardware Setup

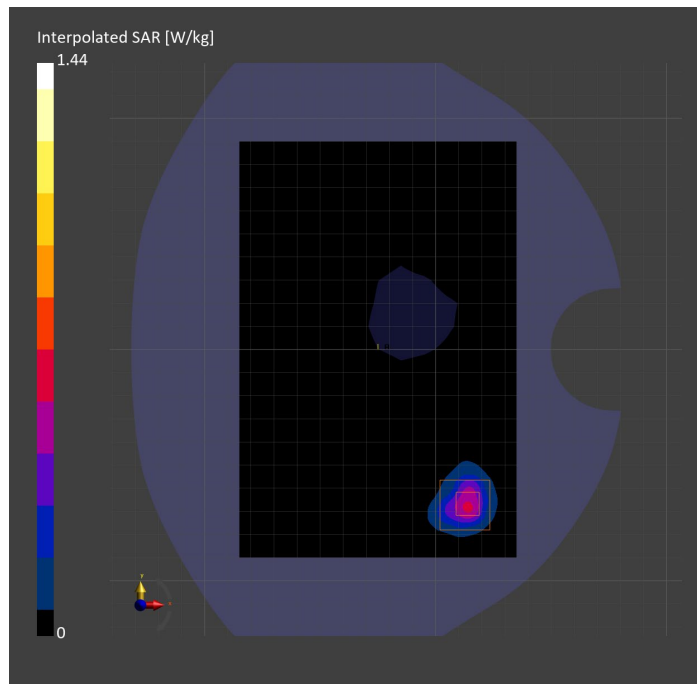
Probe   Calibration Date	EX3DV4 - SN7463   2023-04-19	Phantom	Twin-SAM V8.0 (30deg probe tilt)
DAE   Calibration Date	DAE4 Sn1673   2023-05-12	TSL Type	HBBL-600-10000
Software Version	16.2.4.2524		

## Scan Setup

	Area Scan	Zoom Scan
Grid Extents [mm]	120.0 x 180.0	28.0 x 28.0 x 28.0
Grid Steps [mm]	10.0 x 10.0	5.0 x 5.0 x 1.4
Sensor Surface [mm]	3.0	1.4
Graded Grid	N/A	Yes
M2/M1 [%]		71.5
Dist 3dB Peak [mm]		7.1

## Measurement Results

	Area Scan	Zoom Scan
psSAR1g [W/Kg]	0.435	<b>0.472</b>
psSAR10g [W/Kg]	0.151	<b>0.151</b>
Power Drift [dB]	N/A	-0.00



THIS PAGE INTENTIONALLY LEFT BLANK

THIS PAGE INTENTIONALLY LEFT BLANK

THIS PAGE INTENTIONALLY LEFT BLANK

# Measurement Report for WLAN 2.4GHz: IEEE 802.11b WiFi 2.4 GHz (DSSS, 1 Mbps, 99pc duty cycle), CHEEK

## Exposure Conditions

Band	WLAN 2.4GHz	TSL Permittivity	40.9
Frequency [MHz]   Channel Number	2412.000   1	TSL Conductivity [S/m]	1.70
Group   UID	WLAN   10415-AAA	Phantom Section   TSL	LeftHead   HSL
Conversion Factor	7.64	Test Distance [mm]	0.00

## Hardware Setup

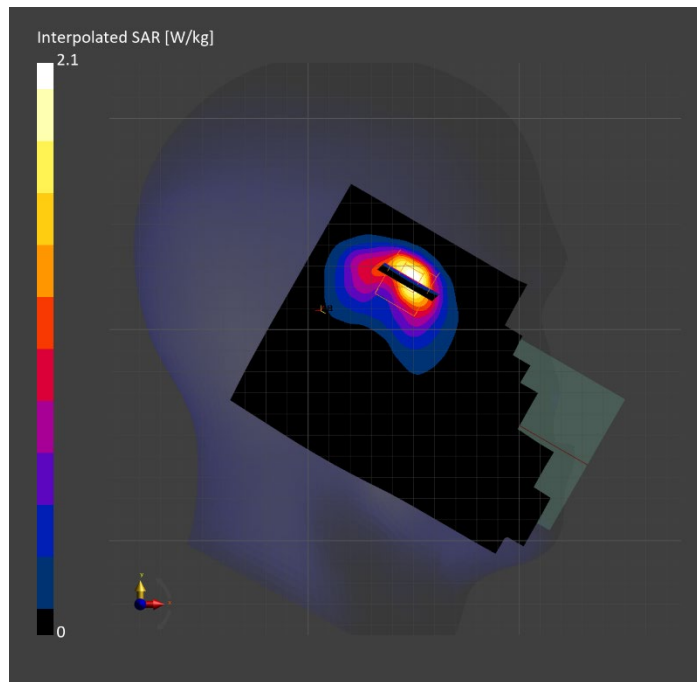
Probe   Calibration Date	EX3DV4 - SN7587   2023-04-18	Phantom	Twin-SAM V8.0 (30deg probe tilt)
DAE   Calibration Date	DAE4 Sn1239   2023-03-16	TSL Type	HBBL-600-10000
Software Version	16.2.4.2524		

## Scan Setup

	Area Scan	Zoom Scan
Grid Extents [mm]	120.0 x 180.0	30.0 x 30.0 x 30.0
Grid Steps [mm]	10.0 x 10.0	5.0 x 5.0 x 1.5
Sensor Surface [mm]	3.0	1.4
Graded Grid	N/A	Yes
M2/M1 [%]		75.8
Dist 3dB Peak [mm]		5.7

## Measurement Results

	Area Scan	Zoom Scan
psSAR1g [W/Kg]	0.724	<b>0.834</b>
psSAR10g [W/Kg]	0.334	<b>0.349</b>
Power Drift [dB]	N/A	-0.07



# Measurement Report for WLAN 2.4GHz: IEEE 802.11b WiFi 2.4 GHz (DSSS, 1 Mbps, 99pc duty cycle), EDGE RIGHT

## Exposure Conditions

Band	WLAN 2.4GHz	TSL Permittivity	41.1
Frequency [MHz]   Channel Number	2437.000   6	TSL Conductivity [S/m]	1.73
Group   UID	WLAN   10415-AAA	Phantom Section   TSL	Flat   HSL
Conversion Factor	7.64	Test Distance [mm]	5.00

## Hardware Setup

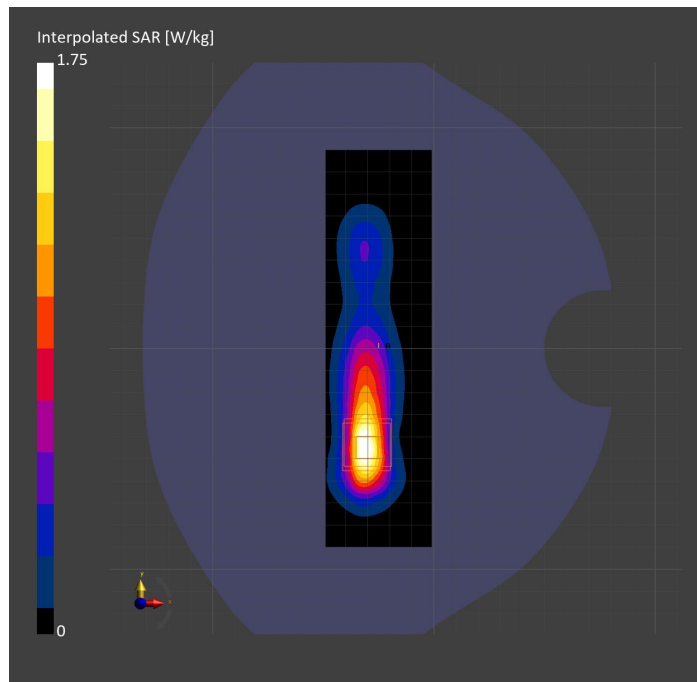
Probe   Calibration Date	EX3DV4 - SN7587   2023-04-18	Phantom	Twin-SAM V8.0 (30deg probe tilt)
DAE   Calibration Date	DAE4 Sn1239   2022-03-21	TSL Type	HBBL-600-10000
Software Version	16.2.4.2524		

## Scan Setup

	Area Scan	Zoom Scan
Grid Extents [mm]	48.0 x 180.0	30.0 x 30.0 x 30.0
Grid Steps [mm]	8.0 x 10.0	5.0 x 5.0 x 1.5
Sensor Surface [mm]	3.0	1.4
Graded Grid	N/A	Yes
M2/M1 [%]		77.8
Dist 3dB Peak [mm]		7.0

## Measurement Results

	Area Scan	Zoom Scan
psSAR1g [W/Kg]	0.744	<b>0.774</b>
psSAR10g [W/Kg]	0.331	<b>0.332</b>
Power Drift [dB]	N/A	-0.17





# Measurement Report for WLAN 2.4GHz: IEEE 802.11b WiFi 2.4 GHz (DSSS, 1 Mbps, 99pc duty cycle), BACK

## Exposure Conditions

Band	WLAN 2.4GHz	TSL Permittivity	39.9
Frequency [MHz]   Channel Number	2462.000   11	TSL Conductivity [S/m]	1.87
Group   UID	WLAN   10415-AAA	Phantom Section   TSL	Flat   HSL
Conversion Factor	7.33	Test Distance [mm]	5.00

## Hardware Setup

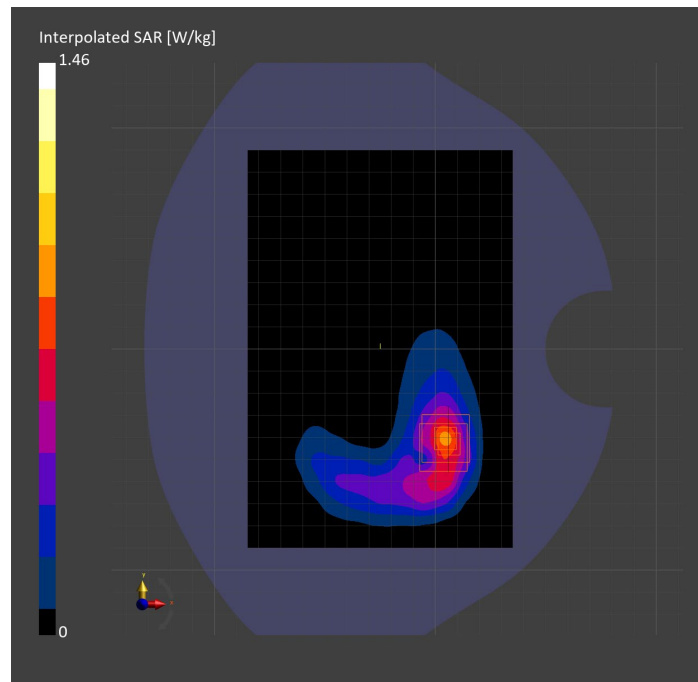
Probe   Calibration Date	EX3DV4 - SN3772   2023-02-13	Phantom	Twin-SAM V8.0 (30deg probe tilt)
DAE   Calibration Date	DAE4 Sn1359   2023-01-24	TSL Type	HBBL-600-10000
Software Version	16.2.4.2524		

## Scan Setup

	Area Scan	Zoom Scan
Grid Extents [mm]	120.0 x 180.0	30.0 x 30.0 x 30.0
Grid Steps [mm]	10.0 x 10.0	5.0 x 5.0 x 1.5
Sensor Surface [mm]	3.0	1.4
Graded Grid	N/A	Yes
M2/M1 [%]		81.1
Dist 3dB Peak [mm]		7.9

## Measurement Results

	Area Scan	Zoom Scan
psSAR1g [W/Kg]	0.669	<b>0.697</b>
psSAR10g [W/Kg]	0.316	<b>0.314</b>
Power Drift [dB]	N/A	-0.06



# Measurement Report for U-NII-1, U-NII-2A: IEEE 802.11n (HT Greenfield, 13.5 Mbps, BPSK), CHEEK

## Exposure Conditions

Band	U-NII-1, U-NII-2A	TSL Permittivity	37.7
Frequency [MHz]   Channel Number	5230.000   46	TSL Conductivity [S/m]	4.81
Group   UID	WLAN   10114-CAE	Phantom Section   TSL	RightHead   HSL
Conversion Factor	5.14	Test Distance [mm]	0.00

## Hardware Setup

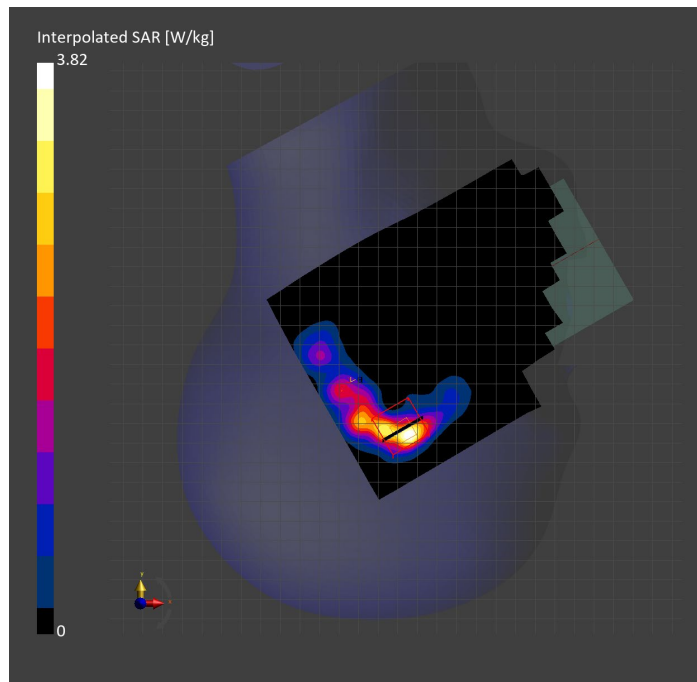
Probe   Calibration Date	EX3DV4 - SN3773   2023-02-13	Phantom	Twin-SAM V5.0 (30deg probe tilt)
DAE   Calibration Date	DAE4 Sn1258   2023-03-16	TSL Type	HBBL-600-10000
Software Version	16.2.4.2524		

## Scan Setup

	Area Scan	Zoom Scan
Grid Extents [mm]	120.0 x 180.0	22.0 x 22.0 x 22.0
Grid Steps [mm]	10.0 x 10.0	4.0 x 4.0 x 1.4
Sensor Surface [mm]	3.0	1.4
Graded Grid	N/A	Yes
M2/M1 [%]		58.1
Dist 3dB Peak [mm]		4.7

## Measurement Results

	Area Scan	Zoom Scan
psSAR1g [W/Kg]	0.717	<b>0.832</b>
psSAR10g [W/Kg]	0.239	<b>0.257</b>
Power Drift [dB]	N/A	0.00



# Measurement Report for U-NII-1, U-NII-2A: IEEE 802.11n (HT Greenfield, 13.5 Mbps, BPSK), BACK

## Exposure Conditions

Band	U-NII-1, U-NII-2A	TSL Permittivity	35.1
Frequency [MHz]   Channel Number	5230.000   46	TSL Conductivity [S/m]	4.57
Group   UID	WLAN   10114-CAE	Phantom Section   TSL	Flat   HSL
Conversion Factor	5.14	Test Distance [mm]	5.00

## Hardware Setup

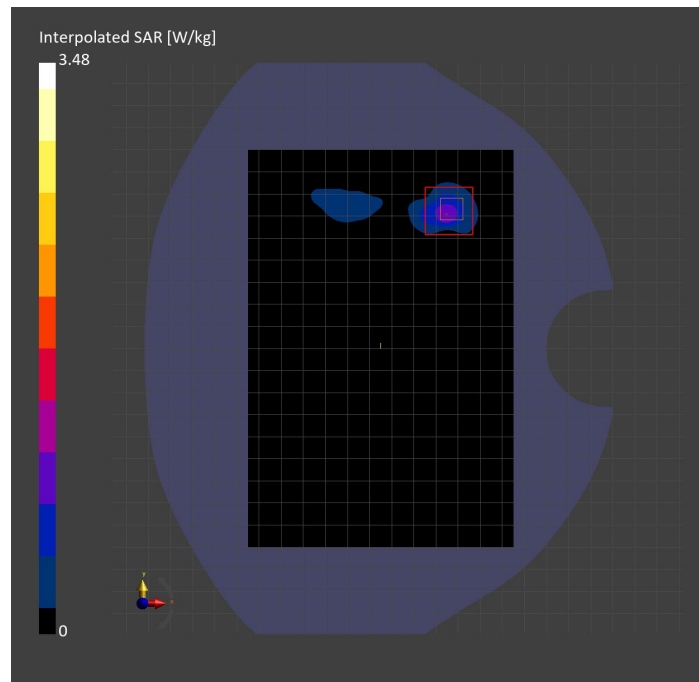
Probe   Calibration Date	EX3DV4 - SN3773   2023-02-13	Phantom	Twin-SAM V5.0 (30deg probe tilt)
DAE   Calibration Date	DAE4 Sn1258   2023-03-16	TSL Type	HBBL-600-10000
Software Version	16.2.4.2524		

## Scan Setup

	Area Scan	Zoom Scan	Secondary Zoom Scan
Grid Extents [mm]	120.0 x 180.0	24.0 x 24.0 x 22.0	24.0 x 24.0 x 22.0
Grid Steps [mm]	10.0 x 10.0	4.0 x 4.0 x 1.4	4.0 x 4.0 x 1.4
Sensor Surface [mm]	3.0	1.4	1.4
Graded Grid	N/A	Yes	Yes
M2/M1 [%]		61.2	60.5
Dist 3dB Peak [mm]		4.7	4.4

## Measurement Results

	Area Scan	Zoom Scan	Secondary Zoom Scan
psSAR1g [W/Kg]	0.733	<b>0.786</b>	<b>0.805</b>
psSAR10g [W/Kg]	0.223	<b>0.224</b>	<b>0.223</b>
Power Drift [dB]	N/A	N/A	-6.43



# Measurement Report for U-NII-1, U-NII-2A: IEEE 802.11n (HT Greenfield, 13.5 Mbps, BPSK), EDGE LEFT

## Exposure Conditions

Band	U-NII-1, U-NII-2A	TSL Permittivity	35.1
Frequency [MHz]   Channel Number	5230.000   46	TSL Conductivity [S/m]	4.57
Group   UID	WLAN   10114-CAE	Phantom Section   TSL	Flat   HSL
Conversion Factor	5.14	Test Distance [mm]	5.00

## Hardware Setup

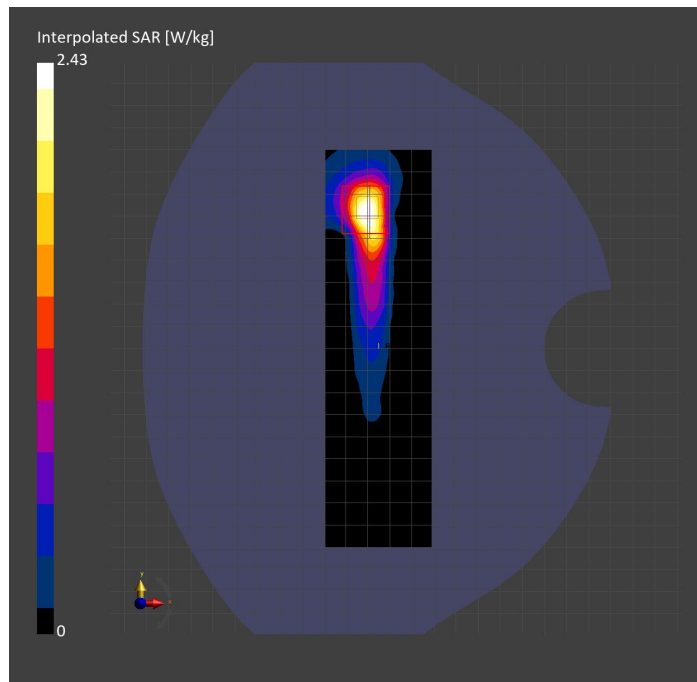
Probe   Calibration Date	EX3DV4 - SN3773   2023-02-13	Phantom	Twin-SAM V5.0 (30deg probe tilt)
DAE   Calibration Date	DAE4 Sn1258   2023-03-16	TSL Type	HBBL-600-10000
Software Version	16.2.4.2524		

## Scan Setup

	Area Scan	Zoom Scan
Grid Extents [mm]	48.0 x 180.0	24.0 x 24.0 x 22.0
Grid Steps [mm]	8.0 x 10.0	4.0 x 4.0 x 1.4
Sensor Surface [mm]	3.0	1.4
Graded Grid	N/A	Yes
M2/M1 [%]		61.9
Dist 3dB Peak [mm]		6.6

## Measurement Results

	Area Scan	Zoom Scan
psSAR1g [W/Kg]	0.580	<b>0.606</b>
psSAR10g [W/Kg]	0.201	<b>0.190</b>
Power Drift [dB]	N/A	-0.07



# Measurement Report for WLAN 5GHz: IEEE 802.11ac WiFi (80MHz, MCS0, 99pc duty cycle), EDGE LEFT

## Exposure Conditions

Band	WLAN 5GHz	TSL Permittivity	35.7
Frequency [MHz]   Channel Number	5610.000   122	TSL Conductivity [S/m]	4.88
Group   UID	WLAN   10544-AAD	Phantom Section   TSL	Flat   HSL
Conversion Factor	4.46	Test Distance [mm]	5.00

## Hardware Setup

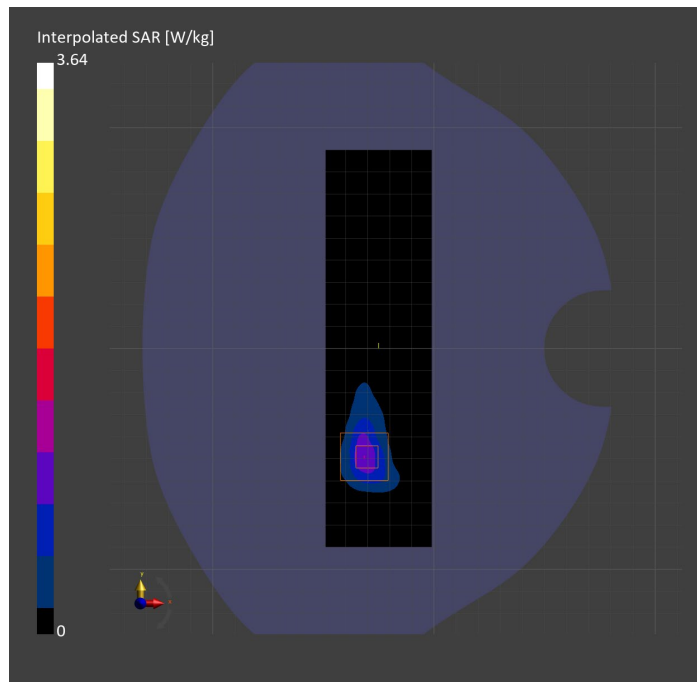
Probe   Calibration Date	EX3DV4 - SN7585   2023-04-18	Phantom	Twin-SAM V5.0 (30deg probe tilt)
DAE   Calibration Date	DAE4 Sn1259   2023-03-13	TSL Type	HBBL-600-10000
Software Version	16.2.4.2524		

## Scan Setup

	Area Scan	Zoom Scan
Grid Extents [mm]	48.0 x 180.0	24.0 x 24.0 x 22.0
Grid Steps [mm]	8.0 x 10.0	4.0 x 4.0 x 1.4
Sensor Surface [mm]	3.0	1.4
Graded Grid	N/A	Yes
M2/M1 [%]		62.2
Dist 3dB Peak [mm]		6.5

## Measurement Results

	Area Scan	Zoom Scan
psSAR1g [W/Kg]	0.827	<b>0.881</b>
psSAR10g [W/Kg]	0.276	<b>0.279</b>
Power Drift [dB]	N/A	-0.13



# Measurement Report for WLAN 5GHz: IEEE 802.11ac WiFi (80MHz, MCS0, 99pc duty cycle), CHEEK

## Exposure Conditions

Band	WLAN 5GHz	TSL Permittivity	35.5
Frequency [MHz]   Channel Number	5690.000   138	TSL Conductivity [S/m]	4.89
Group   UID	WLAN   10544-AAD	Phantom Section   TSL	RightHead   HSL
Conversion Factor	4.69	Test Distance [mm]	0.00

## Hardware Setup

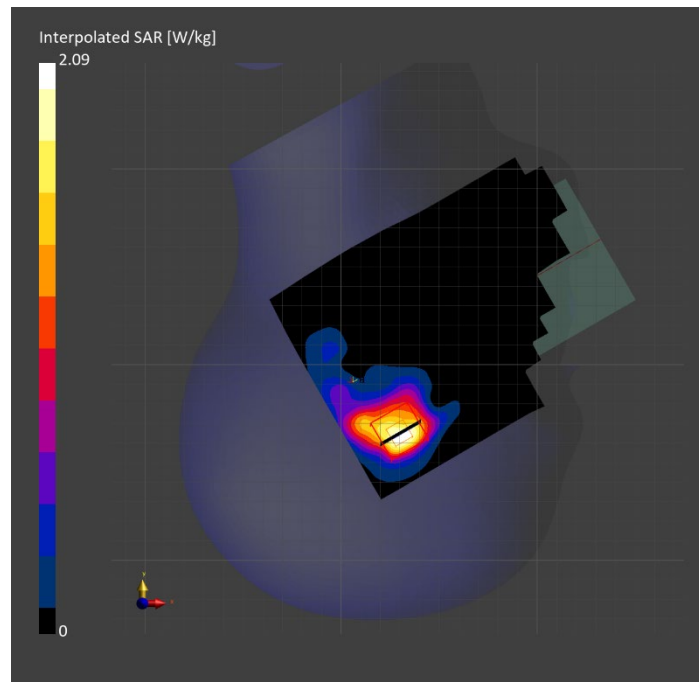
Probe   Calibration Date	EX3DV4 - SN7585   2023-04-18	Phantom	Twin-SAM V5.0 (30deg probe tilt)
DAE   Calibration Date	DAE4 Sn1259   2023-03-13	TSL Type	HBBL-600-10000
Software Version	16.2.4.2524		

## Scan Setup

	Area Scan	Zoom Scan
Grid Extents [mm]	120.0 x 180.0	24.0 x 24.0 x 22.0
Grid Steps [mm]	10.0 x 10.0	4.0 x 4.0 x 1.4
Sensor Surface [mm]	3.0	1.4
Graded Grid	N/A	Yes
M2/M1 [%]		57.8
Dist 3dB Peak [mm]		6.5

## Measurement Results

	Area Scan	Zoom Scan
psSAR1g [W/Kg]	0.405	<b>0.490</b>
psSAR10g [W/Kg]	0.159	<b>0.165</b>
Power Drift [dB]	N/A	-0.04



# Measurement Report for U-NII-2C < 5.65 GHz: IEEE 802.11ac WiFi (80MHz, MCS0, 99pc duty cycle), BACK

## Exposure Conditions

Band	U-NII-2C < 5.65 GHz	TSL Permittivity	36.9
Frequency [MHz]   Channel Number	5610.000   122	TSL Conductivity [S/m]	5.02
Group   UID	WLAN   10544-AAD	Phantom Section   TSL	Flat   HSL
Conversion Factor	4.46	Test Distance [mm]	5.00

## Hardware Setup

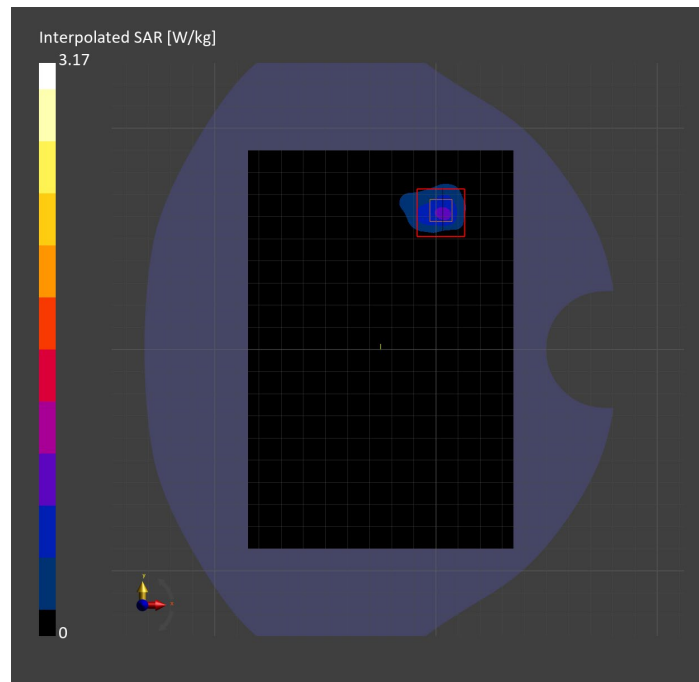
Probe   Calibration Date	EX3DV4 - SN7585   2023-04-18	Phantom	Twin-SAM V5.0 (30deg probe tilt)
DAE   Calibration Date	DAE4 Sn1259   2023-03-13	TSL Type	HBBL-600-10000
Software Version	16.2.4.2524		

## Scan Setup

	Area Scan	Zoom Scan	Secondary Zoom Scan
Grid Extents [mm]	120.0 x 180.0	24.0 x 24.0 x 22.0	24.0 x 24.0 x 22.0
Grid Steps [mm]	10.0 x 10.0	4.0 x 4.0 x 1.4	4.0 x 4.0 x 1.4
Sensor Surface [mm]	3.0	1.4	1.4
Graded Grid	N/A	Yes	Yes
M2/M1 [%]		57.6	58.2
Dist 3dB Peak [mm]		4.7	4.7

## Measurement Results

	Area Scan	Zoom Scan	Secondary Zoom Scan
psSAR1g [W/Kg]	0.605	<b>0.686</b>	<b>0.665</b>
psSAR10g [W/Kg]	0.190	<b>0.181</b>	<b>0.172</b>
Power Drift [dB]	N/A	3.35	3.08



# Measurement Report for WLAN 5GHz: IEEE 802.11ac WiFi (80MHz, MCS0, 99pc duty cycle), EDGE LEFT

## Exposure Conditions

Band	WLAN 5GHz	TSL Permittivity	35.2
Frequency [MHz]   Channel Number	5775.000   155	TSL Conductivity [S/m]	5.27
Group   UID	WLAN   10544-AAD	Phantom Section   TSL	Flat   HSL
Conversion Factor	5.15	Test Distance [mm]	5.00

## Hardware Setup

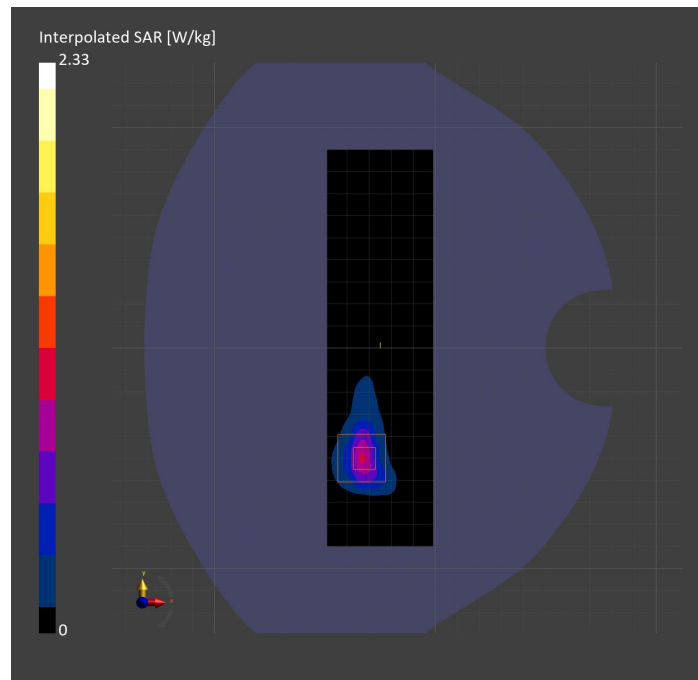
Probe   Calibration Date	EX3DV4 - SN3902   2023-03-17	Phantom	Twin-SAM V5.0 (30deg probe tilt)
DAE   Calibration Date	DAE4 Sn1439   2023-03-16	TSL Type	HBBL-600-10000
Software Version	16.2.4.2524		

## Scan Setup

	Area Scan	Zoom Scan	Secondary Zoom Scan
Grid Extents [mm]	48.0 x 180.0	24.0 x 24.0 x 22.0	24.0 x 24.0 x 22.0
Grid Steps [mm]	8.0 x 10.0	4.0 x 4.0 x 1.4	4.0 x 4.0 x 1.4
Sensor Surface [mm]	3.0	1.4	1.4
Graded Grid	N/A	Yes	Yes
M2/M1 [%]		59.5	59.7
Dist 3dB Peak [mm]		6.4	6.4

## Measurement Results

	Area Scan	Zoom Scan	Secondary Zoom Scan
psSAR1g [W/Kg]	0.659	<b>0.539</b>	<b>0.527</b>
psSAR10g [W/Kg]	0.211	<b>0.176</b>	<b>0.170</b>
Power Drift [dB]	N/A	-1.04	-0.34





# Measurement Report for WLAN 5GHz: IEEE 802.11ac WiFi (80MHz, MCS0, 99pc duty cycle), BACK

## Exposure Conditions

Band	WLAN 5GHz	TSL Permittivity	35.7
Frequency [MHz]   Channel Number	5775.000   155	TSL Conductivity [S/m]	5.17
Group   UID	WLAN   10544-AAD	Phantom Section   TSL	Flat   HSL
Conversion Factor	5.15	Test Distance [mm]	5.00

## Hardware Setup

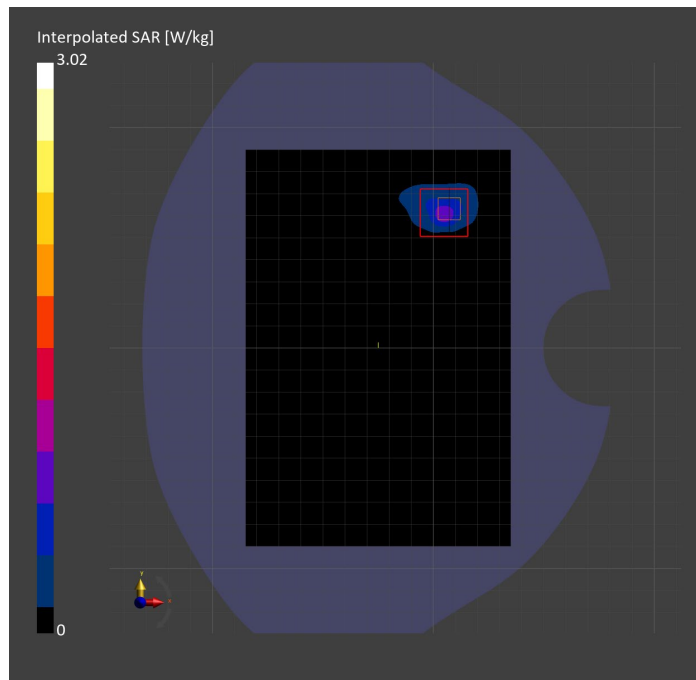
Probe   Calibration Date	EX3DV4 - SN3902   2023-03-17	Phantom	Twin-SAM V5.0 (30deg probe tilt)
DAE   Calibration Date	DAE4 Sn1439   2023-03-16	TSL Type	HBBL-600-10000
Software Version	16.2.4.2524		

## Scan Setup

	Area Scan	Zoom Scan
Grid Extents [mm]	120.0 x 180.0	24.0 x 24.0 x 22.0
Grid Steps [mm]	10.0 x 10.0	4.0 x 4.0 x 1.4
Sensor Surface [mm]	3.0	1.4
Graded Grid	N/A	Yes
M2/M1 [%]		62.9
Dist 3dB Peak [mm]		4.4

## Measurement Results

	Area Scan	Zoom Scan
psSAR1g [W/Kg]	0.602	<b>0.678</b>
psSAR10g [W/Kg]	0.187	<b>0.192</b>
Power Drift [dB]	N/A	-0.03



# Measurement Report for WLAN 5GHz: IEEE 802.11ac WiFi (80MHz, MCS0, 99pc duty cycle), CHEEK

## Exposure Conditions

Band	WLAN 5GHz	TSL Permittivity	35.1
Frequency [MHz]   Channel Number	5775.000   155	TSL Conductivity [S/m]	5.03
Group   UID	WLAN   10544-AAD	Phantom Section   TSL	RightHead   HSL
Conversion Factor	5.15	Test Distance [mm]	0.00

## Hardware Setup

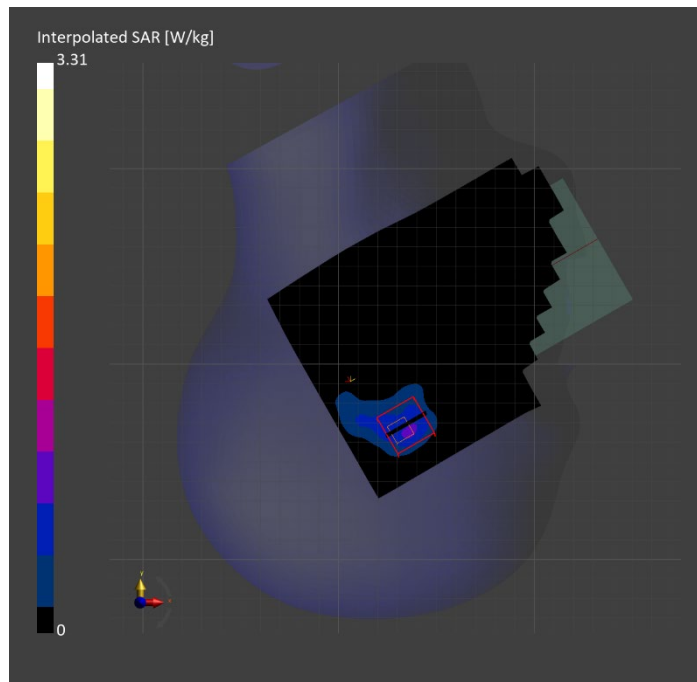
Probe   Calibration Date	EX3DV4 - SN3902   2023-03-17	Phantom	Twin-SAM V5.0 (30deg probe tilt)
DAE   Calibration Date	DAE4 Sn1439   2023-03-16	TSL Type	HBBL-600-10000
Software Version	16.2.4.2524		

## Scan Setup

	Area Scan	Zoom Scan
Grid Extents [mm]	120.0 x 180.0	24.0 x 24.0 x 22.0
Grid Steps [mm]	10.0 x 10.0	4.0 x 4.0 x 1.4
Sensor Surface [mm]	3.0	1.4
Graded Grid	N/A	Yes
M2/M1 [%]		58.9
Dist 3dB Peak [mm]		5.6

## Measurement Results

	Area Scan	Zoom Scan
psSAR1g [W/Kg]	0.620	<b>0.777</b>
psSAR10g [W/Kg]	0.246	<b>0.250</b>
Power Drift [dB]	N/A	0.20



# Measurement Report for ISM 2.4 GHz Band: IEEE 802.15.1 Bluetooth (GFSK, DH5), BACK

## Exposure Conditions

Band	ISM 2.4 GHz Band	TSL Permittivity	40.6
Frequency [MHz]   Channel Number	2440.000   19	TSL Conductivity [S/m]	1.87
Group   UID	Bluetooth   10670-CAA	Phantom Section   TSL	Flat   HSL
Conversion Factor	7.33	Test Distance [mm]	5.00

## Hardware Setup

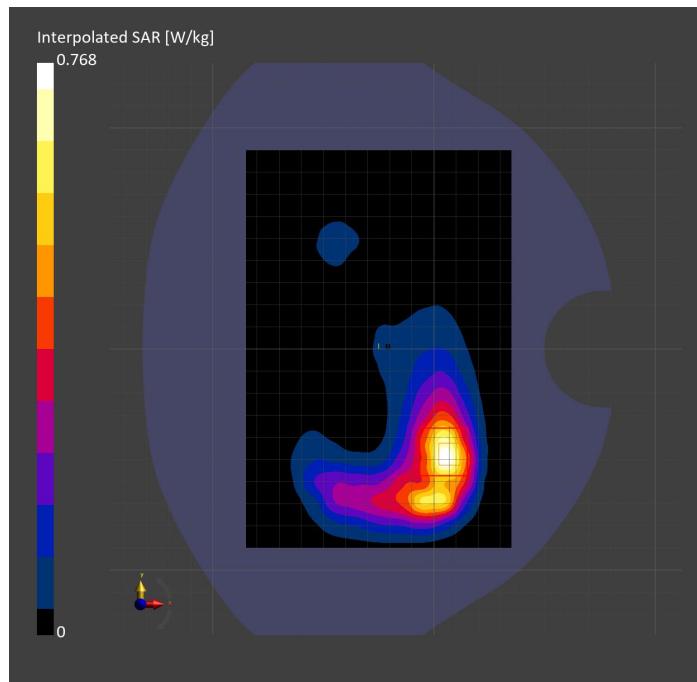
Probe   Calibration Date	EX3DV4 - SN3772   2023-02-13	Phantom	Twin-SAM V8.0 (30deg probe tilt)
DAE   Calibration Date	DAE4 Sn1359   2023-01-24	TSL Type	HBBL-600-10000
Software Version	16.2.4.2524		

## Scan Setup

	Area Scan	Zoom Scan
Grid Extents [mm]	120.0 x 180.0	30.0 x 30.0 x 30.0
Grid Steps [mm]	10.0 x 10.0	5.0 x 5.0 x 1.5
Sensor Surface [mm]	3.0	1.4
Graded Grid	N/A	Yes
M2/M1 [%]		80.6
Dist 3dB Peak [mm]		7.9

## Measurement Results

	Area Scan	Zoom Scan
psSAR1g [W/Kg]	0.371	<b>0.374</b>
psSAR10g [W/Kg]	0.179	<b>0.171</b>
Power Drift [dB]	N/A	0.06



# Measurement Report for ISM 2.4 GHz Band: IEEE 802.15.1 Bluetooth (GFSK, DH5), CHEEK

## Exposure Conditions

Band	ISM 2.4 GHz Band	TSL Permittivity	39.6
Frequency [MHz]   Channel Number	2440.000   19	TSL Conductivity [S/m]	1.73
Group   UID	Bluetooth   10670-CAA	Phantom Section   TSL	LeftHead   HSL
Conversion Factor	7.64	Test Distance [mm]	0.00

## Hardware Setup

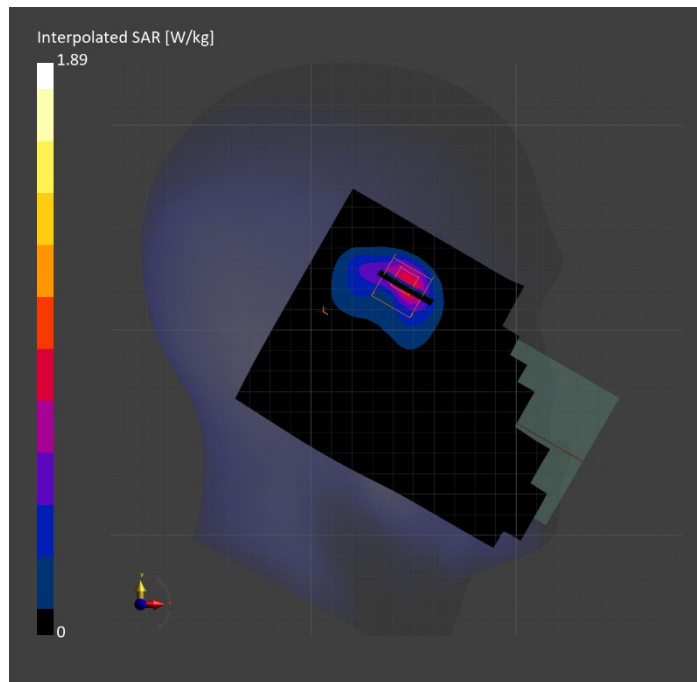
Probe   Calibration Date	EX3DV4 - SN7587   2023-04-18	Phantom	Twin-SAM V8.0 (30deg probe tilt)
DAE   Calibration Date	DAE4 Sn1239   2023-03-16	TSL Type	HBBL-600-10000
Software Version	16.2.4.2524		

## Scan Setup

	Area Scan	Zoom Scan
Grid Extents [mm]	120.0 x 180.0	30.0 x 30.0 x 30.0
Grid Steps [mm]	10.0 x 10.0	5.0 x 5.0 x 1.5
Sensor Surface [mm]	3.0	1.4
Graded Grid	N/A	Yes
M2/M1 [%]		75.0
Dist 3dB Peak [mm]		6.2

## Measurement Results

	Area Scan	Zoom Scan
psSAR1g [W/Kg]	0.701	<b>0.778</b>
psSAR10g [W/Kg]	0.323	<b>0.328</b>
Power Drift [dB]	N/A	-0.13



# Measurement Report for ISM 2.4 GHz Band: IEEE 802.15.1 Bluetooth (GFSK, DH5), EDGE RIGHT

## Exposure Conditions

Band	ISM 2.4 GHz Band	TSL Permittivity	39.6
Frequency [MHz]   Channel Number	2440.000   19	TSL Conductivity [S/m]	1.73
Group   UID	Bluetooth   10670-CAA	Phantom Section   TSL	Flat   HSL
Conversion Factor	7.64	Test Distance [mm]	5.00

## Hardware Setup

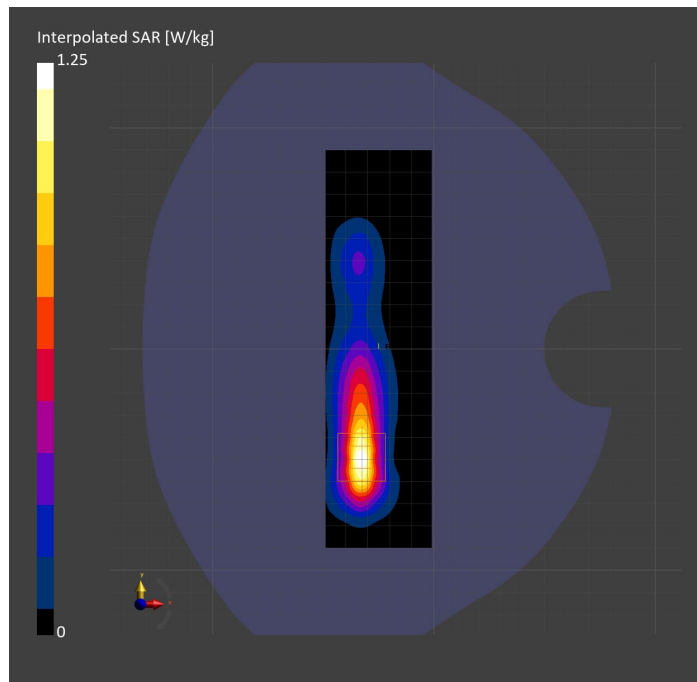
Probe   Calibration Date	EX3DV4 - SN7587   2023-04-18	Phantom	Twin-SAM V8.0 (30deg probe tilt)
DAE   Calibration Date	DAE4 Sn1239   2023-03-16	TSL Type	HBBL-600-10000
Software Version	16.2.4.2524		

## Scan Setup

	Area Scan	Zoom Scan
Grid Extents [mm]	48.0 x 180.0	30.0 x 30.0 x 30.0
Grid Steps [mm]	8.0 x 10.0	5.0 x 5.0 x 1.5
Sensor Surface [mm]	3.0	1.4
Graded Grid	N/A	Yes
M2/M1 [%]		80.1
Dist 3dB Peak [mm]		7.0

## Measurement Results

	Area Scan	Zoom Scan
psSAR1g [W/Kg]	0.547	<b>0.582</b>
psSAR10g [W/Kg]	0.250	<b>0.254</b>
Power Drift [dB]	N/A	0.02



# Measurement Report for Custom Band: CW, EDGE BOTTOM

## Exposure Conditions

Band	Custom Band	TSL Permittivity	42.1
Frequency [MHz]   Channel Number	1625.100   262466	TSL Conductivity [S/m]	1.24
Group   UID	CW   0--	Phantom Section   TSL	Flat   HSL
Conversion Factor	8.86	Test Distance [mm]	5.00

## Hardware Setup

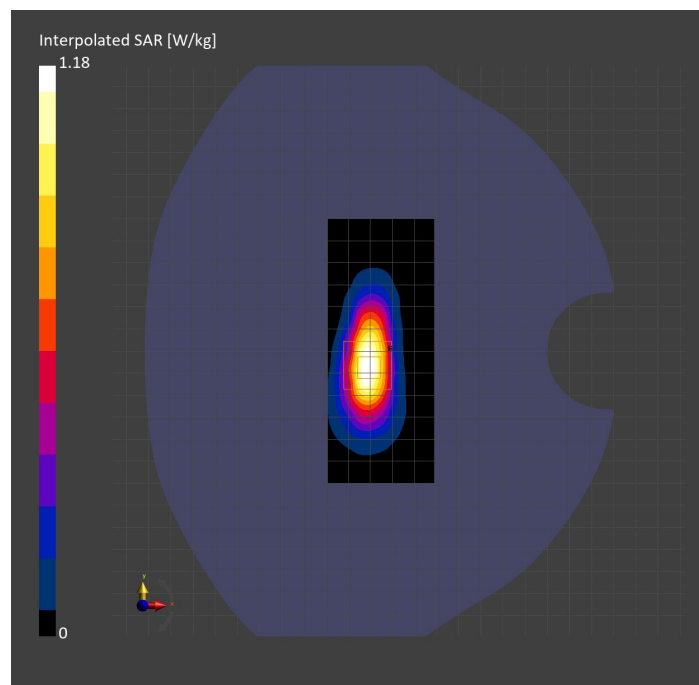
Probe   Calibration Date	EX3DV4 - SN3989   2023-01-26	Phantom	Twin-SAM V8.0 (30deg probe tilt)
DAE   Calibration Date	DAE4 Sn1257   2022-09-20	TSL Type	HBBL-600-10000
Software Version	16.2.4.2524		

## Scan Setup

	Area Scan	Zoom Scan
Grid Extents [mm]	48.0 x 120.0	30.0 x 30.0 x 30.0
Grid Steps [mm]	8.0 x 15.0	6.0 x 6.0 x 1.5
Sensor Surface [mm]	3.0	1.4
Graded Grid	N/A	Yes
M2/M1 [%]		84.6
Dist 3dB Peak [mm]		7.2

## Measurement Results

	Area Scan	Zoom Scan
psSAR1g [W/Kg]	0.649	<b>0.656</b>
psSAR10g [W/Kg]	0.327	<b>0.330</b>
Power Drift [dB]	N/A	0.06



# Measurement Report for Custom Band: CW, BACK

## Exposure Conditions

Band	Custom Band	TSL Permittivity	41.3
Frequency [MHz]   Channel Number	1617.600   262391	TSL Conductivity [S/m]	1.25
Group   UID	CW   0--	Phantom Section   TSL	Flat   HSL
Conversion Factor	8.86	Test Distance [mm]	5.00

## Hardware Setup

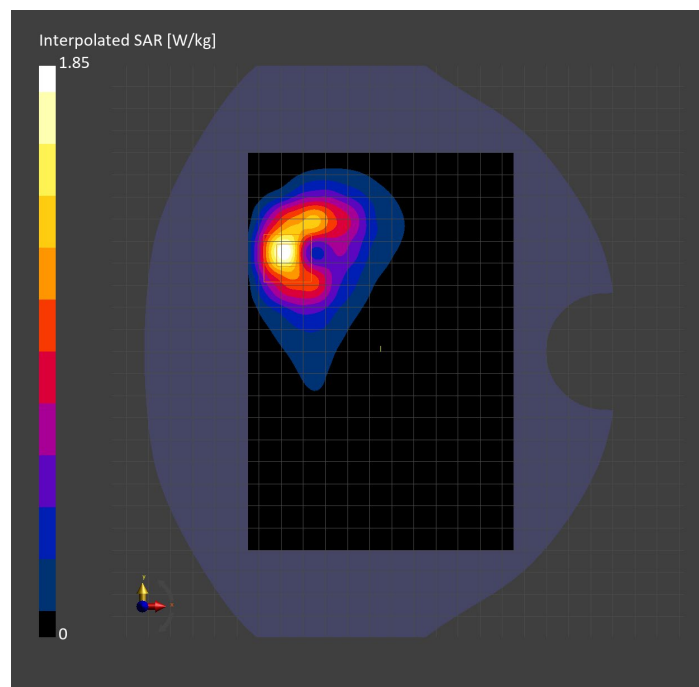
Probe   Calibration Date	EX3DV4 - SN3989   2023-01-26	Phantom	Twin-SAM V8.0 (30deg probe tilt)
DAE   Calibration Date	DAE4 Sn1257   2022-09-20	TSL Type	HBBL-600-10000
Software Version	16.2.4.2524		

## Scan Setup

	Area Scan	Zoom Scan
Grid Extents [mm]	120.0 x 180.0	30.0 x 30.0 x 30.0
Grid Steps [mm]	15.0 x 15.0	6.0 x 6.0 x 1.5
Sensor Surface [mm]	3.0	1.4
Graded Grid	N/A	Yes
M2/M1 [%]		81.3
Dist 3dB Peak [mm]		7.3

## Measurement Results

	Area Scan	Zoom Scan
psSAR1g [W/Kg]	0.786	<b>0.930</b>
psSAR10g [W/Kg]	0.409	<b>0.447</b>
Power Drift [dB]	N/A	-0.01



# Measurement Report for Custom Band: Pulse Waveform (200Hz, 10%), CHEEK

## Exposure Conditions

Band	Custom Band	TSL Permittivity	35.0
Frequency [MHz]   Channel Number	5786.300   18	TSL Conductivity [S/m]	5.05
Group   UID	CW   10658-AAB	Phantom Section   TSL	RightHead   HSL
Conversion Factor	5.15	Test Distance [mm]	0.00

## Hardware Setup

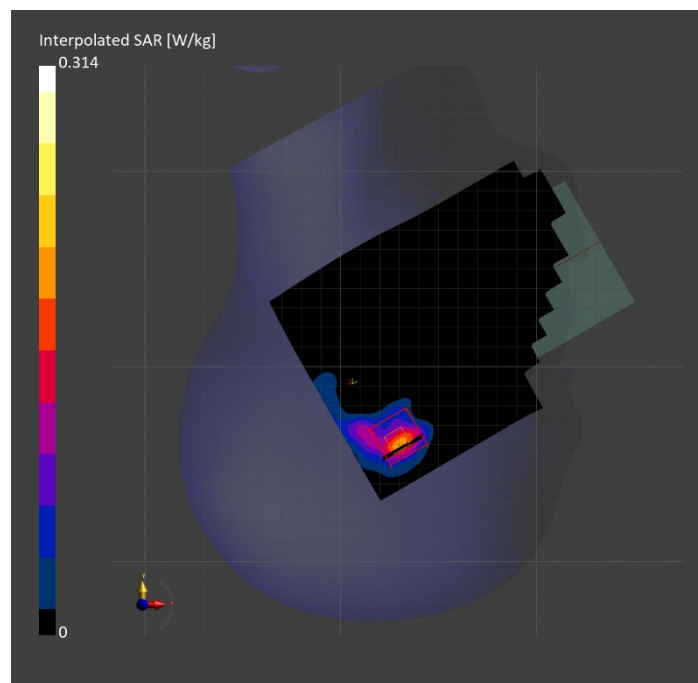
Probe   Calibration Date	EX3DV4 - SN3902   2023-03-17	Phantom	Twin-SAM V5.0 (30deg probe tilt)
DAE   Calibration Date	DAE4 Sn1439   2023-03-16	TSL Type	HBBL-600-10000
Software Version	16.2.4.2524		

## Scan Setup

	Area Scan	Zoom Scan
Grid Extents [mm]	120.0 x 180.0	24.0 x 24.0 x 22.0
Grid Steps [mm]	10.0 x 10.0	4.0 x 4.0 x 1.4
Sensor Surface [mm]	3.0	1.4
Graded Grid	N/A	Yes
M2/M1 [%]		56.8
Dist 3dB Peak [mm]		4.8

## Measurement Results

	Area Scan	Zoom Scan
psSAR1g [W/Kg]	0.041	<b>0.048</b>
psSAR10g [W/Kg]	0.014	<b>0.013</b>
Power Drift [dB]	N/A	N/A





# Measurement Report for Custom Band: Pulse Waveform (200Hz, 10%), BACK

## Exposure Conditions

Band	Custom Band	TSL Permittivity	35.0
Frequency [MHz]   Channel Number	5786.300   18	TSL Conductivity [S/m]	5.05
Group   UID	CW   10658-AAB	Phantom Section   TSL	Flat   HSL
Conversion Factor	5.15	Test Distance [mm]	5.00

## Hardware Setup

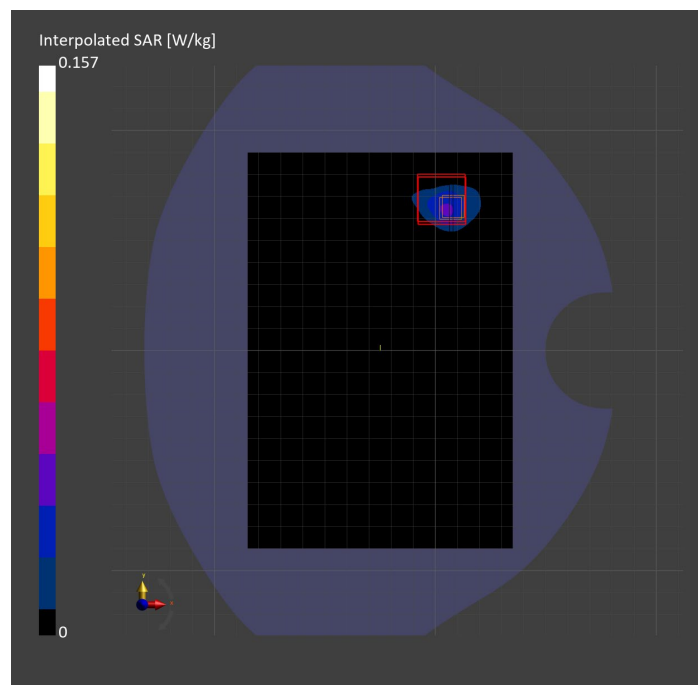
Probe   Calibration Date	EX3DV4 - SN3902   2023-03-17	Phantom	Twin-SAM V5.0 (30deg probe tilt)
DAE   Calibration Date	DAE4 Sn1439   2023-03-16	TSL Type	HBBL-600-10000
Software Version	16.2.4.2524		

## Scan Setup

	Area Scan	Zoom Scan
Grid Extents [mm]	120.0 x 180.0	24.0 x 24.0 x 22.0
Grid Steps [mm]	10.0 x 10.0	4.0 x 4.0 x 1.4
Sensor Surface [mm]	3.0	1.4
Graded Grid	N/A	Yes
M2/M1 [%]		60.8
Dist 3dB Peak [mm]		4.8

## Measurement Results

	Area Scan	Zoom Scan
psSAR1g [W/Kg]	0.030	<b>0.079</b>
psSAR10g [W/Kg]	0.009	<b>0.021</b>
Power Drift [dB]	N/A	0.02



# Measurement Report for Custom Band: Pulse Waveform (200Hz, 10%), EDGE LEFT

## Exposure Conditions

Band	Custom Band	TSL Permittivity	35.0
Frequency [MHz]   Channel Number	5786.300   18	TSL Conductivity [S/m]	5.05
Group   UID	CW   10658-AAB	Phantom Section   TSL	Flat   HSL
Conversion Factor	5.15	Test Distance [mm]	5.00

## Hardware Setup

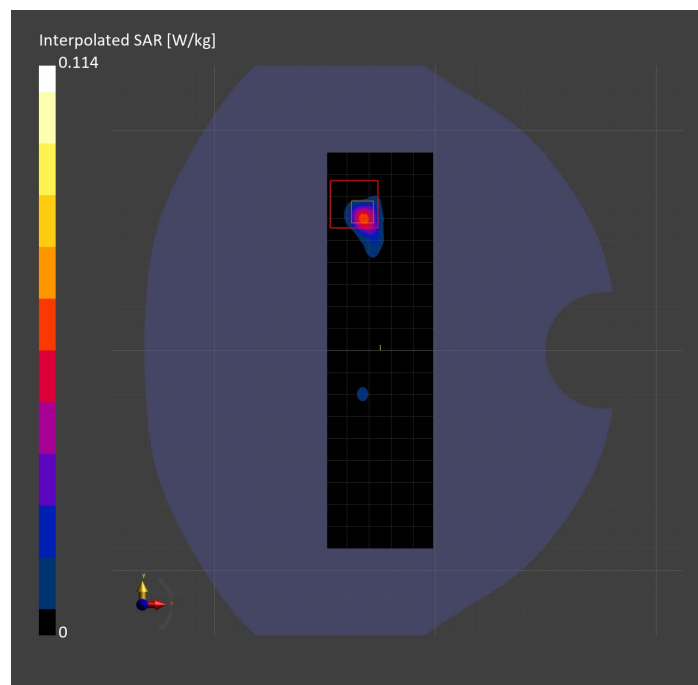
Probe   Calibration Date	EX3DV4 - SN3902   2023-03-17	Phantom	Twin-SAM V5.0 (30deg probe tilt)
DAE   Calibration Date	DAE4 Sn1439   2023-03-16	TSL Type	HBBL-600-10000
Software Version	16.2.4.2524		

## Scan Setup

	Area Scan	Zoom Scan
Grid Extents [mm]	48.0 x 180.0	24.0 x 24.0 x 22.0
Grid Steps [mm]	8.0 x 10.0	4.0 x 4.0 x 1.4
Sensor Surface [mm]	3.0	1.4
Graded Grid	N/A	Yes
M2/M1 [%]		52.4
Dist 3dB Peak [mm]		6.4

## Measurement Results

	Area Scan	Zoom Scan
psSAR1g [W/Kg]	0.030	<b>0.041</b>
psSAR10g [W/Kg]	0.006	<b>0.009</b>
Power Drift [dB]	N/A	N/A



# Measurement Report for Custom Band: CW, EDGE TOP

## Exposure Conditions

Band	Custom Band	TSL Permittivity	53.2
Frequency [MHz]   Channel Number	13.600   13600	TSL Conductivity [S/m]	0.719
Group   UID	CW   0--	Phantom Section   TSL	Flat   HSL
Conversion Factor	19.03	Test Distance [mm]	0.00

## Hardware Setup

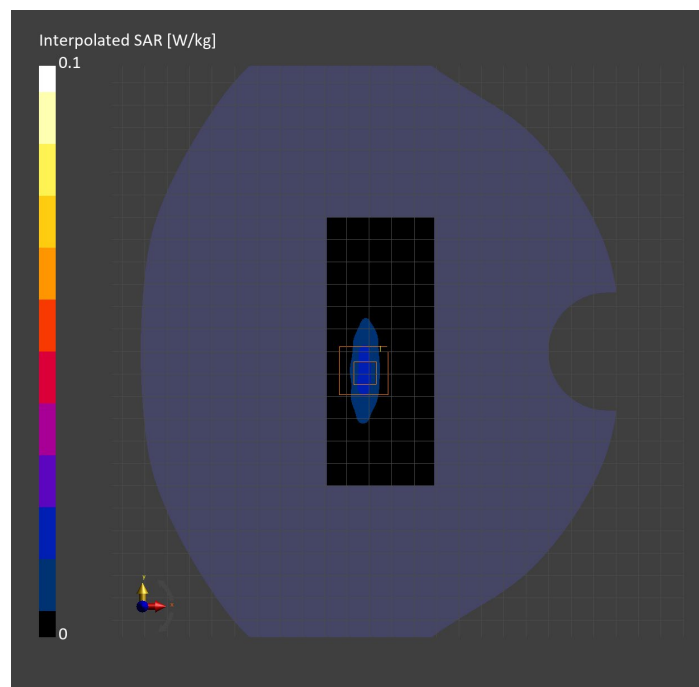
Probe   Calibration Date	EX3DV4 - SN3989   2023-01-26	Phantom	Twin-SAM V8.0 (30deg probe tilt)
DAE   Calibration Date	DAE4 Sn1257   2022-09-20	TSL Type	HBBL-600-10000
Software Version	16.2.4.2524		

## Scan Setup

	Area Scan	Zoom Scan
Grid Extents [mm]	48.0 x 120.0	30.0 x 30.0 x 30.0
Grid Steps [mm]	8.0 x 15.0	6.0 x 6.0 x 1.5
Sensor Surface [mm]	3.0	1.4
Graded Grid	N/A	Yes
M2/M1 [%]		58.7
Dist 3dB Peak [mm]		4.8

## Measurement Results

	Area Scan	Zoom Scan
psSAR1g [W/Kg]	0.017	<b>0.014</b>
psSAR10g [W/Kg]	0.009	<b>0.005</b>
Power Drift [dB]	N/A	-0.19



# Band n41: 5G NR (DFT-s-OFDM, 1 RB, 100 MHz, QPSK, 30 kHz) RBPosition:Mid AntennaCfg:SISO, EDGE RIGHT

## Exposure Conditions

Band	Band n41	TSL Permittivity	39.6
Frequency [MHz]   Channel Number	2592.990   518598	TSL Conductivity [S/m]	1.93
Group   UID	5G NR FR1 TDD   10866-AAF	Phantom Section   TSL	Flat   HSL
Conversion Factor	7.39	Test Distance [mm]	25.00

## Hardware Setup

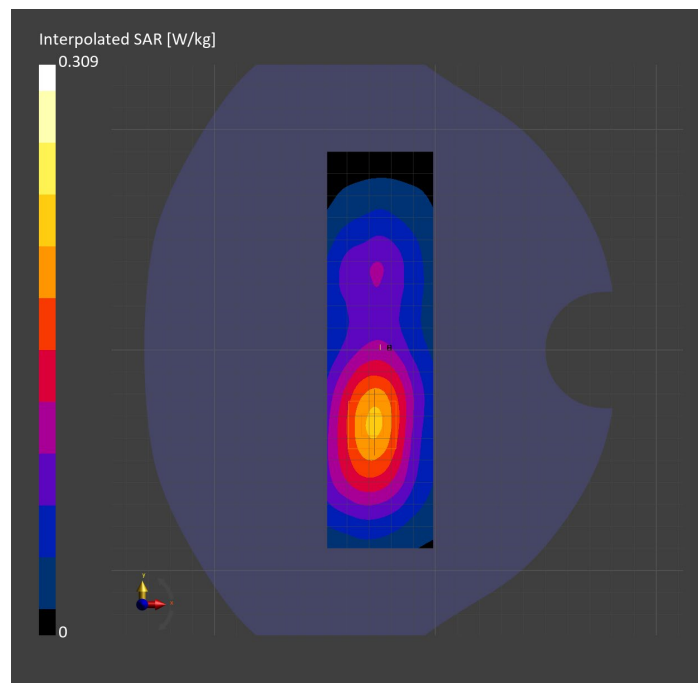
Probe   Calibration Date	EX3DV4 - SN7448   2023-02-14	Phantom	Twin-SAM V5.0 (30deg probe tilt)
DAE   Calibration Date	DAE4 Sn1472   2023-01-23	TSL Type	HBBL-600-10000
Software Version	16.2.4.2524		

## Scan Setup

	Area Scan	Zoom Scan
Grid Extents [mm]	48.0 x 180.0	30.0 x 30.0 x 30.0
Grid Steps [mm]	8.0 x 10.0	5.0 x 5.0 x 1.5
Sensor Surface [mm]	3.0	1.4
Graded Grid	N/A	Yes
M2/M1 [%]		82.5
Dist 3dB Peak [mm]		> 15.0
Peak SAR [W/kg]   SAR Peak Location [mm]	N/A	0.309   [-27.4, -36.0, -207.0]

## Measurement Results

	Area Scan	Zoom Scan
psSAR1g [W/Kg]	0.172	<b>0.168</b>
psSAR10g [W/Kg]	0.095	<b>0.093</b>
Power Drift [dB]	N/A	0.03



**Band n77: 5G NR (DFT-s-OFDM, 50% RB, 100 MHz, QPSK, 30 kHz) RBPosition:Mid  
AntennaCfg:SISO, BACK**

**Exposure Conditions**

Band	Band n77	TSL Permittivity	39.3
Frequency [MHz]   Channel Number	3858.000   657200	TSL Conductivity [S/m]	3.13
Group   UID	5G NR FR1 TDD   10917-AAD	Phantom Section   TSL	Flat   HSL
Conversion Factor	7.12	Test Distance [mm]	25.00

**Hardware Setup**

Probe   Calibration Date	EX3DV4 - SN3989   2023-01-26	Phantom	Twin-SAM V8.0 (30deg probe tilt)
DAE   Calibration Date	DAE4 Sn1547   2023-04-18	TSL Type	HBBL-600-10000
Software Version	16.2.4.2524		

**Scan Setup**

	Area Scan	Zoom Scan
Grid Extents [mm]	120.0 x 180.0	30.0 x 30.0 x 28.0
Grid Steps [mm]	10.0 x 10.0	5.0 x 5.0 x 1.4
Sensor Surface [mm]	3.0	1.4
Graded Grid	N/A	Yes
M2/M1 [%]		76.1
Dist 3dB Peak [mm]		18.5
Peak SAR [W/kg]   SAR Peak Location [mm]	N/A	0.586   [11.0, -65.0, -207.0]

**Measurement Results**

	Area Scan	Zoom Scan
psSAR1g [W/Kg]	0.255	<b>0.255</b>
psSAR10g [W/Kg]	0.122	<b>0.123</b>
Power Drift [dB]	N/A	0.09

