

# Measurement Report for PCS 1900: GPRS-FDD (TDMA, GMSK, TN 0-1), TILT

## Exposure Conditions

Band	PCS 1900	TSL Permittivity	38.2
Frequency [MHz]   Channel Number	1880.000   661	TSL Conductivity [S/m]	1.40
Group   UID	GSM   10024-DAC	Phantom Section   TSL	RightHead   HSL
Conversion Factor	7.53	Test Distance [mm]	0.00

## Hardware Setup

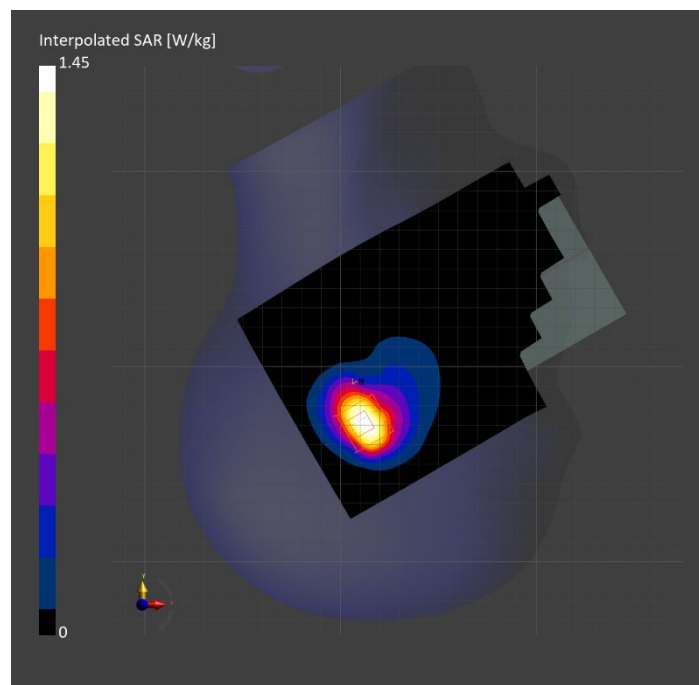
Probe   Calibration Date	EX3DV4 - SN7807   2023-04-11	Phantom	Twin-SAM V8.0 (30deg probe tilt)
DAE   Calibration Date	DAE4 Sn1799   2023-04-04	TSL Type	HBBL-600-10000
Software Version	16.2.4.2524		

## Scan Setup

	Area Scan	Zoom Scan
Grid Extents [mm]	120.0 x 210.0	30.0 x 30.0 x 30.0
Grid Steps [mm]	15.0 x 15.0	6.0 x 6.0 x 1.5
Sensor Surface [mm]	3.0	1.4
Graded Grid	N/A	Yes
M2/M1 [%]		79.0
Dist 3dB Peak [mm]		8.5

## Measurement Results

	Area Scan	Zoom Scan
psSAR1g [W/Kg]	0.708	<b>0.689</b>
psSAR10g [W/Kg]	0.369	<b>0.337</b>
Power Drift [dB]	N/A	-0.04



# Measurement Report for Band 2: UMTS-FDD (WCDMA), CHEEK

## Exposure Conditions

Band	Band 2	TSL Permittivity	38.3
Frequency [MHz]   Channel Number	1880.000   9400	TSL Conductivity [S/m]	1.43
Group   UID	WCDMA   10011-CAC	Phantom Section   TSL	RightHead   HSL
Conversion Factor	7.53	Test Distance [mm]	0.00

## Hardware Setup

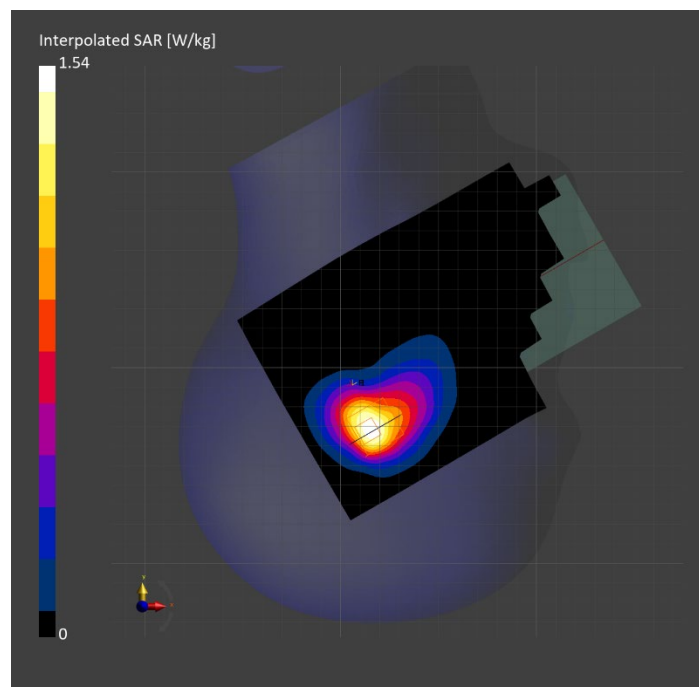
Probe   Calibration Date	EX3DV4 - SN7807   2023-04-11	Phantom	Twin-SAM V8.0 (30deg probe tilt)
DAE   Calibration Date	DAE4 Sn1799   2023-04-04	TSL Type	HBBL-600-10000
Software Version	16.2.4.2524		

## Scan Setup

	Area Scan	Zoom Scan
Grid Extents [mm]	120.0 x 210.0	30.0 x 30.0 x 30.0
Grid Steps [mm]	15.0 x 15.0	6.0 x 6.0 x 1.5
Sensor Surface [mm]	3.0	1.4
Graded Grid	N/A	Yes
M2/M1 [%]		76.7
Dist 3dB Peak [mm]		8.6

## Measurement Results

	Area Scan	Zoom Scan
psSAR1g [W/Kg]	0.770	<b>0.731</b>
psSAR10g [W/Kg]	0.420	<b>0.391</b>
Power Drift [dB]	N/A	0.03



# Measurement Report for Band 66: LTE-FDD (SC-FDMA, 1 RB, 20 MHz, QPSK) RBPosition:Mid AntennaCfg:SISO, TILT

## Exposure Conditions

Band	Band 66	TSL Permittivity	40.2
Frequency [MHz]   Channel Number	1770.000   132572	TSL Conductivity [S/m]	1.32
Group   UID	LTE-FDD   10169-CAF	Phantom Section   TSL	RightHead   HSL
Conversion Factor	8.98	Test Distance [mm]	0.00

## Hardware Setup

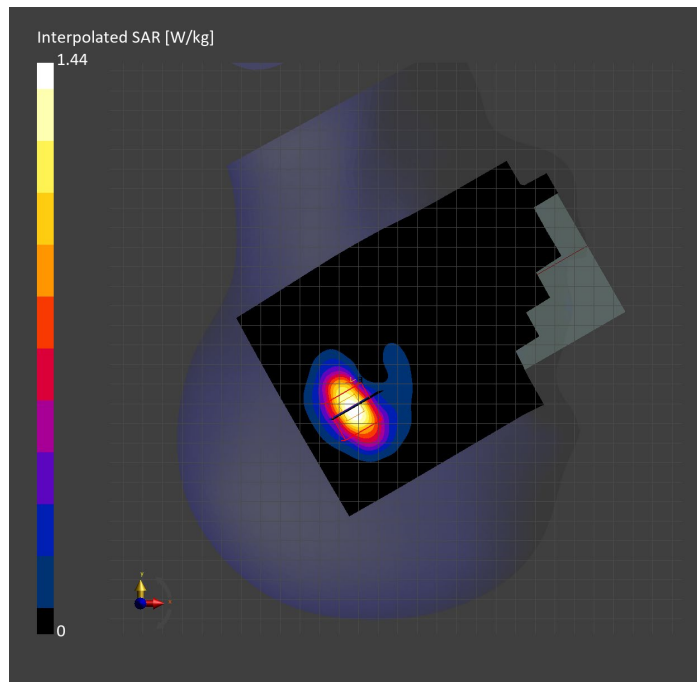
Probe   Calibration Date	EX3DV4 - SN3989   2023-01-26	Phantom	Twin-SAM V8.0 (30deg probe tilt)
DAE   Calibration Date	DAE4 Sn1257   2022-09-20	TSL Type	HBBL-600-10000
Software Version	16.2.4.2524		

## Scan Setup

	Area Scan	Zoom Scan
Grid Extents [mm]	120.0 x 210.0	30.0 x 30.0 x 30.0
Grid Steps [mm]	15.0 x 15.0	6.0 x 6.0 x 1.5
Sensor Surface [mm]	3.0	1.4
Graded Grid	N/A	Yes
M2/M1 [%]		83.4
Dist 3dB Peak [mm]		6.5

## Measurement Results

	Area Scan	Zoom Scan
psSAR1g [W/Kg]	0.725	<b>0.723</b>
psSAR10g [W/Kg]	0.356	<b>0.344</b>
Power Drift [dB]	N/A	-0.04



# Measurement Report for Band n41: 5G NR (DFT-s-OFDM, 50% RB, 100 MHz, QPSK, 30 kHz) RBPosition:Mid AntennaCfg:SISO, CHEEK

## Exposure Conditions

Band	Band n41	TSL Permittivity	37.7
Frequency [MHz]   Channel Number	2592.990   518598	TSL Conductivity [S/m]	2.00
Group   UID	5G NR FR1 TDD   10917-AAD	Phantom Section   TSL	LeftHead   HSL
Conversion Factor	7.32	Test Distance [mm]	0.00

## Hardware Setup

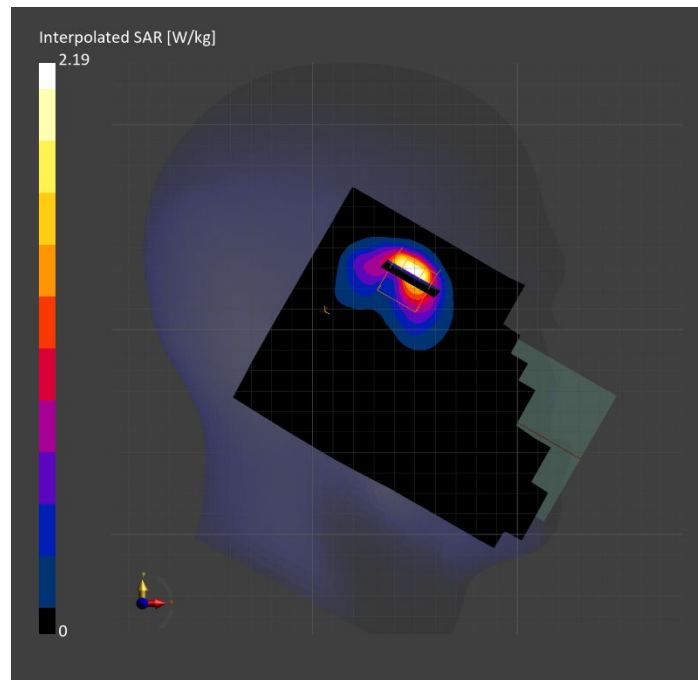
Probe   Calibration Date	EX3DV4 - SN3885   2022-09-20	Phantom	Twin-SAM V5.0 (30deg probe tilt)
DAE   Calibration Date	DAE4 Sn1548   2023-02-14	TSL Type	HBBL-600-10000
Software Version	16.2.4.2524		

## Scan Setup

	Area Scan	Zoom Scan
Grid Extents [mm]	120.0 x 180.0	30.0 x 30.0 x 30.0
Grid Steps [mm]	10.0 x 10.0	5.0 x 5.0 x 1.5
Sensor Surface [mm]	3.0	1.4
Graded Grid	N/A	Yes
M2/M1 [%]		72.3
Dist 3dB Peak [mm]		5.5

## Measurement Results

	Area Scan	Zoom Scan
psSAR1g [W/Kg]	0.766	<b>0.795</b>
psSAR10g [W/Kg]	0.319	<b>0.313</b>
Power Drift [dB]	N/A	0.02



# Measurement Report for WLAN 2.4GHz: IEEE 802.11b WiFi 2.4 GHz (DSSS, 1 Mbps, 99pc duty cycle), CHEEK

## Exposure Conditions

Band	WLAN 2.4GHz	TSL Permittivity	37.8
Frequency [MHz]   Channel Number	2412.000   1	TSL Conductivity [S/m]	1.81
Group   UID	WLAN   10415-AAA	Phantom Section   TSL	LeftHead   HSL
Conversion Factor	7.33	Test Distance [mm]	0.00

## Hardware Setup

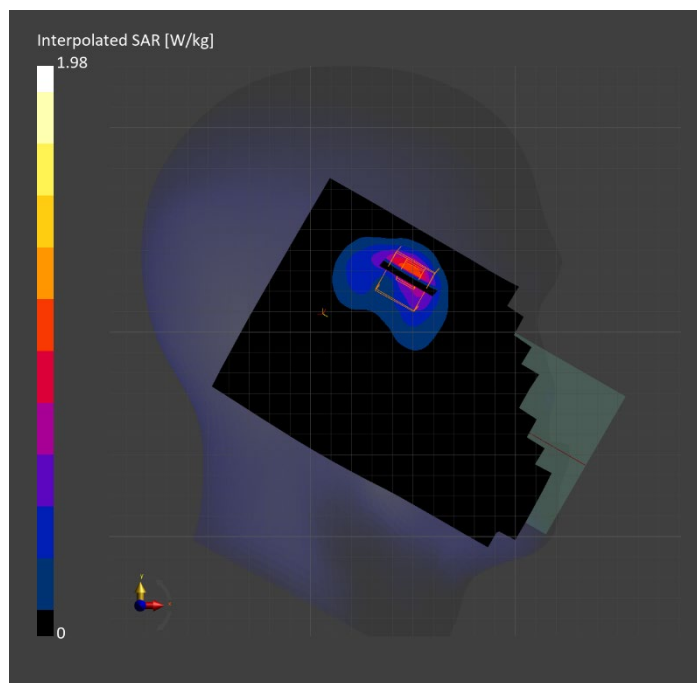
Probe   Calibration Date	EX3DV4 - SN3772   2023-02-13	Phantom	Twin-SAM V8.0 (30deg probe tilt)
DAE   Calibration Date	DAE4 Sn1359   2023-01-24	TSL Type	HBBL-600-10000
Software Version	16.2.4.2524		

## Scan Setup

	Area Scan	Zoom Scan
Grid Extents [mm]	120.0 x 200.0	30.0 x 30.0 x 30.0
Grid Steps [mm]	10.0 x 10.0	5.0 x 5.0 x 1.5
Sensor Surface [mm]	3.0	1.4
Graded Grid	N/A	Yes
M2/M1 [%]		74.6
Dist 3dB Peak [mm]		5.5

## Measurement Results

	Area Scan	Zoom Scan
psSAR1g [W/Kg]	0.817	<b>0.821</b>
psSAR10g [W/Kg]	0.357	<b>0.354</b>
Power Drift [dB]	N/A	0.03



# Measurement Report for WLAN 5GHz: IEEE 802.11ac WiFi (80MHz, MCS0, 99pc duty cycle), CHEEK

## Exposure Conditions

Band	WLAN 5GHz	TSL Permittivity	36.2
Frequency [MHz]   Channel Number	5775.000   155	TSL Conductivity [S/m]	5.22
Group   UID	WLAN   10544-AAD	Phantom Section   TSL	RightHead   HSL
Conversion Factor	4.86	Test Distance [mm]	0.00

## Hardware Setup

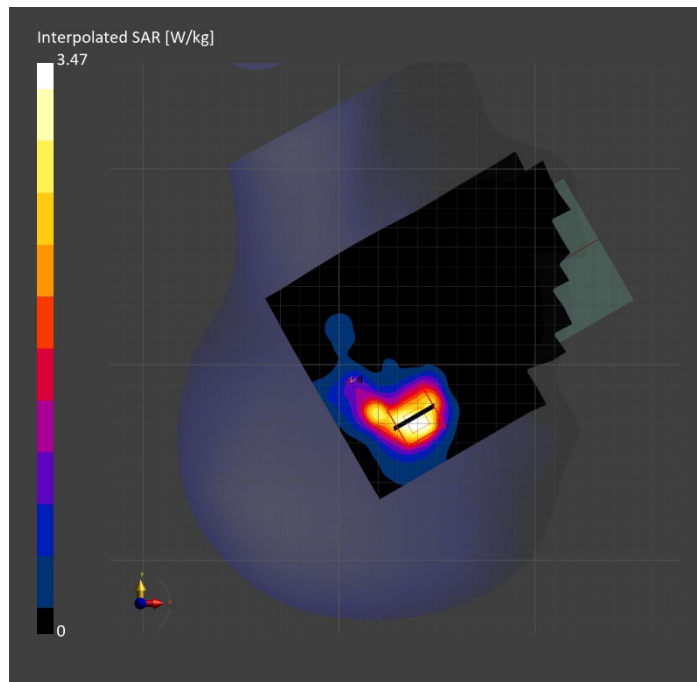
Probe   Calibration Date	EX3DV4 - SN7810   2023-04-25	Phantom	Twin-SAM V8.0 (30deg probe tilt)
DAE   Calibration Date	DAE4 Sn1439   2023-03-16	TSL Type	HBBL-600-10000
Software Version	16.2.4.2524		

## Scan Setup

	Area Scan	Zoom Scan
Grid Extents [mm]	120.0 x 180.0	24.0 x 24.0 x 22.0
Grid Steps [mm]	10.0 x 10.0	4.0 x 4.0 x 1.4
Sensor Surface [mm]	3.0	1.4
Graded Grid	N/A	Yes
M2/M1 [%]		56.8
Dist 3dB Peak [mm]		5.7

## Measurement Results

	Area Scan	Zoom Scan
psSAR1g [W/Kg]	0.603	<b>0.815</b>
psSAR10g [W/Kg]	0.236	<b>0.265</b>
Power Drift [dB]	N/A	0.02



# Measurement Report for n258: CW, EDGE RIGHT

## Exposure Conditions

<b>Band</b>	Custom Band	<b>Phantom Section</b>	5G
<b>Frequency [MHz]   Channel Number</b>	24350.0   2018333	<b>Conversion Factor</b>	1.0
<b>Group   UID</b>	CW, 0--	<b>Position   Test Distance [mm]</b>	EDGE RIGHT   2.00

## Hardware Setup

<b>Probe   Calibration Date</b>	EUmmWV4 - SN9589_F1-55GHz   2022-09-20	<b>Phantom</b>	mmWave   xxxx
<b>DAE   Calibration Date</b>	DAE4 Sn1377   2022-09-15	<b>Medium</b>	Air   -
<b>Software Version</b>	3.2.0.1840		

## Scan Setup

<b>Scan Type</b>	5G Scan	<b>Grid Extents [mm]</b>	25.0 x 25.0
<b>Grid Steps [lambda]</b>	0.1657954629531585 x 0.1657954629531585	<b>Sensor Surface [mm]</b>	2.0

## Measurement Results

<b>Avg. Area [cm<sup>2</sup>]</b>	4.00
<b>psPDn+ [W/m<sup>2</sup>]</b>	2.18
<b>psPDtot+ [W/m<sup>2</sup>]</b>	3.12
<b>psPDmod+ [W/m<sup>2</sup>]</b>	3.77
<b>E<sub>max</sub> [V/m]</b>	95.0
<b>Power Drift [dB]</b>	0.01

