

# System Performance Check Report for D2450V2 - SN706

## Exposure Conditions

Frequency [MHz]   Channel Number	2450.000   0	TSL Permittivity	37.7
Group   UID	CW   0--	TSL Conductivity [S/m]	1.85
Conversion Factor	7.33	Phantom Section   TSL	Flat   HSL

## Hardware Setup

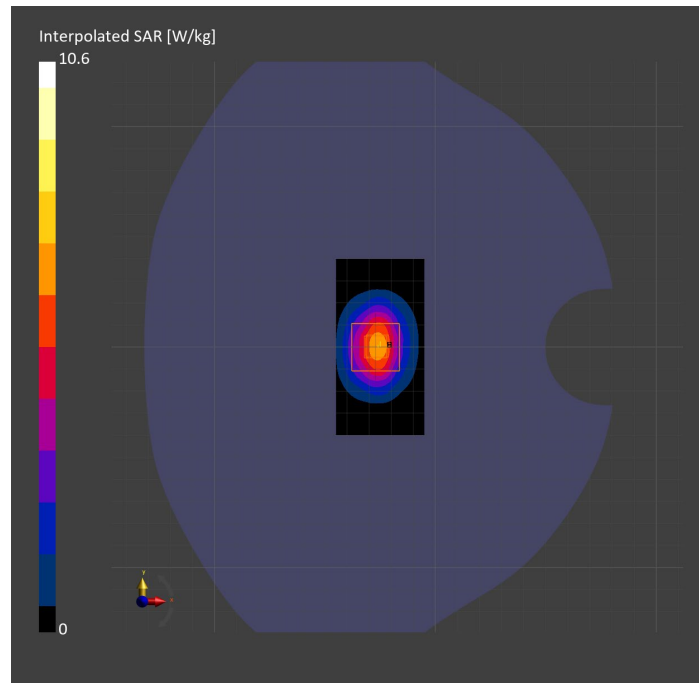
Probe   Calibration Date	EX3DV4 - SN3772   2023-02-13	Phantom	Twin-SAM V8.0 (30deg probe tilt)
DAE   Calibration Date	DAE4 Sn1359   2023-01-24	TSL Type	HBBL-600-10000
Software Version	16.2.4.2524		

## Scans Setup

	Area Scan	Zoom Scan
Grid Extents [mm]	40.0 x 80.0	30.0 x 30.0 x 30.0
Grid Steps [mm]	10.0 x 10.0	5.0 x 5.0 x 1.5
Sensor Surface [mm]	3.0	1.4
Graded Grid	N/A	Yes
M2/M1 [%]		80.8
Dist 3dB Peak [mm]		9.0

## Measurement Results

	Area Scan	Zoom Scan
psSAR1g [W/Kg]	5.38	5.20
psSAR10g [W/Kg]	2.52	2.42
Power Drift [dB]	N/A	-0.07



# System Performance Check Report for D2450V2 - SN899

## Exposure Conditions

Frequency [MHz]   Channel Number	2450.000   0	TSL Permittivity	40.2
Group   UID	CW   0--	TSL Conductivity [S/m]	1.73
Conversion Factor	7.64	Phantom Section   TSL	Flat   HSL

## Hardware Setup

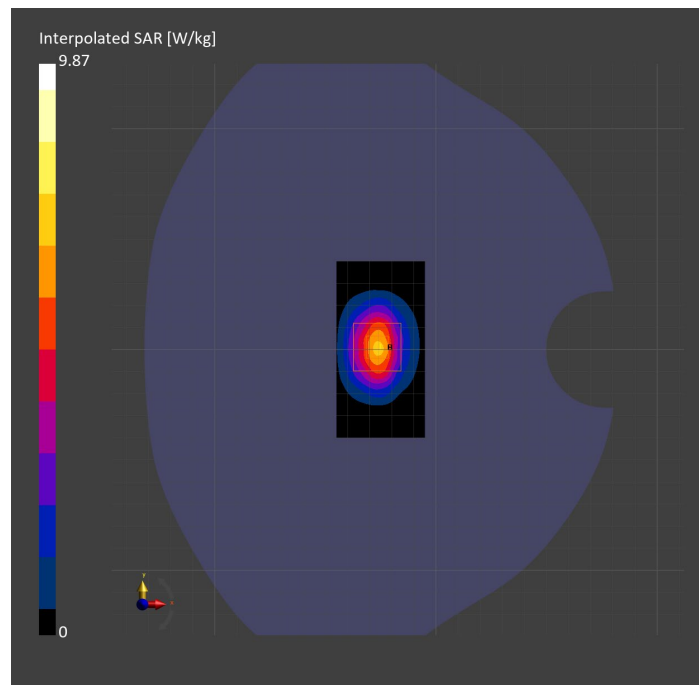
Probe   Calibration Date	EX3DV4 - SN7587   2023-04-18	Phantom	Twin-SAM V8.0 (30deg probe tilt)
DAE   Calibration Date	DAE4 Sn1239   2023-03-16	TSL Type	HBBL-600-10000
Software Version	16.2.4.2524		

## Scans Setup

	Area Scan	Zoom Scan
Grid Extents [mm]	40.0 x 80.0	30.0 x 30.0 x 30.0
Grid Steps [mm]	10.0 x 10.0	5.0 x 5.0 x 1.5
Sensor Surface [mm]	3.0	1.4
Graded Grid	N/A	Yes
M2/M1 [%]		81.6
Dist 3dB Peak [mm]		9.0

## Measurement Results

	Area Scan	Zoom Scan
psSAR1g [W/Kg]	5.25	5.10
psSAR10g [W/Kg]	2.45	2.45
Power Drift [dB]	N/A	-0.09



# System Performance Check Report for D5GHzV2 - SN1138

## Exposure Conditions

Frequency [MHz]   Channel Number	5600.000   0	TSL Permittivity	34.2
Group   UID	CW   0--	TSL Conductivity [S/m]	4.86
Conversion Factor	4.46	Phantom Section   TSL	Flat   HSL

## Hardware Setup

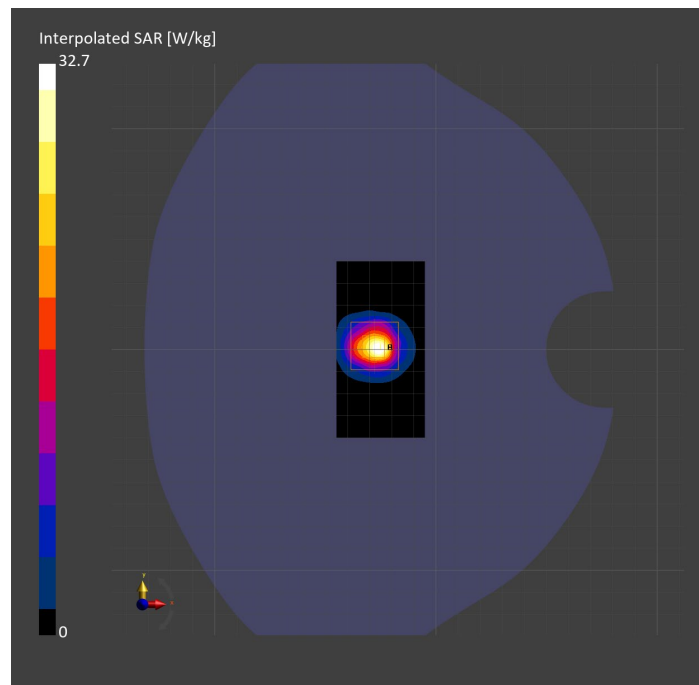
Probe   Calibration Date	EX3DV4 - SN7585   2023-04-18	Phantom	Twin-SAM V5.0 (30deg probe tilt)
DAE   Calibration Date	DAE4 Sn1797   2023-04-03	TSL Type	HBBL-600-10000
Software Version	16.2.4.2524		

## Scans Setup

	Area Scan	Zoom Scan
Grid Extents [mm]	40.0 x 80.0	22.0 x 22.0 x 22.0
Grid Steps [mm]	10.0 x 10.0	4.0 x 4.0 x 1.4
Sensor Surface [mm]	3.0	1.4
Graded Grid	N/A	Yes
M2/M1 [%]		61.1
Dist 3dB Peak [mm]		7.2

## Measurement Results

	Area Scan	Zoom Scan
psSAR1g [W/Kg]	6.76	7.72
psSAR10g [W/Kg]	2.01	2.17
Power Drift [dB]	N/A	-0.05



# System Performance Check Report for D1640V2 - SN334

## Exposure Conditions

Frequency [MHz]   Channel Number	1640.000   0	TSL Permittivity	40.3
Group   UID	CW   0--	TSL Conductivity [S/m]	1.24
Conversion Factor	8.86	Phantom Section   TSL	Flat   HSL

## Hardware Setup

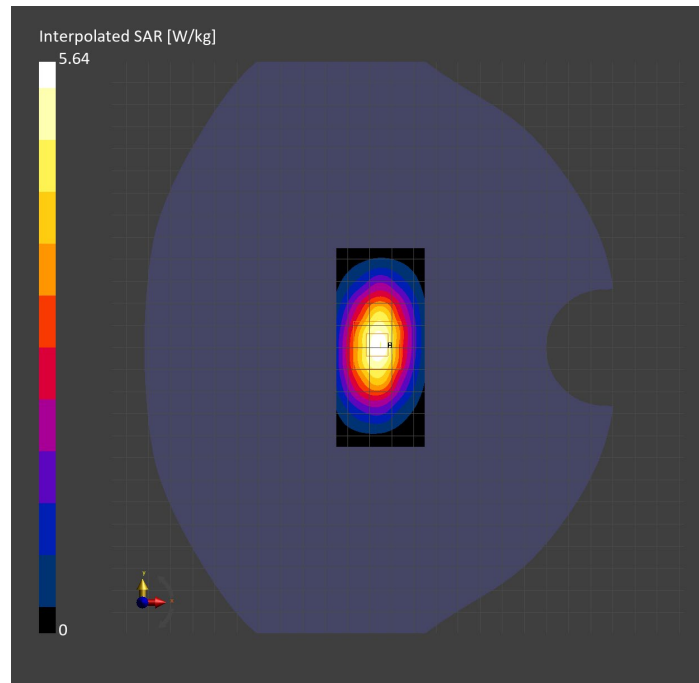
Probe   Calibration Date	EX3DV4 - SN3989   2023-01-26	Phantom	Twin-SAM V8.0 (30deg probe tilt)
DAE   Calibration Date	DAE4 Sn1257   2022-09-20	TSL Type	HBBL-600-10000
Software Version	16.2.4.2524		

## Scans Setup

	Area Scan	Zoom Scan
Grid Extents [mm]	40.0 x 90.0	30.0 x 30.0 x 30.0
Grid Steps [mm]	10.0 x 15.0	6.0 x 6.0 x 1.5
Sensor Surface [mm]	3.0	1.4
Graded Grid	N/A	Yes
M2/M1 [%]		85.7
Dist 3dB Peak [mm]		10.8

## Measurement Results

	Area Scan	Zoom Scan
psSAR1g [W/Kg]	3.35	<b>3.35</b>
psSAR10g [W/Kg]	1.85	<b>1.86</b>
Power Drift [dB]	N/A	-0.03



# System Performance Check Report for D3700V2 - SN1110

## Exposure Conditions

Frequency [MHz]   Channel Number	3700.000   0	TSL Permittivity	37.0
Group   UID	CW   0--	TSL Conductivity [S/m]	2.98
Conversion Factor	6.66	Phantom Section   TSL	Flat   HSL

## Hardware Setup

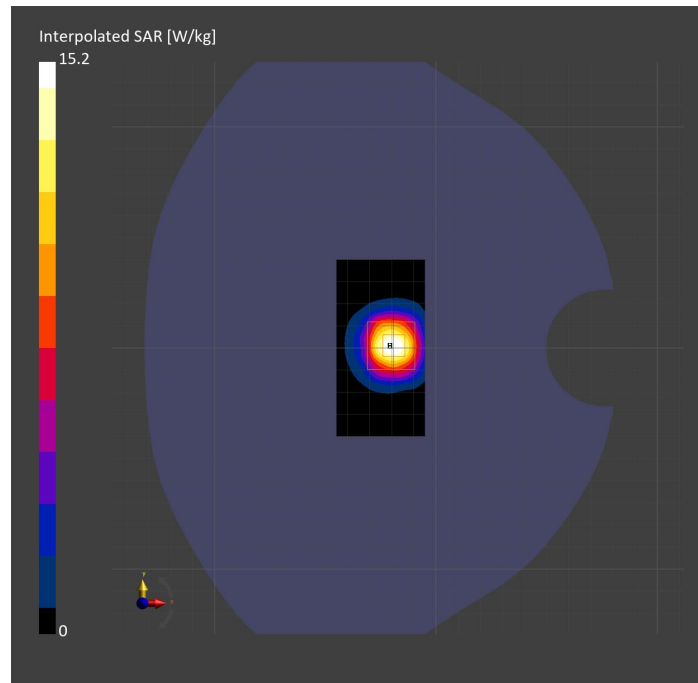
Probe   Calibration Date	EX3DV4 - SN3990   2023-02-17	Phantom	Twin-SAM V5.0 (30deg probe tilt)
DAE   Calibration Date	DAE4 Sn1545   2023-02-14	TSL Type	HBBL-600-10000
Software Version	16.2.4.2524		

## Scans Setup

	Area Scan	Zoom Scan
Grid Extents [mm]	40.0 x 80.0	28.0 x 28.0 x 28.0
Grid Steps [mm]	10.0 x 10.0	5.0 x 5.0 x 1.4
Sensor Surface [mm]	3.0	1.4
Graded Grid	N/A	Yes
M2/M1 [%]		76.1
Dist 3dB Peak [mm]		8.1

## Measurement Results

	Area Scan	Zoom Scan
psSAR1g [W/Kg]	5.06	<b>5.87</b>
psSAR10g [W/Kg]	2.02	<b>2.19</b>
Power Drift [dB]	N/A	-0.07



# System Performance Check Report for D2300V2 - SN1058

## Exposure Conditions

Frequency [MHz]   Channel Number	2300.000   0	TSL Permittivity	40.6
Group   UID	CW   0--	TSL Conductivity [S/m]	1.71
Conversion Factor	8.2	Phantom Section   TSL	Flat   HSL

## Hardware Setup

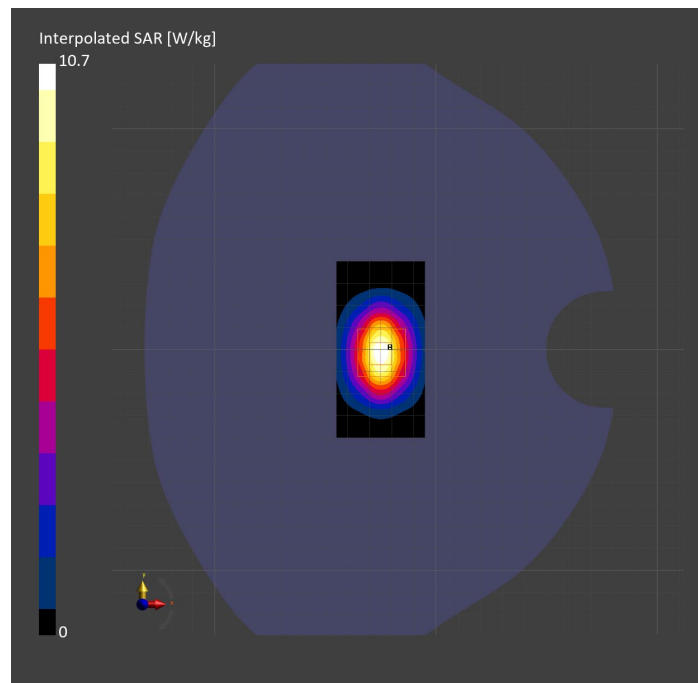
Probe   Calibration Date	EX3DV4 - SN7356   2023-03-17	Phantom	Twin-SAM V8.0 (30deg probe tilt)
DAE   Calibration Date	DAE4 Sn1798   2023-05-02	TSL Type	HBBL-600-10000
Software Version	16.2.4.2524		

## Scans Setup

	Area Scan	Zoom Scan
Grid Extents [mm]	40.0 x 80.0	30.0 x 30.0 x 30.0
Grid Steps [mm]	10.0 x 10.0	5.0 x 5.0 x 1.5
Sensor Surface [mm]	3.0	1.4
Graded Grid	N/A	Yes
M2/M1 [%]		80.3
Dist 3dB Peak [mm]		9.9

## Measurement Results

	Area Scan	Zoom Scan
psSAR1g [W/Kg]	5.32	5.29
psSAR10g [W/Kg]	2.57	2.55
Power Drift [dB]	N/A	0.02



# System Performance Check Report for CLA-13 - SN1008

## Exposure Conditions

Frequency [MHz]   Channel Number	13.000   0	TSL Permittivity	56.3
Group   UID	CW   0--	TSL Conductivity [S/m]	0.719
Conversion Factor	19.03	Phantom Section   TSL	Flat   HSL

## Hardware Setup

Probe   Calibration Date	EX3DV4 - SN3989   2023-01-26	Phantom	ELI V8.0 (20deg probe tilt)
DAE   Calibration Date	DAE4 Sn1257   2022-09-20	TSL Type	HBBL4-250V3
Software Version	16.2.4.2524		

## Scans Setup

	Area Scan	Zoom Scan
Grid Extents [mm]	40.0 x 90.0	30.0 x 30.0 x 30.0
Grid Steps [mm]	10.0 x 15.0	6.0 x 6.0 x 1.5
Sensor Surface [mm]	3.0	1.4
Graded Grid	N/A	Yes
M2/M1 [%]		75.8
Dist 3dB Peak [mm]		16.4

## Measurement Results

	Area Scan	Zoom Scan
psSAR1g [W/Kg]	0.540	<b>0.515</b>
psSAR10g [W/Kg]	0.435	<b>0.318</b>
Power Drift [dB]	N/A	-0.00

