

System Performance Check Report for D1900V2 - SN5d140

Exposure Conditions

Frequency [MHz] Channel Number	1900.000 0	TSL Permittivity	40.6
Group UID	CW 0--	TSL Conductivity [S/m]	1.41
Conversion Factor	7.73	Phantom Section TSL	Flat HSL

Hardware Setup

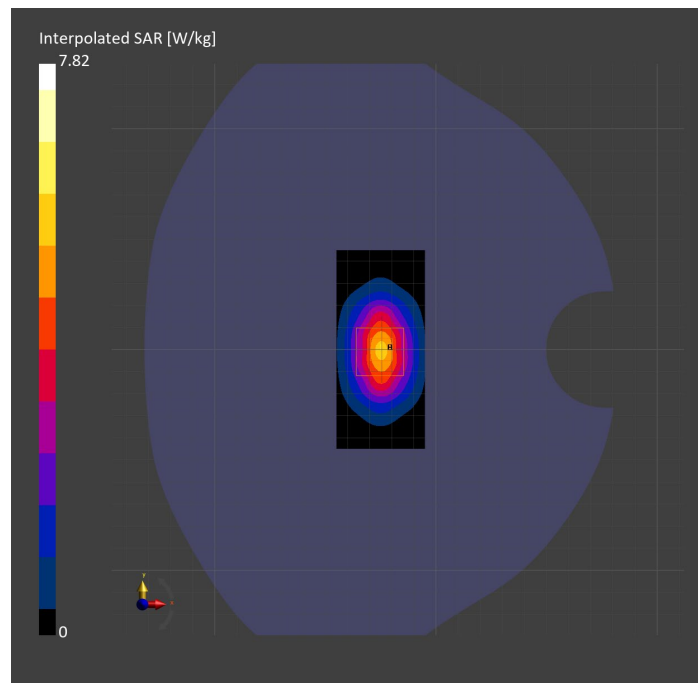
Probe Calibration Date	EX3DV4 - SN7482 2023-04-18	Phantom	Twin-SAM V8.0 (30deg probe tilt)
DAE Calibration Date	DAE4 Sn1380 2023-02-14	TSL Type	HBBL-600-10000
Software Version	16.2.4.2524		

Scans Setup

	Area Scan	Zoom Scan
Grid Extents [mm]	40.0 x 90.0	30.0 x 30.0 x 30.0
Grid Steps [mm]	10.0 x 15.0	6.0 x 6.0 x 1.5
Sensor Surface [mm]	3.0	1.4
Graded Grid	N/A	Yes
M2/M1 [%]		81.3
Dist 3dB Peak [mm]		10.8

Measurement Results

	Area Scan	Zoom Scan
psSAR1g [W/Kg]	4.34	4.26
psSAR10g [W/Kg]	2.25	2.24
Power Drift [dB]	N/A	0.01



System Performance Check Report for D1750V2 - SN1077

Exposure Conditions

Frequency [MHz] Channel Number	1750.000 0	TSL Permittivity	40.9
Group UID	CW 0--	TSL Conductivity [S/m]	1.32
Conversion Factor	8.2	Phantom Section TSL	Flat HSL

Hardware Setup

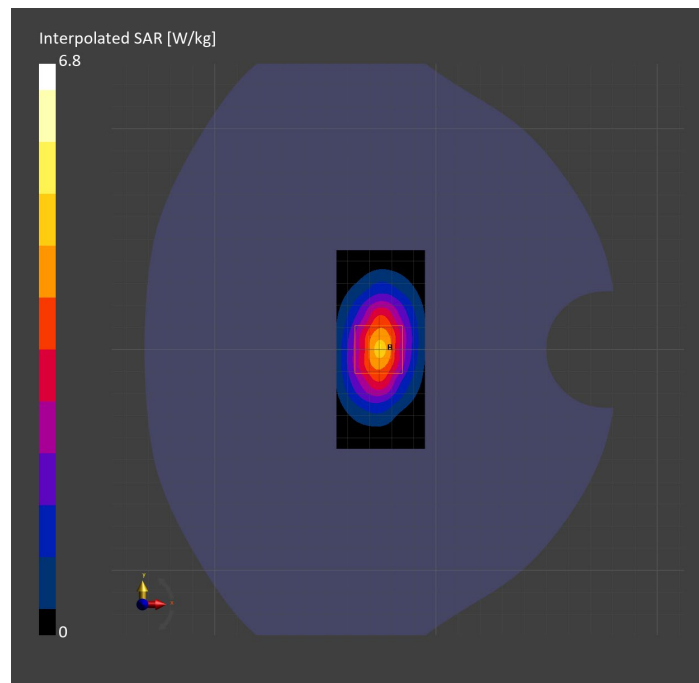
Probe Calibration Date	EX3DV4 - SN7482 2023-04-18	Phantom	Twin-SAM V8.0 (30deg probe tilt)
DAE Calibration Date	DAE4 Sn1380 2023-02-14	TSL Type	HBBL-600-10000
Software Version	16.2.4.2524		

Scans Setup

	Area Scan	Zoom Scan
Grid Extents [mm]	40.0 x 90.0	30.0 x 30.0 x 30.0
Grid Steps [mm]	10.0 x 15.0	6.0 x 6.0 x 1.5
Sensor Surface [mm]	3.0	1.4
Graded Grid	N/A	Yes
M2/M1 [%]		83.3
Dist 3dB Peak [mm]		10.8

Measurement Results

	Area Scan	Zoom Scan
psSAR1g [W/Kg]	3.79	3.75
psSAR10g [W/Kg]	2.02	2.01
Power Drift [dB]	N/A	-0.01



System Performance Check Report for D2600V2 - SN1006

Exposure Conditions

Frequency [MHz] Channel Number	2600.000 0	TSL Permittivity	39.6
Group UID	CW 0--	TSL Conductivity [S/m]	1.91
Conversion Factor	7.49	Phantom Section TSL	Flat HSL

Hardware Setup

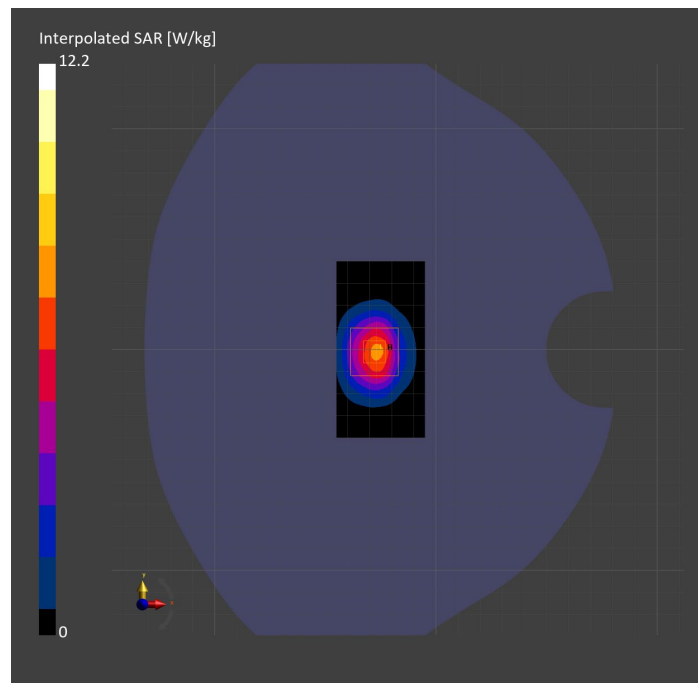
Probe Calibration Date	EX3DV4 - SN7482 2023-04-18	Phantom	Twin-SAM V8.0 (30deg probe tilt)
DAE Calibration Date	DAE4 Sn1380 2023-02-14	TSL Type	HBBL-600-10000
Software Version	16.2.4.2524		

Scans Setup

	Area Scan	Zoom Scan
Grid Extents [mm]	40.0 x 80.0	30.0 x 30.0 x 30.0
Grid Steps [mm]	10.0 x 10.0	5.0 x 5.0 x 1.5
Sensor Surface [mm]	3.0	1.4
Graded Grid	N/A	Yes
M2/M1 [%]		79.5
Dist 3dB Peak [mm]		9.0

Measurement Results

	Area Scan	Zoom Scan
psSAR1g [W/Kg]	5.72	5.78
psSAR10g [W/Kg]	2.64	2.64
Power Drift [dB]	N/A	-0.01



System Performance Check Report for D1900V2 - SN5d140

Exposure Conditions

Frequency [MHz] Channel Number	1900.000 0	TSL Permittivity	38.3
Group UID	CW 0--	TSL Conductivity [S/m]	1.39
Conversion Factor	7.73	Phantom Section TSL	Flat HSL

Hardware Setup

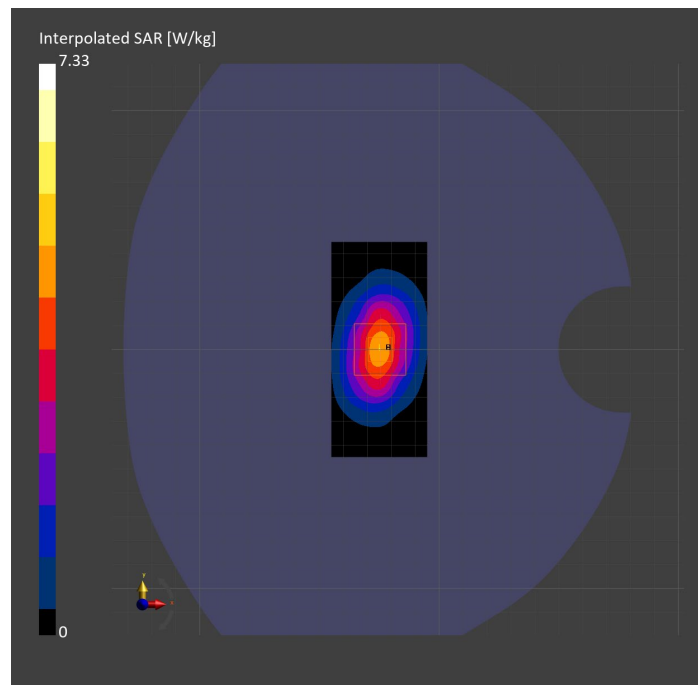
Probe Calibration Date	EX3DV4 - SN7482 2023-04-18	Phantom	Twin-SAM V8.0 (30deg probe tilt)
DAE Calibration Date	DAE4 Sn1380 2023-02-14	TSL Type	HBBL-600-10000
Software Version	16.2.4.2524		

Scans Setup

	Area Scan	Zoom Scan
Grid Extents [mm]	40.0 x 90.0	30.0 x 30.0 x 30.0
Grid Steps [mm]	10.0 x 15.0	6.0 x 6.0 x 1.5
Sensor Surface [mm]	3.0	1.4
Graded Grid	N/A	Yes
M2/M1 [%]		81.8
Dist 3dB Peak [mm]		9.7

Measurement Results

	Area Scan	Zoom Scan
psSAR1g [W/Kg]	3.87	3.85
psSAR10g [W/Kg]	2.00	2.01
Power Drift [dB]	N/A	-0.02



System Performance Check Report for D2600V2 - SN1006

Exposure Conditions

Frequency [MHz] Channel Number	2600.000 0	TSL Permittivity	38.2
Group UID	CW 0--	TSL Conductivity [S/m]	1.86
Conversion Factor	7.49	Phantom Section TSL	Flat HSL

Hardware Setup

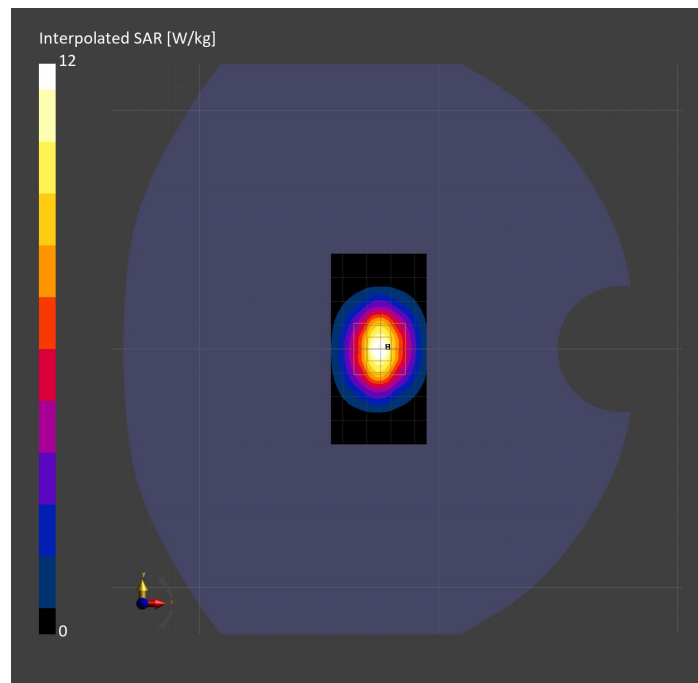
Probe Calibration Date	EX3DV4 - SN7482 2023-04-18	Phantom	Twin-SAM V8.0 (30deg probe tilt)
DAE Calibration Date	DAE4 Sn1380 2023-02-14	TSL Type	HBBL-600-10000
Software Version	16.2.4.2524		

Scans Setup

	Area Scan	Zoom Scan
Grid Extents [mm]	40.0 x 80.0	30.0 x 30.0 x 30.0
Grid Steps [mm]	10.0 x 10.0	5.0 x 5.0 x 1.5
Sensor Surface [mm]	3.0	1.4
Graded Grid	N/A	Yes
M2/M1 [%]		79.0
Dist 3dB Peak [mm]		8.6

Measurement Results

	Area Scan	Zoom Scan
psSAR1g [W/Kg]	5.56	5.56
psSAR10g [W/Kg]	2.49	2.52
Power Drift [dB]	N/A	-0.02



System Performance Check Report for D1750V2 - SN1077

Exposure Conditions

Frequency [MHz] Channel Number	1750.000 0	TSL Permittivity	43.0
Group UID	CW 0--	TSL Conductivity [S/m]	1.30
Conversion Factor	8.2	Phantom Section TSL	Flat HSL

Hardware Setup

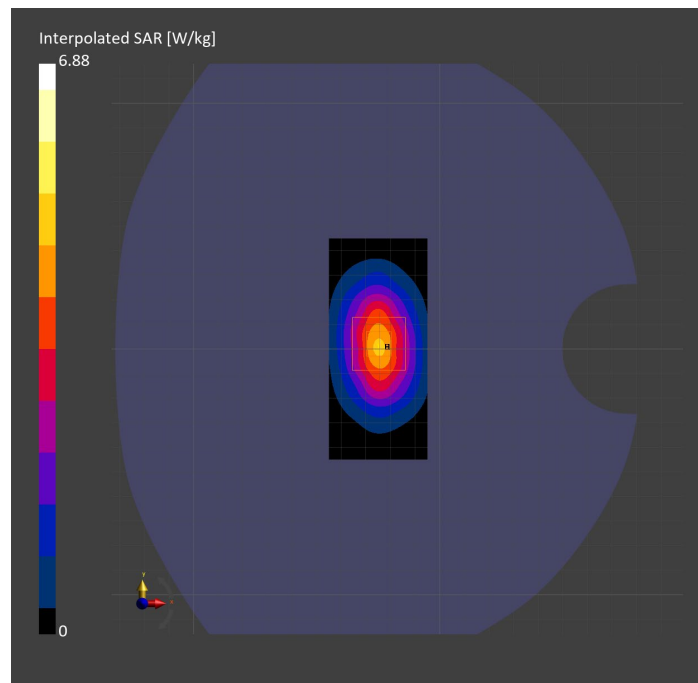
Probe Calibration Date	EX3DV4 - SN7482 2023-04-18	Phantom	Twin-SAM V8.0 (30deg probe tilt)
DAE Calibration Date	DAE4 Sn1380 2023-02-14	TSL Type	HBBL-600-10000
Software Version	16.2.4.2524		

Scans Setup

	Area Scan	Zoom Scan
Grid Extents [mm]	40.0 x 90.0	30.0 x 30.0 x 30.0
Grid Steps [mm]	10.0 x 15.0	6.0 x 6.0 x 1.5
Sensor Surface [mm]	3.0	1.4
Graded Grid	N/A	Yes
M2/M1 [%]		82.4
Dist 3dB Peak [mm]		10.8

Measurement Results

	Area Scan	Zoom Scan
psSAR1g [W/Kg]	3.81	3.72
psSAR10g [W/Kg]	2.03	2.00
Power Drift [dB]	N/A	-0.01



Measurement Report for Validation band: CW, FRONT

Exposure Conditions

Band	Validation band	Phantom Section	5G
Frequency [MHz] Channel Number	30000.0 0	Conversion Factor	1.0
Group UID	CW, 0--	Position Test Distance [mm]	FRONT 5.55

Hardware Setup

Probe Calibration Date	EUmmWV4 - SN9589_F1-55GHz 2022-09-20	Phantom Medium	mmWave xxxx
DAE Calibration Date	DAE4 Sn1377 2022-09-15		Air -
Software Version	3.2.2.2358		

Scan Setup

Scan Type	5G Scan	Grid Extents [mm]	60.0 x 60.0
Grid Steps [lambda]	0.25 x 0.25	Sensor Surface [mm]	5.55

Measurement Results

Avg. Area [cm ²]	4.00
psPDn+ [W/m ²]	34.7
psPDtot+ [W/m ²]	35.8
psPDmod+ [W/m ²]	37.7
E _{max} [V/m]	140
Power Drift [dB]	-0.12

