

# System Performance Check Report for D2450V2 - SN706

## Exposure Conditions

Frequency [MHz]   Channel Number	2450.000   0	TSL Permittivity	37.7
Group   UID	CW   0--	TSL Conductivity [S/m]	1.85
Conversion Factor	7.33	Phantom Section   TSL	Flat   HSL

## Hardware Setup

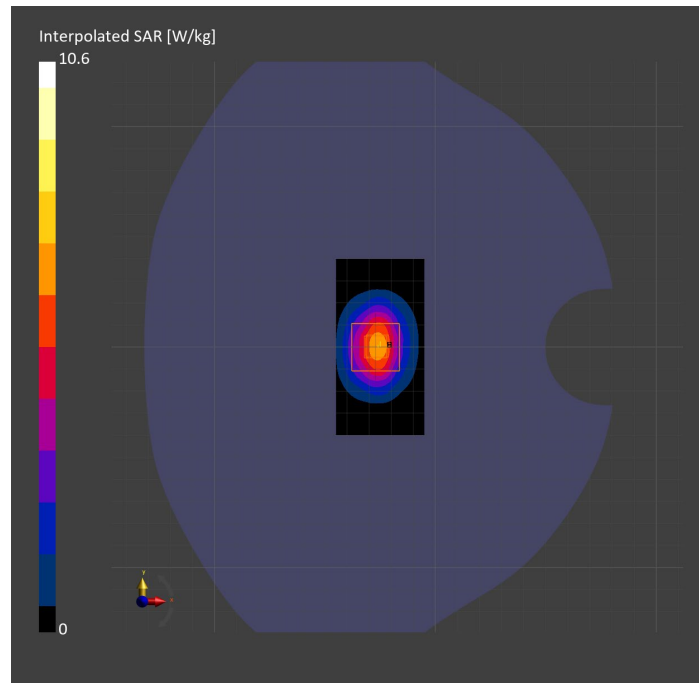
Probe   Calibration Date	EX3DV4 - SN3772   2023-02-13	Phantom	Twin-SAM V8.0 (30deg probe tilt)
DAE   Calibration Date	DAE4 Sn1359   2023-01-24	TSL Type	HBBL-600-10000
Software Version	16.2.4.2524		

## Scans Setup

	Area Scan	Zoom Scan
Grid Extents [mm]	40.0 x 80.0	30.0 x 30.0 x 30.0
Grid Steps [mm]	10.0 x 10.0	5.0 x 5.0 x 1.5
Sensor Surface [mm]	3.0	1.4
Graded Grid	N/A	Yes
M2/M1 [%]		80.8
Dist 3dB Peak [mm]		9.0

## Measurement Results

	Area Scan	Zoom Scan
psSAR1g [W/Kg]	5.38	5.20
psSAR10g [W/Kg]	2.52	2.42
Power Drift [dB]	N/A	-0.07



# System Performance Check Report for D5GHzV2 - SN1138

## Exposure Conditions

Frequency [MHz]   Channel Number	5750.000   0	TSL Permittivity	36.2
Group   UID	CW   0--	TSL Conductivity [S/m]	5.17
Conversion Factor	4.86	Phantom Section   TSL	Flat   HSL

## Hardware Setup

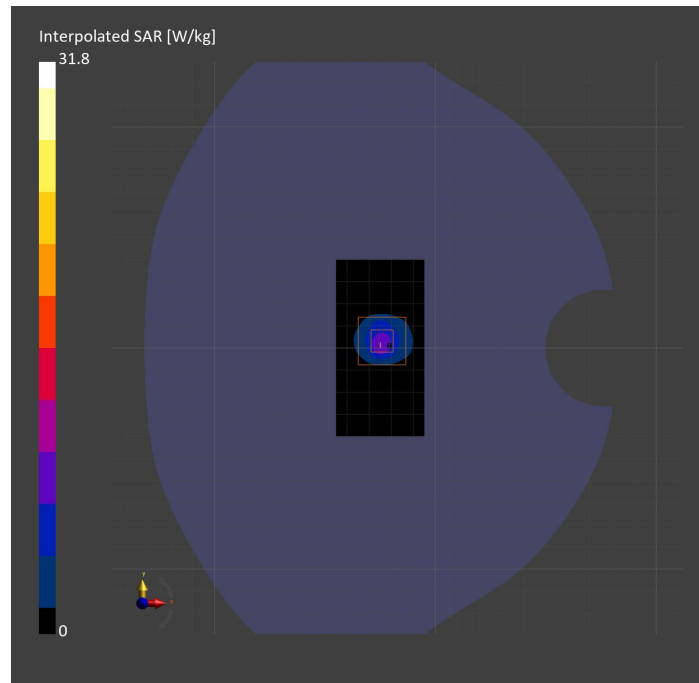
Probe   Calibration Date	EX3DV4 - SN7810   2023-04-25	Phantom	Twin-SAM V8.0 (30deg probe tilt)
DAE   Calibration Date	DAE4 Sn1439   2023-03-16	TSL Type	HBBL-600-10000
Software Version	16.2.4.2524		

## Scans Setup

	Area Scan	Zoom Scan
Grid Extents [mm]	40.0 x 80.0	22.0 x 22.0 x 22.0
Grid Steps [mm]	10.0 x 10.0	4.0 x 4.0 x 1.4
Sensor Surface [mm]	3.0	1.4
Graded Grid	N/A	Yes
M2/M1 [%]		60.9
Dist 3dB Peak [mm]		7.6

## Measurement Results

	Area Scan	Zoom Scan
psSAR1g [W/Kg]	6.79	7.59
psSAR10g [W/Kg]	2.04	2.18
Power Drift [dB]	N/A	0.00



# System Performance Check Report for D1750V2 - SN1053

## Exposure Conditions

Frequency [MHz]   Channel Number	1750.000   0	TSL Permittivity	40.3
Group   UID	CW   0--	TSL Conductivity [S/m]	1.31
Conversion Factor	8.98	Phantom Section   TSL	Flat   HSL

## Hardware Setup

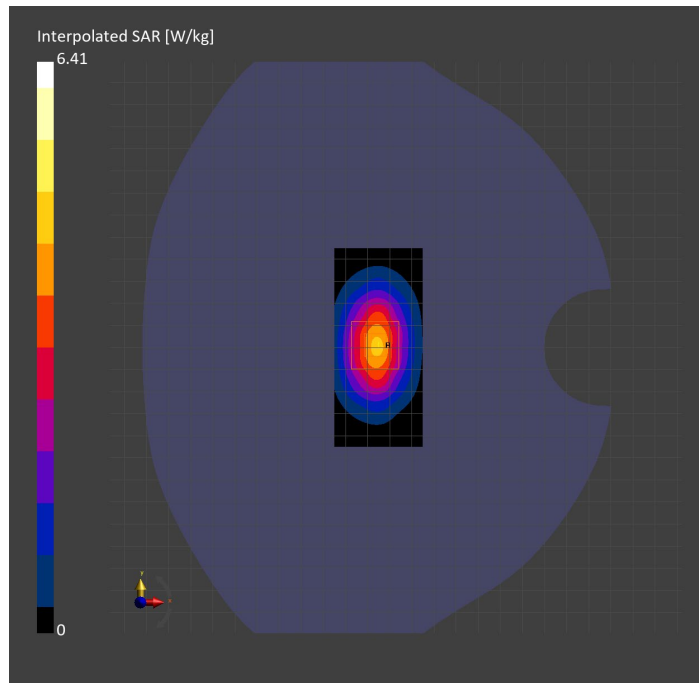
Probe   Calibration Date	EX3DV4 - SN3989   2023-01-26	Phantom	Twin-SAM V8.0 (30deg probe tilt)
DAE   Calibration Date	DAE4 Sn1257   2022-09-20	TSL Type	HBBL-600-10000
Software Version	16.2.4.2524		

## Scans Setup

	Area Scan	Zoom Scan
Grid Extents [mm]	40.0 x 90.0	30.0 x 30.0 x 30.0
Grid Steps [mm]	10.0 x 15.0	6.0 x 6.0 x 1.5
Sensor Surface [mm]	3.0	1.4
Graded Grid	N/A	Yes
M2/M1 [%]		85.2
Dist 3dB Peak [mm]		10.8

## Measurement Results

	Area Scan	Zoom Scan
psSAR1g [W/Kg]	3.60	<b>3.60</b>
psSAR10g [W/Kg]	1.94	<b>1.95</b>
Power Drift [dB]	N/A	-0.01



# System Performance Check Report for D1900V2 - SN5d163

## Exposure Conditions

Frequency [MHz]   Channel Number	1900.000   0	TSL Permittivity	38.1
Group   UID	CW   0--	TSL Conductivity [S/m]	1.41
Conversion Factor	7.53	Phantom Section   TSL	Flat   HSL

## Hardware Setup

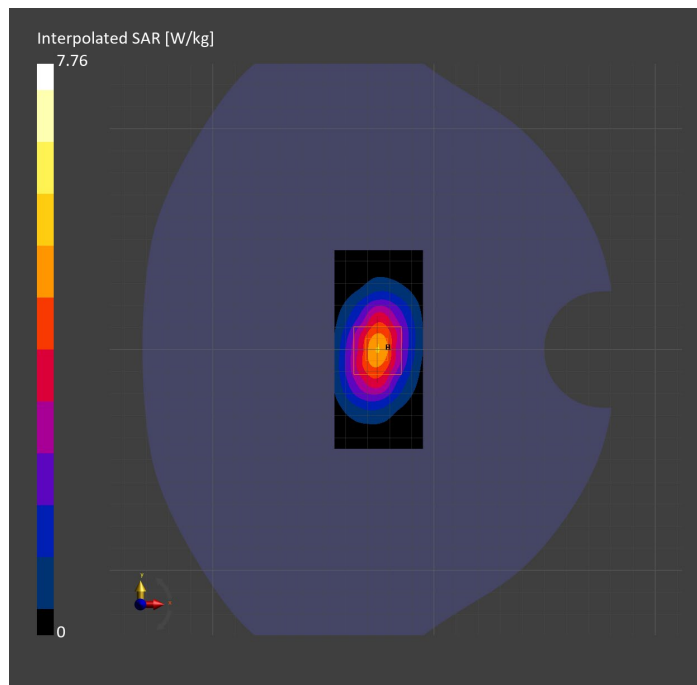
Probe   Calibration Date	EX3DV4 - SN7807   2023-04-11	Phantom	Twin-SAM V8.0 (30deg probe tilt)
DAE   Calibration Date	DAE4 Sn1799   2023-04-04	TSL Type	HBBL-600-10000
Software Version	16.2.4.2524		

## Scan Setup

	Area Scan	Zoom Scan
Grid Extents [mm]	40.0 x 90.0	30.0 x 30.0 x 30.0
Grid Steps [mm]	10.0 x 15.0	6.0 x 6.0 x 1.5
Sensor Surface [mm]	3.0	1.4
Graded Grid	N/A	Yes
M2/M1 [%]		81.5
Dist 3dB Peak [mm]		10.3

## Measurement Results

	Area Scan	Zoom Scan
psSAR1g [W/Kg]	4.13	<b>4.10</b>
psSAR10g [W/Kg]	2.16	<b>2.14</b>
Power Drift [dB]	N/A	-0.06



# System Performance Check Report for D2600V2 - SN1036

## Exposure Conditions

Frequency [MHz]   Channel Number	2600.000   0	TSL Permittivity	39.3
Group   UID	CW   0--	TSL Conductivity [S/m]	1.96
Conversion Factor	7.32	Phantom Section   TSL	Flat   HSL

## Hardware Setup

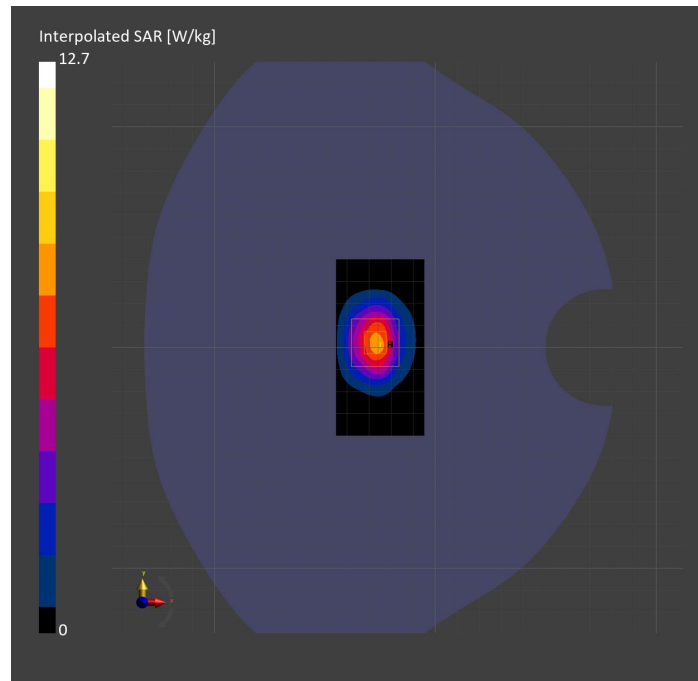
Probe   Calibration Date	EX3DV4 - SN3885   2022-09-20	Phantom	Twin-SAM V5.0 (30deg probe tilt)
DAE   Calibration Date	DAE4 Sn1548   2023-02-14	TSL Type	HBBL-600-10000
Software Version	16.2.4.2524		

## Scans Setup

	Area Scan	Zoom Scan
Grid Extents [mm]	40.0 x 80.0	30.0 x 30.0 x 30.0
Grid Steps [mm]	10.0 x 10.0	5.0 x 5.0 x 1.5
Sensor Surface [mm]	3.0	1.4
Graded Grid	N/A	Yes
M2/M1 [%]		79.5
Dist 3dB Peak [mm]		9.0

## Measurement Results

	Area Scan	Zoom Scan
psSAR1g [W/Kg]	6.13	<b>6.03</b>
psSAR10g [W/Kg]	2.79	<b>2.71</b>
Power Drift [dB]	N/A	0.01



# Measurement Report for Device, FRONT, Validation band, UID 0 -, Channel 0 (30000.0MHz)

## Device under Test Properties

Model, Manufacturer	Dimensions [mm]	IMEI	DUT Type
, Device	100.0 x 100.0 x 100.0		Phone

## Exposure Conditions

Phantom Section	Position, Test Distance [mm]	Band	Group, UID	Frequency [MHz], Channel Number	Conversion Factor
5G Air	FRONT, 5.55	Validation band	CW, 0--	30000.0, 0	1.0

## Hardware Setup

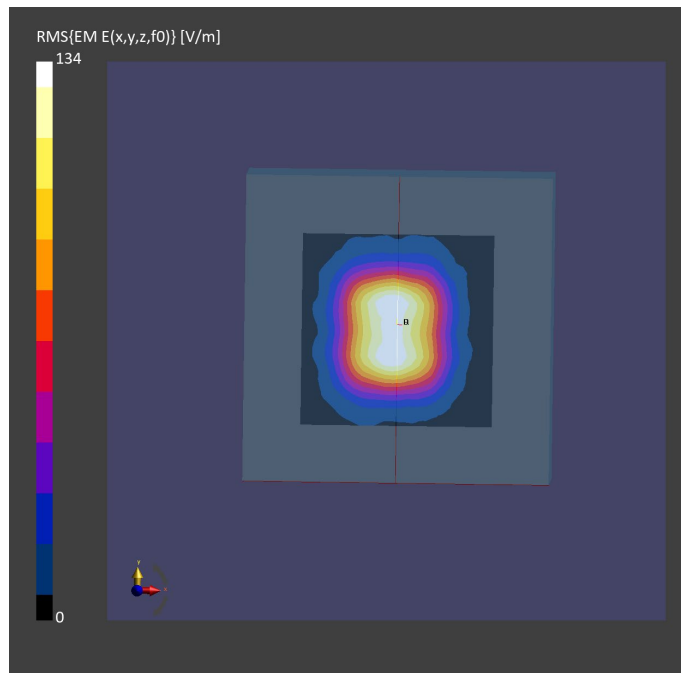
Phantom	Medium	Probe, Calibration Date	DAE, Calibration Date
mmWave- xxxx	---Air	EUmmWV4 - SN9589_F1-55GHz, 2022-09-20	DAE4 Sn1377, 2022-09-15

## Scan Setup

	5G Scan
Grid Extents [mm]	60.0 x 60.0
Grid Steps [lambda]	0.25 x 0.25
Sensor Surface [mm]	5.55
MAIA	N/A

## Measurement Results

	5G Scan
Date	2023-03-16, 19:11
Avg. Area [cm <sup>2</sup> ]	4.00
psPDn+ [W/m <sup>2</sup> ]	34.7
psPDtot+ [W/m <sup>2</sup> ]	36.1
psPDmod+ [W/m <sup>2</sup> ]	36.2
E <sub>max</sub> [V/m]	134
Power Drift [dB]	-0.02



# Measurement Report for Validation band: CW, FRONT

## Exposure Conditions

Band	Validation band	Phantom Section	5G
Frequency [MHz]   Channel Number	30000.0   0	Conversion Factor	1.0
Group   UID	CW, 0--	Position   Test Distance [mm]	FRONT   5.55

## Hardware Setup

Probe   Calibration Date	EUmmWV4 - SN9589_F1-55GHz   2022-09-20	Phantom	mmWave   xxxx
DAE   Calibration Date	DAE4 Sn1377   2022-09-15	Medium	Air   -
Software Version	3.2.0.1840		

## Scan Setup

Scan Type	5G Scan	Grid Extents [mm]	60.0 x 60.0
Grid Steps [lambda]	0.25 x 0.25	Sensor Surface [mm]	5.55

## Measurement Results

Avg. Area [cm <sup>2</sup> ]	4.00
psPDn+ [W/m <sup>2</sup> ]	32.5
psPDtot+ [W/m <sup>2</sup> ]	34.1
psPDmod+ [W/m <sup>2</sup> ]	36.0
E <sub>max</sub> [V/m]	137
Power Drift [dB]	0.01

