

### GSM 850

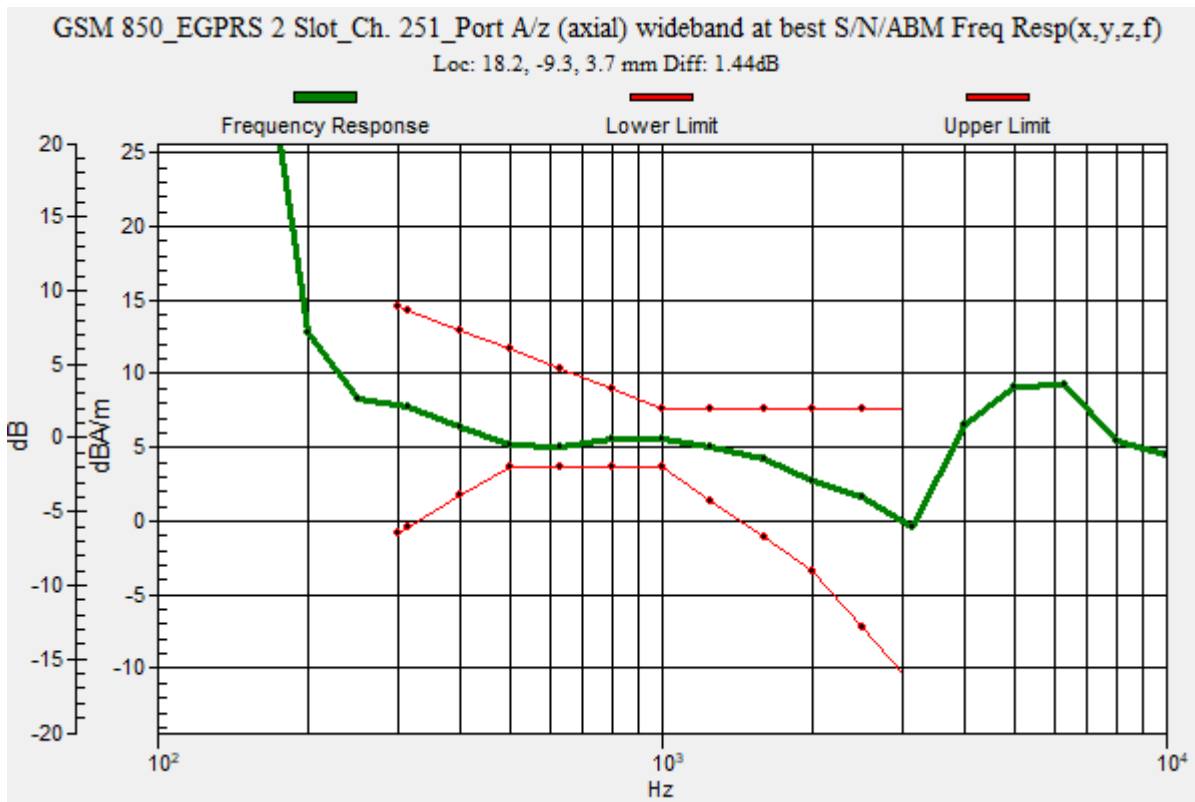
Communication System: UID 0, 1@GPRS-FDD (TDMA, GMSK, 2 slot) (0); Frequency: 848.8 MHz;Duty Cycle: 1:4.00037

### T-Coil scan (scan for ANSI C63.19 2011 compliance)/GSM 850\_EGPRS 2 Slot\_Ch. 251\_Port A/z (axial) wideband at best S/N/ABM Freq Resp(x,y,z,f) (1x1x1): Measurement grid:

dx=10mm, dy=10mm  
 Signal Type: Audio File (.wav) 48k\_voice\_300-3000\_2s.wav  
 Output Gain: 72.83  
 Measure Window Start: 300ms  
 Measure Window Length: 2000ms  
 BWC applied: 10.80 dB  
 Device Reference Point: 0, 0, -6.3 mm

Category	Telephone parameters WD signal quality [(signal+noise)-to-noise ratio in decibels]
Category T1	0 dB to 10 dB
Category T2	10 dB to 20 dB
Category T3	20 dB to 30 dB
Category T4	> 30 dB

**Cursor:**  
 Diff = 1.44 dB  
 BWC Factor = 10.80 dB  
 Location: 18.2, -9.3, 3.7 mm



### GSM 850

Communication System: UID 0, 1@GPRS-FDD (TDMA, GMSK, 2 slot) (0); Frequency: 848.8 MHz; Duty Cycle: 1:4.00037

Phantom section: TCoil Section

DASY5 Configuration:

- Probe: AM1DV3 - 3083; ; Calibrated: 1/10/2022
- Sensor-Surface: 0mm (Fix Surface)
- Electronics: DAE4 Sn1357; Calibrated: 1/11/2022
- Phantom: HAC Test Arch with AMCC; Type: SD HAC P01 BB
- Measurement SW: DASY52, Version 52.10 (4);SEMCAD X Version 14.6.14 (7483)

### T-Coil scan (scan for ANSI C63.19 2011 compliance)/GSM 850\_EGPRS 2 Slot\_Ch.

**251\_Port A/z (axial) 4.2mm 50x50/ABM Interpolated SNR(x,y,z) (121x121x1):** Interpolated grid:

dx=1.000 mm, dy=1.000 mm

Signal Type: Audio File (.wav) 48k\_voice\_1kHz\_1s.wav

Output Gain: 37.14

Measure Window Start: 300ms

Measure Window Length: 1000ms

BWC applied: 0.16 dB

Device Reference Point: 0, 0, -6.3 mm

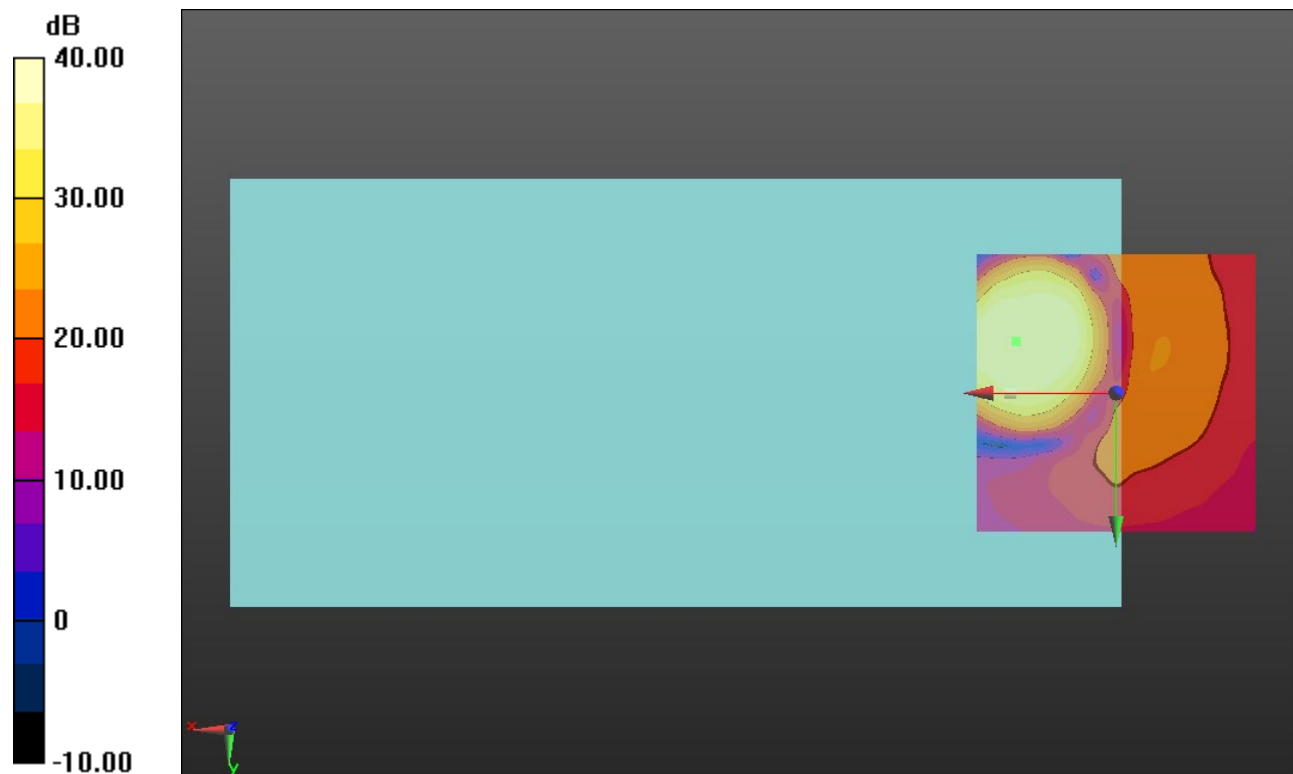
#### Cursor:

ABM1/ABM2 = 41.23 dB

ABM1 comp = 5.66 dBA/m

BWC Factor = 0.16 dB

Location: 17.9, -9.2, 3.7 mm



0 dB = 1.000 = 0.00 dB

### GSM 1900

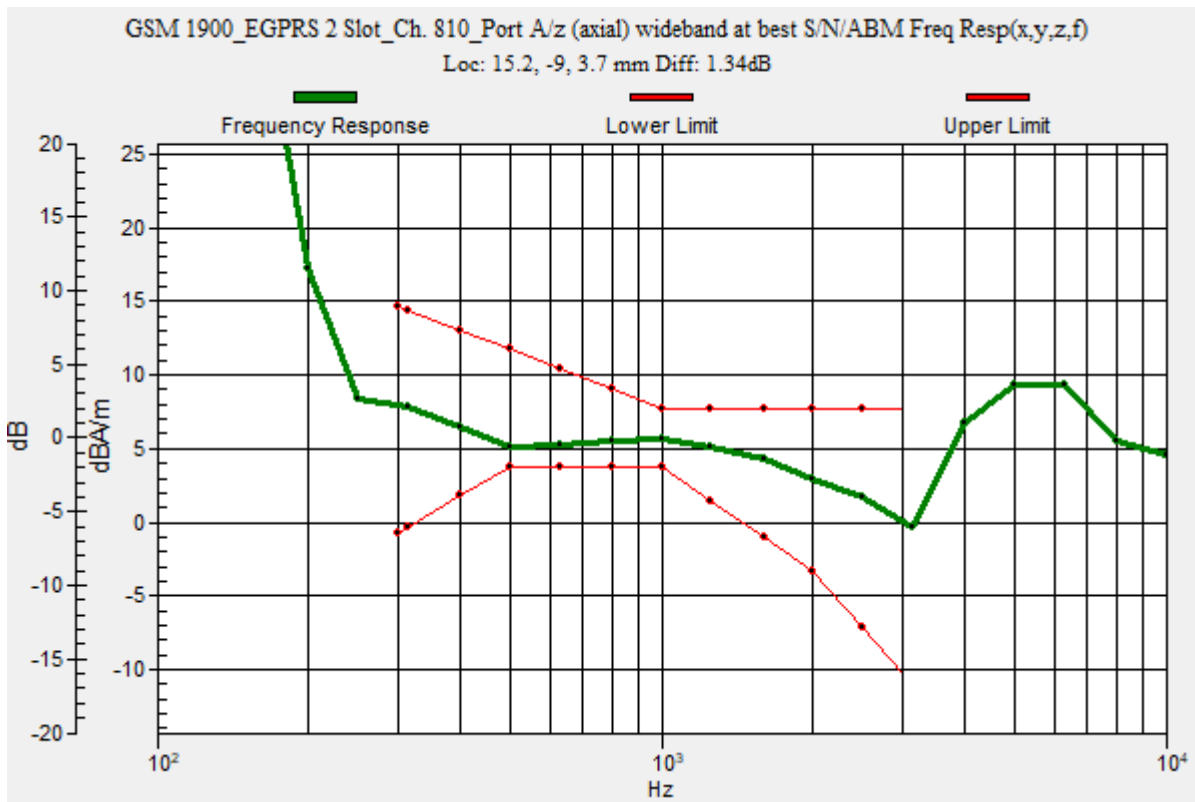
Communication System: UID 0, 1@GPRS-FDD (TDMA, GMSK, 2 slot) (0); Frequency: 1909.8 MHz;Duty Cycle: 1:4.00037

### T-Coil scan (scan for ANSI C63.19 2011 compliance)/GSM 1900\_EGPRS 2 Slot\_Ch. 810\_Port A/z (axial) wideband at best S/N/ABM Freq Resp(x,y,z,f) (1x1x1): Measurement grid:

dx=10mm, dy=10mm  
 Signal Type: Audio File (.wav) 48k\_voice\_300-3000\_2s.wav  
 Output Gain: 72.83  
 Measure Window Start: 300ms  
 Measure Window Length: 2000ms  
 BWC applied: 10.80 dB  
 Device Reference Point: 0, 0, -6.3 mm

Category	Telephone parameters WD signal quality [(signal+noise)-to-noise ratio in decibels]
Category T1	0 dB to 10 dB
Category T2	10 dB to 20 dB
Category T3	20 dB to 30 dB
Category T4	> 30 dB

**Cursor:**  
 Diff = 1.34 dB  
 BWC Factor = 10.80 dB  
 Location: 15.2, -9, 3.7 mm



### GSM 1900

Communication System: UID 0, 1@GPRS-FDD (TDMA, GMSK, 2 slot) (0); Frequency: 1909.8 MHz; Duty Cycle: 1:4.00037

Phantom section: TCoil Section

DASY5 Configuration:

- Probe: AM1DV3 - 3083; ; Calibrated: 1/10/2022
- Sensor-Surface: 0mm (Fix Surface)
- Electronics: DAE4 Sn1357; Calibrated: 1/11/2022
- Phantom: HAC Test Arch with AMCC; Type: SD HAC P01 BB
- Measurement SW: DASY52, Version 52.10 (4);SEMCAD X Version 14.6.14 (7483)

### T-Coil scan (scan for ANSI C63.19 2011 compliance)/GSM 1900\_EGPRS 2 Slot\_Ch.

**810\_Port A/z (axial) Single Point/ABM SNR(x,y,z) (1x1x1):** Measurement grid: dx=10mm, dy=10mm

Signal Type: Audio File (.wav) 48k\_voice\_1kHz\_1s.wav

Output Gain: 37.14

Measure Window Start: 300ms

Measure Window Length: 1000ms

BWC applied: 0.16 dB

Device Reference Point: 0, 0, -6.3 mm

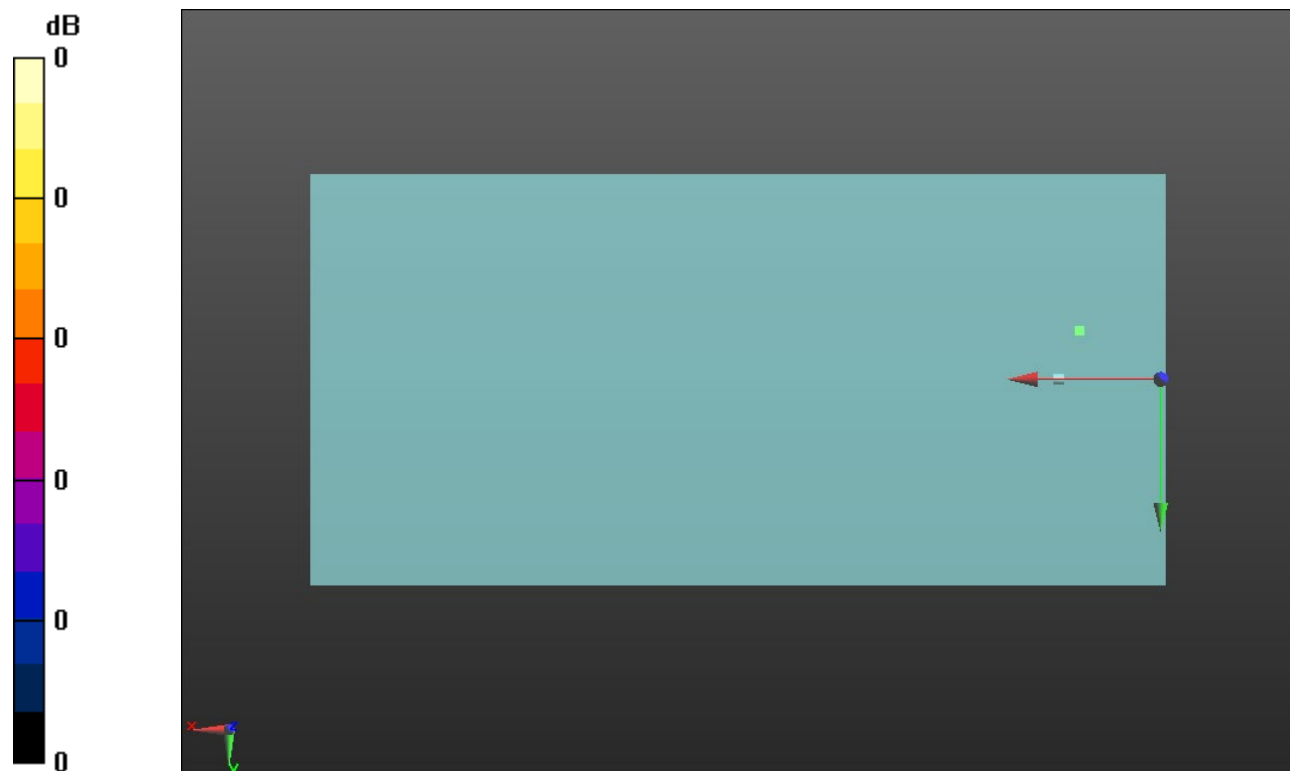
#### Cursor:

ABM1/ABM2 = 40.53 dB

ABM1 comp = 5.66 dBA/m

BWC Factor = 0.16 dB

Location: 15.2, -9, 3.7 mm



0 dB = 1.000 = 0.00 dB

## W-CDMA Band II

Communication System: UID 0, 1@UMTS-FDD (WCDMA) (0); Frequency: 1880 MHz;Duty Cycle: 1:1

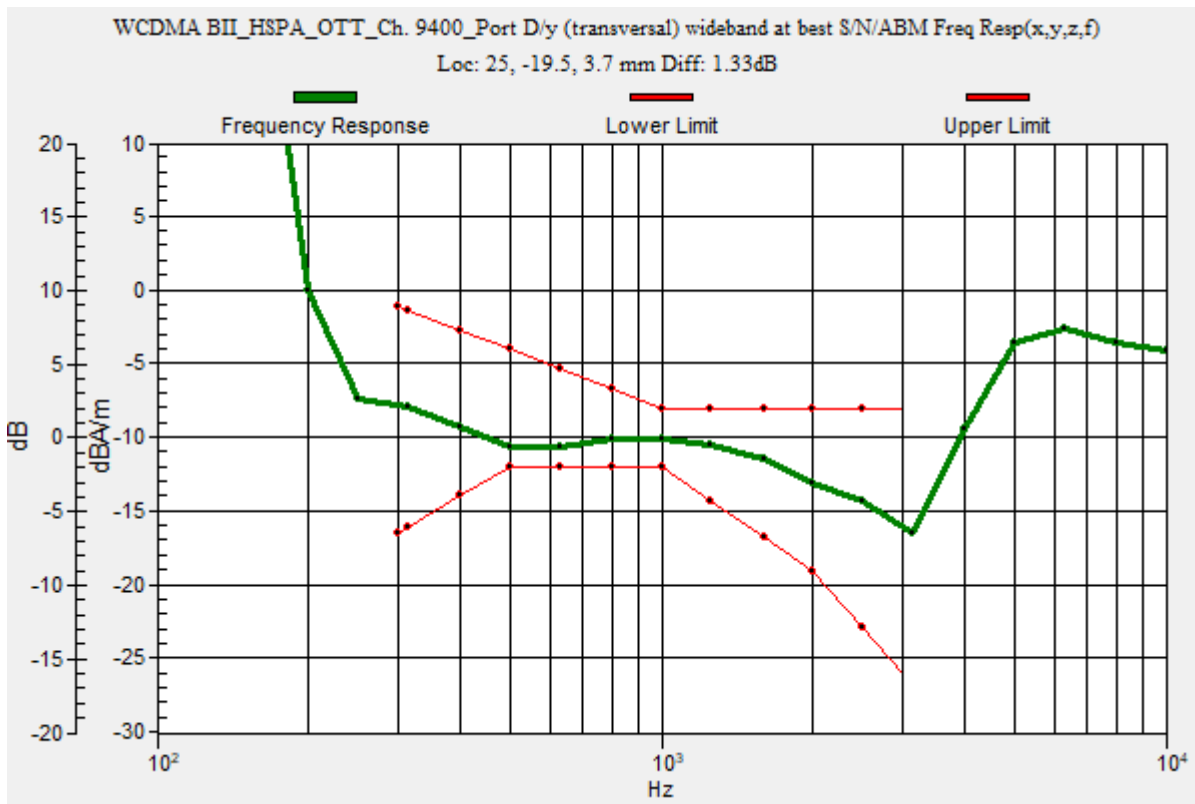
### T-Coil scan (scan for ANSI C63.19 2011 compliance)/WCDMA BII\_HSPA\_OTT\_Ch. 9400\_Port D/y (transversal) wideband at best S/N/ABM Freq Resp(x,y,z,f) (1x1x1):

Measurement grid: dx=10mm, dy=10mm  
 Signal Type: Audio File (.wav) 48k\_voice\_300-3000\_2s.wav  
 Output Gain: 72.83  
 Measure Window Start: 300ms  
 Measure Window Length: 2000ms  
 BWC applied: 10.80 dB  
 Device Reference Point: 0, 0, -6.3 mm

Category	Telephone parameters WD signal quality [(signal+noise)-to-noise ratio in decibels]
Category T1	0 dB to 10 dB
Category T2	10 dB to 20 dB
Category T3	20 dB to 30 dB
Category T4	> 30 dB

**Cursor:**

Diff = 1.33 dB  
 BWC Factor = 10.80 dB  
 Location: 25, -19.5, 3.7 mm



## W-CDMA Band II

Communication System: UID 0, 1@UMTS-FDD (WCDMA) (0); Frequency: 1880 MHz; Duty Cycle: 1:1

Phantom section: TCoil Section

DASY5 Configuration:

- Probe: AM1DV3 - 3083; ; Calibrated: 1/10/2022
- Sensor-Surface: 0mm (Fix Surface)
- Electronics: DAE4 Sn1357; Calibrated: 1/11/2022
- Phantom: HAC Test Arch with AMCC; Type: SD HAC P01 BB
- Measurement SW: DASY52, Version 52.10 (4);SEMCAD X Version 14.6.14 (7483)

### T-Coil scan (scan for ANSI C63.19 2011 compliance)/WCDMA BII\_HSPA\_OTT\_Ch.

**9400\_Port D/y (transversal) Single Point/ABM SNR(x,y,z) (1x1x1):** Measurement grid: dx=10mm, dy=10mm

Signal Type: Audio File (.wav) 48k\_voice\_1kHz\_1s.wav

Output Gain: 37.14

Measure Window Start: 300ms

Measure Window Length: 1000ms

BWC applied: 0.16 dB

Device Reference Point: 0, 0, -6.3 mm

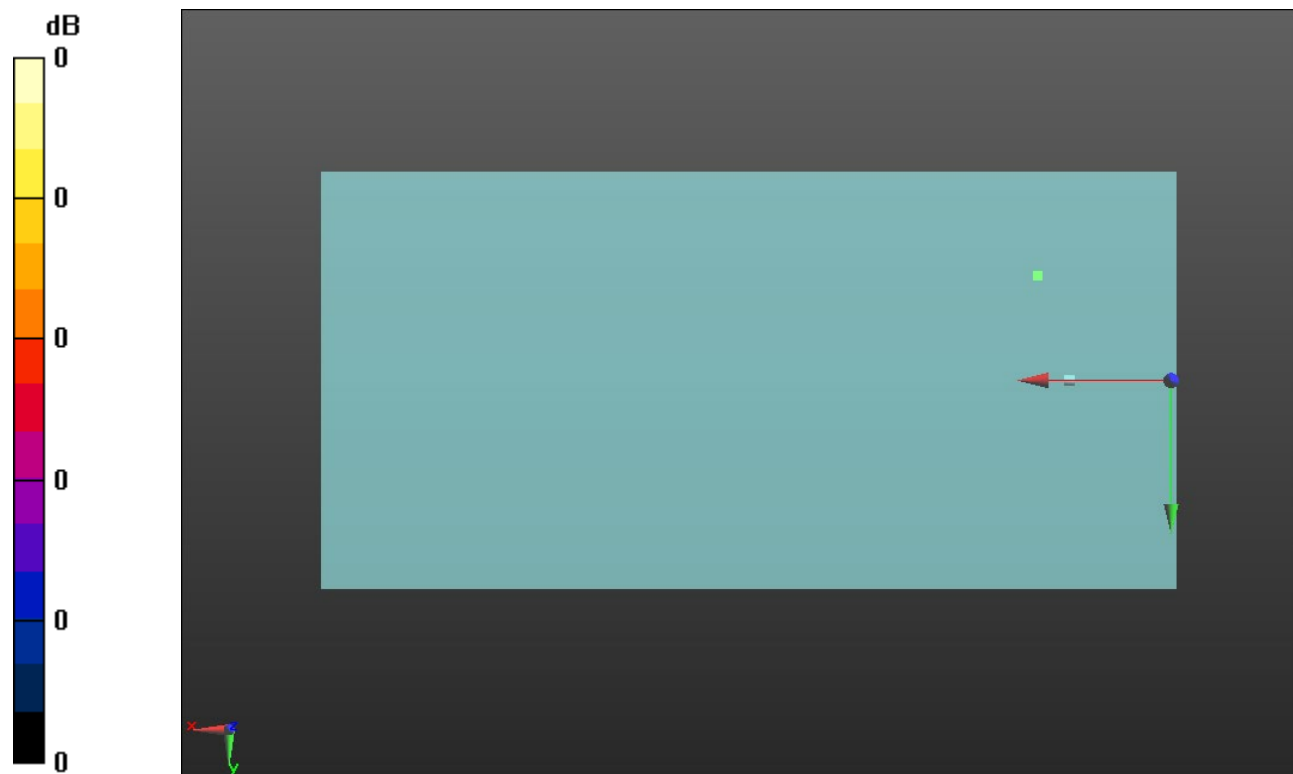
#### Cursor:

ABM1/ABM2 = 41.85 dB

ABM1 comp = -10.11 dBA/m

BWC Factor = 0.16 dB

Location: 25, -19.5, 3.7 mm



0 dB = 1.000 = 0.00 dB

### W-CDMA Band IV

Communication System: UID 0, 1@UMTS-FDD (WCDMA) (0); Frequency: 1732.6 MHz;Duty Cycle: 1:1

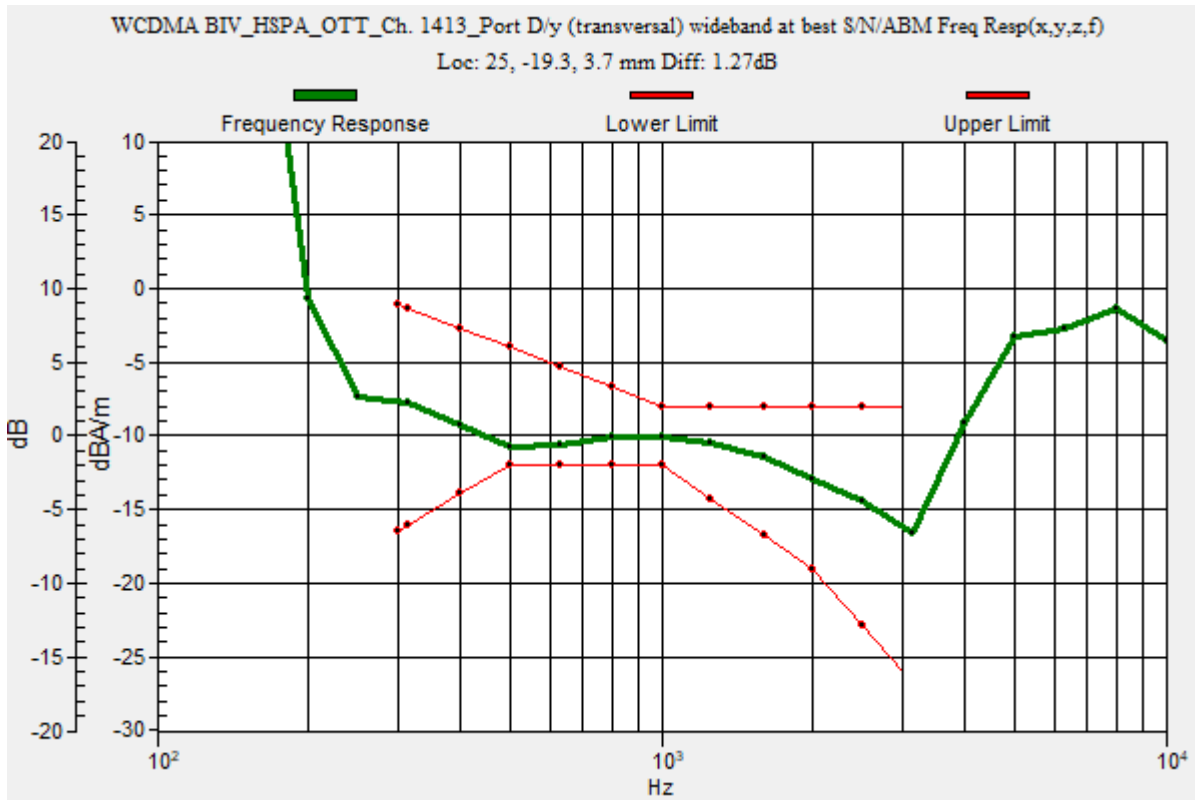
### T-Coil scan (scan for ANSI C63.19 2011 compliance)/WCDMA BIV\_HSPA\_OTT\_Ch. 1413\_Port D/y (transversal) wideband at best S/N/ABM Freq Resp(x,y,z,f) (1x1x1):

Measurement grid: dx=10mm, dy=10mm  
 Signal Type: Audio File (.wav) 48k\_voice\_300-3000\_2s.wav  
 Output Gain: 72.83  
 Measure Window Start: 300ms  
 Measure Window Length: 2000ms  
 BWC applied: 10.80 dB  
 Device Reference Point: 0, 0, -6.3 mm

Category	Telephone parameters WD signal quality [(signal+noise)-to-noise ratio in decibels]
Category T1	0 dB to 10 dB
Category T2	10 dB to 20 dB
Category T3	20 dB to 30 dB
Category T4	> 30 dB

**Cursor:**

Diff = 1.27 dB  
 BWC Factor = 10.80 dB  
 Location: 25, -19.3, 3.7 mm



### W-CDMA Band IV

Communication System: UID 0, 1@UMTS-FDD (WCDMA) (0); Frequency: 1732.6 MHz; Duty Cycle: 1:1

Phantom section: TCoil Section

DASY5 Configuration:

- Probe: AM1DV3 - 3083; ; Calibrated: 1/10/2022
- Sensor-Surface: 0mm (Fix Surface)
- Electronics: DAE4 Sn1357; Calibrated: 1/11/2022
- Phantom: HAC Test Arch with AMCC; Type: SD HAC P01 BB
- Measurement SW: DASY52, Version 52.10 (4);SEMCAD X Version 14.6.14 (7483)

### T-Coil scan (scan for ANSI C63.19 2011 compliance)/WCDMA BIV\_HSPA\_OTT\_Ch. 1413\_Port D/y (transversal) 4.2mm 50 x 50/ABM Interpolated SNR(x,y,z) (121x121x1):

Interpolated grid: dx=1.000 mm, dy=1.000 mm

Signal Type: Audio File (.wav) 48k\_voice\_1kHz\_1s.wav

Output Gain: 37.14

Measure Window Start: 300ms

Measure Window Length: 1000ms

BWC applied: 0.16 dB

Device Reference Point: 0, 0, -6.3 mm

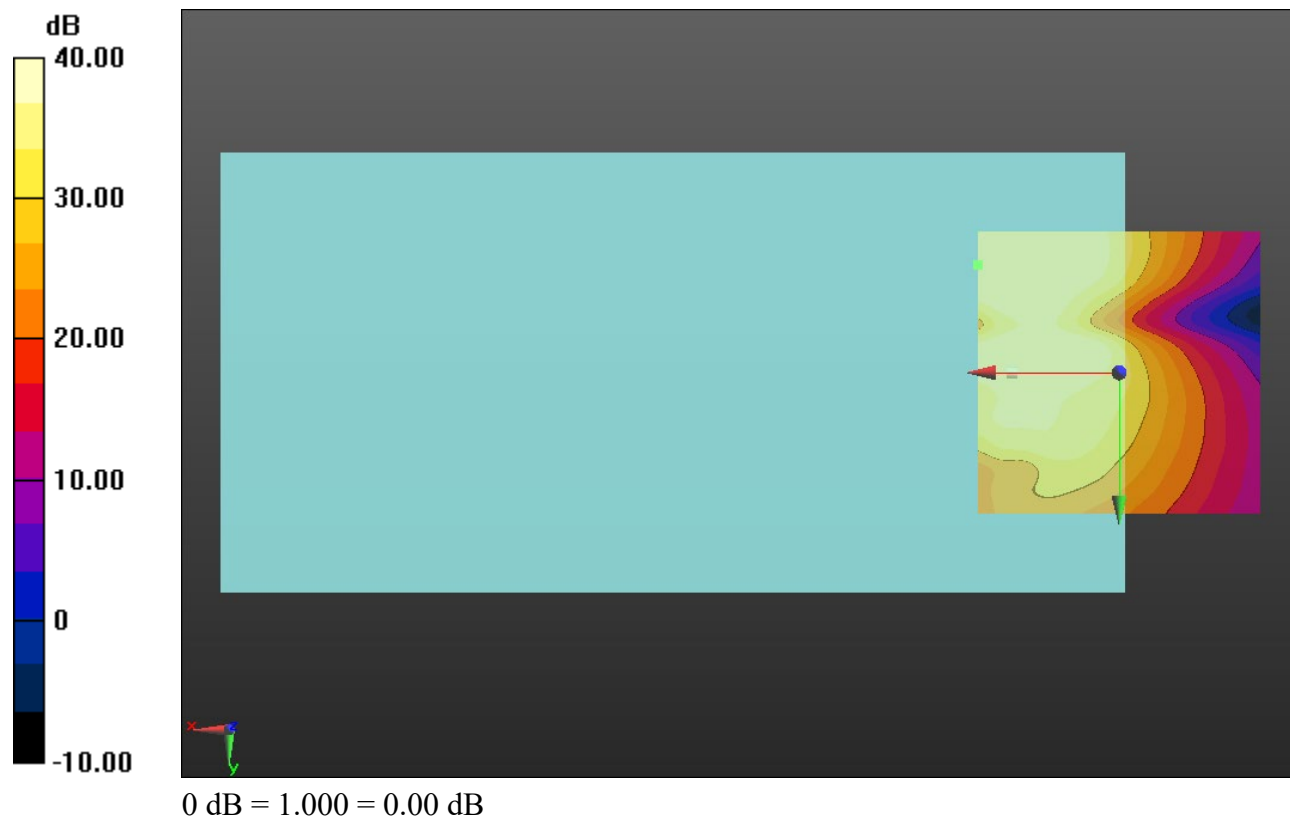
#### Cursor:

ABM1/ABM2 = 42.22 dB

ABM1 comp = -10.01 dBA/m

BWC Factor = 0.16 dB

Location: 25, -19.2, 3.7 mm





### W-CDMA Band V

Communication System: UID 0, 1@UMTS-FDD (WCDMA) (0); Frequency: 836.6 MHz;Duty Cycle: 1:1

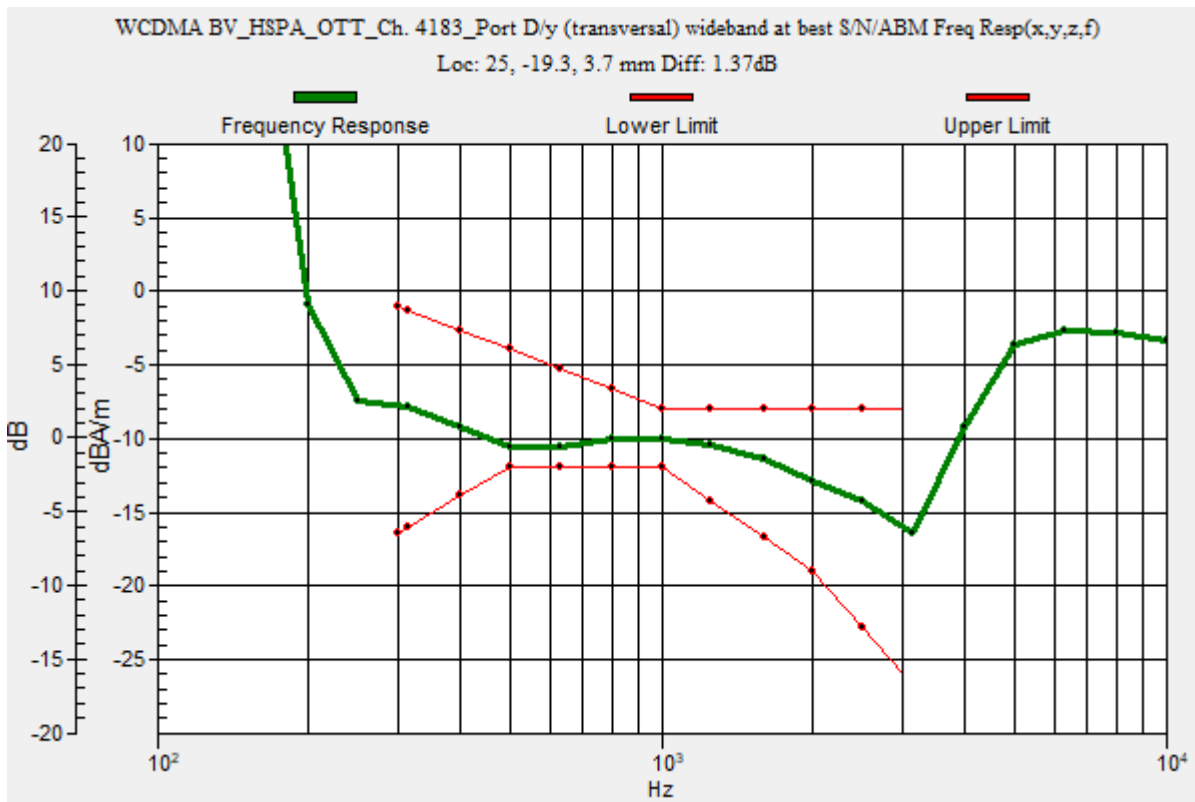
### T-Coil scan (scan for ANSI C63.19 2011 compliance)/WCDMA BV\_HSPA\_OTT\_Ch. 4183\_Port D/y (transversal) wideband at best S/N/ABM Freq Resp(x,y,z,f) (1x1x1):

Measurement grid: dx=10mm, dy=10mm  
 Signal Type: Audio File (.wav) 48k\_voice\_300-3000\_2s.wav  
 Output Gain: 72.83  
 Measure Window Start: 300ms  
 Measure Window Length: 2000ms  
 BWC applied: 10.80 dB  
 Device Reference Point: 0, 0, -6.3 mm

Category	Telephone parameters WD signal quality [(signal+noise)-to-noise ratio in decibels]
Category T1	0 dB to 10 dB
Category T2	10 dB to 20 dB
Category T3	20 dB to 30 dB
Category T4	> 30 dB

**Cursor:**

Diff = 1.37 dB  
 BWC Factor = 10.80 dB  
 Location: 25, -19.3, 3.7 mm



### W-CDMA Band V

Communication System: UID 0, 1@UMTS-FDD (WCDMA) (0); Frequency: 836.6 MHz; Duty Cycle: 1:1

Phantom section: TCoil Section

DASY5 Configuration:

- Probe: AM1DV3 - 3083; ; Calibrated: 1/10/2022
- Sensor-Surface: 0mm (Fix Surface)
- Electronics: DAE4 Sn1357; Calibrated: 1/11/2022
- Phantom: HAC Test Arch with AMCC; Type: SD HAC P01 BB
- Measurement SW: DASY52, Version 52.10 (4);SEMCAD X Version 14.6.14 (7483)

### T-Coil scan (scan for ANSI C63.19 2011 compliance)/WCDMA BV\_HSPA\_OTT\_Ch.

**4183\_Port D/y (transversal) Single Point/ABM SNR(x,y,z) (1x1x1):** Measurement grid: dx=10mm, dy=10mm

Signal Type: Audio File (.wav) 48k\_voice\_1kHz\_1s.wav

Output Gain: 37.14

Measure Window Start: 300ms

Measure Window Length: 1000ms

BWC applied: 0.16 dB

Device Reference Point: 0, 0, -6.3 mm

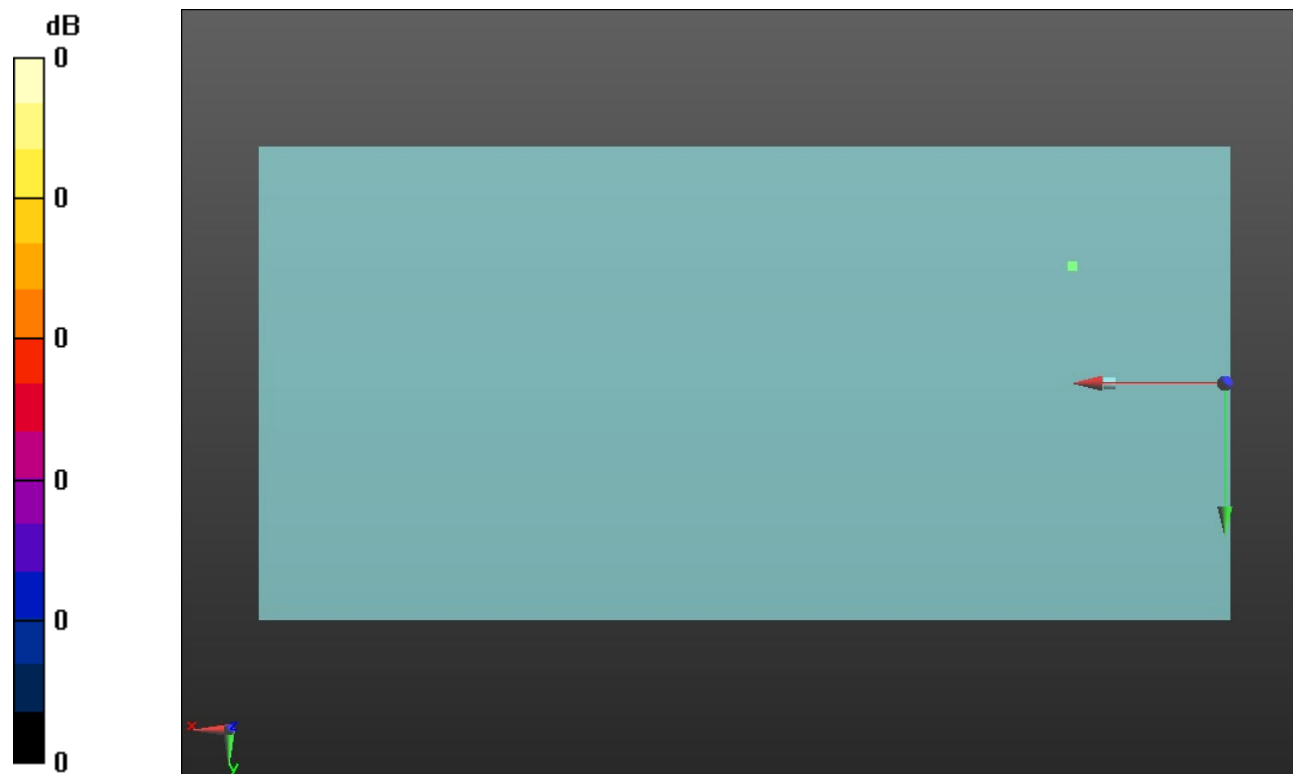
#### Cursor:

ABM1/ABM2 = 42.81 dB

ABM1 comp = -9.98 dBA/m

BWC Factor = 0.16 dB

Location: 25, -19.3, 3.7 mm



0 dB = 1.000 = 0.00 dB

## LTE Band 2

Communication System: UID 0, 1@LTE (FDD) (0); Frequency: 1880 MHz;Duty Cycle: 1:1

### T-Coil scan (scan for ANSI C63.19 2011 compliance)/LTE Band 2\_64QAM\_20 MHz BW\_RB 100,0\_OTT\_Ch. 18900\_Port C/y (transversal) wideband at best S/N/ABM Freq

Resp(x,y,z,f) (1x1x1): Measurement grid: dx=10mm, dy=10mm

Signal Type: Audio File (.wav) 48k\_voice\_300-3000\_2s.wav

Output Gain: 72.83

Measure Window Start: 300ms

Measure Window Length: 2000ms

BWC applied: 10.80 dB

Device Reference Point: 0, 0, -6.3 mm

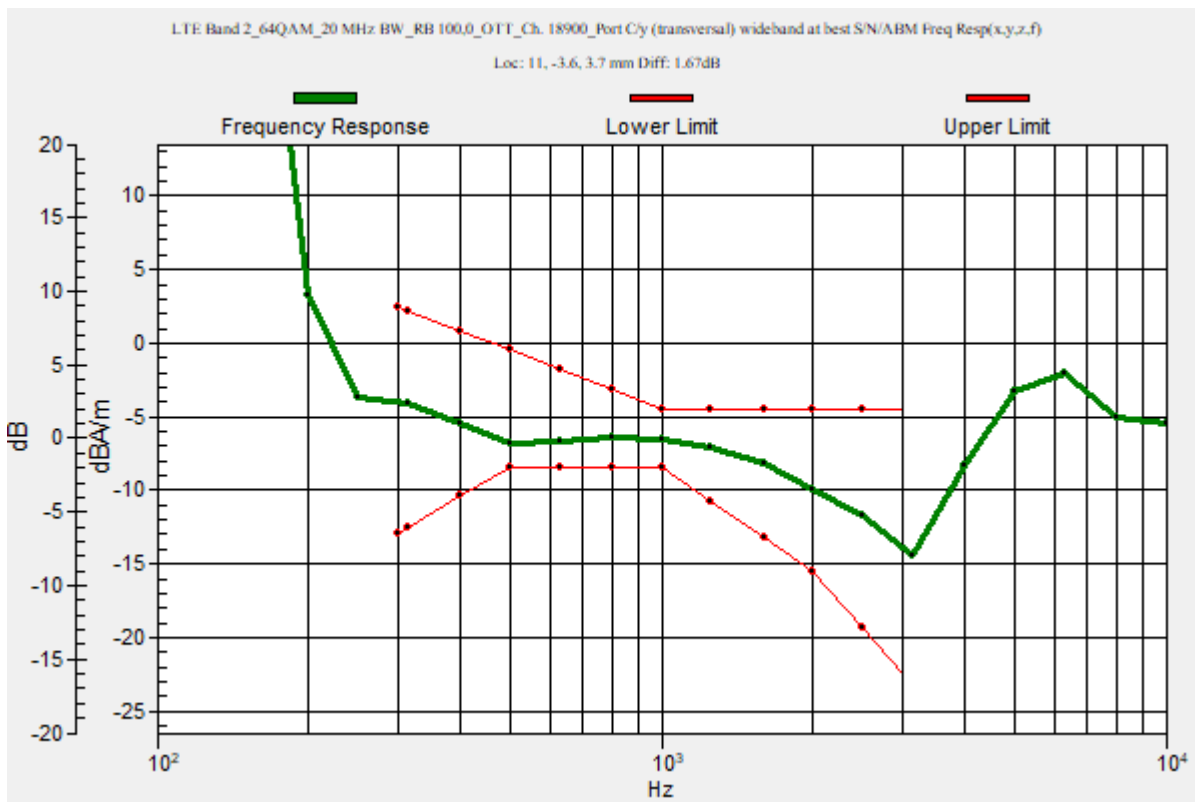
Category	Telephone parameters WD signal quality [(signal+noise)-to-noise ratio in decibels]
Category T1	0 dB to 10 dB
Category T2	10 dB to 20 dB
Category T3	20 dB to 30 dB
Category T4	> 30 dB

**Cursor:**

Diff = 1.67 dB

BWC Factor = 10.80 dB

Location: 11, -3.6, 3.7 mm



## LTE Band 2

Communication System: UID 0, 1@LTE (FDD) (0); Frequency: 1880 MHz; Duty Cycle: 1:1

Phantom section: TCoil Section

DASY5 Configuration:

- Probe: AM1DV3 - 3083; ; Calibrated: 1/10/2022
- Sensor-Surface: 0mm (Fix Surface)
- Electronics: DAE4 Sn1357; Calibrated: 1/11/2022
- Phantom: HAC Test Arch with AMCC; Type: SD HAC P01 BB
- Measurement SW: DASY52, Version 52.10 (4);SEMCAD X Version 14.6.14 (7483)

**T-Coil scan (scan for ANSI C63.19 2011 compliance)/LTE Band 2\_64QAM\_20 MHz  
BW\_RB 100,0\_OTT\_Ch. 18900\_Port C/y (transversal) 4.2mm 50 x 50/ABM Interpolated  
SNR(x,y,z) (121x121x1):** Interpolated grid: dx=1.000 mm, dy=1.000 mm

Signal Type: Audio File (.wav) 48k\_voice\_1kHz\_1s.wav

Output Gain: 37.14

Measure Window Start: 300ms

Measure Window Length: 1000ms

BWC applied: 0.16 dB

Device Reference Point: 0, 0, -6.3 mm

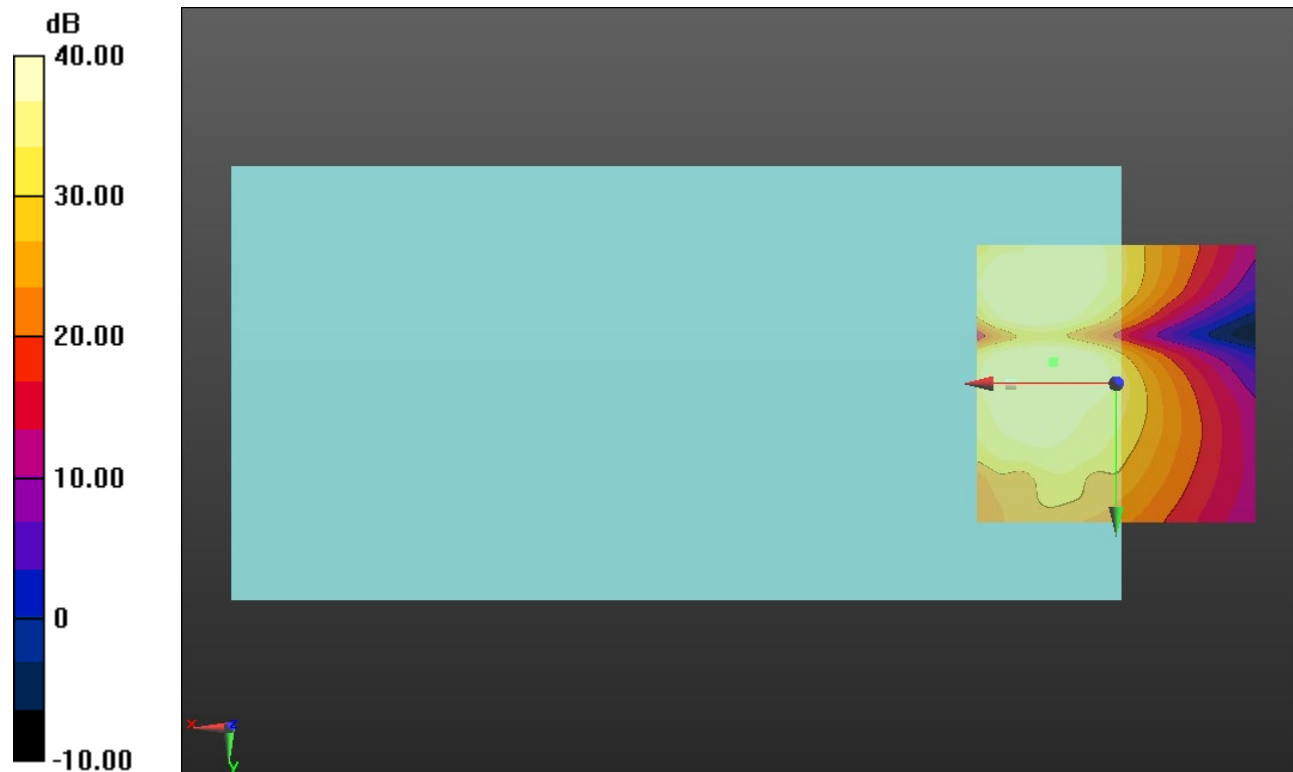
### Cursor:

ABM1/ABM2 = 42.17 dB

ABM1 comp = -6.10 dBA/m

BWC Factor = 0.16 dB

Location: 11.3, -3.8, 3.7 mm



0 dB = 1.000 = 0.00 dB

### LTE Band 4

Communication System: UID 0, 1@LTE (FDD) (0); Frequency: 1732.5 MHz;Duty Cycle: 1:1

### T-Coil scan (scan for ANSI C63.19 2011 compliance)/LTE Band 4\_64QAM\_20 MHz BW\_RB 100,0\_OTT\_Ch. 20175\_Port C/y (transversal) wideband at best S/N/ABM Freq

Resp(x,y,z,f) (1x1x1): Measurement grid: dx=10mm, dy=10mm

Signal Type: Audio File (.wav) 48k\_voice\_300-3000\_2s.wav

Output Gain: 72.83

Measure Window Start: 300ms

Measure Window Length: 2000ms

BWC applied: 10.80 dB

Device Reference Point: 0, 0, -6.3 mm

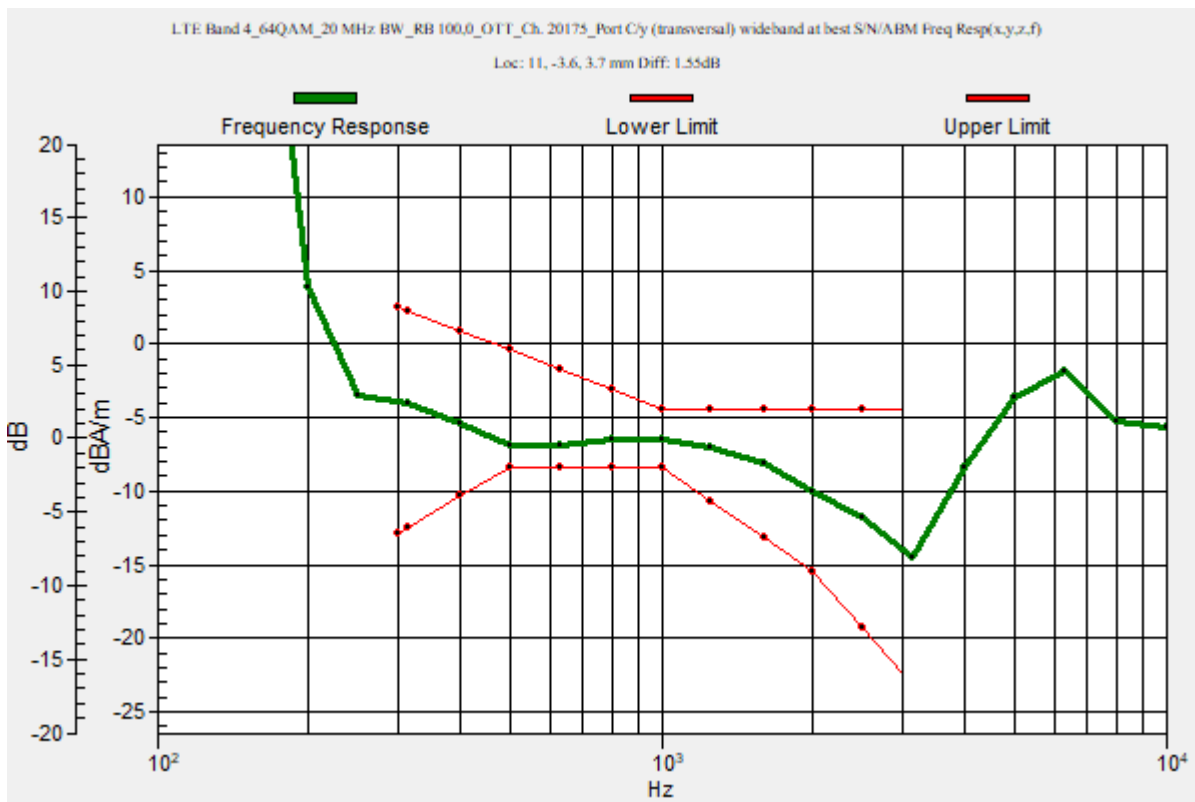
Category	Telephone parameters WD signal quality [(signal+noise)-to-noise ratio in decibels]
Category T1	0 dB to 10 dB
Category T2	10 dB to 20 dB
Category T3	20 dB to 30 dB
Category T4	> 30 dB

**Cursor:**

Diff = 1.55 dB

BWC Factor = 10.80 dB

Location: 11, -3.6, 3.7 mm



### LTE Band 4

Communication System: UID 0, 1@LTE (FDD) (0); Frequency: 1732.5 MHz; Duty Cycle: 1:1

Phantom section: TCoil Section

DASY5 Configuration:

- Probe: AM1DV3 - 3083; ; Calibrated: 1/10/2022
- Sensor-Surface: 0mm (Fix Surface)
- Electronics: DAE4 Sn1357; Calibrated: 1/11/2022
- Phantom: HAC Test Arch with AMCC; Type: SD HAC P01 BB
- Measurement SW: DASY52, Version 52.10 (4);SEMCAD X Version 14.6.14 (7483)

### T-Coil scan (scan for ANSI C63.19 2011 compliance)/LTE Band 4\_64QAM\_20 MHz BW\_RB 100,0\_OTT\_Ch. 20175\_Port C/y (transversal) Single Point/ABM SNR(x,y,z) (1x1x1):

Measurement grid: dx=10mm, dy=10mm

Signal Type: Audio File (.wav) 48k\_voice\_1kHz\_1s.wav

Output Gain: 37.14

Measure Window Start: 300ms

Measure Window Length: 1000ms

BWC applied: 0.16 dB

Device Reference Point: 0, 0, -6.3 mm

#### Cursor:

ABM1/ABM2 = 41.68 dB

ABM1 comp = -6.37 dBA/m

BWC Factor = 0.16 dB

Location: 11, -3.6, 3.7 mm



0 dB = 1.000 = 0.00 dB

### LTE Band 5

Communication System: UID 0, 1@LTE (FDD) (0); Frequency: 836.5 MHz;Duty Cycle: 1:1

### T-Coil scan (scan for ANSI C63.19 2011 compliance)/LTE Band 5\_64QAM\_10 MHz BW\_RB 50,0\_OTT\_Ch. 20525\_Port B/y (transversal) wideband at best S/N/ABM Freq

Resp(x,y,z,f) (1x1x1): Measurement grid: dx=10mm, dy=10mm

Signal Type: Audio File (.wav) 48k\_voice\_300-3000\_2s.wav

Output Gain: 72.83

Measure Window Start: 300ms

Measure Window Length: 2000ms

BWC applied: 10.80 dB

Device Reference Point: 0, 0, -6.3 mm

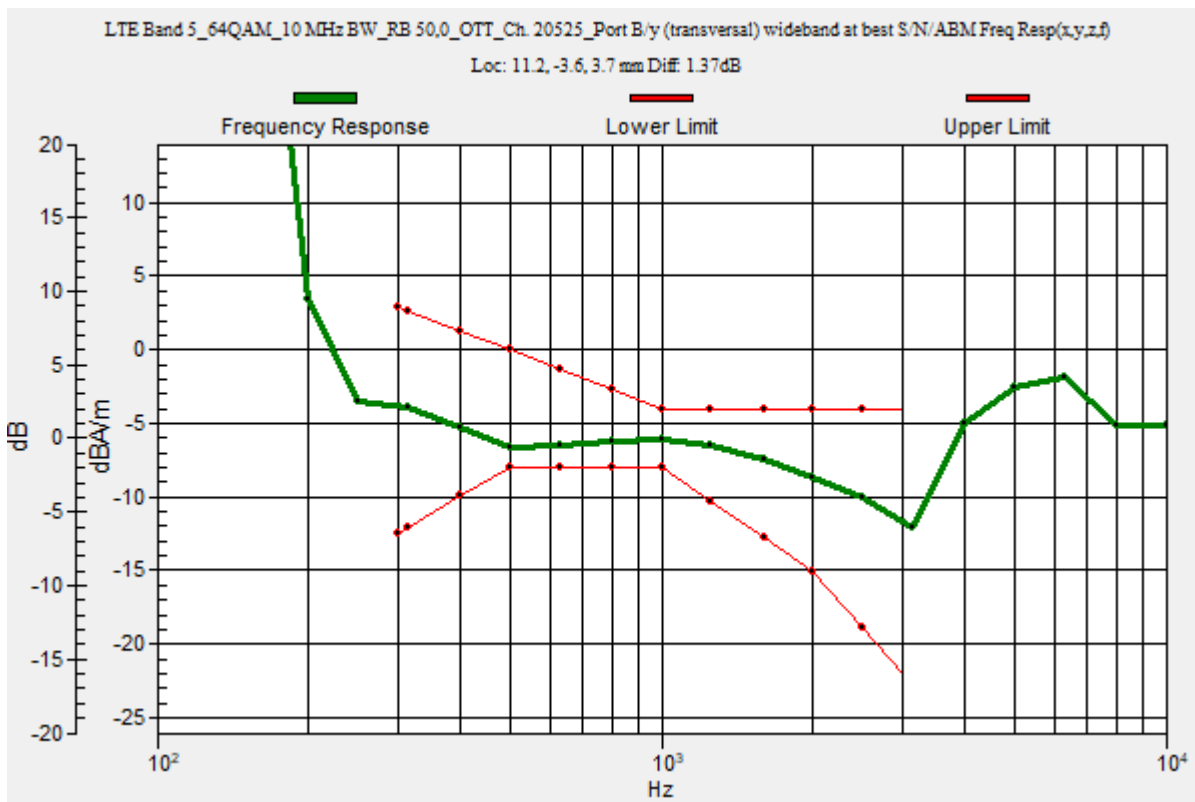
Category	Telephone parameters WD signal quality [(signal+noise)-to-noise ratio in decibels]
Category T1	0 dB to 10 dB
Category T2	10 dB to 20 dB
Category T3	20 dB to 30 dB
Category T4	> 30 dB

**Cursor:**

Diff = 1.37 dB

BWC Factor = 10.80 dB

Location: 11.2, -3.6, 3.7 mm



## LTE Band 5

Communication System: UID 0, 1@LTE (FDD) (0); Frequency: 836.5 MHz; Duty Cycle: 1:1

Phantom section: TCoil Section

DASY5 Configuration:

- Probe: AM1DV3 - 3083; ; Calibrated: 1/10/2022
- Sensor-Surface: 0mm (Fix Surface)
- Electronics: DAE4 Sn1357; Calibrated: 1/11/2022
- Phantom: HAC Test Arch with AMCC; Type: SD HAC P01 BB
- Measurement SW: DASY52, Version 52.10 (4);SEMCAD X Version 14.6.14 (7483)

### T-Coil scan (scan for ANSI C63.19 2011 compliance)/LTE Band 5\_64QAM\_10 MHz BW\_RB 50,0\_OTT\_Ch. 20525\_Port B/y (transversal) Single Point/ABM SNR(x,y,z)

(1x1x1): Measurement grid: dx=10mm, dy=10mm

Signal Type: Audio File (.wav) 48k\_voice\_1kHz\_1s.wav

Output Gain: 37.14

Measure Window Start: 300ms

Measure Window Length: 1000ms

BWC applied: 0.16 dB

Device Reference Point: 0, 0, -6.3 mm

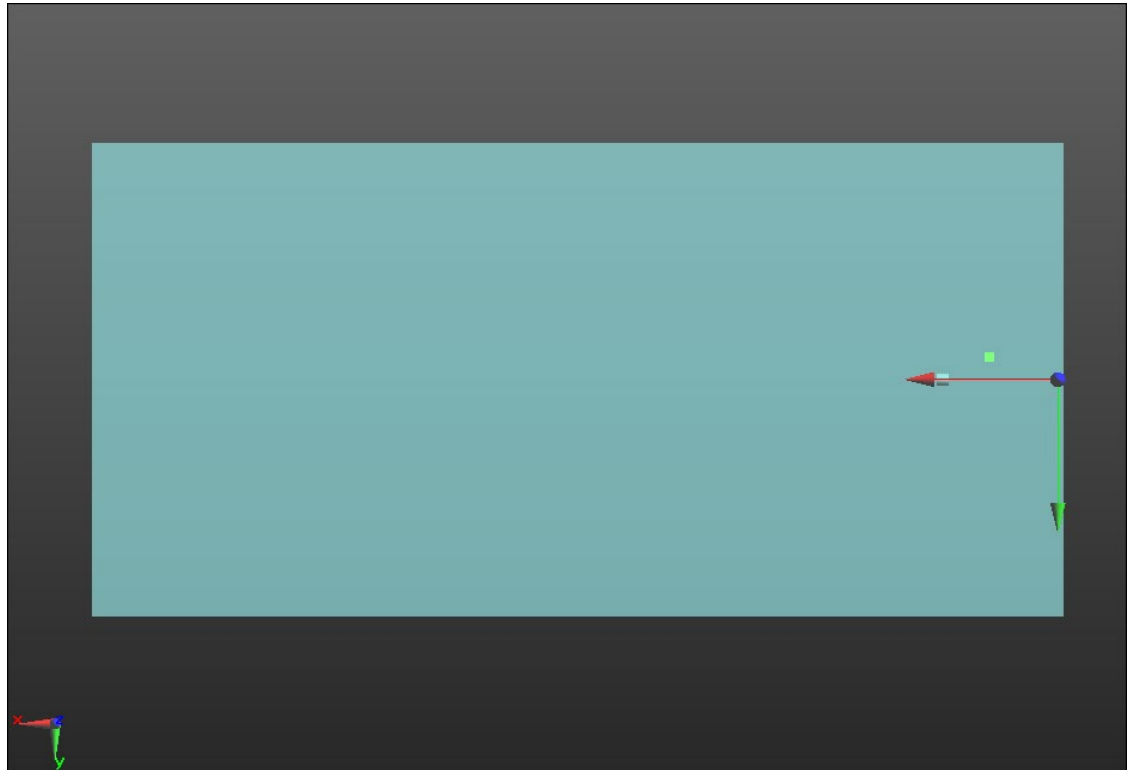
#### Cursor:

ABM1/ABM2 = 41.98 dB

ABM1 comp = -5.98 dBA/m

BWC Factor = 0.16 dB

Location: 11.2, -3.6, 3.7 mm



0 dB = 1.000 = 0.00 dB



### LTE Band 7

Communication System: UID 0, 1@LTE (FDD) (0); Frequency: 2535 MHz;Duty Cycle: 1:1

### T-Coil scan (scan for ANSI C63.19 2011 compliance)/LTE Band 7\_64QAM\_20 MHz BW\_RB 100,0\_OTT\_Ch. 21100\_Port C/y (transversal) wideband at best S/N/ABM Freq

Resp(x,y,z,f) (1x1x1): Measurement grid: dx=10mm, dy=10mm

Signal Type: Audio File (.wav) 48k\_voice\_300-3000\_2s.wav

Output Gain: 72.83

Measure Window Start: 300ms

Measure Window Length: 2000ms

BWC applied: 10.80 dB

Device Reference Point: 0, 0, -6.3 mm

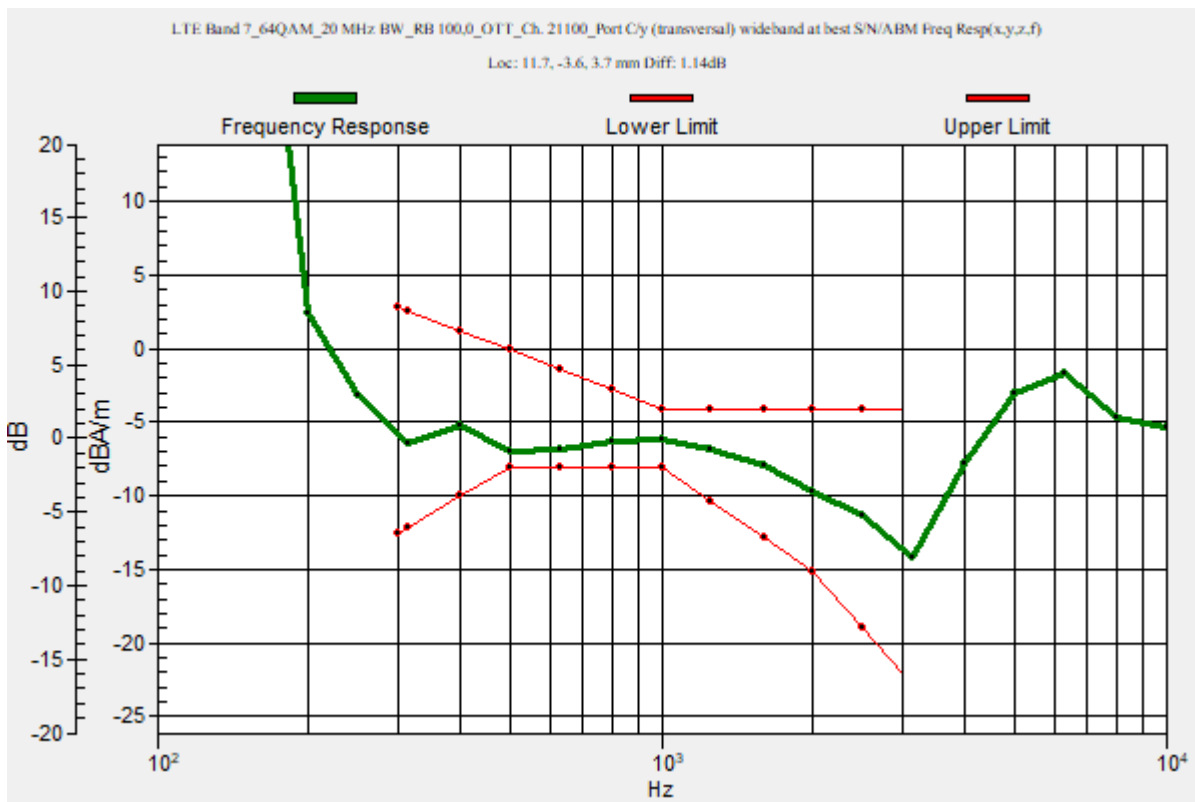
Category	Telephone parameters WD signal quality [(signal+noise)-to-noise ratio in decibels]
Category T1	0 dB to 10 dB
Category T2	10 dB to 20 dB
Category T3	20 dB to 30 dB
Category T4	> 30 dB

**Cursor:**

Diff = 1.14 dB

BWC Factor = 10.80 dB

Location: 11.7, -3.6, 3.7 mm



### LTE Band 7

Communication System: UID 0, 1@LTE (FDD) (0); Frequency: 2535 MHz; Duty Cycle: 1:1

Phantom section: TCoil Section

DASY5 Configuration:

- Probe: AM1DV3 - 3083; ; Calibrated: 1/10/2022
- Sensor-Surface: 0mm (Fix Surface)
- Electronics: DAE4 Sn1357; Calibrated: 1/11/2022
- Phantom: HAC Test Arch with AMCC; Type: SD HAC P01 BB
- Measurement SW: DASY52, Version 52.10 (4);SEMCAD X Version 14.6.14 (7483)

### T-Coil scan (scan for ANSI C63.19 2011 compliance)/LTE Band 7\_64QAM\_20 MHz BW\_RB 100,0\_OTT\_Ch. 21100\_Port C/y (transversal) 4.2mm 50 x 50/ABM Interpolated

SNR(x,y,z) (121x121x1): Interpolated grid: dx=1.000 mm, dy=1.000 mm

Signal Type: Audio File (.wav) 48k\_voice\_1kHz\_1s.wav

Output Gain: 37.14

Measure Window Start: 300ms

Measure Window Length: 1000ms

BWC applied: 0.16 dB

Device Reference Point: 0, 0, -6.3 mm

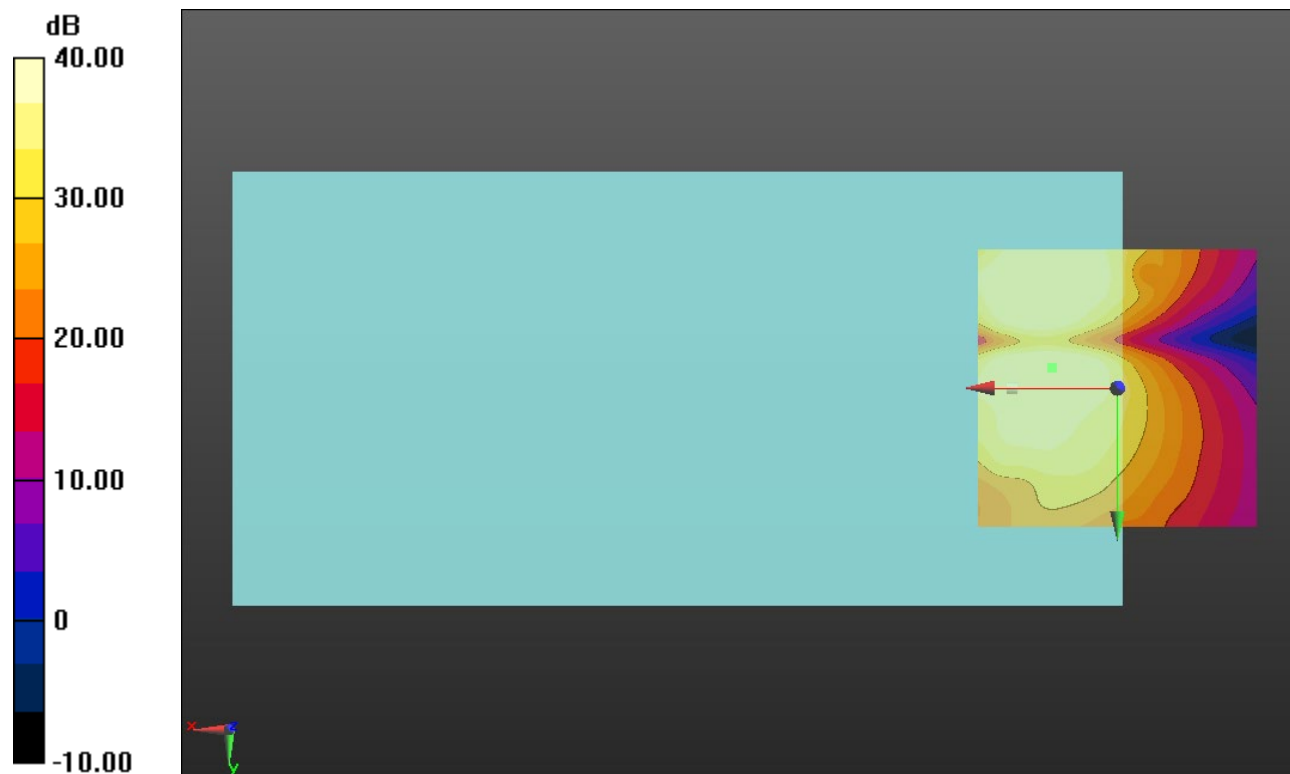
#### Cursor:

ABM1/ABM2 = 42.04 dB

ABM1 comp = -5.92 dBA/m

BWC Factor = 0.16 dB

Location: 11.7, -3.8, 3.7 mm



0 dB = 1.000 = 0.00 dB

### LTE Band 12

Communication System: UID 0, 1@LTE (FDD) (0); Frequency: 707.5 MHz;Duty Cycle: 1:1

### T-Coil scan (scan for ANSI C63.19 2011 compliance)/LTE Band 12\_64QAM\_10 MHz BW\_RB 50,0\_OTT\_Ch. 23095\_Port B/y (transversal) wideband at best S/N/ABM Freq

Resp(x,y,z,f) (1x1x1): Measurement grid: dx=10mm, dy=10mm

Signal Type: Audio File (.wav) 48k\_voice\_300-3000\_2s.wav

Output Gain: 72.83

Measure Window Start: 300ms

Measure Window Length: 2000ms

BWC applied: 10.80 dB

Device Reference Point: 0, 0, -6.3 mm

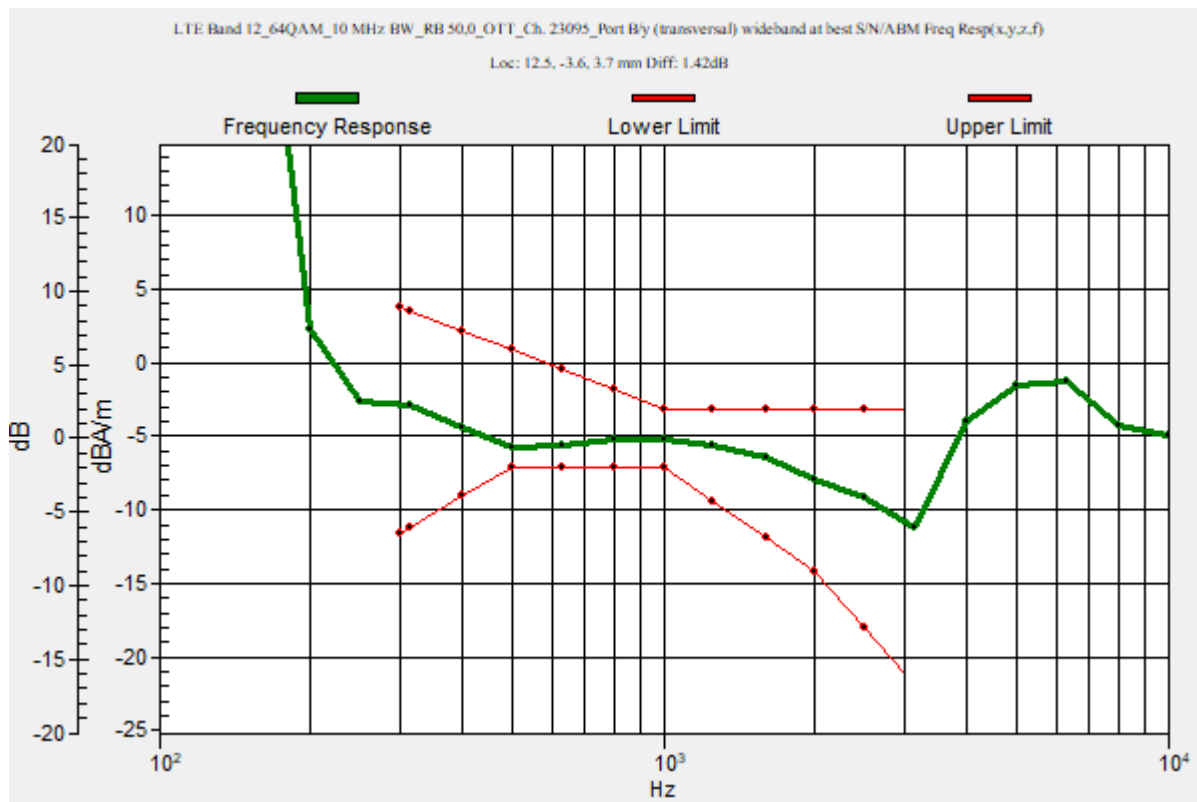
Category	Telephone parameters WD signal quality [(signal+noise)-to-noise ratio in decibels]
Category T1	0 dB to 10 dB
Category T2	10 dB to 20 dB
Category T3	20 dB to 30 dB
Category T4	> 30 dB

**Cursor:**

Diff = 1.42 dB

BWC Factor = 10.80 dB

Location: 12.5, -3.6, 3.7 mm



## LTE Band 12

Communication System: UID 0, 1@LTE (FDD) (0); Frequency: 707.5 MHz; Duty Cycle: 1:1

Phantom section: TCoil Section

DASY5 Configuration:

- Probe: AM1DV3 - 3083; ; Calibrated: 1/10/2022
- Sensor-Surface: 0mm (Fix Surface)
- Electronics: DAE4 Sn1357; Calibrated: 1/11/2022
- Phantom: HAC Test Arch with AMCC; Type: SD HAC P01 BB
- Measurement SW: DASY52, Version 52.10 (4);SEMCAD X Version 14.6.14 (7483)

### T-Coil scan (scan for ANSI C63.19 2011 compliance)/LTE Band 12\_64QAM\_10 MHz BW\_RB 50,0\_OTT\_Ch. 23095\_Port B/y (transversal) 4.2mm 50 x 50/ABM Interpolated

**SNR(x,y,z) (121x121x1):** Interpolated grid: dx=1.000 mm, dy=1.000 mm

Signal Type: Audio File (.wav) 48k\_voice\_1kHz\_1s.wav

Output Gain: 37.14

Measure Window Start: 300ms

Measure Window Length: 1000ms

BWC applied: 0.16 dB

Device Reference Point: 0, 0, -6.3 mm

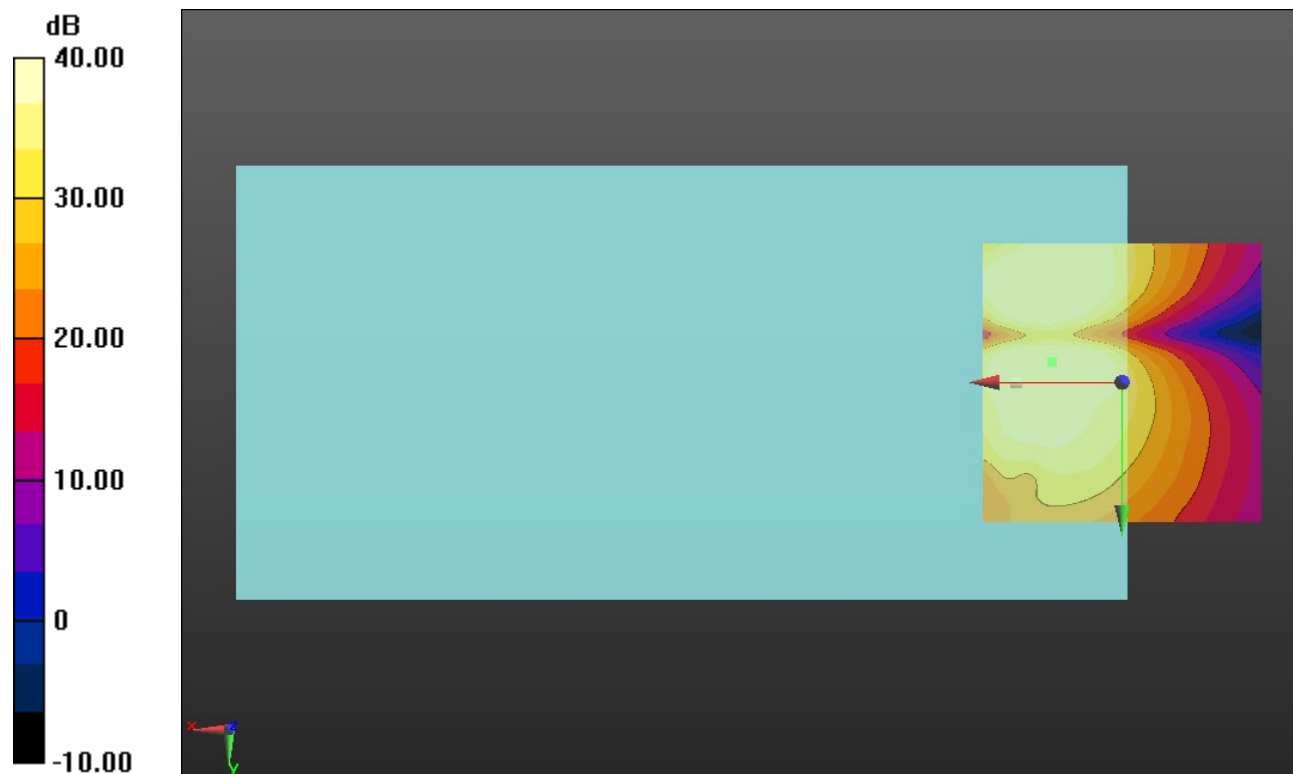
#### Cursor:

ABM1/ABM2 = 42.21 dB

ABM1 comp = -5.22 dBA/m

BWC Factor = 0.16 dB

Location: 12.5, -3.8, 3.7 mm



0 dB = 1.000 = 0.00 dB

### LTE Band 13

Communication System: UID 0, 1@LTE (FDD) (0); Frequency: 782 MHz;Duty Cycle: 1:1

### T-Coil scan (scan for ANSI C63.19 2011 compliance)/LTE Band 13\_64QAM\_10 MHz BW\_RB 50,0\_OTT\_Ch. 23230\_Port B/y (transversal) wideband at best S/N/ABM Freq

Resp(x,y,z,f) (1x1x1): Measurement grid: dx=10mm, dy=10mm

Signal Type: Audio File (.wav) 48k\_voice\_300-3000\_2s.wav

Output Gain: 72.83

Measure Window Start: 300ms

Measure Window Length: 2000ms

BWC applied: 10.80 dB

Device Reference Point: 0, 0, -6.3 mm

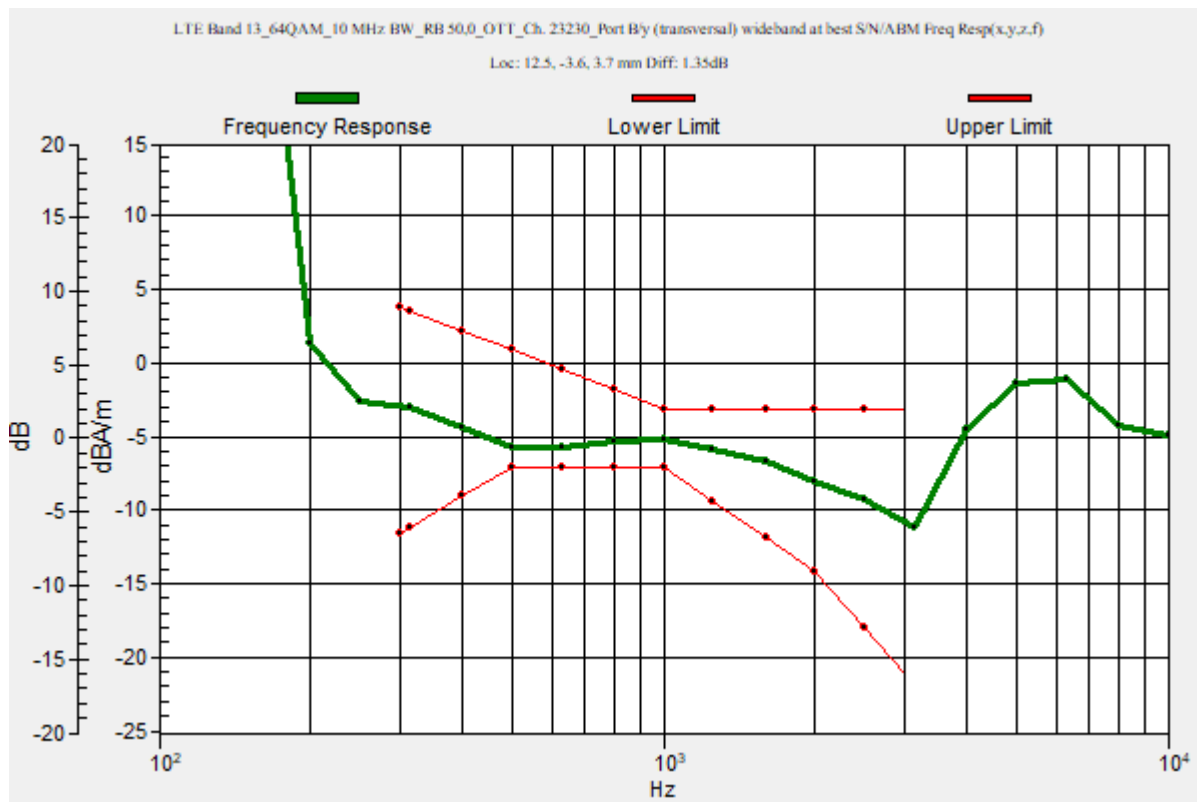
Category	Telephone parameters WD signal quality [(signal+noise)-to-noise ratio in decibels]
Category T1	0 dB to 10 dB
Category T2	10 dB to 20 dB
Category T3	20 dB to 30 dB
Category T4	> 30 dB

**Cursor:**

Diff = 1.35 dB

BWC Factor = 10.80 dB

Location: 12.5, -3.6, 3.7 mm



### LTE Band 13

Communication System: UID 0, 1@LTE (FDD) (0); Frequency: 782 MHz; Duty Cycle: 1:1

Phantom section: TCoil Section

DASY5 Configuration:

- Probe: AM1DV3 - 3083; ; Calibrated: 1/10/2022
- Sensor-Surface: 0mm (Fix Surface)
- Electronics: DAE4 Sn1357; Calibrated: 1/11/2022
- Phantom: HAC Test Arch with AMCC; Type: SD HAC P01 BB
- Measurement SW: DASY52, Version 52.10 (4);SEMCAD X Version 14.6.14 (7483)

### T-Coil scan (scan for ANSI C63.19 2011 compliance)/LTE Band 13\_64QAM\_10 MHz BW\_RB 50,0\_OTT\_Ch. 23230\_Port B/y (transversal) Single Point/ABM SNR(x,y,z)

(1x1x1): Measurement grid: dx=10mm, dy=10mm

Signal Type: Audio File (.wav) 48k\_voice\_1kHz\_1s.wav

Output Gain: 37.14

Measure Window Start: 300ms

Measure Window Length: 1000ms

BWC applied: 0.16 dB

Device Reference Point: 0, 0, -6.3 mm

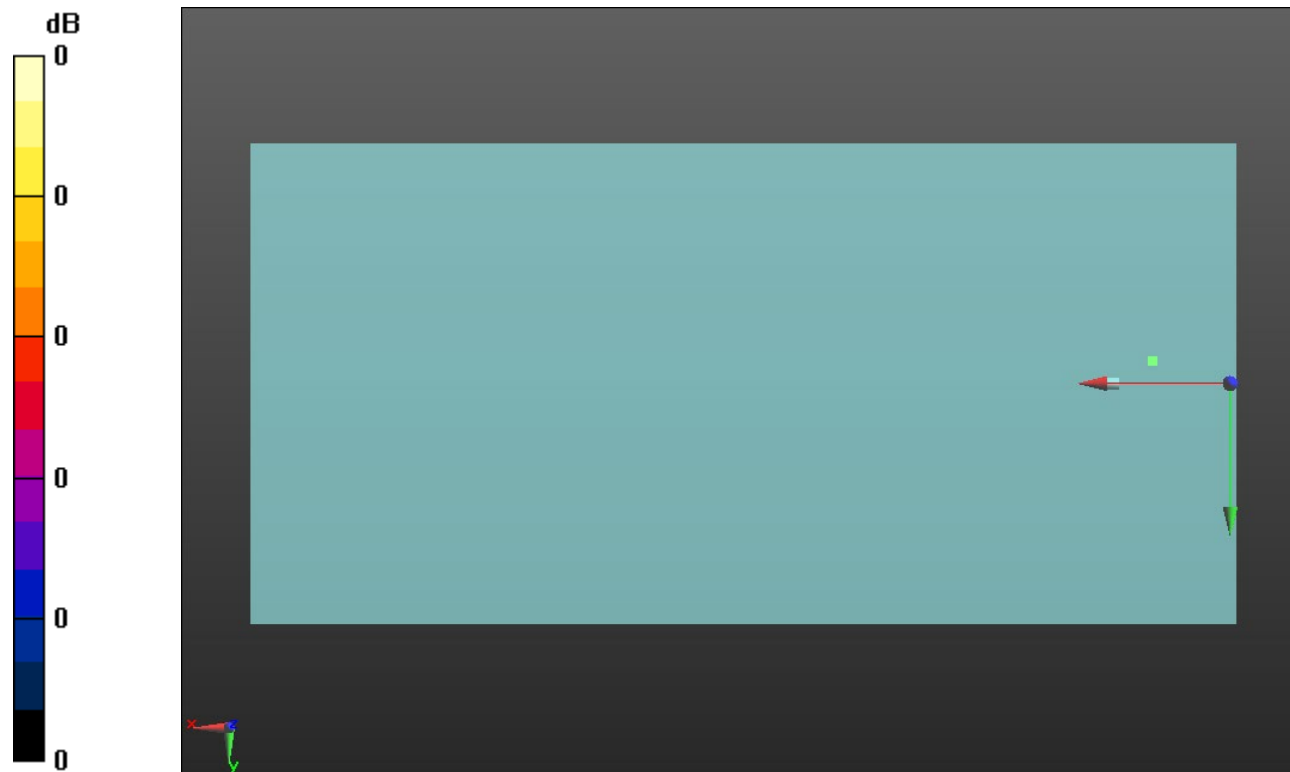
#### Cursor:

ABM1/ABM2 = 41.43 dB

ABM1 comp = -5.14 dBA/m

BWC Factor = 0.16 dB

Location: 12.5, -3.6, 3.7 mm



0 dB = 1.000 = 0.00 dB

### LTE Band 17

Communication System: UID 0, 1@LTE (FDD) (0); Frequency: 710 MHz;Duty Cycle: 1:1

### T-Coil scan (scan for ANSI C63.19 2011 compliance)/LTE Band 17\_64QAM\_10 MHz BW\_RB 50,0\_OTT\_Ch. 23790\_Port B/y (transversal) wideband at best S/N/ABM Freq

Resp(x,y,z,f) (1x1x1): Measurement grid: dx=10mm, dy=10mm

Signal Type: Audio File (.wav) 48k\_voice\_300-3000\_2s.wav

Output Gain: 72.83

Measure Window Start: 300ms

Measure Window Length: 2000ms

BWC applied: 10.80 dB

Device Reference Point: 0, 0, -6.3 mm

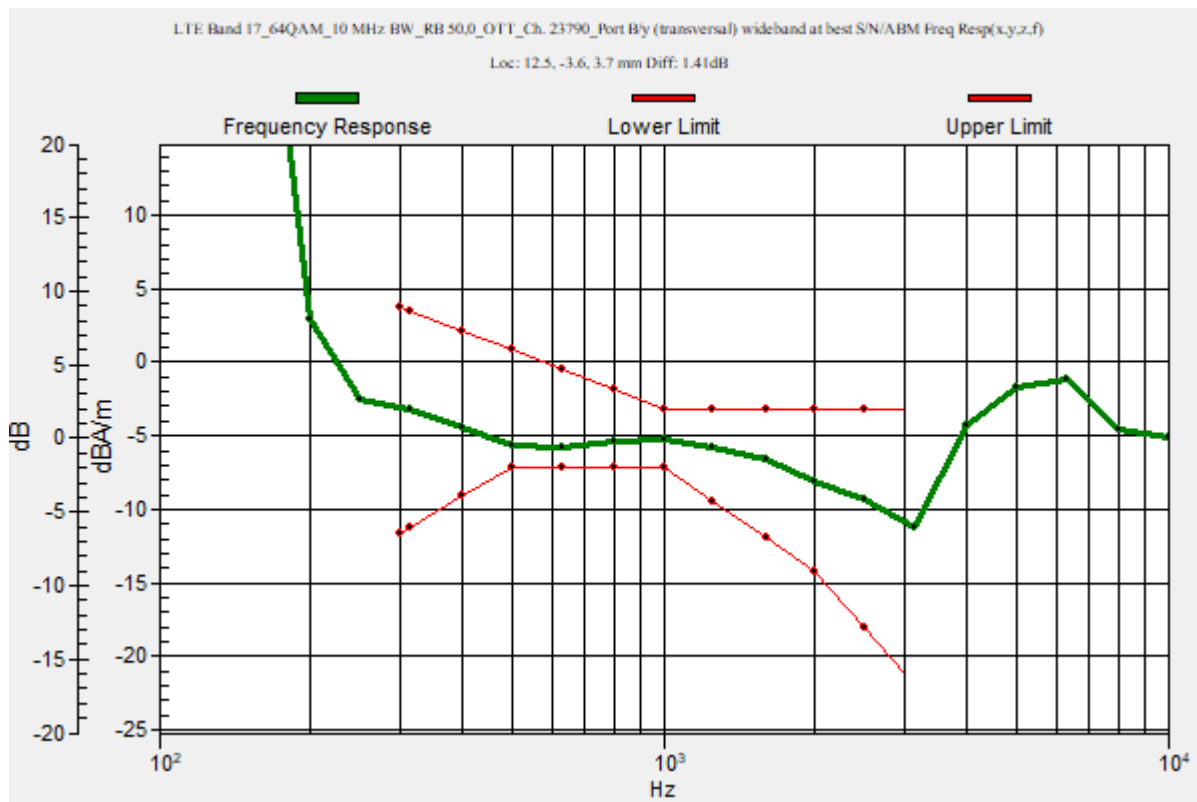
Category	Telephone parameters WD signal quality [(signal+noise)-to-noise ratio in decibels]
Category T1	0 dB to 10 dB
Category T2	10 dB to 20 dB
Category T3	20 dB to 30 dB
Category T4	> 30 dB

**Cursor:**

Diff = 1.41 dB

BWC Factor = 10.80 dB

Location: 12.5, -3.6, 3.7 mm



### LTE Band 17

Communication System: UID 0, 1@LTE (FDD) (0); Frequency: 710 MHz; Duty Cycle: 1:1

Phantom section: TCoil Section

DASY5 Configuration:

- Probe: AM1DV3 - 3083; ; Calibrated: 1/10/2022
- Sensor-Surface: 0mm (Fix Surface)
- Electronics: DAE4 Sn1357; Calibrated: 1/11/2022
- Phantom: HAC Test Arch with AMCC; Type: SD HAC P01 BB
- Measurement SW: DASY52, Version 52.10 (4);SEMCAD X Version 14.6.14 (7483)

### T-Coil scan (scan for ANSI C63.19 2011 compliance)/LTE Band 17\_64QAM\_10 MHz BW\_RB 50,0\_OTT\_Ch. 23790\_Port B/y (transversal) Single Point/ABM SNR(x,y,z)

(1x1x1): Measurement grid: dx=10mm, dy=10mm

Signal Type: Audio File (.wav) 48k\_voice\_1kHz\_1s.wav

Output Gain: 37.14

Measure Window Start: 300ms

Measure Window Length: 1000ms

BWC applied: 0.16 dB

Device Reference Point: 0, 0, -6.3 mm

#### Cursor:

ABM1/ABM2 = 42.04 dB

ABM1 comp = -5.13 dBA/m

BWC Factor = 0.16 dB

Location: 12.5, -3.6, 3.7 mm



0 dB = 1.000 = 0.00 dB



### LTE Band 25

Communication System: UID 0, 1@LTE (FDD) (0); Frequency: 1882.5 MHz;Duty Cycle: 1:1

### T-Coil scan (scan for ANSI C63.19 2011 compliance)/LTE Band 25\_64QAM\_20 MHz BW\_RB 100,0\_OTT\_Ch. 26365\_Port C/y (transversal) wideband at best S/N/ABM Freq

Resp(x,y,z,f) (1x1x1): Measurement grid: dx=10mm, dy=10mm

Signal Type: Audio File (.wav) 48k\_voice\_300-3000\_2s.wav

Output Gain: 72.83

Measure Window Start: 300ms

Measure Window Length: 2000ms

BWC applied: 10.80 dB

Device Reference Point: 0, 0, -6.3 mm

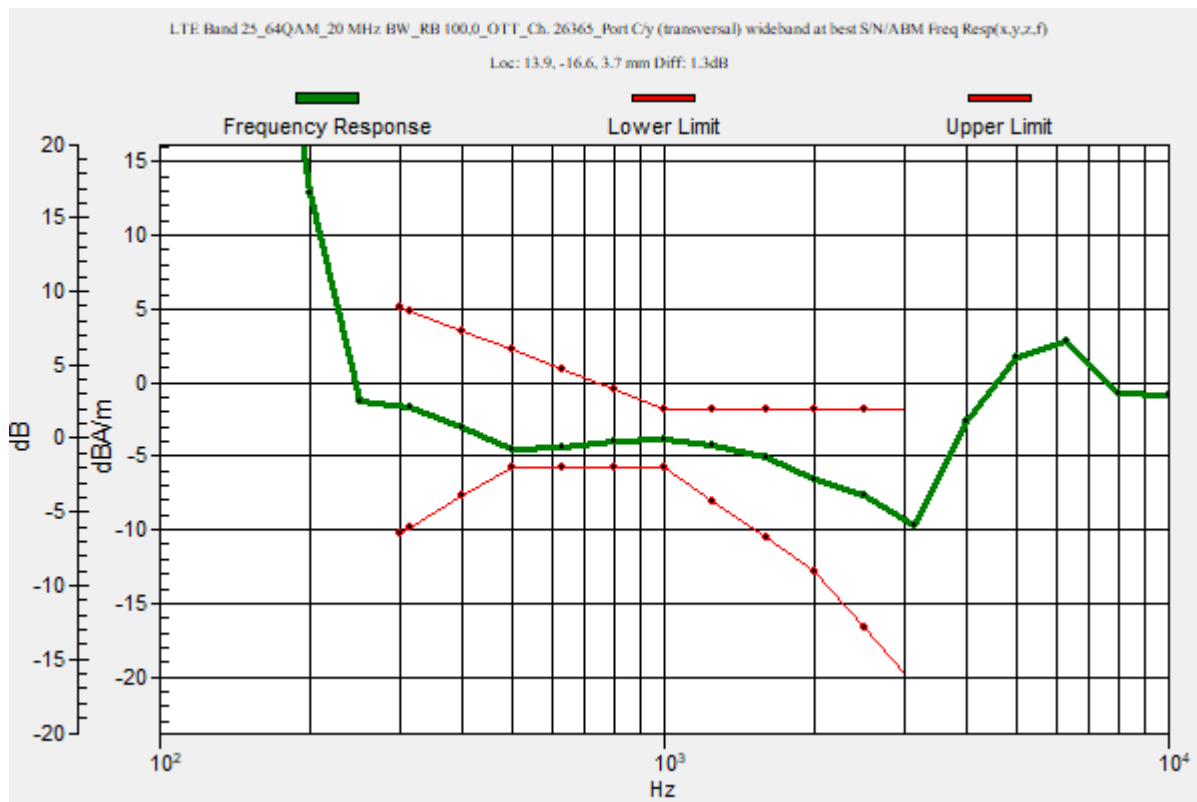
Category	Telephone parameters WD signal quality [(signal+noise)-to-noise ratio in decibels]
Category T1	0 dB to 10 dB
Category T2	10 dB to 20 dB
Category T3	20 dB to 30 dB
Category T4	> 30 dB

**Cursor:**

Diff = 1.30 dB

BWC Factor = 10.80 dB

Location: 13.9, -16.6, 3.7 mm



### LTE Band 25

Communication System: UID 0, 1@LTE (FDD) (0); Frequency: 1882.5 MHz; Duty Cycle: 1:1

Phantom section: TCoil Section

DASY5 Configuration:

- Probe: AM1DV3 - 3083; ; Calibrated: 1/10/2022
- Sensor-Surface: 0mm (Fix Surface)
- Electronics: DAE4 Sn1357; Calibrated: 1/11/2022
- Phantom: HAC Test Arch with AMCC; Type: SD HAC P01 BB
- Measurement SW: DASY52, Version 52.10 (4);SEMCAD X Version 14.6.14 (7483)

### T-Coil scan (scan for ANSI C63.19 2011 compliance)/LTE Band 25\_64QAM\_20 MHz BW\_RB 100,0\_OTT\_Ch. 26365\_Port C/y (transversal) 4.2mm 50 x 50/ABM Interpolated

**SNR(x,y,z) (121x121x1):** Interpolated grid: dx=1.000 mm, dy=1.000 mm

Signal Type: Audio File (.wav) 48k\_voice\_1kHz\_1s.wav

Output Gain: 37.14

Measure Window Start: 300ms

Measure Window Length: 1000ms

BWC applied: 0.16 dB

Device Reference Point: 0, 0, -6.3 mm

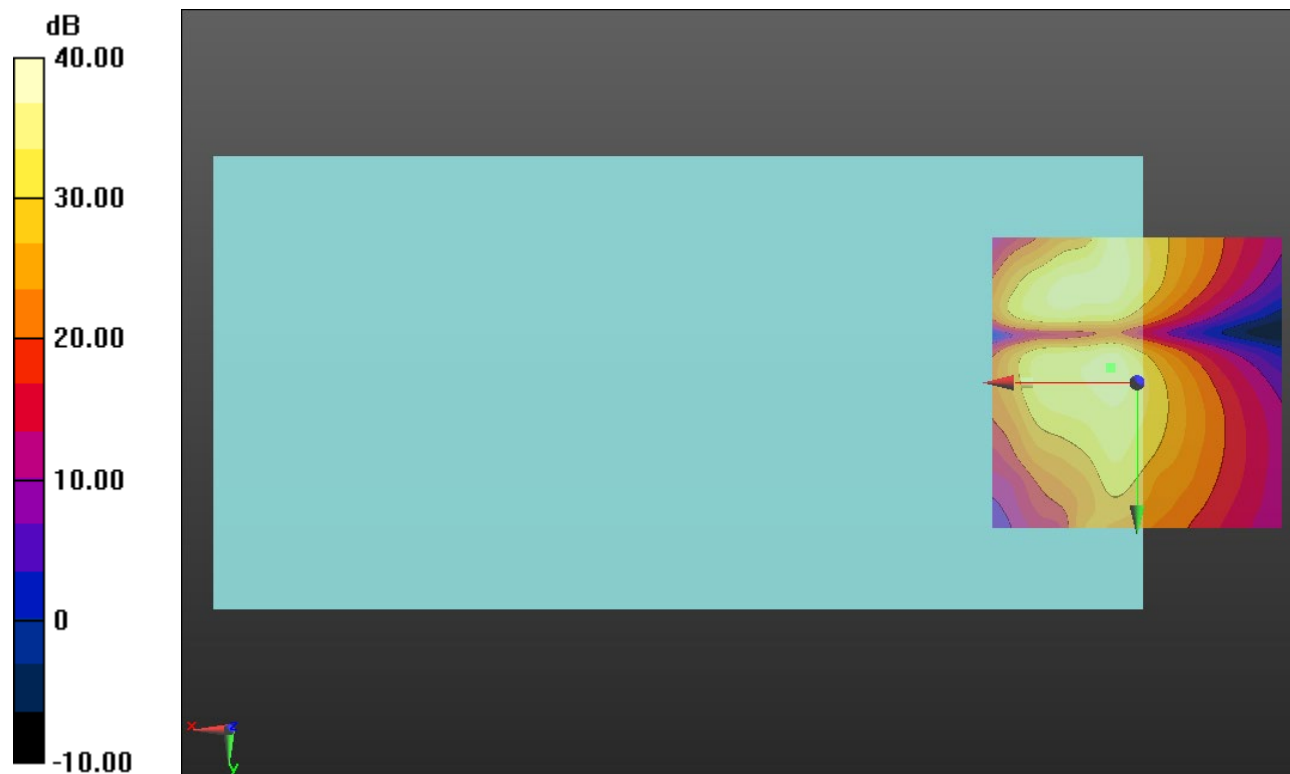
#### Cursor:

ABM1/ABM2 = 39.04 dB

ABM1 comp = -13.54 dBA/m

BWC Factor = 0.16 dB

Location: 4.6, -2.5, 3.7 mm



0 dB = 1.000 = 0.00 dB

### LTE Band 26

Communication System: UID 0, 1@LTE (FDD) (0); Frequency: 831.5 MHz;Duty Cycle: 1:1

### T-Coil scan (scan for ANSI C63.19 2011 compliance)/LTE Band 26\_64QAM\_10 MHz BW\_RB 50,0\_OTT\_Ch. 26865\_Port B/y (transversal) wideband at best S/N/ABM Freq

Resp(x,y,z,f) (1x1x1): Measurement grid: dx=10mm, dy=10mm

Signal Type: Audio File (.wav) 48k\_voice\_300-3000\_2s.wav

Output Gain: 72.83

Measure Window Start: 300ms

Measure Window Length: 2000ms

BWC applied: 10.80 dB

Device Reference Point: 0, 0, -6.3 mm

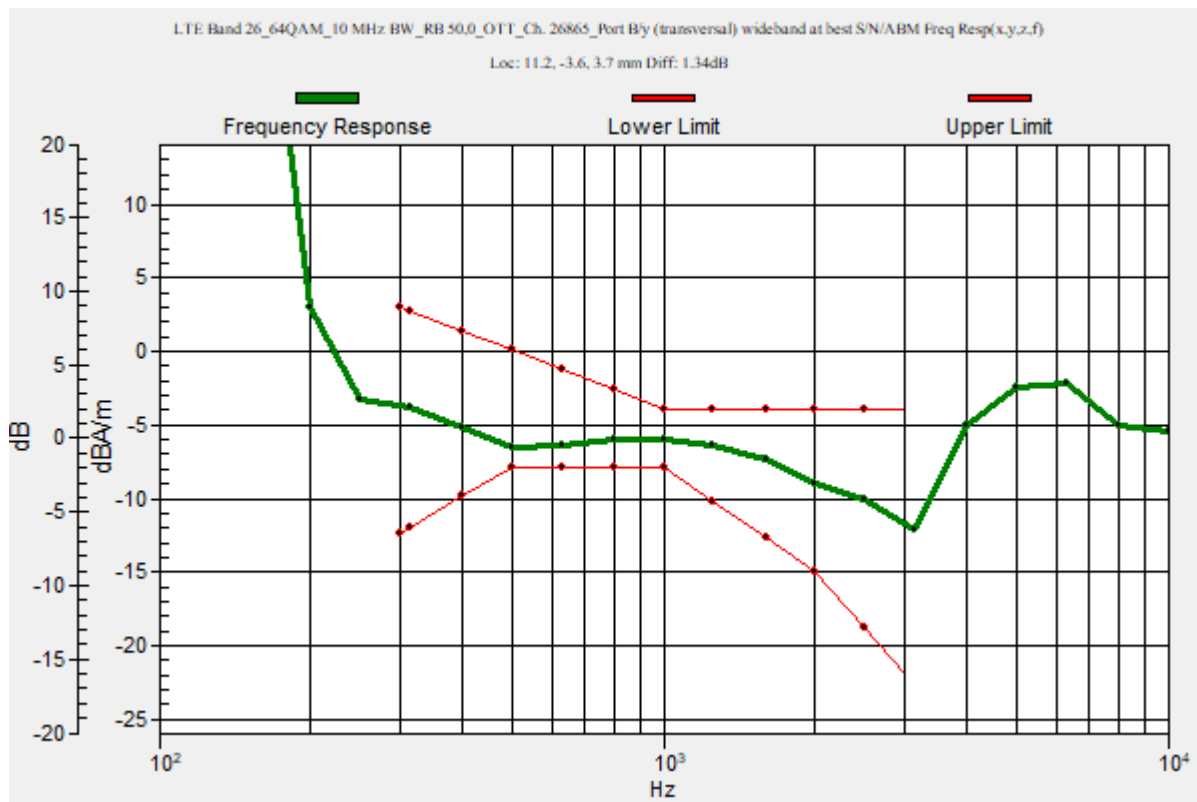
Category	Telephone parameters WD signal quality [(signal+noise)-to-noise ratio in decibels]
Category T1	0 dB to 10 dB
Category T2	10 dB to 20 dB
Category T3	20 dB to 30 dB
Category T4	> 30 dB

**Cursor:**

Diff = 1.34 dB

BWC Factor = 10.80 dB

Location: 11.2, -3.6, 3.7 mm



## LTE Band 26

Communication System: UID 0, 1@LTE (FDD) (0); Frequency: 831.5 MHz; Duty Cycle: 1:1

Phantom section: TCoil Section

DASY5 Configuration:

- Probe: AM1DV3 - 3083; ; Calibrated: 1/10/2022
- Sensor-Surface: 0mm (Fix Surface)
- Electronics: DAE4 Sn1357; Calibrated: 1/11/2022
- Phantom: HAC Test Arch with AMCC; Type: SD HAC P01 BB
- Measurement SW: DASY52, Version 52.10 (4); SEMCAD X Version 14.6.14 (7483)

### T-Coil scan (scan for ANSI C63.19 2011 compliance)/LTE Band 26\_64QAM\_10 MHz BW\_RB 50,0\_OTT\_Ch. 26865\_Port B/y (transversal) 4.2mm 50 x 50/ABM Interpolated

**SNR(x,y,z) (121x121x1):** Interpolated grid: dx=1.000 mm, dy=1.000 mm

Signal Type: Audio File (.wav) 48k\_voice\_1kHz\_1s.wav

Output Gain: 37.14

Measure Window Start: 300ms

Measure Window Length: 1000ms

BWC applied: 0.16 dB

Device Reference Point: 0, 0, -6.3 mm

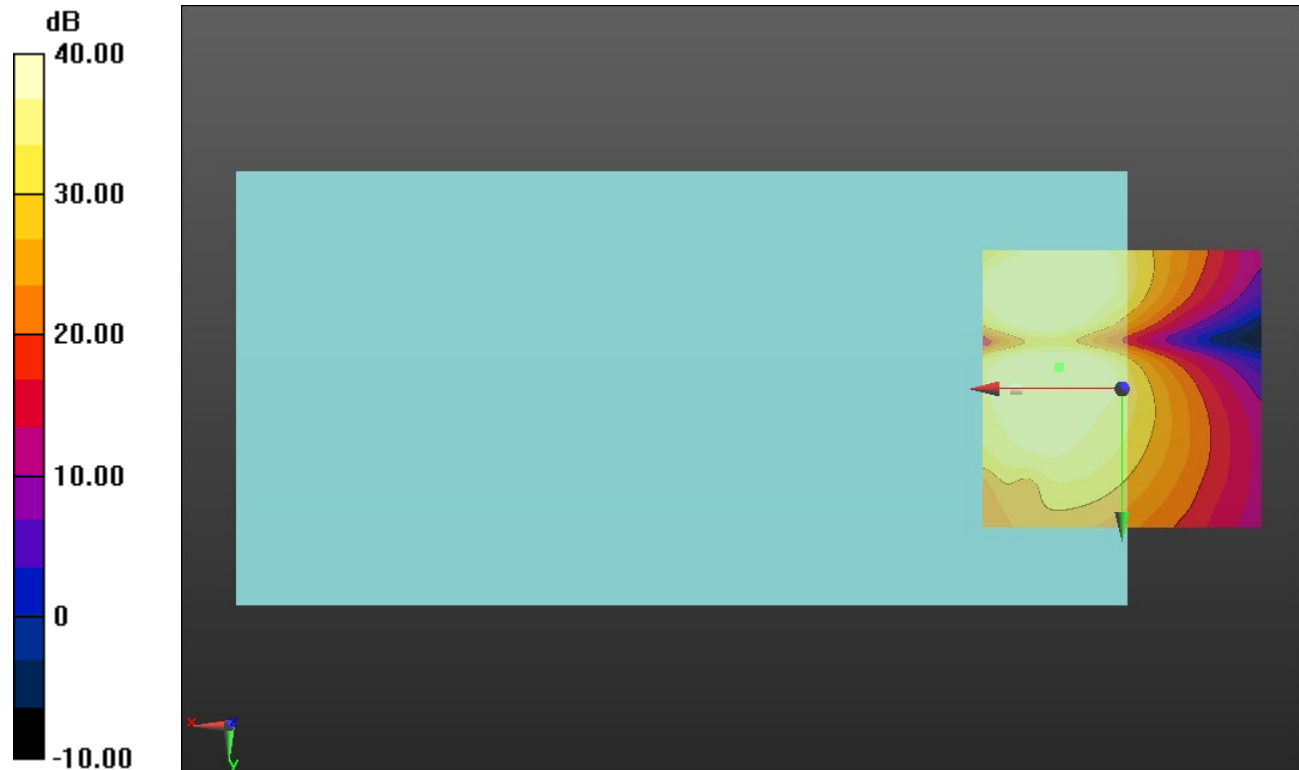
#### Cursor:

ABM1/ABM2 = 42.33 dB

ABM1 comp = -5.99 dBA/m

BWC Factor = 0.16 dB

Location: 11.3, -3.8, 3.7 mm



0 dB = 1.000 = 0.00 dB

### LTE Band 30

Communication System: UID 0, 1@LTE (FDD) (0); Frequency: 2310 MHz;Duty Cycle: 1:1

### T-Coil scan (scan for ANSI C63.19 2011 compliance)/LTE Band 30\_64QAM\_10 MHz BW\_RB 50,0\_OTT\_Ch. 27710\_Port C/y (transversal) wideband at best S/N/ABM Freq

Resp(x,y,z,f) (1x1x1): Measurement grid: dx=10mm, dy=10mm

Signal Type: Audio File (.wav) 48k\_voice\_300-3000\_2s.wav

Output Gain: 72.83

Measure Window Start: 300ms

Measure Window Length: 2000ms

BWC applied: 10.80 dB

Device Reference Point: 0, 0, -6.3 mm

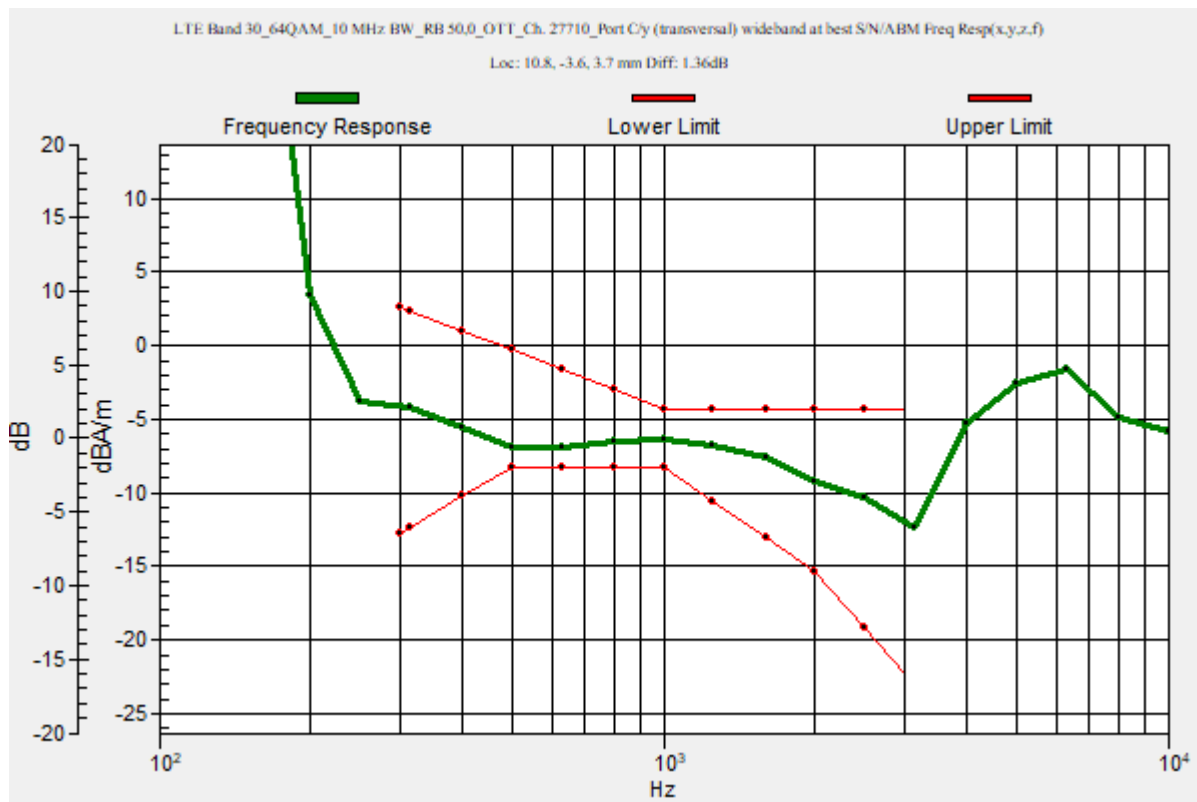
Category	Telephone parameters WD signal quality [(signal+noise)-to-noise ratio in decibels]
Category T1	0 dB to 10 dB
Category T2	10 dB to 20 dB
Category T3	20 dB to 30 dB
Category T4	> 30 dB

**Cursor:**

Diff = 1.36 dB

BWC Factor = 10.80 dB

Location: 10.8, -3.6, 3.7 mm



### LTE Band 30

Communication System: UID 0, 1@LTE (FDD) (0); Frequency: 2310 MHz; Duty Cycle: 1:1

Phantom section: TCoil Section

DASY5 Configuration:

- Probe: AM1DV3 - 3083; ; Calibrated: 1/10/2022
- Sensor-Surface: 0mm (Fix Surface)
- Electronics: DAE4 Sn1357; Calibrated: 1/11/2022
- Phantom: HAC Test Arch with AMCC; Type: SD HAC P01 BB
- Measurement SW: DASY52, Version 52.10 (4);SEMCAD X Version 14.6.14 (7495)

### T-Coil scan (scan for ANSI C63.19 2011 compliance)/LTE Band 30\_64QAM\_10 MHz BW\_RB 50,0\_OTT\_Ch. 27710\_Port C/y (transversal) 4.2mm 50 x 50/ABM Interpolated SNR(x,y,z) (121x121x1): Interpolated grid: dx=1.000 mm, dy=1.000 mm

Signal Type: Audio File (.wav) 48k\_voice\_1kHz\_1s.wav

Output Gain: 37.14

Measure Window Start: 300ms

Measure Window Length: 1000ms

BWC applied: 0.16 dB

Device Reference Point: 0, 0, -6.3 mm

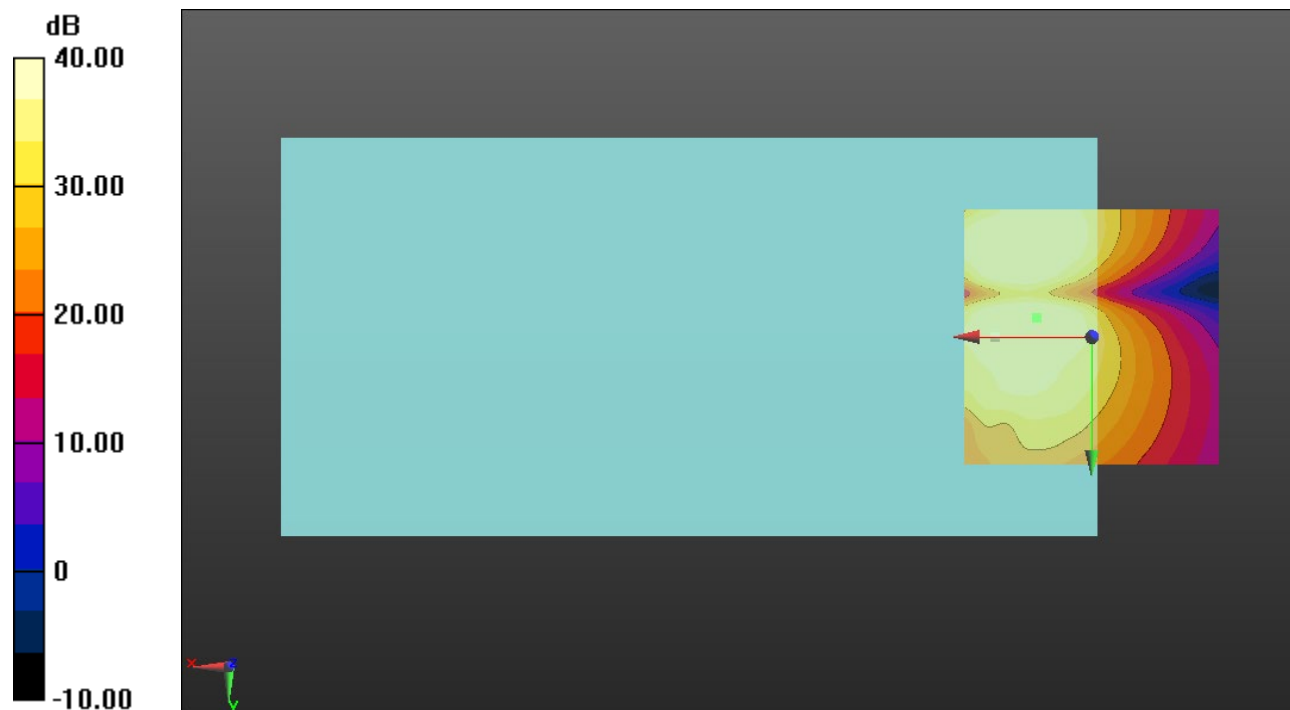
#### Cursor:

ABM1/ABM2 = 42.31 dB

ABM1 comp = -6.26 dBA/m

BWC Factor = 0.16 dB

Location: 10.8, -3.8, 3.7 mm



0 dB = 1.000 = 0.00 dB

### LTE Band 41

Communication System: UID 0, 1@LTE (TDD) (0); Frequency: 2593 MHz;Duty Cycle: 1:1.59956

### T-Coil scan (scan for ANSI C63.19 2011 compliance)/LTE Band 41\_QPSK\_20 MHz BW\_RB 1,99\_OTT\_Ch. 40620\_Port D/z (axial) wideband at best S/N/ABM Freq

Resp(x,y,z,f) (1x1x1): Measurement grid: dx=10mm, dy=10mm

Signal Type: Audio File (.wav) 48k\_voice\_300-3000\_2s.wav

Output Gain: 72.83

Measure Window Start: 300ms

Measure Window Length: 2000ms

BWC applied: 10.80 dB

Device Reference Point: 0, 0, -6.3 mm

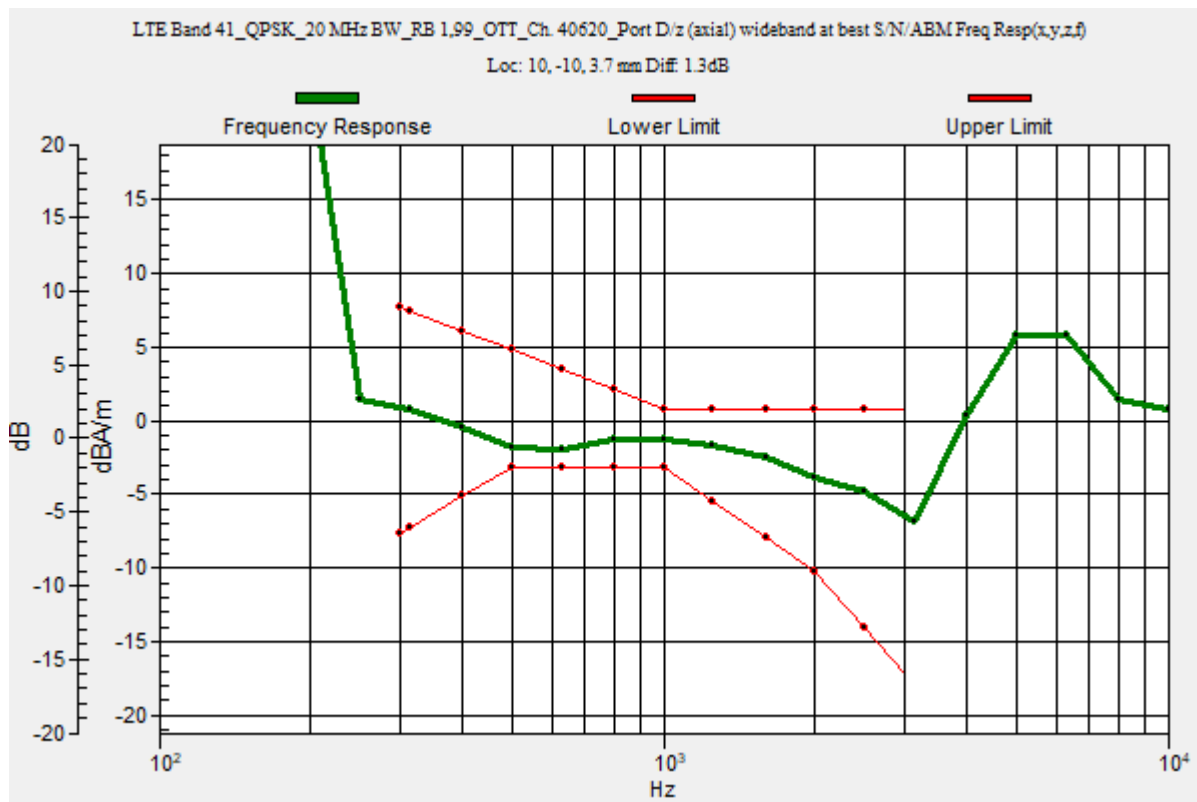
Category	Telephone parameters WD signal quality [(signal+noise)-to-noise ratio in decibels]
Category T1	0 dB to 10 dB
Category T2	10 dB to 20 dB
Category T3	20 dB to 30 dB
Category T4	> 30 dB

**Cursor:**

Diff = 1.30 dB

BWC Factor = 10.80 dB

Location: 10, -10, 3.7 mm



### LTE Band 41

Communication System: UID 0, 1@LTE (TDD) (0); Frequency: 2593 MHz; Duty Cycle: 1:1.59956

Phantom section: TCoil Section

DASY5 Configuration:

- Probe: AM1DV3 - 3083; ; Calibrated: 1/10/2022
- Sensor-Surface: 0mm (Fix Surface)
- Electronics: DAE4 Sn1357; Calibrated: 1/11/2022
- Phantom: HAC Test Arch with AMCC; Type: SD HAC P01 BB
- Measurement SW: DASY52, Version 52.10 (4);SEMCAD X Version 14.6.14 (7483)

### T-Coil scan (scan for ANSI C63.19 2011 compliance)/LTE Band 41\_QPSK\_20 MHz BW\_RB 1,99\_OTT\_Ch. 40620\_Port D/z (axial) Single Point/ABM SNR(x,y,z) (1x1x1):

Measurement grid: dx=10mm, dy=10mm

Signal Type: Audio File (.wav) 48k\_voice\_1kHz\_1s.wav

Output Gain: 37.14

Measure Window Start: 300ms

Measure Window Length: 1000ms

BWC applied: 0.16 dB

Device Reference Point: 0, 0, -6.3 mm

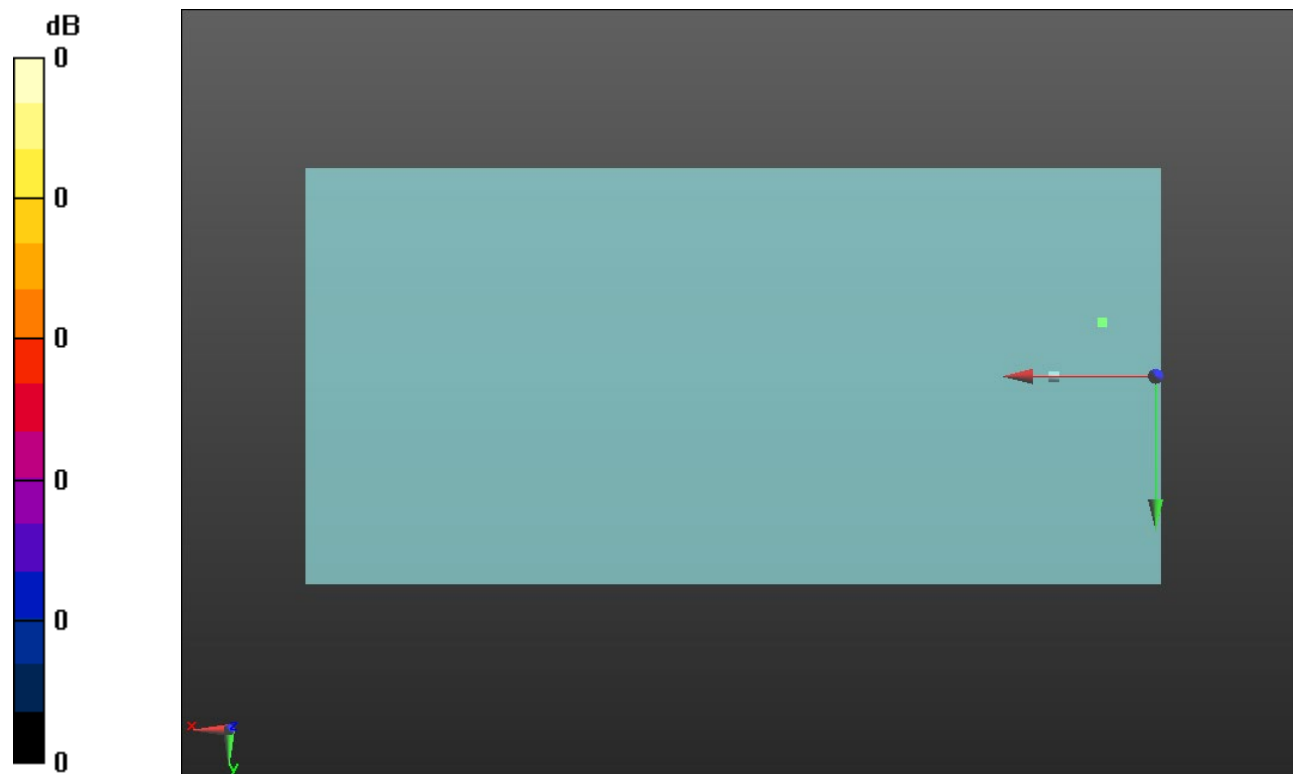
#### Cursor:

ABM1/ABM2 = 33.05 dB

ABM1 comp = -1.11 dBA/m

BWC Factor = 0.16 dB

Location: 10, -10, 3.7 mm



0 dB = 1.000 = 0.00 dB



### LTE Band 48

Communication System: UID 0, 1@LTE (TDD) (0); Frequency: 3625 MHz;Duty Cycle: 1:1.59956

### T-Coil scan (scan for ANSI C63.19 2011 compliance)/LTE Band 48\_QPSK\_20 MHz BW\_RB 1,99\_OTT\_Ch. 55990\_Port D/z (axial) wideband at best S/N/ABM Freq

Resp(x,y,z,f) (1x1x1): Measurement grid: dx=10mm, dy=10mm

Signal Type: Audio File (.wav) 48k\_voice\_300-3000\_2s.wav

Output Gain: 72.83

Measure Window Start: 300ms

Measure Window Length: 2000ms

BWC applied: 10.80 dB

Device Reference Point: 0, 0, -6.3 mm

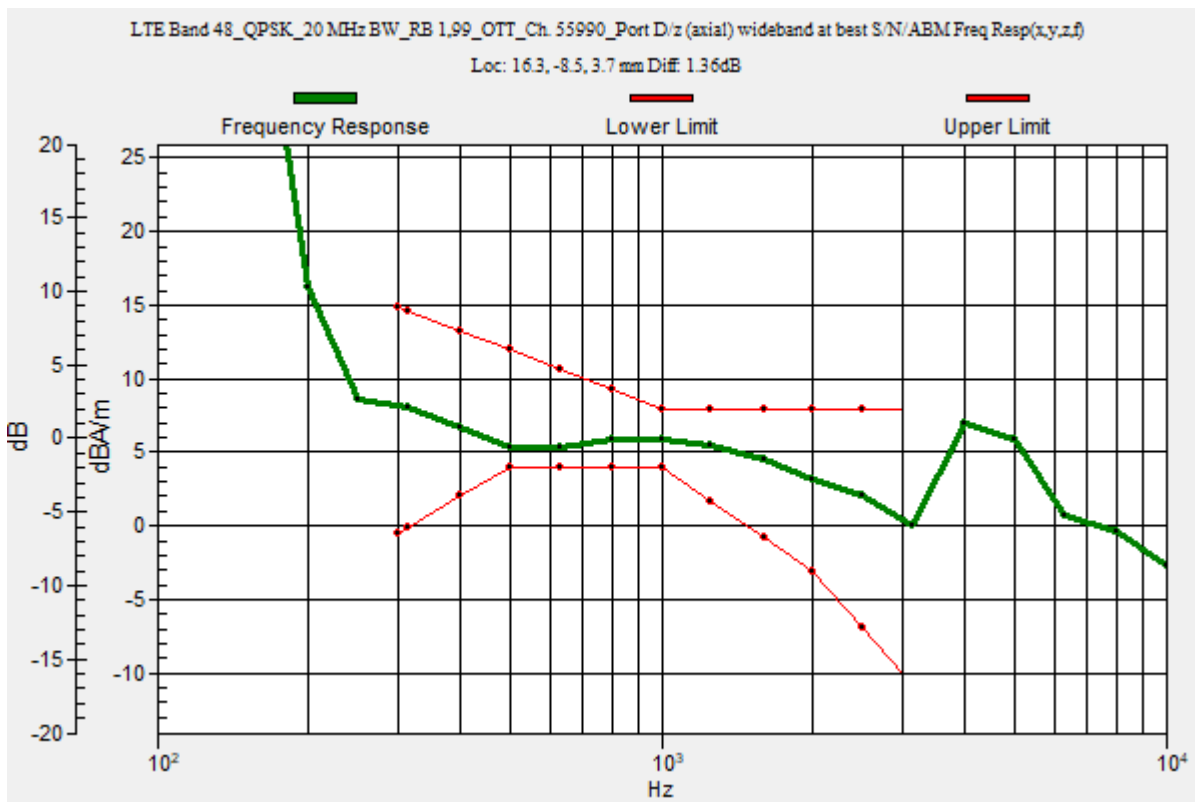
Category	Telephone parameters WD signal quality [(signal+noise)-to-noise ratio in decibels]
Category T1	0 dB to 10 dB
Category T2	10 dB to 20 dB
Category T3	20 dB to 30 dB
Category T4	> 30 dB

**Cursor:**

Diff = 1.36 dB

BWC Factor = 10.80 dB

Location: 16.3, -8.5, 3.7 mm



## LTE Band 48

Communication System: UID 0, 1@LTE (TDD) (0); Frequency: 3625 MHz; Duty Cycle: 1:1.59956

Phantom section: TCoil Section

DASY5 Configuration:

- Probe: AM1DV3 - 3083; ; Calibrated: 1/10/2022
- Sensor-Surface: 0mm (Fix Surface)
- Electronics: DAE4 Sn1357; Calibrated: 1/11/2022
- Phantom: HAC Test Arch with AMCC; Type: SD HAC P01 BB
- Measurement SW: DASY52, Version 52.10 (4);SEMCAD X Version 14.6.14 (7483)

### T-Coil scan (scan for ANSI C63.19 2011 compliance)/LTE Band 48\_QPSK\_20 MHz BW\_RB 1,99\_OTT\_Ch. 55990\_Port D/z (axial) 4.2mm 50x50/ABM Interpolated SNR(x,y,z)

(121x121x1): Interpolated grid: dx=1.000 mm, dy=1.000 mm

Signal Type: Audio File (.wav) 48k\_voice\_1kHz\_1s.wav

Output Gain: 37.14

Measure Window Start: 300ms

Measure Window Length: 1000ms

BWC applied: 0.16 dB

Device Reference Point: 0, 0, -6.3 mm

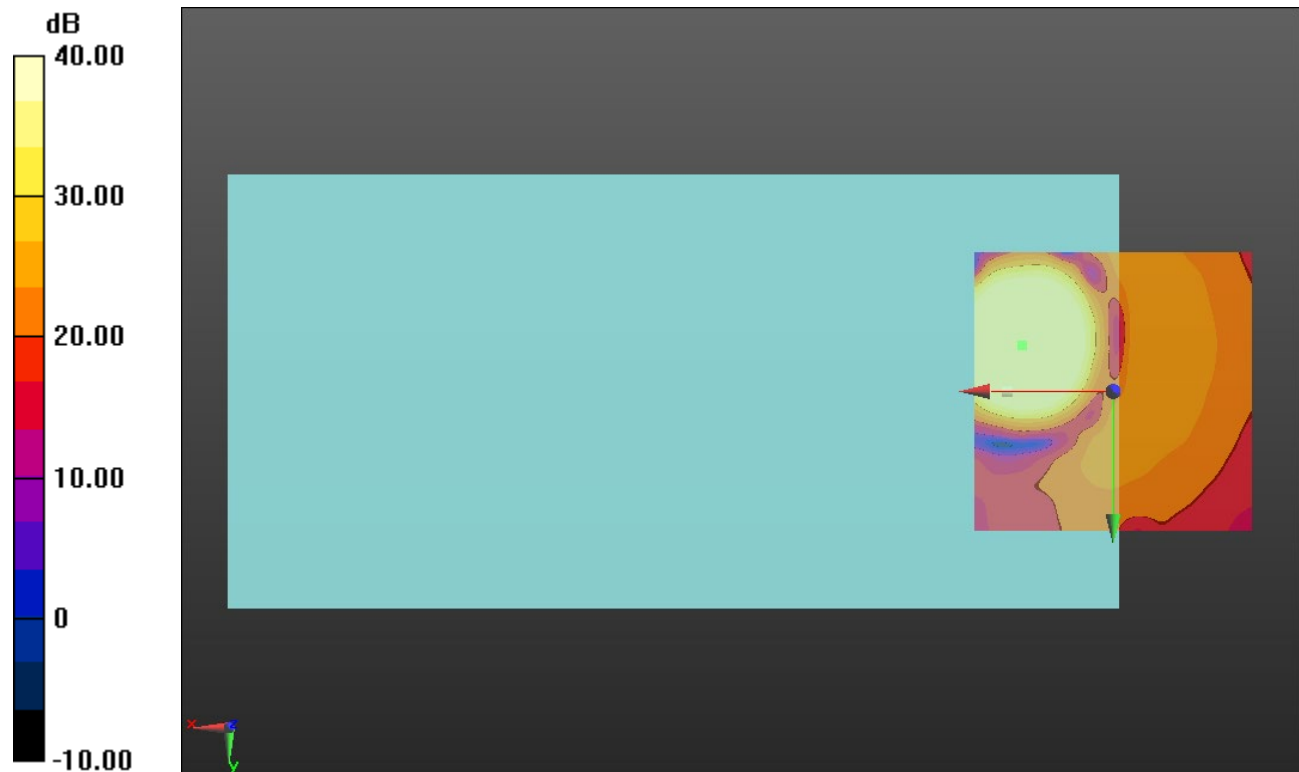
#### Cursor:

ABM1/ABM2 = 53.87 dB

ABM1 comp = 5.87 dBA/m

BWC Factor = 0.16 dB

Location: 16.3, -8.3, 3.7 mm



0 dB = 1.000 = 0.00 dB

### LTE Band 66

Communication System: UID 0, 1@LTE (FDD) (0); Frequency: 1745 MHz;Duty Cycle: 1:1

### T-Coil scan (scan for ANSI C63.19 2011 compliance)/LTE Band 66\_64QAM\_20 MHz BW\_RB 100,0\_OTT\_Ch. 132322\_Port C/y (transversal) wideband at best S/N/ABM Freq

Resp(x,y,z,f) (1x1x1): Measurement grid: dx=10mm, dy=10mm

Signal Type: Audio File (.wav) 48k\_voice\_300-3000\_2s.wav

Output Gain: 72.83

Measure Window Start: 300ms

Measure Window Length: 2000ms

BWC applied: 10.80 dB

Device Reference Point: 0, 0, -6.3 mm

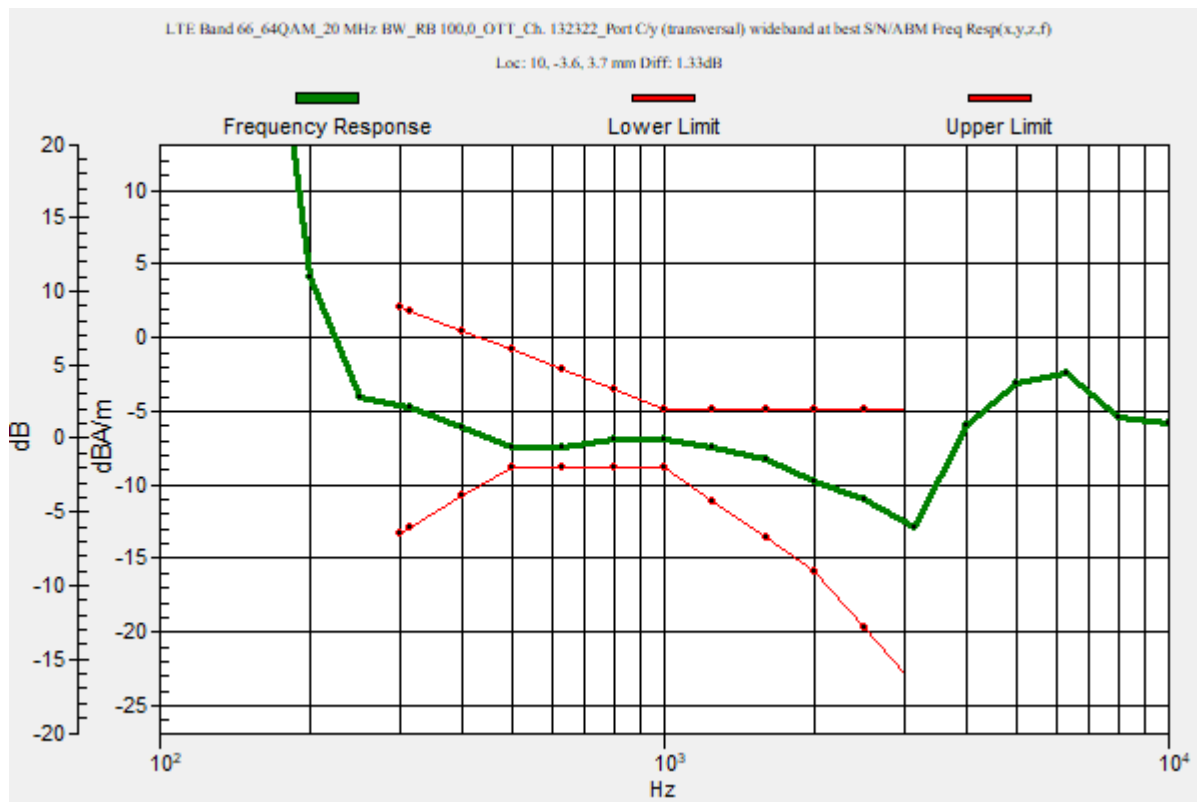
Category	Telephone parameters WD signal quality [(signal+noise)-to-noise ratio in decibels]
Category T1	0 dB to 10 dB
Category T2	10 dB to 20 dB
Category T3	20 dB to 30 dB
Category T4	> 30 dB

**Cursor:**

Diff = 1.33 dB

BWC Factor = 10.80 dB

Location: 10, -3.6, 3.7 mm



### LTE Band 66

Communication System: UID 0, 1@LTE (FDD) (0); Frequency: 1745 MHz; Duty Cycle: 1:1

Phantom section: TCoil Section

DASY5 Configuration:

- Probe: AM1DV3 - 3083; ; Calibrated: 1/10/2022
- Sensor-Surface: 0mm (Fix Surface)
- Electronics: DAE4 Sn1357; Calibrated: 1/11/2022
- Phantom: HAC Test Arch with AMCC; Type: SD HAC P01 BB
- Measurement SW: DASY52, Version 52.10 (4);SEMCAD X Version 14.6.14 (7483)

### T-Coil scan (scan for ANSI C63.19 2011 compliance)/LTE Band 66\_64QAM\_20 MHz BW\_RB 100,0\_OTT\_Ch. 132322\_Port C/y (transversal) 4.2mm 50 x 50/ABM Interpolated SNR(x,y,z) (121x121x1): Interpolated grid: dx=1.000 mm, dy=1.000 mm

Signal Type: Audio File (.wav) 48k\_voice\_1kHz\_1s.wav

Output Gain: 37.14

Measure Window Start: 300ms

Measure Window Length: 1000ms

BWC applied: 0.16 dB

Device Reference Point: 0, 0, -6.3 mm

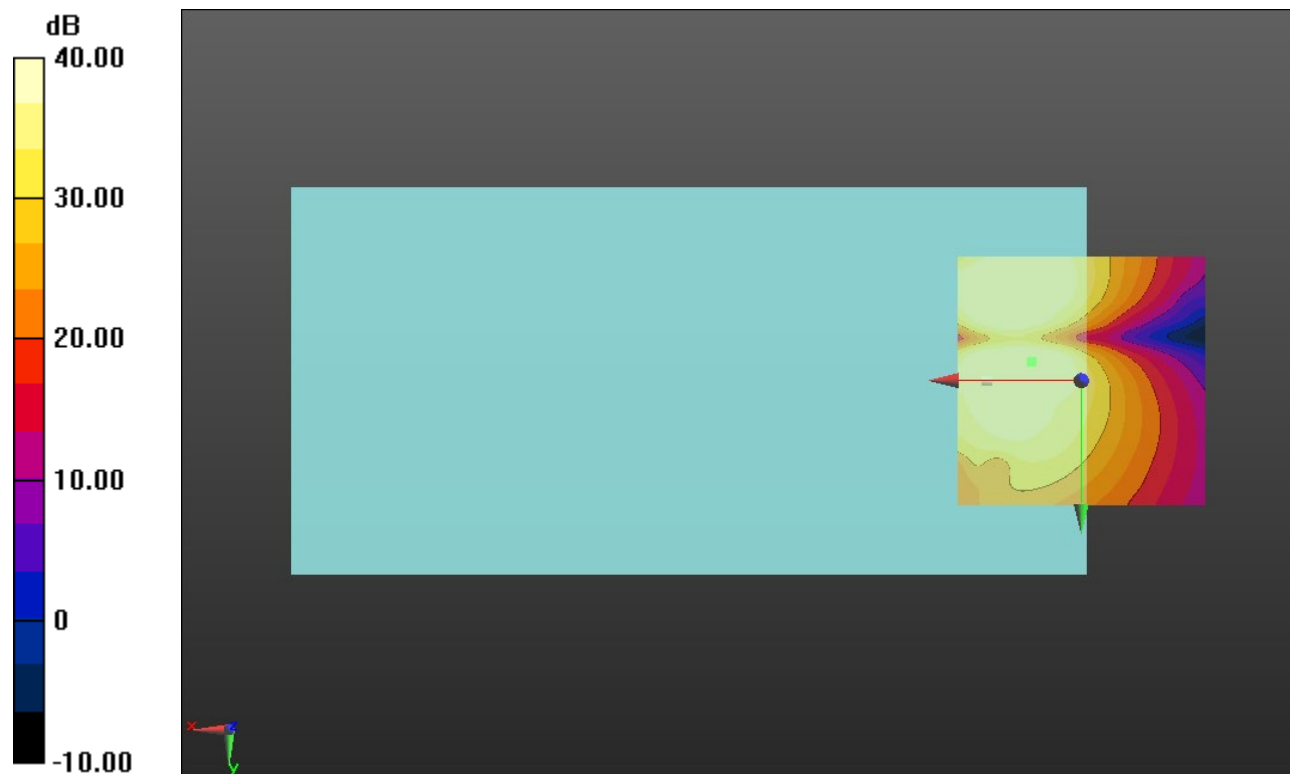
#### Cursor:

ABM1/ABM2 = 42.37 dB

ABM1 comp = -7.03 dBA/m

BWC Factor = 0.16 dB

Location: 10, -3.8, 3.7 mm



0 dB = 1.000 = 0.00 dB

### Wi-Fi 2.4GHz

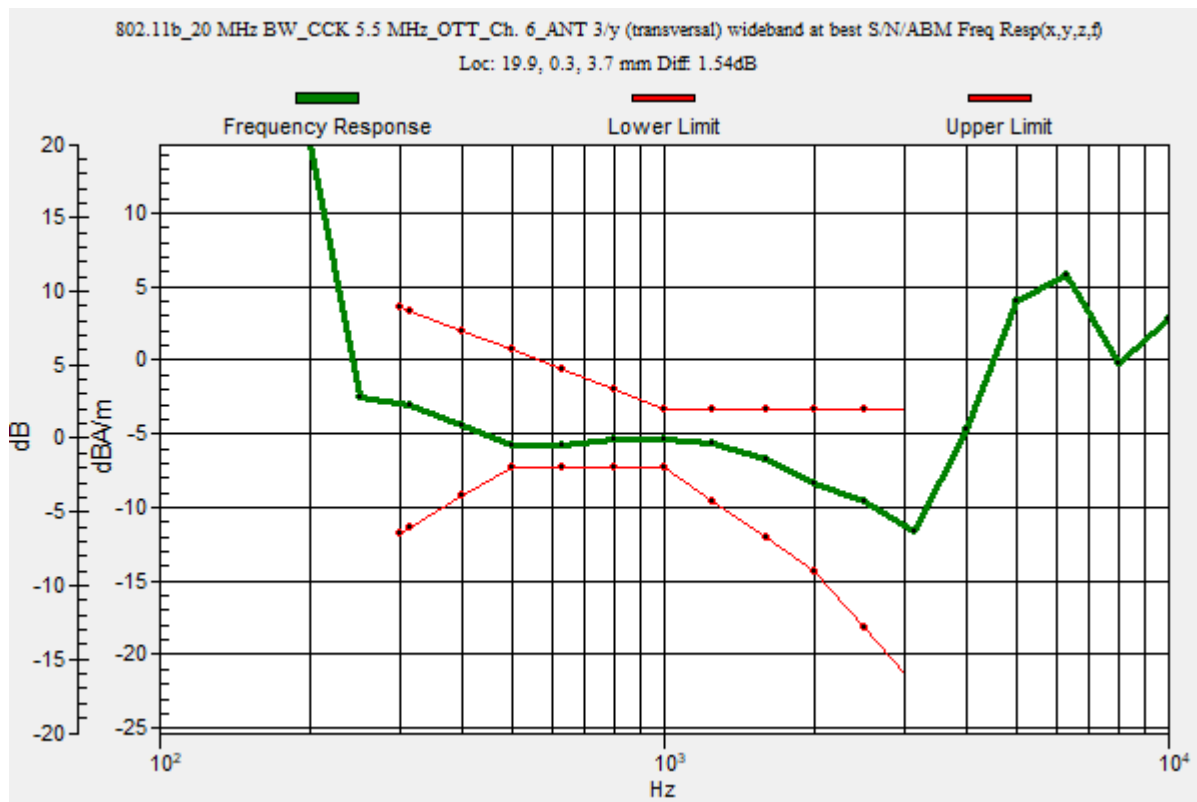
Communication System: UID 0, 1@IEEE 802.11b/g/n/ac/ax 2.4 GHz Band (0); Frequency: 2437 MHz;Duty Cycle: 1:1

### T-Coil scan (scan for ANSI C63.19 2011 compliance)/802.11b\_20 MHz BW\_CCK 5.5 MHz\_OTT\_Ch. 6\_ANT 3/y (transversal) wideband at best S/N/ABM Freq Resp(x,y,z,f)

**(1x1x1):** Measurement grid: dx=10mm, dy=10mm  
 Signal Type: Audio File (.wav) 48k\_voice\_300-3000\_2s.wav  
 Output Gain: 72.83  
 Measure Window Start: 300ms  
 Measure Window Length: 2000ms  
 BWC applied: 10.80 dB  
 Device Reference Point: 0, 0, -6.3 mm

Category	Telephone parameters WD signal quality [(signal+noise)-to-noise ratio in decibels]
Category T1	0 dB to 10 dB
Category T2	10 dB to 20 dB
Category T3	20 dB to 30 dB
Category T4	> 30 dB

**Cursor:**  
 Diff = 1.54 dB  
 BWC Factor = 10.80 dB  
 Location: 19.9, 0.3, 3.7 mm



## Wi-Fi 2.4GHz

Communication System: UID 0, 1@IEEE 802.11b/g/n/ac/ax 2.4 GHz Band (0); Frequency: 2437 MHz; Duty Cycle: 1:1

Phantom section: TCoil Section

DASY5 Configuration:

- Probe: AM1DV3 - 3083; ; Calibrated: 1/10/2022
- Sensor-Surface: 0mm (Fix Surface)
- Electronics: DAE4 Sn1357; Calibrated: 1/11/2022
- Phantom: HAC Test Arch with AMCC; Type: SD HAC P01 BB
- Measurement SW: DASY52, Version 52.10 (4);SEMCAD X Version 14.6.14 (7483)

**T-Coil scan (scan for ANSI C63.19 2011 compliance)/802.11b\_20 MHz BW\_CCK 5.5 MHz\_OTT\_Ch. 6\_ANT 3/y (transversal) 4.2mm 50 x 50/ABM Interpolated SNR(x,y,z) (121x121x1):** Interpolated grid: dx=1.000 mm, dy=1.000 mm

Signal Type: Audio File (.wav) 48k\_voice\_1kHz\_1s.wav

Output Gain: 37.14

Measure Window Start: 300ms

Measure Window Length: 1000ms

BWC applied: 0.16 dB

Device Reference Point: 0, 0, -6.3 mm

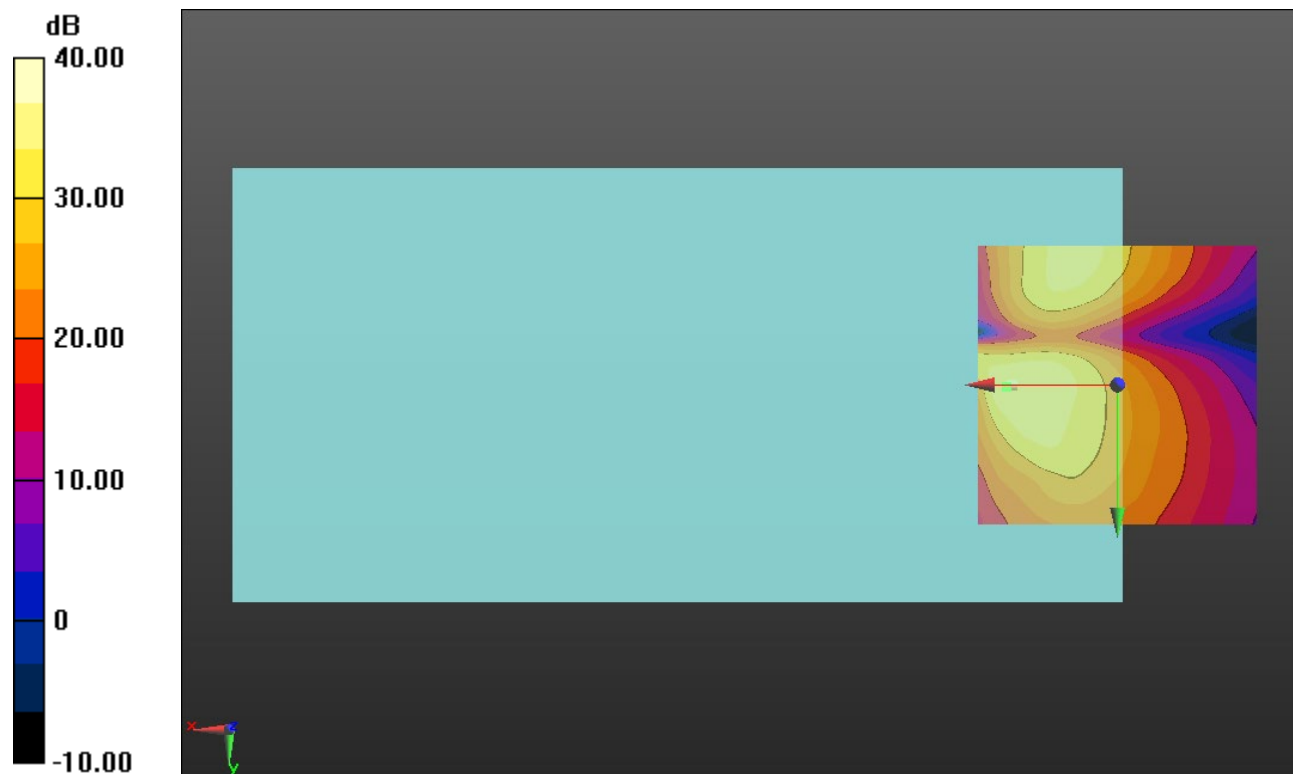
### Cursor:

ABM1/ABM2 = 36.76 dB

ABM1 comp = -5.37 dBA/m

BWC Factor = 0.16 dB

Location: 20, 0.4, 3.7 mm



0 dB = 1.000 = 0.00 dB

### Wi-Fi 5GHz

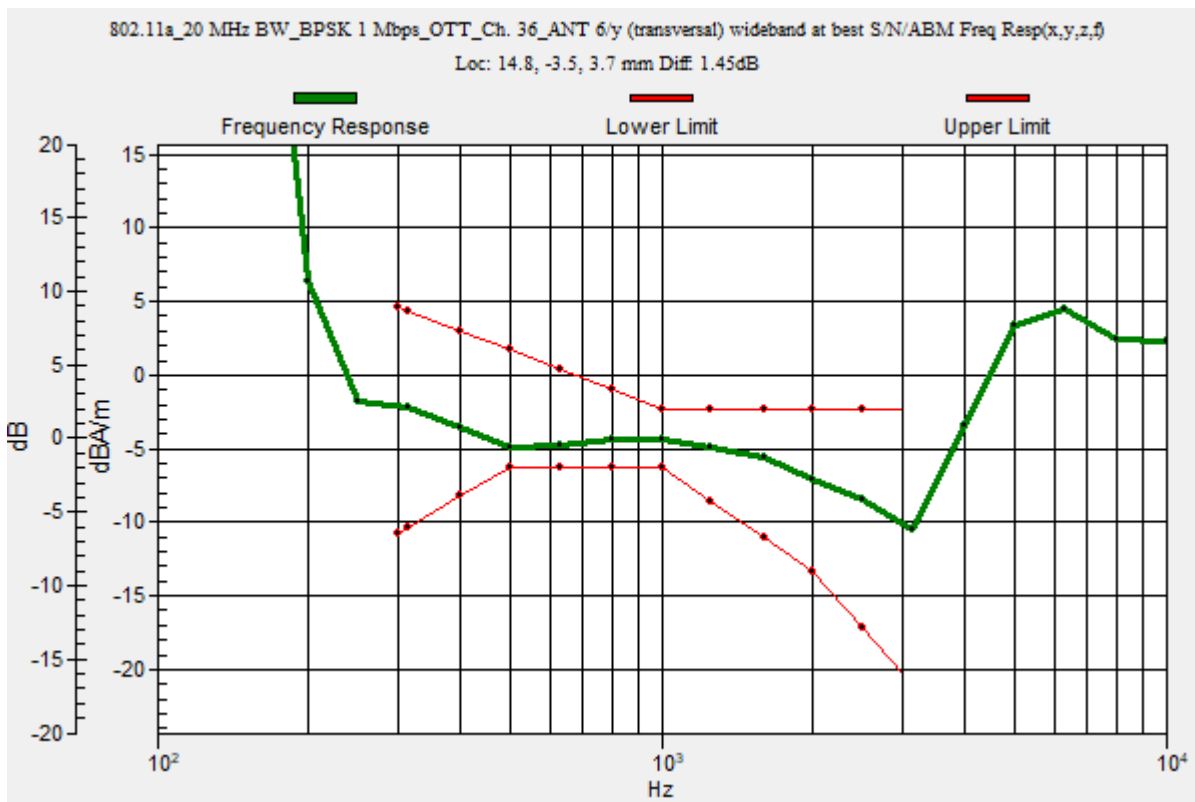
Communication System: UID 0, 1@IEEE 802.11a/n/ac/ax 5 GHz Band (0); Frequency: 5180 MHz;Duty Cycle: 1:1

### T-Coil scan (scan for ANSI C63.19 2011 compliance)/802.11a\_20 MHz BW\_BPSK 1 Mbps\_OTT\_Ch. 36\_ANT 6/y (transversal) wideband at best S/N/ABM Freq Resp(x,y,z,f)

(1x1x1): Measurement grid: dx=10mm, dy=10mm  
 Signal Type: Audio File (.wav) 48k\_voice\_300-3000\_2s.wav  
 Output Gain: 72.83  
 Measure Window Start: 300ms  
 Measure Window Length: 2000ms  
 BWC applied: 10.80 dB  
 Device Reference Point: 0, 0, -6.3 mm

Category	Telephone parameters WD signal quality [(signal+noise)-to-noise ratio in decibels]
Category T1	0 dB to 10 dB
Category T2	10 dB to 20 dB
Category T3	20 dB to 30 dB
Category T4	> 30 dB

**Cursor:**  
 Diff = 1.45 dB  
 BWC Factor = 10.80 dB  
 Location: 14.8, -3.5, 3.7 mm



### Wi-Fi 5GHz

Communication System: UID 0, 1@IEEE 802.11a/n/ac/ax 5 GHz Band (0); Frequency: 5180 MHz; Duty Cycle: 1:1

Phantom section: TCoil Section

DASY5 Configuration:

- Probe: AM1DV3 - 3083; ; Calibrated: 1/10/2022
- Sensor-Surface: 0mm (Fix Surface)
- Electronics: DAE4 Sn1357; Calibrated: 1/11/2022
- Phantom: HAC Test Arch with AMCC; Type: SD HAC P01 BB
- Measurement SW: DASY52, Version 52.10 (4);SEMCAD X Version 14.6.14 (7483)

### T-Coil scan (scan for ANSI C63.19 2011 compliance)/802.11a\_20 MHz BW\_BPSK 1 Mbps\_OTT\_Ch. 36\_ANT 6/y (transversal) 4.2mm 50 x 50/ABM Interpolated SNR(x,y,z) (121x121x1):

Interpolated grid: dx=1.000 mm, dy=1.000 mm

Signal Type: Audio File (.wav) 48k\_voice\_1kHz\_1s.wav

Output Gain: 37.14

Measure Window Start: 300ms

Measure Window Length: 1000ms

BWC applied: 0.16 dB

Device Reference Point: 0, 0, -6.3 mm

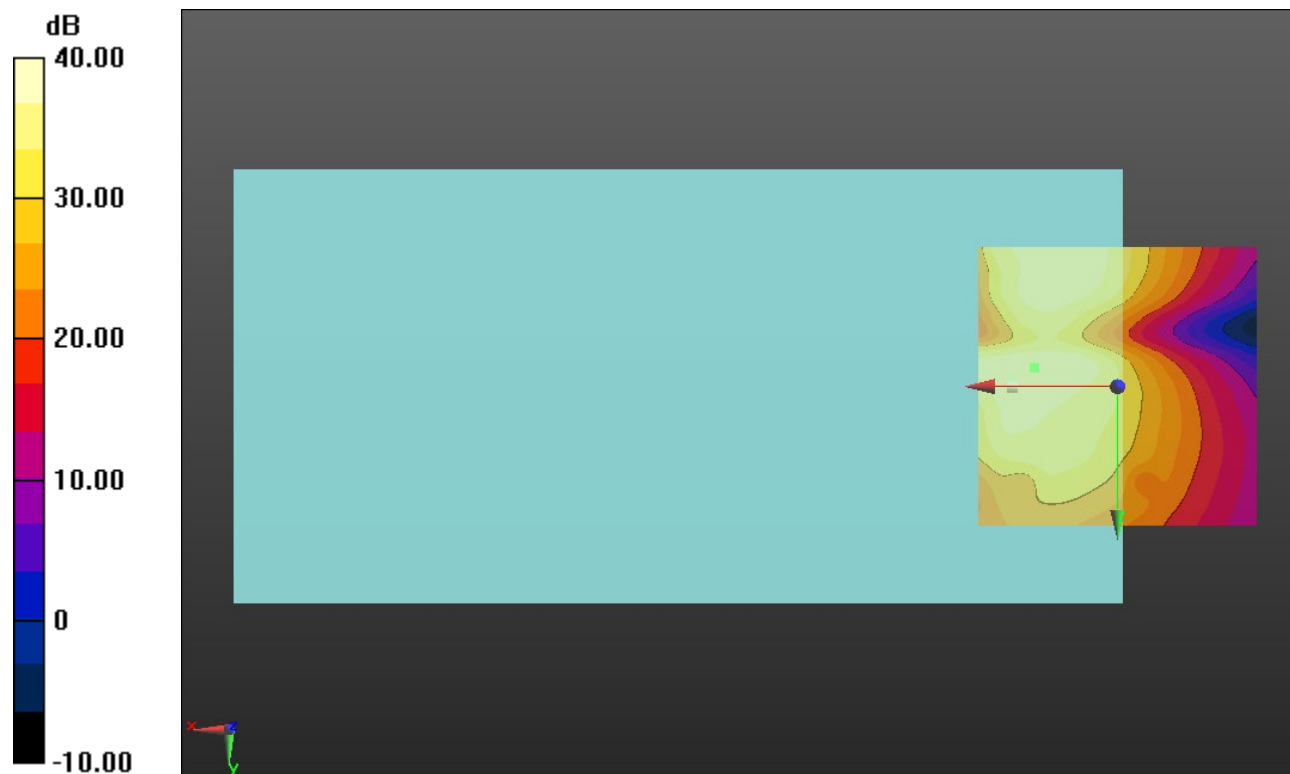
#### Cursor:

ABM1/ABM2 = 39.44 dB

ABM1 comp = -4.30 dBA/m

BWC Factor = 0.16 dB

Location: 15, -3.3, 3.7 mm



0 dB = 1.000 = 0.00 dB



### Wi-Fi 5GHz

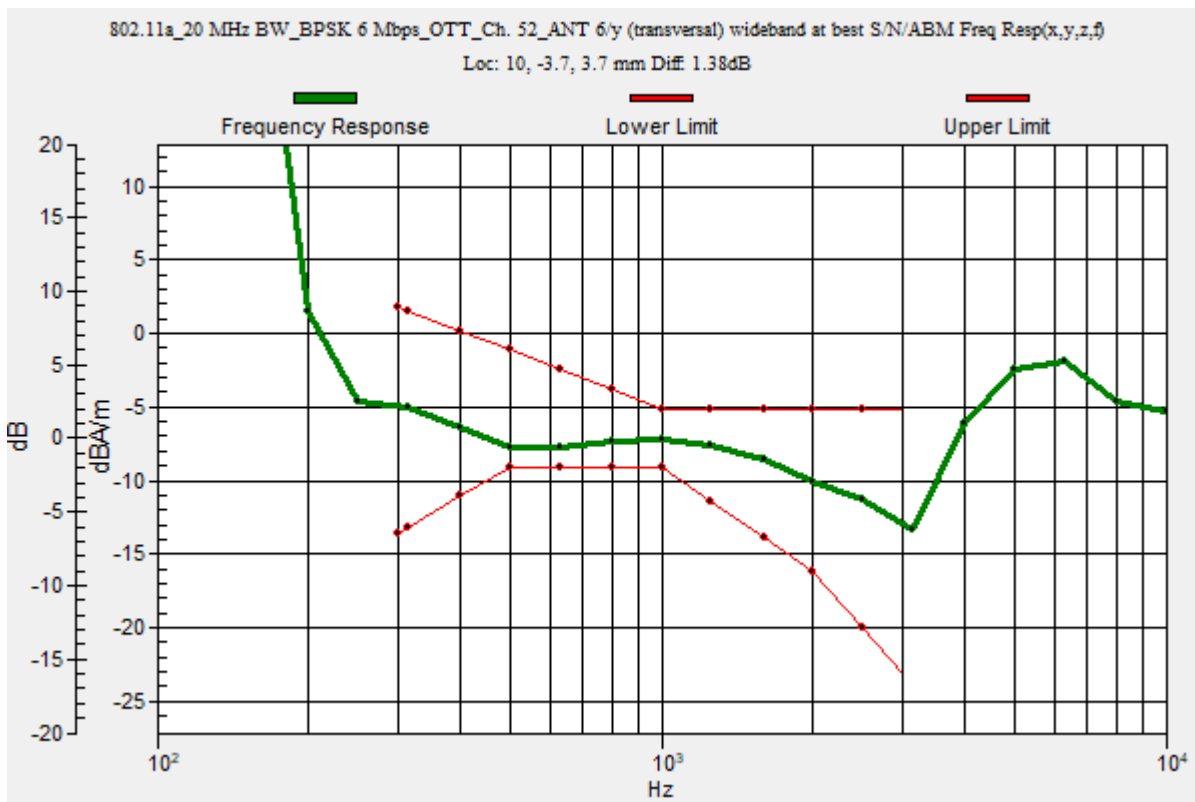
Communication System: UID 0, 1@IEEE 802.11a/n/ac/ax 5 GHz Band (0); Frequency: 5260 MHz;Duty Cycle: 1:1

### T-Coil scan (scan for ANSI C63.19 2011 compliance)/802.11a\_20 MHz BW\_BPSK 6 Mbps\_OTT\_Ch. 52\_ANT 6/y (transversal) wideband at best S/N/ABM Freq Resp(x,y,z,f)

(1x1x1): Measurement grid: dx=10mm, dy=10mm  
 Signal Type: Audio File (.wav) 48k\_voice\_300-3000\_2s.wav  
 Output Gain: 72.83  
 Measure Window Start: 300ms  
 Measure Window Length: 2000ms  
 BWC applied: 10.80 dB  
 Device Reference Point: 0, 0, -6.3 mm

Category	Telephone parameters WD signal quality [(signal+noise)-to-noise ratio in decibels]
Category T1	0 dB to 10 dB
Category T2	10 dB to 20 dB
Category T3	20 dB to 30 dB
Category T4	> 30 dB

**Cursor:**  
 Diff = 1.38 dB  
 BWC Factor = 10.80 dB  
 Location: 10, -3.7, 3.7 mm



### Wi-Fi 5GHz

Communication System: UID 0, 1@IEEE 802.11a/n/ac/ax 5 GHz Band (0); Frequency: 5260 MHz; Duty Cycle: 1:1

Phantom section: TCoil Section

DASY5 Configuration:

- Probe: AM1DV3 - 3083; ; Calibrated: 1/10/2022
- Sensor-Surface: 0mm (Fix Surface)
- Electronics: DAE4 Sn1357; Calibrated: 1/11/2022
- Phantom: HAC Test Arch with AMCC; Type: SD HAC P01 BB
- Measurement SW: DASY52, Version 52.10 (4);SEMCAD X Version 14.6.14 (7483)

### T-Coil scan (scan for ANSI C63.19 2011 compliance)/802.11a\_20 MHz BW\_BPSK 6 Mbps\_OTT\_Ch. 52\_ANT 6/y (transversal) 4.2mm 50 x 50/ABM Interpolated SNR(x,y,z) (121x121x1):

Interpolated grid: dx=1.000 mm, dy=1.000 mm

Signal Type: Audio File (.wav) 48k\_voice\_1kHz\_1s.wav

Output Gain: 37.14

Measure Window Start: 300ms

Measure Window Length: 1000ms

BWC applied: 0.16 dB

Device Reference Point: 0, 0, -6.3 mm

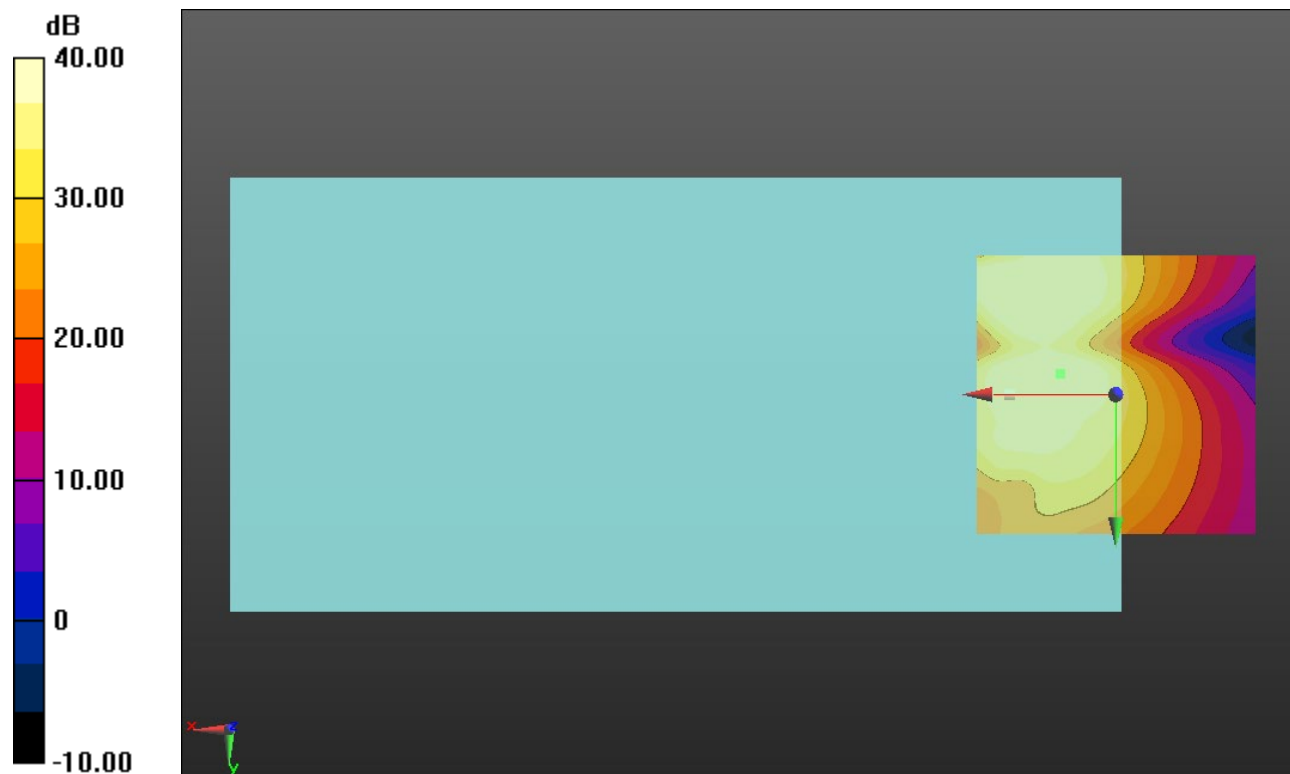
#### Cursor:

ABM1/ABM2 = 41.79 dB

ABM1 comp = -7.13 dBA/m

BWC Factor = 0.16 dB

Location: 10, -3.8, 3.7 mm



0 dB = 1.000 = 0.00 dB

### Wi-Fi 5GHz

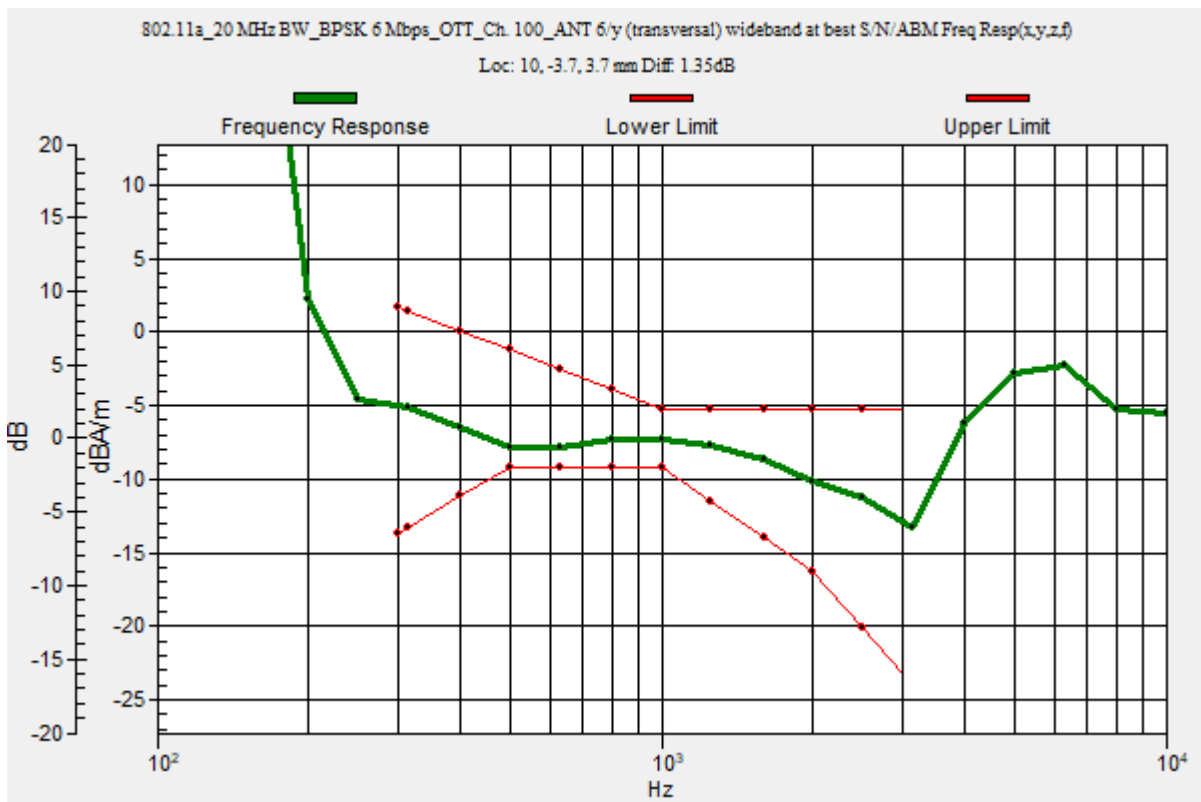
Communication System: UID 0, 1@IEEE 802.11a/n/ac/ax 5 GHz Band (0); Frequency: 5500 MHz;Duty Cycle: 1:1

### T-Coil scan (scan for ANSI C63.19 2011 compliance)/802.11a\_20 MHz BW\_BPSK 6 Mbps\_OTT\_Ch. 100\_ANT 6/y (transversal) wideband at best S/N/ABM Freq Resp(x,y,z,f)

**(1x1x1):** Measurement grid: dx=10mm, dy=10mm  
 Signal Type: Audio File (.wav) 48k\_voice\_300-3000\_2s.wav  
 Output Gain: 72.83  
 Measure Window Start: 300ms  
 Measure Window Length: 2000ms  
 BWC applied: 10.80 dB  
 Device Reference Point: 0, 0, -6.3 mm

Category	Telephone parameters WD signal quality [(signal+noise)-to-noise ratio in decibels]
Category T1	0 dB to 10 dB
Category T2	10 dB to 20 dB
Category T3	20 dB to 30 dB
Category T4	> 30 dB

**Cursor:**  
 Diff = 1.35 dB  
 BWC Factor = 10.80 dB  
 Location: 10, -3.7, 3.7 mm



### Wi-Fi 5GHz

Communication System: UID 0, 1@IEEE 802.11a/n/ac/ax 5 GHz Band (0); Frequency: 5500 MHz; Duty Cycle: 1:1

Phantom section: TCoil Section

DASY5 Configuration:

- Probe: AM1DV3 - 3083; ; Calibrated: 1/10/2022
- Sensor-Surface: 0mm (Fix Surface)
- Electronics: DAE4 Sn1357; Calibrated: 1/11/2022
- Phantom: HAC Test Arch with AMCC; Type: SD HAC P01 BB
- Measurement SW: DASY52, Version 52.10 (4);SEMCAD X Version 14.6.14 (7483)

### T-Coil scan (scan for ANSI C63.19 2011 compliance)/802.11a\_20 MHz BW\_BPSK 6 Mbps\_OTT\_Ch. 100\_ANT 6/y (transversal) Single Point/ABM SNR(x,y,z) (1x1x1):

Measurement grid: dx=10mm, dy=10mm

Signal Type: Audio File (.wav) 48k\_voice\_1kHz\_1s.wav

Output Gain: 37.14

Measure Window Start: 300ms

Measure Window Length: 1000ms

BWC applied: 0.16 dB

Device Reference Point: 0, 0, -6.3 mm

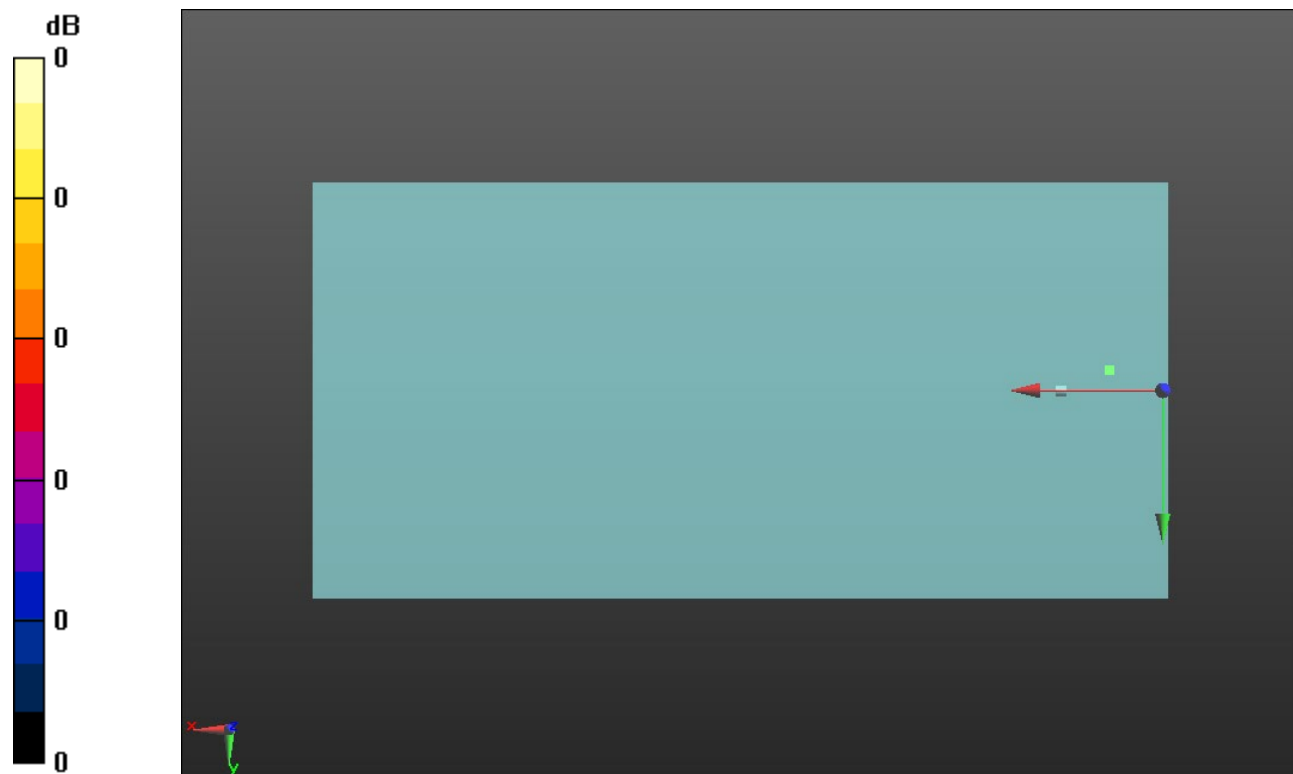
#### Cursor:

ABM1/ABM2 = 41.64 dB

ABM1 comp = -7.20 dBA/m

BWC Factor = 0.16 dB

Location: 10, -3.7, 3.7 mm



0 dB = 1.000 = 0.00 dB

### Wi-Fi 5GHz

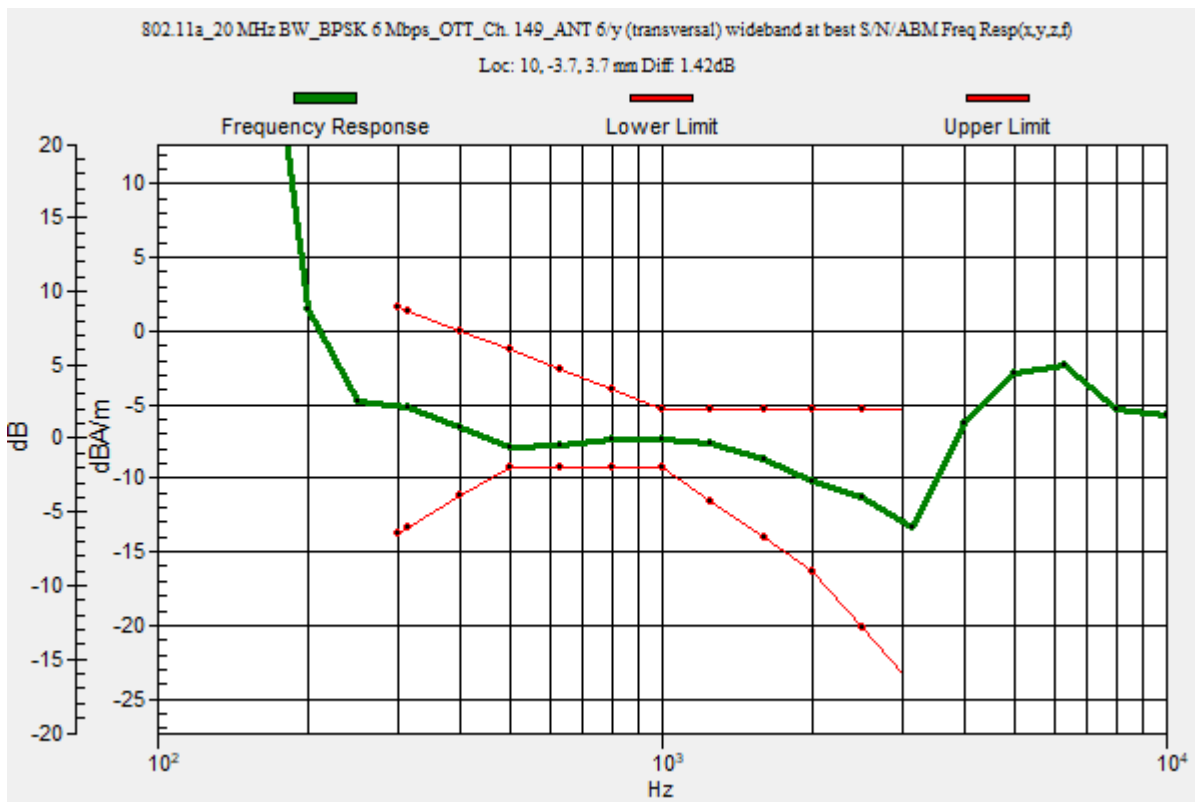
Communication System: UID 0, 1@IEEE 802.11a/n/ac/ax 5 GHz Band (0); Frequency: 5745 MHz;Duty Cycle: 1:1

### T-Coil scan (scan for ANSI C63.19 2011 compliance)/802.11a\_20 MHz BW\_BPSK 6 Mbps\_OTT\_Ch. 149\_ANT 6/y (transversal) wideband at best S/N/ABM Freq Resp(x,y,z,f)

(1x1x1): Measurement grid: dx=10mm, dy=10mm  
 Signal Type: Audio File (.wav) 48k\_voice\_300-3000\_2s.wav  
 Output Gain: 72.83  
 Measure Window Start: 300ms  
 Measure Window Length: 2000ms  
 BWC applied: 10.80 dB  
 Device Reference Point: 0, 0, -6.3 mm

Category	Telephone parameters WD signal quality [(signal+noise)-to-noise ratio in decibels]
Category T1	0 dB to 10 dB
Category T2	10 dB to 20 dB
Category T3	20 dB to 30 dB
Category T4	> 30 dB

**Cursor:**  
 Diff = 1.42 dB  
 BWC Factor = 10.80 dB  
 Location: 10, -3.7, 3.7 mm



### Wi-Fi 5GHz

Communication System: UID 0, 1@IEEE 802.11a/n/ac/ax 5 GHz Band (0); Frequency: 5745 MHz; Duty Cycle: 1:1

Phantom section: TCoil Section

DASY5 Configuration:

- Probe: AM1DV3 - 3083; ; Calibrated: 1/10/2022
- Sensor-Surface: 0mm (Fix Surface)
- Electronics: DAE4 Sn1357; Calibrated: 1/11/2022
- Phantom: HAC Test Arch with AMCC; Type: SD HAC P01 BB
- Measurement SW: DASY52, Version 52.10 (4);SEMCAD X Version 14.6.14 (7483)

### T-Coil scan (scan for ANSI C63.19 2011 compliance)/802.11a\_20 MHz BW\_BPSK 6 Mbps\_OTT\_Ch. 149\_ANT 6/y (transversal) Single Point/ABM SNR(x,y,z) (1x1x1):

Measurement grid: dx=10mm, dy=10mm

Signal Type: Audio File (.wav) 48k\_voice\_1kHz\_1s.wav

Output Gain: 37.14

Measure Window Start: 300ms

Measure Window Length: 1000ms

BWC applied: 0.16 dB

Device Reference Point: 0, 0, -6.3 mm

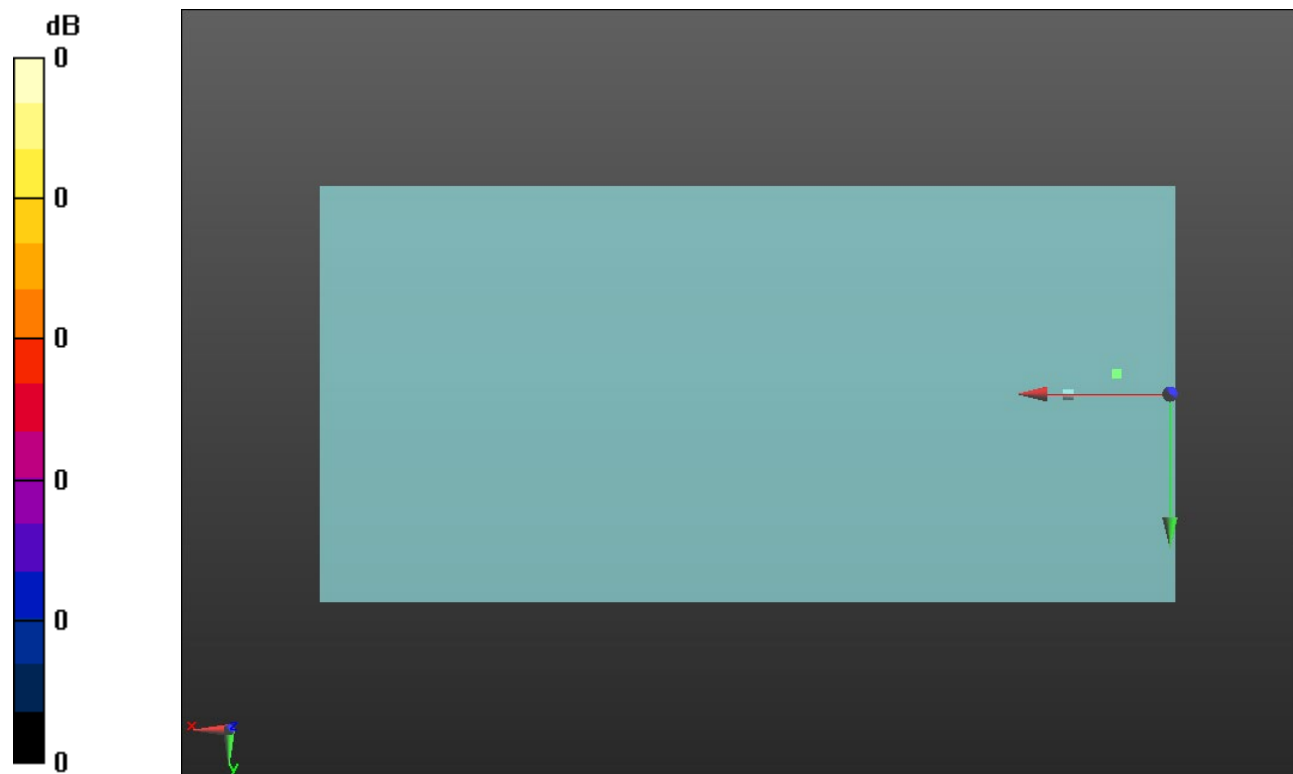
#### Cursor:

ABM1/ABM2 = 41.67 dB

ABM1 comp = -7.24 dBA/m

BWC Factor = 0.16 dB

Location: 10, -3.7, 3.7 mm



0 dB = 1.000 = 0.00 dB