

**A2651 - Front**

Multi-Touch Panel, Display, Earpiece Receiver  
Face-time Camera



**A2651 - Back**

Rear Camera, Microphone, Flash Light

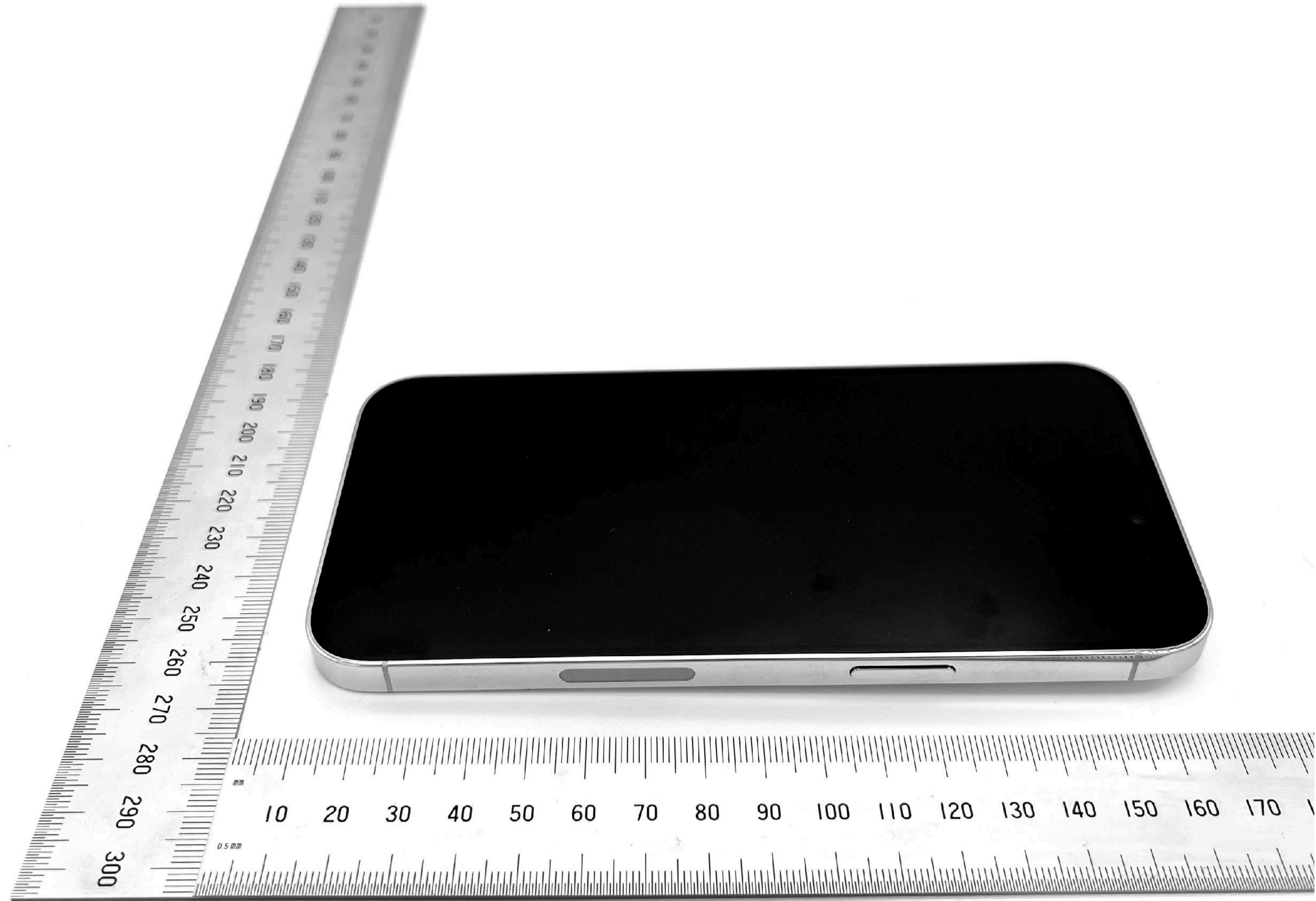


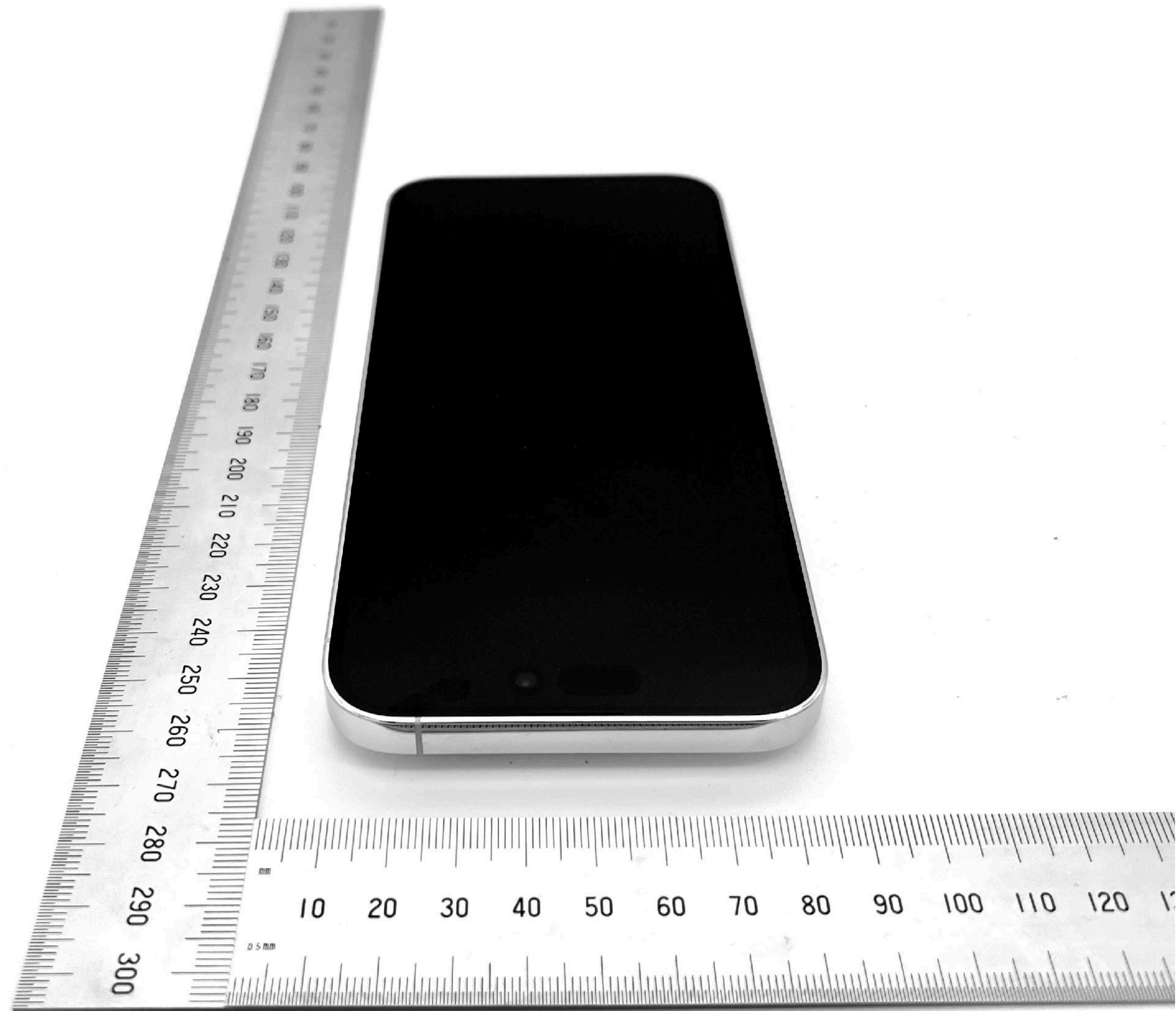
**A2651 - Bottom**

Speakers, I/O Dock Connector, Microphone



**A2651 - Right**  
Sleep/Wake Button





**A2651 - Left**

Ring/Silent Switch, Volume Buttons

