

### GSM 850

Communication System: UID 0, 1@GPRS-FDD (TDMA, GMSK, 1 slot) (0); Frequency: 836.6 MHz;Duty Cycle: 1:8.00018

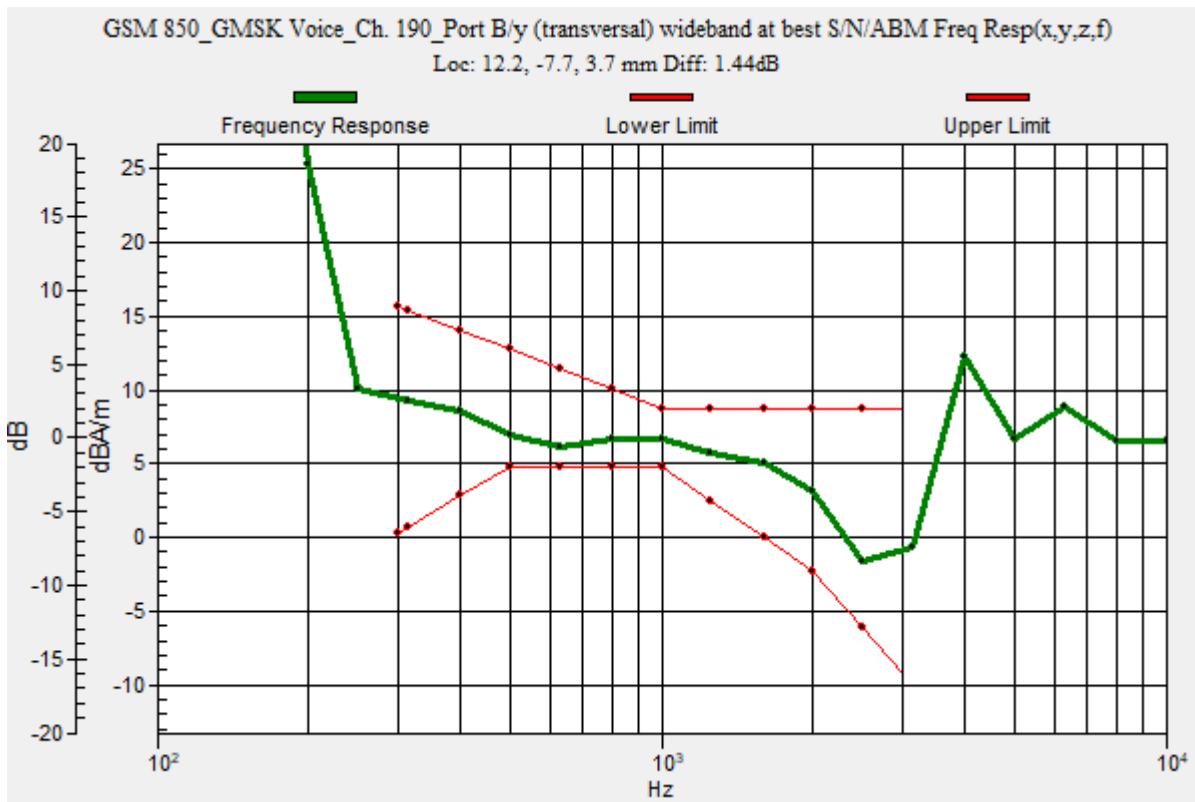
### T-Coil scan (scan for ANSI C63.19 2011 compliance)/GSM 850\_GMSK Voice\_Ch. 190\_Port B/y (transversal) wideband at best S/N/ABM Freq Resp(x,y,z,f) (1x1x1):

Measurement grid: dx=10mm, dy=10mm  
 Signal Type: Audio File (.wav) 48k\_voice\_300-3000\_2s.wav  
 Output Gain: 47.1  
 Measure Window Start: 300ms  
 Measure Window Length: 2000ms  
 BWC applied: 10.80 dB  
 Device Reference Point: 0, 0, -6.3 mm

Category	Telephone parameters WD signal quality [(signal+noise)-to-noise ratio in decibels]
Category T1	0 dB to 10 dB
Category T2	10 dB to 20 dB
Category T3	20 dB to 30 dB
Category T4	> 30 dB

**Cursor:**

Diff = 1.44 dB  
 BWC Factor = 10.80 dB  
 Location: 12.2, -7.7, 3.7 mm



### GSM 850

Communication System: UID 0, 1@GPRS-FDD (TDMA, GMSK, 1 slot) (0); Frequency: 836.6 MHz; Duty Cycle: 1:8.00018

Phantom section: TCoil Section

DASY5 Configuration:

- Probe: AM1DV3 - 3083; ; Calibrated: 1/10/2022
- Sensor-Surface: 0mm (Fix Surface)
- Electronics: DAE4 Sn1357; Calibrated: 1/11/2022
- Phantom: HAC Test Arch with AMCC; Type: SD HAC P01 BB
- Measurement SW: DASY52, Version 52.10 (4);SEMCAD X Version 14.6.14 (7483)

### T-Coil scan (scan for ANSI C63.19 2011 compliance)/GSM 850\_GMSK Voice\_Ch. 190\_Port B/y (transversal) 4.2mm 50 x 50/ABM Interpolated SNR(x,y,z) (121x121x1):

Interpolated grid: dx=1.000 mm, dy=1.000 mm

Signal Type: Audio File (.wav) 48k\_voice\_1kHz\_1s.wav

Output Gain: 24.02

Measure Window Start: 300ms

Measure Window Length: 1000ms

BWC applied: 0.16 dB

Device Reference Point: 0, 0, -6.3 mm

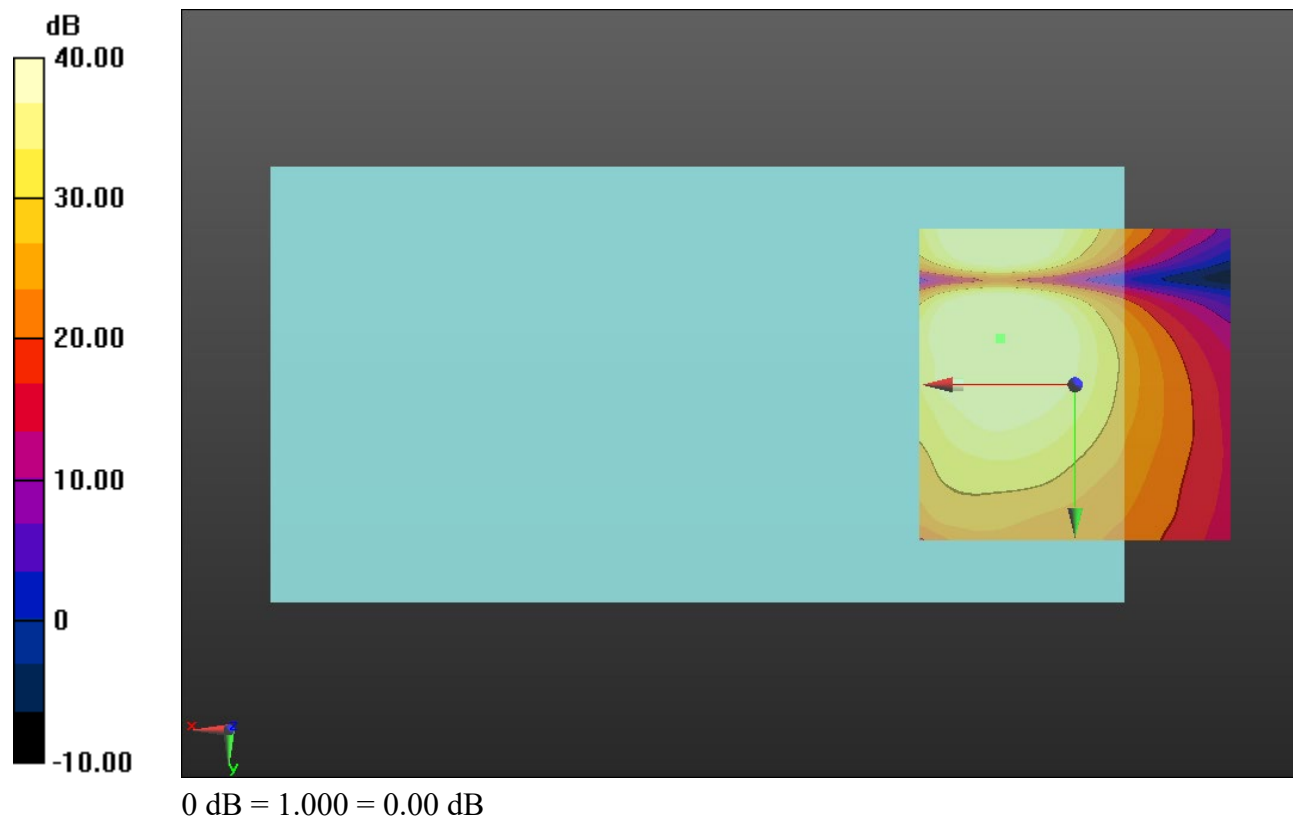
#### Cursor:

ABM1/ABM2 = 45.83 dB

ABM1 comp = 5.52 dBA/m

BWC Factor = 0.16 dB

Location: 12.1, -7.5, 3.7 mm



### GSM 1900

Communication System: UID 0, 1@GPRS-FDD (TDMA, GMSK, 1 slot) (0); Frequency: 1880 MHz;Duty Cycle: 1:8.00018

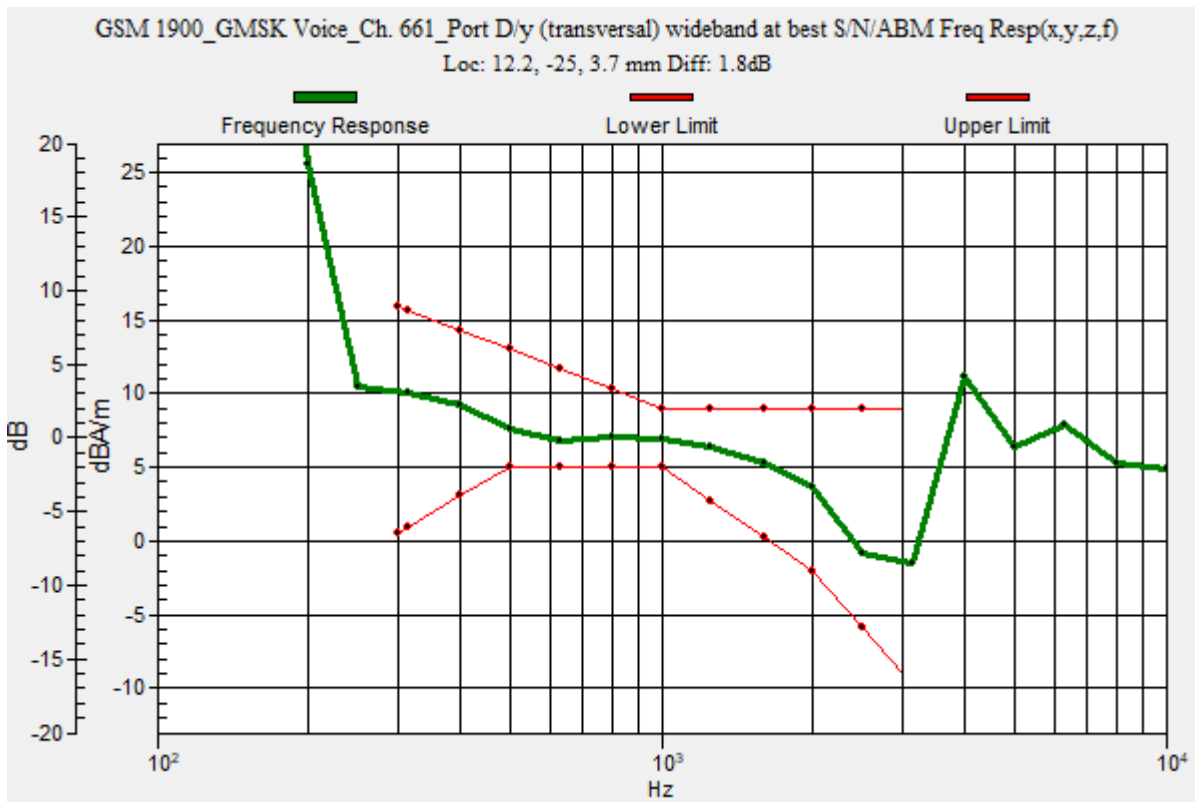
### T-Coil scan (scan for ANSI C63.19 2011 compliance)/GSM 1900\_GMSK Voice\_Ch. 661\_Port D/y (transversal) wideband at best S/N/ABM Freq Resp(x,y,z,f) (1x1x1):

Measurement grid: dx=10mm, dy=10mm  
 Signal Type: Audio File (.wav) 48k\_voice\_300-3000\_2s.wav  
 Output Gain: 47.1  
 Measure Window Start: 300ms  
 Measure Window Length: 2000ms  
 BWC applied: 10.80 dB  
 Device Reference Point: 0, 0, -6.3 mm

Category	Telephone parameters WD signal quality [(signal+noise)-to-noise ratio in decibels]
Category T1	0 dB to 10 dB
Category T2	10 dB to 20 dB
Category T3	20 dB to 30 dB
Category T4	> 30 dB

**Cursor:**

Diff = 1.80 dB  
 BWC Factor = 10.80 dB  
 Location: 12.2, -25, 3.7 mm



## GSM 1900

Communication System: UID 0, 1@GPRS-FDD (TDMA, GMSK, 1 slot) (0); Frequency: 1880 MHz; Duty Cycle: 1:8.00018

Phantom section: TCoil Section

DASY5 Configuration:

- Probe: AM1DV3 - 3083; ; Calibrated: 1/10/2022
- Sensor-Surface: 0mm (Fix Surface)
- Electronics: DAE4 Sn1357; Calibrated: 1/11/2022
- Phantom: HAC Test Arch with AMCC; Type: SD HAC P01 BB
- Measurement SW: DASY52, Version 52.10 (4); SEMCAD X Version 14.6.14 (7483)

### T-Coil scan (scan for ANSI C63.19 2011 compliance)/GSM 1900\_GMSK Voice\_Ch. 661\_Port D/y (transversal) 4.2mm 50 x 50/ABM Interpolated SNR(x,y,z) (121x121x1):

Interpolated grid: dx=1.000 mm, dy=1.000 mm

Signal Type: Audio File (.wav) 48k\_voice\_1kHz\_1s.wav

Output Gain: 24.02

Measure Window Start: 300ms

Measure Window Length: 1000ms

BWC applied: 0.16 dB

Device Reference Point: 0, 0, -6.3 mm

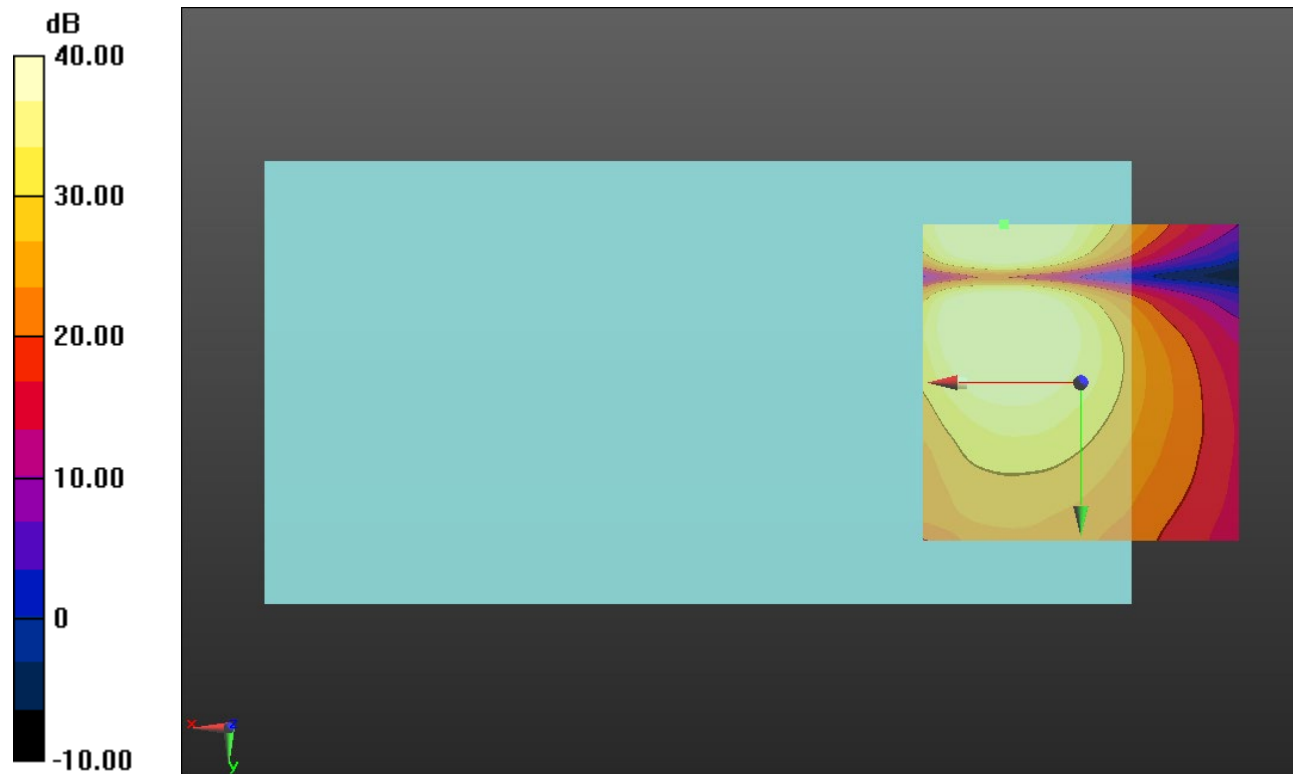
#### Cursor:

ABM1/ABM2 = 45.31 dB

ABM1 comp = 5.99 dBA/m

BWC Factor = 0.16 dB

Location: 12.1, -25, 3.7 mm



0 dB = 1.000 = 0.00 dB

## W-CDMA Band II

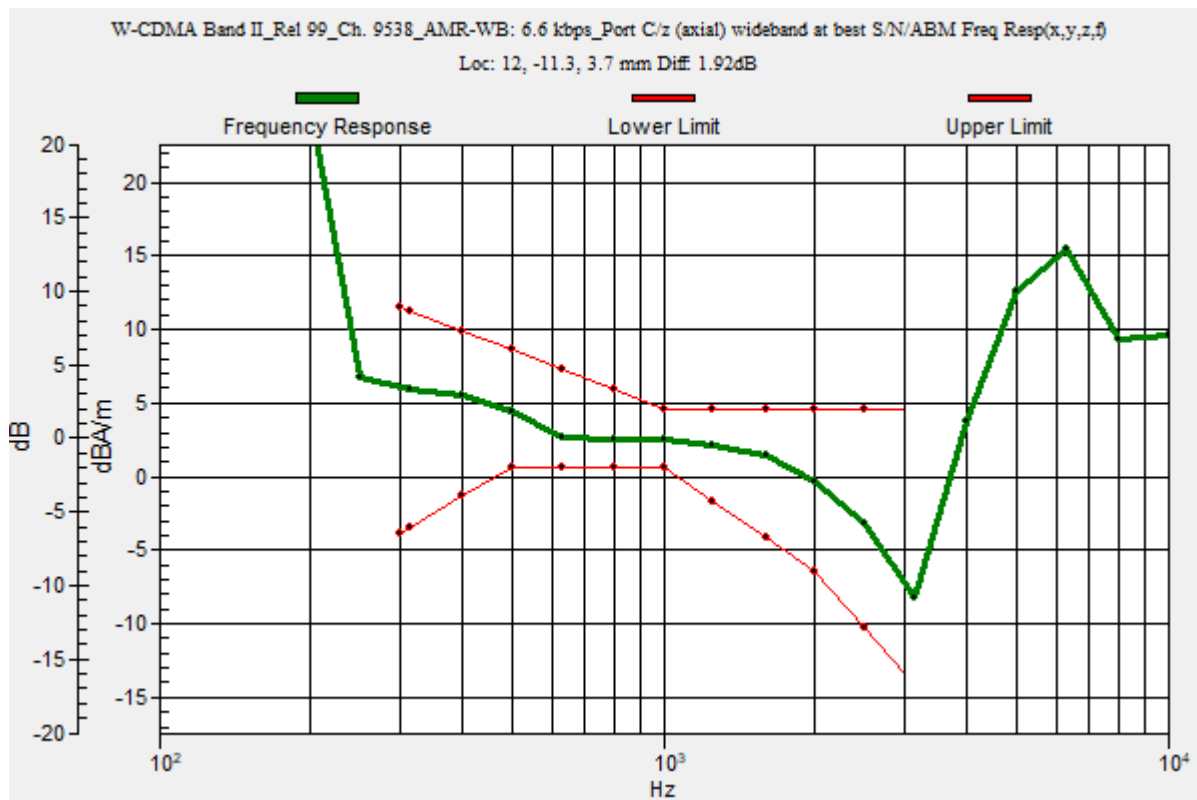
Communication System: UID 0, 1@UMTS-FDD (WCDMA) (0); Frequency: 1907.6 MHz;Duty Cycle: 1:1

### T-Coil scan (scan for ANSI C63.19 2011 compliance)/W-CDMA Band II\_Rel 99\_Ch. 9538\_AMR-WB: 6.6 kbps\_Port C/z (axial) wideband at best S/N/ABM Freq Resp(x,y,z,f)

(1x1x1): Measurement grid: dx=10mm, dy=10mm  
 Signal Type: Audio File (.wav) 48k\_voice\_300-3000\_2s.wav  
 Output Gain: 47.1  
 Measure Window Start: 300ms  
 Measure Window Length: 2000ms  
 BWC applied: 10.80 dB  
 Device Reference Point: 0, 0, -6.3 mm

Category	Telephone parameters WD signal quality [(signal+noise)-to-noise ratio in decibels]
Category T1	0 dB to 10 dB
Category T2	10 dB to 20 dB
Category T3	20 dB to 30 dB
Category T4	> 30 dB

**Cursor:**  
 Diff = 1.92 dB  
 BWC Factor = 10.80 dB  
 Location: 12, -11.3, 3.7 mm



## W-CDMA Band II

Communication System: UID 0, 1@UMTS-FDD (WCDMA) (0); Frequency: 1907.6 MHz; Duty Cycle: 1:1

Phantom section: TCoil Section

DASY5 Configuration:

- Probe: AM1DV3 - 3083; ; Calibrated: 1/10/2022
- Sensor-Surface: 0mm (Fix Surface)
- Electronics: DAE4 Sn1357; Calibrated: 1/11/2022
- Phantom: HAC Test Arch with AMCC; Type: SD HAC P01 BB
- Measurement SW: DASY52, Version 52.10 (4);SEMCAD X Version 14.6.14 (7483)

### T-Coil scan (scan for ANSI C63.19 2011 compliance)/W-CDMA Band II\_Rel 99\_Ch. 9538\_AMR-WB: 6.6 kbps\_Port C/z (axial) 4.2mm 50 x 50/ABM Interpolated SNR(x,y,z) (121x121x1):

Interpolated grid: dx=1.000 mm, dy=1.000 mm

Signal Type: Audio File (.wav) 48k\_voice\_1kHz\_1s.wav

Output Gain: 24.02

Measure Window Start: 300ms

Measure Window Length: 1000ms

BWC applied: 0.16 dB

Device Reference Point: 0, 0, -6.3 mm

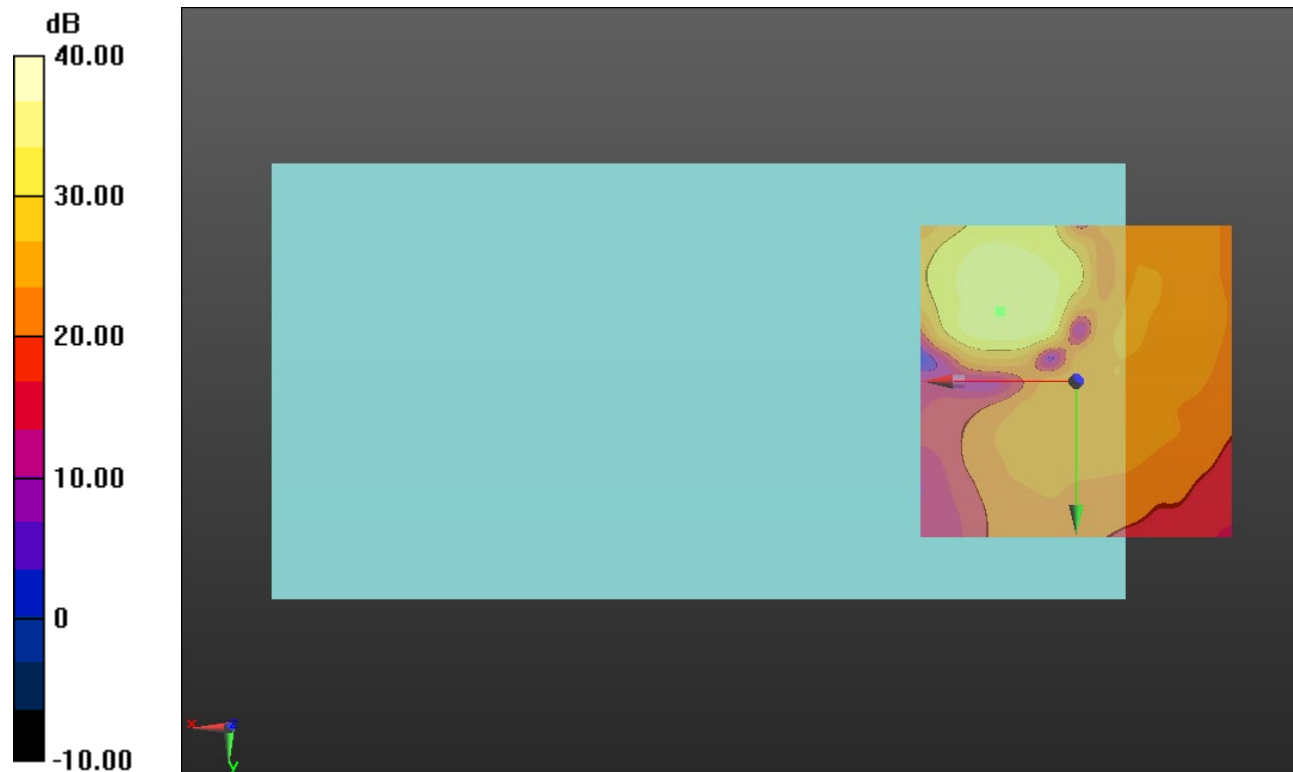
#### Cursor:

ABM1/ABM2 = 36.09 dB

ABM1 comp = 2.11 dBA/m

BWC Factor = 0.16 dB

Location: 12.1, -11.3, 3.7 mm



0 dB = 1.000 = 0.00 dB

### W-CDMA Band IV

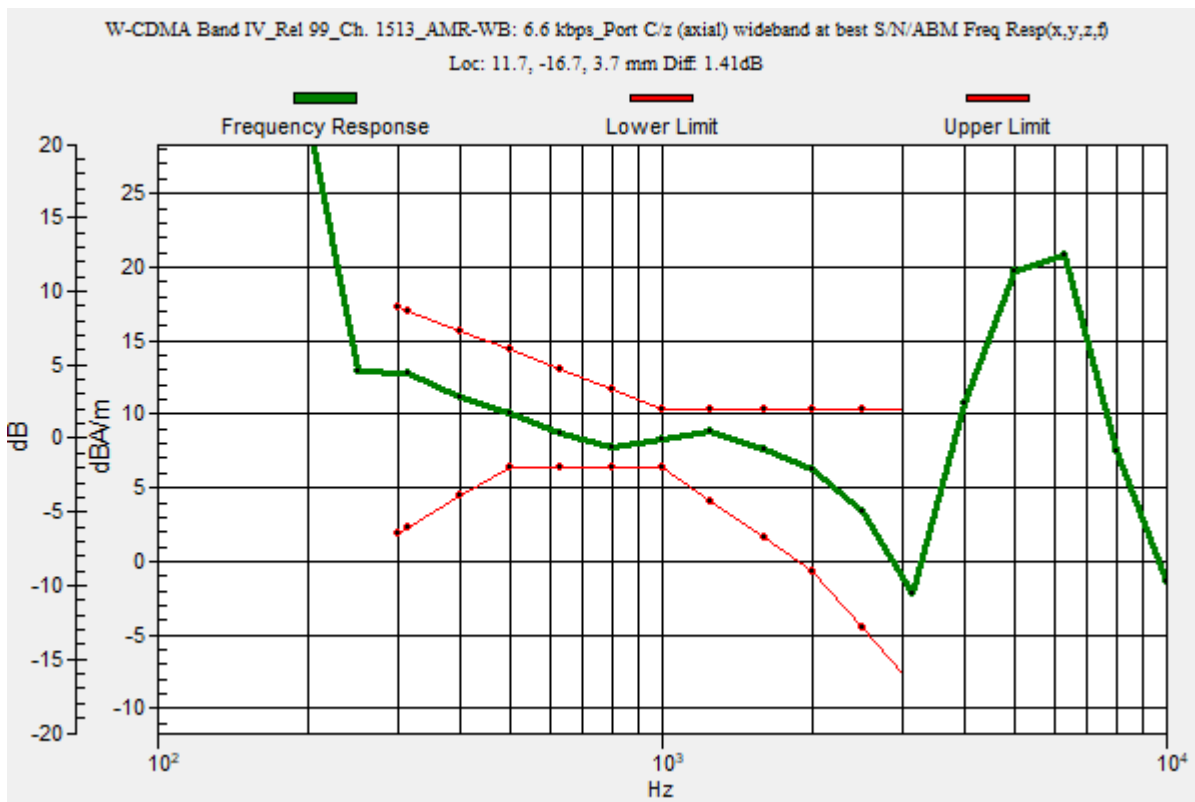
Communication System: UID 0, 1@UMTS-FDD (WCDMA) (0); Frequency: 1752.6 MHz;Duty Cycle: 1:1

### T-Coil scan (scan for ANSI C63.19 2011 compliance)/W-CDMA Band IV\_Rel 99\_Ch. 1513\_AMR-WB: 6.6 kbps\_Port C/z (axial) wideband at best S/N/ABM Freq Resp(x,y,z,f)

(1x1x1): Measurement grid: dx=10mm, dy=10mm  
 Signal Type: Audio File (.wav) 48k\_voice\_300-3000\_2s.wav  
 Output Gain: 47.1  
 Measure Window Start: 300ms  
 Measure Window Length: 2000ms  
 BWC applied: 10.80 dB  
 Device Reference Point: 0, 0, -6.3 mm

Category	Telephone parameters WD signal quality [(signal+noise)-to-noise ratio in decibels]
Category T1	0 dB to 10 dB
Category T2	10 dB to 20 dB
Category T3	20 dB to 30 dB
Category T4	> 30 dB

**Cursor:**  
 Diff = 1.41 dB  
 BWC Factor = 10.80 dB  
 Location: 11.7, -16.7, 3.7 mm



## W-CDMA Band IV

Communication System: UID 0, 1@UMTS-FDD (WCDMA) (0); Frequency: 1752.6 MHz; Duty Cycle: 1:1

Phantom section: TCoil Section

DASY5 Configuration:

- Probe: AM1DV3 - 3083; ; Calibrated: 1/10/2022
- Sensor-Surface: 0mm (Fix Surface)
- Electronics: DAE4 Sn1357; Calibrated: 1/11/2022
- Phantom: HAC Test Arch with AMCC; Type: SD HAC P01 BB
- Measurement SW: DASY52, Version 52.10 (4);SEMCAD X Version 14.6.14 (7483)

### T-Coil scan (scan for ANSI C63.19 2011 compliance)/W-CDMA Band IV\_Rel 99\_Ch. 1513\_AMR-WB: 6.6 kbps\_Port C/z (axial) 4.2mm 50 x 50/ABM Interpolated SNR(x,y,z) (121x121x1):

Interpolated grid: dx=1.000 mm, dy=1.000 mm

Signal Type: Audio File (.wav) 48k\_voice\_1kHz\_1s.wav

Output Gain: 24.02

Measure Window Start: 300ms

Measure Window Length: 1000ms

BWC applied: 0.16 dB

Device Reference Point: 0, 0, -6.3 mm

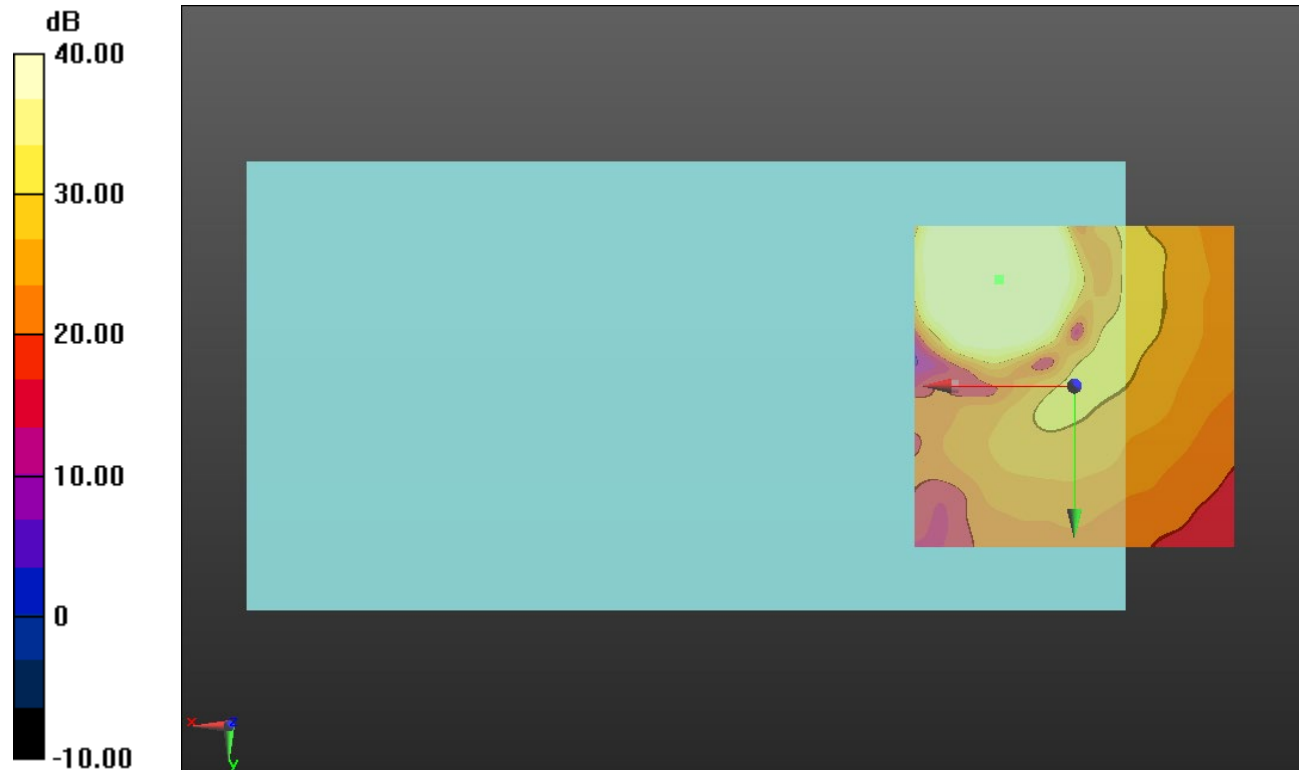
#### Cursor:

ABM1/ABM2 = 54.13 dB

ABM1 comp = 7.91 dBA/m

BWC Factor = 0.16 dB

Location: 11.7, -16.7, 3.7 mm



0 dB = 1.000 = 0.00 dB



### W-CDMA Band V

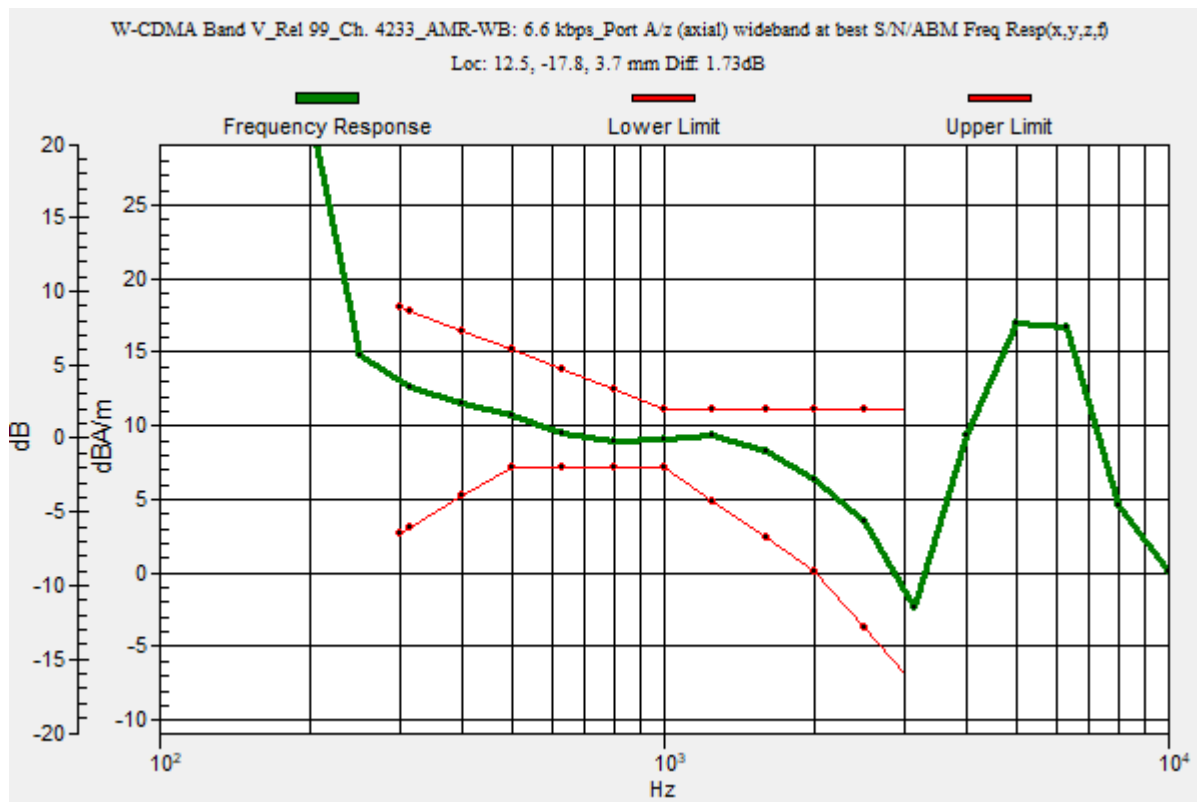
Communication System: UID 0, 1@UMTS-FDD (WCDMA) (0); Frequency: 846.6 MHz;Duty Cycle: 1:1

### T-Coil scan (scan for ANSI C63.19 2011 compliance)/W-CDMA Band V\_Rel 99\_Ch. 4233\_AMR-WB: 6.6 kbps\_Port A/z (axial) wideband at best S/N/ABM Freq Resp(x,y,z,f)

(1x1x1): Measurement grid: dx=10mm, dy=10mm  
 Signal Type: Audio File (.wav) 48k\_voice\_300-3000\_2s.wav  
 Output Gain: 47.1  
 Measure Window Start: 300ms  
 Measure Window Length: 2000ms  
 BWC applied: 10.80 dB  
 Device Reference Point: 0, 0, -6.3 mm

Category	Telephone parameters WD signal quality [(signal+noise)-to-noise ratio in decibels]
Category T1	0 dB to 10 dB
Category T2	10 dB to 20 dB
Category T3	20 dB to 30 dB
Category T4	> 30 dB

**Cursor:**  
 Diff = 1.73 dB  
 BWC Factor = 10.80 dB  
 Location: 12.5, -17.8, 3.7 mm



### W-CDMA Band V

Communication System: UID 0, 1@UMTS-FDD (WCDMA) (0); Frequency: 846.6 MHz; Duty Cycle: 1:1

Phantom section: TCoil Section

DASY5 Configuration:

- Probe: AM1DV3 - 3083; ; Calibrated: 1/10/2022
- Sensor-Surface: 0mm (Fix Surface)
- Electronics: DAE4 Sn1357; Calibrated: 1/11/2022
- Phantom: HAC Test Arch with AMCC; Type: SD HAC P01 BB
- Measurement SW: DASY52, Version 52.10 (4);SEMCAD X Version 14.6.14 (7483)

### T-Coil scan (scan for ANSI C63.19 2011 compliance)/W-CDMA Band V\_Rel 99\_Ch. 4233\_AMR-WB: 6.6 kbps\_Port A/z (axial) 4.2mm 50 x 50/ABM Interpolated SNR(x,y,z) (121x121x1): Interpolated grid: dx=1.000 mm, dy=1.000 mm

Signal Type: Audio File (.wav) 48k\_voice\_1kHz\_1s.wav

Output Gain: 24.02

Measure Window Start: 300ms

Measure Window Length: 1000ms

BWC applied: 0.16 dB

Device Reference Point: 0, 0, -6.3 mm

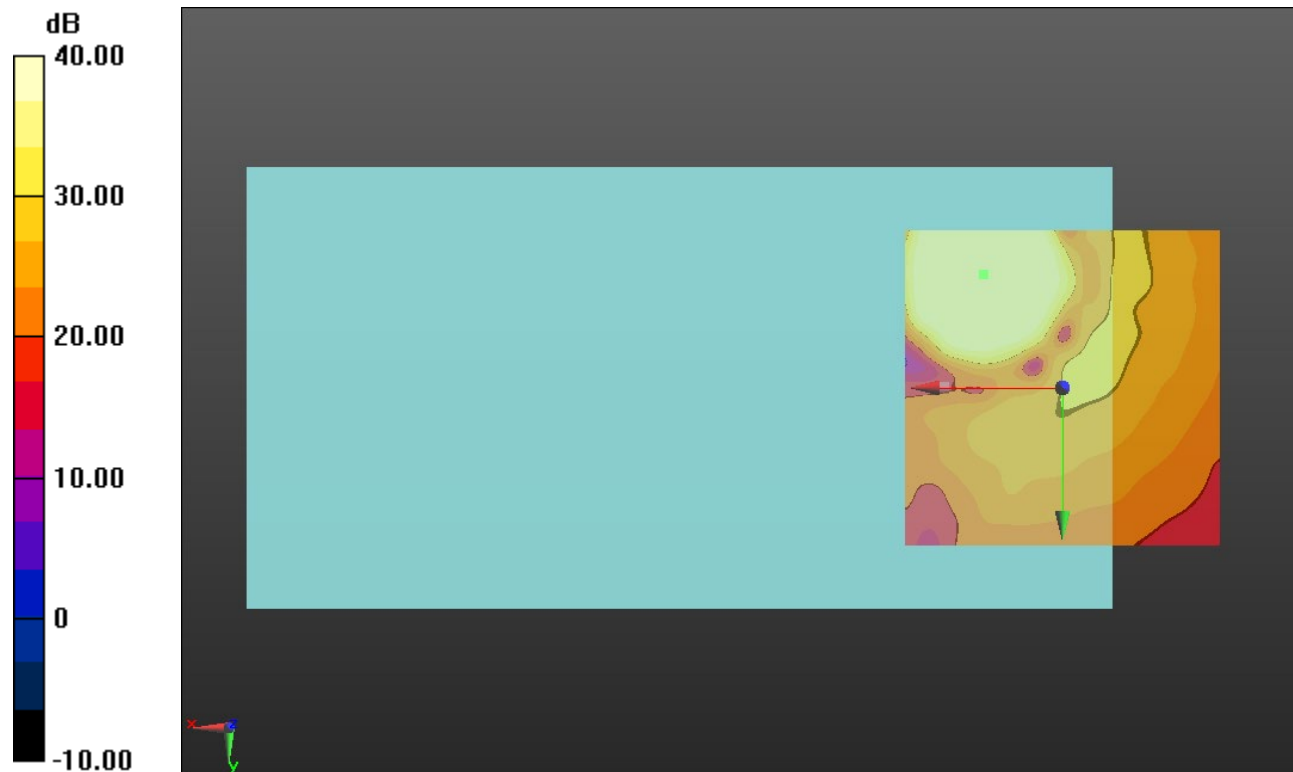
#### Cursor:

ABM1/ABM2 = 53.63 dB

ABM1 comp = 8.16 dBA/m

BWC Factor = 0.16 dB

Location: 12.5, -17.9, 3.7 mm



0 dB = 1.000 = 0.00 dB

## LTE Band 2

Communication System: UID 0, 1@LTE (FDD) (0); Frequency: 1880 MHz;Duty Cycle: 1:1

### T-Coil scan (scan for ANSI C63.19 2011 compliance)/LTE Band 2\_QPSK\_20MHz BW\_RB 1,49 Ch. 18900\_AMR-WB: 6.6 kbps\_Port B/y (transversal) wideband at best S/N/ABM

**Freq Resp(x,y,z,f) (1x1x1):** Measurement grid: dx=10mm, dy=10mm

Signal Type: Audio File (.wav) 48k\_voice\_300-3000\_2s.wav

Output Gain: 47.1

Measure Window Start: 300ms

Measure Window Length: 2000ms

BWC applied: 10.80 dB

Device Reference Point: 0, 0, -6.3 mm

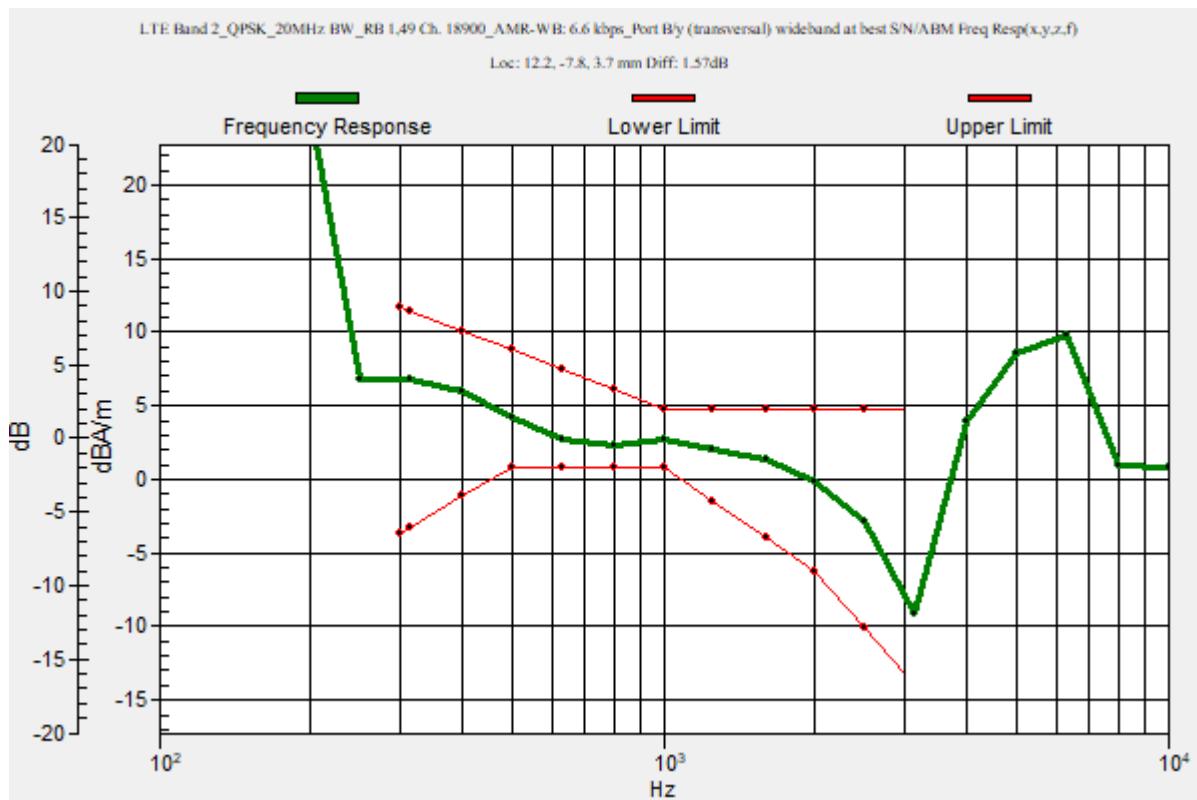
Category	Telephone parameters WD signal quality [(signal+noise)-to-noise ratio in decibels]
Category T1	0 dB to 10 dB
Category T2	10 dB to 20 dB
Category T3	20 dB to 30 dB
Category T4	> 30 dB

**Cursor:**

Diff = 1.57 dB

BWC Factor = 10.80 dB

Location: 12.2, -7.8, 3.7 mm



## LTE Band 2

Communication System: UID 0, 1@LTE (FDD) (0); Frequency: 1880 MHz; Duty Cycle: 1:1

Phantom section: TCoil Section

DASY5 Configuration:

- Probe: AM1DV3 - 3083; ; Calibrated: 1/10/2022
- Sensor-Surface: 0mm (Fix Surface)
- Electronics: DAE4 Sn1357; Calibrated: 1/11/2022
- Phantom: HAC Test Arch with AMCC; Type: SD HAC P01 BB
- Measurement SW: DASY52, Version 52.10 (4);SEMCAD X Version 14.6.14 (7483)

### T-Coil scan (scan for ANSI C63.19 2011 compliance)/LTE Band 2\_QPSK\_20MHz BW\_RB 1,49 Ch. 18900\_AMR-WB: 6.6 kbps\_Port B/y (transversal) 4.2mm 50 x 50/ABM

**Interpolated SNR(x,y,z) (121x121x1):** Interpolated grid: dx=1.000 mm, dy=1.000 mm

Signal Type: Audio File (.wav) 48k\_voice\_1kHz\_1s.wav

Output Gain: 24.02

Measure Window Start: 300ms

Measure Window Length: 1000ms

BWC applied: 0.16 dB

Device Reference Point: 0, 0, -6.3 mm

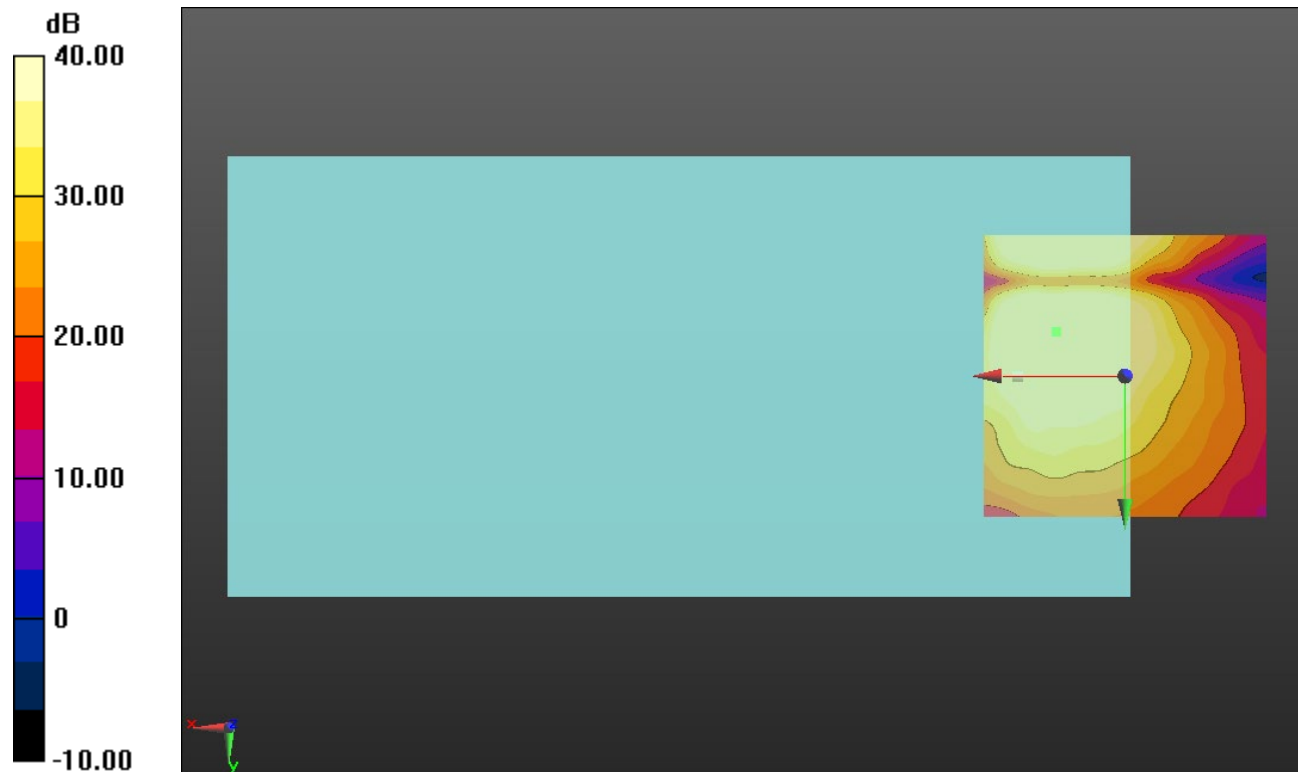
#### Cursor:

ABM1/ABM2 = 49.14 dB

ABM1 comp = 1.86 dBA/m

BWC Factor = 0.16 dB

Location: 12.1, -7.9, 3.7 mm



0 dB = 1.000 = 0.00 dB

### LTE Band 4

Communication System: UID 0, 1@LTE (FDD) (0); Frequency: 1732.5 MHz;Duty Cycle: 1:1

### T-Coil scan (scan for ANSI C63.19 2011 compliance)/LTE Band 4\_QPSK\_20MHz BW\_RB 1,49 Ch. 20175\_AMR-WB: 6.6 kbps\_Port B/y (transversal) wideband at best S/N/ABM

**Freq Resp(x,y,z,f) (1x1x1):** Measurement grid: dx=10mm, dy=10mm

Signal Type: Audio File (.wav) 48k\_voice\_300-3000\_2s.wav

Output Gain: 47.1

Measure Window Start: 300ms

Measure Window Length: 2000ms

BWC applied: 10.80 dB

Device Reference Point: 0, 0, -6.3 mm

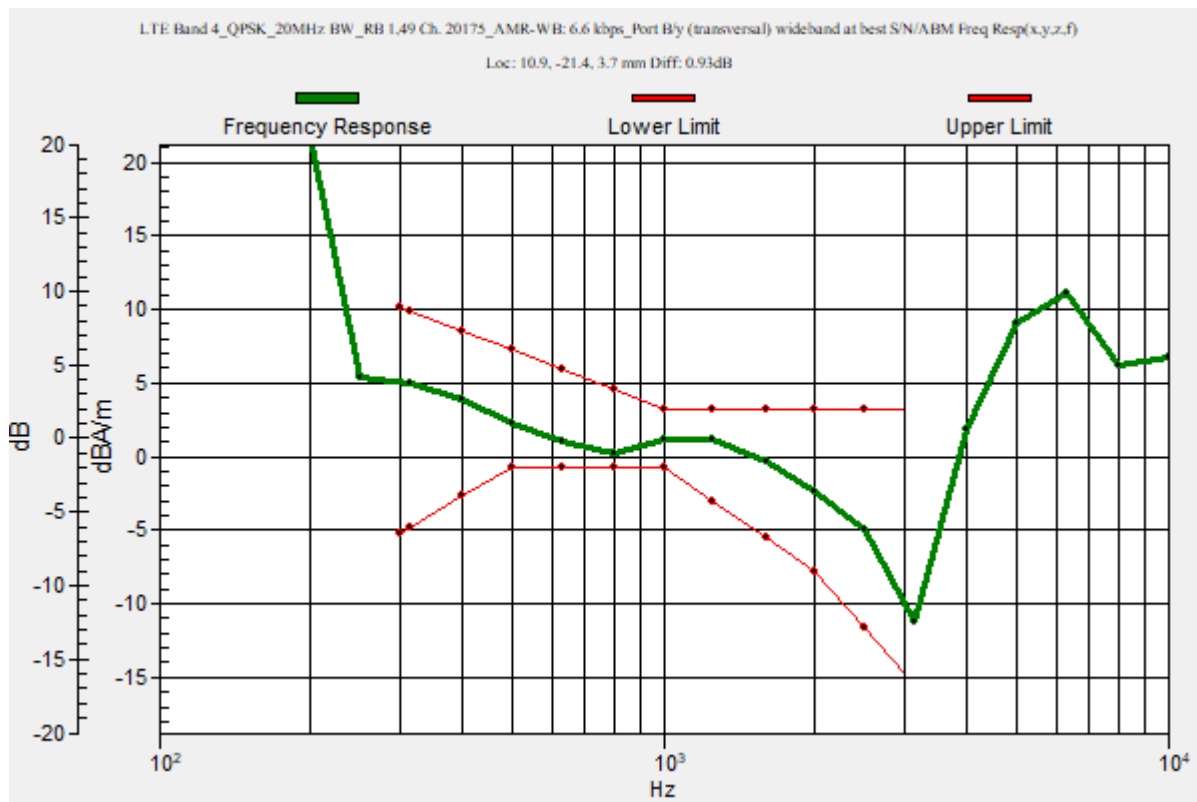
Category	Telephone parameters WD signal quality [(signal+noise)-to-noise ratio in decibels]
Category T1	0 dB to 10 dB
Category T2	10 dB to 20 dB
Category T3	20 dB to 30 dB
Category T4	> 30 dB

**Cursor:**

Diff = 0.93 dB

BWC Factor = 10.80 dB

Location: 10.9, -21.4, 3.7 mm



### LTE Band 4

Communication System: UID 0, 1@LTE (FDD) (0); Frequency: 1732.5 MHz; Duty Cycle: 1:1

Phantom section: TCoil Section

DASY5 Configuration:

- Probe: AM1DV3 - 3083; ; Calibrated: 1/10/2022
- Sensor-Surface: 0mm (Fix Surface)
- Electronics: DAE4 Sn1357; Calibrated: 1/11/2022
- Phantom: HAC Test Arch with AMCC; Type: SD HAC P01 BB
- Measurement SW: DASY52, Version 52.10 (4);SEMCAD X Version 14.6.14 (7483)

### T-Coil scan (scan for ANSI C63.19 2011 compliance)/LTE Band 4\_QPSK\_20MHz BW\_RB 1,49 Ch. 20175\_AMR-WB: 6.6 kbps\_Port B/y (transversal) 4.2mm 50 x 50/ABM

**Interpolated SNR(x,y,z) (121x121x1):** Interpolated grid: dx=1.000 mm, dy=1.000 mm

Signal Type: Audio File (.wav) 48k\_voice\_1kHz\_1s.wav

Output Gain: 24.02

Measure Window Start: 300ms

Measure Window Length: 1000ms

BWC applied: 0.16 dB

Device Reference Point: 0, 0, -6.3 mm

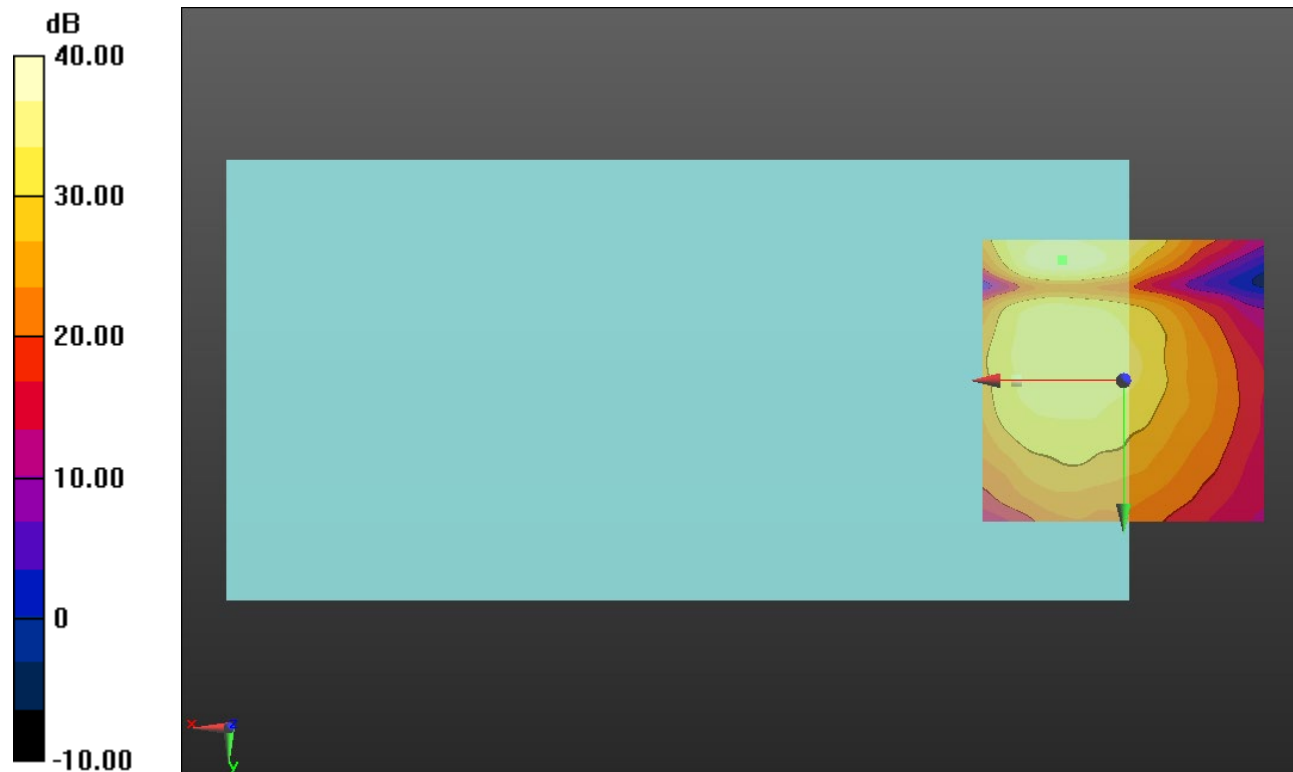
**Cursor:**

ABM1/ABM2 = 39.16 dB

ABM1 comp = -0.61 dBA/m

BWC Factor = 0.16 dB

Location: 10.8, -21.3, 3.7 mm



0 dB = 1.000 = 0.00 dB

### LTE Band 5

Communication System: UID 0, 1@LTE (FDD) (0); Frequency: 836.5 MHz;Duty Cycle: 1:1

### T-Coil scan (scan for ANSI C63.19 2011 compliance)/LTE Band 5\_QPSK\_10MHz BW\_RB 1,25 Ch. 20525\_AMR-WB: 6.6 kbps\_Port B/y (transversal) wideband at best S/N/ABM

**Freq Resp(x,y,z,f) (1x1x1):** Measurement grid: dx=10mm, dy=10mm

Signal Type: Audio File (.wav) 48k\_voice\_300-3000\_2s.wav

Output Gain: 47.1

Measure Window Start: 300ms

Measure Window Length: 2000ms

BWC applied: 10.80 dB

Device Reference Point: 0, 0, -6.3 mm

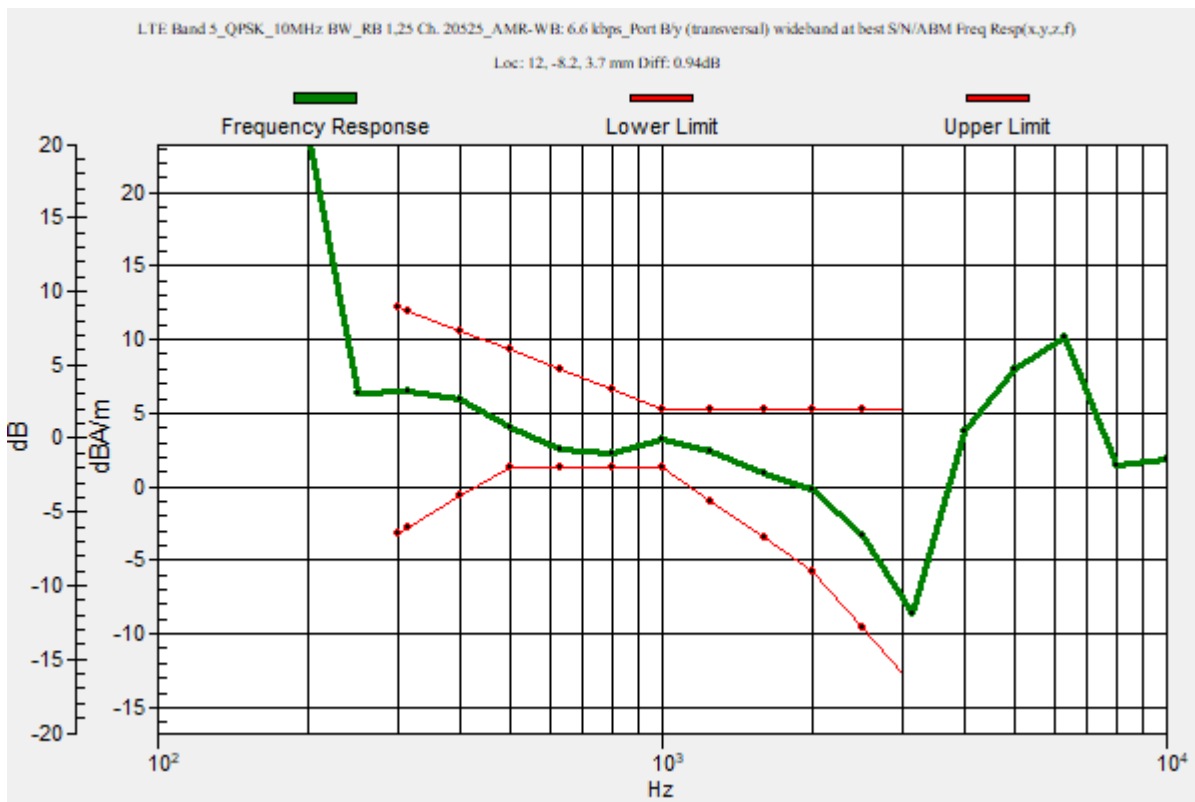
Category	Telephone parameters WD signal quality [(signal+noise)-to-noise ratio in decibels]
Category T1	0 dB to 10 dB
Category T2	10 dB to 20 dB
Category T3	20 dB to 30 dB
Category T4	> 30 dB

**Cursor:**

Diff = 0.94 dB

BWC Factor = 10.80 dB

Location: 12, -8.2, 3.7 mm



### LTE Band 5

Communication System: UID 0, 1@LTE (FDD) (0); Frequency: 836.5 MHz; Duty Cycle: 1:1

Phantom section: TCoil Section

DASY5 Configuration:

- Probe: AM1DV3 - 3083; ; Calibrated: 1/10/2022
- Sensor-Surface: 0mm (Fix Surface)
- Electronics: DAE4 Sn1357; Calibrated: 1/11/2022
- Phantom: HAC Test Arch with AMCC; Type: SD HAC P01 BB
- Measurement SW: DASY52, Version 52.10 (4);SEMCAD X Version 14.6.14 (7483)

### T-Coil scan (scan for ANSI C63.19 2011 compliance)/LTE Band 5\_QPSK\_10MHz BW\_RB 1,25 Ch. 20525\_AMR-WB: 6.6 kbps\_Port B/y (transversal) 4.2mm 50 x 50/ABM

Interpolated SNR(x,y,z) (121x121x1): Interpolated grid: dx=1.000 mm, dy=1.000 mm

Signal Type: Audio File (.wav) 48k\_voice\_1kHz\_1s.wav

Output Gain: 24.02

Measure Window Start: 300ms

Measure Window Length: 1000ms

BWC applied: 0.16 dB

Device Reference Point: 0, 0, -6.3 mm

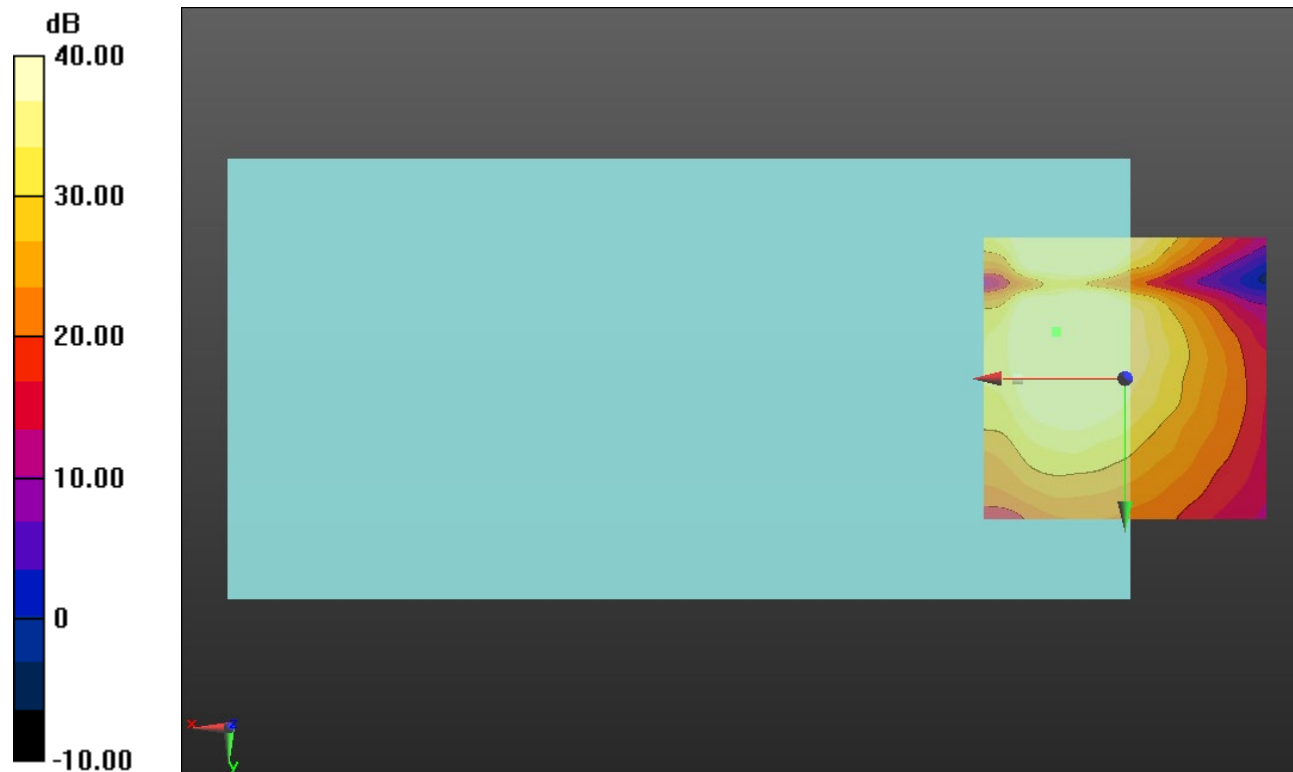
#### Cursor:

ABM1/ABM2 = 48.69 dB

ABM1 comp = 1.69 dBA/m

BWC Factor = 0.16 dB

Location: 12.1, -8.3, 3.7 mm



0 dB = 1.000 = 0.00 dB



### LTE Band 7

Communication System: UID 0, 1@LTE (FDD) (0); Frequency: 2535 MHz;Duty Cycle: 1:1

### T-Coil scan (scan for ANSI C63.19 2011 compliance)/LTE Band 7\_QPSK\_20MHz BW\_RB 1,49 Ch. 21100\_AMR-WB: 6.6 kbps\_Port B/y (transversal) wideband at best S/N/ABM

**Freq Resp(x,y,z,f) (1x1x1):** Measurement grid: dx=10mm, dy=10mm

Signal Type: Audio File (.wav) 48k\_voice\_300-3000\_2s.wav

Output Gain: 47.1

Measure Window Start: 300ms

Measure Window Length: 2000ms

BWC applied: 10.80 dB

Device Reference Point: 0, 0, -6.3 mm

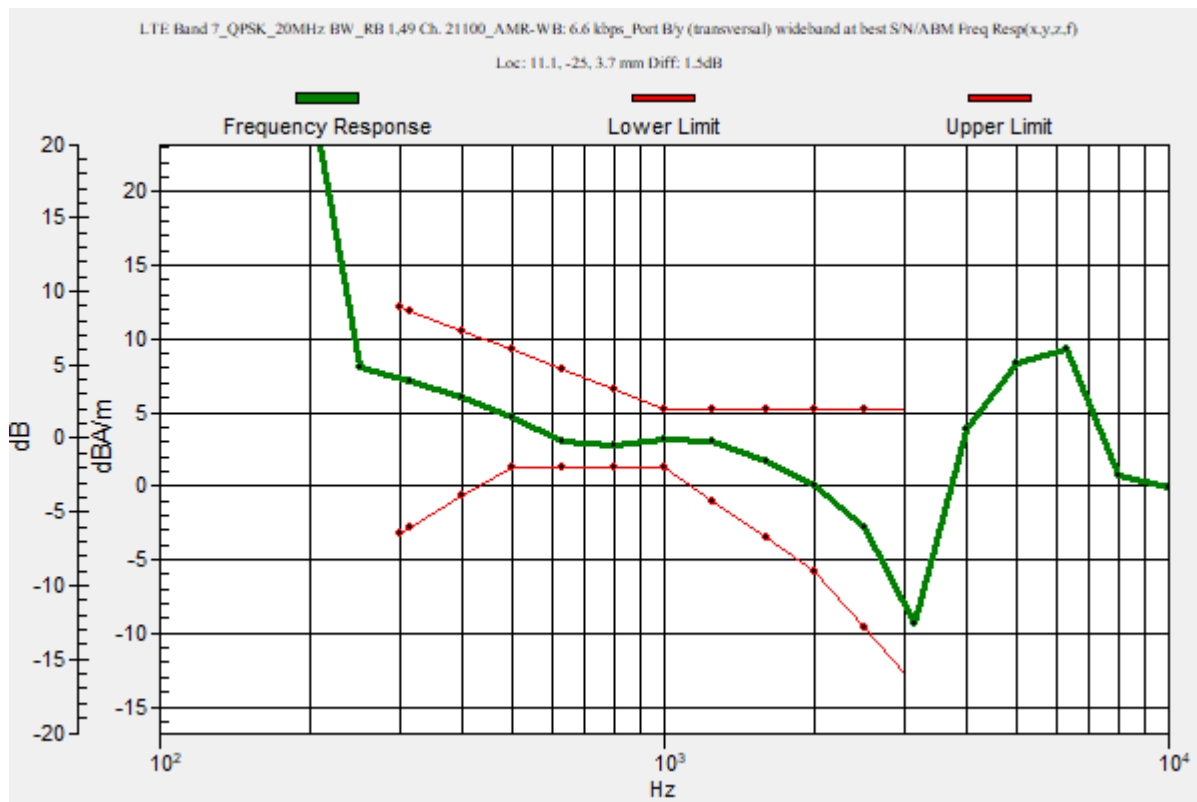
Category	Telephone parameters WD signal quality [(signal+noise)-to-noise ratio in decibels]
Category T1	0 dB to 10 dB
Category T2	10 dB to 20 dB
Category T3	20 dB to 30 dB
Category T4	> 30 dB

**Cursor:**

Diff = 1.50 dB

BWC Factor = 10.80 dB

Location: 11.1, -25, 3.7 mm



## LTE Band 7

Communication System: UID 0, 1@LTE (FDD) (0); Frequency: 2535 MHz; Duty Cycle: 1:1

Phantom section: TCoil Section

DASY5 Configuration:

- Probe: AM1DV3 - 3083; ; Calibrated: 1/10/2022
- Sensor-Surface: 0mm (Fix Surface)
- Electronics: DAE4 Sn1357; Calibrated: 1/11/2022
- Phantom: HAC Test Arch with AMCC; Type: SD HAC P01 BB
- Measurement SW: DASY52, Version 52.10 (4);SEMCAD X Version 14.6.14 (7483)

### T-Coil scan (scan for ANSI C63.19 2011 compliance)/LTE Band 7\_QPSK\_20MHz BW\_RB 1,49 Ch. 21100\_AMR-WB: 6.6 kbps\_Port B/y (transversal) 4.2mm 50 x 50/ABM

**Interpolated SNR(x,y,z) (121x121x1):** Interpolated grid: dx=1.000 mm, dy=1.000 mm

Signal Type: Audio File (.wav) 48k\_voice\_1kHz\_1s.wav

Output Gain: 24.02

Measure Window Start: 300ms

Measure Window Length: 1000ms

BWC applied: 0.16 dB

Device Reference Point: 0, 0, -6.3 mm

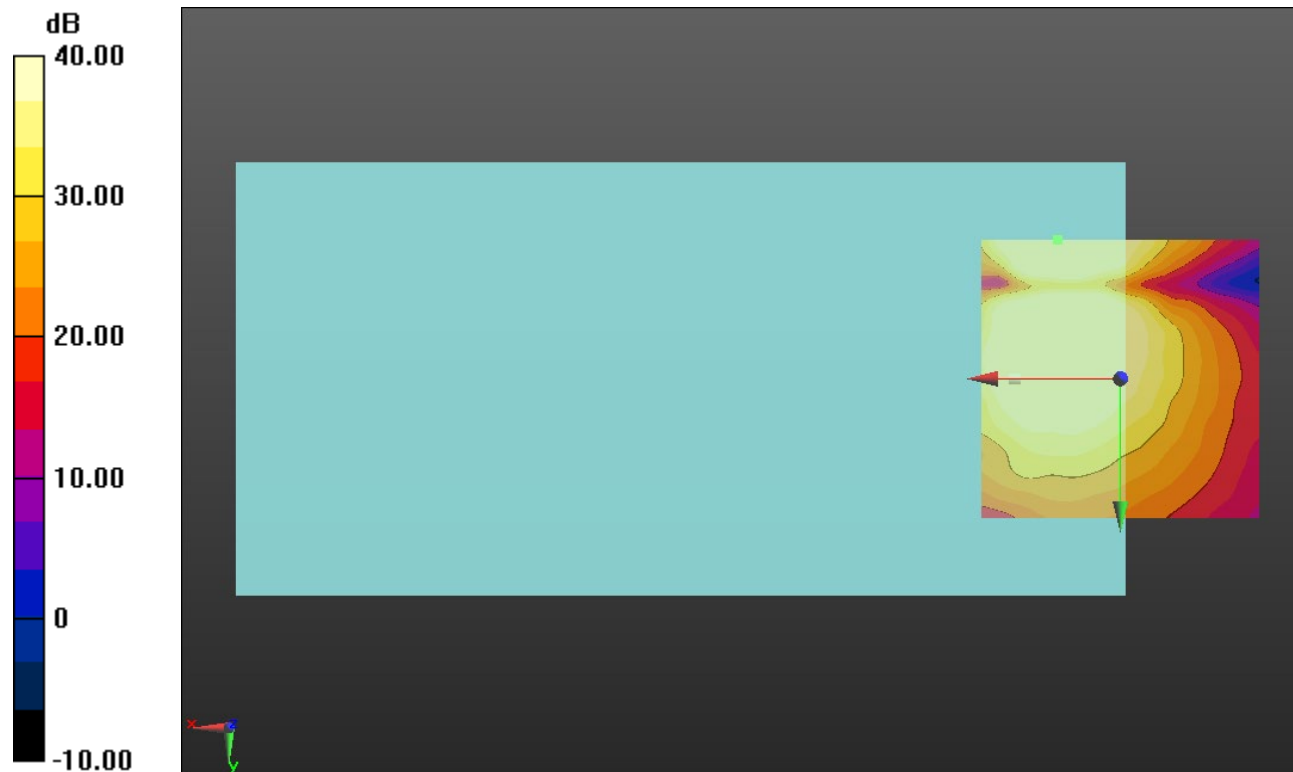
#### Cursor:

ABM1/ABM2 = 48.92 dB

ABM1 comp = 2.07 dBA/m

BWC Factor = 0.16 dB

Location: 11.3, -25, 3.7 mm



0 dB = 1.000 = 0.00 dB

### LTE Band 12

Communication System: UID 0, 1@LTE (FDD) (0); Frequency: 707.5 MHz;Duty Cycle: 1:1

### T-Coil scan (scan for ANSI C63.19 2011 compliance)/LTE Band 12\_QPSK\_10MHz BW\_RB 1,25 Ch. 23095\_AMR-WB: 6.6 kbps\_Port B/y (transversal) wideband at best S/N/ABM Freq Resp(x,y,z,f) (1x1x1):

Measurement grid: dx=10mm, dy=10mm

Signal Type: Audio File (.wav) 48k\_voice\_300-3000\_2s.wav

Output Gain: 47.1

Measure Window Start: 300ms

Measure Window Length: 2000ms

BWC applied: 10.80 dB

Device Reference Point: 0, 0, -6.3 mm

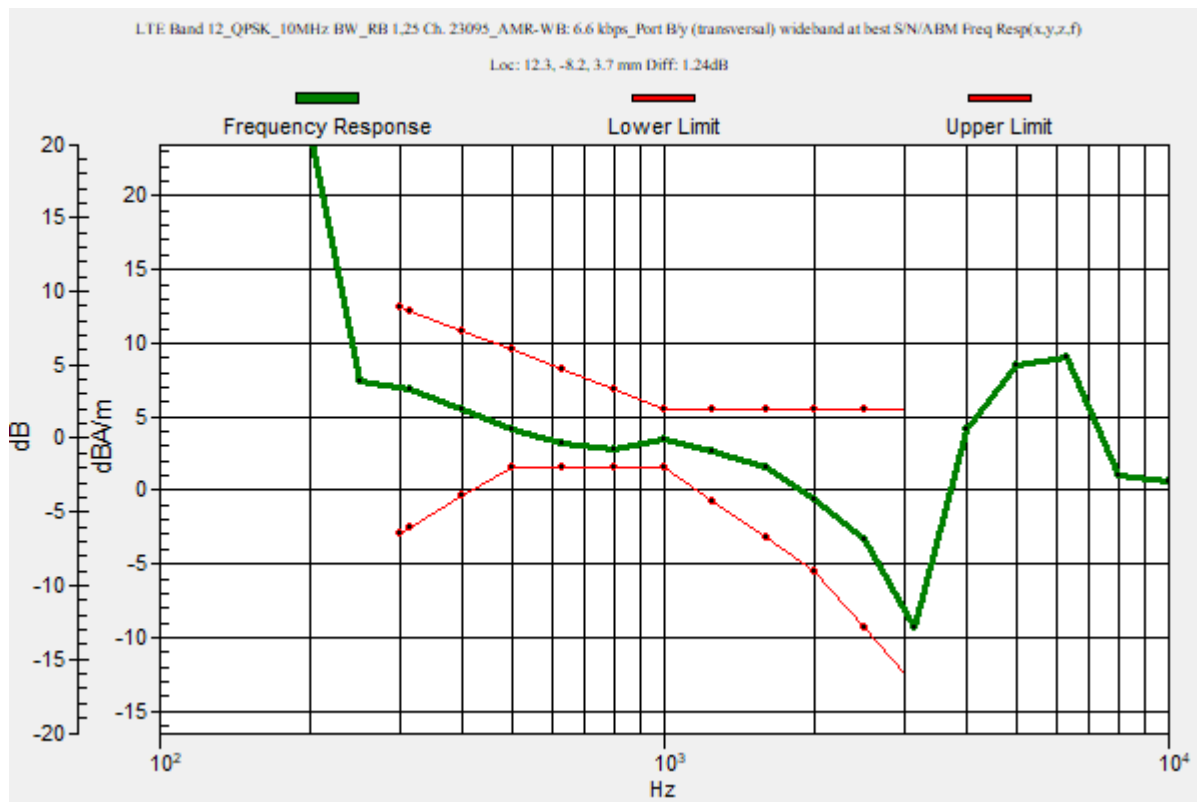
Category	Telephone parameters WD signal quality [(signal+noise)-to-noise ratio in decibels]
Category T1	0 dB to 10 dB
Category T2	10 dB to 20 dB
Category T3	20 dB to 30 dB
Category T4	> 30 dB

**Cursor:**

Diff = 1.24 dB

BWC Factor = 10.80 dB

Location: 12.3, -8.2, 3.7 mm



### LTE Band 12

Communication System: UID 0, 1@LTE (FDD) (0); Frequency: 707.5 MHz; Duty Cycle: 1:1

Phantom section: TCoil Section

DASY5 Configuration:

- Probe: AM1DV3 - 3083; ; Calibrated: 1/10/2022
- Sensor-Surface: 0mm (Fix Surface)
- Electronics: DAE4 Sn1357; Calibrated: 1/11/2022
- Phantom: HAC Test Arch with AMCC; Type: SD HAC P01 BB
- Measurement SW: DASY52, Version 52.10 (4);SEMCAD X Version 14.6.14 (7483)

### T-Coil scan (scan for ANSI C63.19 2011 compliance)/LTE Band 12\_QPSK\_10MHz BW\_RB 1,25 Ch. 23095\_AMR-WB: 6.6 kbps\_Port B/y (transversal) 4.2mm 50 x 50/ABM Interpolated SNR(x,y,z) (121x121x1): Interpolated grid: dx=1.000 mm, dy=1.000 mm

Signal Type: Audio File (.wav) 48k\_voice\_1kHz\_1s.wav

Output Gain: 24.02

Measure Window Start: 300ms

Measure Window Length: 1000ms

BWC applied: 0.16 dB

Device Reference Point: 0, 0, -6.3 mm

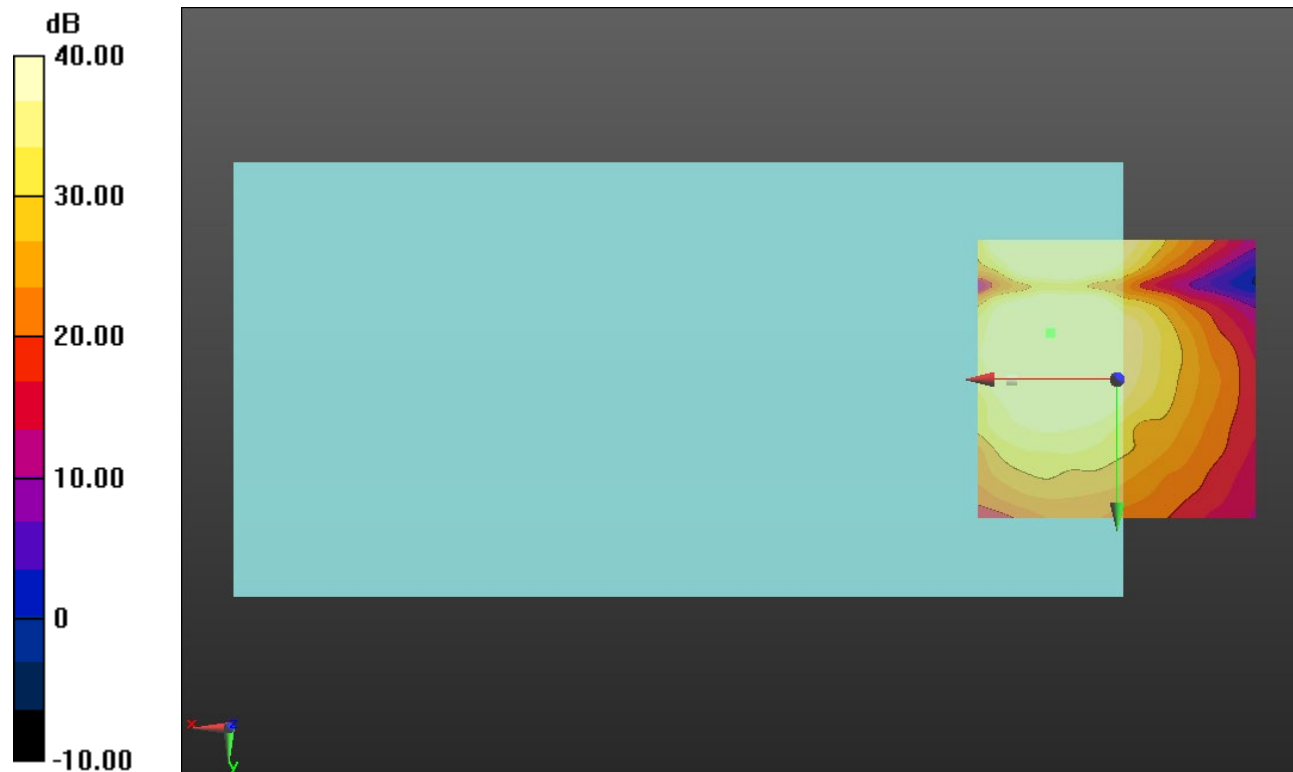
#### Cursor:

ABM1/ABM2 = 49.62 dB

ABM1 comp = 1.60 dBA/m

BWC Factor = 0.16 dB

Location: 12.1, -8.3, 3.7 mm



0 dB = 1.000 = 0.00 dB

### LTE Band 13

Communication System: UID 0, 1@LTE (FDD) (0); Frequency: 782 MHz;Duty Cycle: 1:1

### T-Coil scan (scan for ANSI C63.19 2011 compliance)/LTE Band 13\_QPSK\_10MHz BW\_RB 1,25 Ch. 23230\_AMR-WB: 6.6 kbps\_Port B/y (transversal) wideband at best

**S/N/ABM Freq Resp(x,y,z,f) (1x1x1):** Measurement grid: dx=10mm, dy=10mm

Signal Type: Audio File (.wav) 48k\_voice\_300-3000\_2s.wav

Output Gain: 47.1

Measure Window Start: 300ms

Measure Window Length: 2000ms

BWC applied: 10.80 dB

Device Reference Point: 0, 0, -6.3 mm

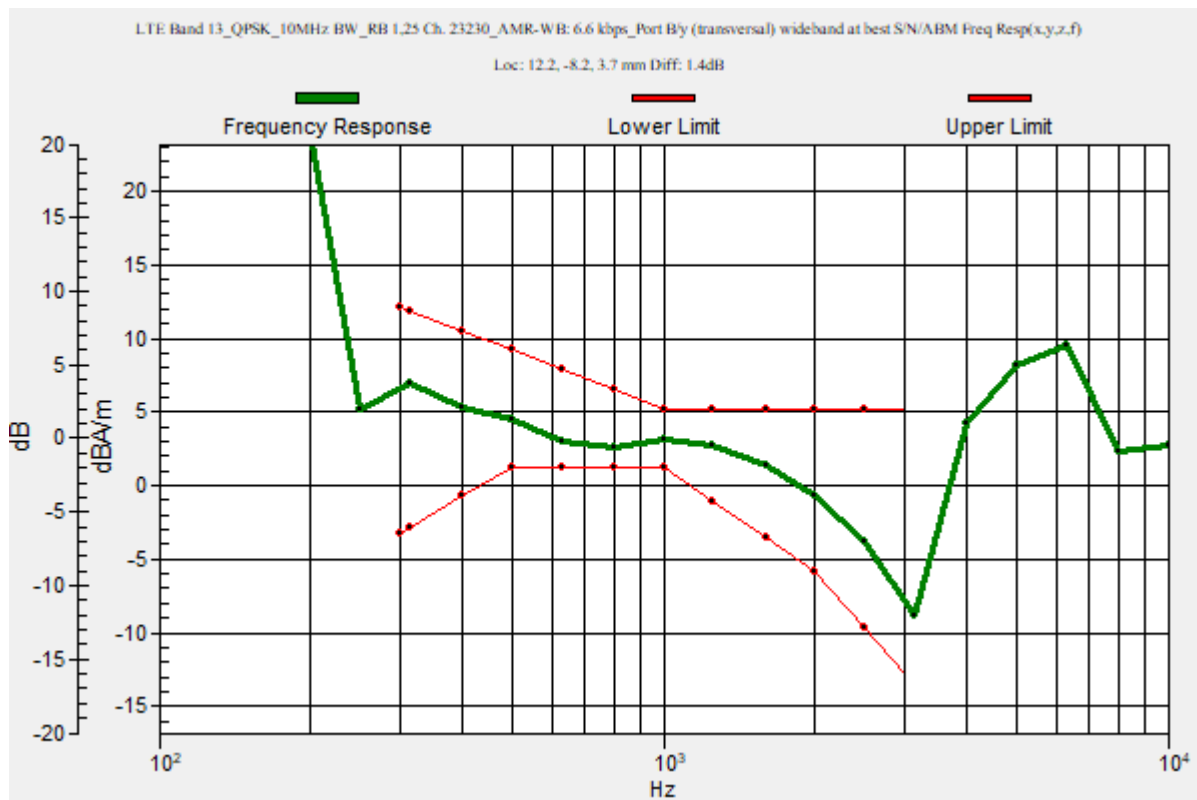
Category	Telephone parameters WD signal quality [(signal+noise)-to-noise ratio in decibels]
Category T1	0 dB to 10 dB
Category T2	10 dB to 20 dB
Category T3	20 dB to 30 dB
Category T4	> 30 dB

**Cursor:**

Diff = 1.40 dB

BWC Factor = 10.80 dB

Location: 12.2, -8.2, 3.7 mm



### LTE Band 13

Communication System: UID 0, 1@LTE (FDD) (0); Frequency: 782 MHz; Duty Cycle: 1:1

Phantom section: TCoil Section

DASY5 Configuration:

- Probe: AM1DV3 - 3083; ; Calibrated: 1/10/2022
- Sensor-Surface: 0mm (Fix Surface)
- Electronics: DAE4 Sn1357; Calibrated: 1/11/2022
- Phantom: HAC Test Arch with AMCC; Type: SD HAC P01 BB
- Measurement SW: DASY52, Version 52.10 (4);SEMCAD X Version 14.6.14 (7483)

### T-Coil scan (scan for ANSI C63.19 2011 compliance)/LTE Band 13\_QPSK\_10MHz BW\_RB 1,25 Ch. 23230\_AMR-WB: 6.6 kbps\_Port B/y (transversal) 4.2mm 50 x 50/ABM Interpolated SNR(x,y,z) (121x121x1): Interpolated grid: dx=1.000 mm, dy=1.000 mm

Signal Type: Audio File (.wav) 48k\_voice\_1kHz\_1s.wav

Output Gain: 24.02

Measure Window Start: 300ms

Measure Window Length: 1000ms

BWC applied: 0.16 dB

Device Reference Point: 0, 0, -6.3 mm

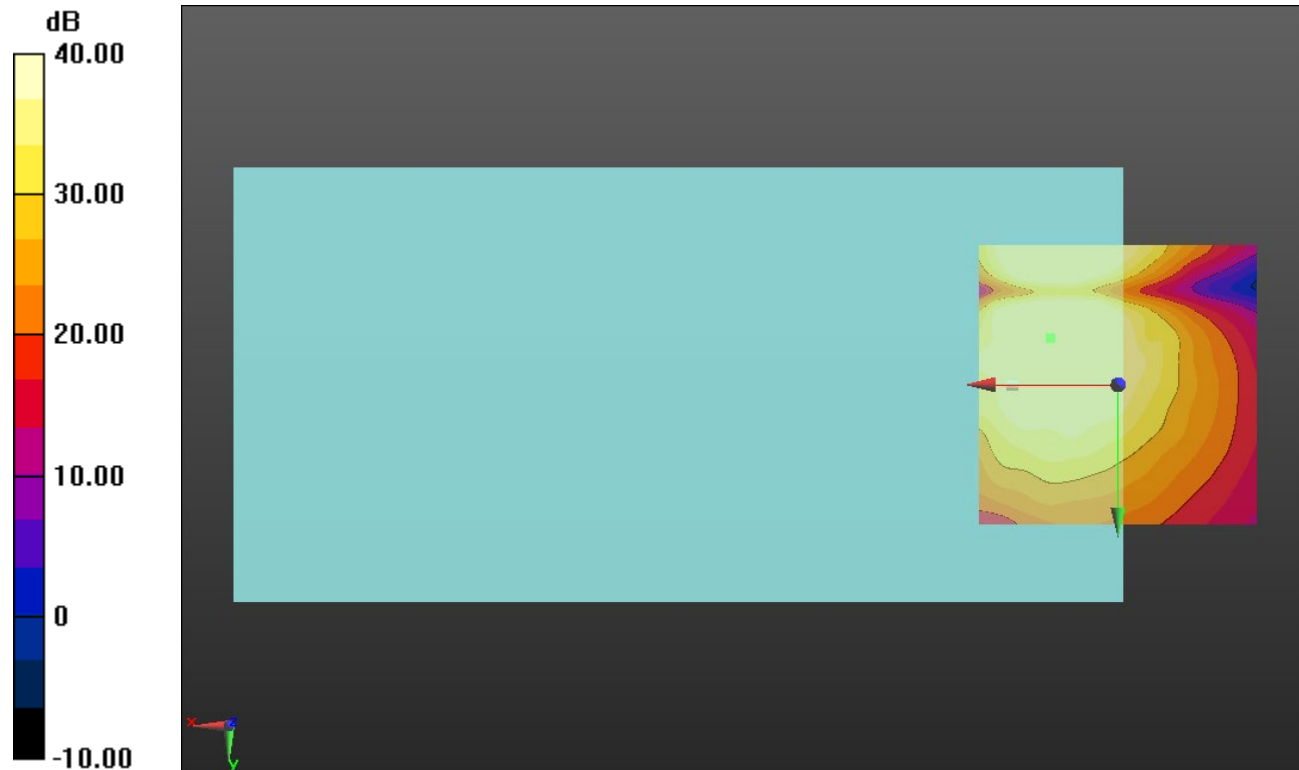
#### Cursor:

ABM1/ABM2 = 49.80 dB

ABM1 comp = 1.57 dBA/m

BWC Factor = 0.16 dB

Location: 12.1, -8.3, 3.7 mm



0 dB = 1.000 = 0.00 dB

### LTE Band 14

Communication System: UID 0, 1@LTE (FDD) (0); Frequency: 793 MHz;Duty Cycle: 1:1

### T-Coil scan (scan for ANSI C63.19 2011 compliance)/LTE Band 14\_QPSK\_10MHz BW\_RB 1,25 Ch. 23330\_AMR-WB: 6.6 kbps\_Port B/y (transversal) wideband at best

**S/N/ABM Freq Resp(x,y,z,f) (1x1x1):** Measurement grid: dx=10mm, dy=10mm

Signal Type: Audio File (.wav) 48k\_voice\_300-3000\_2s.wav

Output Gain: 47.1

Measure Window Start: 300ms

Measure Window Length: 2000ms

BWC applied: 10.80 dB

Device Reference Point: 0, 0, -6.3 mm

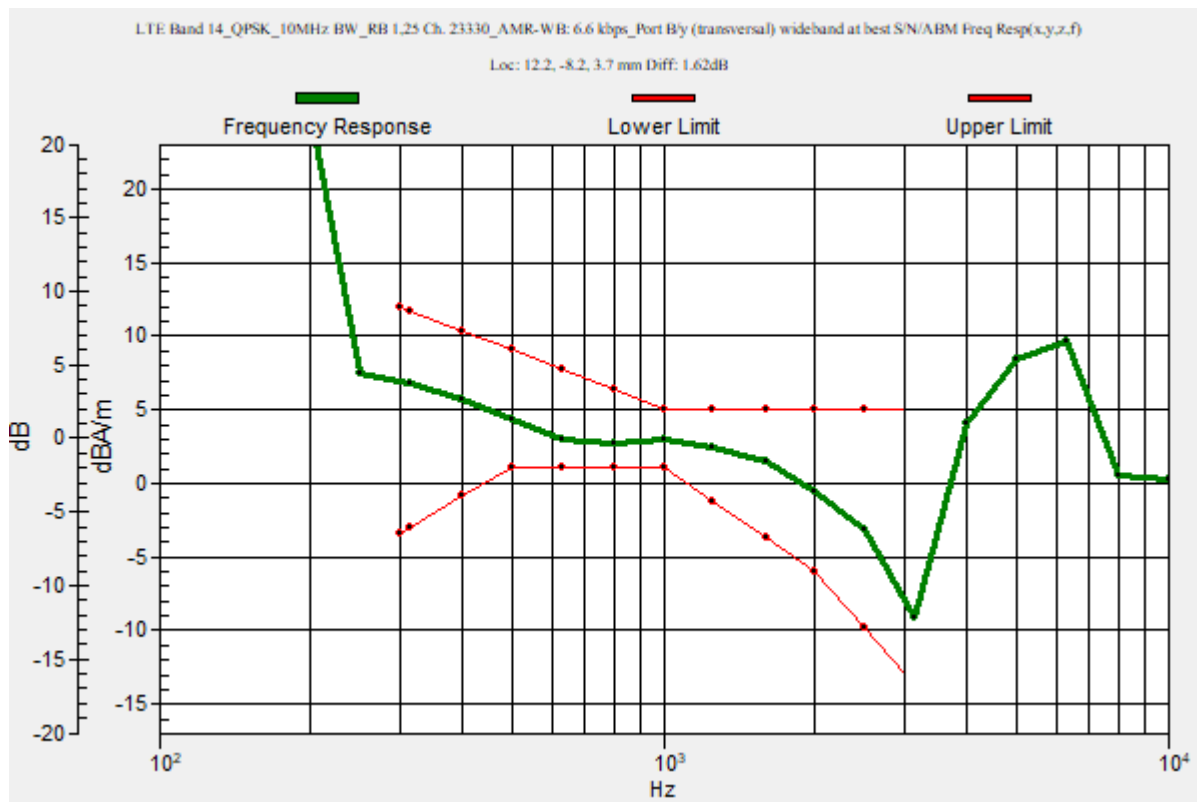
Category	Telephone parameters WD signal quality [(signal+noise)-to-noise ratio in decibels]
Category T1	0 dB to 10 dB
Category T2	10 dB to 20 dB
Category T3	20 dB to 30 dB
Category T4	> 30 dB

**Cursor:**

Diff = 1.62 dB

BWC Factor = 10.80 dB

Location: 12.2, -8.2, 3.7 mm



### LTE Band 14

Communication System: UID 0, 1@LTE (FDD) (0); Frequency: 793 MHz; Duty Cycle: 1:1

Phantom section: TCoil Section

DASY5 Configuration:

- Probe: AM1DV3 - 3083; ; Calibrated: 1/10/2022
- Sensor-Surface: 0mm (Fix Surface)
- Electronics: DAE4 Sn1357; Calibrated: 1/11/2022
- Phantom: HAC Test Arch with AMCC; Type: SD HAC P01 BB
- Measurement SW: DASY52, Version 52.10 (4);SEMCAD X Version 14.6.14 (7483)

### T-Coil scan (scan for ANSI C63.19 2011 compliance)/LTE Band 14\_QPSK\_10MHz BW\_RB 1,25 Ch. 23330\_AMR-WB: 6.6 kbps\_Port B/y (transversal) 4.2mm 50 x 50/ABM Interpolated SNR(x,y,z) (121x121x1): Interpolated grid: dx=1.000 mm, dy=1.000 mm

Signal Type: Audio File (.wav) 48k\_voice\_1kHz\_1s.wav

Output Gain: 24.02

Measure Window Start: 300ms

Measure Window Length: 1000ms

BWC applied: 0.16 dB

Device Reference Point: 0, 0, -6.3 mm

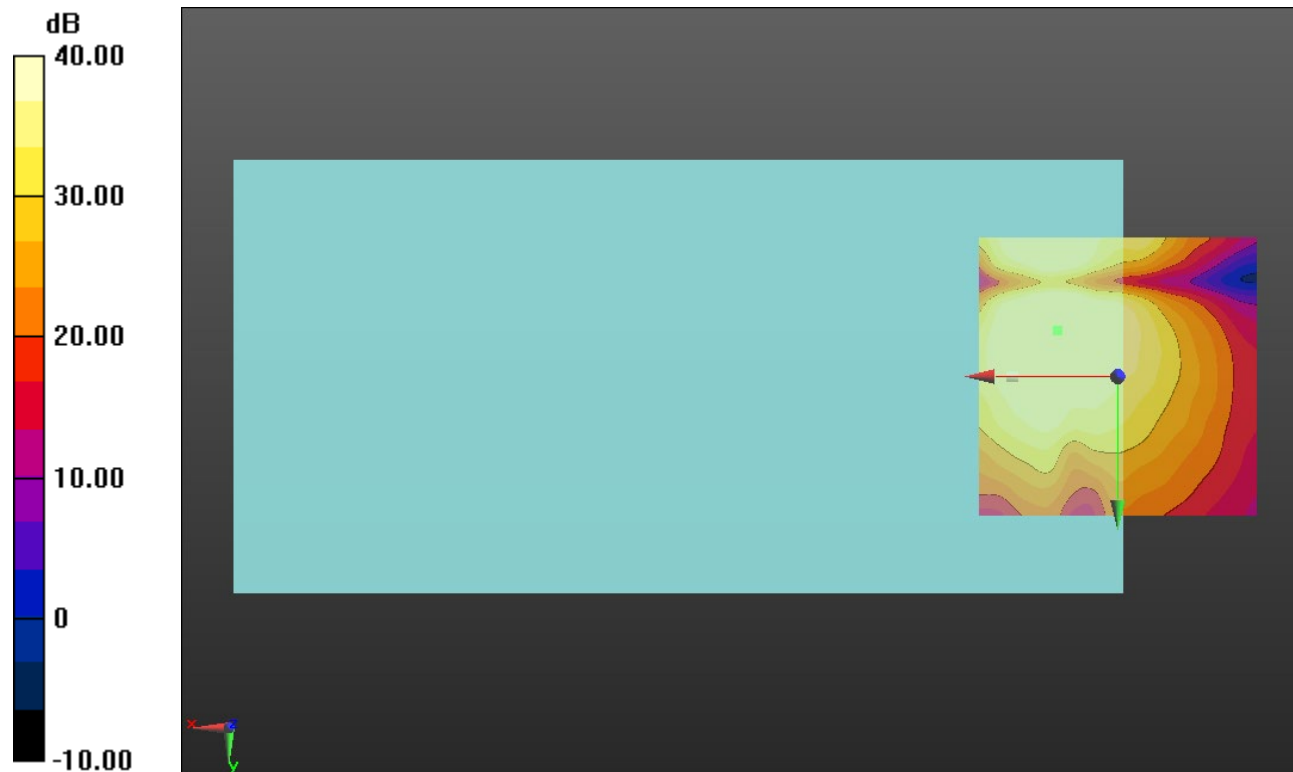
#### Cursor:

ABM1/ABM2 = 50.22 dB

ABM1 comp = 1.25 dBA/m

BWC Factor = 0.16 dB

Location: 10.8, -8.3, 3.7 mm



0 dB = 1.000 = 0.00 dB



### LTE Band 17

Communication System: UID 0, 1@LTE (FDD) (0); Frequency: 710 MHz;Duty Cycle: 1:1

### T-Coil scan (scan for ANSI C63.19 2011 compliance)/LTE Band 17\_QPSK\_10MHz BW\_RB 1,25 Ch. 23790\_AMR-WB: 6.6 kbps\_Port B/y (transversal) wideband at best

**S/N/ABM Freq Resp(x,y,z,f) (1x1x1):** Measurement grid: dx=10mm, dy=10mm

Signal Type: Audio File (.wav) 48k\_voice\_300-3000\_2s.wav

Output Gain: 47.1

Measure Window Start: 300ms

Measure Window Length: 2000ms

BWC applied: 10.80 dB

Device Reference Point: 0, 0, -6.3 mm

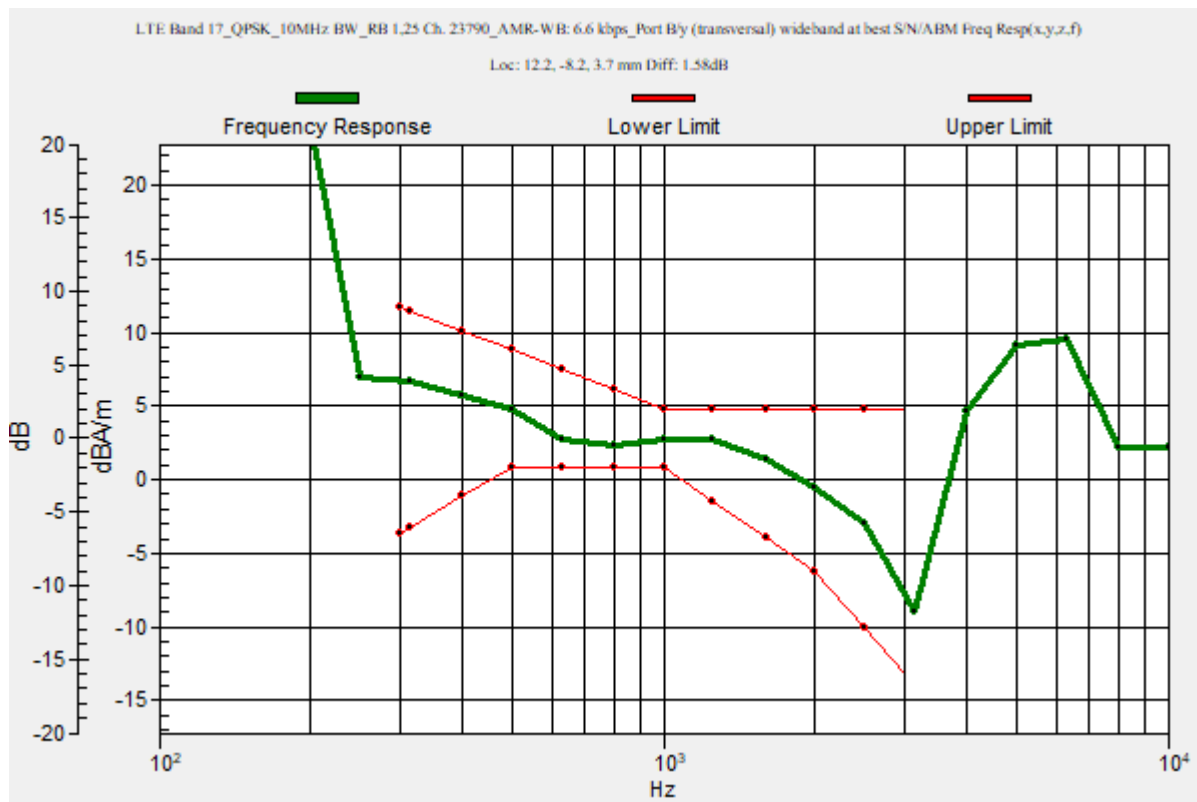
Category	Telephone parameters WD signal quality [(signal+noise)-to-noise ratio in decibels]
Category T1	0 dB to 10 dB
Category T2	10 dB to 20 dB
Category T3	20 dB to 30 dB
Category T4	> 30 dB

**Cursor:**

Diff = 1.58 dB

BWC Factor = 10.80 dB

Location: 12.2, -8.2, 3.7 mm



## LTE Band 17

Communication System: UID 0, 1@LTE (FDD) (0); Frequency: 710 MHz; Duty Cycle: 1:1

Phantom section: TCoil Section

DASY5 Configuration:

- Probe: AM1DV3 - 3083; ; Calibrated: 1/10/2022
- Sensor-Surface: 0mm (Fix Surface)
- Electronics: DAE4 Sn1357; Calibrated: 1/11/2022
- Phantom: HAC Test Arch with AMCC; Type: SD HAC P01 BB
- Measurement SW: DASY52, Version 52.10 (4);SEMCAD X Version 14.6.14 (7483)

### T-Coil scan (scan for ANSI C63.19 2011 compliance)/LTE Band 17\_QPSK\_10MHz BW\_RB 1,25 Ch. 23790\_AMR-WB: 6.6 kbps\_Port B/y (transversal) Single Point/ABM

**SNR(x,y,z) (1x1x1):** Measurement grid: dx=10mm, dy=10mm

Signal Type: Audio File (.wav) 48k\_voice\_1kHz\_1s.wav

Output Gain: 24.02

Measure Window Start: 300ms

Measure Window Length: 1000ms

BWC applied: 0.16 dB

Device Reference Point: 0, 0, -6.3 mm

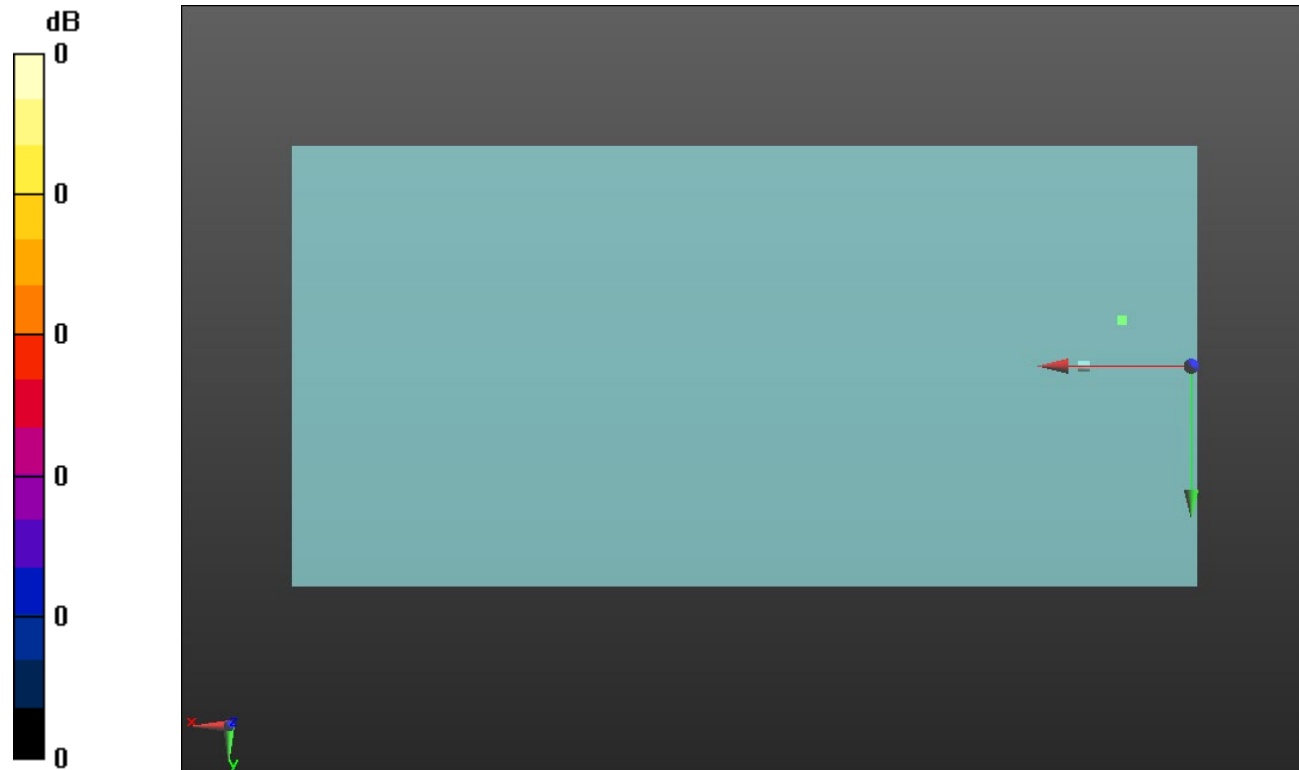
#### Cursor:

ABM1/ABM2 = 49.45 dB

ABM1 comp = 1.38 dBA/m

BWC Factor = 0.16 dB

Location: 12.2, -8.2, 3.7 mm



0 dB = 1.000 = 0.00 dB

### LTE Band 25

Communication System: UID 0, 1@LTE (FDD) (0); Frequency: 1882.5 MHz;Duty Cycle: 1:1

### T-Coil scan (scan for ANSI C63.19 2011 compliance)/LTE Band 25\_QPSK\_20MHz BW\_RB 1,49\_Ch. 26365\_AMR-WB: 6.6 kbps\_Port B/y (transversal) wideband at best S/N/ABM Freq Resp(x,y,z,f) (1x1x1):

Measurement grid: dx=10mm, dy=10mm

Signal Type: Audio File (.wav) 48k\_voice\_300-3000\_2s.wav

Output Gain: 47.1

Measure Window Start: 300ms

Measure Window Length: 2000ms

BWC applied: 10.80 dB

Device Reference Point: 0, 0, -6.3 mm

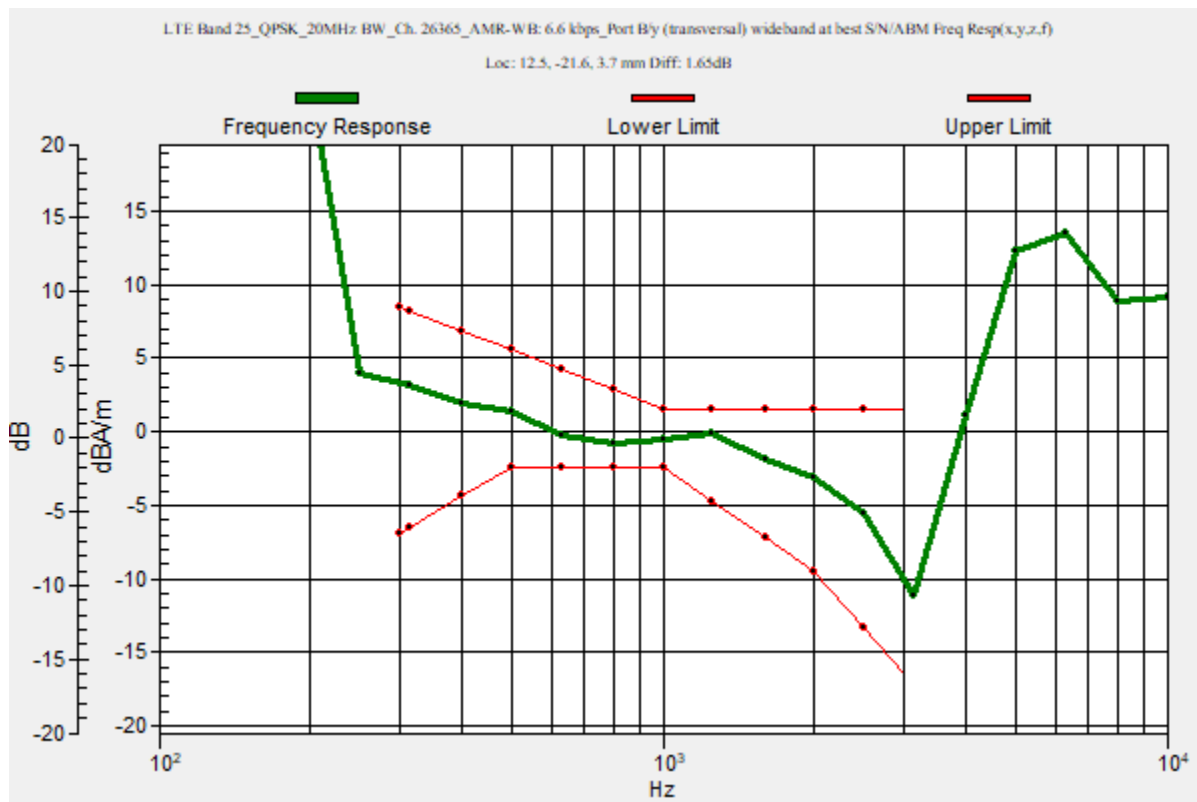
Category	Telephone parameters WD signal quality [(signal+noise)-to-noise ratio in decibels]
Category T1	0 dB to 10 dB
Category T2	10 dB to 20 dB
Category T3	20 dB to 30 dB
Category T4	> 30 dB

**Cursor:**

Diff = 1.65 dB

BWC Factor = 10.80 dB

Location: 12.5, -21.6, 3.7 mm



## LTE Band 25

Communication System: UID 0, 1@LTE (FDD) (0); Frequency: 1882.5 MHz; Duty Cycle: 1:1

Phantom section: TCoil Section

DASY5 Configuration:

- Probe: AM1DV3 - 3083; ; Calibrated: 1/10/2022
- Sensor-Surface: 0mm (Fix Surface)
- Electronics: DAE4 Sn1357; Calibrated: 1/11/2022
- Phantom: HAC Test Arch with AMCC; Type: SD HAC P01 BB
- Measurement SW: DASY52, Version 52.10 (4);SEMCAD X Version 14.6.14 (7483)

**T-Coil scan (scan for ANSI C63.19 2011 compliance)/LTE Band 25\_QPSK\_20MHz  
 BW\_RB 1,49\_Ch. 26365\_AMR-WB: 6.6 kbps\_Port B/y (transversal) 4.2mm 50 x 50/ABM  
 Interpolated SNR(x,y,z) (121x121x1):** Interpolated grid: dx=1.000 mm, dy=1.000 mm

Signal Type: Audio File (.wav) 48k\_voice\_1kHz\_1s.wav

Output Gain: 24.02

Measure Window Start: 300ms

Measure Window Length: 1000ms

BWC applied: 0.16 dB

Device Reference Point: 0, 0, -6.3 mm

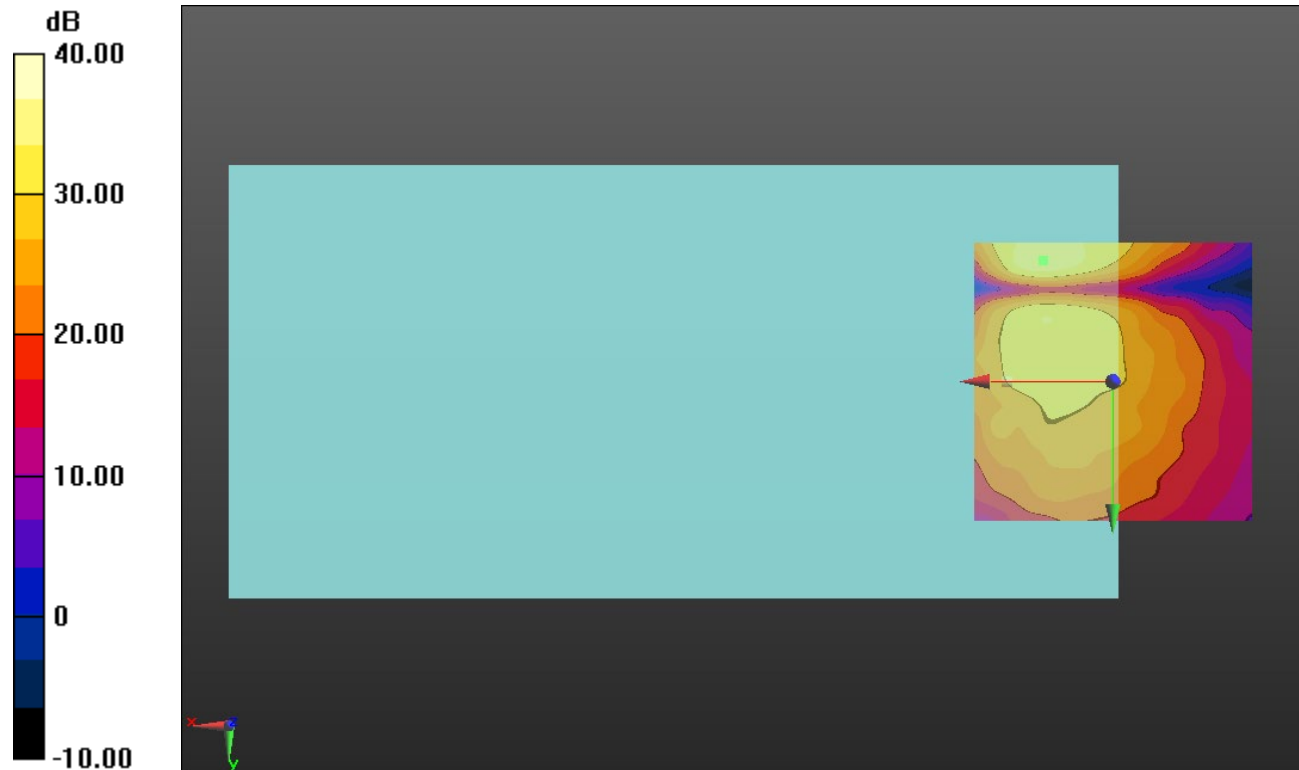
**Cursor:**

ABM1/ABM2 = 35.48 dB

ABM1 comp = -1.53 dBA/m

BWC Factor = 0.16 dB

Location: 12.5, -21.7, 3.7 mm



0 dB = 1.000 = 0.00 dB

### LTE Band 26

Communication System: UID 0, 1@LTE (FDD) (0); Frequency: 831.5 MHz;Duty Cycle: 1:1

### T-Coil scan (scan for ANSI C63.19 2011 compliance)/LTE Band 26\_QPSK\_10MHz BW\_RB 1,25 Ch. 26865\_AMR-WB: 6.6 kbps\_Port B/y (transversal) wideband at best

**S/N/ABM Freq Resp(x,y,z,f) (1x1x1):** Measurement grid: dx=10mm, dy=10mm

Signal Type: Audio File (.wav) 48k\_voice\_300-3000\_2s.wav

Output Gain: 47.1

Measure Window Start: 300ms

Measure Window Length: 2000ms

BWC applied: 10.80 dB

Device Reference Point: 0, 0, -6.3 mm

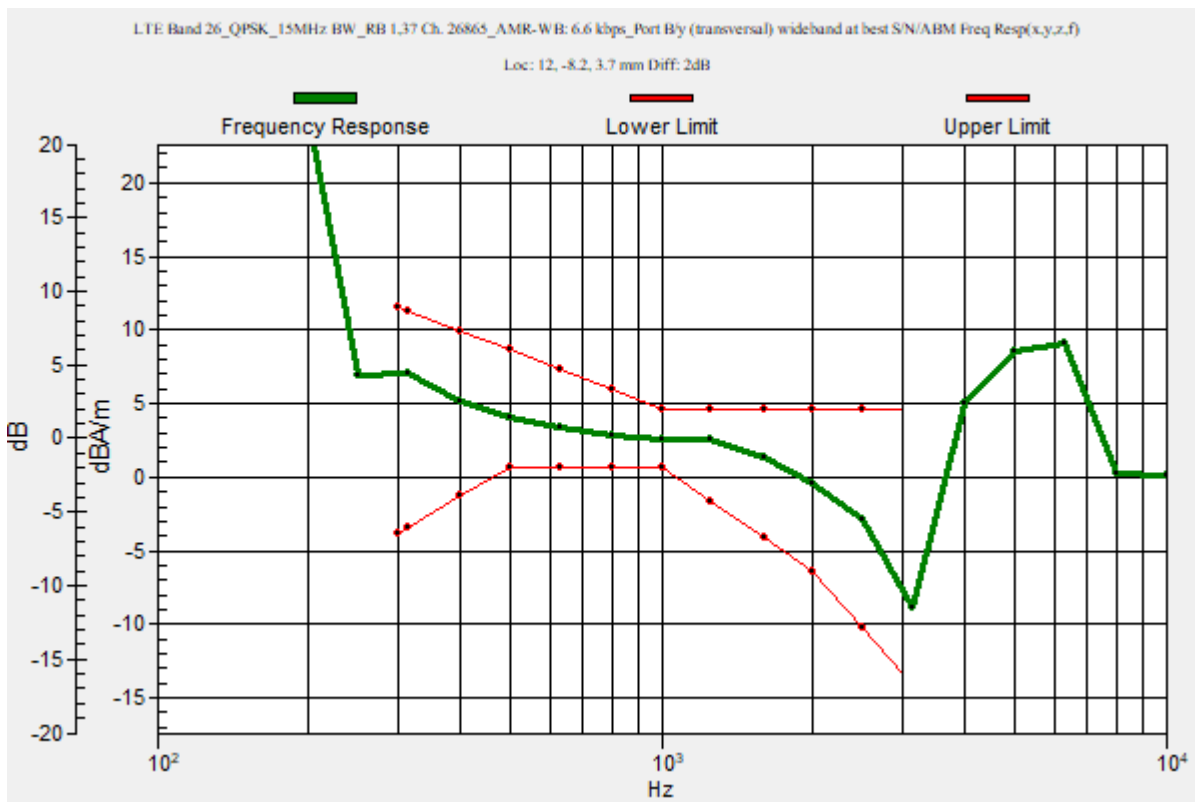
Category	Telephone parameters WD signal quality [(signal+noise)-to-noise ratio in decibels]
Category T1	0 dB to 10 dB
Category T2	10 dB to 20 dB
Category T3	20 dB to 30 dB
Category T4	> 30 dB

**Cursor:**

Diff = 2.00 dB

BWC Factor = 10.80 dB

Location: 12, -8.2, 3.7 mm



## LTE Band 26

Communication System: UID 0, 1@LTE (FDD) (0); Frequency: 831.5 MHz; Duty Cycle: 1:1

Phantom section: TCoil Section

DASY5 Configuration:

- Probe: AM1DV3 - 3083; ; Calibrated: 1/10/2022
- Sensor-Surface: 0mm (Fix Surface)
- Electronics: DAE4 Sn1357; Calibrated: 1/11/2022
- Phantom: HAC Test Arch with AMCC; Type: SD HAC P01 BB
- Measurement SW: DASY52, Version 52.10 (4);SEMCAD X Version 14.6.14 (7483)

### T-Coil scan (scan for ANSI C63.19 2011 compliance)/LTE Band 26\_QPSK\_10MHz BW\_RB 1,25 Ch. 26865\_AMR-WB: 6.6 kbps\_Port B/y (transversal) Single Point/ABM Interpolated SNR(x,y,z) (121x121x1): Interpolated grid: dx=1.000 mm, dy=1.000 mm

Signal Type: Audio File (.wav) 48k\_voice\_1kHz\_1s.wav

Output Gain: 24.02

Measure Window Start: 300ms

Measure Window Length: 1000ms

BWC applied: 0.16 dB

Device Reference Point: 0, 0, -6.3 mm

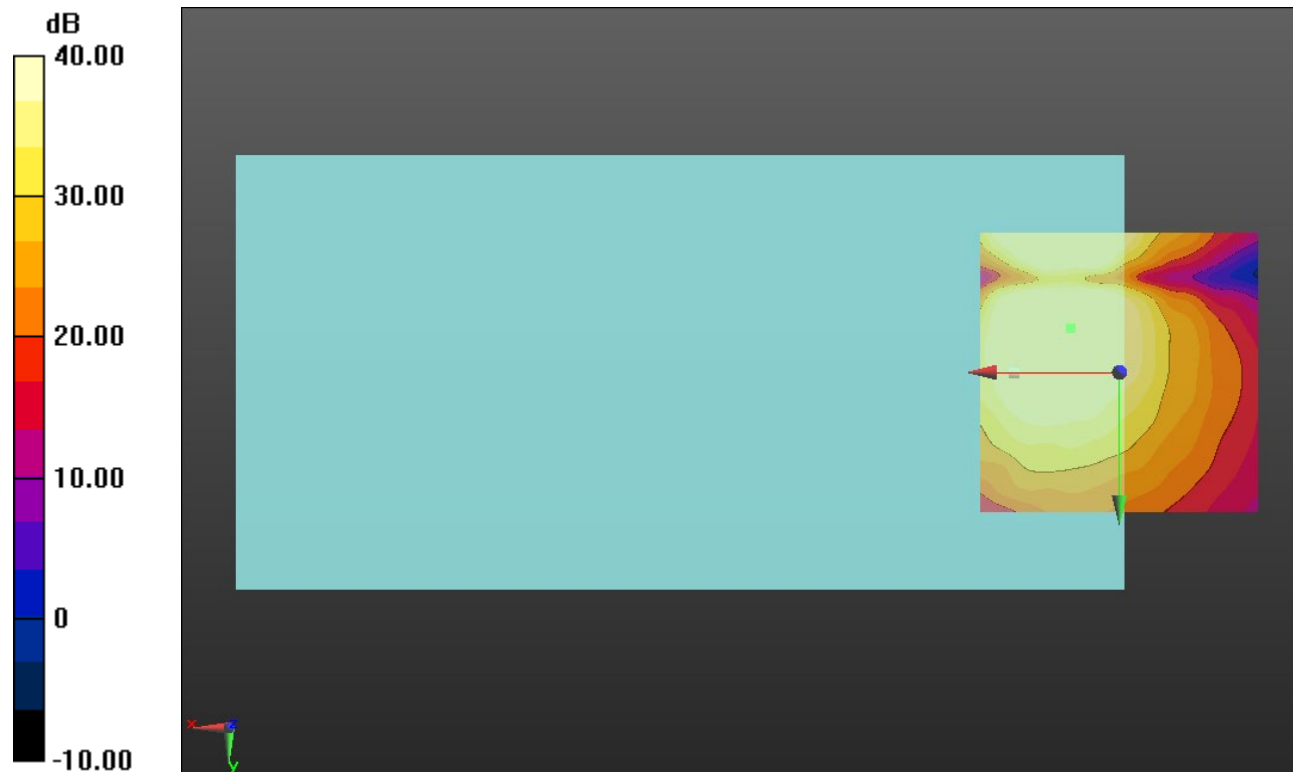
#### Cursor:

ABM1/ABM2 = 50.46 dB

ABM1 comp = -0.10 dBA/m

BWC Factor = 0.16 dB

Location: 8.8, -7.9, 3.7 mm



0 dB = 1.000 = 0.00 dB

### LTE Band 30

Communication System: UID 0, 1@LTE (FDD) (0); Frequency: 2310 MHz;Duty Cycle: 1:1

### T-Coil scan (scan for ANSI C63.19 2011 compliance)/LTE Band 30\_QPSK\_10MHz BW\_RB 1,25 Ch. 27710\_AMR-WB: 6.6 kbps\_Port B/y (transversal) wideband at best

**S/N/ABM Freq Resp(x,y,z,f) (1x1x1):** Measurement grid: dx=10mm, dy=10mm

Signal Type: Audio File (.wav) 48k\_voice\_300-3000\_2s.wav

Output Gain: 47.1

Measure Window Start: 300ms

Measure Window Length: 2000ms

BWC applied: 10.80 dB

Device Reference Point: 0, 0, -6.3 mm

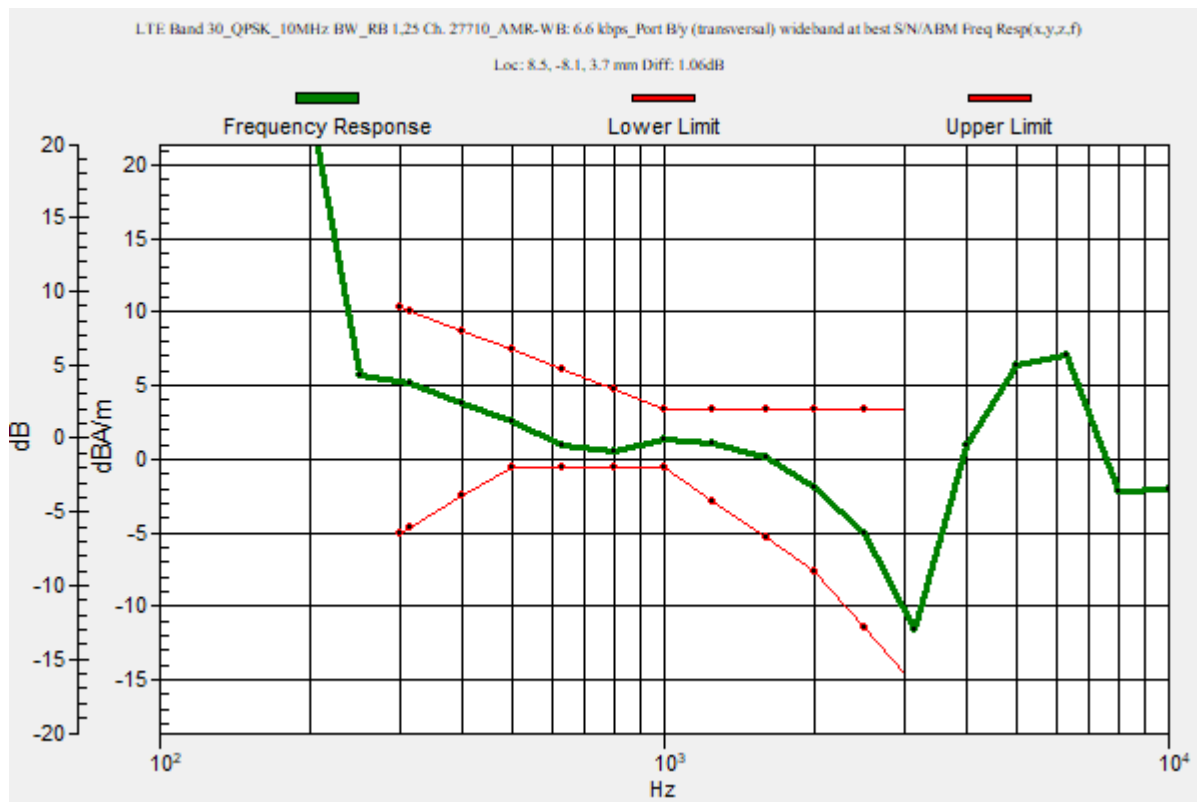
Category	Telephone parameters WD signal quality [(signal+noise)-to-noise ratio in decibels]
Category T1	0 dB to 10 dB
Category T2	10 dB to 20 dB
Category T3	20 dB to 30 dB
Category T4	> 30 dB

**Cursor:**

Diff = 1.06 dB

BWC Factor = 10.80 dB

Location: 8.5, -8.1, 3.7 mm



### LTE Band 30

Communication System: UID 0, 1@LTE (FDD) (0); Frequency: 2310 MHz; Duty Cycle: 1:1

Phantom section: TCoil Section

DASY5 Configuration:

- Probe: AM1DV3 - 3083; ; Calibrated: 1/10/2022
- Sensor-Surface: 0mm (Fix Surface)
- Electronics: DAE4 Sn1357; Calibrated: 1/11/2022
- Phantom: HAC Test Arch with AMCC; Type: SD HAC P01 BB
- Measurement SW: DASY52, Version 52.10 (4);SEMCAD X Version 14.6.14 (7483)

### T-Coil scan (scan for ANSI C63.19 2011 compliance)/LTE Band 30\_QPSK\_10MHz BW\_RB 1,25 Ch. 27710\_AMR-WB: 6.6 kbps\_Port B/y (transversal) 4.2mm 50 x 50/ABM Interpolated SNR(x,y,z) (121x121x1): Interpolated grid: dx=1.000 mm, dy=1.000 mm

Signal Type: Audio File (.wav) 48k\_voice\_1kHz\_1s.wav

Output Gain: 24.02

Measure Window Start: 300ms

Measure Window Length: 1000ms

BWC applied: 0.16 dB

Device Reference Point: 0, 0, -6.3 mm

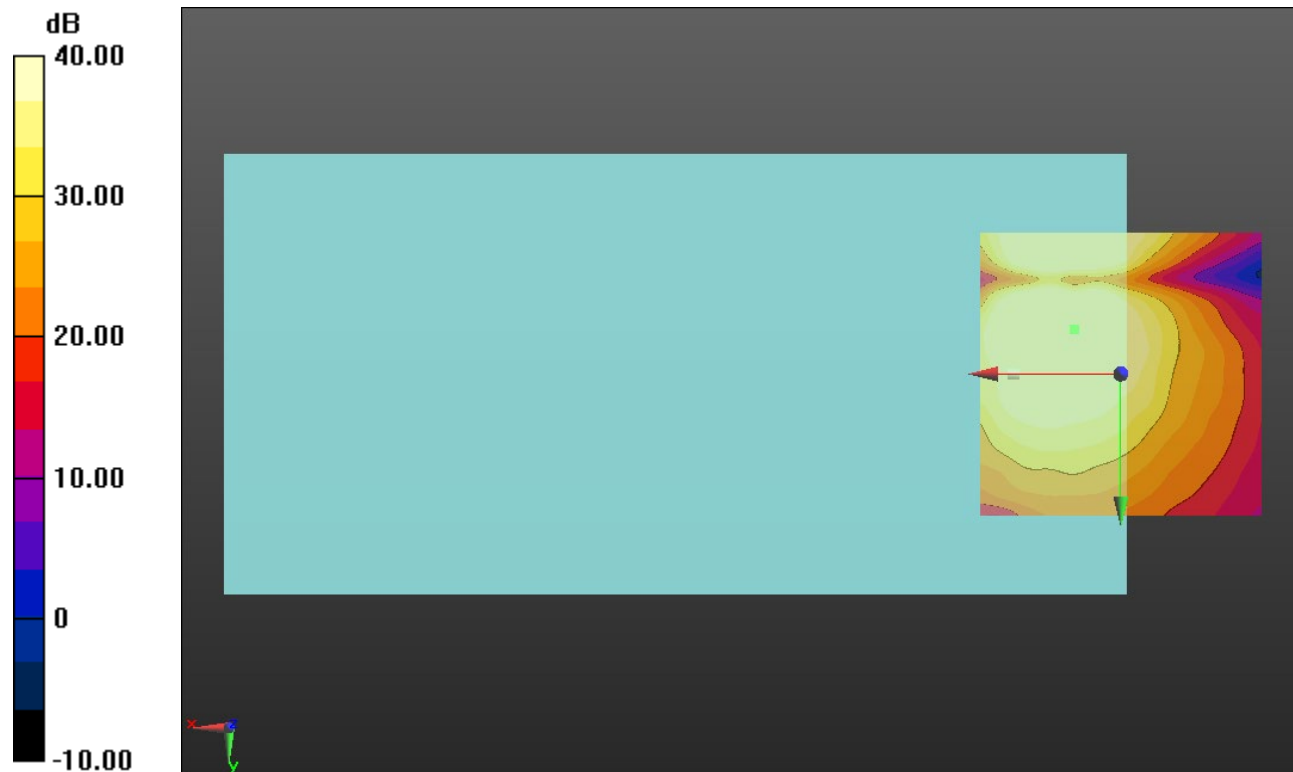
#### Cursor:

ABM1/ABM2 = 51.74 dB

ABM1 comp = -0.21 dBA/m

BWC Factor = 0.16 dB

Location: 8.3, -7.9, 3.7 mm



0 dB = 1.000 = 0.00 dB



### LTE Band 41

Communication System: UID 0, 1@LTE (TDD) (0); Frequency: 2680 MHz;Duty Cycle: 1:1.59956

### T-Coil scan (scan for ANSI C63.19 2011 compliance)/LTE Band 41\_QPSK\_20MHz BW\_RB 100,0 Ch. 41490\_AMR-WB: 23.85 kbps\_Port B/y (transversal) wideband at best

**S/N/ABM Freq Resp(x,y,z,f) (1x1x1):** Measurement grid: dx=10mm, dy=10mm

Signal Type: Audio File (.wav) 48k\_voice\_300-3000\_2s.wav

Output Gain: 47.1

Measure Window Start: 300ms

Measure Window Length: 2000ms

BWC applied: 10.80 dB

Device Reference Point: 0, 0, -6.3 mm

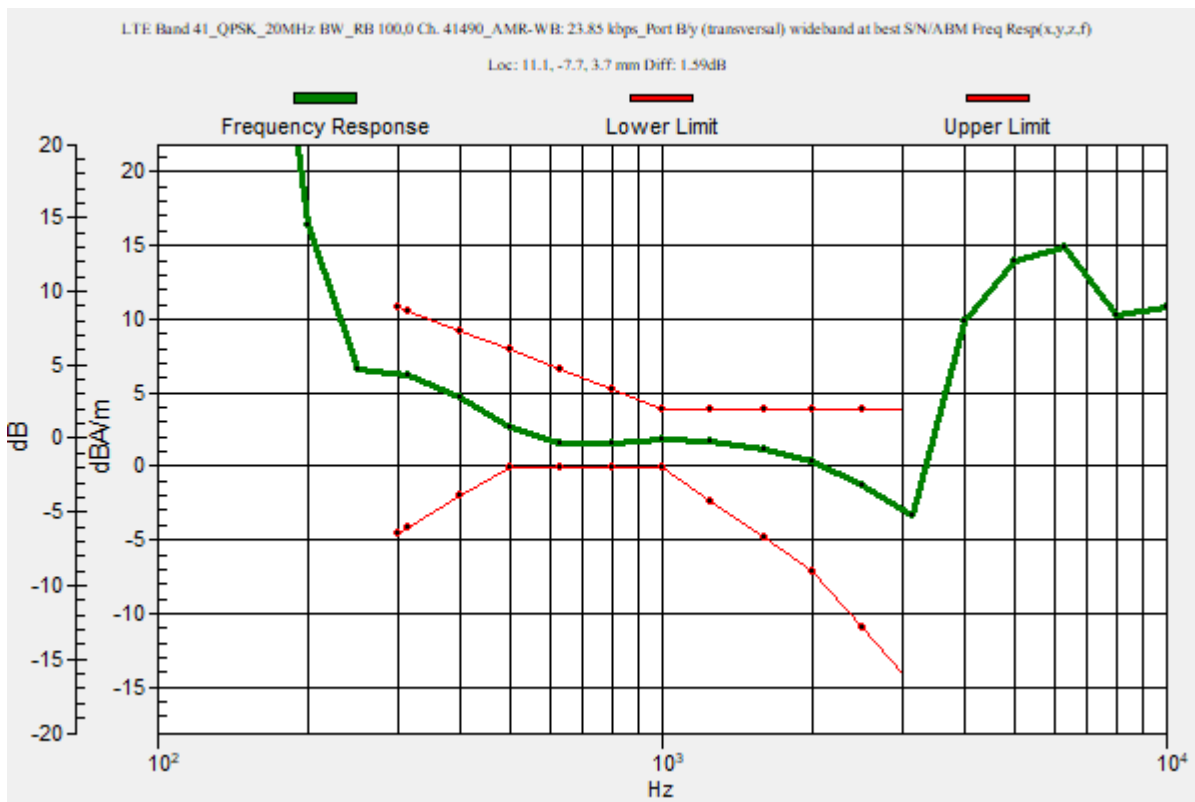
Category	Telephone parameters WD signal quality [(signal+noise)-to-noise ratio in decibels]
Category T1	0 dB to 10 dB
Category T2	10 dB to 20 dB
Category T3	20 dB to 30 dB
Category T4	> 30 dB

**Cursor:**

Diff = 1.59 dB

BWC Factor = 10.80 dB

Location: 11.1, -7.7, 3.7 mm



## LTE Band 41

Communication System: UID 0, 1@LTE (TDD) (0); Frequency: 2680 MHz; Duty Cycle: 1:1.59956

Phantom section: TCoil Section

DASY5 Configuration:

- Probe: AM1DV3 - 3083; ; Calibrated: 1/10/2022
- Sensor-Surface: 0mm (Fix Surface)
- Electronics: DAE4 Sn1357; Calibrated: 1/11/2022
- Phantom: HAC Test Arch with AMCC; Type: SD HAC P01 BB
- Measurement SW: DASY52, Version 52.10 (4);SEMCAD X Version 14.6.14 (7483)

### T-Coil scan (scan for ANSI C63.19 2011 compliance)/LTE Band 41\_QPSK\_20MHz BW\_RB 100,0 Ch. 41490\_AMR-WB: 23.85 kbps\_Port B/y (transversal) Single Point/ABM

**SNR(x,y,z) (1x1x1):** Measurement grid: dx=10mm, dy=10mm

Signal Type: Audio File (.wav) 48k\_voice\_1kHz\_1s.wav

Output Gain: 24.02

Measure Window Start: 300ms

Measure Window Length: 1000ms

BWC applied: 0.16 dB

Device Reference Point: 0, 0, -6.3 mm

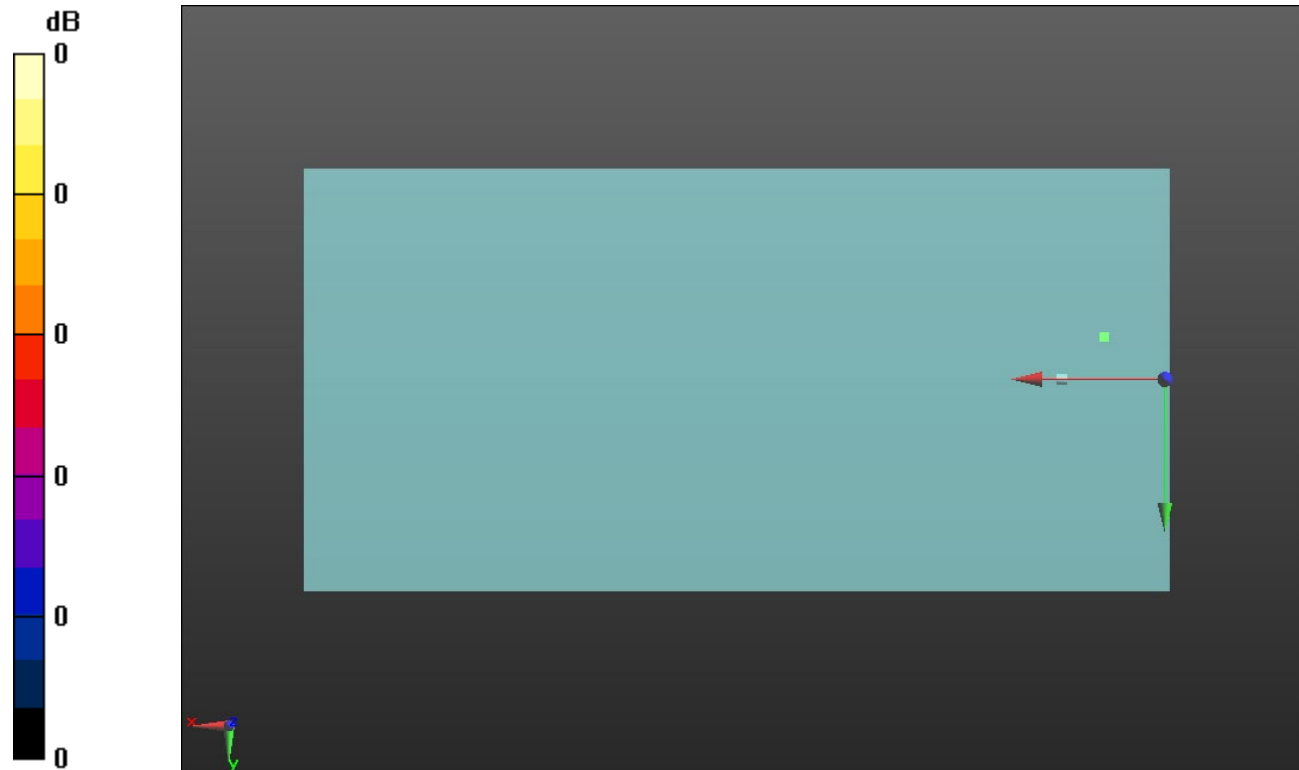
#### Cursor:

ABM1/ABM2 = 35.35 dB

ABM1 comp = 1.39 dBA/m

BWC Factor = 0.16 dB

Location: 11.1, -7.7, 3.7 mm



0 dB = 1.000 = 0.00 dB

### LTE Band 48

Communication System: UID 0, 1@LTE (TDD) (0); Frequency: 3690 MHz;Duty Cycle: 1:1.59956

### T-Coil scan (scan for ANSI C63.19 2011 compliance)/LTE Band 48\_QPSK\_20MHz BW\_RB 100,0 Ch. 56640\_AMR-WB: 23.85 kbps\_Port B/y (transversal) wideband at best

**S/N/ABM Freq Resp(x,y,z,f) (1x1x1):** Measurement grid: dx=10mm, dy=10mm

Signal Type: Audio File (.wav) 48k\_voice\_300-3000\_2s.wav

Output Gain: 47.1

Measure Window Start: 300ms

Measure Window Length: 2000ms

BWC applied: 10.80 dB

Device Reference Point: 0, 0, -6.3 mm

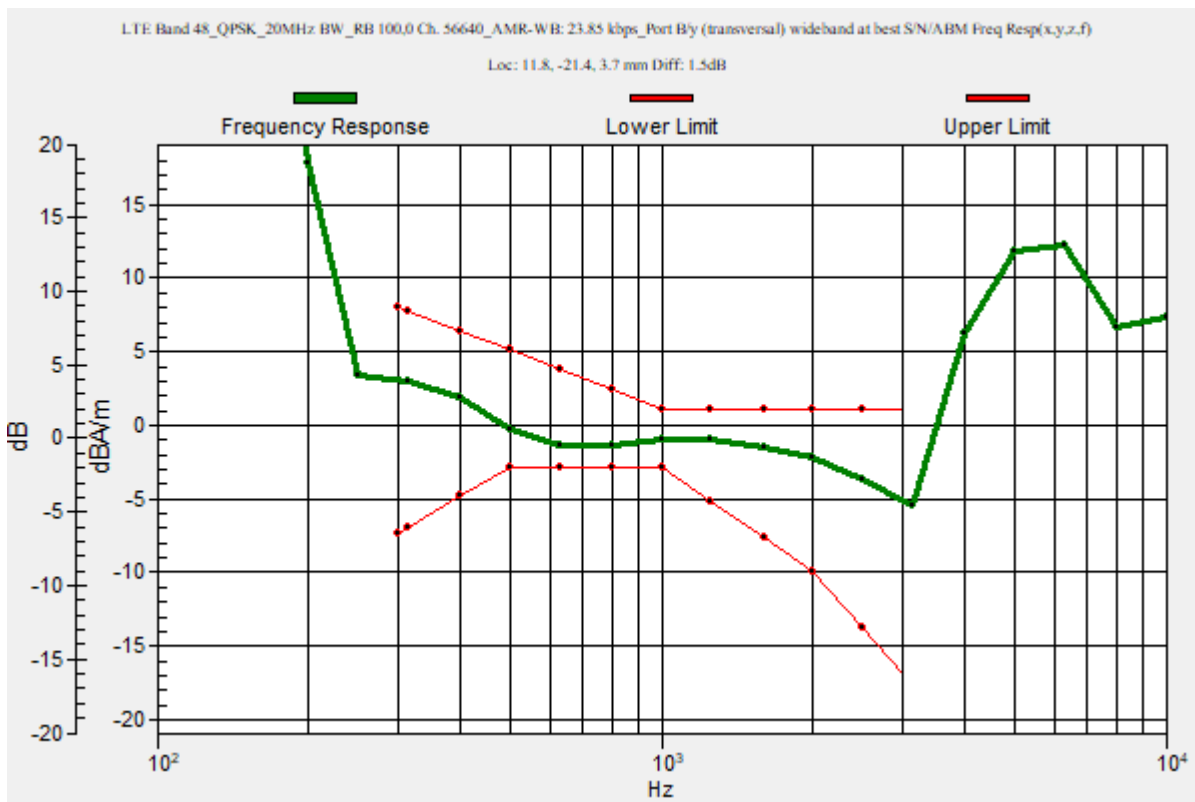
Category	Telephone parameters WD signal quality [(signal+noise)-to-noise ratio in decibels]
Category T1	0 dB to 10 dB
Category T2	10 dB to 20 dB
Category T3	20 dB to 30 dB
Category T4	> 30 dB

**Cursor:**

Diff = 1.50 dB

BWC Factor = 10.80 dB

Location: 11.8, -21.4, 3.7 mm



### LTE Band 48

Communication System: UID 0, 1@LTE (TDD) (0); Frequency: 3690 MHz; Duty Cycle: 1:1.59956

Phantom section: TCoil Section

DASY5 Configuration:

- Probe: AM1DV3 - 3083; ; Calibrated: 1/10/2022
- Sensor-Surface: 0mm (Fix Surface)
- Electronics: DAE4 Sn1357; Calibrated: 1/11/2022
- Phantom: HAC Test Arch with AMCC; Type: SD HAC P01 BB
- Measurement SW: DASY52, Version 52.10 (4);SEMCAD X Version 14.6.14 (7483)

### T-Coil scan (scan for ANSI C63.19 2011 compliance)/LTE Band 48\_QPSK\_20MHz BW\_RB 100,0 Ch. 56640\_AMR-WB: 23.85 kbps\_Port B/y (transversal) 4.2mm 50 x 50/ABM Interpolated SNR(x,y,z) (121x121x1): Interpolated grid: dx=1.000 mm, dy=1.000 mm

Signal Type: Audio File (.wav) 48k\_voice\_1kHz\_1s.wav

Output Gain: 24.02

Measure Window Start: 300ms

Measure Window Length: 1000ms

BWC applied: 0.16 dB

Device Reference Point: 0, 0, -6.3 mm

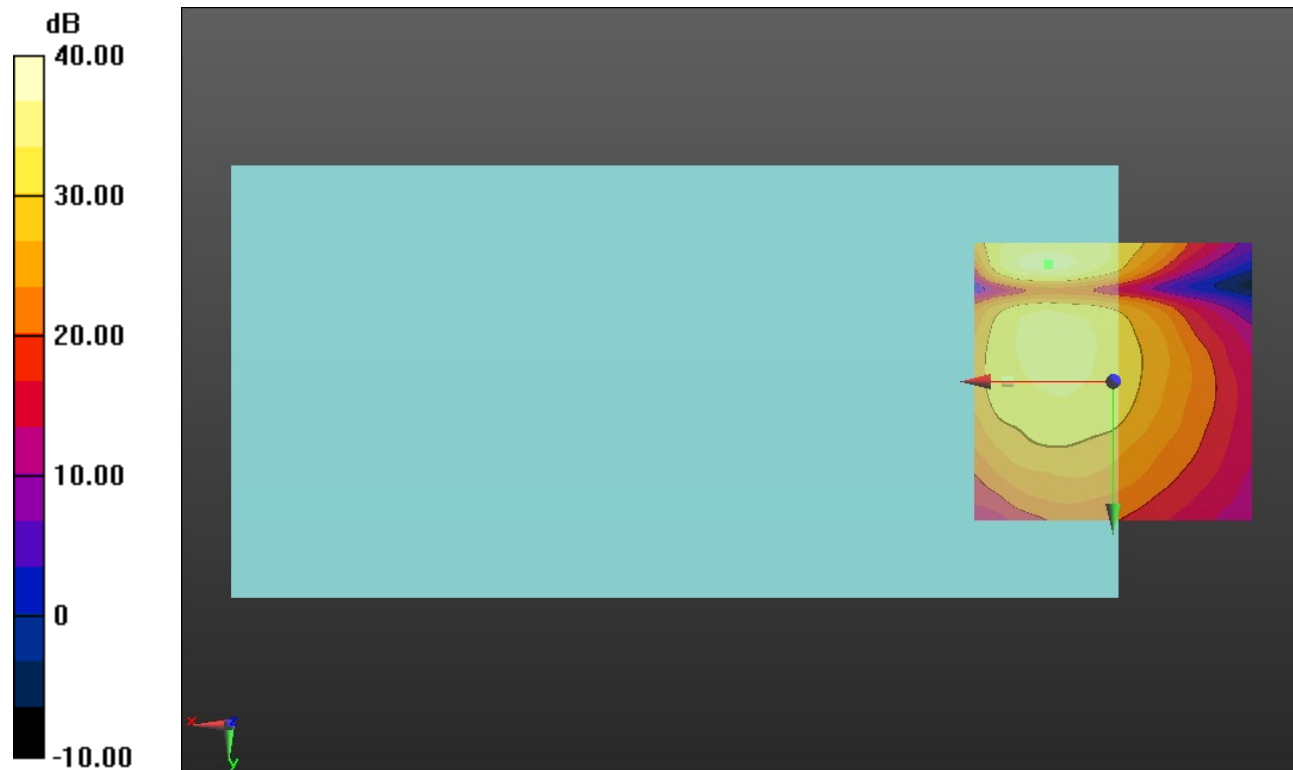
#### Cursor:

ABM1/ABM2 = 37.80 dB

ABM1 comp = -1.64 dBA/m

BWC Factor = 0.16 dB

Location: 11.7, -21.3, 3.7 mm



0 dB = 1.000 = 0.00 dB

### LTE Band 66

Communication System: UID 0, 1@LTE (FDD) (0); Frequency: 1732.5 MHz;Duty Cycle: 1:1

### T-Coil scan (scan for ANSI C63.19 2011 compliance)/LTE Band 66\_QPSK\_20MHz BW\_RB 1,49 Ch. 132322\_AMR-WB: 6.6 kbps\_Port B/y (transversal) wideband at best S/N/ABM Freq Resp(x,y,z,f) (1x1x1):

Measurement grid: dx=10mm, dy=10mm

Signal Type: Audio File (.wav) 48k\_voice\_300-3000\_2s.wav

Output Gain: 47.1

Measure Window Start: 300ms

Measure Window Length: 2000ms

BWC applied: 10.80 dB

Device Reference Point: 0, 0, -6.3 mm

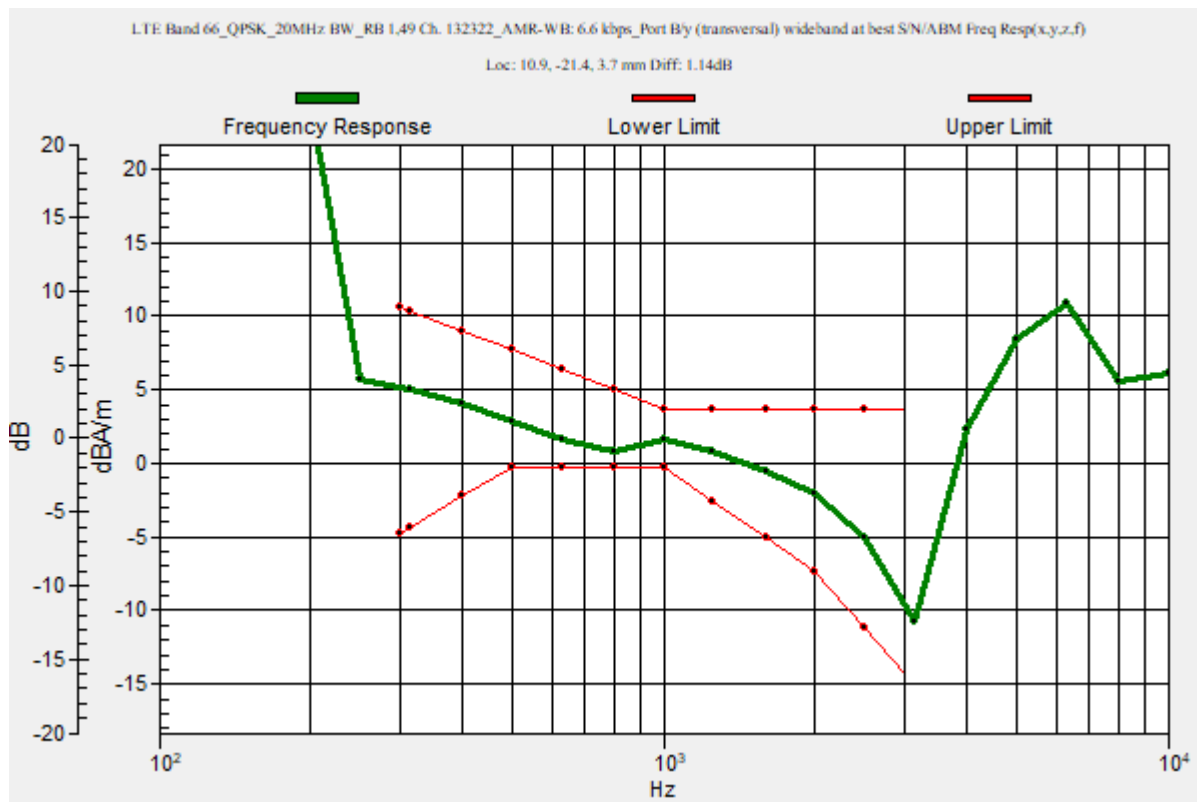
Category	Telephone parameters WD signal quality [(signal+noise)-to-noise ratio in decibels]
Category T1	0 dB to 10 dB
Category T2	10 dB to 20 dB
Category T3	20 dB to 30 dB
Category T4	> 30 dB

**Cursor:**

Diff = 1.14 dB

BWC Factor = 10.80 dB

Location: 10.9, -21.4, 3.7 mm



### LTE Band 66

Communication System: UID 0, 1@LTE (FDD) (0); Frequency: 1732.5 MHz; Duty Cycle: 1:1

Phantom section: TCoil Section

DASY5 Configuration:

- Probe: AM1DV3 - 3083; ; Calibrated: 1/10/2022
- Sensor-Surface: 0mm (Fix Surface)
- Electronics: DAE4 Sn1357; Calibrated: 1/11/2022
- Phantom: HAC Test Arch with AMCC; Type: SD HAC P01 BB
- Measurement SW: DASY52, Version 52.10 (4);SEMCAD X Version 14.6.14 (7483)

### T-Coil scan (scan for ANSI C63.19 2011 compliance)/LTE Band 66\_QPSK\_20MHz BW\_RB 1,49 Ch. 132322\_AMR-WB: 6.6 kbps\_Port B/y (transversal) Single Point/ABM

**SNR(x,y,z) (1x1x1):** Measurement grid: dx=10mm, dy=10mm

Signal Type: Audio File (.wav) 48k\_voice\_1kHz\_1s.wav

Output Gain: 24.02

Measure Window Start: 300ms

Measure Window Length: 1000ms

BWC applied: 0.16 dB

Device Reference Point: 0, 0, -6.3 mm

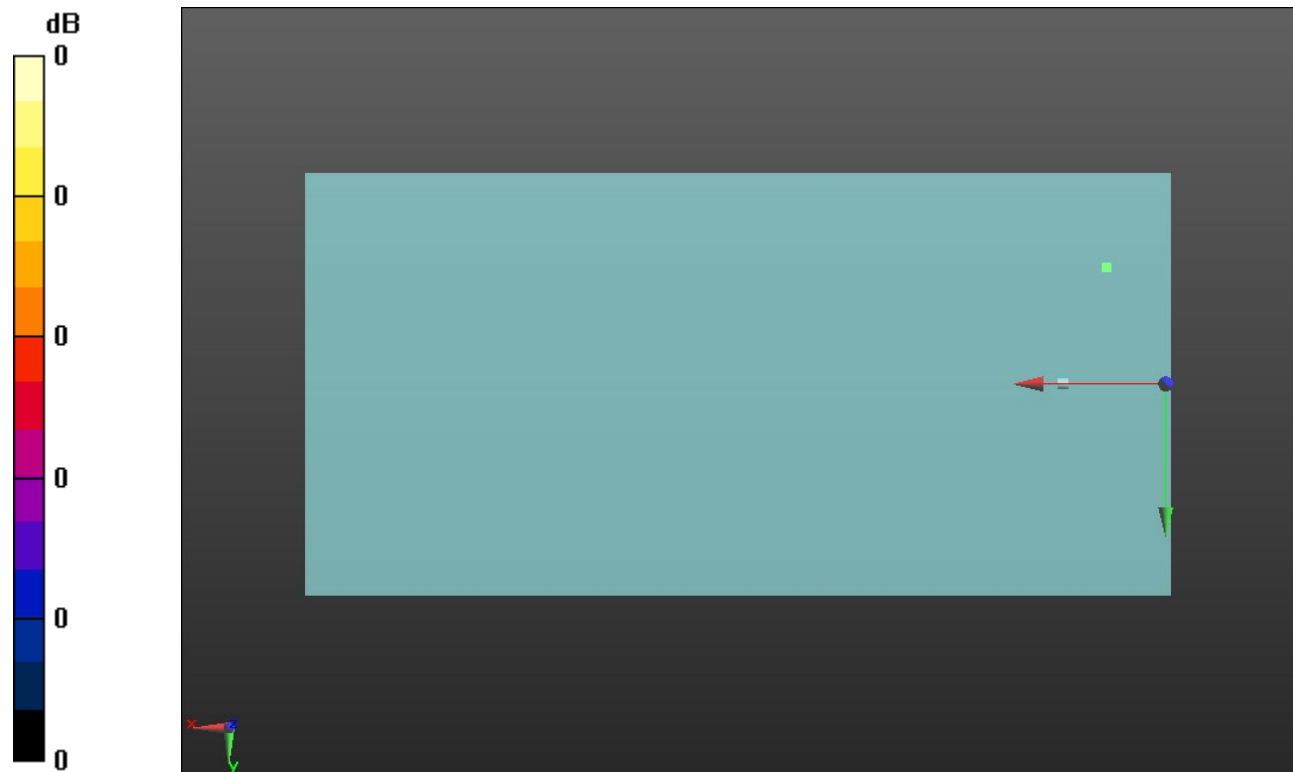
#### Cursor:

ABM1/ABM2 = 38.55 dB

ABM1 comp = -0.02 dBA/m

BWC Factor = 0.16 dB

Location: 10.9, -21.4, 3.7 mm



0 dB = 1.000 = 0.00 dB

### LTE Band 71

Communication System: UID 0, 1@LTE (FDD) (0); Frequency: 680.5 MHz;Duty Cycle: 1:1

### T-Coil scan (scan for ANSI C63.19 2011 compliance)/LTE Band 71\_QPSK\_20MHz BW\_RB 1,49 Ch. 133297\_AMR-WB: 6.6 kbps\_Port B/y (transversal) wideband at best S/N/ABM Freq Resp(x,y,z,f) (1x1x1):

Measurement grid: dx=10mm, dy=10mm

Signal Type: Audio File (.wav) 48k\_voice\_300-3000\_2s.wav

Output Gain: 47.1

Measure Window Start: 300ms

Measure Window Length: 2000ms

BWC applied: 10.80 dB

Device Reference Point: 0, 0, -6.3 mm

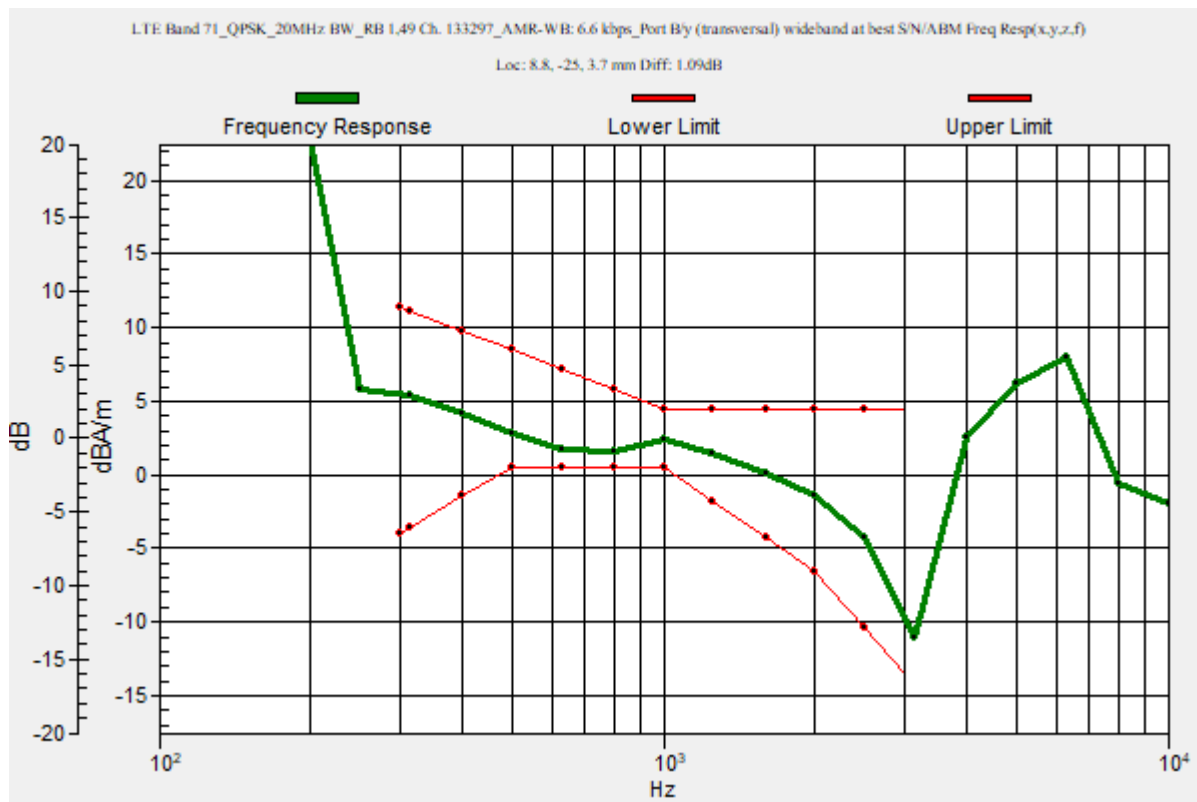
Category	Telephone parameters WD signal quality [(signal+noise)-to-noise ratio in decibels]
Category T1	0 dB to 10 dB
Category T2	10 dB to 20 dB
Category T3	20 dB to 30 dB
Category T4	> 30 dB

**Cursor:**

Diff = 1.09 dB

BWC Factor = 10.80 dB

Location: 8.8, -25, 3.7 mm



### LTE Band 71

Communication System: UID 0, 1@LTE (FDD) (0); Frequency: 680.5 MHz; Duty Cycle: 1:1

Phantom section: TCoil Section

DASY5 Configuration:

- Probe: AM1DV3 - 3083; ; Calibrated: 1/10/2022
- Sensor-Surface: 0mm (Fix Surface)
- Electronics: DAE4 Sn1357; Calibrated: 1/11/2022
- Phantom: HAC Test Arch with AMCC; Type: SD HAC P01 BB
- Measurement SW: DASY52, Version 52.10 (4);SEMCAD X Version 14.6.14 (7483)

### T-Coil scan (scan for ANSI C63.19 2011 compliance)/LTE Band 71\_QPSK\_20MHz BW\_RB 1,49 Ch. 133297\_AMR-WB: 6.6 kbps\_Port B/y (transversal) 4.2mm 50 x 50/ABM Interpolated SNR(x,y,z) (121x121x1): Interpolated grid: dx=1.000 mm, dy=1.000 mm

Signal Type: Audio File (.wav) 48k\_voice\_1kHz\_1s.wav

Output Gain: 24.02

Measure Window Start: 300ms

Measure Window Length: 1000ms

BWC applied: 0.16 dB

Device Reference Point: 0, 0, -6.3 mm

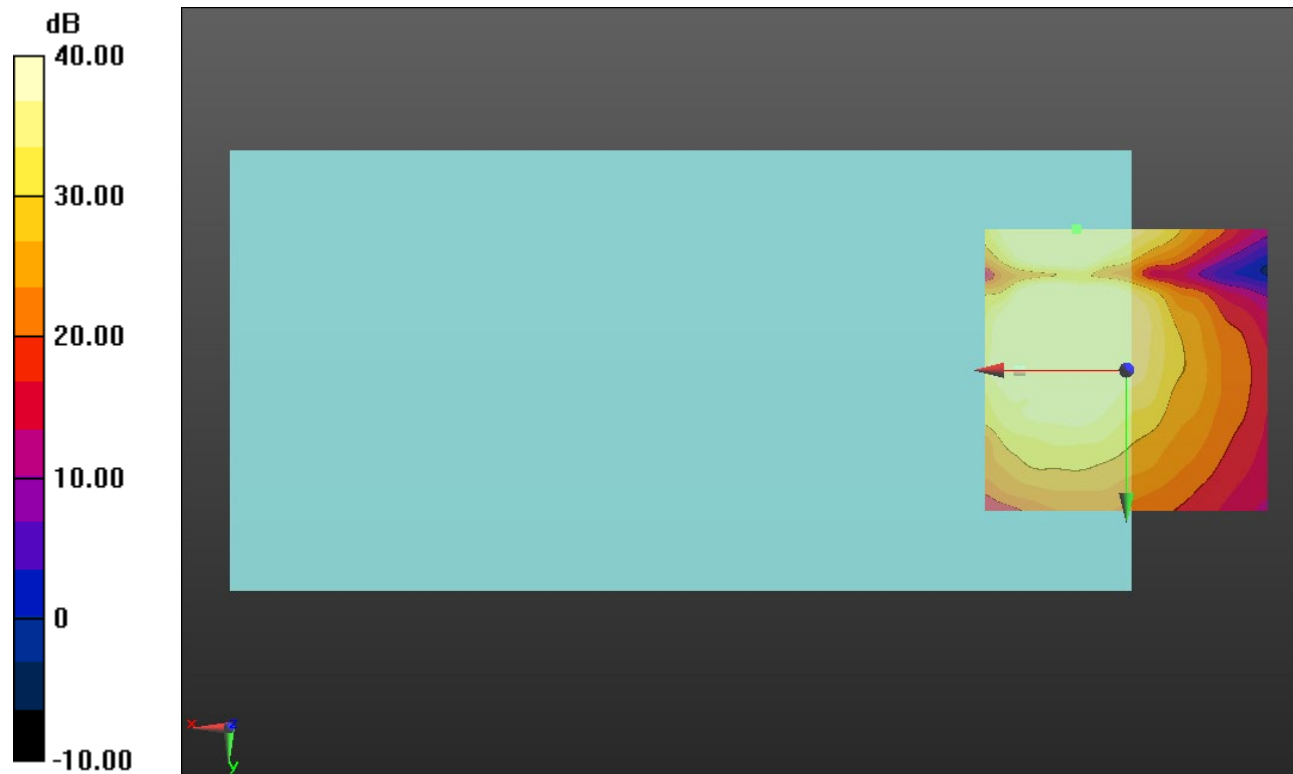
#### Cursor:

ABM1/ABM2 = 51.20 dB

ABM1 comp = 0.53 dBA/m

BWC Factor = 0.16 dB

Location: 8.8, -25, 3.7 mm



0 dB = 1.000 = 0.00 dB



### Wi-Fi 2.4 GHz

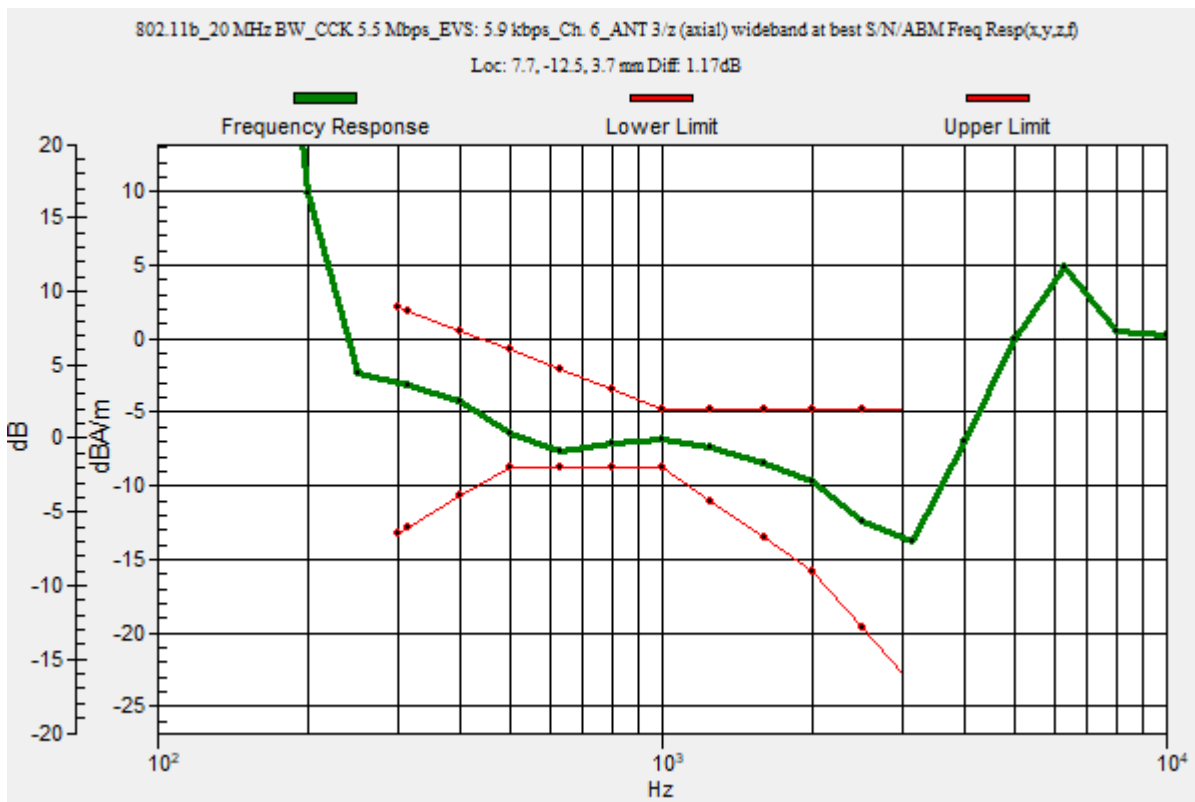
Communication System: UID 0, 1@IEEE 802.11b/g/n/ac/ax 2.4 GHz Band (0); Frequency: 2437 MHz;Duty Cycle: 1:1

### T-Coil scan (scan for ANSI C63.19 2011 compliance)/802.11b\_20 MHz BW\_CCK 5.5 Mbps\_EVS: 5.9 kbps\_Ch. 6\_ANT 3/z (axial) wideband at best S/N/ABM Freq Resp(x,y,z,f)

(1x1x1): Measurement grid: dx=10mm, dy=10mm  
 Signal Type: Audio File (.wav) 48k\_voice\_300-3000\_2s.wav  
 Output Gain: 29.72  
 Measure Window Start: 300ms  
 Measure Window Length: 2000ms  
 BWC applied: 10.80 dB  
 Device Reference Point: 0, 0, -6.3 mm

Category	Telephone parameters WD signal quality [(signal+noise)-to-noise ratio in decibels]
Category T1	0 dB to 10 dB
Category T2	10 dB to 20 dB
Category T3	20 dB to 30 dB
Category T4	> 30 dB

**Cursor:**  
 Diff = 1.17 dB  
 BWC Factor = 10.80 dB  
 Location: 7.7, -12.5, 3.7 mm



## Wi-Fi 2.4 GHz

Communication System: UID 0, 1@IEEE 802.11b/g/n/ac/ax 2.4 GHz Band (0); Frequency: 2437 MHz; Duty Cycle: 1:1

Phantom section: TCoil Section

DASY5 Configuration:

- Probe: AM1DV3 - 3083; ; Calibrated: 1/10/2022
- Sensor-Surface: 0mm (Fix Surface)
- Electronics: DAE4 Sn1357; Calibrated: 1/11/2022
- Phantom: HAC Test Arch with AMCC; Type: SD HAC P01 BB
- Measurement SW: DASY52, Version 52.10 (4);SEMCAD X Version 14.6.14 (7483)

**T-Coil scan (scan for ANSI C63.19 2011 compliance)/802.11b\_20 MHz BW\_CCK 5.5 Mbps\_EV5: 5.9 kbps\_Ch. 6\_ANT 3/z (axial) 4.2mm 50 x 50/ABM Interpolated SNR(x,y,z) (121x121x1):** Interpolated grid: dx=1.000 mm, dy=1.000 mm

Signal Type: Audio File (.wav) 48k\_voice\_1kHz\_1s.wav

Output Gain: 15.15

Measure Window Start: 300ms

Measure Window Length: 1000ms

BWC applied: 0.16 dB

Device Reference Point: 0, 0, -6.3 mm

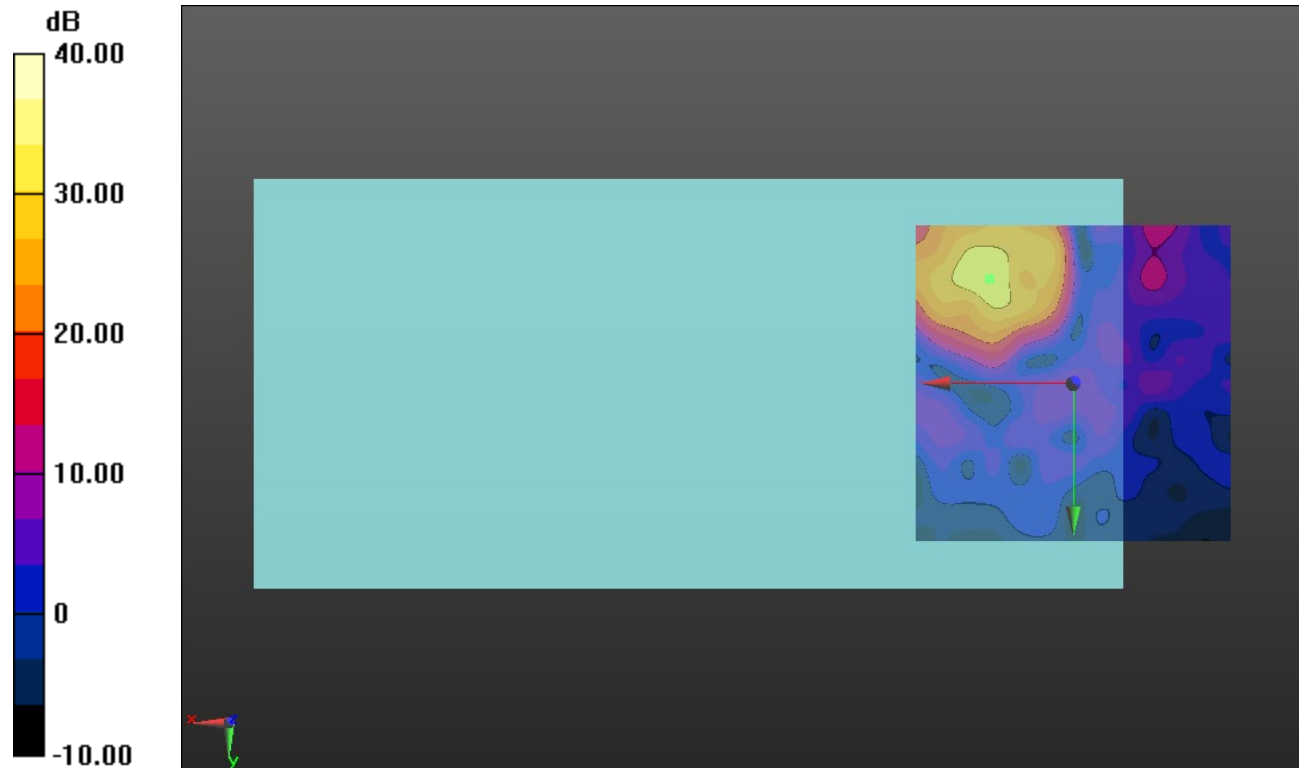
### Cursor:

ABM1/ABM2 = 33.18 dB

ABM1 comp = -0.26 dBA/m

BWC Factor = 0.16 dB

Location: 13.3, -16.7, 3.7 mm



0 dB = 1.000 = 0.00 dB

### Wi-Fi 5 GHz

Communication System: UID 0, 1@IEEE 802.11a/n/ac/ax 5 GHz Band (0); Frequency: 5180 MHz;Duty Cycle: 1:1

### T-Coil scan (scan for ANSI C63.19 2011 compliance)/802.11ac\_20 MHz BW\_MCS8 78 Mbps\_AMR-NB: 4.75 kbps\_Ch. 36\_ANT 6/y (transversal) wideband at best S/N/ABM

**Freq Resp(x,y,z,f) (1x1x1):** Measurement grid: dx=10mm, dy=10mm

Signal Type: Audio File (.wav) 48k\_voice\_300-3000\_2s.wav

Output Gain: 29.72

Measure Window Start: 300ms

Measure Window Length: 2000ms

BWC applied: 10.80 dB

Device Reference Point: 0, 0, -6.3 mm

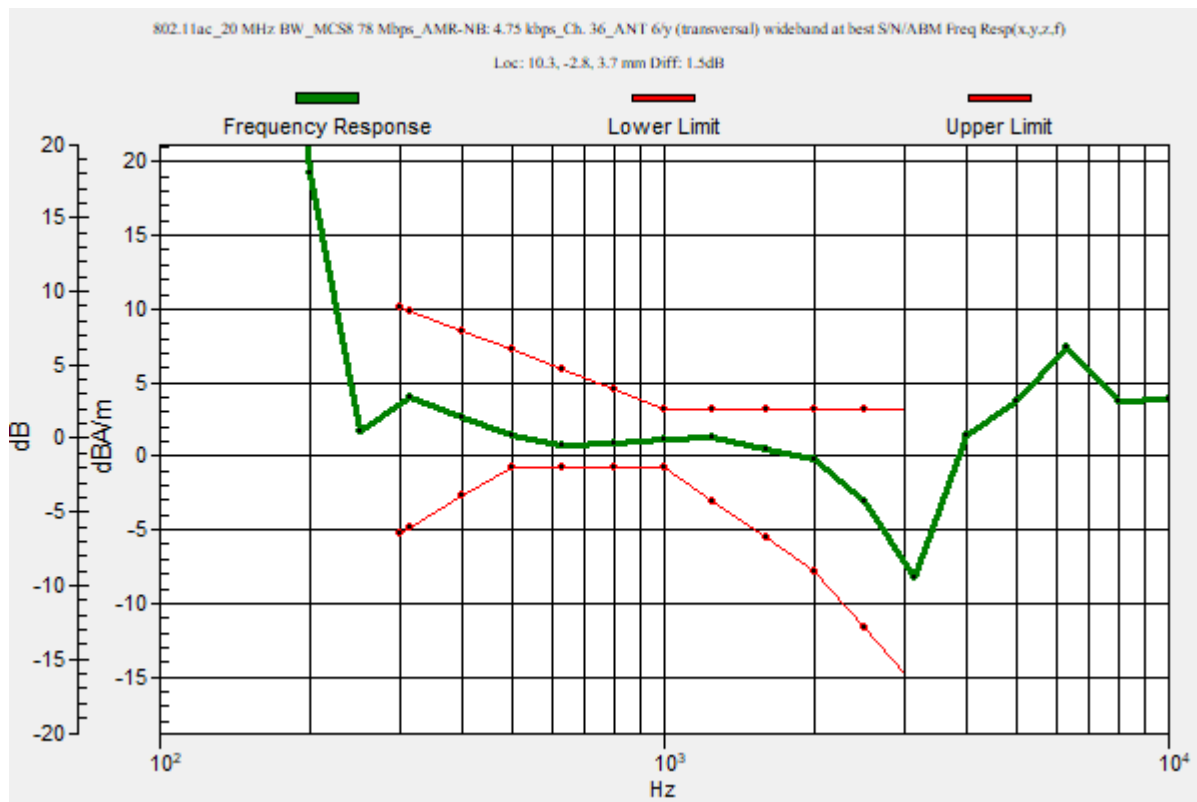
Category	Telephone parameters WD signal quality [(signal+noise)-to-noise ratio in decibels]
Category T1	0 dB to 10 dB
Category T2	10 dB to 20 dB
Category T3	20 dB to 30 dB
Category T4	> 30 dB

**Cursor:**

Diff = 1.50 dB

BWC Factor = 10.80 dB

Location: 10.3, -2.8, 3.7 mm



## Wi-Fi 5 GHz

Communication System: UID 0, 1@IEEE 802.11a/n/ac/ax 5 GHz Band (0); Frequency: 5180 MHz; Duty Cycle: 1:1

Phantom section: TCoil Section

DASY5 Configuration:

- Probe: AM1DV3 - 3083; ; Calibrated: 1/10/2022
- Sensor-Surface: 0mm (Fix Surface)
- Electronics: DAE4 Sn1357; Calibrated: 1/11/2022
- Phantom: HAC Test Arch with AMCC; Type: SD HAC P01 BB
- Measurement SW: DASY52, Version 52.10 (4);SEMCAD X Version 14.6.14 (7483)

### T-Coil scan (scan for ANSI C63.19 2011 compliance)/802.11ac\_20 MHz BW\_MCS8 78 Mbps\_AMR-NB: 4.75 kbps\_Ch. 36\_ANT 6/y (transversal) Single Point/ABM SNR(x,y,z)

(1x1x1): Measurement grid: dx=10mm, dy=10mm

Signal Type: Audio File (.wav) 48k\_voice\_1kHz\_1s.wav

Output Gain: 15.15

Measure Window Start: 300ms

Measure Window Length: 1000ms

BWC applied: 0.16 dB

Device Reference Point: 0, 0, -6.3 mm

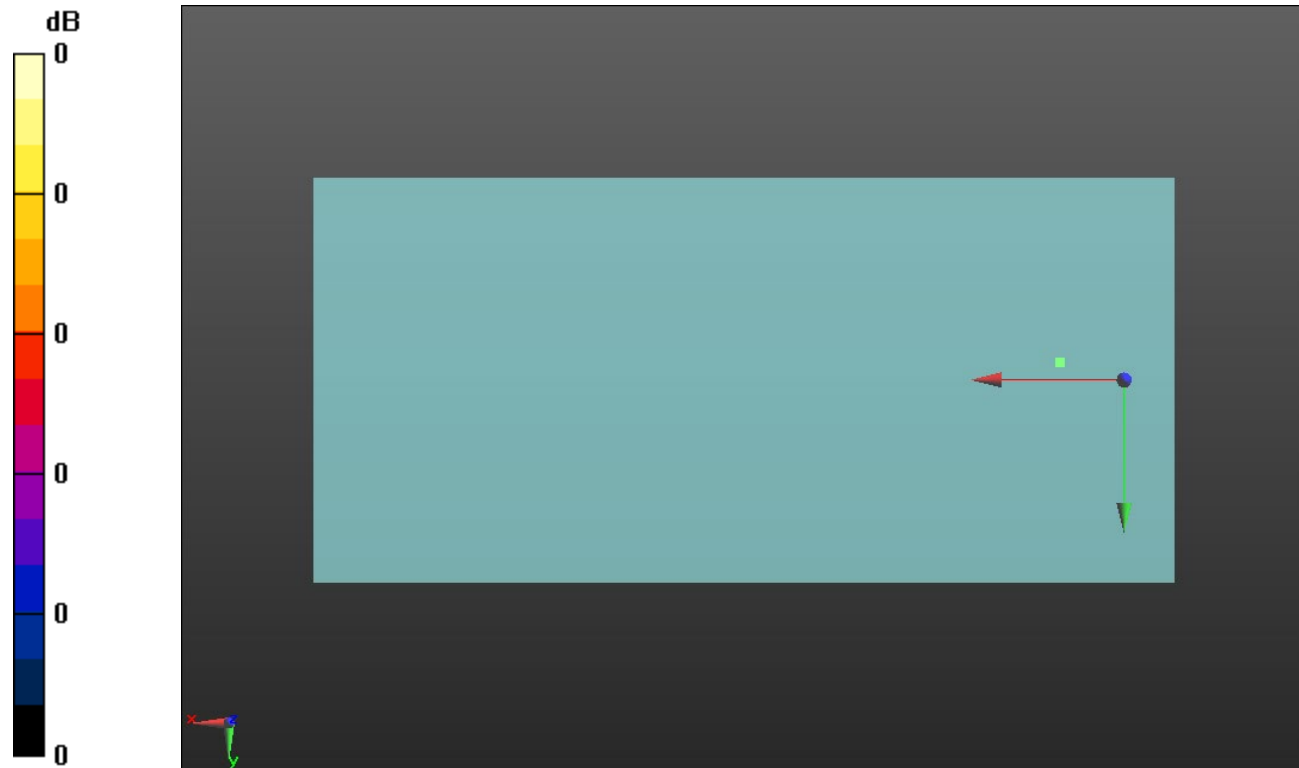
#### Cursor:

ABM1/ABM2 = 38.49 dB

ABM1 comp = -1.83 dBA/m

BWC Factor = 0.16 dB

Location: 10.3, -2.8, 3.7 mm



0 dB = 1.000 = 0.00 dB

### Wi-Fi 5 GHz

Communication System: UID 0, 1@IEEE 802.11a/n/ac/ax 5 GHz Band (0); Frequency: 5260 MHz;Duty Cycle: 1:1

### T-Coil scan (scan for ANSI C63.19 2011 compliance)/802.11ax\_20 MHz BW\_MCS8 78 Mbps\_AMR-NB: 4.75 kbps\_Ch. 52\_ANT 6/y (transversal) wideband at best S/N/ABM

**Freq Resp(x,y,z,f) (1x1x1):** Measurement grid: dx=10mm, dy=10mm

Signal Type: Audio File (.wav) 48k\_voice\_300-3000\_2s.wav

Output Gain: 29.72

Measure Window Start: 300ms

Measure Window Length: 2000ms

BWC applied: 10.80 dB

Device Reference Point: 0, 0, -6.3 mm

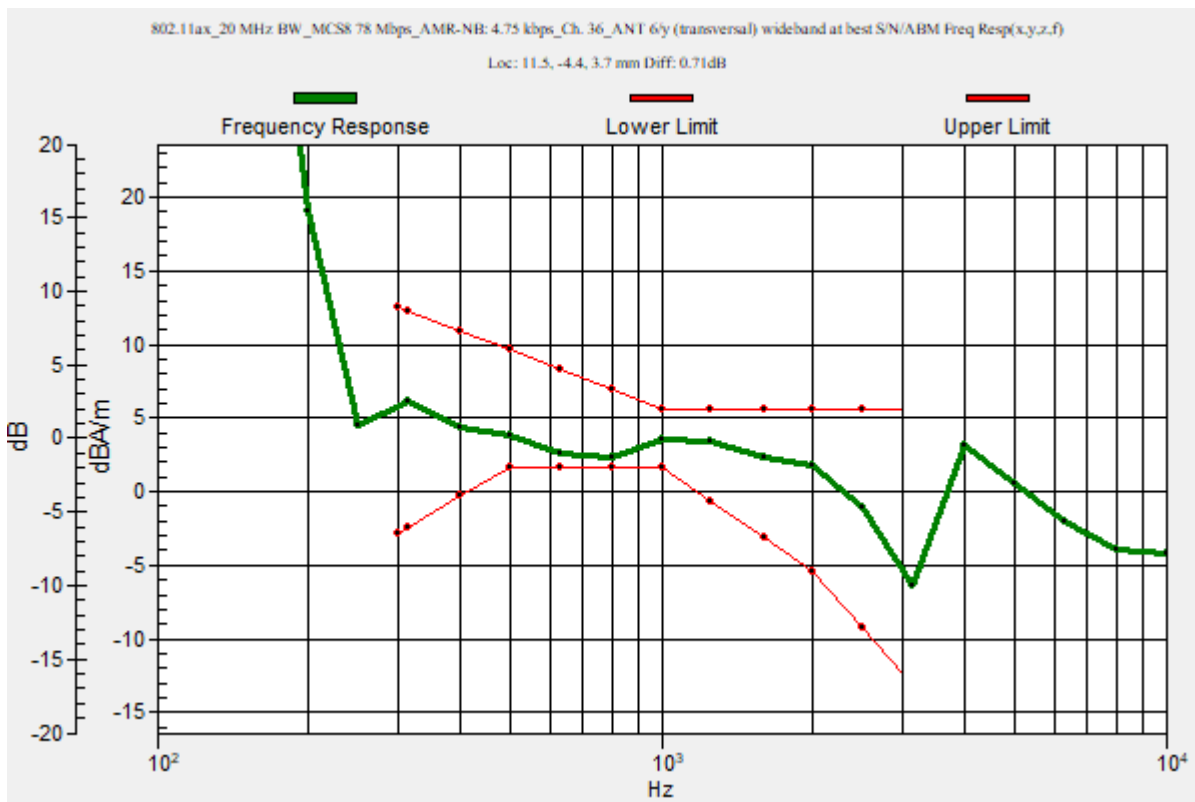
Category	Telephone parameters WD signal quality [(signal+noise)-to-noise ratio in decibels]
Category T1	0 dB to 10 dB
Category T2	10 dB to 20 dB
Category T3	20 dB to 30 dB
Category T4	> 30 dB

**Cursor:**

Diff = 0.71 dB

BWC Factor = 10.80 dB

Location: 11.5, -4.4, 3.7 mm



## Wi-Fi 5 GHz

Communication System: UID 0, 1@IEEE 802.11a/n/ac/ax 5 GHz Band (0); Frequency: 5260 MHz; Duty Cycle: 1:1

Phantom section: TCoil Section

DASY5 Configuration:

- Probe: AM1DV3 - 3083; ; Calibrated: 1/10/2022
- Sensor-Surface: 0mm (Fix Surface)
- Electronics: DAE4 Sn1357; Calibrated: 1/11/2022
- Phantom: HAC Test Arch with AMCC; Type: SD HAC P01 BB
- Measurement SW: DASY52, Version 52.10 (4);SEMCAD X Version 14.6.14 (7483)

### T-Coil scan (scan for ANSI C63.19 2011 compliance)/802.11ax\_20 MHz BW\_MCS8 78 Mbps\_AMR-NB: 4.75 kbps\_Ch. 52\_ANT 6/y (transversal) 4.2mm 50 x 50/ABM

**Interpolated SNR(x,y,z) (121x121x1):** Interpolated grid: dx=1.000 mm, dy=1.000 mm

Signal Type: Audio File (.wav) 48k\_voice\_1kHz\_1s.wav

Output Gain: 15.15

Measure Window Start: 300ms

Measure Window Length: 1000ms

BWC applied: 0.16 dB

Device Reference Point: 0, 0, -6.3 mm

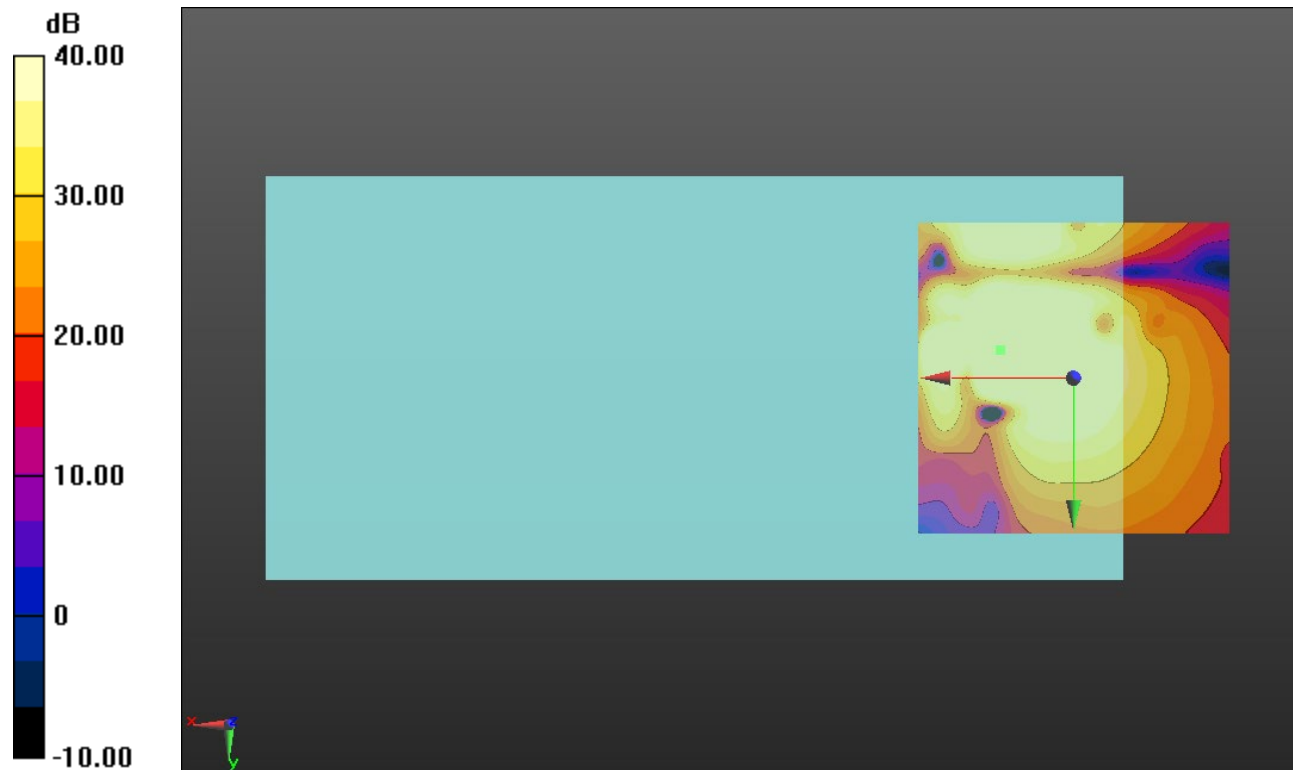
#### Cursor:

ABM1/ABM2 = 56.60 dB

ABM1 comp = 2.92 dBA/m

BWC Factor = 0.16 dB

Location: 11.7, -4.6, 3.7 mm



0 dB = 1.000 = 0.00 dB

### Wi-Fi 5 GHz

Communication System: UID 0, 1@IEEE 802.11a/n/ac/ax 5 GHz Band (0); Frequency: 5500 MHz;Duty Cycle: 1:1

### T-Coil scan (scan for ANSI C63.19 2011 compliance)/802.11ax\_20 MHz BW\_MCS8 78 Mbps\_AMR-NB: 4.75 kbps\_Ch. 100\_ANT 6/y (transversal) wideband at best S/N/ABM

**Freq Resp(x,y,z,f) (1x1x1):** Measurement grid: dx=10mm, dy=10mm

Signal Type: Audio File (.wav) 48k\_voice\_300-3000\_2s.wav

Output Gain: 29.72

Measure Window Start: 300ms

Measure Window Length: 2000ms

BWC applied: 10.80 dB

Device Reference Point: 0, 0, -6.3 mm

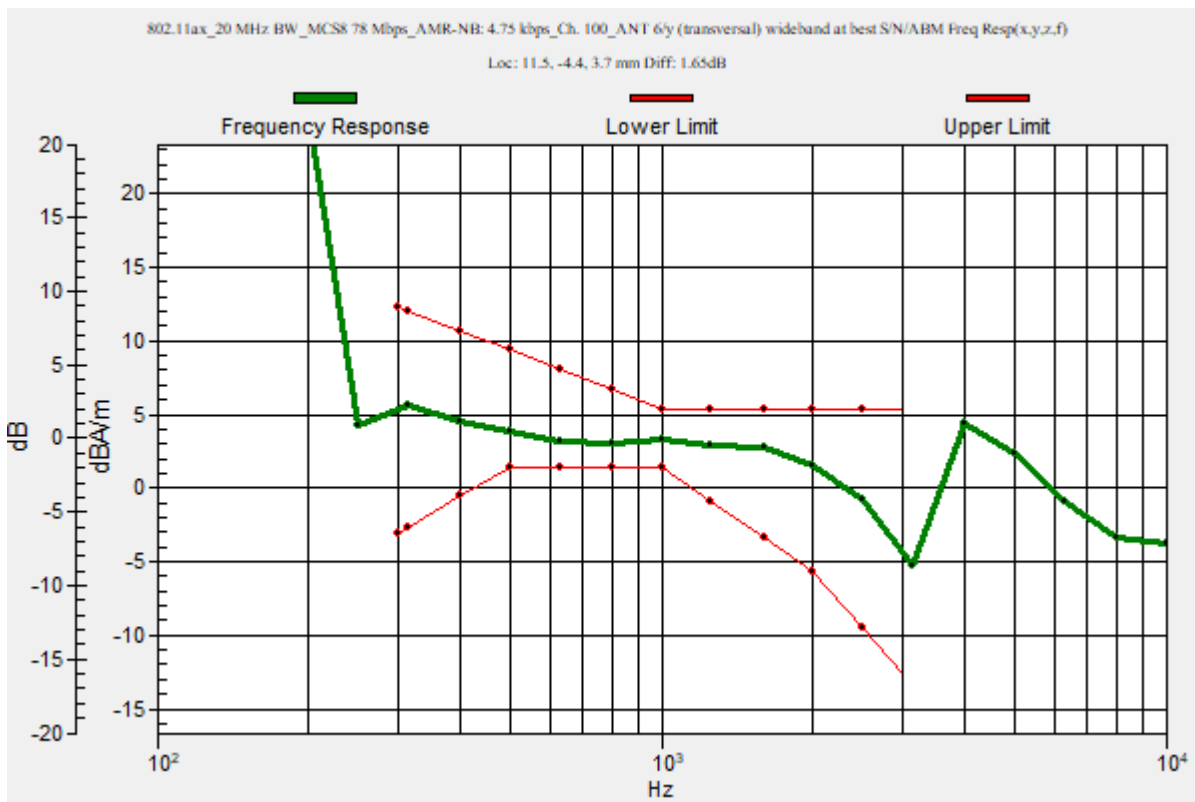
Category	Telephone parameters WD signal quality [(signal+noise)-to-noise ratio in decibels]
Category T1	0 dB to 10 dB
Category T2	10 dB to 20 dB
Category T3	20 dB to 30 dB
Category T4	> 30 dB

**Cursor:**

Diff = 1.65 dB

BWC Factor = 10.80 dB

Location: 11.5, -4.4, 3.7 mm



## Wi-Fi 5 GHz

Communication System: UID 0, 1@IEEE 802.11a/n/ac/ax 5 GHz Band (0); Frequency: 5500 MHz; Duty Cycle: 1:1

Phantom section: TCoil Section

DASY5 Configuration:

- Probe: AM1DV3 - 3083; ; Calibrated: 1/10/2022
- Sensor-Surface: 0mm (Fix Surface)
- Electronics: DAE4 Sn1357; Calibrated: 1/11/2022
- Phantom: HAC Test Arch with AMCC; Type: SD HAC P01 BB
- Measurement SW: DASY52, Version 52.10 (4);SEMCAD X Version 14.6.14 (7483)

### T-Coil scan (scan for ANSI C63.19 2011 compliance)/802.11ax\_20 MHz BW\_MCS8 78 Mbps\_AMR-NB: 4.75 kbps\_Ch. 100\_ANT 6/y (transversal) Single Point/ABM SNR(x,y,z)

(1x1x1): Measurement grid: dx=10mm, dy=10mm

Signal Type: Audio File (.wav) 48k\_voice\_1kHz\_1s.wav

Output Gain: 15.15

Measure Window Start: 300ms

Measure Window Length: 1000ms

BWC applied: 0.16 dB

Device Reference Point: 0, 0, -6.3 mm

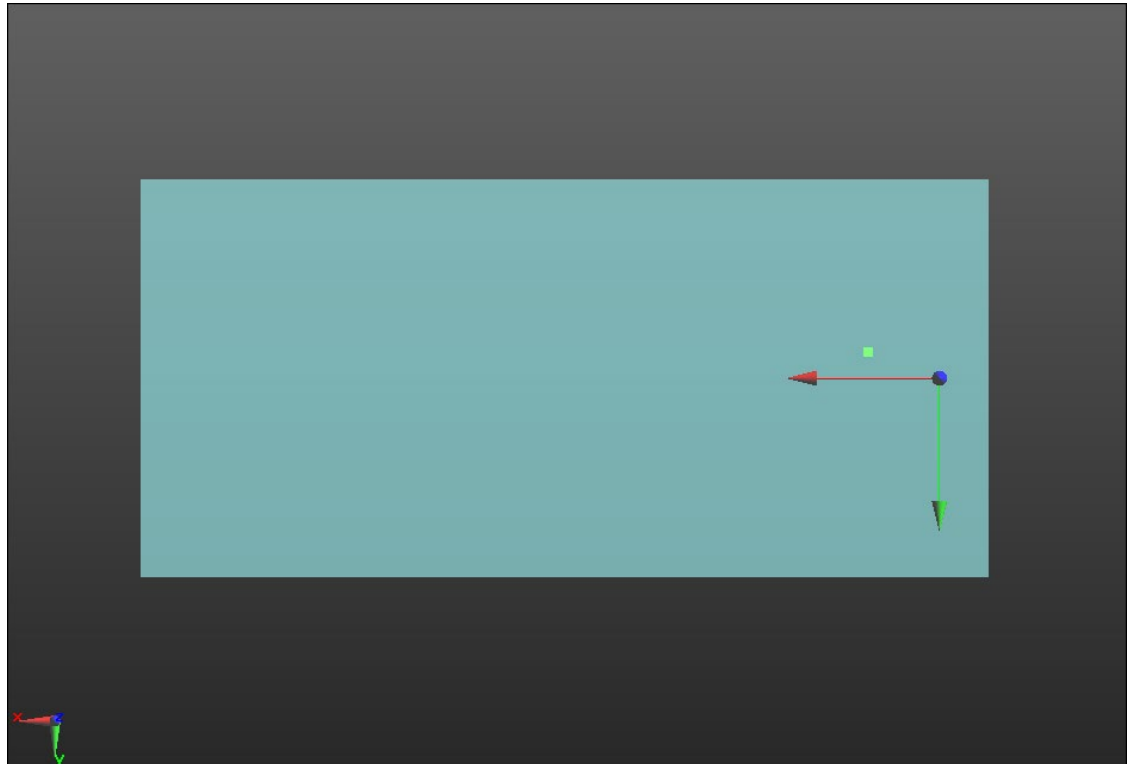
#### Cursor:

ABM1/ABM2 = 56.50 dB

ABM1 comp = 2.73 dBA/m

BWC Factor = 0.16 dB

Location: 11.5, -4.4, 3.7 mm



0 dB = 1.000 = 0.00 dB



### Wi-Fi 5 GHz

Communication System: UID 0, 1@IEEE 802.11a/n/ac/ax 5 GHz Band (0); Frequency: 5745 MHz;Duty Cycle: 1:1

### T-Coil scan (scan for ANSI C63.19 2011 compliance)/802.11ax\_20 MHz BW\_MCS8 78 Mbps\_AMR-NB: 4.75 kbps\_Ch. 149\_ANT 6/y (transversal) wideband at best S/N/ABM

**Freq Resp(x,y,z,f) (1x1x1):** Measurement grid: dx=10mm, dy=10mm

Signal Type: Audio File (.wav) 48k\_voice\_300-3000\_2s.wav

Output Gain: 29.72

Measure Window Start: 300ms

Measure Window Length: 2000ms

BWC applied: 10.80 dB

Device Reference Point: 0, 0, -6.3 mm

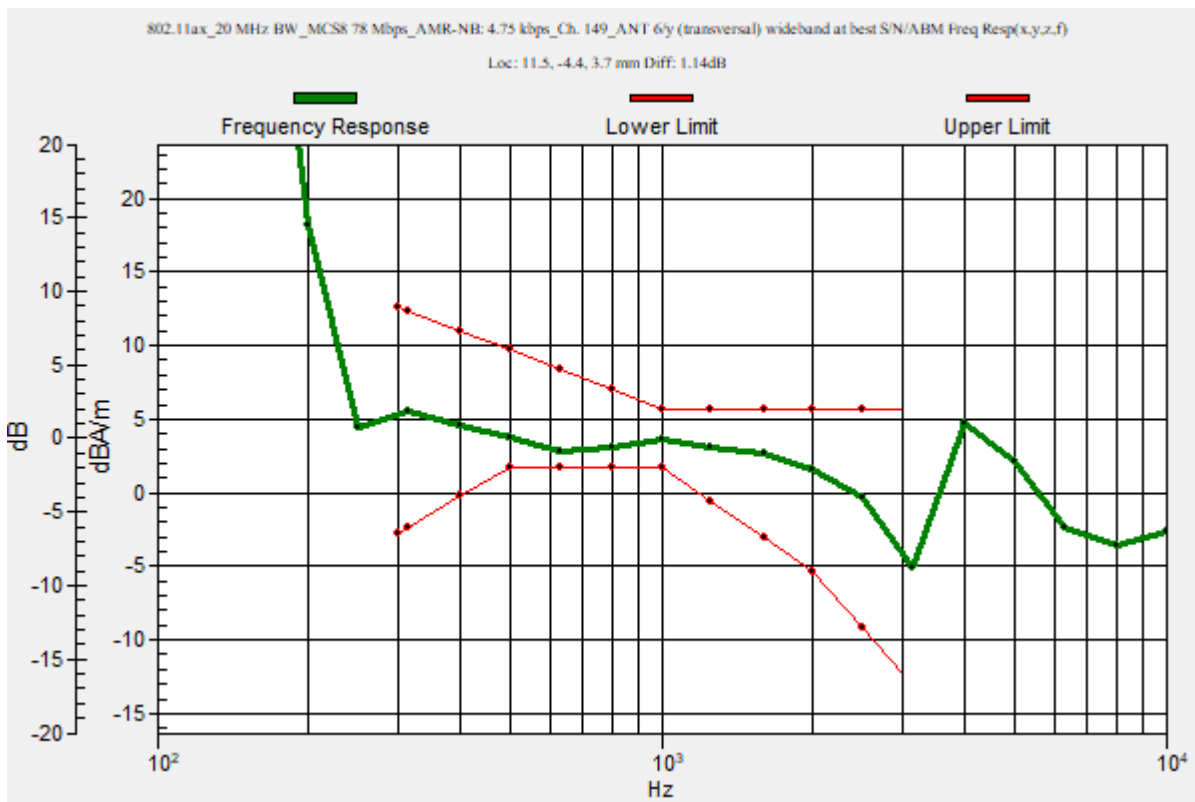
Category	Telephone parameters WD signal quality [(signal+noise)-to-noise ratio in decibels]
Category T1	0 dB to 10 dB
Category T2	10 dB to 20 dB
Category T3	20 dB to 30 dB
Category T4	> 30 dB

**Cursor:**

Diff = 1.14 dB

BWC Factor = 10.80 dB

Location: 11.5, -4.4, 3.7 mm



## Wi-Fi 5 GHz

Communication System: UID 0, 1@IEEE 802.11a/n/ac/ax 5 GHz Band (0); Frequency: 5745 MHz; Duty Cycle: 1:1

Phantom section: TCoil Section

DASY5 Configuration:

- Probe: AM1DV3 - 3083; ; Calibrated: 1/10/2022
- Sensor-Surface: 0mm (Fix Surface)
- Electronics: DAE4 Sn1357; Calibrated: 1/11/2022
- Phantom: HAC Test Arch with AMCC; Type: SD HAC P01 BB
- Measurement SW: DASY52, Version 52.10 (4);SEMCAD X Version 14.6.14 (7483)

### T-Coil scan (scan for ANSI C63.19 2011 compliance)/802.11ax\_20 MHz BW\_MCS8 78 Mbps\_AMR-NB: 4.75 kbps\_Ch. 149\_ANT 6/y (transversal) Single Point/ABM SNR(x,y,z)

(1x1x1): Measurement grid: dx=10mm, dy=10mm

Signal Type: Audio File (.wav) 48k\_voice\_1kHz\_1s.wav

Output Gain: 15.15

Measure Window Start: 300ms

Measure Window Length: 1000ms

BWC applied: 0.16 dB

Device Reference Point: 0, 0, -6.3 mm

#### Cursor:

ABM1/ABM2 = 55.82 dB

ABM1 comp = 2.72 dBA/m

BWC Factor = 0.16 dB

Location: 11.5, -4.4, 3.7 mm



0 dB = 1.000 = 0.00 dB