

Summary

Dipole	Frequency [MHz]	TSL	Power [dBm]	Dev. 1g [%]	Dev. 10g [%]	Dev. Peak [%]	Iso. Error [%]
D1750V2 - SN1053	1750.0	HSL	20.0	157.5	72.1	-1798.0	3.4

Exposure Conditions

Phantom Section, TSL	Test Distance [mm]	Band	Group, UID	Frequency [MHz], Channel Number	Conversion Factor	TSL Conductivity [S/m]	TSL Permittivity
Flat, HSL	10		, 0--	1750.0, 0	7.85	1.35	38.3

Hardware Setup

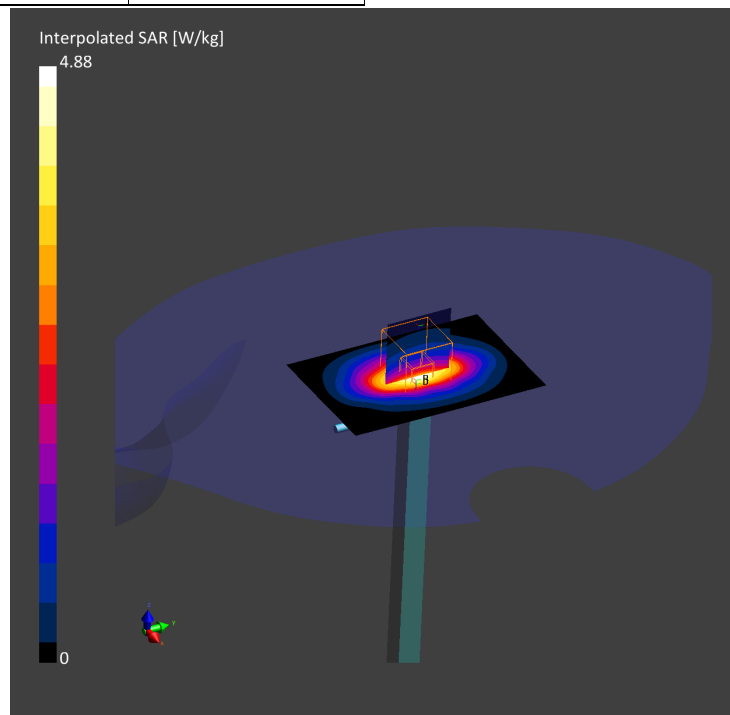
Phantom	TSL, Measured Date	Probe, Calibration Date	DAE, Calibration Date
Twin-SAM V5.0 (30deg probe tilt) - 1631	HBBL-600-10000 Charge:190318-3, 2021-Jun-15	EX3DV4 - SN3756, 2020-10-15	DAE4 Sn1263, 2020-10-08

Scans Setup

	Area Scan	Zoom Scan
Grid Extents [mm]	60.0 x 90.0	30.0 x 30.0 x 30.0
Grid Steps [mm]	15.0 x 15.0	6.0 x 6.0 x 1.5
Sensor Surface [mm]	3.0	1.4
Graded Grid	No	Yes
Grading Ratio	n/a	1.5
MAIA	N/A	N/A
Surface Detection	VMS + 6p	VMS + 6p
Scan Method	Measured	Measured

Measurement Results

	Area Scan	Zoom Scan
Date	2021-06-15, 01:25	2021-06-15, 01:31
psSAR1g [W/Kg]	3.92	3.90
psSAR10g [W/Kg]	2.09	2.07
Power Drift [dB]	0.01	0.03
Power Scaling	Disabled	Disabled
Scaling Factor [dB]		
TSL Correction	No correction	No correction



System**Performance****Check****Report****Summary**

Dipole	Frequency [MHz]	TSL	Power [dBm]	Dev. 1g [%]	Dev. 10g [%]	Dev. Peak [%]	Iso. Error [%]
D1750V2 - SN1053	1750.0	HSL	20.0	142.7	63.9	-1798.0	-2.9

Exposure Conditions

Phantom Section, TSL	Test Distance [mm]	Band	Group, UID	Frequency [MHz], Channel Number	Conversion Factor	TSL Conductivity [S/m]	TSL Permittivity
Flat, HSL	10		, 0--	1750.0, 0	7.85	1.34	38.3

Hardware Setup

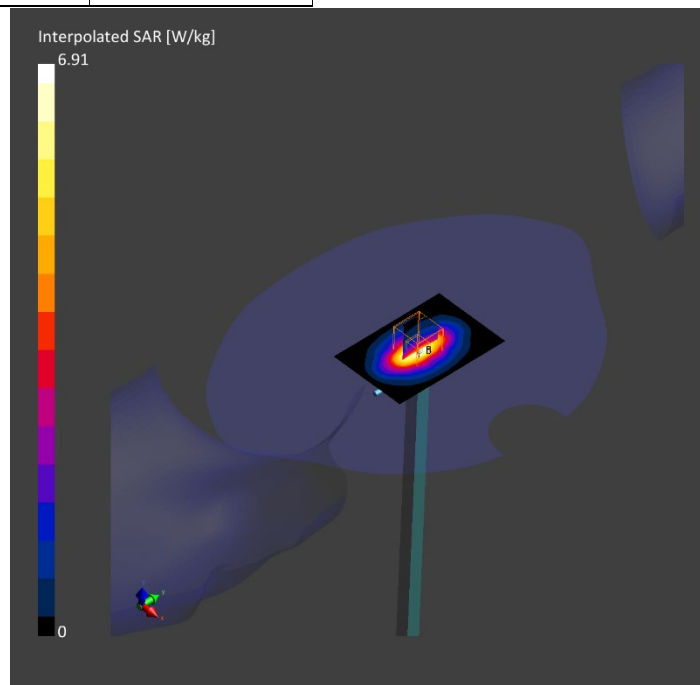
Phantom	TSL, Measured Date	Probe, Calibration Date	DAE, Calibration Date
Twin-SAM V5.0 (30deg probe tilt) - 1631	HBBL-600-10000 Charge:190318-3, 2021-Jun-19	EX3DV4 - SN3756, 2020-10-15	DAE4 Sn1263, 2020-10-08

Scans Setup

	Area Scan	Zoom Scan
Grid Extents [mm]	60.0 x 90.0	30.0 x 30.0 x 30.0
Grid Steps [mm]	15.0 x 15.0	6.0 x 6.0 x 1.5
Sensor Surface [mm]	3.0	1.4
Graded Grid	No	Yes
Grading Ratio	n/a	1.5
MAIA	N/A	N/A
Surface Detection	VMS + 6p	VMS + 6p
Scan Method	Measured	Measured

Measurement Results

	Area Scan	Zoom Scan
Date	2021-06-19, 01:37	2021-06-19, 01:42
psSAR1g [W/Kg]	3.72	3.71
psSAR10g [W/Kg]	1.96	1.98
Power Drift [dB]	-0.06	-0.12
Power Scaling	Disabled	Disabled
Scaling Factor [dB]		
TSL Correction	No correction	No correction



System**Performance****Check****Report****Summary**

Dipole	Frequency [MHz]	TSL	Power [dBm]	Dev. 1g [%]	Dev. 10g [%]	Dev. Peak [%]	Iso. Error [%]
D1900V2 - SN5d140	1900.0	HSL	20.0	123.9	55.8	-1798.0	3.4

Exposure Conditions

Phantom Section, TSL	Test Distance [mm]	Band	Group, UID	Frequency [MHz], Channel Number	Conversion Factor	TSL Conductivity [S/m]	TSL Permittivity
Flat, HSL	10		, 0--	1900.0, 0	7.58	1.46	38.1

Hardware Setup

Phantom	TSL, Measured Date	Probe, Calibration Date	DAE, Calibration Date
Twin-SAM V5.0 (30deg probe tilt) - 1631	HBBL-600-10000 Charge:190318-3, 2021-Jun-15	EX3DV4 - SN3756, 2020-10-15	DAE4 Sn1263, 2020-10-08

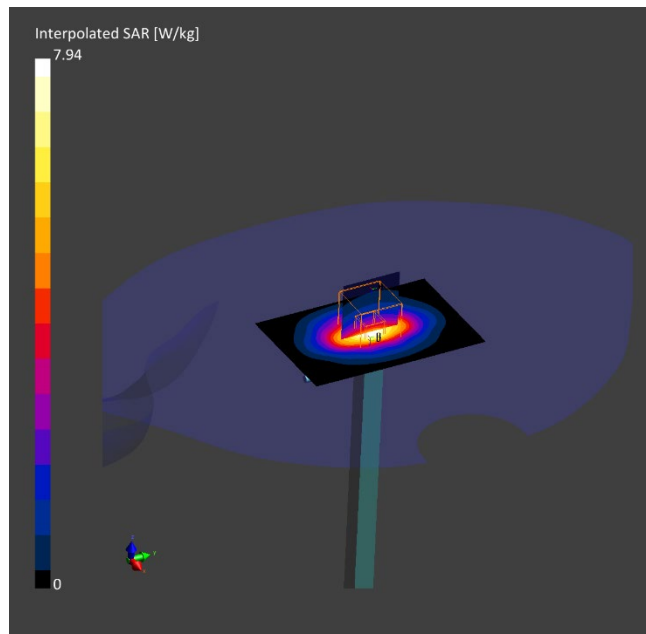
Scans Setup

	Area Scan	Zoom Scan
Grid Extents [mm]	60.0 x 90.0	30.0 x 30.0 x 30.0
Grid Steps [mm]	15.0 x 15.0	6.0 x 6.0 x 1.5
Sensor Surface [mm]	3.0	1.4
Graded Grid	No	Yes
Grading Ratio	n/a	1.5
MAIA	N/A	N/A
Surface Detection	VMS + 6p	VMS + 6p

Scan Method	Measured	Measured
-------------	----------	----------

Measurement Results

	Area Scan	Zoom Scan
Date	2021-06-15, 01:40	2021-06-15, 01:46
psSAR1g [W/Kg]	4.22	4.21
psSAR10g [W/Kg]	2.19	2.21
Power Drift [dB]	0.00	0.02
Power Scaling	Disabled	Disabled
Scaling Factor [dB]		
TSL Correction	No correction	No correction



System**Performance****Check****Report****Summary**

Dipole	Frequency [MHz]	TSL	Power [dBm]	Dev. 1g [%]	Dev. 10g [%]	Dev. Peak [%]	Iso. Error [%]
D1900V2 - SN5d140	1900.0	HSL	20.0	127.6	56.8	-1798.0	-2.8

Exposure Conditions

Phantom Section, TSL	Test Distance [mm]	Band	Group, UID	Frequency [MHz], Channel Number	Conversion Factor	TSL Conductivity [S/m]	TSL Permittivity
Flat, HSL	10		, 0--	1900.0, 0	7.58	1.41	38.1

Hardware Setup

Phantom	TSL, Measured Date	Probe, Calibration Date	DAE, Calibration Date
Twin-SAM V5.0 (30deg probe tilt) - 1631	HBBL-600-10000 Charge:190318-3, 2021-Jun-19	EX3DV4 - SN3756, 2020-10-15	DAE4 Sn1263, 2020-10-08

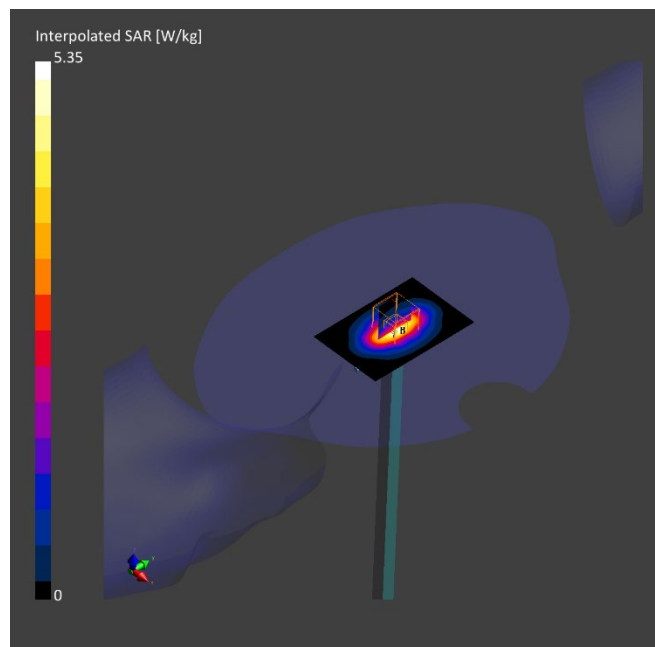
Scans Setup

	Area Scan	Zoom Scan
Grid Extents [mm]	60.0 x 90.0	30.0 x 30.0 x 30.0
Grid Steps [mm]	15.0 x 15.0	6.0 x 6.0 x 1.5
Sensor Surface [mm]	3.0	1.4
Graded Grid	No	Yes
Grading Ratio	n/a	1.5
MAIA	N/A	N/A
Surface Detection	VMS + 6p	VMS + 6p

Scan Method	Measured	Measured
-------------	----------	----------

Measurement Results

	Area Scan	Zoom Scan
Date	2021-06-19, 01:49	2021-06-19, 01:55
psSAR1g [W/Kg]	4.21	4.31
psSAR10g [W/Kg]	2.14	2.23
Power Drift [dB]	-0.01	-0.08
Power Scaling	Disabled	Disabled
Scaling Factor [dB]		
TSL Correction	No correction	No correction



Model, Manufacturer	Dimensions [mm]	IMEI
5G Verification Source 30GHz	100.0 x 100.0 x 100.0	SN: 1004

Exposure Conditions

Phantom Section	Position, Test Distance [mm]	Band	Group, UID	Frequency [MHz], Channel Number	Conversion Factor
5G Air	FRONT, 5.55	Validation band	CW, 0--	30000.0, 30000	1.0

Hardware Setup

Phantom	Medium	Probe, Calibration Date	DAE, Calibration Date
mmWave- 1005	Air---	EUmmWV3 - SN9357_F1-78GHz, 2020-09-14	DAE4ip Sn1610, 2020-02-10

Scan Setup

	5G Scan
Grid Extents [mm]	60.0 x 60.0
Grid Steps [lambda]	0.25 x 0.25
Sensor Surface [mm]	5.55
MAIA	N/A

Measurement Results

	5G Scan
Date	2021-06-21, 12:19
Avg. Area [cm ²]	4.00
psPDn+ [W/m ²]	73.6
psPDtot+ [W/m ²]	73.9
psPDmod+ [W/m ²]	74.1
E _{max} [V/m]	195
Power Drift [dB]	-0.06

