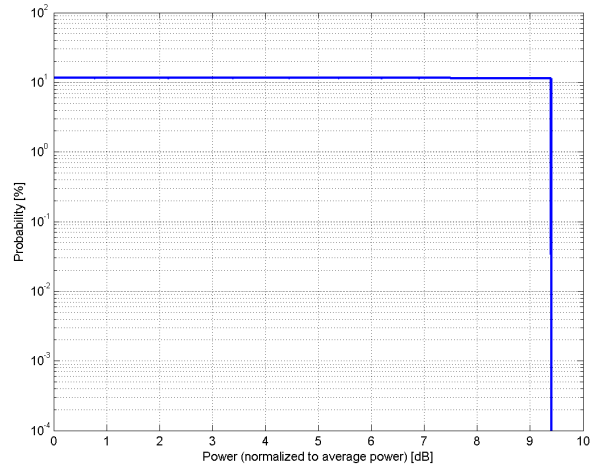


**Calibration Laboratory of
Schmid & Partner
Engineering AG**
Zeughausstrasse 43, 8004 Zurich, Switzerland

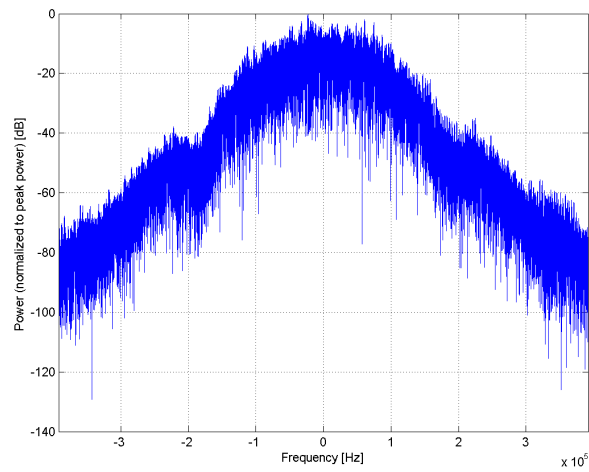
| | |
|-------------------------|----------------------------------------------------------------------------------------------------------------------------------------------------------------------------------------------------------------------------------------------------------------------------------------------------------------------------------------------------------------------------------|
| Name: | GSM-FDD (TDMA, GMSK) |
| Group: | GSM |
| UID: | 10021-DAA |
| PAR: ¹ | 9.39 dB |
| MIF: ² | 3.63 dB |
| Standard Reference: | ETSI TS 100 909 V8.9.0 (2005-01) FCC OET KDB 941225, D03 and D04 |
| Category: | Periodic pulsed modulation |
| Modulation: | GMSK |
| Frequency Band: | GSM 450 (450.4-457.6 MHz, 20016) GSM 480 (478.8-486.0 MHz, 20017) GSM 710 (698.0-716.0 MHz, 20018) GSM 750 (747.0-763.0 MHz, 20019) GSM 850 (824.0-849.0 MHz, 20021) P-GSM 900 (890.0-915.0 MHz, 20022) E-GSM 900 (880.0-915.0 MHz, 20023) R-GSM 900 (876.0-915.0 MHz, 20024) DCS 1800 (1710.0-1785.0 MHz, 20026) PCS 1900 (1850.0-1910.0 MHz, 20027) |
| Detailed Specification: | Active Slot: TN0 Data: PN9 continuous Frame: composed out of 8 Slots Multiframe: 26th (IDLE) Frame set blank Slottype & -timing: Normal burst for GMSK |
| Bandwidth: | 0.4 MHz |
| Integration Time: | 120.0 ms |

¹ PAR (0.1%) in accordance with FCC KDB 971168, Section 6.0 "Measurement of the Peak-to-Average Power Ratio (PAPR)"

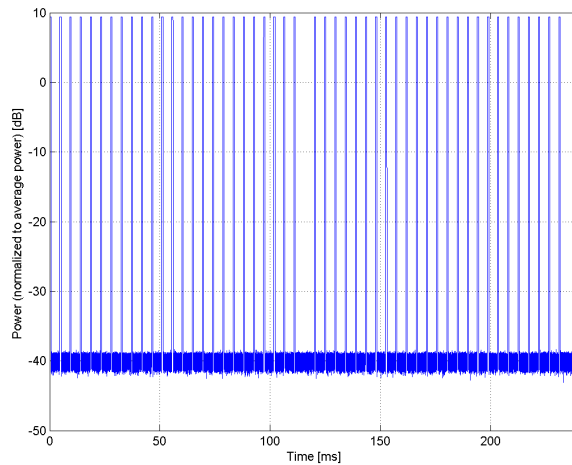
² Modulation Interference Factor (MIF) value valid only in conjunction with advanced probe response linearization calibration for the same communication system (same UID and version).



Complementary Cumulative Distribution Function (CCDF)



Frequency Domain



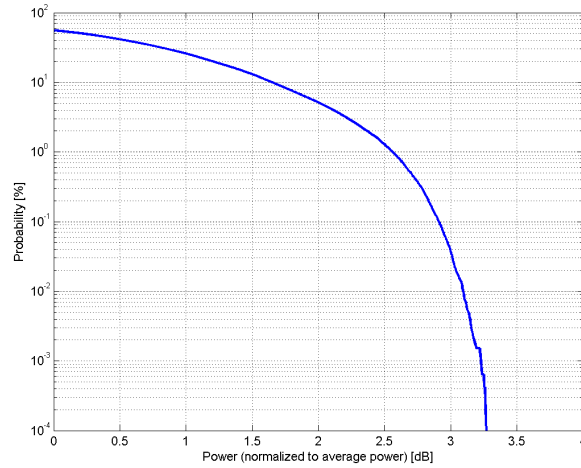
Time Domain

**Calibration Laboratory of
Schmid & Partner
Engineering AG**
Zeughausstrasse 43, 8004 Zurich, Switzerland

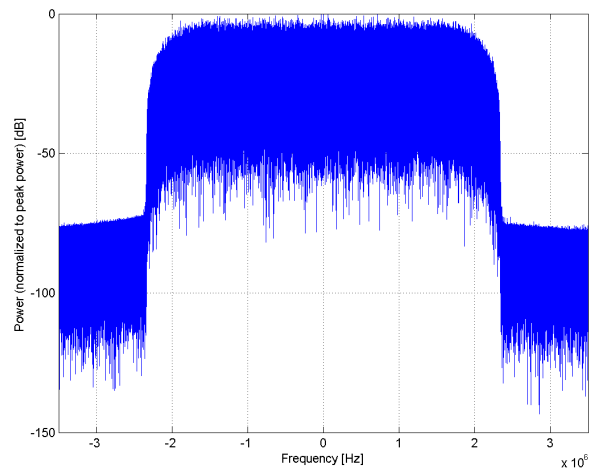
| | |
|-------------------------|---------------------------------------------------------------------------------------------------------------------------------------------------------------------------------------------------------------------------------------------------------------------------------------------------------------------------------------------------------------------------------------------------------------------------------------------------------------------------------------------------------------------------------------------------------------------------------------------------------------------------------------------------------------------------------------------------------------------------------------------------------------------------------------------------------------------|
| Name: | UMTS-FDD (WCDMA) |
| Group: | WCDMA |
| UID: | 10011-CAA |
| PAR: ¹ | 2.91 dB |
| MIF: ² | -27.23 dB |
| Standard Reference: | 3GPP TS 25.141 Annex A FCC OET KDB 941225 D01 SAR test for 3G devices v02 |
| Category: | Random amplitude modulation |
| Modulation: | QPSK |
| Frequency Band: | Band 1, UTRA/FDD (1920.0-1980.0 MHz, 20000) Band 2, UTRA/FDD (1850.0-1910.0 MHz, 20001) Band 3, UTRA/FDD (1710.0-1785.0 MHz, 20002) Band 4, UTRA/FDD (1710.0-1755.0 MHz, 20003) Band 5, UTRA/FDD (824.0-849.0 MHz, 20004) Band 6, UTRA/FDD (830.0-840.0 MHz, 20005) Band 7, UTRA/FDD (2500.0-2570.0 MHz, 20006) Band 8, UTRA/FDD (880.0-915.0 MHz, 20007) Band 9, UTRA/FDD (1749.9-1784.9 MHz, 20008) Band 10, UTRA/FDD (1710.0-1770.0 MHz, 20009) Band 11, UTRA/FDD (1427.9-1452.9 MHz, 20010) Band 12, UTRA/FDD (698.0-716.0 MHz, 20011) Band 13, UTRA/FDD (777.0-787.0 MHz, 20012) Band 14, UTRA/FDD (788.0-798.0 MHz, 20013) Band 19, UTRA/FDD (830.0-845.0 MHz, 20130) Band 20, UTRA/FDD (832.0-862.0 MHz, 20131) Band 21, UTRA/FDD (1447.9-1462.9 MHz, 20132) |
| Detailed Specification: | Dedicated Channel Type: RMC Bitrate: 12.2 kbps DPDCH: 60 kbps DPCCH: 15 kbps DPCCH/DPDCH power ratio: -5.46 dB |
| Bandwidth: | 5.0 MHz |
| Integration Time: | 100.0 ms |

¹ PAR (0.1%) in accordance with FCC KDB 971168, Section 6.0 "Measurement of the Peak-to-Average Power Ratio (PAPR)"

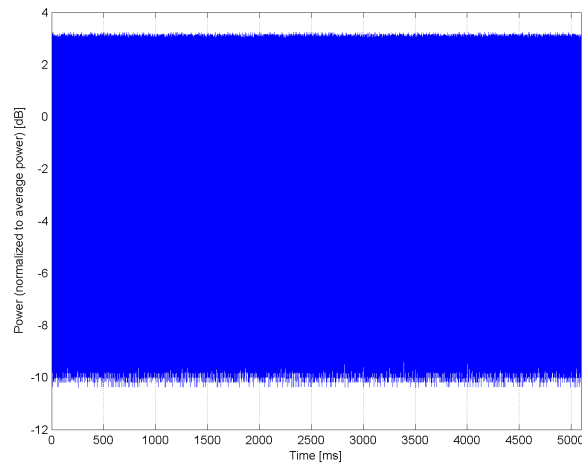
² Modulation Interference Factor (MIF) value valid only in conjunction with advanced probe response linearization calibration for the same communication system (same UID and version).



Complementary Cumulative Distribution Function (CCDF)



Frequency Domain



Time Domain

HAC-RF Emission

Communication System: UID 0, CW; Frequency: 835 MHz; Duty Cycle: 1:1

Phantom section: RF Section

DASY5 Configuration:

- Probe: ER3DV6 - SN2509; ConvF(1, 1, 1); Calibrated: 5/29/2013;
- Sensor-Surface: (Fix Surface)
- Electronics: DAE4 Sn1258; Calibrated: 3/6/2013
- Phantom: HAC Test Arch with AMCC; Type: SD HAC P01 BB
- Measurement SW: DASY52, Version 52.8 (7);SEMCAD X Version 14.6.10 (7164)

Dipole E-Field measurement/835 MHz/Hearing Aid Compatibility Test at 15mm distance

(41x361x1): Interpolated grid: dx=0.5000 mm, dy=0.5000 mm

Device Reference Point: 0, 0, -6.3 mm

Reference Value = 113.7 V/m; Power Drift = -0.02 dB

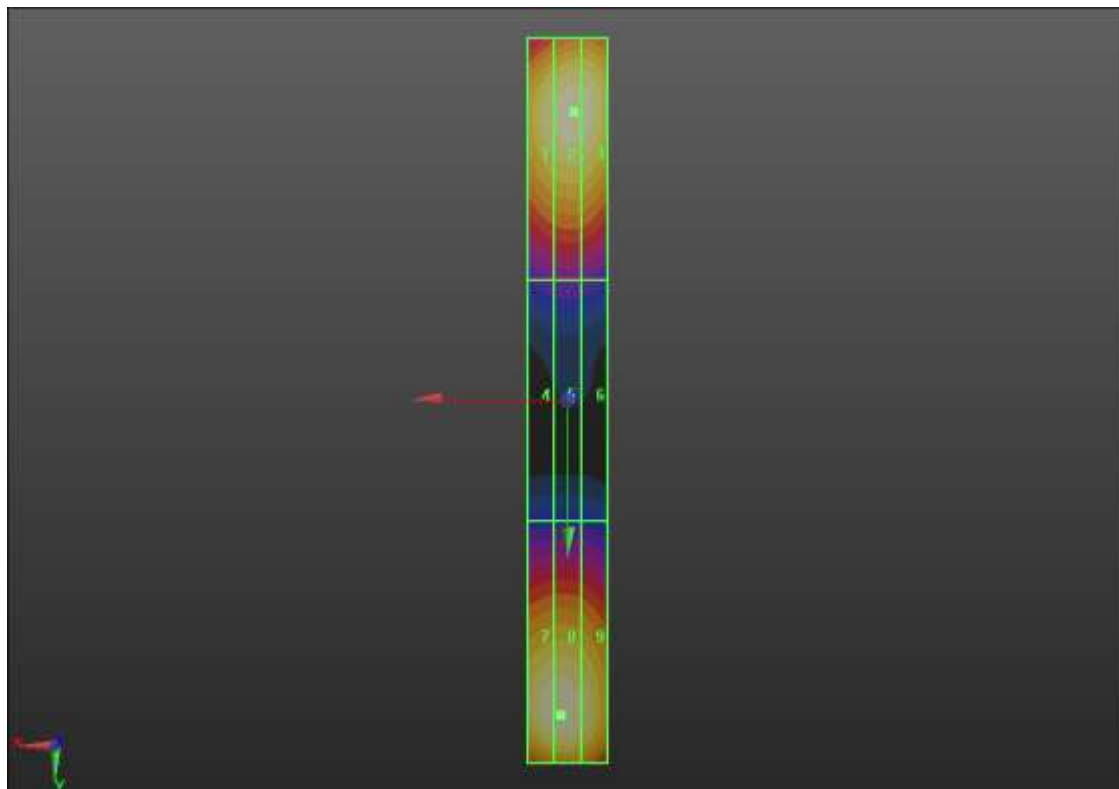
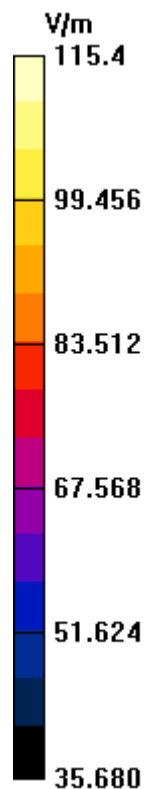
PMR not calibrated. PMF = 1.000 is applied.

E-field emissions = 115.4 V/m

Near-field category: **M4 (AWF 0 dB)**

PMF scaled E-field

| | | |
|--------------------------------------|--------------------------------------|--------------------------------------|
| Grid 1 M4 110.7 V/m | Grid 2 M4 113.9 V/m | Grid 3 M4 113.4 V/m |
| Grid 4 M4 63.26 V/m | Grid 5 M4 64.43 V/m | Grid 6 M4 63.51 V/m |
| Grid 7 M4 114.6 V/m | Grid 8 M4 115.4 V/m | Grid 9 M4 111.0 V/m |



HAC-RF Emission

Communication System: UID 0, CW; Frequency: 1880 MHz; Duty Cycle: 1:1

Phantom section: RF Section

DASY5 Configuration:

- Probe: ER3DV6 - SN2509; ConvF(1, 1, 1); Calibrated: 5/29/2013;

- Sensor-Surface: (Fix Surface)

- Electronics: DAE4 Sn1258; Calibrated: 3/6/2013

- Phantom: HAC Test Arch with AMCC; Type: SD HAC P01 BB

- Measurement SW: DASY52, Version 52.8 (7); SEMCAD X Version 14.6.10 (7164)

Dipole E-Field measurement/1880 MHz/Hearing Aid Compatibility Test at 15mm distance (41x181x1): Interpolated grid: dx=0.5000 mm, dy=0.5000 mm

Device Reference Point: 0, 0, -6.3 mm

Reference Value = 156.4 V/m; Power Drift = 0.04 dB

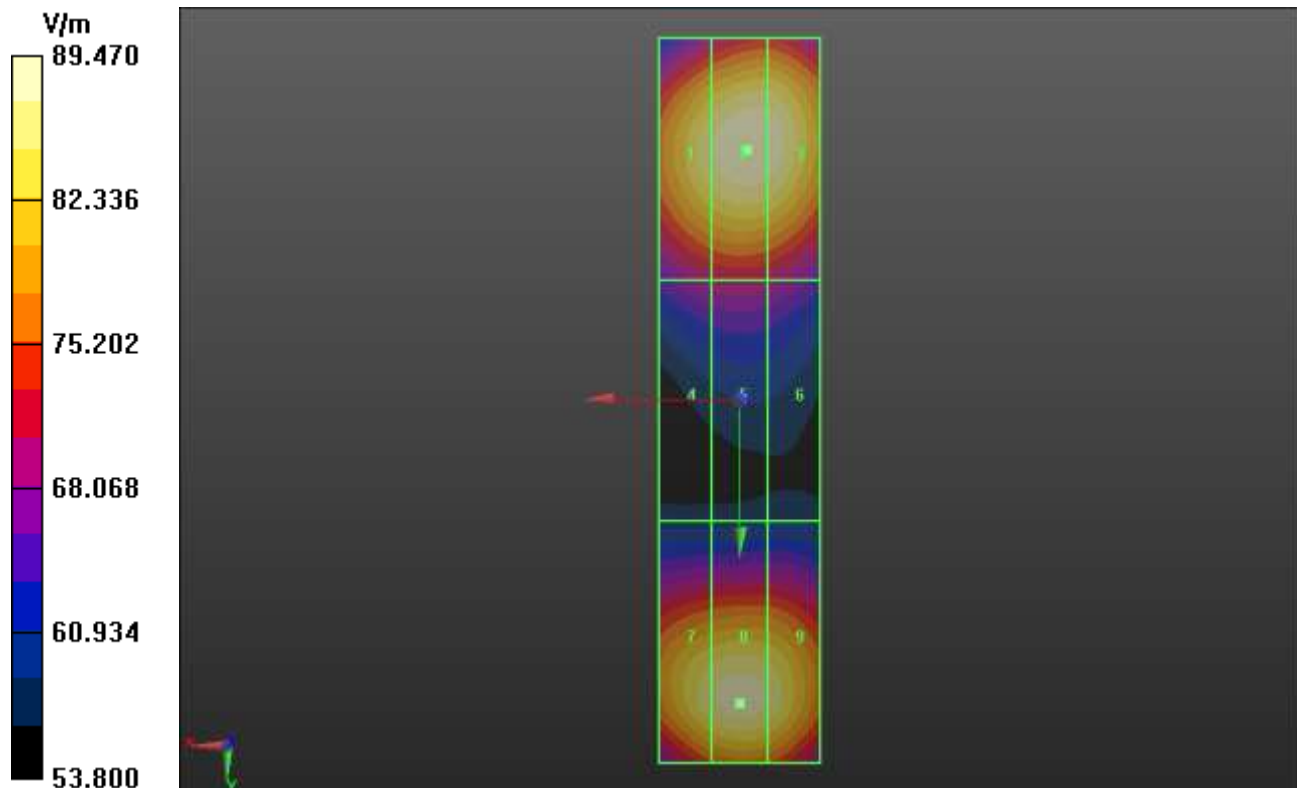
PMR not calibrated. PMF = 1.000 is applied.

E-field emissions = 89.47 V/m

Near-field category: **M3 (AWF 0 dB)**

PMF scaled E-field

| | | |
|--------------------------------------|--------------------------------------|--------------------------------------|
| Grid 1 M3 86.94 V/m | Grid 2 M3 89.47 V/m | Grid 3 M3 88.91 V/m |
| Grid 4 M3 69.89 V/m | Grid 5 M3 70.89 V/m | Grid 6 M3 69.95 V/m |
| Grid 7 M3 86.60 V/m | Grid 8 M3 88.18 V/m | Grid 9 M3 86.91 V/m |



HAC-RF Emission

Communication System: UID 10021 - CAA, GSM-FDD (TDMA, GMSK); Frequency: 824.2 MHz; Duty Cycle: 1:8.6896

Phantom section: RF Section

DASY5 Configuration:

- Probe: ER3DV6 - SN2509; ConvF(1, 1, 1); Calibrated: 5/29/2013;
- Sensor-Surface: (Fix Surface)
- Electronics: DAE4 Sn1258; Calibrated: 3/6/2013
- Phantom: HAC Test Arch with AMCC; Type: SD HAC P01 BB
- Measurement SW: DASY52, Version 52.8 (7); SEMCAD X Version 14.6.10 (7164)

UAT_GSM850 E-Field measurement/Voice_ch 128/Hearing Aid Compatibility Test (101x101x1):

Interpolated grid: dx=0.5000 mm, dy=0.5000 mm

Device Reference Point: 0, 0, -6.3 mm

Reference Value = 80.11 V/m; Power Drift = 0.48 dB

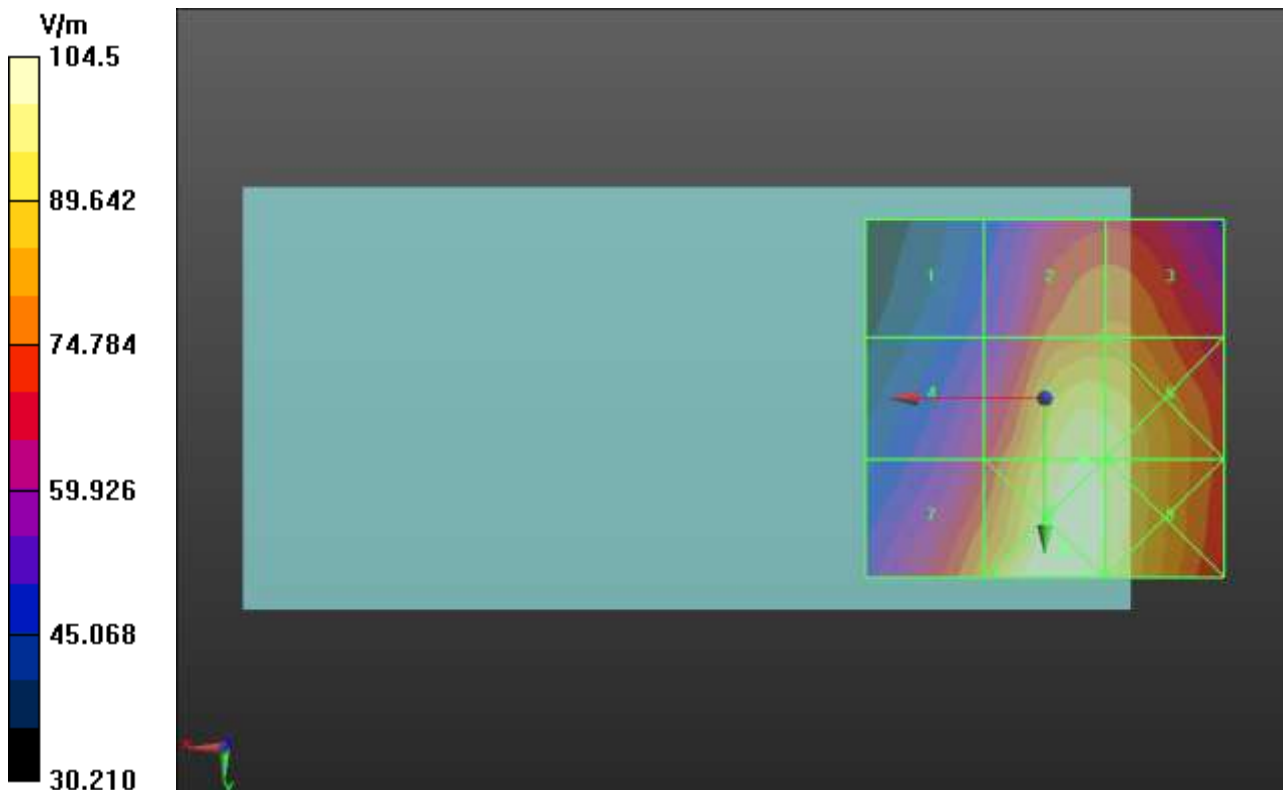
Applied MIF = 3.63 dB

RF audio interference level = 39.99 dBV/m

Emission category: **M4**

MIF scaled E-field

| | | |
|----------------------------------------|----------------------------------------|----------------------------------------|
| Grid 1 M4 34.66 dBV/m | Grid 2 M4 38.21 dBV/m | Grid 3 M4 38.24 dBV/m |
| Grid 4 M4 36.59 dBV/m | Grid 5 M4 39.99 dBV/m | Grid 6 M4 39.79 dBV/m |
| Grid 7 M4 38.54 dBV/m | Grid 8 M3 40.38 dBV/m | Grid 9 M4 39.95 dBV/m |



HAC-RF Emission

Communication System: UID 10021 - CAA, GSM-FDD (TDMA, GMSK); Frequency: 836.6 MHz; Duty Cycle: 1:8.6896

Phantom section: RF Section

DASY5 Configuration:

- Probe: ER3DV6 - SN2509; ConvF(1, 1, 1); Calibrated: 5/29/2013;
- Sensor-Surface: (Fix Surface)
- Electronics: DAE4 Sn1258; Calibrated: 3/6/2013
- Phantom: HAC Test Arch with AMCC; Type: SD HAC P01 BB
- Measurement SW: DASY52, Version 52.8 (7); SEMCAD X Version 14.6.10 (7164)

UAT_GSM850 E-Field measurement/Voice_ch 190/Hearing Aid Compatibility Test

(101x101x1): Interpolated grid: dx=0.5000 mm, dy=0.5000 mm

Device Reference Point: 0, 0, -6.3 mm

Reference Value = 81.13 V/m; Power Drift = -0.01 dB

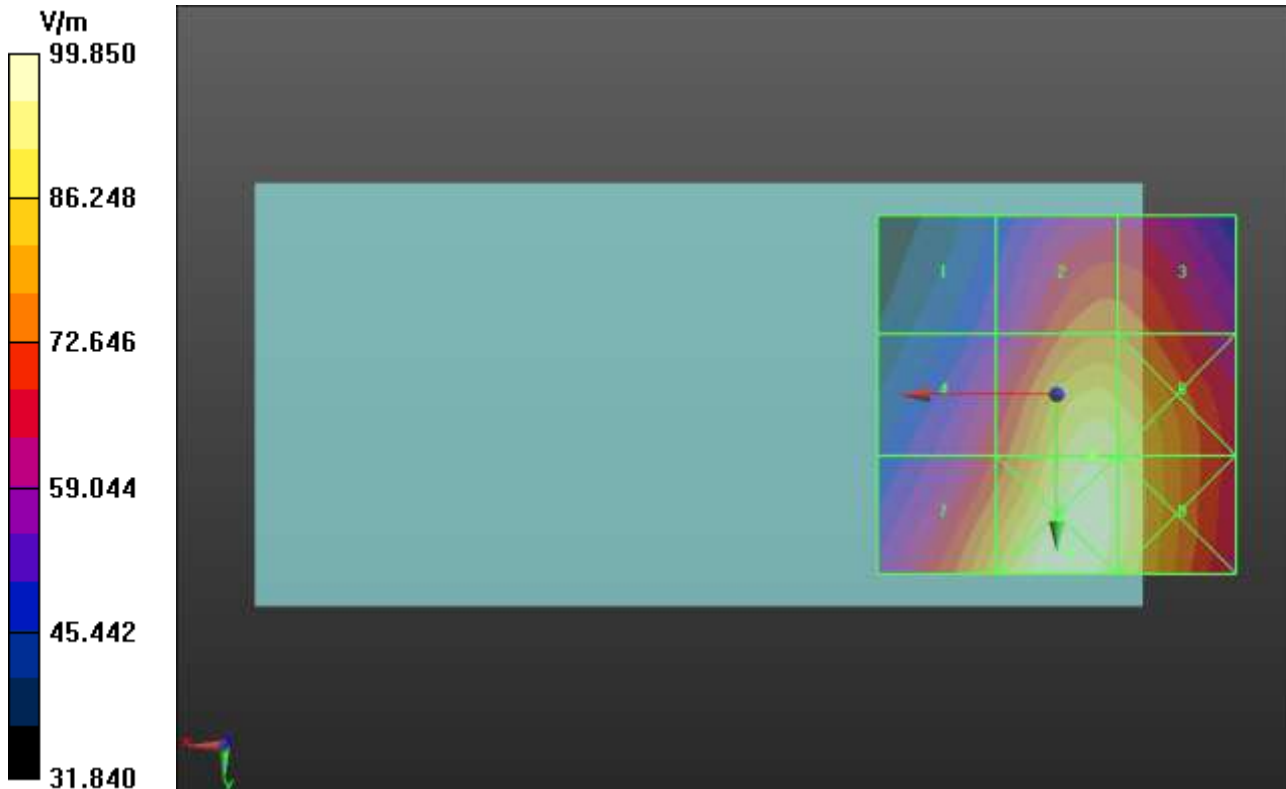
Applied MIF = 3.63 dB

RF audio interference level = 39.52 dBV/m

Emission category: M4

MIF scaled E-field

| | | |
|----------------------------------------|----------------------------------------|----------------------------------------|
| Grid 1 M4 34.86 dBV/m | Grid 2 M4 37.72 dBV/m | Grid 3 M4 37.66 dBV/m |
| Grid 4 M4 36.81 dBV/m | Grid 5 M4 39.52 dBV/m | Grid 6 M4 39.22 dBV/m |
| Grid 7 M4 38.64 dBV/m | Grid 8 M4 39.99 dBV/m | Grid 9 M4 39.43 dBV/m |



HAC-RF Emission

Communication System: UID 10021 - CAA, GSM-FDD (TDMA, GMSK); Frequency: 848.6 MHz; Duty Cycle: 1:8.6896

Phantom section: RF Section

DASY5 Configuration:

- Probe: ER3DV6 - SN2509; ConvF(1, 1, 1); Calibrated: 5/29/2013;
- Sensor-Surface: (Fix Surface)
- Electronics: DAE4 Sn1258; Calibrated: 3/6/2013
- Phantom: HAC Test Arch with AMCC; Type: SD HAC P01 BB
- Measurement SW: DASY52, Version 52.8 (7); SEMCAD X Version 14.6.10 (7164)

UAT_GSM850 E-Field measurement/Voice_ch 251/Hearing Aid Compatibility Test

(101x101x1): Interpolated grid: dx=0.5000 mm, dy=0.5000 mm

Device Reference Point: 0, 0, -6.3 mm

Reference Value = 72.29 V/m; Power Drift = -0.03 dB

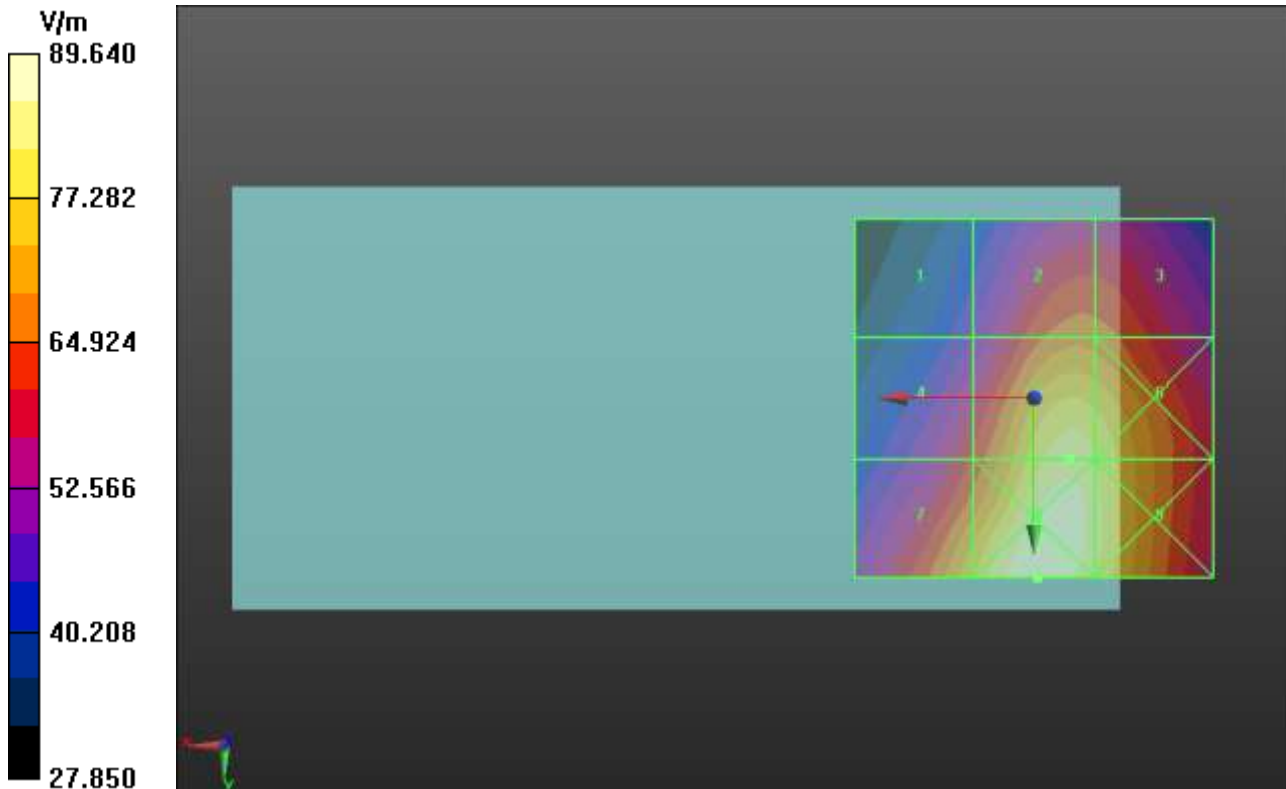
Applied MIF = 3.63 dB

RF audio interference level = 38.48 dBV/m

Emission category: M4

MIF scaled E-field

| | | |
|----------------------------------------|----------------------------------------|----------------------------------------|
| Grid 1 M4 33.81 dBV/m | Grid 2 M4 36.63 dBV/m | Grid 3 M4 36.56 dBV/m |
| Grid 4 M4 35.85 dBV/m | Grid 5 M4 38.48 dBV/m | Grid 6 M4 38.21 dBV/m |
| Grid 7 M4 37.74 dBV/m | Grid 8 M4 39.05 dBV/m | Grid 9 M4 38.42 dBV/m |



HAC-RF Emission

Communication System: UID 10021 - CAA, GSM-FDD (TDMA, GMSK); Frequency: 1850.2 MHz; Duty Cycle: 1:8.6896

Phantom section: RF Section

DASY5 Configuration:

- Probe: ER3DV6 - SN2509; ConvF(1, 1, 1); Calibrated: 5/29/2013;
- Sensor-Surface: (Fix Surface)
- Electronics: DAE4 Sn1258; Calibrated: 3/6/2013
- Phantom: HAC Test Arch with AMCC; Type: SD HAC P01 BB
- Measurement SW: DASY52, Version 52.8 (7); SEMCAD X Version 14.6.10 (7164)

UAT_GSM1900 E-Field measurement/Voice_ch 512/Hearing Aid Compatibility Test (101x101x1): Interpolated grid: dx=0.5000 mm, dy=0.5000 mm

Device Reference Point: 0, 0, -6.3 mm

Reference Value = 32.94 V/m; Power Drift = -0.03 dB

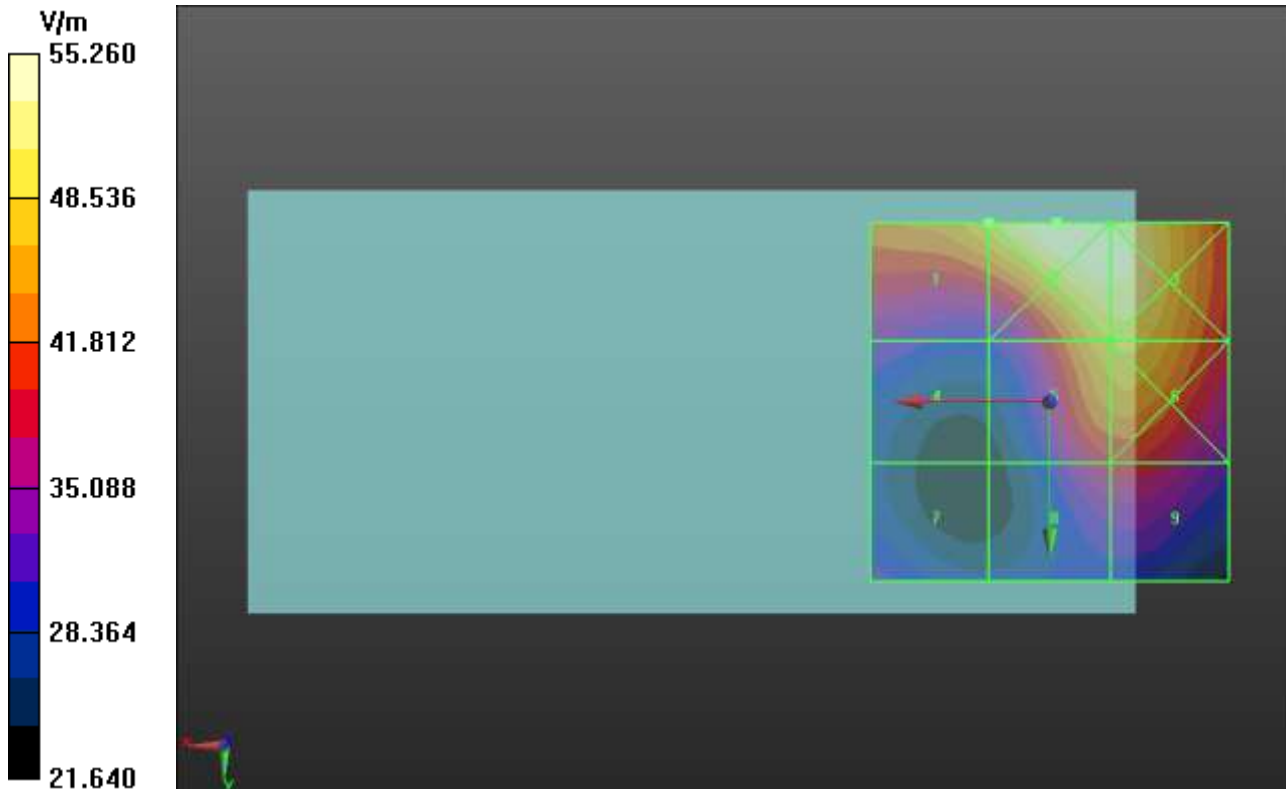
Applied MIF = 3.63 dB

RF audio interference level = 33.82 dBV/m

Emission category: **M3**

MIF scaled E-field

| | | |
|---------------------------------|---------------------------------|---------------------------------|
| Grid 1 M3 33.82 dBV/m | Grid 2 M3 34.85 dBV/m | Grid 3 M3 34.67 dBV/m |
| Grid 4 M3 30.43 dBV/m | Grid 5 M3 33.76 dBV/m | Grid 6 M3 33.87 dBV/m |
| Grid 7 M3 30.11 dBV/m | Grid 8 M3 31.82 dBV/m | Grid 9 M3 31.94 dBV/m |



HAC-RF Emission

Communication System: UID 10021 - CAA, GSM-FDD (TDMA, GMSK); Frequency: 1880 MHz; Duty Cycle: 1:8.6896

Phantom section: RF Section

DASY5 Configuration:

- Probe: ER3DV6 - SN2509; ConvF(1, 1, 1); Calibrated: 5/29/2013;
- Sensor-Surface: (Fix Surface)
- Electronics: DAE4 Sn1258; Calibrated: 3/6/2013
- Phantom: HAC Test Arch with AMCC; Type: SD HAC P01 BB
- Measurement SW: DASY52, Version 52.8 (7); SEMCAD X Version 14.6.10 (7164)

UAT_GSM1900 E-Field measurement/Voice_ch 661/Hearing Aid Compatibility Test

(101x101x1): Interpolated grid: dx=0.5000 mm, dy=0.5000 mm

Device Reference Point: 0, 0, -6.3 mm

Reference Value = 34.96 V/m; Power Drift = -0.11 dB

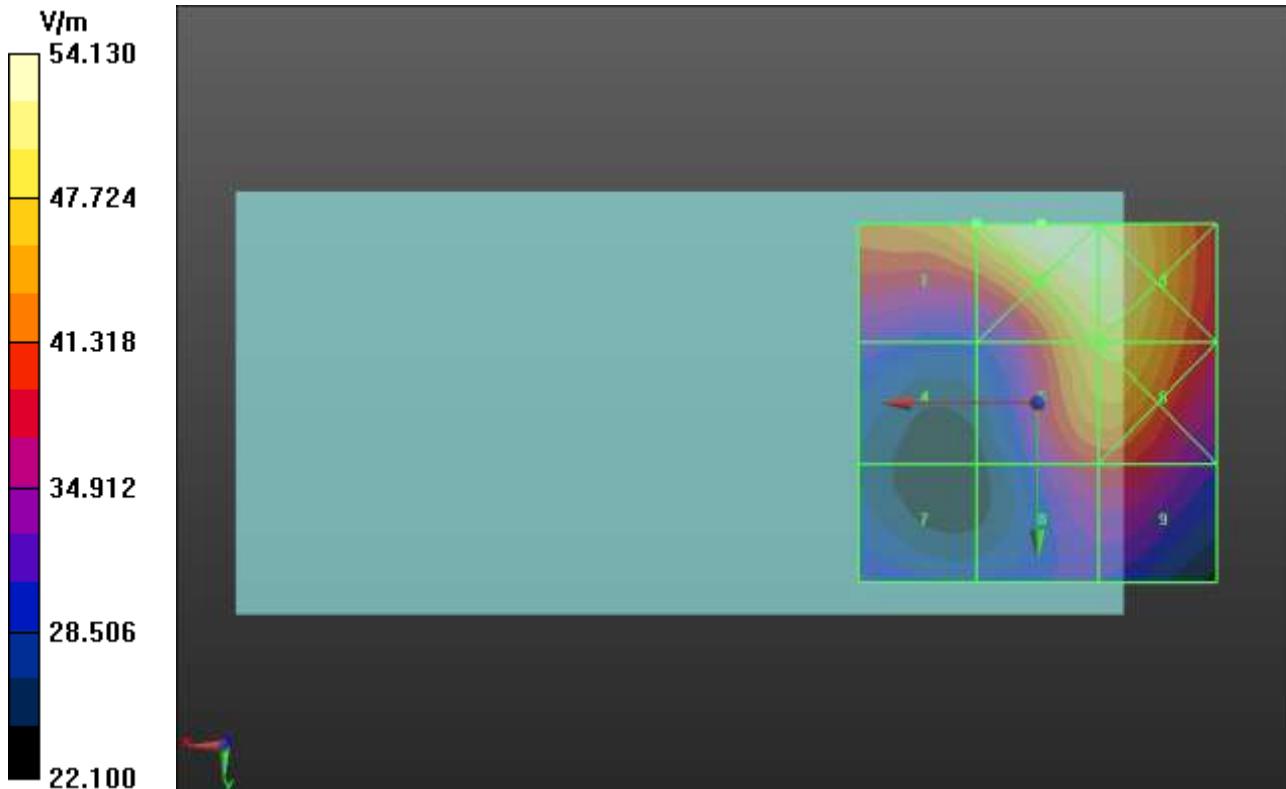
Applied MIF = 3.63 dB

RF audio interference level = 33.73 dBV/m

Emission category: **M3**

MIF scaled E-field

| | | |
|----------------------------------------|----------------------------------------|----------------------------------------|
| Grid 1 M3 33.73 dBV/m | Grid 2 M3 34.67 dBV/m | Grid 3 M3 34.42 dBV/m |
| Grid 4 M3 30.25 dBV/m | Grid 5 M3 33.69 dBV/m | Grid 6 M3 33.78 dBV/m |
| Grid 7 M4 29.96 dBV/m | Grid 8 M3 31.94 dBV/m | Grid 9 M3 32.01 dBV/m |



HAC-RF Emission

Communication System: UID 10021 - CAA, GSM-FDD (TDMA, GMSK); Frequency: 1909.8 MHz; Duty Cycle: 1:8.6896

Phantom section: RF Section

DASY5 Configuration:

- Probe: ER3DV6 - SN2509; ConvF(1, 1, 1); Calibrated: 5/29/2013;
- Sensor-Surface: (Fix Surface)
- Electronics: DAE4 Sn1258; Calibrated: 3/6/2013
- Phantom: HAC Test Arch with AMCC; Type: SD HAC P01 BB
- Measurement SW: DASY52, Version 52.8 (7); SEMCAD X Version 14.6.10 (7164)

UAT_GSM1900 E-Field measurement/Voice_ch 810/Hearing Aid Compatibility Test (101x101x1): Interpolated grid: dx=0.5000 mm, dy=0.5000 mm

Device Reference Point: 0, 0, -6.3 mm

Reference Value = 36.33 V/m; Power Drift = -0.06 dB

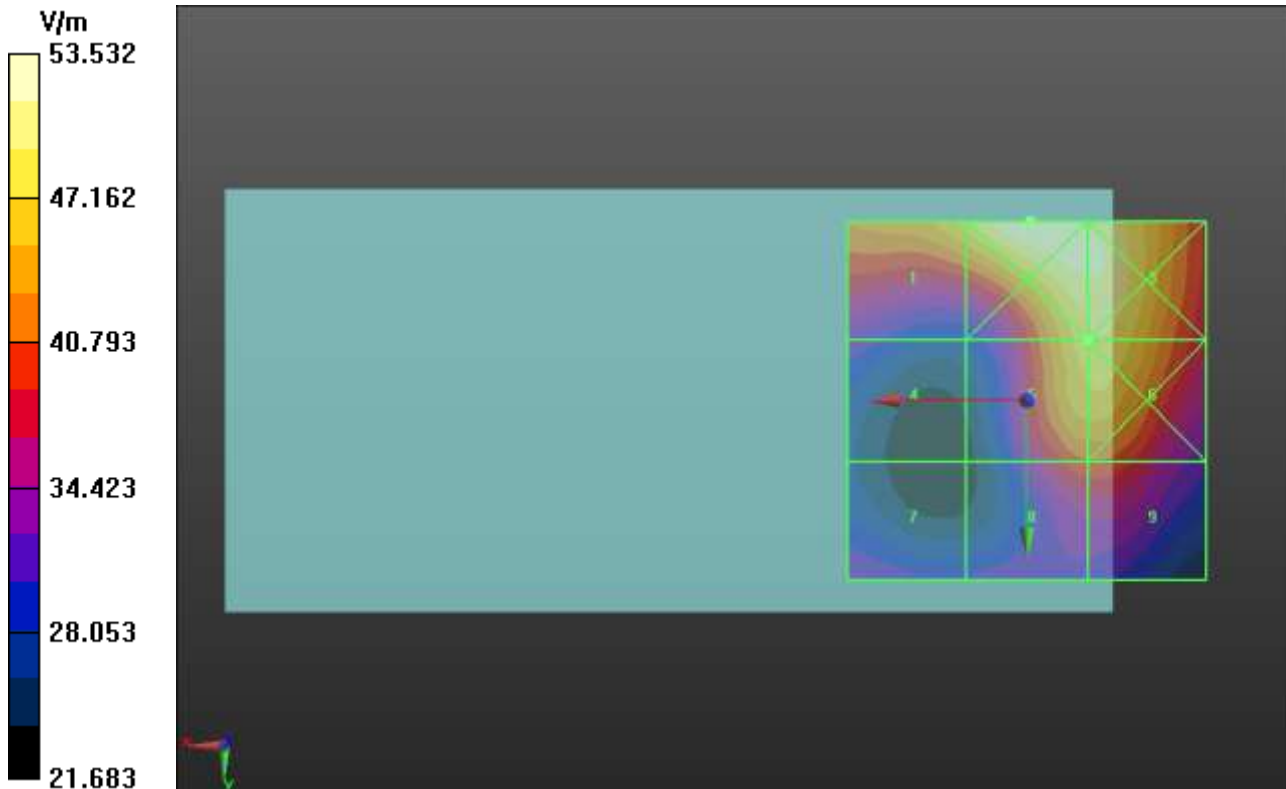
Applied MIF = 3.63 dB

RF audio interference level = 33.74 dBV/m

Emission category: **M3**

MIF scaled E-field

| | | |
|---------------------------------|---------------------------------|---------------------------------|
| Grid 1 M3 33.67 dBV/m | Grid 2 M3 34.57 dBV/m | Grid 3 M3 34.34 dBV/m |
| Grid 4 M3 30.14 dBV/m | Grid 5 M3 33.74 dBV/m | Grid 6 M3 33.83 dBV/m |
| Grid 7 M3 30.37 dBV/m | Grid 8 M3 32.16 dBV/m | Grid 9 M3 32.18 dBV/m |



HAC-RF Emission

Communication System: UID 10021 - CAA, GSM-FDD (TDMA, GMSK); Frequency: 824.2 MHz; Duty Cycle: 1:8.6896

Phantom section: RF Section

DASY5 Configuration:

- Probe: ER3DV6 - SN2509; ConvF(1, 1, 1); Calibrated: 5/29/2013;
- Sensor-Surface: (Fix Surface)
- Electronics: DAE4 Sn1258; Calibrated: 3/6/2013
- Phantom: HAC Test Arch with AMCC; Type: SD HAC P01 BB
- Measurement SW: DASY52, Version 52.8 (7); SEMCAD X Version 14.6.10 (7164)

LAT_GSM850 E-Field measurement/Voice_ch 128/Hearing Aid Compatibility Test

(101x101x1): Interpolated grid: dx=0.5000 mm, dy=0.5000 mm

Device Reference Point: 0, 0, -6.3 mm

Reference Value = 58.61 V/m; Power Drift = -0.03 dB

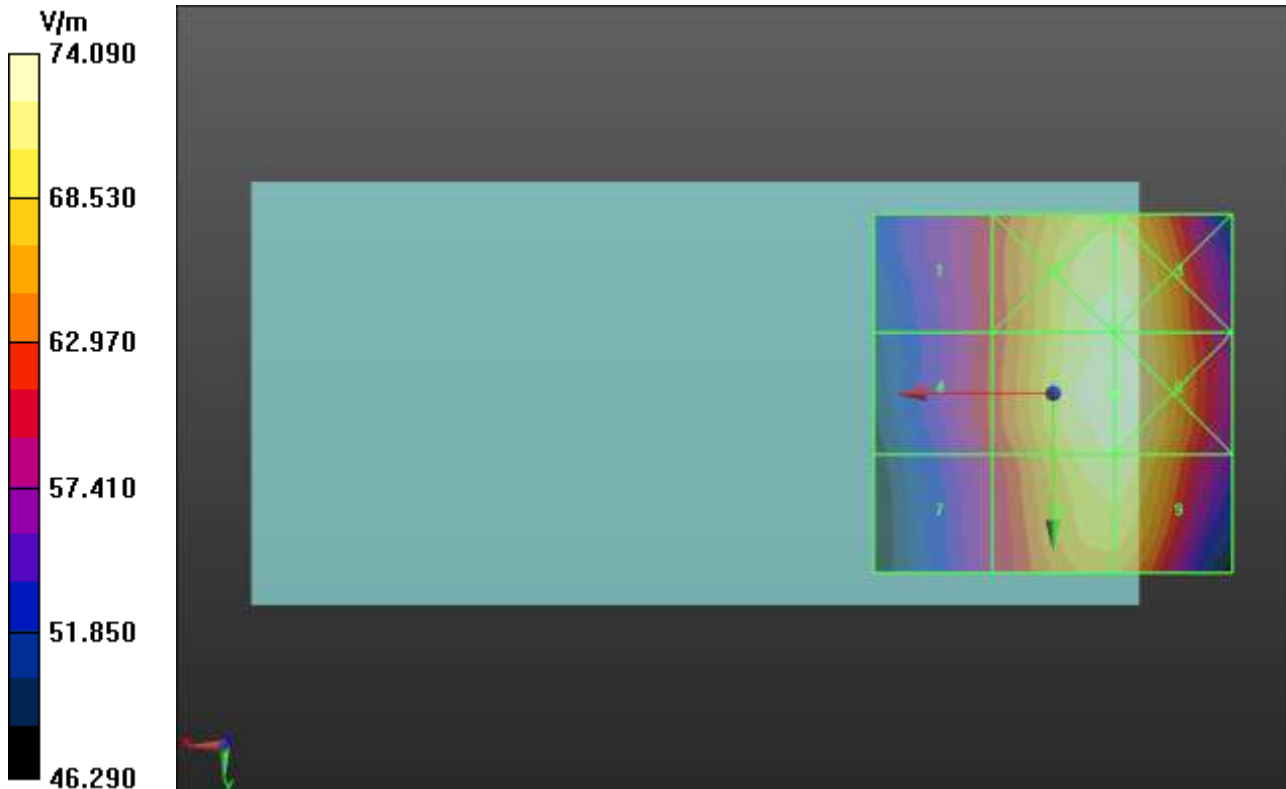
Applied MIF = 3.63 dB

RF audio interference level = 37.40 dBV/m

Emission category: M4

MIF scaled E-field

| | | |
|----------------------------------------|----------------------------------------|----------------------------------------|
| Grid 1 M4 35.79 dBV/m | Grid 2 M4 37.3 dBV/m | Grid 3 M4 37.3 dBV/m |
| Grid 4 M4 35.84 dBV/m | Grid 5 M4 37.4 dBV/m | Grid 6 M4 37.4 dBV/m |
| Grid 7 M4 35.59 dBV/m | Grid 8 M4 37.16 dBV/m | Grid 9 M4 37.16 dBV/m |



HAC-RF Emission

Communication System: UID 10021 - CAA, GSM-FDD (TDMA, GMSK); Frequency: 836.6 MHz; Duty Cycle: 1:8.6896

Phantom section: RF Section

DASY5 Configuration:

- Probe: ER3DV6 - SN2509; ConvF(1, 1, 1); Calibrated: 5/29/2013;
- Sensor-Surface: (Fix Surface)
- Electronics: DAE4 Sn1258; Calibrated: 3/6/2013
- Phantom: HAC Test Arch with AMCC; Type: SD HAC P01 BB
- Measurement SW: DASY52, Version 52.8 (7); SEMCAD X Version 14.6.10 (7164)

LAT_GSM850 E-Field measurement/Voice_ch 190/Hearing Aid Compatibility Test

(101x101x1): Interpolated grid: dx=0.5000 mm, dy=0.5000 mm

Device Reference Point: 0, 0, -6.3 mm

Reference Value = 63.04 V/m; Power Drift = 0.21 dB

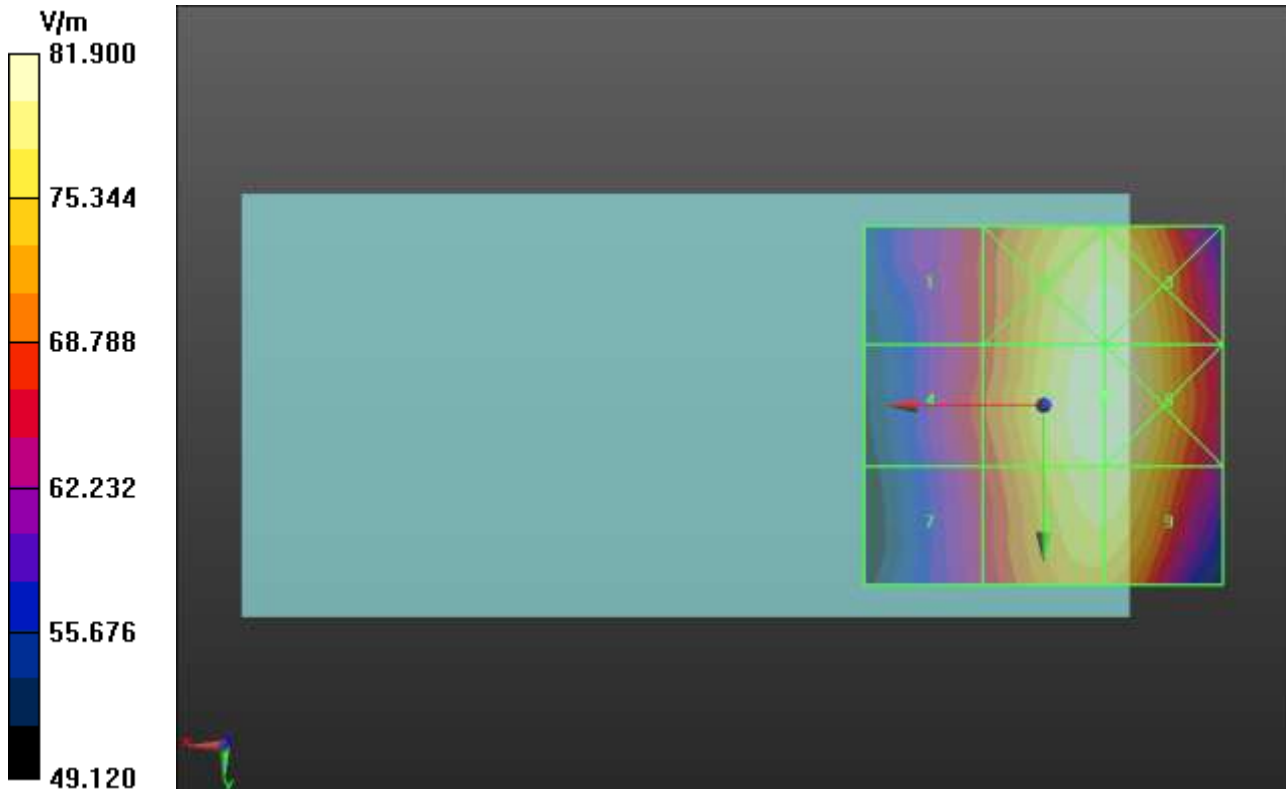
Applied MIF = 3.63 dB

RF audio interference level = 38.27 dBV/m

Emission category: M4

MIF scaled E-field

| | | |
|----------------------------------------|----------------------------------------|----------------------------------------|
| Grid 1 M4 36.56 dBV/m | Grid 2 M4 38.17 dBV/m | Grid 3 M4 38.17 dBV/m |
| Grid 4 M4 36.7 dBV/m | Grid 5 M4 38.27 dBV/m | Grid 6 M4 38.27 dBV/m |
| Grid 7 M4 36.47 dBV/m | Grid 8 M4 38.06 dBV/m | Grid 9 M4 38.06 dBV/m |



HAC-RF Emission

Communication System: UID 10021 - CAA, GSM-FDD (TDMA, GMSK); Frequency: 848.6 MHz; Duty Cycle: 1:8.6896

Phantom section: RF Section

DASY5 Configuration:

- Probe: ER3DV6 - SN2509; ConvF(1, 1, 1); Calibrated: 5/29/2013;
- Sensor-Surface: (Fix Surface)
- Electronics: DAE4 Sn1258; Calibrated: 3/6/2013
- Phantom: HAC Test Arch with AMCC; Type: SD HAC P01 BB
- Measurement SW: DASY52, Version 52.8 (7); SEMCAD X Version 14.6.10 (7164)

LAT_GSM850 E-Field measurement/Voice_ch 251/Hearing Aid Compatibility Test

(101x101x1): Interpolated grid: dx=0.5000 mm, dy=0.5000 mm

Device Reference Point: 0, 0, -6.3 mm

Reference Value = 67.63 V/m; Power Drift = -0.09 dB

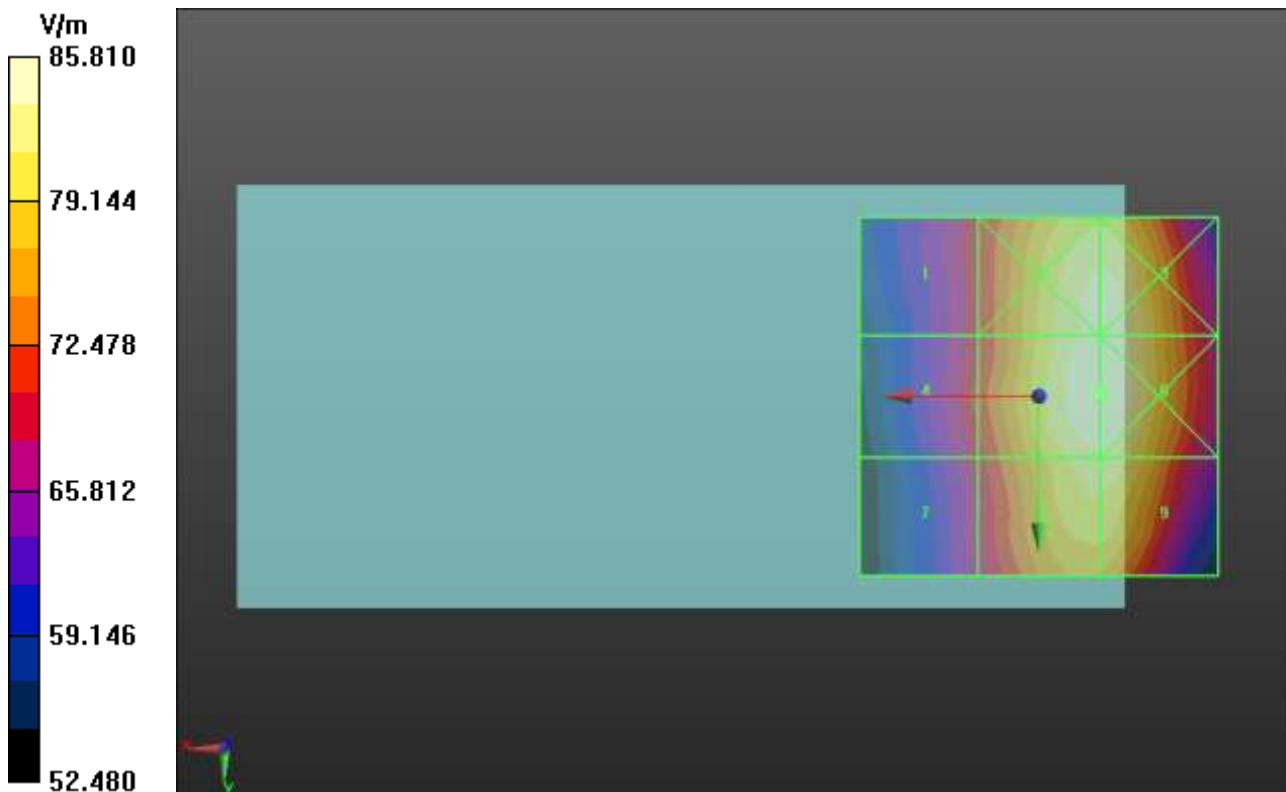
Applied MIF = 3.63 dB

RF audio interference level = 38.67 dBV/m

Emission category: M4

MIF scaled E-field

| | | |
|----------------------------------------|----------------------------------------|----------------------------------------|
| Grid 1 M4 36.95 dBV/m | Grid 2 M4 38.58 dBV/m | Grid 3 M4 38.58 dBV/m |
| Grid 4 M4 37.05 dBV/m | Grid 5 M4 38.67 dBV/m | Grid 6 M4 38.67 dBV/m |
| Grid 7 M4 36.83 dBV/m | Grid 8 M4 38.41 dBV/m | Grid 9 M4 38.41 dBV/m |



HAC-RF Emission

Communication System: UID 10021 - CAA, GSM-FDD (TDMA, GMSK); Frequency: 1850.2 MHz; Duty Cycle: 1:8.6896

Phantom section: RF Section

DASY5 Configuration:

- Probe: ER3DV6 - SN2509; ConvF(1, 1, 1); Calibrated: 5/29/2013;
- Sensor-Surface: (Fix Surface)
- Electronics: DAE4 Sn1258; Calibrated: 3/6/2013
- Phantom: HAC Test Arch with AMCC; Type: SD HAC P01 BB
- Measurement SW: DASY52, Version 52.8 (7); SEMCAD X Version 14.6.10 (7164)

LAT_GSM1900 E-Field measurement/Voice_ch 512/Hearing Aid Compatibility Test (101x101x1):

Interpolated grid: dx=0.5000 mm, dy=0.5000 mm

Device Reference Point: 0, 0, -6.3 mm

Reference Value = 30.87 V/m; Power Drift = 0.11 dB

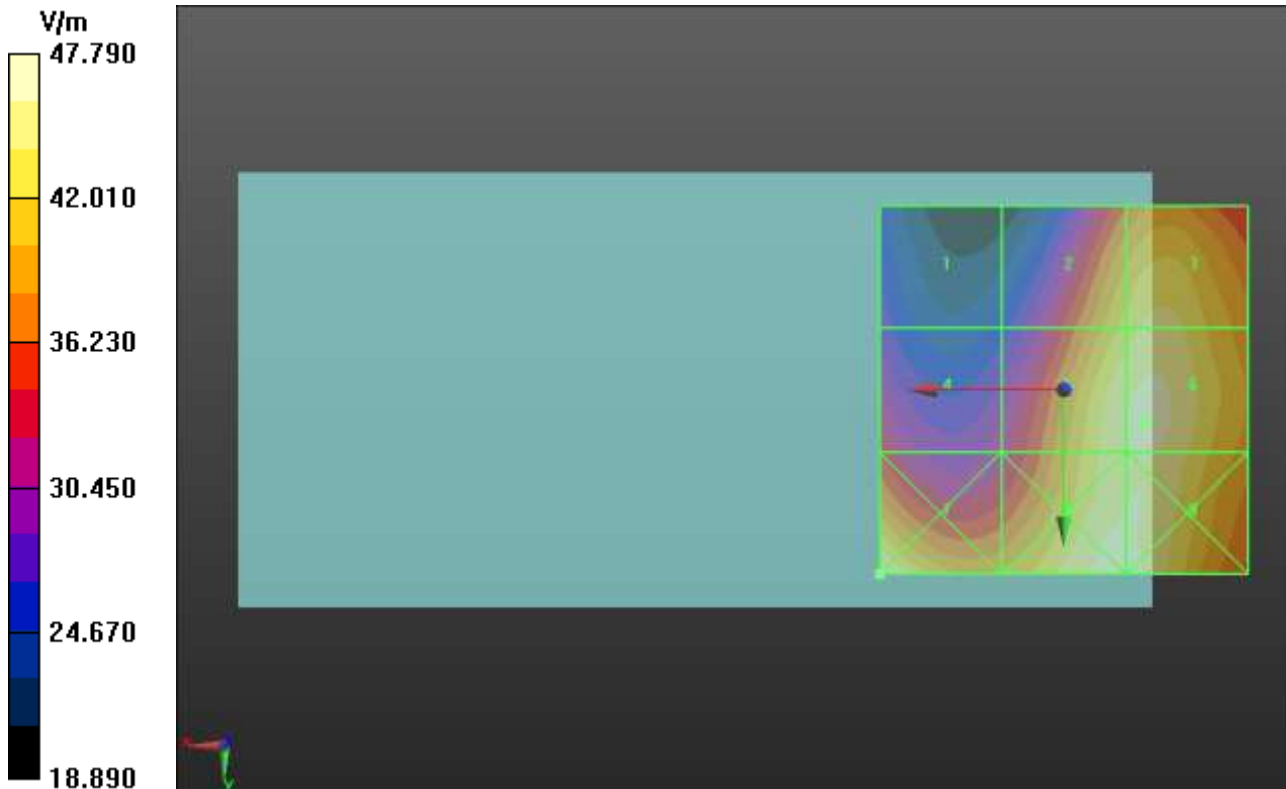
Applied MIF = 3.63 dB

RF audio interference level = 33.36 dBV/m

Emission category: **M3**

MIF scaled E-field

| | | |
|----------------------------------------|----------------------------------------|----------------------------------------|
| Grid 1 M4 29.02 dBV/m | Grid 2 M3 32.66 dBV/m | Grid 3 M3 32.99 dBV/m |
| Grid 4 M3 30.79 dBV/m | Grid 5 M3 33.26 dBV/m | Grid 6 M3 33.36 dBV/m |
| Grid 7 M3 33.59 dBV/m | Grid 8 M3 33.34 dBV/m | Grid 9 M3 33.34 dBV/m |



HAC-RF Emission

Communication System: UID 10021 - CAA, GSM-FDD (TDMA, GMSK); Frequency: 1880 MHz; Duty Cycle: 1:8.6896

Phantom section: RF Section

DASY5 Configuration:

- Probe: ER3DV6 - SN2509; ConvF(1, 1, 1); Calibrated: 5/29/2013;
- Sensor-Surface: (Fix Surface)
- Electronics: DAE4 Sn1258; Calibrated: 3/6/2013
- Phantom: HAC Test Arch with AMCC; Type: SD HAC P01 BB
- Measurement SW: DASY52, Version 52.8 (7); SEMCAD X Version 14.6.10 (7164)

LAT_GSM1900 E-Field measurement/Voice_ch 661/Hearing Aid Compatibility Test (101x101x1): Interpolated grid: dx=0.5000 mm, dy=0.5000 mm

Device Reference Point: 0, 0, -6.3 mm

Reference Value = 28.88 V/m; Power Drift = -0.03 dB

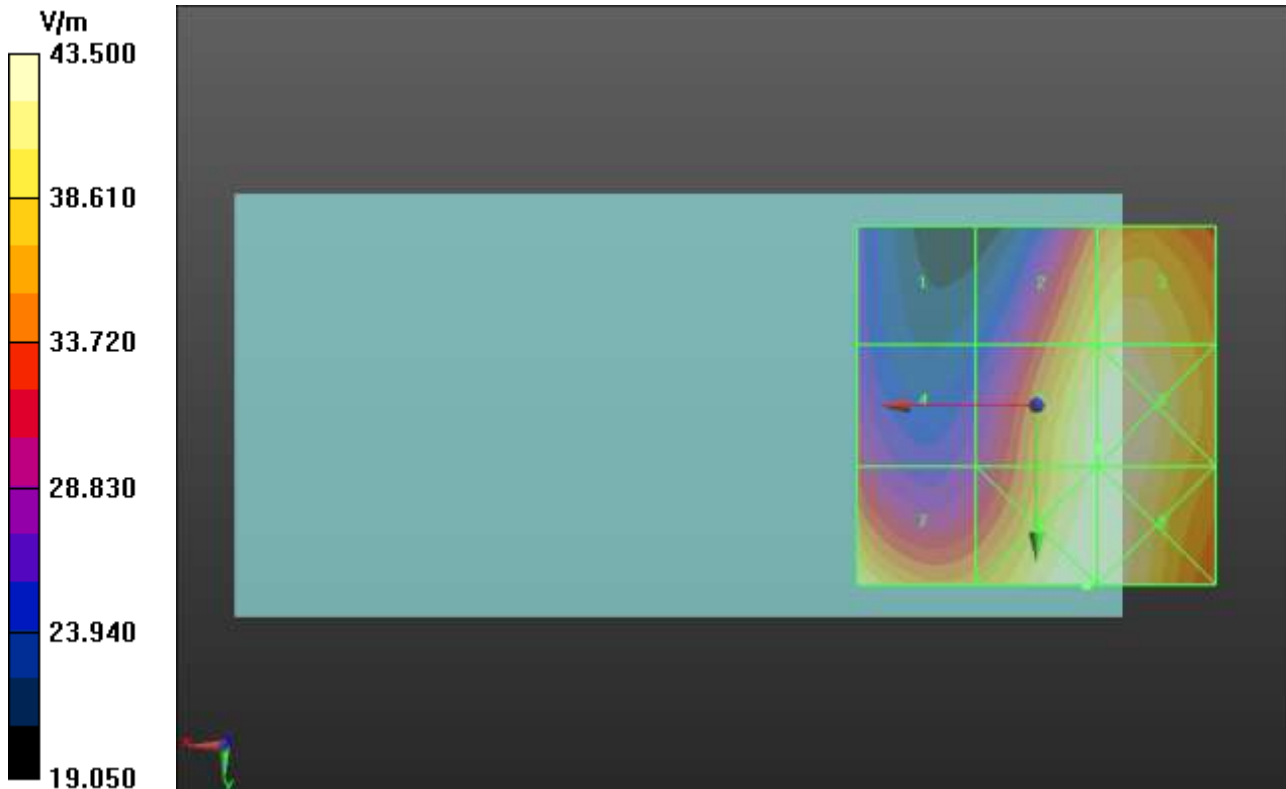
Applied MIF = 3.63 dB

RF audio interference level = 32.62 dBV/m

Emission category: **M3**

MIF scaled E-field

| | | |
|---------------------------------|---------------------------------|---------------------------------|
| Grid 1 M4 28.69 dBV/m | Grid 2 M3 32.1 dBV/m | Grid 3 M3 32.44 dBV/m |
| Grid 4 M4 29.94 dBV/m | Grid 5 M3 32.62 dBV/m | Grid 6 M3 32.76 dBV/m |
| Grid 7 M3 32.41 dBV/m | Grid 8 M3 32.77 dBV/m | Grid 9 M3 32.74 dBV/m |



HAC-RF Emission

Communication System: UID 10021 - CAA, GSM-FDD (TDMA, GMSK); Frequency: 1909.8 MHz; Duty Cycle: 1:8.6896

Phantom section: RF Section

DASY5 Configuration:

- Probe: ER3DV6 - SN2509; ConvF(1, 1, 1); Calibrated: 5/29/2013;
- Sensor-Surface: (Fix Surface)
- Electronics: DAE4 Sn1258; Calibrated: 3/6/2013
- Phantom: HAC Test Arch with AMCC; Type: SD HAC P01 BB
- Measurement SW: DASY52, Version 52.8 (7); SEMCAD X Version 14.6.10 (7164)

LAT_GSM1900 E-Field measurement/Voice_ch 810/Hearing Aid Compatibility Test (101x101x1):

Interpolated grid: dx=0.5000 mm, dy=0.5000 mm

Device Reference Point: 0, 0, -6.3 mm

Reference Value = 30.05 V/m; Power Drift = -0.01 dB

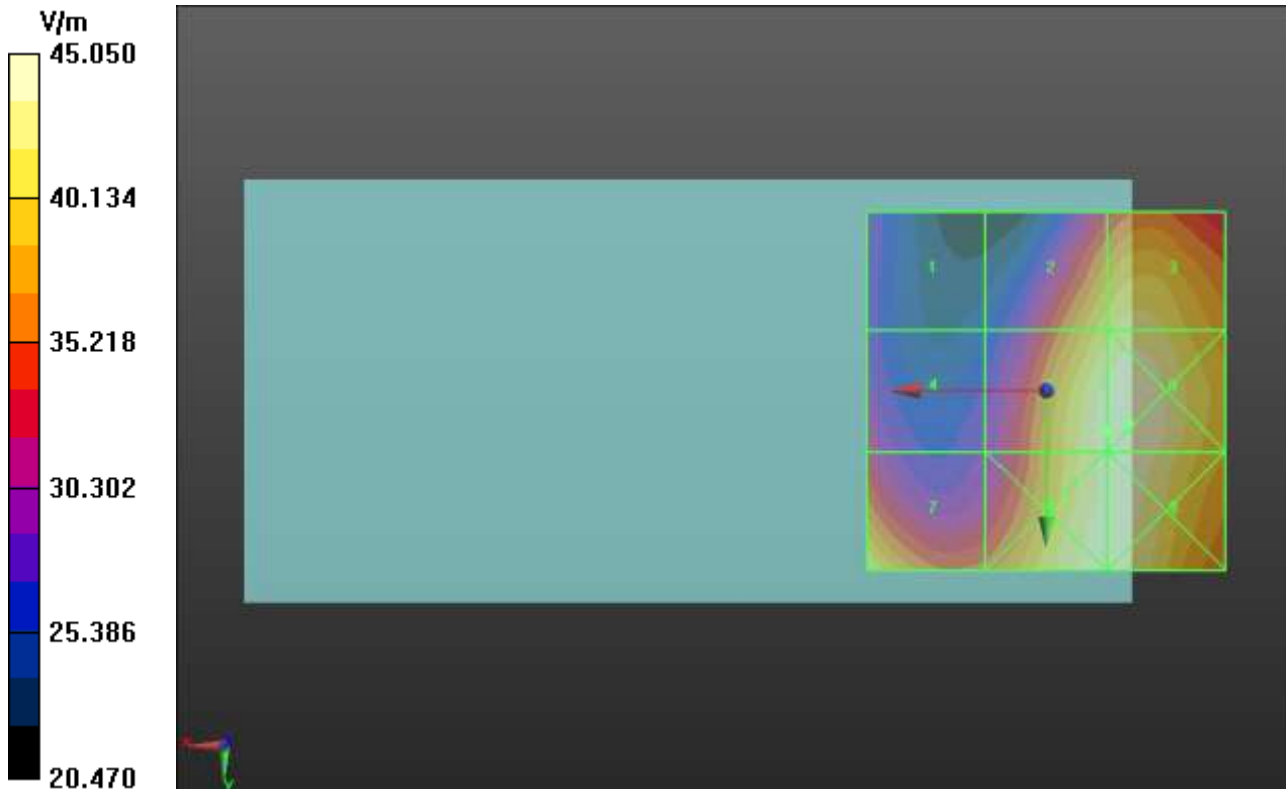
Applied MIF = 3.63 dB

RF audio interference level = 32.94 dBV/m

Emission category: **M3**

MIF scaled E-field

| | | |
|---------------------------------|---------------------------------|---------------------------------|
| Grid 1 M4 29.23 dBV/m | Grid 2 M3 32.31 dBV/m | Grid 3 M3 32.61 dBV/m |
| Grid 4 M3 30.16 dBV/m | Grid 5 M3 32.94 dBV/m | Grid 6 M3 33.07 dBV/m |
| Grid 7 M3 32.66 dBV/m | Grid 8 M3 32.89 dBV/m | Grid 9 M3 32.99 dBV/m |





Accredited by the Swiss Accreditation Service (SAS)
 The Swiss Accreditation Service is one of the signatories to the EA
 Multilateral Agreement for the recognition of calibration certificates

Accreditation No.: **SCS 108**

Client **UL CCS USA**

Certificate No: **ER3-2509_May13**

CALIBRATION CERTIFICATE

Object **ER3DV6 - SN:2509**

Calibration procedure(s) **QA CAL-02.v6, QA CAL-25.v4
 Calibration procedure for E-field probes optimized for close near field
 evaluations in air**

Calibration date: **May 29, 2013**

This calibration certificate documents the traceability to national standards, which realize the physical units of measurements (SI).
 The measurements and the uncertainties with confidence probability are given on the following pages and are part of the certificate.

All calibrations have been conducted in the closed laboratory facility: environment temperature (22 ± 3)°C and humidity < 70%.

Calibration Equipment used (M&TE critical for calibration)

| Primary Standards | ID | Cal Date (Certificate No.) | Scheduled Calibration |
|----------------------------|-----------------|-----------------------------------|------------------------|
| Power meter E4419B | GB41293874 | 04-Apr-13 (No. 217-01733) | Apr-14 |
| Power sensor E4412A | MY41498087 | 04-Apr-13 (No. 217-01733) | Apr-14 |
| Reference 3 dB Attenuator | SN: S5054 (3c) | 04-Apr-13 (No. 217-01737) | Apr-14 |
| Reference 20 dB Attenuator | SN: S5277 (20x) | 04-Apr-13 (No. 217-01735) | Apr-14 |
| Reference 30 dB Attenuator | SN: S5129 (30b) | 04-Apr-13 (No. 217-01738) | Apr-14 |
| Reference Probe ER3DV6 | SN: 2328 | 12-Oct-12 (No. ER3-2328_Oct12) | Oct-13 |
| DAE4 | SN: 789 | 15-May-13 (No. DAE4-789_May13) | May-14 |
| Secondary Standards | ID | Check Date (in house) | Scheduled Check |
| RF generator HP 8648C | US3642U01700 | 4-Aug-99 (in house check Apr-13) | In house check: Apr-15 |
| Network Analyzer HP 8753E | US37390585 | 18-Oct-01 (in house check Oct-12) | In house check: Oct-13 |

| | | | |
|----------------|-------------------------------|------------------------------------------|---------------|
| Calibrated by: | Name Jeton Kastrati | Function Laboratory Technician | Signature |
| Approved by: | Name Katja Pokovic | Function Technical Manager | |

Issued: May 29, 2013

This calibration certificate shall not be reproduced except in full without written approval of the laboratory.



Accredited by the Swiss Accreditation Service (SAS)

Accreditation No.: **SCS 108**

The Swiss Accreditation Service is one of the signatories to the EA
Multilateral Agreement for the recognition of calibration certificates

Glossary:

| | |
|--------------------------|---------------------------------------------------------------------------------------------------------------------------------------------------------|
| NORM _{x,y,z} | sensitivity in free space |
| DCP | diode compression point |
| CF | crest factor (1/duty_cycle) of the RF signal |
| A, B, C, D | modulation dependent linearization parameters |
| Polarization ϕ | ϕ rotation around probe axis |
| Polarization ϑ | ϑ rotation around an axis that is in the plane normal to probe axis (at measurement center), i.e., $\vartheta = 0$ is normal to probe axis |
| Connector Angle | information used in DASY system to align probe sensor X to the robot coordinate system |

Calibration is Performed According to the Following Standards:

- a) IEEE Std 1309-2005, " IEEE Standard for calibration of electromagnetic field sensors and probes, excluding antennas, from 9 kHz to 40 GHz", December 2005
- b) CTIA Test Plan for Hearing Aid Compatibility, April 2010.

Methods Applied and Interpretation of Parameters:

- *NORM_{x,y,z}*: Assessed for E-field polarization $\vartheta = 0$ for XY sensors and $\vartheta = 90$ for Z sensor ($f \leq 900$ MHz in TEM-cell; $f > 1800$ MHz: R22 waveguide).
- *NORM(f)_{x,y,z}* = *NORM_{x,y,z}* * *frequency_response* (see Frequency Response Chart).
- *DCP_{x,y,z}*: DCP are numerical linearization parameters assessed based on the data of power sweep with CW signal (no uncertainty required). DCP does not depend on frequency nor media.
- *PAR*: PAR is the Peak to Average Ratio that is not calibrated but determined based on the signal characteristics
- *A_{x,y,z}; B_{x,y,z}; C_{x,y,z}; D_{x,y,z}; VR_{x,y,z}*: A, B, C, D are numerical linearization parameters assessed based on the data of power sweep for specific modulation signal. The parameters do not depend on frequency nor media. VR is the maximum calibration range expressed in RMS voltage across the diode.
- *Spherical isotropy (3D deviation from isotropy)*: in a locally homogeneous field realized using an open waveguide setup.
- *Sensor Offset*: The sensor offset corresponds to the offset of virtual measurement center from the probe tip (on probe axis). No tolerance required.
- *Connector Angle*: The angle is assessed using the information gained by determining the *NORM_x* (no uncertainty required).

Probe ER3DV6

SN:2509

Manufactured: November 2, 2009
Calibrated: May 29, 2013

Calibrated for DASY/EASY Systems
(Note: non-compatible with DASY2 system!)

DASY/EASY - Parameters of Probe: ER3DV6 - SN:2509

Basic Calibration Parameters

| | Sensor X | Sensor Y | Sensor Z | Unc (k=2) |
|----------------------------------------------|----------|----------|----------|---------------|
| Norm ($\mu\text{V}/(\text{V}/\text{m})^2$) | 1.97 | 1.55 | 2.01 | $\pm 10.1 \%$ |
| DCP (mV) ^B | 102.2 | 96.9 | 96.9 | |

Modulation Calibration Parameters

| UID | Communication System Name | | A dB | B dB $\sqrt{\mu\text{V}}$ | C | D dB | VR mV | Unc ^E (k=2) |
|-----------|-----------------------------------------------|---|---------|------------------------------|------|---------|----------|---------------------------|
| 0 | CW | X | 0.0 | 0.0 | 1.0 | 0.00 | 186.4 | $\pm 3.5 \%$ |
| | | Y | 0.0 | 0.0 | 1.0 | | 151.0 | |
| | | Z | 0.0 | 0.0 | 1.0 | | 161.4 | |
| 10011-CAA | UMTS-FDD (WCDMA) | X | 3.15 | 66.3 | 18.4 | 2.91 | 110.2 | $\pm 0.7 \%$ |
| | | Y | 3.03 | 64.5 | 16.9 | | 120.7 | |
| | | Z | 2.99 | 64.1 | 16.2 | | 129.8 | |
| 10012-CAA | IEEE 802.11b WiFi 2.4 GHz (DSSS, 1 Mbps) | X | 2.93 | 68.4 | 18.8 | 1.87 | 113.3 | $\pm 0.9 \%$ |
| | | Y | 2.71 | 65.0 | 16.2 | | 123.9 | |
| | | Z | 2.36 | 63.3 | 15.0 | | 132.4 | |
| 10013-CAA | IEEE 802.11g WiFi 2.4 GHz (DSSS-OFDM, 6 Mbps) | X | 11.39 | 70.4 | 23.0 | 9.46 | 110.9 | $\pm 4.9 \%$ |
| | | Y | 12.27 | 71.4 | 23.4 | | 131.3 | |
| | | Z | 10.99 | 69.6 | 22.4 | | 129.7 | |
| 10021-DAA | GSM-FDD (TDMA, GMSK) | X | 27.86 | 99.4 | 28.5 | 9.39 | 148.7 | $\pm 2.2 \%$ |
| | | Y | 29.93 | 99.7 | 29.8 | | 132.4 | |
| | | Z | 15.75 | 93.1 | 25.9 | | 142.3 | |
| 10081-CAA | CDMA2000 (1xRTT, RC3) | X | 3.96 | 66.2 | 18.8 | 3.97 | 110.2 | $\pm 0.9 \%$ |
| | | Y | 3.91 | 64.9 | 17.7 | | 118.0 | |
| | | Z | 3.84 | 64.8 | 17.4 | | 128.5 | |
| 10103-CAB | LTE-TDD (SC-FDMA, 100% RB, 20 MHz, QPSK) | X | 15.06 | 86.1 | 31.7 | 9.29 | 123.9 | $\pm 3.3 \%$ |
| | | Y | 11.89 | 75.9 | 25.6 | | 97.9 | |
| | | Z | 10.55 | 76.0 | 26.2 | | 136.6 | |
| 10108-CAB | LTE-FDD (SC-FDMA, 100% RB, 10 MHz, QPSK) | X | 6.64 | 68.7 | 20.9 | 5.80 | 122.8 | $\pm 2.7 \%$ |
| | | Y | 6.72 | 68.2 | 20.3 | | 132.6 | |
| | | Z | 6.55 | 67.7 | 19.9 | | 145.1 | |
| 10110-CAB | LTE-FDD (SC-FDMA, 100% RB, 5 MHz, QPSK) | X | 6.26 | 67.7 | 20.4 | 5.75 | 120.8 | $\pm 2.5 \%$ |
| | | Y | 6.39 | 67.5 | 19.9 | | 130.2 | |
| | | Z | 6.18 | 67.0 | 19.5 | | 141.3 | |
| 10151-CAB | LTE-TDD (SC-FDMA, 50% RB, 20 MHz, QPSK) | X | 12.65 | 81.1 | 29.1 | 9.28 | 120.7 | $\pm 4.6 \%$ |
| | | Y | 15.69 | 85.0 | 30.6 | | 149.8 | |
| | | Z | 10.47 | 77.3 | 27.3 | | 129.7 | |
| 10154-CAB | LTE-FDD (SC-FDMA, 50% RB, 10 MHz, QPSK) | X | 6.15 | 67.1 | 19.9 | 5.75 | 121.3 | $\pm 2.5 \%$ |
| | | Y | 6.39 | 67.4 | 19.9 | | 130.3 | |
| | | Z | 6.20 | 67.1 | 19.5 | | 141.0 | |
| 10160-CAB | LTE-FDD (SC-FDMA, 50% RB, 15 MHz, QPSK) | X | 6.61 | 67.8 | 20.2 | 5.82 | 125.8 | $\pm 2.7 \%$ |
| | | Y | 6.84 | 68.0 | 20.1 | | 134.4 | |
| | | Z | 6.64 | 67.6 | 19.8 | | 146.2 | |

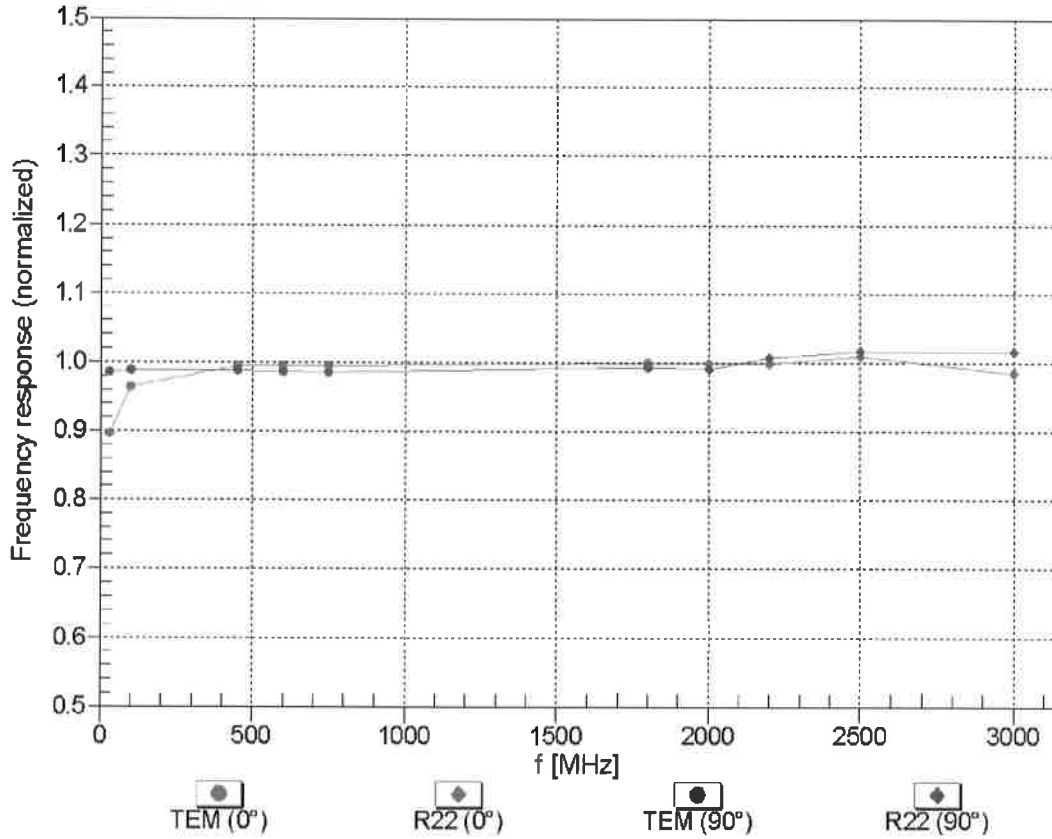
| | | | | | | | | |
|-----------|------------------------------------------|---|-------|------|------|------|-------|--------|
| 10169-CAB | LTE-FDD (SC-FDMA, 1 RB, 20 MHz, QPSK) | X | 5.11 | 66.3 | 19.6 | 5.73 | 108.9 | ±1.9 % |
| | | Y | 5.32 | 66.1 | 19.3 | | 116.8 | |
| | | Z | 5.12 | 66.2 | 19.0 | | 124.4 | |
| 10172-CAB | LTE-TDD (SC-FDMA, 1 RB, 20 MHz, QPSK) | X | 14.38 | 90.8 | 33.8 | 9.21 | 141.9 | ±3.0 % |
| | | Y | 12.86 | 84.1 | 30.3 | | 114.2 | |
| | | Z | 10.55 | 84.0 | 30.9 | | 148.3 | |
| 10175-CAB | LTE-FDD (SC-FDMA, 1 RB, 10 MHz, QPSK) | X | 5.13 | 66.4 | 19.7 | 5.72 | 108.7 | ±1.9 % |
| | | Y | 5.30 | 66.0 | 19.2 | | 116.1 | |
| | | Z | 5.10 | 66.1 | 19.0 | | 123.1 | |
| 10181-CAB | LTE-FDD (SC-FDMA, 1 RB, 15 MHz, QPSK) | X | 5.07 | 66.1 | 19.5 | 5.72 | 108.9 | ±2.2 % |
| | | Y | 5.31 | 66.1 | 19.3 | | 116.3 | |
| | | Z | 5.12 | 66.2 | 19.1 | | 123.3 | |
| 10237-CAB | LTE-TDD (SC-FDMA, 1 RB, 10 MHz, QPSK) | X | 14.42 | 90.9 | 33.9 | 9.21 | 142.9 | ±4.9 % |
| | | Y | 12.62 | 83.5 | 30.0 | | 114.0 | |
| | | Z | 10.40 | 83.4 | 30.5 | | 147.6 | |
| 10240-CAB | LTE-TDD (SC-FDMA, 1 RB, 15 MHz, QPSK) | X | 14.76 | 91.7 | 34.2 | 9.21 | 143.9 | ±5.2 % |
| | | Y | 12.65 | 83.5 | 30.0 | | 113.9 | |
| | | Z | 10.32 | 83.1 | 30.4 | | 147.0 | |
| 10252-CAB | LTE-TDD (SC-FDMA, 50% RB, 10 MHz, QPSK) | X | 11.86 | 80.3 | 28.9 | 9.24 | 116.4 | ±4.1 % |
| | | Y | 14.64 | 83.8 | 30.1 | | 140.5 | |
| | | Z | 9.39 | 75.2 | 26.3 | | 120.0 | |
| 10255-CAB | LTE-TDD (SC-FDMA, 50% RB, 15 MHz, QPSK) | X | 12.88 | 81.7 | 29.4 | 9.20 | 124.2 | ±4.9 % |
| | | Y | 12.19 | 77.5 | 26.8 | | 95.3 | |
| | | Z | 10.02 | 76.0 | 26.5 | | 127.7 | |
| 10267-CAB | LTE-TDD (SC-FDMA, 100% RB, 10 MHz, QPSK) | X | 12.95 | 81.8 | 29.5 | 9.30 | 123.3 | ±4.6 % |
| | | Y | 15.70 | 84.9 | 30.5 | | 149.6 | |
| | | Z | 10.24 | 76.5 | 26.9 | | 127.2 | |
| 10270-CAB | LTE-TDD (SC-FDMA, 100% RB, 15 MHz, QPSK) | X | 12.71 | 79.2 | 28.0 | 9.58 | 132.1 | ±3.0 % |
| | | Y | 11.44 | 73.7 | 24.6 | | 100.0 | |
| | | Z | 10.60 | 75.4 | 26.1 | | 135.6 | |
| 10297-AAA | LTE-FDD (SC-FDMA, 50% RB, 20 MHz, QPSK) | X | 6.51 | 67.9 | 20.3 | 5.81 | 126.0 | ±2.7 % |
| | | Y | 6.74 | 68.2 | 20.3 | | 132.1 | |
| | | Z | 6.47 | 67.4 | 19.6 | | 142.3 | |
| 10311-AAA | LTE-FDD (SC-FDMA, 100% RB, 15 MHz, QPSK) | X | 7.11 | 68.7 | 20.8 | 6.06 | 130.6 | ±3.3 % |
| | | Y | 7.36 | 69.0 | 20.8 | | 137.0 | |
| | | Z | 7.12 | 68.3 | 20.2 | | 146.8 | |

The reported uncertainty of measurement is stated as the standard uncertainty of measurement multiplied by the coverage factor $k=2$, which for a normal distribution corresponds to a coverage probability of approximately 95%.

^B Numerical linearization parameter: uncertainty not required.

^E Uncertainty is determined using the max. deviation from linear response applying rectangular distribution and is expressed for the square of the field value.

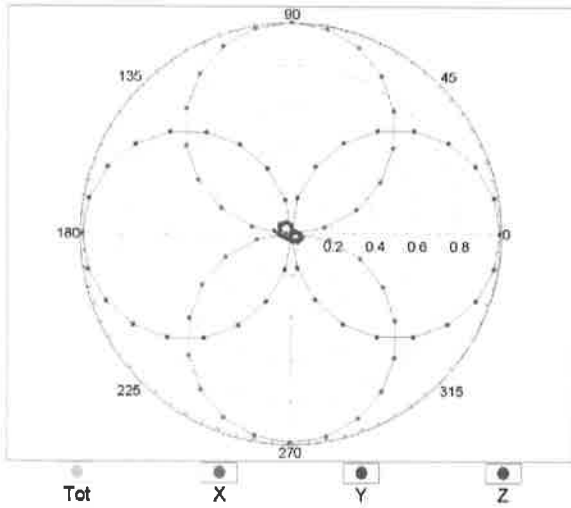
Frequency Response of E-Field (TEM-Cell:ifi110 EXX, Waveguide: R22)



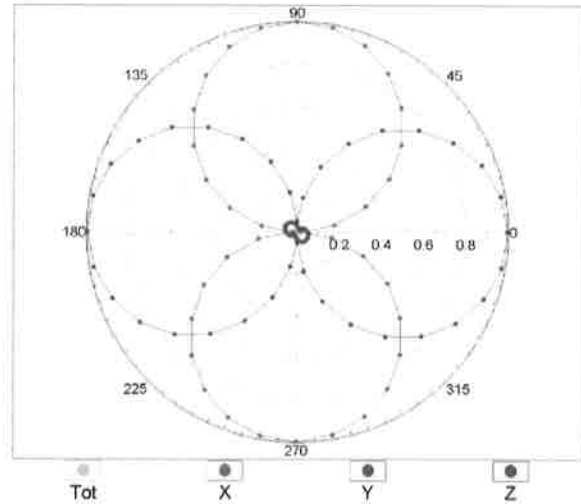
Uncertainty of Frequency Response of E-field: $\pm 6.3\%$ (k=2)

Receiving Pattern (ϕ), $\vartheta = 0^\circ$

f=600 MHz, TEM, 0°

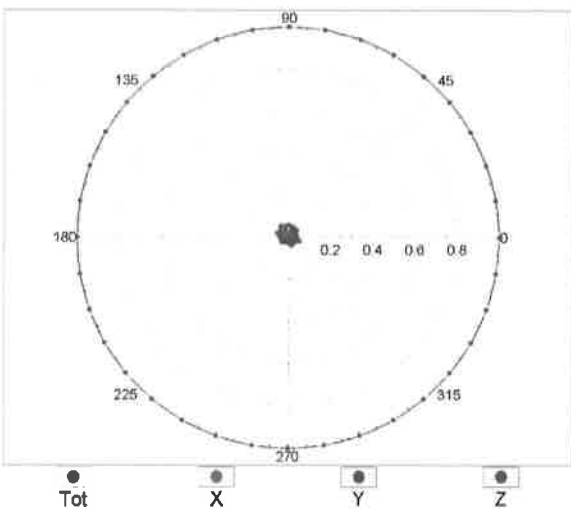


f=2500 MHz, R22, 0°

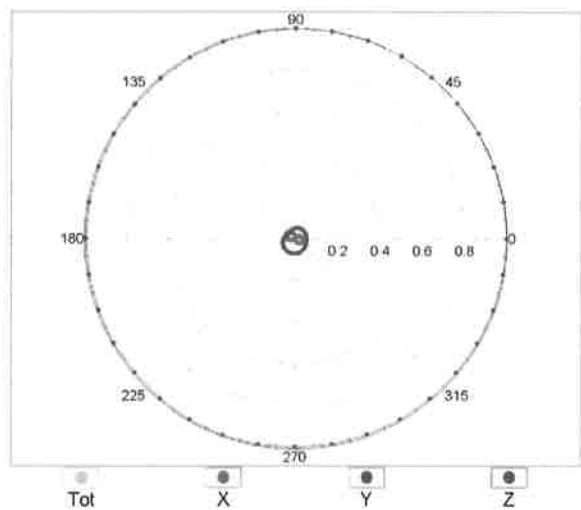


Receiving Pattern (ϕ), $\vartheta = 90^\circ$

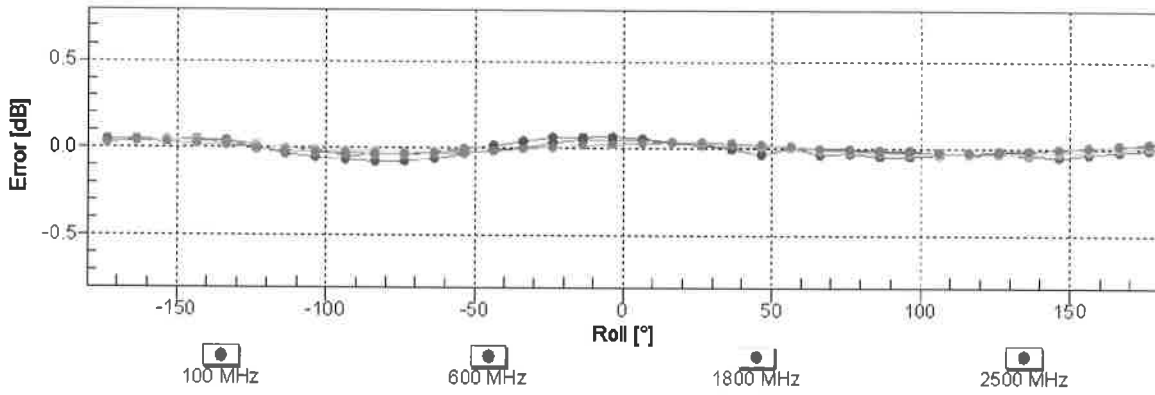
f=600 MHz, TEM, 90°



f=2500 MHz, R22, 90°

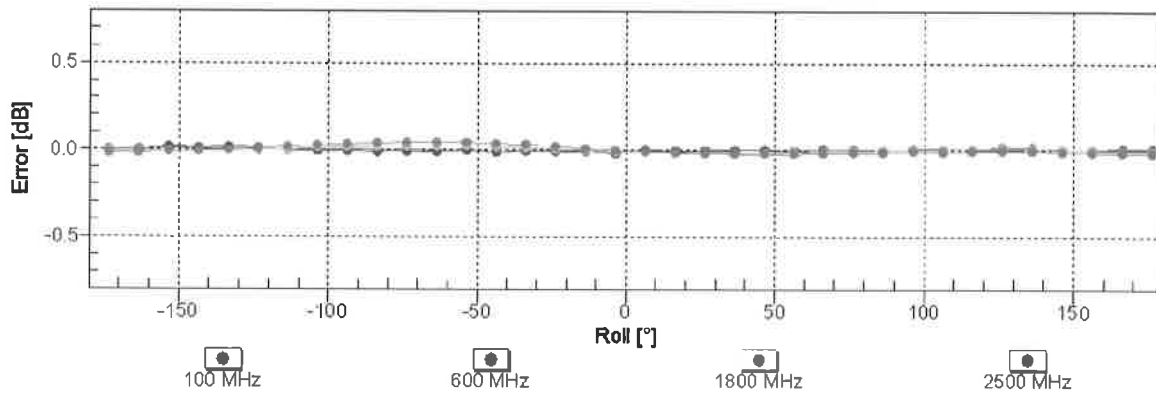


Receiving Pattern (ϕ), $\vartheta = 0^\circ$



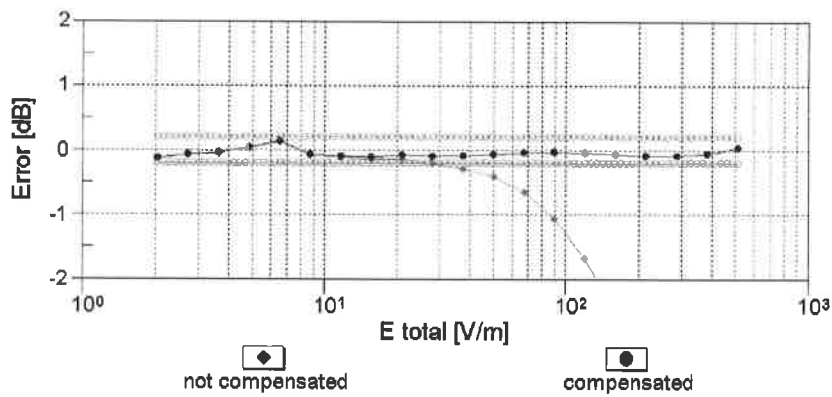
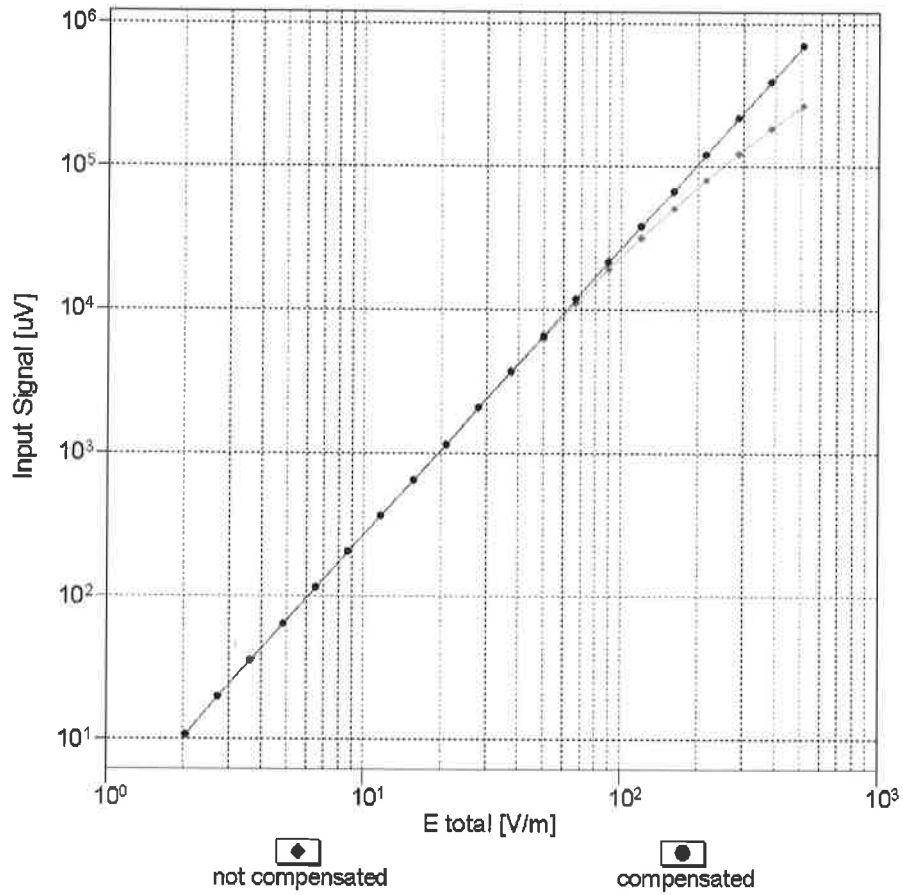
Uncertainty of Axial Isotropy Assessment: $\pm 0.5\%$ ($k=2$)

Receiving Pattern (ϕ), $\vartheta = 90^\circ$



Uncertainty of Axial Isotropy Assessment: $\pm 0.5\%$ ($k=2$)

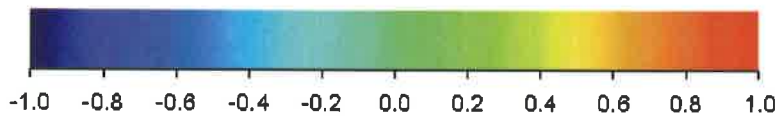
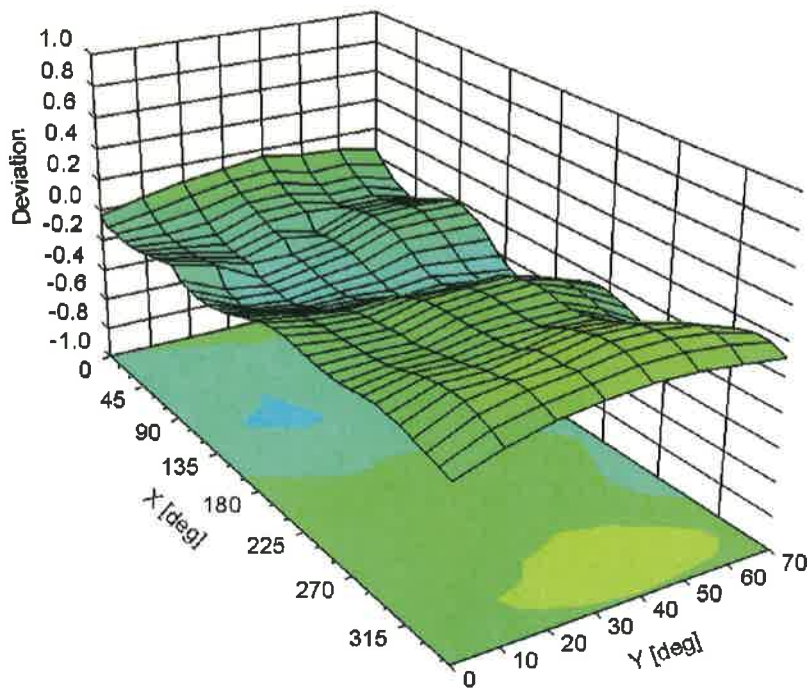
Dynamic Range f(E-field) (TEM cell , f = 900 MHz)



Uncertainty of Linearity Assessment: ± 0.6% (k=2)

Deviation from Isotropy in Air

Error (ϕ, θ), $f = 900$ MHz



Uncertainty of Spherical Isotropy Assessment: $\pm 2.6\%$ ($k=2$)

DASY/EASY - Parameters of Probe: ER3DV6 - SN:2509

Other Probe Parameters

| | |
|-----------------------------------------|-------------|
| Sensor Arrangement | Rectangular |
| Connector Angle (°) | -113.6 |
| Mechanical Surface Detection Mode | enabled |
| Optical Surface Detection Mode | disabled |
| Probe Overall Length | 337 mm |
| Probe Body Diameter | 10 mm |
| Tip Length | 10 mm |
| Tip Diameter | 8 mm |
| Probe Tip to Sensor X Calibration Point | 2.5 mm |
| Probe Tip to Sensor Y Calibration Point | 2.5 mm |
| Probe Tip to Sensor Z Calibration Point | 2.5 mm |



Accredited by the Swiss Accreditation Service (SAS)
The Swiss Accreditation Service is one of the signatories to the EA
Multilateral Agreement for the recognition of calibration certificates

Accreditation No.: **SCS 108**

Client **UL CCS USA**

Certificate No: **CD835V3-1175_May13**

CALIBRATION CERTIFICATE

Object **CD835V3 - SN: 1175**

Calibration procedure(s) **QA CAL-20.v6
Calibration procedure for dipoles in air**

Calibration date: **May 21, 2013**

This calibration certificate documents the traceability to national standards, which realize the physical units of measurements (SI).
The measurements and the uncertainties with confidence probability are given on the following pages and are part of the certificate.

All calibrations have been conducted in the closed laboratory facility: environment temperature (22 ± 3)°C and humidity < 70%.

Calibration Equipment used (M&TE critical for calibration)

| Primary Standards | ID # | Cal Date (Certificate No.) | Scheduled Calibration |
|----------------------------|------------------|--------------------------------|-----------------------|
| Power meter EPM-442A | GB37480704 | 01-Nov-12 (No. 217-01640) | Oct-13 |
| Power sensor HP 8481A | US37292783 | 01-Nov-12 (No. 217-01640) | Oct-13 |
| Reference 10 dB Attenuator | SN: 5047.2 (10q) | 04-Apr-13 (No. 217-01731) | Apr-14 |
| Probe ER3DV6 | SN: 2336 | 28-Dec-12 (No. ER3-2336_Dec12) | Dec-13 |
| Probe H3DV6 | SN: 6065 | 28-Dec-12 (No. H3-6065_Dec12) | Dec-13 |
| DAE4 | SN: 781 | 29-May-12 (No. DAE4-781_May12) | May-13 |

| Secondary Standards | ID # | Check Date (in house) | Scheduled Check |
|---------------------------|----------------|-----------------------------------|------------------------|
| Power meter Agilent 4419B | SN: GB42420191 | 09-Oct-09 (in house check Oct-12) | In house check: Oct-13 |
| Power sensor HP E4412A | SN: MY41495277 | 01-Apr-08 (in house check Oct-12) | In house check: Oct-13 |
| Power sensor HP 8482A | SN: US37295597 | 09-Oct-09 (in house check Oct-12) | In house check: Oct-13 |
| Network Analyzer HP 8753E | US37390585 | 18-Oct-01 (in house check Oct-12) | In house check: Oct-13 |
| RF generator R&S SMT-06 | SN: 832283/011 | 27-Aug-12 (in house check Oct-12) | In house check: Oct-14 |

Calibrated by: **Claudio Leubler** Name: Claudio Leubler Function: Laboratory Technician

Signature

Approved by: **Fin Bomholt** Name: Fin Bomholt Function: Deputy Technical Manager

Issued: May 21, 2013

This calibration certificate shall not be reproduced except in full without written approval of the laboratory.



Accredited by the Swiss Accreditation Service (SAS)

The Swiss Accreditation Service is one of the signatories to the EA
Multilateral Agreement for the recognition of calibration certificates

Accreditation No.: **SCS 108**

References

- [1] ANSI-C63.19-2007
American National Standard for Methods of Measurement of Compatibility between Wireless Communications Devices and Hearing Aids.
- [2] ANSI-C63.19-2011
American National Standard, Methods of Measurement of Compatibility between Wireless Communications Devices and Hearing Aids.

Methods Applied and Interpretation of Parameters:

- **Coordinate System:** y-axis is in the direction of the dipole arms. z-axis is from the basis of the antenna (mounted on the table) towards its feed point between the two dipole arms. x-axis is normal to the other axes. In coincidence with the standards [1], the measurement planes (probe sensor center) are selected to be at a distance of 10 mm (15 mm for [2]) above the top metal edge of the dipole arms.
- **Measurement Conditions:** Further details are available from the hardcopies at the end of the certificate. All figures stated in the certificate are valid at the frequency indicated. The forward power to the dipole connector is set with a calibrated power meter connected and monitored with an auxiliary power meter connected to a directional coupler. While the dipole under test is connected, the forward power is adjusted to the same level.
- **Antenna Positioning:** The dipole is mounted on a HAC Test Arch phantom using the matching dipole positioner with the arms horizontal and the feeding cable coming from the floor. The measurements are performed in a shielded room with absorbers around the setup to reduce the reflections. It is verified before the mounting of the dipole under the Test Arch phantom, that its arms are perfectly in a line. It is installed on the HAC dipole positioner with its arms parallel below the dielectric reference wire and able to move elastically in vertical direction without changing its relative position to the top center of the Test Arch phantom. The vertical distance to the probe is adjusted after dipole mounting with a DASY5 Surface Check job. Before the measurement, the distance between phantom surface and probe tip is verified. The proper measurement distance is selected by choosing the matching section of the HAC Test Arch phantom with the proper device reference point (upper surface of the dipole) and the matching grid reference point (tip of the probe) considering the probe sensor offset. The vertical distance to the probe is essential for the accuracy.
- **Feed Point Impedance and Return Loss:** These parameters are measured using a HP 8753E Vector Network Analyzer. The impedance is specified at the SMA connector of the dipole. The influence of reflections was eliminated by applying the averaging function while moving the dipole in the air, at least 70cm away from any obstacles.
- **E-field distribution:** E field is measured in the x-y-plane with an isotropic ER3D-field probe with 100 mW forward power to the antenna feed point. In accordance with [1] and [2], the scan area is 20mm wide, its length exceeds the dipole arm length (180 or 90mm). The sensor center is 10 mm (15 mm for [2]) (in z) above the metal top of the dipole arms. Two 3D maxima are available near the end of the dipole arms. Assuming the dipole arms are perfectly in one line, the average of these two maxima (in subgrid 2 and subgrid 8) is determined to compensate for any non-parallelity to the measurement plane as well as the sensor displacement. The E-field value stated as calibration value represents the maximum of the interpolated 3D-E-field, in the plane above the dipole surface.
- **H-field distribution:** H-field is measured with an isotropic H-field probe with 100mW forward power to the antenna feed point, in the x-y-plane. The scan area and sensor distance is equivalent to the E-field scan. The maximum of the field is available at the center (subgrid 5) above the feed point. The H-field value stated as calibration value represents the maximum of the interpolated H-field, 10mm above the dipole surface at the feed point.

The reported uncertainty of measurement is stated as the standard uncertainty of measurement multiplied by the coverage factor $k=2$, which for a normal distribution corresponds to a coverage probability of approximately 95%.

Measurement Conditions

DASY system configuration, as far as not given on page 1.

| | | |
|-------------------------------------------|------------------------|---------|
| DASY Version | DASY5 | V52.8.6 |
| Extrapolation | Advanced Extrapolation | |
| Phantom | HAC Test Arch | |
| Distance Dipole Top - Probe Center | 15mm | |
| Scan resolution | dx, dy = 5 mm | |
| Frequency | 835 MHz \pm 1 MHz | |
| Input power drift | < 0.05 dB | |

Maximum Field values at 835 MHz

| E-field 15 mm above dipole surface | condition | Interpolated maximum |
|-------------------------------------------|--------------------|--------------------------------------------------|
| Maximum measured above high end | 100 mW input power | 109.6 V / m |
| Maximum measured above low end | 100 mW input power | 109.1 V / m |
| Averaged maximum above arm | 100 mW input power | 109.4 V / m \pm 12.8 % (k=2) |

Appendix

Antenna Parameters

| Frequency | Return Loss | Impedance |
|------------------|--------------------|---------------------------------|
| 800 MHz | 16.4 dB | 41.4 Ω - 11.0 j Ω |
| 835 MHz | 26.1 dB | 48.9 Ω + 4.8 j Ω |
| 900 MHz | 16.5 dB | 56.5 Ω - 14.7 j Ω |
| 950 MHz | 19.3 dB | 48.0 Ω + 10.6 j Ω |
| 960 MHz | 14.5 dB | 58.1 Ω + 19.1 j Ω |

3.2 Antenna Design and Handling

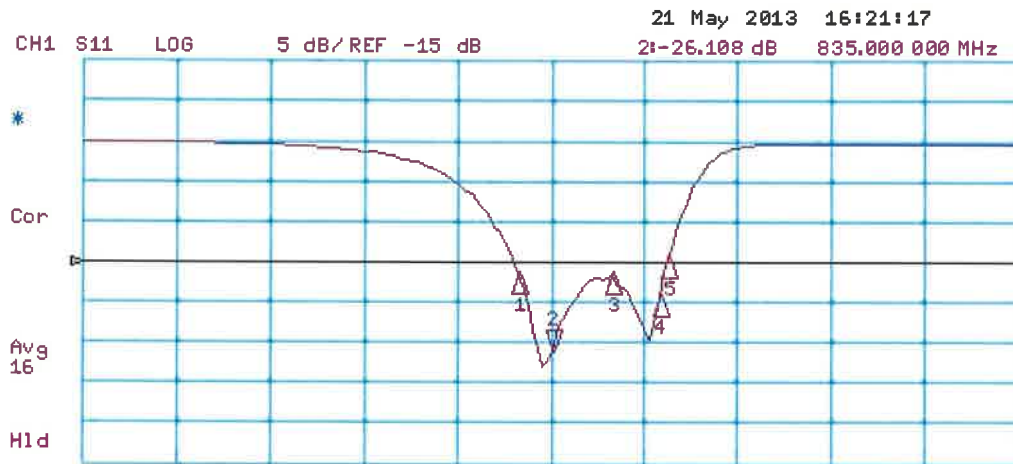
The calibration dipole has a symmetric geometry with a built-in two stub matching network, which leads to the enhanced bandwidth.

The dipole is built of standard semirigid coaxial cable. The internal matching line is open ended. The antenna is therefore open for DC signals.

Do not apply force to dipole arms, as they are liable to bend. The soldered connections near the feedpoint may be damaged. After excessive mechanical stress or overheating, check the impedance characteristics to ensure that the internal matching network is not affected.

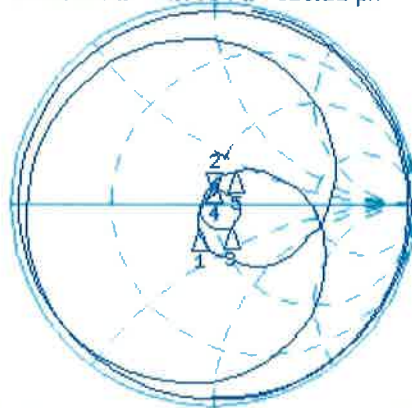
After long term use with 40W radiated power, only a slight warming of the dipole near the feedpoint can be measured.

Impedance Measurement Plot



CH2 S11 1 U FS 2: 48.904 Ω 4.7754 Ω 910.21 μH 835.000 000 MHz

De1
Cor
Avg 16
H1d



START 335.000 000 MHz

STOP 1 335.000 000 MHz

DASY5 E-field Result

Date: 21.05.2013

Test Laboratory: SPEAG Lab2

DUT: HAC-Dipole 835 MHz; Type: CD835V3; Serial: CD835V3 - SN: 1175

Communication System: UID 0 - CW; Frequency: 835 MHz
Medium parameters used: $\sigma = 0$ S/m, $\epsilon_r = 1$; $\rho = 1000$ kg/m³
Phantom section: RF Section
Measurement Standard: DASY5 (IEEE/IEC/ANSI C63.19-2011)

DASY52 Configuration:

- Probe: ER3DV6 - SN2336; ConvF(1, 1, 1); Calibrated: 28.12.2012;
- Sensor-Surface: (Fix Surface)
- Electronics: DAE4 Sn781; Calibrated: 29.05.2012
- Phantom: HAC Test Arch with AMCC; Type: SD HAC P01 BA; Serial: 1070
- DASY52 52.8.6(1115); SEMCAD X 14.6.9(7117)

Dipole E-Field measurement @ 835MHz/E-Scan - 835MHz d=15mm/Hearing Aid Compatibility Test (41x361x1):

Interpolated grid: dx=0.5000 mm, dy=0.5000 mm

Device Reference Point: 0, 0, -6.3 mm

Reference Value = 110.1 V/m; Power Drift = -0.01 dB

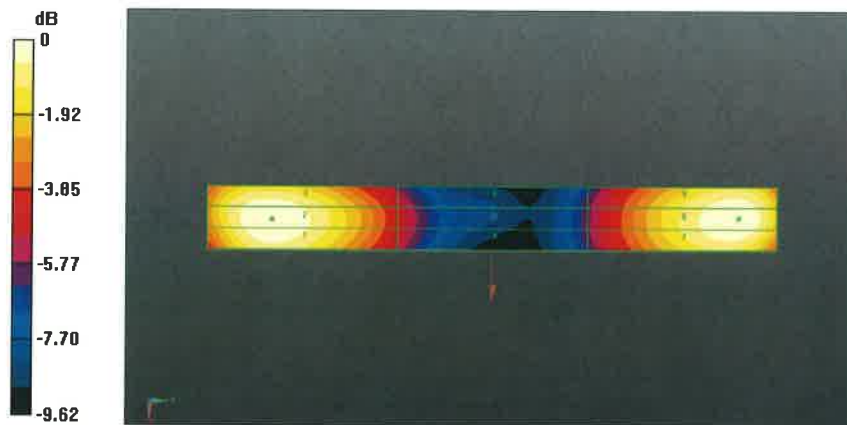
PMR not calibrated. PMF = 1.000 is applied.

E-field emissions = 109.6 V/m

Near-field category: M4 (AWF 0 dB)

PMF scaled E-field

| | | |
|------------------------|------------------------|------------------------|
| Grid 1 M4 108.2 V/m | Grid 2 M4 109.6 V/m | Grid 3 M4 106.7 V/m |
| Grid 4 M4 64.61 V/m | Grid 5 M4 65.24 V/m | Grid 6 M4 63.69 V/m |
| Grid 7 M4 107.0 V/m | Grid 8 M4 109.1 V/m | Grid 9 M4 107.2 V/m |



0 dB = 109.6 V/m = 40.80 dBV/m



Accredited by the Swiss Accreditation Service (SAS)
The Swiss Accreditation Service is one of the signatories to the EA
Multilateral Agreement for the recognition of calibration certificates

Accreditation No.: **SCS 108**

Client **UL CCS USA**

Certificate No: **CD1880V3-1159_May13**

CALIBRATION CERTIFICATE

Object **CD1880V3 - SN: 1159**

Calibration procedure(s) **QA CAL-20.v6
Calibration procedure for dipoles in air**

Calibration date: **May 21, 2013**

This calibration certificate documents the traceability to national standards, which realize the physical units of measurements (SI).
The measurements and the uncertainties with confidence probability are given on the following pages and are part of the certificate.

All calibrations have been conducted in the closed laboratory facility: environment temperature (22 ± 3)°C and humidity < 70%.

Calibration Equipment used (M&TE critical for calibration)

| Primary Standards | ID # | Cal Date (Certificate No.) | Scheduled Calibration |
|----------------------------|------------------|--------------------------------|-----------------------|
| Power meter EPM-442A | GB37480704 | 01-Nov-12 (No. 217-01640) | Oct-13 |
| Power sensor HP 8481A | US37292783 | 01-Nov-12 (No. 217-01640) | Oct-13 |
| Reference 10 dB Attenuator | SN: 5047.2 (10q) | 04-Apr-13 (No. 217-01731) | Apr-14 |
| Probe ER3DV6 | SN: 2336 | 28-Dec-12 (No. ER3-2336_Dec12) | Dec-13 |
| Probe H3DV6 | SN: 6065 | 28-Dec-12 (No. H3-6065_Dec12) | Dec-13 |
| DAE4 | SN: 781 | 29-May-12 (No. DAE4-781_May12) | May-13 |

| Secondary Standards | ID # | Check Date (in house) | Scheduled Check |
|---------------------------|----------------|-----------------------------------|------------------------|
| Power meter Agilent 4419B | SN: GB42420191 | 09-Oct-09 (in house check Oct-12) | In house check: Oct-13 |
| Power sensor HP E4412A | SN: MY41495277 | 01-Apr-08 (in house check Oct-12) | In house check: Oct-13 |
| Power sensor HP 8482A | SN: US37295597 | 09-Oct-09 (in house check Oct-12) | In house check: Oct-13 |
| Network Analyzer HP 8753E | US37390585 | 18-Oct-01 (in house check Oct-12) | In house check: Oct-13 |
| RF generator R&S SMT-06 | SN: 832283/011 | 27-Aug-12 (in house check Oct-12) | In house check: Oct-14 |

Calibrated by: **Claudio Leubler** Function: **Laboratory Technician** Signature:

Approved by: **Fin Bomholt** Deputy Technical Manager

Issued: May 21, 2013

This calibration certificate shall not be reproduced except in full without written approval of the laboratory.



Accredited by the Swiss Accreditation Service (SAS)

The Swiss Accreditation Service is one of the signatories to the EA
Multilateral Agreement for the recognition of calibration certificates

Accreditation No.: **SCS 108**

References

- [1] ANSI-C63.19-2007
American National Standard for Methods of Measurement of Compatibility between Wireless Communications Devices and Hearing Aids.
- [2] ANSI-C63.19-2011
American National Standard, Methods of Measurement of Compatibility between Wireless Communications Devices and Hearing Aids.

Methods Applied and Interpretation of Parameters:

- **Coordinate System:** y-axis is in the direction of the dipole arms. z-axis is from the basis of the antenna (mounted on the table) towards its feed point between the two dipole arms. x-axis is normal to the other axes. In coincidence with the standards [1], the measurement planes (probe sensor center) are selected to be at a distance of 10 mm (15 mm for [2]) above the top metal edge of the dipole arms.
- **Measurement Conditions:** Further details are available from the hardcopies at the end of the certificate. All figures stated in the certificate are valid at the frequency indicated. The forward power to the dipole connector is set with a calibrated power meter connected and monitored with an auxiliary power meter connected to a directional coupler. While the dipole under test is connected, the forward power is adjusted to the same level.
- **Antenna Positioning:** The dipole is mounted on a HAC Test Arch phantom using the matching dipole positioner with the arms horizontal and the feeding cable coming from the floor. The measurements are performed in a shielded room with absorbers around the setup to reduce the reflections. It is verified before the mounting of the dipole under the Test Arch phantom, that its arms are perfectly in a line. It is installed on the HAC dipole positioner with its arms parallel below the dielectric reference wire and able to move elastically in vertical direction without changing its relative position to the top center of the Test Arch phantom. The vertical distance to the probe is adjusted after dipole mounting with a DASY5 Surface Check job. Before the measurement, the distance between phantom surface and probe tip is verified. The proper measurement distance is selected by choosing the matching section of the HAC Test Arch phantom with the proper device reference point (upper surface of the dipole) and the matching grid reference point (tip of the probe) considering the probe sensor offset. The vertical distance to the probe is essential for the accuracy.
- **Feed Point Impedance and Return Loss:** These parameters are measured using a HP 8753E Vector Network Analyzer. The impedance is specified at the SMA connector of the dipole. The influence of reflections was eliminated by applying the averaging function while moving the dipole in the air, at least 70cm away from any obstacles.
- **E-field distribution:** E field is measured in the x-y-plane with an isotropic ER3D-field probe with 100 mW forward power to the antenna feed point. In accordance with [1] and [2], the scan area is 20mm wide, its length exceeds the dipole arm length (180 or 90mm). The sensor center is 10 mm (15 mm for [2]) (in z) above the metal top of the dipole arms. Two 3D maxima are available near the end of the dipole arms. Assuming the dipole arms are perfectly in one line, the average of these two maxima (in subgrid 2 and subgrid 8) is determined to compensate for any non-parallelity to the measurement plane as well as the sensor displacement. The E-field value stated as calibration value represents the maximum of the interpolated 3D-E-field, in the plane above the dipole surface.
- **H-field distribution:** H-field is measured with an isotropic H-field probe with 100mW forward power to the antenna feed point, in the x-y-plane. The scan area and sensor distance is equivalent to the E-field scan. The maximum of the field is available at the center (subgrid 5) above the feed point. The H-field value stated as calibration value represents the maximum of the interpolated H-field, 10mm above the dipole surface at the feed point.

The reported uncertainty of measurement is stated as the standard uncertainty of measurement multiplied by the coverage factor $k=2$, which for a normal distribution corresponds to a coverage probability of approximately 95%.

Measurement Conditions

DASY system configuration, as far as not given on page 1.

| | | |
|-------------------------------------------|----------------------------------------------|---------|
| DASY Version | DASY5 | V52.8.6 |
| Extrapolation | Advanced Extrapolation | |
| Phantom | HAC Test Arch | |
| Distance Dipole Top - Probe Center | 15mm | |
| Scan resolution | dx, dy = 5 mm | |
| Frequency | 1730 MHz \pm 1 MHz 1880 MHz \pm 1 MHz | |
| Input power drift | < 0.05 dB | |

Maximum Field values at 1730 MHz

| E-field 15 mm above dipole surface | condition | Interpolated maximum |
|-------------------------------------------|--------------------|-------------------------------------------------|
| Maximum measured above high end | 100 mW input power | 97.8 V / m |
| Maximum measured above low end | 100 mW input power | 97.3 V / m |
| Averaged maximum above arm | 100 mW input power | 97.6 V / m \pm 12.8 % (k=2) |

Maximum Field values at 1880 MHz

| E-field 15 mm above dipole surface | condition | Interpolated maximum |
|-------------------------------------------|--------------------|-------------------------------------------------|
| Maximum measured above high end | 100 mW input power | 92.1 V / m |
| Maximum measured above low end | 100 mW input power | 88.2 V / m |
| Averaged maximum above arm | 100 mW input power | 90.2 V / m \pm 12.8 % (k=2) |

Appendix

Antenna Parameters

Nominal Frequencies

| Frequency | Return Loss | Impedance |
|-----------|-------------|---------------------------------|
| 1730 MHz | 32.8 dB | 49.2 Ω + 2.1 j Ω |
| 1880 MHz | 18.7 dB | 45.9 Ω + 10.3 j Ω |
| 1900 MHz | 18.8 dB | 48.5 Ω + 11.3 j Ω |
| 1950 MHz | 23.4 dB | 54.1 Ω + 5.8 j Ω |
| 2000 MHz | 23.9 dB | 45.1 Ω + 3.6 j Ω |

3.2 Antenna Design and Handling

The calibration dipole has a symmetric geometry with a built-in two stub matching network, which leads to the enhanced bandwidth.

The dipole is built of standard semirigid coaxial cable. The internal matching line is open ended. The antenna is therefore open for DC signals.

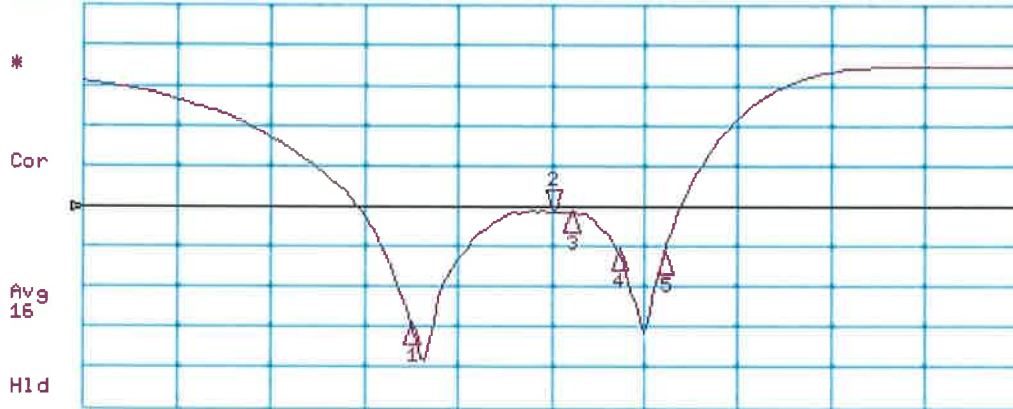
Do not apply force to dipole arms, as they are liable to bend. The soldered connections near the feedpoint may be damaged. After excessive mechanical stress or overheating, check the impedance characteristics to ensure that the internal matching network is not affected.

After long term use with 40W radiated power, only a slight warming of the dipole near the feedpoint can be measured.

Impedance Measurement Plot

21 May 2013 16:24:28

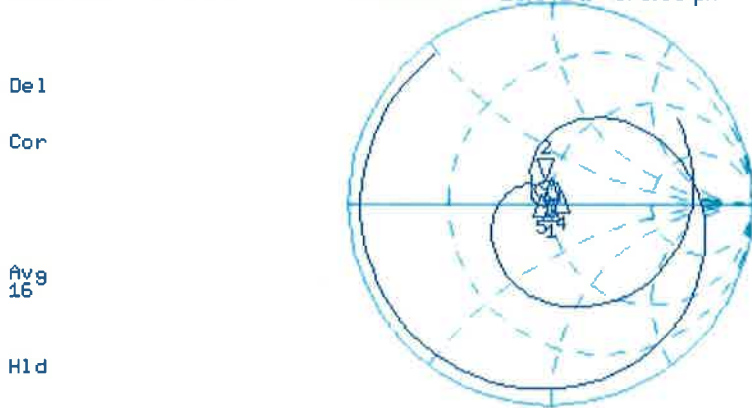
CH1 S11 LOG 5 dB/REF -18 dB 2:-18.748 dB 1 880.000 000 MHz



CH1 Markers

- 1:-32.774 dB
1.73000 GHz
- 3:-18.817 dB
1.90000 GHz
- 4:-23.357 dB
1.95000 GHz
- 5:-23.868 dB
2.00000 GHz

CH2 S11 1 U FS 2: 45.871 Ω 10.342 Ω 875.50 pF 1 880.000 000 MHz



CH2 Markers

- 1: 49.186 Ω
2.1270 Ω
1.73000 GHz
- 3: 48.525 Ω
11.264 Ω
1.90000 GHz
- 4: 54.127 Ω
5.7559 Ω
1.95000 GHz
- 5: 45.053 Ω
3.5586 Ω
2.00000 GHz

CENTER 1 880.000 000 MHz

SPAN 1 000.000 000 MHz

DASY5 E-field Result

Date: 21.05.2013

Test Laboratory: SPEAG Lab2

DUT: HAC Dipole 1880 MHz; Type: CD1880V3; Serial: CD1880V3 - SN: 1159

Communication System: UID 10000 - CW; Frequency: 1880 MHz, Frequency: 1730 MHz

Medium parameters used: $\sigma = 0$ S/m, $\epsilon_r = 1$; $\rho = 1000$ kg/m³

Phantom section: RF Section

Measurement Standard: DASY5 (IEEE/IEC/ANSI C63.19-2011)

DASY52 Configuration:

- Probe: ER3DV6 - SN2336; ConvF(1, 1, 1); Calibrated: 28.12.2012;
- Sensor-Surface: (Fix Surface)
- Electronics: DAE4 Sn781; Calibrated: 29.05.2012
- Phantom: HAC Test Arch with AMCC; Type: SD HAC P01 BA; Serial: 1070
- DASY52 52.8.6(1115); SEMCAD X 14.6.9(7117)

Dipole E-Field measurement @ 1880MHz/E-Scan - 1880MHz d=15mm/Hearing Aid Compatibility Test (41x181x1):

Interpolated grid: dx=0.5000 mm, dy=0.5000 mm

Device Reference Point: 0, 0, -6.3 mm

Reference Value = 157.4 V/m; Power Drift = 0.01 dB

PMR not calibrated. PMF = 1.000 is applied.

E-field emissions = 92.12 V/m

Near-field category: M3 (AWF 0 dB)

PMF scaled E-field

| | | |
|-------------------------------|-------------------------------|-------------------------------|
| Grid 1 M3 90.12 V/m | Grid 2 M3 92.12 V/m | Grid 3 M3 90.92 V/m |
| Grid 4 M3 70.79 V/m | Grid 5 M3 71.70 V/m | Grid 6 M3 70.61 V/m |
| Grid 7 M3 86.08 V/m | Grid 8 M3 88.18 V/m | Grid 9 M3 87.24 V/m |

Dipole E-Field measurement @ 1880MHz/E-Scan - 1730MHz d=15mm/Hearing Aid Compatibility Test (41x181x1):

Interpolated grid: dx=0.5000 mm, dy=0.5000 mm

Device Reference Point: 0, 0, -6.3 mm

Reference Value = 173.2 V/m; Power Drift = -0.01 dB

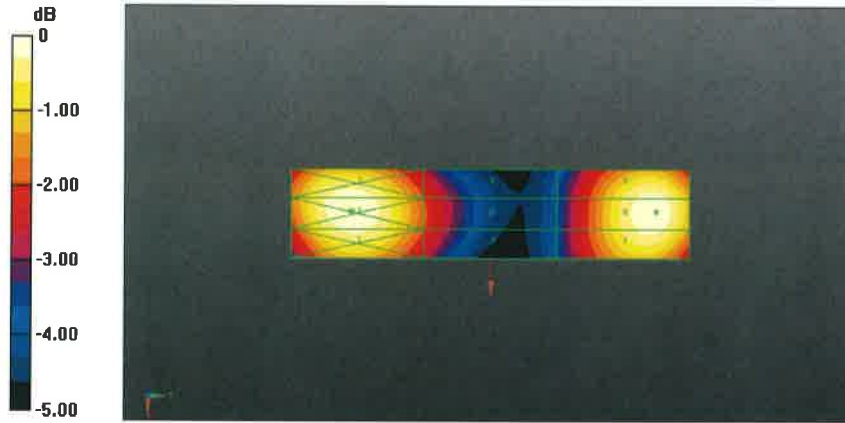
PMR not calibrated. PMF = 1.000 is applied.

E-field emissions = 97.30 V/m

Near-field category: M3 (AWF 0 dB)

PMF scaled E-field

| | | |
|------------------------|------------------------|------------------------|
| Grid 1 M3 95.34 V/m | Grid 2 M3 97.83 V/m | Grid 3 M3 96.67 V/m |
| Grid 4 M3 76.85 V/m | Grid 5 M3 78.01 V/m | Grid 6 M3 76.82 V/m |
| Grid 7 M3 95.37 V/m | Grid 8 M3 97.30 V/m | Grid 9 M3 95.88 V/m |



0 dB = 92.12 V/m = 39.29 dBV/m