

## Bluetooth

Frequency: 2441 MHz; Duty Cycle: 1:3.25; Room Ambient Temperature: 24.0°C; Liquid Temperature: 23.0°C  
 Medium parameters used (interpolated):  $f = 2441$  MHz;  $\sigma = 1.911$  mho/m;  $\epsilon_r = 51.785$ ;  $\rho = 1000$  kg/m<sup>3</sup>

DASY5 Configuration:

- Area Scan setting - Find Secondary Maximum Within: 2.0 dB and with a peak SAR value greater than 0.0012W/kg
- Electronics: DAE4 Sn1239; Calibrated: 6/6/2012
- Probe: EX3DV4 - SN3773; ConvF(6.67, 6.67, 6.67); Calibrated: 3/14/2012
- Sensor-Surface: 2.5mm (Mechanical Surface Detection (Locations From Previous Scan Used)), Sensor-Surface: 2.5mm (Mechanical Surface Detection)
- Phantom: ELI v5.0 (B); Type: QDOVA001BB; Serial: 1099

**Rear/802.15\_GFSK\_ch 39/Area Scan (8x13x1):** Measurement grid: dx=12mm, dy=12mm

[Info: Interpolated medium parameters used for SAR evaluation.](#)

Maximum value of SAR (measured) = 0.141 mW/g

**Rear/802.15\_GFSK\_ch 39/Zoom Scan (7x7x7)/Cube 0:** Measurement grid: dx=5mm, dy=5mm, dz=5mm

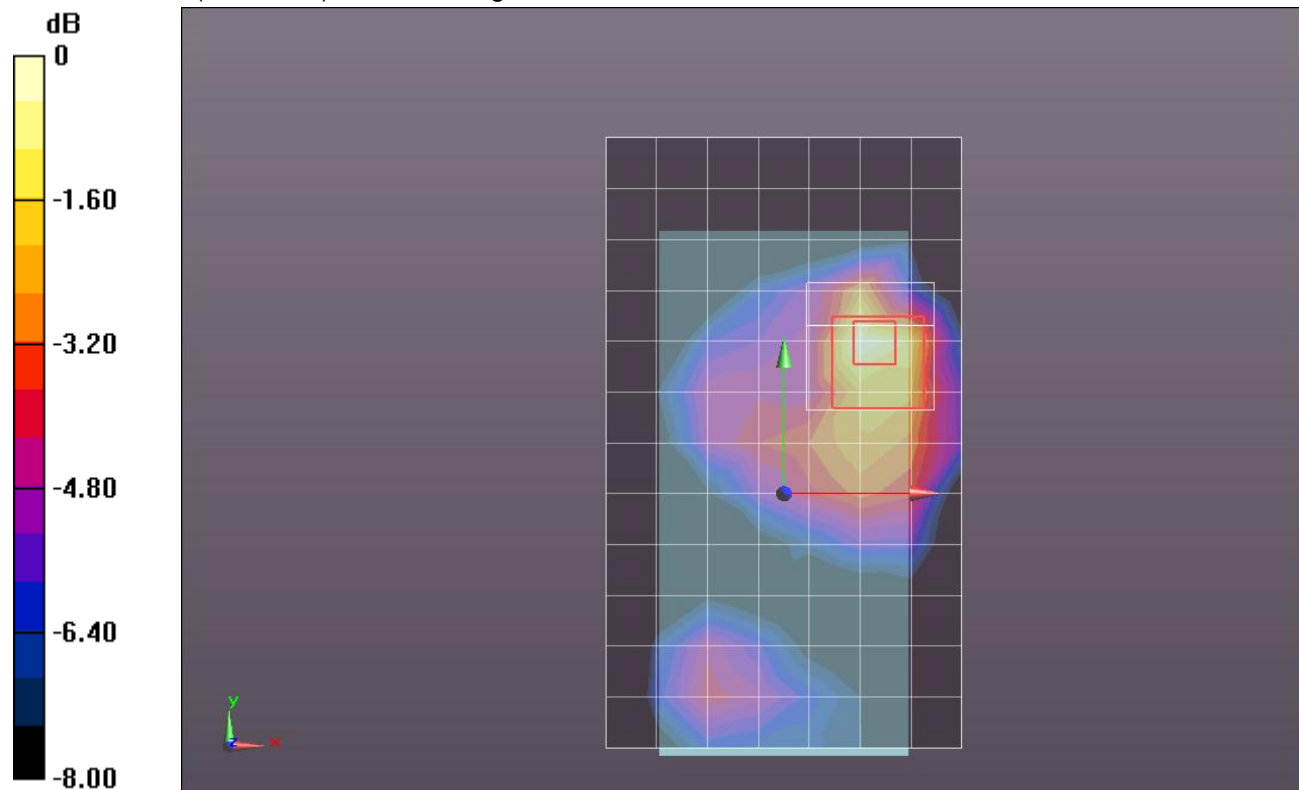
Reference Value = 8.729 V/m; Power Drift = -0.06 dB

Peak SAR (extrapolated) = 0.2370

**SAR(1 g) = 0.105 mW/g; SAR(10 g) = 0.052 mW/g**

[Info: Interpolated medium parameters used for SAR evaluation.](#)

Maximum value of SAR (measured) = 0.146 mW/g



0 dB = 0.140mW/g = -17.08 dB mW/g

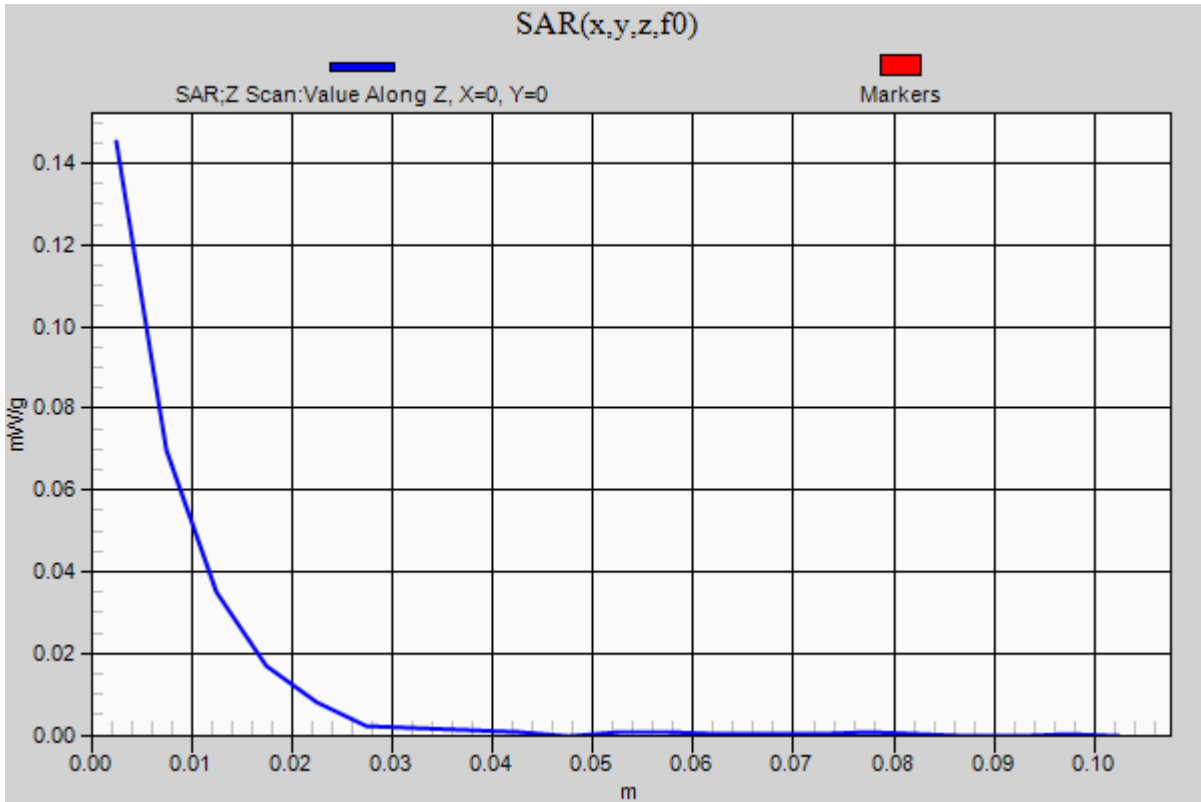
## Bluetooth

Frequency: 2441 MHz; Duty Cycle: 1:3.25

**Rear/802.15\_GFSK\_ch 39/Z Scan (1x1x21):** Measurement grid: dx=20mm, dy=20mm, dz=5mm

Info: [Interpolated medium parameters used for SAR evaluation.](#)

Maximum value of SAR (measured) = 0.145 mW/g



## Bluetooth

Frequency: 2441 MHz; Duty Cycle: 1:3.25; Room Ambient Temperature: 24.0°C; Liquid Temperature: 23.0°C  
 Medium parameters used (interpolated):  $f = 2441 \text{ MHz}$ ;  $\sigma = 1.911 \text{ mho/m}$ ;  $\epsilon_r = 51.785$ ;  $\rho = 1000 \text{ kg/m}^3$

DASY5 Configuration:

- Area Scan setting - Find Secondary Maximum Within: 2.0 dB and with a peak SAR value greater than 0.0012W/kg
- Electronics: DAE4 Sn1239; Calibrated: 6/6/2012
- Probe: EX3DV4 - SN3773; ConvF(6.67, 6.67, 6.67); Calibrated: 3/14/2012
- Sensor-Surface: 2.5mm (Mechanical Surface Detection (Locations From Previous Scan Used)), Sensor-Surface: 2.5mm (Mechanical Surface Detection)
- Phantom: ELI v5.0 (B); Type: QDOVA001BB; Serial: 1099

**Front/802.15\_GFSK\_ch 39/Area Scan (8x13x1):** Measurement grid: dx=12mm, dy=12mm

[Info: Interpolated medium parameters used for SAR evaluation.](#)

Maximum value of SAR (measured) = 0.064 mW/g

**Front/802.15\_GFSK\_ch 39/Zoom Scan (7x7x7)/Cube 0:** Measurement grid: dx=5mm, dy=5mm, dz=5mm

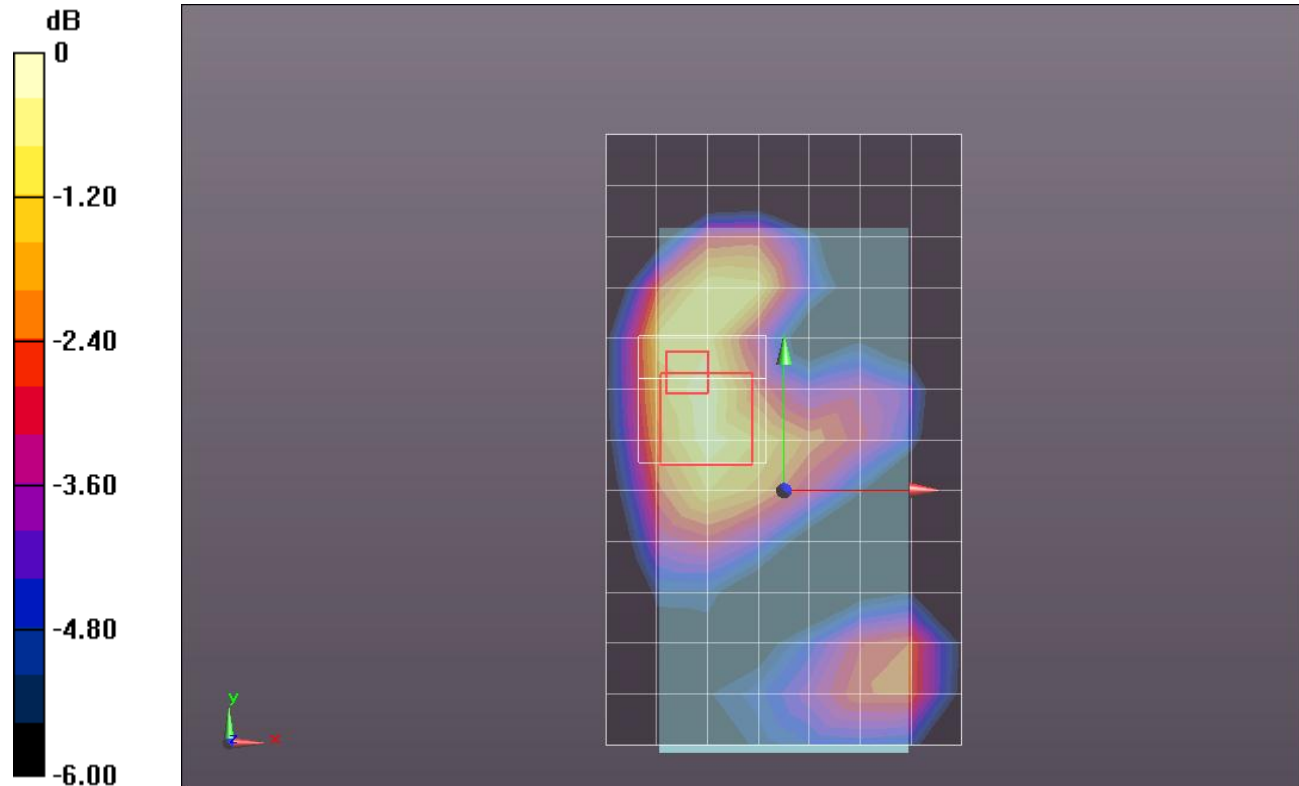
Reference Value = 5.749 V/m; Power Drift = 0.03 dB

Peak SAR (extrapolated) = 0.0950

**SAR(1 g) = 0.052 mW/g; SAR(10 g) = 0.030 mW/g**

[Info: Interpolated medium parameters used for SAR evaluation.](#)

Maximum value of SAR (measured) = 0.068 mW/g



0 dB = 0.070mW/g = -23.10 dB mW/g