



TAPTIC ENGINE

Rechargeable Li-ion Battery
3.86V, 1100mAh, Assembled
in China, Model# A1909, A1909
1000000-00000, A1909, 非原廠
配件，請勿使用。請認明
蘋果公司商標，以免受損。
請認明蘋果公司商標，以免受損。

GRADUATIONS
2MM

JOHNSON BROS.
BIG PRO CS18

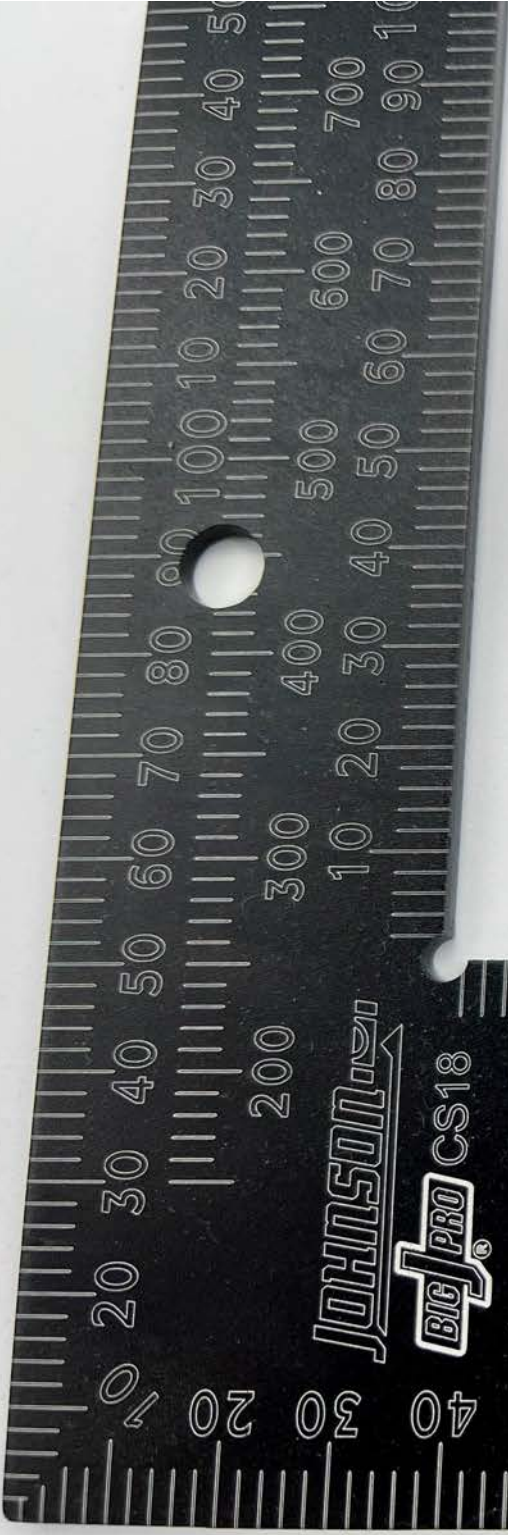
COMMON RAFTER LENGTH
CALCULATION

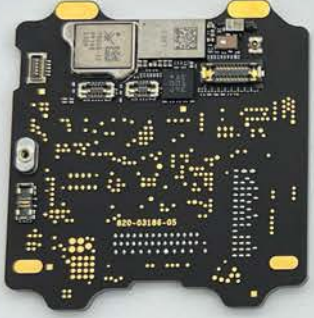
$$\text{COMMON RAFTER LENGTH} = \sqrt{\text{RISE}^2 + \text{RUN}^2}$$



COMMON
RAFTER
LENGTH
ON
R
ENCE

0 20 30 40 50 60 70 80 90 100 10 20 30 40 50 60 70 80 90 100
200 300 400 500 600 700





GRADUATIONS
2MM

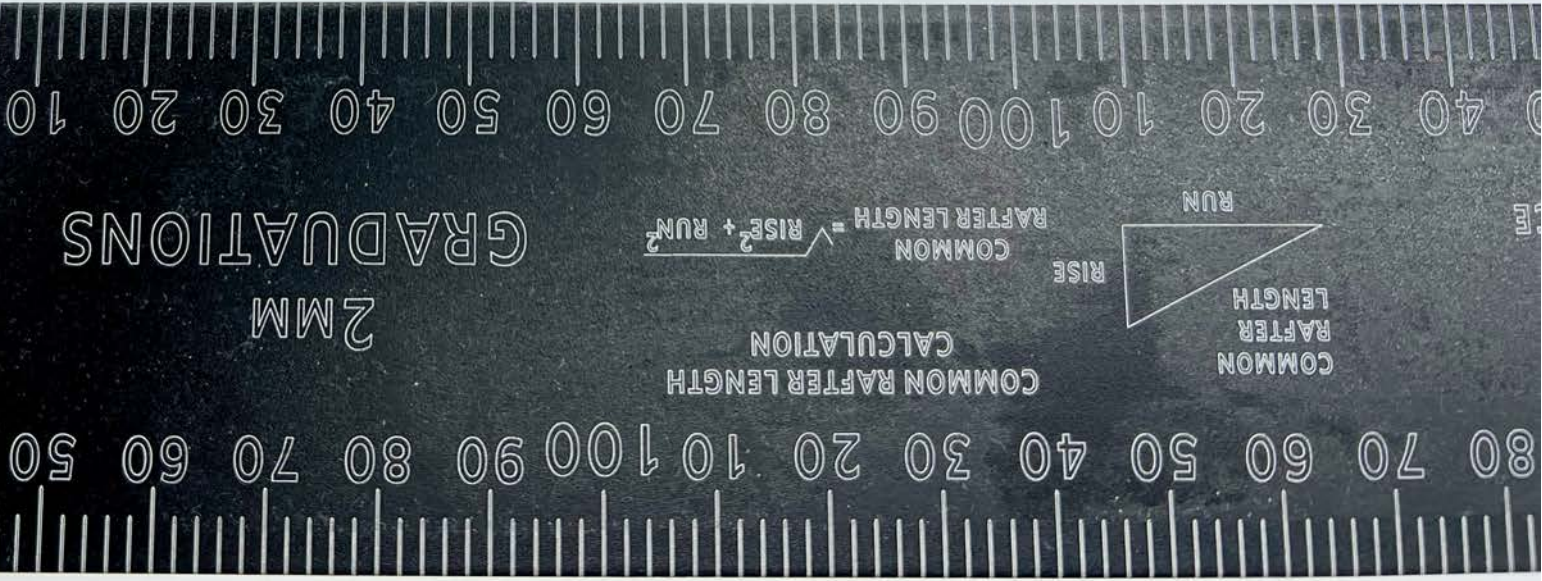
COMMON RAFTER LENGTH
CALCULATION
COMMON RAFTER LENGTH = $\sqrt{\text{RISE}^2 + \text{RUN}^2}$



COMMON
RAFTER
LENGTH

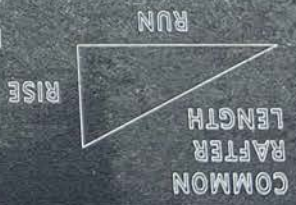
RISE

RUN

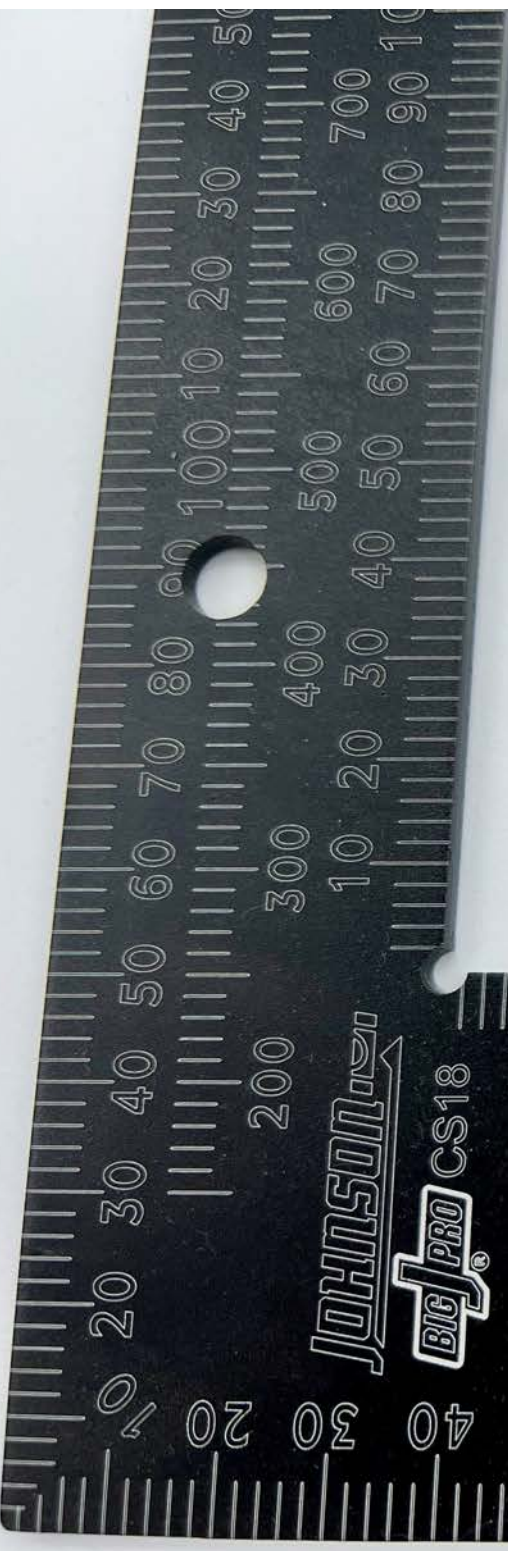
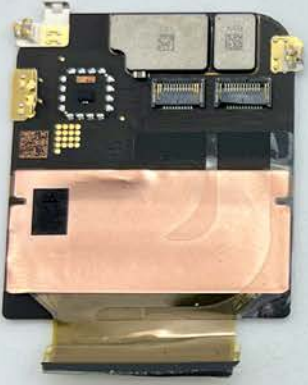


GRADUATIONS
2MM

COMMON RAFTER LENGTH
CALCULATION
COMMON RAFTER LENGTH = $\sqrt{\text{RISE}^2 + \text{RUN}^2}$

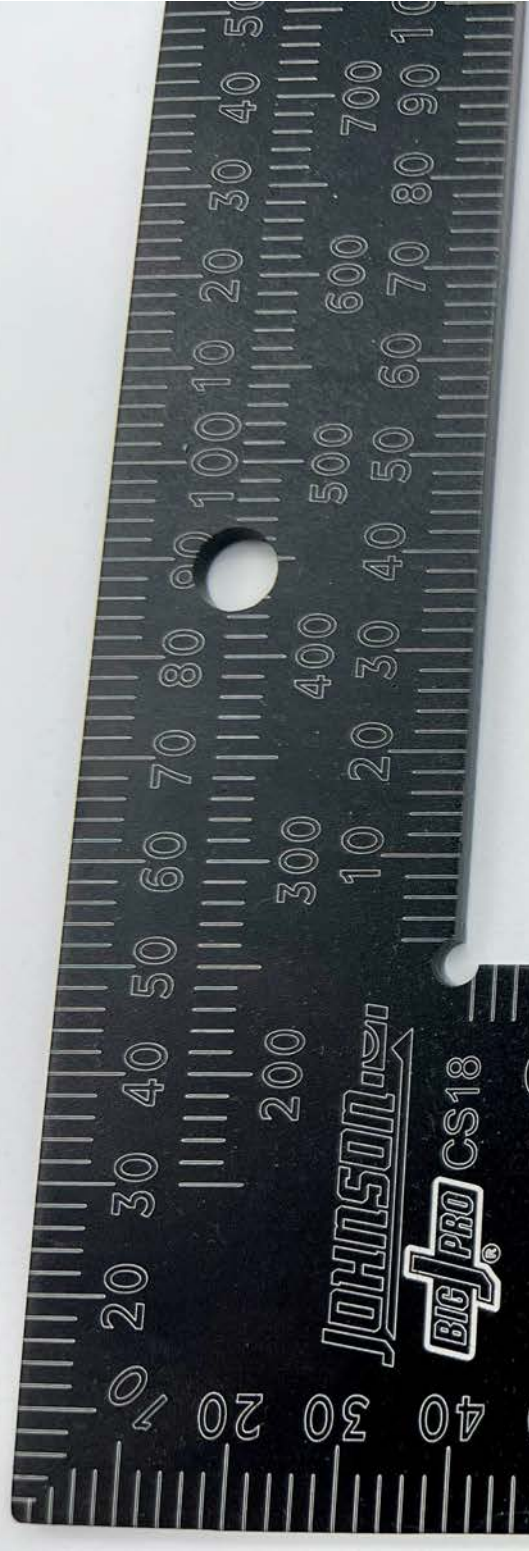


JOHNSON
BIG PRO CS18



GRADUATIONS
2MM

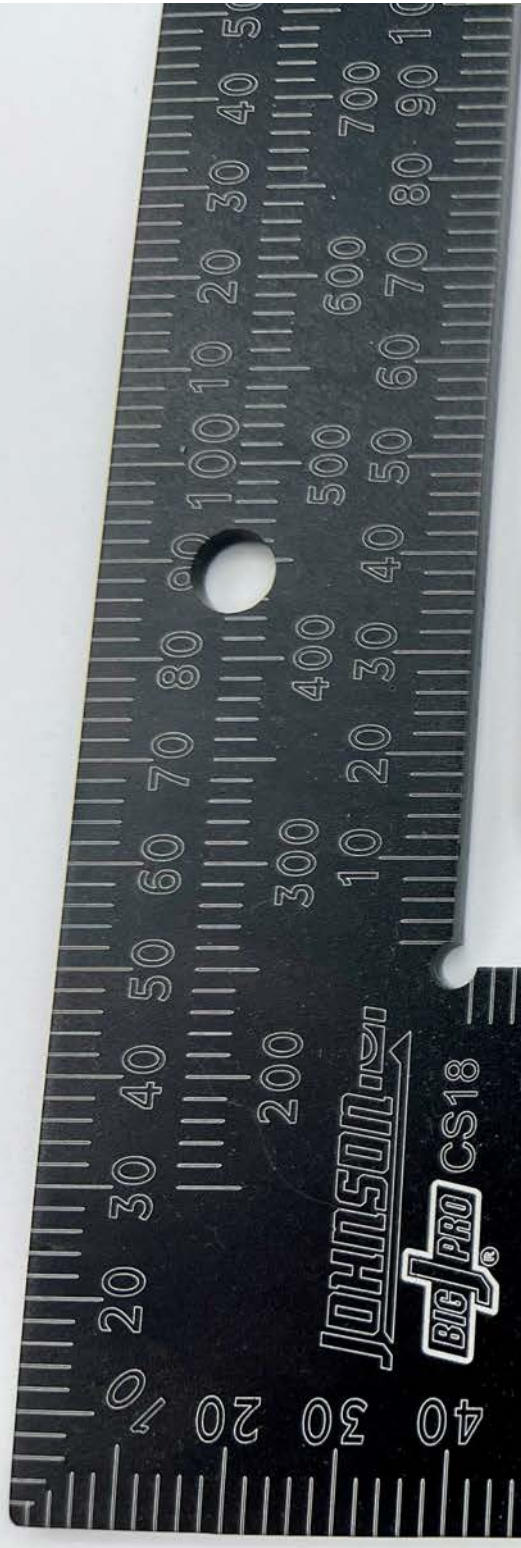




GRADUATIONS
2MM

COMMON RAFTER LENGTH
CALCULATION
COMMON RAFTER LENGTH = $\sqrt{\text{RISE}^2 + \text{RUN}^2}$





GRADUATIONS
2MM





JOHNSON
BIG PRO CS18

GRADUATIONS
2MM



0 10 20 30 40 50 60 70 80 90 100 110 120 130 140 150 160 170 180 190 200 210 220 230 240 250 260 270 280 290 300 310 320 330 340 350 360 370 380 390 400 410 420 430 440 450 460 470 480 490 500 510 520 530 540 550 560 570 580 590 600 610 620 630 640 650 660 670 680 690 700 710 720 730 740 750 760 770 780 790 800 810 820 830 840 850 860 870 880 890 900 910 920 930 940 950 960 970 980 990 1000

