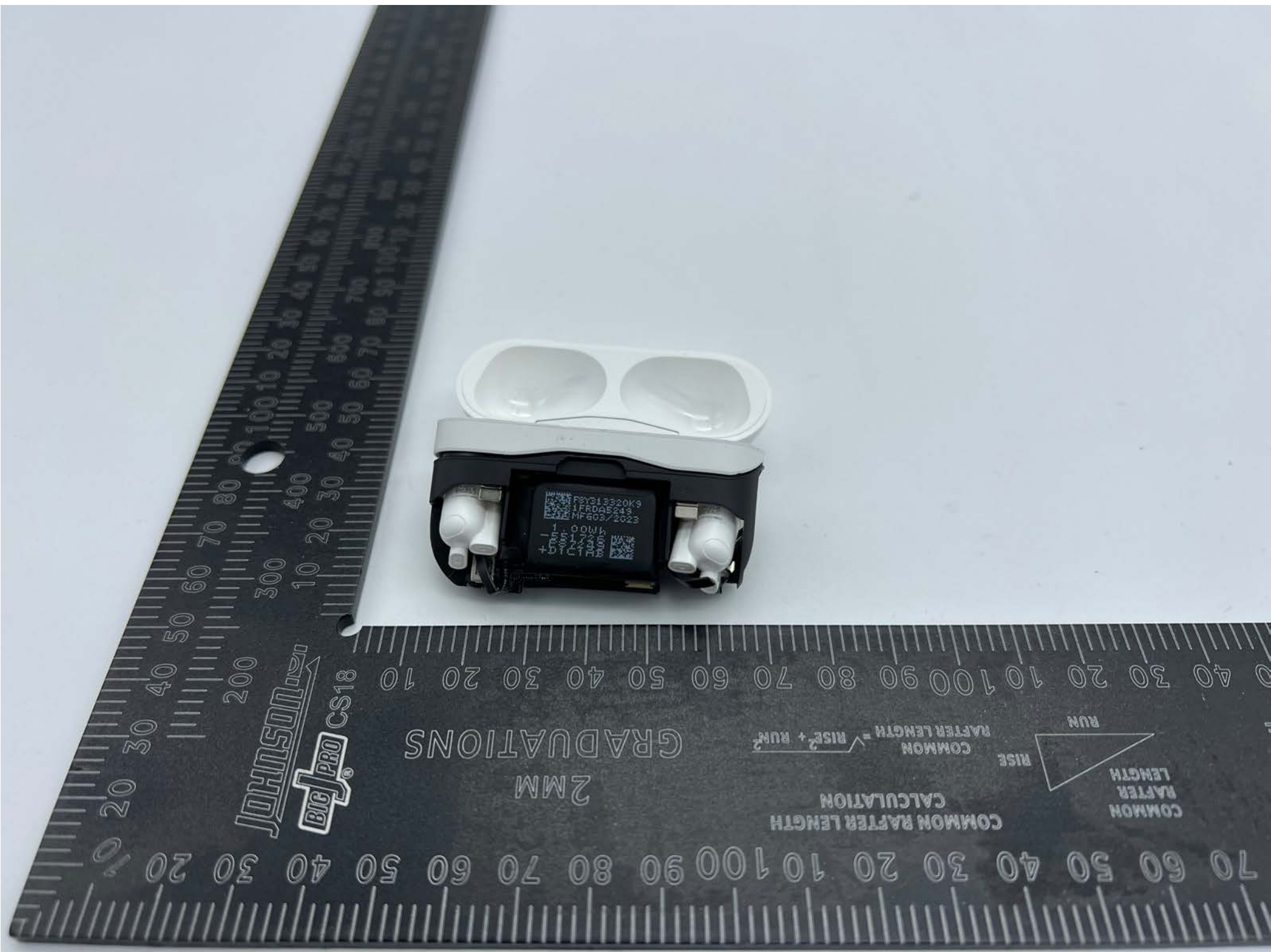


JOHNSON
BIG PRO CS18

GRADUATIONS
2MM

COMMON RAFTER LENGTH
CALCULATION
COMMON RAFTER LENGTH = $\sqrt{\text{RISE}^2 + \text{RUN}^2}$



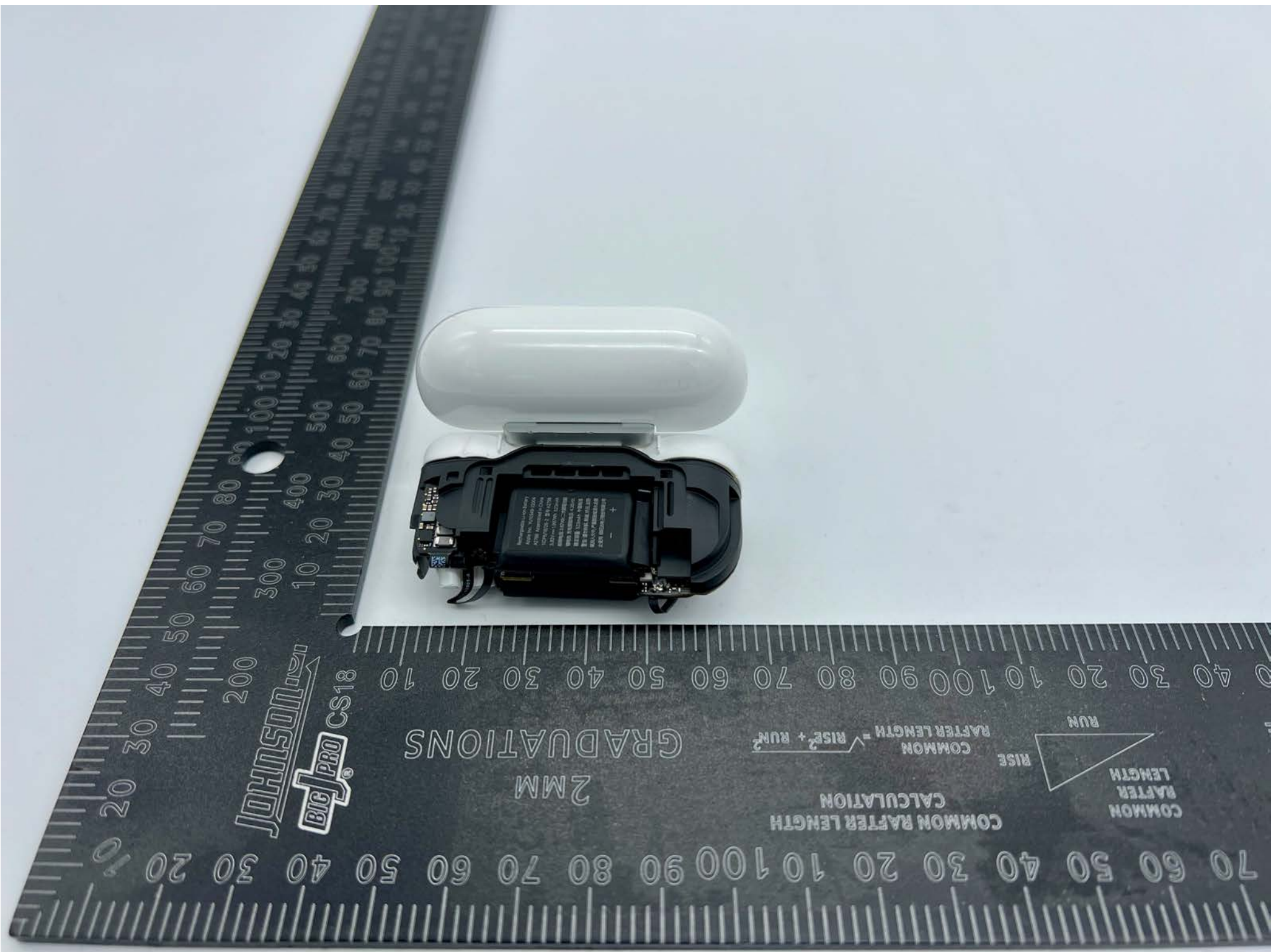


JOHNSON
BIG PRO CS18

2MM
GRADUATIONS

COMMON RAFTER LENGTH
CALCULATION
 $COMMON\ RAFTER\ LENGTH = \sqrt{RISE^2 + RUN^2}$



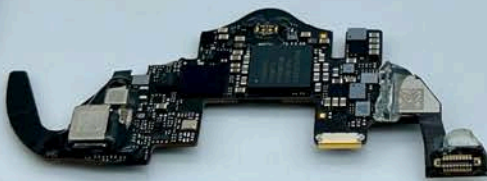
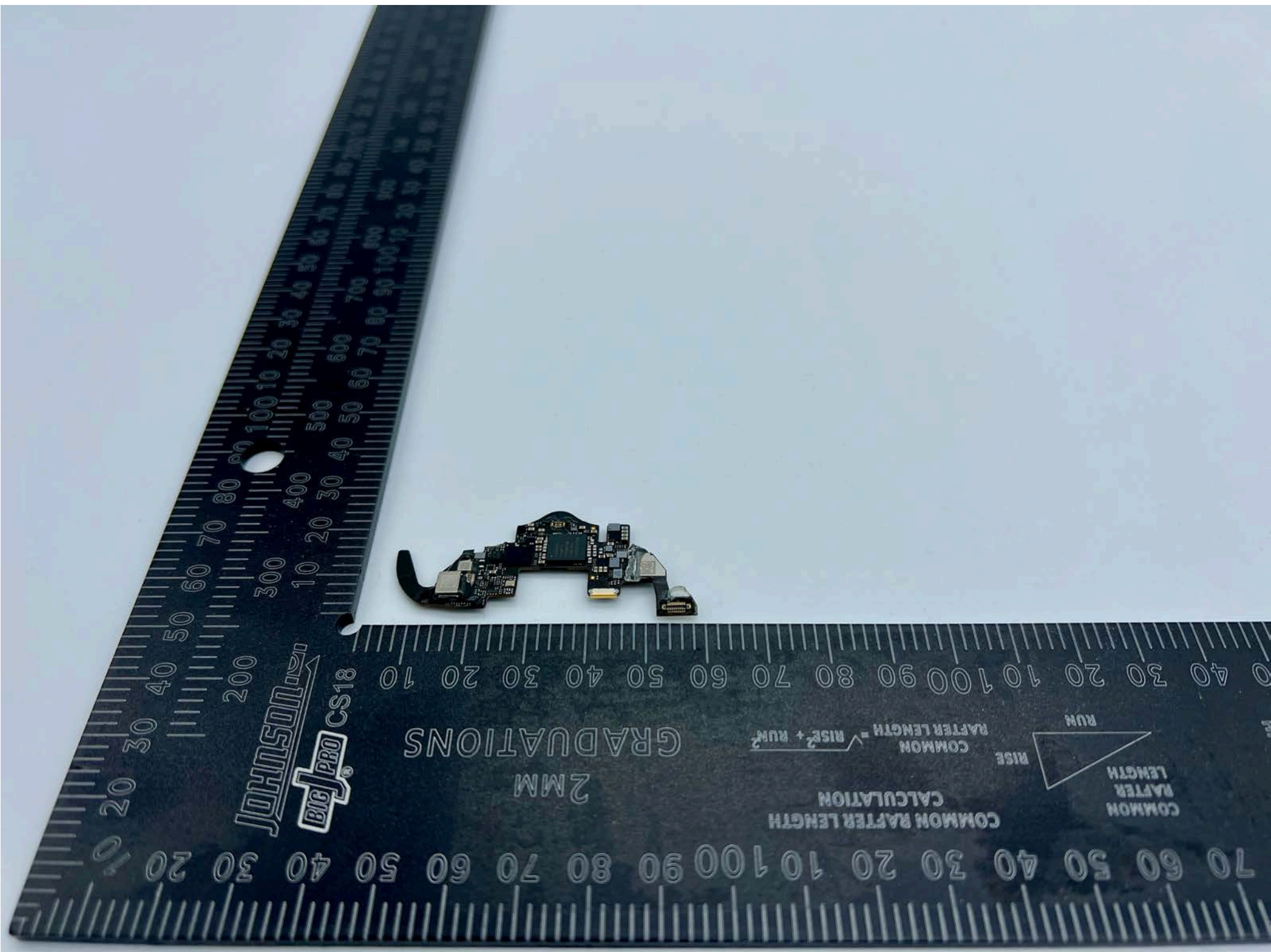


JOHNSON
BIG PRO CS18

GRADUATIONS
2MM

COMMON RAFTER LENGTH
CALCULATION
$$\text{COMMON RAFTER LENGTH} = \sqrt{\text{RISE}^2 + \text{RUN}^2}$$

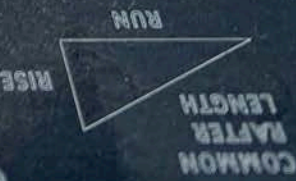


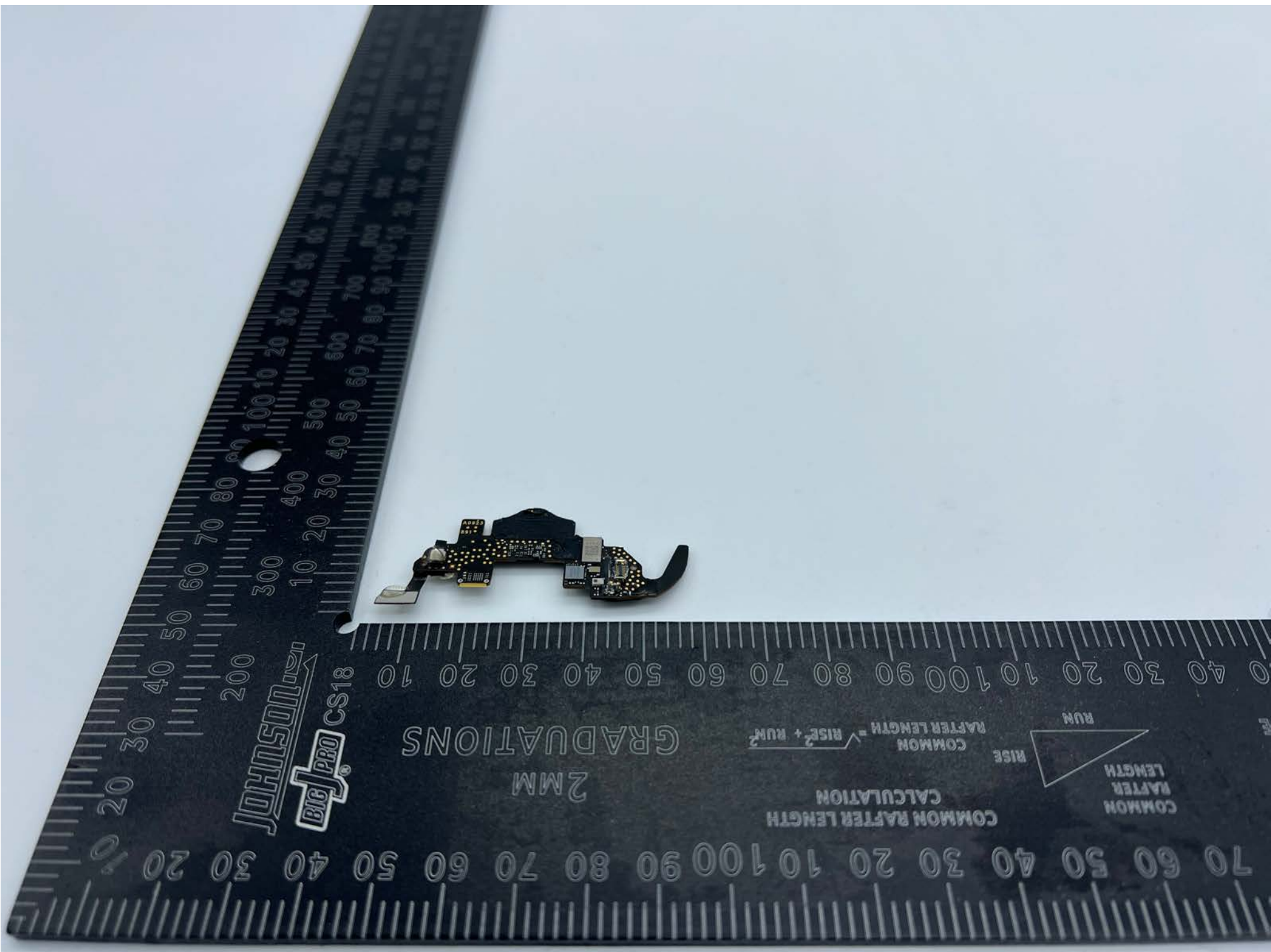


JOHNSON'S
BIG PRO CS18

2MM
GRADUATIONS

COMMON RAFTER LENGTH
CALCULATION
COMMON RAFTER LENGTH = $\sqrt{\text{RISE}^2 + \text{RUN}^2}$



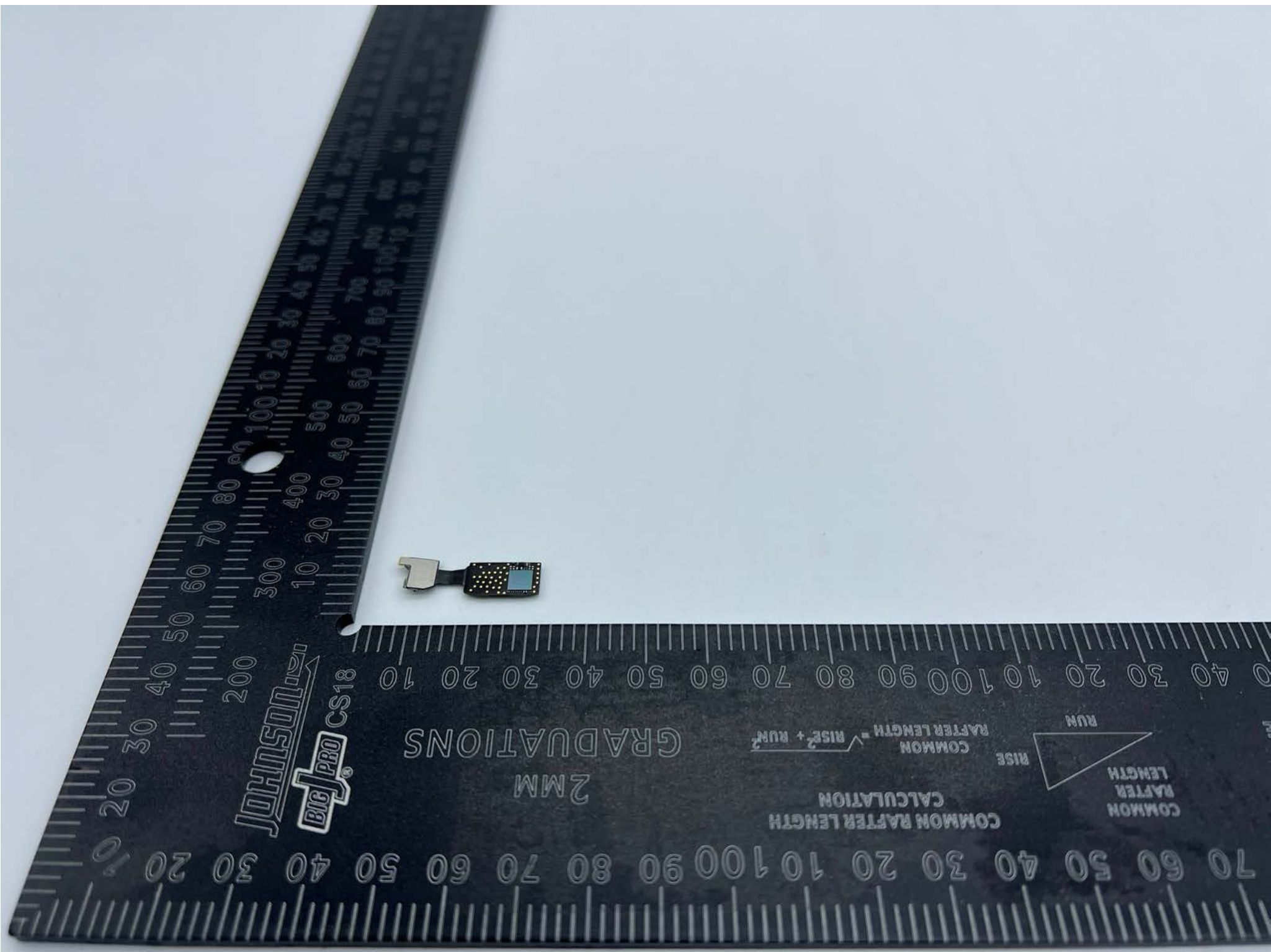


JOHNSON
BIG PRO CS18

GRADUATIONS
2MM

COMMON RAFTER LENGTH
CALCULATION
 $\text{COMMON RAFTER LENGTH} = \sqrt{\text{RISE}^2 + \text{RUN}^2}$



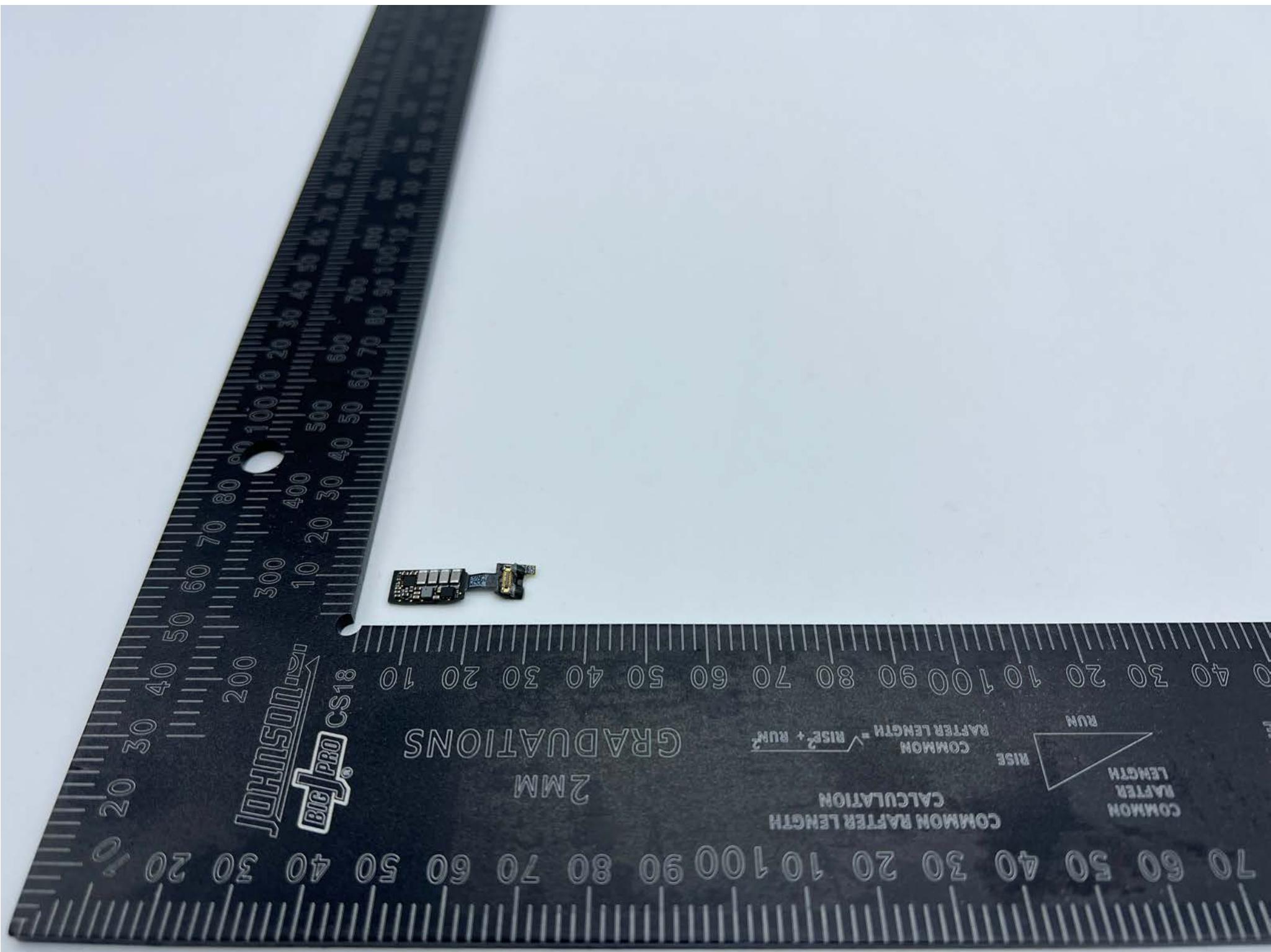


JOHNSON
BIG PRO CS18

GRADUATIONS
2MM

COMMON RAFTER LENGTH
CALCULATION
 $COMMON\ RAFTER\ LENGTH = \sqrt{RISE^2 + RUN^2}$





JOHNSON
BIG PRO CS18

GRADUATIONS
2MM

COMMON RAFTER LENGTH
CALCULATION
$$\text{COMMON RAFTER LENGTH} = \sqrt{\text{RISE}^2 + \text{RUN}^2}$$

