

APPENDIX B: SYSTEM VERIFICATION

ELEMENT

DUT: Dipole 2450.0 MHz; Type: D2450V2 - SN921

Communication System: UID: 0, CW; Frequency: 2450.0 MHz
Medium: 2450 Head; Medium parameters used:
f = 2450.0 MHz; cond = 1.86 S/m; perm = 39.5; density = 1000 kg/m³
Phantom Section: Flat; Space: 10 mm

Test Date: 06/06/2022; Ambient Temp: 22.7°C; Tissue Temp: 23.2°C

Probe: EX3DV4 - SN7427; ConvF:(7.28,7.28,7.28); Calibrated: 2022-02-22
Sensor-Surface: 1.4mm (VMS + 6p)
Electronics: DAE4 Sn1403; Calibrated: 2022-02-22
Phantom: Twin-SAM V8.0; Serial: 1944
Measurement SW: DASYS Module SAR V16.0.2.136

2450 MHz System Verification at 20 dBm (100 mW)

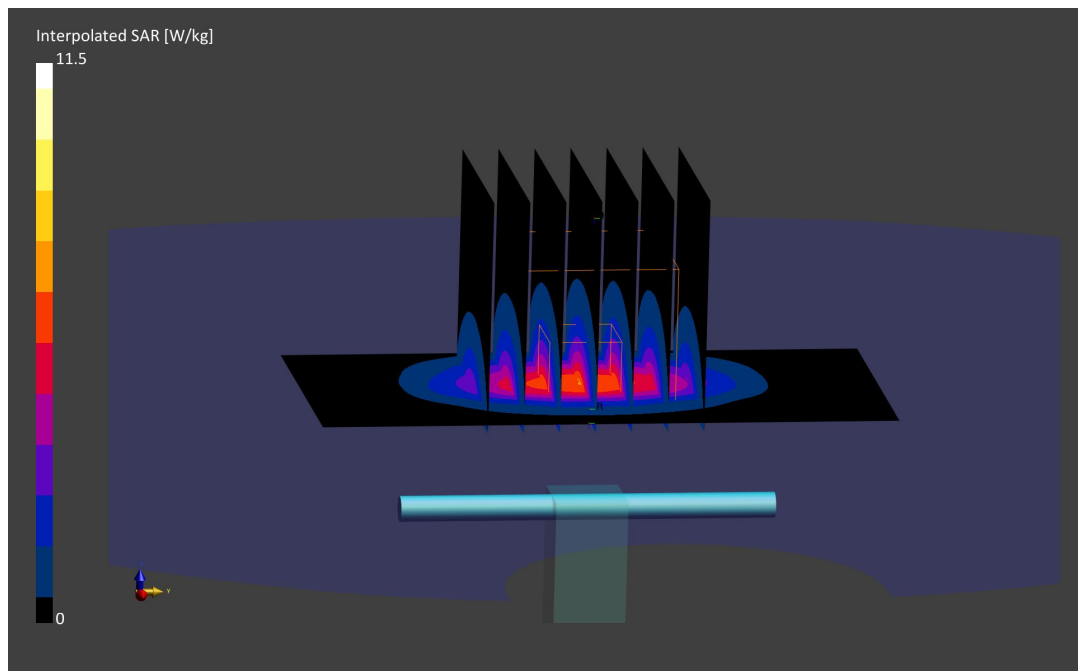
Area Scan (40.0 x 80.0): Measurement grid: dx=10.0 mm, dy=10.0 mm

Zoom Scan (30.0 x 30.0 x 30.0): Measurement grid: dx=5.0 mm, dy=5.0 mm, dz=1.5 mm; Graded Ratio: 1.5

Peak SAR (extrapolated) = 11.5 W/kg

SAR(10 g) = 2.43 W/kg

Deviation (10 g) = -4.71%;



ELEMENT

DUT: Dipole 2450.0 MHz; Type: D2450V2 - SN921

Communication System: UID: 0, CW; Frequency: 2450.0 MHz
Medium: 2450 Head; Medium parameters used:
f = 2450.0 MHz; cond = 1.88 S/m; perm = 38.4; density = 1000 kg/m³
Phantom Section: Flat; Space: 10 mm

Test Date: 06/06/2022; Ambient Temp: 20.3°C; Tissue Temp: 23.8°C

Probe: EX3DV4 - SN7674; ConvF:(7.54,7.54,7.54); Calibrated: 2021-09-06
Sensor-Surface: 1.4mm (VMS + 6p)
Electronics: DAE4 Sn1683; Calibrated: 2021-08-06
Phantom: Twin-SAM V8.0; Serial: 2071
Measurement SW: DASY Module SAR V16.0.2.83

2450 MHz System Verification at 20 dBm (100 mW)

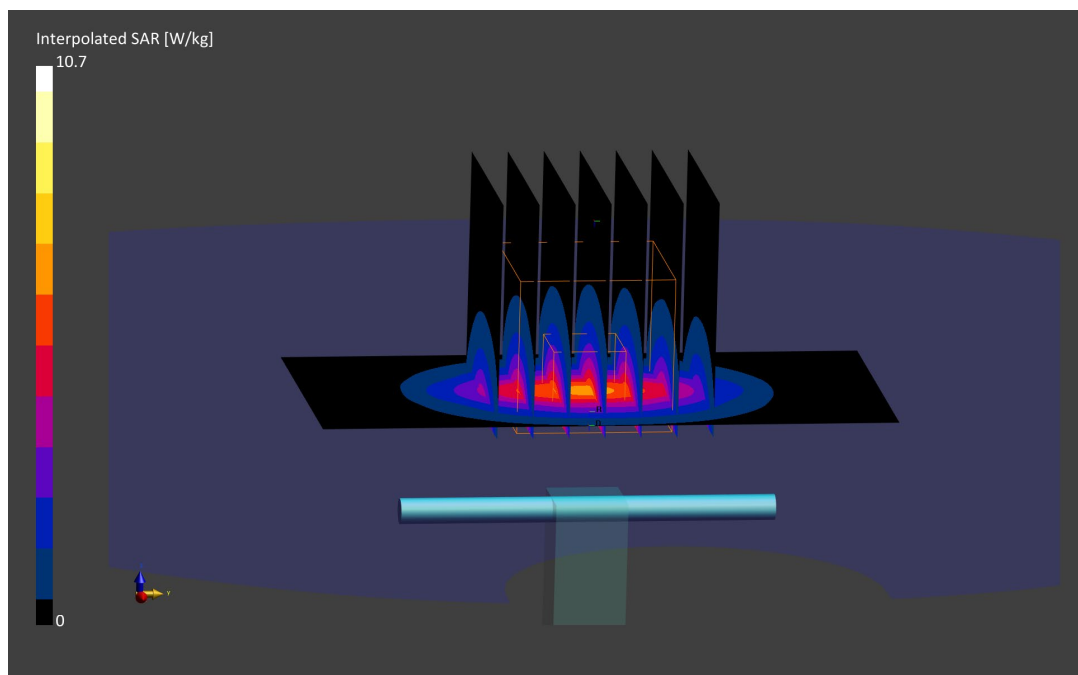
Area Scan (40.0 x 80.0): Measurement grid: dx=10.0 mm, dy=10.0 mm

Zoom Scan (30.0 x 30.0 x 30.0): Measurement grid: dx=5.0 mm, dy=5.0 mm, dz=1.5 mm; Graded Ratio: 1.5

Peak SAR (extrapolated) = 10.7 W/kg

SAR(1 g) = 5.14 W/kg; SAR(10 g) = 2.38 W/kg

Deviation (1 g) = -5.17%; Deviation (10 g) = -6.67%;



ELEMENT

DUT: Dipole 5250.0 MHz; Type: D5GHzV2 - SN1123

Communication System: UID: 0, CW; Frequency: 5250.0 MHz
Medium: 5200-5800 Head; Medium parameters used:
f = 5250.0 MHz; cond = 4.51 S/m; perm = 34.6; density = 1000 kg/m³
Phantom Section: Flat; Space: 10 mm

Test Date: 06/06/2022; Ambient Temp: 21.6°C; Tissue Temp: 20.5°C

Probe: EX3DV4 - SN7638; ConvF:(5.59,5.59,5.59); Calibrated: 2022-03-22
Sensor-Surface: 1.4mm (VMS + 6p)
Electronics: DAE4 Sn1408; Calibrated: 2022-03-21
Phantom: Twin-SAM V8.0; Serial: 2027
Measurement SW: DASY Module SAR V16.0.2.136

5250 MHz System Verification at 17 dBm (50 mW)

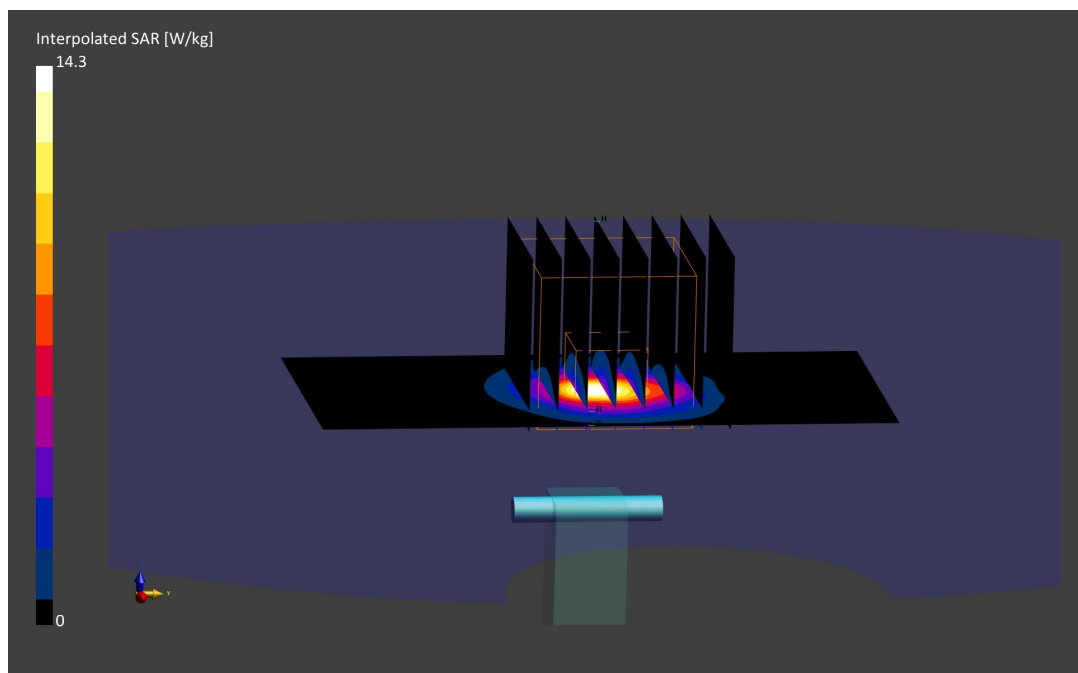
Area Scan (40.0 x 80.0): Measurement grid: dx=10.0 mm, dy=10.0 mm

Zoom Scan (22.0 x 22.0 x 22.0): Measurement grid: dx=4.0 mm, dy=4.0 mm, dz=1.4 mm; Graded Ratio: 1.4

Peak SAR (extrapolated) = 14.3 W/kg

SAR(1 g) = 3.79 W/kg; SAR(10 g) = 1.08 W/kg

Deviation (1 g) = -5.84%; Deviation (10 g) = -5.68%;



ELEMENT

DUT: Dipole 5600.0 MHz; Type: D5GHzV2 - SN1123

Communication System: UID: 0, CW; Frequency: 5600.0 MHz
Medium: 5200-5800 Head; Medium parameters used:
f = 5600.0 MHz; cond = 4.90 S/m; perm = 34.0; density = 1000 kg/m³
Phantom Section: Flat; Space: 10 mm

Test Date: 06/06/2022; Ambient Temp: 21.6°C; Tissue Temp: 20.5°C

Probe: EX3DV4 - SN7638; ConvF:(4.96,4.96,4.96); Calibrated: 2022-03-22
Sensor-Surface: 1.4mm (VMS + 6p)
Electronics: DAE4 Sn1408; Calibrated: 2022-03-21
Phantom: Twin-SAM V8.0; Serial: 2027
Measurement SW: DASY Module SAR V16.0.2.136

5600 MHz System Verification at 17 dBm (50 mW)

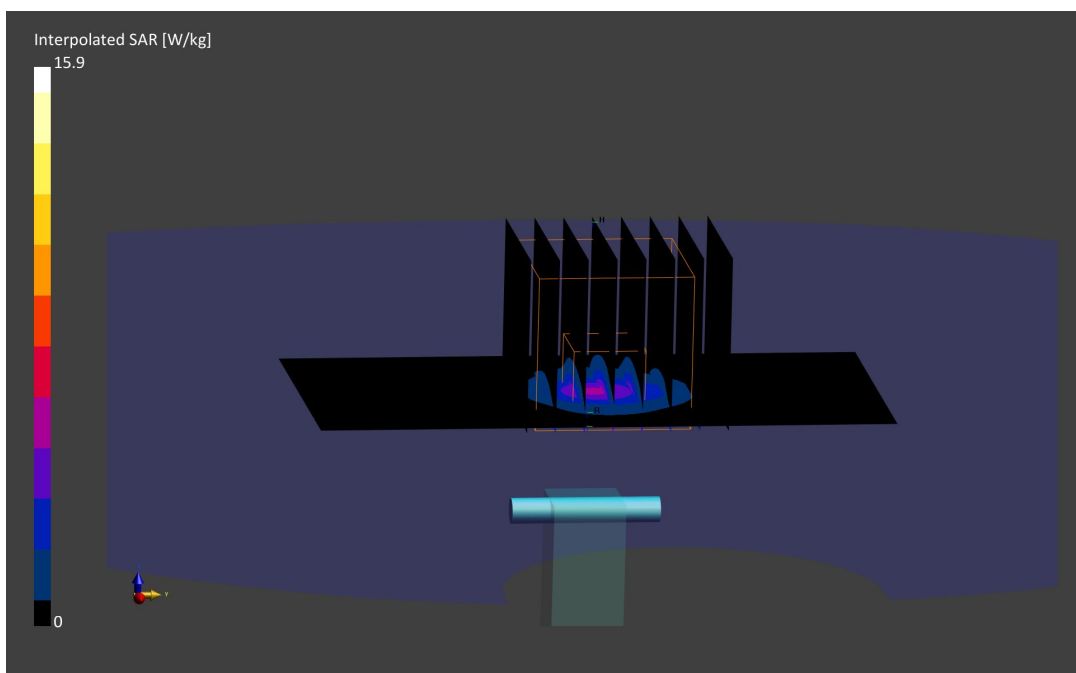
Area Scan (40.0 x 80.0): Measurement grid: dx=10.0 mm, dy=10.0 mm

Zoom Scan (22.0 x 22.0 x 22.0): Measurement grid: dx=4.0 mm, dy=4.0 mm, dz=1.4 mm; Graded Ratio: 1.4

Peak SAR (extrapolated) = 15.9 W/kg

SAR(1 g) = 3.90 W/kg; SAR(10 g) = 1.11 W/kg

Deviation (1 g) = -6.81%; Deviation (10 g) = -6.33%;



ELEMENT

DUT: Dipole 5750.0 MHz; Type: D5GHzV2 - SN1123

Communication System: UID: 0, CW; Frequency: 5750.0 MHz
Medium: 5200-5800 Head; Medium parameters used:
f = 5750.0 MHz; cond = 5.06 S/m; perm = 33.8; density = 1000 kg/m³
Phantom Section: Flat; Space: 10 mm

Test Date: 06/06/2022; Ambient Temp: 21.6°C; Tissue Temp: 20.5°C

Probe: EX3DV4 - SN7638; ConvF:(5.18,5.18,5.18); Calibrated: 2022-03-22

Sensor-Surface: 1.4mm (VMS + 6p)

Electronics: DAE4 Sn1408; Calibrated: 2022-03-21

Phantom: Twin-SAM V8.0; Serial: 2027

Measurement SW: DASY Module SAR V16.0.2.136

5750 MHz System Verification at 17 dBm (50 mW)

Area Scan (40.0 x 80.0): Measurement grid: dx=10.0 mm, dy=10.0 mm

Zoom Scan (22.0 x 22.0 x 22.0): Measurement grid: dx=4.0 mm, dy=4.0 mm, dz=1.4 mm; Graded Ratio: 1.4

Peak SAR (extrapolated) = 15.8 W/kg

SAR(1 g) = 3.81 W/kg; SAR(10 g) = 1.09 W/kg

Deviation (1 g) = -5.34%; Deviation (10 g) = -3.96%;

