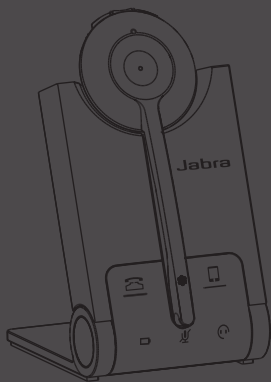


Jabra[®]
YOU'RE ON

JABRA PRO 935



User Manual

jabra.com/pro935

A BRAND BY

GN Netcom

© 2013 GN Netcom A/S. All rights reserved. Jabra® is a registered trademark of GN Netcom A/S. All other trademarks included herein are the property of their respective owners. The Bluetooth® word mark and logos are owned by the Bluetooth SIG, Inc. and any use of such marks by GN Netcom A/S is under license. (Design and specifications subject to change without notice).

MADE IN CHINA
MODEL: XXXXX



Declaration of Conformity can be found on
www.jabra.com/CP/US/declarations-of-conformity

1. WELCOME	4
2. PRODUCT OVERVIEW	5
2.1 HEADSET	
2.2 BASE	
2.3 OPTIONAL ACCESSORIES	
3. CHARGE THE HEADSET	7
3.1 BATTERY STATUS	
4. HOW TO WEAR	8
4.1 HEADBAND	
4.2 EARHOOK	
4.3 NECKBAND (OPTIONAL ACCESSORY)	
5. HOW TO CONNECT.....	10
5.1 CONNECT TO PC (SOFTPHONE)	
5.2 CONNECT TO MOBILE DEVICE (BLUETOOTH)	
5.3 CONNECT USING NFC	
6. HOW TO USE	12
6.1 MULTIPLE CALL HANDLING	
7. VOICE GUIDANCE	14
8. SOFTWARE	15
8.1 JABRA PC SUITE	
8.2 UPDATE FIRMWARE	
8. SUPPORT	16
8.1 FAQ	
8.2 HOW TO CARE FOR YOUR JABRA DEVICE	
9. TECHNICAL SPECIFICATIONS	17

1. WELCOME

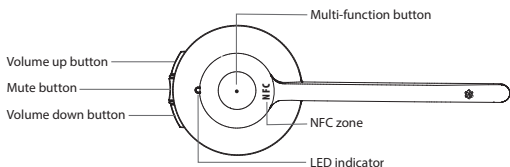
Thank you for using the Jabra PRO 935. We hope you will enjoy it!

JABRA PRO 935 FEATURES

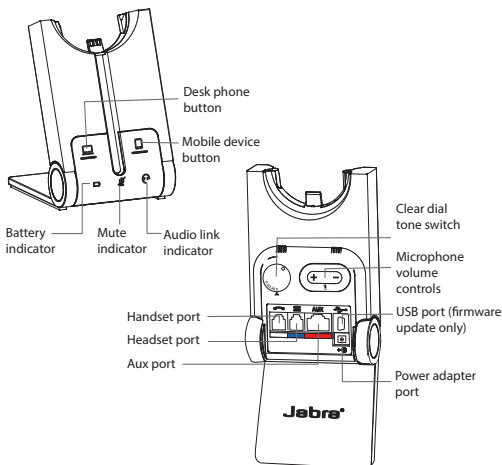
- XXXX
-
-
-
-

2. PRODUCT OVERVIEW

2.1 HEADSET

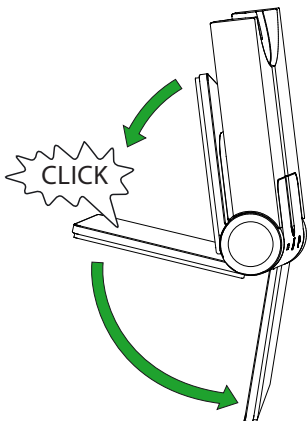


2.2 BASE



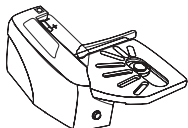
FOLDABLE BASE STAND

The Jabra PRO 935 base stand can be folded into three positions: open, closed and standing.

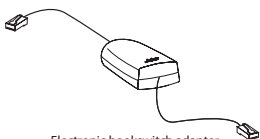


2.3 OPTIONAL ACCESSORIES

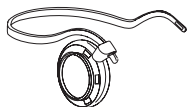
The following Jabra PRO accessories are available separately. Visit jabra.com for a full accessory overview.



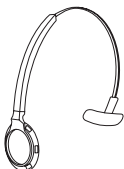
Jabra GN1000



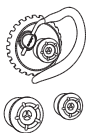
Electronic hookswitch adapter
(actual product may vary from illustration)



Neckband attachment



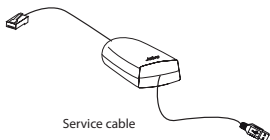
Replacement headband attachment



Replacement earhook, with
earbuds



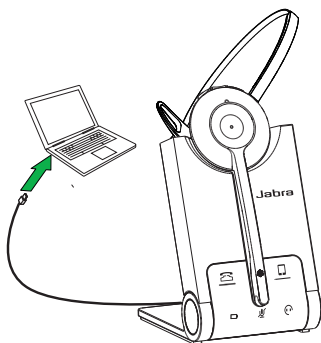
Replacement ear cushions



Service cable

3. CHARGE THE HEADSET

The headset will charge when docked in the base, and the base is connected to a PC.

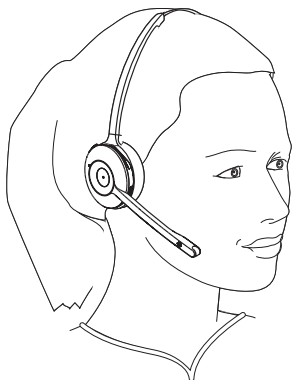


It takes approx. 3 hours to charge the headset.

3.1 BATTERY STATUS

BATTERY TABLE

4. HOW TO WEAR



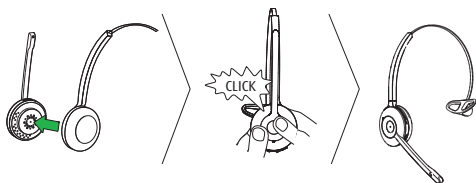
The Jabra PRO 935 headset can be worn in three different wearing-styles:

- Headband
- Earhook
- Neckband (optional accessory)

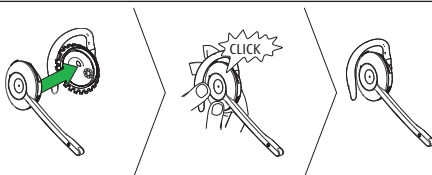
All wearing-styles can be worn on either the left or right ear.

NOTE: It is important to position the microphone close to the mouth for maximum noise cancellation.

4.1 HEADBAND



4.2 EARHOOK



NOTE: The earhook is not supplied in all regions, and can be purchased on jabra.com.

4.3 NECKBAND (OPTIONAL ACCESSORY)

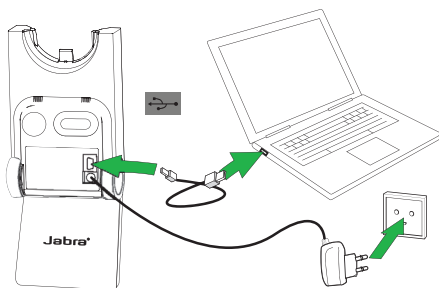


NOTE: The neckband can be purchased on jabra.com

5. HOW TO CONNECT

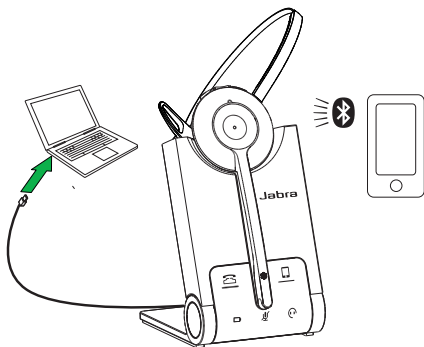
5.1 CONNECT TO PC (SOFTPHONE)

1. Connect the base to your PC using the supplied USB cable.
2. Plug the base into a power supply using the supplied wall charger.
3. Dock the headset in the base.



5.2 CONNECT TO MOBILE DEVICE (BLUETOOTH)

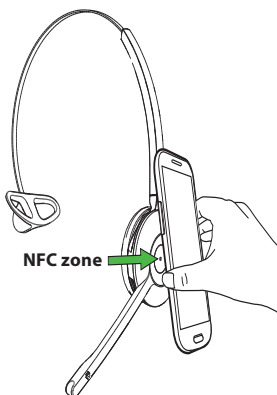
1. Connect the base to a power supply.
2. Press and hold (5 secs) the Mobile phone button on the base.
3. Pairing mode will be announced in the headset after 3 seconds, and the LED will light up blue.
4. Follow the voice-guided pairing instructions in the headset to pair to your Bluetooth device.



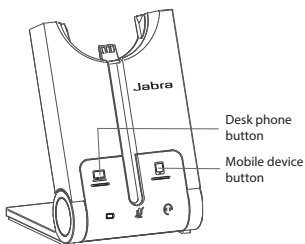
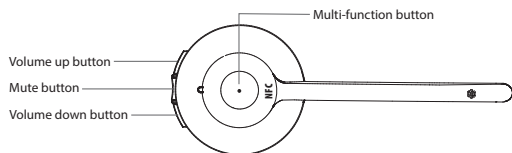
5.3 CONNECT USING NFC



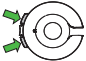
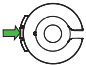

NFC is a faster, simpler way to connect using Bluetooth.

1. Ensure NFC is enabled on the mobile device.
2. Tap the NFC zone on the mobile device against the NFC zone on the headset.





6. HOW TO USE



	FUNCTION	ACTION
	Answer call	Tap the Multi-function button
	End/reject call	Tap the Multi-function button
	Adjust speaker volume	Tap the Volume up or Volume down button
	Mute/un-mute	Tap the Mute button
	Switch between desk phone and mobile phone	Tap the Desk phone button or Mobile device button on the base

6.1 MULTIPLE CALL HANDLING

The headset can accept and handle multiple calls simultaneously.

	CALL FUNCTION	HOW TO DO IT
	End current call and answer incoming call	Tap the Multi-function button
	Switch between held call and active call	Press and hold (2 secs) the Multi-function button
	Put current call on hold and answer incoming call	Press and hold (2 secs) the Multi-function button
	Reject incoming call, when on a call	Tap the Multi-function button

7. VOICE GUIDANCE

The headset plays a variety of voice announcements to indicate status and connection guidance.

LISTEN	WHAT YOU HEAR
	Go to the Bluetooth menu on your mobile device and connect to Jabra PRO
	Power on
	Power off
	Low battery
	Mobile connected
	Mobile disconnected
	PC connected
	PC disconnected
	Mute on
	Mute off

8. SOFTWARE

8.1 JABRA PC SUITE

Jabra PC Suite is a collection of software designed to support, manage and enable optimal functionality for Jabra devices.

Download the latest version - jabra.com/pcsuite

It is highly recommended to install Jabra PC Suite.

8.2 UPDATE FIRMWARE

Updating firmware improves performance or adds new functionality to your Jabra PRO 935. Jabra PC Suite must be installed to update firmware.

To update firmware:

- Launch the Jabra Firmware Updater installed with Jabra PC Suite, or
- Check for the latest version via Jabra Control Center > Help > Check for Updates.

9. SUPPORT

9.1 FAQ

View the full FAQ on [Jabra.com/pro935](https://www.jabra.com/pro935).

9.2 HOW TO CARE FOR YOUR JABRA DEVICE

- Always store the headset with the power off.
- Avoid storage at extreme temperatures (below $-XX^{\circ}\text{C}/-XX^{\circ}\text{F}$ or above $XX^{\circ}\text{C}/XX^{\circ}\text{F}$). This can shorten battery life and may affect speaker operation.
- Do not expose the headset or base to rain or other liquids.

10. TECHNICAL SPECIFICATIONS

JABRA PRO 935	SPECIFICATION
Weight:	Headset: XX Base: XX
Dimensions:	Headset: H XXmm x W XXmm x L XXmm Base: H XXmm x W XXmm x L XXmm
Microphones:	
Speakers:	
Operating range:	XXm/XXft (phone dependent)
Bluetooth version:	3.0
Paired devices:	Up to 8 paired devices, Two active device connected at a time
Supported Bluetooth profiles:	A2DP(v1.2), Hands Free Profile (v1.6), Headset profile(v1.2)
Talk time:	Up to XX hours
Standby time:	Up to XX days
Operating temperature:	-XX°C to XX°C (XX°F to XX°F)
Storage temperature:	-XX°C to XX°C (-XX°F to XX°F)
Pairing passkey or PIN:	0000

