



Jabra HANDSET™ 450 for Cisco

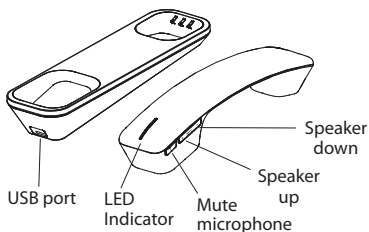


CONTENTS

JABRA HANDSET 450 FOR CISCO OVERVIEW.....	2
CONNECTING.....	3
HOW TO USE THE JABRA HANDSET 450 FOR CISCO	4
TECHNICAL SPECIFICATIONS.....	6

JABRA HANDSET 450 FOR CISCO

OVERVIEW

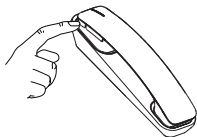


TURNING ON/OFF

The Jabra Handset 450 for Cisco will always be powered on when docked in the handset cradle, and the cradle is plugged into a USB port.



To turn off the Jabra Handset 450 for Cisco, press and hold (5 secs) the mute microphone button. Press the mute microphone button again, to turn back on. The Jabra Handset 450 for Cisco cannot be turned off if the cradle is plugged into a PC that is turned on.



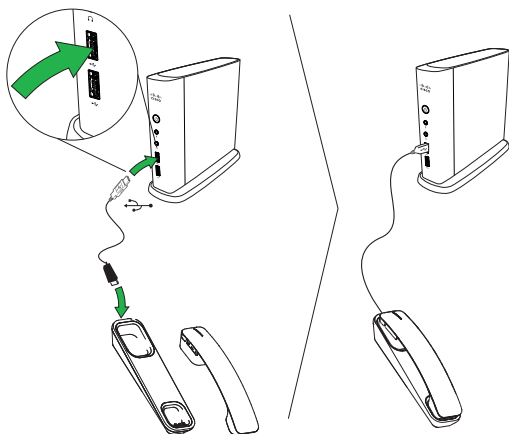
The Jabra Handset 450 for Cisco will automatically power off when out of range of the handset cradle for 4 minutes or longer.

CONNECTING

The Jabra Handset 450 for Cisco is plug-and-play.

1. Connect the USB cable to the handset cradle, and then plug the USB cable into any available USB port on your PC.
2. Dock the Jabra Handset 450 for Cisco in the handset cradle.

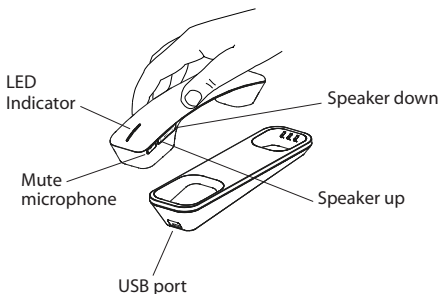
To pair a new handset with the cradle, simply dock the new handset in the cradle. Only one handset can be paired with the cradle at a time.




CHARGING

The Jabra Handset 450 for Cisco will charge when docked in the handset cradle. The handset cradle must be plugged into a USB port, and the PC must be turned on. Low battery will be indicated when there is less than 1 hour of remaining talk time.

HOW TO USE THE JABRA HANDSET 450 FOR CISCO



	Answer call	Pick up the handset
	End call	Dock the handset in the cradle
+ — -	Adjust speaker volume	Tap the Volume up or Volume down button
	Mute microphone	Tap the Mute microphone button

WHAT THE LIGHTS MEAN

What you see	What it means
IMAGE/SWF	Power on
IMAGE/SWF	Power off
IMAGE/SWF	The Jabra Handset 450 for Cisco is in pairing mode

IMAGE/SWF	Incoming call
IMAGE/SWF	Active call
IMAGE/SWF	Voicemail
IMAGE/SWF	The handset is out of range of the handset cradle
IMAGE/SWF	The Jabra Handset 450 for Cisco microphone is muted
IMAGE/SWF	Device firmware update mode

TECHNICAL SPECIFICATIONS

Weight:

Cradle: 175 g

Handset: 185 g

Assembled unit: 360 g

Dimensions:

Cradle: L 211 mm x W 57 mm x H 36 mm

Handset: L 203 mm x W 44 mm x H 47 mm

Assembled unit: L 211 mm x W 57 mm x H 60 mm

Microphone:

Omni-directional

Speaker:

Dynamic, 28 mm

Operating range:

Up to 20 m (66 feet)

DECT version:

Dect 6.0 (CAT - iq)

Talk time:

Up to 8 hours

Standby time:

Up to 40 hours

Charging time:

Less than 3 hours

Operating temperature:

-10°C to 55°C (14° F to 131° F)

Storage temperature:

-40° C to 70° (-40° F to 158° F)

Jabra®
YOU'RE ON

A BRAND BY

GN Netcom

© 2012 GN Netcom US, Inc. All rights reserved. Jabra® is a registered trademark of GN Netcom A/S. All other trademarks included herein are the property of their respective owners..

© 2012 GN Netcom A/S. All rights reserved. Jabra® is a registered trademark of GN Netcom A/S. All other trademarks included herein are the property of their respective owners.

Made in China
MODEL: OTE11



www.jabra.com