

NEED MORE HELP?

For all support go to [jabra.com/support](https://jabra.com/support)

[jabra.com/speak710](https://jabra.com/speak710)

81-04212 B



# Jabra Speak 710

Jabra



**Jabra** GN

## Quick start guide

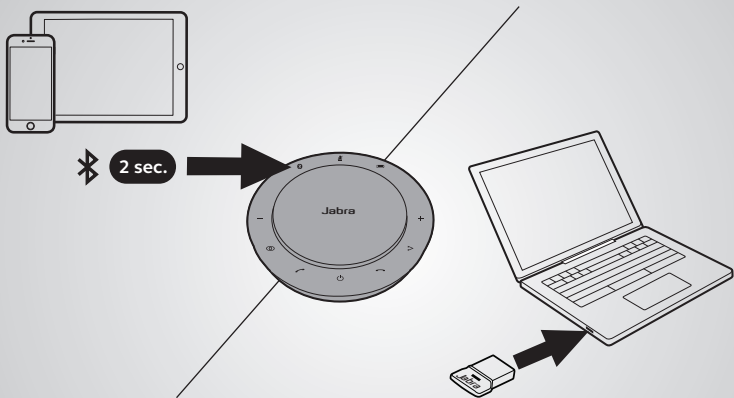
EN / FR / ES / PT / CS / CT / JP / TH / MY / KR / IN

**GN** Making Life Sound Better

BC

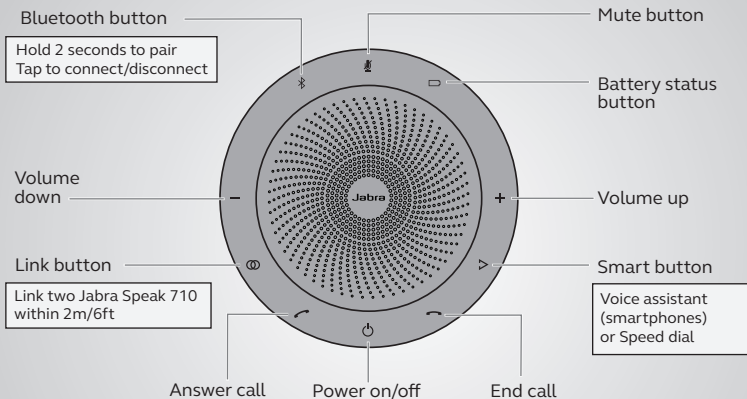
# How to connect

using Bluetooth or USB dongle



The Jabra Speak 710 lasts for up to 15 hours of talk time.  
It takes approx. 3 hours to charge using the USB cable.

# How to use



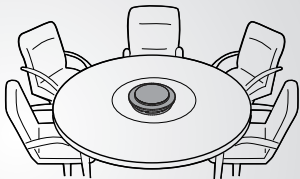
Personalize your Jabra Speak 710 using the Jabra Direct software.  
Download for free at [jabra.com/direct](https://jabra.com/direct)

# Where to position

Desk



Small meeting room

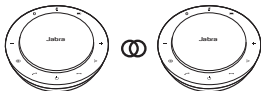
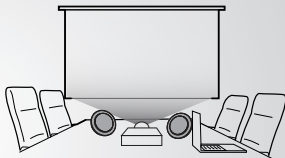



When sitting in front of the Jabra Speak 710 use the stand to better direct the audio.

## Large meeting room



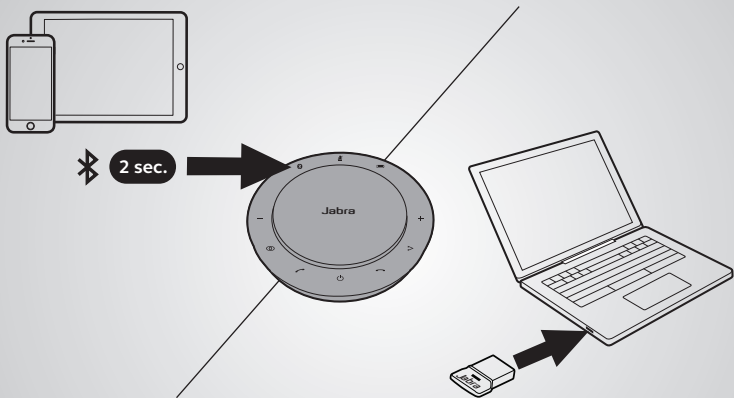
## Stereo media



Tap  to link two Jabra Speak 710 within 2m/6ft.

# Comment le connecter

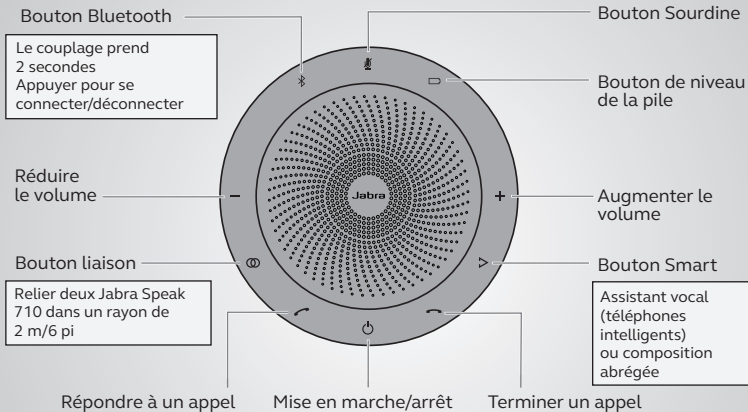
avec Bluetooth ou une clé USB



Avec le Jabra Speak 710, plus de 15 heures d'autonomie de conversation.  
Un chargement complet avec câble USB prend environ 3 heures.

# Comment l'utiliser

FRANÇAIS



Personnaliser votre Jabra Speak 710 en utilisant le logiciel Jabra Direct. Télécharger gratuitement sur [jabra.com/direct](http://jabra.com/direct)

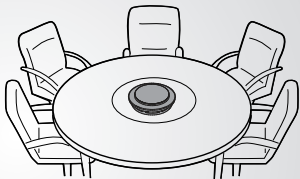


# Où le placer

Bureau



Petite salle de réunion



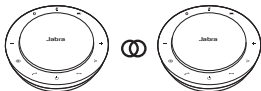
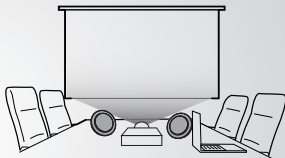
Une fois assis en face du Jabra Speak 710  
utiliser le support pour mieux diriger le son.




## Grande salle de réunion



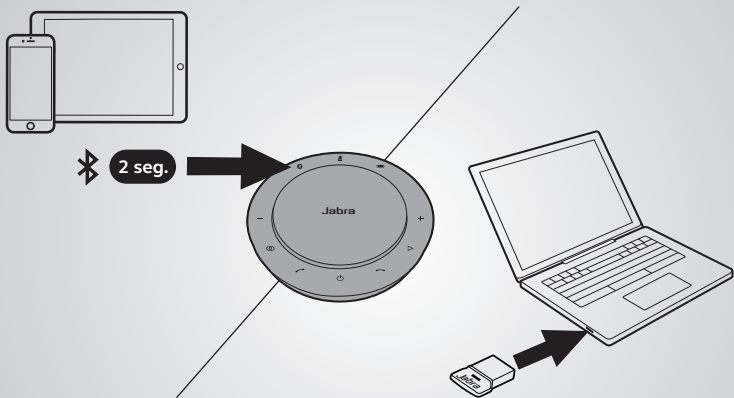
## Support stéréo



Appuyer sur  pour relier les deux Jabra Speak 710 dans un rayon de 2 m/6 pi.

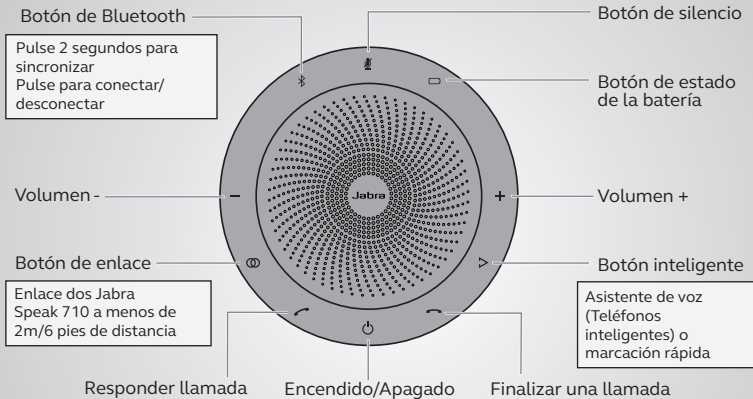
# Cómo conectarlo

con Bluetooth o llave electrónica USB



Jabra Speak 710 ofrece hasta 15 horas de conversación.  
Lleva aproximadamente 3 horas cargar con el cable USB.

# Cómo utilizarlo



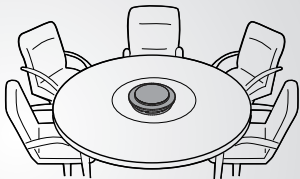
Personalice su Jabra Speak 710 con el software Jabra Direct.  
Descárguelo gratis en [jabra.com/direct](http://jabra.com/direct)

# Dónde colocarlo

Escritorio



Sala de juntas pequeña

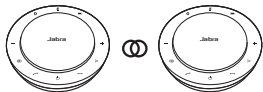
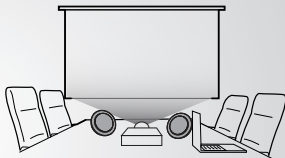



Cuando se sienta frente al Jabra Speak 710 use la base para dirigir mejor el audio.

## Sala de juntas grande



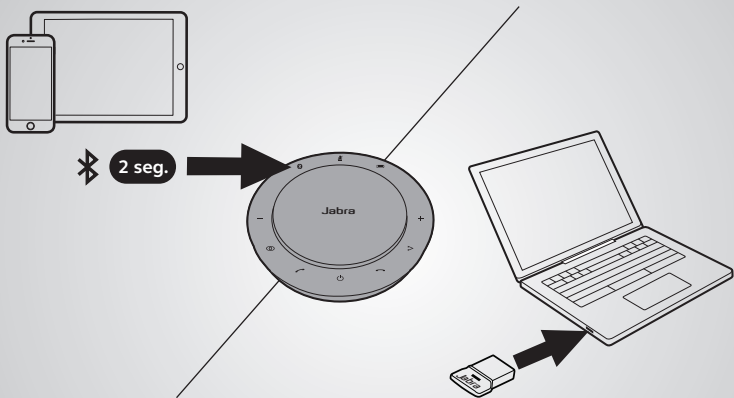
## Sistemas estereofónicos



Pulse  para enlazar dos Jabra Speak 710  
A menos de 2m/6 pies.

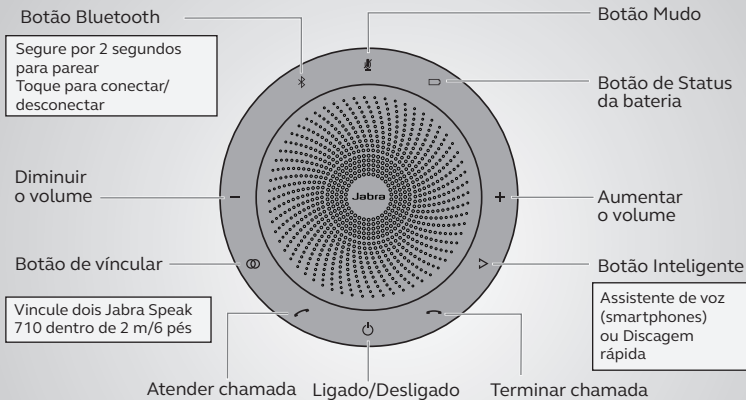
# Como conectar-se

usando Bluetooth ou dongle USB



O Jabra Speak 710 dura até 15 horas para tempo de fala.  
Leva aproximadamente 3 horas para carregar com cabo USB.

# Como usar



Personalize o seu Jabra Speak 710 usando o software Jabra Direct.  
Baixe gratuitamente em [jabra.com/direct](http://jabra.com/direct)

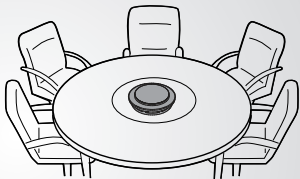


# Onde posicionar

Mesa



Pequena sala de reunião

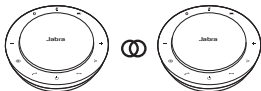
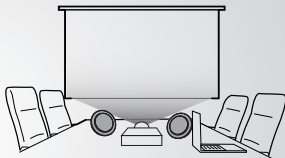



Ao se sentar em frente ao Jabra Speak 710 use o suporte para direcionar melhor o áudio.

## Grande sala de reunião



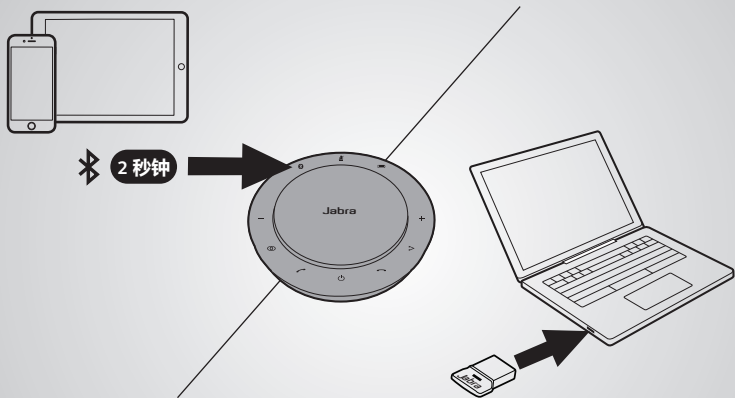
## Mídia estéreo



Toque em  para vincular dois Jabra Speak 710 dentro de 2 m/6 pés.

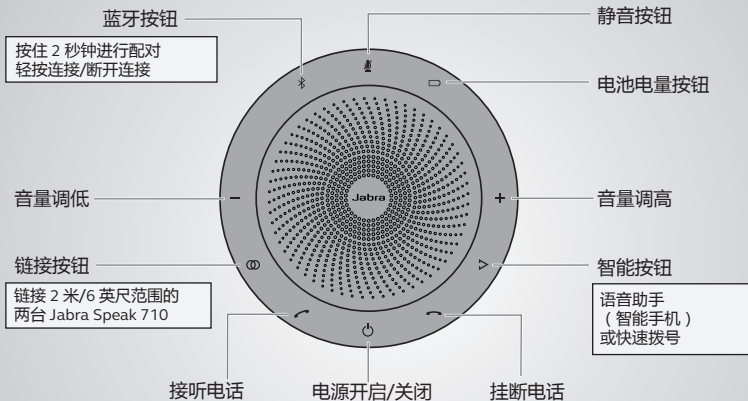
# 如何连接

使用蓝牙或 USB 适配器



Jabra Speak 710 可持续通话长达 15 小时。  
使用 USB 线缆充电约需 3 小时

# 如何使用



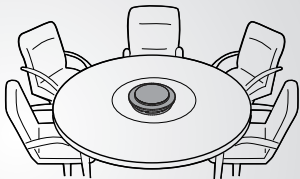
使用 Jabra Direct 软件个性化您的 Jabra Speak 710  
从 [jabra.com/direct](http://jabra.com/direct) 免费下载

# 放在哪里

## 桌面



## 小型会议室

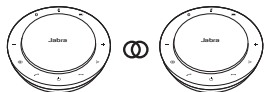
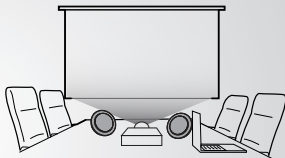


坐在 Jabra Speak 710 的前方时，  
使用支架以便更好地控制音频的方向

## 大型会议室



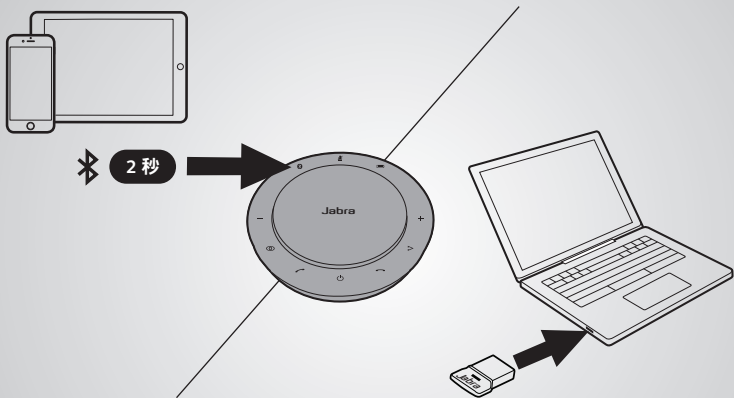
## 立体声媒体



轻按Ⓞ以链接 2 米/6 英尺范围的  
两台 Jabra Speak 710

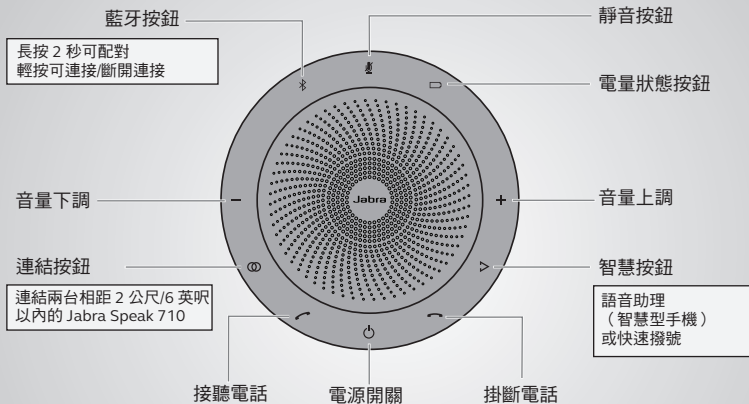
# 如何連接

使用藍牙或 USB 接收器



Jabra Speak 710 提供長達 15 小時的通話時間。  
用 USB 線充電約需 3 小時。

# 如何使用



利用 Jabra Direct 軟體可對 Jabra Speak 710 進行個人化設定。  
請至 [jabra.com/direct](http://jabra.com/direct) 免費下載。

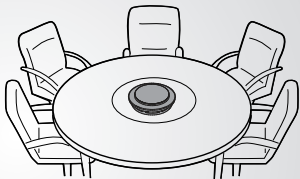


# 擺設位置

## 辦公桌



## 小會議室

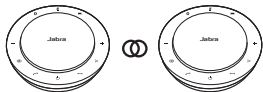
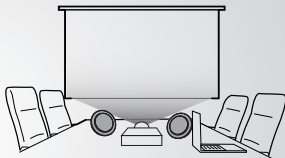



若坐在 Jabra Speak 710 正前方，  
使用腳架可讓聲音對得更準。

## 大會議室



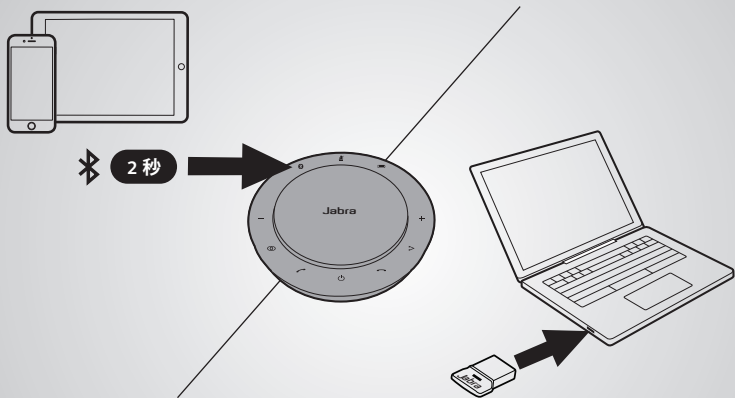
## 立體聲媒體



輕按  可連結兩台相距 2 公尺/6 英尺以內的 Jabra Speak 710。

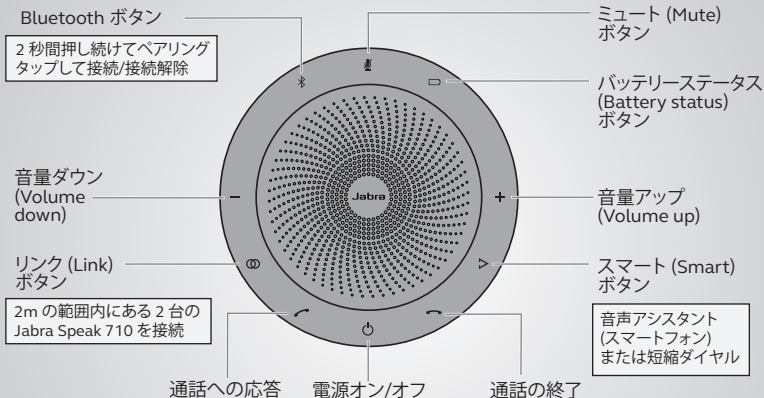
# 接続方法

Bluetooth または USB ドングルを使用する



Jabra Speak 710 の連続通話時間は、最大 15 時間です。  
USB ケーブルを使用する充電には約 3 時間かかります。

# 使用方法



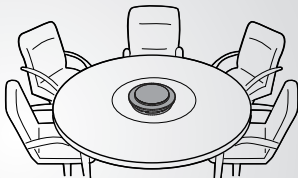
Jabra Direct ソフトウェアを使用して Jabra Speak 710 を  
カスタマイズ [jabra.com/direct](https://jabra.com/direct) から無料でダウンロード

# 使用場所

## デスク



## 小さな会議室

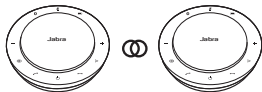
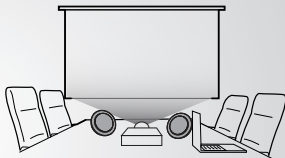


Jabra Speak 710 の前に座る場合  
スタンドを使用すると音声の伝達が向上します。

## 大きな会議室



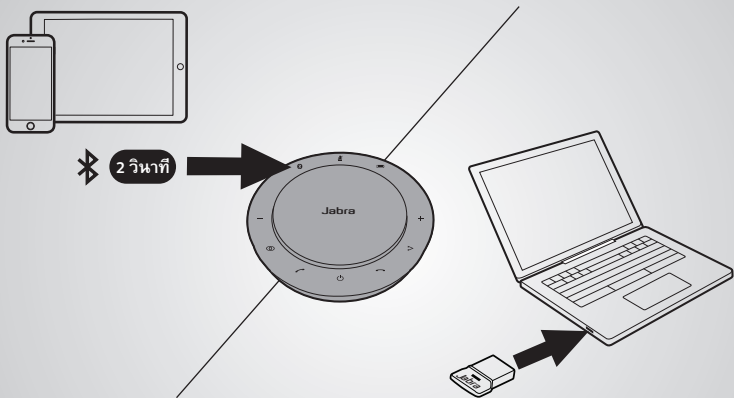
## ステレオメディア



⊙ タップして 2m の範囲内にある 2 台の Jabra Speak 710 を接続。

# วิธีเชื่อมต่อ

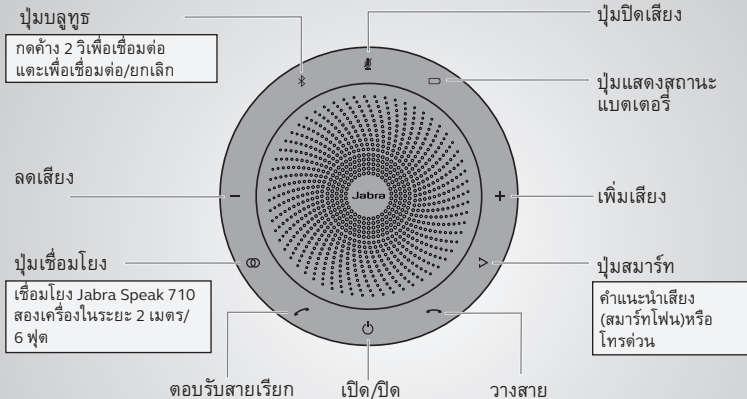
โดยใช้บลูทูธหรือ USB



Jabra Speak 710 สามารถใช้สนทนาได้นานถึง 15 ชั่วโมง  
จะใช้เวลาประมาณ 3 ชั่วโมงในการชาร์จแบตเตอรี่ผ่านสาย USB

# วิธีใช้

ภาษาไทย



ปรับแต่งการตั้งค่า Jabra Speak 710 ของคุณโดยใช้ซอฟต์แวร์ Jabra Direct ดาวน์โหลดฟรีได้ที่ [jabra.com/direct](http://jabra.com/direct)

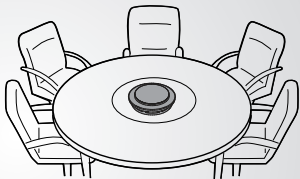


# ตำแหน่งสำหรับใช้งาน

โต๊ะ



ห้องประชุมขนาดเล็ก

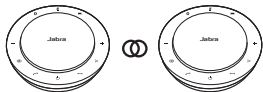
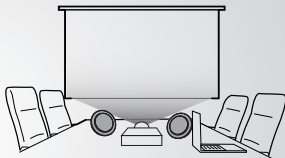



เมื่อนั่งด้านหน้าของ Jabra Speak 710  
ใช้ขาตั้งเพื่อให้ได้ยินเสียงชัดเจนยิ่งขึ้น

## ห้องประชุมขนาดใหญ่

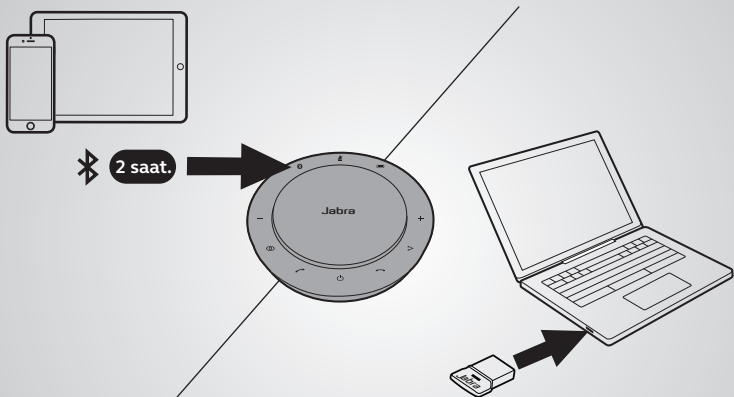


## สื่อสเตอร์ไอ



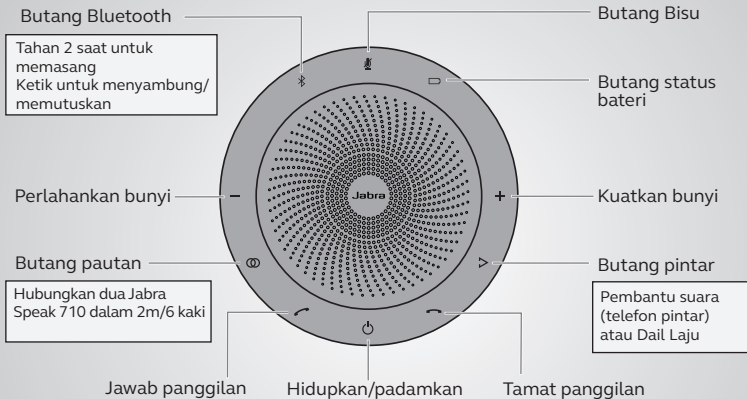
แต่ละ  เพื่อเชื่อมโยง Jabra Speak 710  
สองเครื่อง ในระยะ 2 เมตร/6 ฟุต

# Cara untuk menyambung menggunakan Bluetooth atau anak kunci USB



Jabra Speak 710 tahan sehingga 15 jam masa bercakap. Ia mengambil kira-kira 3 jam untuk mengecas menggunakan kabel USB.

# Cara menggunakan



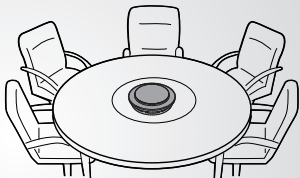
Peribadikan Jabra Speak 710 anda menggunakan perisian Jabra Direct. Muat turun secara percuma di [jabra.com/direct](http://jabra.com/direct)

# Tempat untuk meletak

Meja



Bilik mesyuarat kecil

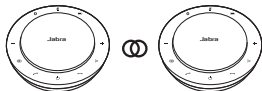
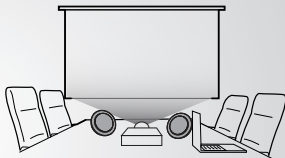



Semasa duduk di depan Jabra Speak 710 gunakan sangga untuk mengarahkan audio dengan lebih baik.

## Bilik mesyuarat besar



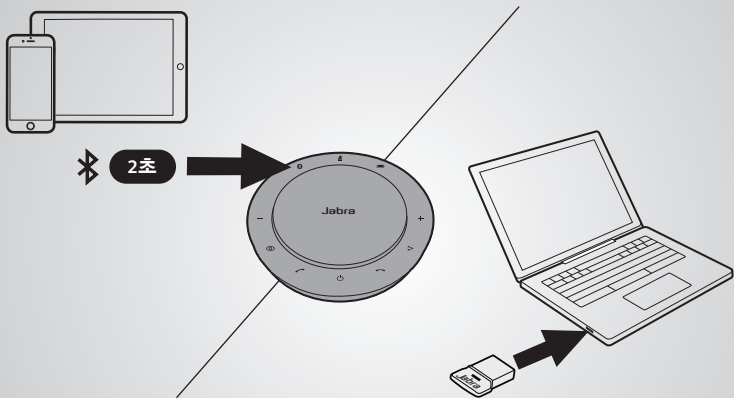
## Media stereo



Ketik  untuk menyambung dua Jabra Speak 710 dalam 2m/6 kabl.

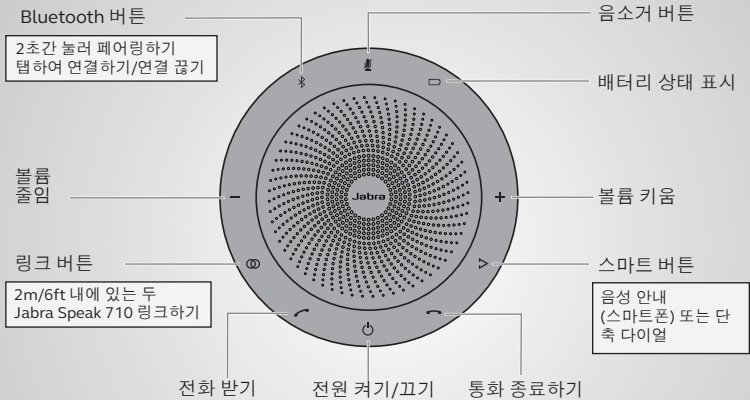
# 연결하는 방법

Bluetooth 또는 USB 동글 사용



Jabra Speak 710의 최대 통화 시간은 15시간입니다.  
USB 케이블로 충전하는 데에는 약 3 시간이 걸립니다.

# 사용 방법



Jabra Direct 소프트웨어를 사용하여 Jabra Speak 710를 사용자 정의합니다. [jabra.com/direct](http://jabra.com/direct)에서 무료 다운로드하기

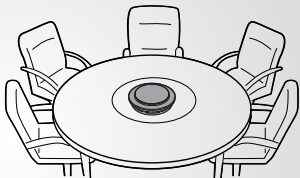


# 배치

데스크



작은 회의실

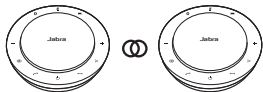
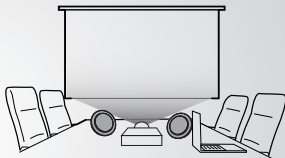



Jabra Speak 710 앞에 앉을 때는 스탠드를 사용하여 오디오 방향을 적합하게 맞출 수 있습니다.

## 큰 회의실



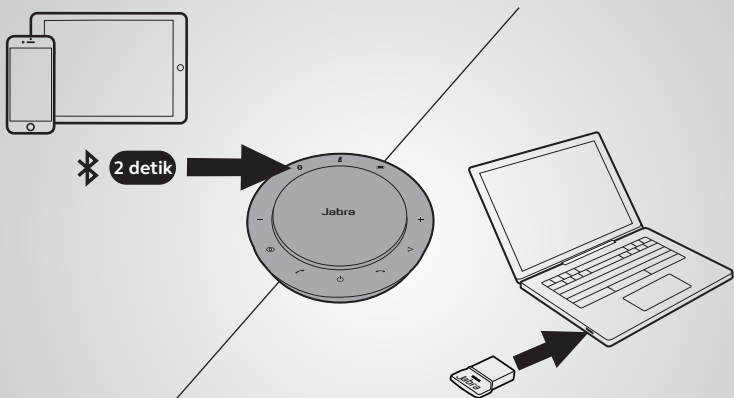
## 스테레오 미디어



탭하여  두 Jabra Speak 710를  
2m/6ft 범위 내에서 연결합니다.

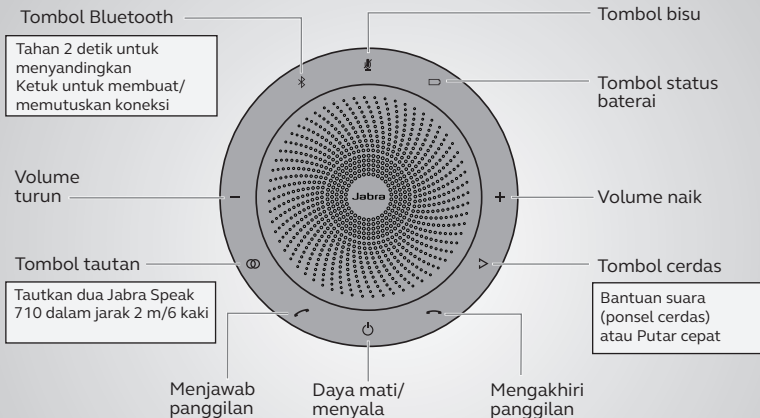
# Cara membuat koneksi

menggunakan dongle Bluetooth atau USB



Jabra Speak 710 tahan hingga 15 jam durasi bicara. Diperlukan sekitar 3 jam untuk mengisi baterai menggunakan kabel USB.

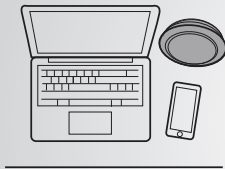
# Cara penggunaan



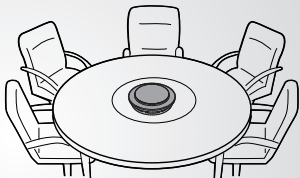
Personalisasikan Jabra Speak 710 Anda menggunakan perangkat lunak Jabra Direct. Unduh secara gratis dari [jabra.com/direct](http://jabra.com/direct)

# Di mana menempatkan

Meja



Ruang rapat kecil

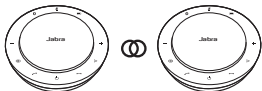
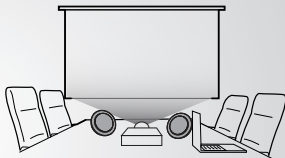



Saat duduk di depan Jabra Speak 710 gunakan penahan untuk mengarahkan audio secara lebih baik.

## Ruang rapat besar



## Media stereo



Ketuk  untuk menautkan dua Jabra Speak 710 dalam jarak 2 m/6 kaki.



本产品符合中国[电器电子产品有害物质限制使用管理办法]-简称中国ROHS，  
本产品及其包装材料可能含有有害物质的名称和含量，如下所示：

部件名称	有害物质					
	铅 (Pb)	汞 (Hg)	镉 (Cd)	六价铬 (Cr (VI))	多溴联苯 (PBB)	多溴二苯醚 (PBDE)
电子元器件	X	0	0	0	0	0
连接器	X	0	0	0	0	0
麦克风	X	0	0	0	0	0
交流电源插头 (若提供了交流充电器)	X	0	0	0	0	0

本表格依据SJ/T 11364 的规定编制。

0: 表示该有害物质在该部件所有均质材料中的含量低于GB/T 26572规定的限量要求。

X: 表示该有害物质至少在该部件的某一均质材料中的含量超出GB/T 26572规定的限量要求。  
所有显示 X 的情况，是按照欧盟 RoHS 采用了容许的豁免指标。

如本手册所述，在正常使用条件下，本产品的环保使用期为 10 年。在此期间，产品不会泄露任何危险物质。

本产品可以回收，必须按照当地法规处理。

© 2017 GN Audio A/S. All rights reserved. Jabra® is a trademark of GN Audio A/S. The Bluetooth® word mark and logos are registered trademarks owned by the Bluetooth SIG, Inc. and any use of such marks by GN Audio A/S is under license.

---

MADE IN CHINA

MODEL: PHS040W / END040W

FCC ID: BCE-PHS040W / END040W

IC: 2386C-PHS040W/ END040W

CMIIT ID: 2017DJ0327

GB 15629.1102-2003



MSIP-CMA  
GN-PHS040W  
MSIP-CRM-  
GN-END040W



CCAH17LP0150T8  
CCAH17LP0460T0



006-000457  
006-000458

