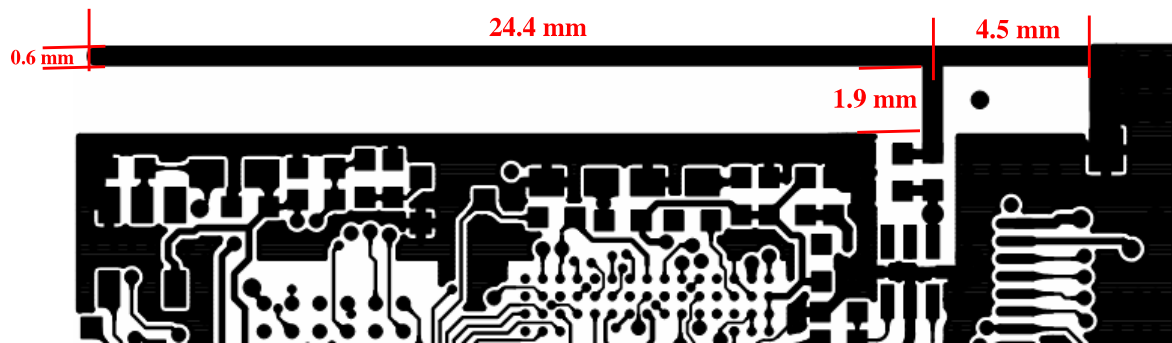


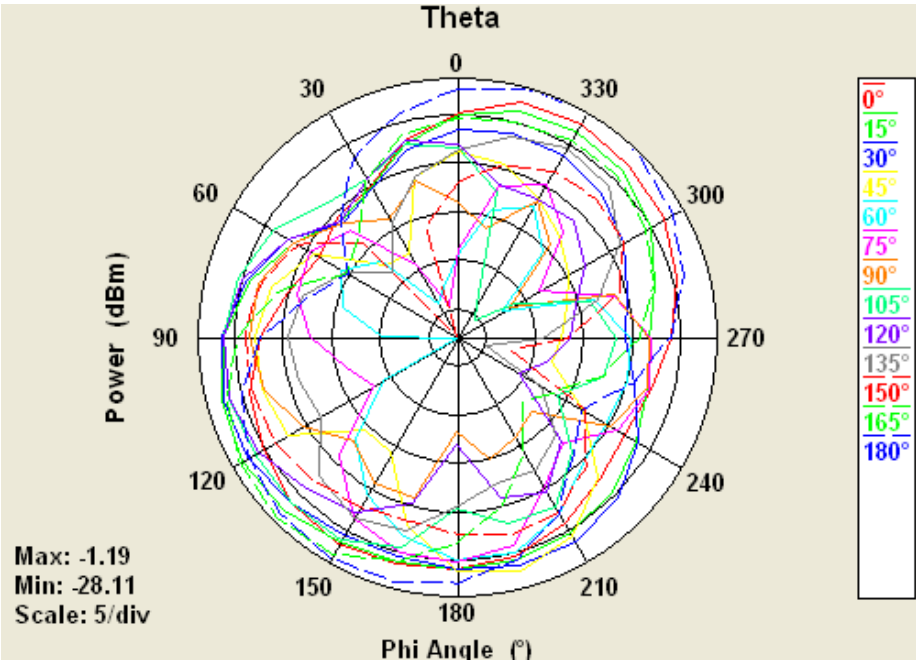
OTE10 Antenna Specification

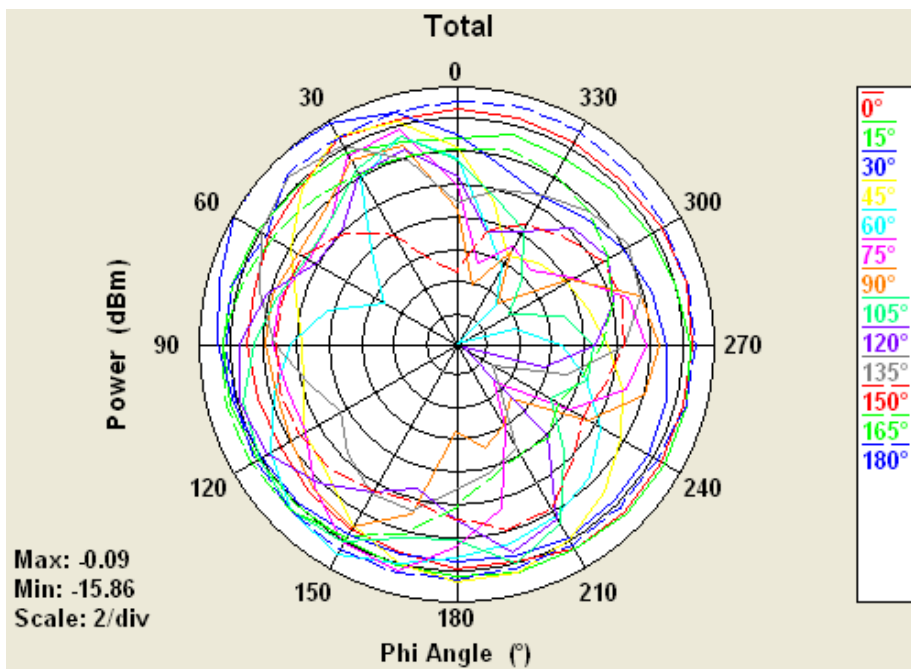
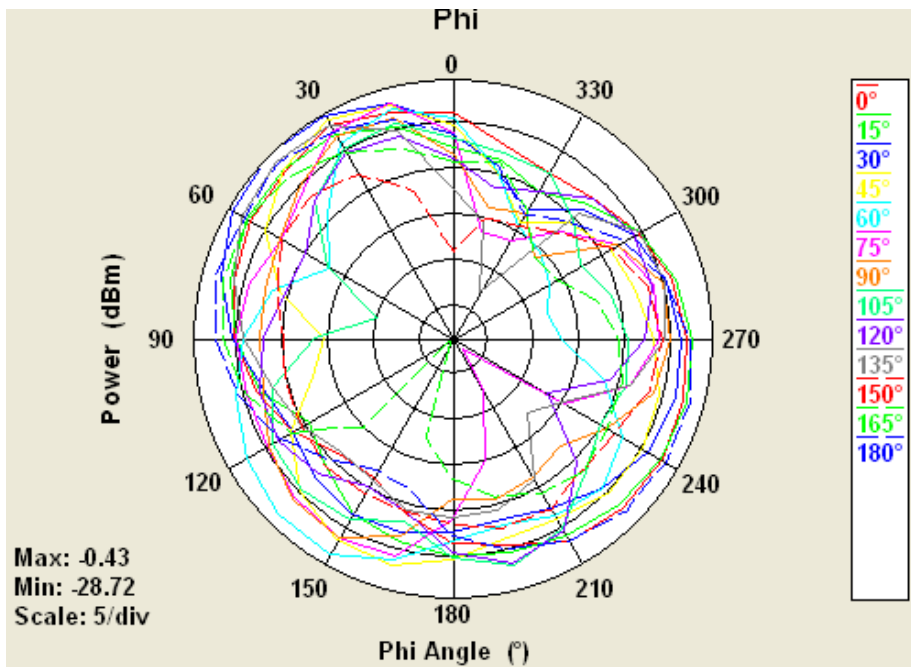
ITEM	SPEC
Model Name	OTE10/2.4GHz/PCB trace Antenna
Center Frequency	2.441GHz
Antenna Gain	0 dBi
Impedance	50 OHM
Antenna Length	24.4 mm
Manufacture	WKK Technology LTD.



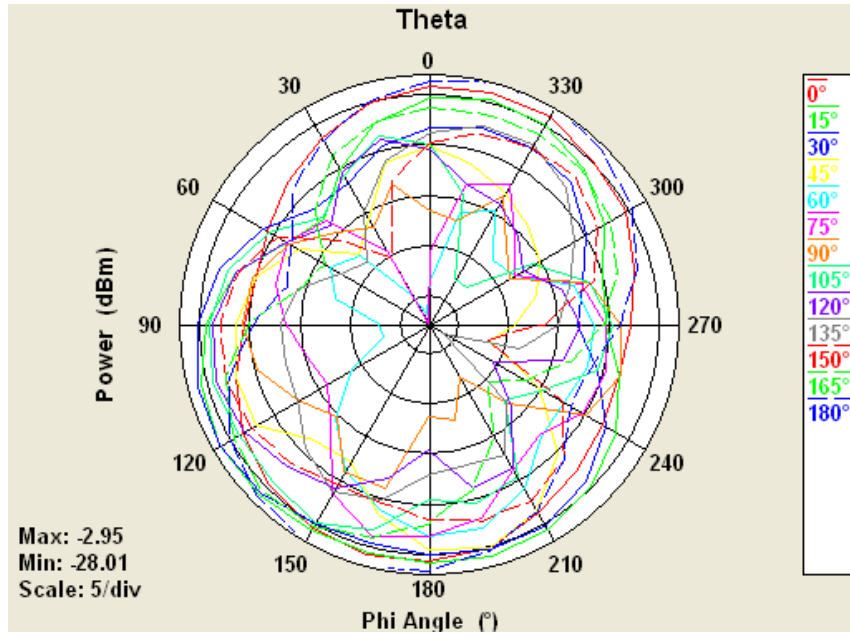
Antenna patterns

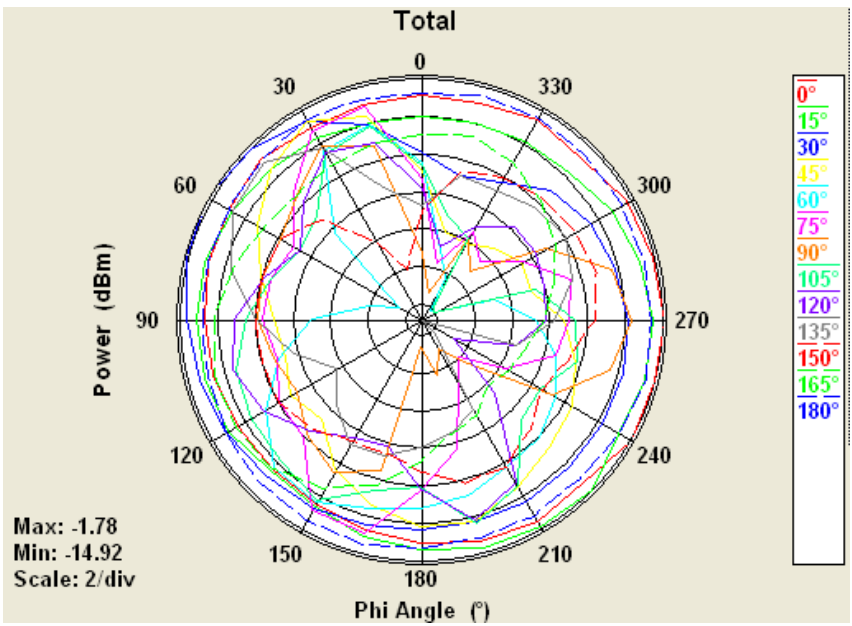
2.402 GHz





2.441GHZ





2.80 GHz

