

NEED MORE HELP?

For all support go to jabra.com/support

The logo features the word "Jabra" in a bold, sans-serif font, followed by "GN" in a smaller font. Below the text is a horizontal line with a series of small dots underneath it.

Jabra GN

GET STARTED

使用手册

EVOLVE2 65

FREE CONCENTRATION MUSIC

[Jabra.com/productivity](https://jabra.com/productivity)

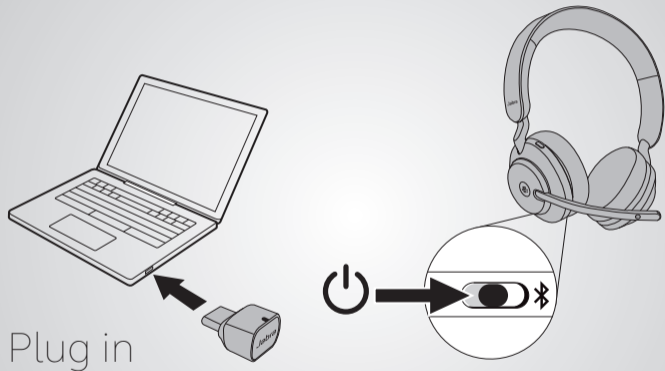
ENGLISH.....	1
简体中文	7



[Jabra.com/manuals](https://www.jabra.com/manuals)

How to connect

PC (Using dongle)



Plug in

The headphones and the USB dongle are pre-paired and ready for use. Plug in the USB dongle and power on the headphones.

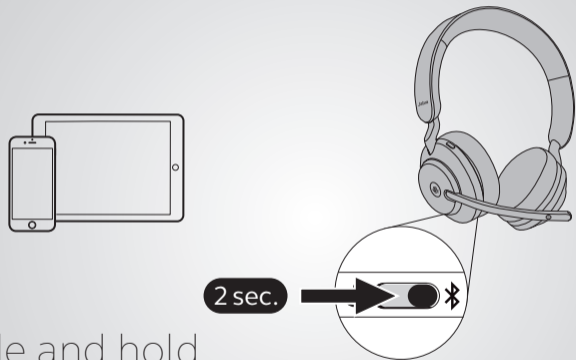
PC (Using USB cable)



Plug in

Plug the headset into USB port on the PC using the supplied USB cable, and ensure the headset is switched on.

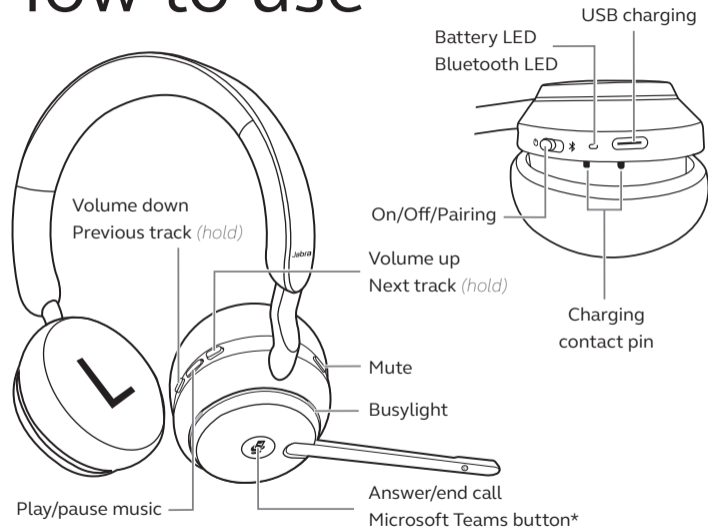
Smartphone



Slide and hold

Turn on Bluetooth pairing on the headphones and follow the voice instructions to pair to your smartphone.

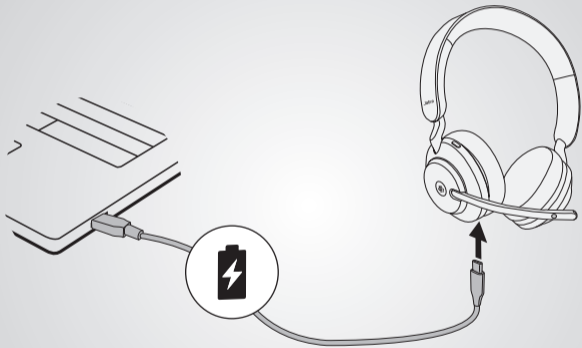
How to use



*Button functionality depends on the Microsoft Teams client

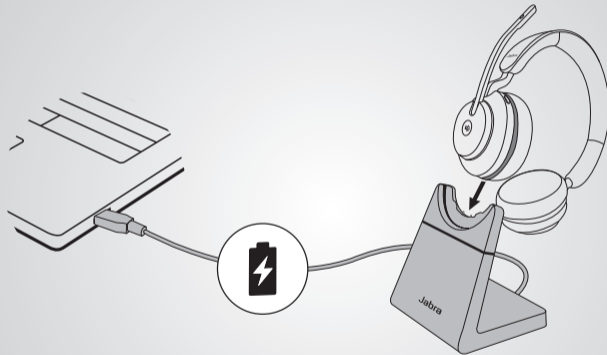
Charging

USB cable



Plug the headphones into a USB port on your PC or wall charger. It takes approx. 1.5 hours to fully charge the headphones.

Charging Stand



© 2019 GN Audio A/S. All rights reserved. Jabra® is a trademark of GN Audio A/S. The Bluetooth® word mark and logos are registered trademarks owned by the Bluetooth SIG, Inc. and any use of such marks by GN Audio A/S is under license.

MADE IN CHINA
MODEL: HSC110W,END050W,DIV020



Declaration of Conformity can be found on
www.jabra.com/doc