

HS850  
Wireless Headset  
with *Bluetooth*<sup>®</sup>  
Technology

DRAFT

# Welcome

---

The Motorola Wireless Headset HS850 makes connectivity invisible and reliable. It is astonishingly advanced and simple to use.

Motorola is actively creating Bluetooth solutions for work, for play, for home, for life-everywhere around the globe.

Thank you for choosing the Motorola Wireless Headset HS850 with *Bluetooth*® technology!

6809489A97-O

# Safety and General Information

---

**IMPORTANT INFORMATION ON SAFE AND EFFICIENT OPERATION. READ THIS INFORMATION BEFORE USING YOUR DEVICE.**

Users are not permitted to make changes or modify the device in any way. Changes or modifications not expressly approved by the party responsible for compliance could void the user's authority to operate the equipment. See 47 CFR Sec. 15.21.

This device complies with part 15 of the FCC Rules. Operation is subject to the

following two conditions: (1) This device may not cause harmful interference, and (2) this device must accept any interference received, including interference that may cause undesired operation. See 47 CFR Sec. 15.19(3).

## Electromagnetic Interference/Compatibility

**Note:** Nearly every electronic device is susceptible to electromagnetic interference (EMI) if inadequately shielded, designed, or otherwise configured for electromagnetic compatibility.

### Facilities

To avoid electromagnetic interference and/or compatibility conflicts, turn off your device in any facility where posted

notices instruct you to do so. Hospitals or health care facilities may be using equipment that is sensitive to external RF energy.

## **Aircraft**

When instructed to do so, turn off your device when on board an aircraft. Any use of a device must be in accordance with applicable regulations per airline crew instructions.

## **Medical Devices**

### **Hearing Aids**

Some devices may interfere with some hearing aids. In the event of such interference, you may want to consult with your hearing aid manufacturer to discuss alternatives.

### **Other Medical Devices**

If you use any other personal medical

device, consult the manufacturer of your device to determine if it is adequately shielded from RF energy. Your physician may be able to assist you in obtaining this information.

## **Industry Canada Notice to Users**

Operation is subject to the following two conditions: (1) This device may not cause interference and (2) This device must accept any interference, including interference that may cause undesired operation of the device Ref IC RSS 210 Sec. 5.11. The term "IC:" before the certification/registration number only signifies that registration was performed based on a Declaration of Conformity indicating that Industry Canada technical specifications were

met. It does not imply that Industry Canada approved the equipment. See Ref IC Self-Marking 6(f) and RSP-100 Sec. 4.

## **FCC Notice to Users**

This equipment has been tested and found to comply with the limits for a Class B digital device, pursuant to part 15 of the FCC Rules. These limits are designed to provide reasonable protection against harmful interference in a residential installation. This equipment generates, uses and can radiate radio frequency energy and, if not installed and used in accordance with the instructions, may cause harmful interference to radio communications. However, there is no guarantee that interference will not occur in a particular installation. If this



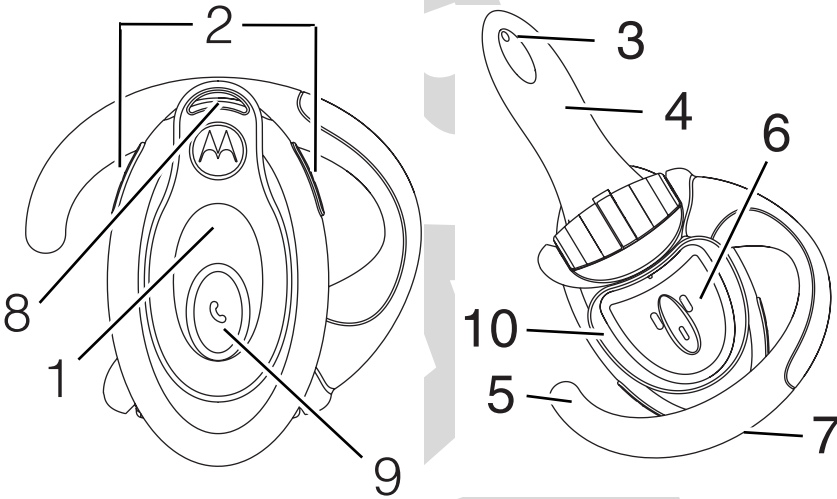
equipment does cause harmful interference to radio or television reception, which can be determined by turning the equipment off and on, the user is encouraged to try to correct the interference by one or more of the following measures:

- Reorient or relocate the receiving antenna.
- Increase the separation between the equipment and the receiver.
- Connect the equipment to an outlet on a circuit different from that to which the receiver is connected.
- Consult the dealer or an experienced radio/TV technician for help.


# Introduction

---

## Headset Features



- 1—Headset Indicator LED** Provides visual cue about headset status.
- 2—Volume Control Buttons** Adjusts speaker (receive) volume up and down.

- 3—Microphone** Picks up your voice input.
- 4—Boom** Contains microphone and controls power (On/Off) status of headset.
- 5—Earhook** Attaches headset to ear.
- 6—Speaker** Plays the sound you receive on the call.
- 7—Charging Port** Receives the plug for your battery charger.
- 8—Lanyard Loop** Lets you attach a lanyard to the headset, so you can wear the headset around your neck and always keep it near.
- 9—Multifunction Button**  Controls several headset functions.
- 10—Removable Speaker Shroud** Helps channel sound to the ear. Shroud may be removed if it causes discomfort.

# Using Your Headset

---

## Charging Your Headset

**First-Time Use**—Before you can use your headset, you need to charge its self-contained battery for two hours.

**Recharging**—When you hear five rapid high tones through the headset speaker, repeated at 20-second intervals, the headset battery needs to be recharged.

Over extended periods of time, batteries gradually wear down and require longer charging times. This is normal. The more you talk on the phone with the

headset, the less standby time your battery has.

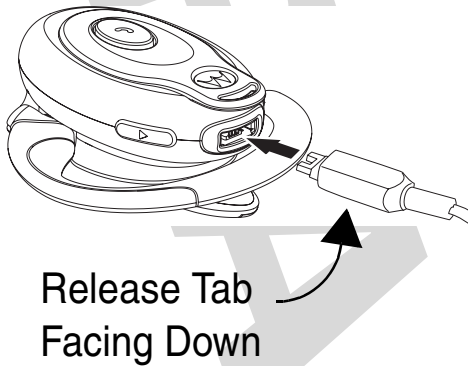


The rechargeable batteries that power this product must be disposed of properly and may need to be recycled. Contact your local recycling center for proper disposal methods. Never dispose of batteries in a fire because they may explode.

# How to Charge

## Step

- 1 Plug the Motorola charger into the headset, with the charger's release tab facing down and the headset facing up.



## Step

- 2 Plug the other end of the charger into an electrical outlet.

While charging, the headset indicator turns on and remains on until charging is complete. The headset will not function while charging. Your headset fully charges in approximately two hours.

---

- 3 When charging is complete (indicators off), remove the charger from the electrical outlet, press the release tab, and detach the charger cord from the headset.
- 
-

**Note:** You can also use a Motorola Original Vehicle Power Adapter to charge the headset while in your vehicle.

A fully charged headset battery provides approximately:

- talk time—8 hours
- standby time (boom open)—200 hours

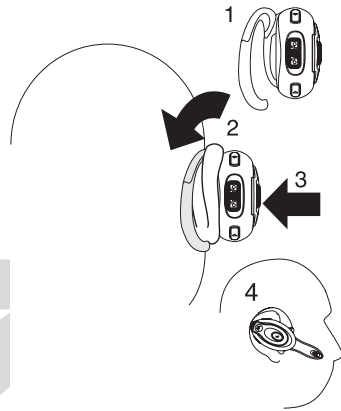


# Wearing the headset

When packaged, the headset is configured for wear on the right ear.

## Step

- 1 Open the boom, then open the earhook (45° from the headset).



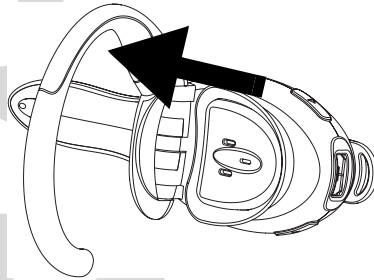
- 
- 2 Loop the earhook over your ear.
- 
- 3 Press the headset to your ear.
- 
- 4 Point the boom toward your mouth.
- 
-

# Wearing on the left ear

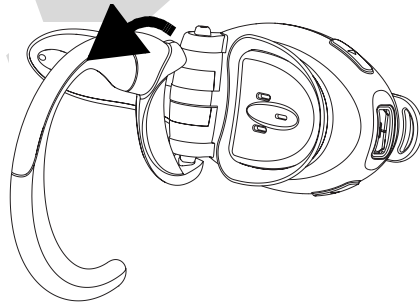
When packaged, the headset is configured for wear on the right ear. To change it for wear on your left ear:

## Step

- 1 Open the boom, then open the earhook (90° from the headset).



- 2 Gently lift and pull the top of the earhook up and off the upper hinge pin. Then pull it away to remove it.



- 3 Flip the headset over.

## Step

4 Hook the bottom of the earhook onto the lower hinge pin, then lift and pull the top of the earhook over the upper hinge pin.

---

5 To change the volume button orientation, see “Controlling Headset Volume” on page 23.

---

---

# Pairing Your Headset and Phone


**Note:** You must pair your headset and phone before you can make a call.

“Pairing” creates a link between devices equipped with *Bluetooth* wireless technology and allows the phone to remember the headset’s unique ID. Once your headset and

phone are paired, your headset automatically connects to your phone any time you open the boom.

## Pairing

With the headset and phone in close proximity:

Step	Result
<b>1</b> Put the headset into pairing mode.	The headset indicator turns on.
<b>a</b> With the headset's boom closed, press and hold the Multifunction Button  until the headset indicator turns on (about 3 seconds).	The indicator remains lit.
<b>b</b> Release the button, then open the headset boom.	

<b>Step</b>	<b>Result</b>
<p><b>2</b> Perform a <i>device discovery</i> from the phone. <i>For details on device discovery for your phone, refer to the user's guide for the phone.</i></p> <hr/>	<p>When the scan is complete, the phone displays the devices found.</p>
<p><b>3</b> Select the Motorola HS850 from the discovered devices list and confirm following the on screen prompts.</p> <hr/>	

<b>Step</b>	<b>Result</b>
4 When prompted by the phone, enter the passkey 0000 and confirm to pair the headset with the phone.	The device ID is now stored in the phone's memory.  Pairing is successful when the headset indicator flashes 10 times rapidly.

---

---

## Link to Additional Devices

Your headset can store pairing information for up to eight different devices equipped with *Bluetooth* wireless technology. Devices are stored in a "Paired Device List" in memory in chronological order. When an attempt to

pair to more than eight devices is made, the oldest paired device is removed from the list.

Any of the eight paired devices can initiate a paired connection to the headset.

The headset will only automatically initiate a paired connection (via opening the boom) with the **last** device it was **connected to**. If you want to connect the headset to another device in the paired device list, you must initiate the connection from that device. Whichever of the eight devices initiates a connection to the headset afterwards, that device then becomes the “last connected” device.



# Controlling Headset Volume

## Increasing and Decreasing Volume


To increase speaker volume, press the top volume button repeatedly until you reach the desired volume level.

To decrease speaker volume, press the bottom volume button repeatedly until you reach the desired volume level.

# Volume Orientation

To change the volume button orientation for left or right ear:

## Step

- 1** With the headset's boom closed, press and hold the Multifunction  button until the headset indicator turns on (about 3 seconds).

---

  - 2** Press the volume button that you want to use as the volume up. The headset indicator will flash several times to indicate success.
- 
- 

Repeat the above steps anytime to change the volume button orientation.

# Making and Receiving Calls

Your headset supports both Hands Free and Headset Profiles. Accessing call functions depends on which profile your phone supports.

**Note:** Some phones do not support all features listed. Please consult your phone user's guide.

You can activate call functions for both according to the following table:

<b>Device Status</b>		<b>Action</b>
<b>Phone</b>	<b>Headset</b>	<b>Hands Free Profile</b>
Enter Pairing (Configuration) Mode:		
On	Off (boom closed)	Press & hold ☹ until LED remains lit. Release ☹, open boom.
Make a Voice Dial Call:		
On in idle	On	Short press ☹, speak name, phone dials call
Dial a Number:		
On—user dials number	On	N/A
Redial a Number:		

Device Status		Action
Phone	Headset	Hands Free Profile
On–Voice dialing turned on or off	On–(Idle)	Long press ☺
End a Call:		
On–in call	On	Short press ☺

Device Status		Action
Phone	Headset	Hands Free Profile
Put Active Call On Hold:		
On–in call	On	Long press ☺
Receive a Call:		
On–phone rings	On	Short press ☺ (call is answered)

Device Status		Action
Phone	Headset	Hands Free Profile
Reject a Call:		
On-phone rings	On	Long press ☹
Answer 2nd incoming call:		
On-in call, 2nd call coming in	On	Long press ☹, places 1st call on hold, answers incoming call
Toggle between two active calls:		
On-in call, 2nd call on hold	On	Long press ☹
Transfer call from phone to Headset:		
On-in call	On	Short press ☹, (call transferred to headset)

**Note:** If the link is abnormally disconnected (e.g., out of range) the headset tries to reestablish the link.

## ***Headset Indicators***

With charger plugged in:

<b>Headset Indicator</b>	<b>Headset</b>
ON	charging in progress
OFF	charging complete

With no charger attached:

<b>Headset Indicator</b>	<b>Headset</b>
OFF	power off
ON (steady)	pairing mode

## Headset Indicator

## Headset

10 rapid flashes

pairing successful

---

flashes at a  
3-second interval  
(.1 seconds ON  
2.9 seconds OFF)

standby (not on a  
call)

---

pulses at an  
8-second interval  
(2.0 seconds ON,  
6.0 seconds OFF)

connected (on a  
call)

---

---

**Note:** When the wireless headset is paired to the phone and there is no activity for 5 minutes, the blue flashing LED turns off. Any button press on the headset will reawaken the headset and the flashing resumes. If you press the up and down volume buttons simultaneously during a call, the pulsing



LED turns off for the duration of that call.

## Audio Tones

<b>Audio Tone</b>	<b>Headset Status</b>
single high tone when pressing volume button	volume maximum or minimum reached
five rapid high tones, repeated every 20 seconds	low battery
no audio indications; deteriorating audio quality	out of range
series of 4 tones, low to high	audio link open (Headset mode), active call (Hands Free mode)

<b>Audio Tone</b>	<b>Headset Status</b>
ring tone	incoming call
single high tone	pairing confirmation
single low tone	initiate voice activation
dual high/low tone	voice tag not recognized
single high tone	end call
series of 4 tones, high to low	audio link closed (Headset mode), call ended (Hands Free mode)
fast high/low tone every 5 seconds (max. & min. volume confirm beep)	no network/service

## Audio Tone

## Headset Status

no tone

power ON/OFF

---

DRAFT