



MOTOROLA

HS820
Wireless Headset
with *Bluetooth*[®]
Technology

START HERE >

Welcome

The Motorola Wireless Headset HS820 with *Bluetooth*® technology defies traditional expectations. This latest product by Motorola makes connectivity invisible and reliable. It is astonishingly advanced, yet intuitive and simple to use. It is decidedly smaller than its predecessors, yet more eye-catching than ever. And although you are no longer connected by wires, you are intrinsically connected to a growing group of leading-edge technology pioneers who are embracing the global *Bluetooth* movement.

Innovation is a recognized part of Motorola's 75-year heritage. A company that understands the way the world is moving...and then jumps in to intelligently shape its direction. Motorola consumer products with *Bluetooth* wireless technology are challenging the expected and defying the traditional rules. Connectivity is bringing us together—need it be hampered by wires? Technology is making life more integrated—must it be complicated?

Motorola is actively creating *Bluetooth* solutions for work, for play, for home, for life—everywhere around the globe. Welcome to the movement. And thank you for choosing the Motorola Wireless Headset HS820!

Contents

Safety and General Information	3
Introduction	6
What Is Bluetooth Wireless Technology?	6
How Can I Use My Wireless Headset?	6
Headset Features	7
Using Your Headset	8
Charging Your Headset Battery	8
Wearing Your Headset	10
Pairing Your Headset and Phone	12
Adjusting Headset Volume	13
Making and Receiving Calls	14
Using Your Headset Indicator LED	16

Safety and General Information

IMPORTANT INFORMATION ON SAFE AND EFFICIENT OPERATION. READ THIS INFORMATION BEFORE USING YOUR DEVICE.

Users are not permitted to make changes or modify the device in any way. Changes or modifications not expressly approved by the party responsible for compliance could void the user's authority to operate the equipment. See 47 CFR Sec. 15.21.

This device complies with part 15 of the FCC Rules. Operation is subject to the following two conditions: (1) This device may not cause harmful interference, and (2) this device must accept any interference received, including interference that may cause undesired operation. See 47 CFR Sec. 15.19(3).

Electromagnetic Interference/Compatibility

Note: Nearly every electronic device is susceptible to electromagnetic interference (EMI) if inadequately shielded, designed, or otherwise configured for electromagnetic compatibility.

Facilities

To avoid electromagnetic interference and/or compatibility conflicts, turn off your device in any facility where posted notices instruct you to do so. Hospitals or health care facilities

may be using equipment that is sensitive to external RF energy.

Aircraft

When instructed to do so, turn off your device when on board an aircraft. Any use of a device must be in accordance with applicable regulations per airline crew instructions.

Medical Devices

Hearing Aids

Some devices may interfere with some hearing aids. In the event of such interference, you may want to consult with your hearing aid manufacturer to discuss alternatives.

Other Medical Devices

If you use any other personal medical device, consult the manufacturer of your device to determine if it is adequately shielded from RF energy. Your physician may be able to assist you in obtaining this information.

Industry Canada Notice to Users

Operation is subject to the following two conditions: (1) This device may not cause interference and (2) This device must accept any interference, including interference that may cause undesired operation of the device Ref IC RSS 210 Sec. 5.11. The term "IC:" before the certification/registration number only signifies that registration was performed based on a Declaration of Conformity indicating that Industry Canada technical specifications were met. It does not imply that Industry Canada approved the equipment. See Ref IC Self-Marking 6(f) and RSP-100 Sec. 4.

FCC Notice to Users

This equipment has been tested and found to comply with the limits for a Class B digital device, pursuant to part 15 of the FCC Rules. These limits are designed to provide reasonable protection against harmful interference in a residential installation. This equipment generates, uses and can radiate radio frequency energy and, if not installed and used in accordance with the instructions, may cause harmful interference to radio communications. However, there is no guarantee that interference will not occur in a particular installation. If this equipment does cause harmful interference to radio or television reception, which can be determined by turning the equipment off and on, the user is encouraged to try to correct the interference by one or more of the following measures:

- Reorient or relocate the receiving antenna.
- Increase the separation between the equipment and the receiver.
- Connect the equipment to an outlet on a circuit different from that to which the receiver is connected.
- Consult the dealer or an experienced radio/TV technician for help.

Introduction

What Is Bluetooth Wireless Technology?

Bluetooth devices communicate without wires, using built-in radio transceivers that operate on a globally available radio frequency to ensure worldwide compatibility. Your *Bluetooth* Wireless Headset can communicate with other *Bluetooth* devices within a range of approximately 10 meters (33 feet).

How Can I Use My Wireless Headset?

Your Wireless Headset, with *Bluetooth* technology, lets you connect with other similarly equipped devices such as a **Motorola V600 with integrated *Bluetooth* technology.**

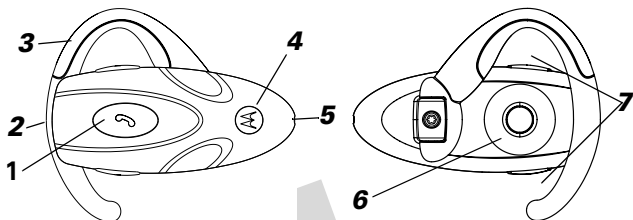
- Use your phone hands free.
- Handle incoming and outgoing calls with the headset multifunction control button (MFB).
- Use voice activation to make calls.

Note: The HS820 supports both Headset and Hands Free *Bluetooth* Profiles for increased functionality and compatibility with more products. Consult your user's guide for more information.

Headset Features

Headset (Top View)

Headset (Bottom View)



1 Multifunction Button—Controls multiple headset functions.

2 Charging Port—Accepts the plug for your handset battery charger.

3 Earhook—Attaches headset to ear.

4 Headset Indicator LED—Provides a visual cue about headset status.

5 Microphone—Picks up your voice input.

6 Speaker—Plays the sound you receive on the call.

7 Volume Control Buttons—Adjusts speaker volume up or down.

Using Your Headset

Charging Your Headset Battery

When to Charge

First-Time Use—Before you can use your headset, charge its self-contained battery for two hours.

Recharging—When you hear five rapid high tones through the headset speaker, repeated at 20-second intervals, the headset battery needs recharging.

Over extended periods of time, batteries gradually wear down and require longer charging times. This is normal. Additionally, your battery will have less standby time the more you talk on the phone with your headset.



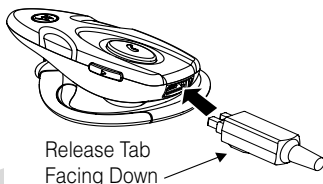
The rechargeable batteries that power your wireless headset must be disposed of properly and may need to be recycled. Contact your local recycling center for proper disposal methods.

Warning: Never dispose of batteries in a fire because they may explode.

How to Charge

Step

- 1 Plug the Motorola charger into the headset, with the charger's release tab facing down and the headset facing up.



- 2 Plug the other end of the charger into an electrical outlet.

During charging, the headset indicator turns on and remains on until charging completes. The headset will not work while charging. Your headset fully charges in approximately two hours .

- 3 When charging completes (indicator off), remove the charger from the electrical outlet, press the release tab, and detach the charger from the headset.

Note: You can also use a Motorola Original Vehicle Power Adapter to charge the headset battery while in your vehicle.

A fully charged headset battery provides approximately:

- 6 hours talk time
- 100 hours standby time

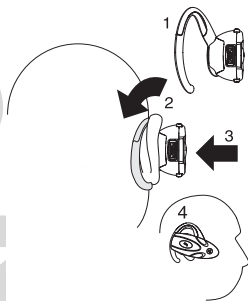
Wearing Your Headset

Placing the Headset on Your Ear

When packaged, the headset is originally set up to wear on the right ear. To place the headset on your ear:

Step

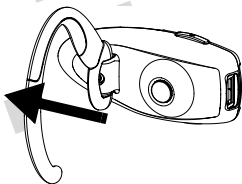
- 1 Open the earhook (45° from the headset).
- 2 Loop the earhook over your ear.
- 3 Press the headset to your ear.
- 4 Point the microphone toward your mouth.



Changing for Wear on the Left Ear

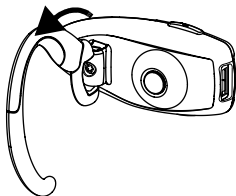
Step

- 1 Open the earhook (90° from the headset).



Step

- 2 Gently lift and pull the top of the earhook up and off the upper hinge pin. Then pull it away to remove it.



-
- 3 Flip the headset over.
 - 4 Hook the bottom of the earhook onto the lower hinge pin, then lift and pull the top of the earhook over the upper hinge pin.
-
- 5 To change the volume button orientation, see “Adjusting Headset Volume” on page 15.
-
-

Pairing Your Headset and Phone

Note: You must pair your headset and phone before you can make a call.

“Pairing” creates a link between devices with *Bluetooth* wireless technology, and allows the phone to remember the headset’s unique ID. When your headset and phone are paired, your headset automatically connects to your phone.

Pairing

With the headset and phone close together:

Action

- 1 With the headset off, hold the Multifunction Button until the LED remains on (about 3 seconds).

- 2 Perform a *device discovery* from the phone. *For details on device discovery for your phone, refer to the phone’s user’s guide.*

When the scan is complete, the phone displays the devices found.

- 3 Select the Motorola HS820 from the discovered devices list and confirm following the on screen prompts.

- | | | |
|---|---|---|
| 4 | When prompted by the phone, enter the passkey 0000 and confirm to pair the headset with the phone. | The device ID is now stored in the phone’s memory. |
| | | Pairing is successful when the headset indicator flashes rapidly. |

Pairing to Additional Devices

Your headset can store pairing information for up to eight different devices with *Bluetooth* wireless technology. Devices are stored in a “Paired Device List” in memory in the order entered. When an attempt to pair to more than eight devices is made, the oldest paired device is removed from the list.

Any of the eight paired devices can initiate a connection to the headset.

The headset will only automatically initiate a connection (upon power-up) with the ***last*** device it was ***connected to***. If you want to connect the headset to another device in the paired device list, you must initiate the connection from that device. Whichever of the eight devices initiates a connection to the headset afterwards, that device then becomes the “last connected” device.

Adjusting Headset Volume

Increasing or Decreasing Volume

To increase speaker volume, press the top volume button repeatedly until you reach the desired volume level.

To decrease speaker volume, press the bottom volume button repeatedly until you reach the desired volume level.

Volume Orientation Technology

To change the volume button orientation for left or right ear:

Action

With the headset off, press the Multifunction button and desired volume button to assign as "volume up" until the LED flashes 2 times and the headset powers up.

Making and Receiving Calls

Your headset supports both Handsfree and Headset Profiles. Accessing call functions depends on which profile your phone supports.

Note: Some phones do not support all features listed. See your phone's user's guide.

You can activate call functions for the Handsfree profile according to the following table:

Function	Device Status		Action
	Phone	Headset	Handsfree Profile
Enter Pairing (Configuration) Mode	On	Off	Press & hold MFB until LED remains lit. Headset can be discovered by another Bluetooth device.
Make a Voice Dial Call	On in idle	On	Short press MFB, speak name, phone dials call

Function	Device Status		Action
	Phone	Headset	Handsfree Profile
Redial a Number	On—voice dialing turned on or off	On—(Idle)	Long press MFB
End a Call	On—in call	On	Short press MFB

Function	Device Status		Action
	Phone	Headset	Handsfree Profile
Put Active Call On Hold	On—in call	On	Long press MFB
Receive a Call	On—phone rings	On	Short press MFB(call is answered)
Reject a Call	On—phone rings	On	Long press MFB
Answer 2nd Incoming call	On—in call, 2nd call coming in	On	Long press MFB, places 1st call on hold, answers incoming call
Toggle between Two Active Calls	On—in call, 2nd call on hold	On	Long press MFB
Transfer Call From Phone to Headset	On—in call	On	Short press MFB, (call transferred to headset)

Note: If the link abnormally disconnects (for example, out of range) the headset tries to reestablish the link.

Using Your Headset Indicator LED

With charger plugged in:

Headset Indicator	Status
ON	charging in progress
OFF	charging complete

With no charger plugged in:

Headset Indicator	Status
OFF	power off
ON (steady)	pairing mode
10 rapid flashes	pairing successful
Flashes at a 3-second interval (.1 seconds ON 2.9 seconds OFF)	standby (not on a call)
Pulses at an 8-second interval (2.0 seconds ON, 6.0 seconds OFF)	connected (on a call)

Note: When the wireless headset is paired to the phone and there is no activity for 5 minutes, the blue flashing LED turns off. Any button press on the headset, resets the timer, and the

flashing resumes. If you press the up and down volume buttons at the same time during a call, the pulsing LED turns off for the duration of that call.

Audio Tones

Audio Tone	Headset Status
Single high tone when pressing volume button	volume maximum or minimum reached
Five rapid high tones, repeated every 20 seconds	low battery
No audio indications; deteriorating audio quality	out of range
Series of 4 tones, low to high	audio link open (Headset mode), active call (hands free mode)
Ring tone	incoming call
Single high tone	pairing confirmation
Single low tone	initiate voice activation
Dual high/low tone	voice tag not recognized
Single high tone	end call
Series of 4 tones, high to low	audio link closed (Headset mode), call ended (hands free mode)
Fast high/low tone every 5 seconds (max. & min. volume confirm beep)	no network/service
No tone	power ON/OFF

DRAFT

motorola.com

../Graphics/031317o.eps 1, 1
../Graphics/031318o.eps 1, 1
../Graphics/040056o.eps 7
../Graphics 040057o.eps 9
../Graphics/040058o.eps 10
../Graphics/040059o.eps 11
../Graphics/040060o.eps 7
../Graphics/040067o.eps 10
../graphics/recycle.eps 8
BarcodeThreeOfNine @ 14.0 pt 1
DinarProportional7 Latin @ 9.5 pt 12
Helvetica @ 10.0 pt 1, 1–18
Helvetica @ 11.0 pt 3–4
Helvetica @ 12.0 pt 10
Helvetica @ 12.5 pt 3–5, 8–10, 12–14, 17
Helvetica @ 7.0 pt 2
Helvetica @ 80.0 pt 1–18
Helvetica @ 9.0 pt 9, 14–15
Helvetica-Black @ 15.0 pt 6–8, 10, 13–14, 16
Helvetica-Black @ 20.0 pt 1–3, 6, 8
T720 @ 9.0 pt 14–15
Times @ 12.0 pt 14
Times New Roman @ 12.0 pt 7, 1–2
Univers 45 Light @ 10.0 pt 7
Univers 45 Light @ 13.0 pt 14
Univers 47 CondensedLight @ 9.0 pt 14–15
Univers 55 @ 10.0 pt 7

Univers 55 @ 10.347 pt 7

Univers 55 @ 14.0 pt 12

Univers 55 @ 18.0 pt 1

Univers 55 @ 8.5 pt 2

Univers 57 Condensed @ 34.0 pt 1, 1