

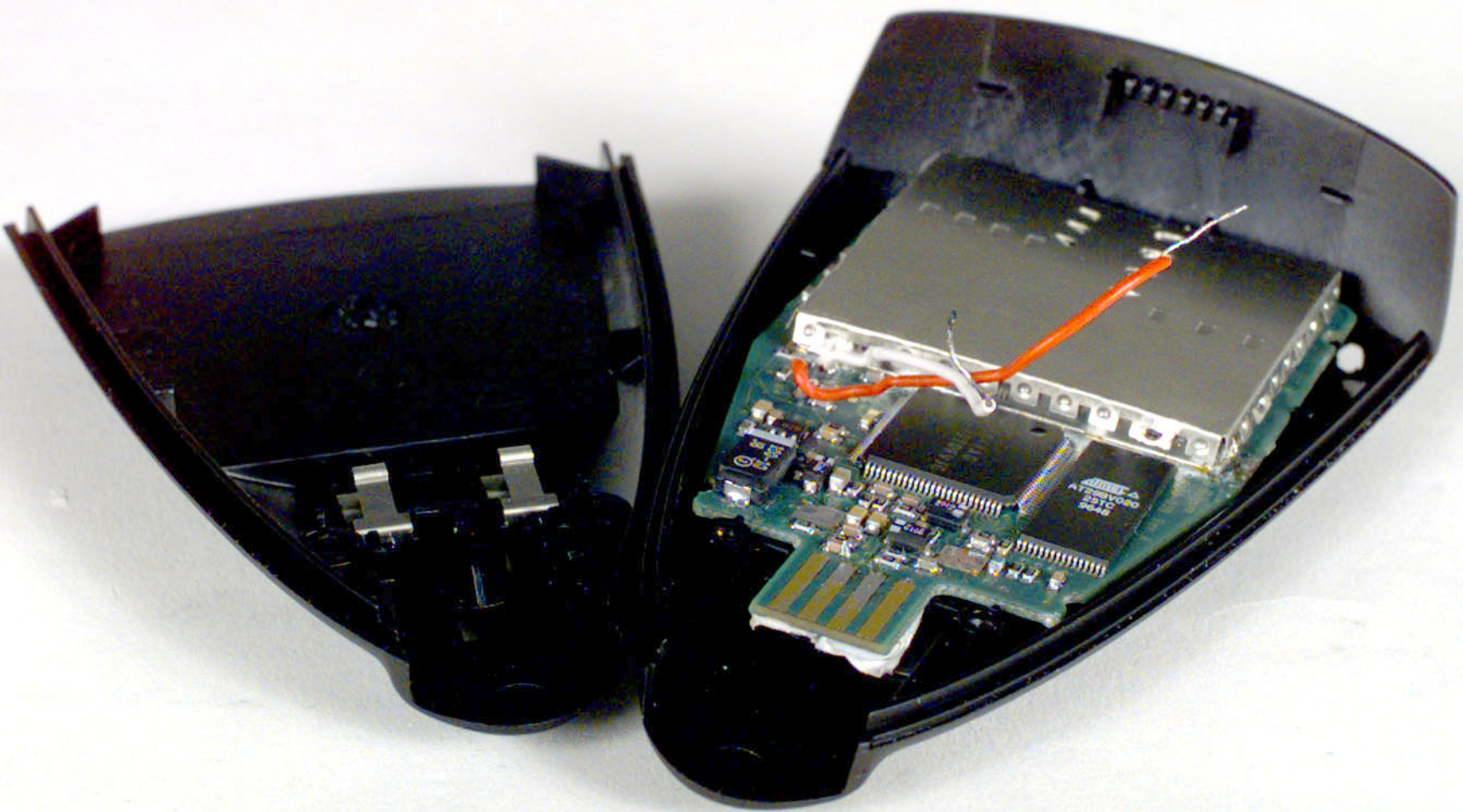


8R01318
ITEM# 9
MAR/01/99

8R01318
ITEM# 9
MAR/01/99



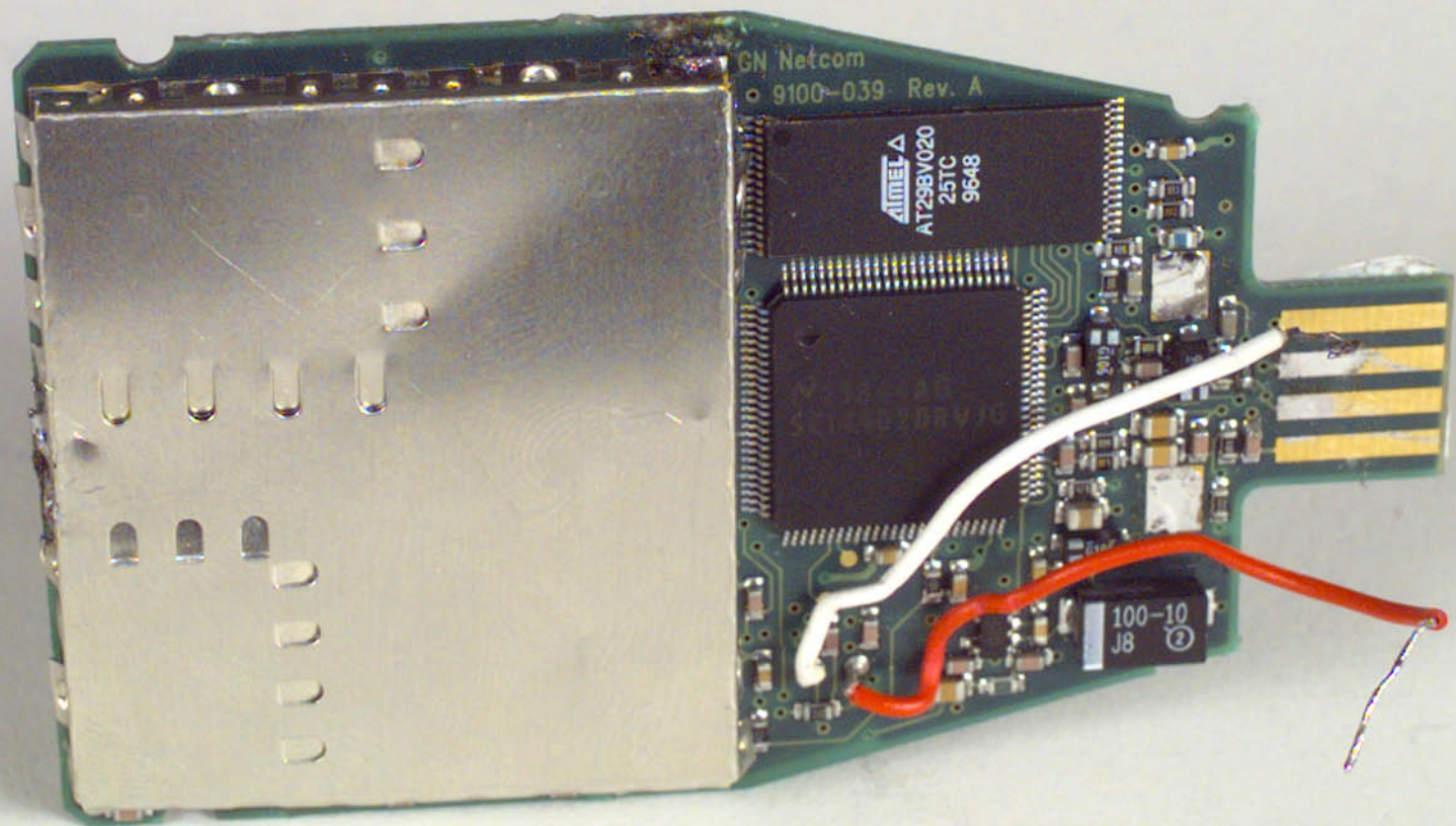
8R01318
ITEM# 9
MAR/01/99





GN^{Net.com}

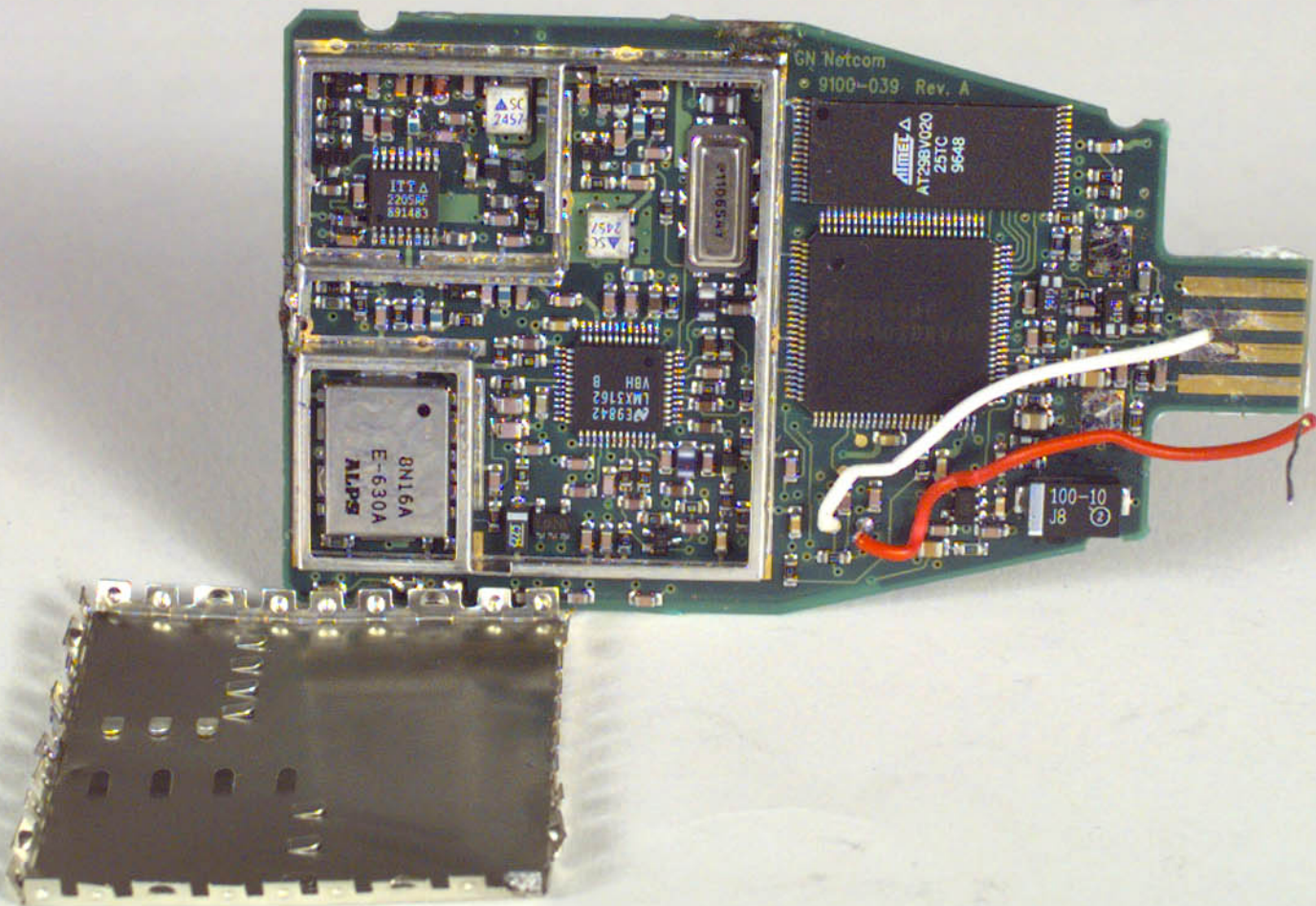
NIMH RECHARGEABLE BATTERY.
USE SPECIFIED CHARGER ONLY.
DO NOT SHORT CIRCUIT.
MUST BE RECYCLED OR
DISPOSED OF PROPERLY.
MAY EXPLODE IF
DISPOSED OF IN FIRE.
TYPE:2901-009



GM Netcom
9100-039 Rev. A

AMTEL
AT29BV020
25TC
9648

100-10
J8



GN Netcom
9100-039 Rev. A

AT29BV020
25TC
9648

ITTA
2205AF
891483

SC
2457

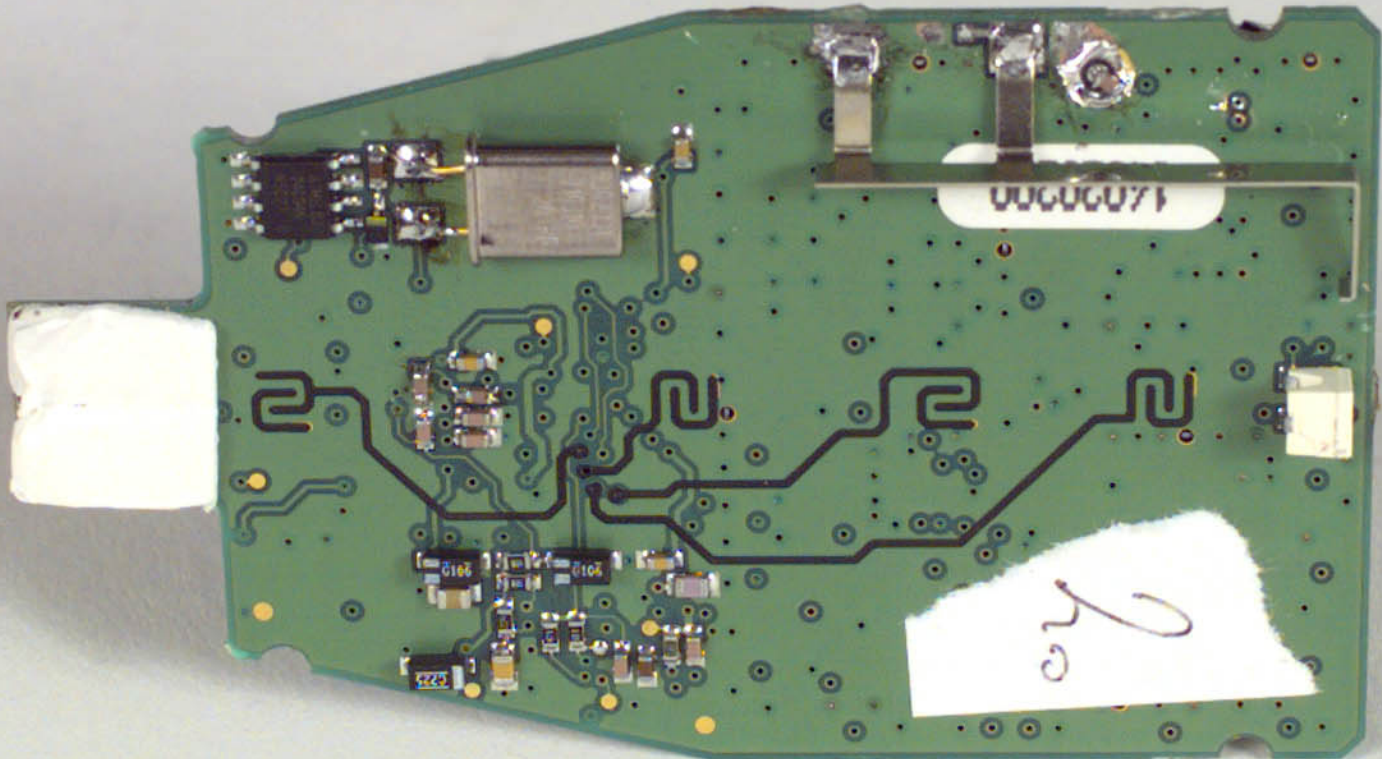
AT106551

8N16A
E-630A
ALPS

LM33162
YBH
B

SC
2457

100-10
J8



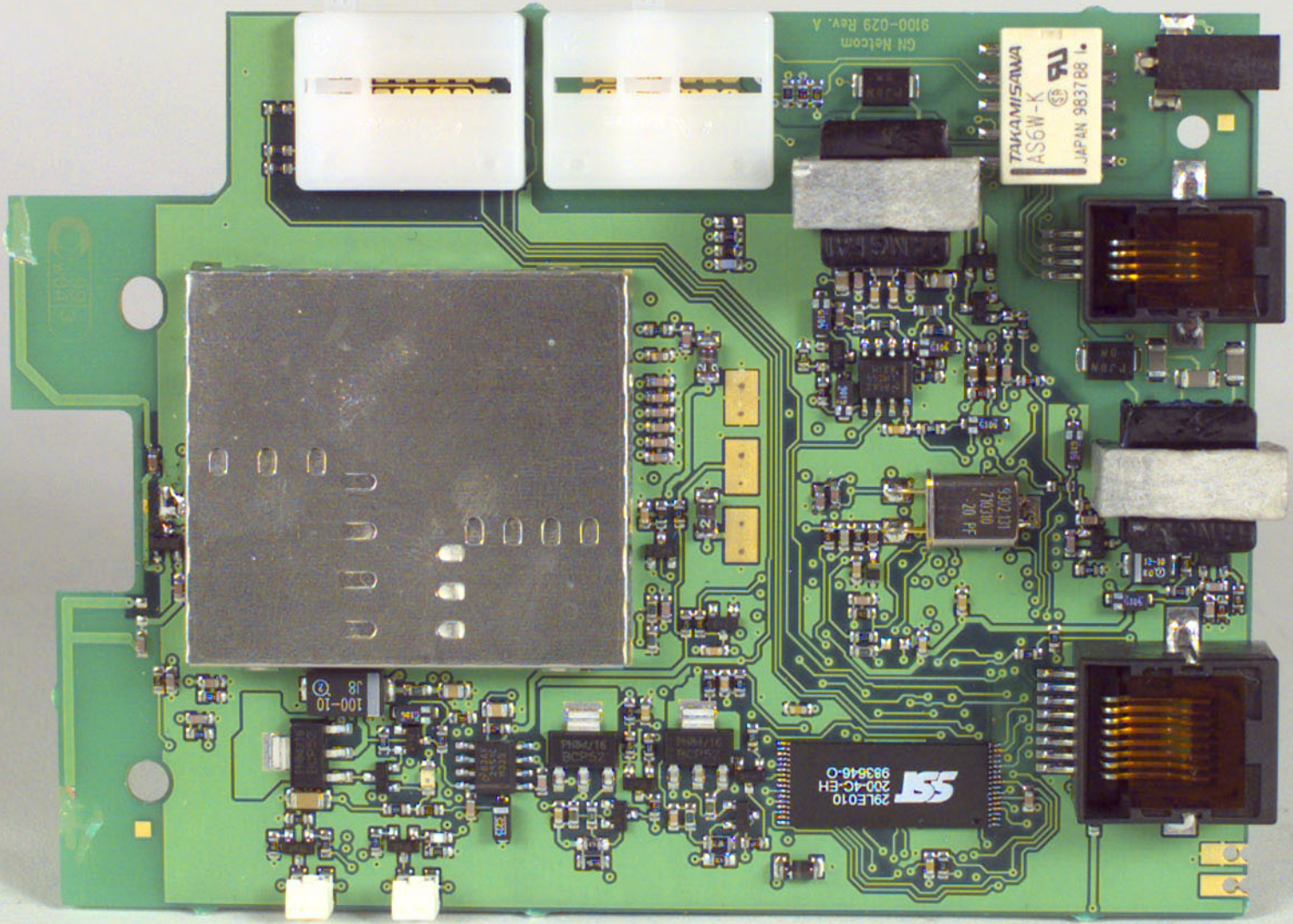
1700000

20



8R01318
ITEM# 18
MAR/01/99





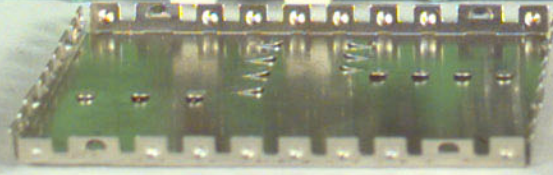
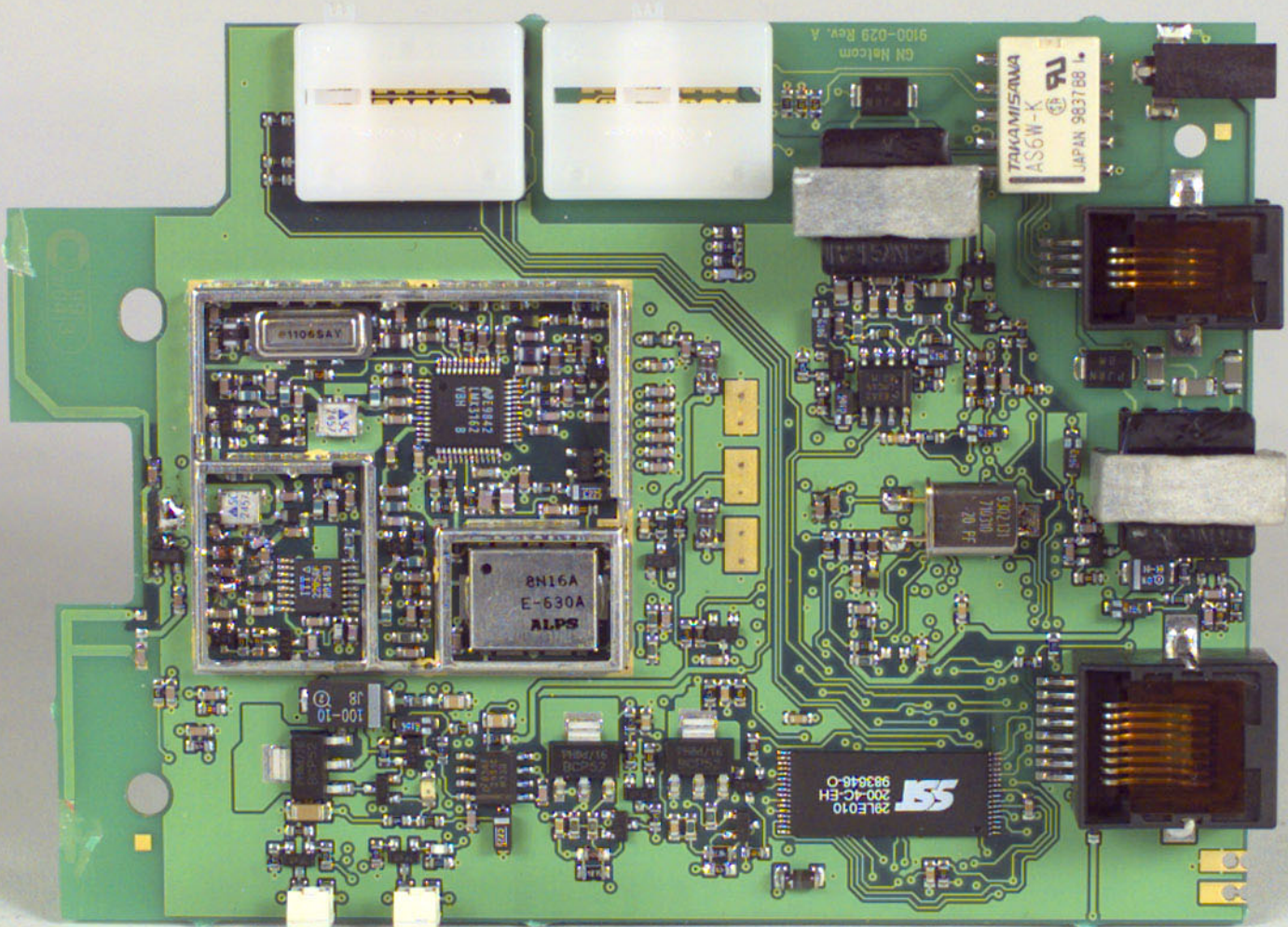
GN Netcom
9100-029 Rev. A

TAKAMISAWA
AS6W-K
JAPAN 9837 B8

9302310
70030
20 PF

29LE010
200-4C-EH
983846-0

9100-029



GN Helcom
9100-029 Rev. A

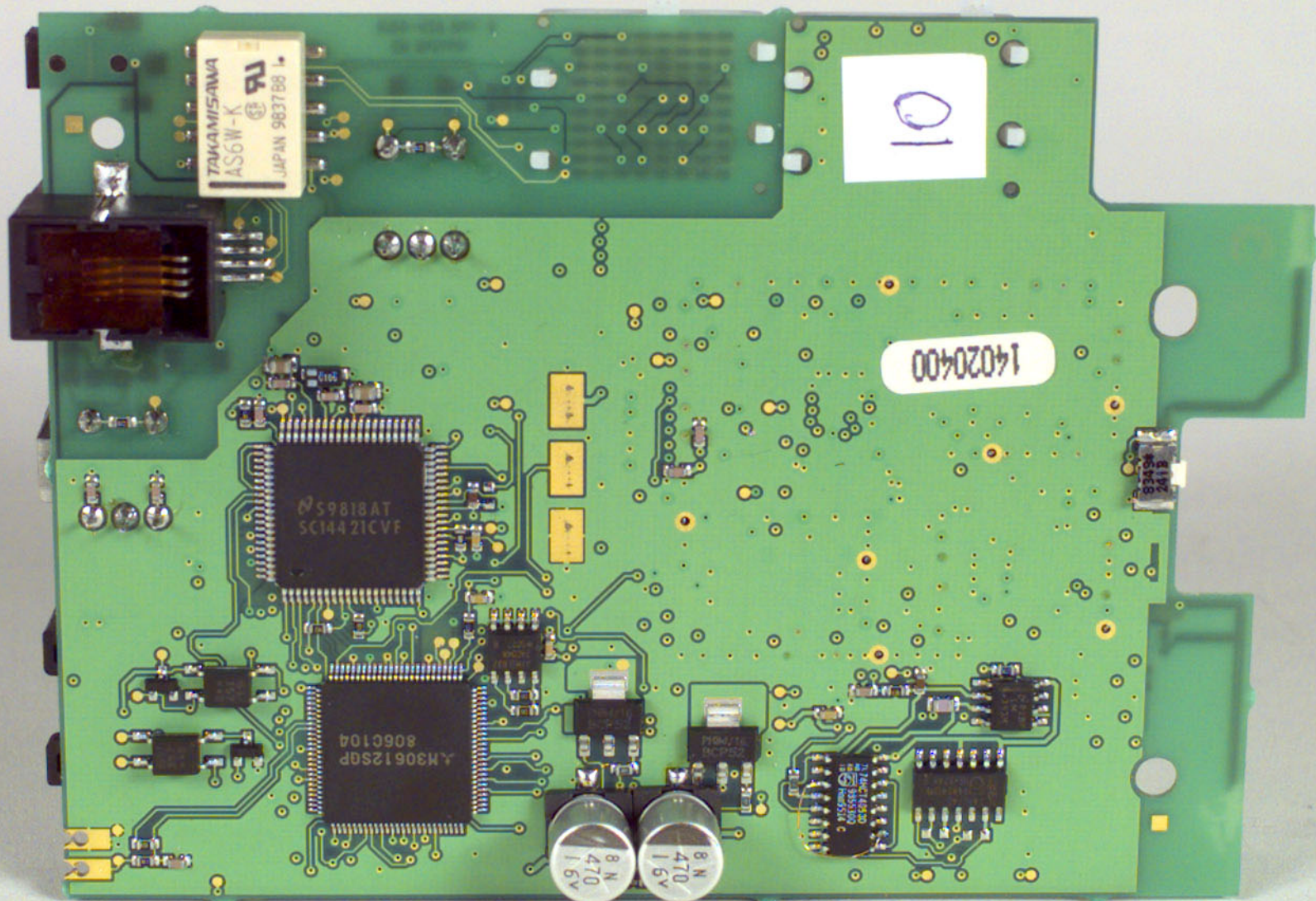
TAKAMISAWA
AS6W-K
JAPAN 983788

11065AY

8N16A
E-630A
ALPS

11065AY

29LE010
200-AC-EH
983848-0



TAKAMISAWA
AS6W-K
JAPAN 9B3TB8

10

14020400

S9818AT
SC14421CVF

LM30612SP
806C104

8N
470
1.5V

8N
470
1.5V

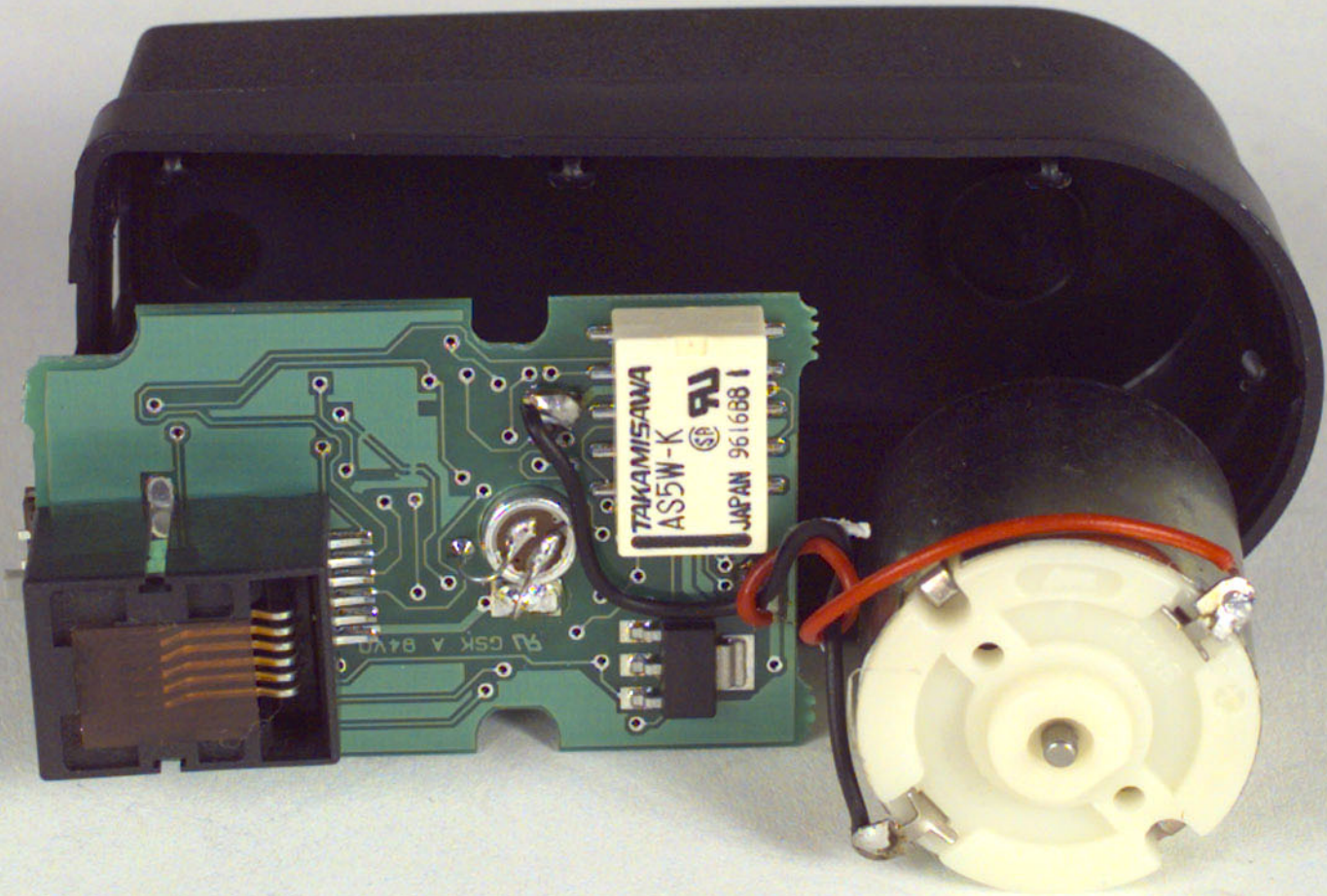
20080500
00000000

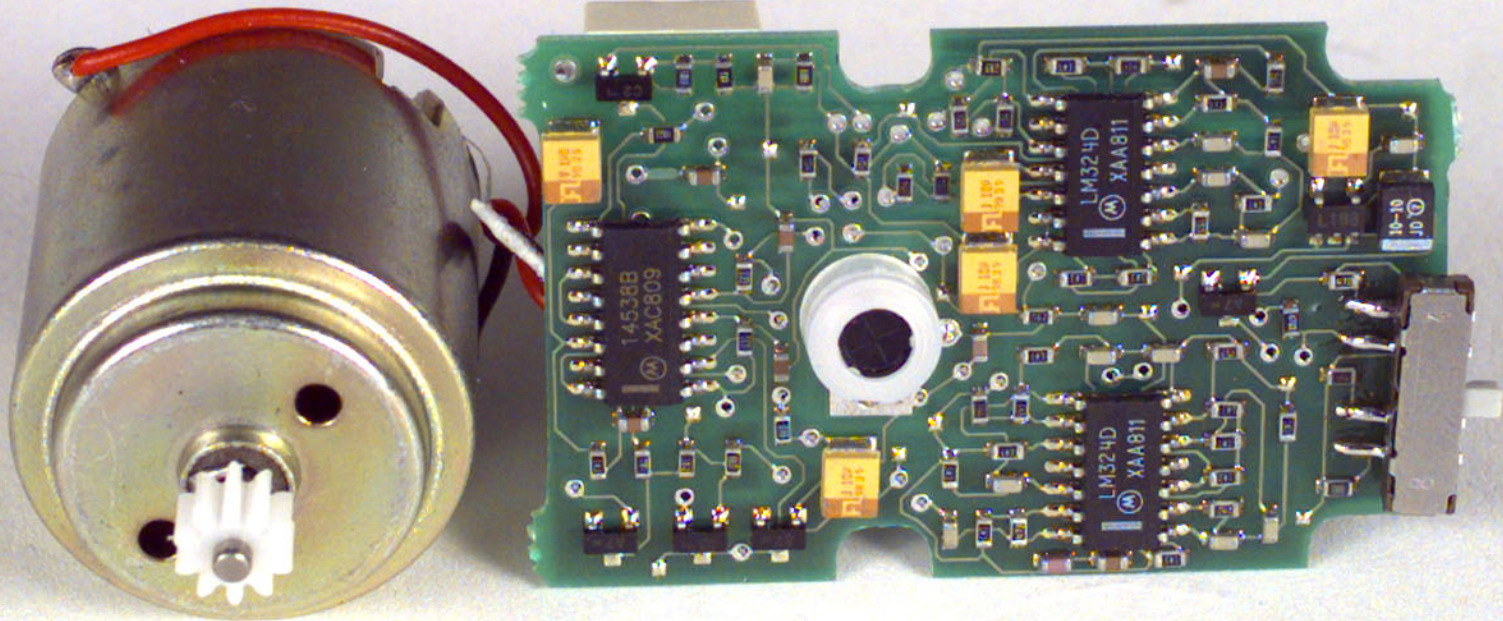
LA54116530
00355500
REMS214



8R01318
ITEM# 22
MAR01/99

1
2
3





SR01318
ITEM# 26
MAR/01/99



FOR USE WITH
TELECOMMUNICATIONS
EQUIPMENT

CAUTION
HOT SURFACE

