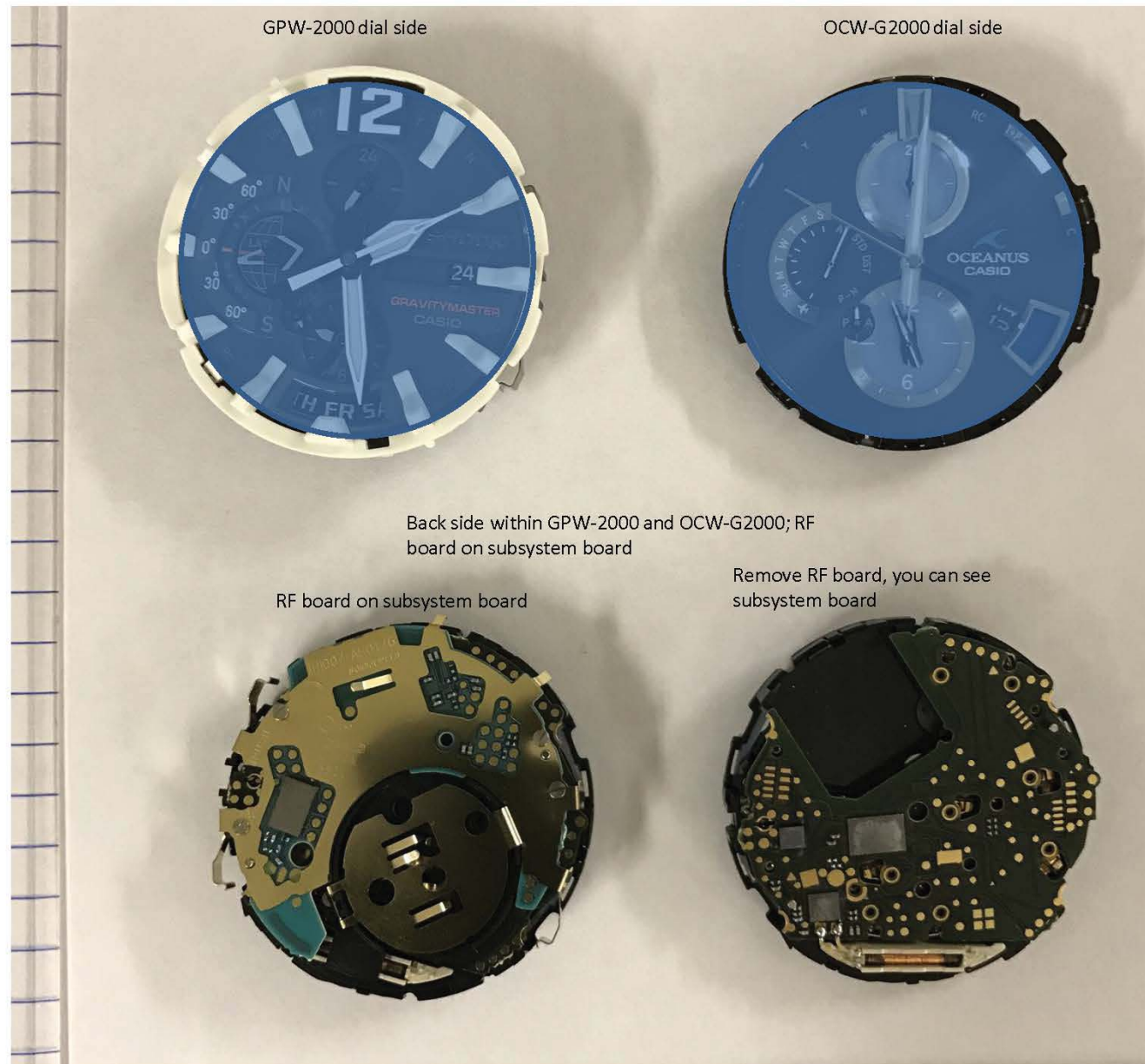
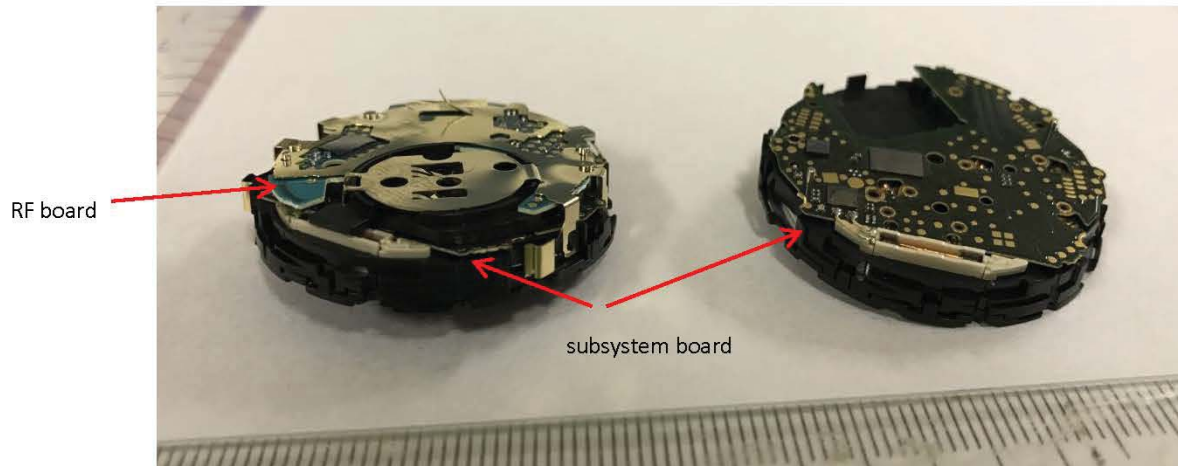


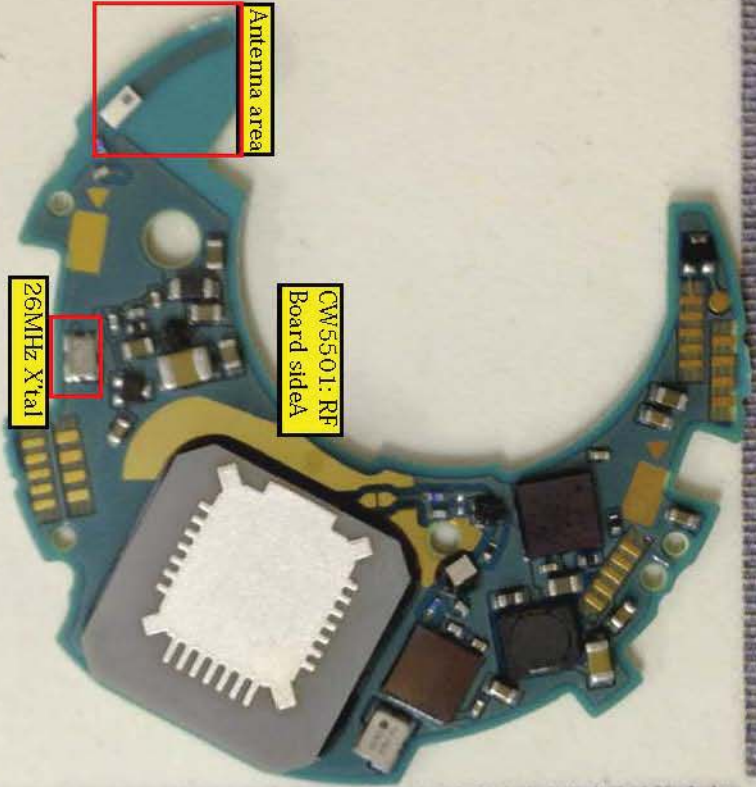
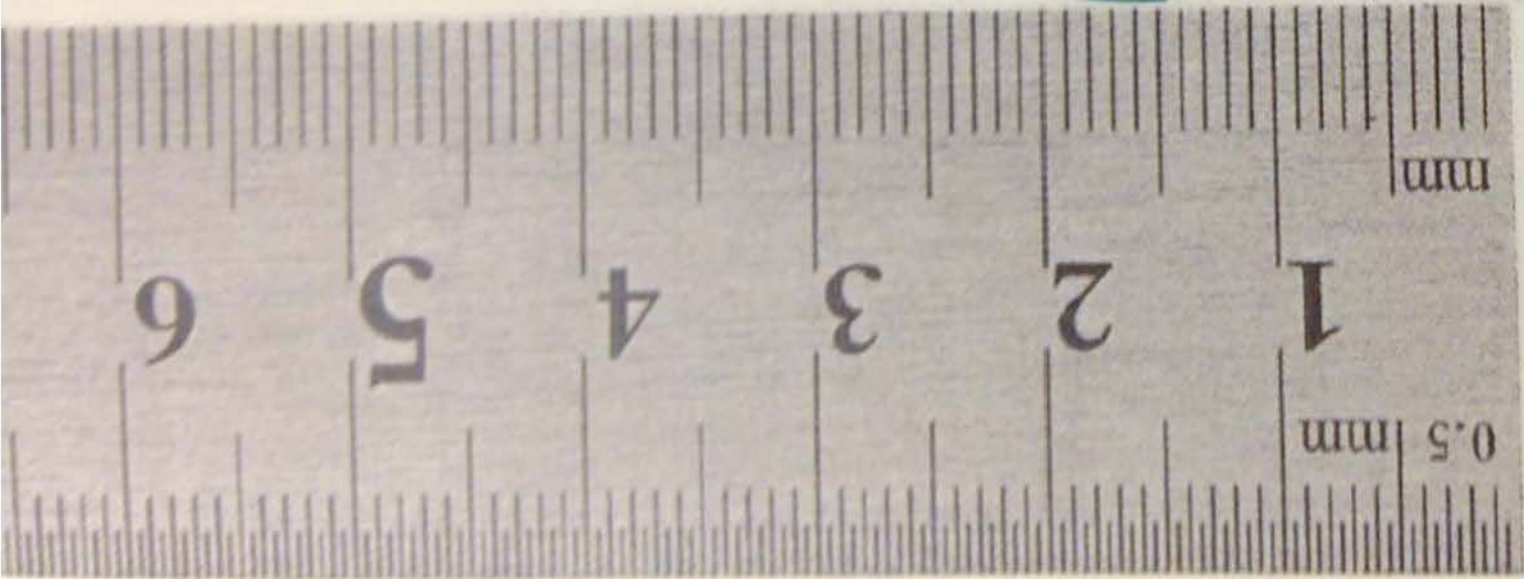
CW5501 within GPW-2000 and OCW-G2000

*OCW-G2000 is not applicable to this application.



CW5501 within GPW-2000 and OCW-G2000

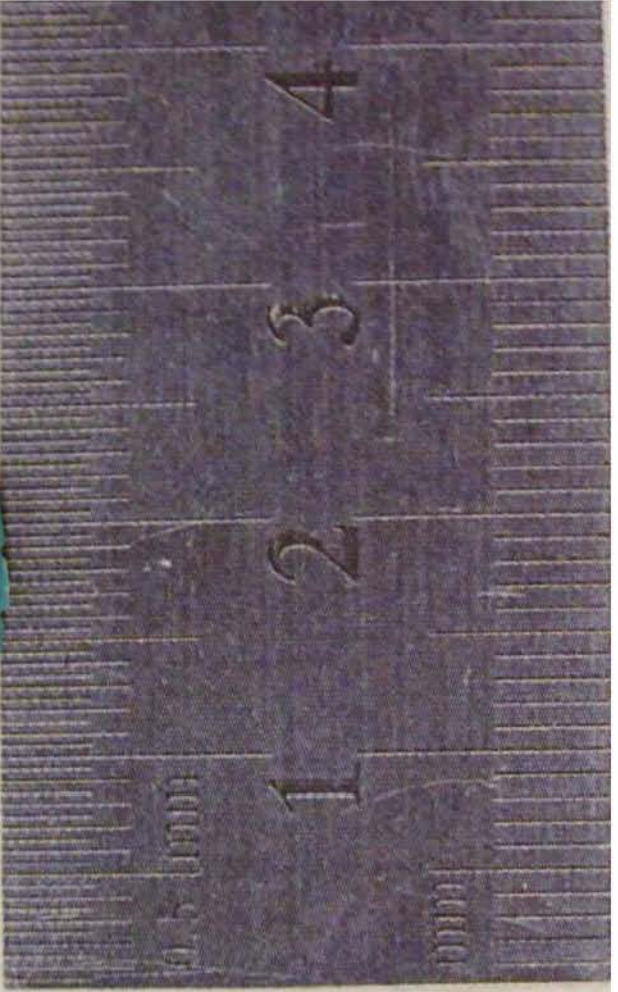


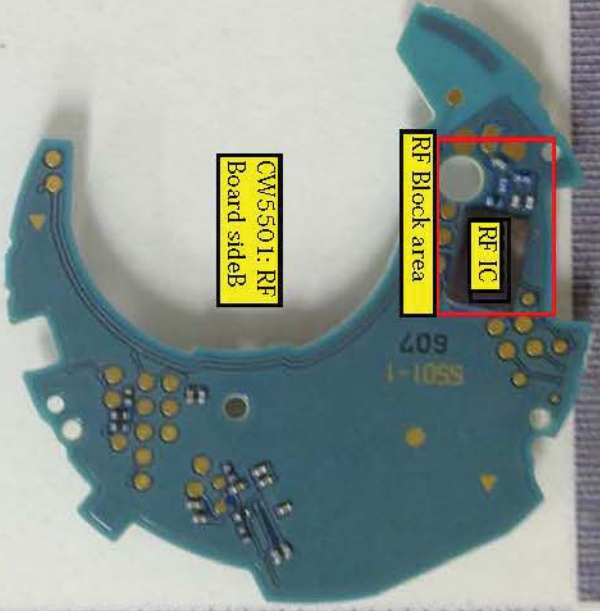
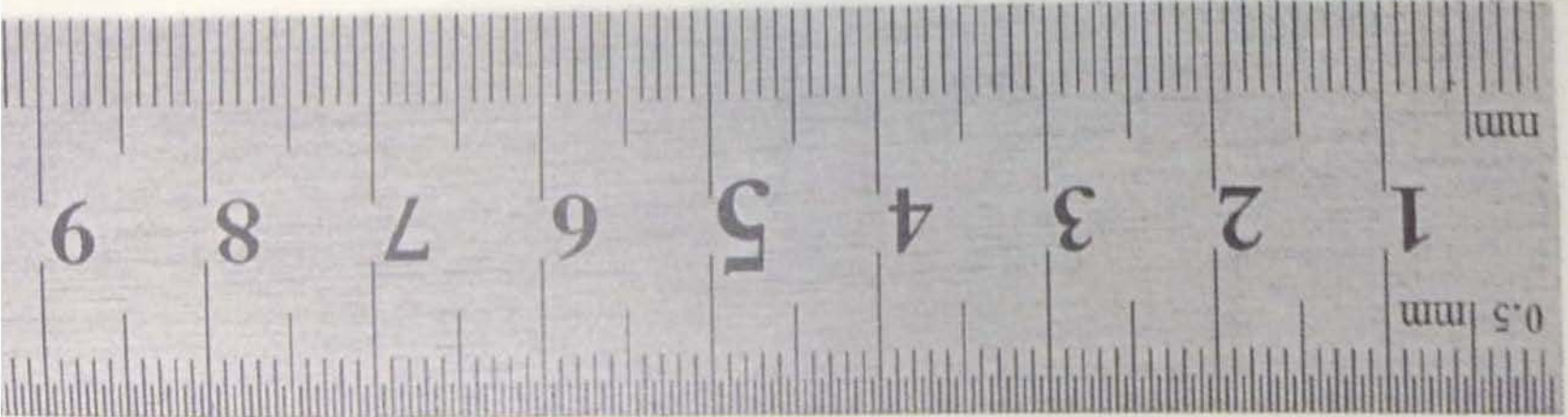


Antenna area

CW5501: RF Board sideA

26MHz X'tal



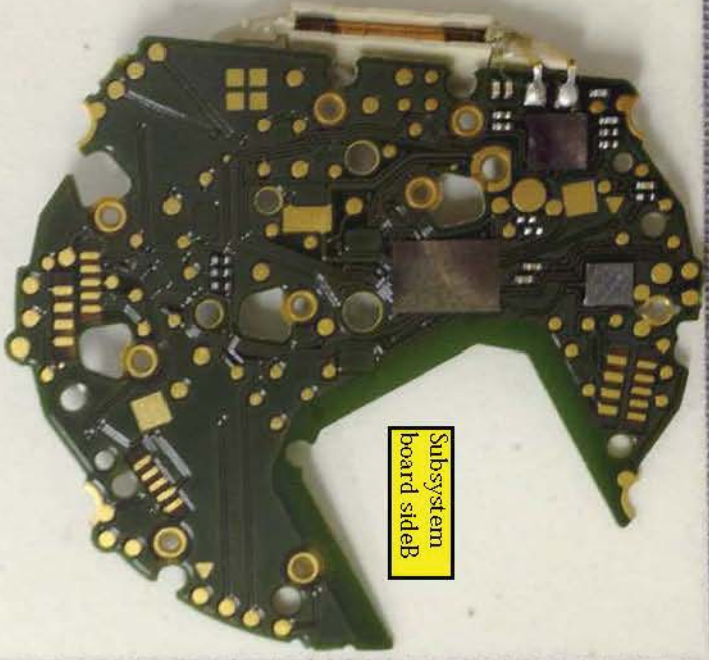
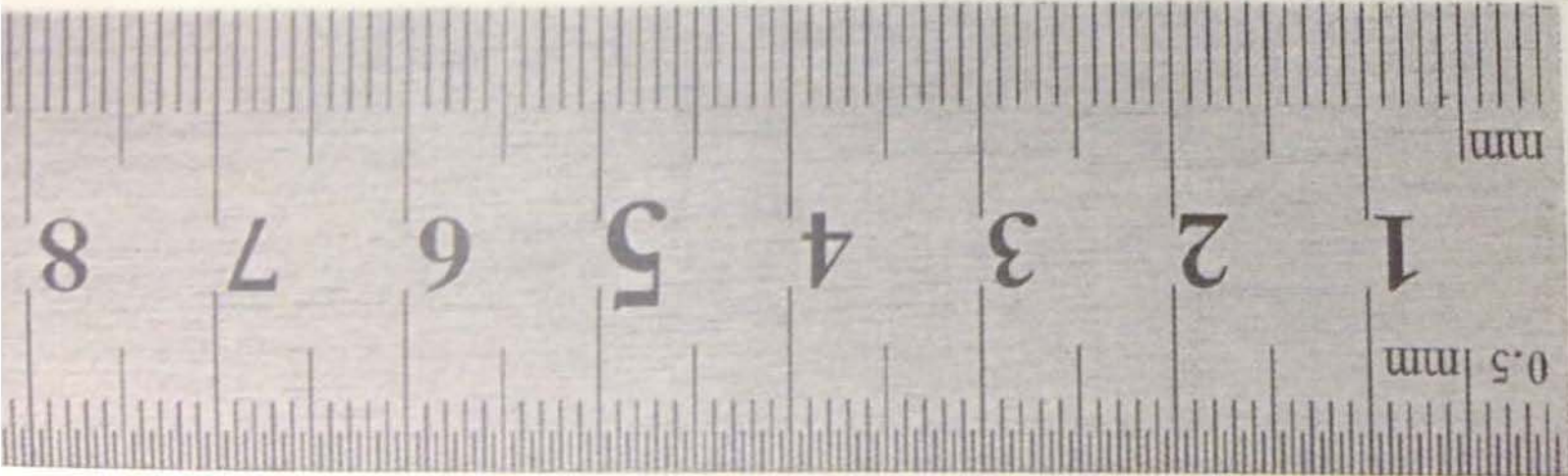


CW5501: RF
Board side B

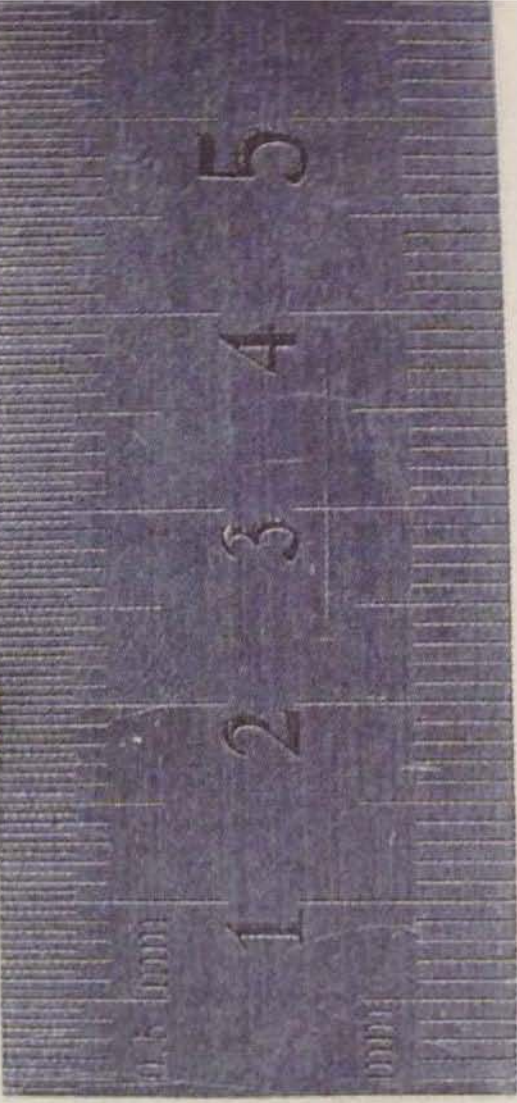
RF Block area

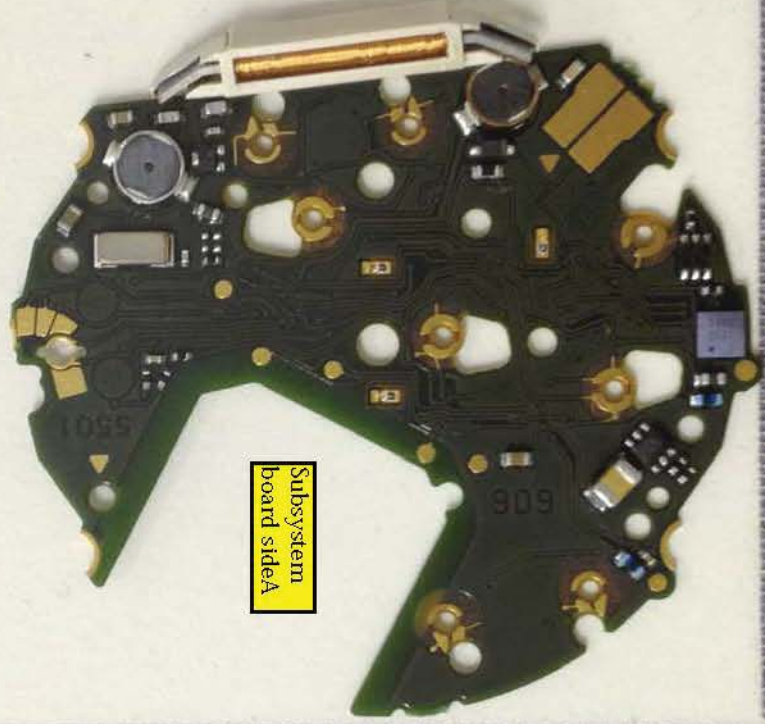
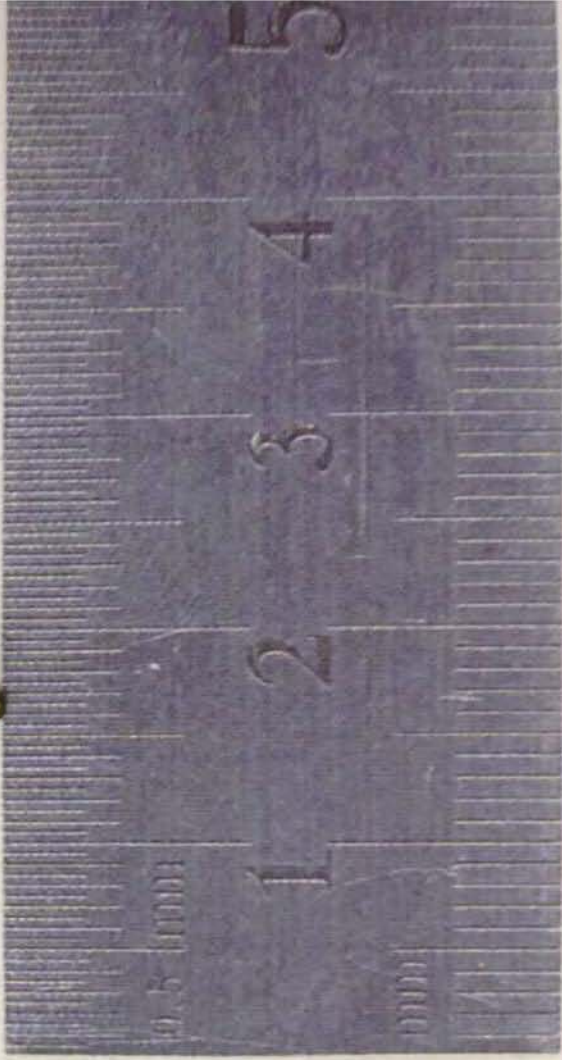
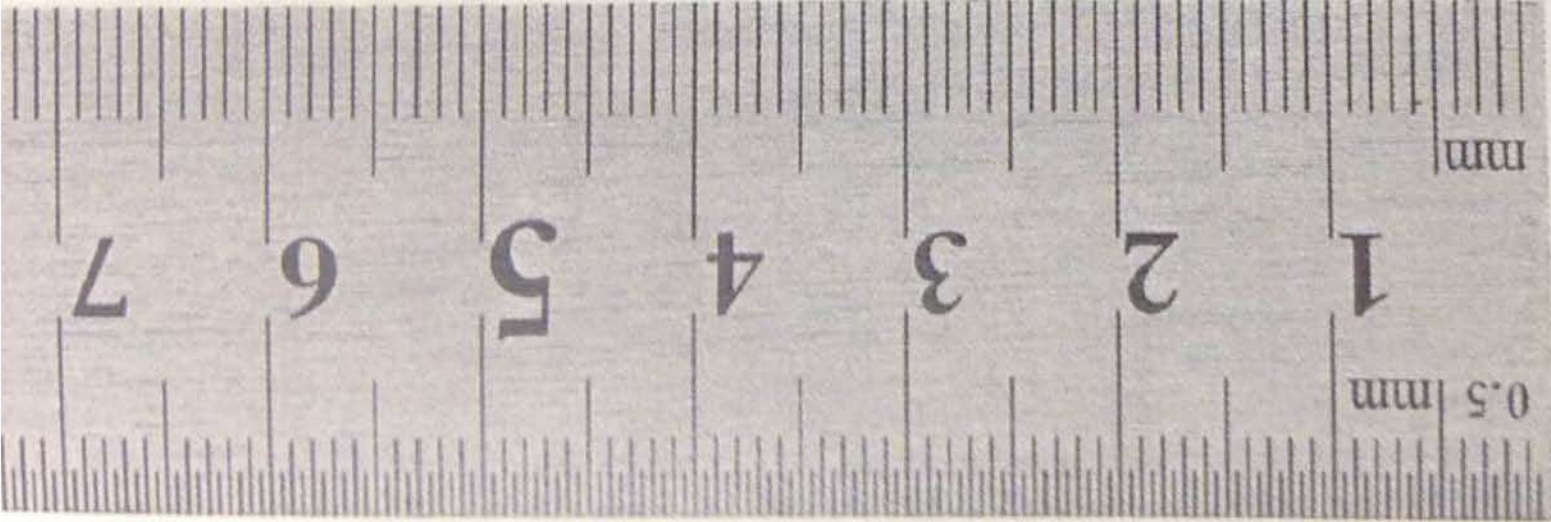
RF IC 1





Subsystem
board sideB





Subsystem
board side A