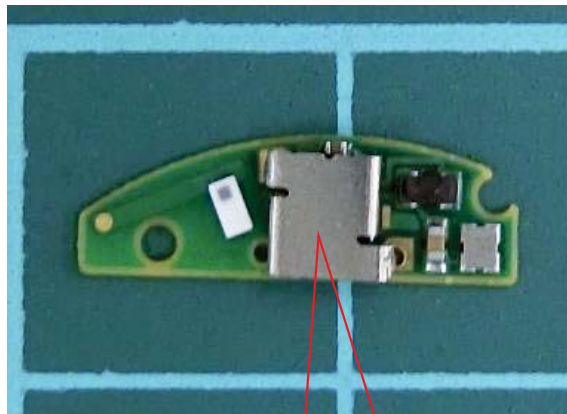


# M1 Certificate Label Position

M1 board  
With label attached



M1 board Front Side



Affix a label here

M1 Certificate Label



Font size: 4 points

※ This label is firmly bonded to the shield surface, but it would peel off from the module. That is why we will indicate the FCC ID and the ISED number, PMN and HVIN in a prominent in the user manual too.