




FCC SAR Test Report

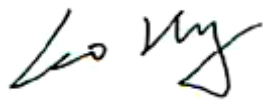
FCC ID: BBQEXFR10

Project No. : 1404167
Equipment : DIGITAL CAMERA
Model Name : EX-FR10
Applicant : CASIO COMPUTER CO., LTD.
Address : 2-1, Sakaecho 3-chome, Hamura-shi Tokyo
205-8555

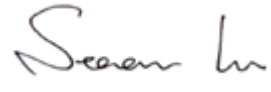
Tested by: Neutron Engineering Inc. EMC Laboratory
Date of Receipt: Apr. 10, 2014
Date of Test: May 20, 2014 ~ May 26, 2014
Date of Issue: May. 30, 2014

Testing Engineer : 

(Super Jiang)

Technical Manager : 

(Leo Hung)

Authorized Signatory : 

(Steven Lu)

Neutron Engineering Inc.

No.3, Jinshagang 1st Road, ShiXia,
Dalang Town, Dong Guan, China.

TEL: 0769-8318-3000

FAX: 0769-8319-6000



Declaration

Neutron represents to the client that testing is done in accordance with standard procedures as applicable and that test instruments used has been calibrated with the standards traceable to National Measurement Laboratory (**NML**), or National Institute of Standards and Technology (**NIST**) .

Neutron's reports apply only to the specific samples tested under conditions. It is manufacture's responsibility to ensure that additional production units of this model are manufactured with the identical electrical and mechanical components. **Neutron** shall have no liability for any declarations, inferences or generalizations drawn by the client or others from **Neutron** issued reports.

Neutron's reports must not be used by the client to claim product endorsement by the authorities or any agency of the Government.

This report is the confidential property of the client. As a mutual protection to the clients, the public and **Neutron-self**, extracts from the test report shall not be reproduced except in full with **Neutron's** authorized written approval.

Neutron's laboratory quality assurance procedures are in compliance with the **ISO Guide 17025** requirements, and accredited by the conformity assessment authorities listed in this test report.

Limitation

For the use of the authority's logo is limited unless the Test Standard(s)/Scope(s)/Item(s) mentioned in this test report is (are) included in the conformity assessment authorities acceptance respective.



Table of Contents	Page
1 . GENERAL SUMMARY	6
2 . RF EMISSIONS MEASUREMENT	7
2.1 TEST FACILITY	7
2.2 MEASUREMENT UNCERTAINTY	7
3 . GENERAL INFORMATION	8
3.1 GENERAL DESCRIPTION OF EUT	8
3.2 THE MAXIMUM SAR _{1G} VALUES	9
3.3 LABORATORY ENVIRONMENT	9
3.4 MAIN TEST INSTRUMENTS	10
4 . SAR MEASUREMENTS SYSTEM CONFIGURATION	11
4.1 SAR MEASUREMENT SET-UP	11
4.2 DASY5 E-FIELD PROBE SYSTEM	12
5 . TISSUE-EQUIVALENT LIQUID	19
5.1 TISSUE-EQUIVALENT LIQUID INGREDIENTS	19
5.2 TISSUE-EQUIVALENT LIQUID PROPERTIES	19
6 . SYSTEM CHECK	20
6.1 DESCRIPTION OF SYSTEM CHECK	20
6.2 DESCRIPTION OF SYSTEM CHECK	21
7 . OPERATIONAL CONDITIONS DURING TEST	22
7.1 GENERAL DESCRIPTION OF TEST PROCEDURES	22
7.2 TEST POSITION	22
7.2.1 TEST POSITION REQUIREMENTS	22
7.2.2 SAR TEST REDUCTION AND EXCLUSION GUIDANCE	22
8 . TEST RESULT	25
8.1 CONDUCTED POWER RESULTS	25
8.2 SAR TEST RESULTS	27
8.2.1 WIFI	27
8.3 SIMULTANEOUS TRANSMISSION CONDITIONS	28
APPENDIX	29
1. TEST LAYOUT	29
2. SYSTEM CHECK RESULTS	30



Table of Contents	Page
3. GRAPH RESULTS	31
4. PROBE CALIBRATION CERTIFICATE	33
5. (1) D2450V2 DIPOLE CALIBRATION CERTIFICATE	44
6. DAE4 CALIBRATION CERTIFICATE	52
7. EUT TESTING POSITION AND ANTENNA LOCATION	57



REPORT ISSUED HISTORY

Issued No.	Description	Issued Date
NEI-FCC-SAR-1404167	Original Issue.	May. 30, 2014



1. GENERAL SUMMARY

Equipment	DIGITAL CAMERA
Model Name	EX-FR10
Brand Name	N/A
Model Difference	N/A
Manufacturer	CASIO COMPUTER CO., LTD.
Address	6-2, Hon-machi 1-chome, Shibuya-ku, Tokyo 151-8543, Japan
Standard(s)	<p>FCC 47CFR §2.1093 Radio frequency Radiation Exposure Evaluation: Portable Devices</p> <p>ANSI C95.1, 1999 Safety Levels with Respect to Human Exposure to Radio Frequency Electromagnetic Fields, 3 kHz to 300 GHz.(IEEE Std C95.1-1999)</p> <p>IEEE 1528 2013: IEEE Recommended Practice for Determining the Peak Spatial-Average Specific Absorption Rate (SAR) in the Human Head from Wireless Communications Devices: Measurement Techniques</p> <p>KDB 248227 D01 v01r02 SAR meas for 802 11 a b g v01r02: SAR Measurement Procedures for 802.11a/b/g Transmitters</p> <p>KDB 447498 D01 General RF Exposure Guidance v05r02: Mobile and Portable Device RF Exposure Procedures and Equipment Authorization Policies.</p> <p>KDB 865664 D01 SAR measurement 100 MHz to 6GHz v01r03: SAR Measurement Requirements for 100MHz to 6GHz</p>

The above equipment has been tested and found compliance with the requirement of the relative standards by Neutron Engineering Inc. EMC Laboratory.

The test data, data evaluation, and equipment configuration contained in our test report (Ref No. NEI-FCC-SAR-1404167) were obtained utilizing the test procedures, test instruments, test sites that has been accredited by the Authority of TAF according to the ISO-17025 quality assessment standard and technical standard(s).



2. RF EMISSIONS MEASUREMENT

2.1 TEST FACILITY

The test facilities used to collect the test data in this report is **SAR room** at the location of No.3, Jinshagang 1st Road, ShiXia, Dalang Town, Dong Guan, China.523792

2.2 MEASUREMENT UNCERTAINTY

Uncertainty Component	Uncertainty Value	Probability Distribution	Divisor	C _i (1g)	Standard Uncertainty ±1%	V _i or V _{eff}
Measurement System						
Probe Calibration (k=1)	5.9	Normal	1	1	5.9	∞
Axial Isotropy	4.7	Rectangular	√3	√0.5	1.9	∞
Hemispherical Isotropy	9.6	Rectangular	√3	√0.5	3.9	∞
Boundary Effect	1.0	Rectangular	√3	1	0.6	∞
Linearity	4.7	Rectangular	√3	1	2.7	∞
System Detection Limit	1.0	Rectangular	√3	1	0.6	∞
Readout Electronics	0.3	Normal	1	1	0.3	∞
Response Time	0.8	Rectangular	√3	1	0.5	∞
Integration Time	2.6	Rectangular	√3	1	1.5	∞
RF Ambient Conditions-Noise	3.0	Rectangular	√3	1	1.7	∞
RF Ambient Reflections	3.0	Rectangular	√3	1	1.7	∞
Probe Positioner Mechanical Tolerance	0.4	Rectangular	√3	1	0.2	∞
Probe Positioning with respect to Phantom Shell	2.9	Rectangular	√3	1	1.7	∞
Extrapolation, interpolation and integration Algorithms for Max. SAR Evaluation	1.0	Rectangular	√3	1	0.6	∞
Test Sample Related						
Test sample Positioning	2.9	Normal	1	1	2.9	145
Device Holder Uncertainty	3.6	Normal	1	1	3.6	5
Output Power Variation - SAR drift measurement	5.0	Rectangular	√3	1	2.9	∞
Phantom and Setup						
Phantom Uncertainty (shape and thickness tolerances)	4.0	Rectangular	√3	1	2.3	∞
Liquid Conductivity - deviation from target values	5.0	Rectangular	√3	0.64	1.8	∞
Liquid Conductivity - measurement uncertainty	2.5	Normal	1	0.64	1.6	∞
Liquid Permittivity - deviation from target values	5.0	Rectangular	√3	0.6	1.7	∞
Liquid Permittivity - measurement uncertainty	2.5	Normal	1	0.6	1.5	∞
Combined standard uncertainty		RSS	-	-	10.9	387
Expanded uncertainty		k=2	-	-	21.9	-



3. GENERAL INFORMATION

3.1 GENERAL DESCRIPTION OF EUT

Device Type	Portable Device		
Tested Mode(s)	Bluetooth; WiFi(802.11b/g/ n HT20)		
Operation Frequency	Mode	TX(MHz)	RX(MHz)
	Bluetooth	2402 ~2480	2402 ~2480
	WiFi	2412~2462	2412~2462
Modulation Technology And Bit Rate of Transmitter	Bluetooth	GFSK(1Mbps) $\pi/4$ DQPSK(2Mbps) 8DPSK(3Mbps)	
	WiFi	802.11b: (CCK, DQPSK,DBPSK) 1, 2, 5.5, 11 Mbps 802.11g: (OFDM) 6, 9, 12, 18, 24, 36, 48, 54 Mbps 802.11n: (OFDM) MCS 0-7	
Test Channel (Low-Middle-High)	0-39-78 1-6-11	(Bluetooth) (802.11b/g/ n HT20)	
Antenna Type	Please refer to note 1		

Note:

1. Table for Filed Antenna (BT)

Ant.	Brand	Mode No.	Antenna Type	Connector	Gain (dBi)	Note
1	WIESON	A04	Chip	N/A	2.35	TX/RX

Table for Filed Antenna (WIFI)

Ant.	Brand	Mode No.	Antenna Type	Connector	Gain (dBi)	Note
1	N/A	N/A	N/A	N/A	-3.04	TX/RX



3.2 THE MAXIMUM SAR_{1G} VALUES

Body SAR Configuration

Test Mode	Frequency (MHz)	Test Position	Separation Distance	Limit SAR _{1g} 1.6W/kg	
				Measured Result SAR _{1g} (W/kg)	Reported Result SAR _{1g} (W/kg)
802.11b	2462	Test Position 3	0mm	0.065	0.079

3.3 LABORATORY ENVIRONMENT

Temperature	Min. = 18°C, Max. = 25°C
Relative humidity	Min. = 30%, Max. = 70%
Ground system resistance	< 0.5Ω
Ambient noise is checked and found very low and in compliance with requirement of standards.	
Reflection of surrounding objects is minimized and in compliance with requirement of standards.	



3.4 MAIN TEST INSTRUMENTS

Item	Kind of Equipment	Manufacturer	Type No.	Serial No.	Calibrated until
1	Data Acquisition Electronics	Speag	DAE4	1390	Sep. 09, 2014
2	E-field Probe	Speag	EX3DV4	3932	Sep. 15, 2014
3	Electro Optical Converter	Speag	ECO90	1151	N/A
4	SAM Twin Phantom	Speag	SAM	1784	N/A
5	System Validation Dipole	Speag	D2450V2	919	Sep. 05, 2014
6	Power Amplifier	Speag	ZHL-42W	N/A	N/A
7	Power Amplifier	Speag	ZVE-8G	N/A	N/A
8	ENA Network Analyzer	Agilent	E5071C	MY46102965	Mar. 29, 2015
9	Dielectric Probe Kit	Agilent	85070E	2593	N/A
10	P-series power meter	Agilent	N1911A	MY45100473	Mar. 29, 2015
11	wideband power sensor	Agilent	N1921A	MY51100041	Mar. 29, 2015
12	Power Meter	Anritsu	ML2487A	6K00004714	Mar. 16, 2015
13	Power Meter Sensor	Anritsu	MA2491A	34138	Mar. 16, 2015
14	MXG Analog Signal Generator	Agilent	N5181A	MY49060710	Nov. 09, 2014

Remark: " N/A" denotes no model name, serial No. or calibration specified.
 All calibration period of equipment list is one year.

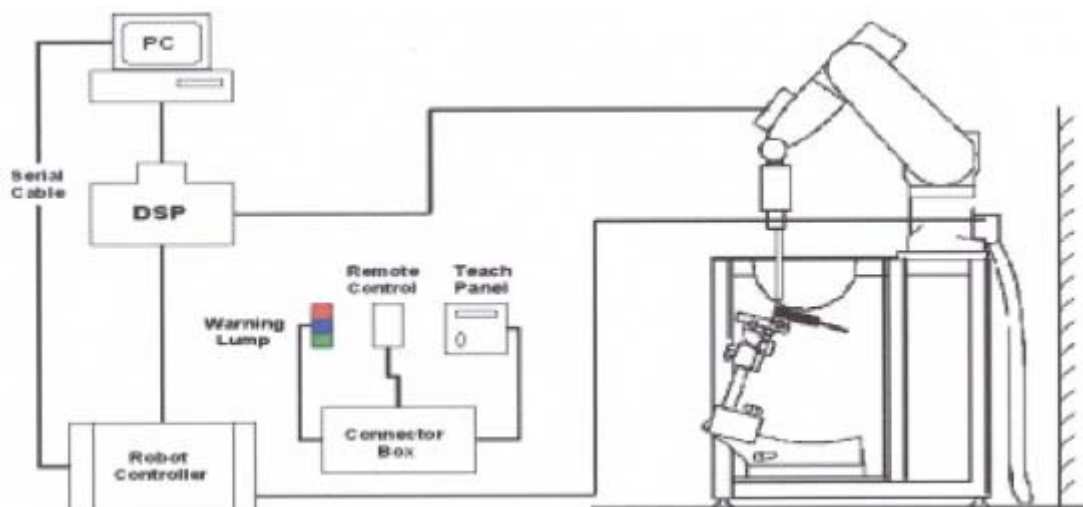
4. SAR MEASUREMENTS SYSTEM CONFIGURATION

4.1 SAR MEASUREMENT SET-UP

The DASY5 system for performing compliance tests consists of the following items:

1. A standard high precision 6-axis robot (Stäubli RX family) with controller and software. An arm extension for accommodating the data acquisition electronics (DAE).
2. A dosimetric probe, i.e. an isotropic E-field probe optimized and calibrated for usage in tissue simulating liquid. The probe is equipped with an optical surface detector system.
3. A data acquisition electronic (DAE) which performs the signal amplification, signal multiplexing, AD-conversion, offset measurements, mechanical surface detection, collision detection, etc. The unit is battery powered with standard or rechargeable batteries. The signal is optically transmitted to the EOC.
4. A unit to operate the optical surface detector which is connected to the EOC.
5. The Electro-Optical Coupler (EOC) performs the conversion from the optical into a digital electric signal of the DAE. The EOC is connected to the DASY5 measurement server.
6. The DASY5 measurement server, which performs all real-time data evaluation for field measurements and surface detection, controls robot movements and handles safety operation. A computer operating Windows 7
7. DASY5 software and SEMCAD data evaluation software.
8. Remote control with teach panel and additional circuitry for robot safety such as warning lamps, etc.
9. The generic twin phantom enabling the testing of left-hand and right-hand usage.
10. The device holder for handheld mobile phones.
11. Tissue simulating liquid mixed according to the given recipes.
12. System validation dipoles allowing to validate the proper functioning of the system.

4.1.1 Test Setup Layout





4.2 DASY5 E-FIELD PROBE SYSTEM

The SAR measurements were conducted with the dosimetric probe ES3DV3 (manufactured by SPEAG), designed in the classical triangular configuration and optimized for dosimetric evaluation.

4.2.1 ES3DV3 PROBE SPECIFICATION

Construction	Symmetrical design with triangular core Interleaved sensors Built-in shielding against static charges PEEK enclosure material (resistant to organic solvents, e.g., DGBE)
Calibration	ISO/IEC 17025 calibration service available
Frequency	10 MHz to 4 GHz Linearity: ± 0.2 dB (30 MHz to 4 GHz)
Directivity	± 0.2 dB in HSL (rotation around probe axis) ± 0.3 dB in tissue material (rotation normal to probe axis)
Dynamic Range	5 μ W/g to > 100 mW/g Linearity: ± 0.2 dB
Dimensions	Overall length: 330 mm (Tip: 20 mm) Tip diameter: 3.9 mm (Body: 12 mm) Distance from probe tip to dipole centers: 2.0 mm



EX3DV4 E-field Probe



4.2.2 E-FIELD PROBE CALIBRATION

Each probe is calibrated according to a dosimetric assessment procedure with accuracy better than $\pm 10\%$. The spherical isotropy was evaluated and found to be better than $\pm 0.25\text{dB}$. The sensitivity parameters (NormX, NormY, NormZ), the diode compression parameter (DCP) and the conversion factor (ConvF) of the probe are tested.

The free space E-field from amplified probe outputs is determined in a test chamber. This is performed in a TEM cell for frequencies below 1 GHz, and in a wave guide above 1 GHz for free space. For the free space calibration, the probe is placed in the volumetric center of the cavity and at the proper orientation with the field. The probe is then rotated 360 degrees.

E-field temperature correlation calibration is performed in a flat phantom filled with the appropriate simulated brain tissue. The measured free space E-field in the medium correlates to temperature rise in a dielectric medium. For temperature correlation calibration a RF transparent thermistor-based temperature probe is used in conjunction with the E-field probe.

$$\text{SAR} = C \frac{\Delta T}{\Delta t}$$

Where: Δt = Exposure time (30 seconds),

C = Heat capacity of tissue (brain or muscle),

ΔT = Temperature increase due to RF exposure.

Or
$$\text{SAR} = \frac{|E|^2 \sigma}{\rho}$$

Where: σ = Simulated tissue conductivity,

ρ = Tissue density (kg/m^3).



4.2.3 OTHER TEST EQUIPMENT

4.2.3.1. Device Holder for Transmitters

Construction: Simple but effective and easy-to-use extension for Mounting Device that facilitates the testing of larger devices (e.g., laptops, cameras, etc.) It is lightweight and fits easily on the upper part of the Mounting Device in place of the phone positioner. The extension is fully compatible with the Twin SAM, ELI4 and SAM v6.0 Phantoms.

Material: POM, Acrylic glass, Foam

4.2.3.2 Phantom

The SAM twin phantom is a berglass shell phantom with 2mm shell thickness (except the ear region, where shell thickness increases to 6 mm). The phantom has three measurement areas:

- _ Left hand
- _ Right hand
- _ Flat phantom

The bottom plate contains three pairs of bolts for locking the device holder. The device holder positions are adjusted to the standard measurement positions in the three sections. A white cover is provided to cover the phantom during o -periods to prevent water evaporation and changes in the liquid parameters. Free space scans of devices on top of this phantom cover are possible.



SAM twin Phantom



4.2.4 SCANNING PROCEDURE

The DASY5 installation includes predefined files with recommended procedures for measurements and validation. They are read-only document files and destined as fully defined but unmeasured masks. All test positions (head or body-worn) are tested with the same configuration of test steps differing only in the grid definition for the different test positions.

The "reference" and "drift" measurements are located at the beginning and end of the batch process. They measure the field drift at one single point in the liquid over the complete procedure. The indicated drift is mainly the variation of the DUT's output power and should vary max. $\pm 5\%$.

The "surface check" measurement tests the optical surface detection system of the DASY5 system by repeatedly detecting the surface with the optical and mechanical surface detector and comparing the results. The output gives the detecting heights of both systems, the difference between the two systems and the standard deviation of the detection repeatability. Air bubbles or refraction in the liquid due to separation of the sugar-water mixture gives poor repeatability (above $\pm 0.1\text{mm}$). To prevent wrong results tests are only executed when the liquid is free of air bubbles. The difference between the optical surface detection and the actual surface depends on the probe and is specified with each probe. (It does not depend on the surface reflectivity or the probe angle to the surface within $\pm 30^\circ$.)

- Area Scan

The Area Scan is used as a fast scan in two dimensions to find the area of high field values before running a detailed measurement around the hot spot. Before starting the area scan a grid spacing of 10 mm x 10 mm is set. During the scan the distance of the probe to the phantom remains unchanged. After finishing area scan, the field maxima within a range of 2 dB will be ascertained.

- Zoom Scan

Zoom Scans are used to estimate the peak spatial SAR values within a cubic averaging volume containing 1 g and 10 g of simulated tissue. The default Zoom Scan is done by 7x7x7 points within a cube whose base is centered around the maxima found in the preceding area scan.

- Spatial Peak Detection

The procedure for spatial peak SAR evaluation has been implemented and can determine values of masses of 1g and 10g, as well as for user-specific masses. The DASY5 system allows evaluations that combine measured data and robot positions, such as:

- maximum search
- extrapolation
- boundary correction
- peak search for averaged SAR

During a maximum search, global and local maxima searches are automatically performed in 2-D after each Area Scan measurement with at least 6 measurement points. It is based on the evaluation of the local SAR gradient calculated by the Quadratic Shepard's method. The algorithm will find the global maximum and all local maxima within -2 dB of the global maxima for all SAR distributions.

Extrapolation routines are used to obtain SAR values between the lowest measurement points and the inner phantom surface. The extrapolation distance is determined by the surface detection distance and the probe sensor offset. Several measurements at different distances are necessary for the extrapolation. Extrapolation routines require at least 10 measurement points in 3-D space. They are used in the Zoom Scan to obtain SAR values between the lowest measurement points and the inner phantom surface. The routine uses the modified Quadratic Shepard's method for extrapolation. For a grid using 7x7x7 measurement points with 5mm resolution amounting to 343 measurement points, the uncertainty of the extrapolation routines is less than 1% for 1g and 10g cubes.



4.2.5 DATA STORAGE AND EVALUATION

4.2.5.1 Data Storage

The DASY5 software stores the acquired data from the data acquisition electronics as raw data (in microvolt readings from the probe sensors), together with all necessary software parameters for the data evaluation (probe calibration data, liquid parameters and device frequency and modulation data) in measurement files with the extension “.DAE4”. The software evaluates the desired unit and format for output each time the data is visualized or exported. This allows verification of the complete software setup even after the measurement and allows correction of incorrect parameter settings. For example, if a measurement has been performed with a wrong crest factor parameter in the device setup, the parameter can be corrected afterwards and the data can be re-evaluated.

The measured data can be visualized or exported in different units or formats, depending on the selected probe type ([V/m], [A/m], [°C], [mW/g], [mW/cm²], [dBrel], etc.). Some of these units are not available in certain situations or show meaningless results, e.g., a SAR output in a lossless media will always be zero. Raw data can also be exported to perform the evaluation with other software packages.



4.4.2 Data Evaluation by SEMCAD

The SEMCAD software automatically executes the following procedures to calculate the field units from the microvolt readings at the probe connector. The parameters used in the evaluation are stored in the configuration modules of the software:

Probe parameters:	Sensitivity	Normi, a ₁₀ , a ₁₁ , a ₁₂
	Conversion factor	ConvF _i
	Diode compression point	Dcp _i
Device parameters:	Frequency	f
	Crest factor	cf
Media parameters:	Conductivity	
	Density	

These parameters must be set correctly in the software. They can be found in the component documents or they can be imported into the software from the configuration files issued for the DASY5 components. In the direct measuring mode of the multimeter option, the parameters of the actual system setup are used. In the scan visualization and export modes, the parameters stored in the corresponding document files are used.

The first step of the evaluation is a linearization of the filtered input signal to account for the compression characteristics of the detector diode. The compensation depends on the input signal, the diode type and the DC-transmission factor from the diode to the evaluation electronics.

If the exciting field is pulsed, the crest factor of the signal must be known to correctly compensate for peak power. The formula for each channel can be given as:

$$V_i = U_i + U_i^2 \cdot cf / dcp_i$$

With	V _i = compensated signal of channel i	(i = x, y, z)
	U _i = input signal of channel i	(i = x, y, z)
	cf = crest factor of exciting field	(DASY parameter)
	dcp _i = diode compression point	(DASY parameter)



From the compensated input signals the primary field data for each channel can be evaluated:

$$\text{E-field probes: } E_i = (V_i / \text{Norm}_i \cdot \text{ConvF})^{1/2}$$

$$\text{H-field probes: } H_i = (V_i)^{1/2} \cdot (a_{i0} + a_{i1} f + a_{i2} f^2) / f$$

With V_i = compensated signal of channel i ($i = x, y, z$)

Norm_i = sensor sensitivity of channel i ($i = x, y, z$)
 [mV/(V/m)²] for E-field Probes

ConvF = sensitivity enhancement in solution

a_{ij} = sensor sensitivity factors for H-field probes

f = carrier frequency [GHz]

E_i = electric field strength of channel i in V/m

H_i = magnetic field strength of channel i in A/m

The RSS value of the field components gives the total field strength (Hermitian magnitude):

$$E_{\text{tot}} = (E_x^2 + E_y^2 + E_z^2)^{1/2}$$

The primary field data are used to calculate the derived field units.

$$\text{SAR} = (E_{\text{tot}})^2 \cdot \sigma / (\rho \cdot 1000)$$

With SAR = local specific absorption rate in mW/g

E_{tot} = total field strength in V/m
 = conductivity in [mho/m] or [Siemens/m]
 = equivalent tissue density in g/cm³

Note that the density is normally set to 1 (or 1.06), to account for actual brain density rather than the density of the simulation liquid. The power flow density is calculated assuming the excitation field to be a free space field.

$$P_{\text{pwe}} = E_{\text{tot}}^2 / 3770 \text{ or } P_{\text{pwe}} = H_{\text{tot}}^2 \cdot 37.7$$

With P_{pwe} = equivalent power density of a plane wave in mW/cm²

E_{tot} = total field strength in V/m

H_{tot} = total magnetic field strength in A/m



5. TISSUE-EQUIVALENT LIQUID

5.1 TISSUE-EQUIVALENT LIQUID INGREDIENTS

The liquid is consisted of water, salt and Glycol. The liquid has previously been proven to be suited for worst-case. The Table 2 shows the detail solution. It's satisfying the latest tissue dielectric parameters requirements proposed

Composition of the Tissue Equivalent Matter

MIXTURE%	FREQUENCY 2450MHz
Water	62.7
Glycol	36.8
Salt	0.5
Dielectric Parameters Target Value	f=2450MHz $\epsilon=39.20$ $\sigma=1.80$

5.2 TISSUE-EQUIVALENT LIQUID PROPERTIES

Dielectric Performance of Tissue Simulating Liquid

Frequency (MHz)	Description	Dielectric Parameters		Temp °C
		ϵ_r	σ (s/m)	
2450	Target value	52.70	1.95	22.0
	±5% within	50.07-55.34	1.85-2.048	
	Measurement value 2014-05-23	51.40	2.00	21.8

6. SYSTEM CHECK

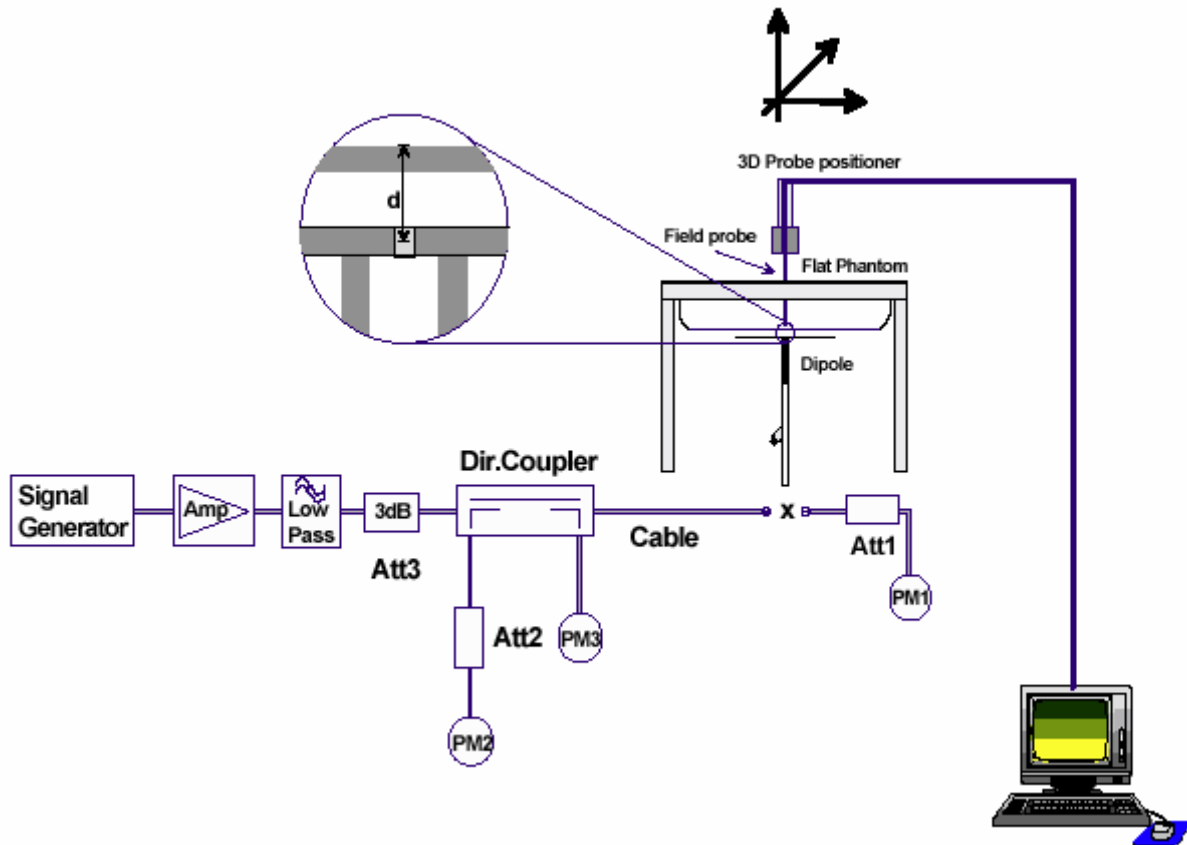
6.1 DESCRIPTION OF SYSTEM CHECK

The manufacturer calibrates the probes annually. Dielectric parameters of the tissue simulants were measured every day using the dielectric probe kit and the network analyzer. A system check measurement was made following the determination of the dielectric parameters of the simulant, using the dipole validation kit. A power level of 250 mW was supplied to the dipole antenna, which was placed under the flat section of the twin SAM phantom. The system check results (dielectric parameters and SAR values) are given in the 6.2.

System check results have to be equal or near the values determined during dipole calibration with the relevant liquids and test system ($\pm 10\%$).

System check is performed regularly on all frequency bands where tests are performed with the DASY5 system.

System Check Set-up





6.2 DESCRIPTION OF SYSTEM CHECK

System Check in Tissue Simulating Liquid

Frequency (MHz)	Test Date	Dielectric Parameters		Temp	250mW Measured SAR _{1g}	1W Normalized SAR _{1g}	1W Target SAR _{1g} (±10% deviation)
		ε _r	σ(s/m)	(°C)	(W/kg)		
2450	2014-05-23	51.40	2.00	21.80	12.6	50.40	49.30 (44.37~54.23)

Note: 1. The graph results see Appendix 2.
 2. Target Value derives from the calibration certificate



7. OPERATIONAL CONDITIONS DURING TEST

7.1 General Description of Test Procedures

For WLAN SAR testing, WLAN engineering testing software installed on the DUT can provide continuous transmitting RF signal. This RF signal utilized in SAR measurement has almost 100% duty cycle and its crest factor is 1.

For the 802.11b/g/n SAR tests, a communication link is set up with the test mode software for WIFI mode test. During the test, at the each test frequency channel, the EUT is operated at the RF continuous emission mode. Each channel should be tested at the lowest data rate. Testing at higher data rates is not required when the maximum average output power is less than 0.25dB higher than those measured at the lowest data rate.

802.11b/g/n operating modes are tested independently according to the service requirements in each frequency band. 802.11b/g/n modes are tested on the maximum average output channel.

SAR is not required for 802.11g/n channels when the maximum average output power is less than 0.25dB higher than that measured on the corresponding 802.11b channels.

7.2 Test Position

7.2.1 Test Position Requirements

The SAR Exclusion Threshold in KDB 447498 D01 can be applied to determine SAR test exclusion for adjacent edge configurations. The closest distance from the antenna to an adjacent edge is used to determine if SAR testing is required for the adjacent edges, with the adjacent edge positioned adjacent the phantom and the edge containing the antenna positioned perpendicular to the phantom.

7.2.2 SAR test reduction and exclusion guidance

(1) The SAR exclusion threshold for distances < 50mm is defined by the following equation:

$$\frac{(\text{max. power of channel, including tune-up tolerance, mW})}{(\text{min. test separation distance, mm})} \sqrt{\text{Frequency (GHz)}} \leq 3.0$$

(2) The SAR exclusion threshold for distances > 50mm is defined by the following equation, as illustrated in KDB 447498 D01 Appendix B:

a) at 100 MHz to 1500 MHz

$$[\text{Power allowed at numeric Threshold at 50 mm in step 1}) + (\text{test separation distance} - 50 \text{ mm}) \cdot (f_{\text{MHz}}/150)] \text{ mW}$$

b) at >1500MHz and ≤6GHz

$$[\text{Power allowed at numeric Threshold at 50 mm in step 1}) + (\text{test separation distance} - 50 \text{ mm}) \cdot 10] \text{ mW}$$



The location of the antenna inside EUT is shown in APPENDIX 7.

Test Position 1: The front side of the EUT towards the bottom of the flat phantom distance 0mm. (APPENDIX 7 Picture 1)

SAR is not required for BT/WiFi antenna in this position.

$$\text{Evaluation}_{(\text{BT})} = [10^{(1/10)}/17] * (2.480^{1/2}) = 0.117 < 3.0$$

$$\text{Evaluation}_{(\text{WiFi})} = [10^{(13.5/10)}/17] * (2.462^{1/2}) = 2.07 < 3.0$$

Test Position 2: The back side(0 degree) of the EUT towards the bottom of the flat phantom distance 0mm. (APPENDIX 7 Picture 2)

SAR is required for WiFi antenna in this position.

SAR is not required for BT antenna in this position.

$$\text{Evaluation}_{(\text{BT})} = [10^{(1/10)}/8] * (2.480^{1/2}) = 0.248 < 3.0$$

$$\text{Evaluation}_{(\text{WiFi})} = [10^{(13.5/10)}/8] * (2.462^{1/2}) = 4.39 > 3.0$$

Test Position 3: The back side (180 degree) of the EUT towards the bottom of the flat phantom distance 0mm. (APPENDIX 7 Picture 3)

SAR is required for WiFi antenna in this position.

SAR is not required for BT antenna in this position.

$$\text{Evaluation}_{(\text{BT})} = [10^{(1/10)}/9] * (2.480^{1/2}) = 0.220 < 3.0$$

$$\text{Evaluation}_{(\text{WiFi})} = [10^{(13.5/10)}/9] * (2.462^{1/2}) = 3.9 > 3.0$$

Test Position 4: The top side of the EUT towards the bottom of the flat phantom distance 0mm. (APPENDIX 7 Picture 4)

SAR is not required for BT/WiFi antenna in this position.

$$\text{Evaluation}_{(\text{BT})} = [10^{(1/10)}/13] * (2.480^{1/2}) = 0.153 < 3.0$$

$$\text{Evaluation}_{(\text{WiFi})} = [10^{(13.5/10)}/13] * (2.462^{1/2}) = 2.7 < 3.0$$

Test Position 5: The bottom side of the EUT towards the bottom of the flat phantom distance 0mm. (APPENDIX 7 Picture 5)

SAR is not required for BT/WiFi antenna in this position.

$$\text{Evaluation}_{(\text{BT})} = [10^{(1/10)}/42] * (2.480^{1/2}) = 0.047 < 3.0$$

$$\text{Evaluation}_{(\text{WiFi})} = [10^{(13.5/10)}/42] * (2.462^{1/2}) = 0.836 < 3.0$$



Test Position 6: The left side of the EUT towards the bottom of the flat phantom distance 0mm.
(APPENDIX 7 Picture 6)

SAR is not required for BT/WiFi antenna in this position.

$$\text{Evaluation}_{(\text{BT})} = [10^{(1/10)}/14] * (2.480^{1/2}) = 0.142 < 3.0$$

$$\text{Evaluation}_{(\text{WiFi})} = [10^{(13.5/10)}/38] * (2.462^{1/2}) = 0.924 < 3.0$$

Test Position 7: The right side of the EUT towards the bottom of the flat phantom distance 0mm.
(APPENDIX 7 Picture 7)

SAR is not required for BT/WiFi antenna in this position.

$$\text{Evaluation}_{(\text{BT})} = [10^{(1/10)}/45] * (2.480^{1/2}) = 0.044 < 3.0$$

$$\text{Evaluation}_{(\text{WiFi})} = [10^{(13.5/10)}/15] * (2.462^{1/2}) = 2.342 < 3.0$$



8. TEST RESULT

8.1 CONDUCTED POWER RESULTS

The average output power of BT antenna is as following:

Channel	Ch0	Ch39	Ch78
GFSK(dBm)	-0.28	0.4	-1.45
EDR 3M-8DPSK(dBm)	0.92	0.94	-1.06

The average output power of WiFi antenna is as following:

Test Mode	Data Rate (Mbps)	Test Results (dBm)		
		Conducted AV		
		2412MHz	2437MHz	2462MHz
802.11b	1	12.24	12.52	12.65
	2	12.13	12.23	12.42
	5.5	12.05	12.08	12.29
	11	11.92	11.99	12.04

Test Mode	Data Rate (Mbps)	Test Results (dBm)		
		Conducted AV		
		2412MHz	2437MHz	2462MHz
802.11g	6	10.48	10.76	10.98
	9	10.32	10.58	10.73
	12	10.21	10.44	10.62
	18	10.23	10.42	10.5
	24	10.26	10.37	10.41
	36	10.21	10.33	10.38
	48	10.45	10.41	10.53
	54	10.37	10.49	10.15



Test Mode	Data Rate (Mbps)	Test Results (dBm)		
		Conducted AV		
		2412MHz	2437MHz	2462MHz
802.11n HT20	MCS0	10.32	10.57	10.63
	MCS1	10.19	10.36	10.26
	MCS2	10.2	10.33	10.31
	MCS3	10.18	10.27	10.45
	MCS4	10.25	10.2	10.41
	MCS5	10.12	10.21	10.42
	MCS6	10.03	10.13	10.44
	MCS7	10.09	10.22	10.51



8.2 SAR TEST RESULTS

8.2.1 WIFI

802.11b									
Test Position	Channel Frequency (MHz)	Duty Cycle	Maximum Allowed Power (dBm)	Conducted power (dBm)	Drift ±0.21dB	Limit of SAR 1.6 W/kg			
					Drift (dB)	Measured SAR (W/kg)	Scaling factor	Reported SAR (W/kg)	Graph Results
Test Position of Body(Distance=0mm)									
1	NA	NA	NA	NA	NA	NA	NA	NA	NA
2	2462	1:1	13.5	12.65	-0.03	0.034	1.216	0.041	1
3	2462	1:1	13.5	12.65	-0.06	0.065	1.216	0.079	2
4	NA	NA	NA	NA	NA	NA	NA	NA	NA
5	NA	NA	NA	NA	NA	NA	NA	NA	NA
6	NA	NA	NA	NA	NA	NA	NA	NA	NA
7	NA	NA	NA	NA	NA	NA	NA	NA	NA

- Note: 1. The value with boldface is the maximum SAR Value of each test band.
 2. Per FCC KDB Publication 447498 D01, if the reported (scaled) SAR measured at the middle channel or highest output power channel for each test configuration is ≤ 0.8 W/kg then testing at the other channels is not required for such test configuration(s).
 3. KDB 248227-SAR is not required for 802.11g/n channels when the maximum average output power is less than 1/4dB higher than measured on the corresponding 802.11b channels.



8.3 SIMULTANEOUS TRANSMISSION CONDITIONS

Band		Simultaneous transmission
WIFI	Bluetooth(BT)	NO

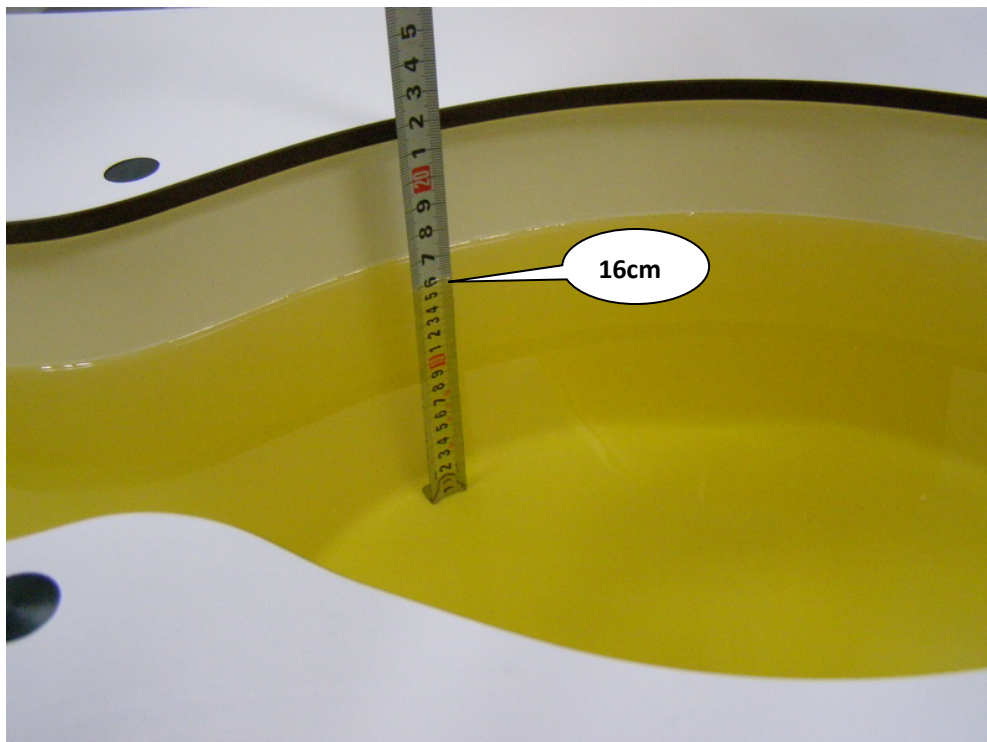
APPENDIX

1. Test Layout

Specific Absorption Rate Test Layout



Liquid depth in the flat Phantom ($\geq 15\text{cm}$ depth)





2. System Check Results

Date/Time: 05/23/2014 08:38:32

Test Laboratory: Neutron Engineering Inc.

System Performance Check Body 2450MHz

DUT: Dipole 2450 MHz D2450V2; Type: D2450V2; Serial: D2450V2 - SN:919

Communication System: UID 0, CW (0); Frequency: 2450 MHz

Medium parameters used: $f = 2450$ MHz; $\sigma = 2.0$ S/m; $\epsilon_r = 51.4$; $\rho = 1000$ kg/m³

Phantom section: Flat Section

Measurement Standard: DASY5 (IEEE/IEC/ANSI C63.19-2007)

DASY Configuration:

- Probe: EX3DV4 - SN3932; ConvF(7.34, 7.34, 7.34); Calibrated: 09/16/2013;
- Sensor-Surface: 2mm (Mechanical Surface Detection), $z = 1.0, 31.0$
- Electronics: DAE4 Sn1390; Calibrated: 09/10/2013
- Phantom: SAM 1; Type: SAM; Serial: 1784
- DASY52 52.8.7(1137); SEMCAD X 14.6.10(7164)

System Performance Check at 2450MHz/d=10mm, Pin=250 mW, dist=2.0mm (EX-Probe)/Area

Scan (5x7x1): Measurement grid: dx=15mm,dy=15mm

Maximum value of SAR (measured) = 20.2 W/kg

System Performance Check at 2450MHz/d=10mm, Pin=250 mW, dist=2.0mm (EX-Probe)/Zoom

Scan (7x7x7) (7x7x7)/Cube 0: Measurement

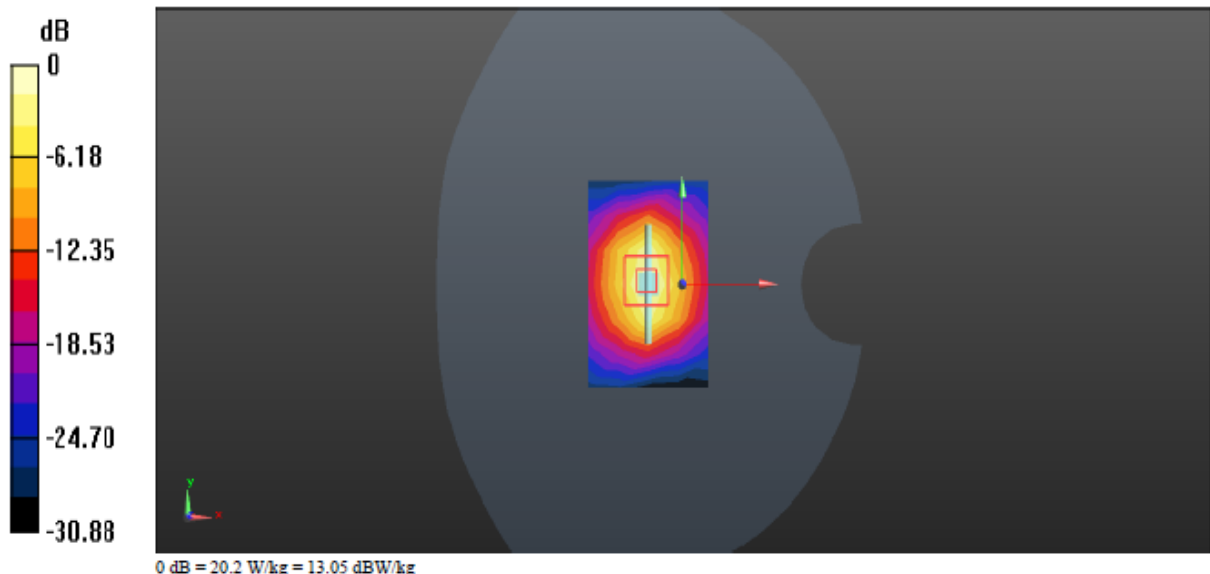
grid: dx=5mm, dy=5mm, dz=5mm

Reference Value = 101.1 V/m; Power Drift = -0.02 dB

Peak SAR (extrapolated) = 27.5 W/kg

SAR(1 g) = 12.6 W/kg; SAR(10 g) = 6.01 W/kg

Maximum value of SAR (measured) = 20.1 W/kg





3. Graph Results

Date/Time: 05/23/2014 10:11:08

Test Laboratory: Neutron Engineering Inc.

Digital Camera EX-FR10 802.11b 2462MHz CH11 Test Position 2

DUT: Digital Camera ; Type: EX-FR10; Serial: NA

Communication System: UID 0, IEEE 802.11b WiFi 2.4GHz (DSSS,1Mbps) (0); Frequency: 2462 MHz

Medium parameters used (interpolated): $f = 2462$ MHz; $\sigma = 2.024$ S/m; $\epsilon_r = 51.672$; $\rho = 1000$ kg/m³

Phantom section: Flat Section

Measurement Standard: DASYS5 (IEEE/IEC/ANSI C63.19-2007)

DASY Configuration:

- Probe: EX3DV4 - SN3932; ConvF(7.34, 7.34, 7.34); Calibrated: 09/16/2013;
- Sensor-Surface: 2mm (Mechanical Surface Detection), $z = 1.0, 31.0$
- Electronics: DAE4 Sn1390; Calibrated: 09/10/2013
- Phantom: SAM 1; Type: SAM; Serial: 1784
- DASYS52 52.8.7(1137); SEMCAD X 14.6.10(7164)

Test Position 2/EX-FR10 802.11b CH11/Area Scan (9x9x1): Measurement grid: $dx=10$ mm, $dy=10$ mm

Maximum value of SAR (measured) = 0.0467 W/kg

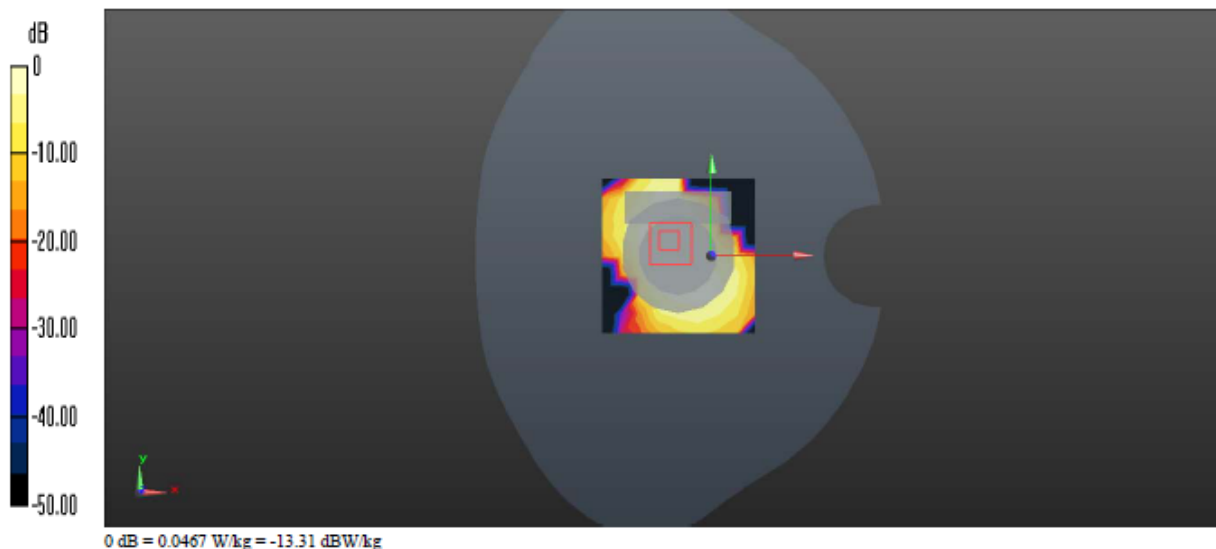
Test Position 2/EX-FR10 802.11b CH11/Zoom Scan (7x7x7) (7x7x7)/Cube 0: Measurement grid: $dx=5$ mm, $dy=5$ mm, $dz=5$ mm

Reference Value = 4.737 V/m; Power Drift = -0.03 dB

Peak SAR (extrapolated) = 0.0570 W/kg

SAR(1 g) = 0.034 W/kg; SAR(10 g) = 0.018 W/kg

Maximum value of SAR (measured) = 0.0457 W/kg





Date/Time: 05/23/2014 11:58:26

Test Laboratory: Neutron Engineering Inc.

Digital Camera EX-FR10 802.11b 2462MHz CH11 Test Position 3

DUT: Digital Camera ; Type: EX-FR10; Serial: NA

Communication System: UID 0, IEEE 802.11b WiFi 2.4GHz (DSSS,1Mbps) (0); Frequency: 2462 MHz

Medium parameters used (interpolated): $f = 2462$ MHz; $\sigma = 2.024$ S/m; $\epsilon_r = 51.672$; $\rho = 1000$ kg/m³

Phantom section: Flat Section

Measurement Standard: DASYS5 (IEEE/IEC/ANSI C63.19-2007)

DASY Configuration:

- Probe: EX3DV4 - SN3932; ConvF(7.34, 7.34, 7.34); Calibrated: 09/16/2013;
- Sensor-Surface: 2mm (Mechanical Surface Detection), $z = 1.0, 31.0$
- Electronics: DAE4 Sn1390; Calibrated: 09/10/2013
- Phantom: SAM 1; Type: SAM; Serial: 1784
- DASYS5 52.8.7(1137); SEMCAD X 14.6.10(7164)

Test Position 3/EX-FR10 802.11b CH11/Area Scan (10x15x1): Measurement grid: $dx=10$ mm, $dy=10$ mm

Maximum value of SAR (measured) = 0.0890 W/kg

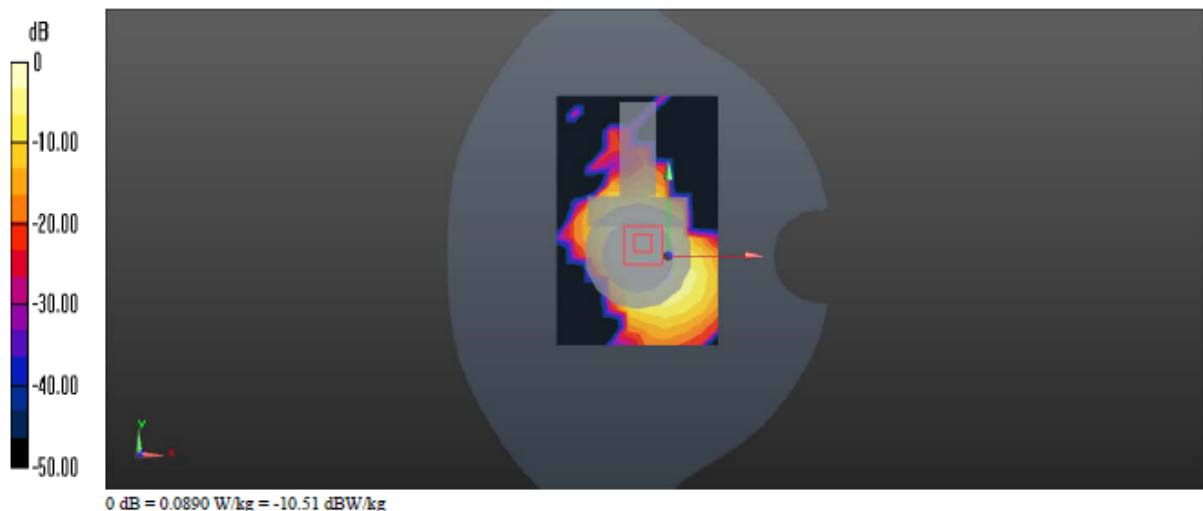
Test Position 3/EX-FR10 802.11b CH11/Zoom Scan (7x7x7) (7x7x7)/Cube 0: Measurement grid: $dx=5$ mm, $dy=5$ mm, $dz=5$ mm

Reference Value = 6.237 V/m; Power Drift = -0.06 dB

Peak SAR (extrapolated) = 0.111 W/kg

SAR(1 g) = 0.065 W/kg; SAR(10 g) = 0.035 W/kg

Maximum value of SAR (measured) = 0.0868 W/kg





4. Probe Calibration Certificate

EX3DV4

**Calibration Laboratory of
Schmid & Partner
Engineering AG**
Zeughausstrasse 43, 8004 Zurich, Switzerland



S Schweizerischer Kalibrierdienst
S Service suisse d'étalonnage
S Servizio svizzero di taratura
S Swiss Calibration Service

Accredited by the Swiss Accreditation Service (SAS)
The Swiss Accreditation Service is one of the signatories to the EA
Multilateral Agreement for the recognition of calibration certificates

Accreditation No.: **SCS 108**

Client **Neutron Engineering (Auden)**

Certificate No: **EX3-3932_Sep13**

CALIBRATION CERTIFICATE

Object: **EX3DV4 - SN:3932**

Calibration procedure(s): **QA CAL-01.v9, QA CAL-14.v4, QA CAL-23.v5, QA CAL-25.v6
Calibration procedure for dosimetric E-field probes**

Calibration date: **September 16, 2013**

This calibration certificate documents the traceability to national standards, which realize the physical units of measurements (SI).
The measurements and the uncertainties with confidence probability are given on the following pages and are part of the certificate.

All calibrations have been conducted in the closed laboratory facility: environment temperature (22 ± 3)°C and humidity < 70%.

Calibration Equipment used (M&TE critical for calibration)

Primary Standards	ID	Cal Date (Certificate No.)	Scheduled Calibration
Power meter E4419B	GB41293874	04-Apr-13 (No. 217-01733)	Apr-14
Power sensor E4412A	MY41498067	04-Apr-13 (No. 217-01733)	Apr-14
Reference 3 dB Attenuator	SN: S5054 (3c)	04-Apr-13 (No. 217-01737)	Apr-14
Reference 20 dB Attenuator	SN: S5277 (20x)	04-Apr-13 (No. 217-01735)	Apr-14
Reference 30 dB Attenuator	SN: S5129 (30b)	04-Apr-13 (No. 217-01738)	Apr-14
Reference Probe ES3DV2	SN: 3013	28-Dec-12 (No. ES3-3013_Dec12)	Dec-13
DAE4	SN: 660	4-Sep-13 (No. DAE4-660_Sep13)	Apr-14
Secondary Standards	ID	Check Date (in house)	Scheduled Check
RF generator HP 8648C	US9642UD1700	4-Aug-99 (in house check Apr-13)	In house check: Apr-15
Network Analyzer HP 8753E	US37390585	18-Oct-01 (in house check Oct-12)	In house check: Oct-13

Calibrated by: **Leif Klysner** (Name), **Laboratory Technician** (Function), *[Signature]* (Signature)

Approved by: **Katja Pokovic** (Name), **Technical Manager** (Function), *[Signature]* (Signature)

Issued: September 17, 2013

This calibration certificate shall not be reproduced except in full without written approval of the laboratory.



Calibration Laboratory of Schmid & Partner Engineering AG Zeughausstrasse 43, 8004 Zurich, Switzerland



S Schweizerischer Kalibrierdienst
S Service suisse d'etalonnage
S Servizio svizzero di taratura
S Swiss Calibration Service

Accredited by the Swiss Accreditation Service (SAS)
The Swiss Accreditation Service is one of the signatories to the EA Multilateral Agreement for the recognition of calibration certificates

Accreditation No.: SCS 108

Glossary:

Table with 2 columns: Term and Definition. Terms include TSL, NORMx,y,z, ConvF, DCP, CF, A, B, C, D, Polarization phi, and Polarization psi.

Calibration is Performed According to the Following Standards:

- a) IEEE Std 1528-2003, "IEEE Recommended Practice for Determining the Peak Spatial-Averaged Specific Absorption Rate (SAR) in the Human Head from Wireless Communications Devices: Measurement Techniques", December 2003
b) IEC 62209-1, "Procedure to measure the Specific Absorption Rate (SAR) for hand-held devices used in close proximity to the ear (frequency range of 300 MHz to 3 GHz)", February 2005

Methods Applied and Interpretation of Parameters:

- NORMx,y,z: Assessed for E-field polarization psi = 0 (f <= 900 MHz in TEM-cell; f > 1800 MHz: R22 waveguide). NORMx,y,z are only intermediate values, i.e., the uncertainties of NORMx,y,z does not affect the E^2-field uncertainty inside TSL (see below ConvF).
NORM(f)x,y,z = NORMx,y,z * frequency_response (see Frequency Response Chart). This linearization is implemented in DASY4 software versions later than 4.2. The uncertainty of the frequency response is included in the stated uncertainty of ConvF.
DCPx,y,z: DCP are numerical linearization parameters assessed based on the data of power sweep with CW signal (no uncertainty required). DCP does not depend on frequency nor media.
PAR: PAR is the Peak to Average Ratio that is not calibrated but determined based on the signal characteristics
Ax,y,z; Bx,y,z; Cx,y,z; Dx,y,z; VRx,y,z; A, B, C, D are numerical linearization parameters assessed based on the data of power sweep for specific modulation signal. The parameters do not depend on frequency nor media. VR is the maximum calibration range expressed in RMS voltage across the diode.
ConvF and Boundary Effect Parameters: Assessed in flat phantom using E-field (or Temperature Transfer Standard for f <= 800 MHz) and inside waveguide using analytical field distributions based on power measurements for f > 800 MHz. The same setups are used for assessment of the parameters applied for boundary compensation (alpha, depth) of which typical uncertainty values are given. These parameters are used in DASY4 software to improve probe accuracy close to the boundary. The sensitivity in TSL corresponds to NORMx,y,z * ConvF whereby the uncertainty corresponds to that given for ConvF. A frequency dependent ConvF is used in DASY version 4.4 and higher which allows extending the validity from +/- 50 MHz to +/- 100 MHz.
Spherical isotropy (3D deviation from isotropy): in a field of low gradients realized using a flat phantom exposed by a patch antenna.
Sensor Offset: The sensor offset corresponds to the offset of virtual measurement center from the probe tip (on probe axis). No tolerance required.



EX3DV4 – SN:3932

September 16, 2013

Probe EX3DV4

SN:3932

Manufactured: July 24, 2013
Calibrated: September 16, 2013

Calibrated for DASY/EASY Systems
(Note: non-compatible with DASY2 system!)



EX3DV4- SN:3932

September 16, 2013

DASY/EASY - Parameters of Probe: EX3DV4 - SN:3932

Basic Calibration Parameters

	Sensor X	Sensor Y	Sensor Z	Unc (k=2)
Norm ($\mu\text{V}/(\text{V}/\text{m})^2$) ^A	0.52	0.55	0.46	$\pm 10.1 \%$
DCP (mV) ^B	102.3	102.8	101.8	

Modulation Calibration Parameters

UID	Communication System Name		A dB	B dB $\sqrt{\mu\text{V}}$	C	D dB	VR mV	Unc ^E (k=2)
0	CW	X	0.0	0.0	1.0	0.00	167.8	$\pm 3.0 \%$
		Y	0.0	0.0	1.0		179.9	
		Z	0.0	0.0	1.0		157.1	

The reported uncertainty of measurement is stated as the standard uncertainty of measurement multiplied by the coverage factor $k=2$, which for a normal distribution corresponds to a coverage probability of approximately 95%.

^A The uncertainties of NormX,Y,Z do not affect the E²-field uncertainty inside TSL (see Pages 5 and 6).

^B Numerical linearization parameter: uncertainty not required.

^E Uncertainty is determined using the max. deviation from linear response applying rectangular distribution and is expressed for the square of the field value.



DASY/EASY - Parameters of Probe: EX3DV4 - SN:3932

Calibration Parameter Determined in Head Tissue Simulating Media

f (MHz) ^C	Relative Permittivity ^F	Conductivity (S/m) ^F	ConvF X	ConvF Y	ConvF Z	Alpha	Depth (mm)	Unct. (k=2)
750	41.9	0.89	10.36	10.36	10.36	0.20	1.35	± 12.0 %
835	41.5	0.90	9.89	9.89	9.89	0.29	1.02	± 12.0 %
900	41.5	0.97	9.67	9.67	9.67	0.21	1.33	± 12.0 %
1750	40.1	1.37	8.47	8.47	8.47	0.33	0.89	± 12.0 %
1900	40.0	1.40	8.21	8.21	8.21	0.12	1.47	± 12.0 %
2100	39.8	1.49	8.31	8.31	8.31	0.80	0.50	± 12.0 %
2300	39.5	1.67	7.75	7.75	7.75	0.43	0.70	± 12.0 %
2450	39.2	1.80	7.40	7.40	7.40	0.36	0.81	± 12.0 %
2600	39.0	1.96	7.16	7.16	7.16	0.44	0.78	± 12.0 %

^C Frequency validity of ± 100 MHz only applies for DASY v4.4 and higher (see Page 2), else it is restricted to ± 50 MHz. The uncertainty is the RSS of the ConvF uncertainty at calibration frequency and the uncertainty for the indicated frequency band.

^F At frequencies below 3 GHz, the validity of tissue parameters (ϵ and σ) can be relaxed to ± 10% if liquid compensation formula is applied to measured SAR values. At frequencies above 3 GHz, the validity of tissue parameters (ϵ and σ) is restricted to ± 5%. The uncertainty is the RSS of the ConvF uncertainty for indicated target tissue parameters.



DASY/EASY - Parameters of Probe: EX3DV4 - SN:3932

Calibration Parameter Determined in Body Tissue Simulating Media

f (MHz) ^C	Relative Permittivity ^F	Conductivity (S/m) ^F	ConvF X	ConvF Y	ConvF Z	Alpha	Depth (mm)	Unct. (k=2)
750	55.5	0.96	9.92	9.92	9.92	0.21	1.47	± 12.0 %
835	55.2	0.97	9.92	9.92	9.92	0.30	1.12	± 12.0 %
900	55.0	1.05	9.67	9.67	9.67	0.51	0.79	± 12.0 %
1750	53.4	1.49	8.14	8.14	8.14	0.56	0.73	± 12.0 %
1900	53.3	1.52	7.80	7.80	7.80	0.42	0.80	± 12.0 %
2100	53.2	1.62	8.12	8.12	8.12	0.29	1.01	± 12.0 %
2300	52.9	1.81	7.57	7.57	7.57	0.59	0.68	± 12.0 %
2450	52.7	1.95	7.34	7.34	7.34	0.80	0.50	± 12.0 %
2600	52.5	2.16	7.08	7.08	7.08	0.80	0.50	± 12.0 %
5200	49.0	5.30	4.69	4.69	4.69	0.45	1.90	± 13.1 %
5300	48.9	5.42	4.48	4.48	4.48	0.45	1.90	± 13.1 %
5500	48.6	5.65	4.15	4.15	4.15	0.50	1.90	± 13.1 %
5600	48.5	5.77	4.07	4.07	4.07	0.45	1.90	± 13.1 %
5800	48.2	6.00	4.19	4.19	4.19	0.55	1.90	± 13.1 %

^C Frequency validity of ± 100 MHz only applies for DASY v4.4 and higher (see Page 2), else it is restricted to ± 50 MHz. The uncertainty is the RSS of the ConvF uncertainty at calibration frequency and the uncertainty for the indicated frequency band.

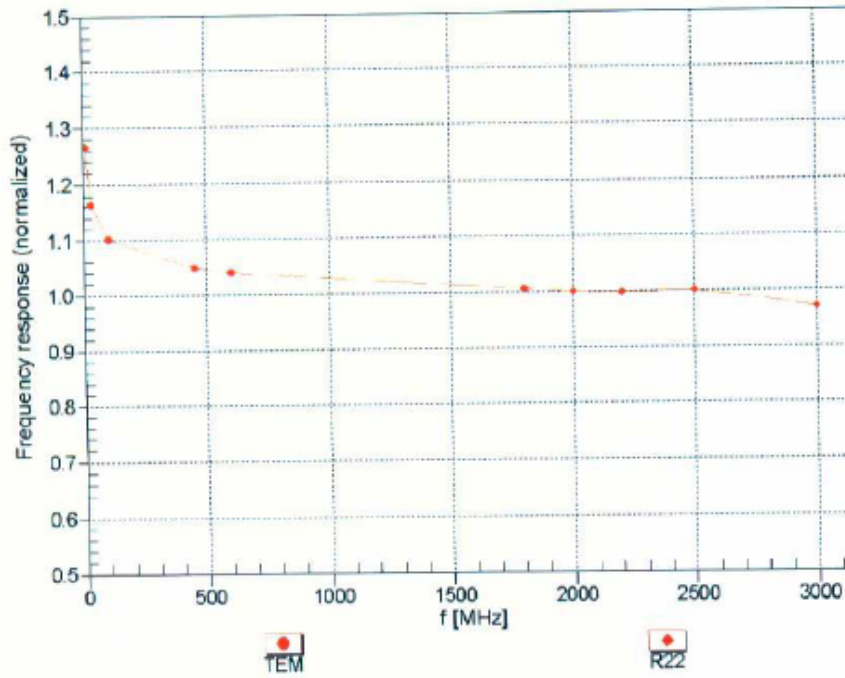
^F At frequencies below 3 GHz, the validity of tissue parameters (ϵ and σ) can be relaxed to ± 10% if liquid compensation formula is applied to measured SAR values. At frequencies above 3 GHz, the validity of tissue parameters (ϵ and σ) is restricted to ± 5%. The uncertainty is the RSS of the ConvF uncertainty for indicated target tissue parameters.



EX3DV4- SN:3932

September 16, 2013

Frequency Response of E-Field (TEM-Cell:ifi110 EXX, Waveguide: R22)



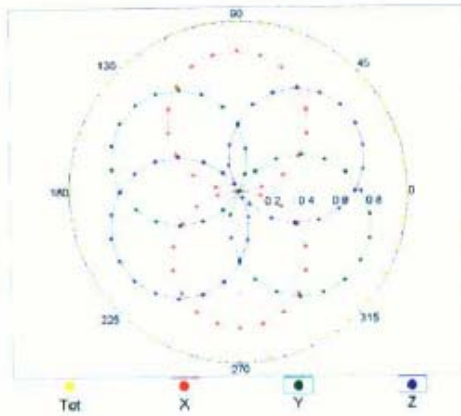
Uncertainty of Frequency Response of E-field: $\pm 6.3\%$ (k=2)

EX3DV4-SN:3932

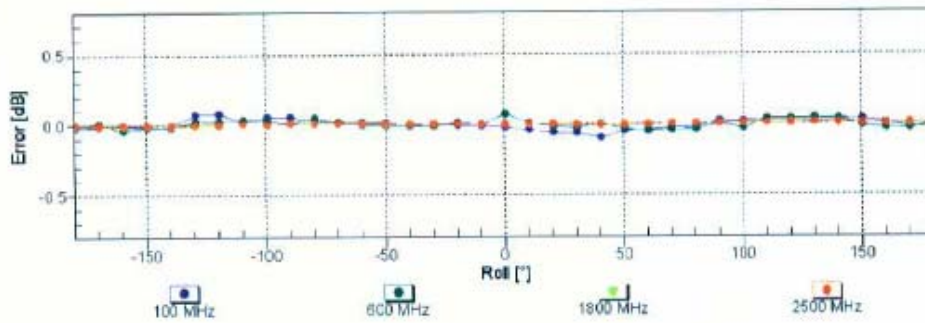
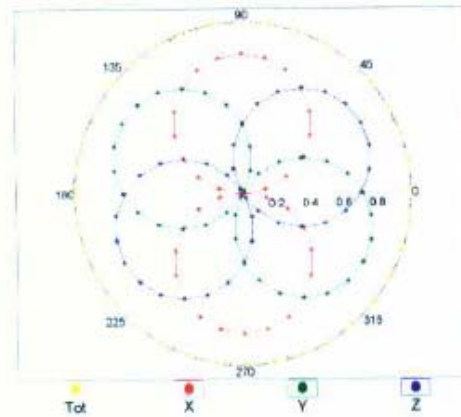
September 16, 2013

Receiving Pattern (ϕ), $\theta = 0^\circ$

f=600 MHz,TEM



f=1800 MHz,R22



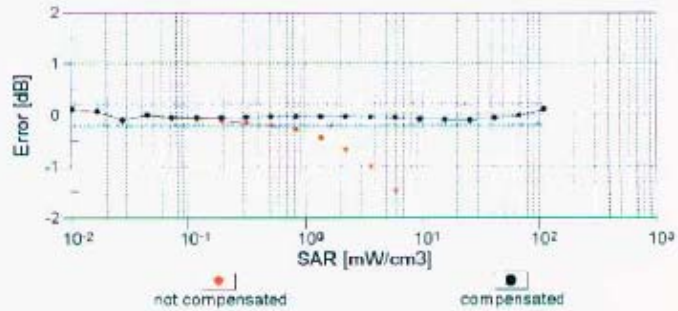
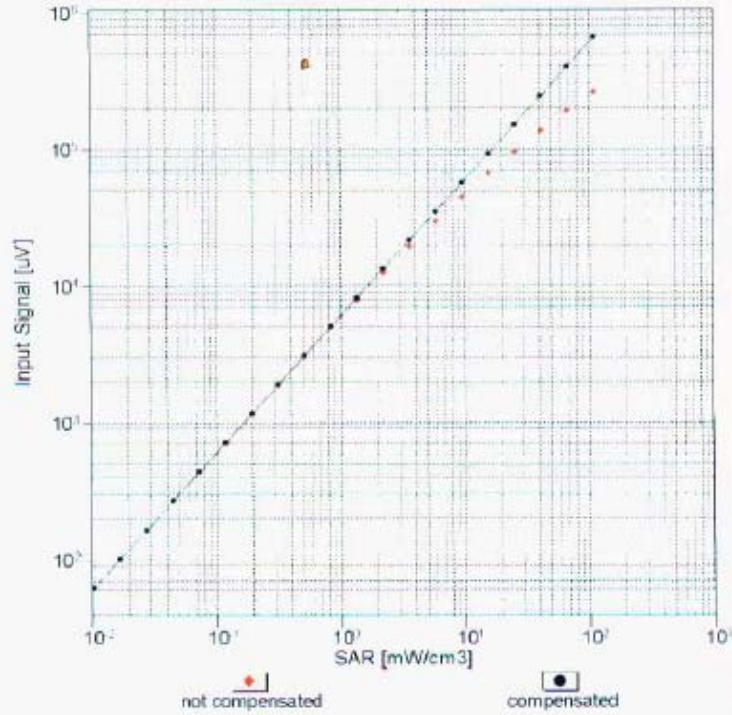
Uncertainty of Axial Isotropy Assessment: $\pm 0.5\%$ (k=2)



EX3DV4- SN:3932

September 16, 2013

Dynamic Range $f(\text{SAR}_{\text{head}})$ (TEM cell, $f = 900 \text{ MHz}$)

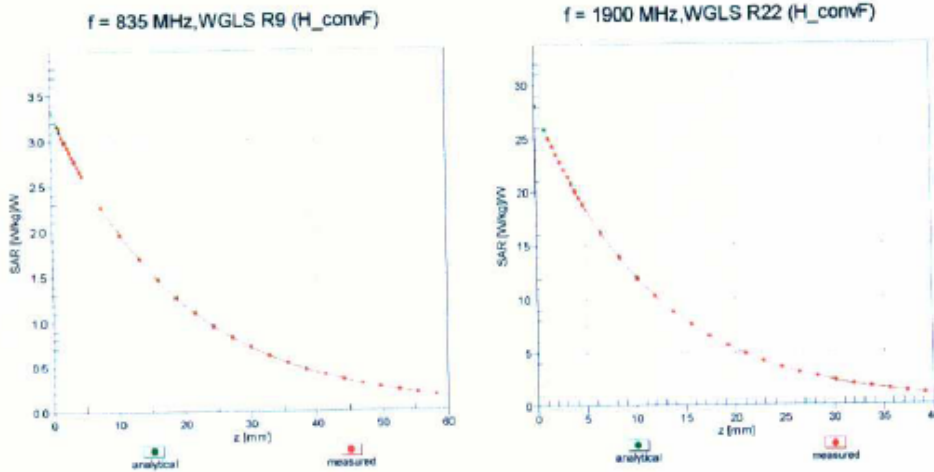


Uncertainty of Linearity Assessment: $\pm 0.6\%$ ($k=2$)

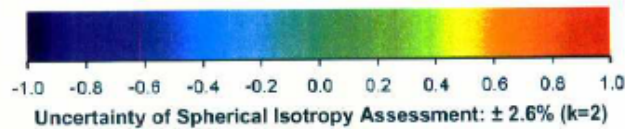
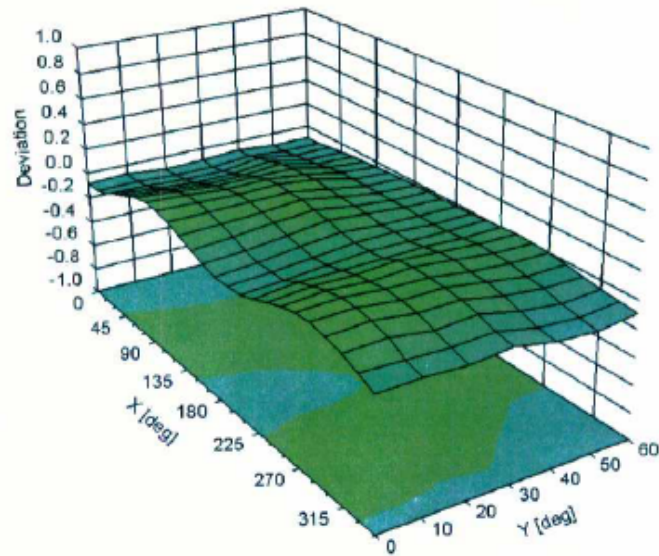
EX3DV4- SN:3932

September 16, 2013

Conversion Factor Assessment



Deviation from Isotropy in Liquid Error (ϕ, θ), f = 900 MHz





EX3DV4- SN:3932

September 16, 2013

DASY/EASY - Parameters of Probe: EX3DV4 - SN:3932

Other Probe Parameters

Sensor Arrangement	Triangular
Connector Angle (°)	-109.5
Mechanical Surface Detection Mode	enabled
Optical Surface Detection Mode	disabled
Probe Overall Length	337 mm
Probe Body Diameter	10 mm
Tip Length	9 mm
Tip Diameter	2.5 mm
Probe Tip to Sensor X Calibration Point	1 mm
Probe Tip to Sensor Y Calibration Point	1 mm
Probe Tip to Sensor Z Calibration Point	1 mm
Recommended Measurement Distance from Surface	2 mm