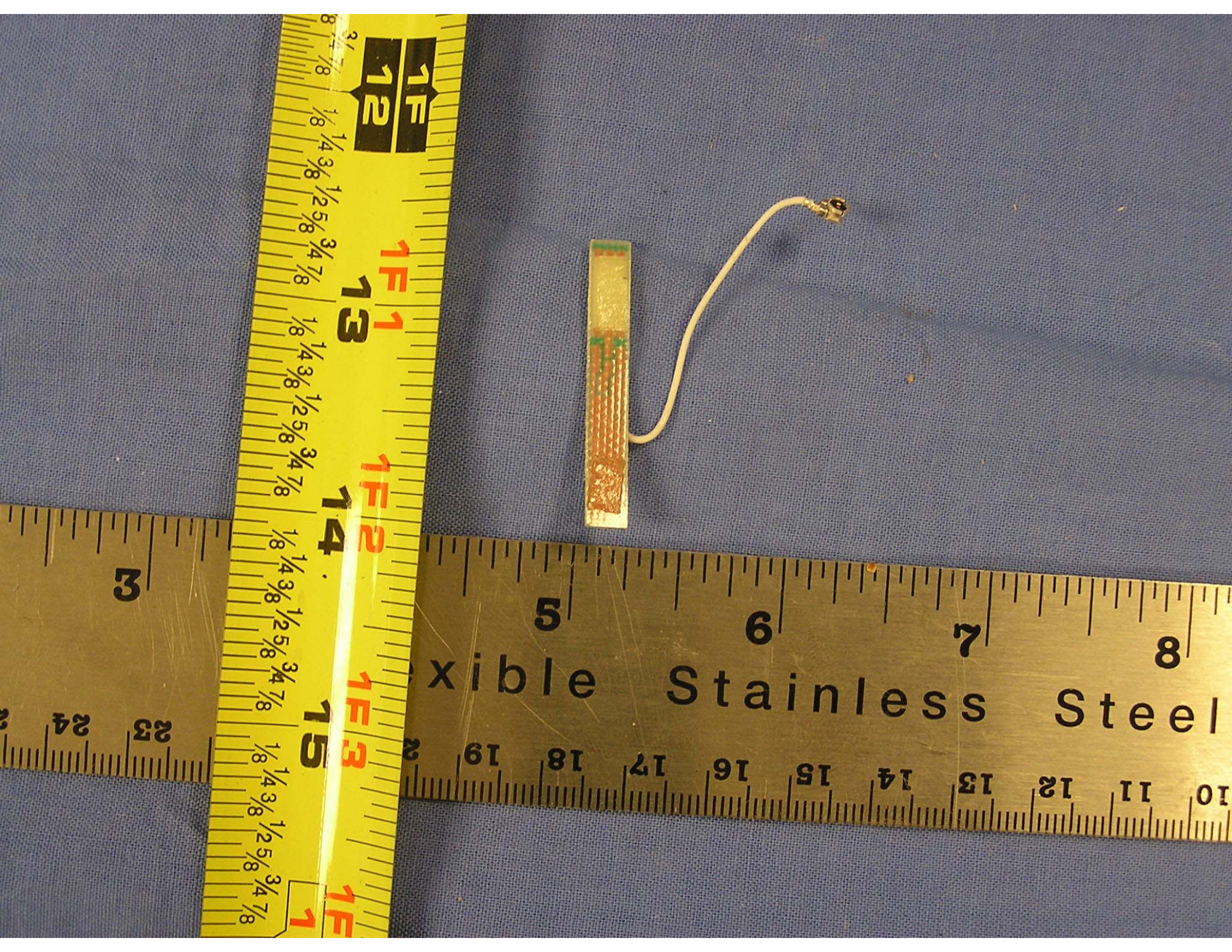
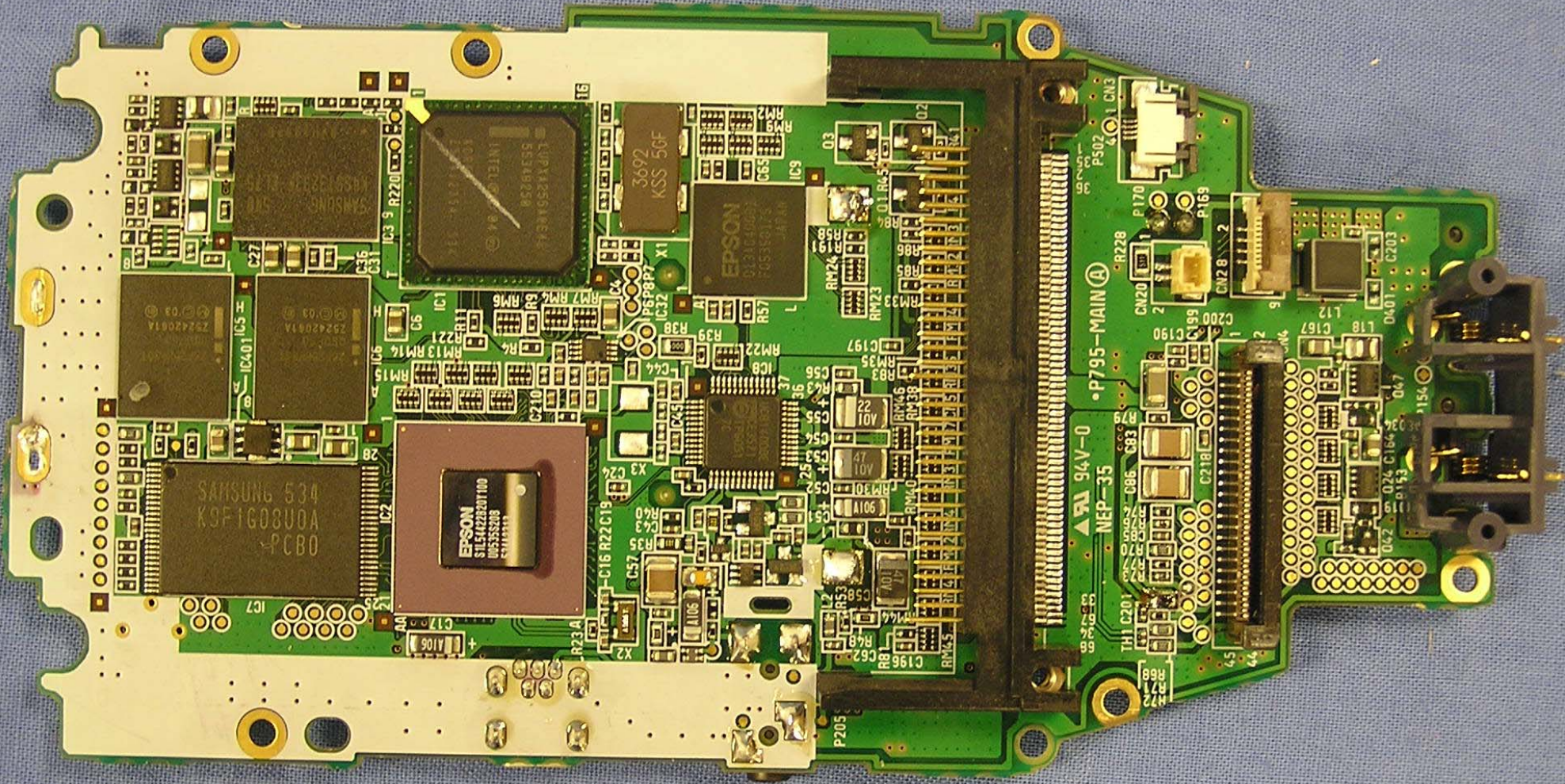
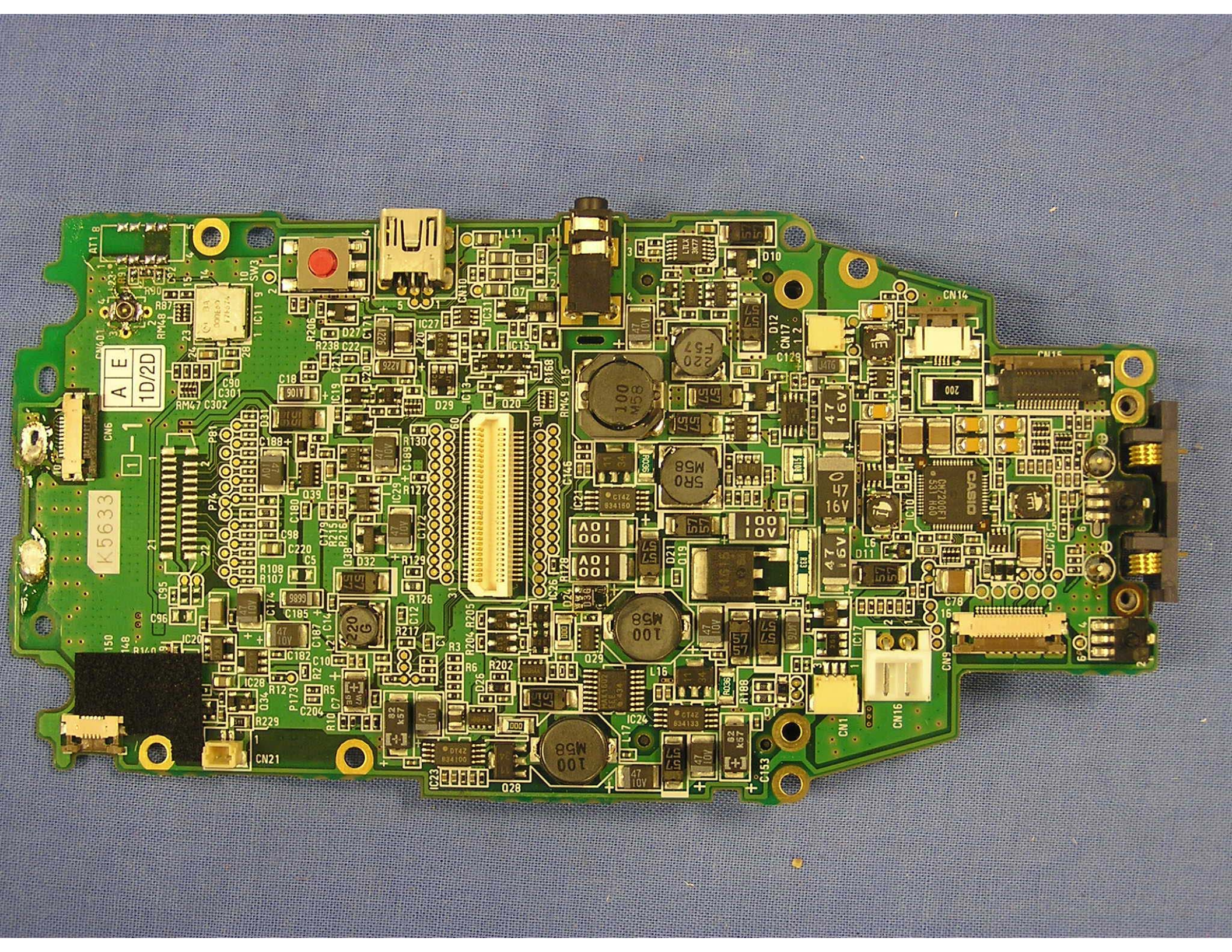


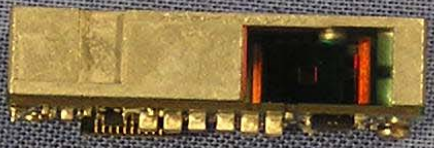
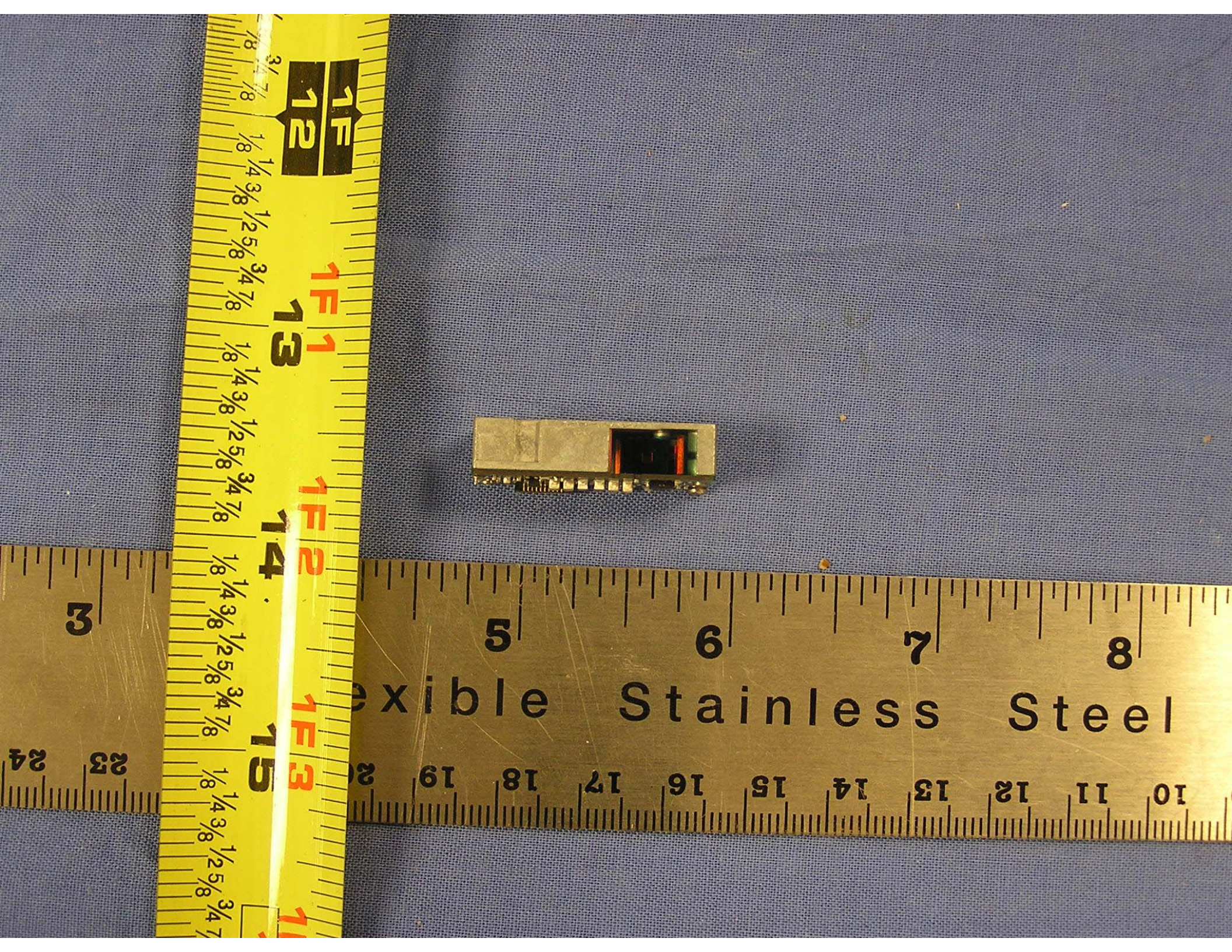
12 13 14 15
1F 1F 1F 1F
1/8 1/4 3/8 1/2 5/8 3/4 7/8
1/8 1/4 3/8 1/2 5/8 3/4 7/8
1/8 1/4 3/8 1/2 5/8 3/4

3 5 6 7 8
Flexible Stainless Steel
10 11 12 13 14 15 16 17 18 19 20 21 22 23 24









1/8 3/8 1/4 1/2 5/8 3/4 7/8
12 13 14 15
1E 1E 1E 1E
1E 1E 1E 1E

3 5 6 7 8
Flexible Stainless Steel
10 11 12 13 14 15 16 17 18 19 20
23 24

