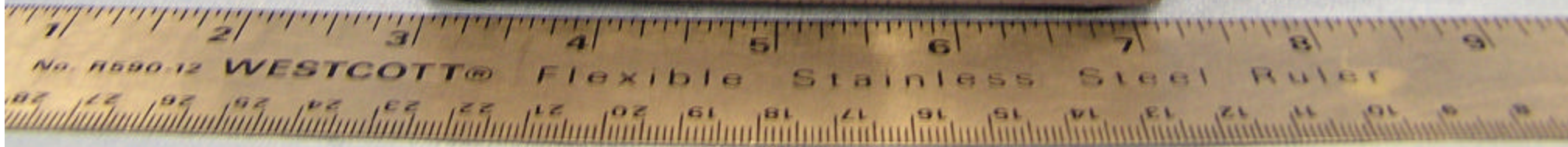


Cradle Charger.1





QAS10
OSTI 3440
OSTI 3441
OSTI 3442
3rd



TEST EQUIPMENT

S/N 01534

DC IN 12V



Cradle Charger.2



No. R590-12 WESTCOTT® Flexible Stainless Steel Ruler

TEST EQUIPMENT
S/N 01552

DC IN 12V



C-OUT C-IN

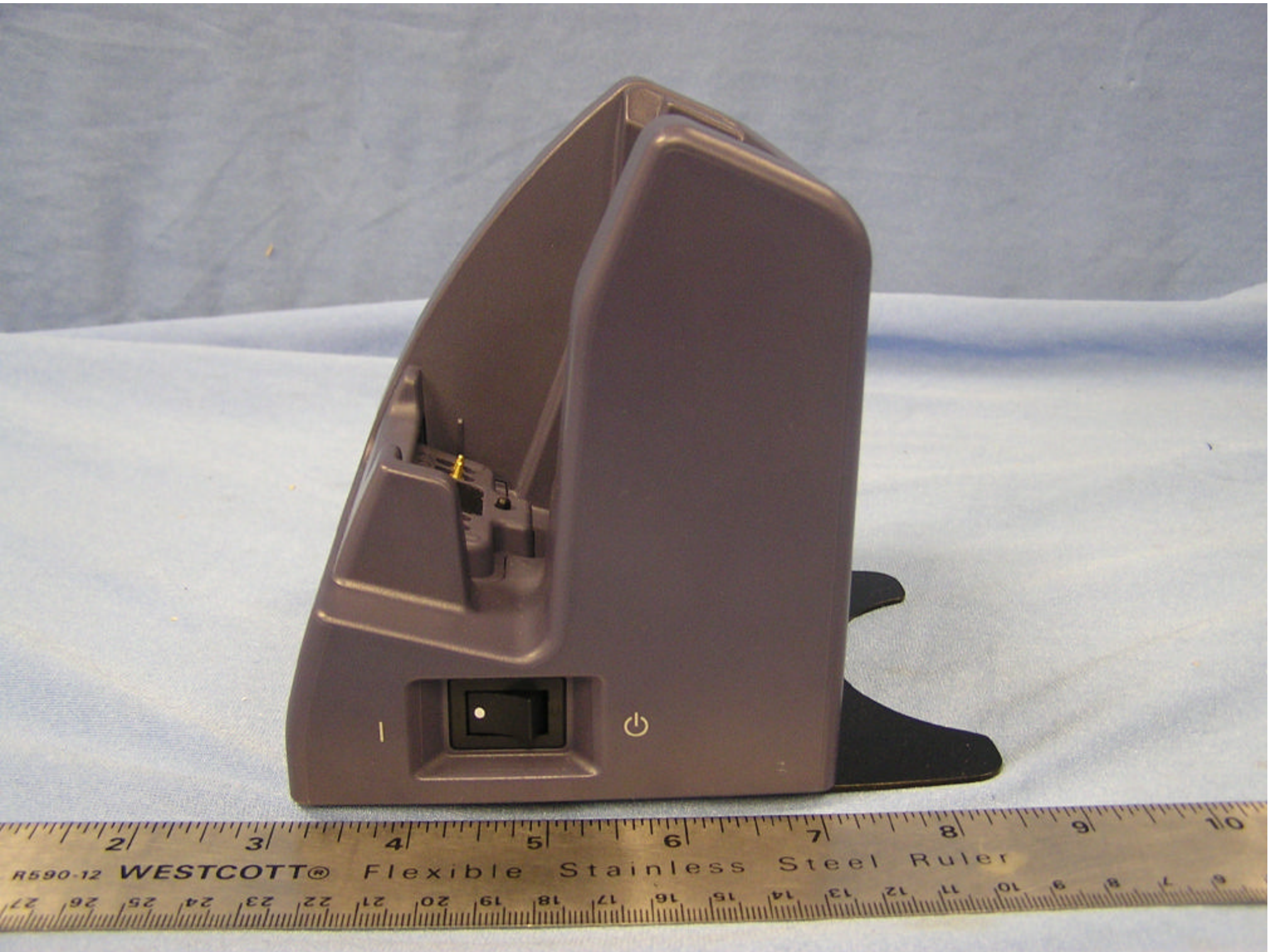


RS-232C



CAUTION - Do not connect to Telephone line.





Dual Charger



CASIO® DT-5022CHG

INPUT 16V \equiv 2.4A, OUTPUT 4.2V \equiv 1.8A
USE AC ADAPTOR TYPE MPC-577ADP SERIES or MPC-177ADP
For details, refer to Hardware Manual.

9628
I.T.E.

SERIAL NO.

000001



MADE IN JAPAN
CASIO COMPUTER CO.,LTD.

This device complies with Part 15 of the FCC Rules.
Operation is subject to the following two conditions:
(1) This device may not cause harmful interference, and
(2) this device must accept any interference received,
including interference that may cause undesired operation.

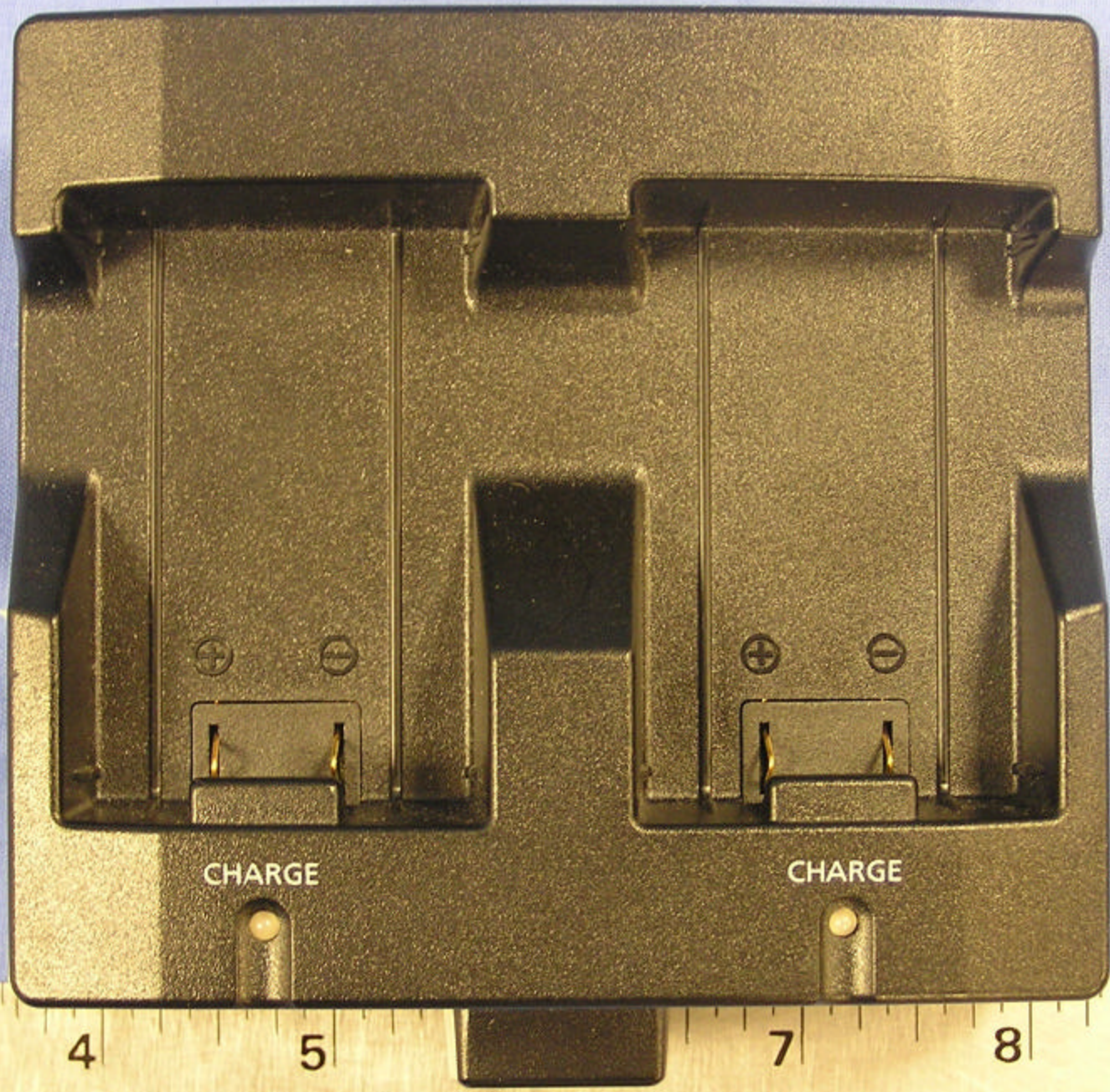
⚠ WARNING

- Use only the AC adaptor specified for this charger.
- Never try to charge batteries other than those specified for this charger.
- Never allow (+) and (-) charger terminals to become shorted.
- Do not allow the charger to become wet and never touch it with wet hands.

⚠ 警告

- 必ず指定のACアダプタを使用してください。
- 指定された電池以外は使用しないでください。
- (+)(-)端子をショートさせないでください。
- ぬらしたり、ぬれた手で触らないでください。

STCOTT® Flexible Stainless Steel Ruler

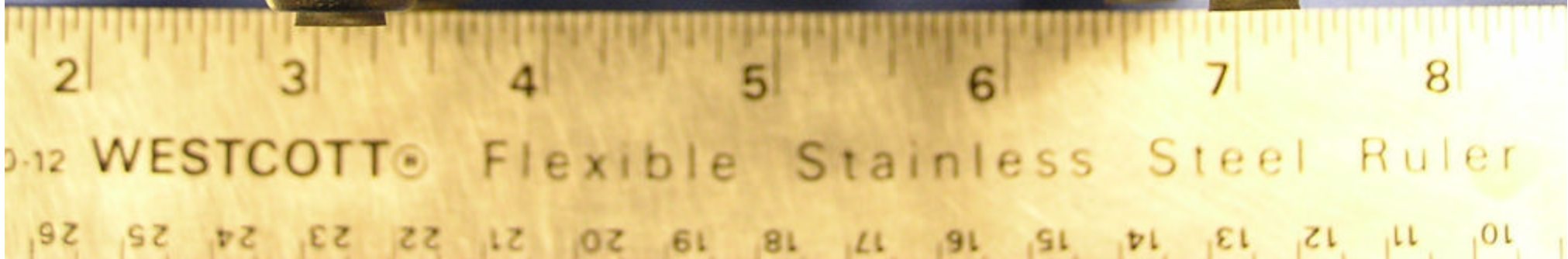


CHARGE

CHARGE

STCOTT® Flexible Stainless Steel Ruler

AC ADAPTOR



Battery Packs



CASIO® DT-5025LBAT
Li-ion 3.7V 3400mAh

⚠ DANGER

Never dispose of the battery by incineration and never expose it to heat. Never try to take the battery apart or otherwise try to modify it. Never allow (+) and (-) battery terminals to become shorted. For details, refer to Hardware Manual.

⚠ 危険

・火の中に投入したり過熱しないでください。E200833
・分解・改造をしないでください。
・電池の(+)(-)端子をショートさせないでください。

PA®

CASIO COMPUTER CO., LTD. MADE IN JAPAN

TT® Flexible Stainless Steel Ruler