

# RICOH

FCC ID : BBP-WLRWL541  
IC Number : 144D-WLRWL541  
Model : R-WL54MN / R-WL54CN  
Applicant : RICOH COMPANY, LTD.

Date: December 14, 2007

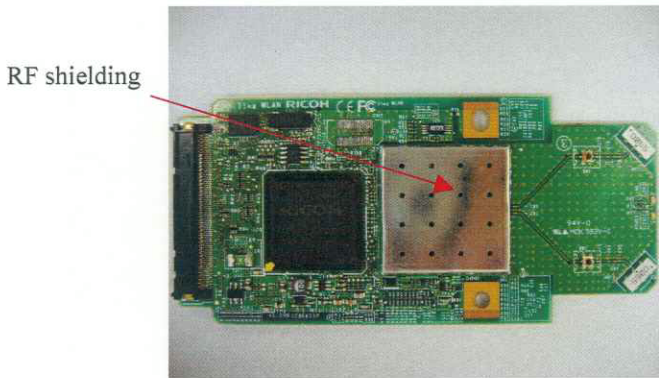
## Request for Modular Approval

The Option(s) of Radiocommunications (Model: R-WL54MN / R-WL54CN) is designed by RICOH COMPANY, LTD.. This modular transmitter will be equipped and used only in Printer, which is produced by RICOH COMPANY, LTD. or the manufacturer consigned the production by RICOH COMPANY, LTD.

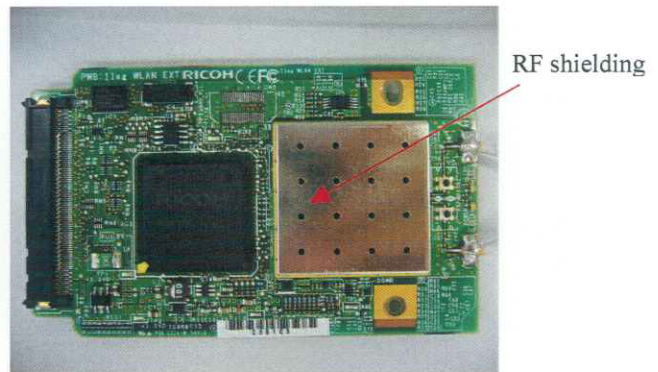
The modular transmitter complies the module basic requirement (Item 1 to 8) in FCC Public Notice: Part 15 Unlicensed Modular Transmitter Approval (DA00-1407) [FCC Part 15 Subpart C Section 15.212] and Canada RSS-Gen, Issue 2, 7.1.1 as indicated below:

### **[Module basic requirement]**

(1) Have its own RF shielding: This modular transmitter has its own RF shielding. Please refer to the following Photos;



R-WL54CN



R-WL54MN

- (2) The modular transmitter must have buffered modulation/data inputs: Data input to this modular transmitter is controlled as not generating excessive data speed and abnormal modulation.
- (3) The modular transmitter must have its own power supply regulation: This module has a power supply regulating circuit (power supply regulation) inside the IC, and regulated at DC2.8V. 3.3V is input from CN1 (RHM-88R-SSK01-1), and 2.9V, 2.8V and 3.3V are supplied into the module via the regulators made by Ricoh.
- (4) The modular transmitter must comply with the antenna requirements of Section 15.203 and 15.204(c): It is impossible for end users to replace the antenna, because the antenna of the modular transmitter (R-WL54CN) is mounted on the circuit board of the module and the external antenna of R-WL54MN is soldered to the circuit board of the module directly. Therefore, the equipment complies with the antenna requirement of Section 15.203.
- (5) The modular transmitter must be tested in a stand alone: The test has been performed as a stand alone. Please refer to the Test Report.
- (6) The modular transmitter must be labeled with its own FCC ID/IC No., and, if the FCC ID/IC No. are not visible when the module is installed inside another device, then the outside of the device into which the module is installed must also display a label referring to the enclosed module: This modular transmitter is complied with this requirement. Please refer to the Label drawing and location. In addition, the final product will display FCC ID/IC No. of the module.
- (7) The modular transmitter must comply with any specific rule or operating requirements applicable to the transmitter and the manufacturer must provide adequate instructions along with the module to explain any such requirements: The necessary explanation to be complied with this requirement is contained in the manual.
- (8) The modular transmitter must comply with any applicable RF exposure requirements: Please refer to the RF Exposure Statement.

Seiji Nakamura  
Sub-Leader