

4. Adding Toner and Staples

This chapter explains how to replenish toner and staples when they run out.

Adding Toner

This section describes how to replace toner.

WARNING

- Do not incinerate used toner or toner containers. Toner dust might ignite when exposed to an open flame. Dispose of used toner containers in accordance with local regulations.

CAUTION

- Keep toner (used or unused) and toner containers out of reach of children.

CAUTION

- If toner or used toner is inhaled, gargle with plenty of water and move into a fresh air environment. Consult a doctor if necessary.

CAUTION

- If toner or used toner gets into your eyes, flush immediately with large amounts of water. Consult a doctor if necessary.

CAUTION

- If toner or used toner is swallowed, dilute by drinking a large amount of water. Consult a doctor if necessary.

CAUTION

- Avoid getting toner on your clothes or skin when removing a paper jam or replacing toner. If your skin comes into contact with toner, wash the affected area thoroughly with soap and water.
- If toner gets on your clothing, wash with cold water. Hot water will set the toner into the fabric and may make removing the stain impossible.

CAUTION

- Do not open toner containers forcefully. Toner can spill, dirtying your clothes or hands, and possibly resulting in accidental ingestion.

★ Important

- Always add toner when the machine instructs you.
- Fault may occur if you use toner other than the recommended type.
- When adding toner, do not turn off the operation switch. If you do, settings will be lost.
- Do not repeatedly install and remove toner cartridges. This will result in toner leakage.
- Do not shake the removed toner cartridge. Remaining toner might scatter.

↓ Note

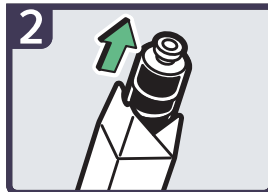
- If the message "🔔Check toner cartridge replacement(s)." appears, the toner has almost run out. Have a replacement toner cartridge at hand.
- You can check name of the required toner name and the replacement procedure using the "🔔Add Toner" screen.
- Press [System Status] to check contact number where you can order supplies. See "Checking Machine Status and Settings", Troubleshooting 📄🔍.
- You can add all four color toners in the same way.

Replacing Toner

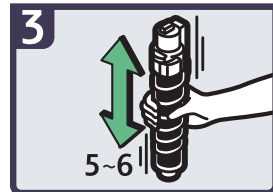
This section describes how to remove toner.



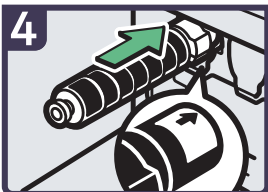
- Open the front cover of the machine.
- Pull out the toner cartridge slowly.



- Take out the new toner cartridge from the box.



- Hold the toner cartridge and shake it five or six times.



- Check the orientation of the toner cartridge and insert it carefully.
- Close the front cover of the machine.

BHL001S

Sending Faxes or Scanned Documents When Toner Has Run Out

When the machine has run out of toner, the indicator on the display lights. Note that even if there is no toner left, you can still send faxes or scanned documents.

★ Important

- If number of communications executed after the toner has run out and not listed in the automatically output Journal exceeds 200, communication is not possible.

1. Make sure the machine is in facsimile or scanner mode.
2. Press [Exit], and then perform transmission operation.

The error message disappears.

↓ Note

- Any reports are not printed.
- If the fax or scanner screen does not appear in step 1, press the [Facsimile] key or the [Scanner] key.

Used Toner

Toner cannot be re-used.

Bring the stored used container to your sales representative or service representative for recycling through our recycling system. If you discard it on your own, treat it as general plastic waste material.

Adding Staples

This section describes what to do when staples need replacing.

CAUTION

- Keep your hands clear of the booklet finisher tray when pulling out or pushing in the finisher's staple unit. You can trap your fingers if you do not.

Important

- Stapling failures or jams may occur if you use a staple cartridge other than that recommended.

Note

- If you cannot pull out the upper unit, there are staples remaining inside the cartridge. Use all the staples, and do not add more.
- Refill the stapler according to the finisher type. Check the type if you are unsure. For details about type of finisher, see "Appendix".

Reference

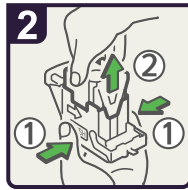
- p.141 "Appendix"

Finisher SR3010

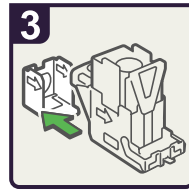
This section describes how to add staples to the Finisher SR3010.



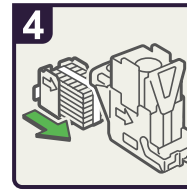
- Open the finisher front cover.
- Hold the lever, and then gently pull out the cartridge.



- Holding both side of the cartridge, pull up the upper unit.



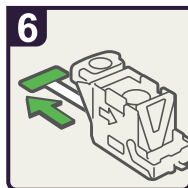
- Remove the empty refill in the direction of the arrow.



- Push the new refill into the cartridge until it clicks.



- Push the upper unit gently into the cartridge.



- Pull out the ribbon.

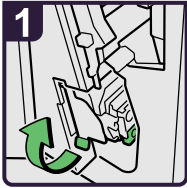


- Hold the lever, and then push in the cartridge until it clicks.
- Close the finisher front cover.

BBT023S

Finisher SR790

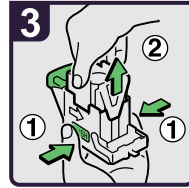
This section describes how to add staples to the Finisher SR790.



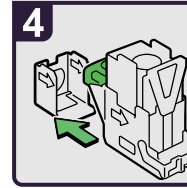
· Open the finisher front cover, and then pull out the staple unit.



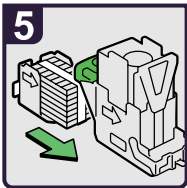
· Hold the lever, and then gently pull out the cartridge.



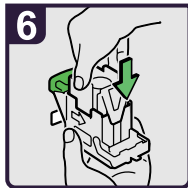
· Holding both side of the cartridge, pull up the upper unit.



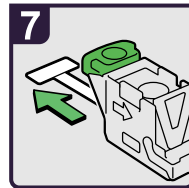
· Remove the empty refill in the direction of the arrow.



· Push the new refill into the cartridge until it clicks.



· Push the upper unit gently into the cartridge.



· Pull out the ribbon.



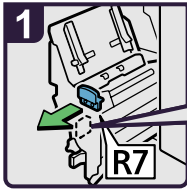
· Hold the green lever, and then push in the cartridge until it clicks.

· Return the staple unit to its original position, and then close the finisher front cover.

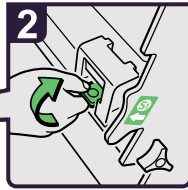
BBT024S

Booklet Finisher SR3000

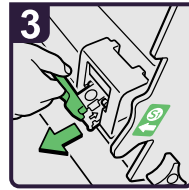
This section describes how to add staples to the Booklet Finisher SR3000.



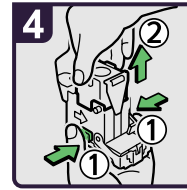
1 · Open the finisher front cover, and then pull out the staple unit.



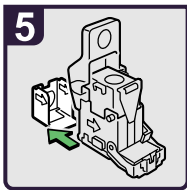
2 · Hold the lever and pull it up.



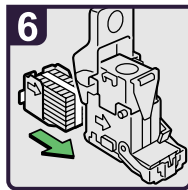
3 · Pull out the cartridge gently.



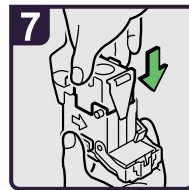
4 · Holding both side of the cartridge, pull up the upper unit.



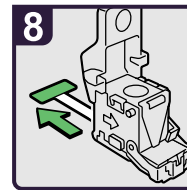
5 · Remove the empty refill in the direction of the arrow.



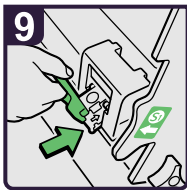
6 · Push the new refill into cartridge until it clicks.



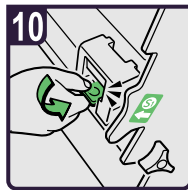
7 · Push the upper unit gently into the cartridge.



8 · Pull out the ribbon.



9 · Push in the cartridge gently.

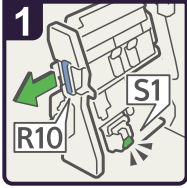


10 · Hold the lever and hold it down until it clicks.
· Return the staple unit to its original position, and close the finisher front cover.

BBT025S

Booklet Finisher SR3020

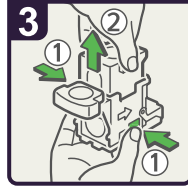
This section describes how to add staples to the Booklet Finisher SR3020.



- Open the finisher front cover.
- Pull out the staple unit.



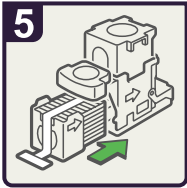
- Pull out the cartridge gently.



- Holding both sides of the cartridge, pull up the upper unit.



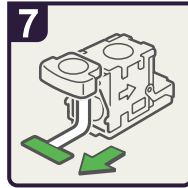
- Remove the empty refill in the direction of the arrow.



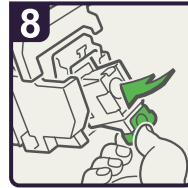
- Push the new refill into the cartridge until it clicks.



- Push the upper unit gently into the cartridge.



- Pull out the ribbon.

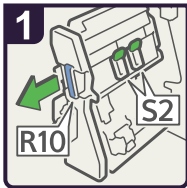


- Push the cartridge down until it clicks.
- Return the staple unit to its original position and close the finisher front cover.

BAZ034S

Booklet Finisher SR3020

This section describes how to add staples to the Booklet Finisher SR3020.



- Open the finisher front cover.
- Pull out the staple unit.



- Pull lever S2.



- Pull out the cartridge gently.



- Holding both sides of the cartridge, pull up the upper unit.



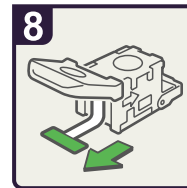
- Remove the empty refill in the direction of the arrow.



- Push the new refill into the cartridge until it clicks.



- Push the upper unit gently into the cartridge.



- Pull out the ribbon.



- Push the cartridge down until it clicks.



- Return lever S2 to its original position.
- Return the staple unit to its original position and close the finisher front cover.

4

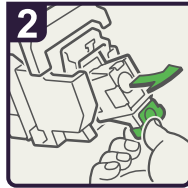
BAZ035S

Finisher SR3030

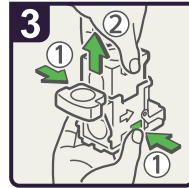
This section describes how to add staples to the Finisher SR3030.



- Open the finisher front cover.
- Pull out the staple unit.



- Pull out the cartridge gently.



- Holding both sides of the cartridge, pull up the upper unit.



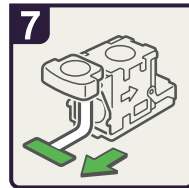
- Remove the empty refill in the direction of the arrow.



- Push the new refill into the cartridge until it clicks.



- Push the upper unit gently into the cartridge.



- Pull out the ribbon.



- Push the cartridge down until it clicks.
- Return the staple unit to its original position and close the finisher front cover.

BAZ033S

Replacing the Stamp Cartridge

If the transmission stamp becomes faint, replace the cartridge.

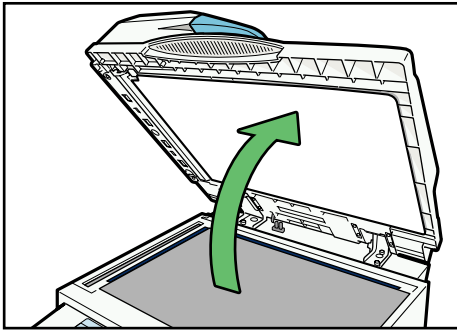
★ Important

- This stamp cartridge is used for facsimile and scanner functions.
- Do not add ink to the cartridge by yourself. Neglecting this can cause ink leakage.
- Be sure not to dirty your fingers with ink from the cartridge.
- Use the cartridge specified for this machine.

Replacing the Stamp Cartridge (Type 1, 2)

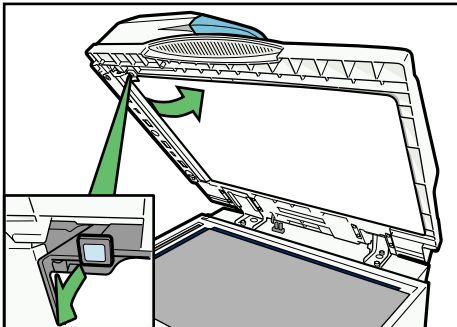
4

1. Open the ADF unit.



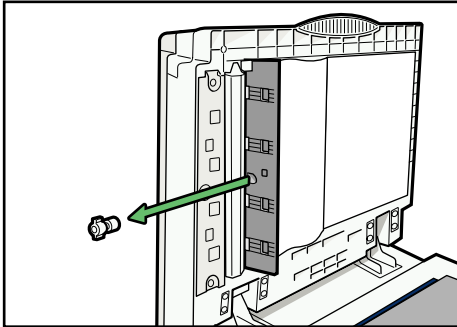
BBT007S

2. Open the stamp cover.



BBT008S

3. Pull out the old stamp cartridge.

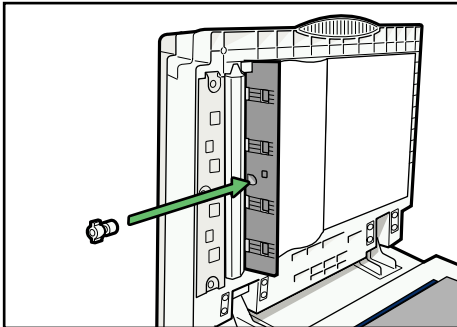


BBT009S

4

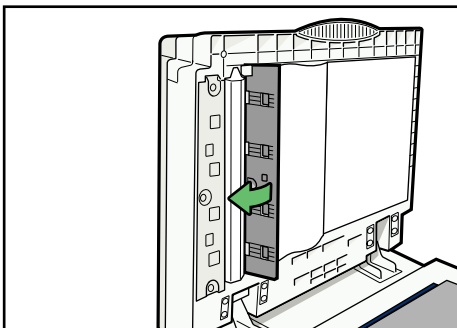
4. Insert the new stamp cartridge.

Insert the cartridge until the metal parts are no longer visible.



BBT010S

5. Close the stamp cover.

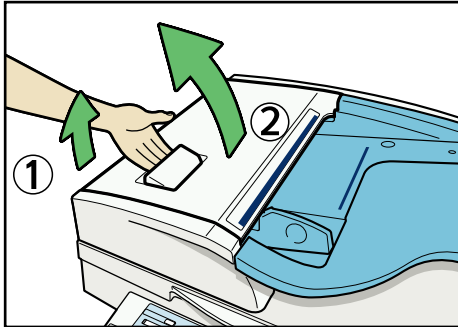


BBT011S

6. Close the ADF unit.

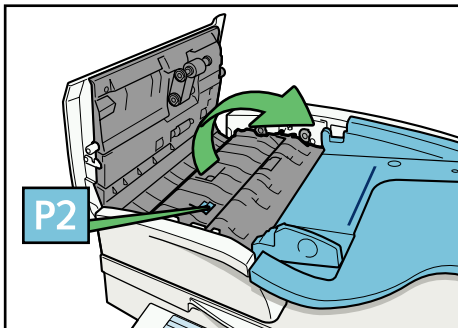
Replacing the Stamp Cartridge (Type 3, 4)

1. Open the ADF cover.



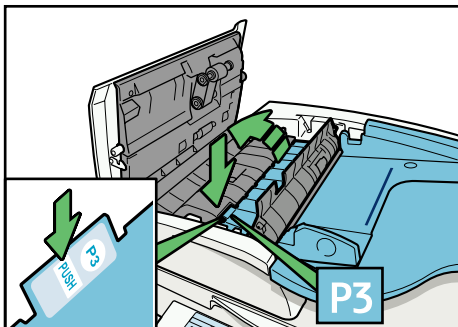
BBR012S

2. Raise lever P2, and then pull open cover P2.



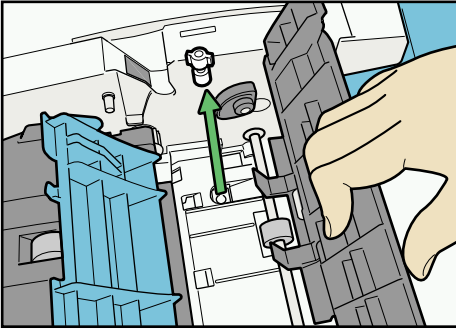
BBR013S

3. Push on the area of cover P3 marked "PUSH", and then open the cover P3.



BBR014S

4. Pull out the old stamp cartridge.

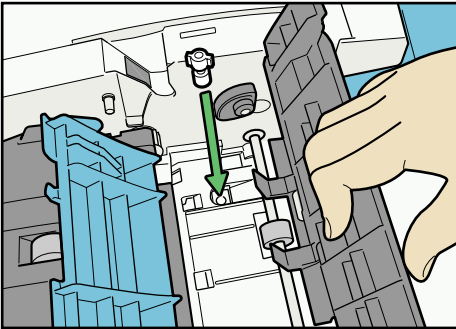


BBR015S

4

5. Insert the new stamp cartridge.

Push in the cartridge until the metal parts are no longer visible.



BBR016S

6. Close cover P3, P2, and the ADF cover.

5. Entering Text

This chapter describes how to enter characters.

Entering Text

This section explains how to enter text.

When you enter a character, it appears at the position of the cursor. If there is a character already at the cursor position, the entered character appears before that.

Available Characters

This section explains which characters are available.

You can enter the following characters:

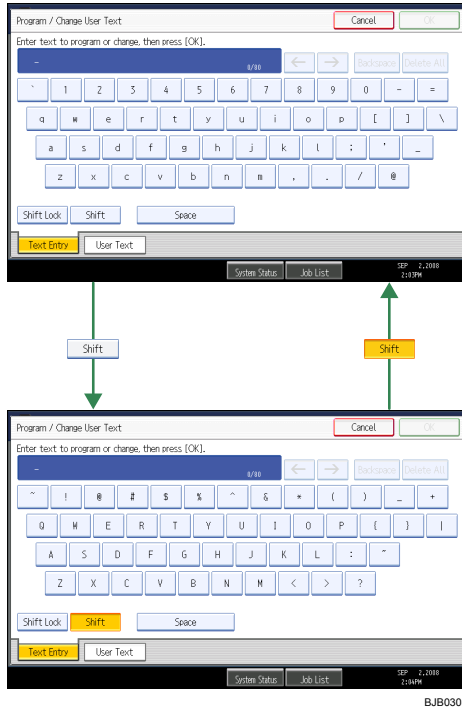
- Alphabetic characters
- Symbols
- Numerals

0123456789

Keys

This section explains the entry screen and the keys displayed on it.

You can change the entry screen using the keys below.



5

Note

- When entering uppercase or lowercase letters continuously, use [Shift Lock] to lock the case.
- You can also use the number keys to enter numbers, regardless of mode.

How to Enter Text

This section explains text entry more specifically.

Entering letters

This section explains how to enter letters.

1. Press [Shift] to switch between uppercase and lowercase.
2. Press the letters you want to enter.


Deleting characters

This section explains how to delete characters.

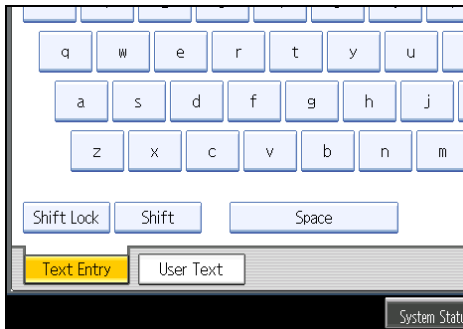
1. Press [Backspace] or [Delete All] to delete characters.

Adding user text

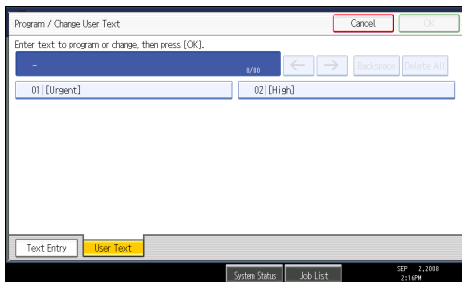
You can select and use a User Text that is registered in [Program / Change / Delete User Text].

For the registration procedure under Program / Change / Delete User Text, see “System Settings”, Network and System Settings Guide .

1. Press [User Text].



2. Select the User Text you want to use.




6. Operating Instructions

This chapter describes the Operating Instructions of this machine.

Installing Operating Instructions

The supplied “Manuals” and “Manuals for Administrators” CD-ROMs contain HTML format manuals. For easy access, we recommend you install the manuals on a computer.

★ Important

- The “Manuals for Administrators” CD-ROM that includes Security Reference  is for administrators of the machine.
 - The system requirements for installing the manuals are as follows:
 - Operating system: Windows 2000/XP/Vista, Windows Server 2003 or 2003 R2
 - Minimum display resolution: 800 × 600 pixels
 - Recommended browsers:
 - Microsoft Internet Explorer 4.01 SP2 or later
 - Netscape 6.2 or later
 - Non-recommended browsers can display the simplified manual only.
 - HTML manuals can also be viewed on a Macintosh.
 - Hyperlinks might not work and referenced sections might not appear unless all the HTML manuals have been installed. To display referenced sections, be sure to install all the HTML manuals.
1. Select a language and a product, and then click [OK].
 2. Click [Install Manuals].
If you want to read manuals from the CD-ROM, click [Read HTML manuals] or [Read PDF manuals].
 3. Install the manual you require according to the displayed instructions.
 4. When installation is complete, click [Finish].
 5. Click [Finish].

↓ Note

- If you cannot install a manual, copy the “MANUAL_HTML” folder to your computer's hard drive, and then run “Setup.exe”.
- To delete an installed manual, on the [Start] menu, click [Programs], then [Product Name], and then uninstall the data.
- If you are installing the manuals on a Macintosh, open the “Manuals.htm” file on the CD-ROM.

PDF Manuals

The supplied “Manuals” CD-ROM contains PDF manuals.

File path

The PDF manuals are in the following folder on the CD-ROM:

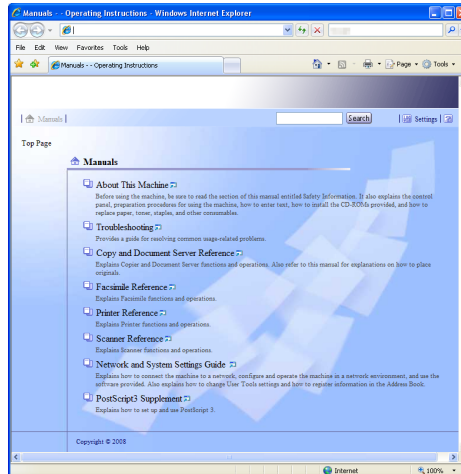
MANUAL_PDF\ENGLISH

↓ Note

- To view the PDF manuals, you need to have Adobe Acrobat Reader/Adobe Reader installed on your computer.

How to Use the Operating Instructions

This section explains how to use manuals.



6

Opening from the Icon

This section explains how to open a manual using its desktop icon.

1. Double-click the icon on your desktop.



The browser opens and the manual appears.

Opening from the [Start] Menu

This section explains how to open a manual from the [Start] menu.

1. On the [Start] menu, point to [Programs] (Windows XP: [All Programs]), then [Product Name], and then click the manual you want to view.

The browser opens, and then the manual appears.

↓ Note

- Depending on the settings made during installation, menu folder names may differ.

Opening from the CD-ROM

This section explains how to open a manual from the supplied "Manuals" and "Manuals for Administrators" CD-ROMs.

1. Click [Read HTML manuals].
2. Click the title of the manual you want to view.

The browser opens, and then the manual appears.

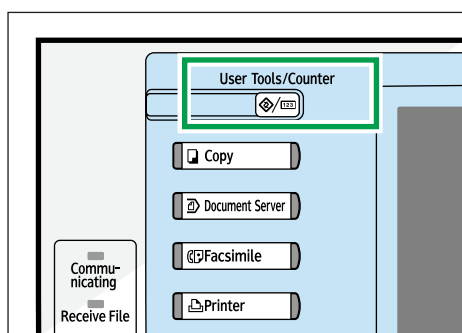
7. Other User Tools

Initial settings allow you to switch the language as well as checking the number of printed papers by displaying the counter.

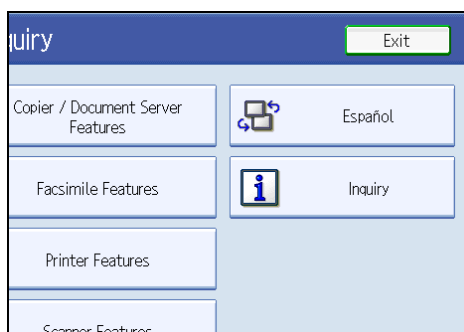
Changing the Display Language

You can change the language used on the display. English is set as default.

1. Press the [User Tools/Counter] key.

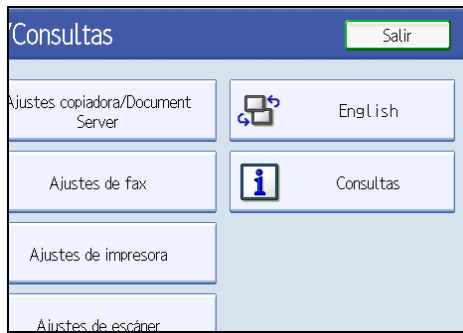


2. Press [Español].



The language is changed to Spanish.

3. Press [Salir].



The menu appears in Spanish.

Inquiry

The Inquiry function lets you check the telephone numbers to contact for repairs, or ordering consumables such as toner. Be sure to contact your service engineer to verify the following:

Consumables

- Telephone No. to order
- Toner
- Staple
- Staple (Center)
- TX Stamp Name

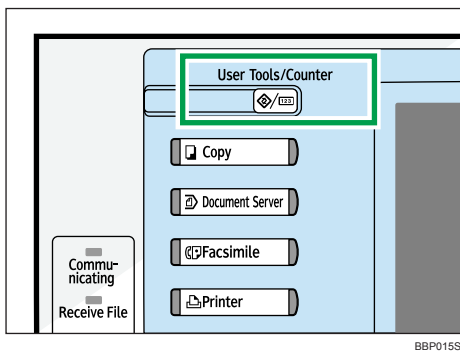
Machine Maintenance/Repair

- Telephone No.
- Serial No. of Machine

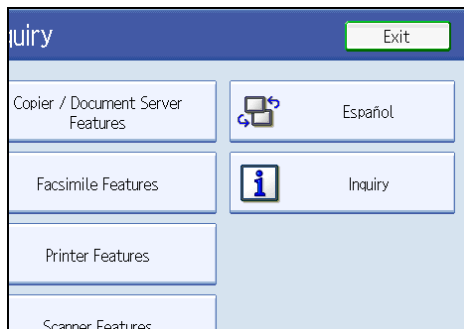
Sales Representative

- Telephone No.

1. Press the [User Tools/Counter] key.

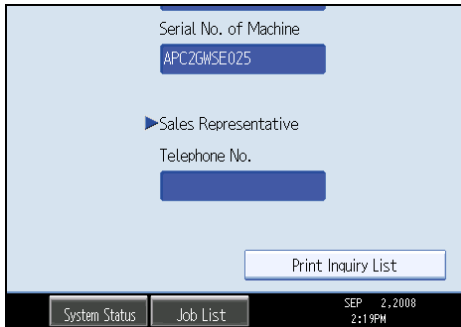


2. Press [Inquiry].



Inquiry information appears.

3. Press [Print Inquiry List].



4. Press the [Start] key.

Inquiry information prints out.

5. Press [Exit] twice.

Changing Paper Thickness Settings

Select [Plain Paper 1] or [Plain Paper 2] depending on the type of plain paper.

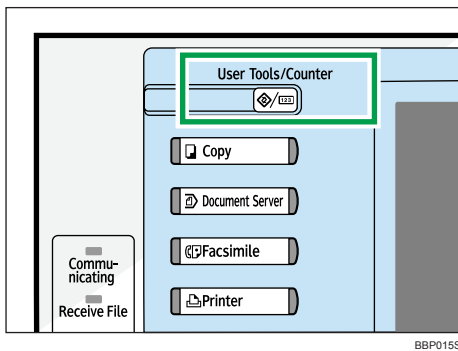
If in System Settings, [Tray Paper Settings], you set "Paper Thickness" to [Plain Paper] for each tray's [Paper Type], you must then select [Maintenance], [Plain Paper Setting] and specify either [Plain Paper 1] or [Plain Paper 2], depending on the thickness of the loaded paper.

The default setting is **Plain Paper 2**.

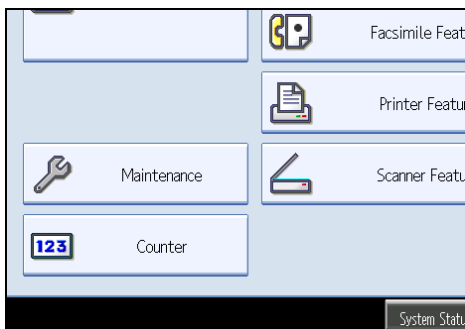
★ Important

- Select [Plain Paper 1] when paper weight is between 60 g/m² (16 lb.) and 74 g/m² (20 lb.).
- Select [Plain Paper 2] when paper weight is between 75 g/m² (20 lb.) and 90 g/m² (21 lb.).

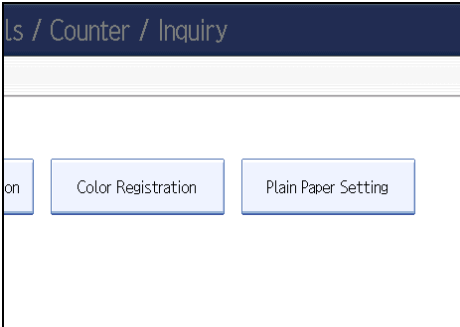
1. Press the [User Tools/Counter] key.



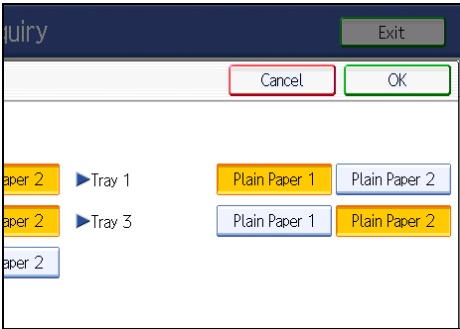
2. Press [Maintenance].



3. Press [Plain Paper Setting].

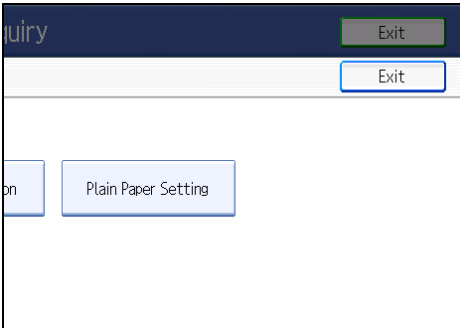


4. Select the plain paper type for each tray depending on the paper to be set and press [OK].



7

5. Press [Exit].



6. Press [Exit].

↓ Note

- In System Settings, [Tray Paper Settings], for each tray's [Paper Type] you can specify [Plain Paper], [Middle Thick], [Thick Paper 1], [Thick Paper 2], or [Thick Paper 3]. For details about paper thickness, see "Recommended Paper Sizes and Types".

📖 Reference

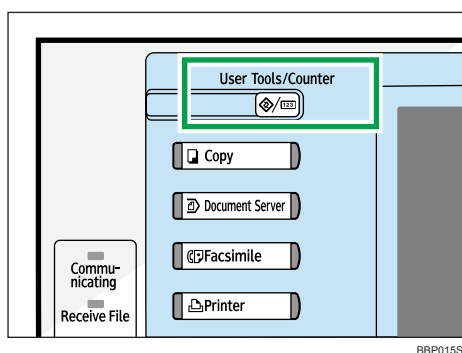
- p.88 "Recommended Paper Sizes and Types"

Counter

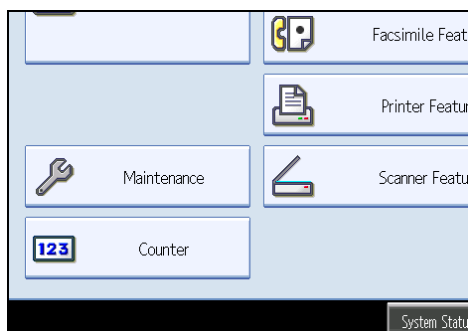
Displaying the Total Counter

You can display the total counter value used for all functions.

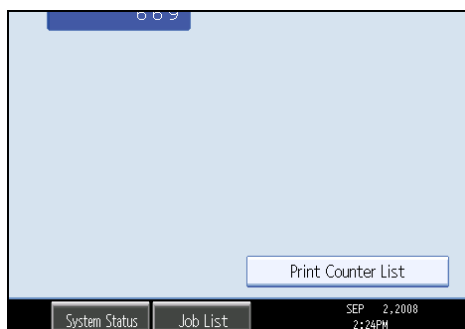
1. Press the [User Tools/Counter] key.



2. Press [Counter].



3. To print a counter list, press [Print Counter List].



4. Press the [Start] key.

A counter list prints out.

8. Remarks

This chapter describes how to maintain and operate the machine.

Dos and Don'ts

The following items should be followed during use of this machine.

WARNING

- Keep the machine away from flammable liquids, gases, and aerosols. A fire or an electric shock might occur.

CAUTION

- Unplug the power cord from the wall outlet before you move the machine. While moving the machine, you should take care that the power cord will not be damaged under the machine.

Important

- Do not turn the power off while the operation switch indicator is lit or blinking. Doing so may damage the hard disk.
- Before unplugging the power cord or turning off the main power switch, make sure remaining memory space is at 100%, as shown on the screen. See "Turning On/Off the Power".
- Do not touch areas on or around the fusing unit. These areas get hot.
- After scanning originals continuously, the exposure glass may become warm - this is not a malfunction.
- The area around the ventilation holes might feel warm. This is caused by exhaust air and is not a malfunction.
- When you use this machine for a long time in a confined space without good ventilation, you may detect an odd smell. To keep the workplace comfortable, we recommend that you keep it well ventilated.
- If the machine is moved from a cold to a warm place, condensation may form inside it. After moving the machine, do not use it for at least an hour. The machine requires this time to adapt to its new environment.
- The machine will malfunction if its internal temperature becomes too high. Be sure not to block the intake and exhaust vents.
- Do not turn off the power while the machine is in operation. See "Turning On/Off the Power".
- Do not open the covers of the machine when it is in operation. If you do, misfeeds might occur.
- Do not move or tilt the machine when the power is on.
- Do not allow small objects such as paperclips to fall into or become stuck inside the machine.

- Do not knock the machine while it is operating (for instance, do not use the machine's surfaces to knock stacks of paper into square).
- Depending on the ambient temperature and humidity, steam may come from the exhaust vent behind the control panel during printing. This is water vapour from the paper, not a sign of malfunction.
- If condensation forms inside the machine as a result of temperature change, the machine may not print properly. To minimize this problem, use the optional anti-condensation heaters.
- Be sure to make a note of the registered machine settings in case they are lost due to accident or malfunction.
- The supplier shall not be liable for any loss or damage resulting from a failure of the machine, loss of settings, or use of the machine.

Reference

- p.73 "Turning On/Off the Power"

Saving Color Copies

This section explains notes on saving color copies.

- Like most prints, color prints will fade if exposed to strong light or dampness and humidity for lengthy periods. Preserve the quality of your copies by storing them in a binder in a dark, dry place.
- Toner may melt if a print and a half-dried print are put on top of each other.
- Toner may also melt when using solvent type adhesive agents for pasting prints.
- When folding prints, toner in the folds will come off.
- Toner may melt if it is placed on mats made of chlorinated plastic in locations of high temperature for long periods of time.
- Toner may melt if prints are placed in places of extremely high temperatures, such as near heaters.

Where to Put Your Machine

This section describes precautions for installation and movement.

Machine Environment

Choose your machine's location carefully.

Environmental conditions greatly affect its performance.

Moving

This section describes precautions when moving the machine.

CAUTION

- Contact your service representative if you need to lift the machine (such as when relocating it to another floor). Do not attempt to lift the machine without the assistance of your service representative. The machine will be damaged if it topples or is dropped, resulting in malfunction and risk of injury to users. The machine's various handling areas are for service engineer use only. Do not touch these areas.

CAUTION

- Before moving the machine, be sure to disconnect all external connections, especially the power cord from the wall outlet. Damaged power cords are a fire and electric shock hazard.

CAUTION

- Unplug the power cord from the wall outlet before you move the machine. While moving the machine, you should take care that the power cord will not be damaged under the machine.

Important

- **Be careful when moving the machine. Take the following precautions:**
 - Turn off the main power. For details about how to turn the main power off, see "Turning On/Off the Power".
 - Unplug the power cord from the wall outlet. When you pull out the plug from the socket, grip the plug to avoid damaging the cord, thereby reducing the risk of fire or electric shock.
 - Close all covers and trays, including the front cover and bypass tray.
 - Keep the machine level and carry it carefully, taking care not to jolt or tip it. Rough handling may cause a malfunction or damage the hard disk or memory, resulting in loss of stored files.
 - Do not take off the holding stand.

- Protect the machine from strong shocks. Impact can damage the hard disk and cause stored files to be lost. As a precautionary measure, files should be copied to another computer.

Reference

- p.73 "Turning On/Off the Power"

Optimum environmental conditions

This section describes precautions when locating the machine.

CAUTION

- Keep the machine away from humidity and dust. Otherwise a fire or an electric shock might occur.
- Do not place the machine on an unstable or tilted surface. If it topples over, an injury might occur.

CAUTION

- After you move the machine, use the caster fixture to fix it in place. Otherwise the machine might move or come down to cause an injury.

CAUTION

- Make sure the room where you are using the machine is well ventilated and spacious. Good ventilation is especially important when the machine is used heavily.

8

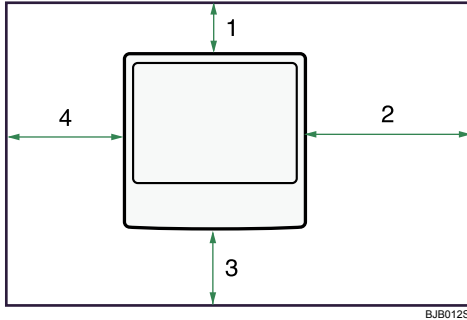
- Temperature: 10-32 °C (50-89.6 °F) (humidity to be 54% at 32 °C, 89.6 °F)
- Humidity: 15-80% (temperature to be 27 °C, 80.6 °F at 80%)
- A strong and level base.
- The machine must be level within 5 mm, 0.2 inch: both front to rear and left to right.
- To avoid possible buildup of ozone, make sure to locate this machine in a large well ventilated room that has an air turnover of more than 30 m³/hr/person.

Environments to avoid

- Locations exposed to direct sunlight or other sources of strong light (more than 1,500 lux).
- Locations directly exposed to cool air from an air conditioner or heated air from a heater. (Sudden temperature changes can cause condensation to form inside the machine.)
- Locations close to machines generating ammonia, such as a diazo copy machine.
- Places where the machine will be subject to frequent strong vibration.
- Dusty areas.
- Areas with corrosive gases.

Access to the machine

Place the machine near the power source, providing the clearance areas shown.



BJB012S

Type 1 and 2

1	Rear	10 cm (4 inches) or more
2	Right	55 cm (21.7 inches) or more
3	Front	75 cm (29.6 inches) or more
4	Left	10 cm (4 inches) or more

Type 3 and 4

1	Rear	10 cm (4 inches) or more
2	Right	60 cm (23.7 inches) or more
3	Front	70 cm (27.6 inches) or more
4	Left	60 cm (23.7 inches) or more

↓ Note

- For the required space when options are installed, contact your service representative.

Power Connection

This section describes power supply.

⚠ WARNING

- Connect the machine only to the power source described on the inside front cover of this manual. Connect the power cord directly into a wall outlet and do not use an extension cord.

⚠ WARNING

- Do not damage, break or make any modifications to the power cord. Do not place heavy objects on it. Do not pull it hard nor bend it more than necessary. These actions could cause an electric shock or fire.

⚠ WARNING

- If the power cord is damaged (exposure of the core, disconnection, etc.), contact your service representative to change a new one. Operating the machine with a damaged power cord may cause an electric shock or fire.

⚠ CAUTION

- When you disconnect the power plug from the wall outlet, always pull the plug (not the cable).

⚠ CAUTION

- To disconnect the power cord, pull it out by plug. Do not drag the cord itself. Doing so may result in damage to the cord, leading to fire or electric shock.
- Make sure the plug is inserted firmly in the wall outlet.
- Voltage must not fluctuate by more than 10%.
- The wall outlet shall be installed near the machine and shall be easily accessible.

Maintaining Your Machine

If the exposure glass, scanning glass, or ADF belt is dirty, copy clarity may be reduced. Clean these parts if they are dirty.

★ Important

- Do not use chemical cleaners or organic solvents, such as thinner or benzene. If such substances get inside the machine or melt plastic parts, a failure might occur.
- Do not clean parts other than those explicitly specified in this manual. Other parts should only be cleaned by your service representative.

How to maintain

Cleaning the machine: Wipe the machine with a soft, dry cloth. If this does not remove the dirt, wipe the machine with a damp and tightly wrung cloth. If a damp cloth still does not remove the dirt, try using a mild detergent. Wipe the machine with a dry cloth to remove the moisture, after using a damp cloth.

Cleaning the Exposure Glass

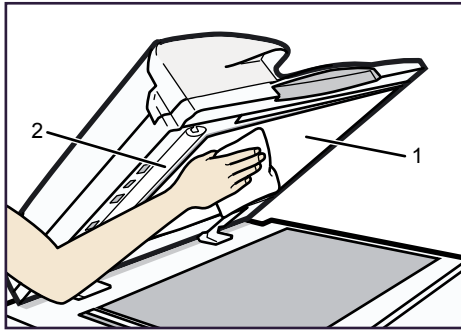
This section describes how to clean the exposure glass and the scanning glass.



Clean 1 and 2.

Cleaning the Auto Document Feeder

This section describes how to clean the ADF.



BJA050S

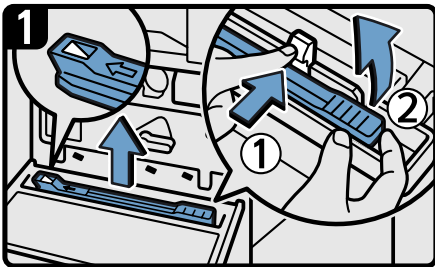
Clean 1 and 2.

Cleaning the Dustproof Glass

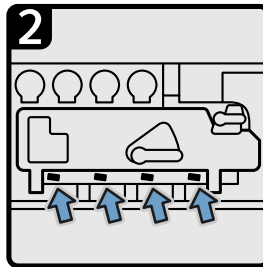
The dustproof glass may require cleaning if white lines appear on the print side of the document.

★ Important

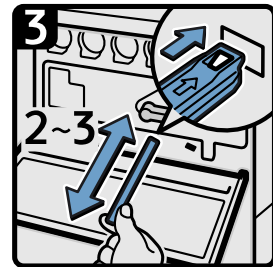
- Do not insert the brush forcefully, or the machine might be damaged.



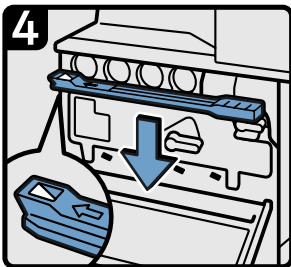
1. Turn off the power switch, and then unplug the power cable.
2. Open the front cover and remove the cleaning brush. Release the catch at the center of the cleaning brush (1), hold the catch to prevent it re-engaging, and then raise the cleaning brush grip (2).



3. There are four holes for cleaning the dustproof glass.



4. Slide the cleaning brush in and out slowly 2 to 3 times to clean all four areas.



5. Return the cleaning brush to its original position, and then close the front cover.
6. Plug in the power cable, and then turn on the power switch.

BJB008S

 **Note**

- Insert the cleaning stick so that its rubber surface is pointing down.

9. Appendix

This chapter describes the provided software and utilities CD-ROMs, specifications, and paper.

Software and Utilities Included on the CD-ROM

This section explains the software and utilities CD-ROMs provided with this machine.

Two CD-ROMs come with this machine: "Printer Drivers and Utilities", and "Scanner Driver and Utilities".

The following are included in these CD-ROMs:

Font Manager

For installing new screen fonts, or organizing and managing fonts already in the system. For details about Font Manager, see the manual on the CD-ROM labeled "Printer Drivers and Utilities".


SmartDeviceMonitor for Admin

For the system administrator to manage network printers.

DeskTopBinder-SmartDeviceMonitor for Client

For users to manage their network print status.

Printer Utility for Mac

This utility allows users to download and manage a variety of fonts as well as manage printers. For details about this utility, see PostScript 3 Supplement .

Note

- Some documentation about using the machine is included on the CD-ROM in PDF format. For details about using Adobe Acrobat Reader/Adobe Reader, see Adobe Acrobat Reader/Adobe Reader online Help.

Viewing the Contents of the CD-ROM

This section explains how to view the contents of the CD-ROMs.

1. Insert the CD-ROM into the CD-ROM drive.

The installer starts.

2. Click [Browse This CD-ROM].

Explorer starts and displays the contents of the CD-ROM.

Printer Drivers for This Machine

This section explains printer drivers for this machine.

★ Important

- You can install the PCL printer drivers (PCL 5c and PCL 6), the RPCS printer driver, and the Adobe PostScript printer drivers from the CD-ROM provided with this machine or download them from the supplier's Web site. If your operating system is Windows XP x64/Vista x64, or Windows Server 2003/2003 R2 x64, you must download the printer drivers from the supplier's Web site. Select this machine and the operating system you are using, and then download them.

Printing requires installation of a printer driver for your operating system. The following drivers are included on the CD-ROM labeled "Printer Drivers and Utilities".

Printer Language	PCL 6	PCL 5c	RPCS	PostScript 3
Windows 2000 ^{*1}	OK	OK	OK	OK
Windows XP ^{*2}	OK	OK	OK	OK
Windows Vista ^{*3}	OK	OK	OK	OK
Windows Server 2003 ^{*4}	OK	OK	OK	OK
Mac OS ^{*5}	—	—	—	OK
Mac OS X ^{*6}	—	—	—	OK

*1 Microsoft Windows 2000 Professional /Microsoft Windows 2000 Server/Microsoft Windows 2000 Advanced Server

*2 Microsoft Windows XP Professional/Microsoft Windows XP Home Edition

*3 Microsoft Windows Vista Ultimate/Microsoft Windows Vista Enterprise/Microsoft Windows Vista Business/Microsoft Windows Vista Home Premium/Microsoft Windows Vista Home Basic

*4 Microsoft Windows Server 2003 Standard Edition/Microsoft Windows Server 2003 Enterprise Edition/Microsoft Windows Server 2003 Web Edition/Microsoft Windows Server 2003 Datacenter Edition/Microsoft Windows Server 2003 R2 Standard Edition/Microsoft Windows Server 2003 R2 Enterprise Edition/Microsoft Windows Server 2003 R2 Datacenter Edition

*5 Versions 8.6 to 9.2 of the Mac OS (Mac OS X Classic mode is supported.)

*6 Mac OS X 10.1 or later (Native mode)

PCL printer drivers

Two kinds of PCL printer driver (PCL 5c and PCL 6) are included. These drivers allow your computer to communicate with this machine via a printer language.

RPCS printer driver

This printer driver allows the computer to communicate with the printer using a printer language. In addition to the conventional user interface, another preset user interface is provided.



Adobe PostScript Printer Drivers and PPD files

Adobe PostScript printer drivers allow the computer to communicate with the printer using a printer language. PPD files allow the printer driver to enable specific printer functions.

PPD files

PPD files allow the printer driver to enable specific printer functions.

↓ Note

- Some applications may require installation of the PCL 5c printer driver. In this case, you can install PCL 5c without having to install PCL 6.
- For details, see “Preparing for Printing”, Printer Reference , and PostScript 3 Supplement .

TWAIN Driver

This section describes the file path and system requirements of the TWAIN driver.

This driver is required to scan an original using a scanner. To use the machine as a network TWAIN scanner, this driver must be installed.

File path

The driver is included in the following folder on the CD-ROM labeled “Scanner Driver and Utilities” provided with this machine:

`\DRIVERS\TWAIN`

System requirements

- Hardware
PC/AT-compatible machines that support the following operating system properly
- Operating system
Windows 2000/XP/Vista
Windows Server 2003/2003 R2
- Display resolution
800 × 600 pixels, 256 colors or higher

↓ Note

- Under Windows NT with RISC-based processors (MIPS R series, Alpha AXP, or PowerPC), this driver is not supported.

LAN-Fax Driver

This section describes the file path and system requirements of the LAN-Fax driver.

★ Important

- You can install the LAN-Fax driver from the CD-ROM provided with this machine or download it from the supplier's Web site. If your operating system is Windows XP x64/Vista x64, or Windows Server 2003/2003 R2 x64 you must download the LAN-Fax driver from the supplier's Web site. Select this machine and the operating system you are using, and then download it.

This driver is required to use LAN-Fax functions.

File path

The driver is included in the following folders on the CD-ROM labeled "Printer Drivers and Utilities":

`\DRIVERS\LAN-FAX\XP_VISTA`

System requirements

- Hardware
PC/AT-compatible
- Operating systems
Windows 2000/XP/Vista
Windows Server 2003/2003 R2
- Display
VGA 640 × 480 pixels or more

↓ Note


- Before beginning installation, exit all other applications.

DeskTopBinder Lite

9

This section describes the file path and system requirements of DeskTopBinder Lite.

DeskTopBinder is to be installed on the client computers for integration and management of various kinds of files such as scan files, files created with applications, and existing scan files. This software allows you to use various functions for stored scan files such as viewing stored files. Also, with the ScanRouter delivery software, you can view the files stored in in-trays of the delivery server, or use other functions for stored files.

For details about the software installed with DeskTopBinder Lite, see "DeskTopBinder Lite", Scanner Reference .

File path

The software is included in the following folder on the CD-ROM labeled "Scanner Driver and Utilities" provided with this machine:

`\UTILITY\DESKV2`

System requirements

- Hardware
 - PC/AT-compatible machines that support the operating system properly
- Operating system
 - When installing all functions of DeskTopBinder:
 - Windows 2000 Professional SP1 or later/2000 Server SP1 or later/2000 Advanced Server SP1 or later/XP Professional/XP Home Edition
 - When installing only SmartDeviceMonitor for Client:
 - Windows 2000 Professional SP1 or later/2000 Server SP1 or later/XP Professional/XP Home Edition

SmartDeviceMonitor for Admin

This section describes the file path and available functions of SmartDeviceMonitor for Admin.

SmartDeviceMonitor for Admin is an application that uses TCP/IP and IPX/SPX to monitor network printers. It can monitor multiple network printers using IP address. We recommend that network administrators use this application.

File path

SmartDeviceMonitor for Admin is stored in the following folder in the CD-ROM labeled "Printer Drivers and Utilities":

\NETWORK\DEVMON\ADMIN\DISK1

Operating system	Protocol stack
Windows 2000	TCP/IP provided with Windows 2000 IPX/SPX provided with Windows 2000 NetWare Client provided with Windows 2000 Novell Client provided with Windows 2000 or Windows NT
Windows XP	TCP/IP provided with Windows XP IPX/SPX provided with Windows XP NetWare Client provided with Windows XP Novell Client provided with Windows XP
Windows Vista	TCP/IP provided with Windows Vista Novell Client provided with Windows Vista


Operating system	Protocol stack
Windows Server 2003	TCP/IP provided with Windows Server 2003 IPX/SPX provided with Windows Server 2003 NetWare Client provided with Windows Server 2003 Novell Client provided with Windows Server 2003

Available functions

SmartDeviceMonitor for Admin has the functions to check the followings:

- Printer supplies such as paper or toner
- Results of print jobs executed from the computer

↓ Note

- For details, see "Using SmartDeviceMonitor for Admin", Network and System Settings Guide , and SmartDeviceMonitor for Admin Help.

DeskTopBinder-SmartDeviceMonitor for Client

This section describes the file path and system requirements of DeskTopBinder-SmartDeviceMonitor for Client.

DeskTopBinder-SmartDeviceMonitor for Client allows you to manage and print various data such as files created with an application, images scanned with a scanner, and existing images as one document.

File path

DeskTopBinder-SmartDeviceMonitor for Client is stored in the following folder on the CD-ROM labeled "Printer Drivers and Utilities":

`\NETWORK\DEVMON\CLIENT\DISK1`

Operating environment of the printer driver

- Applicable computer
Machines which properly work with the applicable OS below. PC/AT compatible machine.
- Applicable OS
Windows 2000/XP/Vista
Windows Server 2003/2003 R2

↓ Note

- See "DeskTopBinder Lite", Scanner Reference  or Help of DeskTopBinder-SmartDeviceMonitor for Client.

- DeskTopBinder includes SmartDeviceMonitor for Client. See Help of DeskTopBinder-SmartDeviceMonitor for Client.

Specifications for the Main Unit

This section describes specifications for the main unit.

For users of type 1 and 2

Configuration:

Desktop

Photosensitivity type:

OPC drum

Original scanning:

One-dimensional solid scanning system through CCD

Copy process:

Dry electrostatic transfer system

Development:

Dry two-component magnetic brush development system

Fusing:

Oilless belt fusing

Scan resolution:

- 600 dpi × 600 dpi

Copy/Print resolution:

- 600 dpi × 600 dpi
- 1200 dpi × 1200 dpi (for printer function only)

Exposure glass:

Stationary original exposure type

Original reference position:

Rear left corner

Warm-up time (23°C, rated voltage):

- Type 1, 2: 45 seconds or less

Originals:

Sheet/book/objects

Maximum original size:

A3☐, 11 × 17☐

Copy paper size:

- Trays: A3☐ - A5☐, 11 × 17☐ - 8¹/₂ × 11☐☐, 8K (267 × 390 mm) ☐, 16K (195 × 267 mm) ☐☐
- Bypass: A3☐ - A6☐, 12 × 18☐ - 5¹/₂ × 8¹/₂☐, 8K (267 × 390 mm) ☐, 16K (195 × 267 mm)☐☐
- Bypass (custom size): Vertical: 90.0 - 305.0 mm, 3.6 - 12.1 inches
Horizontal: 148.0 - 600.0 mm, 5.83 - 23.7 inches
- Duplex: A3☐ - A5☐, 11 × 17☐ - 8¹/₂ × 11☐☐, 8K (267 × 390 mm)☐, 16K (195 × 267 mm)☐☐

Paper weight:

- Trays: 60.0 - 256.0 g/m², 16 lb. - 68 lb.
- Bypass: 60.0 - 256.0 g/m², 16 lb. - 68 lb.
- Duplex: 60.0 - 169.0 g/m², 16 lb. - 45 lb.

For details about and recommendations concerning thick paper, see "Thick Paper".

Non-reproduction area (Copier):

- Leading edge: 3.7 - 6.7 mm, 0.15 - 0.26 inches (2.7 - 5.7 mm, 0.10 - 0.22 inches for paper heavier than 81 g/m², 22.0 lb.)
- Trailing edge: 0.5 - 6.0 mm, 0.19 - 0.24 inches
- Left and Right: 0.5 - 4.0 mm, 0.19 - 0.16 inches

First copy/print time:

- Type 1, 2:
 - Color: 8.0 seconds or less
 - B&W: 5.0 seconds or less

(A4☐, 8¹/₂ × 11☐, 100% reproduction, feeding from Tray 1, on the exposure glass)

Copying speed (Full Color / B&W):

- Type 1:
 - 28/28 copies/minute (A4☐, 8¹/₂ × 11☐)
- Type 2:
 - 33/33 copies/minute (A4☐, 8¹/₂ × 11☐)

Reproduction ratio:

Preset reproduction ratios:

- Enlargement

Metric version	Inch version
400%	400%
200%	200%
141%	155%
122%	129%
115%	121%

- Full size

Metric version	Inch version
100%	100%

- Reduction

Metric version	Inch version
93%	93%
82%	85%
75%	78%
71%	73%
65%	65%
50%	50%
25%	25%

Zoom: From 25 to 400% in increments of 1%

Maximum continuous copy run:

999 sheets

Paper capacity (80 g/m², 20 lb.):

- Tray1, 2: 550 sheets
- Bypass tray: 100 sheets

Power source:

120 V, 60 Hz, 12 A or more

Please be sure to connect the power cord to a power source as above. For details about power source, see "Power Connection".

Power consumption:

- Main unit only

	Type 1	Type 2
Warm-up	1440 W	1440 W
Stand-by	204 W	204 W
During printing	737 W	795 W
Maximum	1440 W	1440 W

- Complete system

	Type 1	Type 2
Warm-up	1440 W	1440 W
Stand-by	222 W	222 W
During printing	824 W	883 W
Maximum	1440 W	1440 W

- The complete system consists of the main unit, Booklet Finisher SR3000, large capacity tray, file format converter, IEEE 802.11b (wireless LAN) interface unit, and USB Host interface unit.

Dimensions (W × D × H up to exposure glass):

Type 1, 2: 670 × 671 × 760 mm, 26.4 × 26.5 × 30.0 inches

Space for main unit (W × D):

Type 1, 2: 1,065 × 671 mm, 42.0 × 26.5 inches

Noise emission:

- Sound power level:
 - Main unit only

	Type 1	Type 2
Stand-by	Less than 39.5 dB (A)	Less than 39.5 dB (A)
Copying	Less than 63.2 dB (A)	Less than 63.4 dB (A)

- Complete system

	Type 1	Type 2
Stand-by	Less than 39.7 dB (A)	Less than 39.7 dB (A)
Copying	Less than 69.5 dB (A)	Less than 70.3 dB (A)

- Sound pressure level:

- Main unit only

	Type 1	Type 2
Stand-by	Less than 29.1 dB (A)	Less than 29.1 dB (A)
Copying	Less than 50.6 dB (A)	Less than 50.6 dB (A)

- Complete system

	Type 1	Type 2
Stand-by	Less than 26.5 dB (A)	Less than 26.5 dB (A)
Copying	Less than 55.2 dB (A)	Less than 56.0 dB (A)

- Sound power level and sound pressure level are actual values measured in accordance with ISO 7779.
- Sound power level and sound pressure level are measured from the position of the bystander.
- The complete system consists of the main unit, auto document feeder, internal tray 2 (1 bin tray), lower paper trays, large capacity tray (LCT), bridge unit, Booklet Finisher SR3000, and punch kit for the Booklet Finisher SR3000.

Weight:

Type 1, 2: Approx. 110 kg, 242.6 lb.

Reference

- p.96 "Thick Paper"
- p.135 "Power Connection"

For users of type 3 and 4

Configuration:

Desktop

Photosensitivity type:

OPC drum

Original scanning:

One-dimensional solid scanning system through CCD

Copy process:

Dry electrostatic transfer system

Development:

Dry two-component magnetic brush development system

Fusing:

Induction Heating (IH) fusing

Scan resolution:

- 600 dpi × 600 dpi

Copy/Print resolution:

- 600 dpi × 600 dpi
- 1200 dpi × 1200 dpi (for printer function only)

Exposure glass:

Stationary original exposure type

Original reference position:

Rear left corner

Warm-up time (23°C, rated voltage):

- Type 3: 21 seconds or less
- Type 4: 27 seconds or less

Originals:

Sheet/book/objects

Maximum original size:

A3☐, 11 × 17☐

Paper size:

- Trays: A3☐ - A5☐, 11 × 17☐ - 8¹/₂ × 11☐☐, 8K (267 × 390 mm)☐, 16K (195 × 267 mm)☐☐
- Bypass: A3☐ - A6☐, 12 × 18☐ - 5¹/₂ × 8¹/₂☐, 8K (267 × 390 mm)☐, 16K (195 × 267 mm)☐☐
- Bypass (custom size): Vertical: 90.0 - 305.0 mm, 3.6 - 12.1 inches
Horizontal: 148.0 - 600.0 mm, 5.83 - 23.7 inches

- Duplex: A3, A5, 11 × 17 - 8 1/2 × 11, 8K (267 × 390 mm), 16K (195 × 267 mm)

Paper weight:

- Trays: 60.0 - 256.0 g/m², 16 lb. - 68 lb.
- Bypass: 60.0 - 256.0 g/m², 16 lb. - 68 lb.
- Duplex: 60.0 - 169.0 g/m², 16 lb. - 45 lb.

For details about and recommendations concerning thick paper, see "Thick Paper".

Non-reproduction area (Copier):

- Leading edge: 3.7 - 6.7 mm, 0.15 - 0.26 inches (2.7 - 5.7 mm, 0.10 - 0.22 inches for paper heavier than 81 g/m², 22.0 lb.)
- Trailing edge: 0.5 - 6.0 mm, 0.19 - 0.24 inches
- Left and Right: 0.5 - 4.0 mm, 0.19 - 0.16 inches

First copy/print time:

- Type 3:
 - Color: 6.5 seconds or less
 - B&W: 3.9 seconds or less
- Type 4:
 - Color: 5.9 seconds or less
 - B&W: 3.5 seconds or less

(A4, 8 1/2 × 11, 100% reproduction, feeding from Tray 1, on the exposure glass)

Copying speed (Full Color / B&W):

- Type 3: 40/40 copies/minute (A4, 8 1/2 × 11)
- Type 4: 50/50 copies/minute (A4, 8 1/2 × 11)

Reproduction ratio:

- Preset reproduction ratios:
 - Enlargement

Metric version	Inch version
400%	400%
200%	200%
141%	155%
122%	129%
115%	121%

- Full size

Metric version	Inch version
100%	100%

- Reduction

Metric version	Inch version
93%	93%
82%	85%
75%	78%
71%	73%
65%	65%
50%	50%
25%	25%

- Zoom: From 25 to 400% in increments of 1%

Maximum continuous copy run:

999 sheets

Paper capacity (80 g/m², 20 lb.):

- Tray 1, 2: 550 sheets
- Bypass tray: 100 sheets

Power source:

120 V, 60 Hz, 12 A or more

Please be sure to connect the power cord to a power source as above. For details about power source, see "Power Connection".

Power consumption:

- Main unit only

	Type 3	Type 4
Warm-up	1440 W	1440 W
Stand-by	137 W	137 W
During printing	901 W	1027 W

	Type 3	Type 4
Maximum	1440 W	1440 W

- Complete system

	Type 3	Type 4
Warm-up	1440 W	1440 W
Stand-by	151 W	151 W
During printing	1123 W	1223 W
Maximum	1440 W	1440 W

- The complete system consists of the main unit, Booklet Finisher SR3020, large capacity tray (LCT), fax unit, and printer/scanner unit.

Dimensions (W × D × H up to exposure glass):

Types 3, 4: 670 × 677 × 760 mm, 26.4 × 26.7 × 30.0 inches

Space for main unit (W × D):

Types 3, 4: 1,065 × 677 mm, 42.0 × 26.7 inches

Noise emission:

- Sound power level:
 - Main unit only

	Type 3	Type 4
Stand-by	Less than 35.4 dB (A)	Less than 35.4 dB (A)
Copying	Less than 66.7 dB (A)	Less than 67.0 dB (A)

- Complete system

	Type 3	Type 4
Stand-by	Less than 36.6 dB (A)	Less than 36.6 dB (A)
Copying	Less than 71.9 dB (A)	Less than 72.1 dB (A)

- Sound pressure level:
 - Main unit only

	Type 3	Type 4
Stand-by	Less than 21.6 dB (A)	Less than 21.6 dB (A)
Copying	Less than 54.0 dB (A)	Less than 54.5 dB (A)

- Complete system

	Type 3	Type 4
Stand-by	Less than 20.6 dB (A)	Less than 20.9 dB (A)
Copying	Less than 57.9 dB (A)	Less than 58.0 dB (A)

- Sound power level and sound pressure level are actual values measured in accordance with ISO 7779.
- Sound power level and sound pressure level are measured from the position of the bystander.
- The complete system consists of the main unit, auto document feeder, internal tray 2 (1 bin tray), lower paper trays, large capacity tray (LCT), bridge unit, Booklet Finisher SR3020, and punch kit for the Booklet Finisher SR3020.

Weight:

Types 3, 4: Approx. 110 kg, 242.6 lb.

Reference

- p.96 "Thick Paper"
- p.135 "Power Connection"

Document Server for Type 1 and 2

HDD (Document Server):

Approx. 17 GB

Maximum: 2,000 pages

(Total number of pages that can be stored with all functions combined)

Copier/Black and white mode/A4 original: 2,000

Copier/Full-color mode/A4 original: 500

Printer/Black and white/A4/600 dpi, 2 bits: about 2,000

Scanner/Full color/A4/200 dpi, 8 bits/JPEG: about 2,000

(Under the printer and scanner functions, the number of the pages that can be stored depends on the print image and original.)

Maximum number of stored documents:

Maximum: 1,000

(The maximum number of received faxes that can be stored is 400.)

Number of Pages Supported by Memory Sorting:

Maximum: 1,000 pages

Copier/Black-and-white mode/A4 original: about 1,000

Printer/Black and white/A4/600 dpi, 2 bits: about 1,000

(Under the printer function, the number of the pages that can be sorted depends on the print image.)

Document Server for Type 3 and 4

HDD (Document Server):

Approx. 34 GB

Maximum: 9,000 pages

(Total number of pages that can be accommodated stored with all functions combined)

Copier/Black and white mode/A4 original: about 4,000

Copier/Full-color mode/A4 original: about 1,000

Printer/Black and white/A4/600 dpi, 2 bits: about 9,000

Scanner/Full color/A4/200 dpi, 8 bits/JPEG: about 9,000

(Under the printer and scanner functions, the number of the pages that can be stored depends on the print image and original.)

Maximum number of stored documents:

Maximum: 3,000

(The maximum number of received faxes that can be stored is 400.)

Number of Pages Supported by Memory Sorting:

Maximum: 2,000 pages

Copier/Black-and-white mode/A4 original: about 2,000

Printer/Black and white/A4/600 dpi, 2 bits: about 2,000

(Under the printer function, the number of the pages that can be sorted depends on the print image.)

Specifications for Auto Document Feeder

This section describes specifications for auto document feeder.

Specifications for Auto Document Feeder (ARDF DF3030)


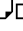


This section describes specifications for auto document feeder ARDF DF 3030.

Mode:





ADF mode, Batch mode, SADF mode, Mixed Size mode, Custom Size originals mode

Original size:


Metric version:

- 1-sided originals: A3  - A5 
- 2-sided originals: A3  - A5 

Inch version:

- 1-sided originals: 11 × 17  - 5¹/₂ × 8¹/₂ 
- 2-sided originals: 11 × 17  - 5¹/₂ × 8¹/₂ 

Original weight:

- 1-sided originals: 40 - 128 g/m² (11 - 34 lb.)
- 2-sided originals: 52 - 105 g/m² (14 - 28 lb.) (64 - 105 g/m² (17 - 28 lb.) for 11 × 17 

Number of originals to be set:

50 sheets (81.4 g/m², 22 lb.)

Maximum power consumption:

Less than 50 W (Power is supplied from the main unit.)

Dimensions (W × D × H):

550 × 491 × 120 mm, 21.7 × 19.4 × 4.8 inches

Weight:

Approx. 10 kg, 22 lb.

Note

- Specifications are subject to change without notice.

Specifications for Auto Document Feeder (ARDF DF3010)

This section describes specifications for auto document feeder ARDF DF3010.

Mode:

ADF mode, Batch mode, SADF mode, Mixed Size mode, Custom Size originals mode

Original size:

- Metric version:
 - 1-sided originals: A3☐ - B6 JIS (Japanese Industrial Standard)☐☐
 - 2-sided originals: A3☐ - A5☐☐
- Inch version:
 - 1-sided originals: 11 × 17☐ - 5¹/₂ × 8¹/₂☐☐
 - 2-sided originals: 11 × 17☐ - 5¹/₂ × 8¹/₂☐☐

Original weight:

- 1-sided originals: 40 - 128 g/m² (10 - 34 lb.)
- 2-sided originals: 52 - 128 g/m² (14 - 34 lb.)

Number of originals to be set:

100 sheets (80 g/m², 20 lb.)

Maximum power consumption:

Less than 60 W (Power is supplied from the main unit.)

Dimensions (W × D × H):

570 × 520 × 135 mm, 22.5 × 20.5 × 5.4 inches

Weight:

Approx. 12 kg, 26.5 lb.

9

Note

- Specifications are subject to change without notice.

Specifications for Finishers (Optional)

This section describes specifications for finishers.

Specifications for Finisher SR790 (1000-sheet) (Optional)

This section describes specifications for the Finisher SR790.

Finisher Upper Tray

This section describes specifications for the finisher upper tray of the Finisher SR790.

Paper size:

A3, B4 JIS, A4, B5 JIS, A5, B6 JIS, A6, 12 × 18, 11 × 17, 11 × 15, 11 × 14, 10 × 15, 10 × 14, 8¹/₂ × 14, 8¹/₂ × 13, 8¹/₂ × 11, 8¹/₄ × 14, 8¹/₄ × 13, 8 × 13, 8 × 10¹/₂, 8 × 10, 5¹/₂ × 8¹/₂, 7¹/₄ × 10¹/₂, 8K, 16K, custom size

Paper weight:

52 - 260 g/m², 14 - 68 lb.

Stack capacity (80 g/m², 20 lb.):

- 250 sheets: A4, 8¹/₂ × 11 or smaller
- 50 sheets: B4 JIS, 8¹/₂ × 14 or larger

Finisher Shift Tray

This section describes specifications for the finisher shift tray of the Finisher SR790.

Paper size:

A3, B4 JIS, A4, B5 JIS, A5, 12 × 18, 11 × 17, 11 × 15, 11 × 14, 10 × 15, 10 × 14, 8¹/₂ × 14, 8¹/₂ × 13, 8¹/₂ × 11, 8¹/₄ × 14, 8¹/₄ × 13, 8 × 13, 8 × 10¹/₂, 8 × 10, 5¹/₂ × 8¹/₂, 7¹/₄ × 10¹/₂, 8K, 16K

Paper weight:

52 - 163 g/m², 14 - 43 lb.

Stack capacity (80 g/m², 20 lb.):

- 1,000 sheets: A4, 8¹/₂ × 11 or smaller
- 500 sheets: B4 JIS, 8¹/₂ × 14 or larger, and A5
- 100 sheets: A5, 5¹/₂ × 8¹/₂

Staple paper size:

A3, B4 JIS, A4, B5 JIS, 11 × 17, 11 × 15, 11 × 14, 10 × 15, 10 × 14, 8¹/₂ × 14, 8¹/₄ × 14, 8¹/₂ × 13, 8¹/₄ × 13, 8 × 13, 8¹/₂ × 11, 8 × 10¹/₂, 8 × 10, 7¹/₄ × 10¹/₂

Staple paper weight:

64 - 90 g/m², 17 - 28 lb.

Staple capacity (80 g/m², 20 lb.):

- 50 sheets: A4, 8¹/₂ × 11 or smaller
- 30 sheets: B4 JIS, 8¹/₂ × 14 or larger

Stack capacity after stapling (80 g/m², 20 lb.):

- 2 - 9 sheets: 100 sets (A4, B5 JIS, 8¹/₂ × 11)
- 10 - 50 sheets: 100 - 20 sets (A4, 8¹/₂ × 11)
- 10 - 50 sheets: 50 - 10 sets (A4, B5 JIS, 8¹/₂ × 11)
- 2 - 9 sheets: 50 sets (A3, B4 JIS, 11 × 17, 8¹/₂ × 14)
- 10 - 30 sheets: 50 - 10 sets (A3, B4 JIS, 11 × 17, 8¹/₂ × 14)

Staple position:

3 positions (Top, Bottom, 2 Staples)

Power consumption:

50 W (Power is supplied from the main unit.)

Dimensions (W × D × H):

527 × 520 × 790 mm, 20.8 × 20.5 × 31.2 inches

Weight:

Approx. 25 kg, 55.2 lb.

Specifications for Finisher SR3030 (3000-sheet) (Optional)

This section describes specifications for the Finisher SR3030.

Finisher Upper Tray

This section describes specifications for the finisher upper tray of the Finisher SR3030.

Paper size:

A3, B4 JIS, A4, B5 JIS, A5, B6 JIS, A6, 12 × 18, 11 × 17, 11 × 15, 11 × 14, 10 × 15, 10 × 14, 8¹/₂ × 14, 8¹/₂ × 13, 8¹/₂ × 11

8¹/₄ × 14□, 8¹/₄ × 13□, 8 × 13□, 8 × 10¹/₂□, 8 × 10□, 5¹/₂ × 8¹/₂□, 7¹/₄ × 10¹/₂□, 8K□, 16K□, custom size

Paper weight:

52 - 163 g/m², 14 - 43 lb.

Stack capacity (80 g/m², 20 lb.):

- 250 sheets: A4, 8¹/₂ × 11 or smaller
- 50 sheets: B4 JIS, 8¹/₂ × 14 or larger

Finisher Shift Tray

This section describes specifications for the finisher shift tray of the Finisher SR3030.

Paper size:

A3□, B4 JIS□, A4□, B5 JIS□, A5□, B6 JIS□, A6□, 12 × 18□, 11 × 17□, 11 × 15□, 11 × 14□, 10 × 15□, 10 × 14□, 8¹/₂ × 14□, 8¹/₂ × 13□, 8¹/₂ × 11□, 8¹/₄ × 14□, 8¹/₄ × 13□, 8 × 13□, 8 × 10¹/₂□, 8 × 10□, 5¹/₂ × 8¹/₂□, 7¹/₄ × 10¹/₂□, 8K□, 16K□, custom size

Paper weight:

52 - 256 g/m², 14 - 68 lb.

Stack capacity (80 g/m², 20 lb.):

- 3,000 sheets: A4□, 8¹/₂ × 11□
- 1,500 sheets: A3□, B4 JIS□, A4□, B5 JIS□, 11 × 17□, 8¹/₂ × 14□, 8¹/₂ × 11□, 12 × 18□
- 500 sheets: A5□
- 100 sheets: A5□, B6 JIS□, A6□, 5¹/₂ × 8¹/₂□

Staple paper size:

A3□, B4 JIS□, A4□, B5 JIS□, 12 × 18□, 11 × 17□, 11 × 15□, 11 × 14□, 10 × 15□, 10 × 14□, 8¹/₂ × 14□, 8¹/₄ × 14□, 8¹/₂ × 13□, 8¹/₄ × 13□, 8 × 13□, 8¹/₂ × 11□, 8 × 10¹/₂□, 8 × 10□, 7¹/₄ × 10¹/₂□, 8K□, 16K□

Staple paper weight:

64 - 90 g/m², 17 - 24 lb.

Staple capacity (80 g/m², 20 lb.):

- Without Mixed Size:
 - 30 sheets: A3□, B4 JIS□, 12 × 18□, 11 × 17□, 8¹/₂ × 14□
 - 50 sheets: A4□, B5 JIS□, 8¹/₂ × 11□
- With Mixed Size:

- 30 sheets: A3□/ A4□, B4 JIS□/ B5 JIS□, 11 × 17□/8¹/₂ × 11□

Stack capacity after stapling (80 g/m², 20 lb.):

- Without Mixed Size:
 - 2 - 19 sheets: 150 sets (A4□, 8¹/₂ × 11□)
 - 20 - 50 sheets: 150 - 60 sets (A4□, 8¹/₂ × 11□)
 - 2 - 14 sheets: 100 sets (A4□, B5 JIS□, 8¹/₂ × 11□)
 - 15 - 50 sheets: 100 - 30 sets (A4□, B5 JIS□, 8¹/₂ × 11□)
 - 2 - 14 sheets: 100 sets (other size paper)
 - 15 - 30 sheets: 100 - 33 sets (other size paper)
- With Mixed Size:
 - 2 - 30 sheets: 50 sets: A3□/ A4□, B4 JIS□/ B5 JIS□, 11 × 17□/8¹/₂ × 11□

Staple position:

4 positions (Top, Top Slant, Bottom, 2 Staples)

Power consumption:

Approx. 96 W (Power is supplied from the main unit.)

Dimensions (W × D × H):

657 × 613 × 960 mm, 25.8 × 24.2 × 37.8 inches

Weight:

- Approx. 54 kg, 119.1 lb. (without punch kit)
- Approx. 56 kg, 123.5 lb. (with punch kit)

9

Specifications for Finisher SR3010 (500-sheet) (Optional)

This section describes specifications for Finisher SR3010.

Paper size:

A3□, B4 JIS (Japanese Industrial Standard)□, A4□□, B5 JIS□□, 11 × 17□, 11 × 15□, 11 × 14□, 10 × 15□, 10 × 14□, 8¹/₂ × 14□, 8¹/₄ × 14□, 8¹/₂ × 13□, 8¹/₂ × 11□□, 8¹/₄ × 13□, 8 × 13□, 8 × 10¹/₂□□, 8 × 10□□, 7¹/₄ × 10¹/₂□□

Paper weight:

52 - 253 g/m², 14 - 67.5 lb.

Stack capacity (80 g/m², 20 lb.):

- 500 sheets: A4, 8¹/₂ × 11 or smaller
- 250 sheets: B4 JIS, 8¹/₂ × 14 or larger

Staple paper size:

A3, B4 JIS, A4, B5 JIS, 11 × 17, 11 × 15, 11 × 14, 10 × 15, 10 × 14, 8¹/₂ × 14, 8¹/₄ × 14, 8¹/₂ × 13, 8¹/₂ × 11, 8¹/₄ × 13, 8 × 13, 8 × 10¹/₂, 8 × 10, 7¹/₄ × 10¹/₂

Staple paper weight:

52 - 253 g/m², 14 - 67.5 lb.

Staple capacity (80 g/m², 20 lb.):

- Without Mixed Size:
 - 50 sheets: A4, 8¹/₂ × 11 or smaller
 - 30 sheets: B4 JIS, 8¹/₂ × 14 or larger
- With Mixed Size:
 - 30 sheets: A3/A4, B4 JIS/B5 JIS, 11 × 17/8¹/₂ × 11, 8¹/₂ × 14/8¹/₂ × 11

Stack capacity after stapling (80 g/m², 20 lb.):

- 2 - 9 sheets: 55 - 46 sets (A4, B5 JIS, 8¹/₂ × 11)
- 10 - 50 sheets: 45 - 10 sets (A4, B5 JIS, 8¹/₂ × 11)
- 2 - 9 sheets: 55 - 27 sets (A4, B5 JIS, 8¹/₂ × 11)
- 10 - 50 sheets: 25 - 8 sets (A4, B5 JIS, 8¹/₂ × 11)
- 2 - 9 sheets: 55 - 27 sets (A3, B4 JIS, 11 × 17, 8¹/₂ × 14)
- 10 - 30 sheets: 25 - 8 sets (A3, B4 JIS, 11 × 17, 8¹/₂ × 14)

Staple position:

5 positions (Top, Top Slant, Bottom, Bottom Slant, 2 Staples)

Power consumption:

Approx. 50 W (Power is supplied from the main unit.)

Dimensions (W × D × H):

396 × 551 × 275 mm, 15.6 × 21.7 × 10.2 inches

Weight:

Approx. 12 kg, 26.5 lb.

Specifications for Booklet Finisher (Optional)

This section describes specifications for booklet finisher.

Specifications for Booklet Finisher SR3020 (2000-sheet-Booklet) (Optional)

This section describes specifications for Booklet Finisher SR3020.

Finisher Upper Tray

This section describes specifications for the finisher upper tray of Booklet Finisher SR3020.

Paper size:

A3, B4 JIS, A4, B5 JIS, A5, B6 JIS, A6, 12 × 18, 11 × 17, 11 × 15, 11 × 14, 10 × 15, 10 × 14, 8 1/2 × 14, 8 1/2 × 13, 8 1/2 × 11, 8 1/4 × 14, 8 1/4 × 13, 8 × 13, 8 × 10 1/2, 8 × 10, 5 1/2 × 8 1/2, 7 1/4 × 10 1/2, 8K, 16K, custom size

Paper weight:

52 - 163 g/m², 14 - 43 lb.

Stack capacity (80 g/m², 20 lb.):

- 250 sheets: A4, 8 1/2 × 11 or smaller
- 50 sheets: B4 JIS, 8 1/2 × 14 or larger

9

Finisher Shift Tray

This section describes specifications for the finisher shift tray of Booklet Finisher SR3020.

Paper size:

A3, B4 JIS, A4, B5 JIS, A5, B6 JIS, A6, 12 × 18, 11 × 17, 11 × 15, 11 × 14, 10 × 15, 10 × 14, 8 1/2 × 14, 8 1/2 × 13, 8 1/2 × 11, 8 1/4 × 14, 8 1/4 × 13, 8 × 13, 8 × 10 1/2, 8 × 10, 5 1/2 × 8 1/2, 7 1/4 × 10 1/2, 8K, 16K, custom size

Paper weight:

52 - 256 g/m², 14 - 68 lb.

Stack capacity (80 g/m², 20 lb.):

- 2,000 sheets: A4, 8 1/2 × 11
- 1,000 sheets: A3, B4 JIS, A4, B5 JIS, 11 × 17, 8 1/2 × 14, 8 1/2 × 11, 12 × 18

- 500 sheets: A5
- 100 sheets: A5, B6 JIS, A6, $5\frac{1}{2} \times 8\frac{1}{2}$

Staple paper size:

A3, B4 JIS, A4, B5 JIS, 12×18 , 11×17 , 11×15 , 11×14 , 10×15 , 10×14 , $8\frac{1}{2} \times 14$, $8\frac{1}{4} \times 14$, $8\frac{1}{2} \times 13$, $8\frac{1}{4} \times 13$, 8×13 , $8\frac{1}{2} \times 11$, $8 \times 10\frac{1}{2}$, 8×10 , $7\frac{1}{4} \times 10\frac{1}{2}$, 8K, 16K

Staple paper weight:

64 - 90 g/m², 17 - 24 lb.

Staple capacity (80 g/m², 20 lb.):

- Without Mixed Size:
 - 30 sheets: A3, B4 JIS, 12×18 , 11×17 , $8\frac{1}{2} \times 14$
 - 50 sheets: A4, B5 JIS, $8\frac{1}{2} \times 11$
- With Mixed Size:
 - 30 sheets: A3/A4, B4 JIS/B5 JIS, $11 \times 17/8\frac{1}{2} \times 11$

Stack capacity after stapling (80 g/m², 20 lb.):

- Without Mixed Size:
 - 2 - 12 sheets: 150 sets (A4, $8\frac{1}{2} \times 11$)
 - 13 - 50 sheets: 150 - 40 sets (A4, $8\frac{1}{2} \times 11$)
 - 2 - 9 sheets: 100 sets (A4, B5 JIS, $8\frac{1}{2} \times 11$)
 - 10 - 50 sheets: 100 - 20 sets (A4, B5 JIS, $8\frac{1}{2} \times 11$)
 - 2 - 9 sheets: 100 sets (other size paper)
 - 10 - 30 sheets: 100 - 33 sets (other size paper)
- With Mixed Size:
 - 2 - 30 sheets: 50 sets: A3/A4, B4 JIS/B5 JIS, $11 \times 17/8\frac{1}{2} \times 11$

Staple position:

4 positions (Top, Top Slant, Bottom, 2 Staples)

Finisher Booklet Tray

This section describes specifications for the finisher booklet tray of Booklet Finisher SR3020.

Saddle stitch paper size:

A3, B4 JIS, A4, B5 JIS, 11×17 , $8\frac{1}{2} \times 14$, $8\frac{1}{2} \times 11$

Saddle stitch paper weight:

64 - 90 g/m², 17 - 24 lb.

Saddle stitch capacity (80 g/m², 20 lb.):

1 set: 15 sheets

Stack capacity after saddle stitching (80 g/m², 20 lb.):

- 2 - 5 sheets: 30 sets
- 6 - 10 sheets: 15 sets
- 11 - 15 sheets: 10 sets

Saddle stitch position:

Center 2 positions

Power consumption:

Approx. 96 W (Power is supplied from the main unit.)

Dimensions (W × D × H):

657 × 613 × 960 mm, 25.8 × 24.2 × 37.8 inches

Weight:

- Approx. 63 kg, 138.9 lb. (without punch kit)
- Approx. 65 kg, 143.3 lb. (with punch kit)

Specifications for Booklet Finisher SR3000 (1000-sheet-Booklet) (Optional)

This section describes specifications for Booklet Finisher SR3000.

9

Finisher Upper Tray

This section describes specifications for the finisher upper tray of Booklet Finisher SR3000.

Paper size:

A3, B4 JIS, A4, B5 JIS, A5, B6 JIS, A6, 11 × 17, 8¹/₂ × 14, 8¹/₂ × 13, 8¹/₂ × 11, 8 × 13, 5¹/₂ × 8¹/₂, 7¹/₄ × 10¹/₂

Paper weight:

52 - 105 g/m², 14 - 28 lb.

Stack capacity (80 g/m², 20 lb.):

- 100 sheets: A4, 8¹/₂ × 11 or smaller
- 50 sheets: B4 JIS, 8¹/₂ × 14 or larger

Finisher Shift Tray

This section describes specifications for the finisher shift tray of Booklet Finisher SR3000.

Paper size:

A3□, B4 JIS□, A4□, B5 JIS□, 11 × 17□, 8¹/₂ × 14□, 8¹/₂ × 13□, 8¹/₂ × 11□, 8¹/₄ × 13□, 8 × 13□, 7¹/₄ × 10¹/₂□

Paper weight:

52 - 256 g/m², 14 - 68 lb.

Stack capacity (80 g/m², 20 lb.):

- 1,000 sheets: A4, 8¹/₂ × 11 or smaller
- 500 sheets: B4 JIS, 8¹/₂ × 14 or larger

Staple paper size:

A3□, B4 JIS□, A4□, B5 JIS□, 11 × 17□, 8¹/₂ × 14□, 8¹/₂ × 11□, 7¹/₄ × 10¹/₂□, 8 × 13□, 8¹/₂ × 13□, 8¹/₄ × 13□

Staple paper weight:

64 - 90 g/m², 17 - 24 lb.

Staple capacity (80 g/m², 20 lb.):

- 50 sheets: A4, 8¹/₂ × 11 or smaller
- 30 sheets: B4 JIS, 8¹/₂ × 14 or larger

Stack capacity after stapling (80 g/m², 20 lb.):

- 2 - 9 sheets: 100 sets (A4□, 8¹/₂ × 11□)
- 10 - 50 sheets: 100 - 20 sets (A4□, 8¹/₂ × 11□)
- 2 - 9 sheets: 100 sets (A4□, B5 JIS□, 8¹/₂ × 11□)
- 10 - 50 sheets: 50 - 10 sets (A4□, B5 JIS□, 8¹/₂ × 11□)
- 2 - 9 sheets: 50 sets (A3□, B4 JIS□, 11 × 17□, 8¹/₂ × 14□)
- 10 - 30 sheets: 50 - 10 sets (A3□, B4 JIS□, 11 × 17□, 8¹/₂ × 14□)

Staple position:

3 positions (Top, Bottom, 2 Staples)

Finisher Booklet Tray

This section describes specifications for the finisher booklet tray of Booklet Finisher SR3000.

Saddle stitch paper size:

A3□, B4 JIS□, A4□, B5 JIS□, 11 × 17□, 8¹/₂ × 14□, 8¹/₂ × 11□

Saddle stitch paper weight:

64 - 90 g/m², 17 - 24 lb.

Saddle stitch capacity (80 g/m², 20 lb.):

1 set: 10 sheets

Stack capacity after saddle stitching (80 g/m², 20 lb.):

- 2 - 5 sheets: 20 sets
- 6 - 10 sheets: 10 sets

Saddle stitch position:

Center 2 positions

Power consumption:

Approx. 60 W (Power is supplied from the main unit.)

Dimensions (W × D × H):

535 × 600 × 930 mm, 21.1 × 23.7 × 36.7 inches

Weight:

- Approx. 48 kg, 105.9 lb. (without punch kit)
- Approx. 50 kg, 110.3 lb. (with punch kit)

Specifications for Punch Kit (Optional)

This section describes specifications for punch kit.

Specifications for Punch Kit (Finisher SR3030, Booklet Finisher SR3020) (Optional)

This section describes specifications for the punch kit (Finisher SR3030, Booklet Finisher SR3020).

Paper size:

Punch unit type	Paper size
2 & 4 holes type: 2 holes	☐: A3, B4 JIS, A4, B5 JIS, A5, 11×17 , $8\frac{1}{2} \times 14$, $8\frac{1}{2} \times 11$, $5\frac{1}{2} \times 8\frac{1}{2}$, $7\frac{1}{4} \times 10\frac{1}{2}$, 8×13 , $8\frac{1}{2} \times 13$, $8\frac{1}{4} \times 13$, $8\frac{1}{4} \times 14$, $8 \times 10\frac{1}{2}$, 8×10 , 11×15 , 11×14 , 10×15 , 10×14 , 8K, 16K
2 & 4 holes type: 2 holes	☐: A4, B5 JIS, A5, $8\frac{1}{2} \times 11$, $7\frac{1}{4} \times 10\frac{1}{2}$, $8 \times 10\frac{1}{2}$, 8×10
2 & 4 holes type: 4 holes	☐: A3, B4 JIS, 11×17 , 11×15 , 11×14 , $7\frac{1}{4} \times 10\frac{1}{2}$, 8K
2 & 4 holes type: 4 holes	☐: A4, B5 JIS, $8\frac{1}{2} \times 11$, $8 \times 10\frac{1}{2}$, $7\frac{1}{4} \times 10\frac{1}{2}$, 16K
4 holes type: 4 holes	☐: A3, B4 JIS, A4, B5 JIS, A5, 11×17 , $8\frac{1}{2} \times 14$, $8\frac{1}{2} \times 11$, $5\frac{1}{2} \times 8\frac{1}{2}$, $7\frac{1}{4} \times 10\frac{1}{2}$, 8×13 , $8\frac{1}{2} \times 13$, $8\frac{1}{4} \times 13$, $8\frac{1}{4} \times 14$, $8 \times 10\frac{1}{2}$, 8×10 , 11×15 , 11×14 , 10×15 , 10×14 , 8K, 16K
4 holes type: 4 holes	☐: A4, B5 JIS, A5, $8\frac{1}{2} \times 11$, $7\frac{1}{4} \times 10\frac{1}{2}$, $8 \times 10\frac{1}{2}$, 8×10
2 & 3 holes type: 2 holes	☐: A3, B4 JIS, B5 JIS, A5, 11×17 , $8\frac{1}{2} \times 14$, $8\frac{1}{2} \times 11$, $5\frac{1}{2} \times 8\frac{1}{2}$, $7\frac{1}{4} \times 10\frac{1}{2}$, 8×13 , $8\frac{1}{2} \times 13$, $8\frac{1}{4} \times 13$, $8\frac{1}{4} \times 14$, $8 \times 10\frac{1}{2}$, 8×10 , 11×15 , 11×14 , 10×15 , 10×14 , 8K, 16K
2 & 3 holes type: 2 holes	☐: A4, B5 JIS, A5, $8\frac{1}{2} \times 11$, $7\frac{1}{4} \times 10\frac{1}{2}$, $8 \times 10\frac{1}{2}$, 8×10

Punch unit type	Paper size
2 & 3 holes type: 3 holes	☐: A3, B4 JIS, 11 × 17, 11 × 15, 11 × 14, 10 × 15, 10 × 14, 7 ¹ / ₄ × 10 ¹ / ₂ , 8K
2 & 3 holes type: 3 holes	☐: A4, B5 JIS, 8 ¹ / ₂ × 11, 8 × 10 ¹ / ₂ , 8 × 10, 7 ¹ / ₄ × 10 ¹ / ₂ , 16K

Paper weight:

52 - 105 g/m², 14 - 28 lb.

Power consumption:

20 W (Power is supplied from the main unit.)

Dimensions (W × D × H):

110 × 484 × 117 mm, 4.4 × 190.6 × 46.1 inches

Weight:

Approx. 2.9 kg, 6.4 lb.

Specifications for Punch Kit (Booklet Finisher SR3000) (Optional)

This section describes specifications for the punch kit (Booklet Finisher SR3000).

Paper size:

Punch unit type	Paper size
2 & 4 holes type: 2 holes	☐: A3, B4 JIS, A4, B5 JIS, A5, 11 × 17, 8 ¹ / ₂ × 14, 8 ¹ / ₂ × 11, 5 ¹ / ₂ × 8 ¹ / ₂ , 7 ¹ / ₄ × 10 ¹ / ₂ , 8 × 13, 8 ¹ / ₂ × 13, 8 ¹ / ₄ × 13
2 & 4 holes type: 2 holes	☐: A4, B5 JIS, A5, 8 ¹ / ₂ × 11, 7 ¹ / ₄ × 10 ¹ / ₂ , 5 ¹ / ₂ × 8 ¹ / ₂
2 & 4 holes type: 4 holes	☐: A3, B4 JIS, 11 × 17
2 & 4 holes type: 4 holes	☐: A4, B5 JIS, 8 ¹ / ₂ × 11, 7 ¹ / ₄ × 10 ¹ / ₂
4 holes type: 4 holes	☐: A3, B4 JIS, A4, B5 JIS, A5, 11 × 17, 8 ¹ / ₂ × 14, 8 ¹ / ₂ × 11, 5 ¹ / ₂ × 8 ¹ / ₂ , 7 ¹ / ₄ × 10 ¹ / ₂ , 8 × 13, 8 ¹ / ₂ × 13, 8 ¹ / ₄ × 13
4 holes type: 4 holes	☐: A4, B5 JIS, A5, 8 ¹ / ₂ × 11, 7 ¹ / ₄ × 10 ¹ / ₂ , 5 ¹ / ₂ × 8 ¹ / ₂

Punch unit type	Paper size
2 & 3 holes type: 2 holes	☐: A3, B4 JIS, A4, B5 JIS, A5, 11×17 , $8\frac{1}{2} \times 14$, $8\frac{1}{2} \times 11$, $5\frac{1}{2} \times 8\frac{1}{2}$, $7\frac{1}{4} \times 10\frac{1}{2}$, 8×13 , $8\frac{1}{2} \times 13$, $8\frac{1}{4} \times 13$
2 & 3 holes type: 2 holes	☐: A4, B5 JIS, A5, $8\frac{1}{2} \times 11$, $7\frac{1}{4} \times 10\frac{1}{2}$, $5\frac{1}{2} \times 8\frac{1}{2}$
2 & 3 holes type: 3 holes	☐: A3, B4 JIS, 11×17
2 & 3 holes type: 3 holes	☐: A4, B5 JIS, $8\frac{1}{2} \times 11$, $7\frac{1}{4} \times 10\frac{1}{2}$

Paper weight:

52 - 105 g/m², 14 - 28 lb.

Specifications for Paper Trays (Optional)

This section describes specifications for paper trays.

Specifications for Lower Paper Tray (Optional)

This section describes specifications for the lower paper tray.

Paper size:

A3, B4 JIS, A4, B5 JIS, A5, 11 × 17, 8 1/2 × 14, 8 1/2 × 11, 8 1/2 × 13, 8 1/4 × 13, 8 × 13, 5 1/2 × 8 1/2, 7 1/4 × 10 1/2, 8 1/4 × 14, 8 × 10 1/2, 8 × 10, 11 × 15, 10 × 14

Paper weight:

60 - 256 g/m², 16 - 68 lb.

Paper capacity (80 g/m², 20 lb.):

550 sheets × 1 tray

Power consumption:

Maximum 50 W (Power is supplied from the main unit.)

Dimensions (W × D × H):

580 × 620 × 120 mm, 22.9 × 24.5 × 4.8 inches

Weight:

Approx. 15 kg, 33.1 lb.

Specifications for Lower Paper Trays (Optional)

This section describes specifications for the lower paper trays.

Paper size:

A3, B4 JIS, A4, B5 JIS, A5, 11 × 17, 8 1/2 × 14, 8 1/2 × 11, 8 1/2 × 13, 8 1/4 × 13, 8 × 13, 5 1/2 × 8 1/2, 7 1/4 × 10 1/2, 8 1/4 × 14, 8 × 10 1/2, 8 × 10, 11 × 15, 10 × 14

Paper weight:

60 - 256 g/m², 16 - 68 lb.

Paper capacity (80 g/m², 20 lb.):

550 sheets × 2 trays

Power consumption:

Maximum 50 W (Power is supplied from the main unit.)

Dimensions (W × D × H):

580 × 620 × 260 mm, 22.9 × 25.6 × 10.3 inches

Weight:

Approx. 26 kg, 57.4 lb.

Specifications for Tray 3 (LCT) (Optional)

This section describes specifications for the tray 3 (LCT).

Paper size:

A4□, 8¹/₂ × 11□

Paper weight:

60 - 256 g/m², 16 - 68 lb.

Paper capacity (80 g/m², 20 lb.):

1,000 sheets × 2 trays

Power consumption:

Maximum 50 W (Power is supplied from the main unit.)

Dimensions (W × D × H):

580 × 650 × 260 mm, 22.9 × 25.6 × 10.3 inches

Weight:

Approx. 26 kg, 57.4 lb.

Specifications for Large capacity tray (LCT) (Optional)

9

This section describes specifications for the large capacity tray (LCT).

Paper size:

A4□, 8¹/₂ × 11□

Paper weight:

60 - 256 g/m², 16 - 68 lb.

Paper capacity (80 g/m², 20 lb.):

1,200 sheets

Power consumption:

Maximum 55 W (Power is supplied from the main unit.)

Dimensions (W × D × H):

348 × 540 × 290 mm, 13.8 × 21.3 × 11.5 inches

Weight:

Approx. 14 kg, 30.9 lb.

Specifications for Bridge Unit (Optional)

This section describes specifications for the bridge unit.

Stack capacity (80 g/m², 20 lb.):

- 250 sheets: A4, 8¹/₂ × 11 or smaller
- 125 sheets: B4 JIS, 8¹/₂ × 14 or larger

Power consumption:

Approx. 10 W (Power is supplied from the main unit.)

Dimensions (W × D × H):

415 × 412 × 111 mm, 16.4 × 16.3 × 4.4 inches

Weight:

Approx. 4 kg, 8.9 lb.

Specifications for Internal Tray 2 (Optional)

This section describes specifications for the internal tray 2 (1 bin tray).

Number of bins:

1

Paper size:

A3, B4 JIS, A4, B5 JIS, A5, 11 × 17, 8¹/₂ × 14, 8¹/₂ × 11, 5¹/₂ × 8¹/₂, 7¹/₄ × 10¹/₂, 8¹/₂ × 13, 8¹/₄ × 14, 8¹/₄ × 13, 8 × 13, 8 × 10, 11 × 14, 11 × 15, 10 × 14, 10 × 15, 8K, 16K, custom size

Paper weight:

60 - 105 g/m², 16 - 28 lb.

Paper capacity (80 g/m², 20 lb.):

125 sheets

Power consumption:

Approx. 10 W (Power is supplied from the main unit.)

Dimensions (W × D × H):

565 × 410 × 115 mm, 22.3 × 16.2 × 4.6 inches

Weight:

Approx. 2.5 kg, 5.6 lb.

Specifications for Internal Shift Tray (Optional)

This section describes specifications for the shift sort tray.

Paper capacity (80 g/m², 20 lb.):

- 250 sheets: A4, 8¹/₂ × 11 or smaller
- 125 sheets: B4 JIS, 8¹/₂ × 14 or larger

Power consumption:

Maximum 10 W (Power is supplied from the main unit.)

Dimensions (W × D × H):

423 × 468 × 114 mm, 16.7 × 18.5 × 4.5 inches

Weight:

Approx. 2 kg, 4.5 lb.

Specifications for IEEE 1284 Interface Board (Optional)

This section describes specifications for the IEEE 1284 interface board.

Transmission spec.:

IEEE 1284

Required cable:

Standard IEEE 1284 compliant Micro Centronics 36 pin cable

Specifications for Wireless LAN Board (Optional)

This section describes specifications for the wireless LAN board.

Transmission spec.:

- Based on IEEE 802.11a/b/g (wireless LAN)

Protocol:

TCP/IP, IPX/SPX, AppleTalk

Data transfer speed:

Auto select from the following speed:

1 Mbps, 2 Mbps, 5.5 Mbps, 6 Mbps, 9 Mbps, 11 Mbps, 12 Mbps, 18 Mbps, 24 Mbps, 36 Mbps, 48 Mbps, 54 Mbps

Frequency range:

- IEEE 802.11a/b/g wireless LAN:
 - 2412 - 2472 MHz (1 - 13 channels)
 - 5180 - 5320 MHz (36, 40, 44, 48, 52, 56, 60, and 64 channels)

Transmission mode:

- Ad hoc mode
- Infrastructure mode

Note

- SmartDeviceMonitor and Web Image Monitor are supported.

Specifications for Bluetooth Interface Unit (Optional)

This section describes specifications for the Bluetooth interface unit.

Supported Profiles:

- SPP (Serial Port Profile)
- HCRP (Hardcopy Cable Replacement Profile)
- BIP (Basic Imaging Profile)

Frequency Range:

2.45 GHz ISM band

Data Transmission Speed:

723 kbps

Maximum Range:

10 m

Note

- The transmission speed is adjusted according to factors such as the distance and obstacles between the devices, radio signal condition and Bluetooth adaptor.

Specifications for Gigabit Ethernet (Optional)

This section describes specifications for the Gigabit Ethernet.

Interface Connector:

- Ethernet (10Base-T, 100Base-TX, 1000Base-T)

Data Transmission Speed:

- Ethernet: 1000 Mbps, 100 Mbps, 10 Mbps

Protocol:

TCP/IP, IPX/SPX, AppleTalk

Distance Between Devices:

- Ethernet: 100 m

Specifications for Other Options

This section describes specifications for other options.

Copy Data Security Unit

The Copy Data Security Unit deletes images and prints the gray ground color of the paper when the documents marked unauthorized are copied.

DataOverWriteSecurity Unit

The DataOverWriteSecurity Unit automatically overwrites the data that remains on the hard disk.

Trademarks

Adobe, Acrobat, Acrobat Reader, PostScript, and Reader are either registered trademarks or trademarks of Adobe Systems Incorporated in the United States and/or other countries.

AppleTalk, Macintosh and Mac OS are registered trademarks of Apple Inc.

The Bluetooth® word mark and logos are registered trademarks owned by Bluetooth SIG, Inc. and any use of such marks by Ricoh Company, Ltd. is under license.

Microsoft®, Windows®, Windows NT®, Windows Server®, and Windows Vista® are either registered trademarks or trademarks of Microsoft Corporation in the United States and/or other countries.

Netscape and Netscape Navigator are registered trademarks of Netscape Communications Corporation.

Novell, NetWare, NDS and NDPS are registered trademarks of Novell, Inc.

PCL® is a registered trademark of Hewlett-Packard Company.

PowerPC® is a trademark of International Business Machines Corporation in the United States, other countries, or both.

UNIX is a registered trademark in the United States and other countries, licensed exclusively through X/Open Company Limited.

Other product names used herein are for identification purposes only and might be trademarks of their respective companies. We disclaim any and all rights to those marks.

The proper names of the Windows operating systems are as follows:

- The product names of Windows 2000 are as follows:

Microsoft® Windows® 2000 Professional

Microsoft® Windows® 2000 Server

Microsoft® Windows® 2000 Advanced Server

- The product names of Windows XP are as follows:

Microsoft® Windows® XP Professional

Microsoft® Windows® XP Home Edition

Microsoft® Windows® XP Media Center Edition

Microsoft® Windows® XP Tablet PC Edition

- The product names of Windows Vista are as follows:

Microsoft® Windows Vista® Ultimate

Microsoft® Windows Vista® Enterprise

Microsoft® Windows Vista® Business

Microsoft® Windows Vista® Home Premium

Microsoft® Windows Vista® Home Basic

- The product names of Windows Server 2003 are as follows:

Microsoft® Windows Server® 2003 Standard Edition

Microsoft® Windows Server® 2003 Enterprise Edition

Microsoft® Windows Server® 2003 Web Edition

Microsoft® Windows Server® 2003 Datacenter Edition

- The product names of Windows Server 2003 R2 are as follows:

Microsoft® Windows Server® 2003 R2 Standard Edition

Microsoft® Windows Server® 2003 R2 Enterprise Edition

Microsoft® Windows Server® 2003 R2 Datacenter Edition

INDEX

1 bin tray.....58, 60, 178

A

About the guide on the internal tray 2.....56
Access to the machine.....135
Adding staples.....104
Adding toner.....101
Address book.....17
ADF.....20, 51, 54, 159
Adhesive labels.....88
Adjusting colors.....11
Adjusting image qualities.....11
Alert indicator.....63
Authentication screen.....67
Auto document feeder.....20, 51, 54
Auto Off.....76
Auto Reduce/Enlarge.....11
Available characters.....115

B

Bluetooth interface unit.....60, 182
Booklet.....11
Booklet Finisher.....166
Booklet Finisher SR3000.....58, 106
Booklet Finisher SR3020.....60, 107, 108
Bridge unit.....58, 60, 177
Browser Unit.....60
Bypass tray.....52, 55, 88, 96

C

Caster Table for Lower paper tray.....58
CAUTION.....27, 33
CD-ROM.....119, 120, 121, 122, 141
Changing modes.....71
Changing Paper Thickness Settings.....127
Changing the Display Language.....123
Changing the paper size.....83
Changing the paper size in the paper trays.....83
Changing to a size that is not automatically Detected.....85
Check.....48
Cleaning the auto document feeder.....137
Cleaning the Dustproof Glass.....138

Cleaning the exposure glass.....137
Clear Modes key.....62
Clear/Stop key.....63
Collate.....12
Color.....48
Color copy.....11, 132
Colors.....19
Combine.....11
Communicating indicator.....63
Components.....51
Computer.....17
Confidential File indicator.....63
Contents of the CD-ROM.....141
Control panel.....52, 54, 62, 67, 68, 69
Copier.....11, 71
Copy Data Security Unit.....17, 60, 184
Copy speed.....22
Counter.....129
Counterfeit bank bills.....19

D

Data In indicator.....63
DataOverWriteSecurity Unit.....16, 60, 184
Deleting characters.....116
DeskTopBinder.....12, 13
DeskTopBinder Lite.....144
DeskTopBinder-SmartDeviceMonitor for Client.....141, 146
Display panel.....23, 62, 65
Displaying the Total Counter.....129
Document Server.....12, 71
Document Server for Type 1 and 2.....157
Document Server for Type 3 and 4.....158
Dos and Don'ts.....131
Duplex.....11
Duplex priority.....40

E

E-mail Transmission.....14
Energy Saver.....76
Energy Saver key.....63
Energy Saving Functions.....41
ENERGY STAR Program.....40
Energy-saving.....40

Enlarge.....	11
Enter key (# key).....	64
Entering letters.....	116
Entering text.....	115, 116
Entry screen.....	115
Envelope.....	49
Envelopes.....	11, 94
Environments to avoid.....	134
Environments where the machine can be used.....	27
Ethernet.....	13, 183
Exposure glass.....	51, 54
Extender.....	52, 55
External options.....	57
Extra G3 Interface Unit.....	60

F

Facsimile.....	13, 14, 15, 71
Fax unit.....	60
FCC Rules.....	24
File Format Converter.....	12, 60
Finisher.....	161
Finisher Booklet Tray (Booklet Finisher SR3000).....	169
Finisher Booklet Tray (Booklet Finisher SR3020).....	167
Finisher Shift Tray (Booklet Finisher SR3000).....	168
Finisher Shift Tray (Booklet Finisher SR3020).....	166
Finisher Shift Tray (Finisher SR3030).....	163
Finisher Shift Tray (Finisher SR790).....	161
Finisher SR3010.....	58, 104
Finisher SR3030.....	60, 109
Finisher SR790.....	58, 60, 105
Finisher Upper Tray (Booklet Finisher SR3000).....	168
Finisher Upper Tray (Booklet Finisher SR3020).....	166
Finisher Upper Tray (Finisher SR3030).....	162
Finisher Upper Tray (Finisher SR790).....	161
Font Manager.....	141
Front Cover.....	52, 54
Function keys.....	62

G

Gigabit Ethernet.....	183
Gigabit Ethernet (1000BASE-T).....	60
Grain.....	96
Guide to components of type 1 and 2.....	51
Guide to components of type 3 and 4.....	53

H

Handling power cords.....	28
Handling power plugs.....	28
Handling the machine's interior.....	30
Handling the machine's supplies.....	31
Handling the main machine.....	29
HDD Encryption Unit.....	60
Hold Print.....	12
How to enter text.....	116
How to use the operating instructions.....	121
HTML manuals.....	10, 119, 121

I

IEEE 1284 interface board.....	180
IEEE 1284 Interface Board.....	60
Important.....	19
Important symbols.....	27
Inquiry.....	125
Install.....	49
Installing operating instructions.....	119
Internal options.....	60
Internal shift tray.....	57, 59, 179
Internal Tray 1.....	52, 54
Internal tray 2.....	58, 60, 178
Internet Fax.....	14
Interrupt key.....	63
IP-Fax.....	14
Items.....	20

K

Key arrangement.....	115
Key Color.....	66

L

Label paper (adhesive labels).....	88
LAN-Fax.....	13, 143
LAN-Fax driver.....	143

Large capacity tray.....	20	Notes on lamp(s) inside this machine.....	25
Large capacity tray (LCT).....	58, 59, 79, 90	Notice.....	19
LCT.....	20, 90	Number keys.....	63
Legal prohibition.....	19	O	
Loading paper.....	77	Off mode.....	40
Loading paper into the large capacity tray (LCT).....	79	OHP transparencies.....	11, 88
Loading paper into the paper trays.....	77	Opening manuals from the [Start] menu.....	121
Loading paper into the tray 3 (LCT).....	78	Opening manuals from the CD-ROM.....	122
Local connection.....	12	Opening manuals from the icon.....	121
Locked Print.....	12	Operating instructions.....	121
Login.....	68, 70	Operation switch.....	52, 55, 63, 73
Login/Logout key.....	64	Optimum environmental conditions.....	134
Logout.....	69, 70	Options.....	57, 60, 184
Low Power mode.....	40, 41	Orientation-fixed paper or two-sided paper.....	81
Lower paper tray.....	58	P	
lower paper trays.....	88	Paper.....	47, 77
Lower paper trays.....	58, 59	Paper grain.....	96
Lower Paper Trays.....	52, 55	Paper setting direction.....	96
Lower Right Cover.....	53, 55	Paper sizes.....	88
M		Paper storage.....	99
Machine environment.....	133	Paper trays.....	52, 54, 96
Machine types.....	22	Paper types.....	88
Magazine.....	11	Paperless fax reception.....	13
Mail to Print.....	14	Paperless fax transmission.....	13
Main power.....	73, 75	Password.....	16
Main power indicator.....	63	PCL.....	141
Main power switch.....	52, 54, 73	PDF manuals.....	10, 120
Maintaining your machine.....	137	PictBridge card.....	60
Manuals.....	119, 120, 121, 122, 141	Plain Paper Setting.....	123
Manuals for this machine.....	8	Positions of WARNING and CAUTION labels for users of type 1 and 2.....	33
Manuals list.....	10	Positions of WARNING and CAUTION labels for users of type 3 and 4.....	36
Media slot.....	57, 59	PostScript.....	141
Moving.....	133	Power.....	73, 74
N		Power connection.....	135
Names of major Items.....	20	Power supply.....	73
Network.....	15	PPD.....	141
Network connection.....	12	Preventing an unauthorized copy.....	17
Network delivery scanner.....	15	Print speed.....	22
Note.....	24, 26	Printed manuals.....	10
Note to users.....	24	Printer.....	12, 71
Note to users in the state of California.....	26		

Printer driver.....	68, 70, 141
Printer Drivers and Utilities.....	141, 143, 145, 146
Printer Utility for Mac.....	141
Printing a PDF file directly.....	12
Printing with the finisher.....	12
Program key.....	63
Punch.....	11, 12
Punch Kit.....	171

R

Receiving File indicator.....	63
Recommended paper sizes and types.....	88
Reduce.....	11
Register/Change/Delete.....	47
Replacing the stamp cartridge.....	111
Replacing Toner.....	102
RPCS.....	141

S

Safety during operation.....	27
Safety information.....	27
Safety Labels of This Machine.....	33
Safety precautions to be followed.....	27
Sample Copy key.....	64
Sample Print.....	12
Saving color copies.....	132
Saving paper.....	11
Scanner.....	15, 71
Scanner Accessibility Unit.....	59
Scanner Driver and Utilities.....	141, 143, 144
ScanRouter.....	15
Searching by Keyword.....	47
Searching by what you want to do.....	43
Security functions.....	16
Sending faxes or scanned documents when toner has run out.....	103
Sending scan files by e-mail.....	15
Sending scan files by Scan to Folder.....	15
Simplified Display.....	65
Simplified Display key.....	64, 65
Sleep mode.....	40, 41
SmartDeviceMonitor for Admin.....	17, 141, 145
SmartDeviceMonitor for Client.....	144, 146
Software included on the CD-ROM.....	141

Sort.....	11
Specifications.....	184
Specifications for Auto Document Feeder.....	159
Specifications for Auto Document Feeder (ARDF DF3010).....	159
Specifications for Auto Document Feeder (ARDF DF3030).....	159
Specifications for Bluetooth interface unit.....	182
Specifications for Booklet Finisher.....	166
Specifications for Booklet Finisher SR3000 (1000-sheet-Booklet).....	168
Specifications for Booklet Finisher SR3020 (2000-sheet-Booklet).....	166
Specifications for Bridge Unit.....	177
Specifications for Finisher SR3010 (500-sheet).....	164
Specifications for Finisher SR3030 (3000-sheet).....	162
Specifications for Finisher SR790 (1000-sheet).....	161
Specifications for Finishers.....	161
Specifications for Gigabit Ethernet.....	183
Specifications for IEEE 1284 interface board.....	180
Specifications for Internal shift tray.....	179
Specifications for internal tray 2.....	178
Specifications for Large capacity tray (LCT).....	175
Specifications for Lower Paper Tray.....	174
Specifications for Lower Paper Trays.....	174
Specifications for Paper Trays.....	174
Specifications for Punch Kit.....	171
Specifications for Punch Kit (Booklet Finisher SR3000).....	172
Specifications for Punch Kit (Finisher SR3030, Booklet Finisher SR3020).....	171
Specifications for the Main Unit.....	148
Specifications for the main unit for users of type 1 and 2.....	148
Specifications for the main unit for users of type 3 and 4.....	152
Specifications for Tray 3 (LCT).....	175
Specifications for wireless LAN board.....	181
Stamp.....	11
Stamp cartridge.....	111
Staple.....	11, 12
Staples.....	104

Start key.....	64	Wireless LAN board.....	60, 181
Stored Print.....	12		
Storing paper.....	99		
Storing received documents.....	13		
Symbols.....	20		
System Reset.....	72		

T

Text.....	115, 116
Thick paper.....	88, 96
Thin paper.....	88
Toner.....	101
Trademarks.....	185
Translucent paper.....	88
Tray 1.....	52, 54, 88
Tray 2.....	52, 54, 88
Tray 3.....	54, 58, 59
Tray 3 (LCT).....	78, 90
Turning off the main power.....	75
Turning off the power.....	73, 74
Turning on the main power.....	73
Turning on the power.....	73, 74
TWAIN driver.....	143

U

Unauthorized copy prevention.....	17
Unusable paper.....	98
Used toner.....	103
User Code Authentication.....	67, 68
User Text.....	117
User Tools/Counter key.....	62
Using the Print Job function.....	12
Utilities included on the CD-ROM.....	141

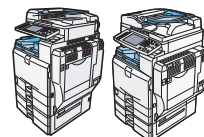
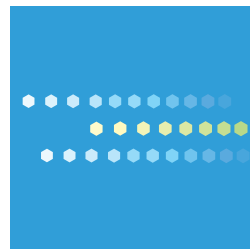
V

Ventilation holes.....	51, 52, 53, 54, 55, 56
Viewing the contents of the CD-ROM.....	141
VM card.....	60

W

WARNING.....	27, 33
Web Image Monitor.....	12, 13, 17, 70
Where to put your machine.....	133
Wireless LAN.....	13, 181

MEMO



Type for C2828/MP C2800/LD528C/Aficio MP C2800
Type for C3333/MP C3300/LD533C/Aficio MP C3300
Type for C4040/MP C4000/LD540C/Aficio MP C4000
Type for C5050/MP C5000/LD550C/Aficio MP C5000
Type for C2828G/LD528CG/Aficio MP C2800G
Type for C3333G/LD533CG/Aficio MP C3300G
Type for C4040G/LD540CG/Aficio MP C4000G
Type for C5050G/LD550CG/Aficio MP C5000G