

Safety Information

Introduction

This manual contains detailed instructions and notes on the operation and use of this machine. For your safety and benefit, read this manual carefully before using the machine. Keep this manual in a handy place for quick reference.

Power Source

120V-127 V, 11A or less, 60 Hz
Please be sure to connect the power cord to a power source as above.

Safety Information for this Machine

This chapter describes the safety precautions.

Safety Symbols for This Machine

The meanings of the safety symbols for this machine are as follows:

 Caution	 Do not use the cleaner
 Do not touch	 Keep out of reach of children
 Do not throw into the fire	 Caution, risk of having hands or arms caught
 Do not throw into the fire	

Safety During Operation

This section explains the machine's safety information labels.

⚠ WARNING:

- *Indicates a potentially hazardous situation which, if instructions are not followed, could result in death or serious injury.*

⚠ CAUTION:

- *Indicates a potentially hazardous situation which, if instructions are not followed, may result in minor or moderate injury or damage to property.*

Environments Where the Machine Can be Used

⚠ WARNING:

- *Do not use flammable sprays or solvents in the vicinity of this machine. Also, avoid placing these items in the vicinity of this machine. Doing so could result in fire or electric shock.*
- *Do not place vases, plant pots, cups, toiletries, medicines, small metal objects, or containers holding water or any other liquids, on or close to this machine. Fire or electric shock could result from spillage or if such objects or substances fall inside this machine.*

⚠ CAUTION:

- *Keep the machine away from humidity and dust. Otherwise a fire or an electric shock might occur.*
- *Do not place the machine on an unstable or tilted surface. If it topples over, an injury might occur.*
- *Do not place heavy objects on the machine. Doing so can cause the machine to topple over, possibly resulting in injury.*
- *Make sure the room where you are using the machine is well ventilated and spacious. Good ventilation is especially important when the machine is used heavily.*
- *Keep the machine in an area that is within optimum environmental conditions. Operating the machine in an environment that is outside the recommended ranges*

English

English

English

English

English

English

English

English

English

English

English

English

English

English

English

English

of humidity and temperature can cause an electrical fire hazard. Keep the area around the socket free of dust. Accumulated dust can become an electrical fire hazard.

- Do not obstruct the machine's vents. Doing so risks fire caused by overheated internal components.

Handling Power Cords and Power Plugs

⚠ WARNING:

- Do not use any power sources other than those that match the specifications shown in this manual. Doing so could result in fire or electric shock.
- Do not use any frequencies other than those that match the specifications shown. Doing so could result in fire or electric shock.
- Do not use multi-socket adaptors. Doing so could result in fire or electric shock.
- Do not use extension cords. Doing so could result in fire or electric shock.
- Do not use power cords that are damaged, broken, or modified. Also, do not use power cords that have been trapped under heavy objects, pulled hard, or bent severely. Doing so could result in fire or electric shock.
- Touching the prongs of the power cable's plug with anything metallic constitutes a fire and electric shock hazard.
- The supplied power cord is for use with this machine only. Do not use it with other appliances. Doing so could result in fire or electric shock.
- It is dangerous to handle the power cord plug with wet hands. Doing so could result in electric shock.
- If the power cord is damaged and its inner wires are exposed or broken, contact your service representative for a replacement. Use of damaged power cords could result in fire or electric shock.
- Be sure to disconnect the plug from the wall outlet at least once a year and check for the following:
 - There are burn marks on the plug.
 - The prongs on the plug are deformed.
- If any of the above conditions exist,

do not use the plug and consult your dealer or service representative. Use of the plug could result in fire or electric shock.

- Be sure to disconnect the power cord from the wall outlet at least once a year and check for the following:
 - The power cord's inner wires are exposed, broken, etc.
 - The power cord's coating has a crack or dent.
 - When bending the power cord, the power turns off and on.
 - Part of the power cord becomes hot.
 - The power cord is damaged.
- If any of the above conditions exist, do not use the power cord and consult your dealer or service representative. Use of the power cord could result in fire or electric shock.

⚠ CAUTION:

- If this machine is not going to be used for several days or longer at a time, disconnect its power cord from the wall outlet.
- When performing maintenance on the machine, always disconnect the power cord from the wall outlet.
- When disconnecting the power cord from the wall outlet, always pull the plug, not the cord. Pulling the cord can damage the power cord. Use of damaged power cords could result in fire or electric shock.
- Be sure to disconnect the plug from the wall outlet and clean the prongs and the area around the prongs at least once a year. Allowing dust to build up on the plug constitutes a fire hazard.
- Be sure to push the plug of the power cord fully into the wall outlet. Partially inserted plugs create an unstable connection that can result in unsafe buildup of heat.

Handling the Machine

⚠ WARNING:

- Be sure to locate the machine as close as possible to a wall outlet. This will allow easy disconnection of the power cord in the event of an emergency.
- If the machine emits smoke or odours, or if it behaves unusually, you must turn off its power immediately. After turning off the power, be sure to disconnect the power cord plug from the wall outlet. Then contact your service

representative and report the problem. Do not use the machine. Doing so could result in fire or electric shock.

- If metal objects, or water or other fluids fall inside this machine, you must turn off its power immediately. After turning off the power, be sure to disconnect the power cord plug from the wall outlet. Then contact your service representative and report the problem. Do not use the machine. Doing so could result in fire or electric shock.
- Do not touch this machine if a lightning strike occurs in the immediate vicinity. Doing so could result in electric shock.
- The following explains the warning messages on the plastic bag used in this product's packaging.
 - Keep the polythene materials (bags, gloves, etc.) supplied with this machine away from babies and small children at all times. Suffocation can result if polythene materials are brought into contact with the mouth or nose.

⚠ CAUTION:

- Be careful not to trap your fingers when opening or closing the cover.
- Unplug the power cord from the wall outlet before you move the machine. While moving the machine, take care that the power cord is not damaged under the machine. Failing to take these precautions could result in fire or electric shock.
- If you have to move the machine when the optional paper tray unit is attached, do not push on the main unit's top section. Doing so can cause the optional paper tray unit to detach, possibly resulting in injury.
- When moving the machine, use the inset grips on both sides, and lift it up slowly. The machine may break or cause injury if dropped.
 - SP C262DNw weighs approximately 23.8 kg (52.5 lb.).
 - SP C262SFNw weighs approximately 30 kg (66.2 lb.).
- Do not look into the lamp. It can damage your eyes.

Handling the Machine's Interior

⚠ WARNING:

- Do not remove any covers or screws other than those explicitly mentioned

in this manual. Inside this machine are high voltage components that are an electric shock hazard and laser components that could cause blindness. Contact your sales or service representative if any of the machine's internal components require maintenance, adjustment, or repair.

- Do not attempt to disassemble or modify this machine. Doing so risks burns and electric shock. Note again that exposure to the laser components inside this machine risks blindness.

⚠ CAUTION:

- Some of this machine's internal components get very hot. For this reason, take care when removing misfed paper. Not doing so could result in burns.
- When removing jammed paper, make sure not to trap or injure your fingers.
- When loading paper, take care not to trap or injure your fingers.
- While safety measures have been installed to prevent accidents, you must not touch the machine's rollers while it is operating. Doing so could cause injury.

Handling the Machine's Supplies

⚠ WARNING:

- Do not incinerate toner (new or used) or toner containers. Doing so risks burns. Toner will ignite on contact with naked flame.
- Do not store toner (new or used) or toner containers anywhere near naked flames. Doing so risks fire and burns. Toner will ignite on contact with naked flame.
- Do not use a vacuum cleaner to remove spilled toner (including used toner). Absorbed toner may cause a fire or explosion due to electrical contact flickering inside the vacuum cleaner. However, it is possible to use a vacuum cleaner that is explosion-proof and dust ignition-proof. If toner is spilled on the floor, remove the spilled toner slowly using a wet cloth, so that the toner is not scattered.
- The following explains the warning messages on the plastic bag used in this product's packaging.
 - Keep the polythene materials (bags, gloves, etc.) supplied with this machine away from babies and small

English

English

English

English

English

English

English

English

English

English

English

English

English

English

English

English

English

children at all times. Suffocation can result if polythene materials are brought into contact with the mouth or nose.

⚠ CAUTION:

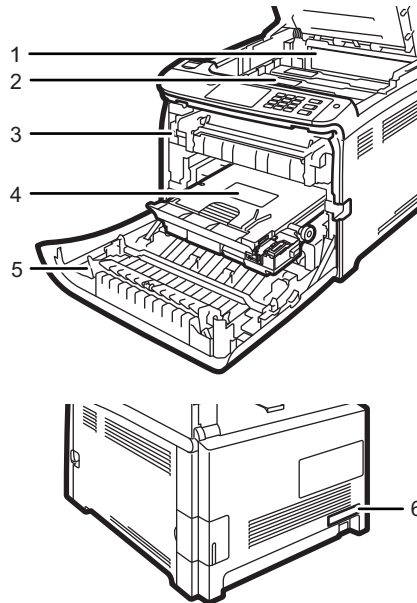
- Store toner (new or used), toner containers, and components that have been in contact with toner out of reach of children.
- If toner or used toner is inhaled, gargle with plenty of water and move into a fresh air environment. Consult a doctor if necessary.
- If toner or used toner gets into your eyes, flush immediately with large amounts of water. Consult a doctor if necessary.
- If toner or used toner is swallowed, dilute by drinking a large amount of water. Consult a doctor if necessary.
- When removing jammed paper or replacing toner, avoid getting toner (new or used) on your clothing. If toner comes into contact with your clothing, wash the stained area with cold water. Hot water will set the toner into the fabric and make removing the stain impossible.
- When removing jammed paper or replacing toner, avoid getting toner (new or used) on your skin. If toner comes into contact with your skin, wash the affected area thoroughly with soap and water.
- Do not crush or squeeze toner containers. Doing so can cause toner spillage, possibly resulting in dirtying of skin, clothing, and floor, and accidental ingestion.
- When replacing a toner or waste toner container or consumables with toner, make sure that the toner does not splatter. Put the waste consumables in a bag after they are removed. For consumables with a lid, make sure that the lid is shut.
- Do not attempt to print on stapled sheets, aluminum foil, carbon paper, or any kind of conductive paper. Doing so risks fire.
- Keep SD cards or USB flash memory devices out of reach of children. If a child accidentally swallows an SD card or USB flash memory device, consult a doctor immediately.
- Our products are engineered to meet high standards of quality and functionality, and we recommend that you use only the expendable supplies available at an authorized dealer.

Safety Labels of This Machine

This section explains the machine's safety information labels.

Positions of ⚠ WARNING and ⚠ CAUTION labels

This machine has labels for ⚠ WARNING and ⚠ CAUTION at the positions shown below. For safety, please follow the instructions and handle the machine as indicated.



DUE151

1.



Be careful not to trap your fingers when opening or closing the top cover.

2.



DAC464



DUE161

Do not incinerate used toner or toner containers. Toner dust might ignite when exposed to an open flame. Dispose of used toner containers in accordance with local regulations.

Do not use the cleaner to suck spilled toner (including used toner). Sucked toner may cause firing or explosion due to electrical contact flickering inside the cleaner. However, it is possible to use the cleaner designed for dust explosion-proof purpose. If toner is spilled over the floor, sweep up spilled toner slowly and clean remainder with wet cloth.

Store toner (new or used), toner containers, and components that have been in contact with toner out of reach of children.

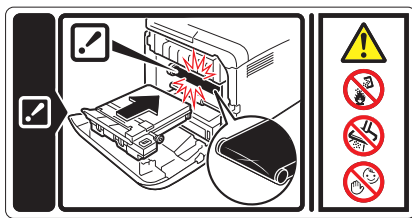
3.



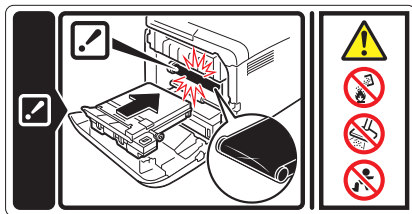
CESS03

Do not touch the labelled area indicated by 3 in the illustration above. The area can get very hot.

4.



DAC485



DUE162

Do not incinerate used toner or toner containers. Toner dust might ignite when exposed to an open flame. Dispose of used toner containers in accordance with local regulations.

Do not use the cleaner to suck spilled toner (including used toner). Sucked toner may cause firing or explosion due to electrical contact flickering inside the cleaner. However, it is possible to use the cleaner designed for dust explosion-proof purpose. If toner is spilled over the floor, sweep up spilled toner slowly and clean remainder with wet cloth.

Store toner (new or used), toner containers, and components that have been in contact with toner out of reach of children.

5.

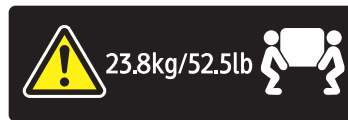


CESS02

Do not touch the labelled area indicated by 5 in the illustration above. The area can get very hot.

6.

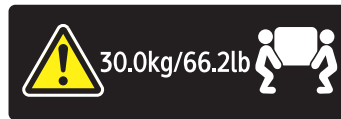
SP C262DNw



DAC502

The printer weighs approximately 23.8 kg (52.5 lb.). When moving the printer, use the inset grips on both sides, and lift slowly in pairs.

SP C262SFNw



DUE163

The machine weighs approximately 30 kg (66.2 lb.). When moving the machine, use the inset grips on both sides, and lift slowly in pairs.

English

English

English

English

English

English

English

English

English

English

English

English

English

English

English

English

Power Switch Symbols

The meanings of the symbols for the switches on this machine are as follows:

-  :STAND BY

Laws and Regulations

Legal Prohibition

Do not copy or print any item for which reproduction is prohibited by law.

Copying or printing the following items is generally prohibited by local law: bank notes, revenue stamps, bonds, stock certificates, bank drafts, checks, passports, driver's licenses.

The preceding list is meant as a guide only and is not inclusive. We assume no responsibility for its completeness or accuracy. If you have any questions concerning the legality of copying or printing certain items, consult with your legal advisor.

Laser Safety

CDRH Regulations

This machine complies with the requirements of 21 CFR Subchapter J for class 1 laser product. The machine contains multiple AlGaAs laser diodes, 6.2-milliwatt, 770-795 nanometer wavelength for each emitter. The beam divergence angle is 25 degrees (minimum) and 38 degrees (maximum) in the vertical direction, and 8 degrees (minimum) and 14 degrees (maximum) in the horizontal direction, and laser beams are generated in Continuous Wave (CW) mode.

CAUTION:

Use of controls or adjustments or performance of procedures other than those specified in this manual might result in hazardous radiation exposure.

Important Safety Instructions

When using your telephone equipment, basic safety precautions should always be followed to reduce the risk of fire, electric shock and injury to persons, including the following:

1. Do not use this product near water, for example, near a bathtub, wash bowl, kitchen sink or laundry tub, in a wet basement or near a swimming pool.
2. Avoid using a telephone (other than a cordless type) during an electrical storm. There may be a remote risk of electric shock from lightning.
3. Do not use the telephone to report a gas leak in the vicinity of the leak.
4. Use only the power cord and batteries indicated in this manual. Do not dispose of batteries in a fire. They may explode. Check with local codes for possible special disposal instructions.

SAVE THESE INSTRUCTIONS.

Notes for Using This Machine Safely

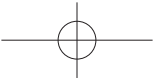
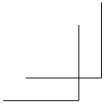
To use this machine, it is recommended you take the following measures, which include:

- Installing this machine in a network protected by a firewall.
- Specifying your private IP address.
- Changing the password for the machine administrator.

Changing the machine administrator's password can prevent the machine from being tampered by unauthorized access from the Internet.

Using a Private IP Address

An IP address is a numerical label assigned to devices connected to the network. An IP address that is used for Internet connection is a "global IP address", and an IP address that is used for network connection in a local environment such as a company is a "private IP address". If an IP address that is specified for a machine is a global IP address, unspecified numbers of Internet



users can access this machine, so that there is higher risks of information leakage through illegal access outside from the environment where this machine is located. If a private IP address is specified for a machine, however, only users within a local network such as a company LAN can access the machine. Unless there is any specific reason, specify a private IP address for a machine. An private IP address can be selected from the following address ranges:

Private IP address ranges

- 10.0.0.0-10.255.255.255
- 172.16.0.0-172.31.255.255
- 192.168.0.0-192.168.255.255

