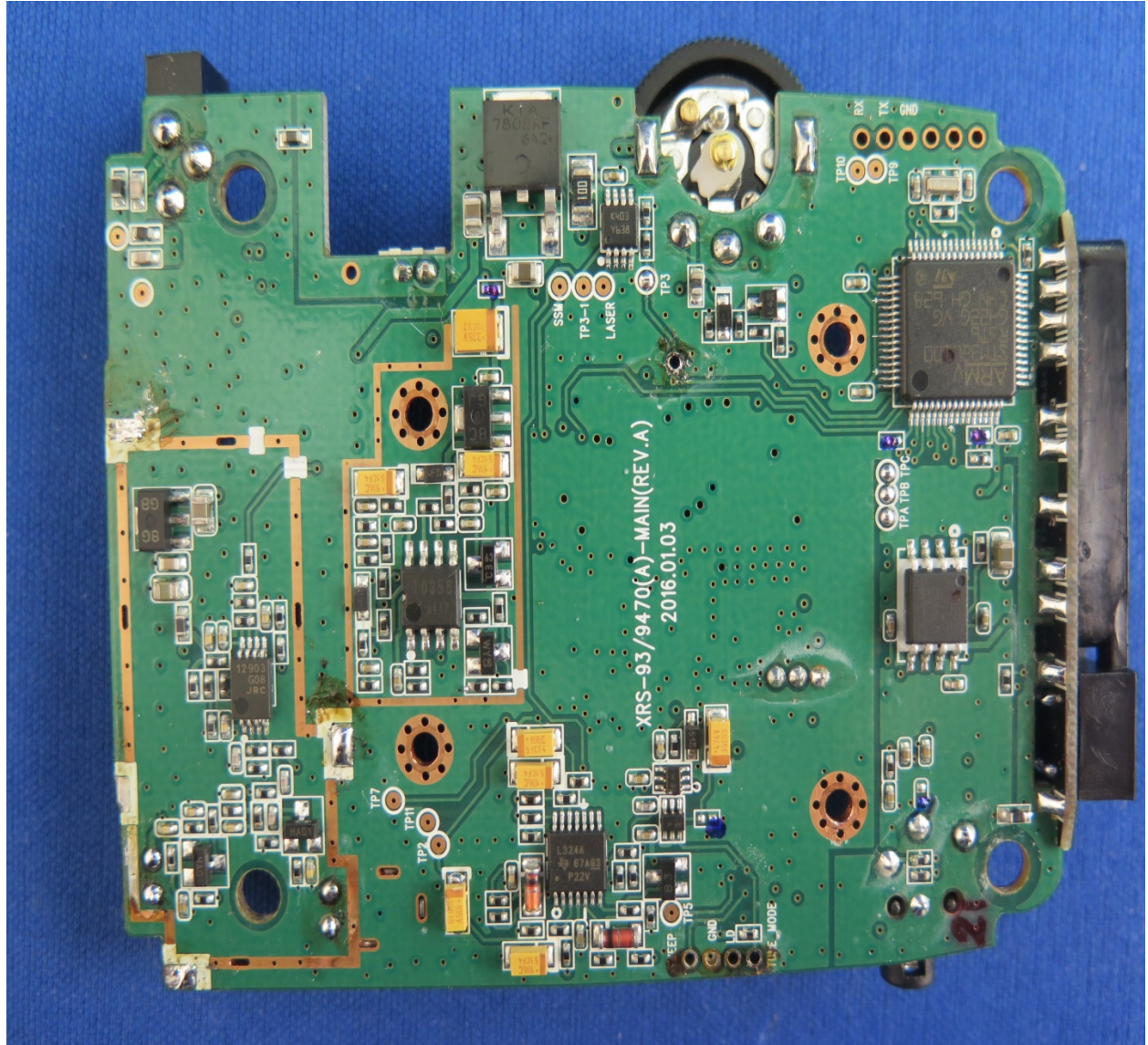


Applicant: COBRA ELECTRONICS CORPORATION

FCC ID BBOSPX955

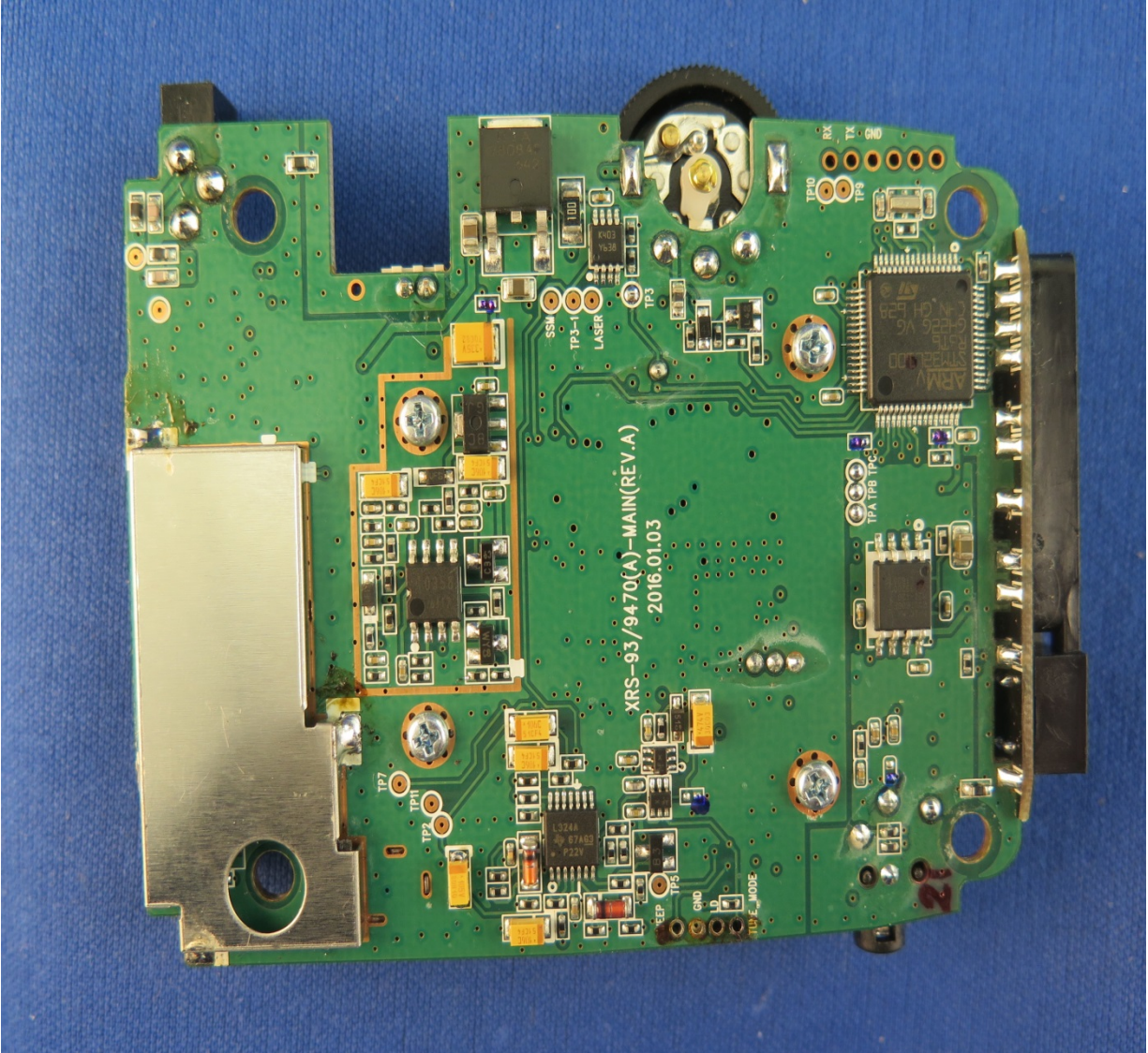
INTERNAL PHOTOS

BOTTOM PCB SHIELD REMOVED

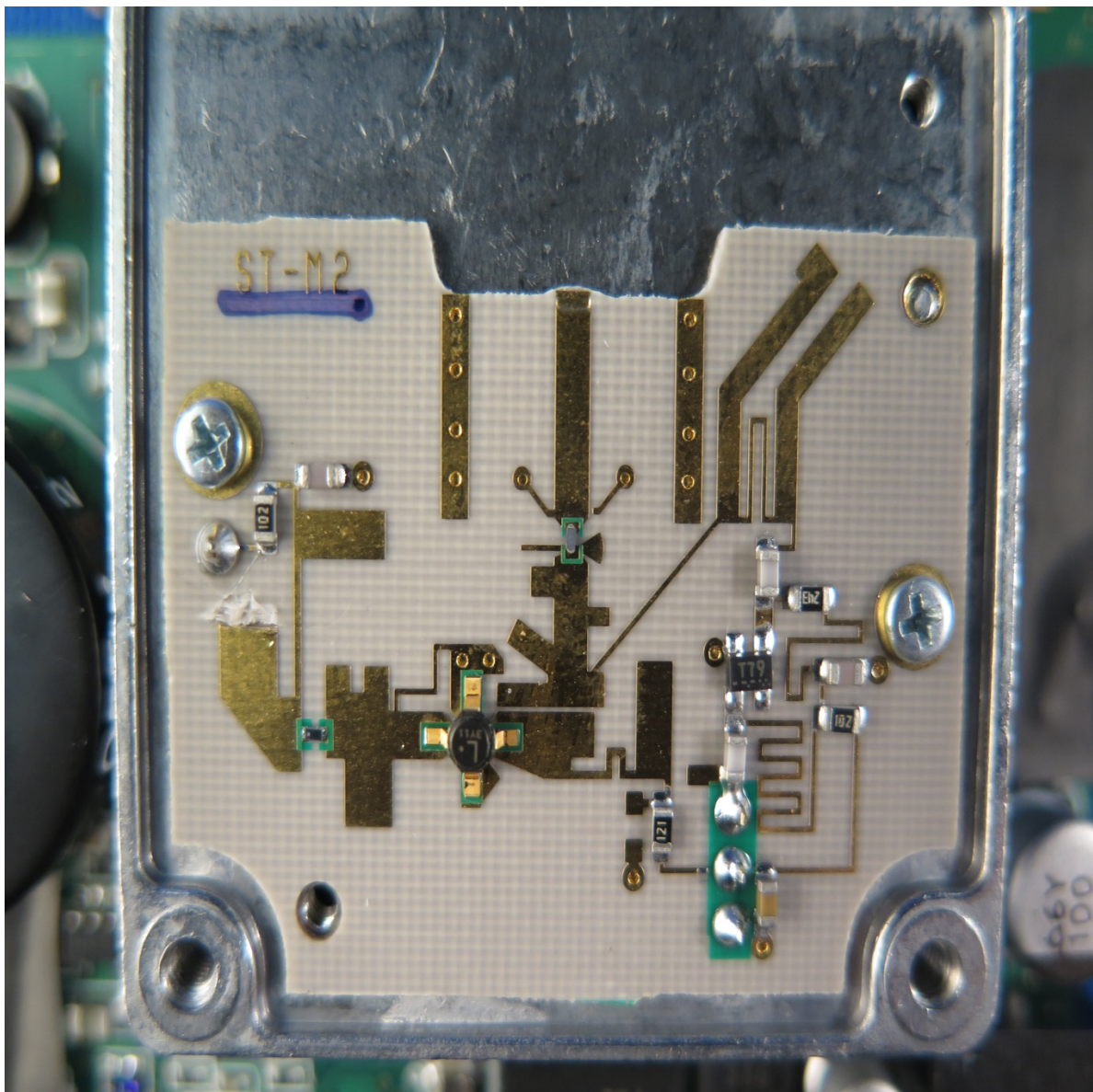




**BOTTOM PCB**

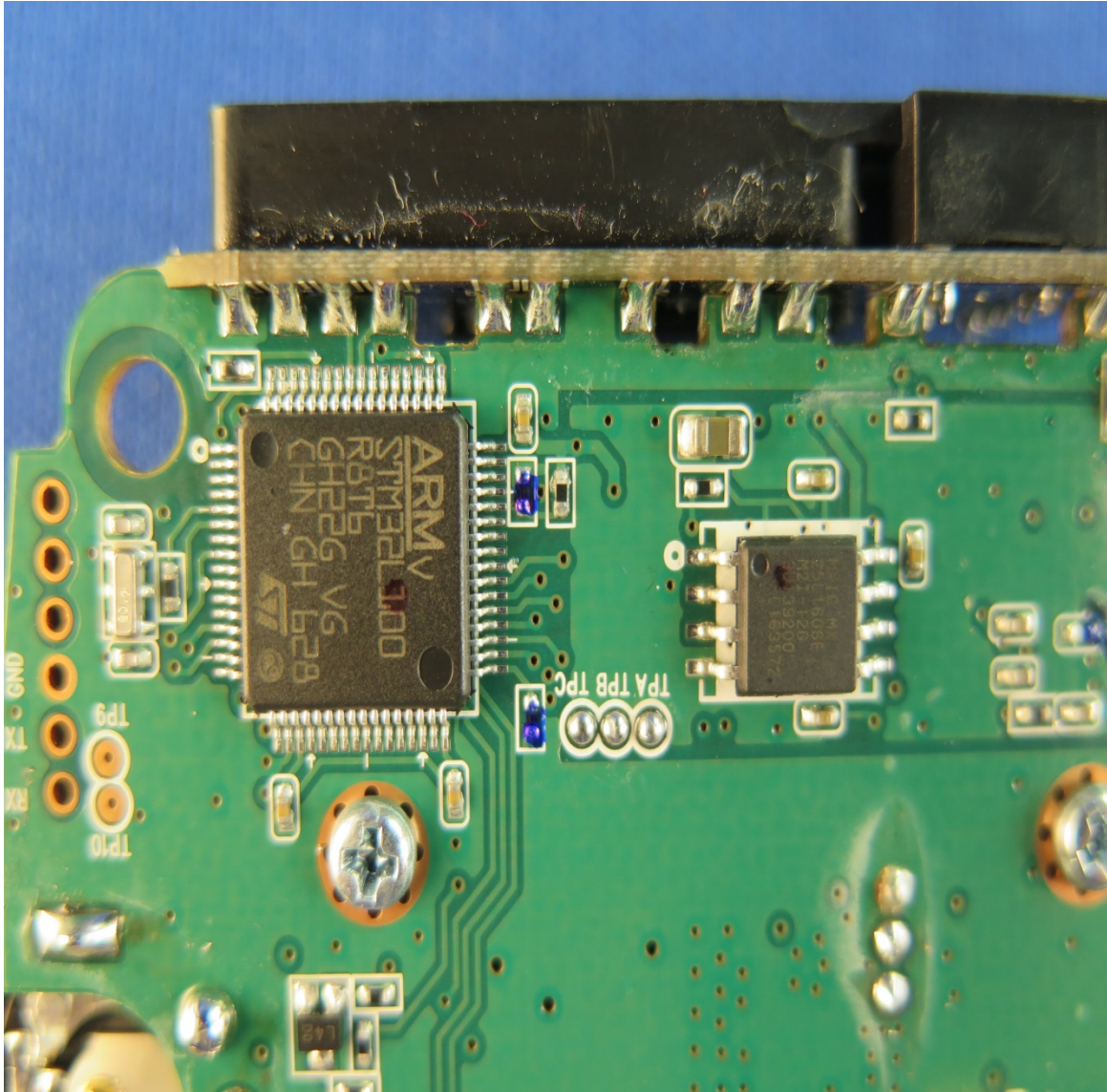


LNA INSIDE HORN

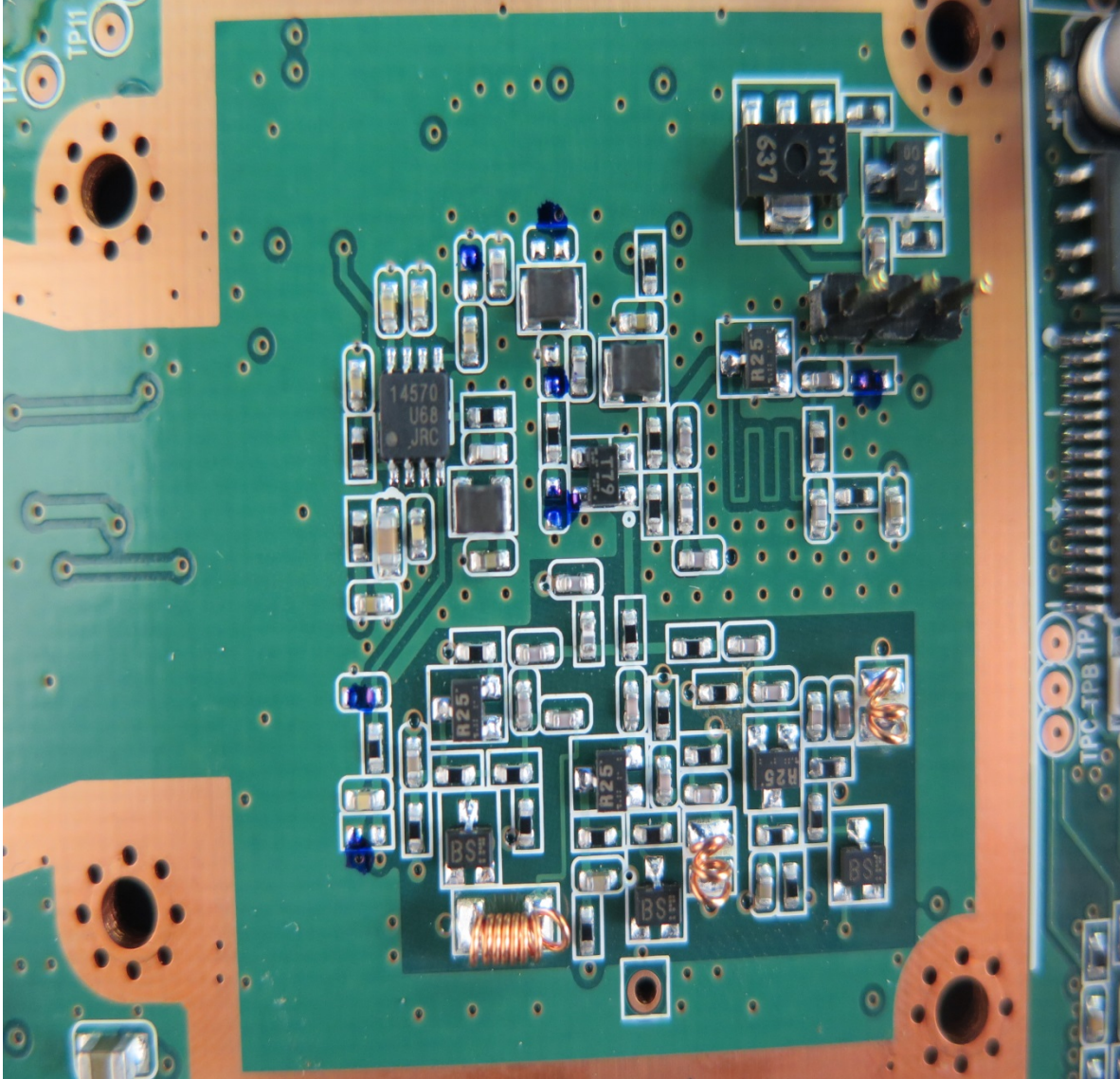




MICROPROCESSOR ZOOM IN

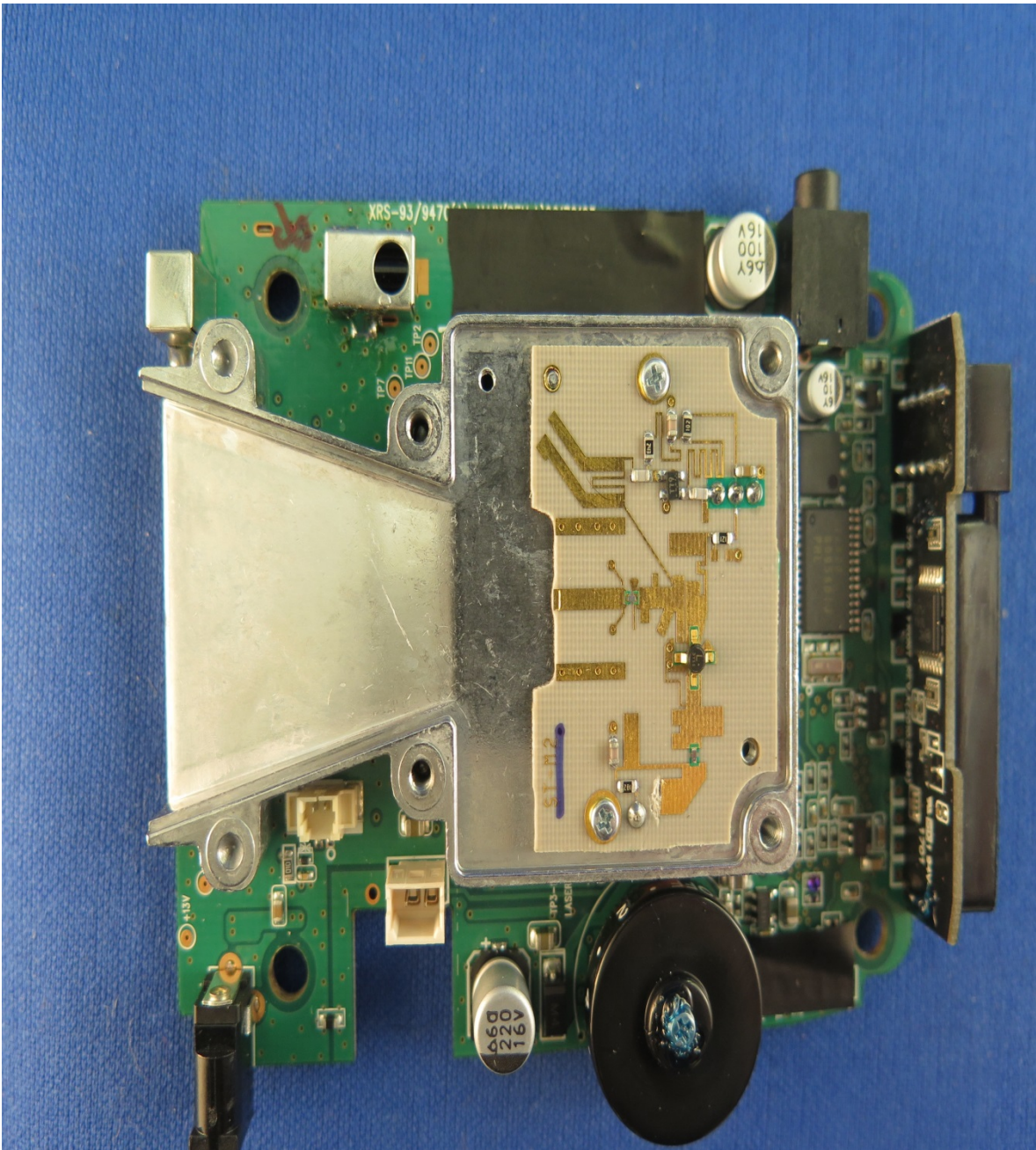


TOP PCB HORN REMOVED UP CLOSE

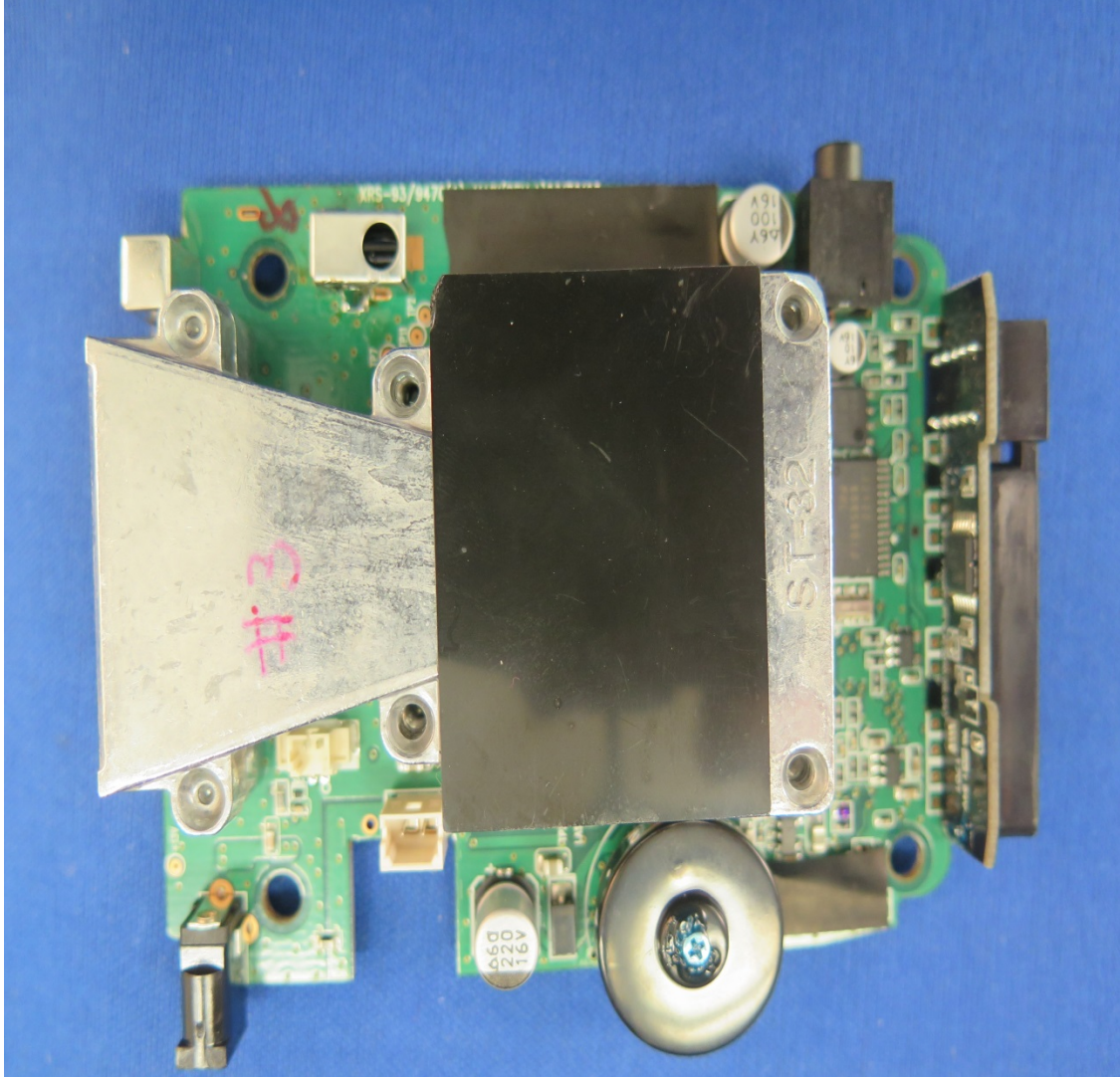




TOP PCB HORN TOP REMOVED



TOP PCB WITH HORN



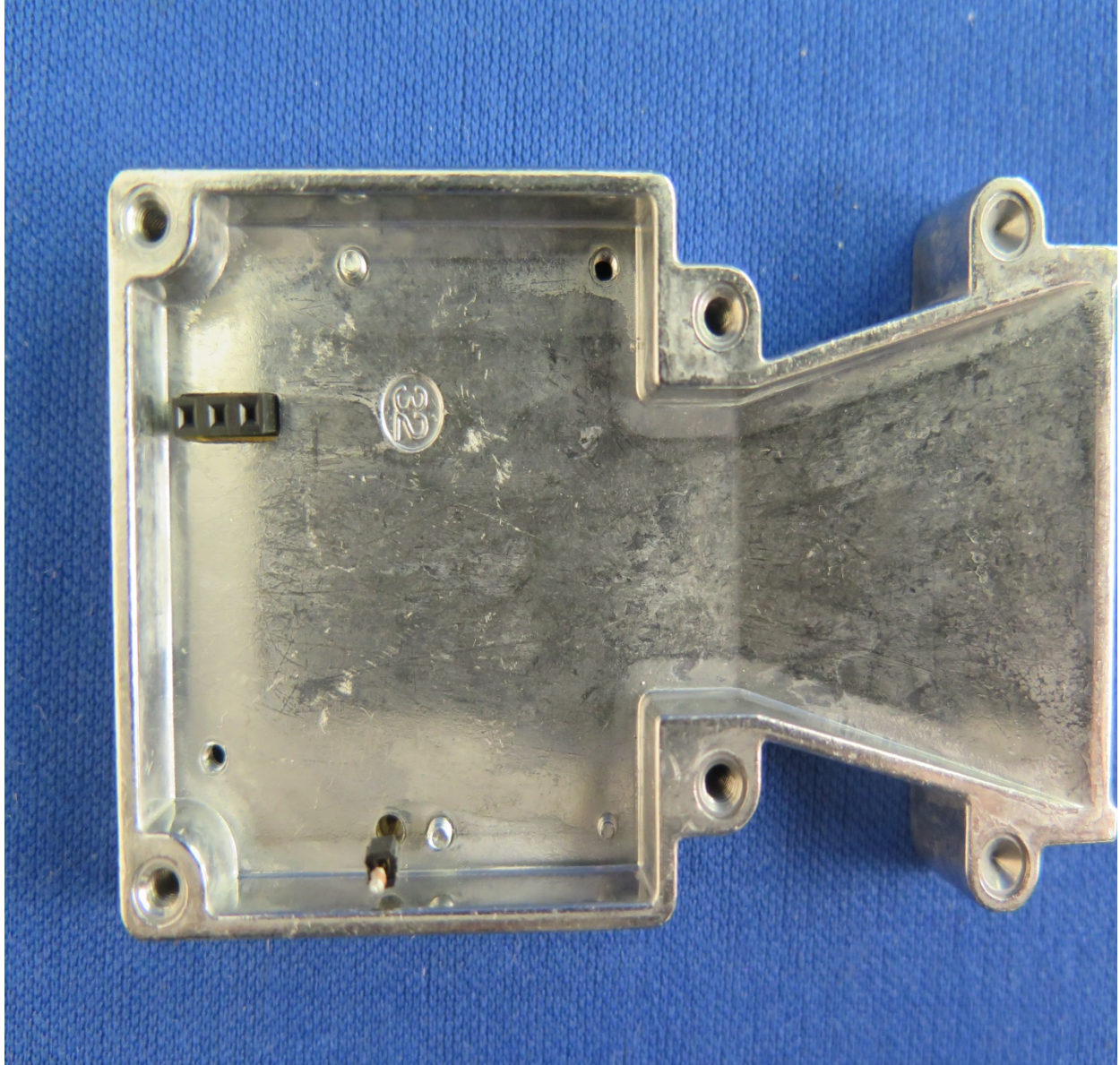


UNDERSIDE BOTTOM CASE





UNDERSIDE BOTTOM HORN



UNDERSIDE TOP CASE

