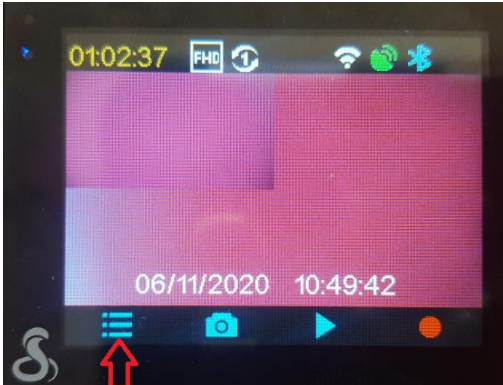


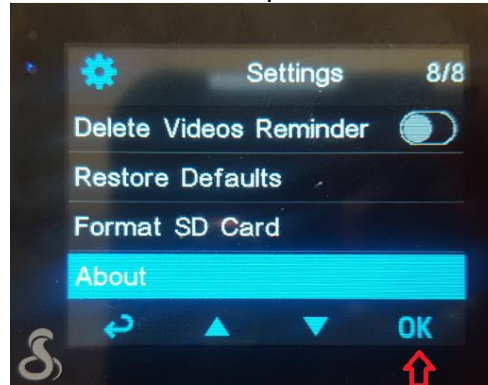
SC201 E-label

The SC201 has an E-label with the FCC ID shown in the product user interface. The unit model number, software version, serial number, & e-label regulatory information can be seen by:

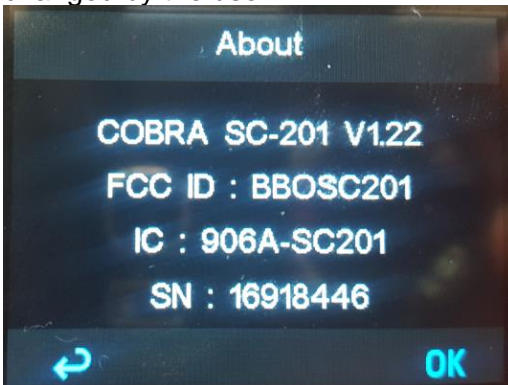
Step 1:
Press the Menu Button



Step 2:
Scroll to About and press OK



Step 3: Regulatory and device information can be seen on the display screen. The FCC ID cannot be changed by the user



The FCC ID and IC number are also printed on exterior the product packaging

FCC ID:BBOSC201, IC :906A-SC201, THIS DEVICE COMPLIES WITH PART 15 OF THE FCC RULES. OPERATION IS SUBJECT TO THE FOLLOWING TWO CONDITIONS: (1) THIS DEVICE MAY NOT CAUSE HARMFUL INTERFERENCE, AND (2) THIS DEVICE MUST ACCEPT ANY INTERFERENCE RECEIVED INCLUDING INTERFERENCE THAT MAY CAUSE UNDESIRE OPERATION

The Quickstart guide included with the product includes directions to download the full product manual from www.cobra.com. The manual includes the above instructions to the user to navigate to the regulatory information.

SC201 Serial Number Label 1:1
Black Mylar Label, Silver Type
23mm W x 15mm H

