

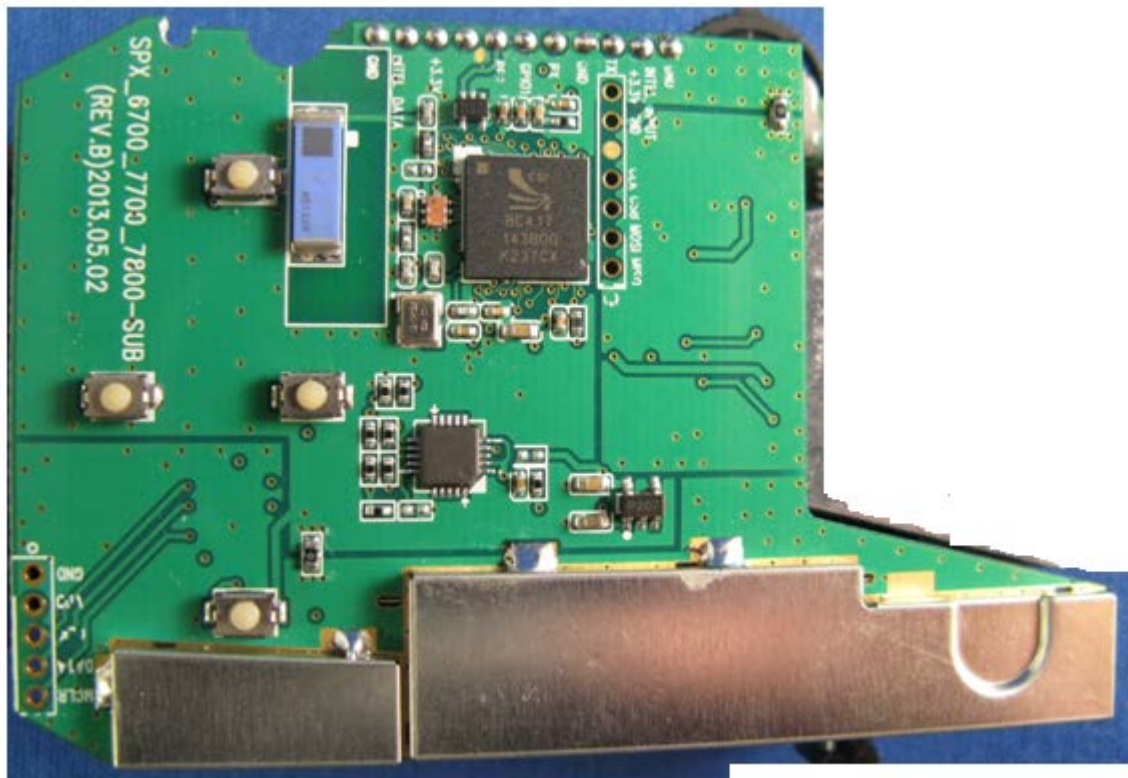
User manual (internal Cobra document)

Module description.

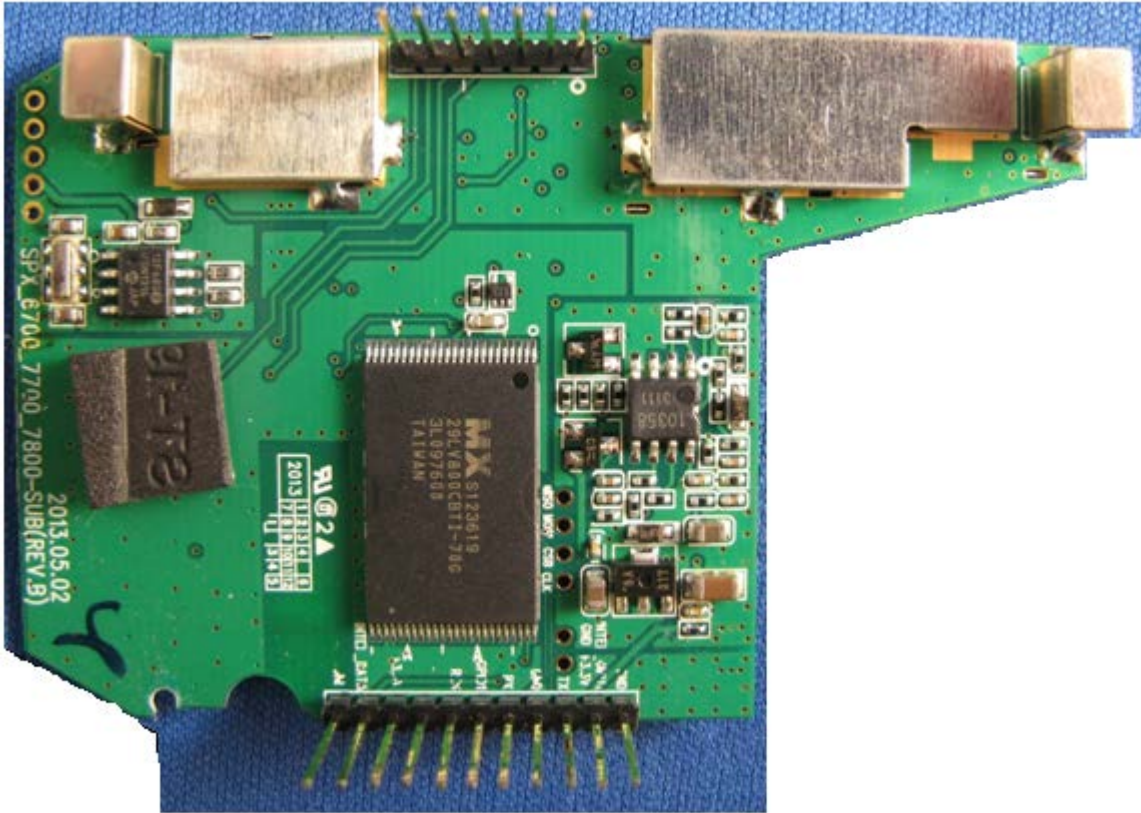
1. A PCB assembly that contains the BT IC, flash memory IC, antenna, voltage regulator, and connectors to interconnect to a motherboard.

Use limitations

2. The assembly is designed for inclusion in Cobra radar detector products to supply the BT and laser detection functions.
3. The Bluetooth module assembly can only be used in Cobra devices designed for this particular form factor. Other form factors are not allowed without FCC and IC reauthorization.
4. Although this device is a very low output power device. The RF exposure limits we self impose are for use in mobile or fixed location products => 20 cm.
5. The BT protocols and data interface is per the manufacturer's data sheet for the BT integrated circuit.
6. The radiated or conducted output power cannot be changed without re authorization.



Module photo 1



Module photo 2