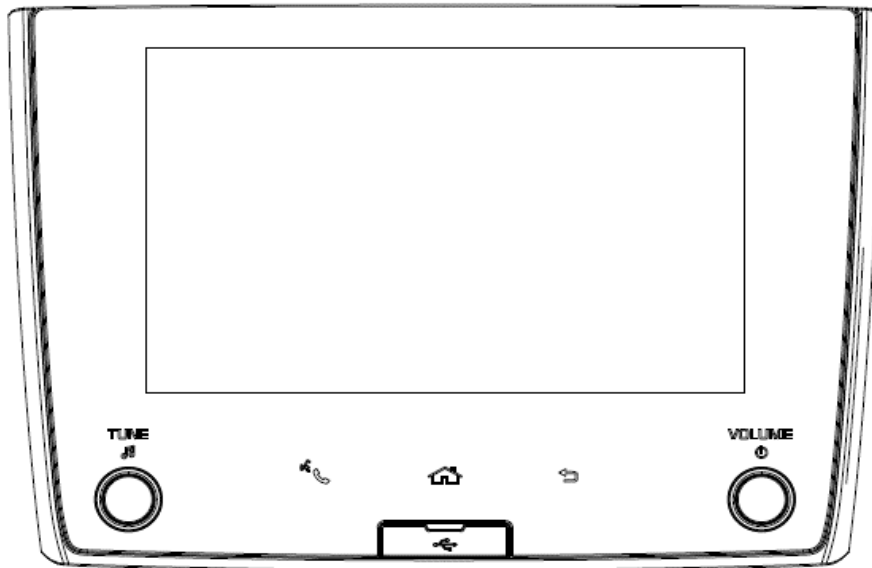


# TN0040B

## Operation Manual



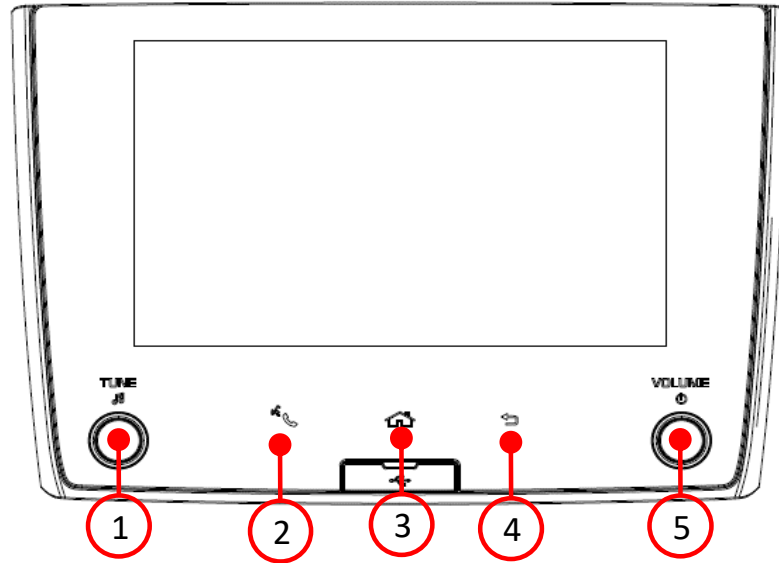
Model name	Car Audio
Model No	TN0040B

Index	Page
1-Specification of the EUT	2P
2-Button Function Spec	3P
3-Radio operation procedure	4P
4-Operating manual (Bluetooth/Handsfree)	5P
5-FCC Operating manual Requirement	6P

# 1-Specification of the EUT

Equipment name	Car Audio
Model name	TN0040B
Brand	ISUZU
FCC ID	BABTN0040B
IC Number	-
Purpose of the equipment	Vehicle instllation
Function	<b>Broadcast radio receiver</b> : AM/FM/RDS/DAB <b>Bluetooth</b> : Hands Free and Audio <b>WiFi</b> : For Wireless Carplay/AndroidAuto <b>GNSS</b> : GPS, Galileo, GLONASS, QZSS
RATED VOLTAGE	12.0V (10.5~16.0V) – ground
LOAD IMPEDANCE	4 Ω
BACK UP CURRENT	1mA or less
RATED CURRENT	1.98A or less (Vcc=13.2V, 0.5W output)
AM TUNING RANGE	522 – 1710 kHz (9kHz step)
FM TUNING RANGE	87.5 – 108 MHz (100kHz step)
DAB TUNING RANGE	174.928 – 239.200 MHz
Rating of usage environment	- 30 to +65 ° C (Perfomance assured temperature range)
Size of Equipmet	D 178.15mm × W 253.89mm × H 174.09mm
Weghit of Equipmet	2012g
Software version	-
Hardware version	-

## 2-Button Function Spec



### ■AUDIO controls

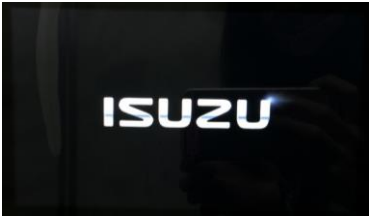
Button No.	Button Name	Operation
①	TUNE/MODE	Push knob: Transition to Mode selection screen Rotate knob: Jump between preset channels
②	TALK	Short Push: Transition to Dial screen Long Push: Transition to Bluetooth pairing screen
③	HOME	Transition to home screen
④	BACK	Transition to previous screen
⑤	VOLUME/POWER	Push knob: Audio ON/OFF Rotate knob to the right: Adjust volume by +1 Rotate knob to the left: Adjust volume by -1

# 3-Radio operation procedure

## 【操作手順】[Operation procedure]

### ① 起動 (ACC-ON)

ACC-ON後、ISUZU画面が表示された事を確認。  
After the ACC-ON, confirm that Isuzu screen is displayed.



### ② 数秒後に“CAUTION”画面に遷移します。

The screen is changed to “CAUTION” screen after a few seconds.

**\*初回のACC-ON時はやや時間を要します。**

**Note: It takes a little longer for the first time of ACC-ON.**



### ③ 数秒後に“Continue”ボタンを押して、MENU画面に遷移させます。

Press the “Continue” button on the face panel after a few seconds to move MENU screen.



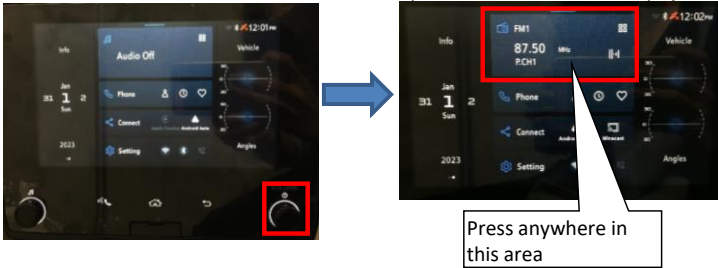
Menu Screen Display

### ④ POWERボタンを押す。

画面内のラジオモードウィンドウを押すと、“FM1”画面に遷移します。

Press the POWER button.

When the Radio Mode Window on the screen is pressed, “FM1” screen is displayed.



Press anywhere in this area

### ⑤ 下記画面に遷移したら、“<”釦 若しくは、“>”釦を押下してください。

これで、SEEKが始まります。

Confirm that the screen is changed as below,

Please push down the “<” button or “>” button.

This will start to SEEK.



Push this button

※AM/DABモードも同様の手順です。

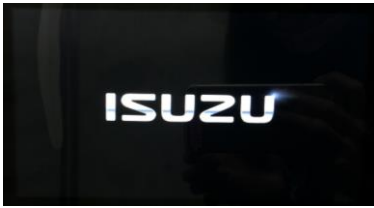
※Same as AM/DAB mode.

# 4-Operating manual (Bluetooth/Handsfree)

## 【操作手順】[Operation procedure]

### ① 起動 (ACC-ON)

ACC-ON後、ISUZU画が表示された事を確認。  
After the ACC-ON, confirm that Isuzu screen is displayed.



### ② 数秒後に“CAUTION”画面に遷移します。

The screen is changed to “CAUTION” screen after a few seconds.

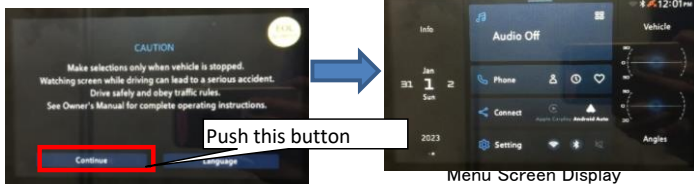
**\*初回のACC-ON時はやや時間を要します。**

Note: It takes a little longer for the first time of ACC-ON.



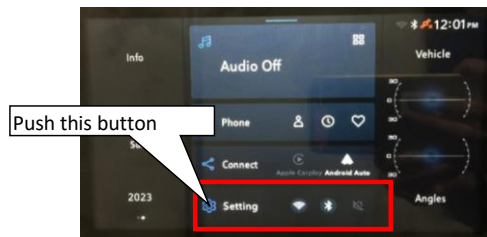
### ③ 数秒後に“Continue”ボタンを押して、MENU画面に遷移させます。

Press the “Continue” button on the face panel after a few seconds to move MENU screen.



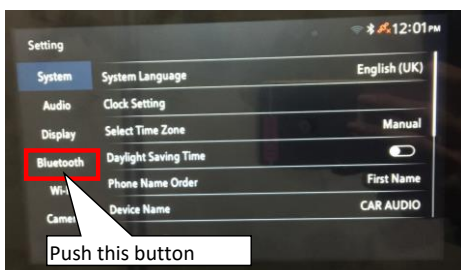
### ④ “Setting”ボタンを押して、SETTINGS画面に遷移させます。

Please press the “Setting” button on the face panel to move to Settings screen



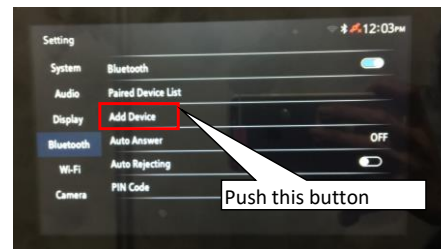
### ⑤ “Settings”画面に遷移することを確認し、画面上の“Bluetooth”鈕を選択。

Confirm if “Settings” screen is displayed, select the “Bluetooth” button on the display.



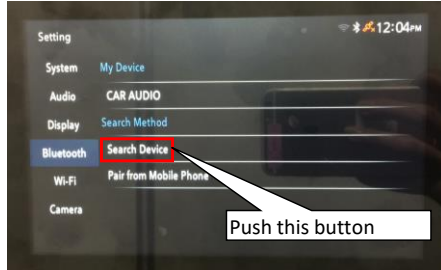
### ⑥ 画面の“Add Device”鈕を押下してください。

Please press the “Add Device” button of the screen



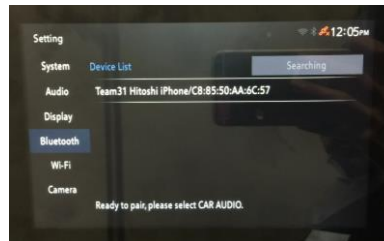
### ⑦ 画面の“Search Device”鈕を押下してください。

Please press the “Search Device” button of the screen



### ⑧ 下記画面に遷移したらBluetooth端末 (iPhone、iPodなど)をペアリングモードに設定してください。

Confirm if screen is changed as below, Please set iPhone or iPod in pairing mode.



※Displays when you have more than one pairing equipment  
※複数のペアリング機器がある場合の表示

### ⑨ 接続したiPhone又はiPodを選択します。

Select the iPhone or iPod to connect.



※ 電話機の表示にしたがって操作してください

※ Operate the phone after the message on the screen

### ⑩ 完了すれば“Connection Completed”の画面になります。

“Connection Completed” is displayed if completed.



## 5-FCC Operating manual Requirement

### CAUTION: Radio Frequency Radiation Exposure

This equipment complies with FCC radiation exposure limits set forth for uncontrolled equipment and meets the FCC radio frequency (RF) Exposure Guidelines. This equipment should be installed and operated keeping the radiator at least 20cm or more away from person's body.

Co-location: This transmitter must not be co-located or operated in conjunction with any other antenna or transmitter.

This device complies with part 15 of the FCC Rules. Operation is subject to the following two conditions: (1) This device may not cause harmful interference, and (2) this device must accept any interference received, including interference that may cause undesired operation.

### FCC WARNING

Changes or modifications not expressly approved by the party responsible for compliance could void the user's authority to operate the equipment.