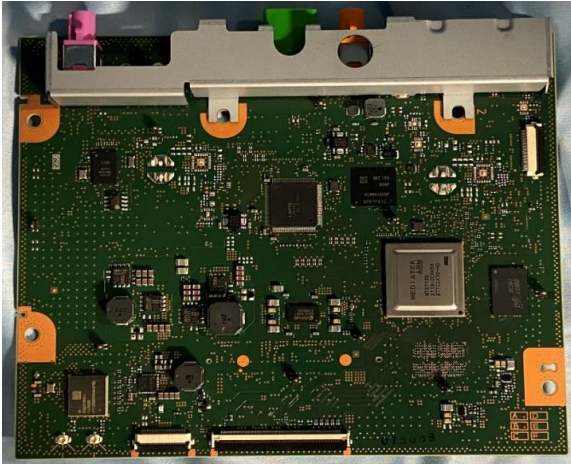


**【TN0040B】 Internal Photos (All Boards)**

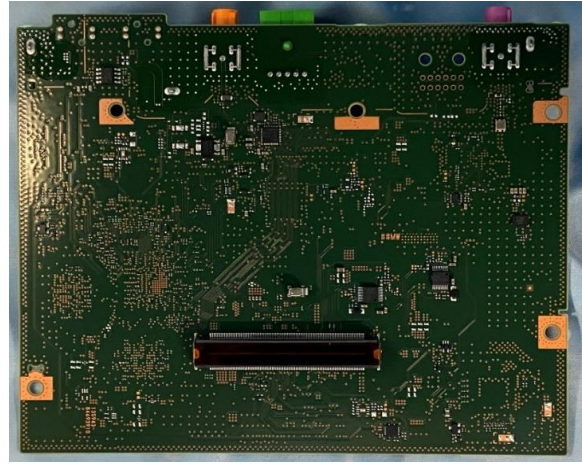
DENSO TEN CONFIDENTIAL

■ All Boards  
CPU,Audio,Disp,SW

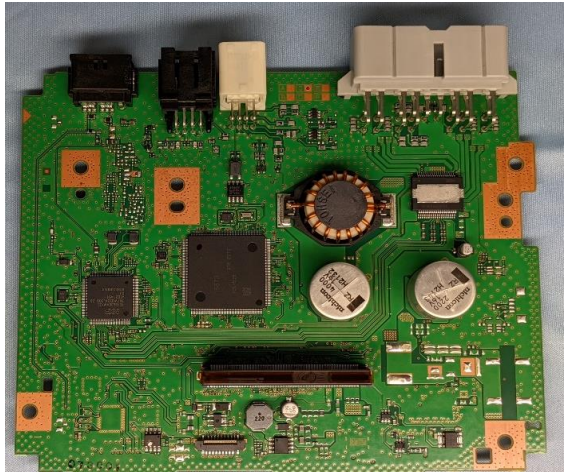
■ CPU Board  
Parts side



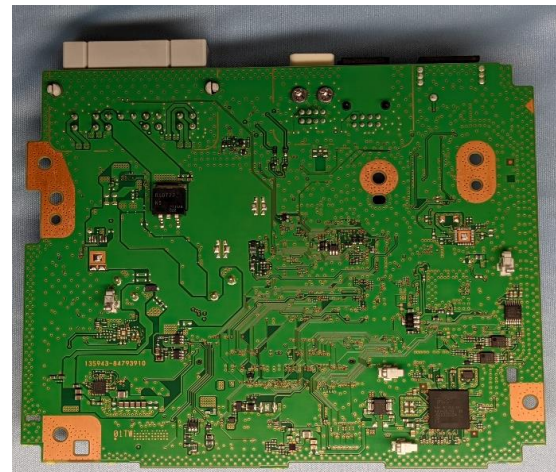
Solder Side



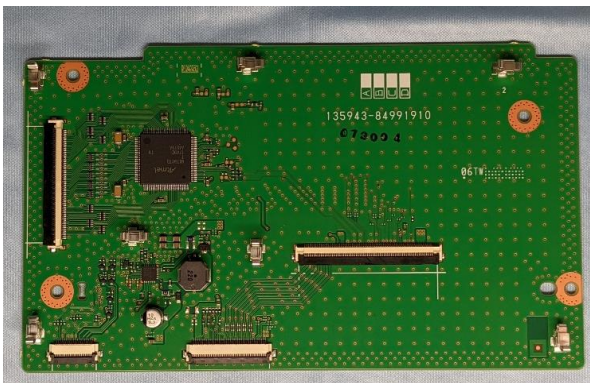
■ Audio Board  
Parts side



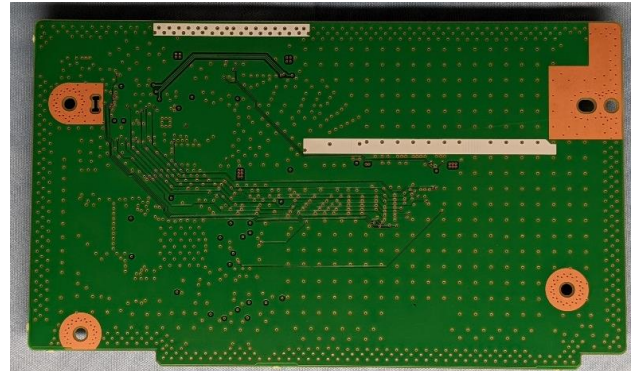
Solder Side



■ Disp Board  
Parts side

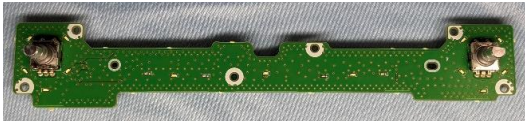


Solder Side

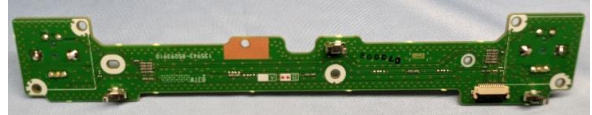




■ SW Board  
Parts side



Solder Side



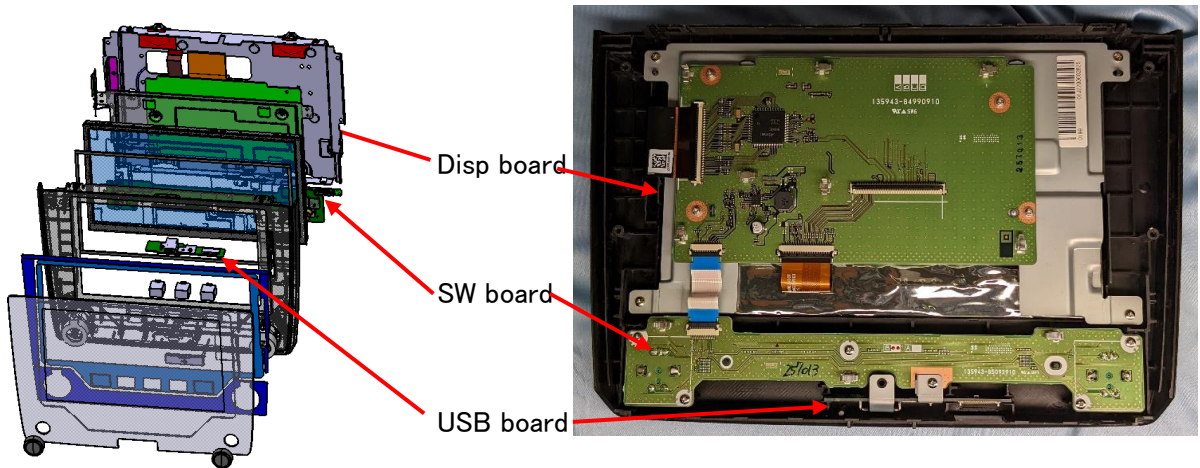
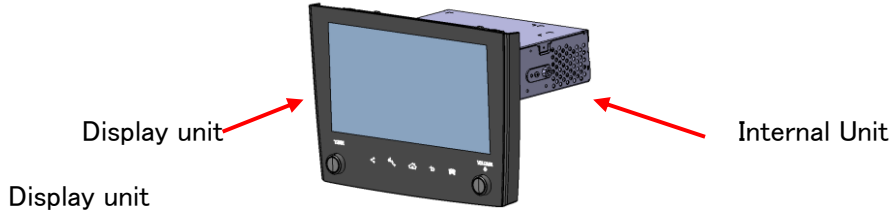
■ USB Board  
Parts side



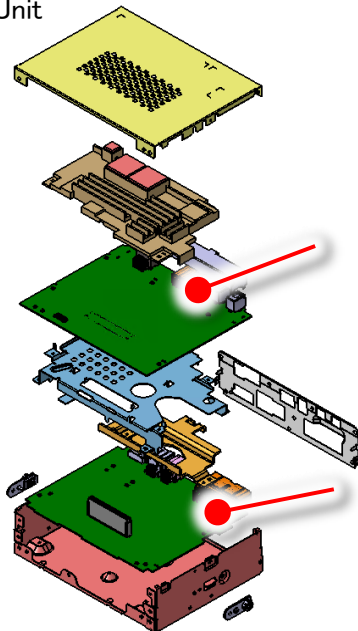
Solder Side



■ Substrate location



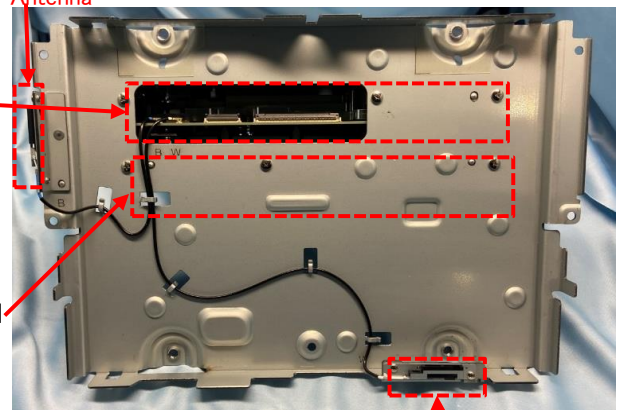
Internal Unit



CPU Board

Audio Board

BT Antenna



WiFi Antenna